

## System Check\_835MHz

### D835V2-SN:4d162

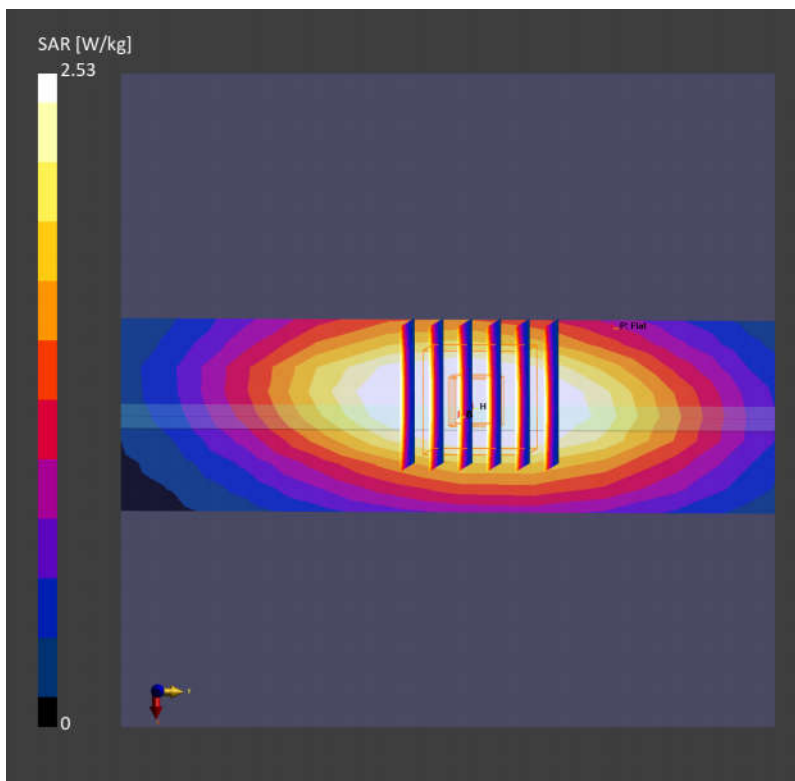
Communication System: CW; Frequency: 835.0 MHz; Duty Cycle: 1:1  
Medium: HSL Medium parameters used:  $f = 835.0$  MHz;  $\sigma = 0.915$  S/m;  $\epsilon_r = 43.4$   
Ambient Temperature: 23.5°C; Liquid Temperature: 22.5°C

#### DASY6 Configuration:

- Probe: EX3DV4 - SN3819; ConvF(9.49, 9.49, 9.49); Calibrated: 2023/6/6
- Sensor-Surface: 1.4 mm
- Electronics: DAE4 Sn1437; Calibrated: 2024/3/14
- Phantom: Twin-SAM V5.0 (30deg probe tilt); Serial: 1670; Section: Flat
- Measurement Software: 16.2.2.1588
- UID: CW, 0--

**Pin=dBm/Area Scan (40.0 mm x 210.0 mm):** Measurement Grid: 5.0 mm x 15.0 mm  
SAR (1g) = 2.54 W/kg; SAR (10g) = 1.68 W/kg;

**Pin=dBm/Zoom Scan (30.0 mm x 30.0 mm x 30.0 mm):** Measurement Grid: 6.0 mm x 6.0 mm x 1.5 mm  
Power Drift = 0.00 dB  
SAR (1g) = 2.53 W/kg; SAR (10g) = 1.61 W/kg  
Smallest distance from peaks to all points 3 dB below = 15.7 mm  
Ratio of SAR at M2 to SAR at M1 = 88.4 %



## System Check\_1750MHz

### D1750V2-SN:1137

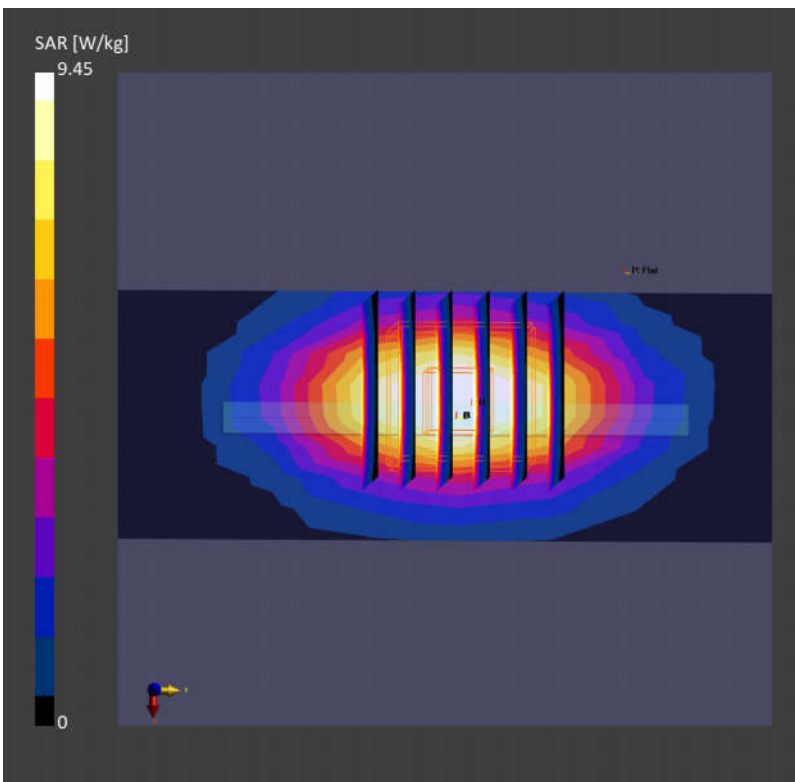
Communication System: CW; Frequency: 1750.0 MHz; Duty Cycle: 1:1  
Medium: HSL Medium parameters used:  $f=1750.0$  MHz;  $\sigma=1.33$  S/m;  $\epsilon_r=41.7$   
Ambient Temperature: 23.5°C; Liquid Temperature: 22.4°C

#### DASY6 Configuration:

- Probe: EX3DV4 - SN3819; ConvF(8.58, 8.58, 8.58); Calibrated: 2023/6/6
- Sensor-Surface: 1.4 mm
- Electronics: DAE4 Sn1437; Calibrated: 2024/3/14
- Phantom: Twin-SAM V5.0 (30deg probe tilt); Serial: 1670; Section: Flat
- Measurement Software: 16.2.2.1588
- UID: CW, 0--

**Pin=dBm/Area Scan (40.0 mm x 120.0 mm):** Measurement Grid: 5.0 mm x 15.0 mm  
SAR (1g) = 8.80 W/kg; SAR (10g) = 4.78 W/kg;

**Pin=dBm/Zoom Scan (30.0 mm x 30.0 mm x 30.0 mm):** Measurement Grid: 6.0 mm x 6.0 mm x 1.5 mm  
Power Drift = 0.00 dB  
SAR (1g) = 9.45 W/kg; SAR (10g) = 4.97 W/kg  
Smallest distance from peaks to all points 3 dB below = 10.8 mm  
Ratio of SAR at M2 to SAR at M1 = 83.3 %



## System Check\_2600MHz

### D2600V2-SN:1070

Communication System: CW; Frequency: 2600.0 MHz; Duty Cycle: 1:1  
Medium: HSL Medium parameters used:  $f=2600.0$  MHz;  $\sigma=1.92$  S/m;  $\epsilon_r=40.6$   
Ambient Temperature: 23.5°C; Liquid Temperature: 22.5°C

#### DASY6 Configuration:

- Probe: EX3DV4 - SN3819; ConvF(7.55, 7.55, 7.55); Calibrated: 2023/6/6
- Sensor-Surface: 1.4 mm
- Electronics: DAE4 Sn1437; Calibrated: 2024/3/14
- Phantom: Twin-SAM V5.0 (30deg probe tilt); Serial: 1670; Section: Flat
- Measurement Software: 16.2.2.1588
- UID: CW, 0--

**Pin=dBm/Area Scan (40.0 mm x 80.0 mm):** Measurement Grid: 5.0 mm x 10.0 mm  
SAR (1g) = 13.8 W/kg; SAR (10g) = 6.24 W/kg;

**Pin=dBm/Zoom Scan (30.0 mm x 30.0 mm x 30.0 mm):** Measurement Grid: 5.0 mm x 5.0 mm x 1.5 mm  
Power Drift = -0.00 dB  
SAR (1g) = 14.7 W/kg; SAR (10g) = 6.42 W/kg  
Smallest distance from peaks to all points 3 dB below = 9.0 mm  
Ratio of SAR at M2 to SAR at M1 = 77.4 %

