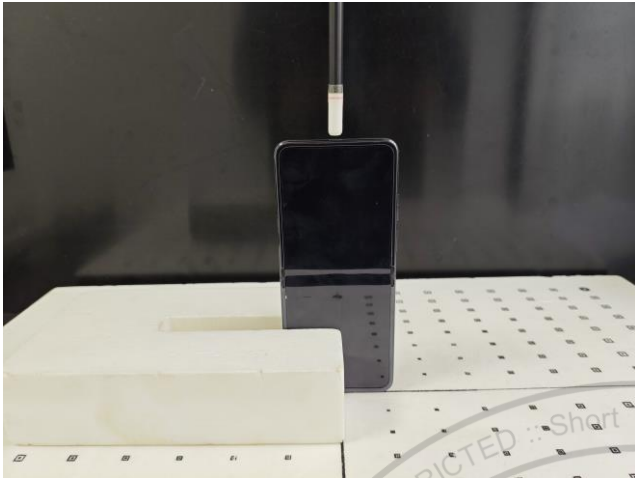
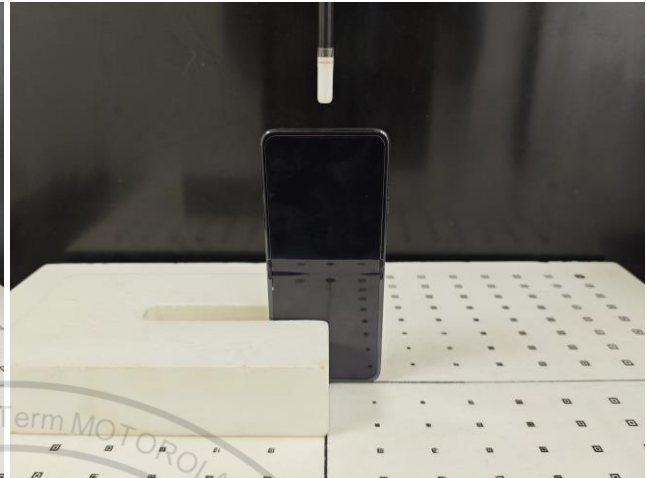


Appendix D. PD Test Setup Photos

<Flip Open >



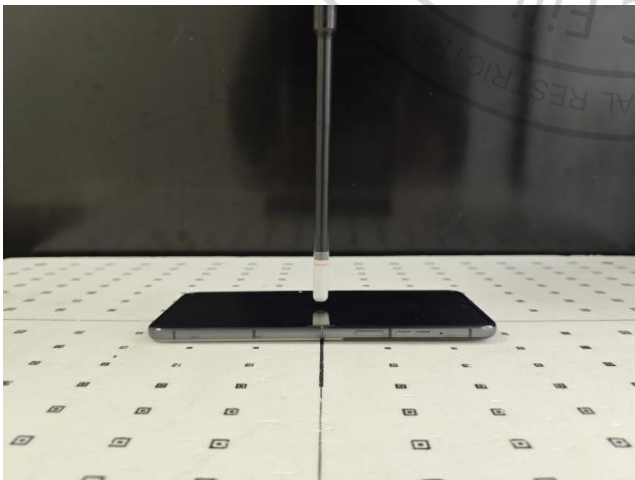
Top Side, Test Separation 2 mm



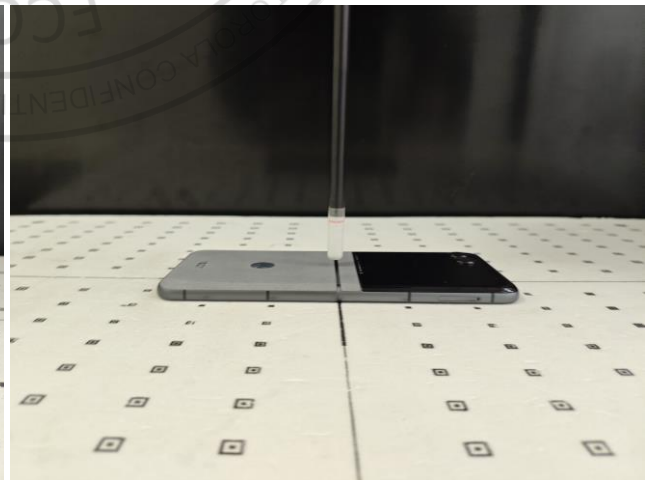
Top Side, Test Separation 10 mm



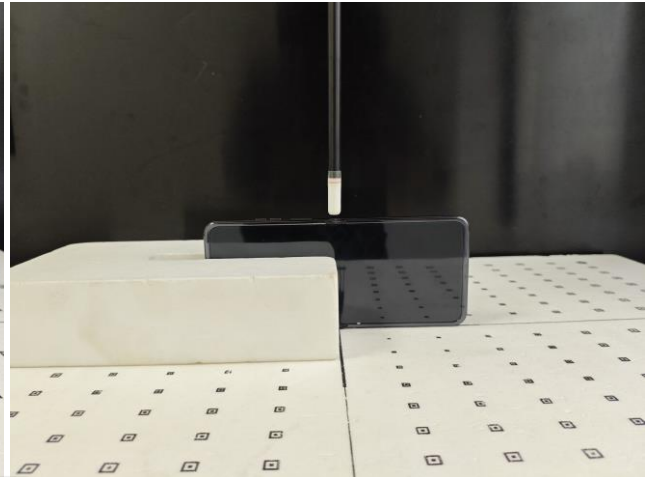
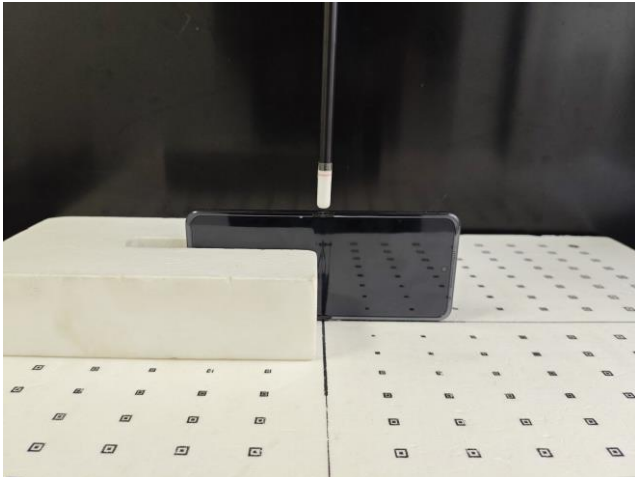
Top Side, Test Separation 8.59 mm



Front, Test Separation 2 mm

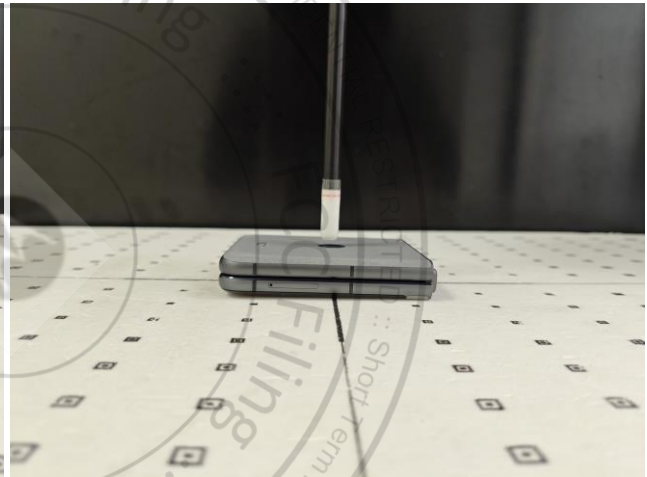
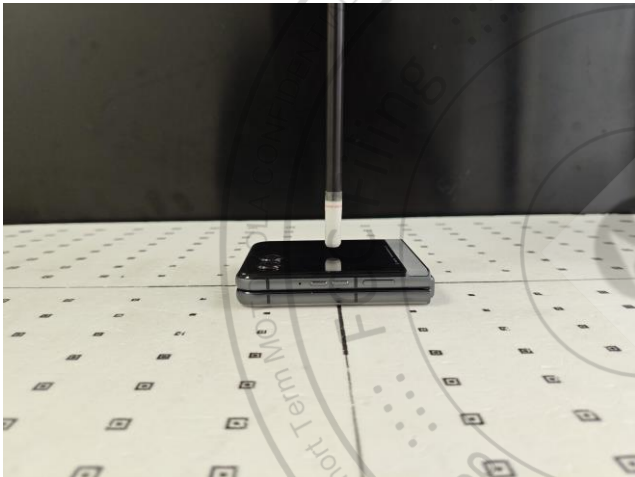


Back, Test Separation 2 mm



Left Side, Test Separation 2 mm Right Side, Test Separation 2 mm

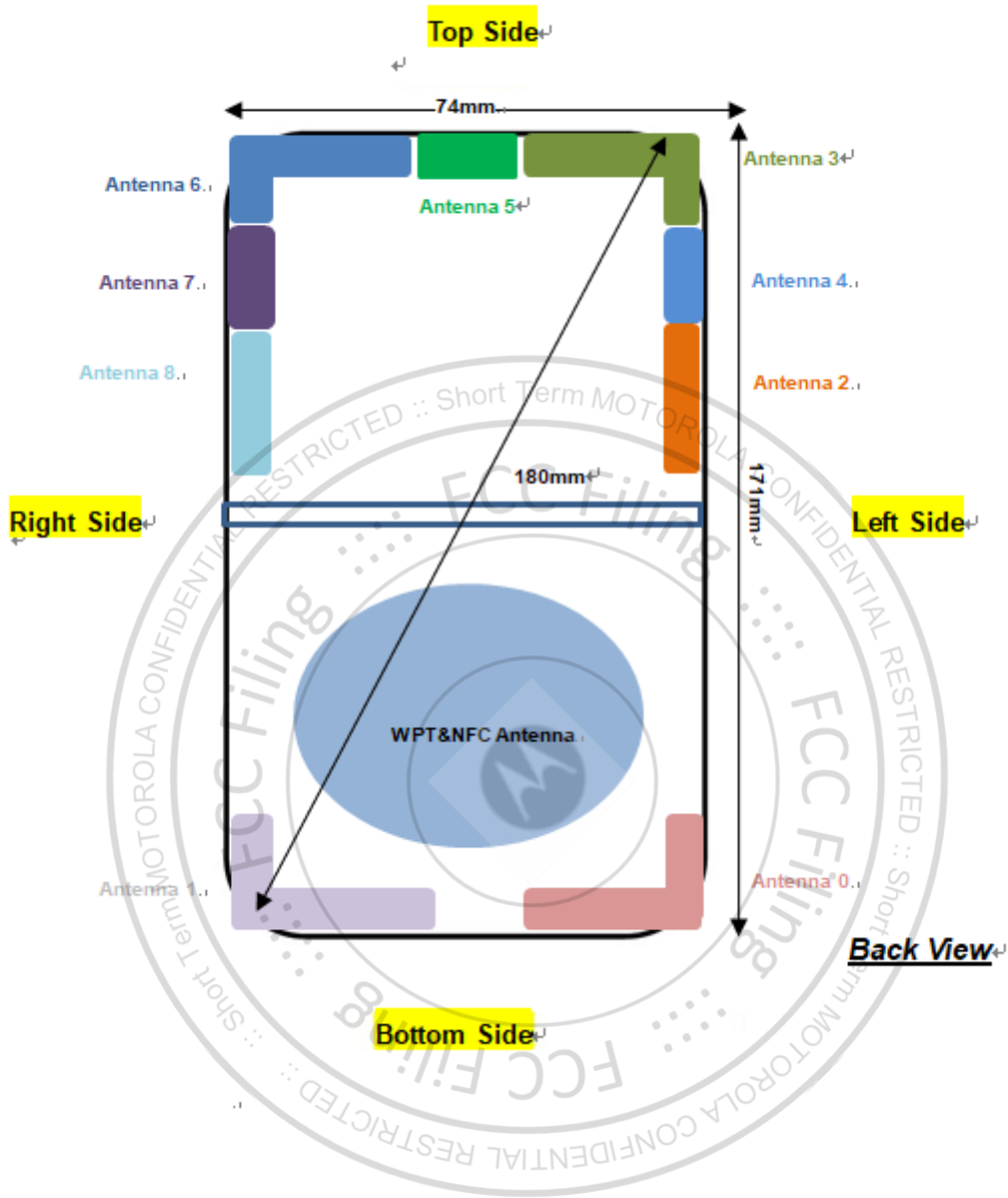
<Flip Close >



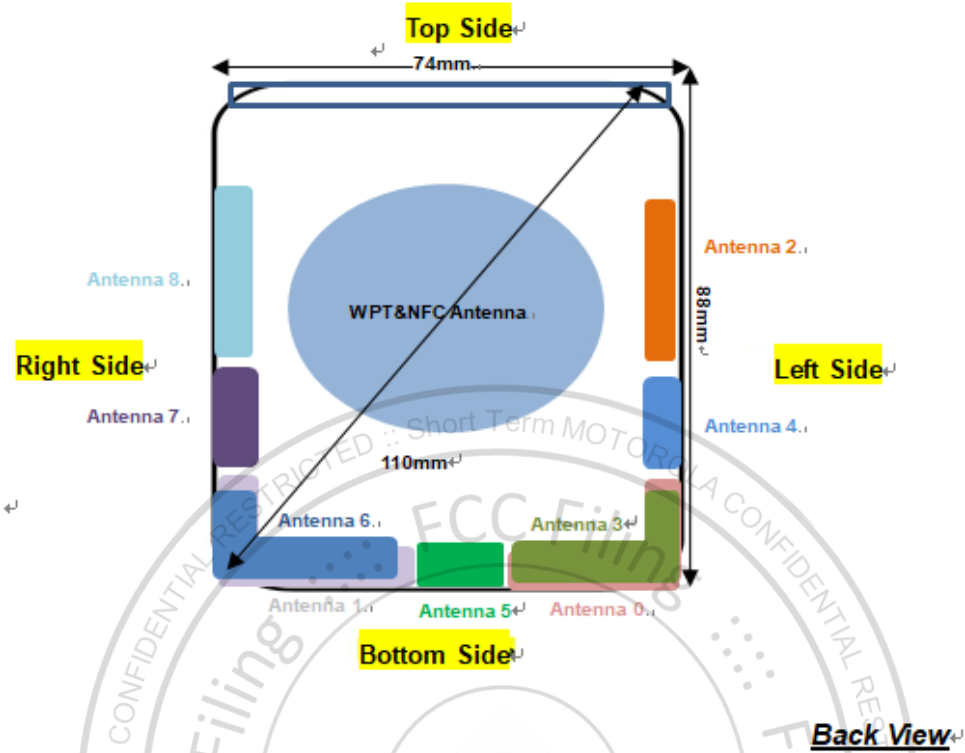
Front, Test Separation 2 mm Back, Test Separation 2 mm

Antenna Location

<Flip-Open Mode>



<Flip-Close Mode>



Note: This is a foldable Mobile Cellular Phone device. Above overlap area is a simulation prototype, Antenna 0 and Antenna 1 were located at the bottom and back side of the device. Antenna 3 and Antenna 6 were located at the top and front side of the device. When the device was at flip close state (screen was folded), Antenna 3 was coincident with Antenna 0, and Antenna 1 was coincident with Antenna 6.

Antenna	Support Band
Antenna 5	WLAN 6GHz chain1<TX/RX>
Antenna 7	WLAN 6GHz chain0<TX/RX>