

System Check_Head_750MHz

DUT: D750V3 - SN1107

Communication System: CW; Frequency: 750.000 MHz; Duty Cycle: 1:1

Medium: HSL_750_240710 Medium parameters used: $f=750.000$ MHz; $\sigma=0.888$ S/m; $\epsilon_r=41.9$

Ambient Temperature: 23.5°C; Liquid Temperature: 22.5°C

DASY6 Configuration:

- Probe:EX3DV4 - SN7791; ConvF(9.09, 9.62, 8.59); Calibrated: 2024-02-21

- Sensor-Surface: 1.4 mm

- Electronics:DAE4ip Sn1800; Calibrated: 2024-06-18

- Phantom: ELI V8.0 (20deg probe tilt); Serial: 2204; Section: Flat

- Measurement Software: 16.2.4.2524

- UID: CW

Pin=17.0dBm/Area Scan (40.0 mm x 90.0 mm): Measurement Grid: 10.0 mm x 15.0 mm

SAR (1g) = 0.394 W/kg; SAR (10g) = 0.264 W/kg;

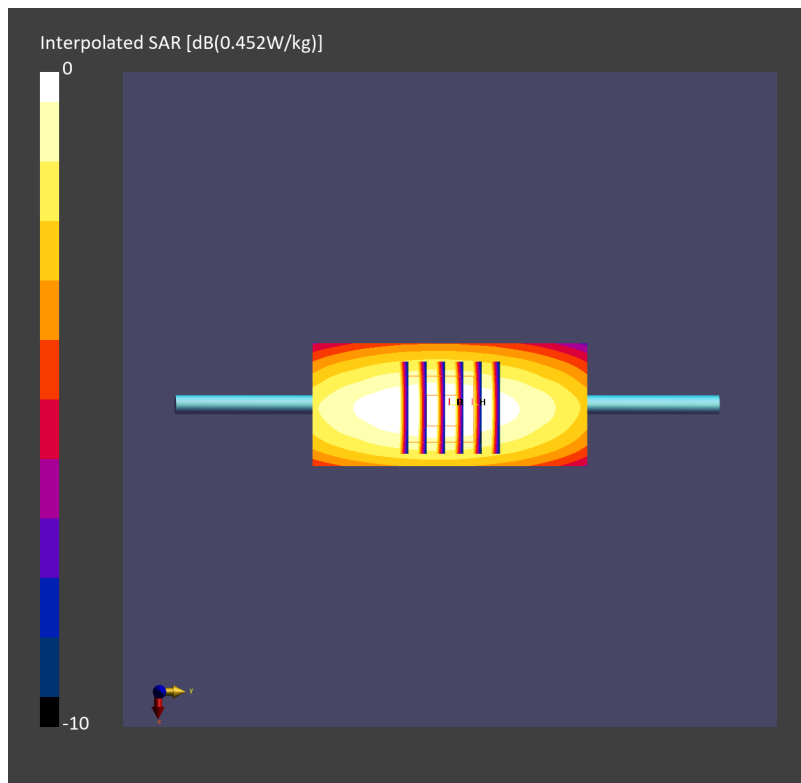
Pin=17.0dBm/Zoom Scan (30.0 mm x 30.0 mm x 30.0 mm): Measurement Grid: 6.0 mm x 6.0 mm x 1.5 mm

Power Drift = 0.05 dB

SAR (1g) = 0.392 W/kg; SAR (8g) = 0.277 W/kg; SAR (10g) = 0.263 W/kg

Smallest distance from peaks to all points 3 dB below = > 15.0 mm

Ratio of SAR at M2 to SAR at M1 = 89.9 %



System Check_Head_835MHz

DUT: D835V2 - SN4d167

Communication System: CW; Frequency: 835.000 MHz; Duty Cycle: 1:1

Medium: HSL_850_240710 Medium parameters used: $f=835.000$ MHz; $\sigma=0.922$ S/m; $\epsilon_r=41.6$

Ambient Temperature: 23.5°C; Liquid Temperature: 22.5°C

DASY6 Configuration:

- Probe: EX3DV4 - SN7791; ConvF(8.71, 9.44, 8.39); Calibrated: 2024-02-21

- Sensor-Surface: 1.4 mm

- Electronics: DAE4ip Sn1800; Calibrated: 2024-06-18

- Phantom: ELI V8.0 (20deg probe tilt); Serial: 2204; Section: Flat

- Measurement Software: 16.2.4.2524

- UID: CW, 0--

Pin=17.0dBm/Area Scan (40.0 mm x 90.0 mm): Measurement Grid: 10.0 mm x 15.0 mm

SAR (1g) = 0.423 W/kg; SAR (10g) = 0.282 W/kg;

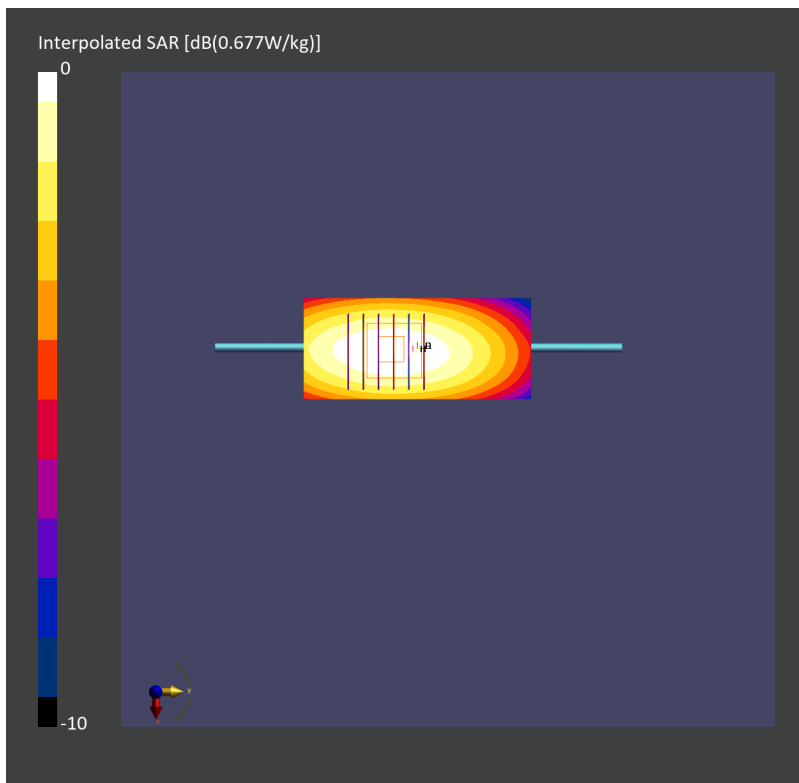
Pin=17.0dBm/Zoom Scan (30.0 mm x 30.0 mm x 30.0 mm): Measurement Grid: 6.0 mm x 6.0 mm x 1.5 mm

Power Drift = 0.12 dB

SAR (1g) = 0.445 W/kg; SAR (8g) = 0.306 W/kg; SAR (10g) = 0.290 W/kg

Smallest distance from peaks to all points 3 dB below = 17.9 mm

Ratio of SAR at M2 to SAR at M1 = 86.9 %



System Check_Head_1750MHz

DUT: D1750V2 - SN1112

Communication System: CW; Frequency: 1750.000 MHz; Duty Cycle: 1:1

Medium: HSL_1750_240710 Medium parameters used: $f=1750.000$ MHz; $\sigma=1.35$ S/m; $\epsilon_r=40.8$

Ambient Temperature: 23.9°C; Liquid Temperature: 22.9°C

DASY6 Configuration:

- Probe: EX3DV4 - SN7791; ConvF(7.62, 8.22, 7.18); Calibrated: 2024-02-21

- Sensor-Surface: 1.4 mm

- Electronics: DAE4ip Sn1800; Calibrated: 2024-06-18

- Phantom: ELI V8.0 (20deg probe tilt); Serial: 2204; Section: Flat

- Measurement Software: 16.2.4.2524

- UID: CW

Pin=17.0dBm/Area Scan (40.0 mm x 90.0 mm): Measurement Grid: 10.0 mm x 15.0 mm

SAR (1g) = 1.64 W/kg; SAR (10g) = 0.899 W/kg;

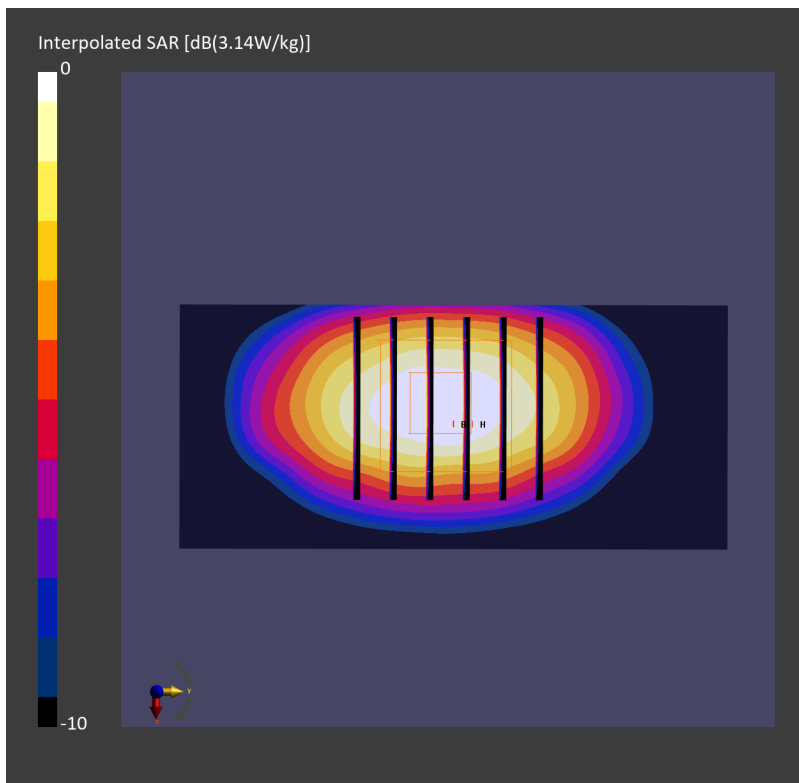
Pin=17.0dBm/Zoom Scan (30.0 mm x 30.0 mm x 30.0 mm): Measurement Grid: 6.0 mm x 6.0 mm x 1.5 mm

Power Drift = -0.00 dB

SAR (1g) = 1.69 W/kg; SAR (8g) = 0.983 W/kg; SAR (10g) = 0.907 W/kg

Smallest distance from peaks to all points 3 dB below = 10.8 mm

Ratio of SAR at M2 to SAR at M1 = 81.9 %



System Check_Head_1900MHz

DUT: D1900V2 - SN5d185

Communication System: CW; Frequency: 1900.000 MHz; Duty Cycle: 1:1

Medium: HSL_1900_240710 Medium parameters used: $f=1900.000$ MHz; $\sigma=1.39$ S/m; $\epsilon_r=40.3$

Ambient Temperature: 23.3°C; Liquid Temperature: 22.3°C

DASY6 Configuration:

- Probe: EX3DV4-SN7791; ConvF(7.61, 8.23, 7.25); Calibrated: 2024-02-21

- Sensor-Surface: 1.4 mm

- Electronics: DAE4ip Sn1800; Calibrated: 2024-06-18

- Phantom: ELI V8.0 (20deg probe tilt); Serial: 2204; Section: Flat

- Measurement Software: 16.2.4.2524

- UID: CW

Pin=17.0dBm/Area Scan (40.0 mm x 90.0 mm): Measurement Grid: 10.0 mm x 15.0 mm

SAR (1g) = 1.75 W/kg; SAR (10g) = 0.911 W/kg;

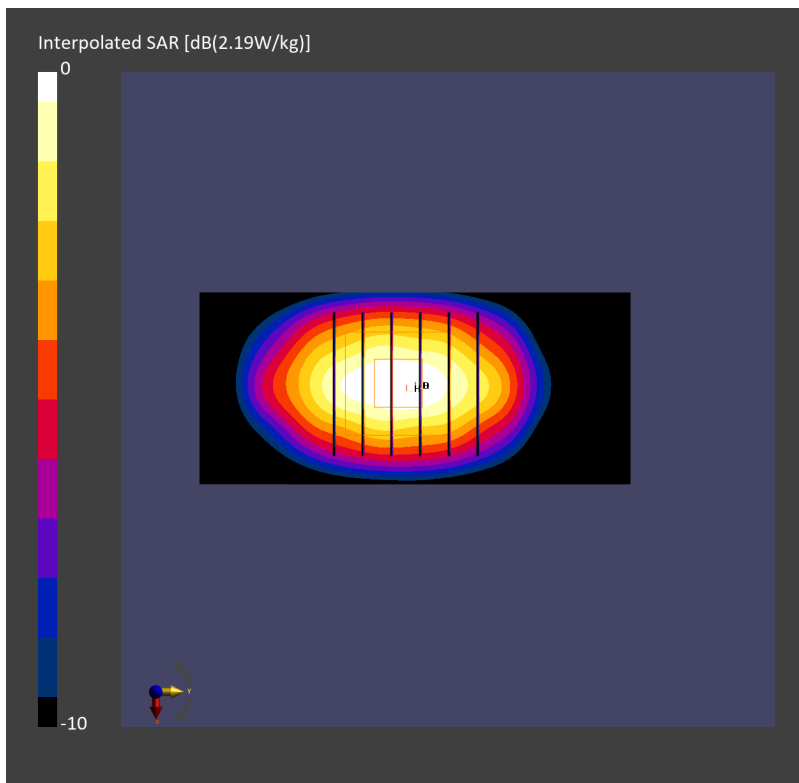
Pin=17.0dBm/Zoom Scan (30.0 mm x 30.0 mm x 30.0 mm): Measurement Grid: 6.0 mm x 6.0 mm x 1.5 mm

Power Drift = 0.04 dB

SAR (1g) = 1.77 W/kg; SAR (8g) = 1.01 W/kg; SAR (10g) = 0.933 W/kg

Smallest distance from peaks to all points 3 dB below = 9.6 mm

Ratio of SAR at M2 to SAR at M1 = 82.8 %



System Check_Head_3900MHz

DUT: D3900V2 - SN1017

Communication System: CW; Frequency: 3900.000 MHz; Duty Cycle: 1:1

Medium: HSL_3900_240710 Medium parameters used: $f=3900.000$ MHz; $\sigma=3.32$ S/m; $\epsilon_r=36.9$

Ambient Temperature: 23.5°C; Liquid Temperature: 22.5°C

DASY6 Configuration:

- Probe: EX3DV4 - SN7625; ConvF(6.47, 6.47, 6.47); Calibrated: 2023-12-14

- Sensor-Surface: 1.4 mm

- Electronics: DAE4 Sn1694; Calibrated: 2023-11-17

- Phantom: ELI V8.0 (20deg probe tilt); Serial: 2192; Section: Flat

- Measurement Software: 16.2.4.2524

- UID: CW

Pin=17.0dBm/Area Scan (40.0 mm x 80.0 mm): Measurement Grid: 10.0 mm x 10.0 mm

SAR (1g) = 2.94 W/kg; SAR (10g) = 1.08 W/kg;

Pin=17.0dBm/Zoom Scan (28.0 mm x 28.0 mm x 28.0 mm): Measurement Grid: 5.0 mm x 5.0 mm x 1.4 mm

Power Drift = -0.09 dB

SAR (1g) = 3.22 W/kg; SAR (8g) = 1.31 W/kg; SAR (10g) = 1.15 W/kg

Smallest distance from peaks to all points 3 dB below = 8.0 mm

Ratio of SAR at M2 to SAR at M1 = 74.0 %

