

DASY8 Module WPT Measurement Report

Device under test

Info:
1_Back_0mm

Tool info

DASY software version:
DASY8 Module WPT 2.6.0.5002

Probe model, serial no. and configuration date:
MAGPy-8H3D+E3Dv2, WP000211, 2024/05/16

Software version:
2.0.63, backend: 2.2.22

Scan info

Center location:
x: 118.00 mm, y: -223.32 mm, z: 34.31 mm

Dimensions:
x: 169.0 mm, y: 256.3 mm, z: 36.7 mm

Resolution:
x: 7.33 mm, y: 7.33 mm, z: 7.33 mm

Completed on:
2024/06/27

Measurement results

Maximum H-field [RMS]:

MAGNITUDE: 10.74 A/m
x: 112.05 mA/m, y: 916.68 mA/m, z: 10.70 A/m

Maximum H-field location relative to DUT:

x: 3.67 mm, y: 3.67 mm, z: 8.50 mm

Maximum E-field [RMS]:

MAGNITUDE: 38.57 V/m
x: 850.67 mV/m, y: 483.29 mV/m, z: 38.55 V/m

Maximum E-field location relative to DUT:

x: 0.00 m, y: 0.00 m, z: 0.00 m

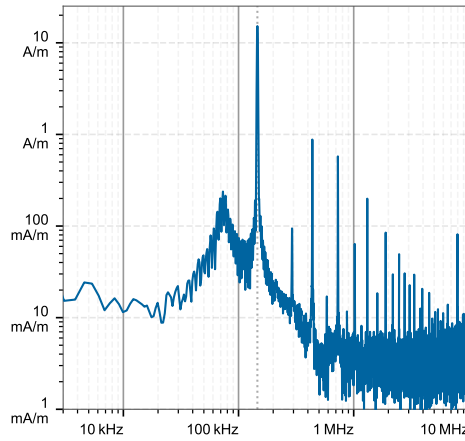
Distance to -20.0 dB boundary:

53.39 mm

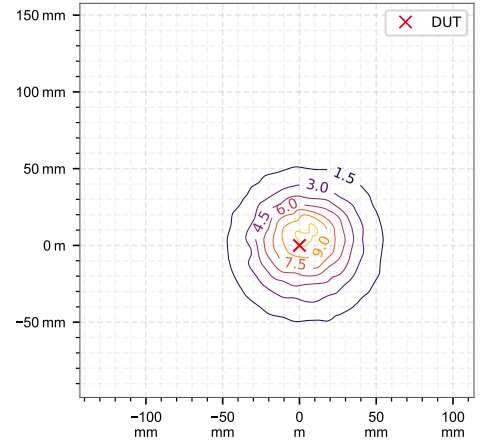
Offset relative to DUT:

x: 0.00 m, y: 0.00 m, z: 1.00 mm

H-field magnitude [RMS] at maximum location



H-field magnitude [RMS] at lowest plane



Incident fields and induced fields in the homogeneous phantom at the peak frequency

Distance [mm]	Peak incident fields [RMS]				Peak E _{ind} [V/m, RMS]			Peak J _{ind} [A/m ² , RMS]	psSAR [mW/kg]		H-field extent
	H _{inc} [A/m]	E _{inc} [V/m]	Cube avg.	Local	Line avg.	Surface avg.	1g avg.	10g avg.	-20 dB radius [mm]		
0.00	20.2	38.6	0.149	0.152	0.152	0.0992	0.0101	5.6e-3	50.8		

Compliance evaluation (Field values at the peak frequency)

Distance [mm]	ICNIRP 2010/2020				ICNIRP 1998				IEEE 2019				FCC				HC Code 6			
	RL [RMS]		BR [RMS]		RL [RMS]		BR [RMS]		ERL [RMS]		DRL [RMS]		MPE [RMS]		BR [RMS]		RL [RMS]		BR [RMS]	
PH _{inc} [A/m]	PE _{inc} [V/m]	PE _{ind} [V/m]	psSAR [mW/kg]	PH _{inc} [A/m]	PE _{inc} [V/m]	PJ _{ind} [A/m ²]	psSAR [mW/kg]	PH _{inc} [A/m]	PE _{inc} [V/m]	PE _{ind} [V/m]	psSAR [mW/kg]	PH _{inc} [A/m]	PE _{inc} [V/m]	PE _{ind} [V/m]	psSAR [mW/kg]	PH _{inc} [A/m]	PE _{inc} [V/m]	PE _{ind} [V/m]	psSAR [mW/kg]	
0.00	20.2	38.6	0.83	5.60e-3	20.2	38.6	0.100	5.60e-3	20.2	38.6	0.462	5.60e-3	20.2	38.6	N/A	0.0101	20.2	38.6	1.19	0.0101

Coverage factors: $w_{E_{ind, cube avg.}} = [5.56]$, $w_{E_{ind, local}} = [7.86]$, $w_{E_{ind, line avg.}} = [3.03]$

Compliance evaluation (Exposure ratios) (with multi-frequency enhancement, total field evaluation, coverage evaluation)

Distance [mm]	ICNIRP 2010/2020				ICNIRP 1998				IEEE 2019				FCC				HC Code 6									
	RL		BR		RL		BR		ERL		DRL		MPE		BR		RL		BR							
PH _{inc}	PE _{inc}	PE _{ind}	psSAR	PH _{inc}	PE _{inc}	PJ _{ind}	psSAR	PH _{inc}	PE _{inc}	PE _{ind}	psSAR	PH _{inc}	PE _{inc}	PE _{ind}	psSAR	PH _{inc}	PE _{inc}	PE _{ind}	psSAR							
NS	TH	NS	TH	NS	TH	N/A	N/A	NS	TH	NS	TH	NS	TH	NS	TH	NS	TH	NS	TH							
0.00	0.96	0.60	2.43	0.19	0.04	<0.01	4.04	2.85	0.36	<0.01	0.12	0.08	0.33	0.07	0.02	<0.01	12.4	0.52	N/A	<0.01	0.22	4.04	2.43	0.96	0.06	<0.01

Coverage factors: $w_{E_{ind, cube avg.}} = [5.56]$, $w_{E_{ind, local}} = [7.86]$, $w_{E_{ind, line avg.}} = [3.03]$