

DASY8 Module WPT Measurement Report

Device under test

Info:
1_Back_0mm

Tool info

DASY software version:
DASY8 Module WPT 2.4.0.4346

Probe model, serial no. and configuration date:
MAGPy-8H3D+E3Dv2, WP000211, 2023/05/09

Software version:
2.0.49, backend: 2.2.3

Scan info

Center location:
x: 109.64 mm, y: 178.37 mm, z: 34.14 mm

Dimensions:
x: 257.0 mm, y: 257.0 mm, z: 36.7 mm

Resolution:
x: 7.33 mm, y: 7.33 mm, z: 7.33 mm

Completed on:
2024/03/21

Measurement results

Maximum H-field [RMS]:

MAGNITUDE: 16.44 A/m

x: 1.22 A/m, y: 1.66 A/m, z: 16.31 A/m

Maximum H-field location relative to DUT:

x: -11.00 mm, y: -40.33 mm, z: 8.50 mm

Maximum E-field [RMS]:

MAGNITUDE: 19.72 V/m

x: 1.97 V/m, y: 755.35 mV/m, z: 19.60 V/m

Maximum E-field location relative to DUT:

x: -29.33 mm, y: -36.67 mm, z: 1.00 mm

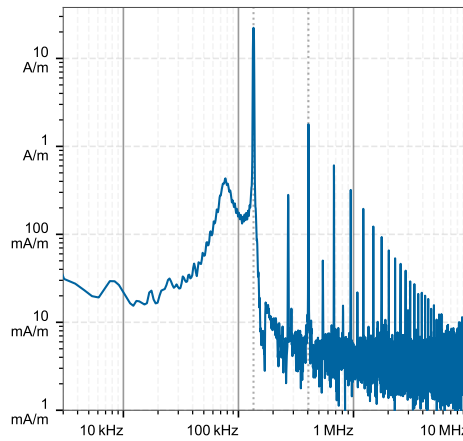
Distance to -20.0 dB boundary:

55.85 mm

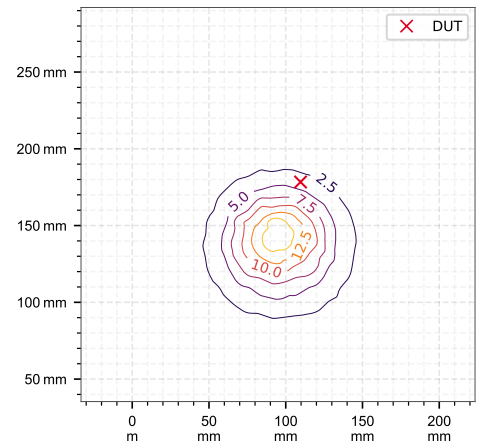
Offset relative to DUT:

x: 0.00 m, y: 0.00 m, z: 1.00 mm

H-field magnitude [RMS] at maximum location



H-field magnitude [RMS] at lowest plane



Incident fields, and induced quantities in the anatomical model

Distance [mm]	Peak incident fields [RMS]		Peak E_{ind} [V/m, RMS]			Peak J_{ind} [A/m ² , RMS]	psSAR [mW/kg]		H-field extent
	H_{inc} [A/m]	E_{inc} [V/m]	Cube avg.	Local	Line avg.	Surface avg.	1g avg.	10g avg.	-20 dB radius [mm]
0.0	29.7	19.7	0.208	0.212	0.212	0.136	0.0192	0.0107	51.6