



January 30, 2001

Supplement to SAR Test Report for Motorola portable cellular phone (FCC ID IHDT56AL1).

Prepared by:

Steven Hauswirth, Staff Engineer

Motorola Personal Communications Sector Product Safety Laboratory

Libertyville, Illinois

Contents

- 1) Summary of FCC request for additional information
- 2) Peak SAR locations for the body-worn SAR configurations

1. Summary of FCC request for additional information

There was a request for additional information regarding Motorola's SAR Test Report for Motorola portable cellular phone (FCC ID IHDT56AL1) dated January 11, 2001. The requested information may be summarized as follows:

Please identify the peak SAR locations for the body-worn SAR configurations. Note: PCS mode has different peak locations for antenna IN and OUT.

2. Peak SAR locations for the body-worn SAR configurations

The location of peak SAR when the phone is in the supplied belt-clip for PCS band is shown in figures 1 – 4.

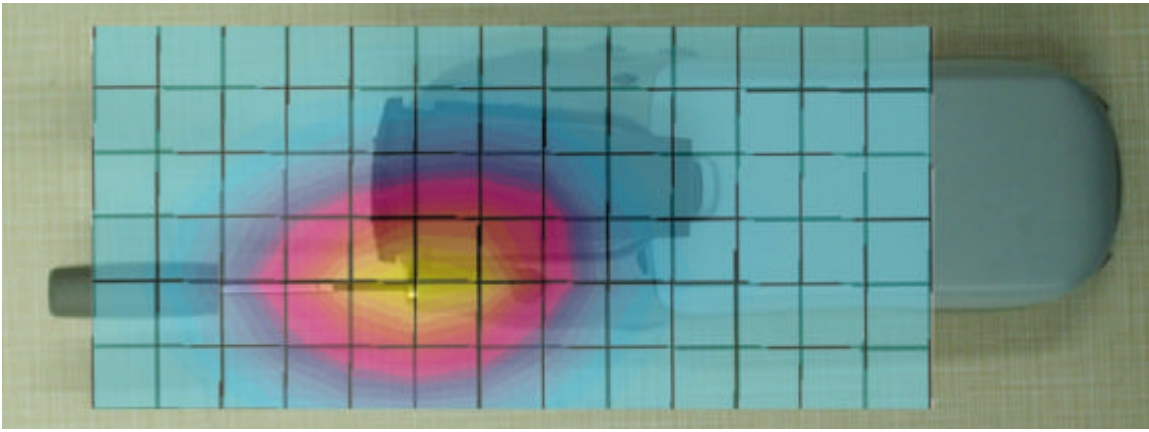


Figure 1. Body-worn 800MHz contour plot overlaid on the back of the phone with Antenna Extended

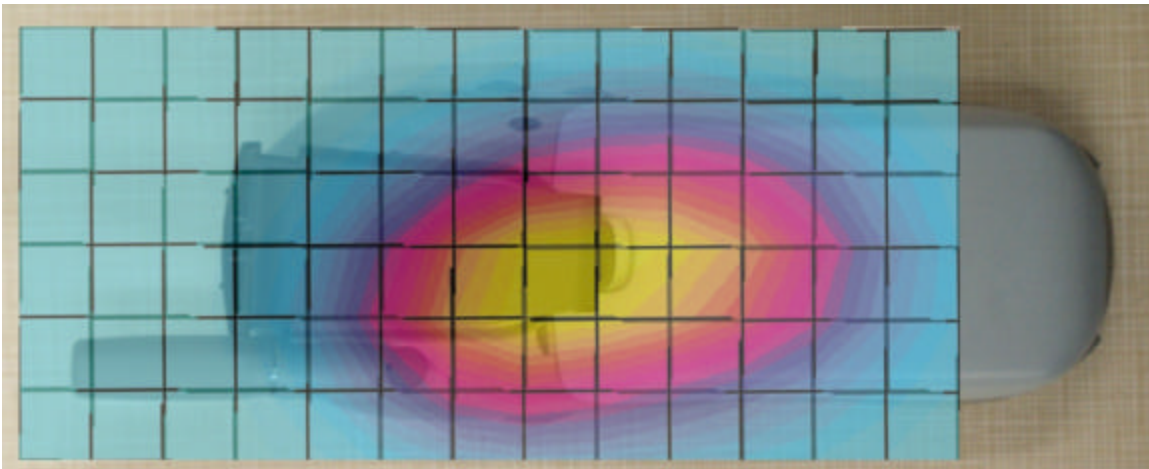


Figure 2. Body-worn 800MHz contour plot overlaid on the back of the phone with Antenna Retracted

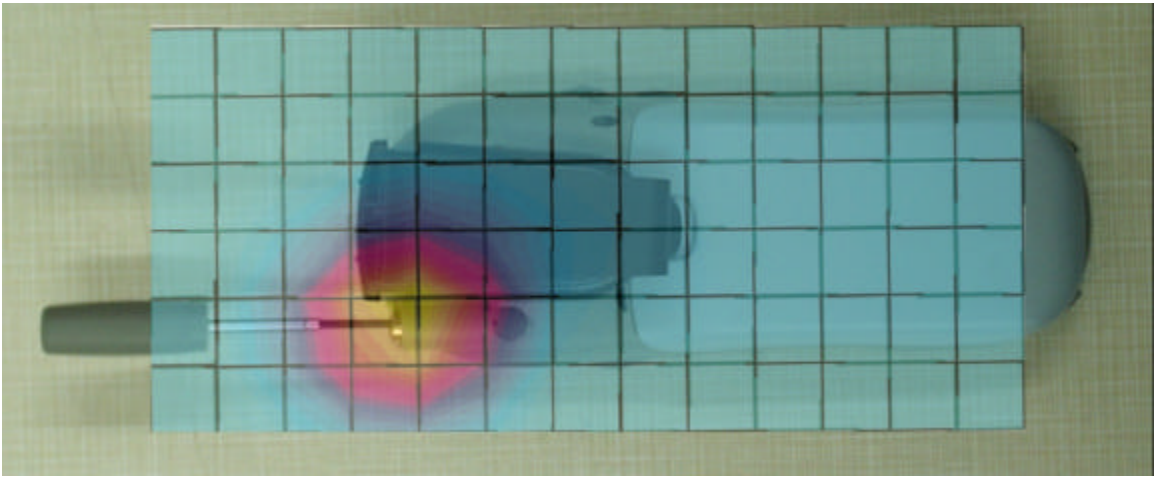


Figure 3. Body-worn 1900MHz contour plot overlaid on the back of the phone with Antenna Extended

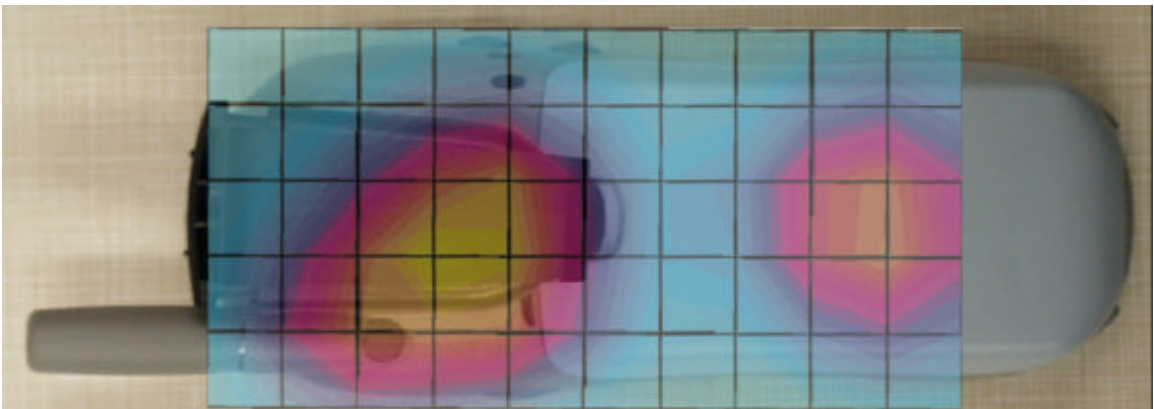


Figure 4. Body-worn 1900MHz contour plot overlaid on the back of the phone with Antenna Retracted