

### System Check\_Head\_2300MHz

**DUT: D2300V2 - SN:1055**

Communication System: UID 0, CW (0); Frequency: 2300 MHz; Duty Cycle: 1:1

Medium: HSL\_2300 Medium parameters used:  $f = 2300$  MHz;  $\sigma = 1.714$  S/m;  $\epsilon_r = 38.711$ ;  $\rho = 1000$  kg/m<sup>3</sup>

Ambient Temperature : 23.1 °C; Liquid Temperature : 22.9 °C

DASY5 Configuration:

- Probe: ES3DV3 - SN3279; ConvF(4.95, 4.95, 4.95); Calibrated: 2021.8.24
- Sensor-Surface: 3mm (Mechanical Surface Detection)
- Electronics: DAE4 Sn1356; Calibrated: 2021.6.1
- Phantom: SAM Twin Phantom; Type: SAM Twin; Serial: TP-1842
- Measurement SW: DASY52, Version 52.10 (4); SEMCAD X Version 14.6.14 (7483)

**Pin=50mW/Area Scan (71x71x1):** Interpolated grid: dx=1.200 mm, dy=1.200 mm  
Maximum value of SAR (interpolated) = 3.10 W/kg

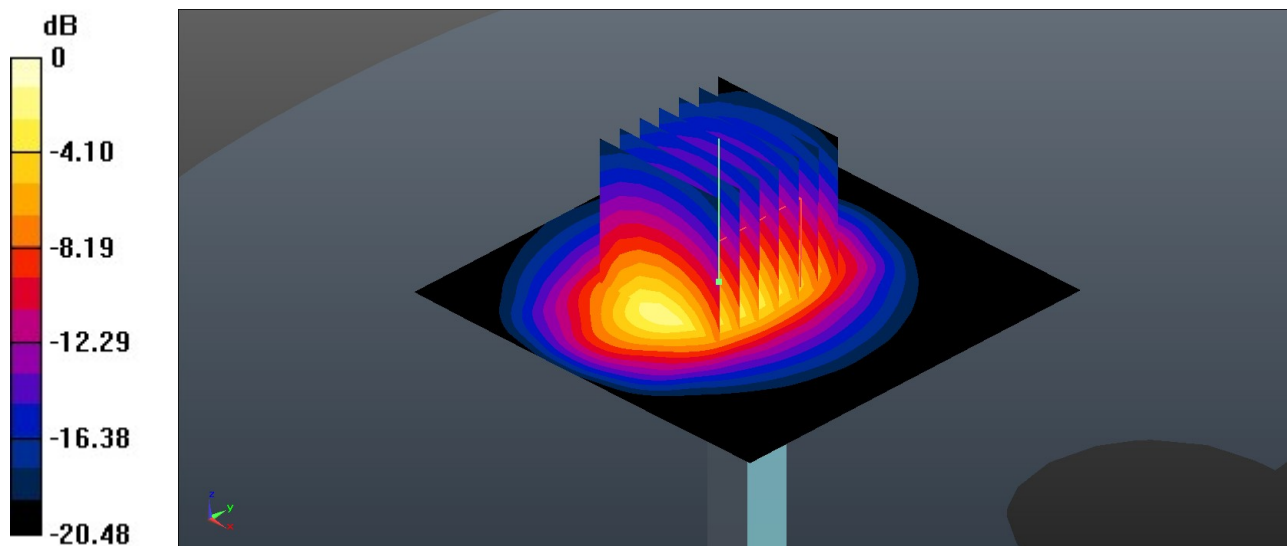
**Pin=50mW/Zoom Scan (7x7x7)/Cube 0:** Measurement grid: dx=5mm, dy=5mm, dz=5mm

Reference Value = 38.55 V/m; Power Drift = 0.04 dB

Peak SAR (extrapolated) = 4.62 W/kg

**SAR(1 g) = 2.33 W/kg; SAR(10 g) = 1.12 W/kg**

Maximum value of SAR (measured) = 3.02 W/kg



0 dB = 3.02 W/kg = 4.80 dBW/kg

### System Check\_Head\_2450MHz

**DUT: D2450V2 - SN:908**

Communication System: UID 0, CW (0); Frequency: 2450 MHz; Duty Cycle: 1:1

Medium: HSL\_2450 Medium parameters used:  $f = 2450$  MHz;  $\sigma = 1.805$  S/m;  $\epsilon_r = 38.548$ ;  $\rho = 1000$  kg/m<sup>3</sup>

Ambient Temperature : 23.3 °C; Liquid Temperature : 22.7 °C

DASY5 Configuration:

- Probe: ES3DV3 - SN3279; ConvF(4.75, 4.75, 4.75); Calibrated: 2021.8.24
- Sensor-Surface: 3mm (Mechanical Surface Detection)
- Electronics: DAE4 Sn1356; Calibrated: 2021.6.1
- Phantom: SAM Twin Phantom; Type: SAM Twin; Serial: TP-1842
- Measurement SW: DASY52, Version 52.10 (4); SEMCAD X Version 14.6.14 (7483)

**Pin=50mW/Area Scan (71x71x1):** Interpolated grid: dx=1.200 mm, dy=1.200 mm  
Maximum value of SAR (interpolated) = 3.45 W/kg

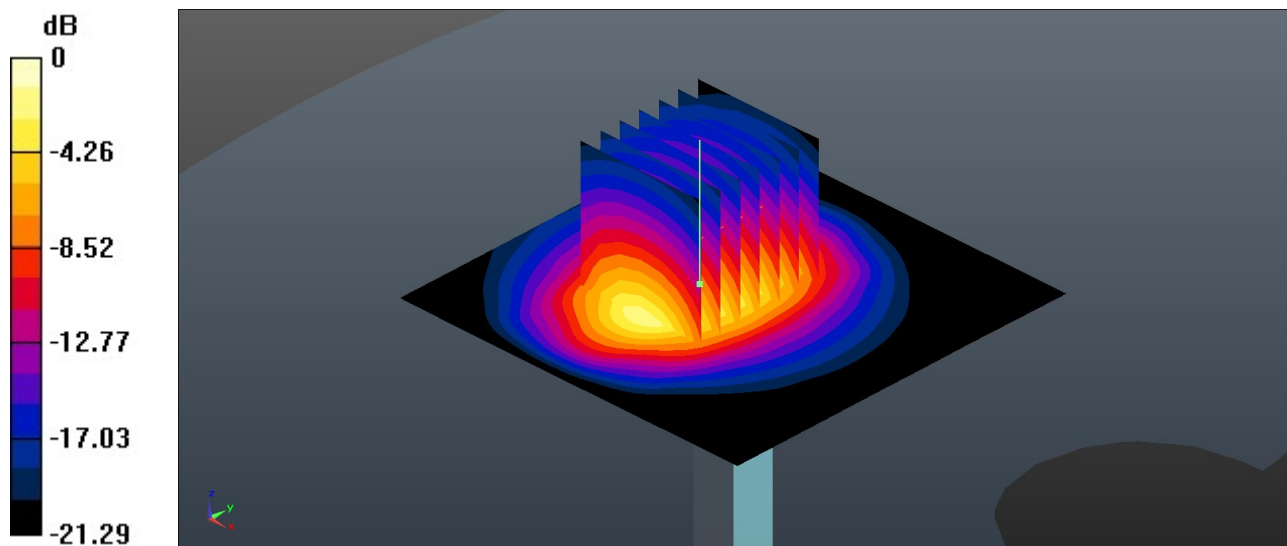
**Pin=50mW/Zoom Scan (7x7x7)/Cube 0:** Measurement grid: dx=5mm, dy=5mm, dz=5mm

Reference Value = 36.44 V/m; Power Drift = 0.02 dB

Peak SAR (extrapolated) = 5.14 W/kg

**SAR(1 g) = 2.53 W/kg; SAR(10 g) = 1.19 W/kg**

Maximum value of SAR (measured) = 3.31 W/kg



0 dB = 3.31 W/kg = 5.20 dBW/kg

### System Check\_Head\_2600MHz

**DUT: D2600V2 - SN:1061**

Communication System: UID 0, CW (0); Frequency: 2600 MHz; Duty Cycle: 1:1

Medium: HSL\_2600 Medium parameters used:  $f = 2600$  MHz;  $\sigma = 1.923$  S/m;  $\epsilon_r = 38.241$ ;  $\rho = 1000$  kg/m<sup>3</sup>

Ambient Temperature : 23.4 °C; Liquid Temperature : 22.6 °C

DASY5 Configuration:

- Probe: ES3DV3 - SN3279; ConvF(4.47, 4.47, 4.47); Calibrated: 2021.8.24
- Sensor-Surface: 3mm (Mechanical Surface Detection)
- Electronics: DAE4 Sn1356; Calibrated: 2021.6.1
- Phantom: SAM Twin Phantom; Type: SAM Twin; Serial: TP-1842
- Measurement SW: DASY52, Version 52.10 (4); SEMCAD X Version 14.6.14 (7483)

**Pin=50mW/Area Scan (71x71x1):** Interpolated grid: dx=1.200 mm, dy=1.200 mm  
Maximum value of SAR (interpolated) = 3.61 W/kg

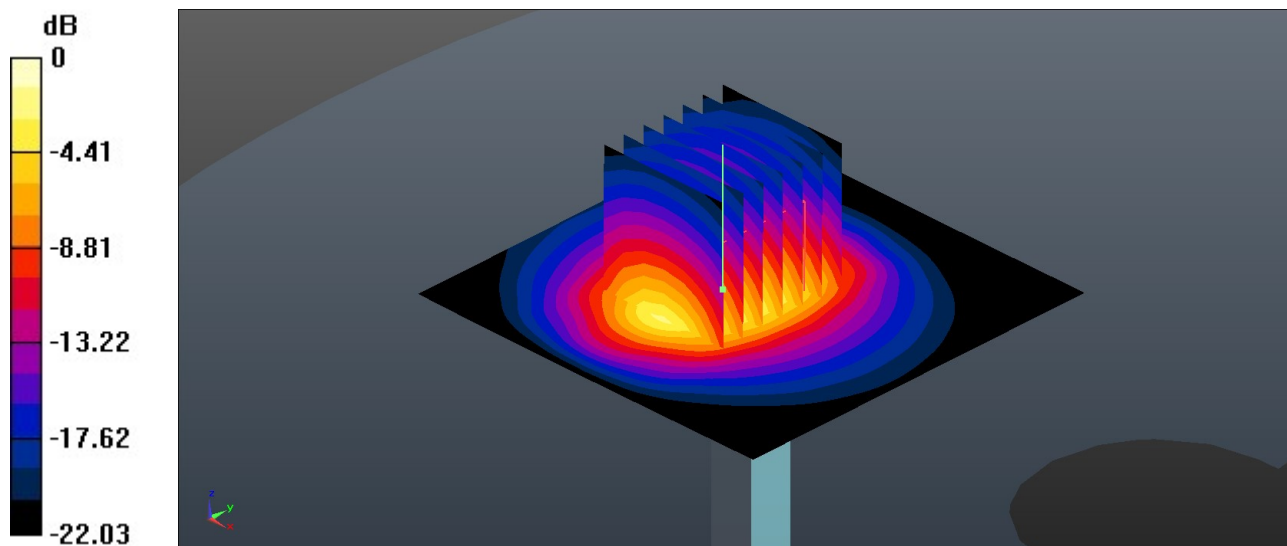
**Pin=50mW/Zoom Scan (7x7x7)/Cube 0:** Measurement grid: dx=5mm, dy=5mm, dz=5mm

Reference Value = 40.28 V/m; Power Drift = 0.05 dB

Peak SAR (extrapolated) = 5.58 W/kg

**SAR(1 g) = 2.65 W/kg; SAR(10 g) = 1.19 W/kg**

Maximum value of SAR (measured) = 3.53 W/kg



0 dB = 3.53 W/kg = 5.48 dBW/kg

### System Check\_Head\_3500MHz

**DUT: D3500V2 - SN:1037**

Communication System: UID 0, CW (0); Frequency: 3500 MHz; Duty Cycle: 1:1

Medium: HSL\_3500 Medium parameters used:  $f = 3500$  MHz;  $\sigma = 2.833$  S/m;  $\epsilon_r = 39.046$ ;  $\rho = 1000$  kg/m<sup>3</sup>

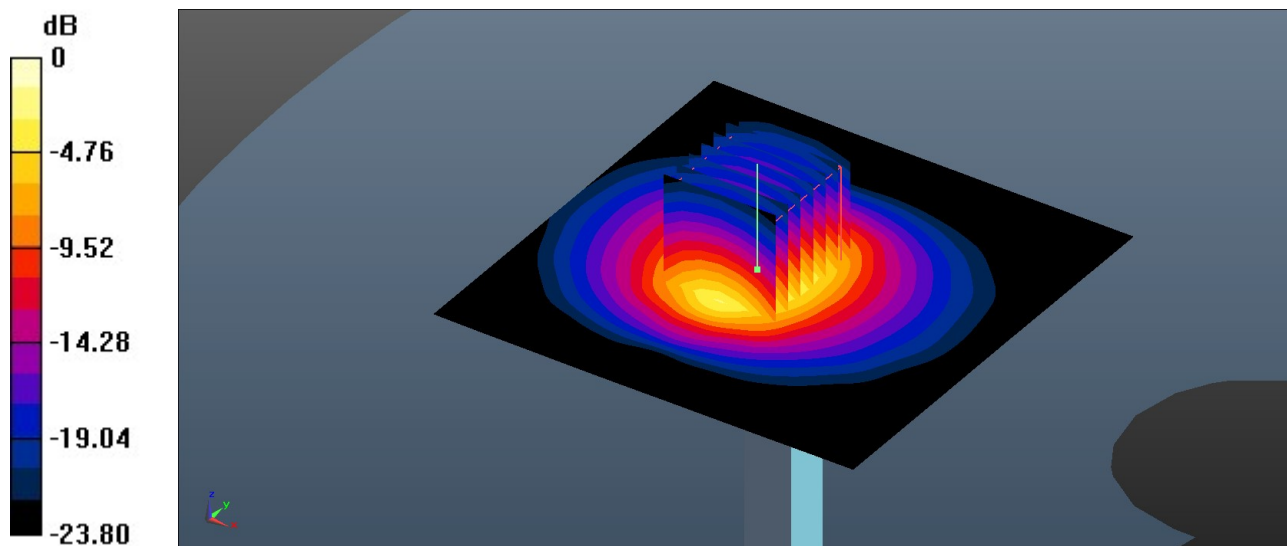
Ambient Temperature : 23.2 °C; Liquid Temperature : 22.6 °C

DASY5 Configuration:

- Probe: EX3DV4 - SN7684; ConvF(7.37, 7.37, 7.37); Calibrated: 2021.10.4
- Sensor-Surface: 1.4mm (Mechanical Surface Detection)
- Electronics: DAE4 Sn1303; Calibrated: 2021.6.18
- Phantom: SAM Twin Phantom; Type: SAM Twin; Serial: TP-1697
- Measurement SW: DASY52, Version 52.10 (4); SEMCAD X Version 14.6.14 (7483)

**Pin=50mW/Area Scan (91x91x1):** Interpolated grid: dx=1.000 mm, dy=1.000 mm  
Maximum value of SAR (interpolated) = 6.12 W/kg

**Pin=50mW/Zoom Scan (7x7x7)/Cube 0:** Measurement grid: dx=4mm, dy=4mm, dz=1.4mm  
Reference Value = 42.90 V/m; Power Drift = 0.05 dB  
Peak SAR (extrapolated) = 8.11 W/kg  
**SAR(1 g) = 3.2 W/kg; SAR(10 g) = 1.19 W/kg**  
Maximum value of SAR (measured) = 6.03 W/kg



0 dB = 6.03 W/kg = 7.80 dBW/kg

### System Check\_Head\_3700MHz

**DUT: D3700V2 - SN:1008**

Communication System: UID 0, CW (0); Frequency: 3700 MHz; Duty Cycle: 1:1

Medium: HSL\_3700 Medium parameters used:  $f = 3700$  MHz;  $\sigma = 3.023$  S/m;  $\epsilon_r = 38.719$ ;  $\rho = 1000$  kg/m<sup>3</sup>

Ambient Temperature : 23.1 °C; Liquid Temperature : 22.9 °C

DASY5 Configuration:

- Probe: EX3DV4 - SN7684; ConvF(7.27, 7.27, 7.27); Calibrated: 2021.10.4
- Sensor-Surface: 1.4mm (Mechanical Surface Detection)
- Electronics: DAE4 Sn1303; Calibrated: 2021.6.18
- Phantom: SAM Twin Phantom; Type: SAM Twin; Serial: TP-1697
- Measurement SW: DASY52, Version 52.10 (4); SEMCAD X Version 14.6.14 (7483)

**Pin=50mW/Area Scan (91x91x1):** Interpolated grid: dx=1.000 mm, dy=1.000 mm  
Maximum value of SAR (interpolated) = 6.27 W/kg

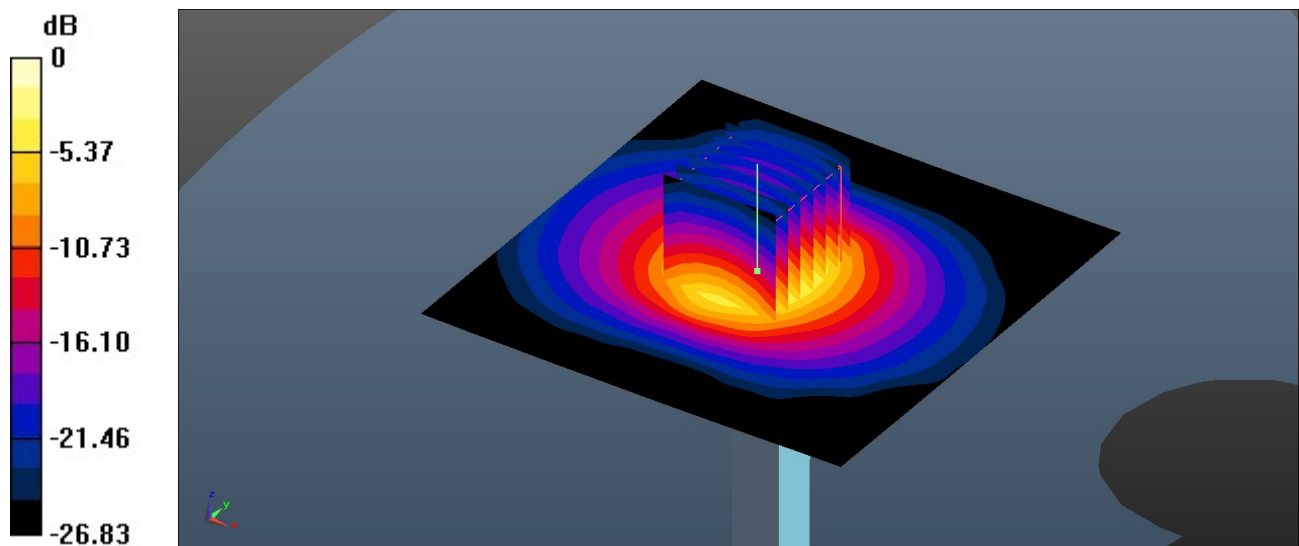
**Pin=50mW/Zoom Scan (7x7x7)/Cube 0:** Measurement grid: dx=4mm, dy=4mm, dz=1.4mm

Reference Value = 45.67 V/m; Power Drift = 0.08 dB

Peak SAR (extrapolated) = 8.76 W/kg

**SAR(1 g) = 3.11 W/kg; SAR(10 g) = 1.13 W/kg**

Maximum value of SAR (measured) = 6.21 W/kg



0 dB = 6.21 W/kg = 7.93 dBW/kg

### System Check\_Head\_3900MHz

**DUT: D3900V2 - SN:1048**

Communication System: UID 0, CW (0); Frequency: 3900 MHz; Duty Cycle: 1:1

Medium: HSL\_3900 Medium parameters used:  $f = 3900$  MHz;  $\sigma = 3.226$  S/m;  $\epsilon_r = 38.42$ ;  $\rho = 1000$  kg/m<sup>3</sup>

Ambient Temperature : 23.2 °C; Liquid Temperature : 22.6 °C

DASY5 Configuration:

- Probe: EX3DV4 - SN7684; ConvF(6.83, 6.83, 6.83); Calibrated: 2021.10.4
- Sensor-Surface: 1.4mm (Mechanical Surface Detection)
- Electronics: DAE4 Sn1303; Calibrated: 2021.6.18
- Phantom: SAM Twin Phantom; Type: SAM Twin; Serial: TP-1697
- Measurement SW: DASY52, Version 52.10 (4); SEMCAD X Version 14.6.14 (7483)

**Pin=50mW/Area Scan (91x91x1):** Interpolated grid: dx=1.000 mm, dy=1.000 mm  
Maximum value of SAR (interpolated) = 6.64 W/kg

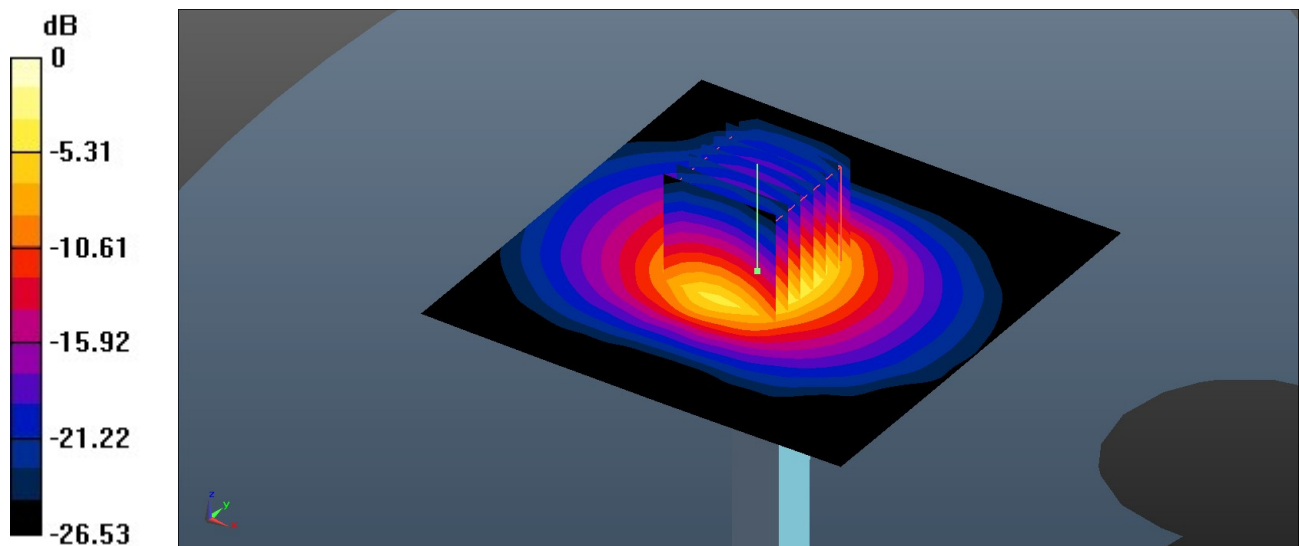
**Pin=50mW/Zoom Scan (7x7x7)/Cube 0:** Measurement grid: dx=4mm, dy=4mm, dz=1.4mm

Reference Value = 47.12 V/m; Power Drift = 0.08 dB

Peak SAR (extrapolated) = 8.78 W/kg

**SAR(1 g) = 3.26 W/kg; SAR(10 g) = 1.16 W/kg**

Maximum value of SAR (measured) = 6.58 W/kg



0 dB = 6.58 W/kg = 8.18 dBW/kg

### System Check\_Head\_5250MHz

**DUT: D5GHzV2 - SN:1113**

Communication System: UID 0, CW (0); Frequency: 5250 MHz; Duty Cycle: 1:1  
Medium: HSL\_5250 Medium parameters used:  $f = 5250$  MHz;  $\sigma = 4.569$  S/m;  $\epsilon_r = 35.986$ ;  $\rho = 1000$  kg/m<sup>3</sup>

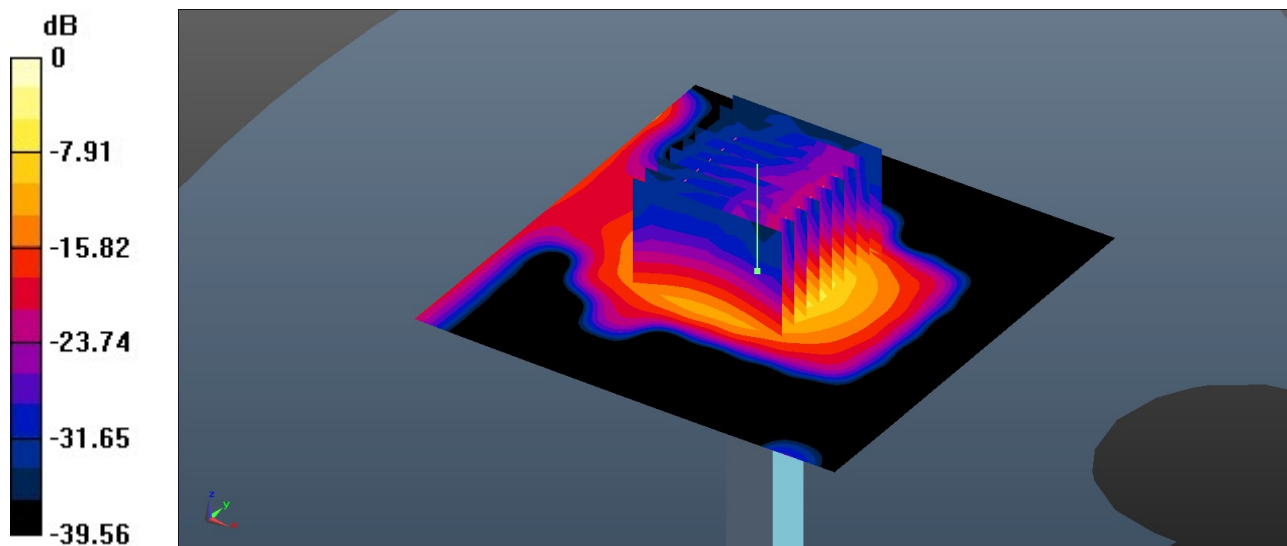
Ambient Temperature : 23.3 °C; Liquid Temperature : 22.8 °C

#### DASY5 Configuration:

- Probe: EX3DV4 - SN7684; ConvF(5.85, 5.85, 5.85); Calibrated: 2021.10.4
- Sensor-Surface: 1.4mm (Mechanical Surface Detection)
- Electronics: DAE4 Sn1303; Calibrated: 2021.6.18
- Phantom: SAM Twin Phantom; Type: SAM Twin; Serial: TP-1697
- Measurement SW: DASY52, Version 52.10 (4); SEMCAD X Version 14.6.14 (7483)

**Pin=50mW/Area Scan (91x91x1):** Interpolated grid: dx=1.000 mm, dy=1.000 mm  
Maximum value of SAR (interpolated) = 8.33 W/kg

**Pin=50mW/Zoom Scan (9x9x7)/Cube 0:** Measurement grid: dx=4mm, dy=4mm, dz=1.4mm  
Reference Value = 46.84 V/m; Power Drift = 0.06 dB  
Peak SAR (extrapolated) = 13.8 W/kg  
**SAR(1 g) = 3.79 W/kg; SAR(10 g) = 1.12 W/kg**  
Maximum value of SAR (measured) = 8.61 W/kg



0 dB = 8.61 W/kg = 9.35 dBW/kg

### System Check\_Head\_5600MHz

#### DUT: D5GHzV2 - SN:1113

Communication System: UID 0, CW (0); Frequency: 5600 MHz; Duty Cycle: 1:1  
Medium: HSL\_5600 Medium parameters used:  $f = 5600$  MHz;  $\sigma = 4.968$  S/m;  $\epsilon_r = 35.434$ ;  $\rho = 1000$  kg/m<sup>3</sup>

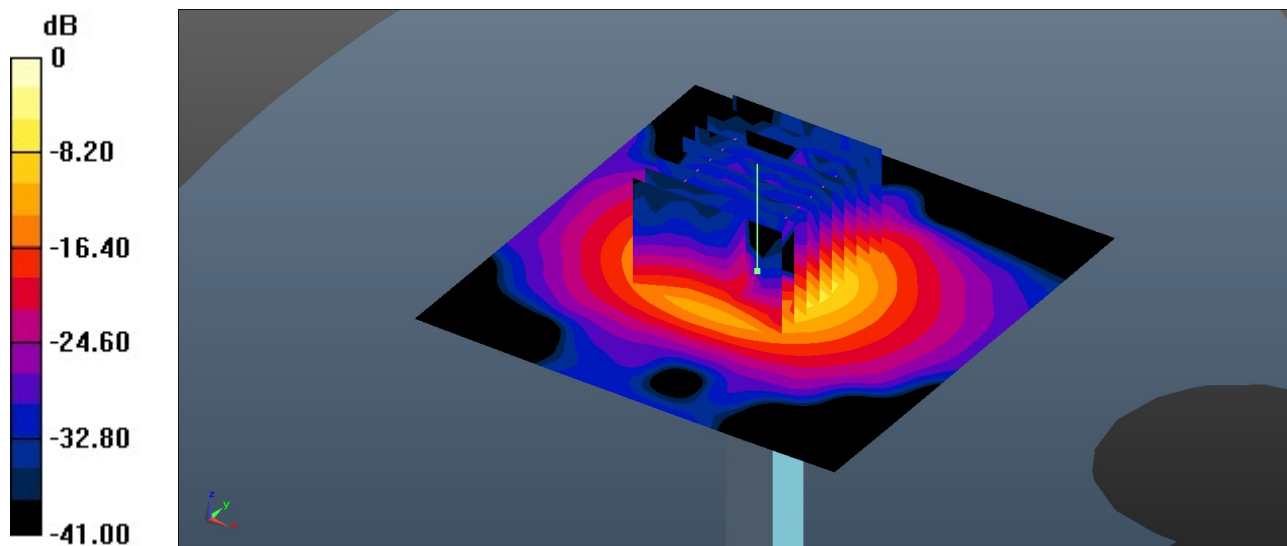
Ambient Temperature : 23.3 °C; Liquid Temperature : 22.8 °C

#### DASY5 Configuration:

- Probe: EX3DV4 - SN7684; ConvF(5.05, 5.05, 5.05); Calibrated: 2021.10.4
- Sensor-Surface: 1.4mm (Mechanical Surface Detection)
- Electronics: DAE4 Sn1303; Calibrated: 2021.6.18
- Phantom: SAM Twin Phantom; Type: SAM Twin; Serial: TP-1697
- Measurement SW: DASY52, Version 52.10 (4); SEMCAD X Version 14.6.14 (7483)

**Pin=50mW/Area Scan (91x91x1):** Interpolated grid: dx=1.000 mm, dy=1.000 mm  
Maximum value of SAR (interpolated) = 10.0 W/kg

**Pin=50mW/Zoom Scan (9x9x7)/Cube 0:** Measurement grid: dx=4mm, dy=4mm, dz=1.4mm  
Reference Value = 49.12 V/m; Power Drift = 0.08 dB  
Peak SAR (extrapolated) = 17.8 W/kg  
**SAR(1 g) = 4.07 W/kg; SAR(10 g) = 1.15 W/kg**  
Maximum value of SAR (measured) = 10.4 W/kg



0 dB = 10.4 W/kg = 10.17 dBW/kg

### System Check\_Head\_5750MHz

**DUT: D5GHzV2 - SN:1113**

Communication System: UID 0, CW (0); Frequency: 5750 MHz; Duty Cycle: 1:1  
Medium: HSL\_5000 Medium parameters used:  $f = 5750 \text{ MHz}$ ;  $\sigma = 5.14 \text{ S/m}$ ;  $\epsilon_r = 35.236$ ;  $\rho = 1000 \text{ kg/m}^3$

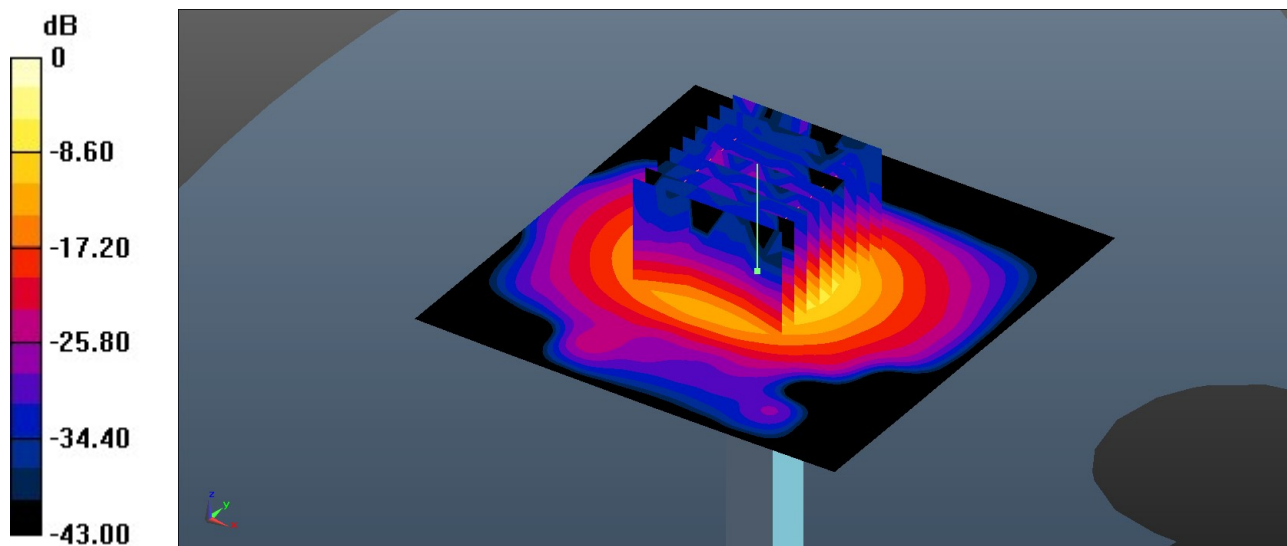
Ambient Temperature : 23.3 °C; Liquid Temperature : 22.8 °C

#### DASY5 Configuration:

- Probe: EX3DV4 - SN7684; ConvF(5.25, 5.25, 5.25); Calibrated: 2021.10.4
- Sensor-Surface: 1.4mm (Mechanical Surface Detection)
- Electronics: DAE4 Sn1303; Calibrated: 2021.6.18
- Phantom: SAM Twin Phantom; Type: SAM Twin; Serial: TP-1697
- Measurement SW: DASY52, Version 52.10 (4); SEMCAD X Version 14.6.14 (7483)

**Pin=50mW/Area Scan (91x91x1):** Interpolated grid:  $dx=1.000 \text{ mm}$ ,  $dy=1.000 \text{ mm}$   
Maximum value of SAR (interpolated) = 8.96 W/kg

**Pin=50mW/Zoom Scan (9x9x7)/Cube 0:** Measurement grid:  $dx=4\text{mm}$ ,  $dy=4\text{mm}$ ,  $dz=1.4\text{mm}$   
Reference Value = 45.50 V/m; Power Drift = 0.06 dB  
Peak SAR (extrapolated) = 16.7 W/kg  
**SAR(1 g) = 3.72 W/kg; SAR(10 g) = 1.13 W/kg**  
Maximum value of SAR (measured) = 9.53 W/kg



0 dB = 9.53 W/kg = 9.79 dBW/kg

### System Check\_Head\_750MHz

**DUT: D750V3 - SN:1087**

Communication System: UID 0, CW (0); Frequency: 750 MHz; Duty Cycle: 1:1  
Medium: HSL\_750 Medium parameters used:  $f = 750$  MHz;  $\sigma = 0.9$  S/m;  $\epsilon_r = 41.203$ ;  $\rho = 1000$  kg/m<sup>3</sup>

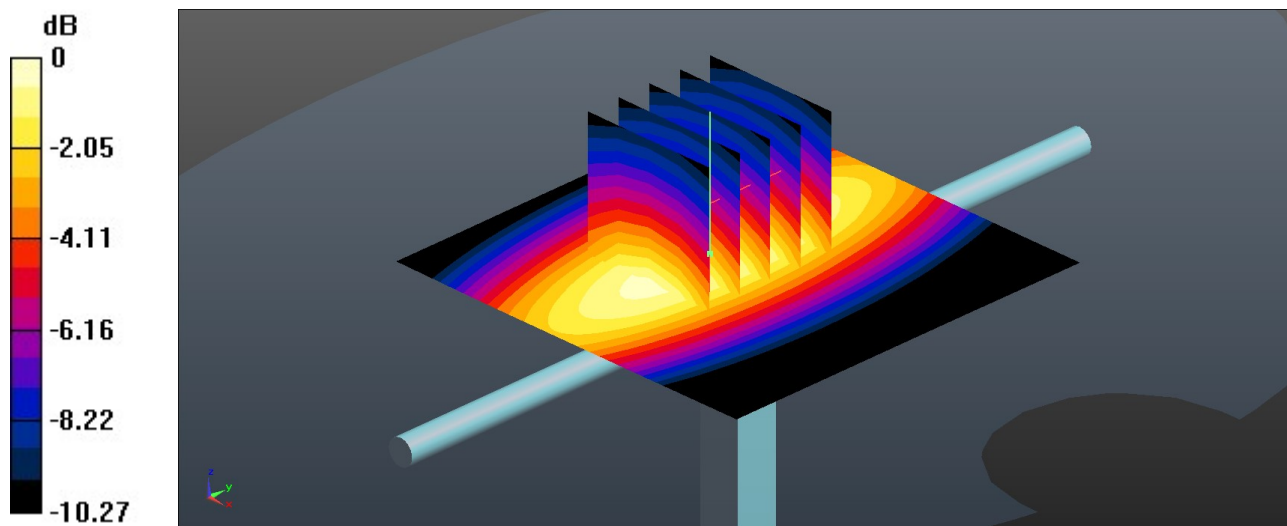
Ambient Temperature : 23.1 °C; Liquid Temperature : 22.6 °C

DASY5 Configuration:

- Probe: ES3DV3 - SN3279; ConvF(6.48, 6.48, 6.48); Calibrated: 2021.8.24
- Sensor-Surface: 3mm (Mechanical Surface Detection)
- Electronics: DAE4 Sn1356; Calibrated: 2021.6.1
- Phantom: SAM Twin Phantom; Type: SAM Twin; Serial: TP-1842
- Measurement SW: DASY52, Version 52.10 (4); SEMCAD X Version 14.6.14 (7483)

**Pin=50mW/Area Scan (61x61x1):** Interpolated grid: dx=1.500 mm, dy=1.500 mm  
Maximum value of SAR (interpolated) = 0.458 W/kg

**Pin=50mW/Zoom Scan (5x5x7)/Cube 0:** Measurement grid: dx=8mm, dy=8mm, dz=5mm  
Reference Value = 22.31 V/m; Power Drift = 0.17 dB  
Peak SAR (extrapolated) = 0.593 W/kg  
**SAR(1 g) = 0.430 W/kg; SAR(10 g) = 0.304 W/kg**  
Maximum value of SAR (measured) = 0.468 W/kg



0 dB = 0.468 W/kg = -3.30 dBW/kg

### System Check\_Head\_835MHz

**DUT: D835V2 - SN:4d258**

Communication System: UID 0, CW (0); Frequency: 835 MHz; Duty Cycle: 1:1

Medium: HSL\_835 Medium parameters used:  $f = 835$  MHz;  $\sigma = 0.929$  S/m;  $\epsilon_r = 40.938$ ;  $\rho = 1000$  kg/m<sup>3</sup>

Ambient Temperature : 23.3 °C; Liquid Temperature : 22.8 °C

DASY5 Configuration:

- Probe: ES3DV3 - SN3279; ConvF(6.23, 6.23, 6.23); Calibrated: 2021.8.24
- Sensor-Surface: 3mm (Mechanical Surface Detection)
- Electronics: DAE4 Sn1356; Calibrated: 2021.6.1
- Phantom: SAM Twin Phantom; Type: SAM Twin; Serial: TP-1842
- Measurement SW: DASY52, Version 52.10 (4); SEMCAD X Version 14.6.14 (7483)

**Pin=50mW/Area Scan (61x61x1):** Interpolated grid: dx=1.500 mm, dy=1.500 mm  
Maximum value of SAR (interpolated) = 0.581 W/kg

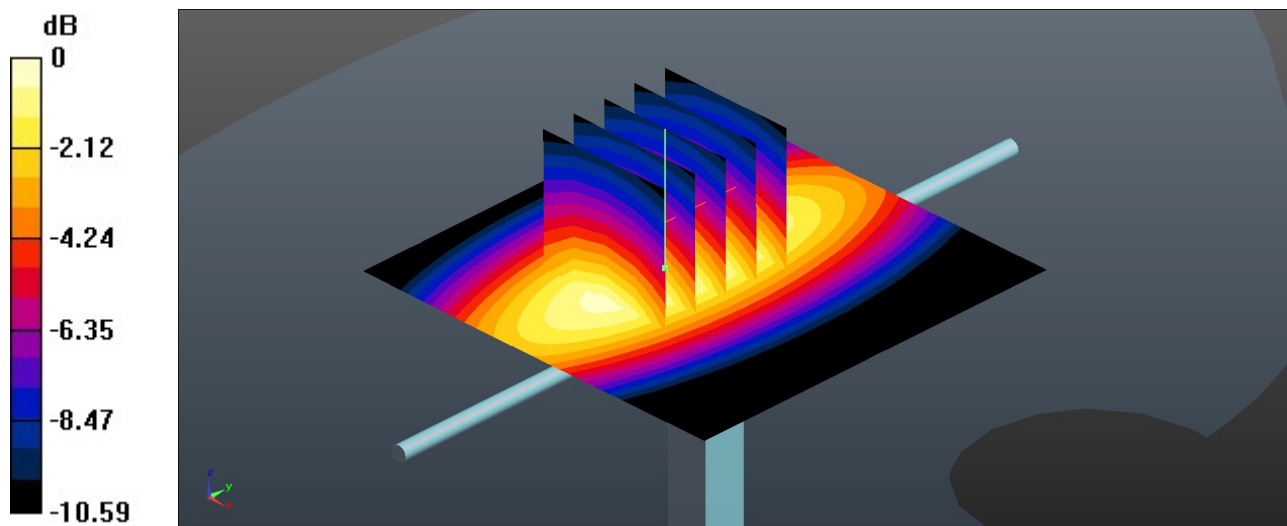
**Pin=50mW/Zoom Scan (5x5x7)/Cube 0:** Measurement grid: dx=8mm, dy=8mm, dz=5mm

Reference Value = 24.73 V/m; Power Drift = 0.16 dB

Peak SAR (extrapolated) = 0.741 W/kg

**SAR(1 g) = 0.457 W/kg; SAR(10 g) = 0.307 W/kg**

Maximum value of SAR (measured) = 0.585 W/kg



0 dB = 0.585 W/kg = -2.33 dBW/kg

### System Check\_Head\_1750MHz

**DUT: D1750V2 - SN:1090**

Communication System: UID 0, CW (0); Frequency: 1750 MHz; Duty Cycle: 1:1

Medium: HSL\_1750 Medium parameters used:  $f = 1750$  MHz;  $\sigma = 1.375$  S/m;  $\epsilon_r = 39.868$ ;  $\rho = 1000$  kg/m<sup>3</sup>

Ambient Temperature : 23.1 °C; Liquid Temperature : 22.8 °C

DASY5 Configuration:

- Probe: ES3DV3 - SN3279; ConvF(5.52, 5.52, 5.52); Calibrated: 2021.8.24
- Sensor-Surface: 3mm (Mechanical Surface Detection)
- Electronics: DAE4 Sn1356; Calibrated: 2021.6.1
- Phantom: SAM Twin Phantom; Type: SAM Twin; Serial: TP-1842
- Measurement SW: DASY52, Version 52.10 (4); SEMCAD X Version 14.6.14 (7483)

**Pin=50mW/Area Scan (61x61x1):** Interpolated grid: dx=1.500 mm, dy=1.500 mm  
 Maximum value of SAR (interpolated) = 2.35 W/kg

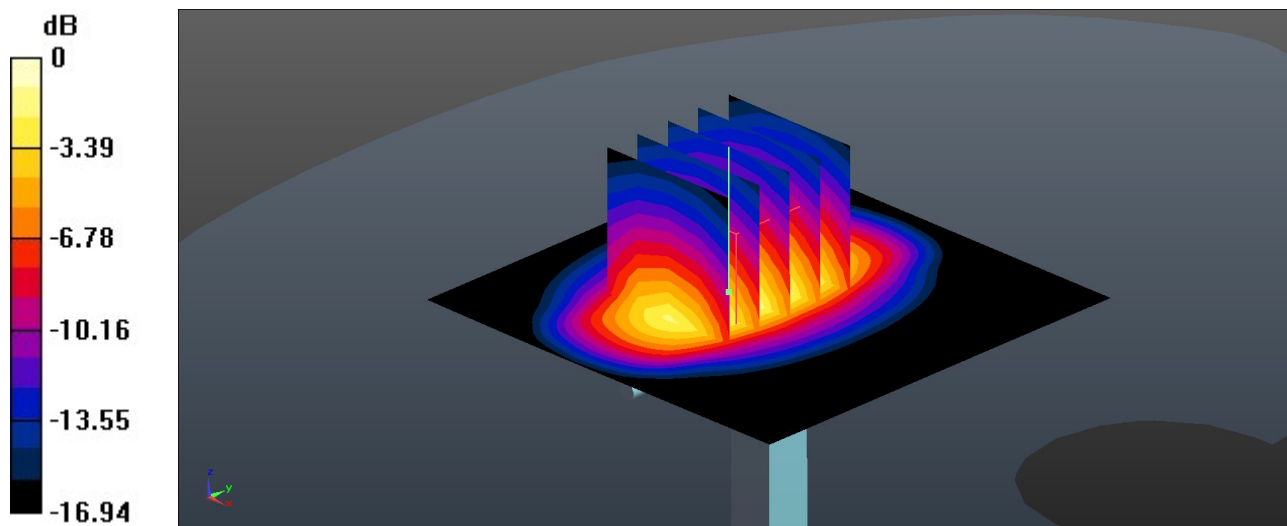
**Pin=50mW/Zoom Scan (5x5x7)/Cube 0:** Measurement grid: dx=8mm, dy=8mm, dz=5mm

Reference Value = 35.79 V/m; Power Drift = 0.01 dB

Peak SAR (extrapolated) = 3.27 W/kg

**SAR(1 g) = 1.71 W/kg; SAR(10 g) = 0.950 W/kg**

Maximum value of SAR (measured) = 2.30 W/kg



0 dB = 2.30 W/kg = 3.62 dBW/kg

### System Check\_Head\_1900MHz

**DUT: D1900V2 - SN:5d170**

Communication System: UID 0, CW (0); Frequency: 1900 MHz; Duty Cycle: 1:1

Medium: HSL\_1900 Medium parameters used:  $f = 1900$  MHz;  $\sigma = 1.453$  S/m;  $\epsilon_r = 39.68$ ;  $\rho = 1000$  kg/m<sup>3</sup>

Ambient Temperature : 23.4 °C; Liquid Temperature : 22.6 °C

DASY5 Configuration:

- Probe: ES3DV3 - SN3279; ConvF(5.28, 5.28, 5.28); Calibrated: 2021.8.24
- Sensor-Surface: 3mm (Mechanical Surface Detection)
- Electronics: DAE4 Sn1356; Calibrated: 2021.6.1
- Phantom: SAM Twin Phantom; Type: SAM Twin; Serial: TP-1842
- Measurement SW: DASY52, Version 52.10 (4); SEMCAD X Version 14.6.14 (7483)

**Pin=50mW/Area Scan (61x61x1):** Interpolated grid: dx=1.500 mm, dy=1.500 mm  
Maximum value of SAR (interpolated) = 2.65 W/kg

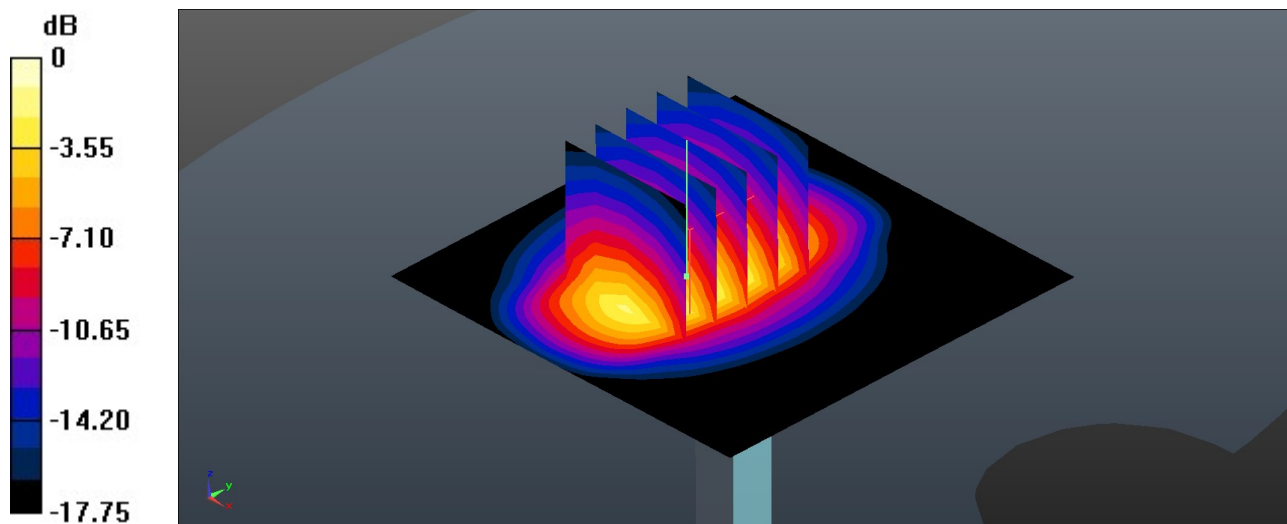
**Pin=50mW/Zoom Scan (5x5x7)/Cube 0:** Measurement grid: dx=8mm, dy=8mm, dz=5mm

Reference Value = 36.02 V/m; Power Drift = 0.05 dB

Peak SAR (extrapolated) = 3.62 W/kg

**SAR(1 g) = 2.01 W/kg; SAR(10 g) = 1.07 W/kg**

Maximum value of SAR (measured) = 2.50 W/kg



0 dB = 2.50 W/kg = 3.98 dBW/kg

**System Check\_Head\_2300MHz**

**DUT: D2300V2 - SN:1055**

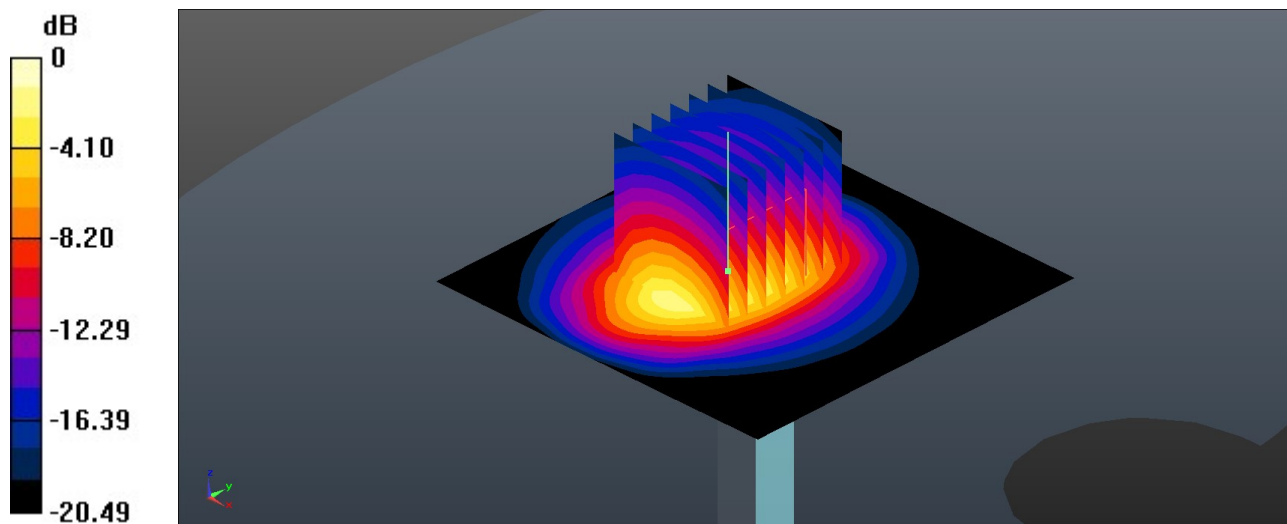
Communication System: UID 0, CW (0); Frequency: 2300 MHz;Duty Cycle: 1:1  
 Medium: HSL\_2300 Medium parameters used:  $f = 2300$  MHz;  $\sigma = 1.718$  S/m;  $\epsilon_r = 38.679$ ;  $\rho = 1000$  kg/m<sup>3</sup>  
 Ambient Temperature : 23.3 °C; Liquid Temperature : 22.7 °C

**DASY5 Configuration:**

- Probe: ES3DV3 - SN3279; ConvF(4.95, 4.95, 4.95); Calibrated: 2021.8.24
- Sensor-Surface: 3mm (Mechanical Surface Detection)
- Electronics: DAE4 Sn1356; Calibrated: 2021.6.1
- Phantom: SAM Twin Phantom; Type: SAM Twin; Serial: TP-1842
- Measurement SW: DASY52, Version 52.10 (4); SEMCAD X Version 14.6.14 (7483)

**Pin=50mW/Area Scan (71x71x1):** Interpolated grid: dx=1.200 mm, dy=1.200 mm  
 Maximum value of SAR (interpolated) = 3.11 W/kg

**Pin=50mW/Zoom Scan (7x7x7)/Cube 0:** Measurement grid: dx=5mm, dy=5mm, dz=5mm  
 Reference Value = 38.55 V/m; Power Drift = 0.04 dB  
 Peak SAR (extrapolated) = 4.64 W/kg  
**SAR(1 g) = 2.51 W/kg; SAR(10 g) = 1.18 W/kg**  
 Maximum value of SAR (measured) = 3.03 W/kg



0 dB = 3.03 W/kg = 4.81 dBW/kg

### System Check\_Head\_2450MHz

**DUT: D2450V2 - SN:908**

Communication System: UID 0, CW (0); Frequency: 2450 MHz; Duty Cycle: 1:1

Medium: HSL\_2450 Medium parameters used:  $f = 2450$  MHz;  $\sigma = 1.808$  S/m;  $\epsilon_r = 38.517$ ;  $\rho = 1000$  kg/m<sup>3</sup>

Ambient Temperature : 23.1 °C; Liquid Temperature : 22.9 °C

DASY5 Configuration:

- Probe: ES3DV3 - SN3279; ConvF(4.75, 4.75, 4.75); Calibrated: 2021.8.24
- Sensor-Surface: 3mm (Mechanical Surface Detection)
- Electronics: DAE4 Sn1356; Calibrated: 2021.6.1
- Phantom: SAM Twin Phantom; Type: SAM Twin; Serial: TP-1842
- Measurement SW: DASY52, Version 52.10 (4); SEMCAD X Version 14.6.14 (7483)

**Pin=50mW/Area Scan (71x71x1):** Interpolated grid: dx=1.200 mm, dy=1.200 mm  
Maximum value of SAR (interpolated) = 3.45 W/kg

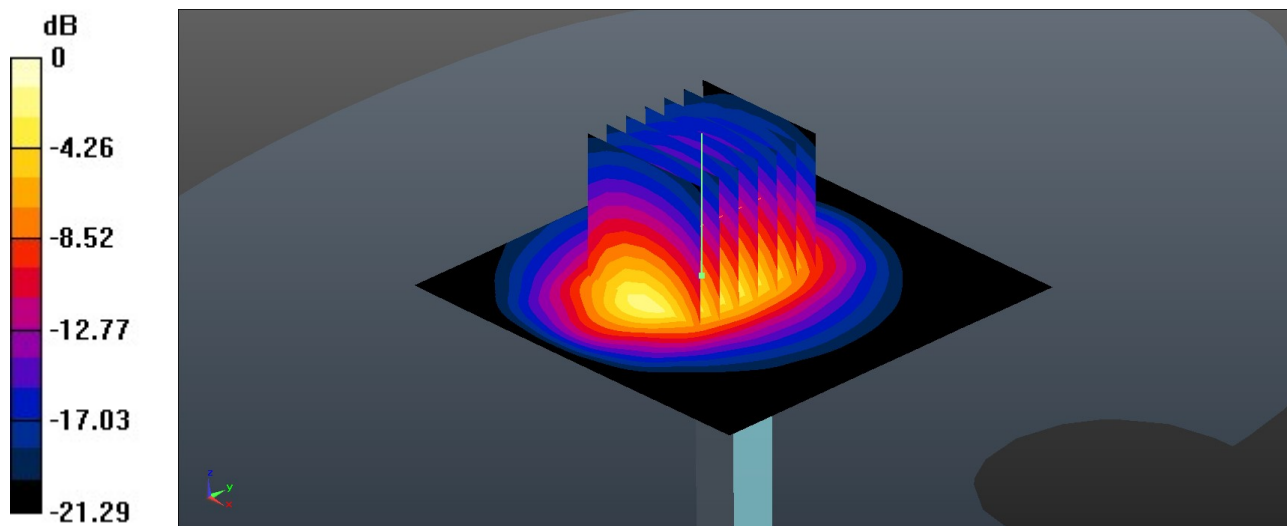
**Pin=50mW/Zoom Scan (7x7x7)/Cube 0:** Measurement grid: dx=5mm, dy=5mm, dz=5mm

Reference Value = 36.44 V/m; Power Drift = 0.02 dB

Peak SAR (extrapolated) = 5.15 W/kg

**SAR(1 g) = 2.68 W/kg; SAR(10 g) = 1.21 W/kg**

Maximum value of SAR (measured) = 3.32 W/kg



0 dB = 3.32 W/kg = 5.21 dBW/kg

### System Check\_Head\_2600MHz

**DUT: D2600V2 - SN:1061**

Communication System: UID 0, CW (0); Frequency: 2600 MHz; Duty Cycle: 1:1

Medium: HSL\_2600 Medium parameters used:  $f = 2600$  MHz;  $\sigma = 1.975$  S/m;  $\epsilon_r = 40.599$ ;  $\rho = 1000$  kg/m<sup>3</sup>

Ambient Temperature : 23.2 °C; Liquid Temperature : 22.8 °C

DASY5 Configuration:

- Probe: ES3DV3 - SN3279; ConvF(4.47, 4.47, 4.47); Calibrated: 2021.8.24
- Sensor-Surface: 3mm (Mechanical Surface Detection)
- Electronics: DAE4 Sn1356; Calibrated: 2021.6.1
- Phantom: SAM Twin Phantom; Type: SAM Twin; Serial: TP-1842
- Measurement SW: DASY52, Version 52.10 (4); SEMCAD X Version 14.6.14 (7483)

**Pin=50mW/Area Scan (71x71x1):** Interpolated grid: dx=1.200 mm, dy=1.200 mm  
Maximum value of SAR (interpolated) = 3.71 W/kg

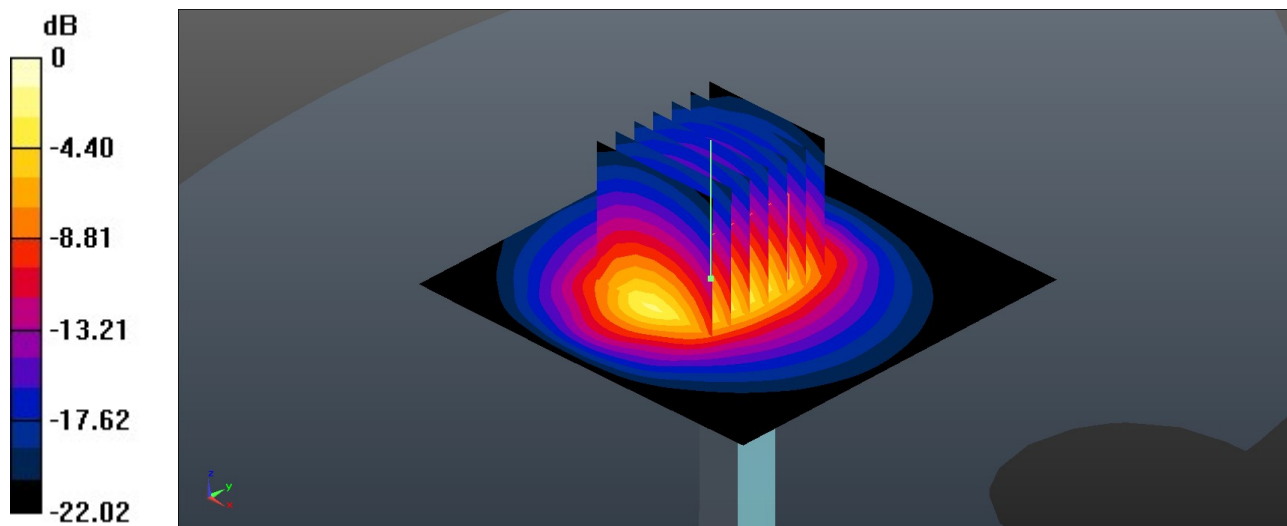
**Pin=50mW/Zoom Scan (7x7x7)/Cube 0:** Measurement grid: dx=5mm, dy=5mm, dz=5mm

Reference Value = 40.28 V/m; Power Drift = 0.05 dB

Peak SAR (extrapolated) = 5.73 W/kg

**SAR(1 g) = 2.72 W/kg; SAR(10 g) = 1.31 W/kg**

Maximum value of SAR (measured) = 3.62 W/kg



0 dB = 3.62 W/kg = 5.59 dBW/kg



## **Appendix B. Plots of High SAR Measurement**

The plots are shown as follows.

### 01\_LTE Band 71\_20M\_QPSK\_1RB\_0Offset\_Right Cheek\_0mm\_Ch133322

Communication System: UID 0, LTE-FDD (0); Frequency: 683 MHz; Duty Cycle: 1:1  
Medium: HSL\_750 Medium parameters used:  $f = 683 \text{ MHz}$ ;  $\sigma = 0.878 \text{ S/m}$ ;  $\epsilon_r = 41.392$ ;  $\rho = 1000 \text{ kg/m}^3$

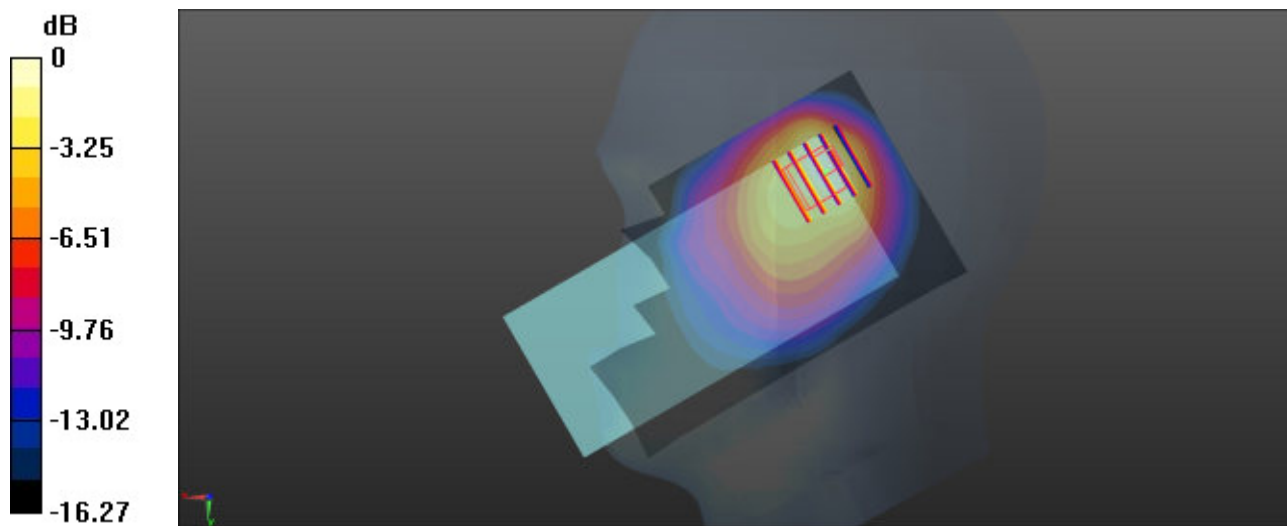
Ambient Temperature : 23.1 °C; Liquid Temperature : 22.6 °C

#### DASY5 Configuration:

- Probe: ES3DV3 - SN3279; ConvF(6.48, 6.48, 6.48); Calibrated: 2021.8.24
- Sensor-Surface: 3mm (Mechanical Surface Detection)
- Electronics: DAE4 Sn1356; Calibrated: 2021.6.1
- Phantom: SAM Twin Phantom; Type: SAM Twin; Serial: TP-1842
- Measurement SW: DASY52, Version 52.10 (4); SEMCAD X Version 14.6.14 (7483)

**Area Scan (71x131x1):** Interpolated grid:  $dx=1.500 \text{ mm}$ ,  $dy=1.500 \text{ mm}$   
Maximum value of SAR (interpolated) = 0.606 W/kg

**Zoom Scan (5x5x7)/Cube 0:** Measurement grid:  $dx=8\text{mm}$ ,  $dy=8\text{mm}$ ,  $dz=5\text{mm}$   
Reference Value = 19.46 V/m; Power Drift = 0.14 dB  
Peak SAR (extrapolated) = 0.900 W/kg  
**SAR(1 g) = 0.370 W/kg; SAR(10 g) = 0.231 W/kg**  
Maximum value of SAR (measured) = 0.611 W/kg



0 dB = 0.611 W/kg = -2.14 dBW/kg

**02\_LTE Band 12\_10M\_QPSK\_25RB\_0Offset\_Right Cheek\_0mm\_Ch23095**

Communication System: UID 0, LTE-FDD (0); Frequency: 707.5 MHz; Duty Cycle: 1:1  
 Medium: HSL\_750 Medium parameters used:  $f = 707.5$  MHz;  $\sigma = 0.886$  S/m;  $\epsilon_r = 41.31$ ;  $\rho = 1000$  kg/m<sup>3</sup>

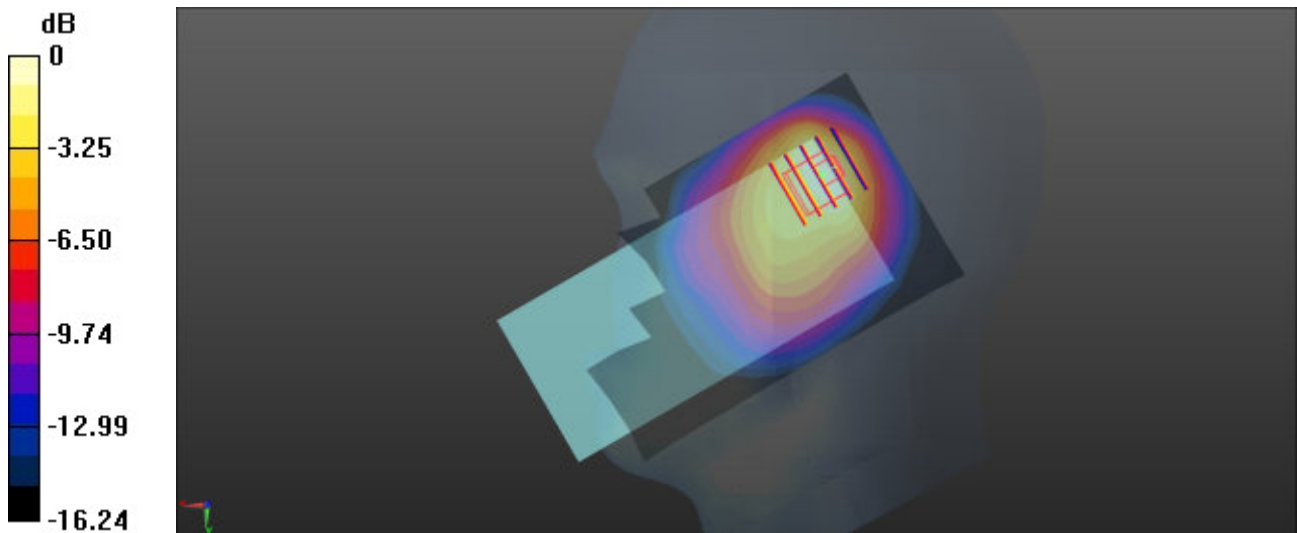
Ambient Temperature : 23.1 °C; Liquid Temperature : 22.6 °C

**DASY5 Configuration:**

- Probe: ES3DV3 - SN3279; ConvF(6.48, 6.48, 6.48); Calibrated: 2021.8.24
- Sensor-Surface: 3mm (Mechanical Surface Detection)
- Electronics: DAE4 Sn1356; Calibrated: 2021.6.1
- Phantom: SAM Twin Phantom; Type: SAM Twin; Serial: TP-1842
- Measurement SW: DASY52, Version 52.10 (4); SEMCAD X Version 14.6.14 (7483)

**Area Scan (71x131x1):** Interpolated grid: dx=1.500 mm, dy=1.500 mm  
 Maximum value of SAR (interpolated) = 0.821 W/kg

**Zoom Scan (5x5x7)/Cube 0:** Measurement grid: dx=8mm, dy=8mm, dz=5mm  
 Reference Value = 23.50 V/m; Power Drift = 0.01 dB  
 Peak SAR (extrapolated) = 1.09 W/kg  
**SAR(1 g) = 0.467 W/kg; SAR(10 g) = 0.280 W/kg**  
 Maximum value of SAR (measured) = 0.790 W/kg



0 dB = 0.790 W/kg = -1.02 dBW/kg

### 03\_LTE Band 13\_10M\_QPSK\_1RB\_0Offset\_Right Cheek\_0mm\_Ch23230

Communication System: UID 0, LTE-FDD (0); Frequency: 782 MHz; Duty Cycle: 1:1  
Medium: HSL\_750 Medium parameters used:  $f = 782$  MHz;  $\sigma = 0.911$  S/m;  $\epsilon_r = 41.109$ ;  $\rho = 1000$  kg/m<sup>3</sup>

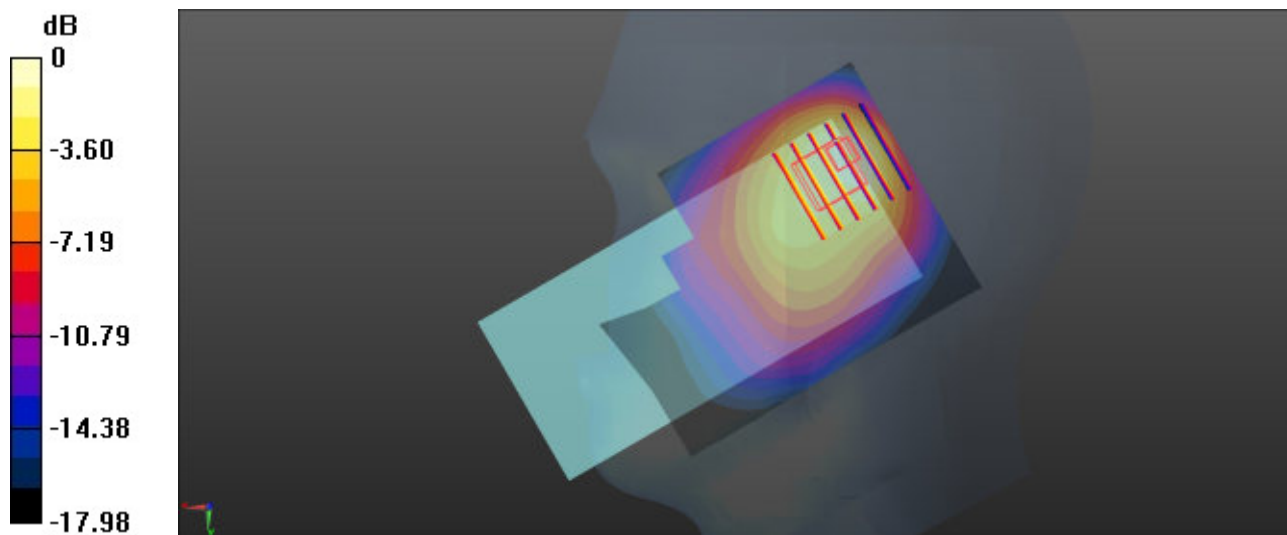
Ambient Temperature : 23.1 °C; Liquid Temperature : 22.6 °C

#### DASY5 Configuration:

- Probe: ES3DV3 - SN3279; ConvF(6.48, 6.48, 6.48); Calibrated: 2021.8.24
- Sensor-Surface: 3mm (Mechanical Surface Detection)
- Electronics: DAE4 Sn1356; Calibrated: 2021.6.1
- Phantom: SAM Twin Phantom; Type: SAM Twin; Serial: TP-1842
- Measurement SW: DASY52, Version 52.10 (4); SEMCAD X Version 14.6.14 (7483)

**Area Scan (71x91x1):** Interpolated grid: dx=1.500 mm, dy=1.500 mm  
Maximum value of SAR (interpolated) = 1.14 W/kg

**Zoom Scan (6x6x7)/Cube 0:** Measurement grid: dx=8mm, dy=8mm, dz=5mm  
Reference Value = 27.58 V/m; Power Drift = 0.04 dB  
Peak SAR (extrapolated) = 1.32 W/kg  
**SAR(1 g) = 0.623 W/kg; SAR(10 g) = 0.402 W/kg**  
Maximum value of SAR (measured) = 1.01 W/kg



0 dB = 1.01 W/kg = 0.04 dBW/kg

### 04\_LTE Band 14\_10M\_QPSK\_1RB\_0Offset\_Right Cheek\_0mm\_Ch23330

Communication System: UID 0, LTE-FDD (0); Frequency: 793 MHz; Duty Cycle: 1:1  
Medium: HSL\_750 Medium parameters used:  $f = 793$  MHz;  $\sigma = 0.915$  S/m;  $\epsilon_r = 41.063$ ;  $\rho = 1000$  kg/m<sup>3</sup>

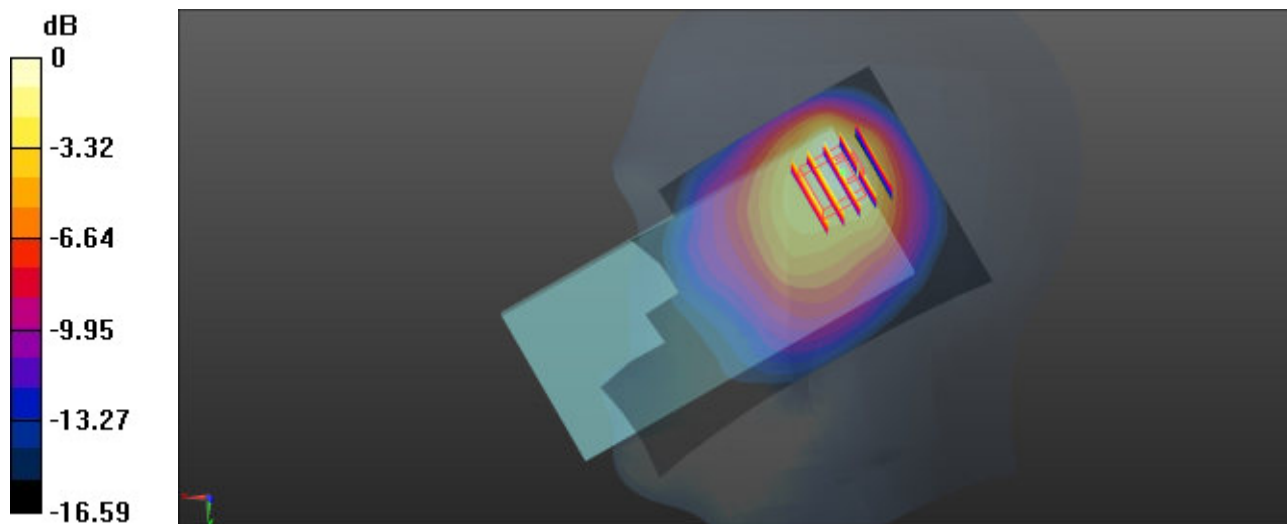
Ambient Temperature : 23.1 °C; Liquid Temperature : 22.6 °C

#### DASY5 Configuration:

- Probe: ES3DV3 - SN3279; ConvF(6.48, 6.48, 6.48); Calibrated: 2021.8.24
- Sensor-Surface: 3mm (Mechanical Surface Detection)
- Electronics: DAE4 Sn1356; Calibrated: 2021.6.1
- Phantom: SAM Twin Phantom; Type: SAM Twin; Serial: TP-1842
- Measurement SW: DASY52, Version 52.10 (4); SEMCAD X Version 14.6.14 (7483)

**Area Scan (71x131x1):** Interpolated grid: dx=1.500 mm, dy=1.500 mm  
Maximum value of SAR (interpolated) = 0.799 W/kg

**Zoom Scan (5x5x7)/Cube 0:** Measurement grid: dx=8mm, dy=8mm, dz=5mm  
Reference Value = 22.88 V/m; Power Drift = -0.09 dB  
Peak SAR (extrapolated) = 1.04 W/kg  
**SAR(1 g) = 0.466 W/kg; SAR(10 g) = 0.309 W/kg**  
Maximum value of SAR (measured) = 0.770 W/kg



0 dB = 0.770 W/kg = -1.14 dBW/kg

**05\_FR1 n71\_20M\_QPSK\_1RB\_1Offset\_Right Cheek\_0mm\_Ch136100**

Communication System: UID 0, 5G NR (0); Frequency: 680.5 MHz; Duty Cycle: 1:1  
Medium: HSL\_750 Medium parameters used:  $f = 680.5$  MHz;  $\sigma = 0.876$  S/m;  $\epsilon_r = 41.404$ ;  $\rho = 1000$  kg/m<sup>3</sup>

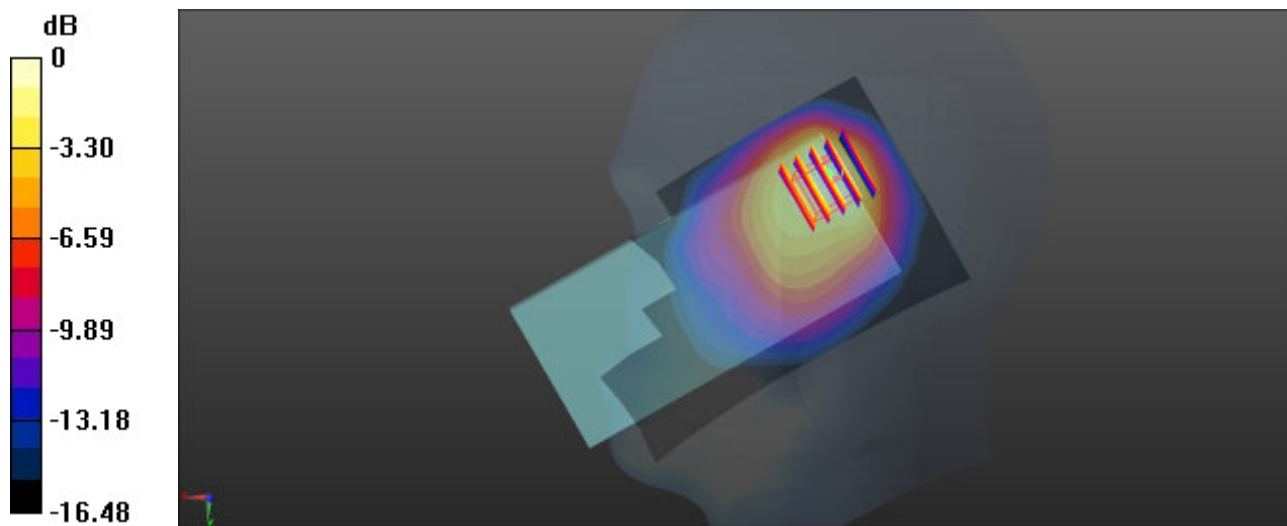
Ambient Temperature : 23.1 °C; Liquid Temperature : 22.6 °C

**DASY5 Configuration:**

- Probe: ES3DV3 - SN3279; ConvF(6.48, 6.48, 6.48); Calibrated: 2021.8.24
- Sensor-Surface: 3mm (Mechanical Surface Detection)
- Electronics: DAE4 Sn1356; Calibrated: 2021.6.1
- Phantom: SAM Twin Phantom; Type: SAM Twin; Serial: TP-1842
- Measurement SW: DASY52, Version 52.10 (4); SEMCAD X Version 14.6.14 (7483)

**Area Scan (71x131x1):** Interpolated grid: dx=1.500 mm, dy=1.500 mm  
Maximum value of SAR (interpolated) = 0.626 W/kg

**Zoom Scan (5x5x7)/Cube 0:** Measurement grid: dx=8mm, dy=8mm, dz=5mm  
Reference Value = 20.93 V/m; Power Drift = 0.08 dB  
Peak SAR (extrapolated) = 0.788 W/kg  
**SAR(1 g) = 0.327 W/kg; SAR(10 g) = 0.204 W/kg**  
Maximum value of SAR (measured) = 0.499 W/kg



0 dB = 0.499 W/kg = -3.02 dBW/kg

**06\_FR1 n12\_15M\_QPSK\_36RB\_22Offset\_Right Cheek\_0mm\_Ch141500**

Communication System: UID 0, 5G NR (0); Frequency: 707.5 MHz; Duty Cycle: 1:1  
Medium: HSL\_750 Medium parameters used:  $f = 707.5$  MHz;  $\sigma = 0.886$  S/m;  $\epsilon_r = 41.31$ ;  $\rho = 1000$  kg/m<sup>3</sup>

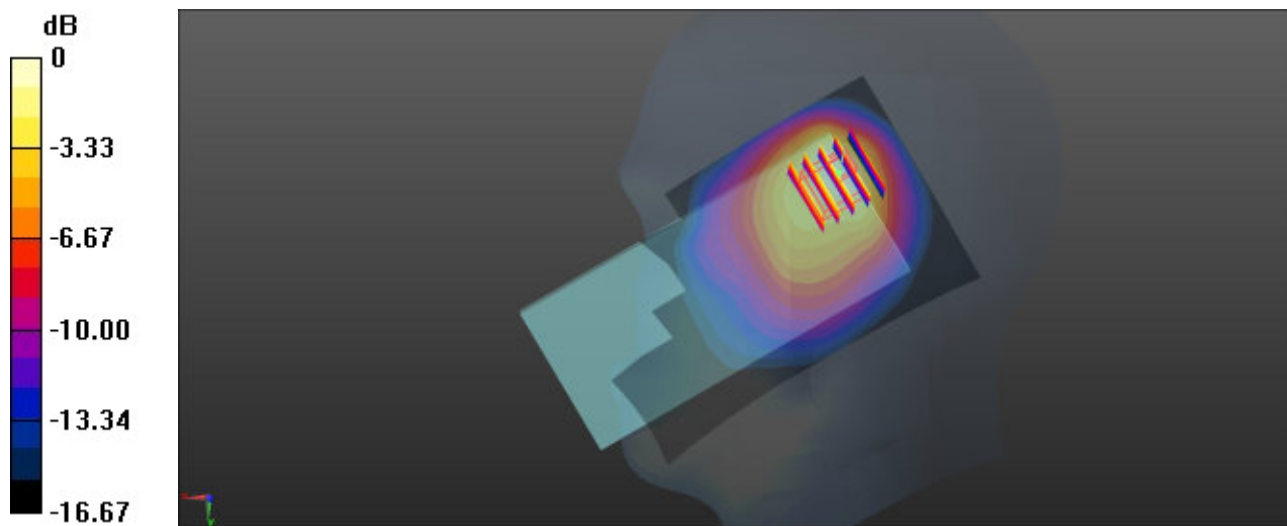
Ambient Temperature : 23.1 °C; Liquid Temperature : 22.6 °C

**DASY5 Configuration:**

- Probe: ES3DV3 - SN3279; ConvF(6.48, 6.48, 6.48); Calibrated: 2021.8.24
- Sensor-Surface: 3mm (Mechanical Surface Detection)
- Electronics: DAE4 Sn1356; Calibrated: 2021.6.1
- Phantom: SAM Twin Phantom; Type: SAM Twin; Serial: TP-1842
- Measurement SW: DASY52, Version 52.10 (4); SEMCAD X Version 14.6.14 (7483)

**Area Scan (71x131x1):** Interpolated grid: dx=1.500 mm, dy=1.500 mm  
Maximum value of SAR (interpolated) = 0.748 W/kg

**Zoom Scan (5x5x7)/Cube 0:** Measurement grid: dx=8mm, dy=8mm, dz=5mm  
Reference Value = 22.84 V/m; Power Drift = -0.03 dB  
Peak SAR (extrapolated) = 1.06 W/kg  
**SAR(1 g) = 0.426 W/kg; SAR(10 g) = 0.264 W/kg**  
Maximum value of SAR (measured) = 0.694 W/kg



0 dB = 0.694 W/kg = -1.59 dBW/kg

**07\_FR1 n14\_10M\_QPSK\_1RB\_1Offset\_Right Cheek\_0mm\_Ch158600**

Communication System: UID 0, 5G NR (0); Frequency: 793 MHz; Duty Cycle: 1:1  
Medium: HSL\_750 Medium parameters used:  $f = 793$  MHz;  $\sigma = 0.915$  S/m;  $\epsilon_r = 41.063$ ;  $\rho = 1000$  kg/m<sup>3</sup>

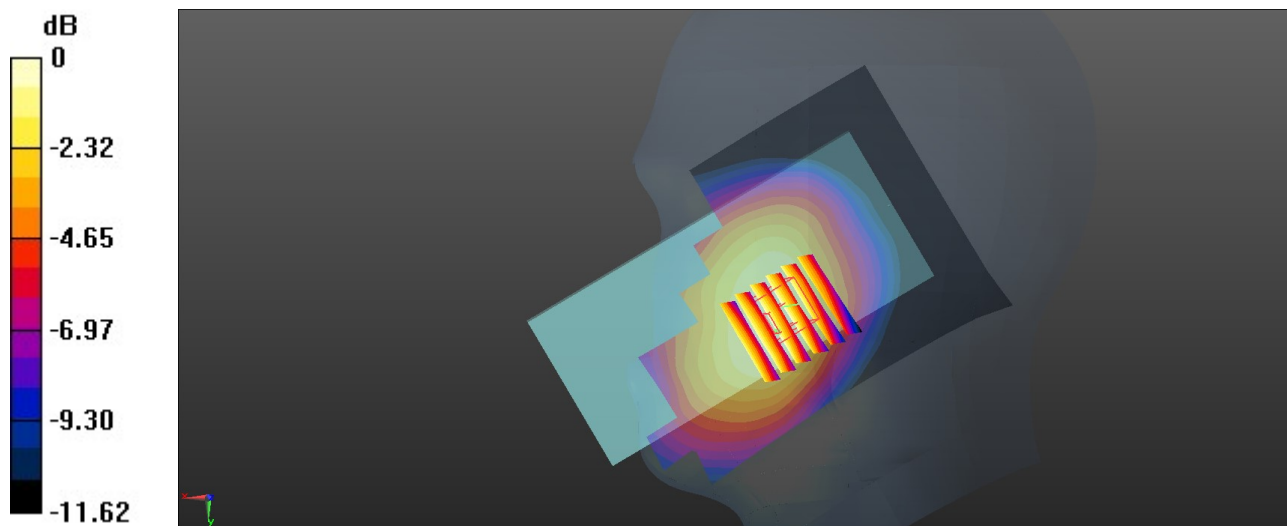
Ambient Temperature : 23.1 °C; Liquid Temperature : 22.6 °C

**DASY5 Configuration:**

- Probe: ES3DV3 - SN3279; ConvF(6.48, 6.48, 6.48); Calibrated: 2021.8.24
- Sensor-Surface: 3mm (Mechanical Surface Detection)
- Electronics: DAE4 Sn1356; Calibrated: 2021.6.1
- Phantom: SAM Twin Phantom; Type: SAM Twin; Serial: TP-1842
- Measurement SW: DASY52, Version 52.10 (4); SEMCAD X Version 14.6.14 (7483)

**Area Scan (81x121x1):** Interpolated grid: dx=1.500 mm, dy=1.500 mm  
Maximum value of SAR (interpolated) = 0.296 W/kg

**Zoom Scan (6x6x7)/Cube 0:** Measurement grid: dx=8mm, dy=8mm, dz=5mm  
Reference Value = 5.684 V/m; Power Drift = -0.07 dB  
Peak SAR (extrapolated) = 0.313 W/kg  
**SAR(1 g) = 0.241 W/kg; SAR(10 g) = 0.185 W/kg**  
Maximum value of SAR (measured) = 0.285 W/kg



0 dB = 0.285 W/kg = -5.45 dBW/kg

**08\_GSM 850\_GPRS (3 Tx slots)\_Right Cheek\_0mm\_Ch189**

Communication System: UID 0, GSM850 (0); Frequency: 836.4 MHz; Duty Cycle: 1:2.77  
 Medium: HSL\_835 Medium parameters used:  $f = 836.4$  MHz;  $\sigma = 0.93$  S/m;  $\epsilon_r = 40.933$ ;  $\rho = 1000$  kg/m<sup>3</sup>

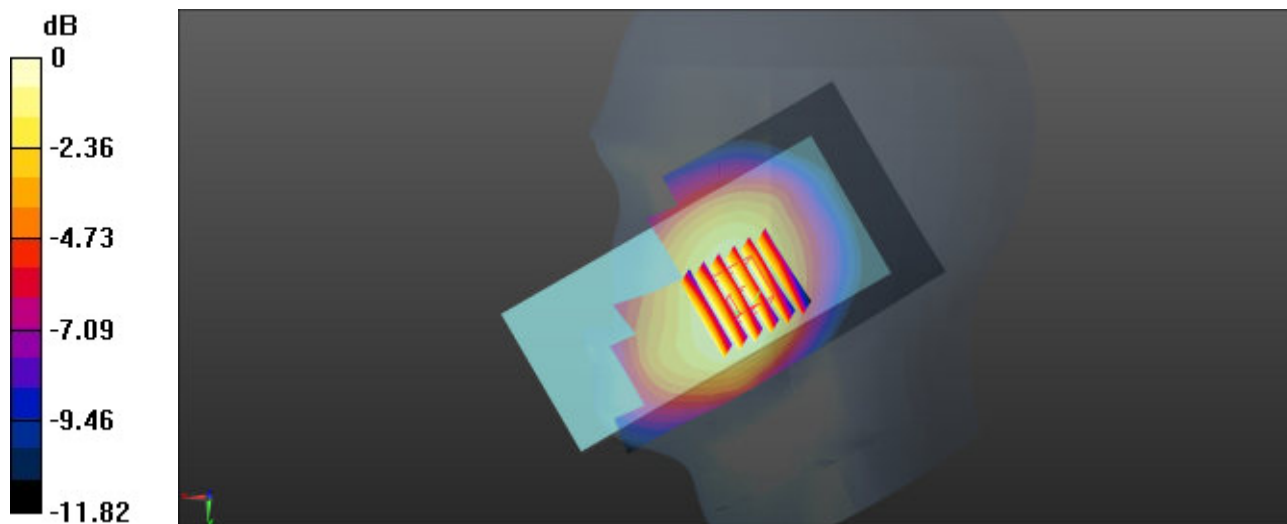
Ambient Temperature : 23.3 °C; Liquid Temperature : 22.8 °C

**DASY5 Configuration:**

- Probe: ES3DV3 - SN3279; ConvF(6.23, 6.23, 6.23); Calibrated: 2021.8.24
- Sensor-Surface: 3mm (Mechanical Surface Detection)
- Electronics: DAE4 Sn1356; Calibrated: 2021.6.1
- Phantom: SAM Twin Phantom; Type: SAM Twin; Serial: TP-1842
- Measurement SW: DASY52, Version 52.10 (4); SEMCAD X Version 14.6.14 (7483)

**Area Scan (71x121x1):** Interpolated grid: dx=1.500 mm, dy=1.500 mm  
 Maximum value of SAR (interpolated) = 0.512 W/kg

**Zoom Scan (6x6x7)/Cube 0:** Measurement grid: dx=8mm, dy=8mm, dz=5mm  
 Reference Value = 7.715 V/m; Power Drift = -0.04 dB  
 Peak SAR (extrapolated) = 0.554 W/kg  
**SAR(1 g) = 0.420 W/kg; SAR(10 g) = 0.318 W/kg**  
 Maximum value of SAR (measured) = 0.499 W/kg



0 dB = 0.499 W/kg = -3.02 dBW/kg

### 09\_WCDMA V\_RMC 12.2Kbps\_Right Cheek\_0mm\_Ch4182

Communication System: UID 0, WCDMA (0); Frequency: 836.4 MHz; Duty Cycle: 1:1  
Medium: HSL\_835 Medium parameters used:  $f = 836.4$  MHz;  $\sigma = 0.93$  S/m;  $\epsilon_r = 40.933$ ;  $\rho = 1000$  kg/m<sup>3</sup>

Ambient Temperature : 23.3 °C; Liquid Temperature : 22.8 °C

#### DASY5 Configuration:

- Probe: ES3DV3 - SN3279; ConvF(6.23, 6.23, 6.23); Calibrated: 2021.8.24
- Sensor-Surface: 3mm (Mechanical Surface Detection)
- Electronics: DAE4 Sn1356; Calibrated: 2021.6.1
- Phantom: SAM Twin Phantom; Type: SAM Twin; Serial: TP-1842
- Measurement SW: DASY52, Version 52.10 (4); SEMCAD X Version 14.6.14 (7483)

**Area Scan (71x91x1):** Interpolated grid: dx=1.500 mm, dy=1.500 mm

Maximum value of SAR (interpolated) = 0.581 W/kg

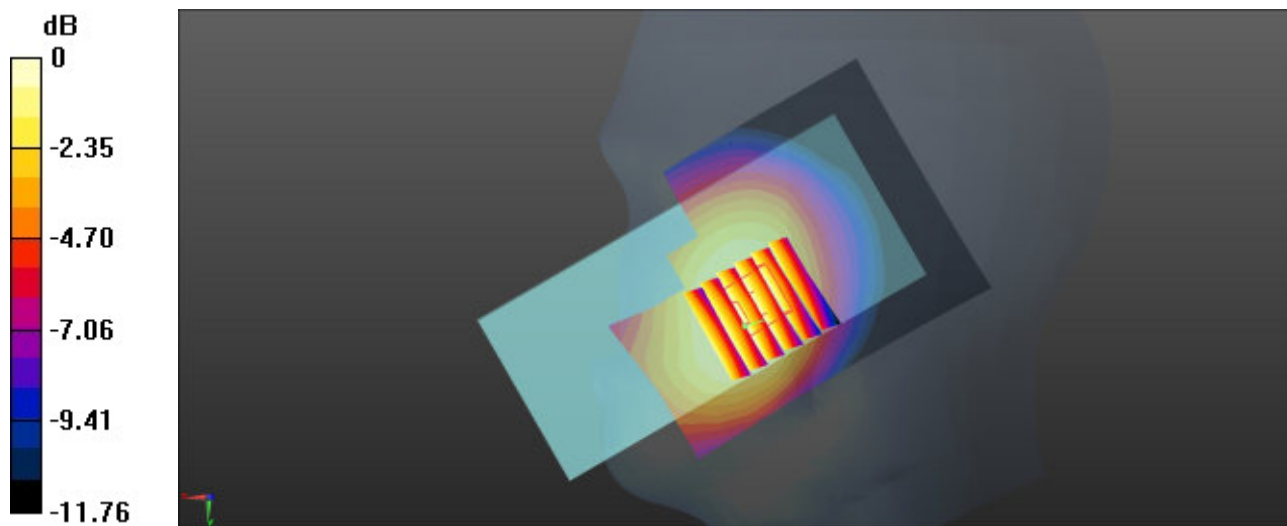
**Zoom Scan (6x6x7)/Cube 0:** Measurement grid: dx=8mm, dy=8mm, dz=5mm

Reference Value = 25.99 V/m; Power Drift = -0.03 dB

Peak SAR (extrapolated) = 0.613 W/kg

**SAR(1 g) = 0.477 W/kg; SAR(10 g) = 0.370 W/kg**

Maximum value of SAR (measured) = 0.566 W/kg



0 dB = 0.566 W/kg = -2.47 dBW/kg

### 10\_LTE Band 26\_15M\_QPSK\_1RB\_0Offset\_Right Cheek\_0mm\_Ch26865

Communication System: UID 0, LTE-FDD (0); Frequency: 831.5 MHz; Duty Cycle: 1:1  
Medium: HSL\_835 Medium parameters used:  $f = 831.5$  MHz;  $\sigma = 0.927$  S/m;  $\epsilon_r = 40.947$ ;  $\rho = 1000$  kg/m<sup>3</sup>

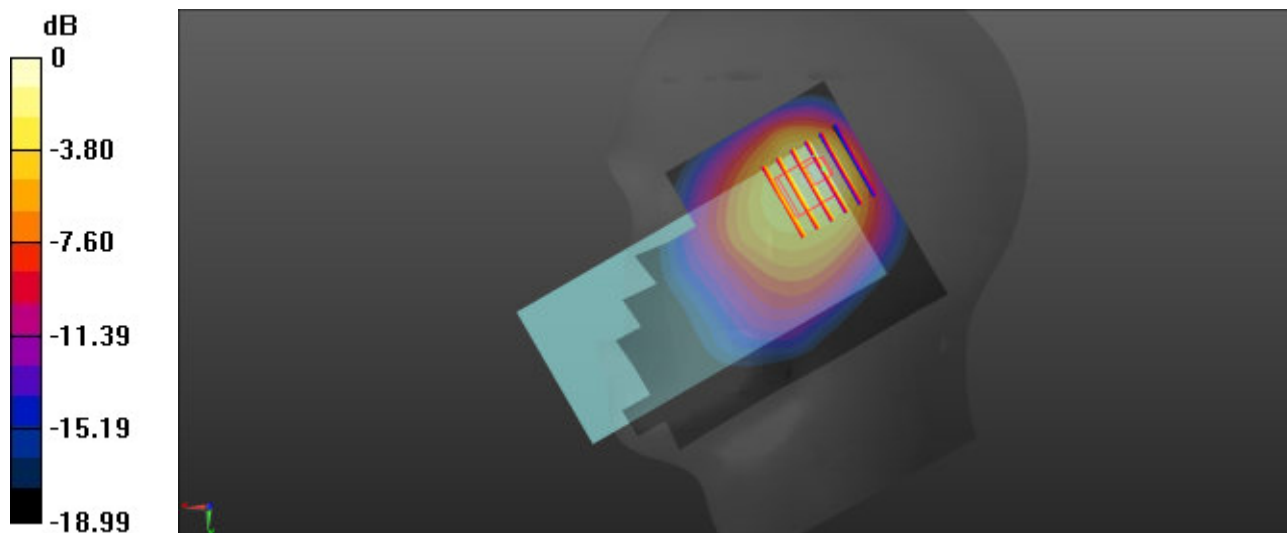
Ambient Temperature : 23.3 °C; Liquid Temperature : 22.8 °C

#### DASY5 Configuration:

- Probe: ES3DV3 - SN3279; ConvF(6.23, 6.23, 6.23); Calibrated: 2021.8.24
- Sensor-Surface: 3mm (Mechanical Surface Detection)
- Electronics: DAE4 Sn1356; Calibrated: 2021.6.1
- Phantom: SAM Twin Phantom; Type: SAM Twin; Serial: TP-1842
- Measurement SW: DASY52, Version 52.10 (4); SEMCAD X Version 14.6.14 (7483)

**Area Scan (81x121x1):** Interpolated grid: dx=1.500 mm, dy=1.500 mm  
Maximum value of SAR (interpolated) = 1.30 W/kg

**Zoom Scan (6x6x7)/Cube 0:** Measurement grid: dx=8mm, dy=8mm, dz=5mm  
Reference Value = 26.93 V/m; Power Drift = 0.01 dB  
Peak SAR (extrapolated) = 1.84 W/kg  
**SAR(1 g) = 0.867 W/kg; SAR(10 g) = 0.568 W/kg**  
Maximum value of SAR (measured) = 1.38 W/kg



0 dB = 1.38 W/kg = 1.40 dBW/kg

**11\_FR1 n26\_20M\_QPSK\_1RB\_1Offset\_Right Cheek\_0mm\_Ch166300**

Communication System: UID 0, 5G NR (0); Frequency: 831.5 MHz; Duty Cycle: 1:1  
 Medium: HSL\_835 Medium parameters used:  $f = 831.5$  MHz;  $\sigma = 0.937$  S/m;  $\epsilon_r = 42.458$ ;  $\rho = 1000$  kg/m<sup>3</sup>

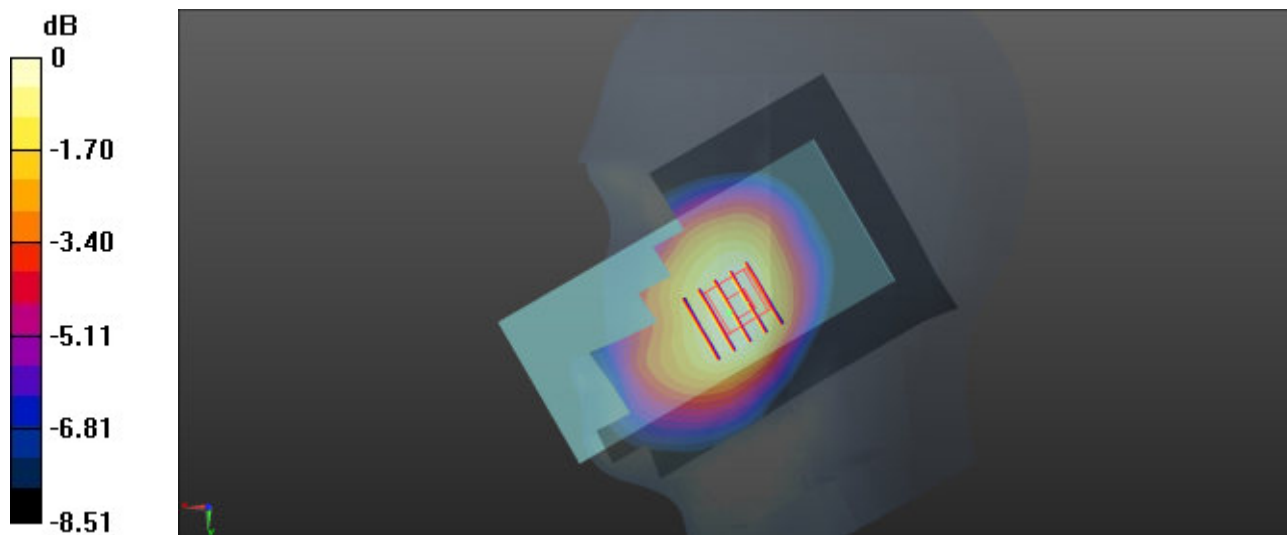
Ambient Temperature : 23.3 °C; Liquid Temperature : 22.8 °C

**DASY5 Configuration:**

- Probe: ES3DV3 - SN3279; ConvF(6.23, 6.23, 6.23); Calibrated: 2021.8.24
- Sensor-Surface: 3mm (Mechanical Surface Detection)
- Electronics: DAE4 Sn1356; Calibrated: 2021.6.1
- Phantom: SAM Twin Phantom; Type: SAM Twin; Serial: TP-1842
- Measurement SW: DASY52, Version 52.10 (4); SEMCAD X Version 14.6.14 (7483)

**Area Scan (81x121x1):** Interpolated grid: dx=1.500 mm, dy=1.500 mm  
 Maximum value of SAR (interpolated) = 0.259 W/kg

**Zoom Scan (5x5x7)/Cube 0:** Measurement grid: dx=8mm, dy=8mm, dz=5mm  
 Reference Value = 5.515 V/m; Power Drift = 0.16 dB  
 Peak SAR (extrapolated) = 0.280 W/kg  
**SAR(1 g) = 0.218 W/kg; SAR(10 g) = 0.168 W/kg**  
 Maximum value of SAR (measured) = 0.258 W/kg



0 dB = 0.258 W/kg = -5.88 dBW/kg

**12\_FR1 n5\_25M\_QPSK\_64RB\_32Offset\_Right Cheek\_0mm\_Ch167300**

Communication System: UID 0, 5G NR (0); Frequency: 836.5 MHz; Duty Cycle: 1:1  
 Medium: HSL\_835 Medium parameters used:  $f = 836.5$  MHz;  $\sigma = 0.93$  S/m;  $\epsilon_r = 40.933$ ;  $\rho = 1000$  kg/m<sup>3</sup>

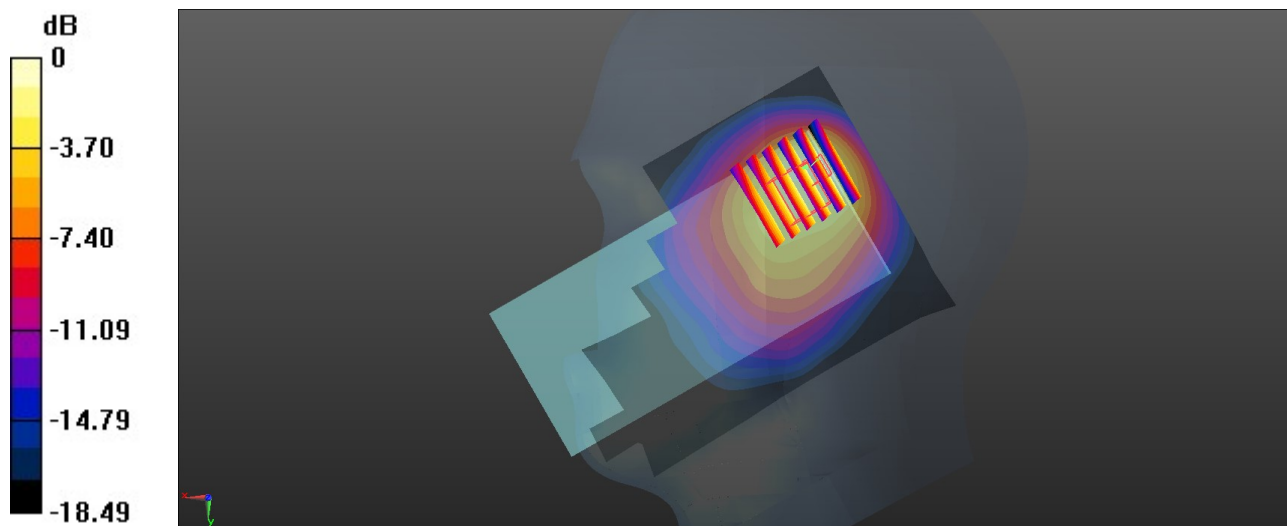
Ambient Temperature : 23.3 °C; Liquid Temperature : 22.8 °C

**DASY5 Configuration:**

- Probe: ES3DV3 - SN3279; ConvF(6.23, 6.23, 6.23); Calibrated: 2021.8.24
- Sensor-Surface: 3mm (Mechanical Surface Detection)
- Electronics: DAE4 Sn1356; Calibrated: 2021.6.1
- Phantom: SAM Twin Phantom; Type: SAM Twin; Serial: TP-1842
- Measurement SW: DASY52, Version 52.10 (4); SEMCAD X Version 14.6.14 (7483)

**Area Scan (81x121x1):** Interpolated grid: dx=1.500 mm, dy=1.500 mm  
 Maximum value of SAR (interpolated) = 0.639 W/kg

**Zoom Scan (6x6x7)/Cube 0:** Measurement grid: dx=8mm, dy=8mm, dz=5mm  
 Reference Value = 22.99 V/m; Power Drift = -0.03 dB  
 Peak SAR (extrapolated) = 0.996 W/kg  
**SAR(1 g) = 0.425 W/kg; SAR(10 g) = 0.273 W/kg**  
 Maximum value of SAR (measured) = 0.728 W/kg



0 dB = 0.728 W/kg = -1.38 dBW/kg

### 13\_WCDMA IV RMC 12.2Kbps\_Right Cheek\_0mm\_Ch1413

Communication System: UID 0, WCDMA (0); Frequency: 1732.6 MHz; Duty Cycle: 1:1  
Medium: HSL\_1750 Medium parameters used:  $f = 1732.6$  MHz;  $\sigma = 1.366$  S/m;  $\epsilon_r = 39.92$ ;  $\rho = 1000$  kg/m<sup>3</sup>

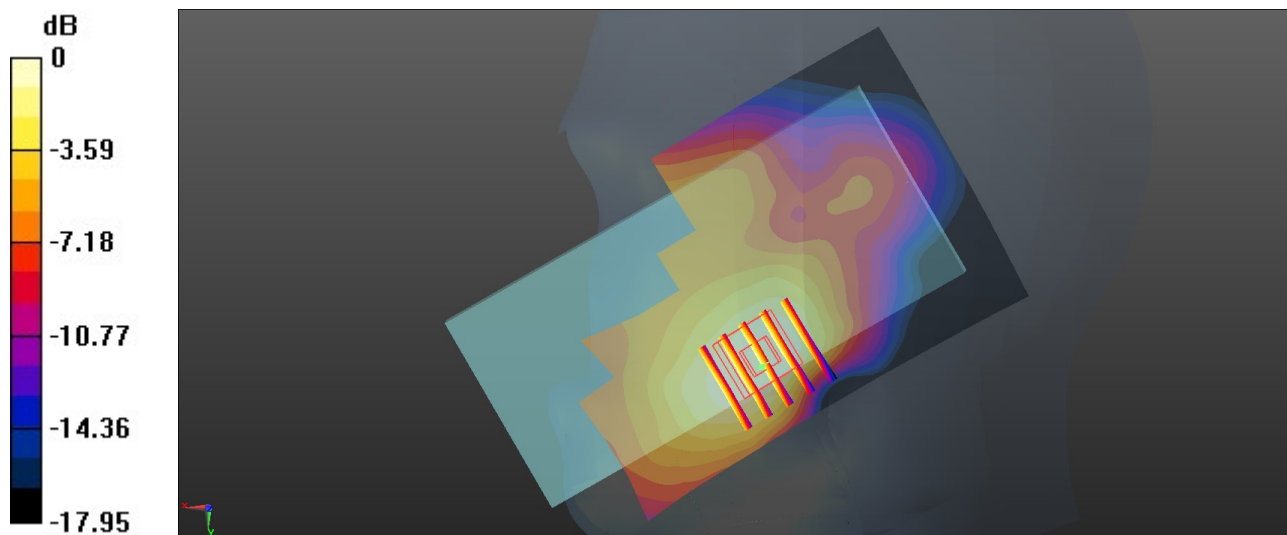
Ambient Temperature : 23.1 °C; Liquid Temperature : 22.8 °C

#### DASY5 Configuration:

- Probe: ES3DV3 - SN3279; ConvF(5.52, 5.52, 5.52); Calibrated: 2021.8.24
- Sensor-Surface: 3mm (Mechanical Surface Detection)
- Electronics: DAE4 Sn1356; Calibrated: 2021.6.1
- Phantom: SAM Twin Phantom; Type: SAM Twin; Serial: TP-1842
- Measurement SW: DASY52, Version 52.10 (4); SEMCAD X Version 14.6.14 (7483)

**Area Scan (71x101x1):** Interpolated grid: dx=1.500 mm, dy=1.500 mm  
Maximum value of SAR (interpolated) = 0.200 W/kg

**Zoom Scan (5x5x7)/Cube 0:** Measurement grid: dx=8mm, dy=8mm, dz=5mm  
Reference Value = 12.35 V/m; Power Drift = -0.06 dB  
Peak SAR (extrapolated) = 0.211 W/kg  
**SAR(1 g) = 0.139 W/kg; SAR(10 g) = 0.089 W/kg**  
Maximum value of SAR (measured) = 0.182 W/kg



0 dB = 0.182 W/kg = -7.40 dBW/kg

### 14\_LTE Band 66\_20M\_QPSK\_1RB\_0Offset\_Right Tilted\_0mm\_Ch132572

Communication System: UID 0, LTE-FDD (0); Frequency: 1770 MHz; Duty Cycle: 1:1  
Medium: HSL\_1750 Medium parameters used:  $f = 1770$  MHz;  $\sigma = 1.386$  S/m;  $\epsilon_r = 39.818$ ;  $\rho = 1000$  kg/m<sup>3</sup>

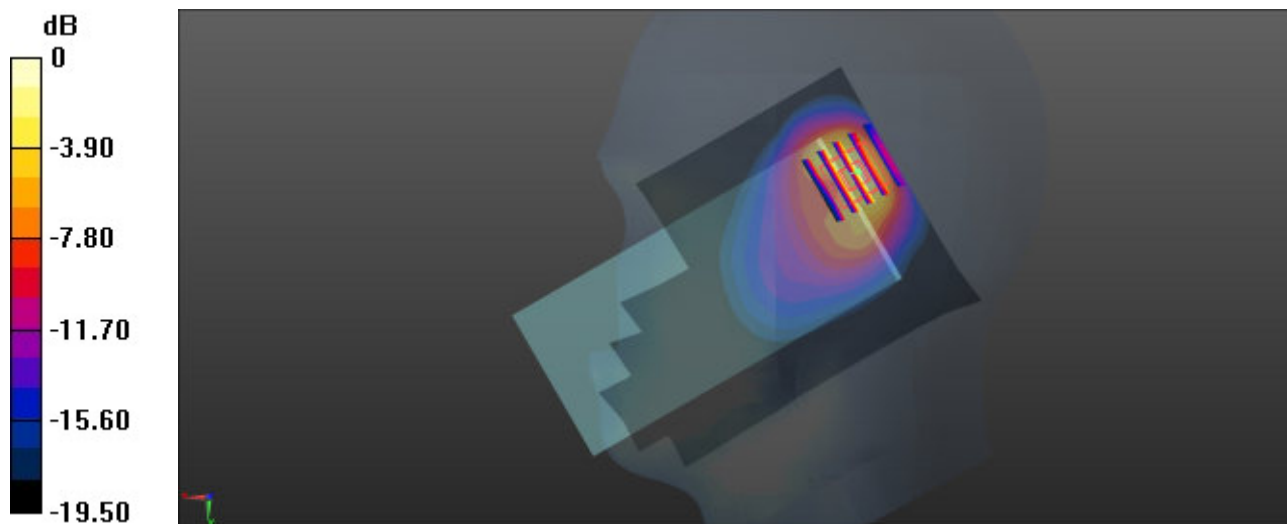
Ambient Temperature : 23.1 °C; Liquid Temperature : 22.8 °C

#### DASY5 Configuration:

- Probe: ES3DV3 - SN3279; ConvF(5.52, 5.52, 5.52); Calibrated: 2021.8.24
- Sensor-Surface: 3mm (Mechanical Surface Detection)
- Electronics: DAE4 Sn1356; Calibrated: 2021.6.1
- Phantom: SAM Twin Phantom; Type: SAM Twin; Serial: TP-1842
- Measurement SW: DASY52, Version 52.10 (4); SEMCAD X Version 14.6.14 (7483)

**Area Scan (81x131x1):** Interpolated grid: dx=1.500 mm, dy=1.500 mm  
Maximum value of SAR (interpolated) = 1.29 W/kg

**Zoom Scan (5x5x7)/Cube 0:** Measurement grid: dx=8mm, dy=8mm, dz=5mm  
Reference Value = 16.73 V/m; Power Drift = 0.06 dB  
Peak SAR (extrapolated) = 1.92 W/kg  
**SAR(1 g) = 0.953 W/kg; SAR(10 g) = 0.441 W/kg**  
Maximum value of SAR (measured) = 1.49 W/kg



0 dB = 1.49 W/kg = 1.73 dBW/kg

**15\_FR1 n70\_15M\_QPSK\_1RB\_1Offset\_Right Cheek\_0mm\_Ch340500**

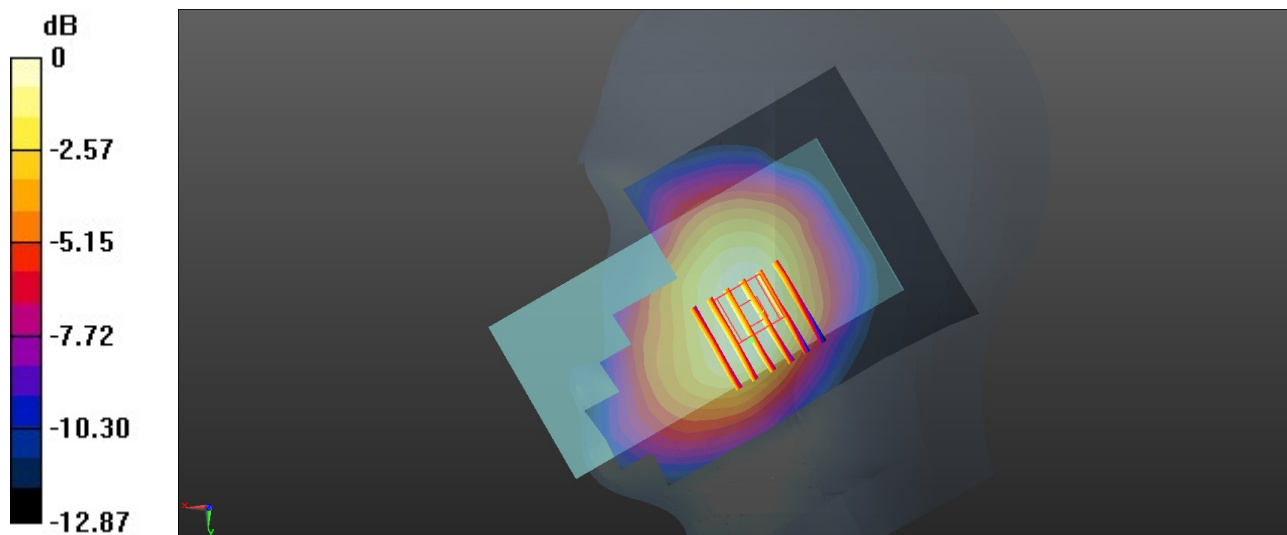
Communication System: UID 0, 5G NR (0); Frequency: 1702.5 MHz; Duty Cycle: 1:1  
Medium: HSL\_1750 Medium parameters used:  $f = 1702.5$  MHz;  $\sigma = 1.384$  S/m;  $\epsilon_r = 40.792$ ;  $\rho = 1000$  kg/m<sup>3</sup>  
Ambient Temperature : 23.1 °C; Liquid Temperature : 22.8 °C

**DASY5 Configuration:**

- Probe: ES3DV3 - SN3279; ConvF(5.52, 5.52, 5.52); Calibrated: 2021.8.24
- Sensor-Surface: 3mm (Mechanical Surface Detection)
- Electronics: DAE4 Sn1356; Calibrated: 2021.6.1
- Phantom: SAM Twin Phantom; Type: SAM Twin; Serial: TP-1842
- Measurement SW: DASY52, Version 52.10 (4); SEMCAD X Version 14.6.14 (7483)

**Area Scan (81x121x1):** Interpolated grid: dx=1.500 mm, dy=1.500 mm  
Maximum value of SAR (interpolated) = 0.197 W/kg

**Zoom Scan (6x6x7)/Cube 0:** Measurement grid: dx=8mm, dy=8mm, dz=5mm  
Reference Value = 8.09 V/m; Power Drift = -0.17 dB  
Peak SAR (extrapolated) = 0.216 W/kg  
**SAR(1 g) = 0.157 W/kg; SAR(10 g) = 0.121 W/kg**  
Maximum value of SAR (measured) = 0.190 W/kg



0 dB = 0.190 W/kg = -7.14 dBW/kg

### 16\_FR1 n66\_40M\_QPSK\_108RB\_54Offset\_Right Tilted\_0mm\_Ch349000

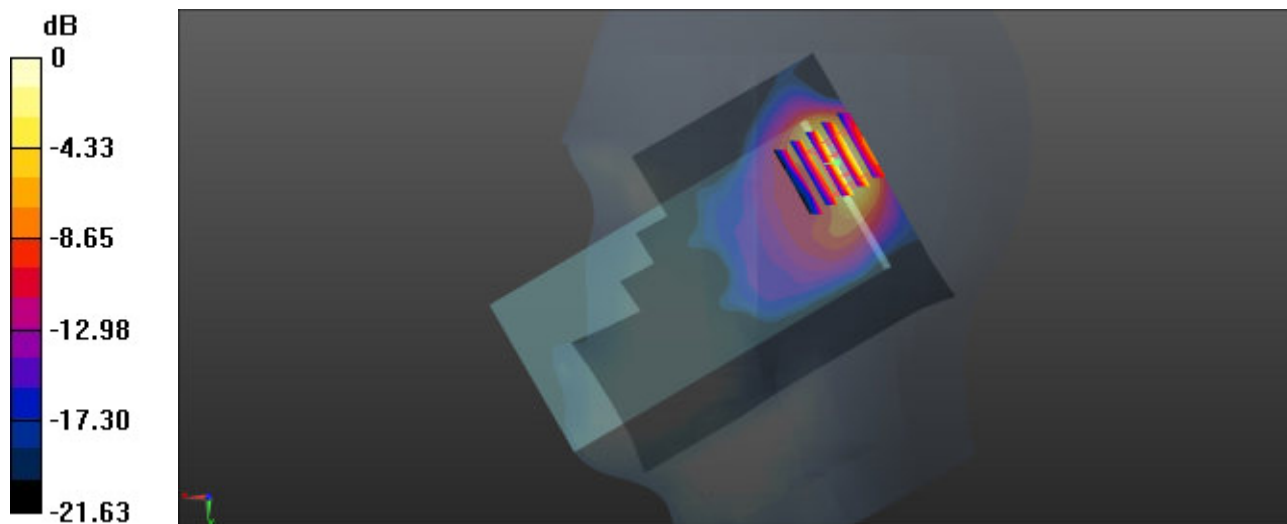
Communication System: UID 0, 5G NR (0); Frequency: 1745 MHz; Duty Cycle: 1:1  
Medium: HSL\_1750 Medium parameters used:  $f = 1745$  MHz;  $\sigma = 1.371$  S/m;  $\epsilon_r = 39.894$ ;  $\rho = 1000$  kg/m<sup>3</sup>  
Ambient Temperature : 23.1 °C; Liquid Temperature : 22.8 °C

#### DASY5 Configuration:

- Probe: ES3DV3 - SN3279; ConvF(5.52, 5.52, 5.52); Calibrated: 2021.8.24
- Sensor-Surface: 3mm (Mechanical Surface Detection)
- Electronics: DAE4 Sn1356; Calibrated: 2021.6.1
- Phantom: SAM Twin Phantom; Type: SAM Twin; Serial: TP-1842
- Measurement SW: DASY52, Version 52.10 (4); SEMCAD X Version 14.6.14 (7483)

**Area Scan (81x101x1):** Interpolated grid: dx=1.500 mm, dy=1.500 mm  
Maximum value of SAR (interpolated) = 0.624 W/kg

**Zoom Scan (5x5x7)/Cube 0:** Measurement grid: dx=8mm, dy=8mm, dz=5mm  
Reference Value = 10.64 V/m; Power Drift = -0.13 dB  
Peak SAR (extrapolated) = 0.766 W/kg  
**SAR(1 g) = 0.360 W/kg; SAR(10 g) = 0.161 W/kg**  
Maximum value of SAR (measured) = 0.602 W/kg



0 dB = 0.602 W/kg = -2.20 dBW/kg

### 17\_GSM1900\_GPRS (4 Tx slots)\_Left Cheek\_0mm\_Ch661

Communication System: UID 0, PCS (0); Frequency: 1880 MHz; Duty Cycle: 1:2.08

Medium: HSL\_1900 Medium parameters used:  $f = 1880$  MHz;  $\sigma = 1.443$  S/m;  $\epsilon_r = 39.682$ ;  $\rho = 1000$  kg/m<sup>3</sup>

Ambient Temperature : 23.4 °C; Liquid Temperature : 22.6 °C

#### DASY5 Configuration:

- Probe: ES3DV3 - SN3279; ConvF(5.28, 5.28, 5.28); Calibrated: 2021.8.24
- Sensor-Surface: 3mm (Mechanical Surface Detection)
- Electronics: DAE4 Sn1356; Calibrated: 2021.6.1
- Phantom: SAM Twin Phantom; Type: SAM Twin; Serial: TP-1842
- Measurement SW: DASY52, Version 52.10 (4); SEMCAD X Version 14.6.14 (7483)

**Area Scan (71x111x1):** Interpolated grid: dx=1.500 mm, dy=1.500 mm

Maximum value of SAR (interpolated) = 0.273 W/kg

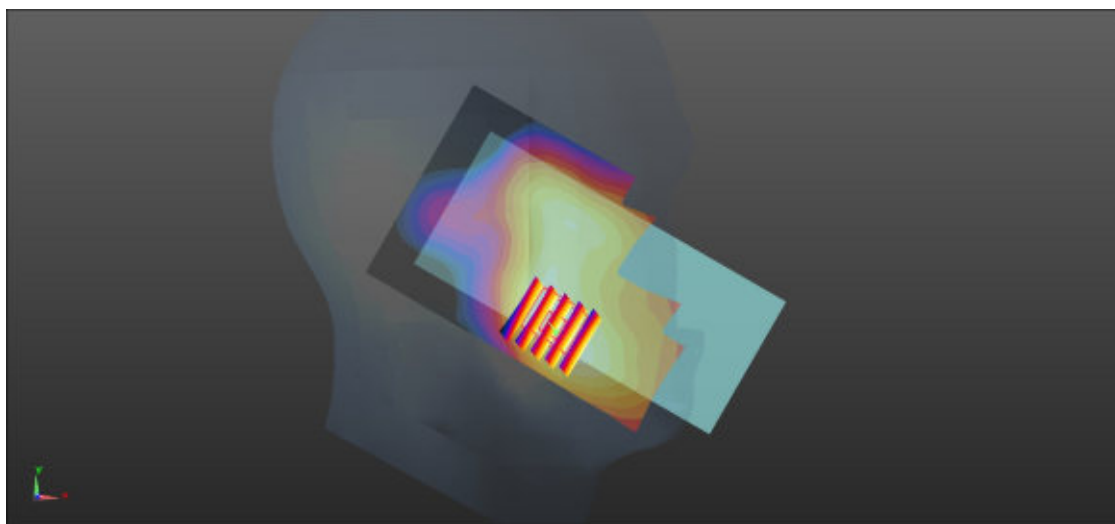
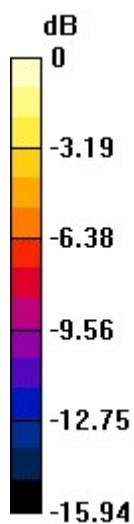
**Zoom Scan (5x5x7)/Cube 0:** Measurement grid: dx=8mm, dy=8mm, dz=5mm

Reference Value = 13.75 V/m; Power Drift = -0.03 dB

Peak SAR (extrapolated) = 0.303 W/kg

**SAR(1 g) = 0.193 W/kg; SAR(10 g) = 0.126 W/kg**

Maximum value of SAR (measured) = 0.261 W/kg



0 dB = 0.261 W/kg = -5.83 dBW/kg

### 18\_WCDMA II Ant 0\_RMC 12.2Kbps\_Left Cheek\_0mm\_Ch9400

Communication System: UID 0, WCDMA (0); Frequency: 1880 MHz; Duty Cycle: 1:1  
Medium: HSL\_1900 Medium parameters used:  $f = 1880$  MHz;  $\sigma = 1.443$  S/m;  $\epsilon_r = 39.682$ ;  $\rho = 1000$  kg/m<sup>3</sup>

Ambient Temperature : 23.4 °C; Liquid Temperature : 22.6 °C

#### DASY5 Configuration:

- Probe: ES3DV3 - SN3279; ConvF(5.28, 5.28, 5.28); Calibrated: 2021.8.24
- Sensor-Surface: 3mm (Mechanical Surface Detection)
- Electronics: DAE4 Sn1356; Calibrated: 2021.6.1
- Phantom: SAM Twin Phantom; Type: SAM Twin; Serial: TP-1842
- Measurement SW: DASY52, Version 52.10 (4); SEMCAD X Version 14.6.14 (7483)

**Area Scan (71x91x1):** Interpolated grid: dx=1.500 mm, dy=1.500 mm

Maximum value of SAR (interpolated) = 0.540 W/kg

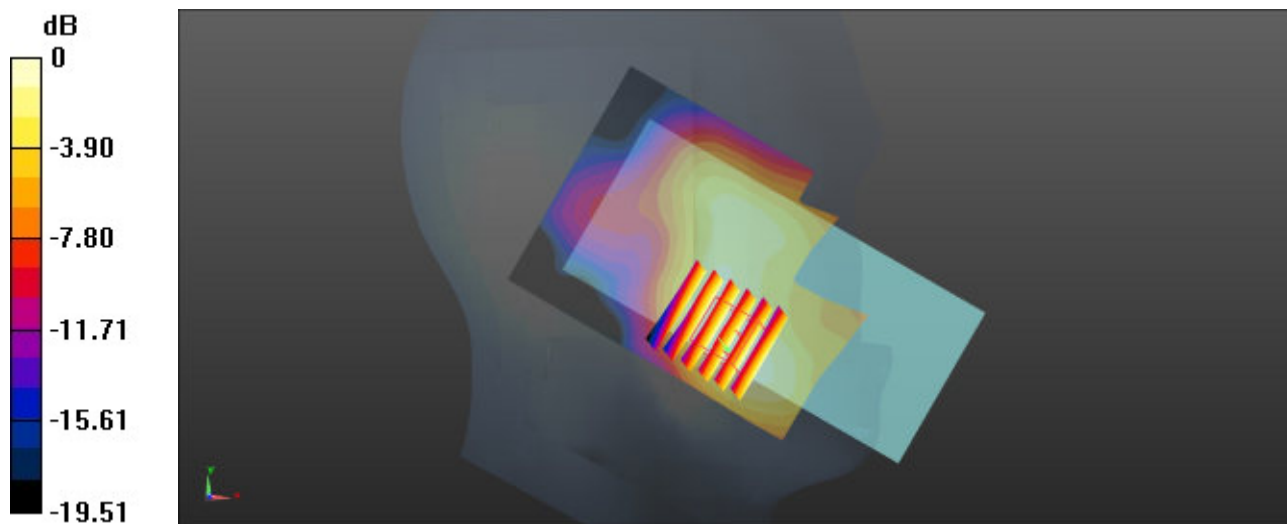
**Zoom Scan (6x6x7)/Cube 0:** Measurement grid: dx=8mm, dy=8mm, dz=5mm

Reference Value = 19.49 V/m; Power Drift = 0.03 dB

Peak SAR (extrapolated) = 0.622 W/kg

**SAR(1 g) = 0.392 W/kg; SAR(10 g) = 0.254 W/kg**

Maximum value of SAR (measured) = 0.534 W/kg



0 dB = 0.534 W/kg = -2.72 dBW/kg

### 19\_LTE Band 25\_20M\_QPSK\_1RB\_0Offset\_Right Tilted\_0mm\_Ch26140

Communication System: UID 0, LTE-FDD (0); Frequency: 1860 MHz; Duty Cycle: 1:1  
Medium: HSL\_1900 Medium parameters used:  $f = 1860$  MHz;  $\sigma = 1.431$  S/m;  $\epsilon_r = 39.709$ ;  $\rho = 1000$  kg/m<sup>3</sup>

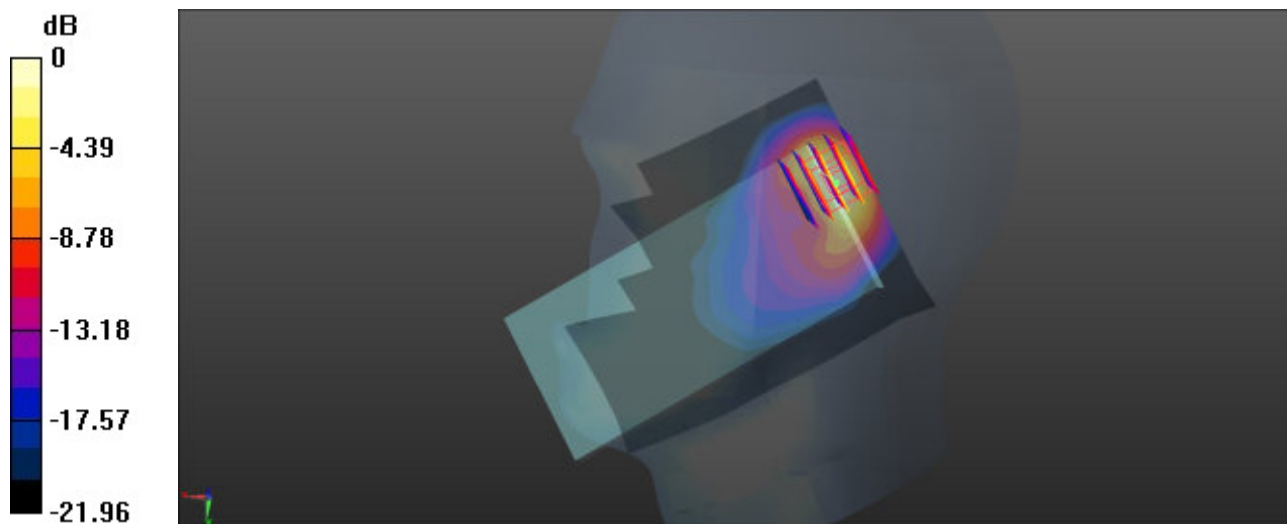
Ambient Temperature : 23.4 °C; Liquid Temperature : 22.6 °C

#### DASY5 Configuration:

- Probe: ES3DV3 - SN3279; ConvF(5.28, 5.28, 5.28); Calibrated: 2021.8.24
- Sensor-Surface: 3mm (Mechanical Surface Detection)
- Electronics: DAE4 Sn1356; Calibrated: 2021.6.1
- Phantom: SAM Twin Phantom; Type: SAM Twin; Serial: TP-1842
- Measurement SW: DASY52, Version 52.10 (4); SEMCAD X Version 14.6.14 (7483)

**Area Scan (81x101x1):** Interpolated grid: dx=1.500 mm, dy=1.500 mm  
Maximum value of SAR (interpolated) = 1.56 W/kg

**Zoom Scan (5x5x7)/Cube 0:** Measurement grid: dx=8mm, dy=8mm, dz=5mm  
Reference Value = 17.27 V/m; Power Drift = 0.08 dB  
Peak SAR (extrapolated) = 1.93 W/kg  
**SAR(1 g) = 0.919 W/kg; SAR(10 g) = 0.410 W/kg**  
Maximum value of SAR (measured) = 1.58 W/kg



0 dB = 1.58 W/kg = 1.99 dBW/kg

**20\_FR1 n25\_40M\_QPSK\_108RB\_54Offset\_Right Tilted\_0mm\_Ch376500**

Communication System: UID 0, 5G NR (0); Frequency: 1882.5 MHz; Duty Cycle: 1:1  
Medium: HSL\_1900 Medium parameters use:  $f = 1882.5$  MHz;  $\sigma = 1.444$  S/m;  $\epsilon_r = 39.684$ ;  $\rho = 1000$  kg/m<sup>3</sup>

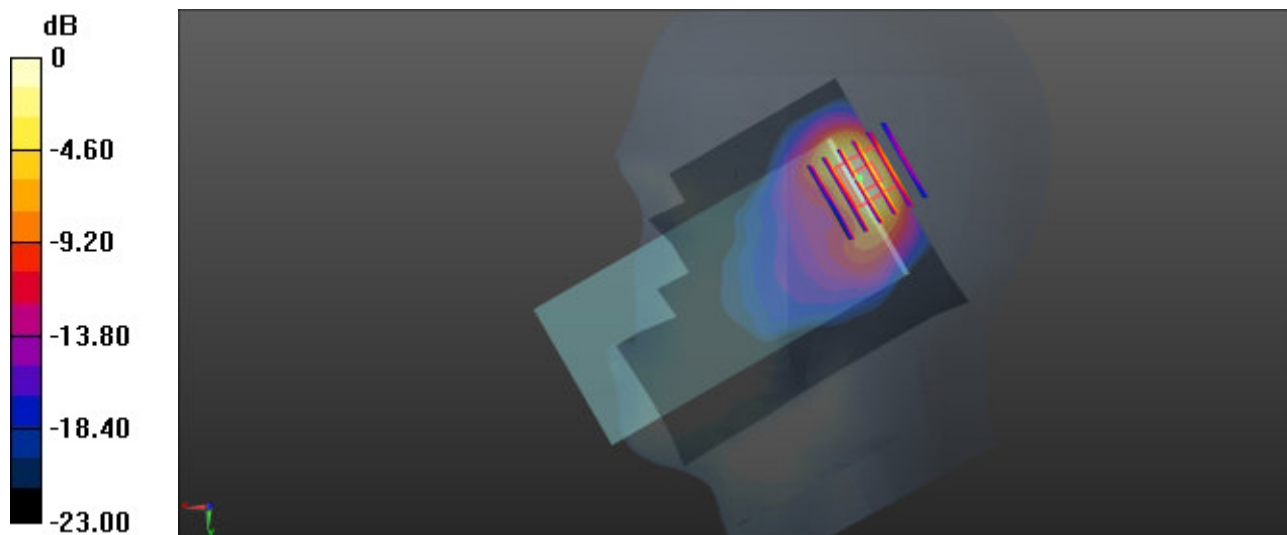
Ambient Temperature : 23.4 °C; Liquid Temperature : 22.6 °C

**DASY5 Configuration:**

- Probe: ES3DV3 - SN3279; ConvF(5.28, 5.28, 5.28); Calibrated: 2021.8.24
- Sensor-Surface: 3mm (Mechanical Surface Detection)
- Electronics: DAE4 Sn1356; Calibrated: 2021.6.1
- Phantom: SAM Twin Phantom; Type: SAM Twin; Serial: TP-1842
- Measurement SW: DASY52, Version 52.10 (4); SEMCAD X Version 14.6.14 (7483)

**Area Scan (81x101x1):** Interpolated grid: dx=1.500 mm, dy=1.500 mm  
Maximum value of SAR (interpolated) = 0.791 W/kg

**Zoom Scan (6x6x7)/Cube 0:** Measurement grid: dx=8mm, dy=8mm, dz=5mm  
Reference Value = 6.88 V/m; Power Drift = 0.06 dB  
Peak SAR (extrapolated) = 1.06 W/kg  
**SAR(1 g) = 0.488 W/kg; SAR(10 g) = 0.212 W/kg**  
Maximum value of SAR (measured) = 0.744 W/kg



0 dB = 0.744 W/kg = -1.29 dBW/kg

### 21\_LTE Band 30\_10M\_QPSK\_1RB\_0Offset\_Left Cheek\_0mm\_Ch27710

Communication System: UID 0, LTE-FDD (0); Frequency: 2310 MHz; Duty Cycle: 1:1  
Medium: HSL\_2300 Medium parameters used:  $f = 2310$  MHz;  $\sigma = 1.722$  S/m;  $\epsilon_r = 38.689$ ;  $\rho = 1000$  kg/m<sup>3</sup>

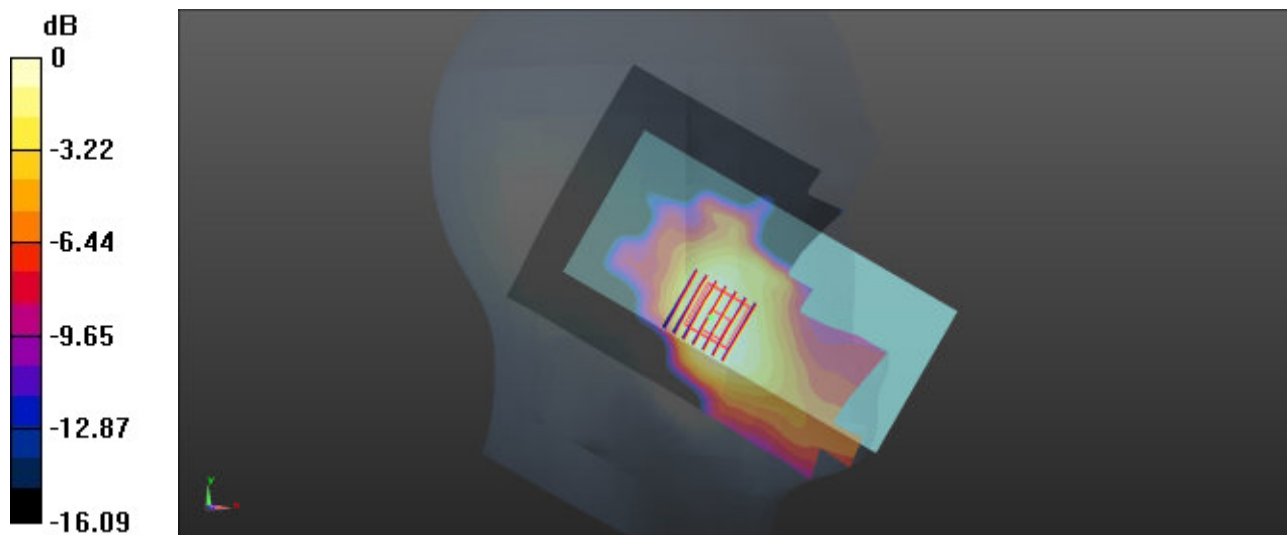
Ambient Temperature : 23.3 °C; Liquid Temperature : 22.7 °C

#### DASY5 Configuration:

- Probe: ES3DV3 - SN3279; ConvF(4.95, 4.95, 4.95); Calibrated: 2021.8.24
- Sensor-Surface: 3mm (Mechanical Surface Detection)
- Electronics: DAE4 Sn1356; Calibrated: 2021.6.1
- Phantom: SAM Twin Phantom; Type: SAM Twin; Serial: TP-1842
- Measurement SW: DASY52, Version 52.10 (4); SEMCAD X Version 14.6.14 (7483)

**Area Scan (101x151x1):** Interpolated grid: dx=1.200 mm, dy=1.200 mm  
Maximum value of SAR (interpolated) = 0.279 W/kg

**Zoom Scan (7x7x7)/Cube 0:** Measurement grid: dx=5mm, dy=5mm, dz=5mm  
Reference Value = 1.376 V/m; Power Drift = -0.02 dB  
Peak SAR (extrapolated) = 0.291 W/kg  
**SAR(1 g) = 0.176 W/kg; SAR(10 g) = 0.106 W/kg**  
Maximum value of SAR (measured) = 0.248 W/kg



0 dB = 0.248 W/kg = -6.06 dBW/kg

**22\_FR1 n30\_10M\_QPSK\_25RB\_14Offset\_Right Tilted\_0mm\_Ch462000**

Communication System: UID 0, 5G NR (0); Frequency: 2310 MHz; Duty Cycle: 1:1

Medium: HSL\_2300 Medium parameters used:  $f = 2310$  MHz;  $\sigma = 1.722$  S/m;  $\epsilon_r = 38.689$ ;  $\rho = 1000$  kg/m<sup>3</sup>

Ambient Temperature : 23.3 °C; Liquid Temperature : 22.7 °C

**DASY5 Configuration:**

- Probe: ES3DV3 - SN3279; ConvF(4.95, 4.95, 4.95); Calibrated: 2021.8.24
- Sensor-Surface: 3mm (Mechanical Surface Detection)
- Electronics: DAE4 Sn1356; Calibrated: 2021.6.1
- Phantom: SAM Twin Phantom; Type: SAM Twin; Serial: TP-1842
- Measurement SW: DASY52, Version 52.10 (4); SEMCAD X Version 14.6.14 (7483)

**Area Scan (91x161x1):** Interpolated grid: dx=1.200 mm, dy=1.200 mm

Maximum value of SAR (interpolated) = 0.845 W/kg

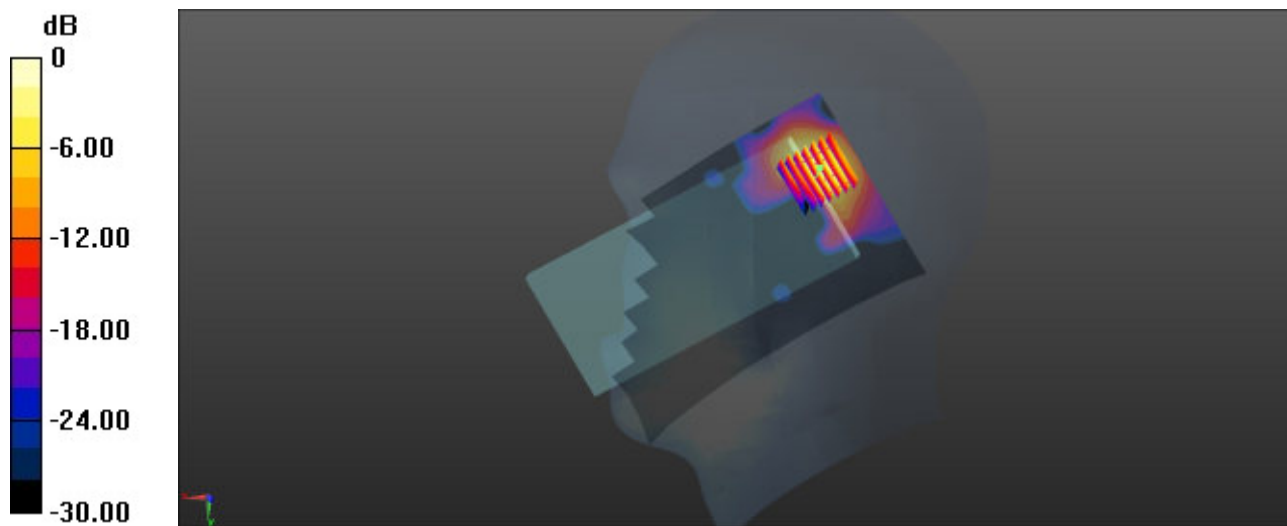
**Zoom Scan (7x7x7)/Cube 0:** Measurement grid: dx=5mm, dy=5mm, dz=5mm

Reference Value = 1.959 V/m; Power Drift = 0.01 dB

Peak SAR (extrapolated) = 1.03 W/kg

**SAR(1 g) = 0.437 W/kg; SAR(10 g) = 0.180 W/kg**

Maximum value of SAR (measured) = 0.784 W/kg



0 dB = 0.784 W/kg = -1.06 dBW/kg

### 23\_LTE Band 7\_20M\_QPSK\_1RB\_0Offset\_Left Cheek\_0mm\_Ch21100

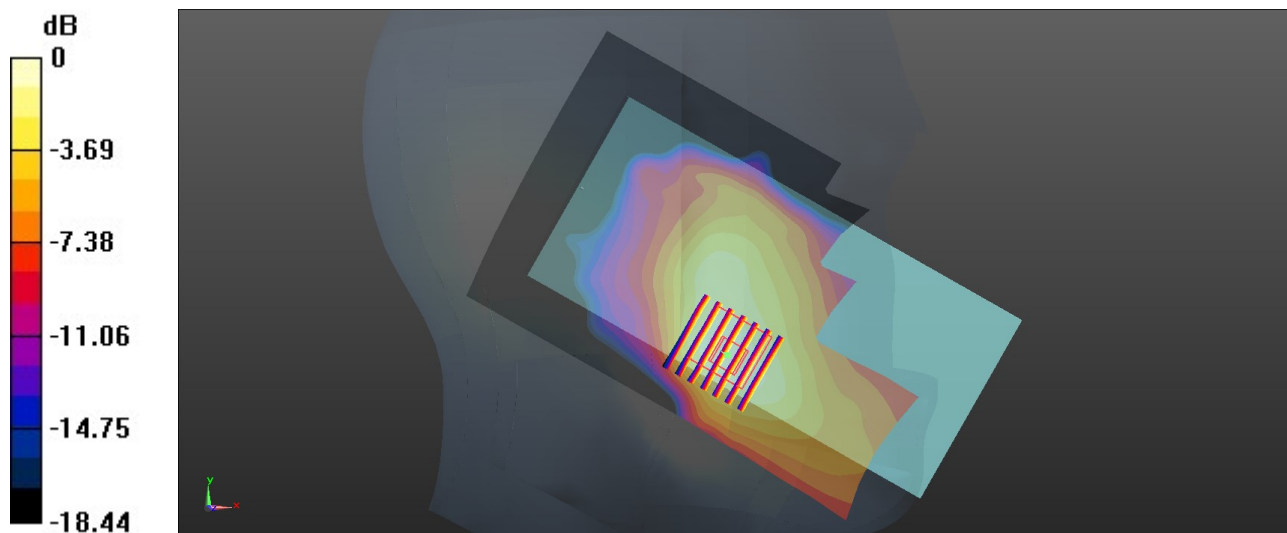
Communication System: UID 0, LTE-FDD (0); Frequency: 2535 MHz; Duty Cycle: 1:1  
Medium: HSL\_2600 Medium parameters used:  $f = 2535$  MHz;  $\sigma = 1.934$  S/m;  $\epsilon_r = 40.654$ ;  $\rho = 1000$  kg/m<sup>3</sup>  
Ambient Temperature : 23.2 °C; Liquid Temperature : 22.8 °C

#### DASY5 Configuration:

- Probe: ES3DV3 - SN3279; ConvF(4.47, 4.47, 4.47); Calibrated: 2021.8.24
- Sensor-Surface: 3mm (Mechanical Surface Detection)
- Electronics: DAE4 Sn1356; Calibrated: 2021.6.1
- Phantom: SAM Twin Phantom; Type: SAM Twin; Serial: TP-1842
- Measurement SW: DASY52, Version 52.10 (4); SEMCAD X Version 14.6.14 (7483)

**Area Scan (91x131x1):** Interpolated grid: dx=1.200 mm, dy=1.200 mm  
Maximum value of SAR (interpolated) = 0.588 W/kg

**Zoom Scan (7x7x7)/Cube 0:** Measurement grid: dx=5mm, dy=5mm, dz=5mm  
Reference Value = 2.069 V/m; Power Drift = 0.01 dB  
Peak SAR (extrapolated) = 0.684 W/kg  
**SAR(1 g) = 0.389 W/kg; SAR(10 g) = 0.223 W/kg**  
Maximum value of SAR (measured) = 0.569 W/kg



0 dB = 0.569 W/kg = -2.45 dBW/kg

### 24\_LTE Band 41-HPUE\_20M\_QPSK\_1RB\_0Offset\_Left Cheek\_0mm\_Ch40620

Communication System: UID 0, LTE-HPUE (0); Frequency: 2593 MHz; Duty Cycle: 1:2.33  
Medium: HSL\_2600 Medium parameters used:  $f = 2593$  MHz;  $\sigma = 1.972$  S/m;  $\epsilon_r = 40.624$ ;  $\rho = 1000$  kg/m<sup>3</sup>

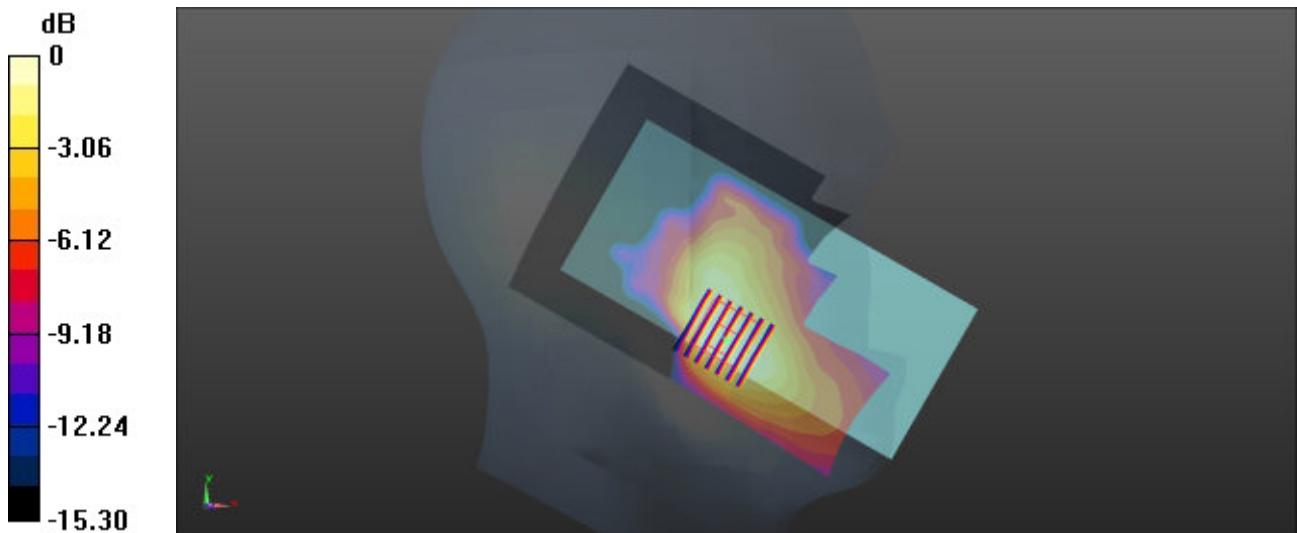
Ambient Temperature : 23.2 °C; Liquid Temperature : 22.8 °C

#### DASY5 Configuration:

- Probe: ES3DV3 - SN3279; ConvF(4.47, 4.47, 4.47); Calibrated: 2021.8.24
- Sensor-Surface: 3mm (Mechanical Surface Detection)
- Electronics: DAE4 Sn1356; Calibrated: 2021.6.1
- Phantom: SAM Twin Phantom; Type: SAM Twin; Serial: TP-1842
- Measurement SW: DASY52, Version 52.10 (4); SEMCAD X Version 14.6.14 (7483)

**Area Scan (91x131x1):** Interpolated grid: dx=1.200 mm, dy=1.200 mm  
Maximum value of SAR (interpolated) = 0.294 W/kg

**Zoom Scan (7x7x7)/Cube 0:** Measurement grid: dx=5mm, dy=5mm, dz=5mm  
Reference Value = 1.843 V/m; Power Drift = 0.06 dB  
Peak SAR (extrapolated) = 0.314 W/kg  
**SAR(1 g) = 0.177 W/kg; SAR(10 g) = 0.101 W/kg**  
Maximum value of SAR (measured) = 0.257 W/kg



0 dB = 0.257 W/kg = -5.90 dBW/kg

**25\_FR1 n41-HPUE\_100M\_QPSK\_1RB\_1Offset\_Right Tilted\_0mm\_Ch518598**

Communication System: UID 0, 5G NR (0); Frequency: 2592.99 MHz; Duty Cycle: 1:1  
Medium: HSL\_2600 Medium parameters used:  $f = 2593$  MHz;  $\sigma = 1.972$  S/m;  $\epsilon_r = 40.624$ ;  $\rho = 1000$  kg/m<sup>3</sup>

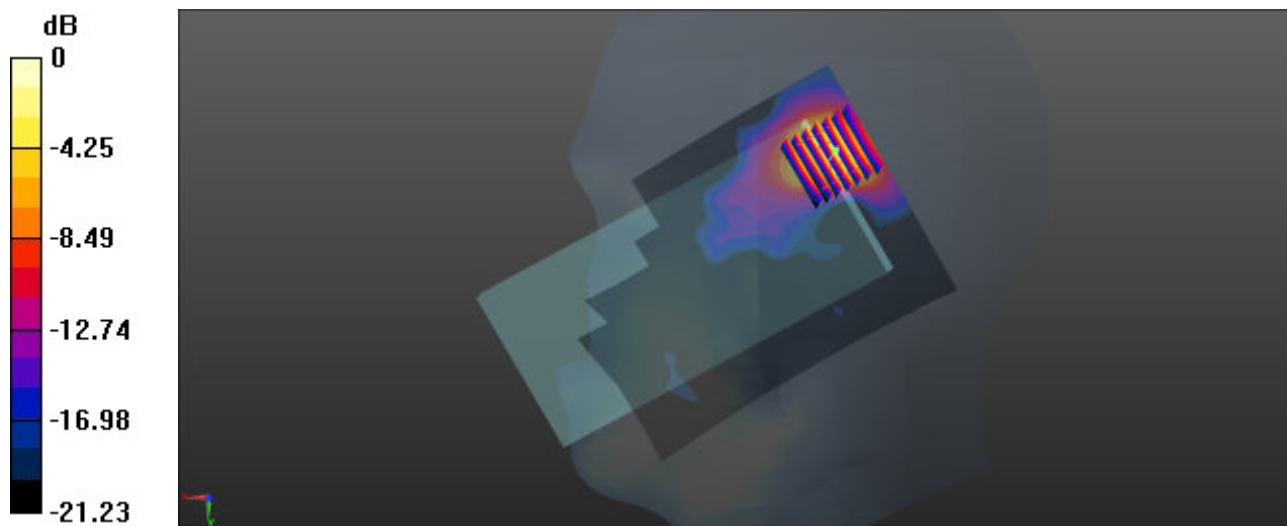
Ambient Temperature : 23.2 °C; Liquid Temperature : 22.8 °C

**DASY5 Configuration:**

- Probe: ES3DV3 - SN3279; ConvF(4.47, 4.47, 4.47); Calibrated: 2021.8.24
- Sensor-Surface: 3mm (Mechanical Surface Detection)
- Electronics: DAE4 Sn1356; Calibrated: 2021.6.1
- Phantom: SAM Twin Phantom; Type: SAM Twin; Serial: TP-1842
- Measurement SW: DASY52, Version 52.10 (4); SEMCAD X Version 14.6.14 (7483)

**Area Scan (91x121x1):** Interpolated grid: dx=1.200 mm, dy=1.200 mm  
Maximum value of SAR (interpolated) = 0.700 W/kg

**Zoom Scan (7x7x7)/Cube 0:** Measurement grid: dx=5mm, dy=5mm, dz=5mm  
Reference Value = 3.008 V/m; Power Drift = 0.07 dB  
Peak SAR (extrapolated) = 1.07 W/kg  
**SAR(1 g) = 0.425 W/kg; SAR(10 g) = 0.175 W/kg**  
Maximum value of SAR (measured) = 0.807 W/kg



0 dB = 0.807 W/kg = -0.93 dBW/kg

### 26\_LTE Band 48\_20M\_QPSK\_1RB\_0Offset\_Left Tilted\_0mm\_Ch56640

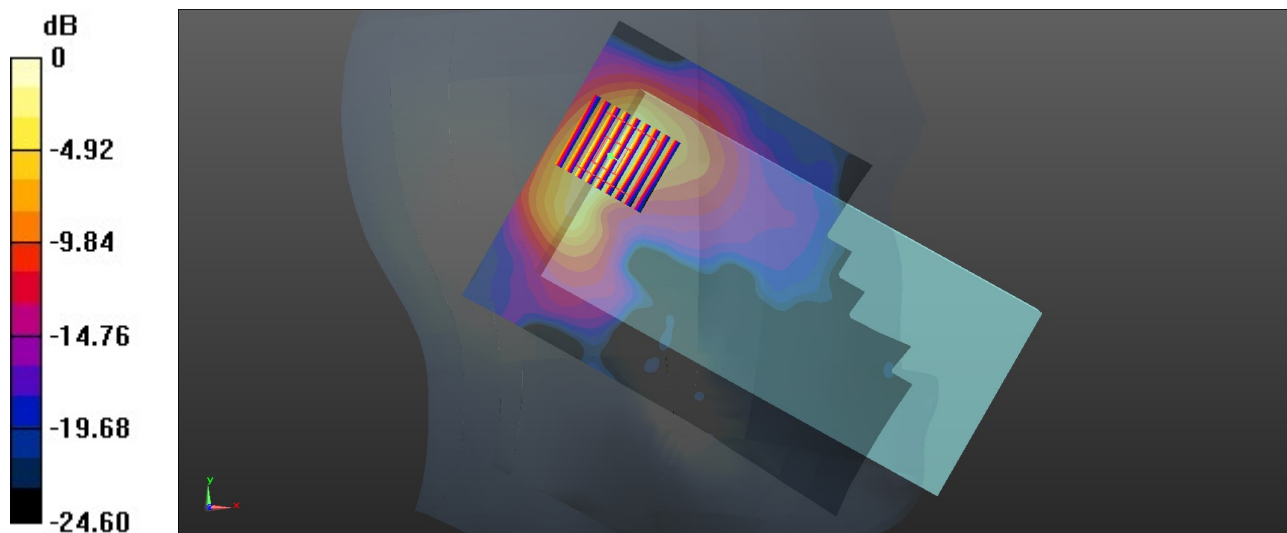
Communication System: UID 0, LTE-TDD (0); Frequency: 3690 MHz; Duty Cycle: 1:1.59  
Medium: HSL\_3700 Medium parameters used:  $f = 3690$  MHz;  $\sigma = 3.015$  S/m;  $\epsilon_r = 38.739$ ;  $\rho = 1000$  kg/m<sup>3</sup>  
Ambient Temperature : 23.1 °C; Liquid Temperature : 22.9 °C

#### DASY5 Configuration:

- Probe: EX3DV4-SN7684; ConvF(7.27, 7.27, 7.27); Calibrated: 2021.10.4
- Sensor-Surface: 1.4mm (Mechanical Surface Detection)
- Electronics: DAE4 Sn1303; Calibrated: 2021.6.18
- Phantom: SAM Twin Phantom; Type: SAM Twin; Serial: TP-1697
- Measurement SW: DASY52, Version 52.10 (4); SEMCAD X Version 14.6.14 (7483)

**Area Scan (111x151x1):** Interpolated grid: dx=1.000 mm, dy=1.000 mm  
Maximum value of SAR (interpolated) = 1.78 W/kg

**Zoom Scan (8x9x7)/Cube 0:** Measurement grid: dx=4mm, dy=4mm, dz=1.4mm  
Reference Value = 12.62 V/m; Power Drift = -0.08 dB  
Peak SAR (extrapolated) = 2.69 W/kg  
**SAR(1 g) = 0.924 W/kg; SAR(10 g) = 0.361 W/kg**  
Maximum value of SAR (measured) = 1.86 W/kg



0 dB = 1.86 W/kg = 2.70 dBW/kg

**27\_FR1 n77-HPUE\_100M\_QPSK\_135RB\_69Offset\_Left Tilted\_0mm\_Ch633334**

Communication System: UID 0, 5G NR (0); Frequency: 3500.01 MHz; Duty Cycle: 1:1  
Medium: HSL\_3900 Medium parameters used:  $f = 3500$  MHz;  $\sigma = 3.258$  S/m;  $\epsilon_r = 38.829$ ;  $\rho = 1000$  kg/m<sup>3</sup>

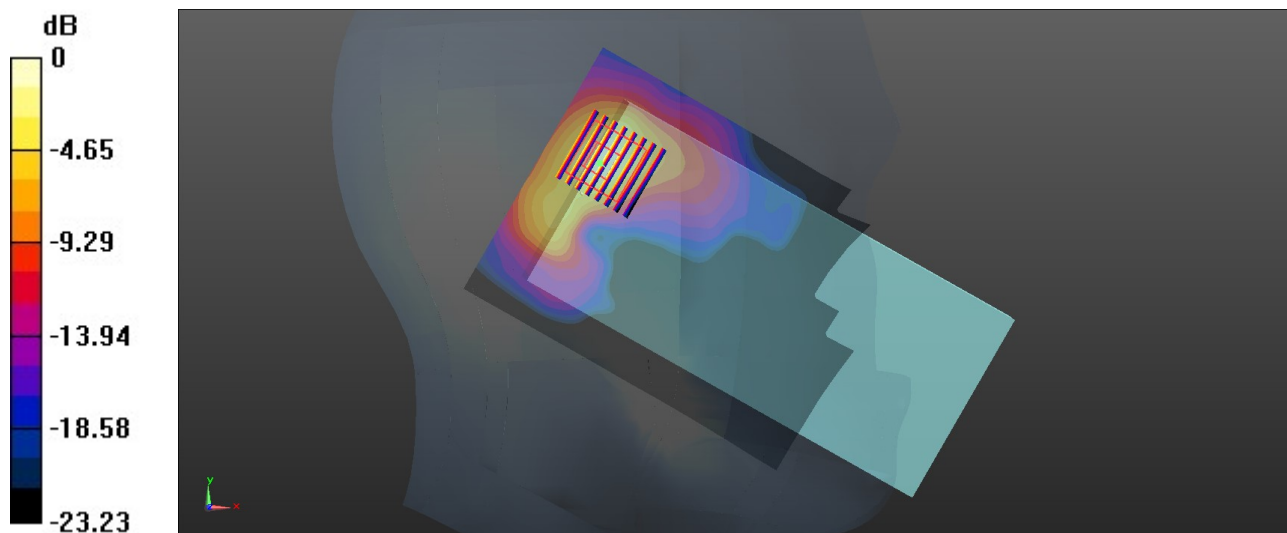
Ambient Temperature : 23.2 °C; Liquid Temperature : 22.6 °C

**DASY5 Configuration:**

- Probe: EX3DV4-SN7684; ConvF(6.83, 6.83, 6.83); Calibrated: 2021.10.4
- Sensor-Surface: 1.4mm (Mechanical Surface Detection)
- Electronics: DAE4 Sn1303; Calibrated: 2021.6.18
- Phantom: SAM Twin Phantom; Type: SAM Twin; Serial: TP-1697
- Measurement SW: DASY52, Version 52.10 (4); SEMCAD X Version 14.6.14 (7483)

**Area Scan (101x131x1):** Interpolated grid: dx=1.000 mm, dy=1.000 mm  
Maximum value of SAR (interpolated) = 1.36 W/kg

**Zoom Scan (8x8x7)/Cube 0:** Measurement grid: dx=4mm, dy=4mm, dz=1.4mm  
Reference Value = 18.87 V/m; Power Drift = 0.15 dB  
Peak SAR (extrapolated) = 1.79 W/kg  
**SAR(1 g) = 0.923 W/kg; SAR(10 g) = 0.462 W/kg**  
Maximum value of SAR (measured) = 1.31 W/kg



0 dB = 1.31 W/kg = 1.17 dBW/kg

### 28\_WLAN2.4GHz\_802.11b 1Mbps\_Left Cheek\_0mm\_Ch6

Communication System: UID 0, WLAN2.4GHz (0); Frequency: 2437 MHz; Duty Cycle: 1:1  
Medium: HSL\_2450 Medium parameters used:  $f = 2437$  MHz;  $\sigma = 1.798$  S/m;  $\epsilon_r = 38.661$ ;  $\rho = 1000$  kg/m<sup>3</sup>

Ambient Temperature : 23.3 °C; Liquid Temperature : 22.7 °C

#### DASY5 Configuration:

- Probe: ES3DV3 - SN3279; ConvF(4.75, 4.75, 4.75); Calibrated: 2021.8.24
- Sensor-Surface: 3mm (Mechanical Surface Detection)
- Electronics: DAE4 Sn1356; Calibrated: 2021.6.1
- Phantom: SAM Twin Phantom; Type: SAM Twin; Serial: TP-1503
- Measurement SW: DASY52, Version 52.10 (4); SEMCAD X Version 14.6.14 (7483)

**Area Scan (101x91x1):** Interpolated grid: dx=1.200 mm, dy=1.200 mm

Maximum value of SAR (interpolated) = 3.36 W/kg

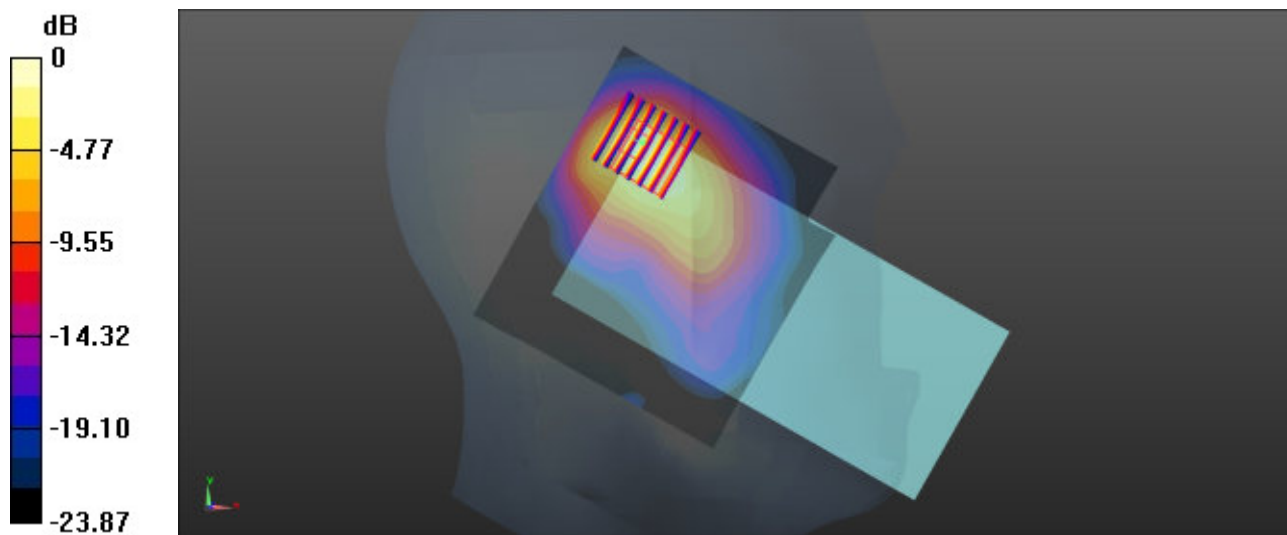
**Zoom Scan (7x7x7)/Cube 0:** Measurement grid: dx=5mm, dy=5mm, dz=5mm

Reference Value = 40.75 V/m; Power Drift = -0.11 dB

Peak SAR (extrapolated) = 4.54 W/kg

**SAR(1 g) = 0.890 W/kg; SAR(10 g) = 0.462 W/kg**

Maximum value of SAR (measured) = 3.46 W/kg



0 dB = 3.46 W/kg = 5.39 dBW/kg

### 29\_Bluetooth\_1Mbps\_Left Cheek\_0mm\_Ch78

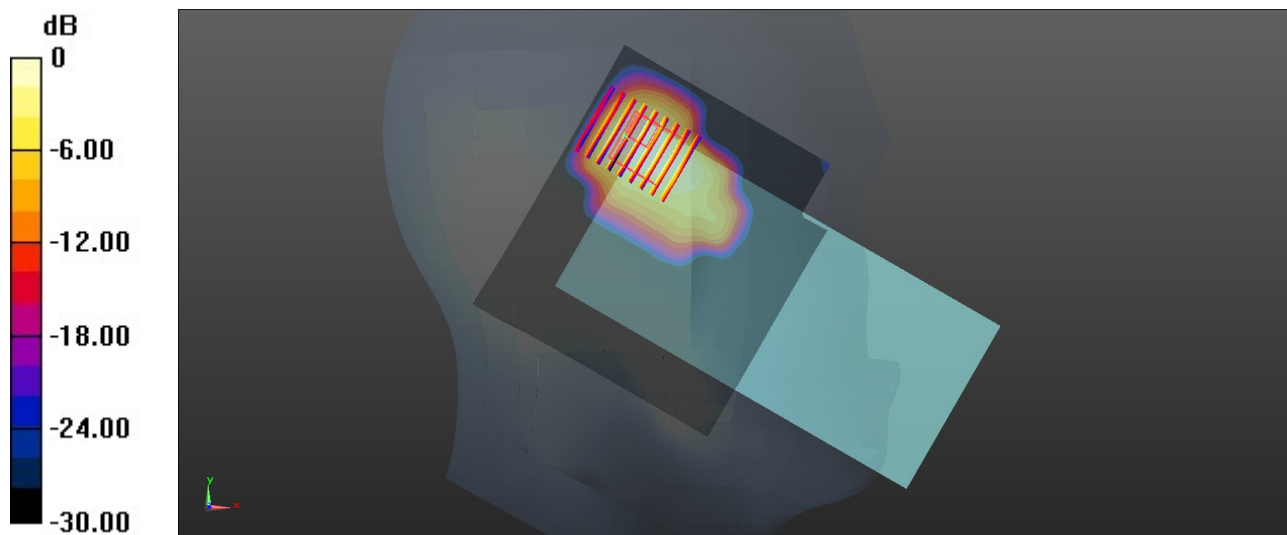
Communication System: UID 0, Bluetooth (0); Frequency: 2480 MHz; Duty Cycle: 1:1.302  
Medium: HSL\_2450 Medium parameters used:  $f = 2480$  MHz;  $\sigma = 1.833$  S/m;  $\epsilon_r = 38.496$ ;  $\rho = 1000$  kg/m<sup>3</sup>  
Ambient Temperature : 23.3 °C; Liquid Temperature : 22.7 °C

#### DASY5 Configuration:

- Probe: ES3DV3 - SN3279; ConvF(4.75, 4.75, 4.75); Calibrated: 2021.8.24
- Sensor-Surface: 3mm (Mechanical Surface Detection)
- Electronics: DAE4 Sn1356; Calibrated: 2021.6.1
- Phantom: SAM Twin Phantom; Type: SAM Twin; Serial: TP-1503
- Measurement SW: DASY52, Version 52.10 (4); SEMCAD X Version 14.6.14 (7483)

**Area Scan (101x91x1):** Interpolated grid: dx=1.200 mm, dy=1.200 mm  
Maximum value of SAR (interpolated) = 0.156 W/kg

**Zoom Scan (7x9x7)/Cube 0:** Measurement grid: dx=5mm, dy=5mm, dz=5mm  
Reference Value = 8.019 V/m; Power Drift = -0.08 dB  
Peak SAR (extrapolated) = 0.156 W/kg  
**SAR(1 g) = 0.077 W/kg; SAR(10 g) = 0.037 W/kg**  
Maximum value of SAR (measured) = 0.133 W/kg



0 dB = 0.133 W/kg = -8.76 dBW/kg

### 30\_WLAN5GHz\_802.11n-HT40 MCS0\_Left Tilted\_0mm\_Ch54

Communication System: UID 0, WLAN5GHz (0); Frequency: 5270 MHz; Duty Cycle: 1:1.056  
Medium: HSL\_5000 Medium parameters used:  $f = 5270$  MHz;  $\sigma = 4.604$  S/m;  $\epsilon_r = 36.04$ ;  $\rho = 1000$  kg/m<sup>3</sup>

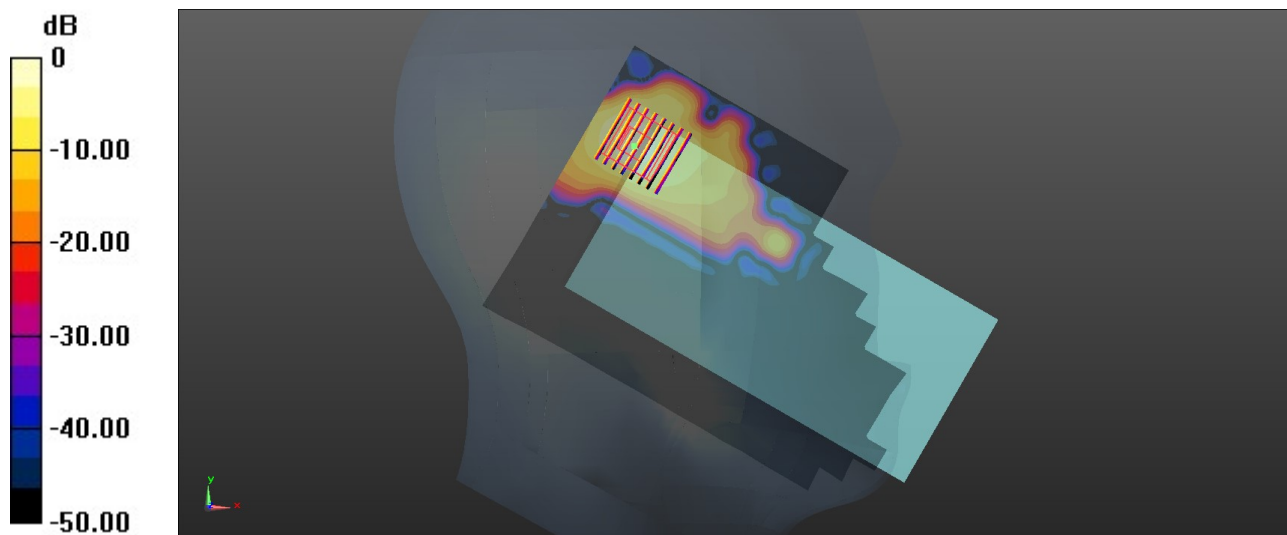
Ambient Temperature : 23.3 °C; Liquid Temperature : 22.8 °C

#### DASY5 Configuration:

- Probe: EX3DV4-SN7684; ConvF(5.85, 5.85, 5.85); Calibrated: 2021.10.4
- Sensor-Surface: 1.4mm (Mechanical Surface Detection)
- Electronics: DAE4 Sn1303; Calibrated: 2021.6.18
- Phantom: SAM Twin Phantom; Type: SAM Twin; Serial: TP-1697
- Measurement SW: DASY52, Version 52.10 (4); SEMCAD X Version 14.6.14 (7483)

**Area Scan (121x181x1):** Interpolated grid: dx=1.000 mm, dy=1.000 mm  
Maximum value of SAR (interpolated) = 2.38 W/kg

**Zoom Scan (8x8x7)/Cube 0:** Measurement grid: dx=4mm, dy=4mm, dz=1.4mm  
Reference Value = 17.90 V/m; Power Drift = -0.03 dB  
Peak SAR (extrapolated) = 4.21 W/kg  
**SAR(1 g) = 0.730 W/kg; SAR(10 g) = 0.305 W/kg**  
Maximum value of SAR (measured) = 2.62 W/kg



0 dB = 2.62 W/kg = 4.18 dBW/kg

### 31\_WLAN5GHz\_802.11n-HT40 MCS0\_Left Tilted\_0mm\_Ch134

Communication System: UID 0, WLAN5GHz (0); Frequency: 5670 MHz; Duty Cycle: 1:1.056  
Medium: HSL\_5000 Medium parameters used:  $f = 5670$  MHz;  $\sigma = 5.016$  S/m;  $\epsilon_r = 35.501$ ;  $\rho = 1000$  kg/m<sup>3</sup>

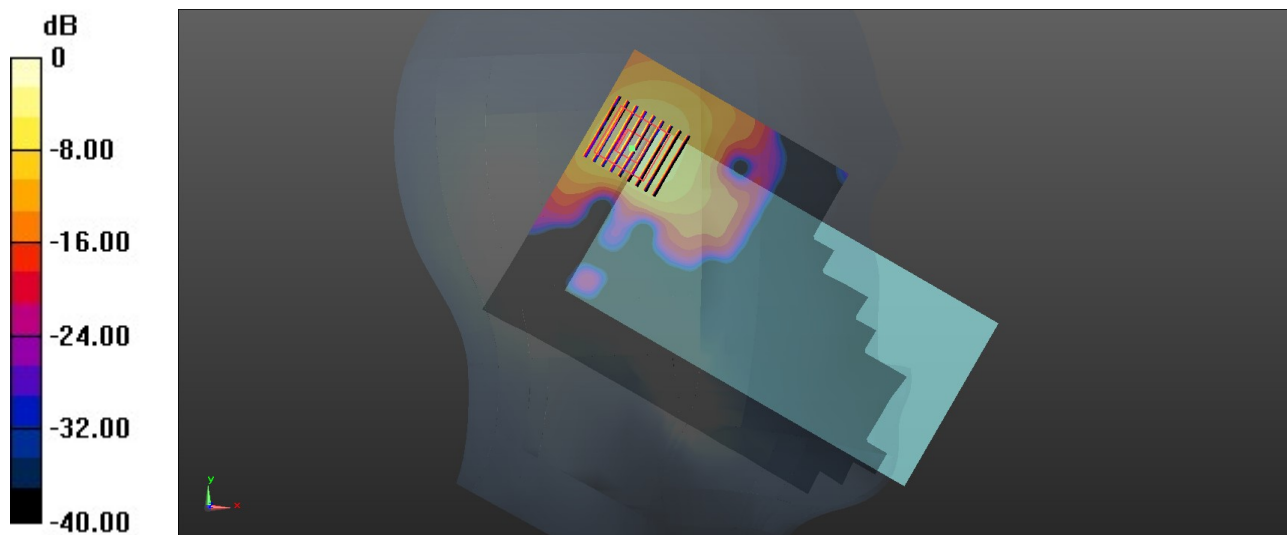
Ambient Temperature : 23.3 °C; Liquid Temperature : 22.8 °C

#### DASY5 Configuration:

- Probe: EX3DV4-SN7684; ConvF(5.05, 5.05, 5.05); Calibrated: 2021.10.4
- Sensor-Surface: 1.4mm (Mechanical Surface Detection)
- Electronics: DAE4 Sn1303; Calibrated: 2021.6.18
- Phantom: SAM Twin Phantom; Type: SAM Twin; Serial: TP-1697
- Measurement SW: DASY52, Version 52.10 (4); SEMCAD X Version 14.6.14 (7483)

**Area Scan (121x181x1):** Interpolated grid: dx=1.000 mm, dy=1.000 mm  
Maximum value of SAR (interpolated) = 3.42 W/kg

**Zoom Scan (8x9x7)/Cube 0:** Measurement grid: dx=4mm, dy=4mm, dz=1.4mm  
Reference Value = 22.88 V/m; Power Drift = -0.18 dB  
Peak SAR (extrapolated) = 6.17 W/kg  
**SAR(1 g) = 0.759 W/kg; SAR(10 g) = 0.344 W/kg**  
Maximum value of SAR (measured) = 3.63 W/kg



0 dB = 3.63 W/kg = 5.60 dBW/kg

### 32\_WLAN5GHz\_802.11ac-VHT80 MCS0\_Left Tilted\_0mm\_Ch155

Communication System: UID 0, WLAN5GHz (0); Frequency: 5775 MHz; Duty Cycle: 1:1.108  
Medium: HSL\_5000 Medium parameters used:  $f = 5775$  MHz;  $\sigma = 5.092$  S/m;  $\epsilon_r = 35.379$ ;  $\rho = 1000$  kg/m<sup>3</sup>

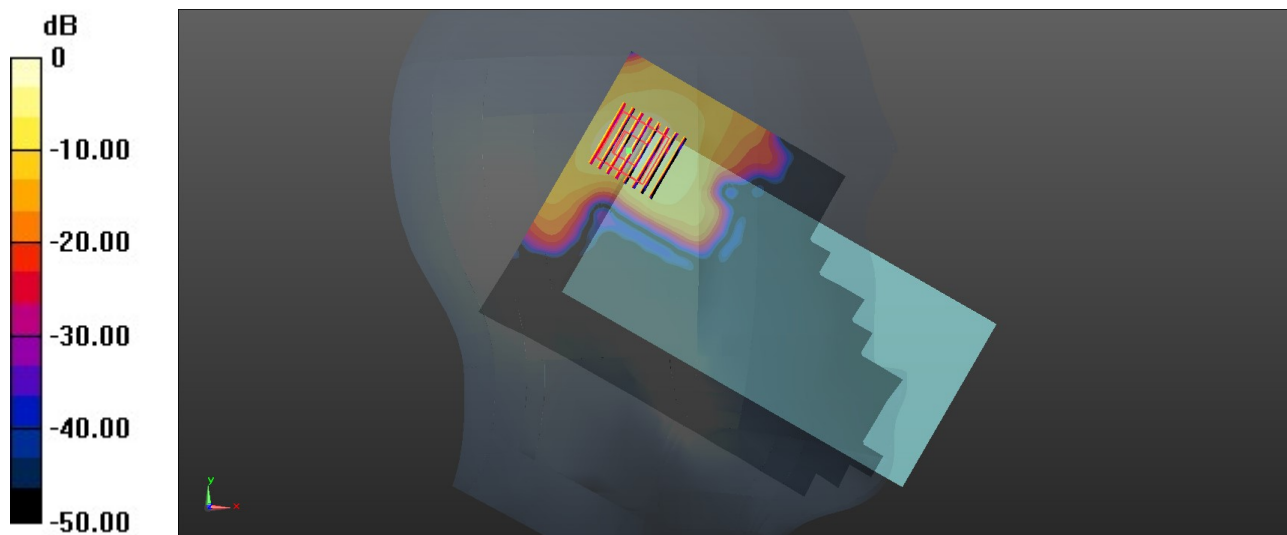
Ambient Temperature : 23.3 °C; Liquid Temperature : 22.8 °C

#### DASY5 Configuration:

- Probe: EX3DV4-SN7684; ConvF(5.25, 5.25, 5.25); Calibrated: 2021.10.4
- Sensor-Surface: 1.4mm (Mechanical Surface Detection)
- Electronics: DAE4 Sn1303; Calibrated: 2021.6.18
- Phantom: SAM Twin Phantom; Type: SAM Twin; Serial: TP-1697
- Measurement SW: DASY52, Version 52.10 (4); SEMCAD X Version 14.6.14 (7483)

**Area Scan (121x181x1):** Interpolated grid: dx=1.000 mm, dy=1.000 mm  
Maximum value of SAR (interpolated) = 1.94 W/kg

**Zoom Scan (8x8x7)/Cube 0:** Measurement grid: dx=4mm, dy=4mm, dz=1.4mm  
Reference Value = 21.14 V/m; Power Drift = 0.15 dB  
Peak SAR (extrapolated) = 3.15 W/kg  
**SAR(1 g) = 0.728 W/kg; SAR(10 g) = 0.203 W/kg**  
Maximum value of SAR (measured) = 2.00 W/kg



0 dB = 2.00 W/kg = 3.01 dBW/kg

### 33\_LTE Band 71\_20M\_QPSK\_1RB\_0Offset\_Back\_5mm\_Ch133322

Communication System: UID 0, LTE-FDD (0); Frequency: 683 MHz; Duty Cycle: 1:1  
 Medium: HSL\_750 Medium parameters used:  $f = 683 \text{ MHz}$ ;  $\sigma = 0.891 \text{ S/m}$ ;  $\epsilon_r = 41.939$ ;  $\rho = 1000 \text{ kg/m}^3$

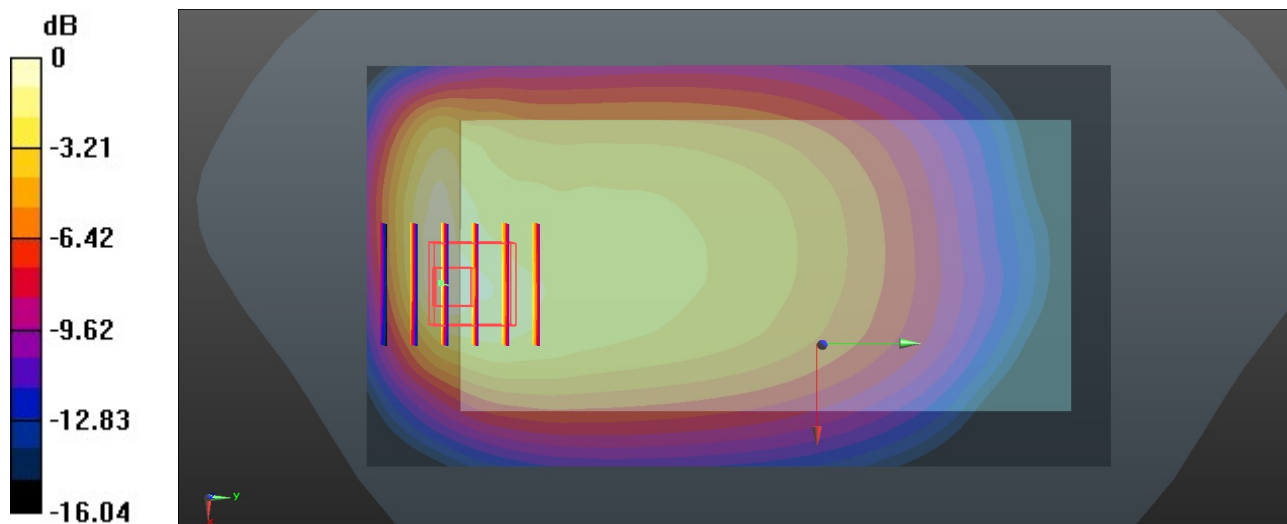
Ambient Temperature : 23.2 °C; Liquid Temperature : 22.7 °C

#### DASY5 Configuration:

- Probe: ES3DV3 - SN3279; ConvF(6.48, 6.48, 6.48); Calibrated: 2021.8.24
- Sensor-Surface: 3mm (Mechanical Surface Detection)
- Electronics: DAE4 Sn1356; Calibrated: 2021.6.1
- Phantom: SAM Twin Phantom; Type: SAM Twin; Serial: TP-1842
- Measurement SW: DASY52, Version 52.10 (4); SEMCAD X Version 14.6.14 (7483)

**Area Scan (71x131x1):** Interpolated grid:  $dx=1.500 \text{ mm}$ ,  $dy=1.500 \text{ mm}$   
 Maximum value of SAR (interpolated) = 0.821 W/kg

**Zoom Scan (5x6x7)/Cube 0:** Measurement grid:  $dx=8\text{mm}$ ,  $dy=8\text{mm}$ ,  $dz=5\text{mm}$   
 Reference Value = 27.75 V/m; Power Drift = -0.03 dB  
 Peak SAR (extrapolated) = 1.34 W/kg  
**SAR(1 g) = 0.664 W/kg; SAR(10 g) = 0.386 W/kg**  
 Maximum value of SAR (measured) = 0.836 W/kg



0 dB = 0.836 W/kg = -0.78 dBW/kg

### 34\_LTE Band 12\_10M\_QPSK\_1RB\_0Offset\_Back\_5mm\_Ch23095

Communication System: UID 0, LTE-FDD (0); Frequency: 707.5 MHz; Duty Cycle: 1:1  
Medium: HSL\_750 Medium parameters used:  $f = 707.5$  MHz;  $\sigma = 0.899$  S/m;  $\epsilon_r = 41.873$ ;  $\rho = 1000$  kg/m<sup>3</sup>

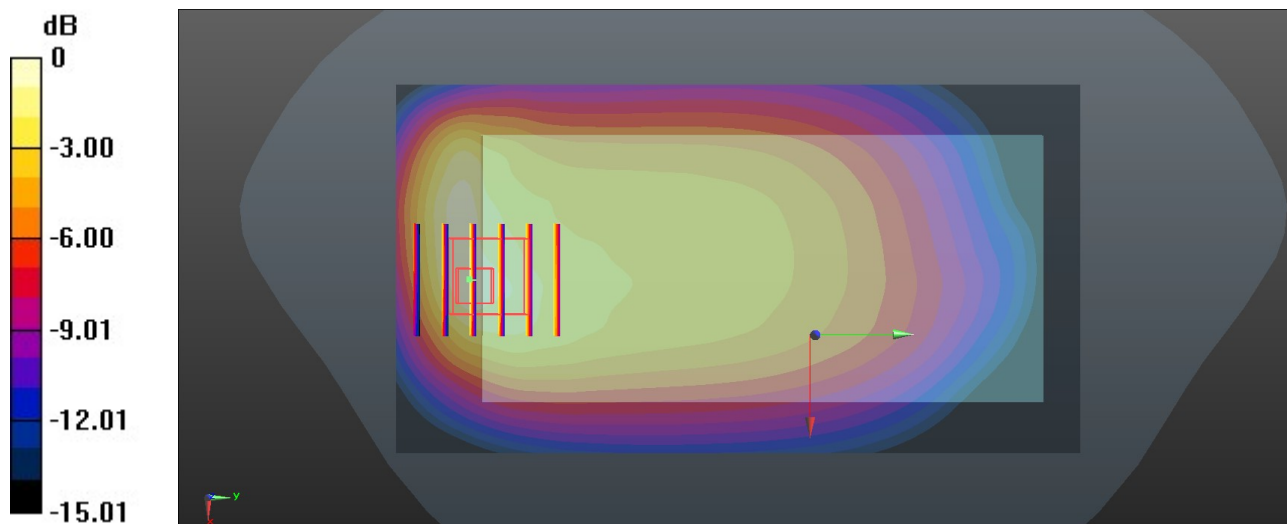
Ambient Temperature : 23.2 °C; Liquid Temperature : 22.7 °C

#### DASY5 Configuration:

- Probe: ES3DV3 - SN3279; ConvF(6.48, 6.48, 6.48); Calibrated: 2021.8.24
- Sensor-Surface: 3mm (Mechanical Surface Detection)
- Electronics: DAE4 Sn1356; Calibrated: 2021.6.1
- Phantom: SAM Twin Phantom; Type: SAM Twin; Serial: TP-1842
- Measurement SW: DASY52, Version 52.10 (4); SEMCAD X Version 14.6.14 (7483)

**Area Scan (71x131x1):** Interpolated grid: dx=1.500 mm, dy=1.500 mm  
Maximum value of SAR (interpolated) = 0.767 W/kg

**Zoom Scan (5x6x7)/Cube 0:** Measurement grid: dx=8mm, dy=8mm, dz=5mm  
Reference Value = 27.85 V/m; Power Drift = -0.17 dB  
Peak SAR (extrapolated) = 1.22 W/kg  
**SAR(1 g) = 0.647 W/kg; SAR(10 g) = 0.385 W/kg**  
Maximum value of SAR (measured) = 0.798 W/kg



0 dB = 0.798 W/kg = -0.98 dBW/kg

### 35\_LTE Band 13\_10M\_QPSK\_1RB\_0Offset\_Bottom Side\_5mm\_Ch23230

Communication System: UID 0, LTE-FDD (0); Frequency: 782 MHz; Duty Cycle: 1:1  
Medium: HSL\_750 Medium parameters used:  $f = 782$  MHz;  $\sigma = 0.924$  S/m;  $\epsilon_r = 41.655$ ;  $\rho = 1000$  kg/m<sup>3</sup>

Ambient Temperature : 23.2 °C; Liquid Temperature : 22.7 °C

#### DASY5 Configuration:

- Probe: ES3DV3 - SN3279; ConvF(6.48, 6.48, 6.48); Calibrated: 2021.8.24
- Sensor-Surface: 3mm (Mechanical Surface Detection)
- Electronics: DAE4 Sn1356; Calibrated: 2021.6.1
- Phantom: SAM Twin Phantom; Type: SAM Twin; Serial: TP-1842
- Measurement SW: DASY52, Version 52.10 (4); SEMCAD X Version 14.6.14 (7483)

**Area Scan (41x81x1):** Interpolated grid: dx=1.500 mm, dy=1.500 mm

Maximum value of SAR (interpolated) = 1.10 W/kg

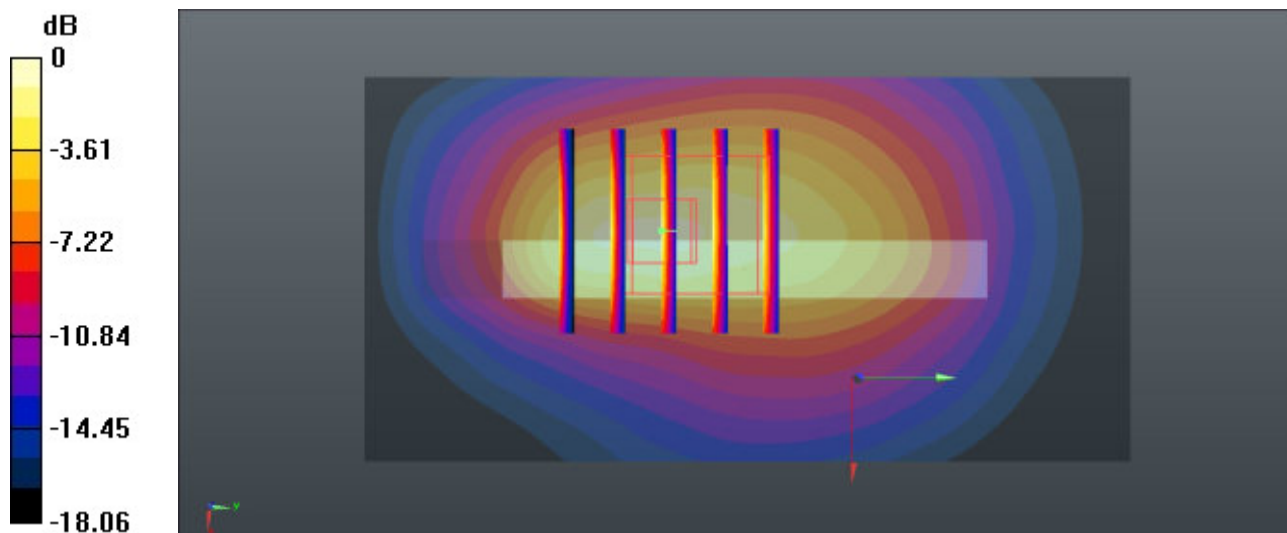
**Zoom Scan (5x5x7)/Cube 0:** Measurement grid: dx=8mm, dy=8mm, dz=5mm

Reference Value = 36.08 V/m; Power Drift = -0.07 dB

Peak SAR (extrapolated) = 2.28 W/kg

**SAR(1 g) = 0.971 W/kg; SAR(10 g) = 0.475 W/kg**

Maximum value of SAR (measured) = 1.36 W/kg



0 dB = 1.36 W/kg = 1.34 dBW/kg