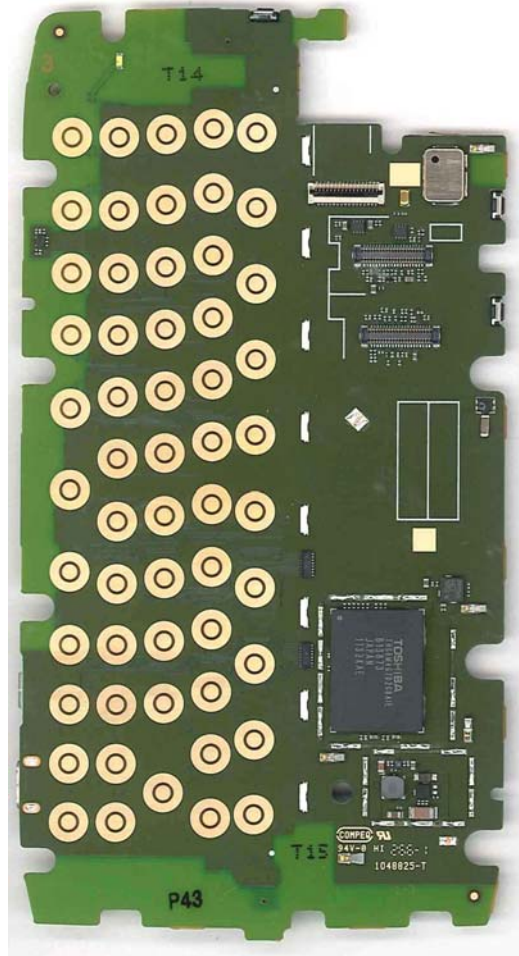
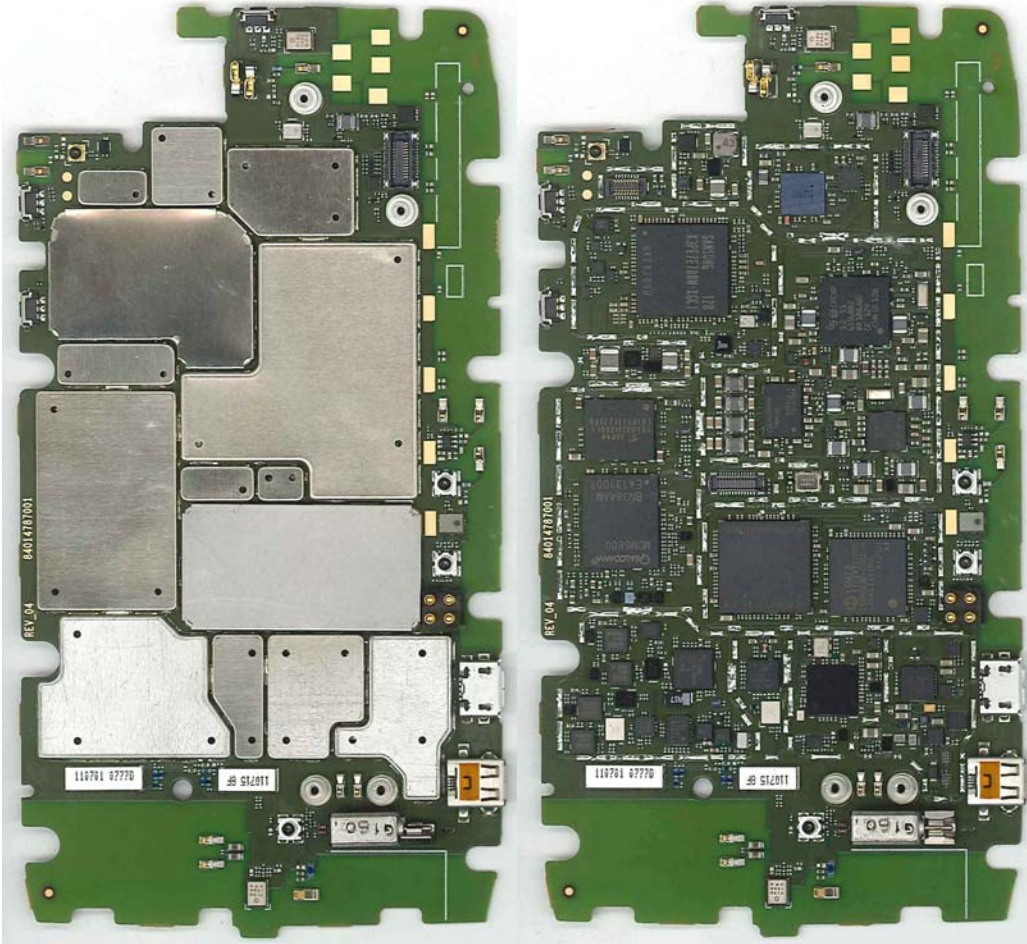


Main Board Top  
With Shields



Main Board Top  
Without Shields

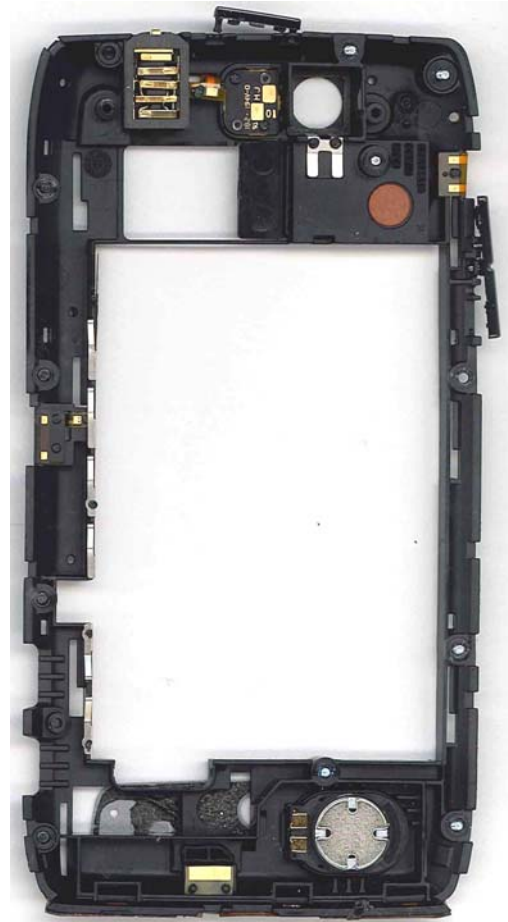


Main Board Bottom  
With Shields

Main Board Bottom  
Without Shields



Rear Housing and Main Board Removed



Inside Rear Housing



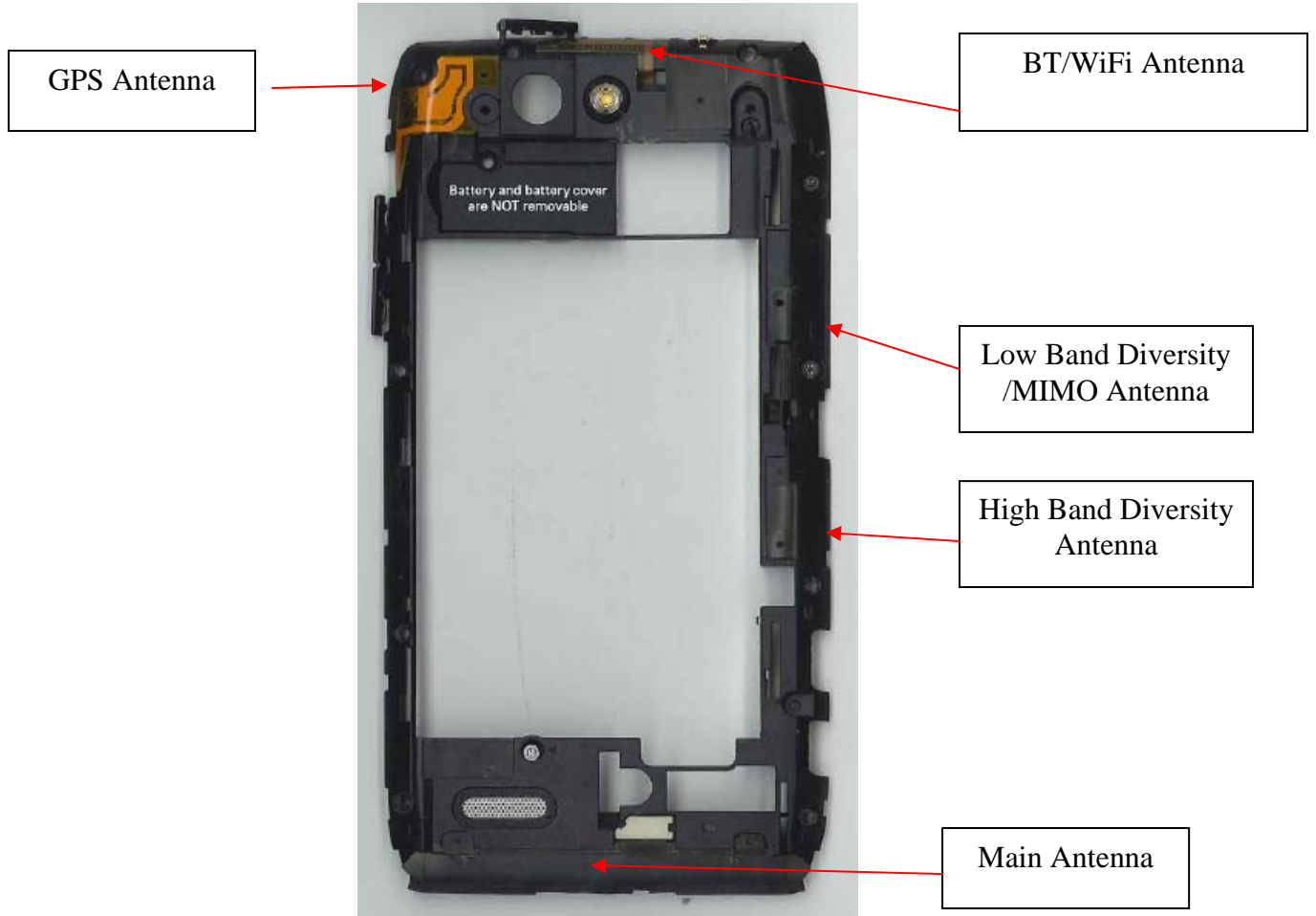
Base Assembly – Keypad Removed



Display Slide Assembly Front



Rear Housing and Main Board Removed



Rear Housing

NOTE: Black coverlay is used on the Main, High Band Diversity, and Low Band Diversity antennas.



INDUCTIVE BATTERY CHARGING DOOR, AND  
EMBEDDED PICK-UP COIL



PC BOARD (COMPONENT SIDE, WITH AND WITHOUT  
SHIELDS)



PC BOARD (CONTACT SIDE)