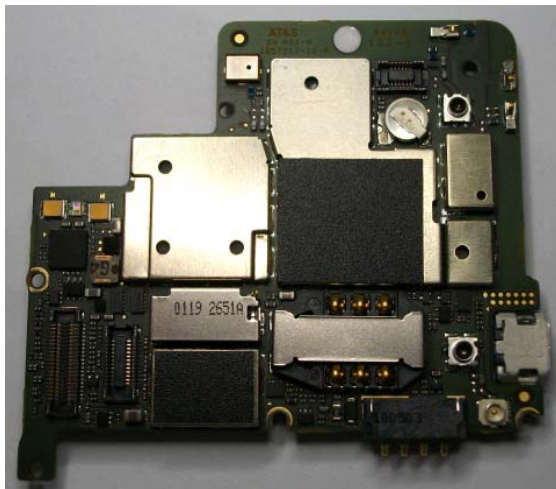


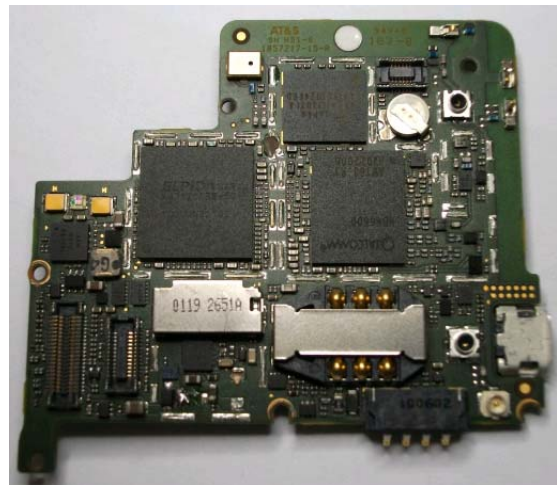
Front of Main PCB
with Shield Can



Front of Main PCB
without Shield Can



Back of Main PCB
with Shield Can



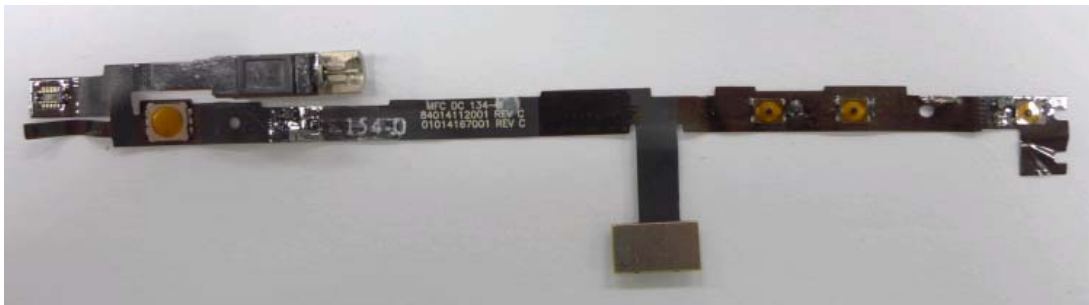
Back of Main PCB
without Shield Can



Front of Audio PCB



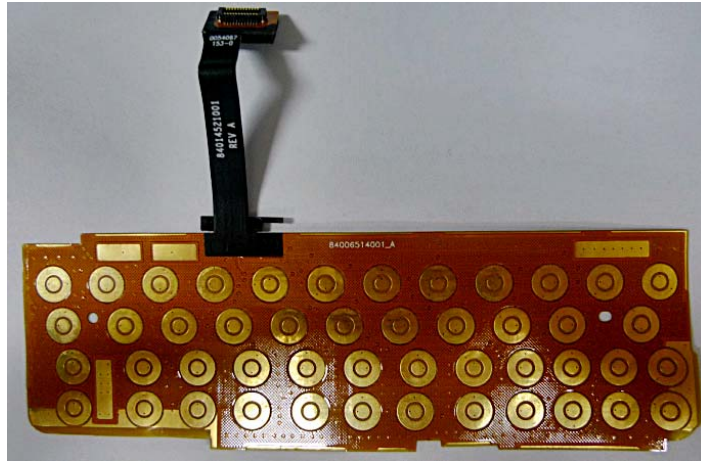
Back of Audio PCB



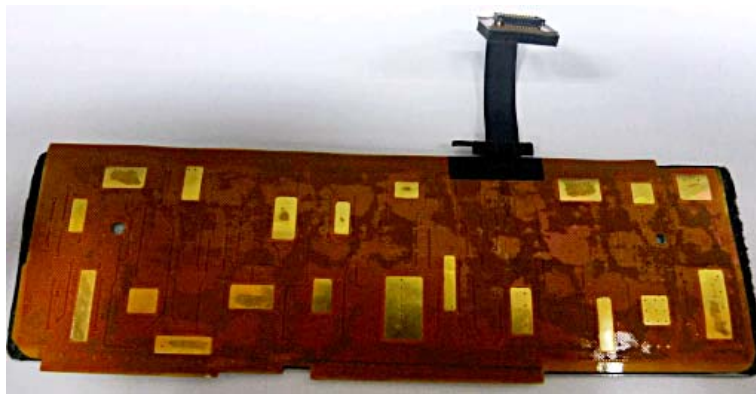
Front of Sidekey PCB



Back of Sidekey PCB



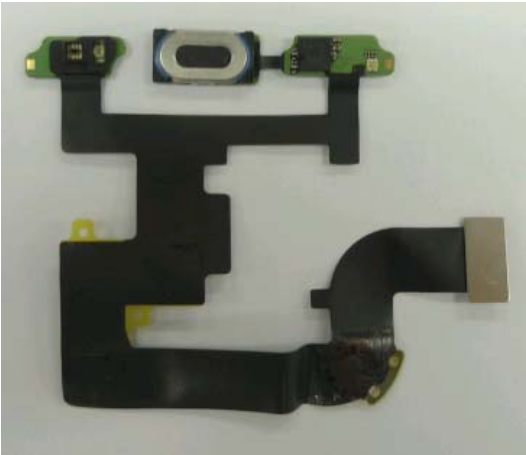
Front of Keypad PCB



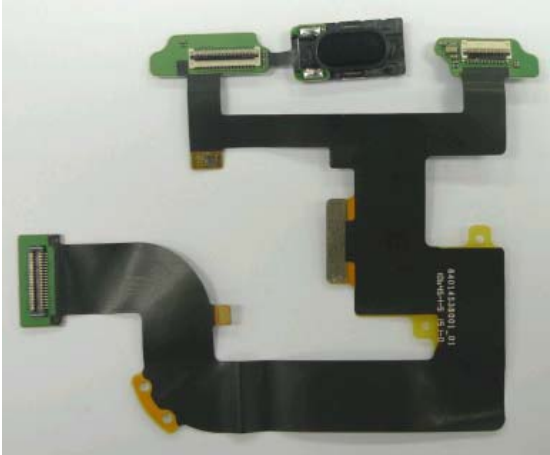
Back of Keypad PCB



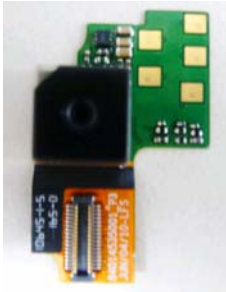
Front of Keypad Assembly



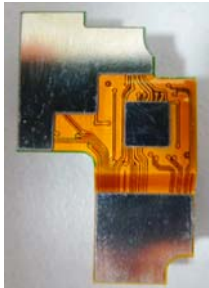
Front of Dynamic Slider



Back of Dynamic Slider



Front of Imager



Back of Imager



Front View of Assembly



Back View of Assembly