



MOTOROLA

Portable Cellular Phone SAR Test Report

Tests Requested By: Motorola Mobility, Inc.
600 N. US Highway 45
Libertyville, IL 60048

Test Report #: 24078-1
Date of Report: Oct-06-2010
Date of Test: Sep-20-2010 to Oct-05-2010
FCC ID #: IHDP56LM1
Generic Name: N/A

Test Laboratory: Motorola Mobility, Inc. - Product Safety & Compliance Laboratory
600 N. US Highway 45
Libertyville, IL 60048

Report Author: Thomas Knipple
Senior RF Engineer

Accreditation: This laboratory is accredited to ISO/IEC 17025-2005 to perform the following tests:



Testing Laboratory
No. 2404

Tests:
Electromagnetic Specific Absorption Rate

Procedures:
IEC 62209-1
RSS-102
IEEE 1528 - 2003
FCC OET Bulletin 65 (including Supplement C)
Australian Communications Authority Radio
Communications (Electromagnetic Radiation – Human
Exposure) Standard 2003
CENELEC EN 50360
ARIB Std. T-56 (2002)

On the following products or types of products:

Wireless Communications Devices (Examples): Two Way Radios; Portable Phones (including Cellular, Licensed Non-Broadcast and PCS); Low Frequency Readers; and Pagers

Statement of Compliance:

Motorola declares under its sole responsibility that the portable cellular telephone model to which this declaration relates, is in conformity with the appropriate General Population/Uncontrolled RF exposure standards, recommendations and guidelines (FCC 47 CFR §2.1093) as well as with CENELEC en50360:2001 and ANSI / IEEE C95.1. It also declares that the product was tested in accordance with IEEE 1528 / CENELEC EN62209-1 (2006) / IEC 62209-2 (2010-03), as well as other appropriate measurement standards, guidelines and recommended practices. Any deviations from these standards, guidelines and recommended practices are noted below:

(none)

©Motorola, Inc. 2010

This test report shall not be reproduced except in full, without written approval of the laboratory. The results and statements contained herein relate only to the items tested. The names of individuals involved may be mentioned only in connection with the statements or results from this report. Motorola encourages all feedback, both positive and negative, on this test report.

Table of Contents

1. Introduction	3
2. Description of the Device Under Test	4
2.1 Antenna description	4
2.2 Device description	5
3. Test Equipment Used	6
3.1 Dosimetric System	6
3.2 Additional Equipment	6
4. Electrical parameters of the tissue simulating liquid	7
5. System Accuracy Verification	8
6. Test Results	9
6.1 Head Adjacent Test Results	10
6.2 Dispatch/Push-to-Talk Test Results	13
6.3 Body Worn Test Results	15
References	19
Appendix 1: SAR distribution comparison for the system accuracy verification	
Appendix 2: SAR distribution plots for Phantom Head Adjacent Use	
Appendix 3: SAR distribution plots for Dispatch/Push-to-Talk Use	
Appendix 4: SAR distribution plots for Body Worn Configurations	
Appendix 5: Probe Calibration Certificates	
Appendix 6: Measurement Uncertainty Budget	
Appendix 7: Dipole Characterization Certificates	

1. Introduction

The Motorola Mobile Devices Business Product Safety Laboratory has performed measurements of the maximum potential exposure to the user of the portable cellular phone covered by this test report. The Specific Absorption Rate (SAR) of this product was measured. The portable cellular phone was tested in accordance with [1], [4] and [5]. The SAR values measured for the portable cellular phone are below the maximum recommended levels of 1.6 W/kg in a 1 g average set in [3] and 2.0 W/kg in a 10 g average set in [2].

For ICNIRP (10g), the final stand-alone SAR readings for this phone are 0.33 W/kg for head-adjacent use, 0.42 W/kg for dispatch use, and 0.54 W/kg for body-worn use. For ANSI / IEEE C95.1 (1 g), the final stand-alone SAR readings for this phone are 0.53 W/kg for head-adjacent use, 0.58 W/kg for dispatch use, and 0.76 W/kg for body-worn use. These measurements were performed using a Dasy4™ v4.7 system manufactured by Schmid & Partner Engineering AG (SPEAG), of Zurich Switzerland.

2. Description of the Device Under Test

2.1 Antenna description

Antenna for 800/900 MHz Bands

Type	Internal	
Location	Bottom of Transceiver	
Dimensions	Length	42 mm
	Width	9 mm

Antenna for Bluetooth

Type	Internal	
Location	Bottom-Right Side of Transceiver	
Dimensions	Length	14 mm
	Width	4.5 mm

2.2 Device description

Table 1: Information for the Device Under Test

Serial number	364VLN8GX8 (All SAR testing)					
	364VLN8GXD (conducted power measurements)					
Mode(s) of Operation	800 iDEN (Interconnect / Dispatch)	800 iDEN (Packet Data)	900 iDEN (Interconnect/ Dispatch)	900 iDEN (Packet Data)	MOTotalk (Dispatch)	Bluetooth
Modulation Mode(s)	M16-QAM	M64-QAM, M16-QAM, QPSK	M16-QAM	M64-QAM, M16-QAM, QPSK	8FSK	GFSK
Maximum Output Power Setting	28.06 dBm		28.06 dBm		28.80 dBm	10.0 dBm
Duty Cycle	2:6 / 1:6	81:120	2:6 / 1:6	81:120	114:120	1:1
Transmitting Frequency Range(s)	806.0125 – 824.9875 MHz		896.01875 – 901.98125 MHz		902.525 – 927.475 MHz	2400.0 – 2483.5 MHz
Production Unit or Identical Prototype (47 CFR §2.908)	Identical Prototype					
Device Category	Portable					
RF Exposure Limits	General Population / Uncontrolled					

The Device Under Test (DUT) is a digital multi-service data-capable device that employs time division multiplexing (TDMA) with duty cycles of 16.67% (Dispatch), 16.67% or 33.00% (Interconnect or Circuit Data), and up to 67.50% (Packet Data) operation. Possible modulation formats are QPSK, M16-QAM, or M64-QAM.

All voice modes employ M16-QAM modulation and are interleaved as 1:6 (for Dispatch or Interconnect) or 1:3 (Interconnect only). Split 1:3 Interconnect is operated at 16.67% duty cycle, but because there will be two pulses in each 90 ms frame, the overall interleave is 2:6.

Data transmissions employ QPSK, M16-QAM, or M64-QAM modulations and have a maximum duty cycle of 67.50% (Packet Data). Packet Data operation is possible with and without connection to an external data device (via data cable or Bluetooth link).

All iDEN modes (Interconnect, Dispatch, and Data) are available in both the 800 and 900 MHz SMR bands, and are also supported in the Narrowband PCS band.

This device also possesses MOTotalk, which is a Part 15 service employing Frequency Hopping Spread Spectrum (FHSS) technology in the 900 MHz ISM band. MOTotalk emissions have a duty cycle of 95% and use 8FSK modulation. Only Dispatch operation is possible when operating in this mode. The unit may be used at the abdomen in this mode (with applicable audio accessories) or held in front of the face. The low-audio earpiece mode has been locked out in software.

3. Test Equipment Used

3.1 Dosimetric System

The Motorola Mobile Devices Business Product Safety & Compliance Laboratory utilizes a Dosimetric Assessment System (Dasy4™ v4.7) manufactured by Schmid & Partner Engineering AG (SPEAG™), of Zurich Switzerland. All the SAR measurements are taken within a shielded enclosure. The overall 10 g RSS uncertainty of the measurement system is $\pm 10.8\%$ (K=1) with an expanded uncertainty of $\pm 21.6\%$ (K=2). The overall 1 g RSS uncertainty of the measurement system is $\pm 11.1\%$ (K=1) with an expanded uncertainty of $\pm 22.2\%$ (K=2). The measurement uncertainty budget is given in Appendix 6. Per IEEE 1528, this uncertainty budget is applicable to the SAR range of 0.4 W/kg to 10 W/kg.

The list of calibrated equipment used for the measurements is shown in the following table.

Description	Serial Number	Cal Date	Cal Due Date
DASY4™ DAE V1	376	Jul-13-2010	Jul-13-2011
E-Field Probe ES3DV3	3124	Aug-11-2010	Aug-11-2011
DASY4™ DAE V1	702	May-18-2010	May-18-2011
E-Field Probe ES3DV3	3183	Jul-14-2010	Jul-14-2011
S.A.M. Phantom used for 800/900 MHz	TP-1131		
S.A.M. Phantom used for 800/900 MHz	TP-1156		
Dipole Validation Kit, DV835V2	436TR	Mar-17-2010	Mar-17-2011
Dipole Validation Kit, DV835V2	420TR	Mar-17-2010	Mar-17-2011
Dipole Validation Kit, DV835V2	4d003	Jun-21-2010	Jun-21-2011

3.2 Additional Equipment

Description	Serial Number	Cal Date	Cal Due Date
Signal Generator HP8648C	3847A04822	Apr-22-2009	Apr-22-2011
Power Meter E4419B	GB39511082	Apr-24-2009	Apr-24-2011
Power Sensor #1 - E9301A	US39210915	Dec-04-2009	Dec-04-2010
Power Sensor #2 - E9301A	US39210916	Nov-16-2009	Nov-16-2010
Signal Generator HP8648C	3847A04810	Oct-30-2009	Oct-30-2011
Power Meter E4419B	GB39511087	Dec-22-2009	Dec-22-2011
Power Sensor #1 - E9301A	US39211007	Dec-04-2009	Dec-04-2010
Power Sensor #2 - E9301A	US39211008	Dec-04-2009	Dec-04-2010
Network Analyzer HP8753ES	US39172529	Jun-04-2010	Jun-04-2011
Dielectric Probe Kit HP85070C	US99360070		

4. Electrical parameters of the tissue simulating liquid

Prior to conducting SAR measurements, the relative permittivity, ϵ_r , and the conductivity, σ , of the tissue simulating liquids were measured with a HP85070 Dielectric Probe Kit. These values, along with the temperature of the simulated tissue are shown in the table below. The recommended limits for permittivity and conductivity are also shown. A mass density of $\rho = 1 \text{ g/cm}^3$ was entered into the system in all the cases. It can be seen that the measured parameters are within tolerance of the recommended limits specified in [1] and [5].

f (MHz)	Tissue type	Limits / Measured	Dielectric Parameters		
			ϵ_r	σ (S/m)	Temp ($^{\circ}\text{C}$)
815	Head	Measured Sep-20-2010	42.0	0.90	21.2
		Recommended Limits	41.6 $\pm 5\%$	0.898 $\pm 5\%$	18-25
	Body	Measured Sep-20-2010	54.6	0.98	21.1
		Recommended Limits	55.3 $\pm 5\%$	0.968 $\pm 5\%$	18-25
899	Head	Measured Sep-30-2010	41.8	0.96	19.9
		Recommended Limits	41.5 $\pm 5\%$	0.97 $\pm 5\%$	18-25
	Body	Measured Sep-23-2010	53.4	1.06	21.0
		Recommended Limits	55.0 $\pm 5\%$	1.05 $\pm 5\%$	18-25
915	Head	Measured Oct-05-2010	40.6	0.99	19.0
		Recommended Limits	41.47 $\pm 5\%$	0.98 $\pm 5\%$	18-25
	Body	Measured Oct-04-2010	54.3	1.08	19.1
		Recommended Limits	54.97 $\pm 5\%$	1.06 $\pm 5\%$	18-25

The list of ingredients and the percent composition used for the simulated tissues are indicated in the table below.

Ingredient	835 MHz / 900 MHz Head	835 MHz / 900 MHz Body	1800 MHz / 1900 MHz Head	1800 MHz / 1900 MHz Body	2450 MHz Head	2450 MHz Body
Sugar	57	44.9	--	--	--	--
DGBE	--	--	47	30.8	--	30
Diacetin	--	--	--	--	51	--
Water	40.45	53.06	52.62	68.8	48.75	70
Salt	1.45	0.94	0.38	0.4	0.15	--
HEC	1	1	--	--	--	--
Bact.	0.1	0.1	--	--	0.1	--

5. System Accuracy Verification

A system accuracy verification of the DASY4™ was performed using the measurement equipment listed in Section 3.1. The daily system accuracy verification occurs within the flat section of the SAM phantom.

A SAR measurement was performed to verify the measured SAR was within $\pm 10\%$ from the target SAR indicated in Appendix 7. These frequencies are within $\pm 10\%$ of the compliance test mid-band frequency as required in [1] and [5]. The test was conducted on the same days as the measurement of the DUT. Recommended limits for permittivity and conductivity, specified in [5], are shown in the table below. The obtained results from the system accuracy verification are also displayed in the table below. SAR values are normalized to 1 W forward power delivered to the dipole. It is seen that the system is operating within its specification, as the results are within acceptable tolerance of the reference values. The distributions of SAR compare well with those of the reference measurements (see Appendix 1). The tissue stimulant depth was verified to be 15.0 cm \pm 0.5 cm. Z-axis scans showing the SAR penetration are also included in Appendix 1.

f (MHz)	Description	SAR (W/kg), 1 gram	Dielectric Parameters		Ambient Temp (°C)	Tissue Temp (°C)
			ϵ_r	σ (S/m)		
835	Measured, Sep-20-2010	9.80	41.7	0.91	20.5	20.8
	Measured, Sep-23-2010	9.85	41.4	0.91	20.1	20.9
	Measured, Sep-30-2010	9.40	42.7	0.89	20.0	19.9
	Recommended Limits	9.59	41.5 \pm 5%	0.90 \pm 5%	18-25	18-25
	Measured, Oct-04-2010	9.60	41.6	0.91	20.0	19.2
	Measured, Oct-05-2010	9.75	41.5	0.91	20.1	19.0
	Recommended Limits	9.54	41.5 \pm 5%	0.90 \pm 5%	18-25	18-25

The following probe conversion factors were used on the E-Field probe(s) used for the system accuracy verification measurements:

Description	Serial Number	f (MHz)	Conversion Factor	Cal Cert pg #
E-Field Probe ES3DV3	3124	835	5.89	5 of 11
E-Field Probe ES3DV3	3183	835	6.11	5 of 11

6. Test Results

The test sample was operated using an actual transmission through a base station simulator. The base station simulator was set up to the proper channel, transmitter power level and transmit mode of operation. The phone was tested in the configurations stipulated in [1], [4] and [5]. The phone was positioned into these configurations using the device holder supplied with the DASY4™ SAR measurement system. The default settings for the “coarse” and “cube” scans were chosen and used for measurements. The grid spacing of the course scan was set to 15 mm or less as shown in the SAR plots included in Appendices 2, 3, and 4. Please refer to the DASY4™ manual for additional information on SAR scanning procedures and algorithms used.

The Cellular Phone model covered by this report has the following battery options:
 Model SNN5823A - 1130 mAH Battery

The battery with the highest capacity is the SNN5823A. This battery was used to do all of the SAR testing. The phone was placed in the SAR measurement system with a fully charged battery.

Evaluation of Bluetooth Mode

Per "SAR Evaluation Considerations for Handsets with Multiple Transmitters and Antennas" (FCC KDB 648474), the necessity of stand-alone and simultaneous SAR testing was evaluated for the Bluetooth transmitter of the device under test. Note that Bluetooth mode is not intended for use in configurations against the head, and this evaluation considers only the body-worn configurations.

The conditions under which the device under test can be excluded from stand-alone and simultaneous SAR testing, per FCC KDB 648474, are summarized as follows:

Table 1 – Output Power Thresholds for Unlicensed Transmitters

	2.45	5.15 - 5.35	5.47 - 5.85	GHz
P_{ref}	12	6	5	mW

Device output power should be rounded to the nearest mW to compare with values specified in this table.

Table 2 – Summary of SAR Evaluation Requirements for a Cell Phone with Multiple Transmitters

	Individual Transmitter	Simultaneous Transmission
Licensed Transmitters	Routine evaluation required.	SAR not required: Unlicensed only
Unlicensed Transmitters	When there is no simultaneous transmission – o output ≤ 60 f SAR not required o output > 60 f stand-alone SAR required When there is simultaneous transmission – Stand-alone SAR not required when o output $\leq 2 \cdot P_{ref}$ and antenna is ≥ 5.0 cm from other antennas o output $\leq P_{ref}$ and antenna is ≥ 2.5 cm from other antennas o output $\leq P_{ref}$ and antenna is < 2.5 cm from other antennas, each with either output power $\leq P_{ref}$ or 1-g SAR < 1.2 W/kg Otherwise stand-alone SAR is required When stand-alone SAR is required o test SAR on highest output channel for each wireless mode and exposure condition o if SAR for highest output channel is $> 50\%$ of SAR limit, evaluate all channels according to normal procedures	o when stand-alone 1-g SAR is not required and antenna is ≥ 5 cm from other antennas Licensed & Unlicensed o when the sum of the 1-g SAR is < 1.6 W/kg for all simultaneous transmitting antennas o when SAR to peak location separation ratio of simultaneous transmitting antenna pair is < 0.3 SAR required: Licensed & Unlicensed antenna pairs with SAR to peak location separation ratio ≥ 0.3 ; test is only required for the configuration that results in the highest SAR in stand-alone configuration for each wireless mode and exposure condition Note: simultaneous transmission exposure conditions for head and body can be different for different style phones; therefore, different test requirements may apply

Per the highlighted criteria:

1. The highest output conducted power measured for Bluetooth on the device under test is 8.27 mW [< 12 mW]
2. The separation distance between the Bluetooth antenna and the nearest main antenna is 0.18 cm [< 2.5 cm]
3. The highest 1-g Body-Worn SAR values for primary transmitters are:
 iDEN 800 (0.16 W/kg); iDEN 900 (0.18 W/kg); MOTOtalk (0.76 W/kg) [< 1.2 W/kg]

Based on the output power of the Bluetooth transmitter, its antenna separation distance from the nearest primary antenna, and the SAR values of the primary transmitter modes, neither stand-alone nor simultaneous SAR measurements are required for the device under test. Pictorial representation of the antenna locations and separation distances are given in Exhibit 7d.

6.1 Head Adjacent Test Results

The SAR results shown in tables 1 through 4 are maximum SAR values averaged over 1 gram of phantom tissue, to demonstrate compliance to [3] and also over 10 grams of phantom tissue, to demonstrate compliance to the [6]. Also shown are the measured conducted output power levels, the temperature of the simulated tissue after the test, the measured drift and the extrapolated SAR. The exact method of extrapolation is $\text{Extrapolated SAR} = \text{Measured SAR} * 10^{(-\text{drift}/10)}$. The SAR reported at the end of the measurement process by the DASY4™ measurement system can be scaled up by the measured drift to determine the SAR at the beginning of the measurement process. This is the most conservative SAR because it corresponds to the average output power at the beginning of the SAR test. This extrapolation has been done because when the DUT is operating properly it may exhibit a slump in radiated power and SAR over time. This is verified by measuring the SAR drift after the test.

The left head and right head SAR contour distributions are similar. Because of this similarity, the cheek/touch and 15° tilt test conditions with the highest SAR values in each band are indicated as bold numbers in the following tables and are included in Appendix 2. All other test conditions measured lower SAR values than those included in Appendix 2.

The SAR measurements were performed using the SAM phantoms listed in section 3.1. Since the same phantoms and simulated tissue were used for the system accuracy verification and the device SAR measurements, the Z-axis scans included in Appendix 1 are applicable for verification of simulated tissue depth to be 15.0 cm ± 0.5 cm.

The following probe conversion factors were used on the E-Field probe(s) used for head-adjacent measurements:

Description	Serial Number	f (MHz)	Conversion Factor	Cal Cert pg #
E-Field Probe ES3DV3	3124	835	5.89	5 of 11
E-Field Probe ES3DV3	3183	835	6.11	5 of 11

Left Head Cheek Position; Voice Interconnect, 1:3 Mode								
Mode/ Band	f (MHz)	Conducted Output Power (dBm)	Temp (°C)	Drift (dB)	10 g SAR value		1 g SAR value	
					Measured (W/kg)	Extrapolated (W/kg)	Measured (W/kg)	Extrapolated (W/kg)
iDEN 800	806.0125	28.08						
	815.5125	28.08	20.7	-0.196	0.110	0.12	0.146	0.15
	824.9875	28.06						
iDEN 900	896.01875	28.04						
	898.99375	28.03	19.7	-0.096	0.287	0.29	0.422	0.43
	901.98125	28.00						

Table 1: SAR measurement results at the highest possible output power, measured in a head cheek position against the ICNIRP and ANSI SAR Limit.

Right Head Cheek Position; Voice Interconnect, 1:3 Mode								
Mode/ Band	f (MHz)	Conducted Output Power (dBm)	Temp (°C)	Drift (dB)	10 g SAR value		1 g SAR value	
					Measured (W/kg)	Extrapolated (W/kg)	Measured (W/kg)	Extrapolated (W/kg)
iDEN 800	806.0125	28.08						
	815.5125	28.08	20.7	-0.192	0.076	0.08	0.120	0.13
	824.9875	28.06						
iDEN 900	896.01875	28.04						
	898.99375	28.03	19.7	-0.015	0.330	0.33	0.531	0.53
	901.98125	28.00						

Table 2: SAR measurement results at the highest possible output power, measured in a head cheek position against the ICNIRP and ANSI SAR Limit.

Left Head 15° Tilt Position; Voice Interconnect, 1:3 Mode								
Mode/ Band	f (MHz)	Conducted Output Power (dBm)	Temp (°C)	Drift (dB)	10 g SAR value		1 g SAR value	
					Measured (W/kg)	Extrapolated (W/kg)	Measured (W/kg)	Extrapolated (W/kg)
iDEN 800	806.0125	28.08						
	815.5125	28.08	20.7	-0.018	0.065	0.07	0.087	0.09
	824.9875	28.06						
iDEN 900	896.01875	28.04						
	898.99375	28.03	19.7	-0.011	0.177	0.18	0.242	0.24
	901.98125	28.00						

Table 3: SAR measurement results at the highest possible output power, measured in a head 15° Tilt position against the ICNIRP and ANSI SAR Limit.

Right Head 15° Tilt Position; Voice Interconnect, 1:3 Mode								
Mode/ Band	f (MHz)	Conducted Output Power (dBm)	Temp (°C)	Drift (dB)	10 g SAR value		1 g SAR value	
					Measured (W/kg)	Extrapolated (W/kg)	Measured (W/kg)	Extrapolated (W/kg)
iDEN 800	806.0125	28.08						
	815.5125	28.08	20.7	-0.311	0.038	0.04	0.050	0.05
	824.9875	28.06						
iDEN 900	896.01875	28.04						
	898.99375	28.03	19.7	0.009	0.190	0.19	0.263	0.26
	901.98125	28.00						

Table 4: SAR measurement results at the highest possible output power, measured in a head 15° Tilt position against the ICNIRP and ANSI SAR Limit.

6.2 Dispatch/Push-to-Talk Test Results

The SAR results shown in table 5 are maximum SAR values averaged over 1 gram of phantom tissue, to demonstrate compliance to [3] and also over 10 grams of phantom tissue, to demonstrate compliance to the [6]. Also shown are the measured conducted output powers, the temperature of the simulated tissue after the test, the measured drift and the extrapolated SAR. The exact method of extrapolation is $\text{Extrapolated SAR} = \text{Measured SAR} * 10^{(-\text{drift}/10)}$. The SAR reported at the end of the measurement process by the DASY4™ measurement system can be scaled up by the measured drift to determine the SAR at the beginning of the measurement process. This is the most conservative SAR because it corresponds to the average output power at the beginning of the SAR test. This extrapolation has been done because when the DUT is operating properly it may exhibit a slump in radiated power and SAR over time. This is verified by measuring the SAR drift after the test.

A full data set output of one test condition per band with the highest SAR values from the DASY™ measurement system is included as Appendix 3. The test conditions included are indicated as bold numbers in the following tables. All other test conditions measured lower SAR values than those included.

The SAR measurements were performed using the SAM phantoms listed in section 3.1. Since the same phantoms and simulated tissue were used for the system accuracy verification and the device SAR measurements, the Z-axis scans included in Appendix 1 are applicable for verification of simulated tissue depth to be 15.0 cm ± 0.5 cm.

For the purposes of these tests the DUT is commanded to the proper channel, transmitter power level and transmit mode of operation. The DUT was then placed in the SAR measurement system with a fully charged battery. The DUT was placed with the front of the device positioned at 2.5 cm from the flat portion of the SAM phantom, as per Supplement C 01-01, with flip both open and closed.

The following probe conversion factors were used on the E-Field probe(s) used for the Dispatch/Push-To-Talk measurements:

Description	Serial Number	f (MHz)	Conversion Factor	Cal Cert pg #
E-Field Probe ES3DV3	3124	835	5.89	5 of 11
E-Field Probe ES3DV3	3183	835	6.11	5 of 11

Dispatch/Push-To-Talk, Front of Phone 25 mm from Phantom with Flip Open; Dispatch 1:6 Mode for iDEN, 114:120 Mode for MOTotalk								
Mode/ Band	f (MHz)	Conducted Output Power (dBm)	Temp (°C)	Drift (dB)	10 g SAR value		1 g SAR value	
					Measured (W/kg)	Extrapolated (W/kg)	Measured (W/kg)	Extrapolated (W/kg)
iDEN 800	806.0125	28.06						
	815.5125	28.06	20.8	-0.108	0.057	0.06	0.076	0.08
	824.9875	28.07						
iDEN 900	896.01875	28.05						
	898.99375	28.04	19.7	-0.029	0.118	0.12	0.164	0.17
	901.98125	28.01						
MOTotalk	902.525	28.95						
	915.525	28.93	18.8	-0.080	0.416	0.42	0.573	0.58
	927.475	28.93						

Table 5: SAR measurement results at the highest possible output power, measured in a Push-To-Talk position against the ICNIRP and ANSI SAR Limit.

Dispatch/Push-To-Talk, Front of Phone 25 mm from Phantom with Flip Closed; Dispatch 1:6 Mode for iDEN, 114:120 Mode for MOTotalk								
Mode/ Band	f (MHz)	Conducted Output Power (dBm)	Temp (°C)	Drift (dB)	10 g SAR value		1 g SAR value	
					Measured (W/kg)	Extrapolated (W/kg)	Measured (W/kg)	Extrapolated (W/kg)
iDEN 800	806.0125	28.06						
	815.5125	28.06	20.8	0.042	0.063	0.06	0.087	0.09
	824.9875	28.07						
iDEN 900	896.01875	28.05						
	898.99375	28.04	19.7	0.083	0.069	0.07	0.097	0.10
	901.98125	28.01						
MOTotalk	902.525	28.95						
	915.525	28.93	18.8	-0.115	0.330	0.34	0.462	0.47
	927.475	28.93						

Table 6: SAR measurement results at the highest possible output power, measured in a Push-To-Talk position against the ICNIRP and ANSI SAR Limit.

6.3 Body Worn Test Results

The SAR results shown in tables 7 through 11 are maximum SAR values averaged over 1 gram of phantom tissue, to demonstrate compliance to [3] and also over 10 grams of phantom tissue, to demonstrate compliance to [6]. Also shown are the measured conducted output power levels, the temperature of the test facility during the test, the temperature of the tissue simulate after the test, the measured drift and the extrapolated SAR. The exact method of extrapolation is $\text{Extrapolated SAR} = \text{Measured SAR} * 10^{(-\text{drift}/10)}$. The SAR reported at the end of the measurement process by the DASY4™ measurement system can be scaled up by the measured drift to determine the SAR at the beginning of the measurement process. This is the most conservative SAR because it corresponds to the average output power at the beginning of the SAR test. This extrapolation has been done because when the DUT is operating properly it may exhibit a slump in radiated power and SAR over time. This is verified by measuring the SAR drift after the test.

The test conditions that produced the highest SAR values in each band are indicated as bold numbers in the following tables and are included in Appendix 4. All other test conditions measured lower SAR values than those included in Appendix 4.

A “flat” phantom was for the body-worn tests. This “flat” phantom is made out of 1” thick natural High Density Polyethylene with a thickness at the bottom equal to 2.0 mm. It measures 52.7 cm(long) x 26.7 cm(wide) x 21.2 cm(tall). The tissue stimulant depth was verified to be 15.0 cm ± 0.5 cm. The same device holder described in section 6 was used for positioning the phone.

The device was tested per the Supplement C testing guidelines for devices that do not have body-worn accessories. A separation distance of 25 mm between the device and the flat phantom was used for testing body-worn SAR. The device was tested with the front and back of the device facing the phantom. Both sides of the device were tested for Body SAR for the purpose of including the SAR evaluation for body-worn accessories that support the device with the front side facing the user. The cellular phone was tested with a headset connected to the device for all body-worn SAR measurements.

The cellular phone was also tested in data mode operations. For these tests, a separation distance of 25 mm between the device and the flat phantom was used.

Additional functional accessories were divided into two categories, the ones with metal components and the ones with non-metal components. For non-metallic component accessories, testing was performed on the accessory that displayed the closest proximity to the flat phantom. Each metallic component accessory, if any, was checked for uniqueness of metal component so that each is tested with the device. If multiple accessories shared an identical metal component, only the accessory that dictates the closest spacing to the body was tested.

There is one body-worn accessory available for this phone:
A plastic holster and belt clip: Model NNTN9015A

The plastic holster causes closer proximity and does differ in metal components, and thus was used for SAR measurements. The device was tested with the holster in the worst-case allowable SAR position, mode, and channel configuration from the previously described body-worn testing.

The following probe conversion factors were used on the E-Field probe(s) used for the body-worn measurements:

Description	Serial Number	f (MHz)	Conversion Factor	Cal Cert pg #
E-Field Probe ES3DV3	3124	835	5.86	5 of 11
E-Field Probe ES3DV3	3183	835	6.15	5 of 11

Body-Worn; Front of Phone 25 mm from Phantom <i>Voice Interconnect 1:3 Mode for iDEN, 114:120 Mode for MOTotalk</i>								
Mode/ Band	f (MHz)	Conducted Output Power (dBm)	Temp (°C)	Drift (dB)	10 g SAR value		1 g SAR value	
					Measured (W/kg)	Extrapolated (W/kg)	Measured (W/kg)	Extrapolated (W/kg)
iDEN 800	806.0125	28.08						
	815.5125	28.08	21.0	-0.209	0.061	0.06	0.083	0.09
	824.9875	28.06						
iDEN 900	896.01875	28.04						
	898.99375	28.03	21.0	-0.612	0.030	0.04	0.044	0.05
	901.98125	28.00						
MOTOtalk	902.525	28.95						
	915.525	28.93	19.0	-0.068	0.260	0.26	0.360	0.37
	927.475	28.93						

Table 7: SAR measurement results at the highest possible output power, measured in a body-worn position against the ICNIRP and ANSI SAR Limit.

Body-Worn; Front of Phone 25 mm from Phantom <i>Packet Data 81:120 Mode for iDEN</i>								
Mode/ Band	f (MHz)	Conducted Output Power (dBm)	Temp (°C)	Drift (dB)	10 g SAR value		1 g SAR value	
					Measured (W/kg)	Extrapolated (W/kg)	Measured (W/kg)	Extrapolated (W/kg)
iDEN 800	806.0125	27.95						
	815.5125	27.93	21.0	-0.011	0.070	0.07	0.097	0.10
	824.9875	27.79						
iDEN 900	896.01875	27.99						
	898.99375	27.99	21.0	-0.338	0.100	0.11	0.140	0.15
	901.98125	27.96						

Table 8: SAR measurement results at the highest possible output power, measured in a body-worn position against the ICNIRP and ANSI SAR Limit.

Body-Worn; Back of Phone 25 mm from Phantom								
<i>Voice Interconnect 1:3 Mode for iDEN, 114:120 Mode for MOTotalk</i>								
Mode/ Band	f (MHz)	Conducted Output Power (dBm)	Temp (°C)	Drift (dB)	10 g SAR value		1 g SAR value	
					Measured (W/kg)	Extrapolated (W/kg)	Measured (W/kg)	Extrapolated (W/kg)
iDEN 800	806.0125	28.08						
	815.5125	28.08	21.0	-0.011	0.076	0.08	0.106	0.11
	824.9875	28.06						
iDEN 900	896.01875	28.04						
	898.99375	28.03	21.0	0.034	0.128	0.13	0.176	0.18
	901.98125	28.00						
MOTOtalk	902.525	28.95						
	915.525	28.93	19.0	-0.072	0.534	0.54	0.747	0.76
	927.475	28.93						

Table 9: SAR measurement results at the highest possible output power, measured in a body-worn position against the ICNIRP and ANSI SAR Limit.

Body-Worn; Back of Phone 25 mm from Phantom								
<i>Packet Data 81:120 Mode for iDEN</i>								
Mode/ Band	f (MHz)	Conducted Output Power (dBm)	Temp (°C)	Drift (dB)	10 g SAR value		1 g SAR value	
					Measured (W/kg)	Extrapolated (W/kg)	Measured (W/kg)	Extrapolated (W/kg)
iDEN 800	806.0125	27.95						
	815.5125	27.93	21.0	-0.050	0.092	0.09	0.129	0.13
	824.9875	27.79						
iDEN 900	896.01875	27.99						
	898.99375	27.99	21.0	-0.143	0.086	0.09	0.126	0.13
	901.98125	27.96						

Table 10: SAR measurement results at the highest possible output power, measured in a body-worn position against the ICNIRP and ANSI SAR Limit.

Body-Worn with Holster NNTN9015A								
<i>Packet Data 81:120 Mode for iDEN, 114:120 Mode for MOTotalk</i>								
Mode/ Band	f (MHz)	Conducted Output Power (dBm)	Temp (°C)	Drift (dB)	10 g SAR value		1 g SAR value	
					Measured (W/kg)	Extrapolated (W/kg)	Measured (W/kg)	Extrapolated (W/kg)
iDEN 800	806.0125	28.08						
	815.5125	28.08	21.0	-0.186	0.106	0.11	0.149	0.16
	824.9875	28.06						
iDEN 900	896.01875	28.04						
	898.99375	28.03	21.0	-0.036	0.075	0.08	0.106	0.11
	901.98125	28.00						
MOTotalk	902.525	28.95						
	915.525	28.93	19.0	-0.119	0.345	0.35	0.481	0.49
	927.475	28.93						

Table 11: SAR measurement results at the highest possible output power, measured in a body-worn position against the ICNIRP and ANSI SAR Limit.

References

- [1] CENELEC, en62209-1:2006 “Human Exposure to Radio Frequency Fields From Hand - Held and Body - Mounted Wireless Communication Devices – Human Models, Instrumentation, and Procedures”
- [2] CENELEC, en50360:2001 “Product standard to demonstrate the compliance of mobile phones with the basic restrictions related to human exposure to electromagnetic fields (300 MHz – 3 GHz)”.
- [3] ANSI / IEEE, C95.1 1999 Edition “IEEE Standard for Safety Levels with Respect to Human Exposure to Radio Frequency Electromagnetic Fields, 3 kHz to 300 GHz”
- [4] FCC OET Bulletin 65 Supplement C 01-01
- [5] IEEE 1528 2003 Edition “IEEE Recommended Practice for Determining the Peak Spatial-Average Specific Absorption Rate (SAR) in the Human Head from Wireless Communications Devices: Measurement Techniques”
- [6] ICNIRP Guidelines “Guidelines for Limiting Exposure to Time-Varying Electric, Magnetic, and Electromagnetic Fields (up to 300 GHz)”
- [7] IEC 62209-2 “Human exposure to radio frequency fields from hand-held and body-mounted wireless communication devices - Human models, instrumentation, and procedures - Part 2: Procedure to determine the specific absorption rate (SAR) for wireless communication devices used in close proximity to the human body (frequency range of 30 MHz to 6 GHz)”

Appendix 1

SAR distribution comparison for the system accuracy verification

Date/Time: 9/19/2010 6:48:29 AM

Test Laboratory: Motorola - Sep-20-2010 835 MHz

DUT: Dipole 835 MHz; Type: D835V2; Serial: D835V2 - SN: 436TR; FCC ID: IHDP56LM1

Procedure Notes: 835MHz System Performance Check; Dipole Sn# 436TR; Input Power = 200 mW

Sim.Temp@meas = 20.8°C; Sim.Temp@SPC = 20.8°C; Room Temp @ SPC = 20.5°C

Communication System: CW - Dipole; Frequency: 835 MHz; Duty Cycle: 1:1

Medium: VALIDATION Only

Medium parameters used: $f = 835$ MHz; $\sigma = 0.91$ mho/m; $\epsilon_r = 41.7$; $\rho = 1000$ kg/m³

DASY4 Configuration:

- Probe: ES3DV3 - SN3124; ConvF(5.89, 5.89, 5.89); Calibrated: 8/11/2010
- Sensor-Surface: 4mm (Mechanical Surface Detection)
- Electronics: DAE4 Sn376; Calibrated: 7/13/2010
- Phantom: R#4 Sugar SAM (extended range), Rev.1 (25-Mar-05); Type: SAM v4.0; Serial: TP-1131;
- Measurement SW: DASY4, V4.7 Build 80; Postprocessing SW: SEMCAD, V1.8 Build 186

Daily SPC Check/Dipole Area Scan (4x9x1):

Measurement grid: dx=15mm, dy=15mm; Maximum value of SAR (measured) = 1.85 mW/g

Daily SPC Check/0-Degree, 5x5x7 Cube (5x5x7)/Cube 0:

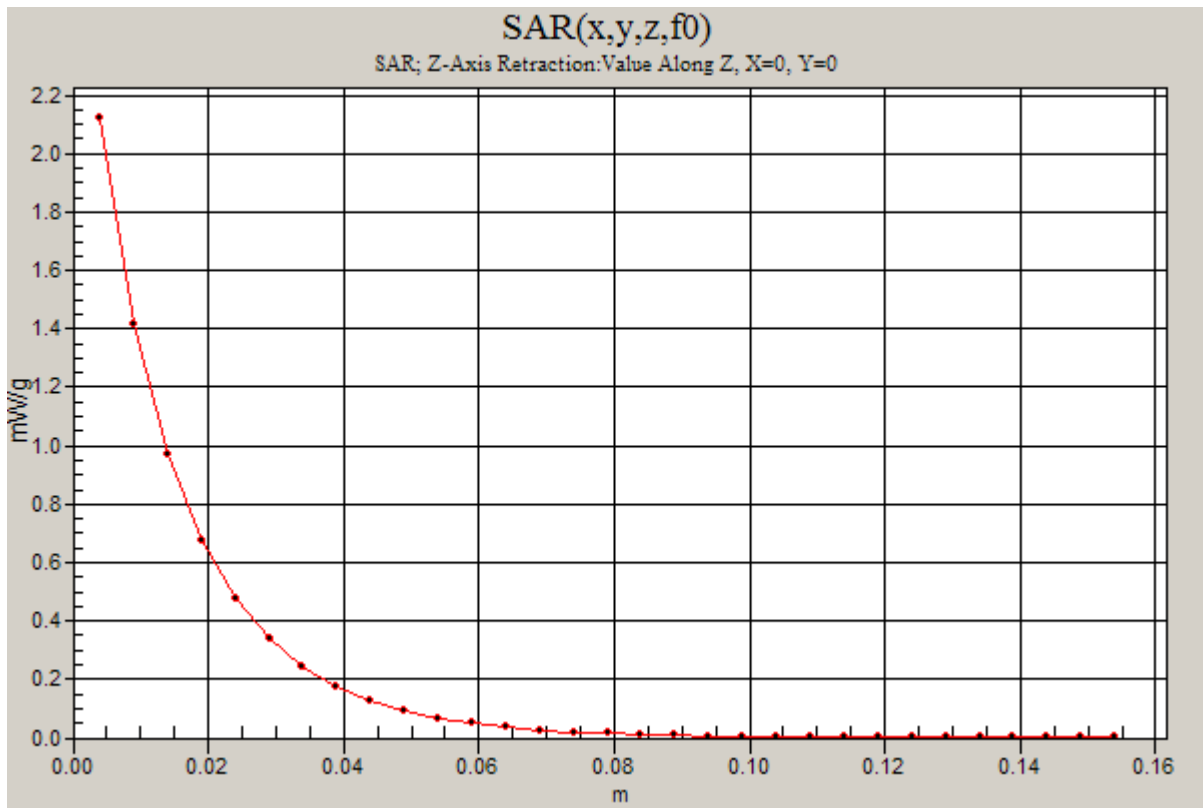
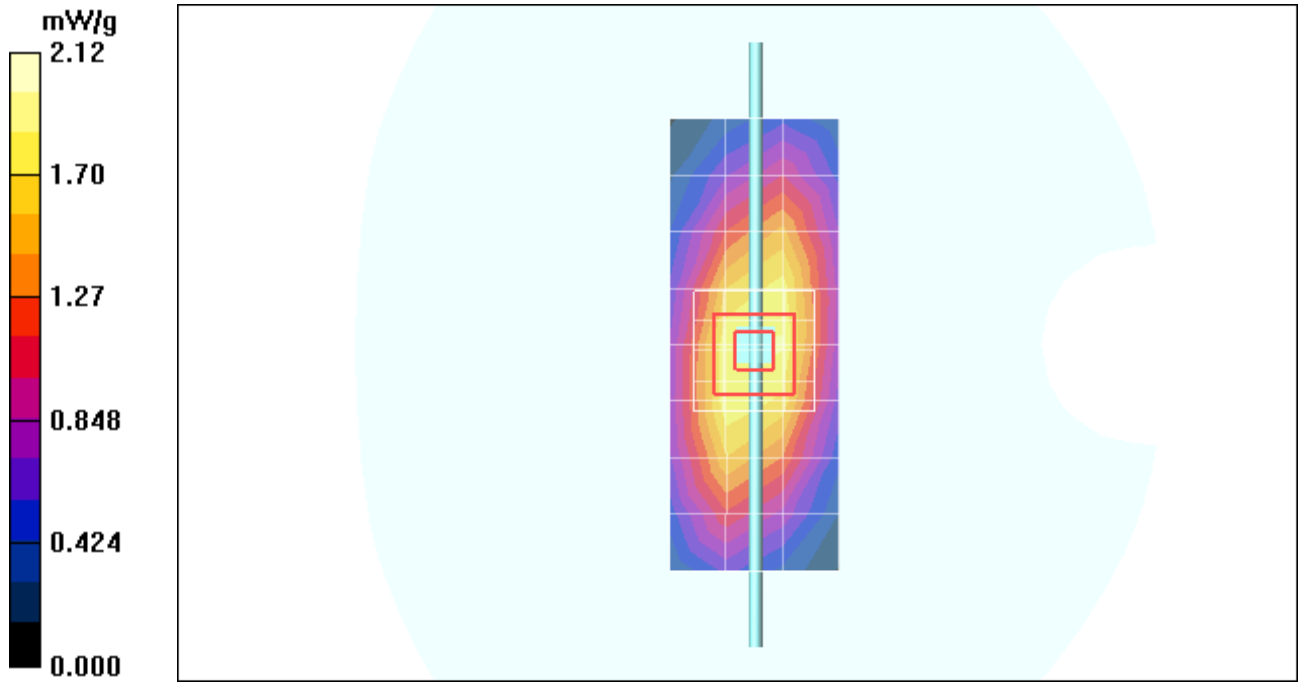
Measurement grid: dx=8mm, dy=8mm, dz=5mm

Reference Value = 48.9 V/m; Power Drift = -0.010 dB; Peak SAR (extrapolated) = 2.94 W/kg

SAR(1 g) = 1.96 mW/g; SAR(10 g) = 1.28 mW/g; Maximum value of SAR (measured) = 2.12 mW/g

Daily SPC Check/Z-Axis Retraction (1x1x31):

Measurement grid: dx=20mm, dy=20mm, dz=5mm



Date/Time: 9/23/2010 7:50:40 AM

Test Laboratory: Motorola - Sep-23-2010 835 MHz

DUT: Dipole 835 MHz; Type: D835V2; Serial: D835V2 - SN: 436TR; FCC ID: IHDP56LM1

Procedure Notes: 835 MHz System Performance Check; Dipole Sn# 436TR; Input Power = 200 mW

Sim.Temp@meas = 20.9°C; Sim.Temp@SPC = 20.9°C; Room Temp @ SPC = 20.1°C

Communication System: CW - Dipole; Frequency: 835 MHz; Duty Cycle: 1:1

Medium: VALIDATION Only

Medium parameters used: $f = 835$ MHz; $\sigma = 0.91$ mho/m; $\epsilon_r = 41.4$; $\rho = 1000$ kg/m³

DASY4 Configuration:

- Probe: ES3DV3 - SN3124; ConvF(5.89, 5.89, 5.89); Calibrated: 8/11/2010
- Sensor-Surface: 4mm (Mechanical Surface Detection)
- Electronics: DAE4 Sn376; Calibrated: 7/13/2010
- Phantom: R#4 Sugar SAM (extended range), Rev.1 (25-Mar-05); Type: SAM v4.0; Serial: TP-1131;
- Measurement SW: DASY4, V4.7 Build 80; Postprocessing SW: SEMCAD, V1.8 Build 186

Daily SPC Check/Dipole Area Scan (4x9x1):

Measurement grid: dx=15mm, dy=15mm; Maximum value of SAR (measured) = 1.90 mW/g

Daily SPC Check/0-Degree, 5x5x7 Cube (5x5x7)/Cube 0:

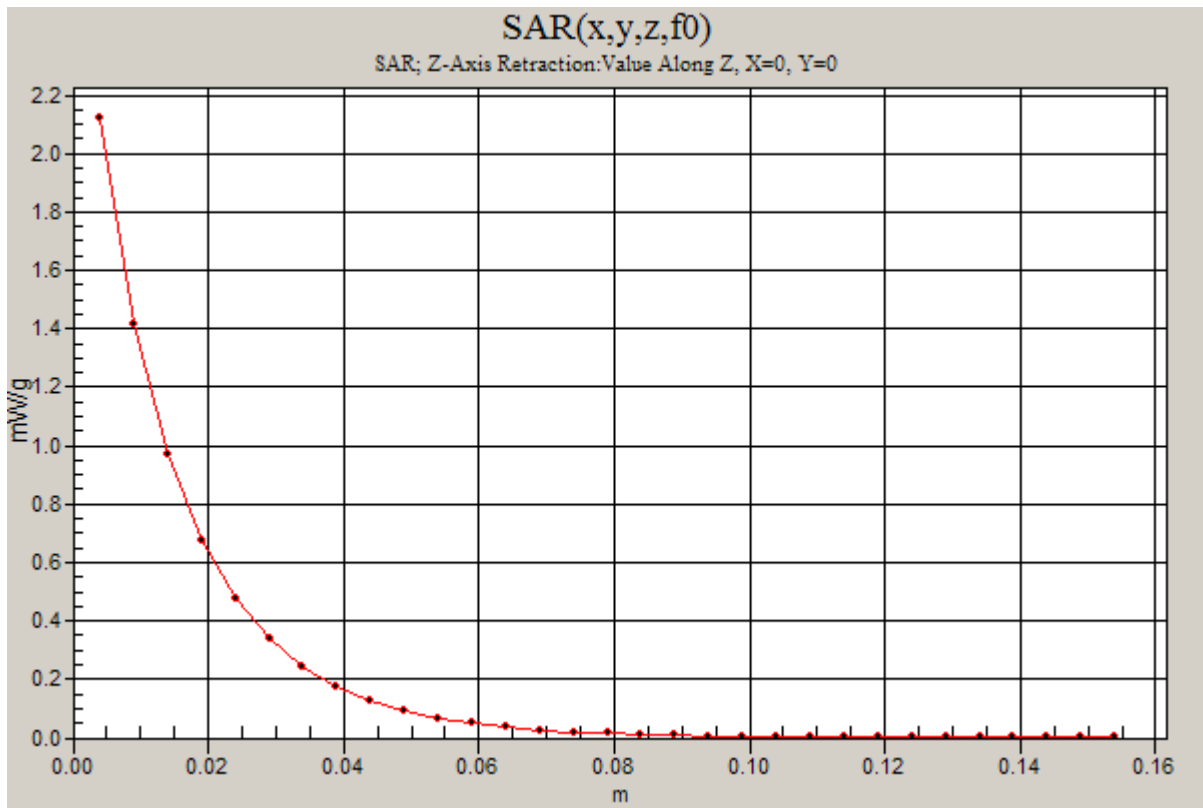
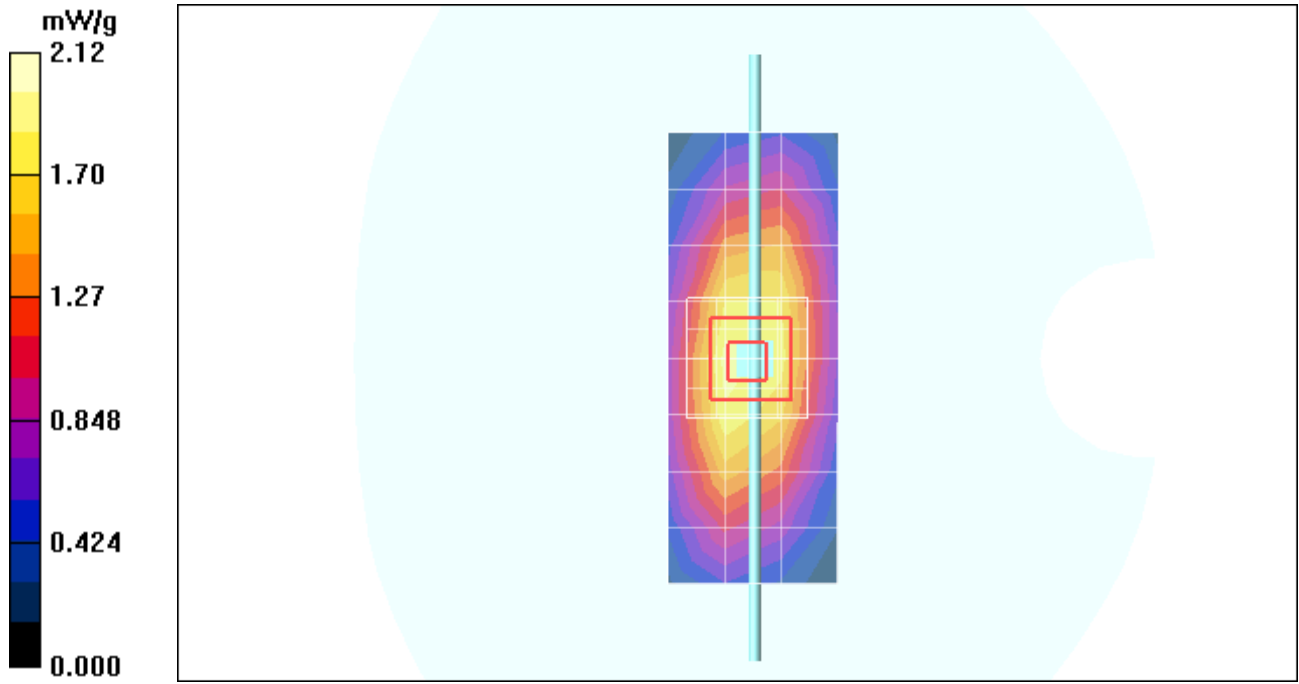
Measurement grid: dx=8mm, dy=8mm, dz=5mm

Reference Value = 48.9 V/m; Power Drift = -0.012 dB; Peak SAR (extrapolated) = 2.95 W/kg

SAR(1 g) = 1.97 mW/g; SAR(10 g) = 1.28 mW/g; Maximum value of SAR (measured) = 2.12 mW/g

Daily SPC Check/Z-Axis Retraction (1x1x31):

Measurement grid: dx=20mm, dy=20mm, dz=5mm



Date/Time: 9/30/2010 8:19:45 AM

Test Laboratory: Motorola - Sep-30-2010 835 MHz

DUT: Dipole 835 MHz; Type: D835V2; Serial: D835V2 - SN: 420TR; FCC ID: IHDP56LM1

Procedure Notes: 835 MHz System Performance Check; Dipole Sn# 420TR; Input Power = 200 mW

Sim.Temp@meas = 19.9°C; Sim.Temp@SPC = 19.9°C; Room Temp @ SPC = 20.0°C

Communication System: CW - Dipole; Frequency: 835 MHz; Duty Cycle: 1:1

Medium: VALIDATION Only

Medium parameters used: $f = 835$ MHz; $\sigma = 0.89$ mho/m; $\epsilon_r = 42.7$; $\rho = 1000$ kg/m³

DASY4 Configuration:

- Probe: ES3DV3 - SN3183; ConvF(6.11, 6.11, 6.11); Calibrated: 7/14/2010
- Sensor-Surface: 4mm (Mechanical Surface Detection)
- Electronics: DAE4 Sn702; Calibrated: 5/18/2010
- Phantom: R1_Sugar SAM (extended range), Rev.1 (25-Mar-05); Type: SAM v4.0; Serial: TP-1156;
- Measurement SW: DASY4, V4.7 Build 80; Postprocessing SW: SEMCAD, V1.8 Build 186

Daily SPC Check/Dipole Area Scan (4x9x1):

Measurement grid: dx=15mm, dy=15mm; Maximum value of SAR (measured) = 1.91 mW/g

Daily SPC Check/0-Degree, 5x5x7 Cube (5x5x7)/Cube 0:

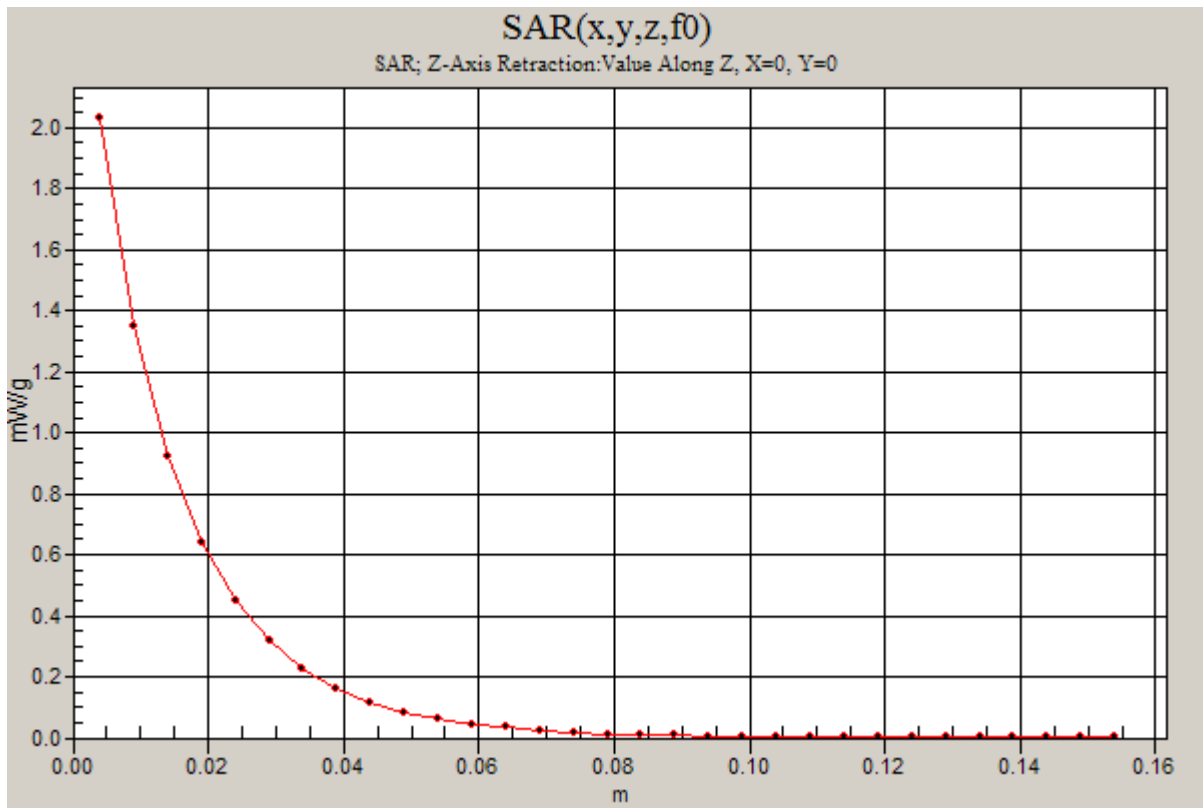
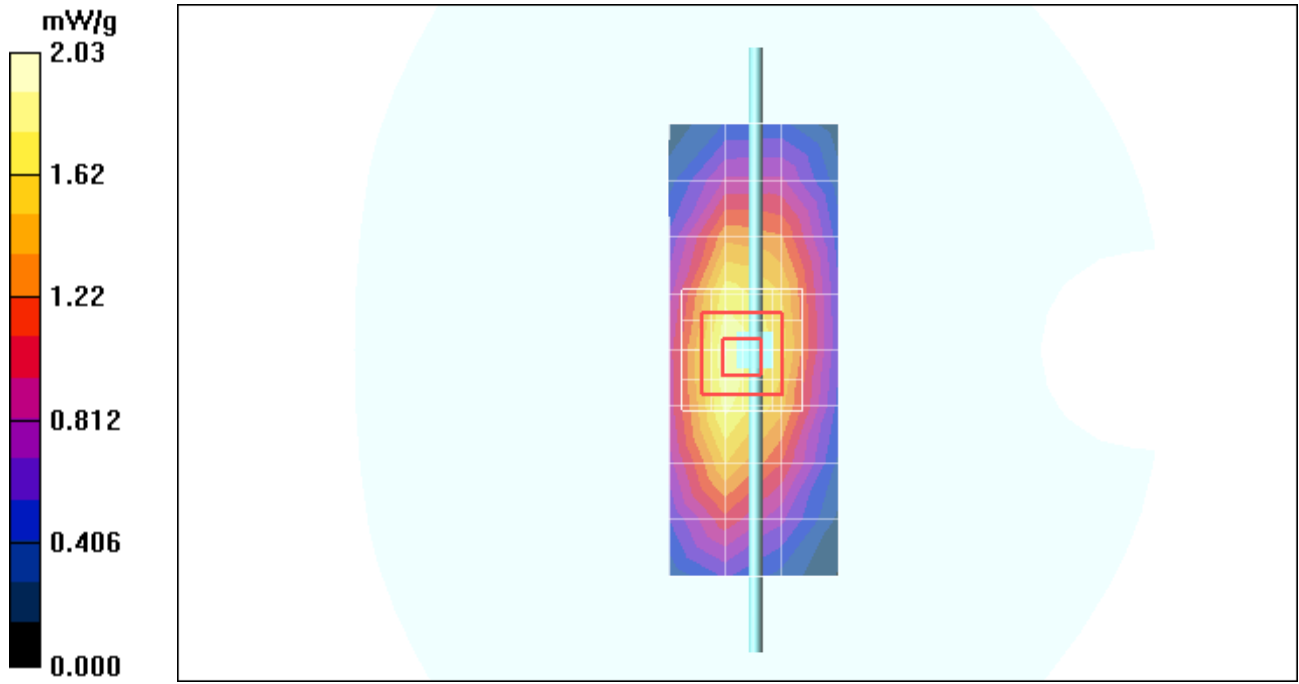
Measurement grid: dx=8mm, dy=8mm, dz=5mm

Reference Value = 47.6 V/m; Power Drift = 0.026 dB; Peak SAR (extrapolated) = 2.84 W/kg

SAR(1 g) = 1.88 mW/g; SAR(10 g) = 1.22 mW/g; Maximum value of SAR (measured) = 2.03 mW/g

Daily SPC Check/Z-Axis Retraction (1x1x31):

Measurement grid: dx=20mm, dy=20mm, dz=5mm



Date/Time: 10/4/2010 7:47:23 AM

Test Laboratory: Motorola - Oct-04-2010 835 MHz

DUT: Dipole 835 MHz; Type: D835V2; Serial: D835V2 - SN: 4d003; FCC ID: IHDP56LM1

Procedure Notes: 835 MHz System Performance Check; Dipole Sn# 4d003; Input Power = 200 mW

Sim.Temp@meas = 19.2°C; Sim.Temp@SPC = 19.2°C; Room Temp @ SPC = 20.0°C

Communication System: CW - Dipole; Frequency: 835 MHz; Duty Cycle: 1:1

Medium: VALIDATION Only

Medium parameters used: $f = 835$ MHz; $\sigma = 0.91$ mho/m; $\epsilon_r = 41.6$; $\rho = 1000$ kg/m³

DASY4 Configuration:

- Probe: ES3DV3 - SN3183; ConvF(6.11, 6.11, 6.11); Calibrated: 7/14/2010
- Sensor-Surface: 4mm (Mechanical Surface Detection)
- Electronics: DAE4 Sn702; Calibrated: 5/18/2010
- Phantom: R1_Sugar SAM (extended range), Rev.1 (25-Mar-05); Type: SAM v4.0; Serial: TP-1156;
- Measurement SW: DASY4, V4.7 Build 80; Postprocessing SW: SEMCAD, V1.8 Build 186

Daily SPC Check/Dipole Area Scan (4x9x1):

Measurement grid: dx=15mm, dy=15mm; Maximum value of SAR (measured) = 1.96 mW/g

Daily SPC Check/0-Degree, 5x5x7 Cube (5x5x7)/Cube 0:

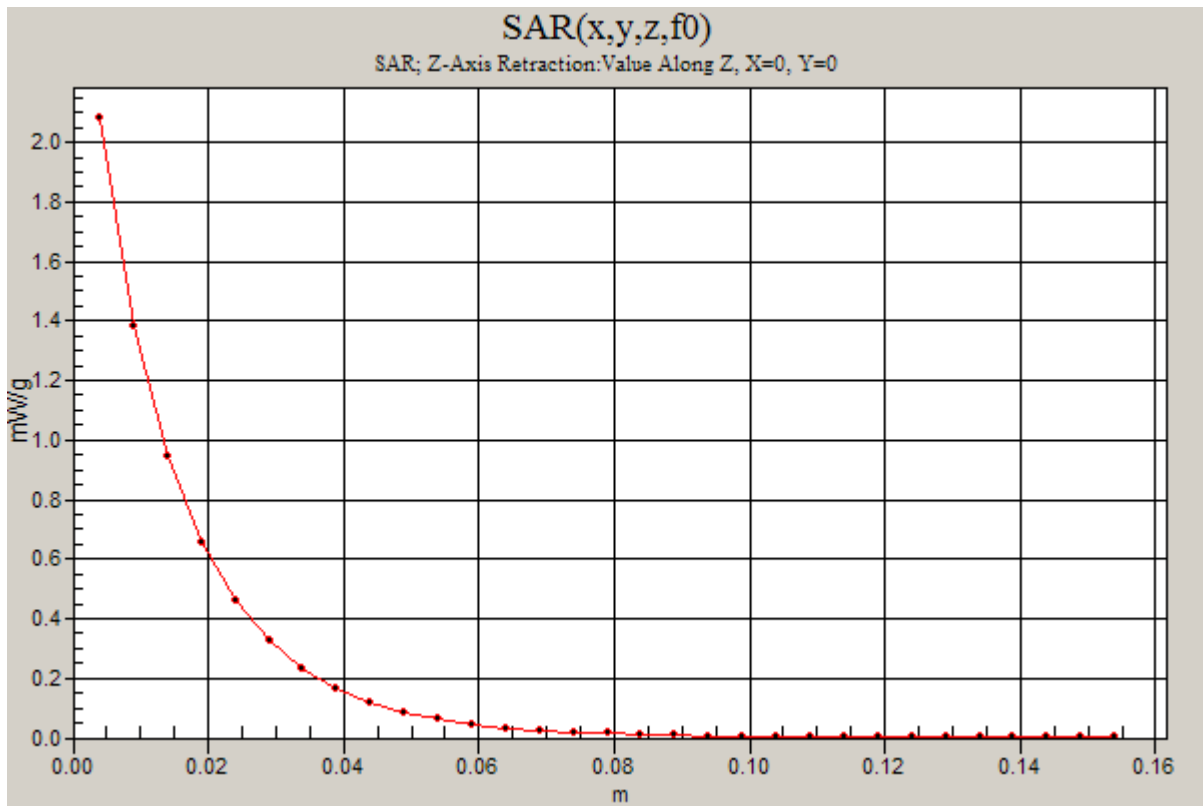
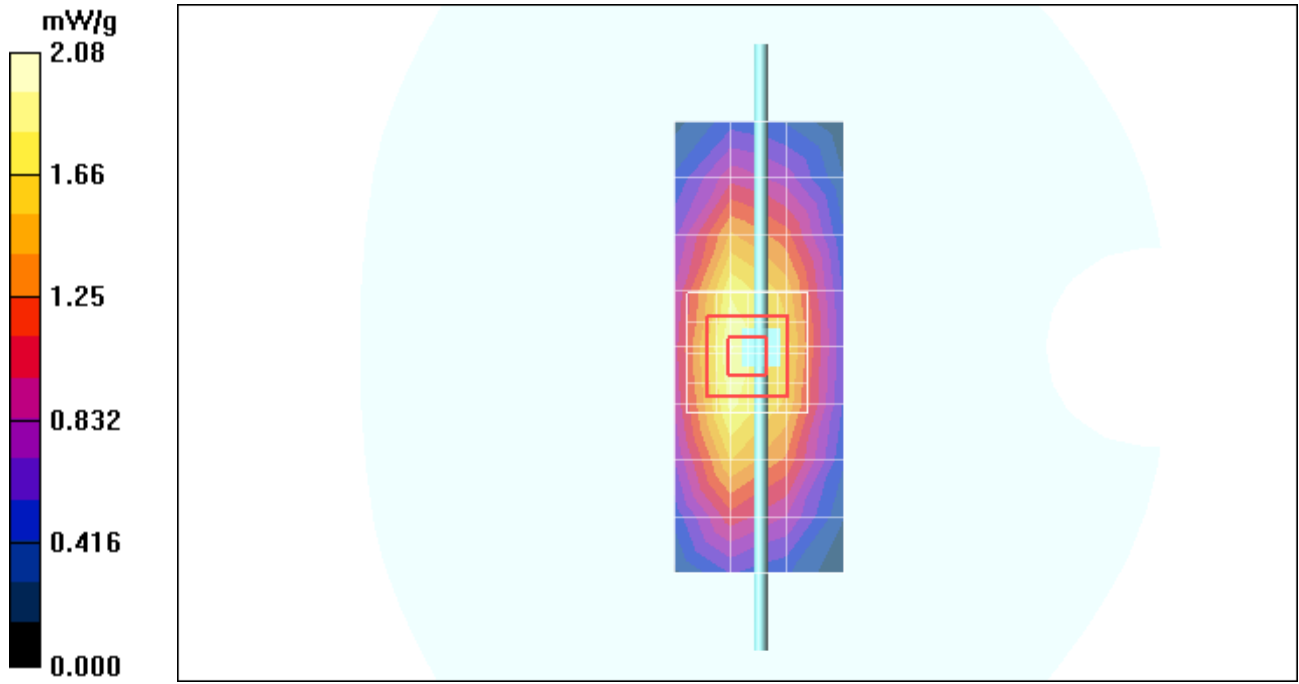
Measurement grid: dx=8mm, dy=8mm, dz=5mm

Reference Value = 47.7 V/m; Power Drift = -0.017 dB; Peak SAR (extrapolated) = 2.89 W/kg

SAR(1 g) = 1.92 mW/g; SAR(10 g) = 1.25 mW/g; Maximum value of SAR (measured) = 2.08 mW/g

Daily SPC Check/Z-Axis Retraction (1x1x31):

Measurement grid: dx=20mm, dy=20mm, dz=5mm



Date/Time: 10/5/2010 8:15:02 AM

Test Laboratory: Motorola - Oct-05-2010 835 MHz

DUT: Dipole 835 MHz; Type: D835V2; Serial: D835V2 - SN: 4d003; FCC ID: IHDP56LM1

Procedure Notes: 835 MHz System Performance Check; Dipole Sn# 4d003; Input Power = 200 mW

Sim.Temp@meas = 19.0°C; Sim.Temp@SPC = 19.0°C; Room Temp @ SPC = 20.1°C

Communication System: CW - Dipole; Frequency: 835 MHz; Duty Cycle: 1:1

Medium: VALIDATION Only

Medium parameters used: $f = 835$ MHz; $\sigma = 0.91$ mho/m; $\epsilon_r = 41.5$; $\rho = 1000$ kg/m³

DASY4 Configuration:

- Probe: ES3DV3 - SN3183; ConvF(6.11, 6.11, 6.11); Calibrated: 7/14/2010
- Sensor-Surface: 4mm (Mechanical Surface Detection)
- Electronics: DAE4 Sn702; Calibrated: 5/18/2010
- Phantom: R1_Sugar SAM (extended range), Rev.1 (25-Mar-05); Type: SAM v4.0; Serial: TP-1156;
- Measurement SW: DASY4, V4.7 Build 80; Postprocessing SW: SEMCAD, V1.8 Build 186

Daily SPC Check/Dipole Area Scan (4x9x1):

Measurement grid: dx=15mm, dy=15mm; Maximum value of SAR (measured) = 1.97 mW/g

Daily SPC Check/0-Degree, 5x5x7 Cube (5x5x7)/Cube 0:

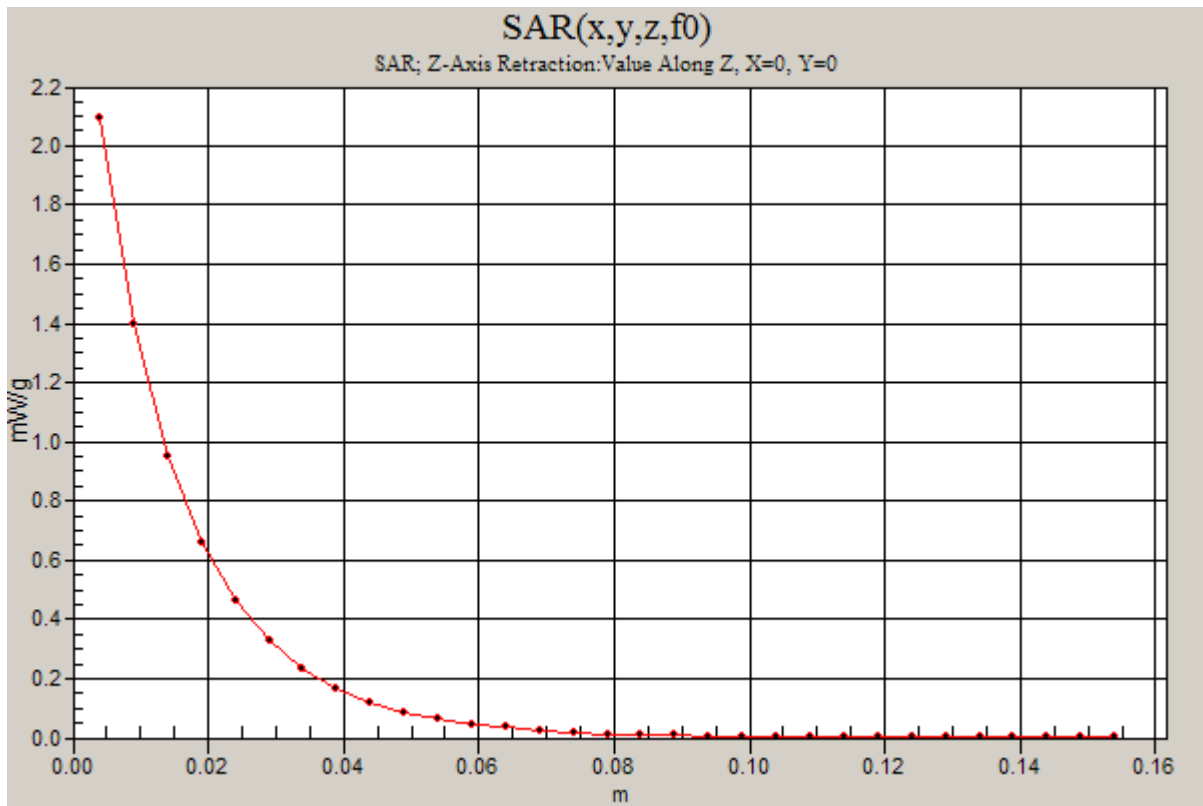
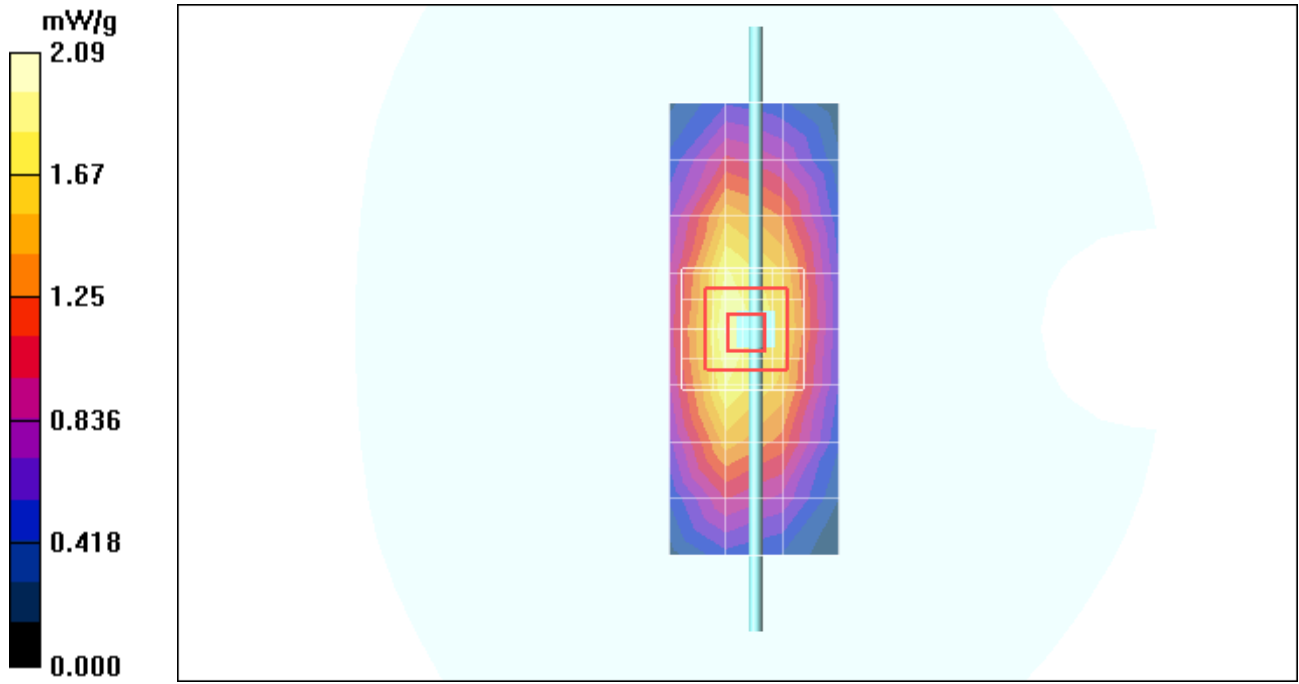
Measurement grid: dx=8mm, dy=8mm, dz=5mm

Reference Value = 48.0 V/m; Power Drift = -0.005 dB; Peak SAR (extrapolated) = 2.94 W/kg

SAR(1 g) = 1.95 mW/g; SAR(10 g) = 1.27 mW/g; Maximum value of SAR (measured) = 2.11 mW/g

Daily SPC Check/Z-Axis Retraction (1x1x31):

Measurement grid: dx=20mm, dy=20mm, dz=5mm; Maximum value of SAR (measured) = 2.09 mW/g



Appendix 2

SAR distribution plots for Phantom Head Adjacent Use

Date/Time: 9/20/2010 9:57:58 AM

Test Laboratory: Motorola - iDEN 800 Cheek

Serial: 364VLN8GX8; FCC ID: IHDP56LM1

Procedure Notes: Pwr Step: N/A; Antenna Position: Internal; Accessory Model #: N/A

Battery Model #: SNN5823A; DEVICE POSITION: Cheek

Communication System: iDEN 800; Frequency: 815.51 MHz; Duty Cycle: 1:3

Medium: iDEN & MotoTalk Sugar Head

Medium parameters used: $f = 815$ MHz; $\sigma = 0.9$ mho/m; $\epsilon_r = 42$; $\rho = 1000$ kg/m³

DASY4 Configuration:

- Probe: ES3DV3 - SN3124; ConvF(5.89, 5.89, 5.89); Calibrated: 8/11/2010
- Sensor-Surface: 4mm (Mechanical Surface Detection)
- Electronics: DAE4 Sn376; Calibrated: 7/13/2010
- Phantom: R#4 Sugar SAM (extended range), Rev.1 (25-Mar-05); Type: SAM v4.0; Serial: TP-1131;
- Measurement SW: DASY4, V4.7 Build 80; Postprocessing SW: SEMCAD, V1.8 Build 186

Left Head Template/Area Scan - Normal (15mm) (7x17x1):

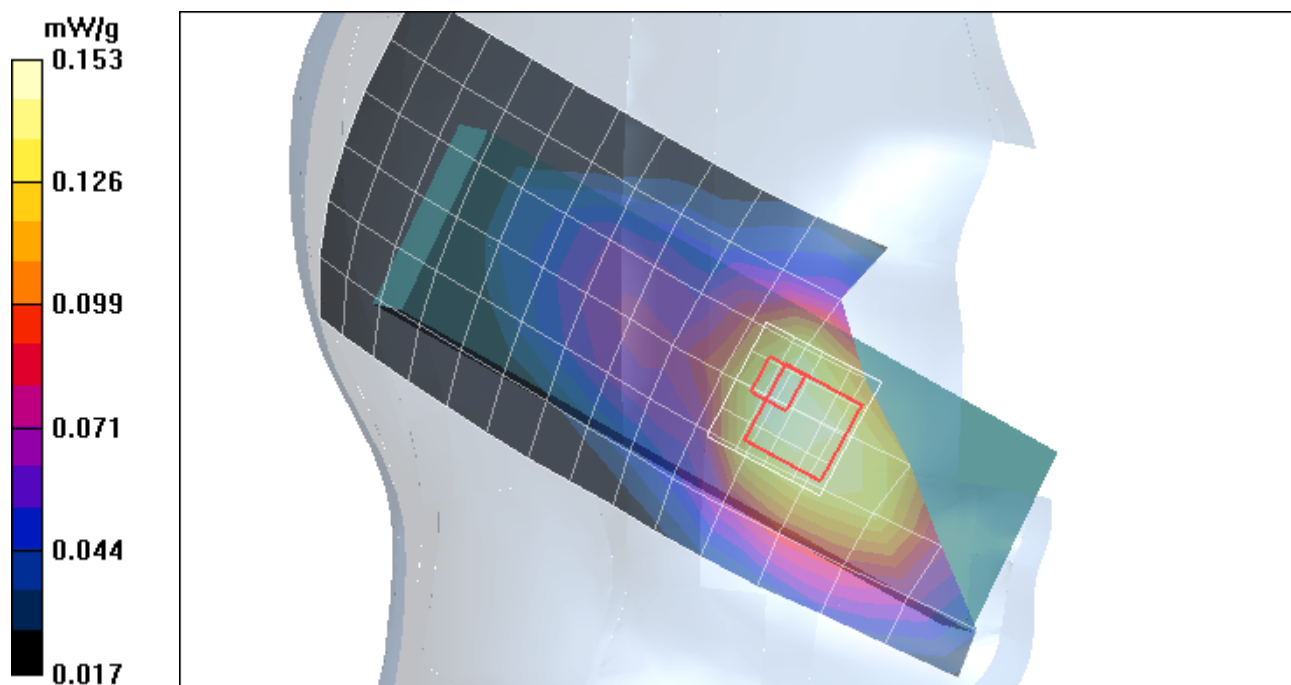
Measurement grid: $dx=15$ mm, $dy=15$ mm; Maximum value of SAR (measured) = 0.156 mW/g

Left Head Template/5x5x7 Zoom Scan (≤ 3 GHz) (5x5x7)/Cube 0:

Measurement grid: $dx=8$ mm, $dy=8$ mm, $dz=5$ mm

Reference Value = 13.2 V/m; Power Drift = -0.196 dB; Peak SAR (extrapolated) = 0.204 W/kg

SAR(1 g) = 0.146 mW/g; SAR(10 g) = 0.110 mW/g; Maximum value of SAR (measured) = 0.153 mW/g



Date/Time: 9/30/2010 9:46:08 AM

Test Laboratory: Motorola - iDEN 900 Cheek

Serial: 364VLN8GX8; FCC ID: IHDP56LM1

Procedure Notes: Pwr Step: N/A; Antenna Position: Internal; Accessory Model #: N/A

Battery Model #: SNN5823A; DEVICE POSITION (cheek or rotated): Cheek

Communication System: iDEN 900; Frequency: 898.99 MHz; Duty Cycle: 1:3

Medium: iDEN & MotoTalk Sugar Head

Medium parameters used: $f = 899$ MHz; $\sigma = 0.96$ mho/m; $\epsilon_r = 41.8$; $\rho = 1000$ kg/m³

DASY4 Configuration:

- Probe: ES3DV3 - SN3183; ConvF(6.11, 6.11, 6.11); Calibrated: 7/14/2010
- Sensor-Surface: 4mm (Mechanical Surface Detection)
- Electronics: DAE4 Sn702; Calibrated: 5/18/2010
- Phantom: R1_Sugar SAM (extended range), Rev.1 (25-Mar-05); Type: SAM v4.0; Serial: TP-1156;
- Measurement SW: DASY4, V4.7 Build 80; Postprocessing SW: SEMCAD, V1.8 Build 186

Right Head Template/Area Scan - Normal (15mm) (7x17x1):

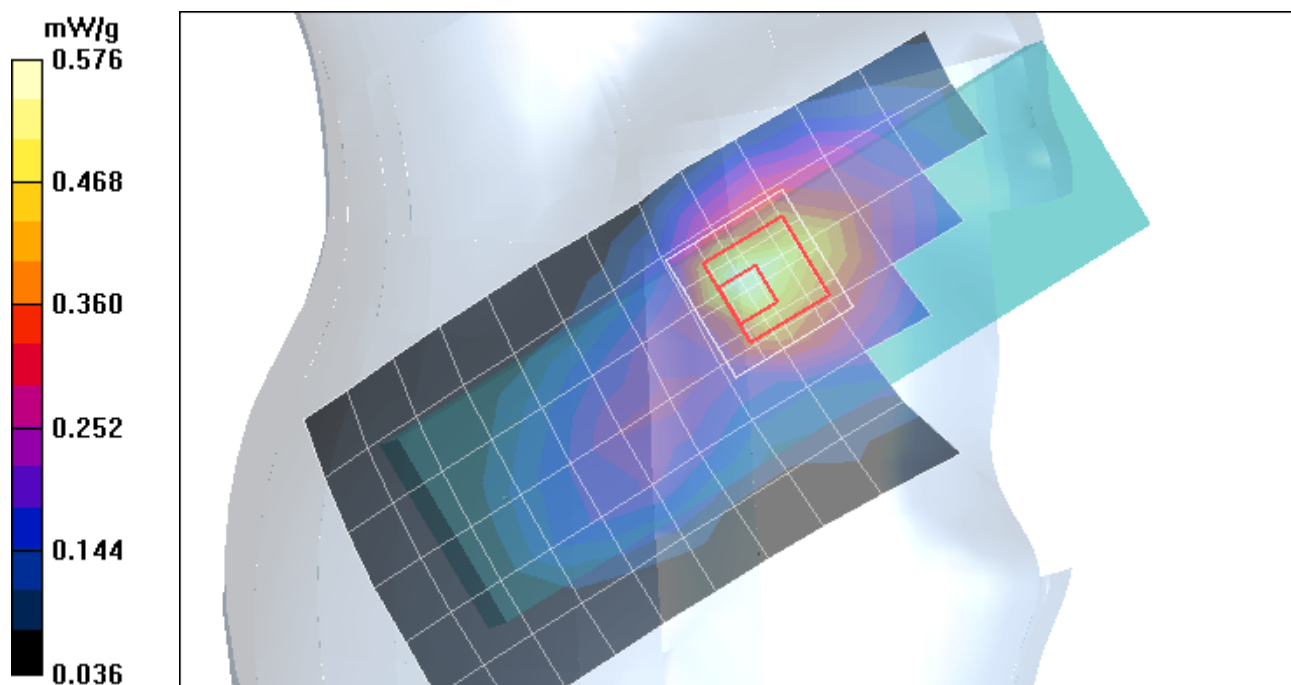
Measurement grid: $dx=15$ mm, $dy=15$ mm; Maximum value of SAR (measured) = 0.596 mW/g

Right Head Template/5x5x7 Zoom Scan (≤ 3 GHz) (5x5x7)/Cube 0:

Measurement grid: $dx=8$ mm, $dy=8$ mm, $dz=5$ mm

Reference Value = 24.9 V/m; Power Drift = -0.015 dB; Peak SAR (extrapolated) = 0.939 W/kg

SAR(1 g) = 0.531 mW/g; SAR(10 g) = 0.330 mW/g; Maximum value of SAR (measured) = 0.576 mW/g



Date/Time: 9/20/2010 10:16:31 AM

Test Laboratory: Motorola - iDEN 800 Tilt

Serial: 364VLN8GX8; FCC ID: IHDP56LM1

Procedure Notes: Pwr Step: N/A; Antenna Position: Internal; Accessory Model #: N/A

Battery Model #: SNN5823A; DEVICE POSITION: Tilt

Communication System: iDEN 800; Frequency: 815.51 MHz; Duty Cycle: 1:3

Medium: iDEN & MotoTalk Sugar Head

Medium parameters used: $f = 815$ MHz; $\sigma = 0.9$ mho/m; $\epsilon_r = 42$; $\rho = 1000$ kg/m³

DASY4 Configuration:

- Probe: ES3DV3 - SN3124; ConvF(5.89, 5.89, 5.89); Calibrated: 8/11/2010
- Sensor-Surface: 4mm (Mechanical Surface Detection)
- Electronics: DAE4 Sn376; Calibrated: 7/13/2010
- Phantom: R#4 Sugar SAM (extended range), Rev.1 (25-Mar-05); Type: SAM v4.0; Serial: TP-1131;
- Measurement SW: DASY4, V4.7 Build 80; Postprocessing SW: SEMCAD, V1.8 Build 186

Left Head Template/Area Scan - Normal (15mm) (7x17x1):

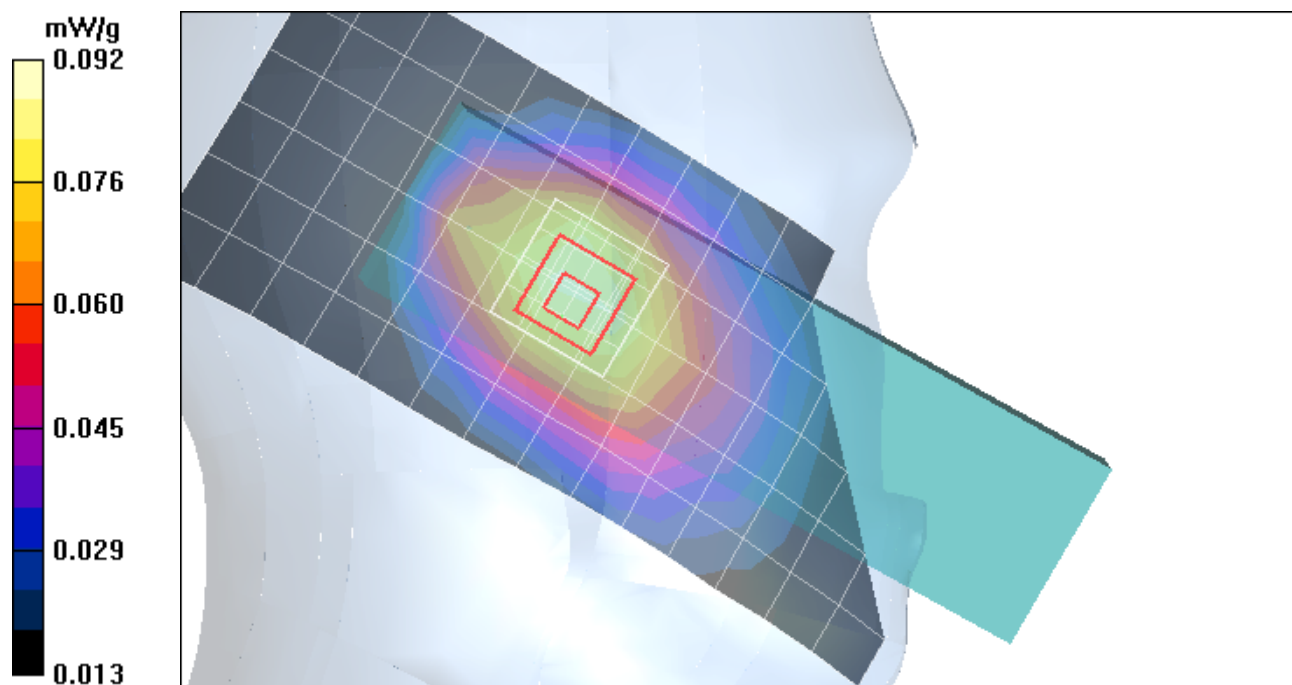
Measurement grid: dx=15mm, dy=15mm; Maximum value of SAR (measured) = 0.089 mW/g

Left Head Template/5x5x7 Zoom Scan (<=3GHz) (5x5x7)/Cube 0:

Measurement grid: dx=8mm, dy=8mm, dz=5mm

Reference Value = 9.75 V/m; Power Drift = -0.018 dB; Peak SAR (extrapolated) = 0.113 W/kg

SAR(1 g) = 0.087 mW/g; SAR(10 g) = 0.065 mW/g; Maximum value of SAR (measured) = 0.092 mW/g



Date/Time: 9/30/2010 10:49:56 AM

Test Laboratory: Motorola - iDEN 900 Tilt

Serial: 364VLN8GX8; FCC ID: IHDP56LM1

Procedure Notes: Pwr Step: N/A; Antenna Position: Internal; Accessory Model #: N/A

Battery Model #: SNN5823A; DEVICE POSITION (check or rotated): Tilt

Communication System: iDEN 900; Frequency: 898.99 MHz; Duty Cycle: 1:3

Medium: iDEN & MotoTalk Sugar Head

Medium parameters used: $f = 899$ MHz; $\sigma = 0.96$ mho/m; $\epsilon_r = 41.8$; $\rho = 1000$ kg/m³

DASY4 Configuration:

- Probe: ES3DV3 - SN3183; ConvF(6.11, 6.11, 6.11); Calibrated: 7/14/2010
- Sensor-Surface: 4mm (Mechanical Surface Detection)
- Electronics: DAE4 Sn702; Calibrated: 5/18/2010
- Phantom: R1_Sugar SAM (extended range), Rev.1 (25-Mar-05); Type: SAM v4.0; Serial: TP-1156;
- Measurement SW: DASY4, V4.7 Build 80; Postprocessing SW: SEMCAD, V1.8 Build 186

Right Head Template/Area Scan - Normal (15mm) (7x17x1):

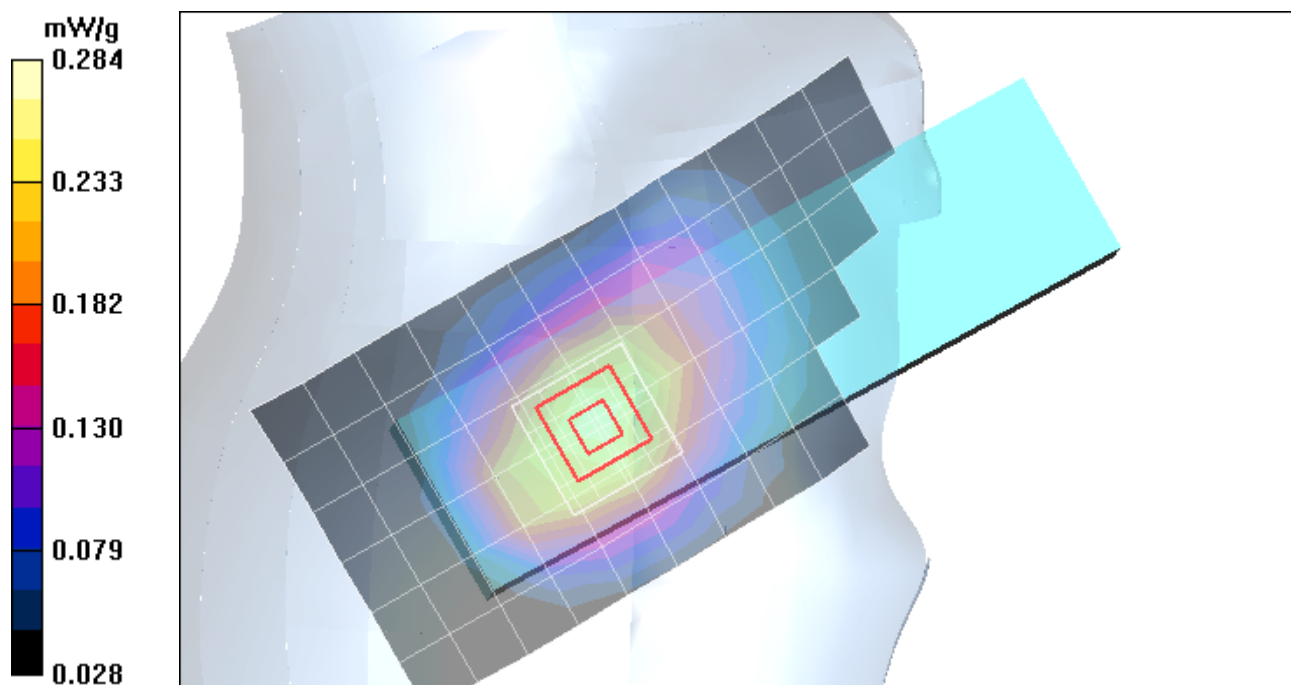
Measurement grid: $dx=15$ mm, $dy=15$ mm; Maximum value of SAR (measured) = 0.268 mW/g

Right Head Template/5x5x7 Zoom Scan (≤ 3 GHz) (5x5x7)/Cube 0:

Measurement grid: $dx=8$ mm, $dy=8$ mm, $dz=5$ mm

Reference Value = 16.6 V/m; Power Drift = 0.009 dB; Peak SAR (extrapolated) = 0.346 W/kg

SAR(1 g) = 0.263 mW/g; SAR(10 g) = 0.190 mW/g; Maximum value of SAR (measured) = 0.284 mW/g



Appendix 3

SAR distribution plots for Dispatch/Push-to-Talk Use

Date/Time: 9/20/2010 1:48:00 PM

Test Laboratory: Motorola - iDEN 800 Dispatch/PTT

Serial: 364VLN8GX8; FCC ID: IHDP56LM1

Procedure Notes: Pwr Step: N/A; Antenna Position: Internal; Battery Model #: SNN5823A

Device Position: Dispatch/Push-to-Talk Position, Front of Phone 25 mm from Phantom, Flip Closed

Device Mode: iDEN 800 Dispatch mode

Communication System: iDEN 800; Frequency: 815.51 MHz; Duty Cycle: 1:6

Medium: iDEN & MotoTalk Sugar Head

Medium parameters used: $f = 815$ MHz; $\sigma = 0.9$ mho/m; $\epsilon_r = 42$; $\rho = 1000$ kg/m³

DASY4 Configuration:

- Probe: ES3DV3 - SN3124; ConvF(5.89, 5.89, 5.89); Calibrated: 8/11/2010
- Sensor-Surface: 4mm (Mechanical Surface Detection)
- Electronics: DAE4 Sn376; Calibrated: 7/13/2010
- Phantom: R#4 Sugar SAM (extended range), Rev.1 (25-Mar-05); Type: SAM v4.0; Serial: TP-1131;
- Measurement SW: DASY4, V4.7 Build 80; Postprocessing SW: SEMCAD, V1.8 Build 186

SAM Phone Against Flat Section/Area Scan - Normal Body (15mm) (13x7x1):

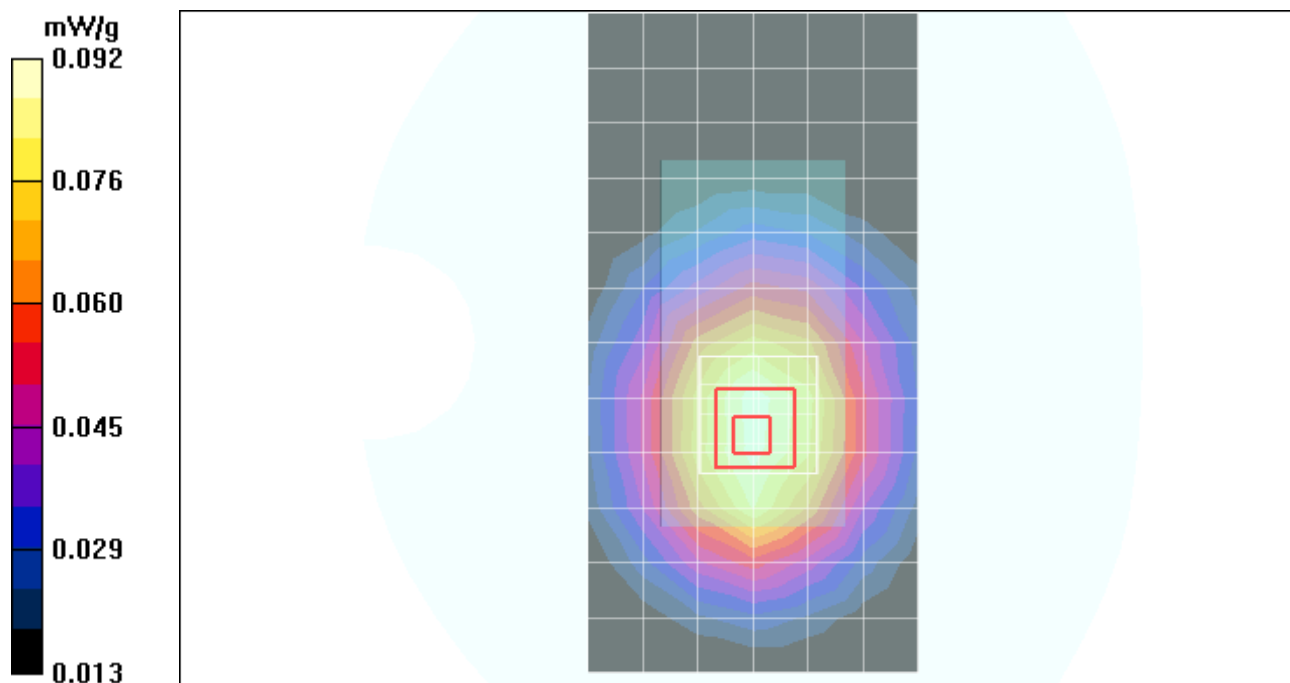
Measurement grid: dx=15mm, dy=15mm; Maximum value of SAR (measured) = 0.090 mW/g

SAM Phone Against Flat Section/5x5x7 Zoom Scan (<=3GHz) (5x5x7)/Cube 0:

Measurement grid: dx=8mm, dy=8mm, dz=5mm

Reference Value = 10.1 V/m; Power Drift = 0.042 dB; Peak SAR (extrapolated) = 0.115 W/kg

SAR(1 g) = 0.087 mW/g; SAR(10 g) = 0.063 mW/g; Maximum value of SAR (measured) = 0.092 mW/g



Date/Time: 9/30/2010 11:14:46 AM

Test Laboratory: Motorola - iDEN 900 Dispatch/PTT

Serial: 364VLN8GX8; FCC ID: IHDP56LM1

Procedure Notes: Pwr Step: N/A; Antenna Position: Internal; Battery Model #: SNN5823A

Device Position: Dispatch/Push-to-Talk Position, Front of Phone 25 mm from Phantom, Flip Open

Device Mode: iDEN 900 Dispatch mode

Communication System: iDEN 900; Frequency: 898.99 MHz; Duty Cycle: 1:6

Medium: iDEN & MotoTalk Sugar Head

Medium parameters used: $f = 899$ MHz; $\sigma = 0.96$ mho/m; $\epsilon_r = 41.8$; $\rho = 1000$ kg/m³

DASY4 Configuration:

- Probe: ES3DV3 - SN3183; ConvF(6.11, 6.11, 6.11); Calibrated: 7/14/2010
- Sensor-Surface: 4mm (Mechanical Surface Detection)
- Electronics: DAE4 Sn702; Calibrated: 5/18/2010
- Phantom: R1_Sugar SAM (extended range), Rev.1 (25-Mar-05); Type: SAM v4.0; Serial: TP-1156;
- Measurement SW: DASY4, V4.7 Build 80; Postprocessing SW: SEMCAD, V1.8 Build 186

SAM Phone Against Flat Section/Area Scan - Normal Body (15mm) (13x7x1):

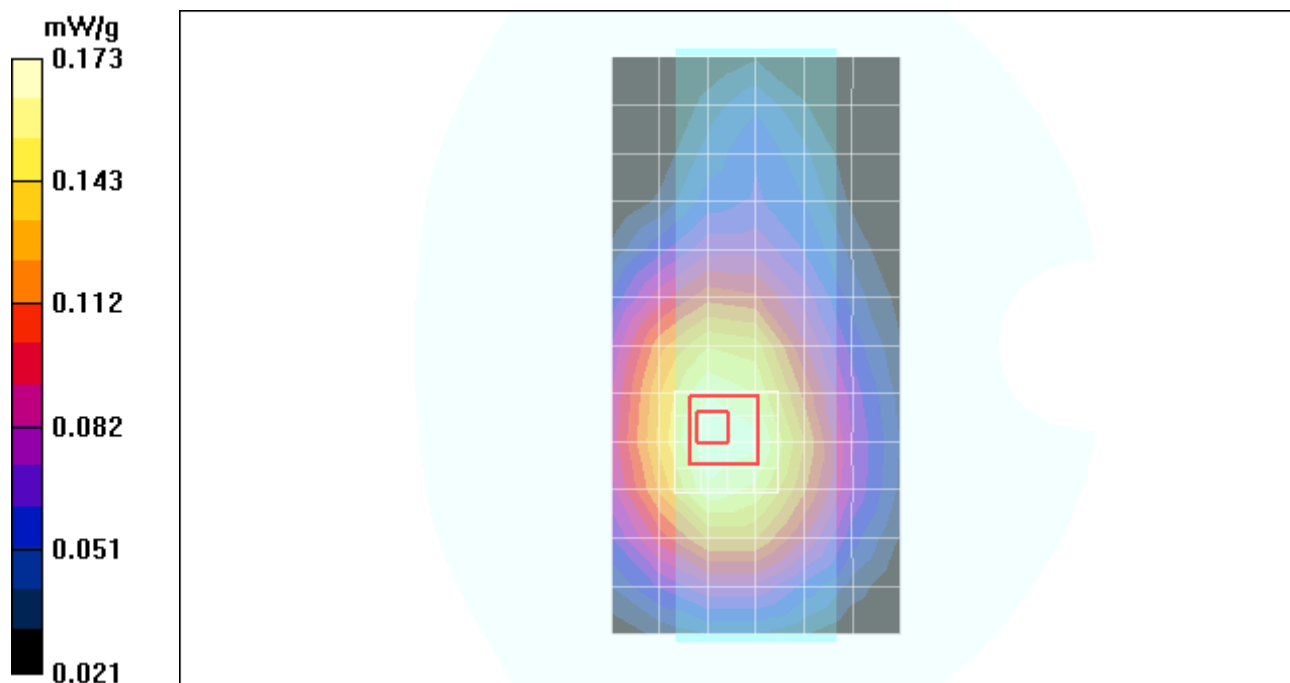
Measurement grid: dx=15mm, dy=15mm; Maximum value of SAR (measured) = 0.173 mW/g

SAM Phone Against Flat Section/5x5x7 Zoom Scan (<=3GHz) (5x5x7)/Cube 0:

Measurement grid: dx=8mm, dy=8mm, dz=5mm

Reference Value = 12.9 V/m; Power Drift = -0.029 dB; Peak SAR (extrapolated) = 0.228 W/kg

SAR(1 g) = 0.164 mW/g; SAR(10 g) = 0.118 mW/g



Date/Time: 10/5/2010 9:07:46 AM

Test Laboratory: Motorola - MOTotalk Dispatch/PTT

Serial: 364VLN8GX8; FCC ID: IHDP56LM1

Procedure Notes: Pwr Step: N/A; Antenna Position: Internal; Battery Model #: SNN5823A

Device Position: Dispatch/Push-to-Talk Position, Front of Phone 25 mm from Phantom, Flip Open

Communication System: MotoTalk; Frequency: 915.525 MHz; Duty Cycle: 1:1.05

Medium: iDEN & MotoTalk Sugar Body

Medium parameters used: $f = 915$ MHz; $\sigma = 0.99$ mho/m; $\epsilon_r = 40.6$; $\rho = 1000$ kg/m³

DASY4 Configuration:

- Probe: ES3DV3 - SN3183; ConvF(6.11, 6.11, 6.11); Calibrated: 7/14/2010
- Sensor-Surface: 4mm (Mechanical Surface Detection)
- Electronics: DAE4 Sn702; Calibrated: 5/18/2010
- Phantom: R1_Sugar SAM (extended range), Rev.1 (25-Mar-05); Type: SAM v4.0; Serial: TP-1156;
- Measurement SW: DASY4, V4.7 Build 80; Postprocessing SW: SEMCAD, V1.8 Build 186

SAM Phone Against Flat Section/Area Scan - Normal Body (15mm) (13x7x1):

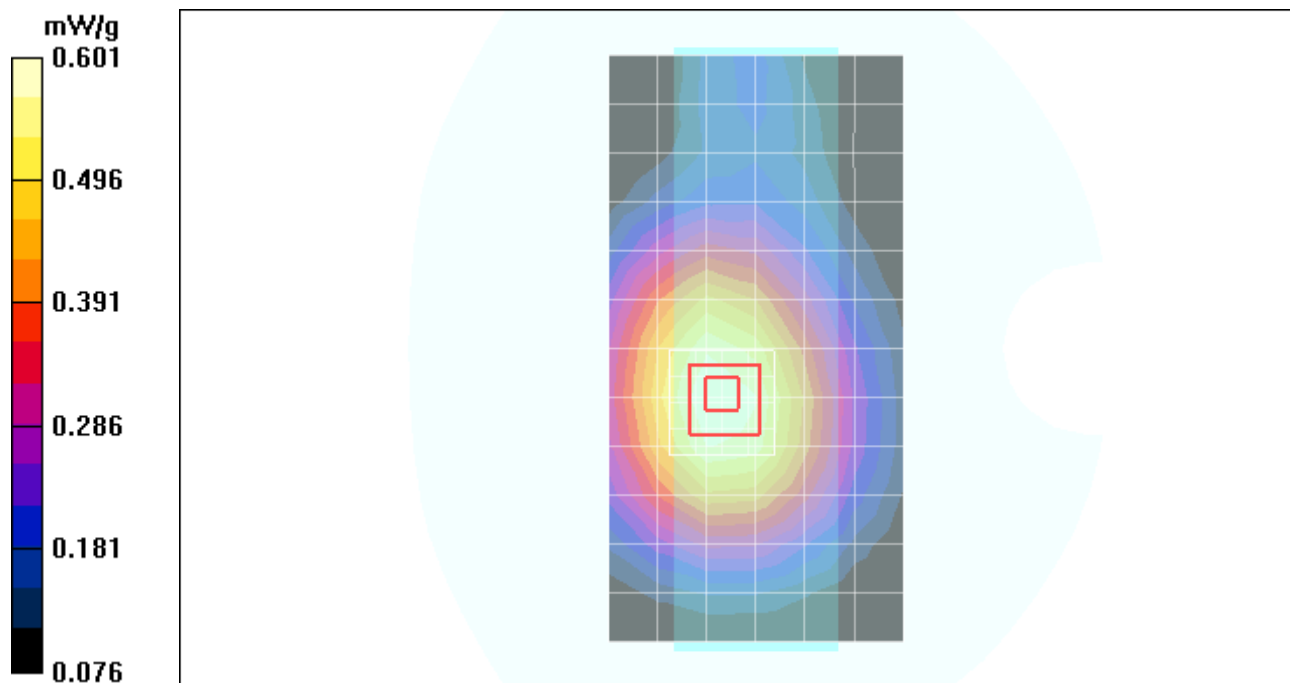
Measurement grid: dx=15mm, dy=15mm; Maximum value of SAR (measured) = 0.603 mW/g

SAM Phone Against Flat Section/5x5x7 Zoom Scan (<=3GHz) (5x5x7)/Cube 0:

Measurement grid: dx=8mm, dy=8mm, dz=5mm

Reference Value = 24.4 V/m; Power Drift = -0.080 dB; Peak SAR (extrapolated) = 0.765 W/kg

SAR(1 g) = 0.573 mW/g; SAR(10 g) = 0.416 mW/g; Maximum value of SAR (measured) = 0.601 mW/g



Appendix 4

SAR distribution plots for Body Worn Configurations

Date/Time: 9/20/2010 3:43:24 PM

Test Laboratory: Motorola - iDEN 800 Body-Worn

Serial: 364VLN8GX8; FCC ID: IHDP56LM1

Procedure Notes: Pwr Step: N/A; Antenna Position: Internal; Battery Model #: SNN5823A

Device Position: Body Worn with Holster NNTN9015A (Front of Phone facing Phantom)

Device Mode: iDEN 800 Packet Data mode

Communication System: iDEN 800; Frequency: 815.51 MHz; Duty Cycle: 1:1.5

Medium: iDEN & MotoTalk Sugar Body

Medium parameters used: $f = 815 \text{ MHz}$; $\sigma = 0.98 \text{ mho/m}$; $\epsilon_r = 54.6$; $\rho = 1000 \text{ kg/m}^3$

DASY4 Configuration:

- Probe: ES3DV3 - SN3124; ConvF(5.86, 5.86, 5.86); Calibrated: 8/11/2010
- Sensor-Surface: 4mm (Mechanical Surface Detection)
- Electronics: DAE4 Sn376; Calibrated: 7/13/2010
- Phantom: R4 : Sect.2, Amy Twin, Rev.3 (3-Feb-10); Type: Amy Twin Flat; Serial: n/a;
- Measurement SW: DASY4, V4.7 Build 80; Postprocessing SW: SEMCAD, V1.8 Build 186

Amy Twin Phone Template/Area Scan - Normal Body (15mm) (13x7x1):

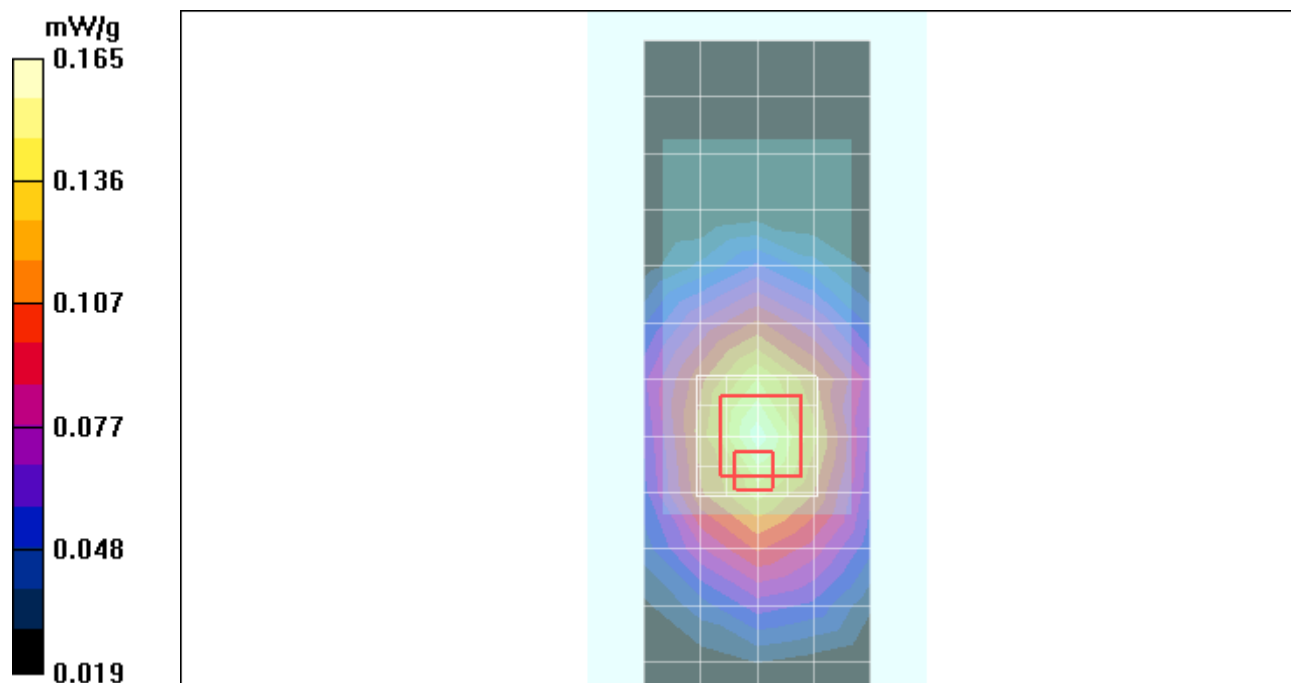
Measurement grid: $dx=15\text{mm}$, $dy=15\text{mm}$; Maximum value of SAR (measured) = 0.162 mW/g

Amy Twin Phone Template/5x5x7 Zoom Scan ($\leq 3\text{GHz}$) (5x5x7)/Cube 0:

Measurement grid: $dx=8\text{mm}$, $dy=8\text{mm}$, $dz=5\text{mm}$

Reference Value = 12.1 V/m; Power Drift = -0.186 dB; Peak SAR (extrapolated) = 0.260 W/kg

SAR(1 g) = 0.149 mW/g; SAR(10 g) = 0.106 mW/g; Maximum value of SAR (measured) = 0.165 mW/g



Date/Time: 9/23/2010 11:12:09 AM

Test Laboratory: Motorola - iDEN 900 Body-Worn

Serial: 364VLN8GX8; FCC ID: IHDP56LM1

Procedure Notes: Pwr Step: N/A; Antenna Position: Internal; Battery Model #: SNN5823A

Device Position: Body Worn, Back of Phone 25 mm from Phantom

Device Mode: iDEN 900 Interconnect mode

Communication System: iDEN 900; Frequency: 898.99 MHz; Duty Cycle: 1:3

Medium: iDEN & MotoTalk Sugar Body

Medium parameters used: $f = 899$ MHz; $\sigma = 1.06$ mho/m; $\epsilon_r = 53.4$; $\rho = 1000$ kg/m³

DASY4 Configuration:

- Probe: ES3DV3 - SN3124; ConvF(5.86, 5.86, 5.86); Calibrated: 8/11/2010
- Sensor-Surface: 4mm (Mechanical Surface Detection)
- Electronics: DAE4 Sn376; Calibrated: 7/13/2010
- Phantom: R4 : Sect.2, Amy Twin, Rev.3 (3-Feb-10); Type: Amy Twin Flat; Serial: n/a;
- Measurement SW: DASY4, V4.7 Build 80; Postprocessing SW: SEMCAD, V1.8 Build 186

Amy Twin Phone Template/Area Scan - Normal Body (15mm) (13x7x1):

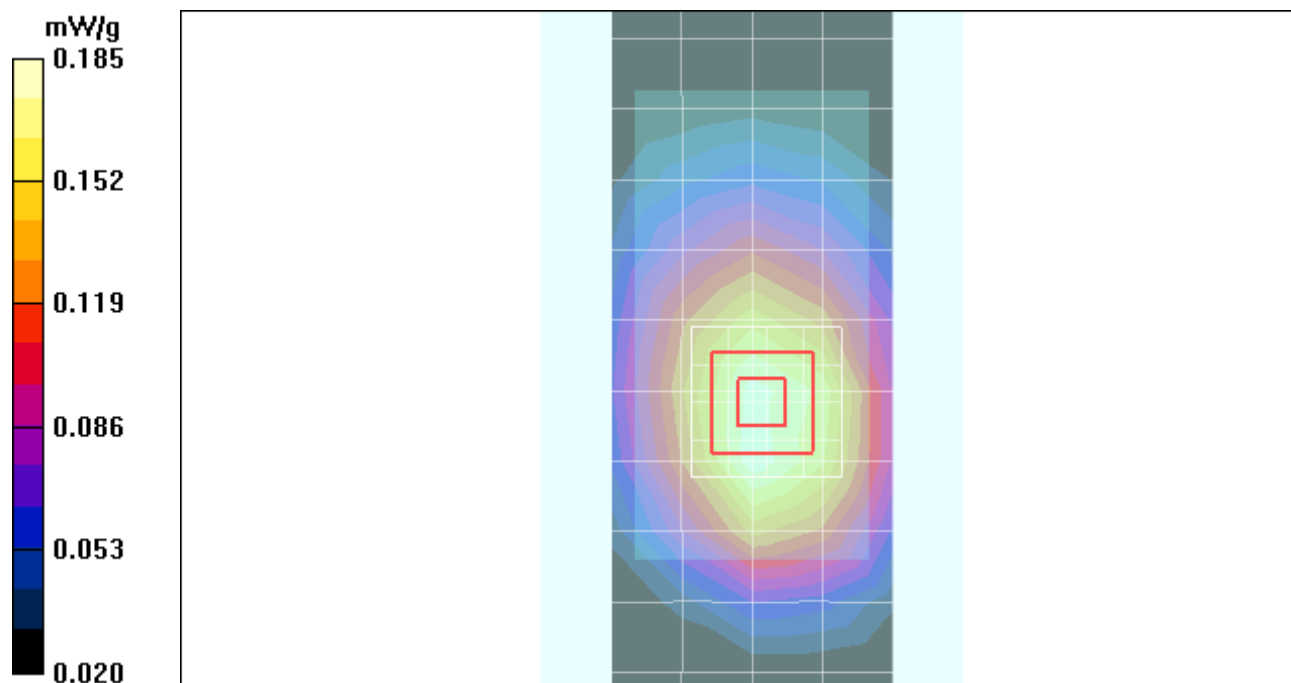
Measurement grid: dx=15mm, dy=15mm; Maximum value of SAR (measured) = 0.183 mW/g

Amy Twin Phone Template/5x5x7 Zoom Scan (<=3GHz), (5x5x7)/Cube 0:

Measurement grid: dx=8mm, dy=8mm, dz=5mm

Reference Value = 13.4 V/m; Power Drift = 0.034 dB; Peak SAR (extrapolated) = 0.231 W/kg

SAR(1 g) = 0.176 mW/g; SAR(10 g) = 0.128 mW/g; Maximum value of SAR (measured) = 0.185 mW/g



Date/Time: 10/4/2010 2:37:55 PM

Test Laboratory: Motorola - MOTotalk Body-Worn

Serial: 364VLN8GX8; FCC ID: IHDP56LM1

Procedure Notes: Pwr Step: N/A; Antenna Position: Internal; Battery Model #: SNN5823A

Device Position: Body Worn, Back of Phone 25 mm from Phantom

Communication System: MotoTalk; Frequency: 915.525 MHz; Duty Cycle: 1:1.05

Medium: iDEN & MotoTalk Sugar Body

Medium parameters used: $f = 915$ MHz; $\sigma = 1.08$ mho/m; $\epsilon_r = 54.3$; $\rho = 1000$ kg/m³

DASY4 Configuration:

- Probe: ES3DV3 - SN3183; ConvF(6.15, 6.15, 6.15); Calibrated: 7/14/2010
- Sensor-Surface: 4mm (Mechanical Surface Detection)
- Electronics: DAE4 Sn702; Calibrated: 5/18/2010
- Phantom: R1_Section 1, Amy Twin, Rev3 (3-Feb-10); Type: Amy Twin Flat; Serial: n/a;
- Measurement SW: DASY4, V4.7 Build 80; Postprocessing SW: SEMCAD, V1.8 Build 186

Amy Twin Phone Template/Area Scan - Normal Extended Body (15mm) (16x7x1):

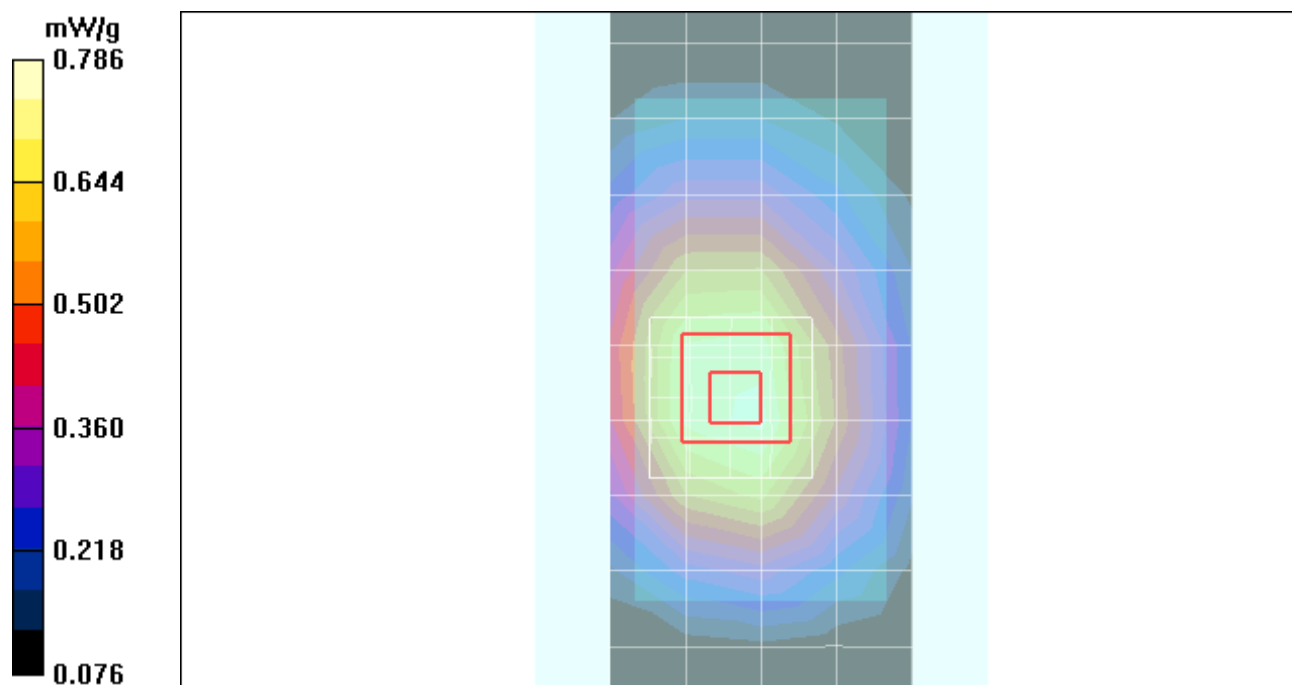
Measurement grid: $dx=15$ mm, $dy=15$ mm; Maximum value of SAR (measured) = 0.760 mW/g

Amy Twin Phone Template/5x5x7 Zoom Scan (≤ 3 GHz) (5x5x7)/Cube 0:

Measurement grid: $dx=8$ mm, $dy=8$ mm, $dz=5$ mm

Reference Value = 27.2 V/m; Power Drift = -0.072 dB; Peak SAR (extrapolated) = 1.000 W/kg

SAR(1 g) = 0.747 mW/g; SAR(10 g) = 0.534 mW/g; Maximum value of SAR (measured) = 0.786 mW/g



Appendix 5

Probe Calibration Certificates



Accredited by the Swiss Accreditation Service (SAS)
The Swiss Accreditation Service is one of the signatories to the EA
Multilateral Agreement for the recognition of calibration certificates

Accreditation No.: **SCS 108**

Client **Motorola MDb**

Certificate No: **ES3-3124_Aug10**

CALIBRATION CERTIFICATE

Object **ES3DV3 - SN:3124**

Calibration procedure(s) **QA CAL-01.v6, QA CAL-23.v3 and QA CAL-25.v2
Calibration procedure for dosimetric E-field probes**

Calibration date: **August 11, 2010**

This calibration certificate documents the traceability to national standards, which realize the physical units of measurements (SI).
The measurements and the uncertainties with confidence probability are given on the following pages and are part of the certificate.

All calibrations have been conducted in the closed laboratory facility: environment temperature (22 ± 3)°C and humidity < 70%.

Calibration Equipment used (M&TE critical for calibration)

Primary Standards	ID #	Cal Date (Certificate No.)	Scheduled Calibration
Power meter E4419B	GB41293874	1-Apr-10 (No. 217-01136)	Apr-11
Power sensor E4412A	MY41495277	1-Apr-10 (No. 217-01136)	Apr-11
Power sensor E4412A	MY41498087	1-Apr-10 (No. 217-01136)	Apr-11
Reference 3 dB Attenuator	SN: S5054 (3c)	30-Mar-10 (No. 217-01159)	Mar-11
Reference 20 dB Attenuator	SN: S5086 (20b)	30-Mar-10 (No. 217-01161)	Mar-11
Reference 30 dB Attenuator	SN: S5129 (30b)	30-Mar-10 (No. 217-01160)	Mar-11
Reference Probe ES3DV2	SN: 3013	30-Dec-09 (No. ES3-3013_Dec09)	Dec-10
DAE4	SN: 660	20-Apr-10 (No. DAE4-660_Apr10)	Apr-11
Secondary Standards	ID #	Check Date (in house)	Scheduled Check
RF generator HP 8648C	US3642U01700	4-Aug-99 (in house check Oct-09)	In house check: Oct-11
Network Analyzer HP 8753E	US37390585	18-Oct-01 (in house check Oct-09)	In house check: Oct10

Calibrated by: **Claudio Leubler** **Laboratory Technician**

Signature

Approved by: **Katja Pokovic** **Technical Manager**

Issued: August 14, 2010

This calibration certificate shall not be reproduced except in full without written approval of the laboratory.



Accredited by the Swiss Accreditation Service (SAS)
The Swiss Accreditation Service is one of the signatories to the EA
Multilateral Agreement for the recognition of calibration certificates

Accreditation No.: **SCS 108**

Glossary:

TSL	tissue simulating liquid
NORM _{x,y,z}	sensitivity in free space
ConvF	sensitivity in TSL / NORM _{x,y,z}
DCP	diode compression point
CF	crest factor (1/duty_cycle) of the RF signal
A, B, C	modulation dependent linearization parameters
Polarization φ	φ rotation around probe axis
Polarization ϑ	ϑ rotation around an axis that is in the plane normal to probe axis (at measurement center), i.e., $\vartheta = 0$ is normal to probe axis

Calibration is Performed According to the Following Standards:

- IEEE Std 1528-2003, "IEEE Recommended Practice for Determining the Peak Spatial-Averaged Specific Absorption Rate (SAR) in the Human Head from Wireless Communications Devices: Measurement Techniques", December 2003
- IEC 62209-1, "Procedure to measure the Specific Absorption Rate (SAR) for hand-held devices used in close proximity to the ear (frequency range of 300 MHz to 3 GHz)", February 2005

Methods Applied and Interpretation of Parameters:

- NORM_{x,y,z}**: Assessed for E-field polarization $\vartheta = 0$ ($f \leq 900$ MHz in TEM-cell; $f > 1800$ MHz: R22 waveguide). NORM_{x,y,z} are only intermediate values, i.e., the uncertainties of NORM_{x,y,z} does not effect the E²-field uncertainty inside TSL (see below *ConvF*).
- NORM(f)_{x,y,z} = NORM_{x,y,z} * frequency_response** (see Frequency Response Chart). This linearization is implemented in DASY4 software versions later than 4.2. The uncertainty of the frequency response is included in the stated uncertainty of *ConvF*.
- DCP_{x,y,z}**: DCP are numerical linearization parameters assessed based on the data of power sweep with CW signal (no uncertainty required). DCP does not depend on frequency nor media.
- A_{x,y,z}; B_{x,y,z}; C_{x,y,z}; VR_{x,y,z}; A, B, C** are numerical linearization parameters assessed based on the data of power sweep for specific modulation signal. The parameters do not depend on frequency nor media. VR is the maximum calibration range expressed in RMS voltage across the diode.
- ConvF and Boundary Effect Parameters**: Assessed in flat phantom using E-field (or Temperature Transfer Standard for $f \leq 800$ MHz) and inside waveguide using analytical field distributions based on power measurements for $f > 800$ MHz. The same setups are used for assessment of the parameters applied for boundary compensation (alpha, depth) of which typical uncertainty values are given. These parameters are used in DASY4 software to improve probe accuracy close to the boundary. The sensitivity in TSL corresponds to NORM_{x,y,z} * ConvF whereby the uncertainty corresponds to that given for ConvF. A frequency dependent ConvF is used in DASY version 4.4 and higher which allows extending the validity from ± 50 MHz to ± 100 MHz.
- Spherical isotropy (3D deviation from isotropy)**: in a field of low gradients realized using a flat phantom exposed by a patch antenna.
- Sensor Offset**: The sensor offset corresponds to the offset of virtual measurement center from the probe tip (on probe axis). No tolerance required.

Probe ES3DV3

SN:3124

Manufactured:	July 11, 2006
Last calibrated:	April 21, 2009
Recalibrated:	August 11, 2010

Calibrated for DASY/EASY Systems

(Note: non-compatible with DASY2 system!)

DASY/EASY - Parameters of Probe: ES3DV3 SN:3124

Basic Calibration Parameters

	Sensor X	Sensor Y	Sensor Z	Unc (k=2)
Norm ($\mu\text{V}/(\text{V}/\text{m})^2$) ^A	1.26	1.33	1.34	± 10.1%
DCP (mV) ^B	92.9	96.4	96.7	

Modulation Calibration Parameters

UID	Communication System Name	PAR		A dB	B dBuV	C	VR mV	Unc ^E (k=2)
10000	CW	0.00	X	0.00	0.00	1.00	300.0	± 1.5%
			Y	0.00	0.00	1.00	300.0	
			Z	0.00	0.00	1.00	300.0	

The reported uncertainty of measurement is stated as the standard uncertainty of measurement multiplied by the coverage factor k=2, which for a normal distribution corresponds to a coverage probability of approximately 95%.

^A The uncertainties of NormX,Y,Z do not affect the E²-field uncertainty inside TSL (see Pages 5 and 6).

^B Numerical linearization parameter: uncertainty not required.

^E Uncertainty is determined using the maximum deviation from linear response applying recatangular distribution and is expressed for the square of the field value.

DASY/EASY - Parameters of Probe: ES3DV3 SN:3124

Calibration Parameter Determined in Head Tissue Simulating Media

f [MHz]	Validity [MHz] ^c	Permittivity	Conductivity	ConvF X	ConvF Y	ConvF Z	Alpha	Depth Unc (k=2)
835	± 50 / ± 100	41.5 ± 5%	0.90 ± 5%	5.89	5.89	5.89	0.97	1.07 ± 11.0%
1810	± 50 / ± 100	40.0 ± 5%	1.40 ± 5%	4.89	4.89	4.89	0.49	1.54 ± 11.0%
1950	± 50 / ± 100	40.0 ± 5%	1.40 ± 5%	4.68	4.68	4.68	0.50	1.52 ± 11.0%
2450	± 50 / ± 100	39.2 ± 5%	1.80 ± 5%	4.35	4.35	4.35	0.45	1.78 ± 11.0%

^c The validity of ± 100 MHz only applies for DASY v4.4 and higher (see Page 2). The uncertainty is the RSS of the ConvF uncertainty at calibration frequency and the uncertainty for the indicated frequency band.

DASY/EASY - Parameters of Probe: ES3DV3 SN:3124

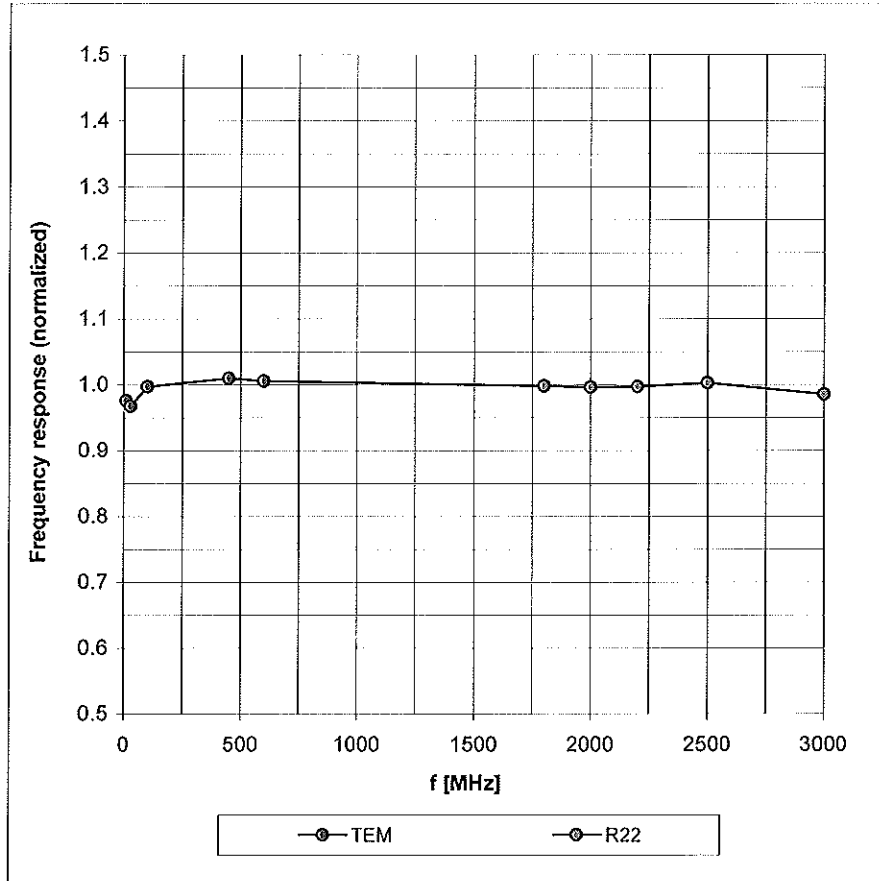
Calibration Parameter Determined in Body Tissue Simulating Media

f [MHz]	Validity [MHz] ^c	Permittivity	Conductivity	ConvF X	ConvF Y	ConvF Z	Alpha	Depth Unc (k=2)
835	± 50 / ± 100	55.2 ± 5%	0.97 ± 5%	5.86	5.86	5.86	0.96	1.11 ± 11.0%
1810	± 50 / ± 100	53.3 ± 5%	1.52 ± 5%	4.76	4.76	4.76	0.41	1.84 ± 11.0%
1950	± 50 / ± 100	53.3 ± 5%	1.52 ± 5%	4.78	4.78	4.78	0.32	2.33 ± 11.0%
2450	± 50 / ± 100	52.7 ± 5%	1.95 ± 5%	4.19	4.19	4.19	0.69	1.29 ± 11.0%

^c The validity of ± 100 MHz only applies for DASY v4.4 and higher (see Page 2). The uncertainty is the RSS of the ConvF uncertainty at calibration frequency and the uncertainty for the indicated frequency band.

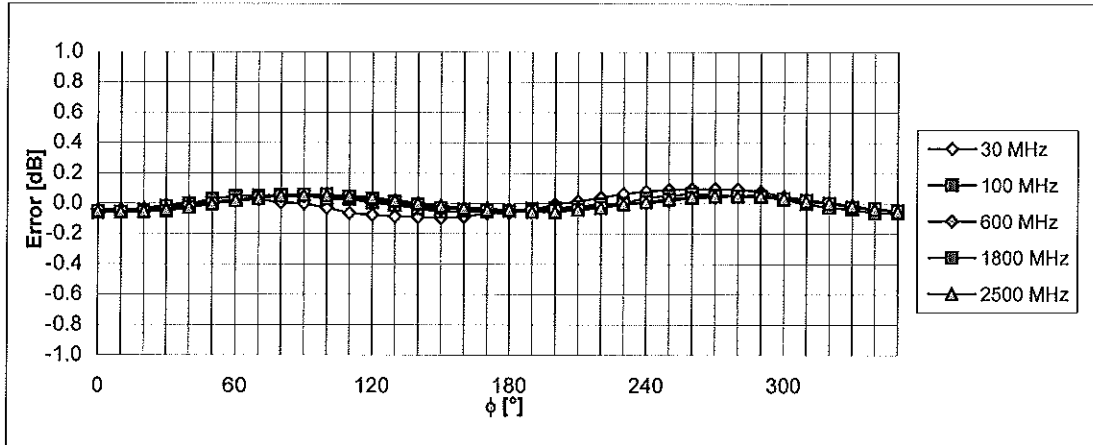
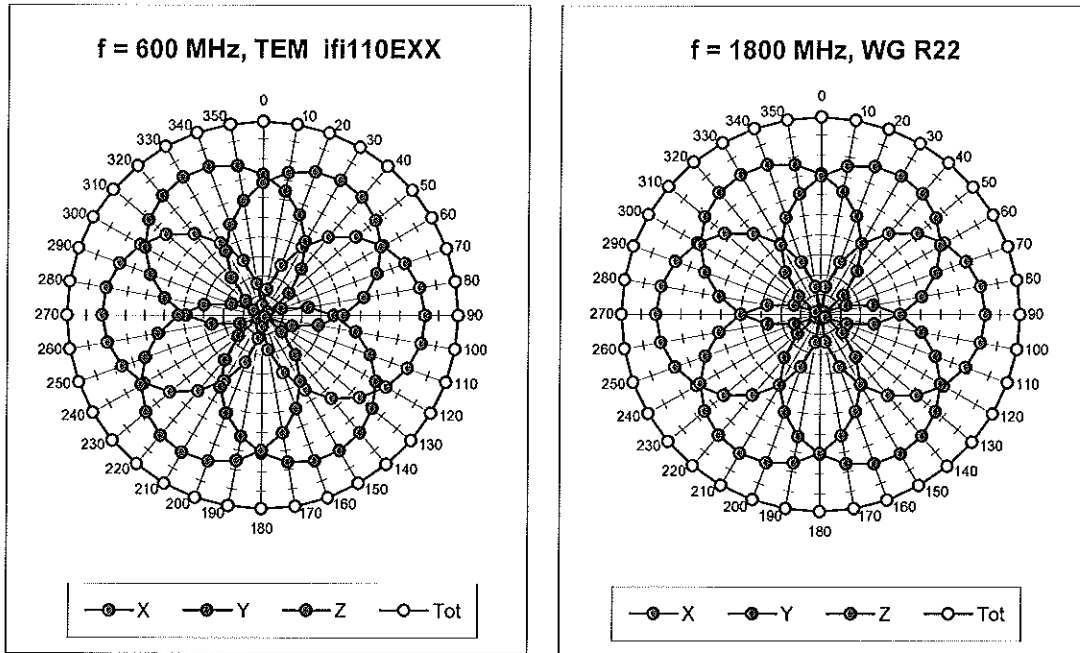
Frequency Response of E-Field

(TEM-Cell:ifi110 EXX, Waveguide: R22)



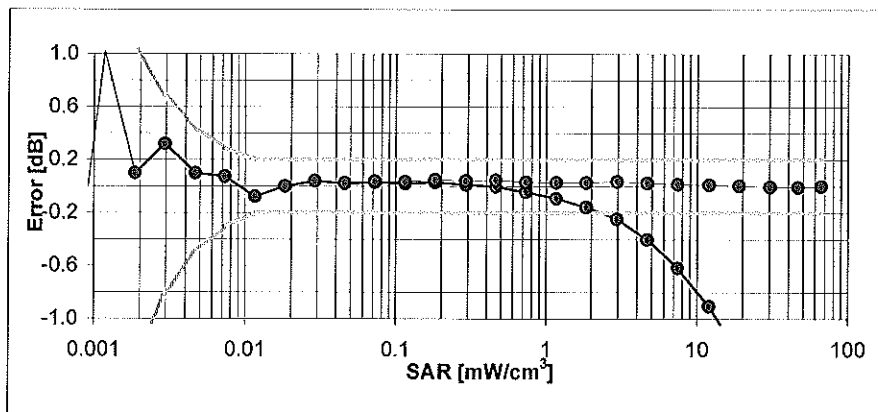
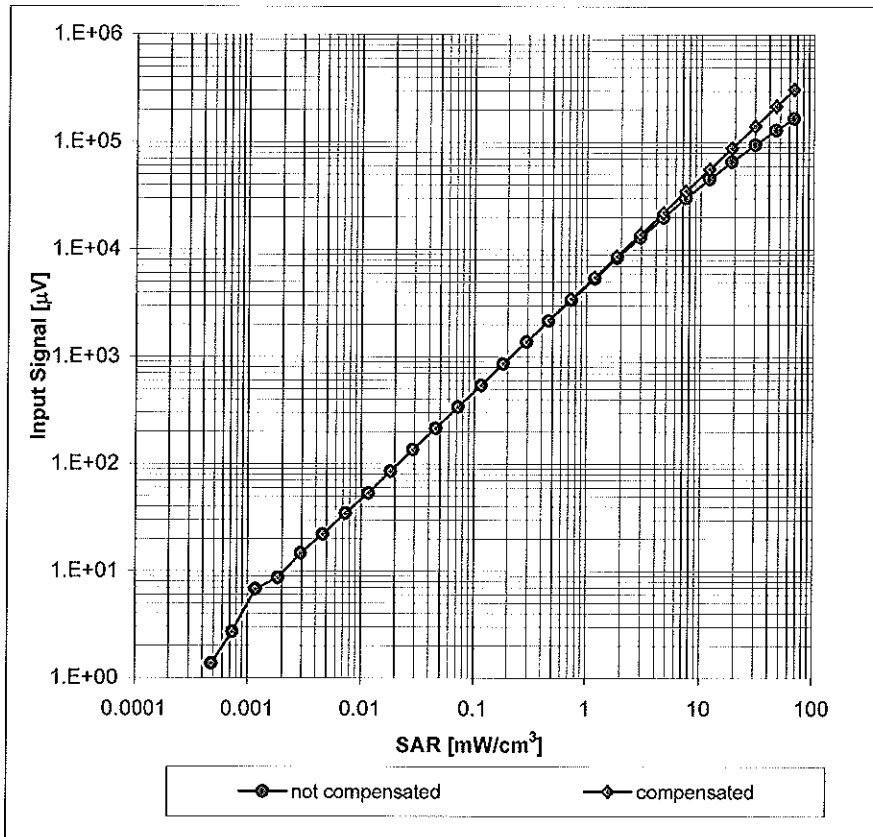
Uncertainty of Frequency Response of E-field: $\pm 6.3\%$ (k=2)

Receiving Pattern (ϕ), $\vartheta = 0^\circ$



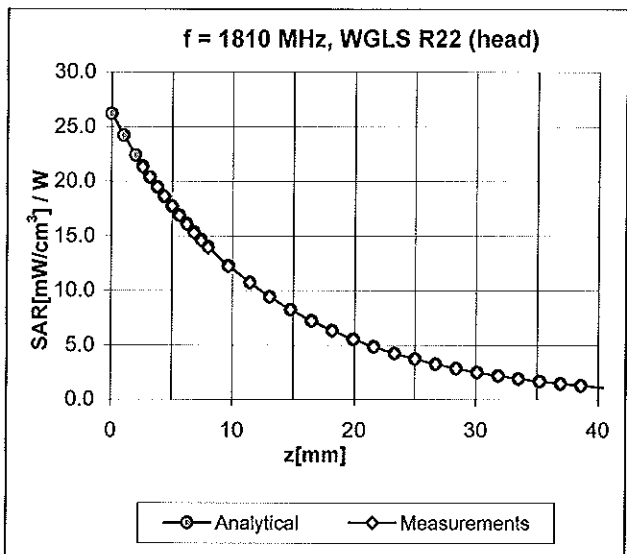
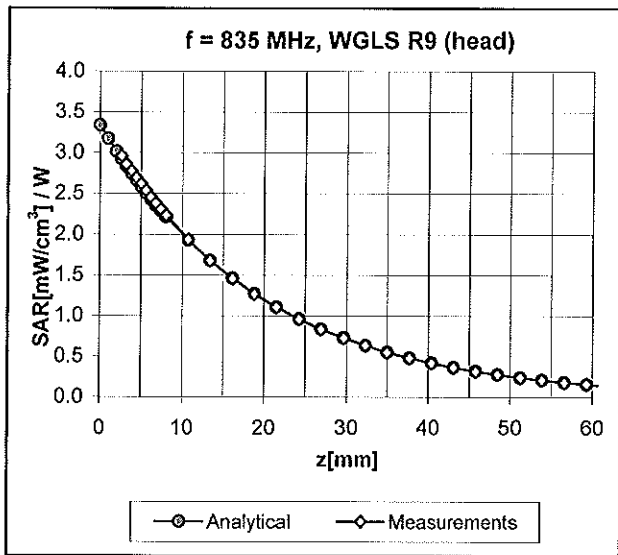
Uncertainty of Axial Isotropy Assessment: $\pm 0.5\%$ ($k=2$)

Dynamic Range f(SAR_{head}) (Waveguide R22, f = 1800 MHz)



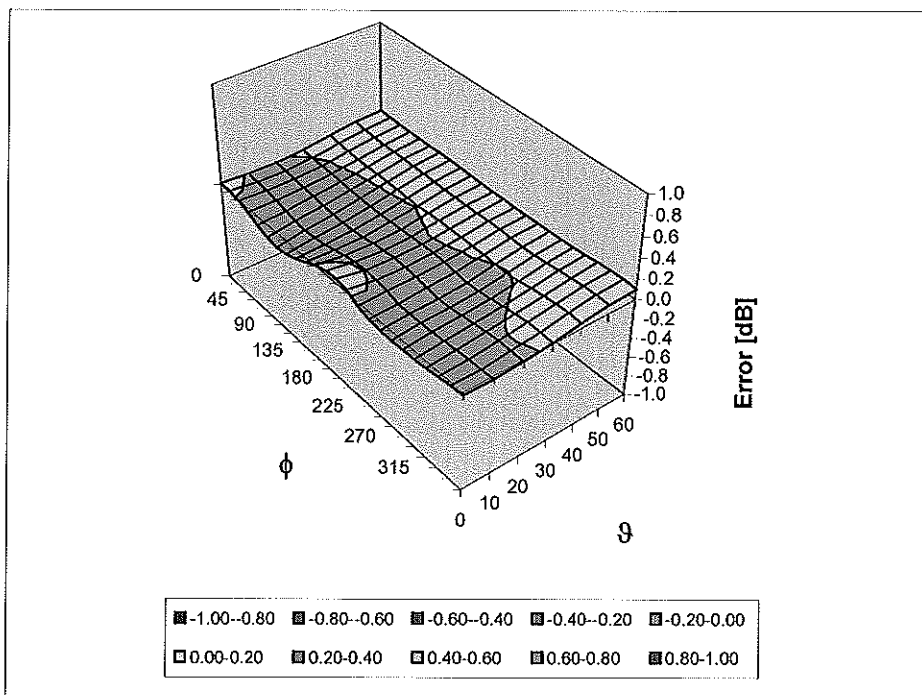
Uncertainty of Linearity Assessment: ± 0.6% (k=2)

Conversion Factor Assessment



Deviation from Isotropy in HSL

Error (ϕ , θ), f = 900 MHz



Uncertainty of Spherical Isotropy Assessment: $\pm 2.6\%$ (k=2)

Other Probe Parameters

Sensor Arrangement	Triangular
Connector Angle (°)	Not applicable
Mechanical Surface Detection Mode	enabled
Optical Surface Detection Mode	disabled
Probe Overall Length	337 mm
Probe Body Diameter	10 mm
Tip Length	10 mm
Tip Diameter	4.0 mm
Probe Tip to Sensor X Calibration Point	2 mm
Probe Tip to Sensor Y Calibration Point	2 mm
Probe Tip to Sensor Z Calibration Point	2 mm
Recommended Measurement Distance from Surface	3 mm



Accredited by the Swiss Accreditation Service (SAS)
The Swiss Accreditation Service is one of the signatories to the EA
Multilateral Agreement for the recognition of calibration certificates

Accreditation No.: **SCS 108**

Client **Motorola MDb**

Certificate No: **ES3-3183_Jul10**

CALIBRATION CERTIFICATE

Object **ES3DV3 - SN:3183**

Calibration procedure(s) **QA CAL-01.v6, QA CAL-23.v3 and QA CAL-25.v2
Calibration procedure for dosimetric E-field probes**

Calibration date: **July 14, 2010**

This calibration certificate documents the traceability to national standards, which realize the physical units of measurements (SI).
The measurements and the uncertainties with confidence probability are given on the following pages and are part of the certificate.

All calibrations have been conducted in the closed laboratory facility: environment temperature (22 ± 3)°C and humidity < 70%.

Calibration Equipment used (M&TE critical for calibration)

Primary Standards	ID #	Cal Date (Certificate No.)	Scheduled Calibration
Power meter E4419B	GB41293874	1-Apr-10 (No. 217-01136)	Apr-11
Power sensor E4412A	MY41495277	1-Apr-10 (No. 217-01136)	Apr-11
Power sensor E4412A	MY41498087	1-Apr-10 (No. 217-01136)	Apr-11
Reference 3 dB Attenuator	SN: S5054 (3c)	30-Mar-10 (No. 217-01159)	Mar-11
Reference 20 dB Attenuator	SN: S5086 (20b)	30-Mar-10 (No. 217-01161)	Mar-11
Reference 30 dB Attenuator	SN: S5129 (30b)	30-Mar-10 (No. 217-01160)	Mar-11
Reference Probe ES3DV2	SN: 3013	30-Dec-09 (No. ES3-3013_Dec09)	Dec-10
DAE4	SN: 660	20-Apr-10 (No. DAE4-660_Apr10)	Apr-11
Secondary Standards	ID #	Check Date (in house)	Scheduled Check
RF generator HP 8648C	US3642U01700	4-Aug-99 (in house check Oct-09)	In house check: Oct-11
Network Analyzer HP 8753E	US37390585	18-Oct-01 (in house check Oct-09)	In house check: Oct10

Calibrated by:	Jeton Kastrali	Laboratory Technician	
Approved by:	Katja Pokovic	Technical Manager	

Issued: July 15, 2010

This calibration certificate shall not be reproduced except in full without written approval of the laboratory.



Accredited by the Swiss Accreditation Service (SAS)

The Swiss Accreditation Service is one of the signatories to the EA
Multilateral Agreement for the recognition of calibration certificates

Accreditation No.: **SCS 108**

Glossary:

TSL	tissue simulating liquid
NORM _{x,y,z}	sensitivity in free space
ConvF	sensitivity in TSL / NORM _{x,y,z}
DCP	diode compression point
CF	crest factor (1/duty_cycle) of the RF signal
A, B, C	modulation dependent linearization parameters
Polarization φ	φ rotation around probe axis
Polarization ϑ	ϑ rotation around an axis that is in the plane normal to probe axis (at measurement center), i.e., $\vartheta = 0$ is normal to probe axis

Calibration is Performed According to the Following Standards:

- IEEE Std 1528-2003, "IEEE Recommended Practice for Determining the Peak Spatial-Averaged Specific Absorption Rate (SAR) in the Human Head from Wireless Communications Devices: Measurement Techniques", December 2003
- IEC 62209-1, "Procedure to measure the Specific Absorption Rate (SAR) for hand-held devices used in close proximity to the ear (frequency range of 300 MHz to 3 GHz)", February 2005

Methods Applied and Interpretation of Parameters:

- NORM_{x,y,z}**: Assessed for E-field polarization $\vartheta = 0$ ($f \leq 900$ MHz in TEM-cell; $f > 1800$ MHz: R22 waveguide). NORM_{x,y,z} are only intermediate values, i.e., the uncertainties of NORM_{x,y,z} does not effect the E²-field uncertainty inside TSL (see below ConvF).
- NORM(f)_{x,y,z}** = NORM_{x,y,z} * frequency_response (see Frequency Response Chart). This linearization is implemented in DASY4 software versions later than 4.2. The uncertainty of the frequency response is included in the stated uncertainty of ConvF.
- DCP_{x,y,z}**: DCP are numerical linearization parameters assessed based on the data of power sweep with CW signal (no uncertainty required). DCP does not depend on frequency nor media.
- A_{x,y,z}; B_{x,y,z}; C_{x,y,z}; VR_{x,y,z}**: A, B, C are numerical linearization parameters assessed based on the data of power sweep for specific modulation signal. The parameters do not depend on frequency nor media. VR is the maximum calibration range expressed in RMS voltage across the diode.
- ConvF and Boundary Effect Parameters**: Assessed in flat phantom using E-field (or Temperature Transfer Standard for $f \leq 800$ MHz) and inside waveguide using analytical field distributions based on power measurements for $f > 800$ MHz. The same setups are used for assessment of the parameters applied for boundary compensation (alpha, depth) of which typical uncertainty values are given. These parameters are used in DASY4 software to improve probe accuracy close to the boundary. The sensitivity in TSL corresponds to NORM_{x,y,z} * ConvF whereby the uncertainty corresponds to that given for ConvF. A frequency dependent ConvF is used in DASY version 4.4 and higher which allows extending the validity from ± 50 MHz to ± 100 MHz.
- Spherical isotropy (3D deviation from isotropy)**: in a field of low gradients realized using a flat phantom exposed by a patch antenna.
- Sensor Offset**: The sensor offset corresponds to the offset of virtual measurement center from the probe tip (on probe axis). No tolerance required.

Probe ES3DV3

SN:3183

Manufactured:	March 25, 2008
Last calibrated:	August 17, 2009
Recalibrated:	July 14, 2010

Calibrated for DASY/EASY Systems

(Note: non-compatible with DASY2 system!)

DASY/EASY - Parameters of Probe: ES3DV3 SN:3183**Basic Calibration Parameters**

	Sensor X	Sensor Y	Sensor Z	Unc (k=2)
Norm ($\mu\text{V}/(\text{V}/\text{m})^2$) ^A	1.21	1.15	1.07	$\pm 10.1\%$
DCP (mV) ^B	88.6	86.9	89.5	

Modulation Calibration Parameters

UID	Communication System Name	PAR		A dB	B dBuV	C	VR mV	Unc ^E (k=2)
10000	CW	0.00	X	0.00	0.00	1.00	300.0	$\pm 1.5\%$
			Y	0.00	0.00	1.00	300.0	
			Z	0.00	0.00	1.00	300.0	

The reported uncertainty of measurement is stated as the standard uncertainty of measurement multiplied by the coverage factor $k=2$, which for a normal distribution corresponds to a coverage probability of approximately 95%.

^A The uncertainties of NormX,Y,Z do not affect the E^2 -field uncertainty inside TSL. (see Pages 5 and 6).

^B Numerical linearization parameter; uncertainty not required.

^E Uncertainty is determined using the maximum deviation from linear response applying rectangular distribution and is expressed for the square of the field value.

DASY/EASY - Parameters of Probe: ES3DV3 SN:3183

Calibration Parameter Determined in Head Tissue Simulating Media

f [MHz]	Validity [MHz] ^c	Permittivity	Conductivity	ConvF X	ConvF Y	ConvF Z	Alpha	Depth Unc (k=2)
835	± 50 / ± 100	41.5 ± 5%	0.90 ± 5%	6.11	6.11	6.11	0.99	1.04 ± 11.0%
1810	± 50 / ± 100	40.0 ± 5%	1.40 ± 5%	5.05	5.05	5.05	0.58	1.33 ± 11.0%
1950	± 50 / ± 100	40.0 ± 5%	1.40 ± 5%	4.82	4.82	4.82	0.54	1.37 ± 11.0%
2450	± 50 / ± 100	39.2 ± 5%	1.80 ± 5%	4.49	4.49	4.49	0.44	1.70 ± 11.0%

^c The validity of ± 100 MHz only applies for DASY v4.4 and higher (see Page 2). The uncertainty is the RSS of the ConvF uncertainty at calibration frequency and the uncertainty for the indicated frequency band.

DASY/EASY - Parameters of Probe: ES3DV3 SN:3183

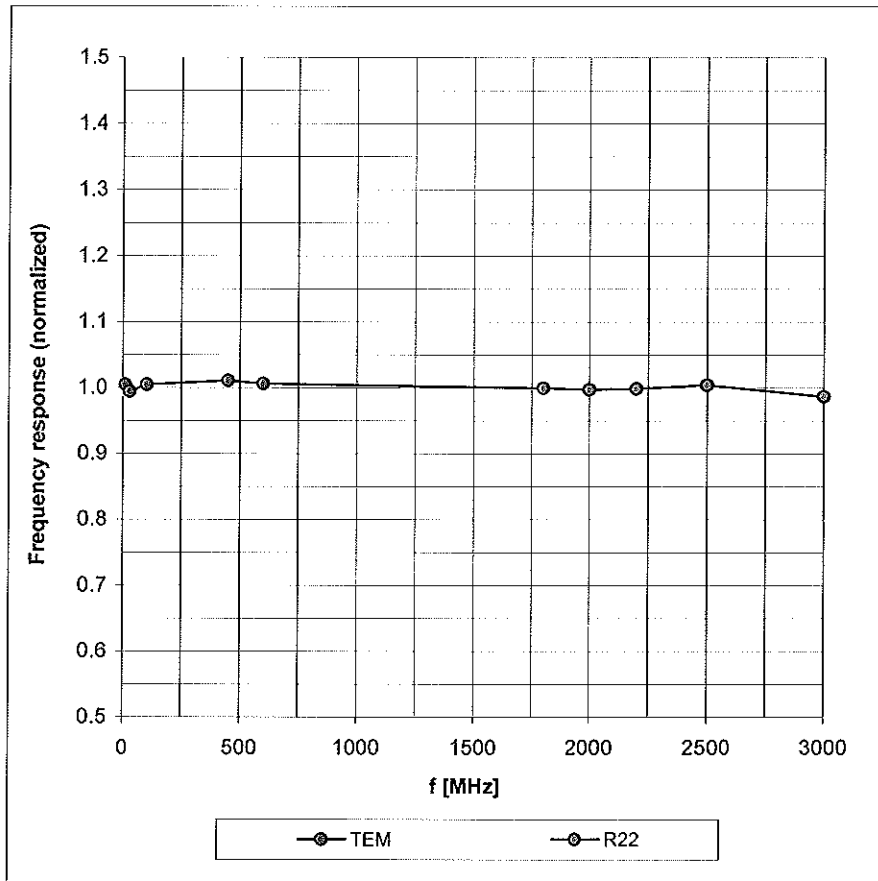
Calibration Parameter Determined in Body Tissue Simulating Media

f [MHz]	Validity [MHz] ^c	Permittivity	Conductivity	ConvF X	ConvF Y	ConvF Z	Alpha	Depth Unc (k=2)
835	± 50 / ± 100	55.2 ± 5%	0.97 ± 5%	6.15	6.15	6.15	0.95	1.10 ± 11.0%
1810	± 50 / ± 100	53.3 ± 5%	1.52 ± 5%	4.84	4.84	4.84	0.39	1.87 ± 11.0%
1950	± 50 / ± 100	53.3 ± 5%	1.52 ± 5%	4.86	4.86	4.86	0.28	2.80 ± 11.0%
2450	± 50 / ± 100	52.7 ± 5%	1.95 ± 5%	4.36	4.36	4.36	0.69	1.31 ± 11.0%

^c The validity of ± 100 MHz only applies for DASY v4.4 and higher (see Page 2). The uncertainty is the RSS of the ConvF uncertainty at calibration frequency and the uncertainty for the indicated frequency band.

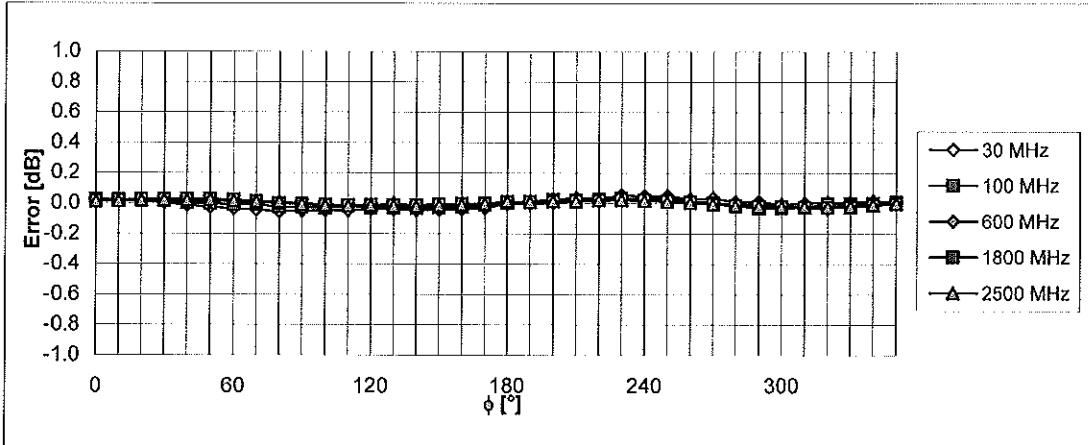
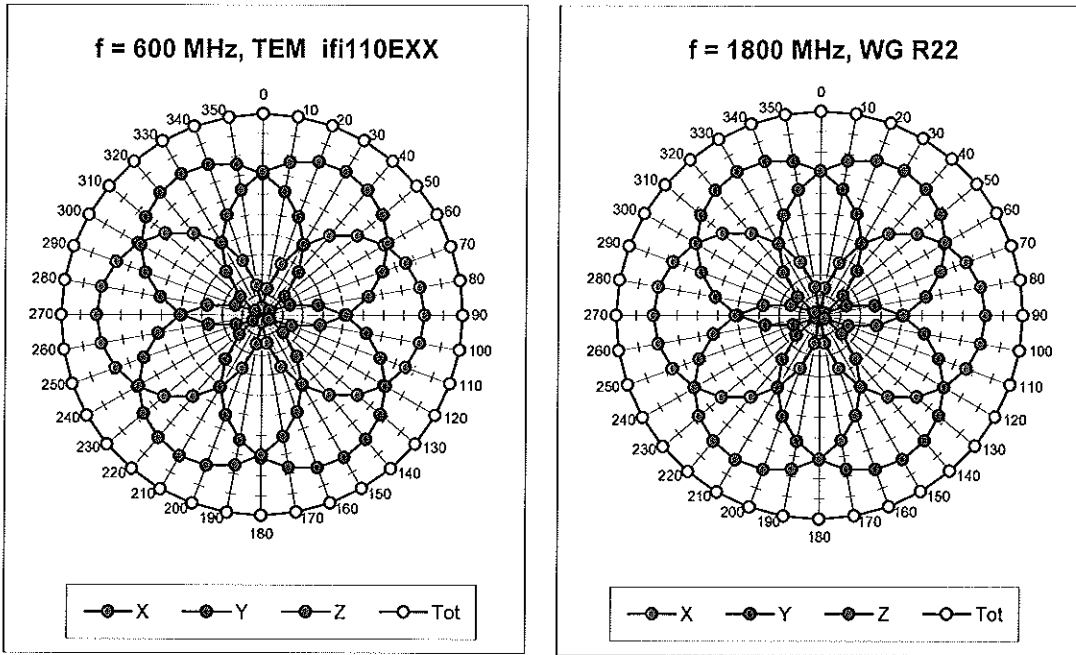
Frequency Response of E-Field

(TEM-Cell:ifi110 EXX, Waveguide: R22)



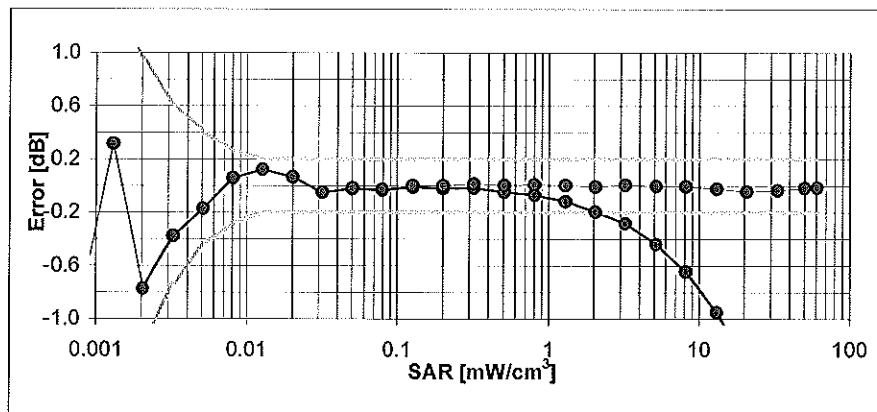
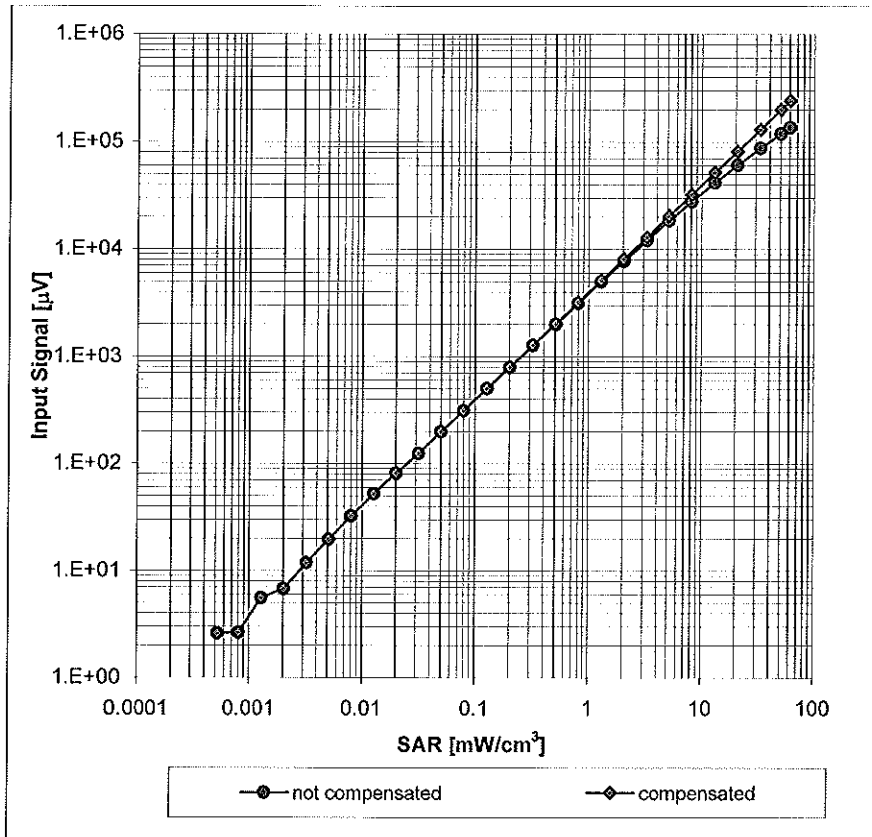
Uncertainty of Frequency Response of E-field: $\pm 6.3\%$ ($k=2$)

Receiving Pattern (ϕ), $\vartheta = 0^\circ$



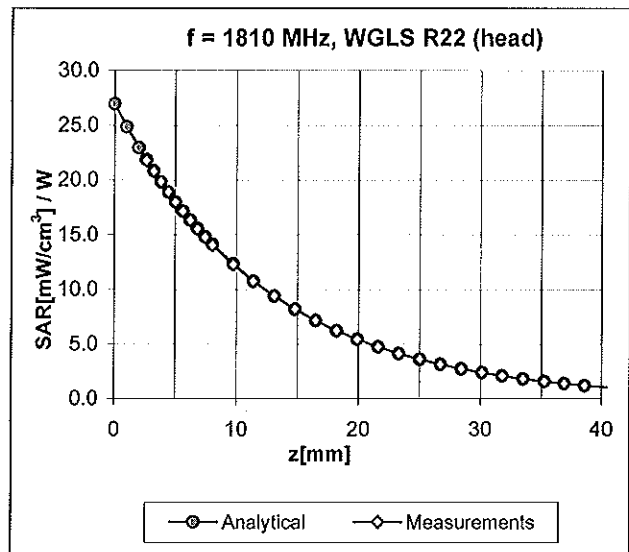
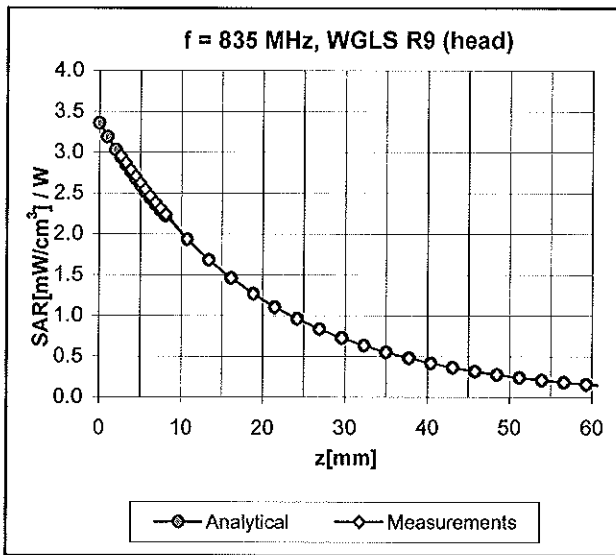
Uncertainty of Axial Isotropy Assessment: $\pm 0.5\%$ (k=2)

Dynamic Range $f(\text{SAR}_{\text{head}})$ (Waveguide R22, $f = 1800 \text{ MHz}$)



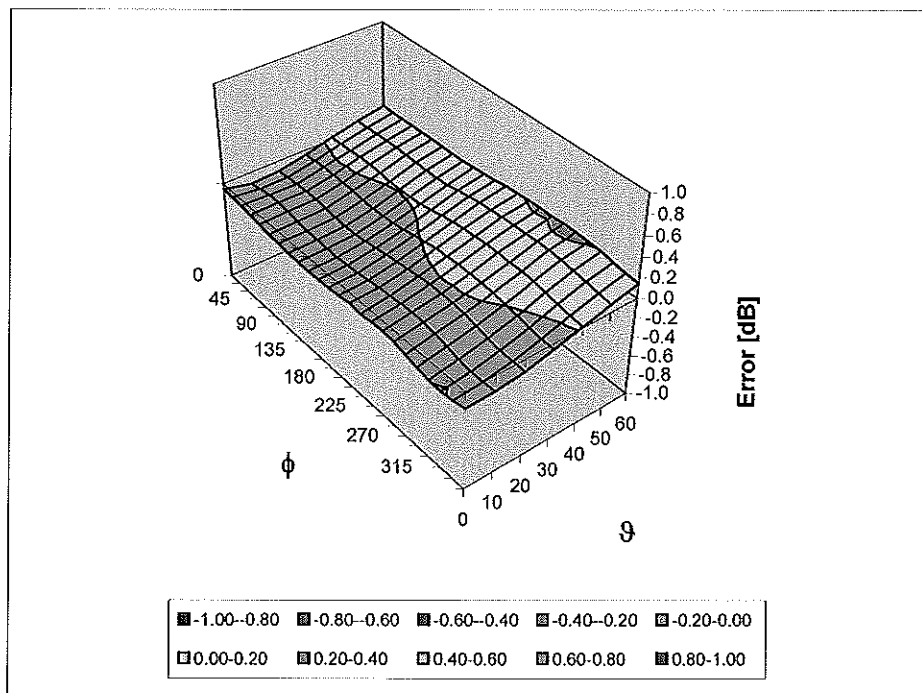
Uncertainty of Linearity Assessment: $\pm 0.6\%$ ($k=2$)

Conversion Factor Assessment



Deviation from Isotropy in HSL

Error (ϕ , θ), f = 900 MHz



Uncertainty of Spherical Isotropy Assessment: $\pm 2.6\%$ (k=2)

Other Probe Parameters

Sensor Arrangement	Triangular
Connector Angle (°)	Not applicable
Mechanical Surface Detection Mode	enabled
Optical Surface Detection Mode	disabled
Probe Overall Length	337 mm
Probe Body Diameter	10 mm
Tip Length	10 mm
Tip Diameter	4.0 mm
Probe Tip to Sensor X Calibration Point	2 mm
Probe Tip to Sensor Y Calibration Point	2 mm
Probe Tip to Sensor Z Calibration Point	2 mm
Recommended Measurement Distance from Surface	3 mm

Appendix 6

Measurement Uncertainty Budget

<i>a</i>	<i>b</i>	<i>c</i>	<i>d</i>	$e = f(d,k)$	<i>f</i>	<i>g</i>	$h = c \times f / e$	$i = c \times g / e$	<i>k</i>
Uncertainty Component	IEEE 1528 section	Tol. (\pm %)	Prob Dist	Div.	c_i (1 g)	c_i (10 g)	1 g u_i (\pm %)	10 g u_i (\pm %)	v_i
Measurement System									
Probe Calibration	E.2.1	5.9	N	1.00	1	1	5.9	5.9	∞
Axial Isotropy	E.2.2	4.7	R	1.73	0.707	0.707	1.9	1.9	∞
Hemispherical Isotropy	E.2.2	9.6	R	1.73	0.707	0.707	3.9	3.9	∞
Boundary Effect	E.2.3	1.0	R	1.73	1	1	0.6	0.6	∞
Linearity	E.2.4	4.7	R	1.73	1	1	2.7	2.7	∞
System Detection Limits	E.2.5	1.0	R	1.73	1	1	0.6	0.6	∞
Readout Electronics	E.2.6	0.3	N	1.00	1	1	0.3	0.3	∞
Response Time	E.2.7	1.1	R	1.73	1	1	0.6	0.6	∞
Integration Time	E.2.8	1.1	R	1.73	1	1	0.6	0.6	∞
RF Ambient Conditions - Noise	E.6.1	3.0	R	1.73	1	1	1.7	1.7	∞
RF Ambient Conditions - Reflections	E.6.1	0.0	R	1.73	1	1	0.0	0.0	∞
Probe Positioner Mech. Tolerance	E.6.2	0.4	R	1.73	1	1	0.2	0.2	∞
Probe Positioning w.r.t Phantom	E.6.3	1.4	R	1.73	1	1	0.8	0.8	∞
Max. SAR Evaluation (ext., int., avg.)	E.5	3.4	R	1.73	1	1	2.0	2.0	∞
Test sample Related									
Test Sample Positioning	E.4.2	3.2	N	1.00	1	1	3.2	3.2	29
Device Holder Uncertainty	E.4.1	4.0	N	1.00	1	1	4.0	4.0	8
SAR drift	6.6.2	5.0	R	1.73	1	1	2.9	2.9	∞
Phantom and Tissue Parameters									
Phantom Uncertainty	E.3.1	4.0	R	1.73	1	1	2.3	2.3	∞
Liquid Conductivity (target)	E.3.2	5.0	R	1.73	0.64	0.43	1.8	1.2	∞
Liquid Conductivity (measurement)	E.3.3	3.3	N	1.00	0.64	0.43	2.1	1.4	∞
Liquid Permittivity (target)	E.3.2	5.0	R	1.73	0.6	0.49	1.7	1.4	∞
Liquid Permittivity (measurement)	E.3.3	1.9	N	1.00	0.6	0.49	1.1	0.9	∞
Combined Standard Uncertainty									
			RSS				11.1	10.8	411
Expanded Uncertainty (95% CONFIDENCE LEVEL)									
			$k=2$				22.2	21.6	

Appendix 7

Dipole Characterization Certificates

Certification of System Performance Check Targets

FCD-1806, rev-1

-Historical Data-

835 MHz	
Reference Target:	9.56 (W/kg)
Measurement Uncertainty (k=1):	9.0%
Measurement Period:	26March09 - 15Mar10
# of tests performed:	244
Grand Average:	9.59 (W/kg)
% Delta (Average - Reference Target)	0.3%
Is % Delta <= Expanded Measurement Uncertainty (k=2)?	Yes
Accept/Reject <u>Average</u> as new system performance check target?	ACCEPT
<u>Applies to Dipole SN's:</u> 432tr, 417tr, 420tr, 422tr, 423tr, 424tr, 425tr, 431tr, 434tr, 421tr, 436tr	

-New System Performance Check Targets- per WI-0396

(based on analysis of historical data)

Frequency	SAR Target (W/kg)	Permittivity Target +/- %	Conductivity (S/m) Target +/- %
835 MHz	9.59	41.5 +/- 5%	0.90 +/- 5%


-Approvals-

Submitted by: Date:

Signed: 

Comments:

Approved by: Date:

Signed: 

Comments:



Accredited by the Swiss Accreditation Service (SAS)
The Swiss Accreditation Service is one of the signatories to the EA
Multilateral Agreement for the recognition of calibration certificates

Accreditation No.: **SCS 108**

Client **SPEAG Replacement**

Certificate No: **D835V2-4d003_Jun10**

CALIBRATION CERTIFICATE

Object **D835V2 - SN: 4d003**

Calibration procedure(s) **QA CAL-05.v7
Calibration procedure for dipole validation kits**

Calibration date: **June 21, 2010**

This calibration certificate documents the traceability to national standards, which realize the physical units of measurements (SI).
The measurements and the uncertainties with confidence probability are given on the following pages and are part of the certificate.

All calibrations have been conducted in the closed laboratory facility: environment temperature (22 ± 3)°C and humidity < 70%.

Calibration Equipment used (M&TE critical for calibration)

Primary Standards	ID #	Cal Date (Certificate No.)	Scheduled Calibration
Power meter EPM-442A	GB37480704	06-Oct-09 (No. 217-01086)	Oct-10
Power sensor HP 8481A	US37292783	06-Oct-09 (No. 217-01086)	Oct-10
Reference 20 dB Attenuator	SN: 5086 (20g)	30-Mar-10 (No. 217-01158)	Mar-11
Type-N mismatch combination	SN: 5047.2 / 06327	30-Mar-10 (No. 217-01162)	Mar-11
Reference Probe ES3DV3	SN: 3205	30-Apr-10 (No. ES3-3205_Apr10)	Apr-11
DAE4	SN: 601	02-Mar-10 (No. DAE4-601_Mar10)	Mar-11
DAE4	SN: 601	10-Jun-10 (No. DAE4-601_Jun10)	Jun-11
Secondary Standards	ID #	Check Date (in house)	Scheduled Check
Power sensor HP 8481A	MY41092317	18-Oct-02 (in house check Oct-09)	In house check: Oct-11
RF generator R&S SMT-06	100005	4-Aug-99 (in house check Oct-09)	In house check: Oct-11
Network Analyzer HP 8753E	US37390585 S4206	18-Oct-01 (in house check Oct-09)	In house check: Oct-10

Calibrated by: **Jeton Kastrall** **Laboratory Technician** **Signature**

Approved by: **Katja Pokovic** **Technical Manager**

Issued: September 24, 2010

This calibration certificate shall not be reproduced except in full without written approval of the laboratory.



Accredited by the Swiss Accreditation Service (SAS)
The Swiss Accreditation Service is one of the signatories to the EA
Multilateral Agreement for the recognition of calibration certificates

Accreditation No.: **SCS 108**

Glossary:

TSL	tissue simulating liquid
ConvF	sensitivity in TSL / NORM x,y,z
N/A	not applicable or not measured

Calibration is Performed According to the Following Standards:

- a) IEEE Std 1528-2003, "IEEE Recommended Practice for Determining the Peak Spatial-Averaged Specific Absorption Rate (SAR) in the Human Head from Wireless Communications Devices: Measurement Techniques", December 2003
- b) IEC 62209-1, "Procedure to measure the Specific Absorption Rate (SAR) for hand-held devices used in close proximity to the ear (frequency range of 300 MHz to 3 GHz)", February 2005
- c) Federal Communications Commission Office of Engineering & Technology (FCC OET), "Evaluating Compliance with FCC Guidelines for Human Exposure to Radiofrequency Electromagnetic Fields; Additional Information for Evaluating Compliance of Mobile and Portable Devices with FCC Limits for Human Exposure to Radiofrequency Emissions", Supplement C (Edition 01-01) to Bulletin 65

Additional Documentation:

- d) DASY4/5 System Handbook

Methods Applied and Interpretation of Parameters:

- *Measurement Conditions:* Further details are available from the Validation Report at the end of the certificate. All figures stated in the certificate are valid at the frequency indicated.
- *Antenna Parameters with TSL:* The dipole is mounted with the spacer to position its feed point exactly below the center marking of the flat phantom section, with the arms oriented parallel to the body axis.
- *Feed Point Impedance and Return Loss:* These parameters are measured with the dipole positioned under the liquid filled phantom. The impedance stated is transformed from the measurement at the SMA connector to the feed point. The Return Loss ensures low reflected power. No uncertainty required.
- *Electrical Delay:* One-way delay between the SMA connector and the antenna feed point. No uncertainty required.
- *SAR measured:* SAR measured at the stated antenna input power.
- *SAR normalized:* SAR as measured, normalized to an input power of 1 W at the antenna connector.
- *SAR for nominal TSL parameters:* The measured TSL parameters are used to calculate the nominal SAR result.

Measurement Conditions

DASY system configuration, as far as not given on page 1.

DASY Version	DASY5	V52.2
Extrapolation	Advanced Extrapolation	
Phantom	Modular Flat Phantom V4.9	
Distance Dipole Center - TSL	15 mm	with Spacer
Zoom Scan Resolution	dx, dy, dz = 5 mm	
Frequency	835 MHz \pm 1 MHz	

Head TSL parameters

The following parameters and calculations were applied.

	Temperature	Permittivity	Conductivity
Nominal Head TSL parameters	22.0 °C	41.5	0.90 mho/m
Measured Head TSL parameters	(22.0 \pm 0.2) °C	41.2 \pm 6 %	0.89 mho/m \pm 6 %
Head TSL temperature during test	(22.0 \pm 0.2) °C	----	----

SAR result with Head TSL

SAR averaged over 1 cm³ (1 g) of Head TSL	Condition	
SAR measured	250 mW input power	2.37 mW / g
SAR normalized	normalized to 1W	9.48 mW / g
SAR for nominal Head TSL parameters	normalized to 1W	9.54 mW /g \pm 17.0 % (k=2)

SAR averaged over 10 cm³ (10 g) of Head TSL	condition	
SAR measured	250 mW input power	1.55 mW / g
SAR normalized	normalized to 1W	6.20 mW / g
SAR for nominal Head TSL parameters	normalized to 1W	6.23 mW /g \pm 16.5 % (k=2)

Appendix

Antenna Parameters with Head TSL

Impedance, transformed to feed point	52.1 Ω - 3.9 j Ω
Return Loss	- 27.3 dB

General Antenna Parameters and Design

Electrical Delay (one direction)	1.390 ns
----------------------------------	----------

After long term use with 100W radiated power, only a slight warming of the dipole near the feedpoint can be measured.

The dipole is made of standard semirigid coaxial cable. The center conductor of the feeding line is directly connected to the second arm of the dipole. The antenna is therefore short-circuited for DC-signals.

No excessive force must be applied to the dipole arms, because they might bend or the soldered connections near the feedpoint may be damaged.

Additional EUT Data

Manufactured by	SPEAG
Manufactured on	July 11, 2003

DASY5 Validation Report for Head TSL

Date/Time: 21.06.2010 10:59:08

DUT: Dipole 835 MHz; Type: D835V2; Serial: D835V2 - SN:4d003

Communication System: CW; Frequency: 835 MHz; Duty Cycle: 1:1

Medium: HSL900

Medium parameters used: $f = 835$ MHz; $\sigma = 0.89$ mho/m; $\epsilon_r = 41.2$; $\rho = 1000$ kg/m³

Phantom section: Flat Section

Measurement Standard: DASY5 (IEEE/IEC/ANSI C63.19-2007)

DASY5 Configuration:

- Probe: ES3DV3 - SN3205; ConvF(6.03, 6.03, 6.03); Calibrated: 30.04.2010
- Sensor-Surface: 3mm (Mechanical Surface Detection)
- Electronics: DAE4 Sn601; Calibrated: 10.06.2010
- Phantom: Flat Phantom 4.9L; Type: QD000P49AA; Serial: 1001
- Measurement SW: DASY52, V52.2 Build 0, Version 52.2.0 (163)
- Postprocessing SW: SEMCAD X, V14.2 Build 2, Version 14.2.2 (1685)

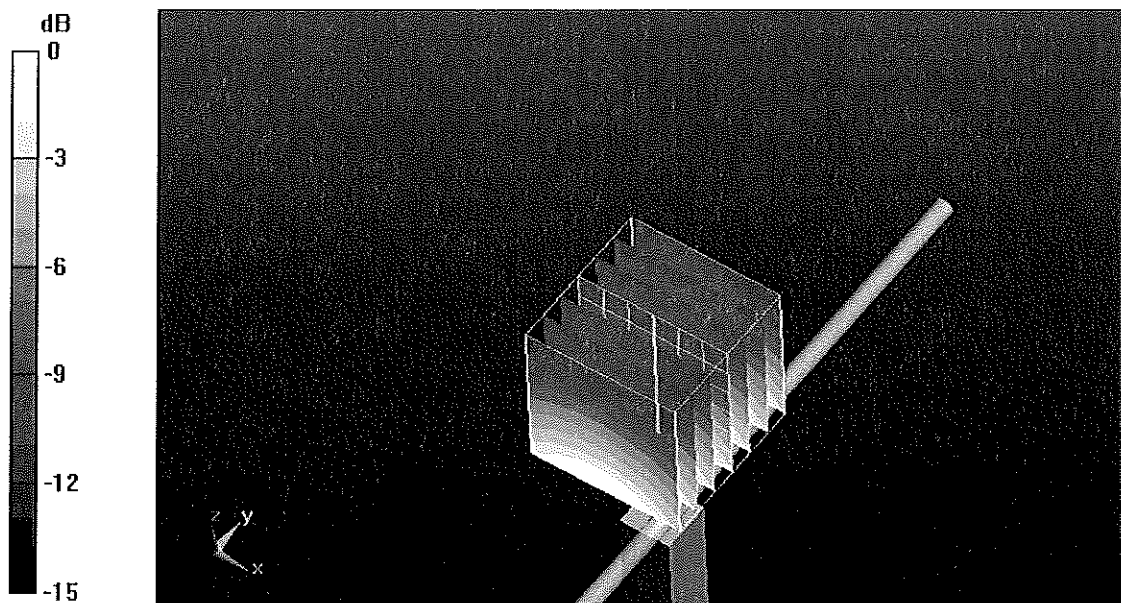
Pin=250 mW /d=15mm, dist=3.0mm (ES-Probe)/Zoom Scan (7x7x7)/Cube 0: Measurement grid: dx=5mm, dy=5mm, dz=5mm

Reference Value = 57 V/m; Power Drift = 0.044 dB

Peak SAR (extrapolated) = 3.58 W/kg

SAR(1 g) = 2.37 mW/g; SAR(10 g) = 1.55 mW/g

Maximum value of SAR (measured) = 2.75 mW/g



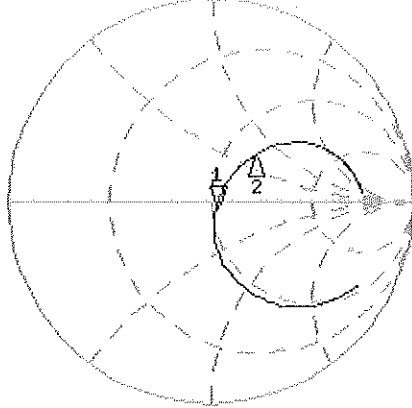
0 dB = 2.75mW/g

Impedance Measurement Plot for Head TSL

21 Jun 2010 09:53:05

CH1 S11 1 U FS 1: 52.096 Ω -3.8633 Ω 49.338 pF 835.000 000 MHz

*
Del
Cor



CH1 Markers
2: 67.125 Ω
34.242 Ω
900.000 MHz

Avg
15

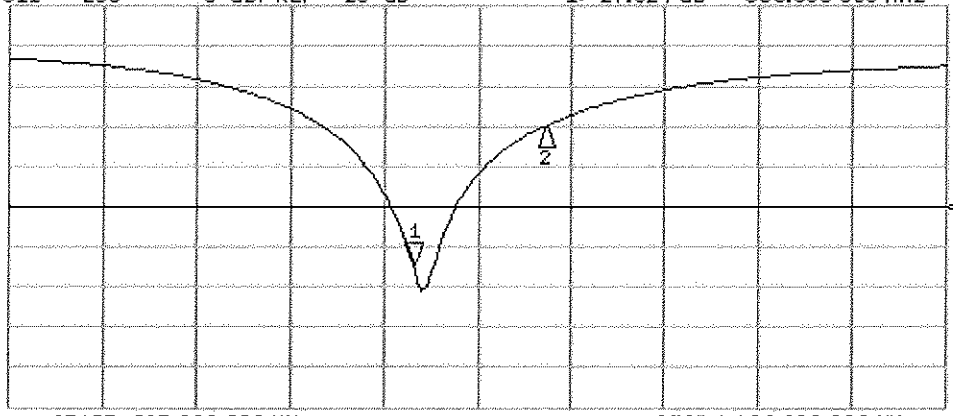
↑

CH2 S11 LOG 5 dB/REF -20 dB 1: -27.324 dB 835.000 000 MHz

Cor

Avg
15

↑



CH2 Markers
2: -10.068 dB
900.000 MHz

START 635.000 000 MHz

STOP 1 100.000 000 MHz

END OF REPORT