



## ***Appendix B. Plots of SAR Measurement***

The plots are shown as follows.

**#01 GSM850\_Right Cheek\_Ch251**

**DUT: 001805**

Communication System: GSM850; Frequency: 848.8 MHz; Duty Cycle: 1:8.3

Medium: HSL\_850\_100726 Medium parameters used:  $f = 849$  MHz;  $\sigma = 0.908$  mho/m;  $\epsilon_r = 40.9$ ;  $\rho = 1000$

kg/m<sup>3</sup>

Ambient Temperature : 22.5 ; Liquid Temperature : 21.5

DASY5 Configuration:

- Probe: ET3DV6 - SN1788; ConvF(6.3, 6.3, 6.3); Calibrated: 2009/9/23
- Sensor-Surface: 4mm (Mechanical Surface Detection)
- Electronics: DAE4 Sn778; Calibrated: 2009/9/18
- Phantom: SAM - Front; Type: SAM; Serial: TP-1446
- Measurement SW: DASY5, V5.0 Build 125; SEMCAD X Version 13.4 Build 125

**Ch251/Area Scan (51x121x1):** Measurement grid: dx=15mm, dy=15mm

Maximum value of SAR (interpolated) = 0.749 mW/g

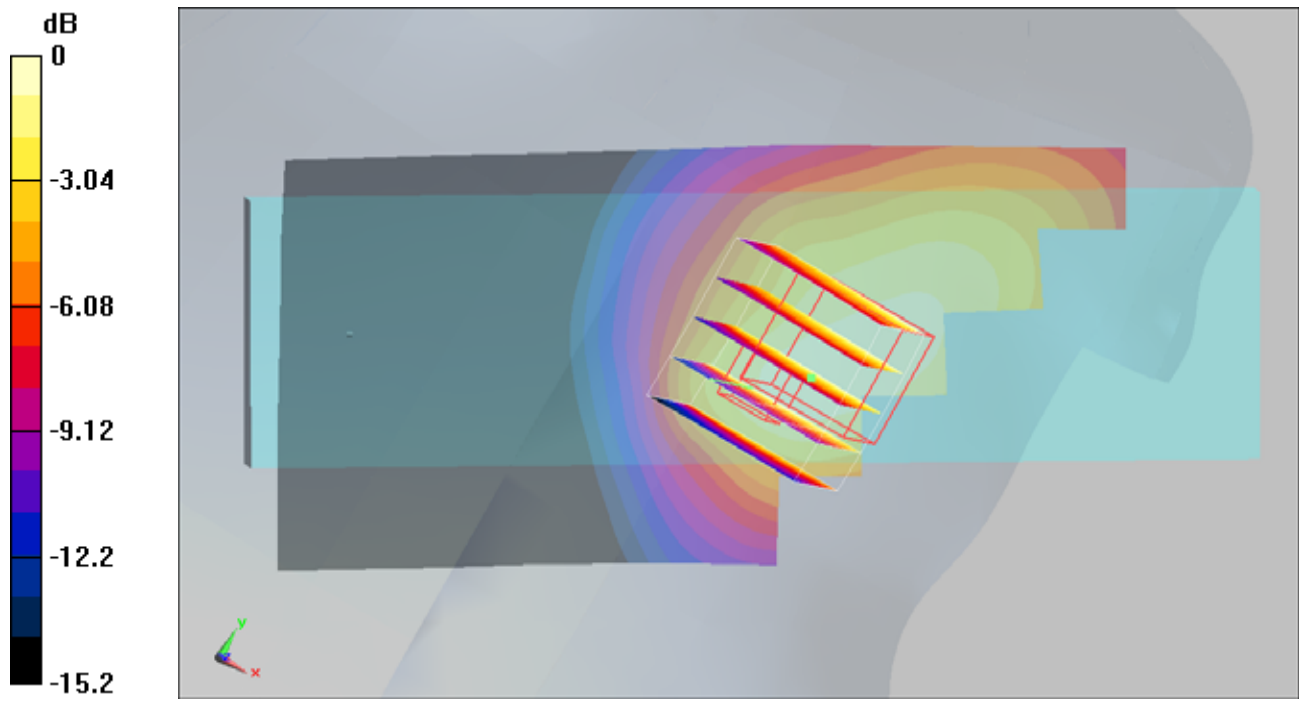
**Ch251/Zoom Scan (5x5x7)/Cube 0:** Measurement grid: dx=8mm, dy=8mm, dz=5mm

Reference Value = 2.81 V/m; Power Drift = 0.108 dB

Peak SAR (extrapolated) = 1.81 W/kg

**SAR(1 g) = 0.709 mW/g; SAR(10 g) = 0.457 mW/g**

Maximum value of SAR (measured) = 0.772 mW/g



0 dB = 0.772mW/g

## #02 GSM850\_Right Tilted\_Ch251

**DUT: 001805**

Communication System: GSM850; Frequency: 848.8 MHz; Duty Cycle: 1:8.3

Medium: HSL\_850\_100726 Medium parameters used:  $f = 849$  MHz;  $\sigma = 0.908$  mho/m;  $\epsilon_r = 40.9$ ;  $\rho = 1000$

kg/m<sup>3</sup>

Ambient Temperature : 22.5 ; Liquid Temperature : 21.5

DASY5 Configuration:

- Probe: ET3DV6 - SN1788; ConvF(6.3, 6.3, 6.3); Calibrated: 2009/9/23
- Sensor-Surface: 4mm (Mechanical Surface Detection)
- Electronics: DAE4 Sn778; Calibrated: 2009/9/18
- Phantom: SAM - Front; Type: SAM; Serial: TP-1446
- Measurement SW: DASY5, V5.0 Build 125; SEMCAD X Version 13.4 Build 125

**Ch251/Area Scan (51x131x1):** Measurement grid: dx=15mm, dy=15mm

Maximum value of SAR (interpolated) = 0.170 mW/g

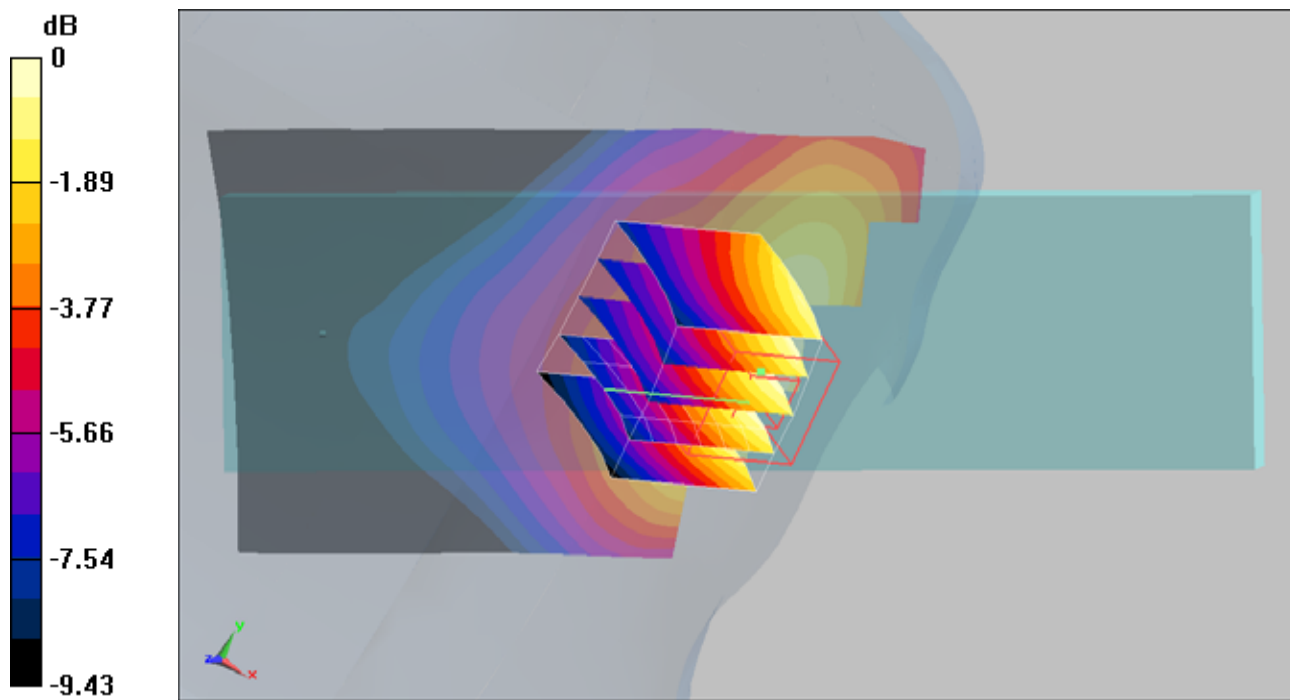
**Ch251/Zoom Scan (5x5x7)/Cube 0:** Measurement grid: dx=8mm, dy=8mm, dz=5mm

Reference Value = 4.61 V/m; Power Drift = 0.018 dB

Peak SAR (extrapolated) = 0.203 W/kg

**SAR(1 g) = 0.157 mW/g; SAR(10 g) = 0.114 mW/g**

Maximum value of SAR (measured) = 0.167 mW/g



**#03 GSM850\_Left Cheek\_Ch251**

**DUT: 001805**

Communication System: GSM850; Frequency: 848.8 MHz; Duty Cycle: 1:8.3

Medium: HSL\_850\_100726 Medium parameters used:  $f = 849$  MHz;  $\sigma = 0.908$  mho/m;  $\epsilon_r = 40.9$ ;  $\rho = 1000$

kg/m<sup>3</sup>

Ambient Temperature : 22.5 ; Liquid Temperature : 21.5

DASY5 Configuration:

- Probe: ET3DV6 - SN1788; ConvF(6.3, 6.3, 6.3); Calibrated: 2009/9/23
- Sensor-Surface: 4mm (Mechanical Surface Detection)
- Electronics: DAE4 Sn778; Calibrated: 2009/9/18
- Phantom: SAM - Front; Type: SAM; Serial: TP-1446
- Measurement SW: DASY5, V5.0 Build 125; SEMCAD X Version 13.4 Build 125

**Ch251/Area Scan (51x131x1):** Measurement grid: dx=15mm, dy=15mm

Maximum value of SAR (interpolated) = 1.11 mW/g

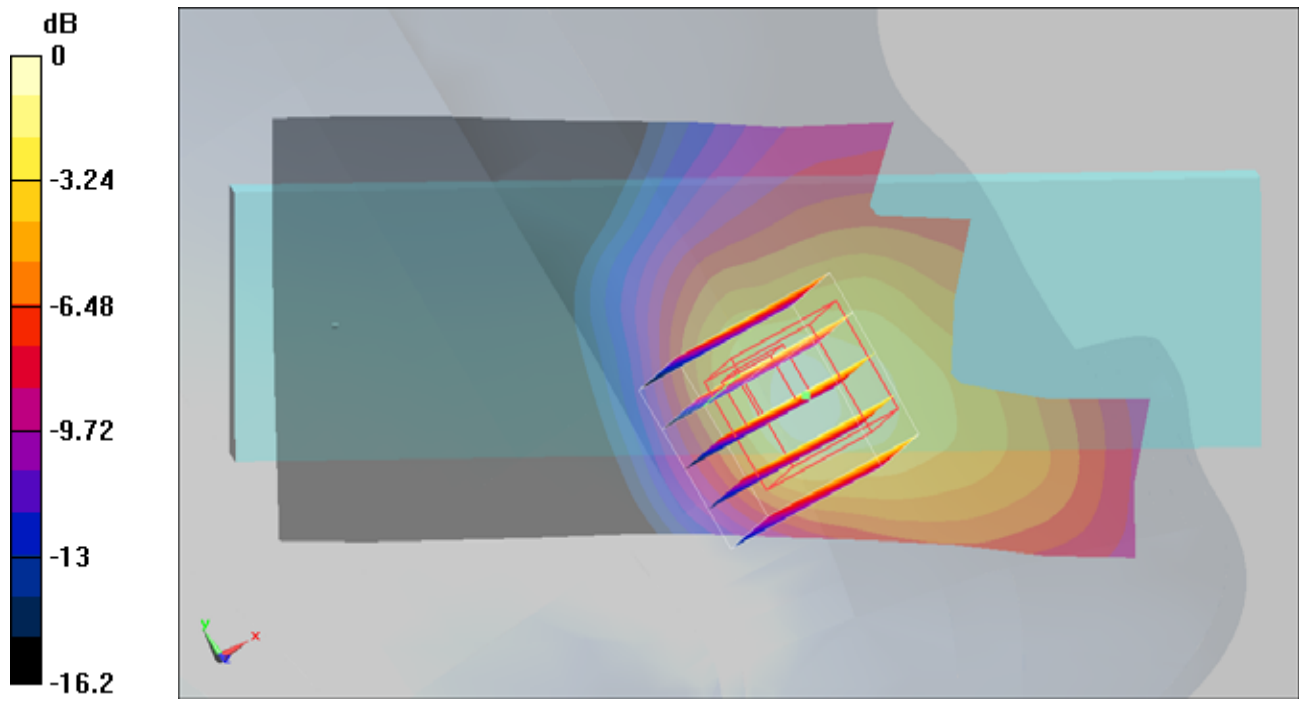
**Ch251/Zoom Scan (5x5x7)/Cube 0:** Measurement grid: dx=8mm, dy=8mm, dz=5mm

Reference Value = 4.14 V/m; Power Drift = -0.101 dB

Peak SAR (extrapolated) = 4.19 W/kg

**SAR(1 g) = 1.24 mW/g; SAR(10 g) = 0.607 mW/g**

Maximum value of SAR (measured) = 1.19 mW/g



0 dB = 1.19mW/g

## #04 GSM850\_Left Tilted\_Ch251

**DUT: 001805**

Communication System: GSM850; Frequency: 848.8 MHz; Duty Cycle: 1:8.3

Medium: HSL\_850\_100726 Medium parameters used:  $f = 849$  MHz;  $\sigma = 0.908$  mho/m;  $\epsilon_r = 40.9$ ;  $\rho = 1000$

kg/m<sup>3</sup>

Ambient Temperature : 22.5 ; Liquid Temperature : 21.5

DASY5 Configuration:

- Probe: ET3DV6 - SN1788; ConvF(6.3, 6.3, 6.3); Calibrated: 2009/9/23
- Sensor-Surface: 4mm (Mechanical Surface Detection)
- Electronics: DAE4 Sn778; Calibrated: 2009/9/18
- Phantom: SAM - Front; Type: SAM; Serial: TP-1446
- Measurement SW: DASY5, V5.0 Build 125; SEMCAD X Version 13.4 Build 125

**Ch251/Area Scan (51x131x1):** Measurement grid: dx=15mm, dy=15mm

Maximum value of SAR (interpolated) = 0.196 mW/g

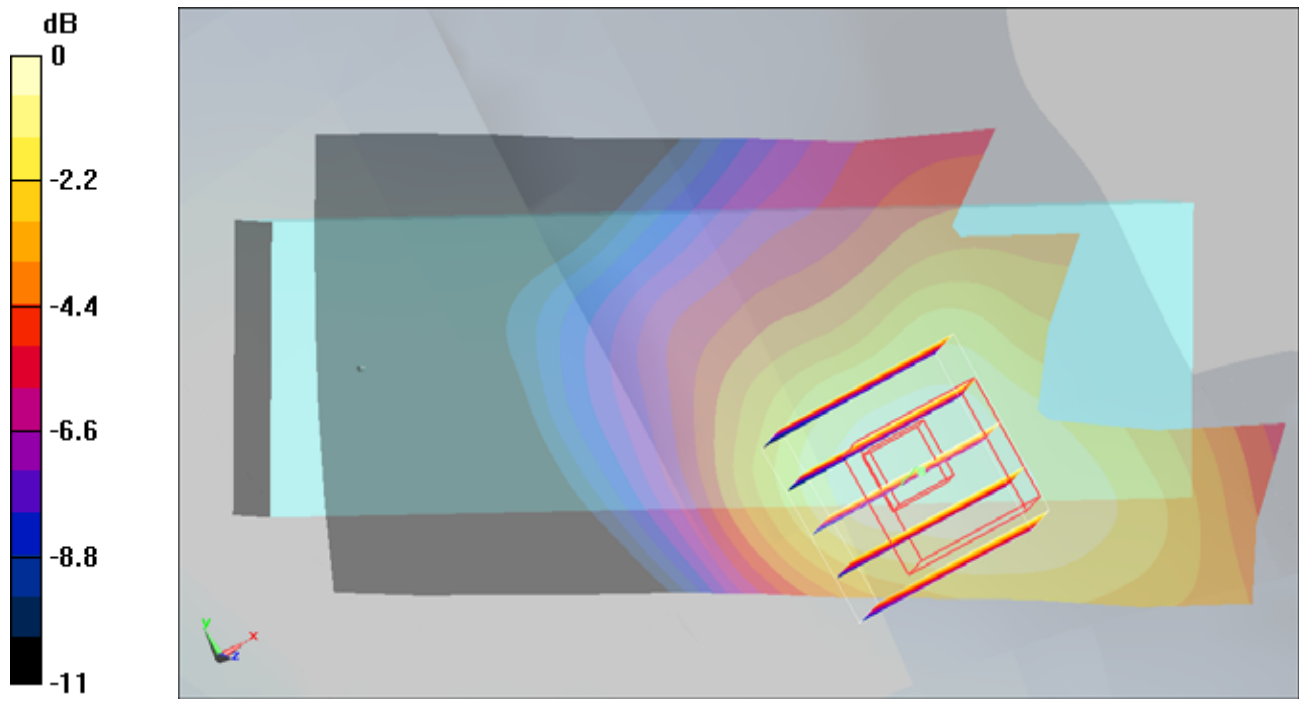
**Ch251/Zoom Scan (5x5x7)/Cube 0:** Measurement grid: dx=8mm, dy=8mm, dz=5mm

Reference Value = 4.09 V/m; Power Drift = -0.041 dB

Peak SAR (extrapolated) = 0.266 W/kg

**SAR(1 g) = 0.186 mW/g; SAR(10 g) = 0.133 mW/g**

Maximum value of SAR (measured) = 0.197 mW/g



0 dB = 0.197mW/g

**#05 GSM850\_Left Cheek\_Ch128**

**DUT: 001805**

Communication System: GSM850; Frequency: 824.2 MHz; Duty Cycle: 1:8.3

Medium: HSL\_850\_100726 Medium parameters used :  $f = 824.2$  MHz;  $\sigma = 0.885$  mho/m;  $\epsilon_r = 41.2$ ;  $\rho = 1000$

kg/m<sup>3</sup>

Ambient Temperature : 22.5 ; Liquid Temperature : 21.5

DASY5 Configuration:

- Probe: ET3DV6 - SN1788; ConvF(6.3, 6.3, 6.3); Calibrated: 2009/9/23
- Sensor-Surface: 4mm (Mechanical Surface Detection)
- Electronics: DAE4 Sn778; Calibrated: 2009/9/18
- Phantom: SAM - Front; Type: SAM; Serial: TP-1446
- Measurement SW: DASY5, V5.0 Build 125; SEMCAD X Version 13.4 Build 125

**Ch128/Area Scan (51x131x1):** Measurement grid: dx=15mm, dy=15mm

Maximum value of SAR = 1.27 mW/g

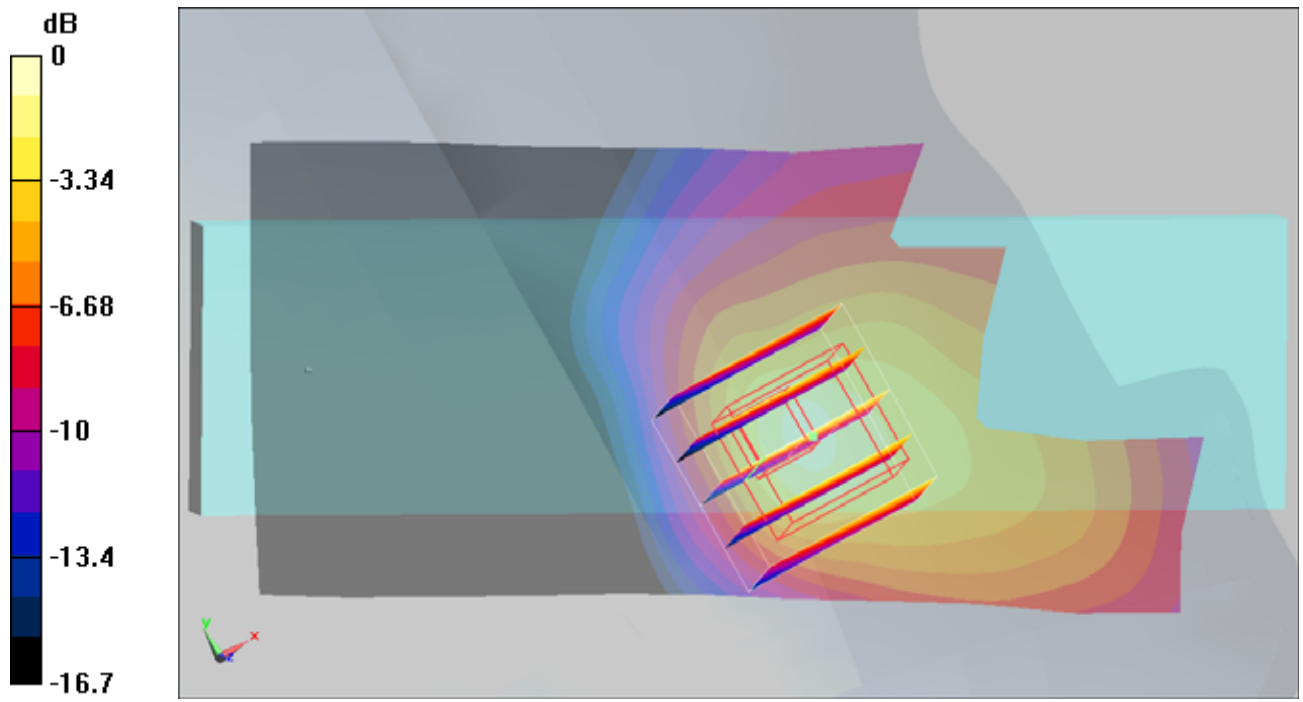
**Ch128/Zoom Scan (5x5x7)/Cube 0:** Measurement grid: dx=8mm, dy=8mm, dz=5mm

Reference Value = 3.29 V/m; Power Drift = 0.154 dB

Peak SAR (extrapolated) = 5.02 W/kg

**SAR(1 g) = 1.4 mW/g; SAR(10 g) = 0.664 mW/g**

Maximum value of SAR (measured) = 1.44 mW/g



0 dB = 1.44mW/g

**#05 GSM850\_Left Cheek\_Ch128\_2D**

**DUT: 001805**

Communication System: GSM850; Frequency: 824.2 MHz; Duty Cycle: 1:8.3

Medium: HSL\_850\_100726 Medium parameters used :  $f = 824.2$  MHz;  $\sigma = 0.885$  mho/m;  $\epsilon_r = 41.2$ ;  $\rho = 1000$  kg/m<sup>3</sup>

Ambient Temperature : 22.5 ; Liquid Temperature : 21.5

DASY5 Configuration:

- Probe: ET3DV6 - SN1788; ConvF(6.3, 6.3, 6.3); Calibrated: 2009/9/23
- Sensor-Surface: 4mm (Mechanical Surface Detection)
- Electronics: DAE4 Sn778; Calibrated: 2009/9/18
- Phantom: SAM - Front; Type: SAM; Serial: TP-1446
- Measurement SW: DASY5, V5.0 Build 125; SEMCAD X Version 13.4 Build 125

**Ch128/Area Scan (51x131x1):** Measurement grid: dx=15mm, dy=15mm

Maximum value of SAR (interpolated) = 1.27 mW/g

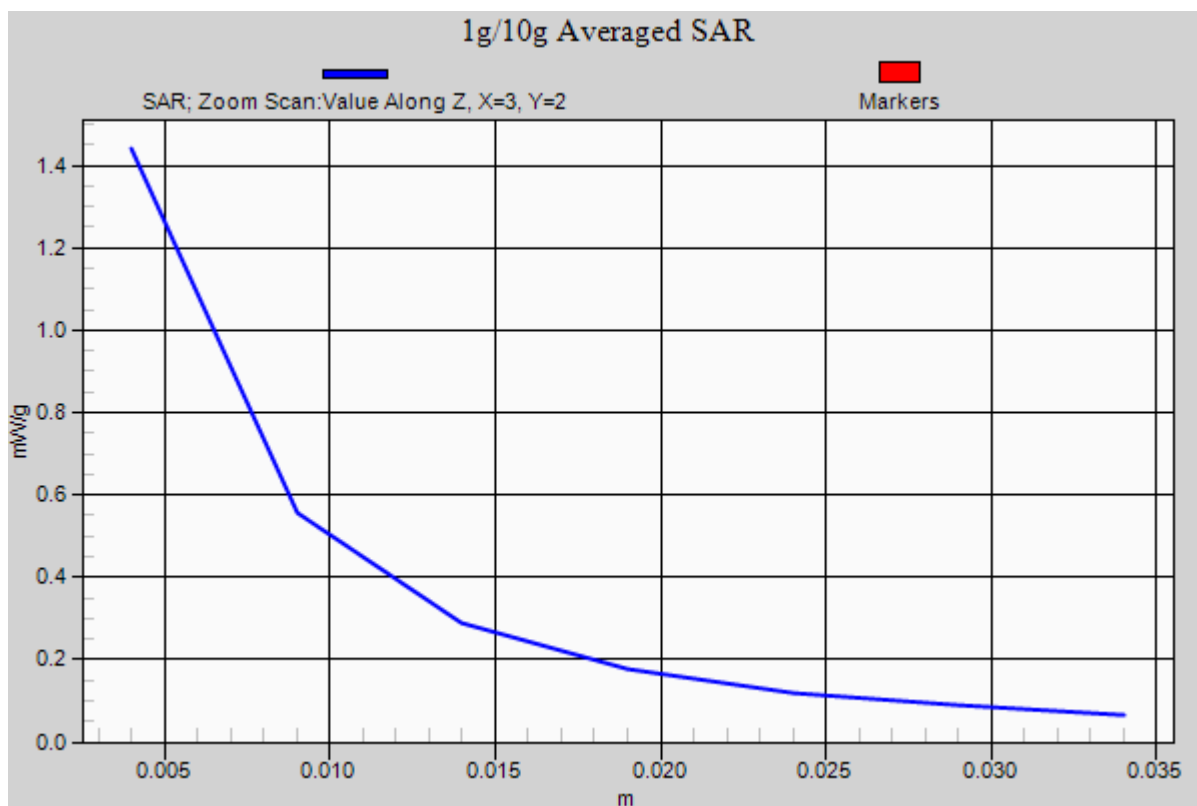
**Ch128/Zoom Scan (5x5x7)/Cube 0:** Measurement grid: dx=8mm, dy=8mm, dz=5mm

Reference Value = 3.29 V/m; Power Drift = 0.154 dB

Peak SAR (extrapolated) = 5.02 W/kg

**SAR(1 g) = 1.4 mW/g; SAR(10 g) = 0.664 mW/g**

Maximum value of SAR (measured) = 1.44 mW/g



**#06 GSM850\_Left Cheek\_Ch189**

**DUT: 001805**

Communication System: GSM850; Frequency: 836.4 MHz; Duty Cycle: 1:8.3

Medium: HSL\_850\_100726 Medium parameters used :  $f = 836.4$  MHz;  $\sigma = 0.897$  mho/m;  $\epsilon_r = 41$ ;  $\rho = 1000$

kg/m<sup>3</sup>

Ambient Temperature : 22.5 ; Liquid Temperature : 21.5

DASY5 Configuration:

- Probe: ET3DV6 - SN1788; ConvF(6.3, 6.3, 6.3); Calibrated: 2009/9/23
- Sensor-Surface: 4mm (Mechanical Surface Detection)
- Electronics: DAE4 Sn778; Calibrated: 2009/9/18
- Phantom: SAM - Front; Type: SAM; Serial: TP-1446
- Measurement SW: DASY5, V5.0 Build 125; SEMCAD X Version 13.4 Build 125

**Ch189/Area Scan (51x131x1):** Measurement grid: dx=15mm, dy=15mm

Maximum value of SAR (interpolated) = 1.3 mW/g

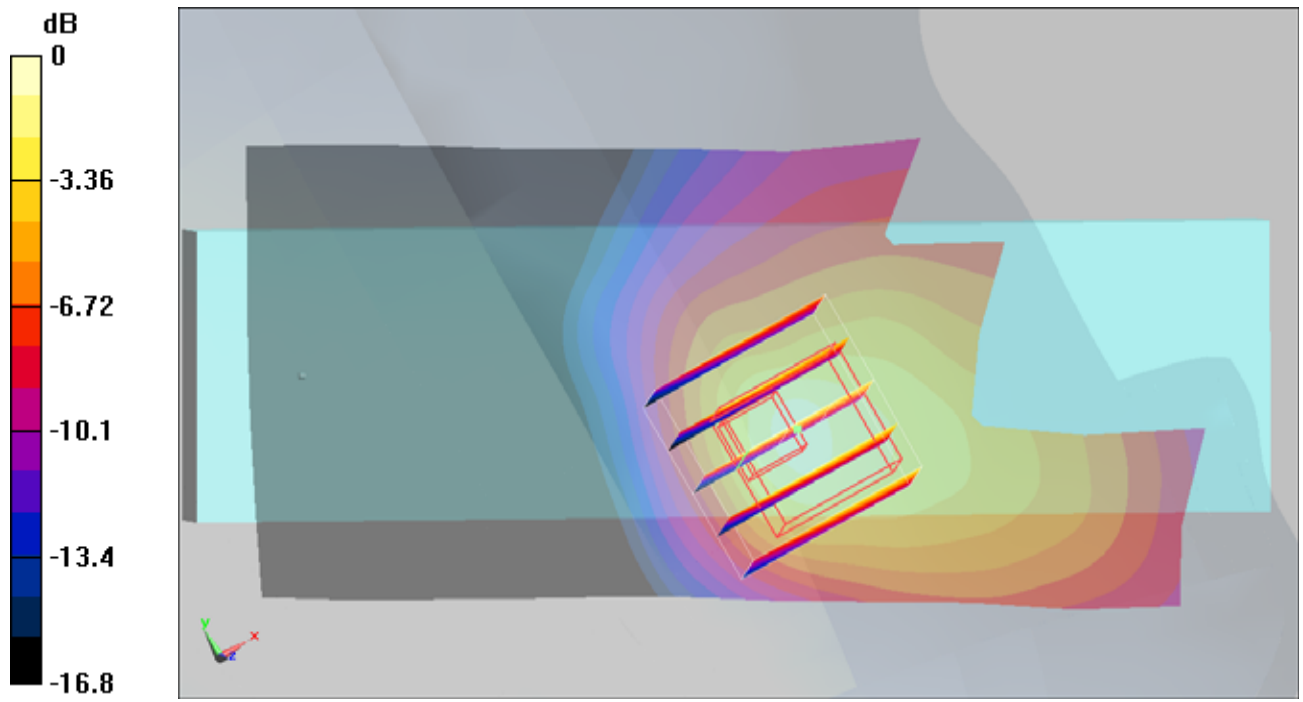
**Ch189/Zoom Scan (5x5x7)/Cube 0:** Measurement grid: dx=8mm, dy=8mm, dz=5mm

Reference Value = 3.69 V/m; Power Drift = 0.037 dB

Peak SAR (extrapolated) = 4.89 W/kg

**SAR(1 g) = 1.39 mW/g; SAR(10 g) = 0.675 mW/g**

Maximum value of SAR (measured) = 1.44 mW/g



0 dB = 1.44mW/g

**#07 GSM1900\_Right Cheek\_Ch512**

**DUT: 001805**

Communication System: PCS; Frequency: 1850.2 MHz; Duty Cycle: 1:8.3

Medium: HSL\_1900\_100727 Medium parameters used:  $f = 1850.2$  MHz;  $\sigma = 1.39$  mho/m;  $\epsilon_r = 38.3$ ;  $\rho = 1000$

kg/m<sup>3</sup>

Ambient Temperature : 22.4 ; Liquid Temperature : 21.4

DASY5 Configuration:

- Probe: ET3DV6 - SN1788; ConvF(5.11, 5.11, 5.11); Calibrated: 2009/9/23
- Sensor-Surface: 4mm (Mechanical Surface Detection)
- Electronics: DAE4 Sn778; Calibrated: 2009/9/18
- Phantom: SAM-Back; Type: QD 000 P40 C; Serial: TP-1383
- Measurement SW: DASY5, V5.0 Build 125; SEMCAD X Version 13.4 Build 125

**Ch512/Area Scan (51x131x1):** Measurement grid: dx=15mm, dy=15mm

Maximum value of SAR (interpolated) = 0.369 mW/g

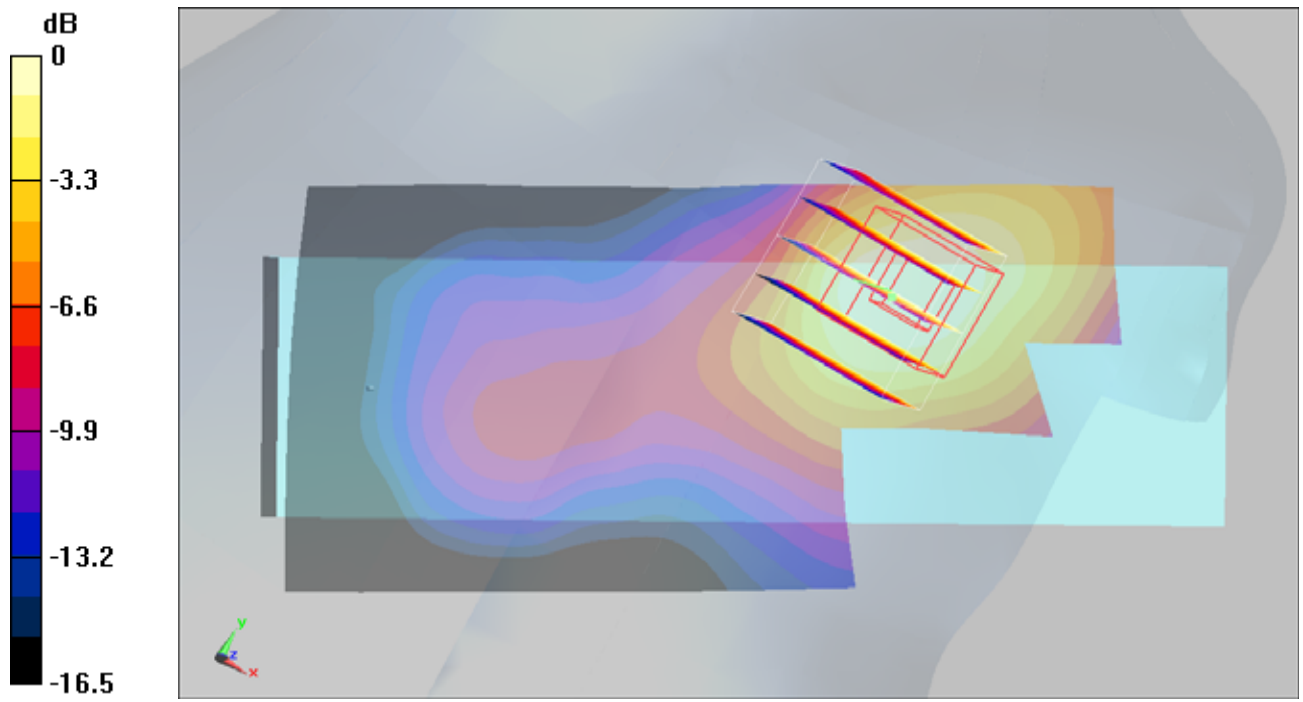
**Ch512/Zoom Scan (5x5x7)/Cube 0:** Measurement grid: dx=8mm, dy=8mm, dz=5mm

Reference Value = 4.04 V/m; Power Drift = -0.146 dB

Peak SAR (extrapolated) = 0.473 W/kg

**SAR(1 g) = 0.331 mW/g; SAR(10 g) = 0.206 mW/g**

Maximum value of SAR (measured) = 0.356 mW/g



0 dB = 0.356mW/g

**#07 GSM1900\_Right Cheek\_Ch512\_2D**

**DUT: 001805**

Communication System: PCS; Frequency: 1850.2 MHz; Duty Cycle: 1:8.3

Medium: HSL\_1900\_100727 Medium parameters used:  $f = 1850.2$  MHz;  $\sigma = 1.39$  mho/m;  $\epsilon_r = 38.3$ ;  $\rho = 1000$  kg/m<sup>3</sup>

Ambient Temperature : 22.4 ; Liquid Temperature : 21.4

DASY5 Configuration:

- Probe: ET3DV6 - SN1788; ConvF(5.11, 5.11, 5.11); Calibrated: 2009/9/23
- Sensor-Surface: 4mm (Mechanical Surface Detection)
- Electronics: DAE4 Sn778; Calibrated: 2009/9/18
- Phantom: SAM-Back; Type: QD 000 P40 C; Serial: TP-1383
- Measurement SW: DASY5, V5.0 Build 125; SEMCAD X Version 13.4 Build 125

**Ch512/Area Scan (51x131x1):** Measurement grid: dx=15mm, dy=15mm

Maximum value of SAR (interpolated) = 0.369 mW/g

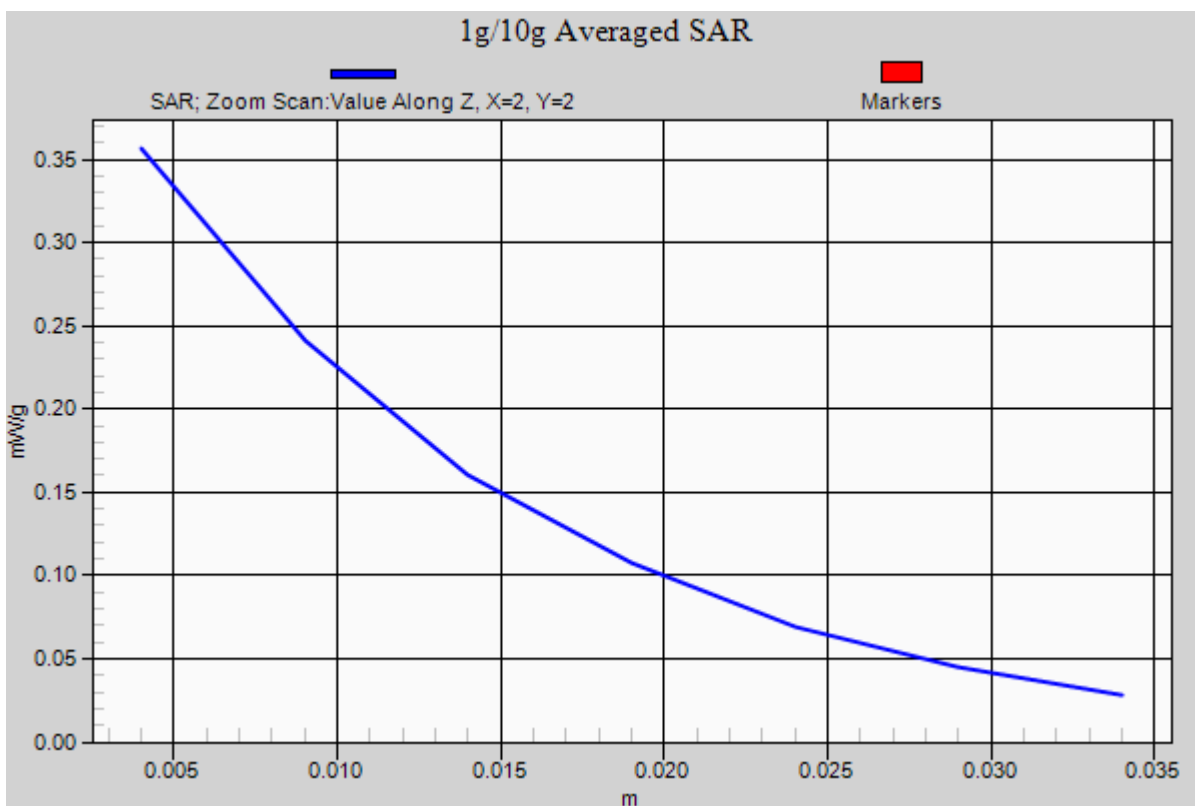
**Ch512/Zoom Scan (5x5x7)/Cube 0:** Measurement grid: dx=8mm, dy=8mm, dz=5mm

Reference Value = 4.04 V/m; Power Drift = -0.146 dB

Peak SAR (extrapolated) = 0.473 W/kg

**SAR(1 g) = 0.331 mW/g; SAR(10 g) = 0.206 mW/g**

Maximum value of SAR (measured) = 0.356 mW/g



## #08 GSM1900\_Right Tilted\_Ch512

**DUT: 001805**

Communication System: PCS; Frequency: 1850.2 MHz; Duty Cycle: 1:8.3

Medium: HSL\_1900\_100727 Medium parameters used:  $f = 1850.2$  MHz;  $\sigma = 1.39$  mho/m;  $\epsilon_r = 38.3$ ;  $\rho = 1000$  kg/m<sup>3</sup>

Ambient Temperature : 22.5 ; Liquid Temperature : 21.4

DASY5 Configuration:

- Probe: ET3DV6 - SN1788; ConvF(5.11, 5.11, 5.11); Calibrated: 2009/9/23
- Sensor-Surface: 4mm (Mechanical Surface Detection)
- Electronics: DAE4 Sn778; Calibrated: 2009/9/18
- Phantom: SAM-Back; Type: QD 000 P40 C; Serial: TP-1383
- Measurement SW: DASY5, V5.0 Build 125; SEMCAD X Version 13.4 Build 125

**Ch512/Area Scan (51x131x1):** Measurement grid: dx=15mm, dy=15mm

Maximum value of SAR (interpolated) = 0.060 mW/g

**Ch512/Zoom Scan (5x5x7)/Cube 0:** Measurement grid: dx=8mm, dy=8mm, dz=5mm

Reference Value = 4.65 V/m; Power Drift = -0.124 dB

Peak SAR (extrapolated) = 0.076 W/kg

**SAR(1 g) = 0.053 mW/g; SAR(10 g) = 0.034 mW/g**

Maximum value of SAR (measured) = 0.057 mW/g

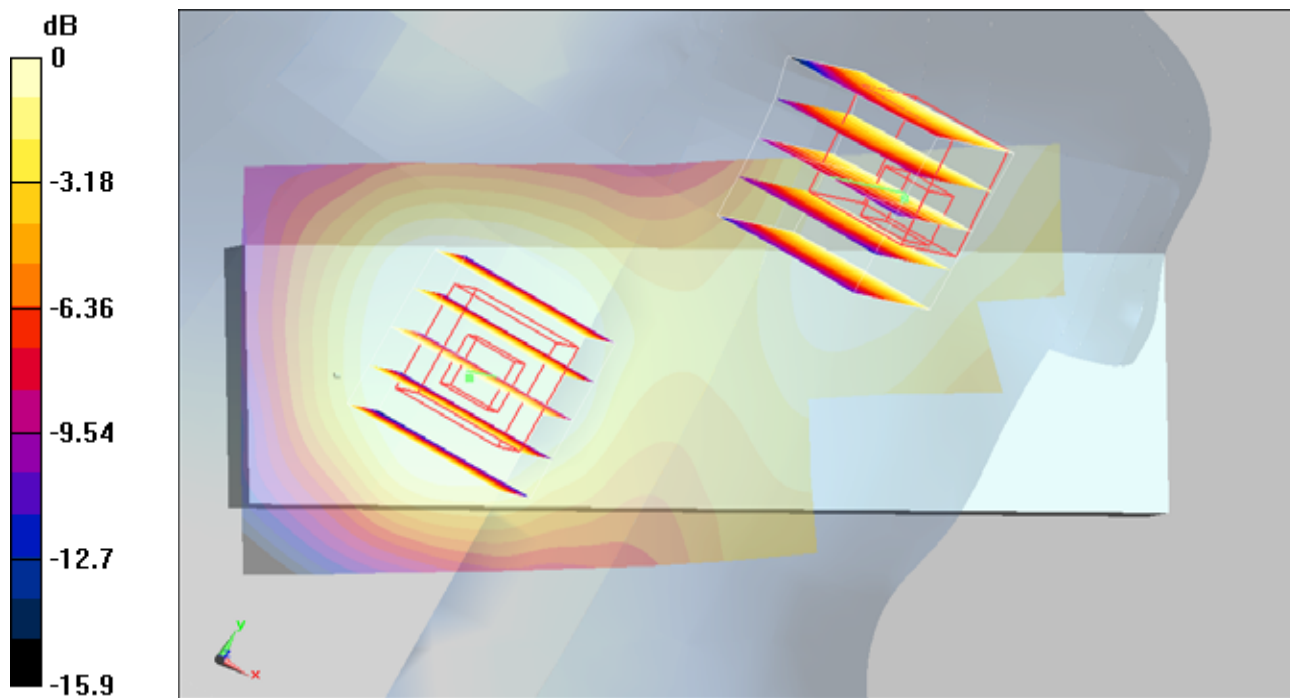
**Ch512/Zoom Scan (5x5x7)/Cube 1:** Measurement grid: dx=8mm, dy=8mm, dz=5mm

Reference Value = 4.65 V/m; Power Drift = -0.124 dB

Peak SAR (extrapolated) = 0.050 W/kg

**SAR(1 g) = 0.036 mW/g; SAR(10 g) = 0.025 mW/g**

Maximum value of SAR (measured) = 0.038 mW/g



0 dB = 0.038mW/g

**#09 GSM1900\_Left Cheek\_Ch512**

**DUT: 001805**

Communication System: PCS; Frequency: 1850.2 MHz; Duty Cycle: 1:8.3

Medium: HSL\_1900\_100727 Medium parameters used:  $f = 1850.2$  MHz;  $\sigma = 1.39$  mho/m;  $\epsilon_r = 38.3$ ;  $\rho = 1000$  kg/m<sup>3</sup>

Ambient Temperature : 22.3 ; Liquid Temperature : 21.4

DASY5 Configuration:

- Probe: ET3DV6 - SN1788; ConvF(5.11, 5.11, 5.11); Calibrated: 2009/9/23
- Sensor-Surface: 4mm (Mechanical Surface Detection)
- Electronics: DAE4 Sn778; Calibrated: 2009/9/18
- Phantom: SAM-Back; Type: QD 000 P40 C; Serial: TP-1383
- Measurement SW: DASY5, V5.0 Build 125; SEMCAD X Version 13.4 Build 125

**Ch512/Area Scan (51x131x1):** Measurement grid: dx=15mm, dy=15mm

Maximum value of SAR (interpolated) = 0.207 mW/g

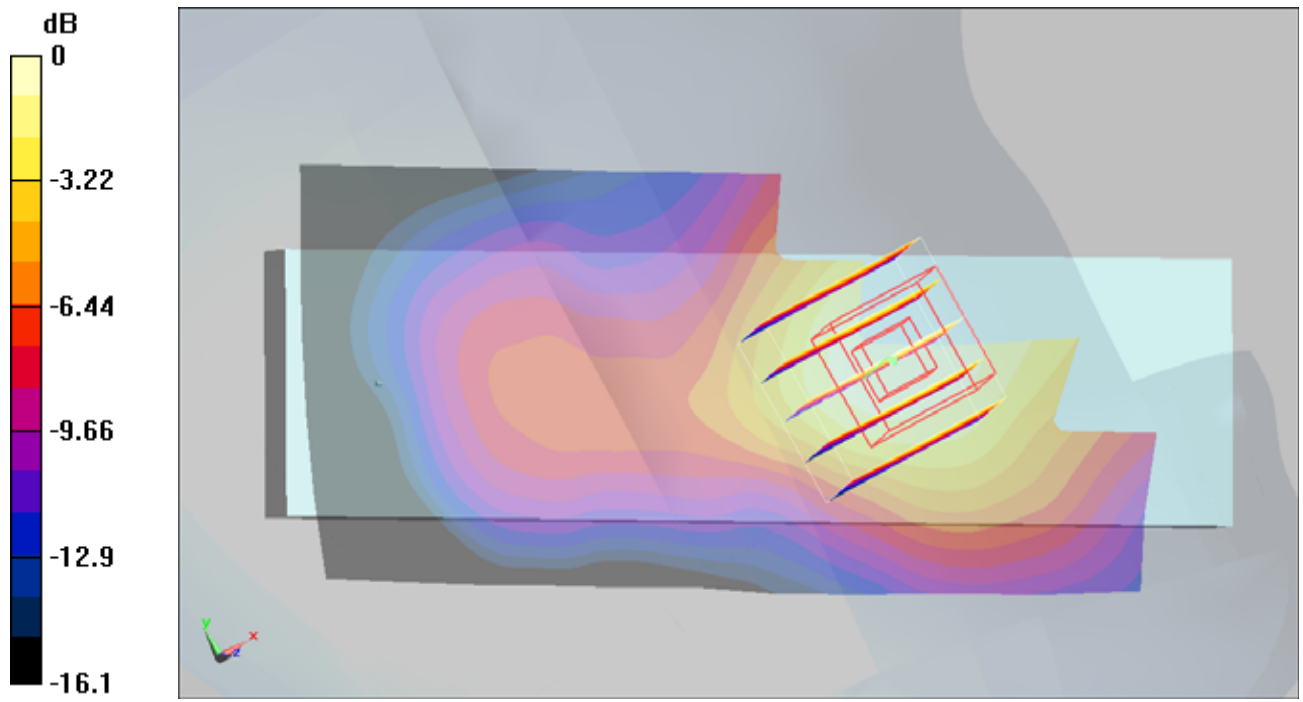
**Ch512/Zoom Scan (5x5x7)/Cube 0:** Measurement grid: dx=8mm, dy=8mm, dz=5mm

Reference Value = 3.53 V/m; Power Drift = -0.130 dB

Peak SAR (extrapolated) = 0.267 W/kg

**SAR(1 g) = 0.190 mW/g; SAR(10 g) = 0.124 mW/g**

Maximum value of SAR (measured) = 0.203 mW/g



0 dB = 0.203mW/g

## #10 GSM1900\_Left Tilted\_Ch512

**DUT: 001805**

Communication System: PCS; Frequency: 1850.2 MHz; Duty Cycle: 1:8.3

Medium: HSL\_1900\_100727 Medium parameters used:  $f = 1850.2$  MHz;  $\sigma = 1.39$  mho/m;  $\epsilon_r = 38.3$ ;  $\rho = 1000$  kg/m<sup>3</sup>

Ambient Temperature : 22.6 ; Liquid Temperature : 21.4

DASY5 Configuration:

- Probe: ET3DV6 - SN1788; ConvF(5.11, 5.11, 5.11); Calibrated: 2009/9/23
- Sensor-Surface: 4mm (Mechanical Surface Detection)
- Electronics: DAE4 Sn778; Calibrated: 2009/9/18
- Phantom: SAM-Back; Type: QD 000 P40 C; Serial: TP-1383
- Measurement SW: DASY5, V5.0 Build 125; SEMCAD X Version 13.4 Build 125

**Ch512/Area Scan (51x131x1):** Measurement grid: dx=15mm, dy=15mm

Maximum value of SAR (interpolated) = 0.054 mW/g

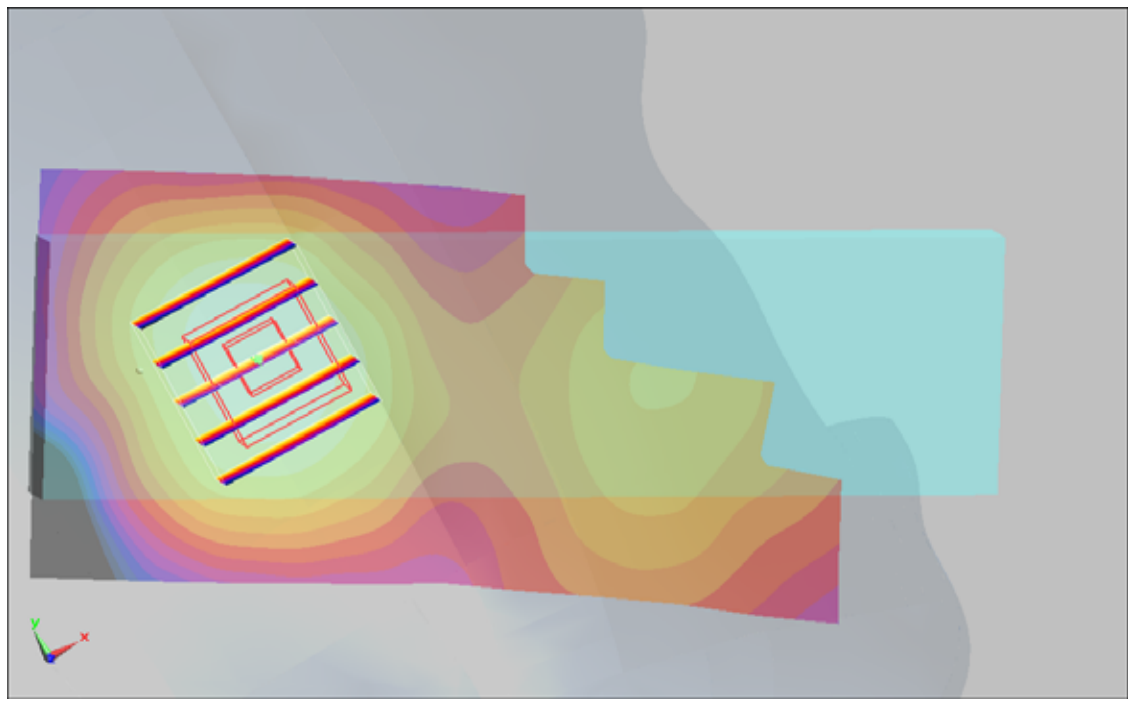
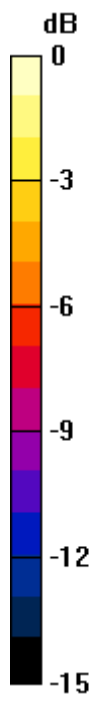
**Ch512/Zoom Scan (5x5x7)/Cube 0:** Measurement grid: dx=8mm, dy=8mm, dz=5mm

Reference Value = 4.78 V/m; Power Drift = -0.122 dB

Peak SAR (extrapolated) = 0.070 W/kg

**SAR(1 g) = 0.048 mW/g; SAR(10 g) = 0.031 mW/g**

Maximum value of SAR (measured) = 0.052 mW/g



0 dB = 0.052mW/g

## #11 GSM1900\_Right Cheek\_Ch661

**DUT: 001805**

Communication System: PCS; Frequency: 1880 MHz; Duty Cycle: 1:8.3

Medium: HSL\_1900\_100727 Medium parameters used:  $f = 1880$  MHz;  $\sigma = 1.43$  mho/m;  $\epsilon_r = 38.2$ ;  $\rho = 1000$

kg/m<sup>3</sup>

Ambient Temperature : 22.5 ; Liquid Temperature : 21.4

DASY5 Configuration:

- Probe: ET3DV6 - SN1788; ConvF(5.11, 5.11, 5.11); Calibrated: 2009/9/23
- Sensor-Surface: 4mm (Mechanical Surface Detection)
- Electronics: DAE4 Sn778; Calibrated: 2009/9/18
- Phantom: SAM-Back; Type: QD 000 P40 C; Serial: TP-1383
- Measurement SW: DASY5, V5.0 Build 125; SEMCAD X Version 13.4 Build 125

**Ch661/Area Scan (51x131x1):** Measurement grid: dx=15mm, dy=15mm

Maximum value of SAR (interpolated) = 0.315 mW/g

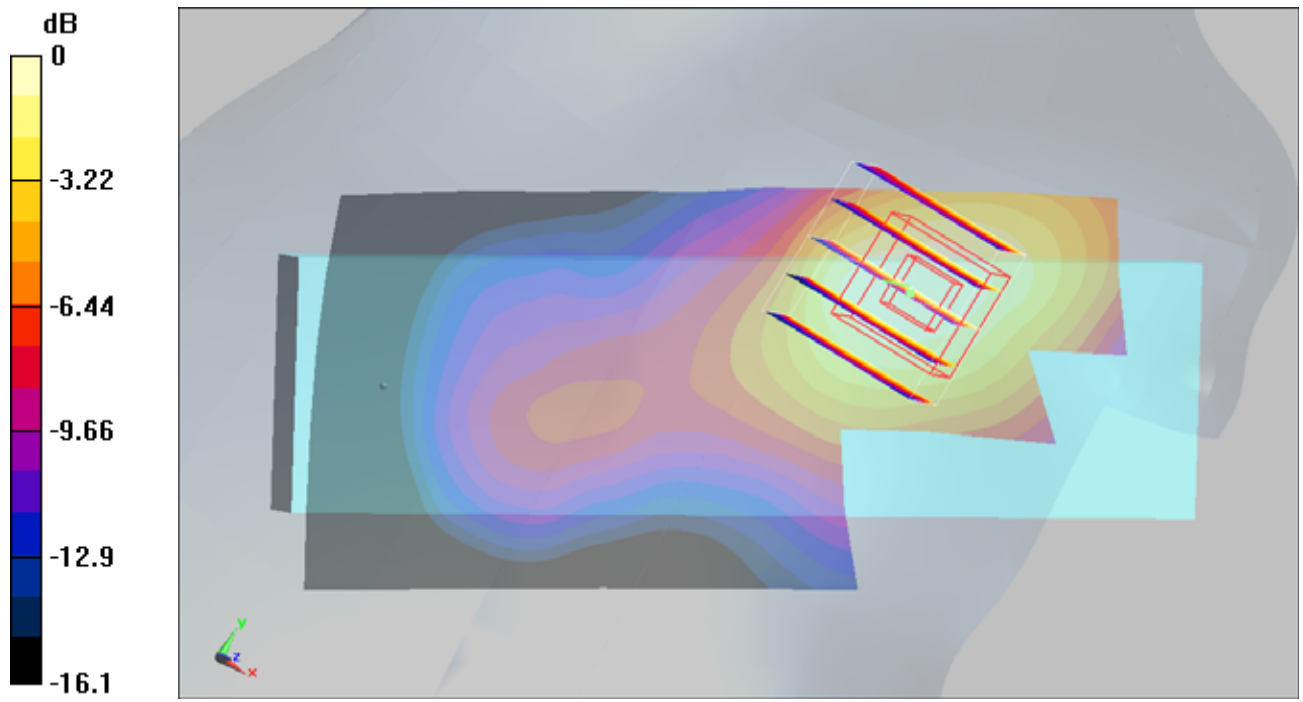
**Ch661/Zoom Scan (5x5x7)/Cube 0:** Measurement grid: dx=8mm, dy=8mm, dz=5mm

Reference Value = 3.29 V/m; Power Drift = -0.064 dB

Peak SAR (extrapolated) = 0.422 W/kg

**SAR(1 g) = 0.288 mW/g; SAR(10 g) = 0.177 mW/g**

Maximum value of SAR (measured) = 0.311 mW/g



0 dB = 0.311mW/g

## #12 GSM1900\_Right Cheek\_Ch810

**DUT: 001805**

Communication System: PCS; Frequency: 1909.8 MHz; Duty Cycle: 1:8.3

Medium: HSL\_1900\_100727 Medium parameters used:  $f = 1910$  MHz;  $\sigma = 1.46$  mho/m;  $\epsilon_r = 38.2$ ;  $\rho = 1000$

kg/m<sup>3</sup>

Ambient Temperature : 22.5 ; Liquid Temperature : 21.4

DASY5 Configuration:

- Probe: ET3DV6 - SN1788; ConvF(5.11, 5.11, 5.11); Calibrated: 2009/9/23
- Sensor-Surface: 4mm (Mechanical Surface Detection)
- Electronics: DAE4 Sn778; Calibrated: 2009/9/18
- Phantom: SAM-Back; Type: QD 000 P40 C; Serial: TP-1383
- Measurement SW: DASY5, V5.0 Build 125; SEMCAD X Version 13.4 Build 125

**Ch810/Area Scan (51x131x1):** Measurement grid: dx=15mm, dy=15mm

Maximum value of SAR (interpolated) = 0.352 mW/g

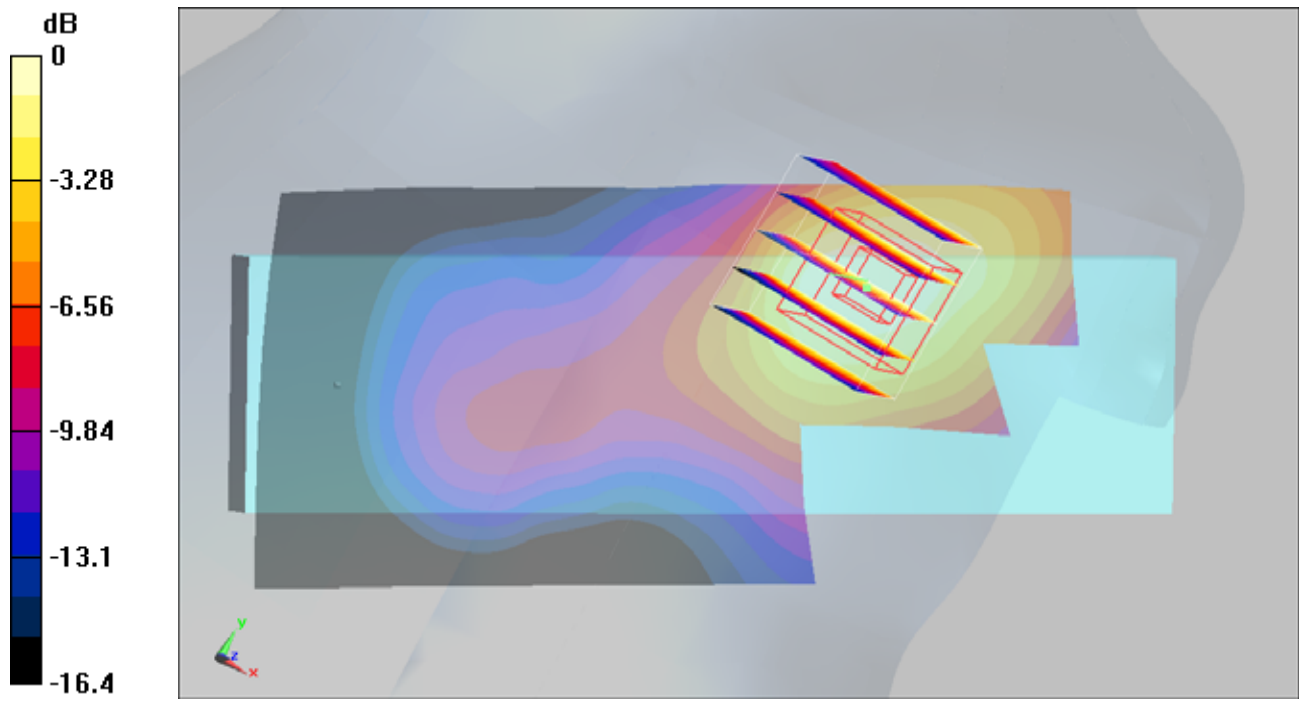
**Ch810/Zoom Scan (5x5x7)/Cube 0:** Measurement grid: dx=8mm, dy=8mm, dz=5mm

Reference Value = 3.11 V/m; Power Drift = 0.011 dB

Peak SAR (extrapolated) = 0.477 W/kg

**SAR(1 g) = 0.319 mW/g; SAR(10 g) = 0.194 mW/g**

Maximum value of SAR (measured) = 0.348 mW/g



0 dB = 0.348mW/g

**#13 GSM850\_GPRS10\_Face\_1.5cm\_Ch251**

**DUT: 001805**

Communication System: GSM850; Frequency: 848.8 MHz; Duty Cycle: 1:4

Medium: MSL\_850\_100727 Medium parameters used:  $f = 849$  MHz;  $\sigma = 0.976$  mho/m;  $\epsilon_r = 54.4$ ;  $\rho = 1000$

kg/m<sup>3</sup>

Ambient Temperature : 22.4 ; Liquid Temperature : 21.3

DASY5 Configuration:

- Probe: ET3DV6 - SN1788; ConvF(6.08, 6.08, 6.08); Calibrated: 2009/9/23
- Sensor-Surface: 4mm (Mechanical Surface Detection)
- Electronics: DAE4 Sn778; Calibrated: 2009/9/18
- Phantom: SAM - Front; Type: SAM; Serial: TP-1446
- Measurement SW: DASY5, V5.0 Build 125; SEMCAD X Version 13.4 Build 125

**Ch251/Area Scan (41x81x1):** Measurement grid: dx=15mm, dy=15mm

Maximum value of SAR (interpolated) = 0.490 mW/g

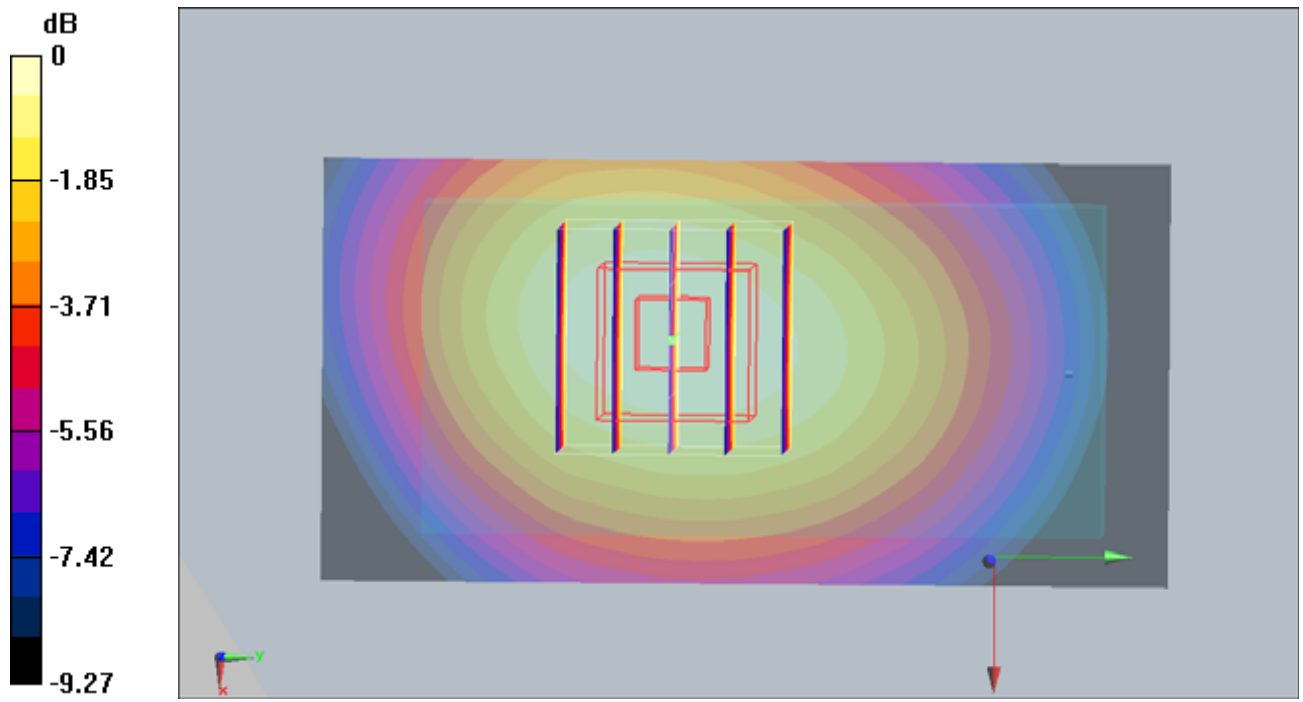
**Ch251/Zoom Scan (5x5x7)/Cube 0:** Measurement grid: dx=8mm, dy=8mm, dz=5mm

Reference Value = 10.6 V/m; Power Drift = -0.055 dB

Peak SAR (extrapolated) = 0.591 W/kg

**SAR(1 g) = 0.455 mW/g; SAR(10 g) = 0.327 mW/g**

Maximum value of SAR (measured) = 0.484 mW/g



**#14 GSM850\_GPRS10\_Bottom\_1.5cm\_Ch251**

**DUT: 001805**

Communication System: GSM850; Frequency: 848.8 MHz; Duty Cycle: 1:4

Medium: MSL\_850\_100727 Medium parameters used:  $f = 849$  MHz;  $\sigma = 0.976$  mho/m;  $\epsilon_r = 54.4$ ;  $\rho = 1000$

kg/m<sup>3</sup>

Ambient Temperature : 22.5 ; Liquid Temperature : 21.3

DASY5 Configuration:

- Probe: ET3DV6 - SN1788; ConvF(6.08, 6.08, 6.08); Calibrated: 2009/9/23
- Sensor-Surface: 4mm (Mechanical Surface Detection)
- Electronics: DAE4 Sn778; Calibrated: 2009/9/18
- Phantom: SAM - Front; Type: SAM; Serial: TP-1446
- Measurement SW: DASY5, V5.0 Build 125; SEMCAD X Version 13.4 Build 125

**Ch251/Area Scan (41x81x1):** Measurement grid: dx=15mm, dy=15mm

Maximum value of SAR (interpolated) = 0.893 mW/g

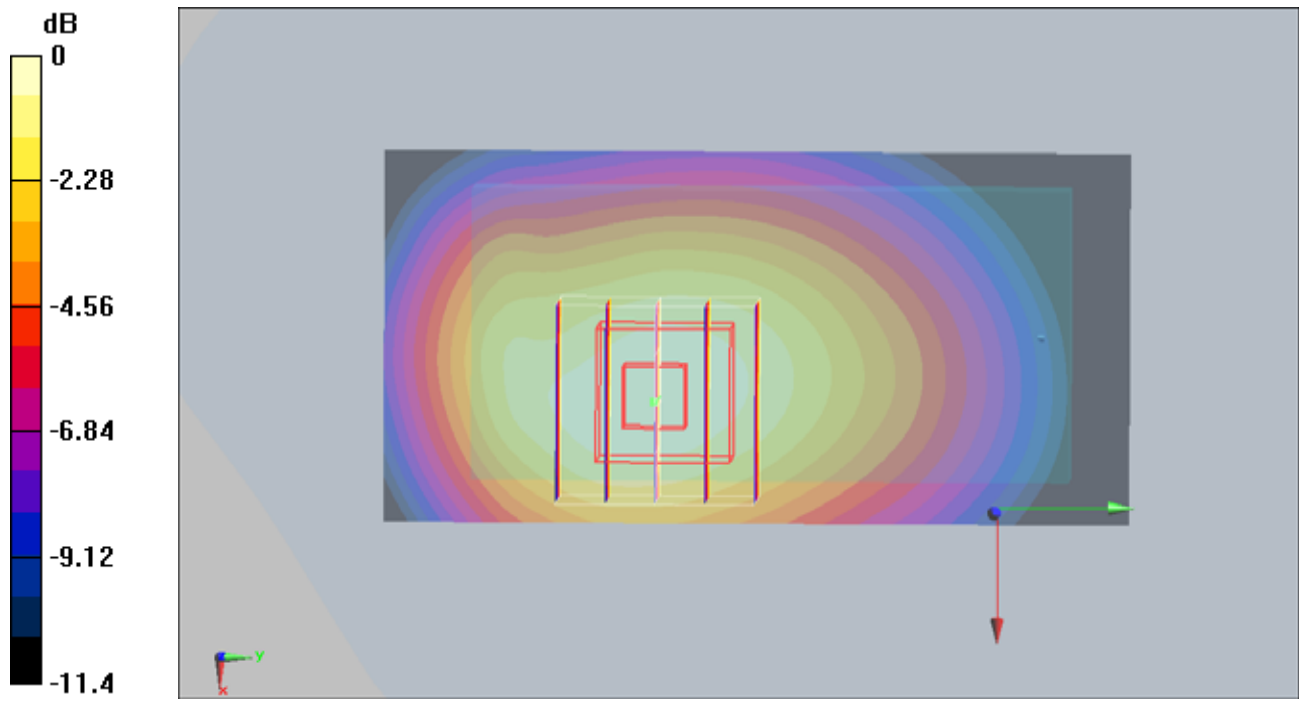
**Ch251/Zoom Scan (5x5x7)/Cube 0:** Measurement grid: dx=8mm, dy=8mm, dz=5mm

Reference Value = 10.8 V/m; Power Drift = -0.080 dB

Peak SAR (extrapolated) = 1.14 W/kg

**SAR(1 g) = 0.824 mW/g; SAR(10 g) = 0.563 mW/g**

Maximum value of SAR (measured) = 0.886 mW/g



0 dB = 0.886mW/g

**#15 GSM850\_GPRS10\_Bottom\_1.5cm\_Ch128**

**DUT: 001805**

Communication System: GSM850; Frequency: 824.2 MHz; Duty Cycle: 1:4

Medium: MSL\_850\_100727 Medium parameters used:  $f = 824.2$  MHz;  $\sigma = 0.953$  mho/m;  $\epsilon_r = 54.7$ ;  $\rho = 1000$

kg/m<sup>3</sup>

Ambient Temperature : 22.4 ; Liquid Temperature : 21.3

DASY5 Configuration:

- Probe: ET3DV6 - SN1788; ConvF(6.08, 6.08, 6.08); Calibrated: 2009/9/23
- Sensor-Surface: 4mm (Mechanical Surface Detection)
- Electronics: DAE4 Sn778; Calibrated: 2009/9/18
- Phantom: SAM - Front; Type: SAM; Serial: TP-1446
- Measurement SW: DASY5, V5.0 Build 125; SEMCAD X Version 13.4 Build 125

**Ch128/Area Scan (41x81x1):** Measurement grid: dx=15mm, dy=15mm

Maximum value of SAR (interpolated) = 1.58 mW/g

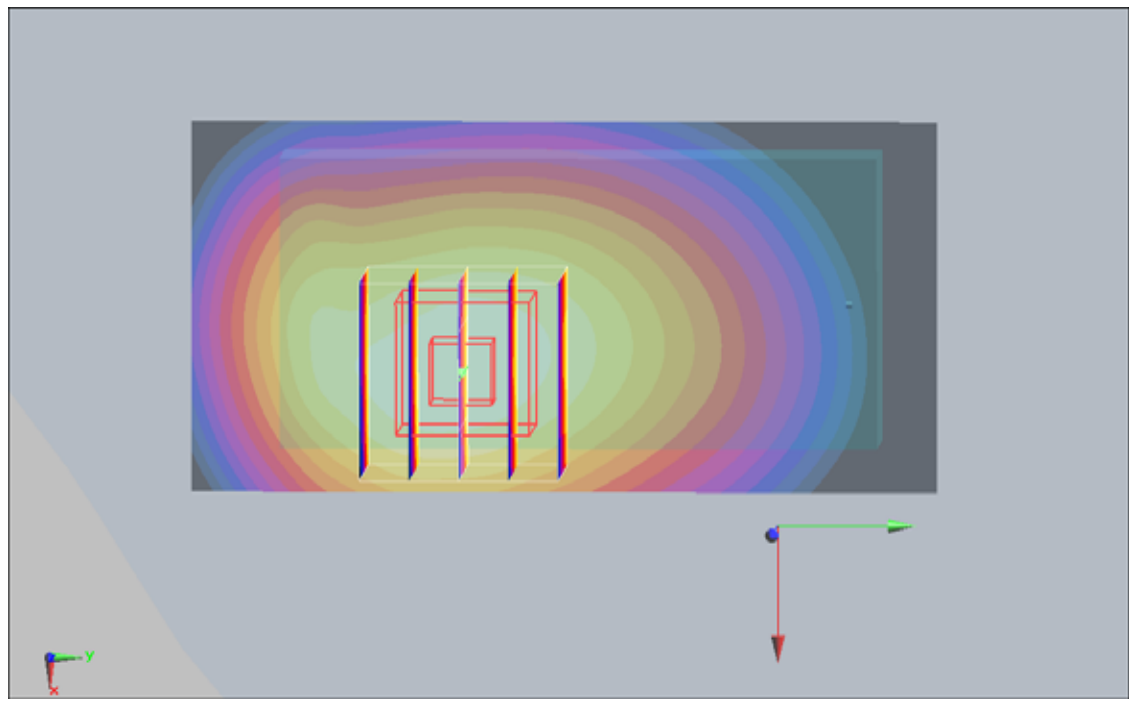
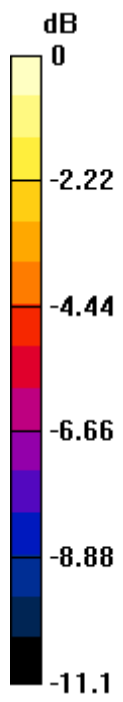
**Ch128/Zoom Scan (5x5x7)/Cube 0:** Measurement grid: dx=8mm, dy=8mm, dz=5mm

Reference Value = 14.4 V/m; Power Drift = -0.144 dB

Peak SAR (extrapolated) = 2.01 W/kg

**SAR(1 g) = 1.46 mW/g; SAR(10 g) = 0.999 mW/g**

Maximum value of SAR (measured) = 1.57 mW/g



0 dB = 1.57mW/g

#15 GSM850\_GPRS10\_Bottom\_1.5cm\_Ch128\_2D

DUT: 001805

Communication System: GSM850; Frequency: 824.2 MHz; Duty Cycle: 1:4

Medium: MSL\_850\_100727 Medium parameters used:  $f = 824.2$  MHz;  $\sigma = 0.953$  mho/m;  $\epsilon_r = 54.7$ ;  $\rho = 1000$  kg/m<sup>3</sup>

Ambient Temperature : 22.4 ; Liquid Temperature : 21.3

DASY5 Configuration:

- Probe: ET3DV6 - SN1788; ConvF(6.08, 6.08, 6.08); Calibrated: 2009/9/23
- Sensor-Surface: 4mm (Mechanical Surface Detection)
- Electronics: DAE4 Sn778; Calibrated: 2009/9/18
- Phantom: SAM - Front; Type: SAM; Serial: TP-1446
- Measurement SW: DASY5, V5.0 Build 125; SEMCAD X Version 13.4 Build 125

**Ch128/Area Scan (41x81x1):** Measurement grid: dx=15mm, dy=15mm

Maximum value of SAR (interpolated) = 1.58 mW/g

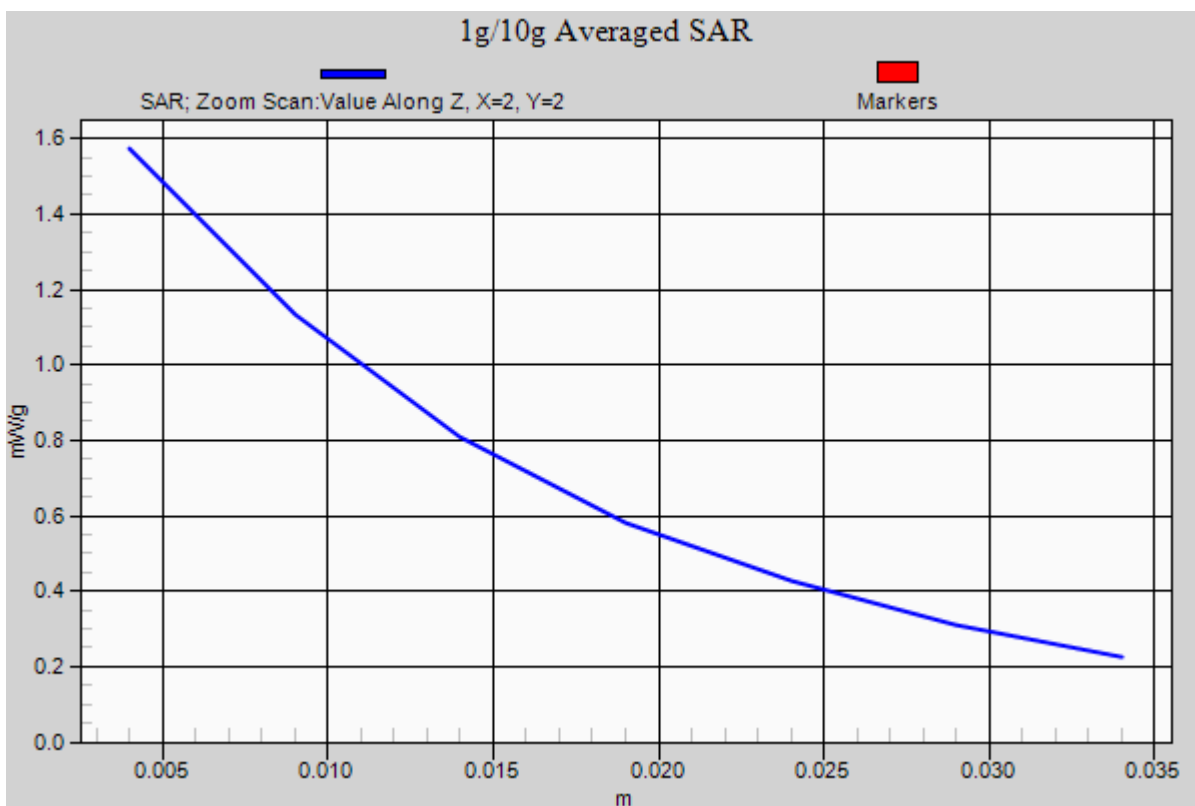
**Ch128/Zoom Scan (5x5x7)/Cube 0:** Measurement grid: dx=8mm, dy=8mm, dz=5mm

Reference Value = 14.4 V/m; Power Drift = -0.144 dB

Peak SAR (extrapolated) = 2.01 W/kg

**SAR(1 g) = 1.46 mW/g; SAR(10 g) = 0.999 mW/g**

Maximum value of SAR (measured) = 1.57 mW/g



**#16 GSM850\_GPRS10\_Bottom\_1.5cm\_Ch189**

**DUT: 001805**

Communication System: GSM850; Frequency: 836.4 MHz; Duty Cycle: 1:4

Medium: MSL\_850\_100727 Medium parameters used:  $f = 836.4$  MHz;  $\sigma = 0.964$  mho/m;  $\epsilon_r = 54.5$ ;  $\rho = 1000$

kg/m<sup>3</sup>

Ambient Temperature : 22.3 ; Liquid Temperature : 21.3

DASY5 Configuration:

- Probe: ET3DV6 - SN1788; ConvF(6.08, 6.08, 6.08); Calibrated: 2009/9/23
- Sensor-Surface: 4mm (Mechanical Surface Detection)
- Electronics: DAE4 Sn778; Calibrated: 2009/9/18
- Phantom: SAM - Front; Type: SAM; Serial: TP-1446
- Measurement SW: DASY5, V5.0 Build 125; SEMCAD X Version 13.4 Build 125

**Ch189/Area Scan (41x81x1):** Measurement grid: dx=15mm, dy=15mm

Maximum value of SAR (interpolated) = 1.24 mW/g

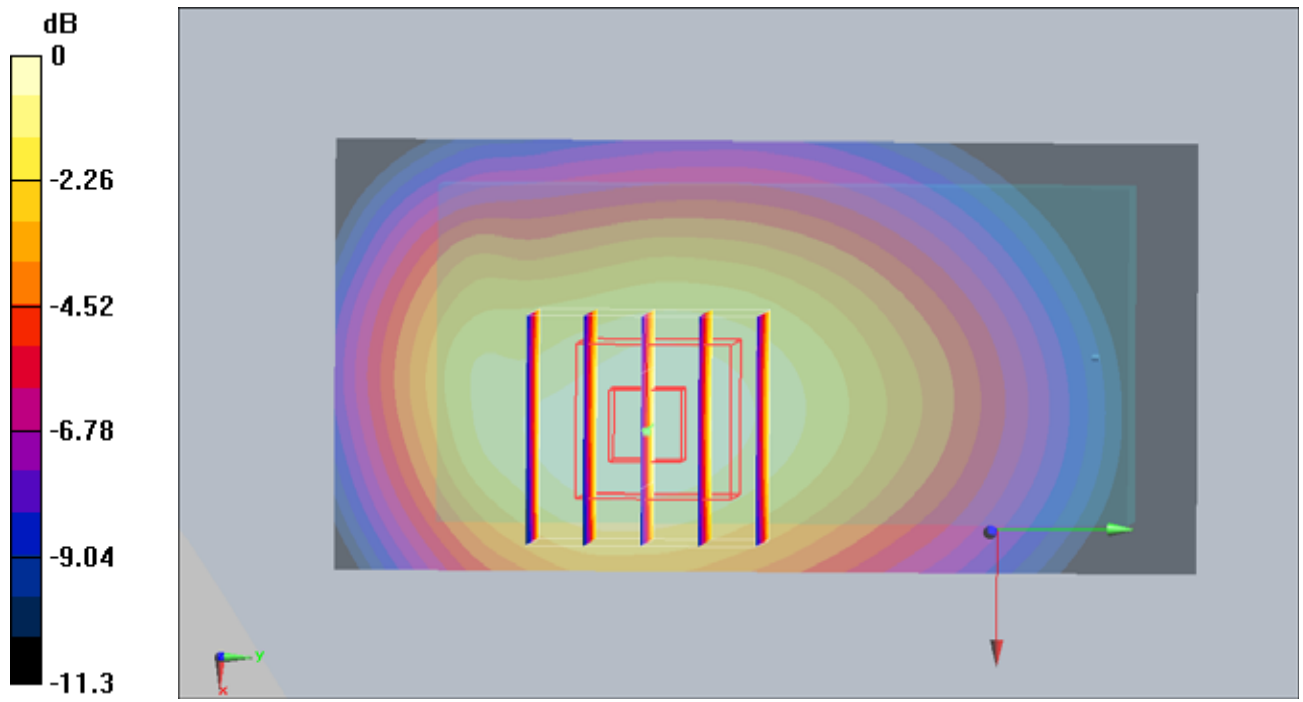
**Ch189/Zoom Scan (5x5x7)/Cube 0:** Measurement grid: dx=8mm, dy=8mm, dz=5mm

Reference Value = 12.8 V/m; Power Drift = -0.123 dB

Peak SAR (extrapolated) = 1.57 W/kg

**SAR(1 g) = 1.15 mW/g; SAR(10 g) = 0.784 mW/g**

Maximum value of SAR (measured) = 1.23 mW/g



0 dB = 1.23mW/g

**#17 GSM1900\_GPRS10\_Face\_1.5cm\_Ch512**

**DUT: 001805**

Communication System: PCS 1900; Frequency: 1850.2 MHz; Duty Cycle: 1:4

Medium: MSL\_1900\_100727 Medium parameters used:  $f = 1850.2$  MHz;  $\sigma = 1.5$  mho/m;  $\epsilon_r = 52.2$ ;  $\rho = 1000$

kg/m<sup>3</sup>

Ambient Temperature : 22.3 ; Liquid Temperature : 21.2

DASY5 Configuration:

- Probe: ET3DV6 - SN1788; ConvF(4.52, 4.52, 4.52); Calibrated: 2009/9/23

- Sensor-Surface: 4mm (Mechanical Surface Detection)

- Electronics: DAE4 Sn778; Calibrated: 2009/9/18

- Phantom: SAM-Back; Type: QD 000 P40 C; Serial: TP-1383

- Measurement SW: DASY5, V5.0 Build 125; SEMCAD X Version 13.4 Build 125

**Ch512/Area Scan (41x81x1):** Measurement grid: dx=15mm, dy=15mm

Maximum value of SAR (interpolated) = 0.189 mW/g

**Ch512/Zoom Scan (5x5x7)/Cube 0:** Measurement grid: dx=8mm, dy=8mm, dz=5mm

Reference Value = 7.54 V/m; Power Drift = -0.128 dB

Peak SAR (extrapolated) = 0.232 W/kg

**SAR(1 g) = 0.173 mW/g; SAR(10 g) = 0.111 mW/g**

Maximum value of SAR (measured) = 0.191 mW/g

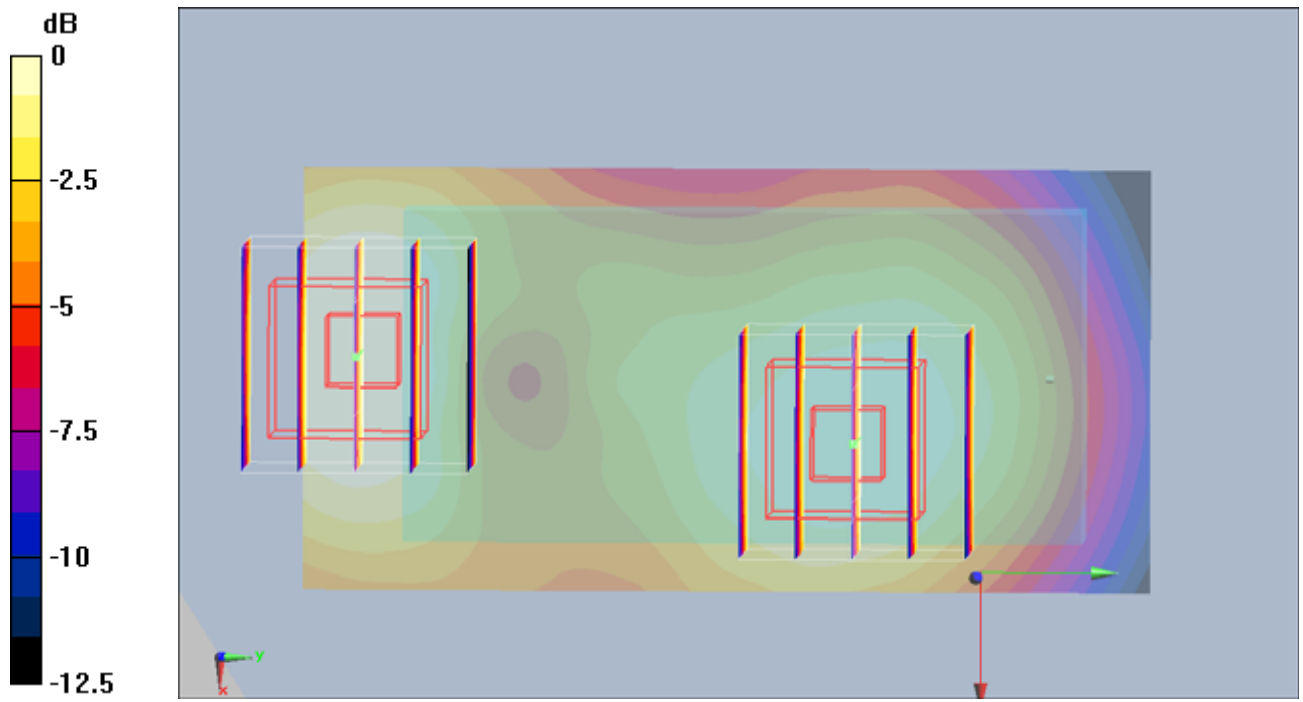
**Ch512/Zoom Scan (5x5x7)/Cube 1:** Measurement grid: dx=8mm, dy=8mm, dz=5mm

Reference Value = 7.54 V/m; Power Drift = -0.128 dB

Peak SAR (extrapolated) = 0.177 W/kg

**SAR(1 g) = 0.145 mW/g; SAR(10 g) = 0.099 mW/g**

Maximum value of SAR (measured) = 0.156 mW/g



0 dB = 0.156mW/g

**#18 GSM1900\_GPRS10\_Bottom\_1.5cm\_Ch512**

**DUT: 001805**

Communication System: PCS 1900; Frequency: 1850.2 MHz; Duty Cycle: 1:4

Medium: MSL\_1900\_100727 Medium parameters used:  $f = 1850.2$  MHz;  $\sigma = 1.5$  mho/m;  $\epsilon_r = 52.2$ ;  $\rho = 1000$

kg/m<sup>3</sup>

Ambient Temperature : 22.3 ; Liquid Temperature : 21.2

DASY5 Configuration:

- Probe: ET3DV6 - SN1788; ConvF(4.52, 4.52, 4.52); Calibrated: 2009/9/23

- Sensor-Surface: 4mm (Mechanical Surface Detection)

- Electronics: DAE4 Sn778; Calibrated: 2009/9/18

- Phantom: SAM-Back; Type: QD 000 P40 C; Serial: TP-1383

- Measurement SW: DASY5, V5.0 Build 125; SEMCAD X Version 13.4 Build 125

**Ch512/Area Scan (41x81x1):** Measurement grid: dx=15mm, dy=15mm

Maximum value of SAR (interpolated) = 0.326 mW/g

**Ch512/Zoom Scan (5x5x7)/Cube 0:** Measurement grid: dx=8mm, dy=8mm, dz=5mm

Reference Value = 9.87 V/m; Power Drift = -0.109 dB

Peak SAR (extrapolated) = 0.379 W/kg

**SAR(1 g) = 0.295 mW/g; SAR(10 g) = 0.199 mW/g**

Maximum value of SAR (measured) = 0.318 mW/g

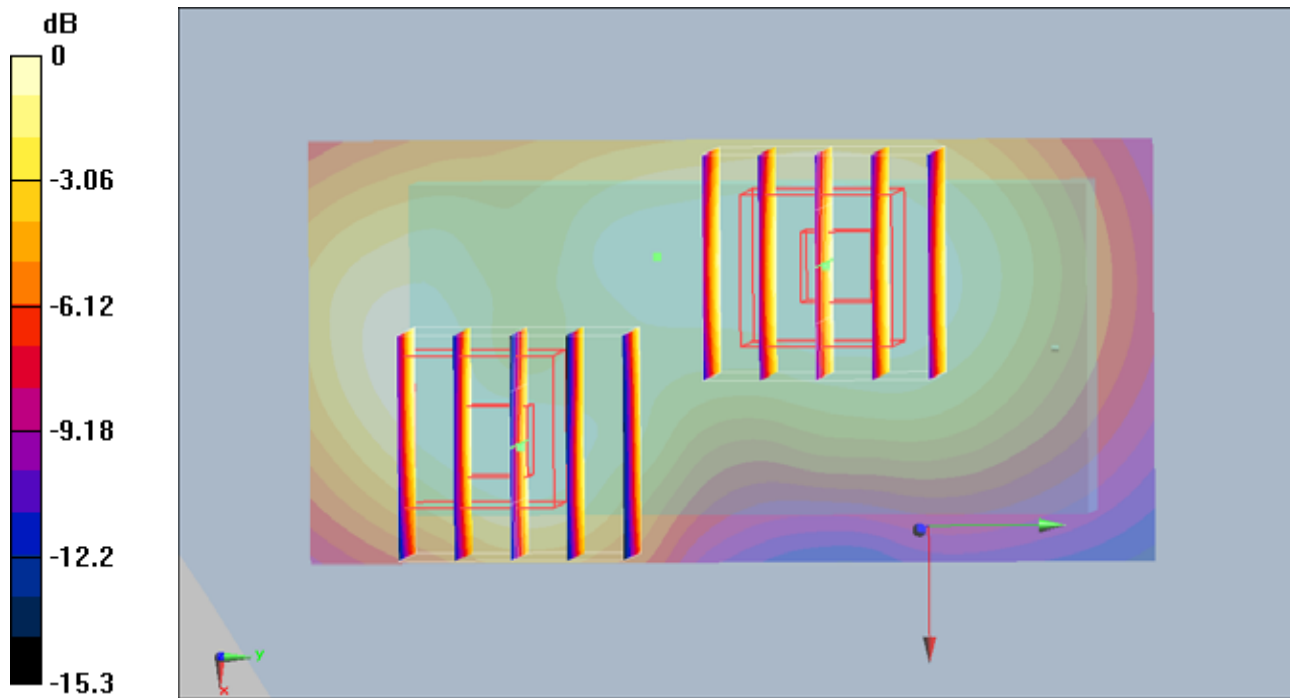
**Ch512/Zoom Scan (5x5x7)/Cube 1:** Measurement grid: dx=8mm, dy=8mm, dz=5mm

Reference Value = 9.87 V/m; Power Drift = -0.109 dB

Peak SAR (extrapolated) = 0.399 W/kg

**SAR(1 g) = 0.281 mW/g; SAR(10 g) = 0.173 mW/g**

Maximum value of SAR (measured) = 0.306 mW/g



0 dB = 0.306mW/g

**#19 GSM1900\_GPRS10\_Bottom\_1.5cm\_Ch661**

**DUT: 001805**

Communication System: PCS 1900; Frequency: 1880 MHz; Duty Cycle: 1:4

Medium: MSL\_1900\_100727 Medium parameters used:  $f = 1880$  MHz;  $\sigma = 1.53$  mho/m;  $\epsilon_r = 52$ ;  $\rho = 1000$

kg/m<sup>3</sup>

Ambient Temperature : 22.5 ; Liquid Temperature : 21.2

DASY5 Configuration:

- Probe: ET3DV6 - SN1788; ConvF(4.52, 4.52, 4.52); Calibrated: 2009/9/23
- Sensor-Surface: 4mm (Mechanical Surface Detection)
- Electronics: DAE4 Sn778; Calibrated: 2009/9/18
- Phantom: SAM-Back; Type: QD 000 P40 C; Serial: TP-1383
- Measurement SW: DASY5, V5.0 Build 125; SEMCAD X Version 13.4 Build 125

**Ch661/Area Scan (41x81x1):** Measurement grid: dx=15mm, dy=15mm

Maximum value of SAR (interpolated) = 0.356 mW/g

**Ch661/Zoom Scan (5x5x7)/Cube 0:** Measurement grid: dx=8mm, dy=8mm, dz=5mm

Reference Value = 8.94 V/m; Power Drift = 0.041 dB

Peak SAR (extrapolated) = 0.432 W/kg

**SAR(1 g) = 0.307 mW/g; SAR(10 g) = 0.187 mW/g**

Maximum value of SAR (measured) = 0.334 mW/g

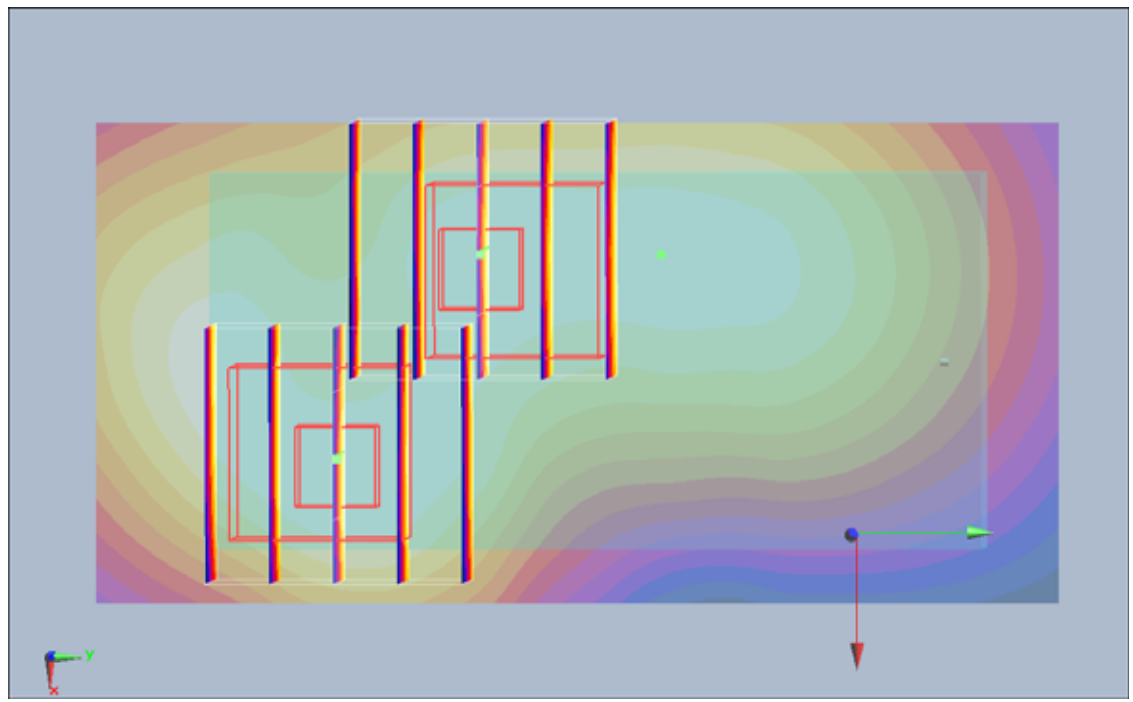
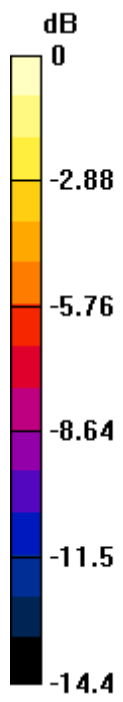
**Ch661/Zoom Scan (5x5x7)/Cube 1:** Measurement grid: dx=8mm, dy=8mm, dz=5mm

Reference Value = 8.94 V/m; Power Drift = 0.041 dB

Peak SAR (extrapolated) = 0.394 W/kg

**SAR(1 g) = 0.285 mW/g; SAR(10 g) = 0.185 mW/g**

Maximum value of SAR (measured) = 0.304 mW/g



0 dB = 0.304mW/g

### #21 GSM1900\_GPRS10\_Bottom\_1.5cm\_Ch810

**DUT: 001805**

Communication System: PCS 1900; Frequency: 1909.8 MHz; Duty Cycle: 1:4

Medium: MSL\_1900\_101016 Medium parameters used:  $f = 1910$  MHz;  $\sigma = 1.54$  mho/m;  $\epsilon_r = 52.8$ ;  $\rho = 1000$  kg/m<sup>3</sup>

Ambient Temperature : 22.7 °C ; Liquid Temperature : 21.4 °C

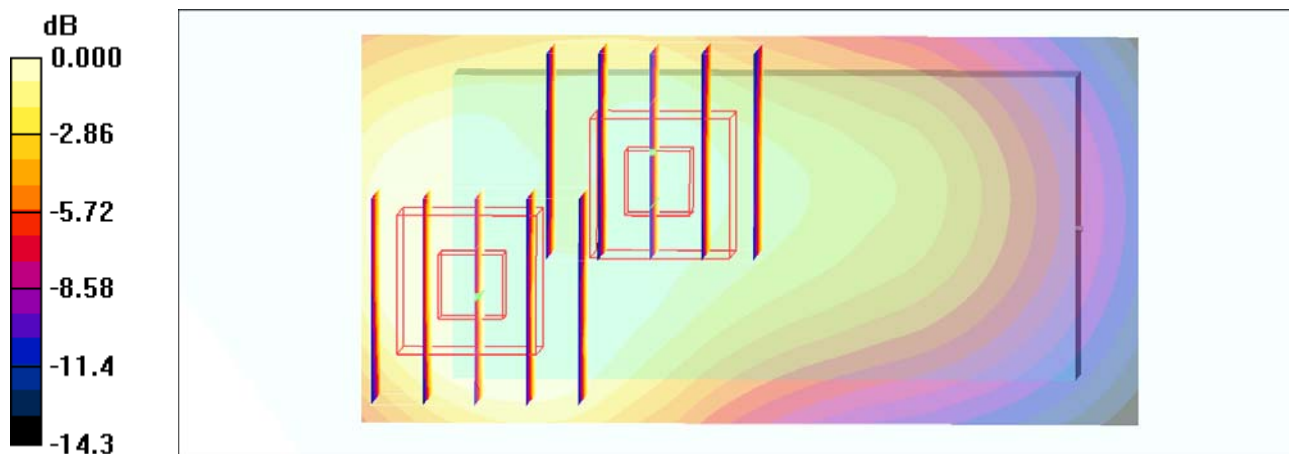
DASY4 Configuration:

- Probe: ET3DV6 - SN1788; ConvF(4.39, 4.39, 4.39); Calibrated: 2010/9/21
- Sensor-Surface: 4mm (Mechanical Surface Detection)
- Electronics: DAE4 Sn905; Calibrated: 2010/6/22
- Phantom: SAM-Right; Type: QD 000 P40 C; Serial: TP-1383
- Measurement SW: DASY4, V4.7 Build 80; Postprocessing SW: SEMCAD, V1.8 Build 186

**Ch810/Area Scan (41x81x1):** Measurement grid: dx=15mm, dy=15mm  
Maximum value of SAR (interpolated) = 0.370 mW/g

**Ch810/Zoom Scan (5x5x7)/Cube 0:** Measurement grid: dx=8mm, dy=8mm, dz=5mm  
Reference Value = 5.56 V/m; Power Drift = -0.066 dB  
Peak SAR (extrapolated) = 0.483 W/kg  
**SAR(1 g) = 0.342 mW/g; SAR(10 g) = 0.210 mW/g**  
Maximum value of SAR (measured) = 0.381 mW/g

**Ch810/Zoom Scan (5x5x7)/Cube 1:** Measurement grid: dx=8mm, dy=8mm, dz=5mm  
Reference Value = 5.56 V/m; Power Drift = -0.066 dB  
Peak SAR (extrapolated) = 0.345 W/kg  
**SAR(1 g) = 0.237 mW/g; SAR(10 g) = 0.148 mW/g**  
Maximum value of SAR (measured) = 0.259 mW/g



0 dB = 0.259mW/g

## #21 GSM1900\_GPRS10\_Bottom\_1.5cm\_Ch810\_2D

**DUT: 001805**

Communication System: PCS 1900; Frequency: 1909.8 MHz; Duty Cycle: 1:4

Medium: MSL\_1900\_101016 Medium parameters used:  $f = 1910$  MHz;  $\sigma = 1.54$  mho/m;  $\epsilon_r = 52.8$ ;

$\rho = 1000$  kg/m<sup>3</sup>

Ambient Temperature : 22.7 °C ; Liquid Temperature : 21.4 °C

DASY4 Configuration:

- Probe: ET3DV6 - SN1788; ConvF(4.39, 4.39, 4.39); Calibrated: 2010/9/21

- Sensor-Surface: 4mm (Mechanical Surface Detection)

- Electronics: DAE4 Sn905; Calibrated: 2010/6/22

- Phantom: SAM-Right; Type: QD 000 P40 C; Serial: TP-1383

- Measurement SW: DASY4, V4.7 Build 80; Postprocessing SW: SEMCAD, V1.8 Build 186

**Ch810/Area Scan (41x81x1):** Measurement grid: dx=15mm, dy=15mm

Maximum value of SAR (interpolated) = 0.370 mW/g

**Ch810/Zoom Scan (5x5x7)/Cube 0:** Measurement grid: dx=8mm, dy=8mm, dz=5mm

Reference Value = 5.56 V/m; Power Drift = -0.066 dB

Peak SAR (extrapolated) = 0.483 W/kg

**SAR(1 g) = 0.342 mW/g; SAR(10 g) = 0.210 mW/g**

Maximum value of SAR (measured) = 0.381 mW/g

**Ch810/Zoom Scan (5x5x7)/Cube 1:** Measurement grid: dx=8mm, dy=8mm, dz=5mm

Reference Value = 5.56 V/m; Power Drift = -0.066 dB

Peak SAR (extrapolated) = 0.345 W/kg

**SAR(1 g) = 0.237 mW/g; SAR(10 g) = 0.148 mW/g**

Maximum value of SAR (measured) = 0.259 mW/g

# 1g/10g Averaged SAR

SAR; Zoom Scan: Value Along Z, X=1, Y=2

