



MOTOROLA

Portable Cellular Phone SAR Test Report

Tests Requested By: Motorola Mobile Devices
NO. 1 WANG JING EAST ROAD
CHAO YANG DISTRICT,
BEIJING, 100102, CHINA

Test Report #: 23287-1

Date of Report: 9-14-2009

Date of Test: 9-1-2009 through 9-7-2009

FCC ID #: IHDP56KX1

Generic Name: WAT6-3411A11
Motorola Mobile Devices Business Product Safety & Compliance Laboratory

Test Laboratory: 11th Floor, Hibrand Living Hall,
215, Yanjae-Dong, Seocho-Gu, Seoul, 137-130,
South Korea
Jon Park

Report Author: Senior Staff Engineer

This laboratory is accredited to ISO/IEC 17025-2005 to perform the following tests:

Accreditation:



TESTING CERT #2518-03

Tests:

Electromagnetic Specific Absorption Rate

Procedures:

IEC 62209-1

RSS-102

IEEE 1528 - 2003

FCC OET Bulletin 65 (including Supplement C)

Australian Communications Authority Radio

Communications (Electromagnetic Radiation – Human Exposure) Standard 2003

CENELEC EN 50360

ARIB Std. T-56 (2002)

On the following products or types of products:

On the following products or types of products: Wireless Communications Devices (Examples): Two Way Radios; Portable Phones (including Cellular, Licensed Non-Broadcast and PCS); Low Frequency Readers; and Pagers

Motorola declares under its sole responsibility that the portable cellular telephone model to which this declaration relates, is in conformity with the appropriate General Population/Uncontrolled RF exposure standards, recommendations and guidelines (FCC 47 CFR §2.1093) as well as with CENELEC en50360:2001 and ANSI / IEEE C95.1. It also declares that the product was tested in accordance with IEEE 1528 / CENELEC EN62209-1 (2006), as well as other appropriate measurement standards, guidelines and recommended practices. Any deviations from these standards, guidelines and recommended practices are noted below:

Statement of Compliance:

(none)

©Motorola, Inc. 2009

This test report shall not be reproduced except in full, without written approval of the laboratory. The results and statements contained herein relate only to the items tested. The names of individuals involved may be mentioned only in connection with the statements or results from this report. Motorola encourages all feedback, both positive and negative, on this test report.

Table of Contents

1. Introduction	3
2. Description of the Device Under Test	3
2.1 Antenna description	3
2.2 Device description	3
3. Test Equipment Used	4
3.1 Dosimetric System	4
3.2 Additional Equipment	4
4. Electrical parameters of the tissue simulating liquid	5
5. System Accuracy Verification	6
6. Test Results	7
6.1 Head Adjacent Test Results	7
6.2 Body Worn Test Results	11
References	14
Appendix 1: SAR distribution comparison for the system accuracy verification	
Appendix 2: SAR distribution plots for Phantom Head Adjacent Use	
Appendix 3: SAR distribution plots for Body Worn Configuration	
Appendix 4: Probe Calibration Certificate	
Appendix 5: Measurement Uncertainty Budget	
Appendix 6: Dipole Characterization Certificate	

1. Introduction

The Motorola Mobile Devices Business Product Safety Laboratory has performed measurements of the maximum potential exposure to the user of the portable cellular phone covered by this test report. The Specific Absorption Rate (SAR) of this product was measured. The portable cellular phone was tested in accordance with [1], [4] and [5]. The SAR values measured for the portable cellular phone are below the maximum recommended levels of 1.6 W/kg in a 1g average set in [3] and 2.0W/kg in a 10g average set in [2].

For ANSI / IEEE C95.1 (1g), the final SAR reading for this phone is 0.50 W/kg for head adjacent use and 0.46 W/kg for body worn use. These measurements were performed using a Dasy4™ v4.7 system manufactured by Schmid & Partner Engineering AG (SPEAG), of Zurich Switzerland.

2. Description of the Device Under Test

2.1 Antenna description

Type	Internal Antenna	
Location	Bottom of the Transceiver	
Dimensions	Width	12 mm
	Length	35.2 mm
Configuration	Monopole	

2.2 Device description

Serial Number	35669403005002					
Mode(s) of Operation	GSM 900	GSM 1800	GSM 1900	TD-SCDMA 2017	Wi-Fi 802.11b/g	Bluetooth
Modulation Mode(s)	GSMK	GSMK	GSMK	QPSK	BPSK	GFSK
Maximum Output Power Setting	33.0 dBm	30.0 dBm	30.0 dBm	24.0 dBm	17.0 dBm	10.0 dBm
Duty Cycle	1:8	1:8	1:8	1:1	1:1	1:1
Transmitting Frequency Range(s)	880.2 - 914.8 MHz	1710.2 - 1784.8 MHz	1850.2 - 1909.8 MHz	826.4 - 846.6 MHz	2412.0 - 2462.5 MHz	2400.0 - 2483.5 MHz
Production Unit or Identical Prototype (47 CFR §2.908)	Identical Prototype					
Device Category	Portable					
RF Exposure Limits	General Population / Uncontrolled					

Mode(s) of Operation	GPRS 900		GPRS 1800		GPRS 1900	
Modulation	GMSK		GMSK		GMSK	
Maximum Output Power Setting	33.0 dBm	33.0 dBm	30.0 dBm	30.0 dBm	30.0 dBm	30.0 dBm
Duty Cycle	1:8	2:8	1:8	2:8	1:8	2:8
Transmitting Frequency Range(s)	880.2 - 914.8 MHz		1710.2 - 1784.8 MHz		1850.2 - 1909.8 MHz	
Mode(s) of Operation	EDGE 900		EDGE 1800		EDGE 1900	
Modulation	8PSK		8PSK		8PSK	
Maximum Output Power Setting	27.5 dBm	27.5 dBm	26.5 dBm	26.5 dBm	26.5 dBm	26.5 dBm
Duty Cycle	1:8	2:8	1:8	2:8	1:8	2:8
Transmitting Frequency Range(s)	880.2 - 914.8 MHz		1710.2 - 1784.8 MHz		1850.2 - 1909.8 MHz	

3. Test Equipment Used

3.1 Dosimetric System

The Motorola Mobile Devices Business Product Safety & Compliance Laboratory utilizes a Dosimetric Assessment System (Dasy4™ v4.7) manufactured by Schmid & Partner Engineering AG (SPEAG™), of Zurich Switzerland. All the SAR measurements are taken within a shielded enclosure. The overall 10g RSS uncertainty of the measurement system is $\pm 10.8\%$ (K=1) with an expanded uncertainty of $\pm 21.6\%$ (K=2). The overall 1g RSS uncertainty of the measurement system is $\pm 11.1\%$ (K=1) with an expanded uncertainty of $\pm 22.2\%$ (K=2). The measurement uncertainty budget is given in Appendix 5. Per IEEE 1528, this uncertainty budget is applicable to the SAR range of 0.4W/kg to 10W/kg.

The list of calibrated equipment used for the measurements is shown in the following table.

Description	Serial Number	Cal Due Date
DASY4™ DAE 3	398	11-06-2009
E-Field Probe ES3DV3	3180	7-21-2010
S.A.M. Phantom used for 1800/1900/2450MHz	TP-1086	
Dipole Validation Kit, DV1800V2	280tr	4-1-2010
Dipole Validation Kit, DV2450V2	767	4-1-2010

3.2 Additional Equipment

Description	Serial Number	Cal Due Date
Signal Generator HP8648C	3847A04630	Jan-21-2010
Power Meter E4419B	US39250623	Jan-21-2010
Power Sensor #1 - 8481A	US37296472	Jan-21-2010
Power Sensor #2 - 8481A	US39250623	Jan-21-2010
Network Analyzer HP8753ES	US39172714	Jan-22-2010
Dielectric Probe Kit HP85070C	US99936027	

4. Electrical parameters of the tissue simulating liquid

Prior to conducting SAR measurements, the relative permittivity, ϵ_r , and the conductivity, σ , of the tissue simulating liquids were measured with a HP85070 Dielectric Probe Kit. These values, along with the temperature of the simulated tissue are shown in the table below. The recommended limits for permittivity and conductivity are also shown. A mass density of $\rho=1\text{g/cm}^3$ was entered into the system in all the cases. It can be seen that the measured parameters are within tolerance of the recommended limits specified in [1] and [5].

f (MHz)	Tissue type	Limits / Measured	Dielectric Parameters		
			ϵ_r	σ (S/m)	Temp (°C)
1880	Head	Measured, 9-1-2009	39.1	1.46	20.8
		Recommended Limits	40.0 ±5%	1.40 ±5%	18-25
	Body	Measured, 9-2-2009	52.8	1.57	20.9
		Recommended Limits	53.3 ±5%	1.52 ±5%	18-25
2450	Head	Measured, 9-3-2009	38.8	1.86	20.5
		Recommended Limits	39.2 ±10%	1.80 ±5%	18-25
	Body	Measured, 9-3-2009	49.2	2.03	22.0
		Measured, 9-7-2009	49.0	2.04	21.6
		Recommended Limits	52.7 ±10%	1.95 ±5%	18-25

The list of ingredients and the percent composition used for the tissue simulates are indicated in the table below.

Ingredient	835MHz / 900 MHz Head	835MHz / 900 MHz Body	1800MHz / 1900 MHz Head	1800 MHz / 1900 MHz Body	2450MHz Head	2450 MHz Body
Sugar	57	44.9	--	--	--	--
DGBE	--	--	47	30.8	--	30
Diacetin	--	--	--	--	51	--
Water	40.45	53.06	52.62	68.8	48.75	70
Salt	1.45	0.94	0.38	0.4	0.15	--
HEC	1	1	--	--	--	--
Bact.	0.1	0.1	--	--	0.1	--

5. System Accuracy Verification

A system accuracy verification of the DASY4™ was performed using the measurement equipment listed in Section 3.1. The daily system accuracy verification occurs within the flat section of the SAM phantom.

A SAR measurement was performed to verify the measured SAR was within $\pm 10\%$ from the target SAR indicated in Appendix 6. These frequencies are within $\pm 10\%$ of the compliance test mid-band frequency as required in [1] and [5]. The test was conducted on the same days as the measurement of the DUT. Recommended limits for permittivity and conductivity, specified in [5], are shown in the table below. The obtained results from the system accuracy verification are also displayed in the table below. SAR values are normalized to 1W forward power delivered to the dipole. It is seen that the system is operating within its specification, as the results are within acceptable tolerance of the reference values. The distributions of SAR compare well with those of the reference measurements (see Appendix 1). The tissue stimulant depth was verified to be 15.0cm ± 0.5 cm. Z-axis scans showing the SAR penetration are also included in Appendix 1.

f (MHz)	Description	SAR (W/kg), 1gram	Dielectric Parameters		Ambient Temp (°C)	Tissue Temp (°C)
			ϵ_r	σ (S/m)		
1800	Measured, 9-1-2009	38.78	39.5	1.38	21.3	21.3
	Measured, 9-2-2009	38.53	39.1	1.38	21.1	20.9
	Recommended Limits	37.91	40.0 $\pm 5\%$	1.4 $\pm 5\%$	18-25	18-25
2450	Measured, 9-3-2009	51.5	38.8	1.86	20.5	21.5
	Measured, 9-7-2009	52.25	38.4	1.84	21.4	22.2
	Recommended Limits	56.68	39.2 $\pm 10\%$	1.80 $\pm 5\%$	18-25	18-25

The following probe conversion factors were used on the E-Field probe(s) used for the system accuracy verification measurements:

Description	Serial Number	f (MHz)	Conversion Factor	Cal Cert pg #
E-Field Probe ES3DV3	SN3180	1810	5.15	8 of 9
		2450	4.47	8 of 9

6. Test Results

The test sample was operated using an actual transmission through a base station simulator. The base station simulator was setup to the proper channel, transmitter power level and transmit mode of operation. The phone was tested in the configurations stipulated in [1], [4] and [5]. The phone was positioned into these configurations using the device holder supplied with the DASY4™ SAR measurement system. The measured dielectric constant of the material used for the device holder is less than 2.9 and the loss tangent is less than 0.02 ($\pm 30\%$) at 850MHz. The default settings for the “coarse” and “cube” scans were chosen and used for measurements. The grid spacing of the course scan was set to 15 mm as shown in the SAR plots included in Appendix 2 and 3. Please refer to the DASY4™ manual for additional information on SAR scanning procedures and algorithms used.

The Cellular Phone model covered by this report has the following battery options:

SNN5837A – 1140 mAH Battery

SNN5833A – 930 mAH Battery

The battery with the highest capacity is the SNN5837A. This battery was used to do most of the SAR testing. The phone was placed in the SAR measurement system with a fully charged battery. The configuration that resulted in the highest SAR values were tested using the other batteries listed above.

6.1 Head Adjacent Test Results

The SAR results shown in tables 1 through 6 are maximum SAR values averaged over 1 gram of phantom tissue, to demonstrate compliance to [3] and also over 10 grams of phantom tissue, to demonstrate compliance to the [6]. Also shown are the measured conducted output power levels, the temperature of the simulated tissue after the test, the measured drift and the extrapolated SAR. The exact method of extrapolation is $\text{New SAR} = \text{Old SAR} * 10^{(-\text{drift}/10)}$. The SAR reported at the end of the measurement process by the DASY4™ measurement system can be scaled up by the measured drift to determine the SAR at the beginning of the measurement process. This is the most conservative SAR because it corresponds to the average output power at the beginning of the SAR test. This extrapolation has been done because when the DUT is operating properly it may exhibit a slump in radiated power and SAR over time. This is verified by measuring the SAR drift after the test.

The left head and right head SAR contour distributions are similar. Because of this similarity, the cheek/touch and 15° tilt test conditions with the highest SAR values in each band are indicated as bold numbers in the following tables and are included in Appendix 2. All other test conditions measured lower SAR values than those included in Appendix 2.

The SAR measurements were performed using the SAM phantoms listed in section 3.1. Since the same phantoms and simulated tissue were used for the system accuracy verification and the device SAR measurements, the Z-axis scans included in Appendix 1 are applicable for verification of simulated tissue depth to be 15.0cm \pm 0.5cm.

The following probe conversion factors were used on the E-Field probe(s) used for the head adjacent measurements:

Description	Serial Number	f (MHz)	Conversion Factor	Cal Cert pg #
E-Field Probe ES3DV3	SN3180	1810	5.15	8 of 9
		2450	4.47	8 of 9

Left Head Cheek Position								
<i>f</i> (MHz)	Description	Conducted Output Power (dBm)	Temp (°C)	Drift (dB)	<i>10 g SAR value</i>		<i>1 g SAR value</i>	
					Measured (W/kg)	Extrapolated (W/kg)	Measured (W/kg)	Extrapolated (W/kg)
GSM 1900	Channel 512	30.06						
	Channel 661	29.96	20.8	0.000469	0.235	0.24	0.388	0.39
	Channel 810	29.95						
WI-FI 2450	Channel 1							
	Channel 6	17.18	21.3	0.135	0.0559	0.06	0.0968	0.10
	Channel 11							
<i>GSM 1900 + WI-FI</i>						0.30		0.49

Table 1: SAR measurement results at the highest possible output power, measured in a head cheek position against the ICNIRP and ANSI SAR Limit.

Right Head Cheek Position								
<i>f</i> (MHz)	Description	Conducted Output Power (dBm)	Temp (°C)	Drift (dB)	<i>10 g SAR value</i>		<i>1 g SAR value</i>	
					Measured (W/kg)	Extrapolated (W/kg)	Measured (W/kg)	Extrapolated (W/kg)
GSM 1900	Channel 512	30.06						
	Channel 661	29.96	20.8	-0.0706	0.189	0.19	0.323	0.33
	Channel 810	29.95						
WI-FI 2450	Channel 1							
	Channel 6	17.18	20.8	0.0835	0.0797	0.08	0.151	0.15
	Channel 11							
<i>GSM 1900 + WI-FI</i>						0.27		0.48

Table 2: SAR measurement results at the highest possible output power, measured in a head cheek position against the ICNIRP and ANSI SAR Limit.

<i>The noted highest Head Cheek Position with SNN5833A Battery</i>								
<i>f</i> (MHz)	Description	Conducted Output Power (dBm)	Temp (°C)	Drift (dB)	<i>10 g SAR value</i>		<i>1 g SAR value</i>	
					Measured (W/kg)	Extrapolated (W/kg)	Measured (W/kg)	Extrapolated (W/kg)
GSM 1900 Left	Channel 512	30.06						
	Channel 661	29.96	21.7	0.012	0.236	0.24	0.392	0.39
	Channel 810	29.95						
WI-FI 2450 Left	Channel 1							
	Channel 6	17.18	20.4	0.159	0.0628	0.06	0.109	0.11
	Channel 11							
WI-FI 2450 Right	Channel 1							
	Channel 6	17.18	20.5	-0.0323	0.0836	0.08	0.158	0.16
	Channel 11							
GSM 1900 + WI-FI						0.30		0.50

Table 3: SAR measurement results at the highest possible output power, measured in a head cheek position against the ICNIRP and ANSI SAR Limit.

<i>Left Head 15° Tilt Position</i>								
<i>f</i> (MHz)	Description	Conducted Output Power (dBm)	Temp (°C)	Drift (dB)	<i>10 g SAR value</i>		<i>1 g SAR value</i>	
					Measured (W/kg)	Extrapolated (W/kg)	Measured (W/kg)	Extrapolated (W/kg)
GSM 1900	Channel 512	30.06						
	Channel 661	29.96	20.7	0.119	0.108	0.11	0.186	0.19
	Channel 810	29.95						
WI-FI 2450	Channel 1							
	Channel 6	17.18	21	0.0431	0.0475	0.05	0.0902	0.09
	Channel 11							
GSM 1900 + WI-FI						0.16		0.28

Table 4: SAR measurement results at the highest possible output power, measured in a head 15° Tilt position against the ICNIRP and ANSI SAR Limit.

Right Head 15° Tilt Position								
<i>f</i> (MHz)	Description	Conducted Output Power (dBm)	Temp (°C)	Drift (dB)	<i>10 g SAR value</i>		<i>1 g SAR value</i>	
					Measured (W/kg)	Extrapolated (W/kg)	Measured (W/kg)	Extrapolated (W/kg)
GSM 1900	Channel 512	30.06						
	Channel 661	29.96	20.8	-0.0158	0.141	0.14	0.245	0.25
	Channel 810	29.95						
WI-FI 2450	Channel 1							
	Channel 6	17.18	20.6	-0.0726	0.051	0.05	0.095	0.10
	Channel 11							
<i>GSM 1900 + WI-FI</i>						0.19		0.35

Table 5: SAR measurement results at the highest possible output power, measured in a head 15° Tilt position against the ICNIRP and ANSI SAR Limit.

The noted Highest Head 15° Tilt Position with SNN5833A Battery								
<i>f</i> (MHz)	Description	Conducted Output Power (dBm)	Temp (°C)	Drift (dB)	<i>10 g SAR value</i>		<i>1 g SAR value</i>	
					Measured (W/kg)	Extrapolated (W/kg)	Measured (W/kg)	Extrapolated (W/kg)
	Channel 885	29.85						
GSM 1900 Right	Channel 512	30.06						
	Channel 661	29.96	21.5	0.0224	0.137	0.14	0.235	0.24
	Channel 810	29.95						
WI-FI 2450 Left	Channel 1							
	Channel 6	17.18	20.4	0.126	0.0549	0.05	0.105	0.11
	Channel 11							
WI-FI 2450 Right	Channel 1							
	Channel 6	17.18	20.5	0.163	0.052	0.05	0.0966	0.10
	Channel 11							
<i>GSM 1900 + WI-FI</i>						0.19		0.34

Table 6: SAR measurement results at the highest possible output power, measured in a head 15° Tilt position against the ICNIRP and ANSI SAR Limit.

6.2 Body Worn Test Results

The SAR results shown in tables 7 through 10 are maximum SAR values averaged over 1 gram of phantom tissue, to demonstrate compliance to [3] and also over 10 grams of phantom tissue, to demonstrate compliance to the [6]. Also shown are the measured conducted output power levels, the temperature of the test facility during the test, the temperature of the tissue simulate after the test, the measured drift and the extrapolated SAR. The exact method of extrapolation is $\text{New SAR} = \text{Old SAR} * 10^{(-\text{drift}/10)}$. The SAR reported at the end of the measurement process by the DASY4™ measurement system can be scaled up by the measured drift to determine the SAR at the beginning of the measurement process. This is the most conservative SAR because it corresponds to the average output power at the beginning of the SAR test. This extrapolation has been done because when the DUT is operating properly it may exhibit a slump in radiated power and SAR over time. This is verified by measuring the SAR drift after the test.

The test conditions that produced the highest SAR values in each band are indicated as bold numbers in the following tables and are included in Appendix 3. All other test conditions measured lower SAR values than those included in Appendix 3.

A “flat” phantom was for the body-worn tests. This “flat” phantom is made out of 1” thick natural High Density Polyethylene with a thickness at the bottom equal to 2.0mm. It measures 52.7cm(long) x 26.7cm(wide) x 21.2cm(tall). The measured dielectric constant of the material used is less than 2.3 and the loss tangent is less than 0.0046 all the way up to 2.184GHz.

The tissue stimulant depth was verified to be 15.0cm ±0.5cm. The same device holder described in section 6 was used for positioning the phone. The functional accessories were divided into two categories, the ones with metal components and the ones with non-metal components. For non-metallic component accessories’, testing was performed on the accessory that displayed the closest proximity to the flat phantom. Each metallic component accessory, if any, was checked for uniqueness of metal component so that each is tested with the device. If multiple accessories shared an identical metal component, only the accessory that dictates the closest spacing to the body was tested. The cellular phone was tested with a headset connected to the device for all body-worn SAR measurements.

There are no Body-Worn Accessories available for this phone at the time of testing hence the device was tested per the supplement C testing guidelines for devices that do not have body worn accessories. A separation distance of 15mm between the device and the flat phantom was used for testing body-worn SAR. The device was tested with the front and back of the device facing the phantom.

In addition to accessory testing, the cellular phone was tested in data mode operations with the front and back of the phone facing the phantom. For these tests, a separation distance of 25mm between the device and the flat phantom was used. The device was tested with the front and back of the device facing the phantom.

The following probe conversion factors were used on the E-Field probe(s) used for the body worn measurements:

Description	Serial Number	f (MHz)	Conversion Factor	Cal Cert pg #
E-Field Probe ES3DV3	SN3180	1810	4.76	8 of 9
		2450	4.15	8 of 9

Body-Worn; Front of Phone 15mm from Phantom								
<i>f</i> (MHz)	Description	Conducted Output Power (dBm)	Temp (°C)	Drift (dB)	<i>10 g SAR value</i>		<i>1 g SAR value</i>	
					Measured (W/kg)	Extrapolated (W/kg)	Measured (W/kg)	Extrapolated (W/kg)
GSM 1900	Channel 512	30.06						
	Channel 661	29.96	21.3	0.0521	0.149	0.15	0.245	0.25
	Channel 810	29.95						
WI-FI 2450	Channel 1							
	Channel 6	17.18	22	0.0171	0.0289	0.03	0.0496	0.05
	Channel 11							
Bluetooth 2450	Channel 0							
	Channel 39	8.96	21.6	0.48	0.00137	0.00	0.00319	0.00
	Channel 78							
<i>GSM 1900 + WI-FI</i>						0.18		0.30

Table 7: SAR measurement results at the highest possible output power, measured in a body-worn position against the ICNIRP and ANSI SAR Limit.

Body-Worn; Back of Phone 15mm from Phantom								
<i>f</i> (MHz)	Description	Conducted Output Power (dBm)	Temp (°C)	Drift (dB)	<i>10 g SAR value</i>		<i>1 g SAR value</i>	
					Measured (W/kg)	Extrapolated (W/kg)	Measured (W/kg)	Extrapolated (W/kg)
GSM 1900	Channel 512	30.06						
	Channel 661	29.96	21.2	-0.0126	0.207	0.21	0.333	0.33
	Channel 810	29.95						
WI-FI 2450	Channel 1							
	Channel 6	17.18	21.8	-0.0755	0.0569	0.06	0.0982	0.10
	Channel 11							
Bluetooth 2450	Channel 0							
	Channel 39	8.96	21.4	-0.392	0.001	0.00	0.00222	0.00
	Channel 78							
<i>GSM 1900 + WI-FI</i>						0.27		0.43

Table 8: SAR measurement results at the highest possible output power, measured in a body-worn position against the ICNIRP and ANSI SAR Limit.

Body-Worn; Back of Phone 25mm from Phantom								
<i>f</i> (MHz)	Description	Conducted Output Power (dBm)	Temp (°C)	Drift (dB)	<i>10 g SAR value</i>		<i>1 g SAR value</i>	
					Measured (W/kg)	Extrapolated (W/kg)	Measured (W/kg)	Extrapolated (W/kg)
GPRS 1900 Class 10	Channel 512	30.10						
	Channel 661	29.98	21.1	0.0539	0.107	0.11	0.273	0.27
	Channel 810	30.00						
EDGE1900 Class 10	Channel 512	26.49						
	Channel 661	26.45	21.9	0.00338	0.0563	0.06	0.0872	0.09
	Channel 810	26.39						
WI-FI 2450	Channel 1							
	Channel 6	17.18	21.6	-0.0803	0.0216	0.02	0.037	0.04
	Channel 11							
Bluetooth 2450	Channel 0							
	Channel 39	8.96	21.2	0.0394	0.000727	0.00	0.00223	0.00
	Channel 78							
<i>GPRS 1900 + WI-FI</i>						0.13		0.31
<i>EDGE 1900 + WI-FI</i>						0.08		0.13

Table 9: SAR measurement results at the highest possible output power, measured in a body-worn position against the ICNIRP and ANSI SAR Limit.

The noted Highest Body-Worn Position with SNN5833A Battery								
<i>f</i> (MHz)	Description	Conducted Output Power (dBm)	Temp (°C)	Drift (dB)	<i>10 g SAR value</i>		<i>1 g SAR value</i>	
					Measured (W/kg)	Extrapolated (W/kg)	Measured (W/kg)	Extrapolated (W/kg)
GSM 1900 <i>Back 15mm</i>	Channel 512	30.06						
	Channel 661	29.96	20.9	-0.0456	0.219	0.22	0.354	0.36
	Channel 810	29.95						
WI-FI 2450 <i>Back 15mm</i>	Channel 1							
	Channel 6	17.18	22.0	0.146	0.0589	0.06	0.0987	0.10
	Channel 11							
Bluetooth 2450 <i>Back 15mm</i>	Channel 0							
	Channel 39	8.96	20.8	0.841	0.0014	0.00	0.00275	0.00
	Channel 78							
<i>GSM 1900 + WI-FI</i>						0.28		0.46

Table 10: SAR measurement results at the highest possible output power, measured in a body-worn position against the ICNIRP and ANSI SAR Limit.

References

- [1] CENELEC, en62209-1:2006 “Human Exposure to Radio Frequency Fields From Hand - Held and Body - Mounted Wireless Communication Devices – Human Models, Instrumentation, and Procedures”
- [2] CENELEC, en50360:2001 “Product standard to demonstrate the compliance of mobile phones with the basic restrictions related to human exposure to electromagnetic fields (300MHz – 3GHz)”.
- [3] ANSI / IEEE, C95.1 1999 Edition “IEEE Standard for Safety Levels with Respect to Human Exposure to Radio Frequency Electromagnetic Fields, 3kHz to 300GHz”
- [4] FCC OET Bulletin 65 Supplement C 01-01
- [5] IEEE 1528 2003 Edition “IEEE Recommended Practice for Determining the Peak Spatial-Average Specific Absorption Rate (SAR) in the Human Head from Wireless Communications Devices: Measurement Techniques”
- [6] ICNIRP Guidelines “Guidelines for Limiting Exposure to Time-Varying Electric, Magnetic, and Electromagnetic Fields (up to 300 GHz)”

Appendix 1

SAR distribution comparison for the system accuracy verification

Test Laboratory: Motorola **20090901_1800MHz_+2.3%**

Procedure Notes: 1800 MHz System Performance Check / Dipole Sn# 280tr PM1 Power = 200 mW

Sim.Temp@meas = 21.3 °C Sim.Temp@SPC = 21.3 °C Room Temp @ SPC = 21.3 °C

Communication System: CW - Dipole; Frequency: 1800 MHz; Channel Number: 8; Duty Cycle: 1:1

Medium: VALIDATION Only; Medium parameters used: $f = 1800$ MHz; $\sigma = 1.38$ mho/m; $\epsilon_r = 39.5$; $\rho = 1000$ kg/m³

DASY4 Configuration:

- Probe: ES3DV3 - SN3180; ConvF(5, 5, 5); Calibrated: 07/21/2009
- Sensor-Surface: 4mm (Mechanical Surface Detection)
- Electronics: DAE3 Sn398; Calibrated: 11/06/2008
- Phantom: PCS-10_ Glycol SAM (extended range), Rev.1 (25-Mar-05); Type: SAM v4.0; Serial: TP-1086;
- Measurement SW: DASY4, V4.7 Build 80; Postprocessing SW: SEMCAD, V1.8 Build 186

Daily SPC Check/Dipole Area Scan (4x9x1): Measurement grid: dx=15mm, dy=15mm

Maximum value of SAR (measured) = 6.79 mW/g

Daily SPC Check/0-Degree, 5x5x7 Cube (5x5x7)/Cube 0: Measurement grid: dx=8mm, dy=8mm, dz=5mm

Reference Value = 78.5 V/m; Power Drift = 0.012 dB

Peak SAR (extrapolated) = 14.0 W/kg

SAR(1 g) = 7.7 mW/g; SAR(10 g) = 4.03 mW/g

Maximum value of SAR (measured) = 8.63 mW/g

Daily SPC Check/90-Degree 5x5x7 Cube (5x5x7)/Cube 0: Measurement grid: dx=8mm, dy=8mm, dz=5mm

Reference Value = 78.5 V/m; Power Drift = 0.012 dB

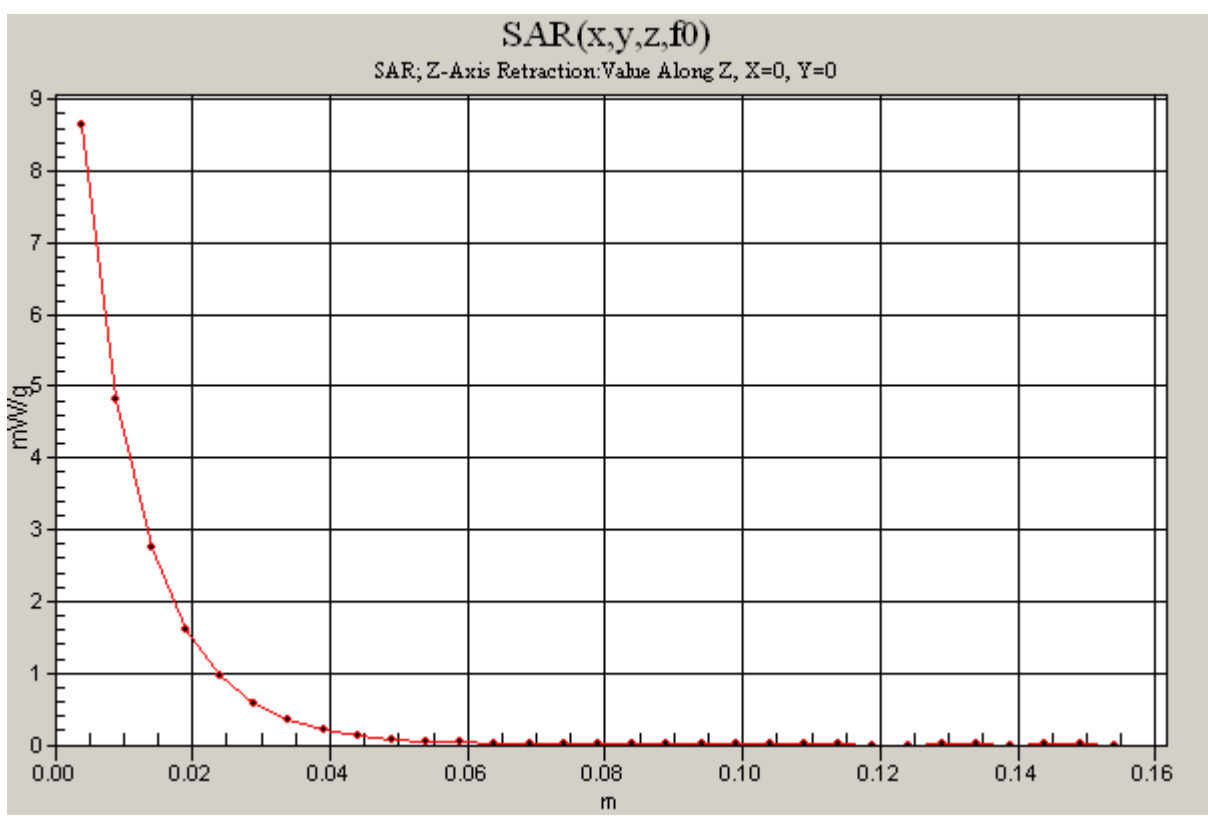
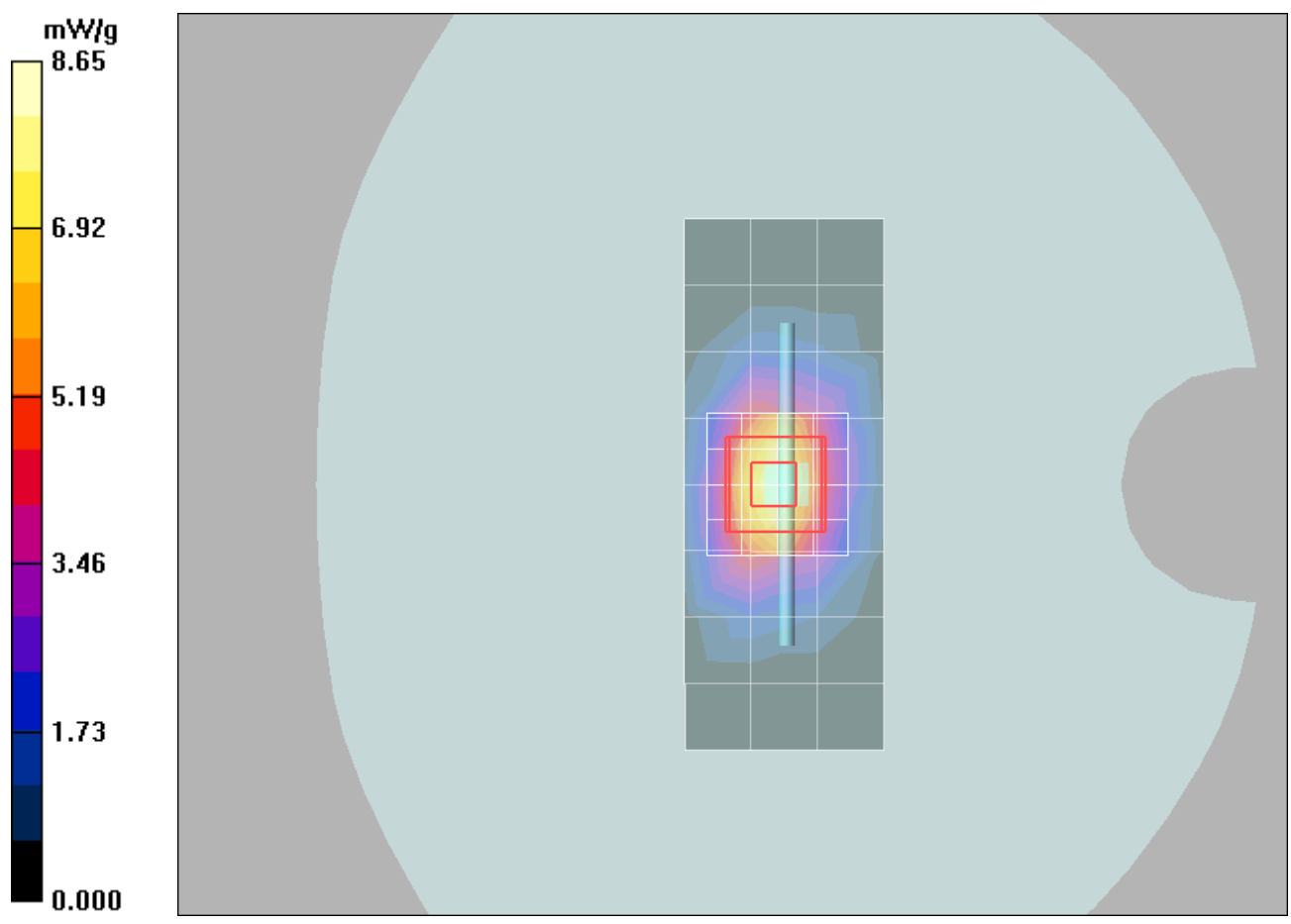
Peak SAR (extrapolated) = 14.4 W/kg

SAR(1 g) = 7.81 mW/g; SAR(10 g) = 4.06 mW/g

Maximum value of SAR (measured) = 8.74 mW/g

Daily SPC Check/Z-Axis Retraction (1x1x31): Measurement grid: dx=20mm, dy=20mm, dz=5mm

Maximum value of SAR (measured) = 8.65 mW/g



Test Laboratory: Motorola**20090902_1800MHz_+1.6%**

Procedure Notes: 1800 MHz System Performance Check / Dipole Sn# 280tr PM1 Power = 200 mW

Sim.Temp@meas = 21 ° C Sim.Temp@SPC = 20.9 ° C Room Temp @ SPC = 21.1 ° C

Communication System: CW - Dipole; Frequency: 1800 MHz; Channel Number: 8; Duty Cycle: 1:1

Medium: VALIDATION Only; Medium parameters used: $f = 1800$ MHz; $\sigma = 1.38$ mho/m; $\epsilon_r = 39.1$; $\rho = 1000$ kg/m³

DASY4 Configuration:

- Probe: ES3DV3 - SN3180; ConvF(5, 5, 5); Calibrated: 07/21/2009
- Sensor-Surface: 4mm (Mechanical Surface Detection)
- Electronics: DAE3 Sn398; Calibrated: 11/06/2008
- Phantom: PCS-10_ Glycol SAM (extended range), Rev.1 (25-Mar-05); Type: SAM v4.0; Serial: TP-1086;
- Measurement SW: DASY4, V4.7 Build 80; Postprocessing SW: SEMCAD, V1.8 Build 186

Daily SPC Check/Dipole Area Scan (4x9x1): Measurement grid: dx=15mm, dy=15mm

Maximum value of SAR (measured) = 6.71 mW/g

Daily SPC Check/0-Degree, 5x5x7 Cube (5x5x7)/Cube 0: Measurement grid: dx=8mm, dy=8mm, dz=5mm

Reference Value = 78.4 V/m; Power Drift = 0.006 dB

Peak SAR (extrapolated) = 13.9 W/kg

SAR(1 g) = 7.63 mW/g; SAR(10 g) = 3.99 mW/g

Maximum value of SAR (measured) = 8.55 mW/g

Daily SPC Check/90-Degree 5x5x7 Cube (5x5x7)/Cube 0: Measurement grid: dx=8mm, dy=8mm, dz=5mm

Reference Value = 78.4 V/m; Power Drift = 0.006 dB

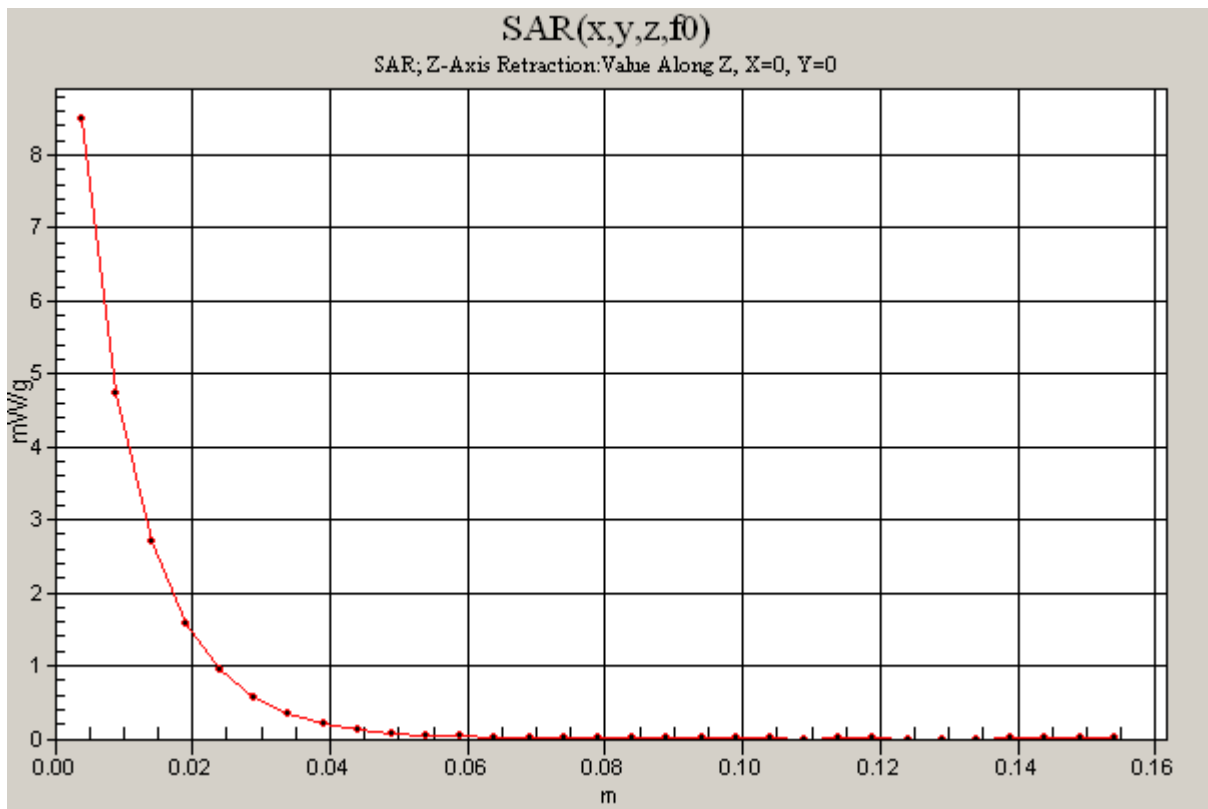
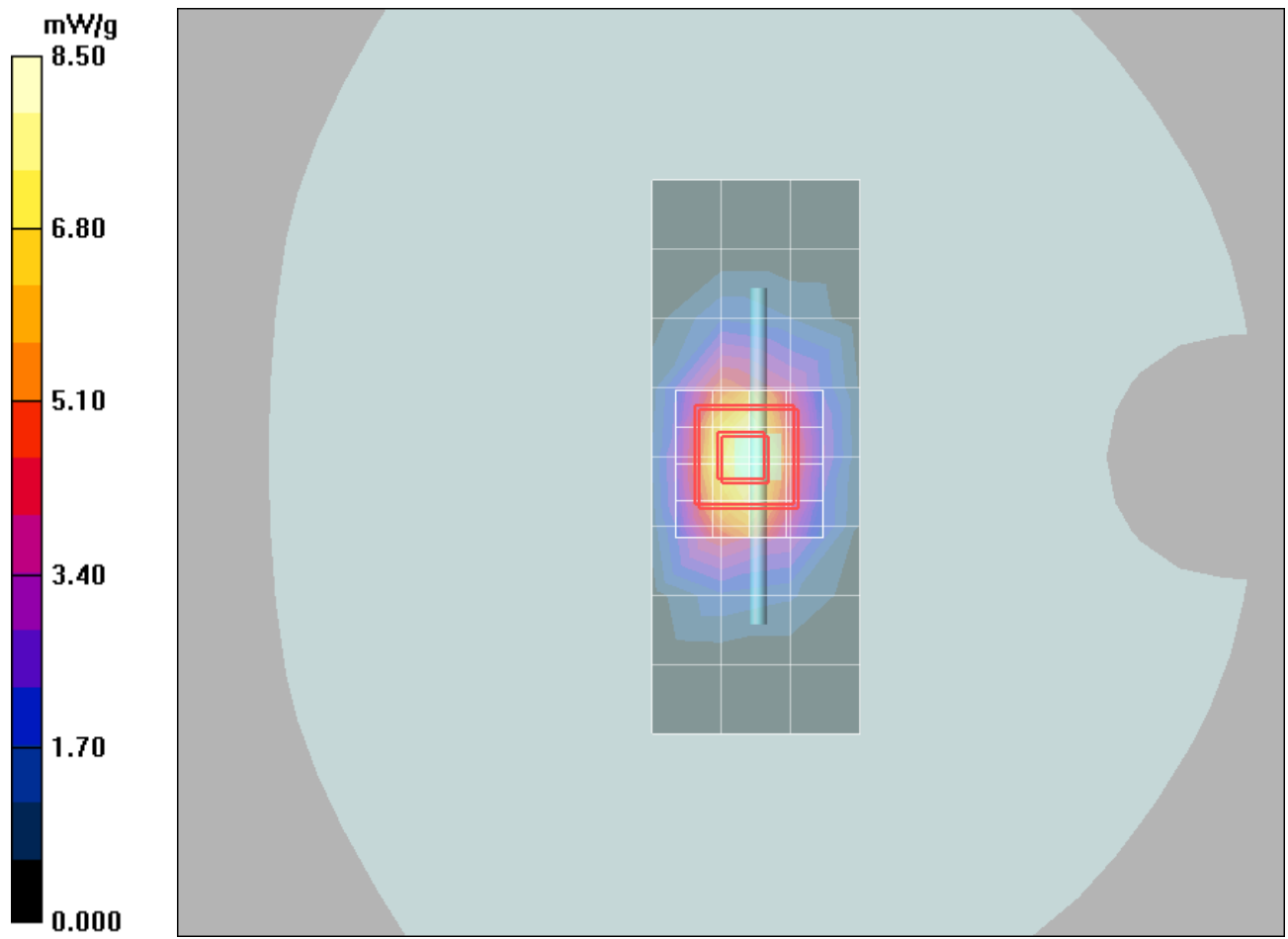
Peak SAR (extrapolated) = 14.4 W/kg

SAR(1 g) = 7.78 mW/g; SAR(10 g) = 4.03 mW/g

Maximum value of SAR (measured) = 8.52 mW/g

Daily SPC Check/Z-Axis Retraction (1x1x31): Measurement grid: dx=20mm, dy=20mm, dz=5mm

Maximum value of SAR (measured) = 8.50 mW/g



Test Laboratory: Motorola 20090903_2450MHz_-9.1%

Procedure Notes: 2450 MHz System Performance Check / Dipole Sn# 767 PM1 Power = 200 mW

Sim.Temp@meas = 21.5 ° C Sim.Temp@SPC = 21.5 ° C Room Temp @ SPC = 20.5 ° C

Communication System: CW - Dipole; Frequency: 2450 MHz; Channel Number: 11; Duty Cycle: 1:1

Medium: VALIDATION Only; Medium parameters used: $f = 2450$ MHz; $\sigma = 1.86$ mho/m; $\epsilon_r = 38.8$; $\rho = 1000$ kg/m³

DASY4 Configuration:

- Probe: ES3DV3 - SN3180; ConvF(4.44, 4.44, 4.44); Calibrated: 07/21/2009
- Sensor-Surface: 4mm (Mechanical Surface Detection)
- Electronics: DAE3 Sn398; Calibrated: 11/06/2008
- Phantom: PCS-10_ Glycol SAM (extended range), Rev.1 (25-Mar-05); Type: SAM v4.0; Serial: TP-1086;
- Measurement SW: DASY4, V4.7 Build 80; Postprocessing SW: SEMCAD, V1.8 Build 186

Daily SPC Check/Dipole Area Scan (4x9x1): Measurement grid: dx=15mm, dy=15mm

Maximum value of SAR (measured) = 8.38 mW/g

Daily SPC Check/0-Degree, 5x5x7 Cube (5x5x7)/Cube 0: Measurement grid: dx=8mm, dy=8mm, dz=5mm

Reference Value = 78.7 V/m; Power Drift = 0.020 dB

Peak SAR (extrapolated) = 21.3 W/kg

SAR(1 g) = 10.2 mW/g; SAR(10 g) = 4.71 mW/g

Maximum value of SAR (measured) = 11.5 mW/g

Daily SPC Check/90-Degree 5x5x7 Cube (5x5x7)/Cube 0: Measurement grid: dx=8mm, dy=8mm, dz=5mm

Reference Value = 78.7 V/m; Power Drift = 0.020 dB

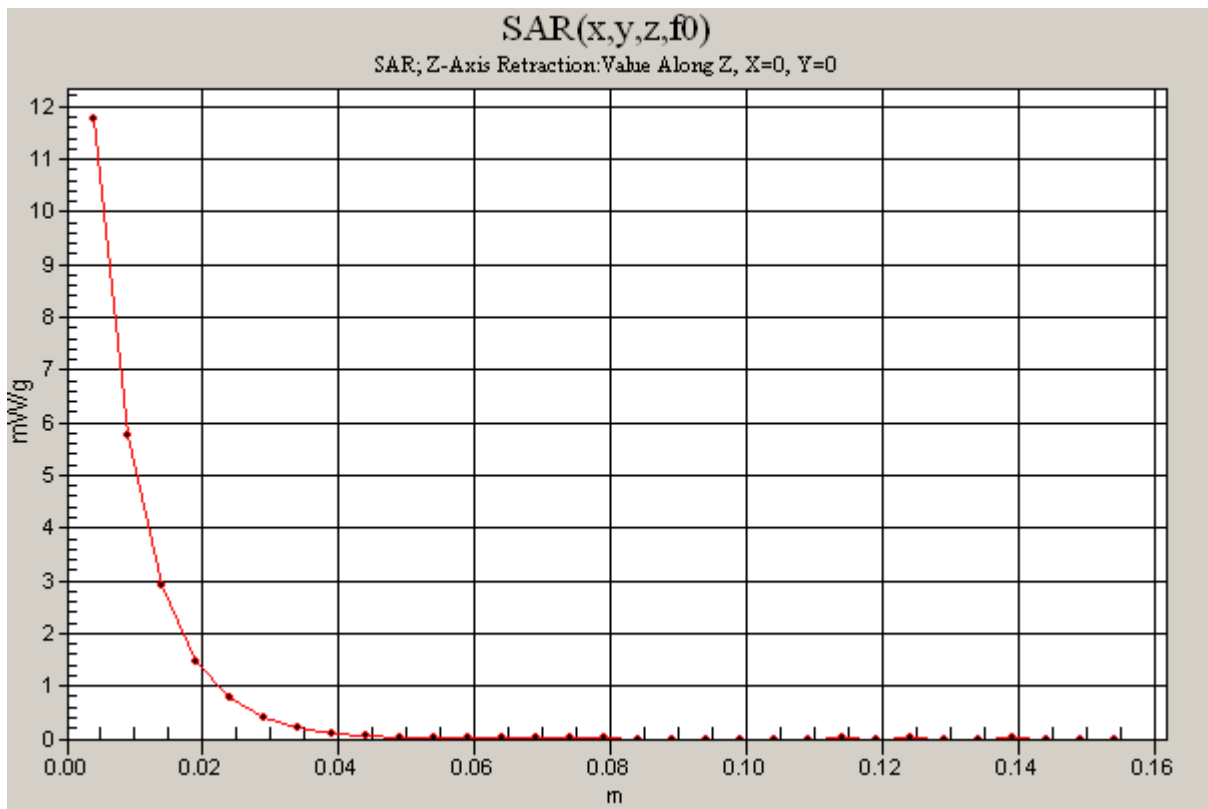
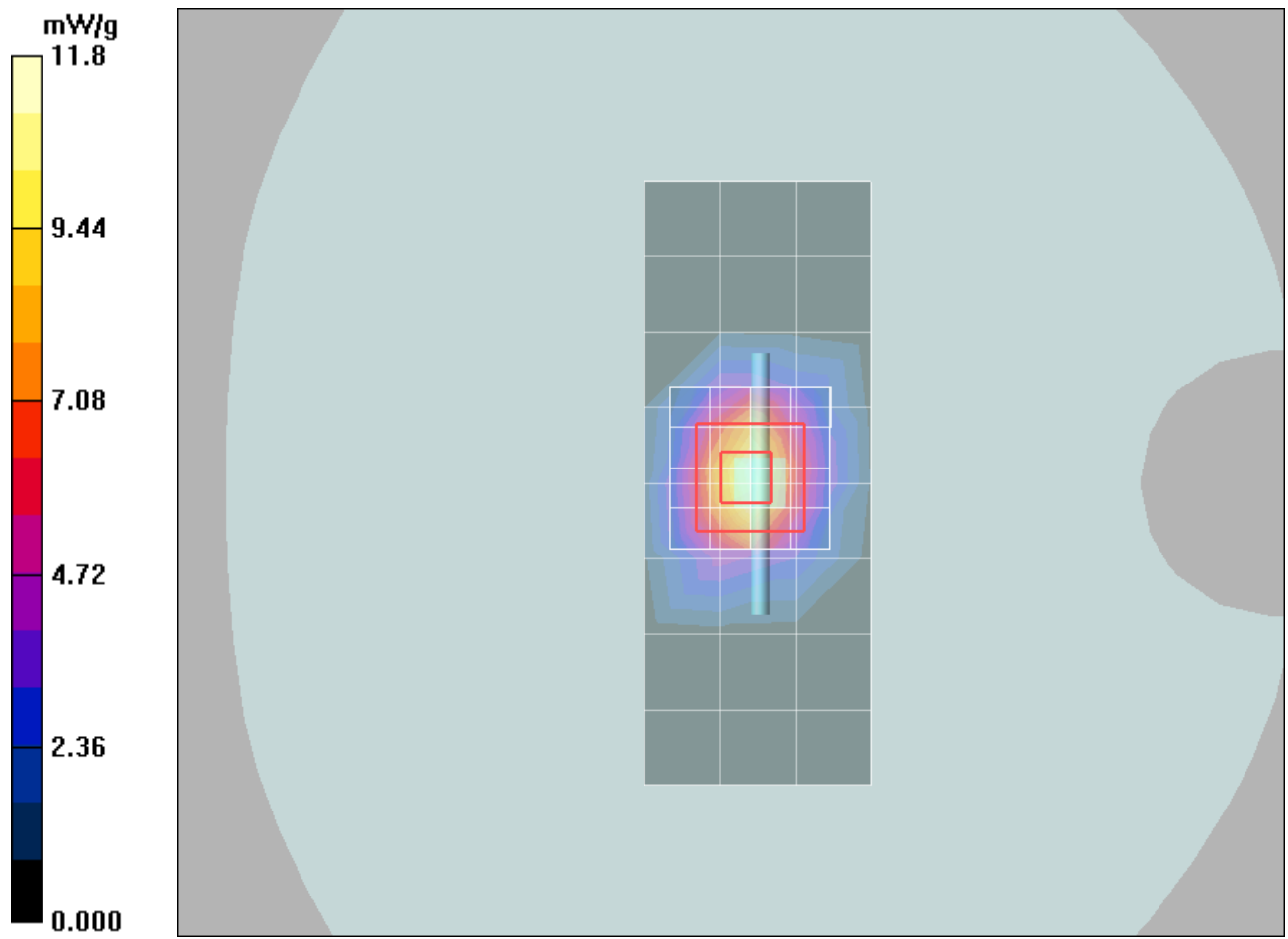
Peak SAR (extrapolated) = 22.1 W/kg

SAR(1 g) = 10.4 mW/g; SAR(10 g) = 4.75 mW/g

Maximum value of SAR (measured) = 11.7 mW/g

Daily SPC Check/Z-Axis Retraction (1x1x31): Measurement grid: dx=20mm, dy=20mm, dz=5mm

Maximum value of SAR (measured) = 11.8 mW/g



Test Laboratory: Motorola 20090907_2450MHz_-7.8%

Procedure Notes: 2450 MHz System Performance Check / Dipole Sn# 767 PM1 Power = 200 mW

Sim.Temp@meas = 22.3 ° C Sim.Temp@SPC = 22.2 ° C Room Temp @ SPC = 21.4 ° C

Communication System: CW - Dipole; Frequency: 2450 MHz; Channel Number: 11; Duty Cycle: 1:1

Medium: VALIDATION Only; Medium parameters used: $f = 2450$ MHz; $\sigma = 1.84$ mho/m; $\epsilon_r = 38.4$; $\rho = 1000$ kg/m³

DASY4 Configuration:

- Probe: ES3DV3 - SN3180; ConvF(4.44, 4.44, 4.44); Calibrated: 07/21/2009
- Sensor-Surface: 4mm (Mechanical Surface Detection)
- Electronics: DAE3 Sn398; Calibrated: 11/06/2008
- Phantom: PCS-10_ Glycol SAM (extended range), Rev.1 (25-Mar-05); Type: SAM v4.0; Serial: TP-1086;
- Measurement SW: DASY4, V4.7 Build 80; Postprocessing SW: SEMCAD, V1.8 Build 186

Daily SPC Check/Dipole Area Scan (4x9x1): Measurement grid: dx=15mm, dy=15mm

Maximum value of SAR (measured) = 7.64 mW/g

Daily SPC Check/0-Degree, 5x5x7 Cube (5x5x7)/Cube 0: Measurement grid: dx=8mm, dy=8mm, dz=5mm

Reference Value = 80.6 V/m; Power Drift = 0.010 dB

Peak SAR (extrapolated) = 21.9 W/kg

SAR(1 g) = 10.4 mW/g; SAR(10 g) = 4.77 mW/g

Maximum value of SAR (measured) = 11.7 mW/g

Daily SPC Check/90-Degree 5x5x7 Cube (5x5x7)/Cube 0: Measurement grid: dx=8mm, dy=8mm, dz=5mm

Reference Value = 80.6 V/m; Power Drift = 0.010 dB

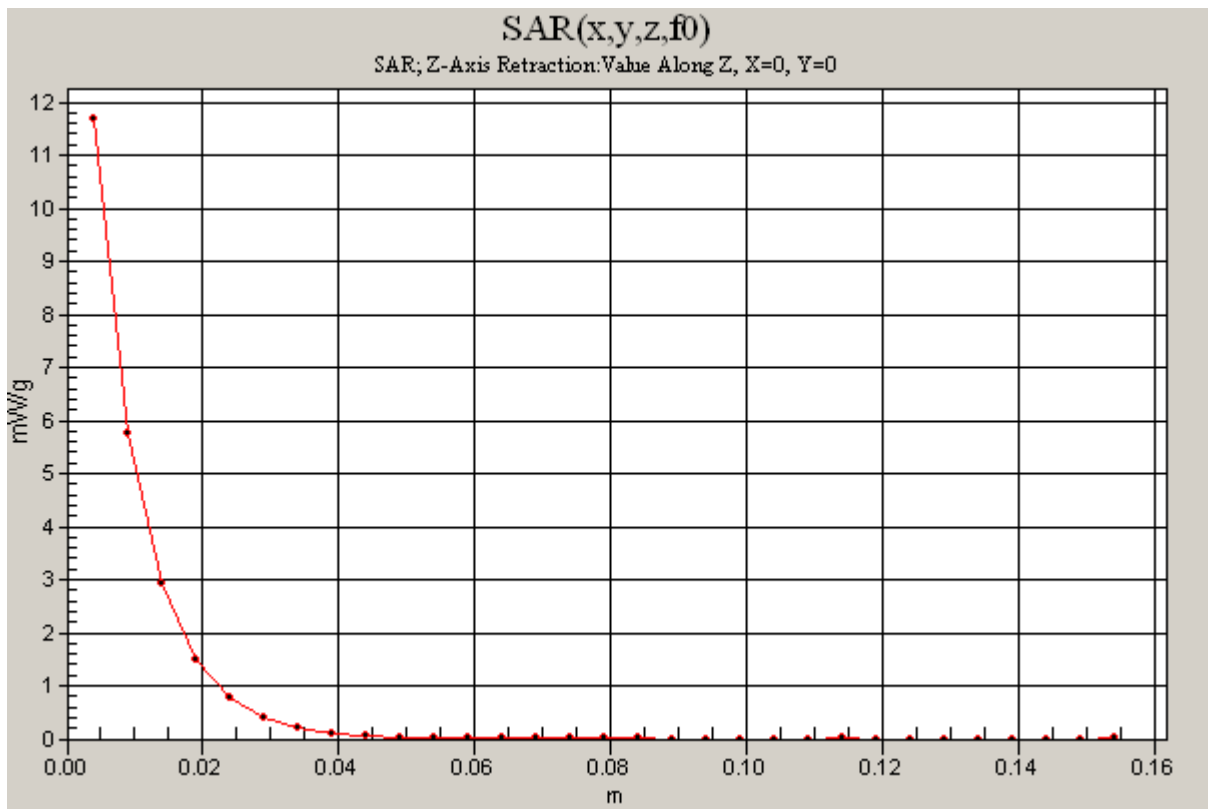
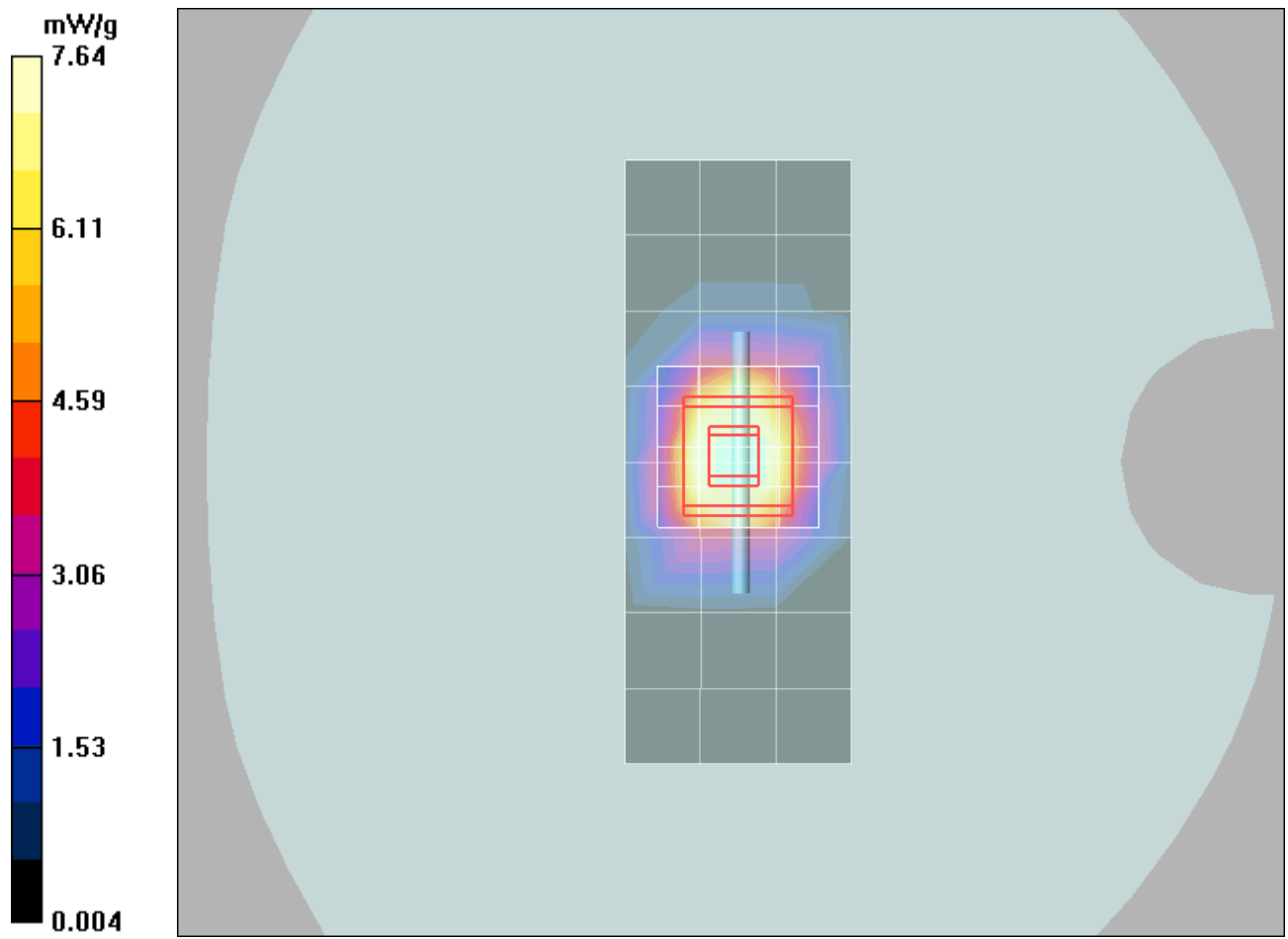
Peak SAR (extrapolated) = 22.1 W/kg

SAR(1 g) = 10.5 mW/g; SAR(10 g) = 4.8 mW/g

Maximum value of SAR (measured) = 11.6 mW/g

Daily SPC Check/Z-Axis Retraction (1x1x31): Measurement grid: dx=20mm, dy=20mm, dz=5mm

Maximum value of SAR (measured) = 11.7 mW/g



Appendix 2

SAR distribution plots for Phantom Head Adjacent Use

Test Laboratory: Motorola GSM1900 Check**35669403005002;**

Procedure Notes: Pwr Step: 00(OTA) Antenna Position: Internal

Battery Model #: SNN5837A DEVICE POSITION (cheek or rotated): Cheek

Communication System: GSM 1900; Frequency: 1880 MHz; Channel Number: 661; Duty Cycle: 1:8

Medium: Regular Glycol Head 1750/1880; Medium parameters used: $f = 1880$ MHz; $\sigma = 1.46$ mho/m; $\epsilon_r = 39.1$; $\rho = 1000$ kg/m³

DASY4 Configuration:

- Probe: ES3DV3 - SN3180; ConvF(5, 5, 5); Calibrated: 07/21/2009
- Sensor-Surface: 4mm (Mechanical Surface Detection)
- Electronics: DAE3 Sn398; Calibrated: 11/06/2008
- Phantom: PCS-10_ Glycol SAM (extended range), Rev.1 (25-Mar-05); Type: SAM v4.0; Serial: TP-1086;
- Measurement SW: DASY4, V4.7 Build 80; Postprocessing SW: SEMCAD, V1.8 Build 186

Left Head Template/Area Scan - Normal (15mm) (7x17x1): Measurement grid: dx=15mm, dy=15mm
 Maximum value of SAR (measured) = 0.422 mW/g

Left Head Template/5x5x7 Zoom Scan (<=3GHz) (5x5x7)/Cube 0:

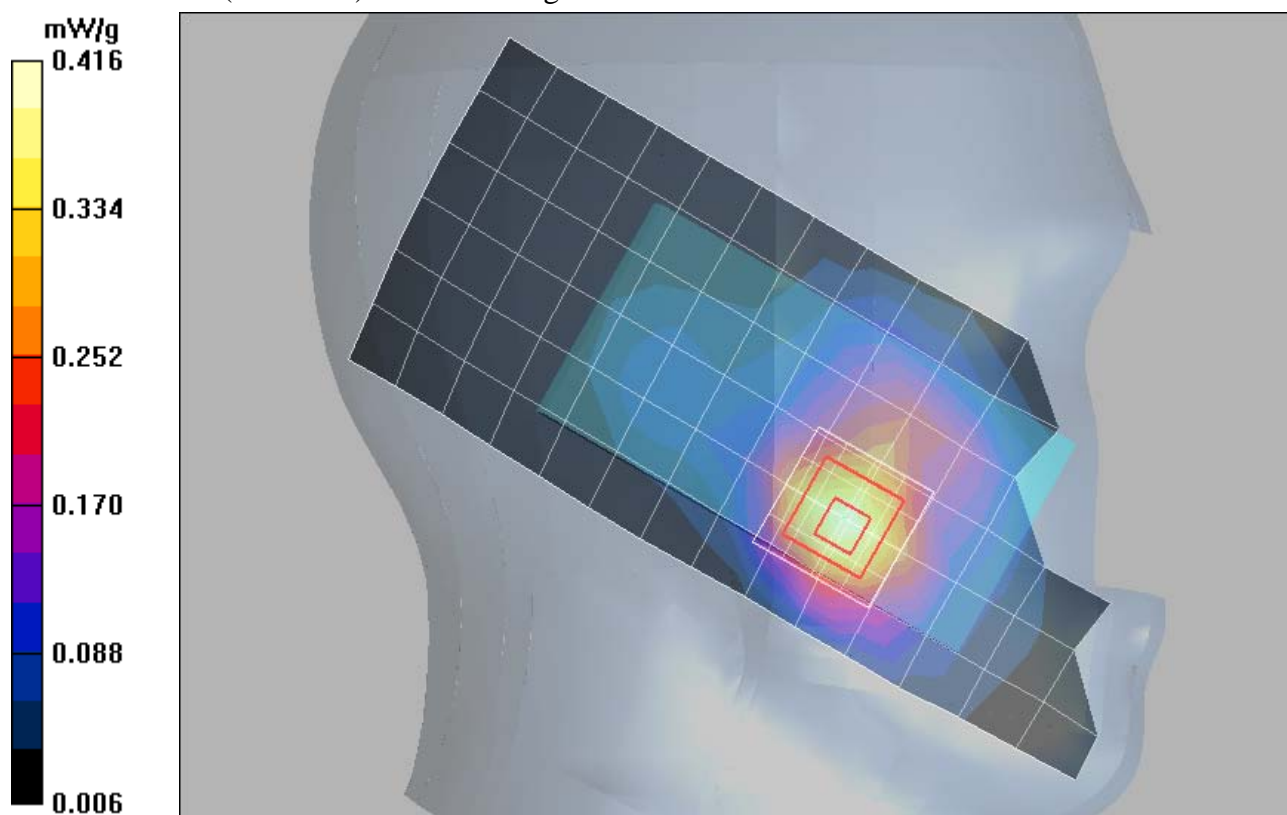
Measurement grid: dx=8mm, dy=8mm, dz=5mm

Reference Value = 14.8 V/m; Power Drift = 0.000 dB

Peak SAR (extrapolated) = 0.591 W/kg

SAR(1 g) = 0.388 mW/g; SAR(10 g) = 0.235 mW/g

Maximum value of SAR (measured) = 0.416 mW/g



Test Laboratory: Motorola

WiFi 2450 Cheek

35669403005002;

Procedure Notes: Pwr Step: 17dBm(Test Mode) Antenna Position: Internal

Battery Model #: SNN5833A DEVICE POSITION (cheek or rotated): Cheek

Communication System: Wi-Fi 2450; Frequency: 2437 MHz; Channel Number: 6; Duty Cycle: 1:1

Medium: 2450 Glycol Head; Medium parameters used: $f = 2450$ MHz; $\sigma = 1.86$ mho/m; $\epsilon_r = 38.8$; $\rho = 1000$ kg/m³

DASY4 Configuration:

- Probe: ES3DV3 - SN3180; ConvF(4.44, 4.44, 4.44); Calibrated: 07/21/2009
- Sensor-Surface: 4mm (Mechanical Surface Detection)
- Electronics: DAE3 Sn398; Calibrated: 11/06/2008
- Phantom: PCS-10_ Glycol SAM (extended range), Rev.1 (25-Mar-05); Type: SAM v4.0; Serial: TP-1086;
- Measurement SW: DASY4, V4.7 Build 80; Postprocessing SW: SEMCAD, V1.8 Build 186

Right Head Template/Area Scan - Normal (10mm) (10x25x1): Measurement grid: dx=10mm, dy=10mm

Maximum value of SAR (measured) = 0.172 mW/g

Right Head Template/5x5x7 Zoom Scan (<=3GHz) - to correct max outside (5x5x7)/Cube 0:

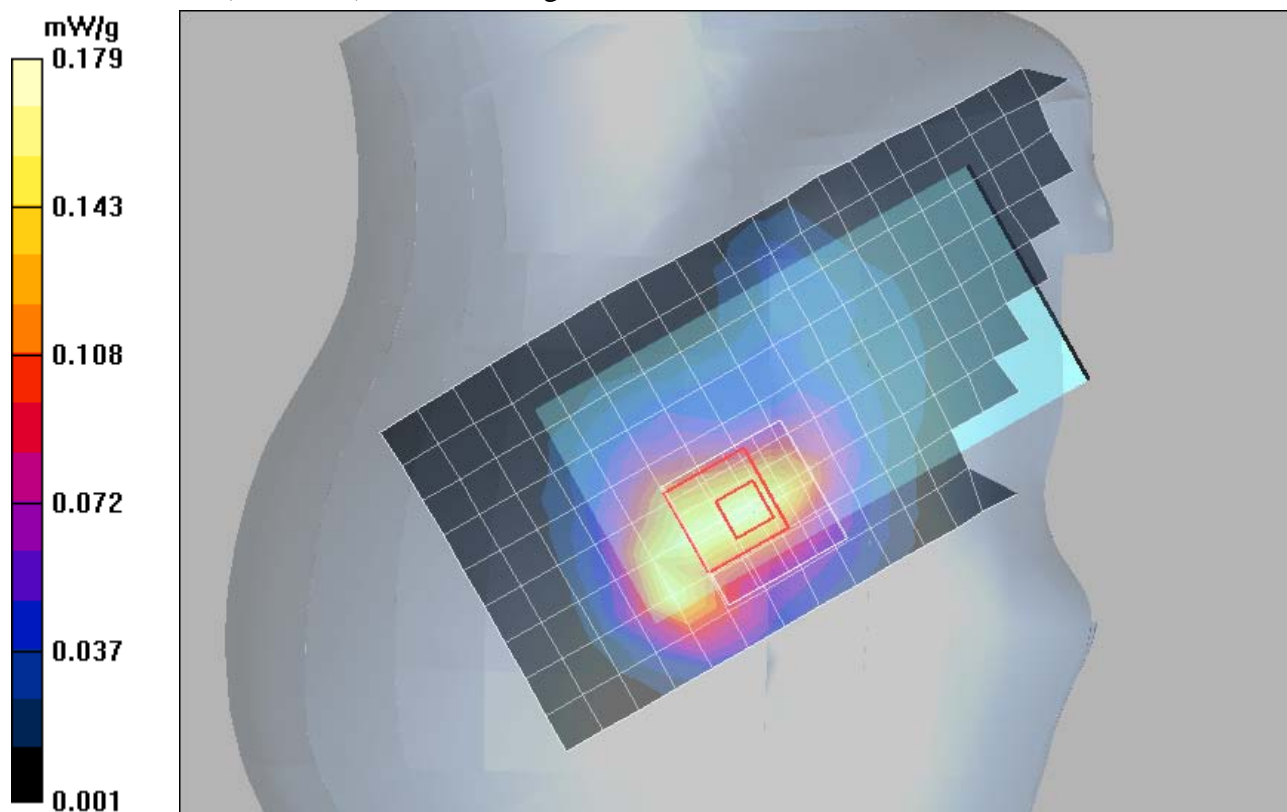
Measurement grid: dx=8mm, dy=8mm, dz=5mm

Reference Value = 9.29 V/m; Power Drift = -0.032 dB

Peak SAR (extrapolated) = 0.305 W/kg

SAR(1 g) = 0.158 mW/g; SAR(10 g) = 0.084 mW/g

Maximum value of SAR (measured) = 0.179 mW/g



Test Laboratory: Motorola GSM1900 Tilted**35669403005002;**

Procedure Notes: Pwr Step: 00(OTA) Antenna Position: Internal

Battery Model #: SNN5837A DEVICE POSITION (cheek or rotated): Rotated

Communication System: GSM 1900; Frequency: 1880MHz; Channel Number: 661; Duty Cycle: 1:8

Medium: Regular Glycol Head 1750/1880; Medium parameters used: $f = 1880 \text{ MHz}$; $\sigma = 1.46 \text{ mho/m}$; $\epsilon_r = 39.1$; $\rho = 1000 \text{ kg/m}^3$

DASY4 Configuration:

- Probe: ES3DV3 - SN3180; ConvF(5, 5, 5); Calibrated: 07/21/2009
- Sensor-Surface: 4mm (Mechanical Surface Detection)
- Electronics: DAE3 Sn398; Calibrated: 11/06/2008
- Phantom: PCS-10_ Glycol SAM (extended range), Rev.1 (25-Mar-05); Type: SAM v4.0; Serial: TP-1086;
- Measurement SW: DASY4, V4.7 Build 80; Postprocessing SW: SEMCAD, V1.8 Build 186

Right Head Template/Area Scan - Normal (15mm) (7x17x1): Measurement grid: dx=15mm, dy=15mm

Maximum value of SAR (measured) = 0.230 mW/g

Right Head Template/5x5x7 Zoom Scan (<=3GHz) (5x5x7)/Cube 0:

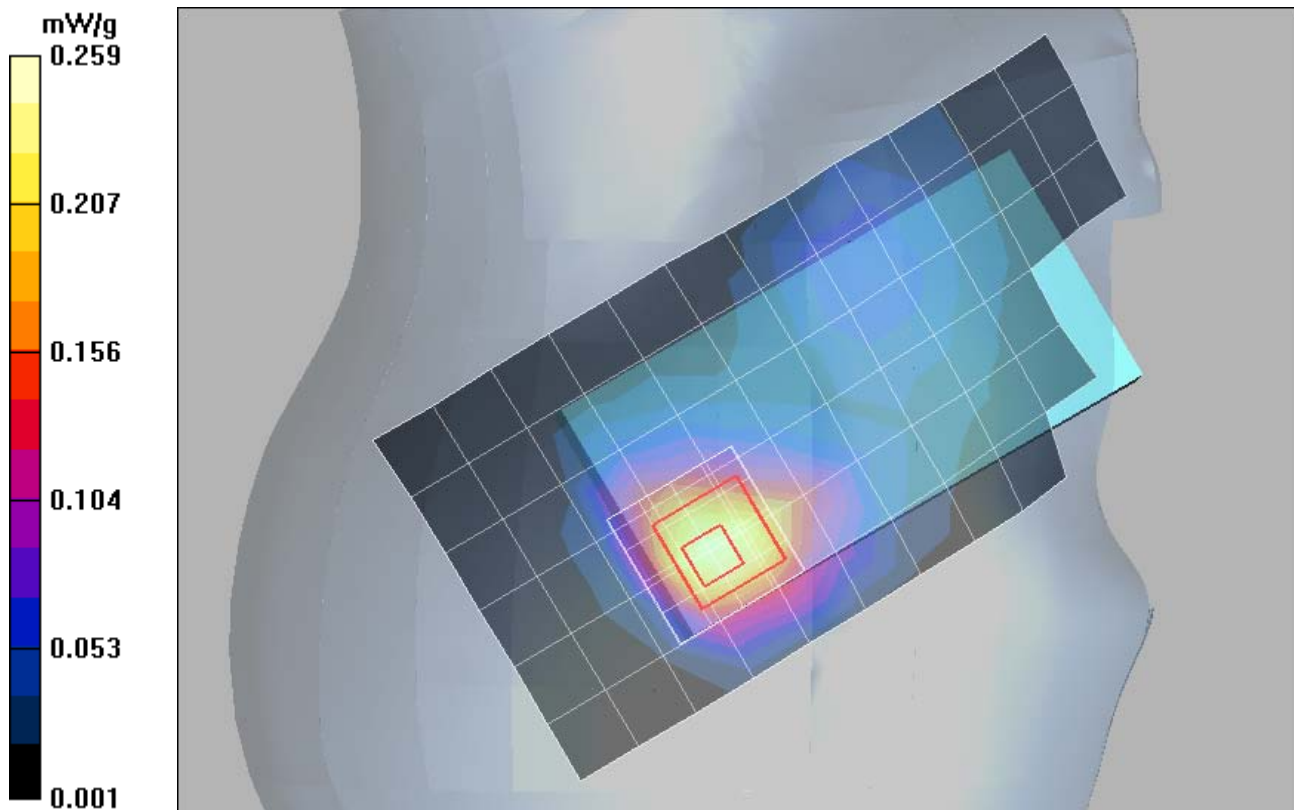
Measurement grid: dx=8mm, dy=8mm, dz=5mm

Reference Value = 12.8 V/m; Power Drift = -0.016 dB

Peak SAR (extrapolated) = 0.412 W/kg

SAR(1 g) = 0.245 mW/g; SAR(10 g) = 0.141 mW/g

Maximum value of SAR (measured) = 0.259 mW/g



Test Laboratory: Motorola WiFi 2450 Tilted

35669403005002;

Procedure Notes: Pwr Step: 17dBm(Test Mode) Antenna Position: Internal

Battery Model #: SNN5833A DEVICE POSITION (cheek or rotated): Rotated

Communication System: Wi-Fi 2450; Frequency: 2437 MHz; Channel Number: 6; Duty Cycle: 1:1

Medium: 2450 Glycol Head; Medium parameters used: $f = 2450$ MHz; $\sigma = 1.86$ mho/m; $\epsilon_r = 38.8$; $\rho = 1000$ kg/m³

DASY4 Configuration:

- Probe: ES3DV3 - SN3180; ConvF(4.44, 4.44, 4.44); Calibrated: 07/21/2009
- Sensor-Surface: 4mm (Mechanical Surface Detection)
- Electronics: DAE3 Sn398; Calibrated: 11/06/2008
- Phantom: PCS-10_ Glycol SAM (extended range), Rev.1 (25-Mar-05); Type: SAM v4.0; Serial: TP-1086;
- Measurement SW: DASY4, V4.7 Build 80; Postprocessing SW: SEMCAD, V1.8 Build 186

Left Head Template/Area Scan - Normal (15mm) (7x17x1): Measurement grid: dx=15mm, dy=15mm

Maximum value of SAR (measured) = 0.107 mW/g

Left Head Template/5x5x7 Zoom Scan (<=3GHz) (5x5x7)/Cube 0:

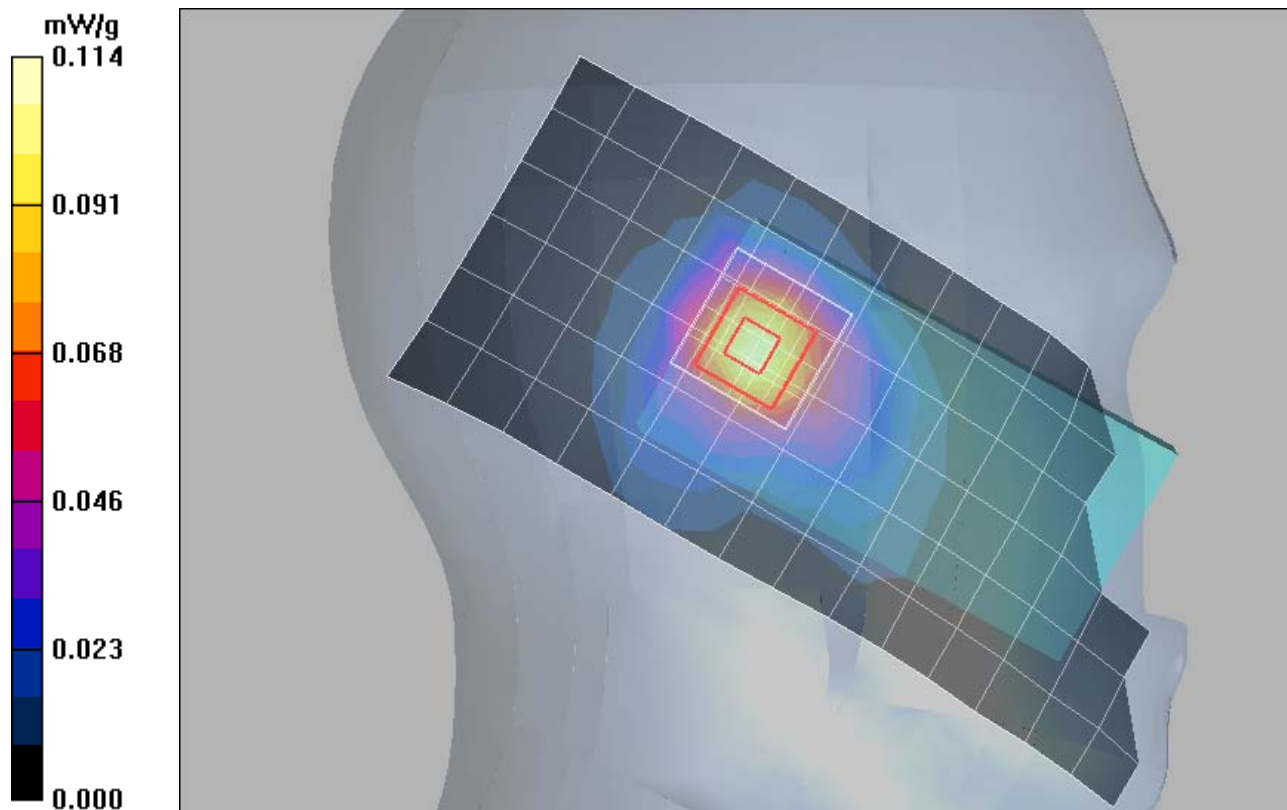
Measurement grid: dx=8mm, dy=8mm, dz=5mm

Reference Value = 7.20 V/m; Power Drift = 0.126 dB

Peak SAR (extrapolated) = 0.189 W/kg

SAR(1 g) = 0.105 mW/g; SAR(10 g) = 0.055 mW/g

Maximum value of SAR (measured) = 0.114 mW/g



Appendix 3

SAR distribution plots for Body Worn Configuration

Test Laboratory: Motorola GSM1900 BodyWorn

35669403005002;

Procedure Notes: Pwr Step: 00(OTA) Antenna Position: Internal

Battery Model #: SNN5833A Device Position: Back of phone 15mm away from Phantom

Communication System: GSM 1900; Frequency: 1880 MHz; Channel Number: 661; Duty Cycle: 1:8

Medium: Regular Glycol Body 1750/1880; Medium parameters used: $f = 1880$ MHz; $\sigma = 1.57$ mho/m; $\epsilon_r = 52.8$; $\rho = 1000$ kg/m³

DASY4 Configuration:

- Probe: ES3DV3 - SN3180; ConvF(4.64, 4.64, 4.64); Calibrated: 07/21/2009
- Sensor-Surface: 4mm (Mechanical Surface Detection)
- Electronics: DAE3 Sn398; Calibrated: 11/06/2008
- Phantom: PCS-10_ Section 2, Amy Twin, Rev2 (23-June-04); Type: Amy Twin Flat; Serial: n/a;
- Measurement SW: DASY4, V4.7 Build 80; Postprocessing SW: SEMCAD, V1.8 Build 186

Amy Twin Phone Template/Area Scan - Normal Body (15mm) (13x7x1):

Measurement grid: dx=15mm, dy=15mm

Maximum value of SAR (measured) = 0.357 mW/g

Amy Twin Phone Template/5x5x7 Zoom Scan (<=3GHz) (5x5x7)/Cube 0:

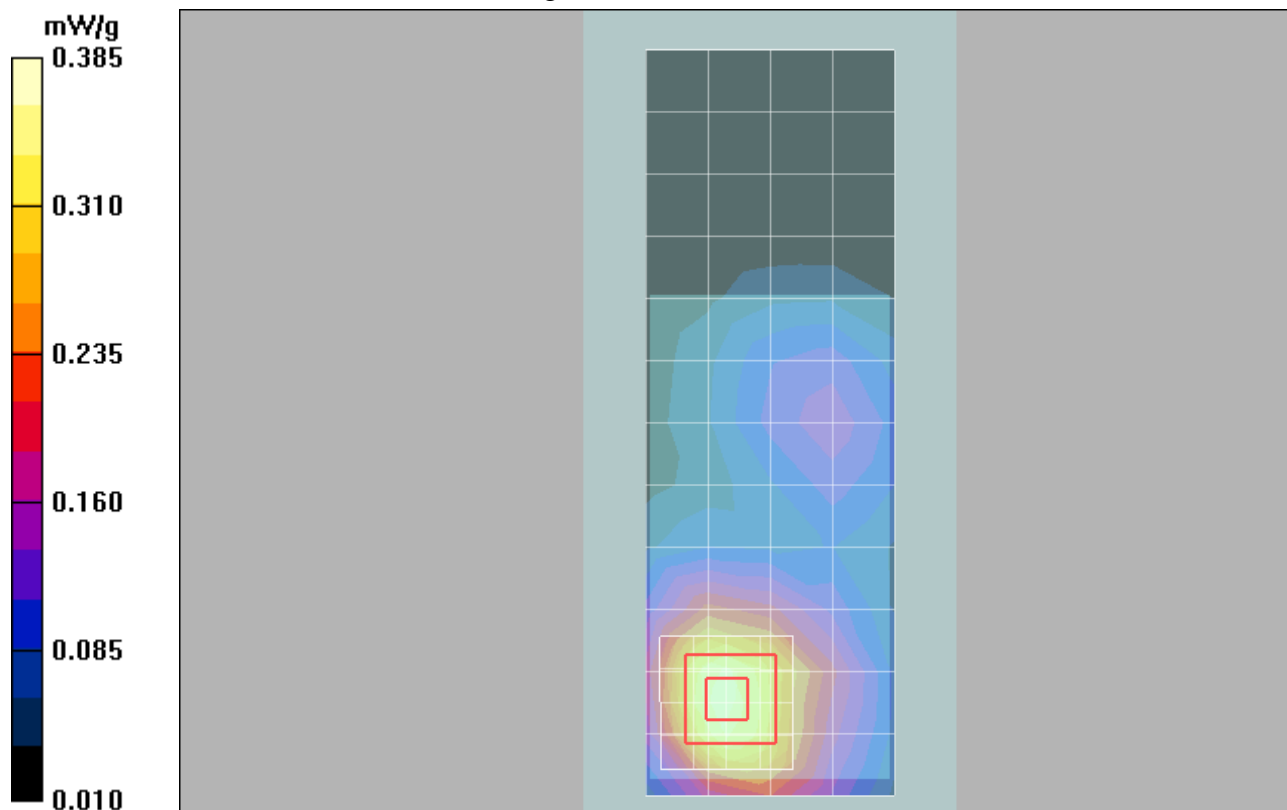
Measurement grid: dx=8mm, dy=8mm, dz=5mm

Reference Value = 14.2 V/m; Power Drift = -0.046 dB

Peak SAR (extrapolated) = 0.542 W/kg

SAR(1 g) = 0.354 mW/g; SAR(10 g) = 0.219 mW/g

Maximum value of SAR (measured) = 0.385 mW/g



Test Laboratory: Motorola WiFi 2450 BodyWorn**35669403005002;**

Procedure Notes: Pwr Step: 17dBm(Test Mode) Antenna Position: Internal

Battery Model #: SNN5833A Device Position: Back of phone 15mm away from Phantom

Communication System: Wi-Fi 2450; Frequency: 2437 MHz; Channel Number: 6; Duty Cycle: 1:1

Medium: 2450 Glycol Body; Medium parameters used: $f = 2450 \text{ MHz}$; $\sigma = 2.03 \text{ mho/m}$; $\epsilon_r = 49.2$; $\rho = 1000 \text{ kg/m}^3$

DASY4 Configuration:

- Probe: ES3DV3 - SN3180; ConvF(4.19, 4.19, 4.19); Calibrated: 07/21/2009
- Sensor-Surface: 4mm (Mechanical Surface Detection)
- Electronics: DAE3 Sn398; Calibrated: 11/06/2008
- Phantom: PCS-10_ Section 2, Amy Twin, Rev2 (23-June-04); Type: Amy Twin Flat; Serial: n/a;
- Measurement SW: DASY4, V4.7 Build 80; Postprocessing SW: SEMCAD, V1.8 Build 186

Amy Twin Phone Template/Area Scan - Normal Body (15mm) (13x7x1):

Measurement grid: dx=15mm, dy=15mm

Maximum value of SAR (measured) = 0.111 mW/g

Amy Twin Phone Template/5x5x7 Zoom Scan (<=3GHz) (5x5x7)/Cube 0:

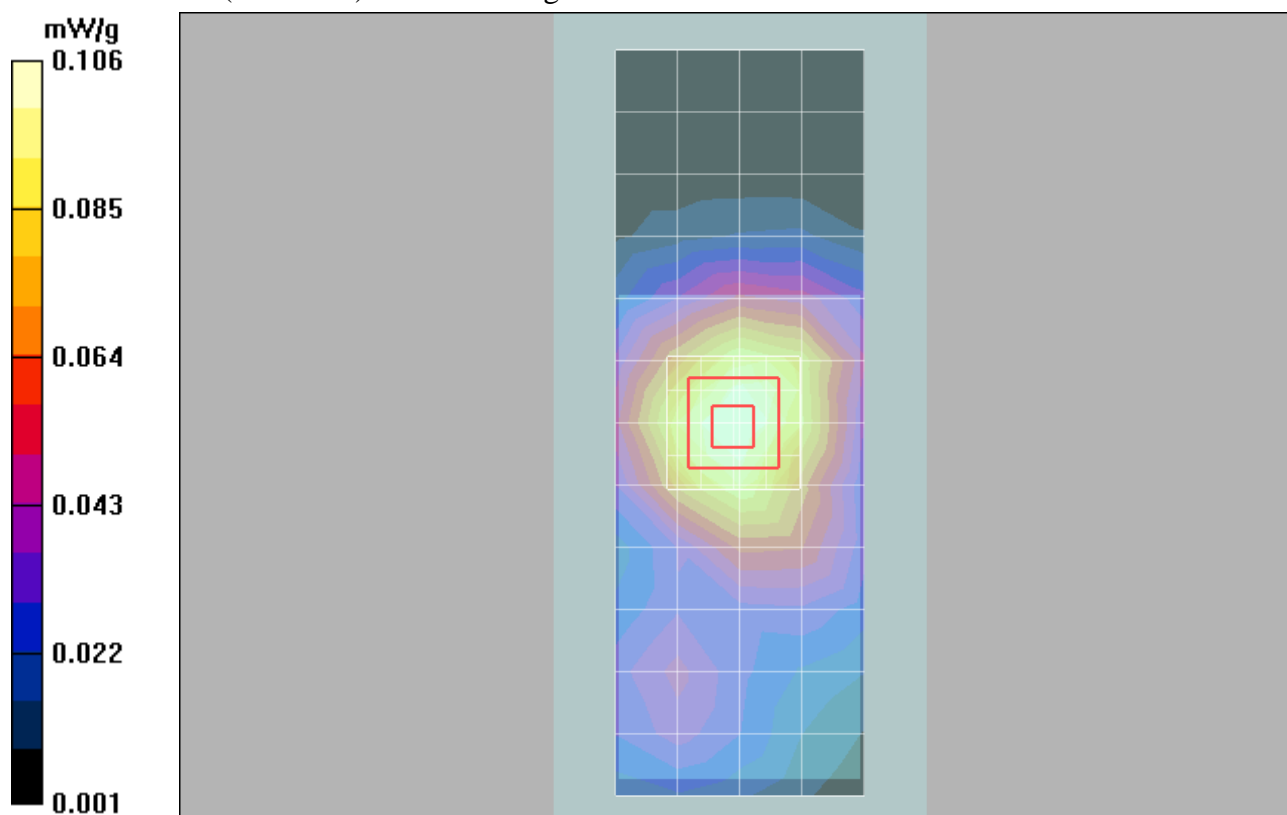
Measurement grid: dx=8mm, dy=8mm, dz=5mm

Reference Value = 7.25 V/m; Power Drift = 0.146 dB

Peak SAR (extrapolated) = 0.175 W/kg

SAR(1 g) = 0.099 mW/g; SAR(10 g) = 0.059 mW/g

Maximum value of SAR (measured) = 0.106 mW/g



Test Laboratory: Motorola BlueTooth 2450 BodyWorn

35669403005002;

Procedure Notes: Pwr Step: Test Mode Antenna Position: Internal

Battery Model #: SNN5837A Device Position: Front of phone 15mm away from phantom

Communication System: Bluetooth; Frequency: 2441 MHz; Channel Number: 39; Duty Cycle: 1:1

Medium: 2450 Glycol Body; Medium parameters used: $f = 2450 \text{ MHz}$; $\sigma = 2.04 \text{ mho/m}$; $\epsilon_r = 49$; $\rho = 1000 \text{ kg/m}^3$

DASY4 Configuration:

- Probe: ES3DV3 - SN3180; ConvF(4.19, 4.19, 4.19); Calibrated: 07/21/2009
- Sensor-Surface: 4mm (Mechanical Surface Detection)
- Electronics: DAE3 Sn398; Calibrated: 11/06/2008
- Phantom: PCS-10_ Section 2, Amy Twin, Rev2 (23-June-04); Type: Amy Twin Flat; Serial: n/a;
- Measurement SW: DASY4, V4.7 Build 80; Postprocessing SW: SEMCAD, V1.8 Build 186

Amy Twin Phone Template/Area Scan - Normal Body (15mm) (13x7x1):

Measurement grid: dx=15mm, dy=15mm

Maximum value of SAR (measured) = 0.003 mW/g

Amy Twin Phone Template/5x5x7 Zoom Scan (<=3GHz) (5x5x7)/Cube 0:

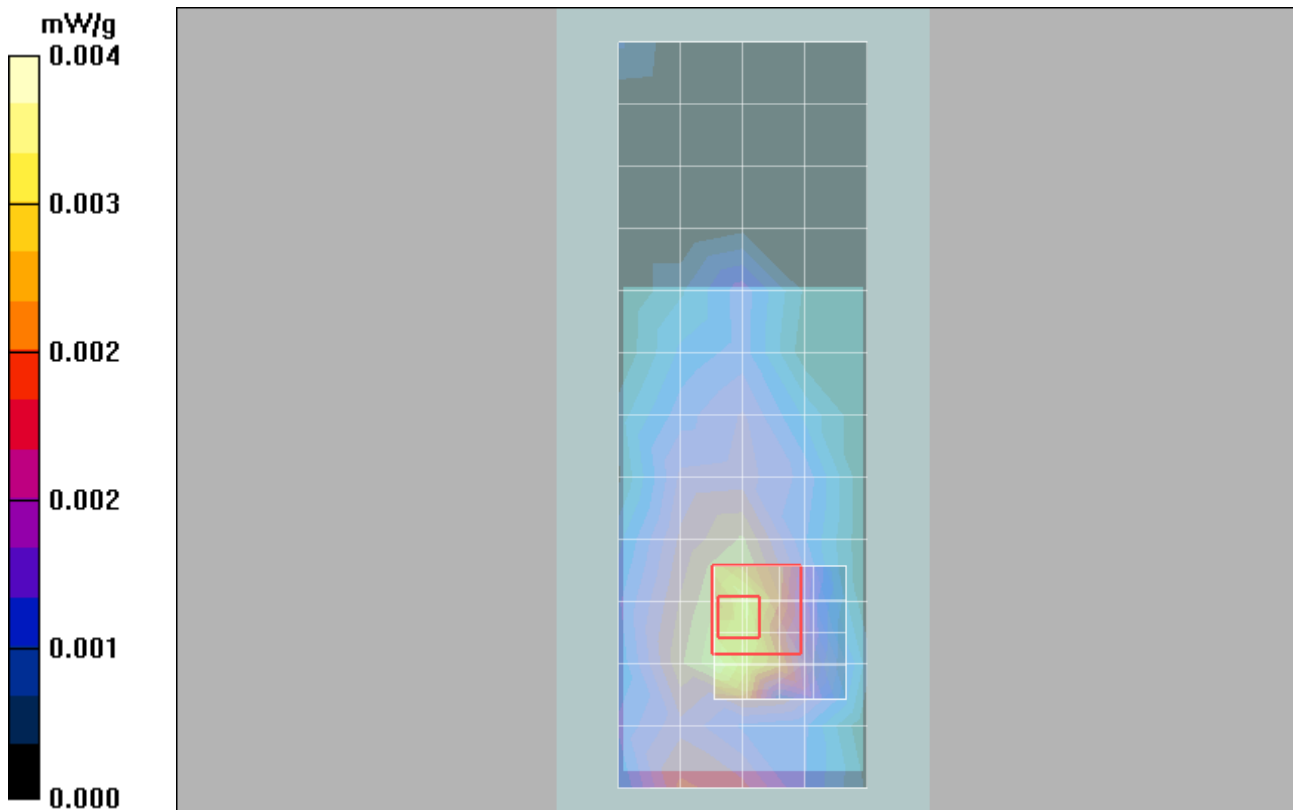
Measurement grid: dx=8mm, dy=8mm, dz=5mm

Reference Value = 1.28 V/m; Power Drift = 0.480 dB

Peak SAR (extrapolated) = 0.010 W/kg

SAR(1 g) = 0.00319 mW/g; SAR(10 g) = 0.00137 mW/g

Maximum value of SAR (measured) = 0.004 mW/g



Appendix 4
Probe Calibration Certificate



Accredited by the Swiss Accreditation Service (SAS)
The Swiss Accreditation Service is one of the signatories to the EA
Multilateral Agreement for the recognition of calibration certificates

Accreditation No.: **SCS 108**

Client **Motorola Korea**

Certificate No: **ES3-3180_Jul08**

CALIBRATION CERTIFICATE

Object **ES3DV3 - SN:3180**

Calibration procedure(s) **QA-CAL-01 v6 and QA-CAL-23 v3
Calibration procedure for dosimetric E-field probes**

Calibration date: **July 14, 2008**

Condition of the calibrated item **In Tolerance**

This calibration certificate documents the traceability to national standards, which realize the physical units of measurements (SI).
The measurements and the uncertainties with confidence probability are given on the following pages and are part of the certificate.

All calibrations have been conducted in the closed laboratory facility: environment temperature (22 ± 3)°C and humidity < 70%.

Calibration Equipment used (M&TE critical for calibration)

Primary Standards	ID #	Cal Date (Certificate No.)	Scheduled Calibration
Power meter E4419B	GB41293874	1-Apr-08 (No. 217-00788)	Apr-09
Power sensor E4412A	MY41495277	1-Apr-08 (No. 217-00788)	Apr-09
Power sensor E4412A	MY41498087	1-Apr-08 (No. 217-00788)	Apr-09
Reference 3 dB Attenuator	SN: S5054 (3c)	1-Jul-08 (No. 217-00865)	Jul-09
Reference 20 dB Attenuator	SN: S5086 (20b)	31-Mar-08 (No. 217-00787)	Apr-09
Reference 30 dB Attenuator	SN: S5129 (30b)	1-Jul-08 (No. 217-00866)	Jul-09
Reference Probe ES3DV2	SN: 3013	2-Jan-08 (No. ES3-3013_Jan08)	Jan-09
DAE4	SN: 660	3-Sep-07 (No. DAE4-660_Sep07)	Sep-08
Secondary Standards	ID #	Check Date (in house)	Scheduled Check
RF generator HP 8648C	US3642U01700	4-Aug-99 (in house check Oct-07)	In house check: Oct-09
Network Analyzer HP 8753E	US37390585	18-Oct-01 (in house check Oct-07)	In house check: Oct-08

Calibrated by: **Katja Pokovic** Technical Manager

Approved by: **Niels Kuster** Quality Manager

Signature

Issued: July 14, 2008

This calibration certificate shall not be reproduced except in full without written approval of the laboratory.



Accredited by the Swiss Accreditation Service (SAS)

The Swiss Accreditation Service is one of the signatories to the EA
Multilateral Agreement for the recognition of calibration certificates

Accreditation No.: **SCS 108**

Glossary:

TSL	tissue simulating liquid
NORM _{x,y,z}	sensitivity in free space
ConvF	sensitivity in TSL / NORM _{x,y,z}
DCP	diode compression point
Polarization φ	φ rotation around probe axis
Polarization ϑ	ϑ rotation around an axis that is in the plane normal to probe axis (at measurement center), i.e., $\vartheta = 0$ is normal to probe axis

Calibration is Performed According to the Following Standards:

- IEEE Std 1528-2003, "IEEE Recommended Practice for Determining the Peak Spatial-Averaged Specific Absorption Rate (SAR) in the Human Head from Wireless Communications Devices: Measurement Techniques", December 2003
- IEC 62209-1, "Procedure to measure the Specific Absorption Rate (SAR) for hand-held devices used in close proximity to the ear (frequency range of 300 MHz to 3 GHz)", February 2005

Methods Applied and Interpretation of Parameters:

- NORM_{x,y,z}**: Assessed for E-field polarization $\vartheta = 0$ ($f \leq 900$ MHz in TEM-cell; $f > 1800$ MHz: R22 waveguide). NORM_{x,y,z} are only intermediate values, i.e., the uncertainties of NORM_{x,y,z} does not effect the E²-field uncertainty inside TSL (see below *ConvF*).
- NORM(f)_{x,y,z} = NORM_{x,y,z} * frequency_response** (see Frequency Response Chart). This linearization is implemented in DASY4 software versions later than 4.2. The uncertainty of the frequency response is included in the stated uncertainty of *ConvF*.
- DCP_{x,y,z}**: DCP are numerical linearization parameters assessed based on the data of power sweep (no uncertainty required). DCP does not depend on frequency nor media.
- ConvF and Boundary Effect Parameters**: Assessed in flat phantom using E-field (or Temperature Transfer Standard for $f \leq 800$ MHz) and inside waveguide using analytical field distributions based on power measurements for $f > 800$ MHz. The same setups are used for assessment of the parameters applied for boundary compensation (alpha, depth) of which typical uncertainty values are given. These parameters are used in DASY4 software to improve probe accuracy close to the boundary. The sensitivity in TSL corresponds to NORM_{x,y,z} * ConvF whereby the uncertainty corresponds to that given for ConvF. A frequency dependent ConvF is used in DASY version 4.4 and higher which allows extending the validity from ± 50 MHz to ± 100 MHz.
- Spherical isotropy (3D deviation from isotropy)**: in a field of low gradients realized using a flat phantom exposed by a patch antenna.
- Sensor Offset**: The sensor offset corresponds to the offset of virtual measurement center from the probe tip (on probe axis). No tolerance required.

Probe ES3DV3

SN:3180

Manufactured:	March 25, 2008
Calibrated:	July 14, 2008

Calibrated for DASY Systems

(Note: non-compatible with DASY2 system!)

DASY - Parameters of Probe: ES3DV3 SN:3180

Sensitivity in Free Space^A

NormX	1.18 ± 10.1%	$\mu\text{V}/(\text{V}/\text{m})^2$
NormY	1.03 ± 10.1%	$\mu\text{V}/(\text{V}/\text{m})^2$
NormZ	1.01 ± 10.1%	$\mu\text{V}/(\text{V}/\text{m})^2$

Diode Compression^B

DCP X	95 mV
DCP Y	93 mV
DCP Z	94 mV

Sensitivity in Tissue Simulating Liquid (Conversion Factors)

Please see Page 8.

Boundary Effect

TSL **900 MHz** **Typical SAR gradient: 5 % per mm**

Sensor Center to Phantom Surface Distance		3.0 mm	4.0 mm
SAR _{be} [%]	Without Correction Algorithm	9.4	5.8
SAR _{be} [%]	With Correction Algorithm	0.6	0.3

TSL **1810 MHz** **Typical SAR gradient: 10 % per mm**

Sensor Center to Phantom Surface Distance		3.0 mm	4.0 mm
SAR _{be} [%]	Without Correction Algorithm	9.1	5.3
SAR _{be} [%]	With Correction Algorithm	0.5	0.3

Sensor Offset

Probe Tip to Sensor Center **2.0 mm**

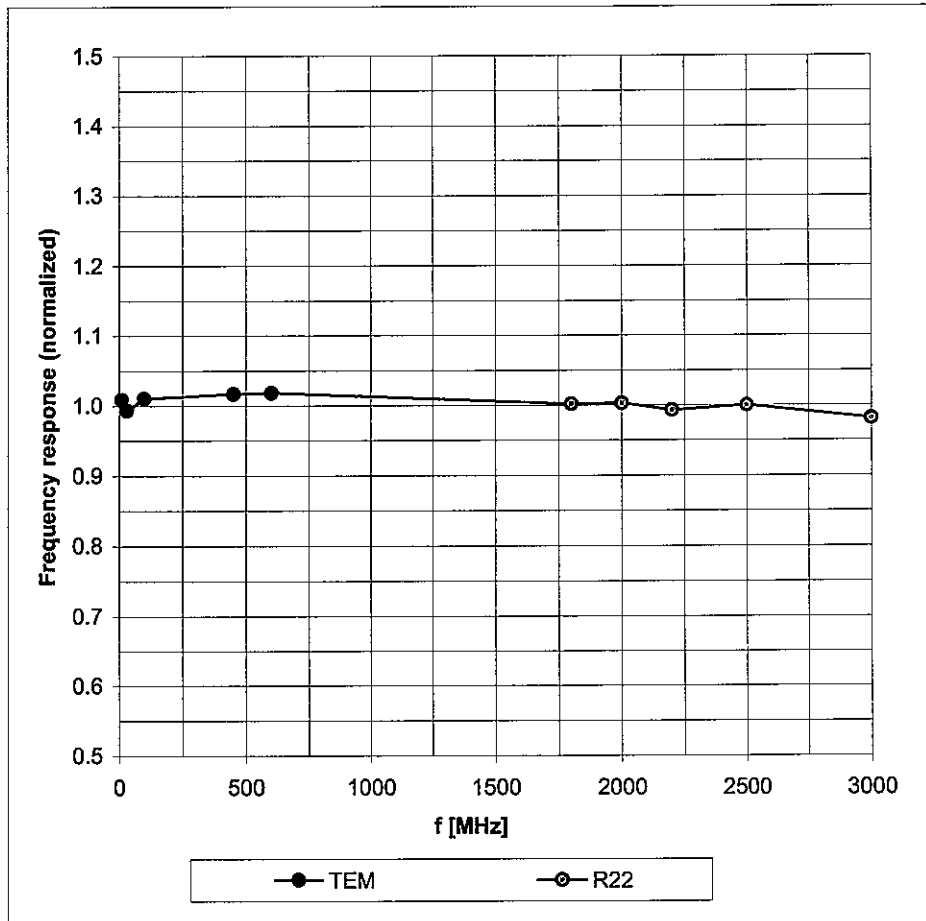
The reported uncertainty of measurement is stated as the standard uncertainty of measurement multiplied by the coverage factor k=2, which for a normal distribution corresponds to a coverage probability of approximately 95%.

^A The uncertainties of NormX,Y,Z do not affect the E²-field uncertainty inside TSL (see Page 8).

^B Numerical linearization parameter: uncertainty not required.

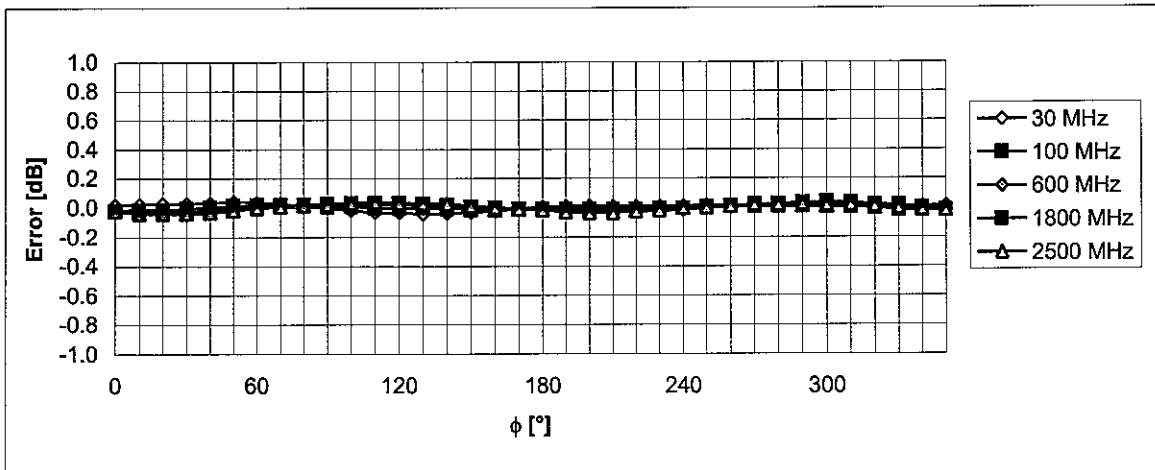
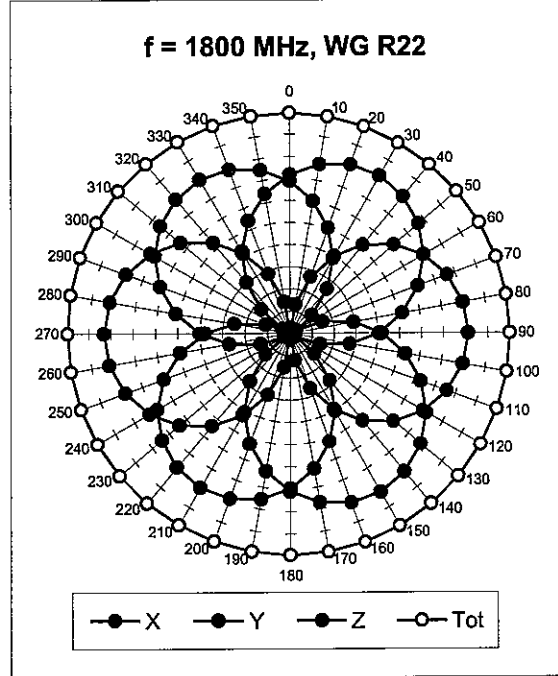
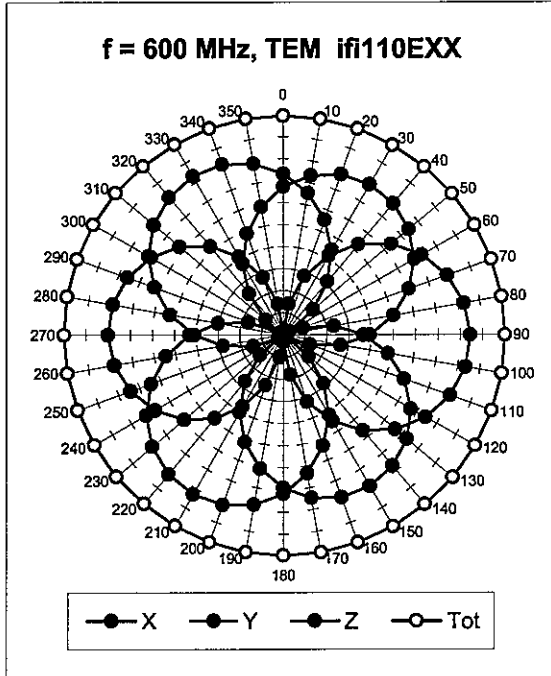
Frequency Response of E-Field

(TEM-Cell:ifi110 EXX, Waveguide: R22)



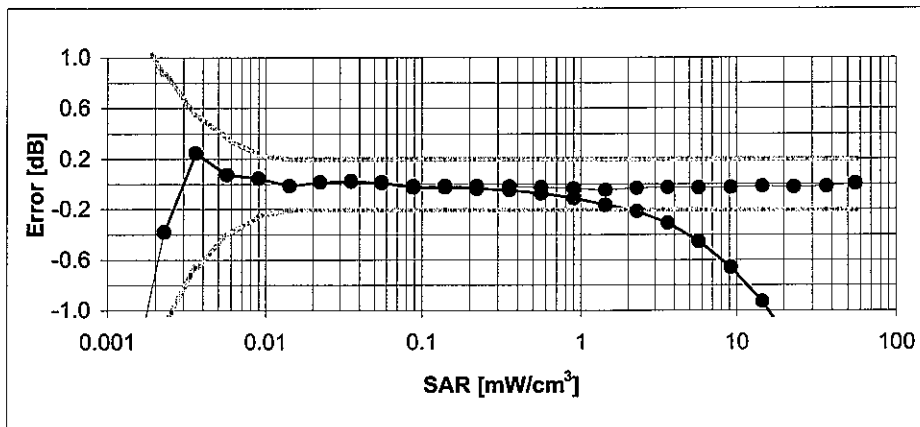
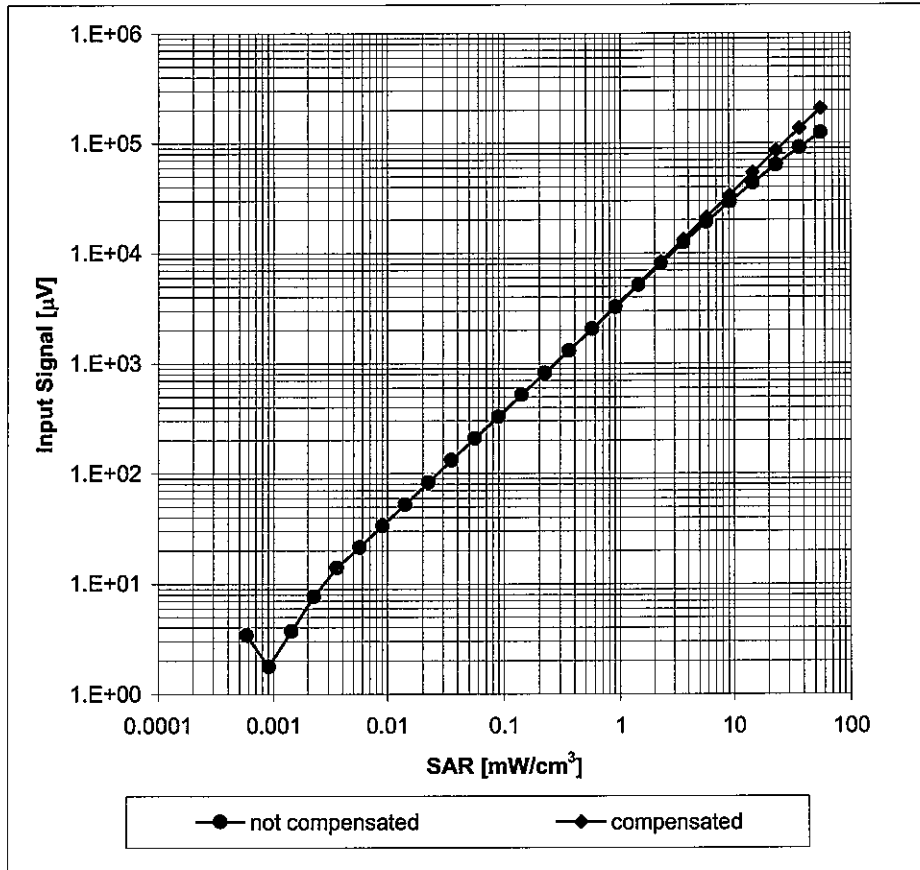
Uncertainty of Frequency Response of E-field: $\pm 6.3\%$ ($k=2$)

Receiving Pattern (ϕ), $\vartheta = 0^\circ$



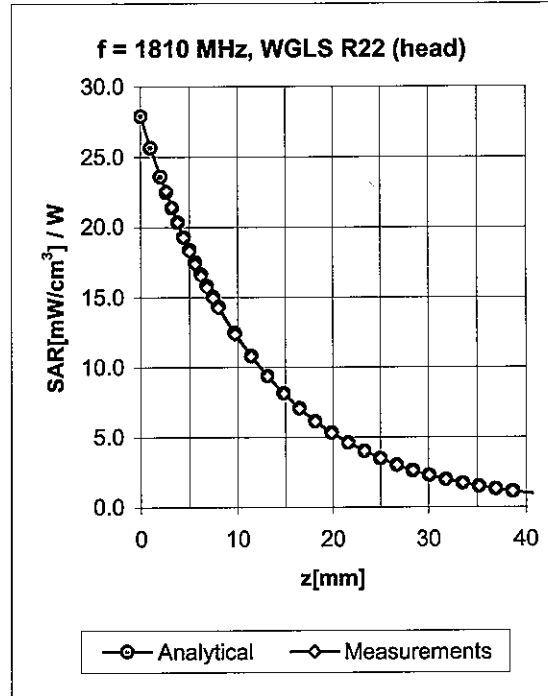
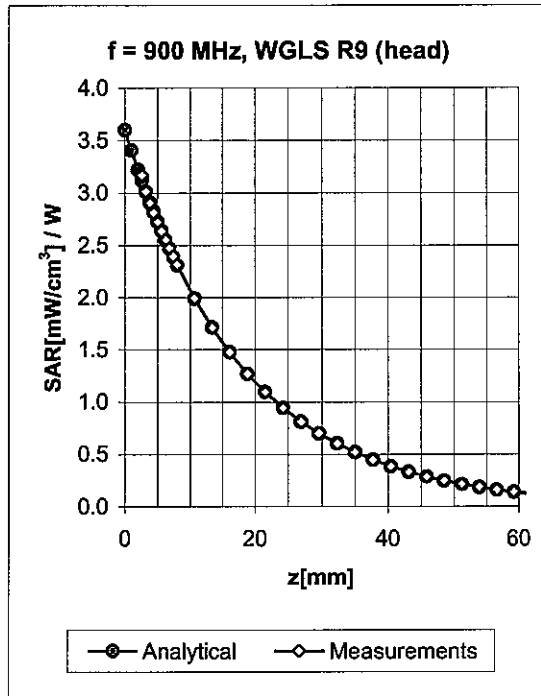
Uncertainty of Axial Isotropy Assessment: $\pm 0.5\%$ ($k=2$)

Dynamic Range $f(\text{SAR}_{\text{head}})$ (Waveguide R22, $f = 1800 \text{ MHz}$)



Uncertainty of Linearity Assessment: $\pm 0.6\%$ ($k=2$)

Conversion Factor Assessment

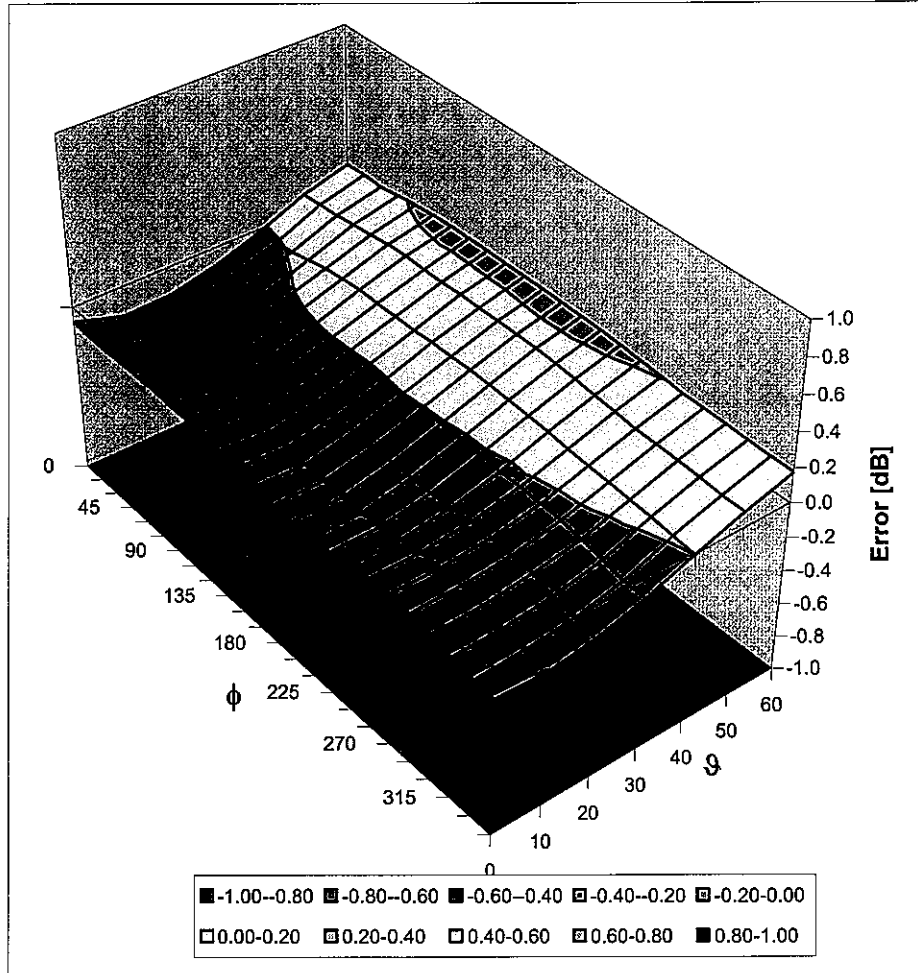


f [MHz]	Validity [MHz] ^c	TSL	Permittivity	Conductivity	Alpha	Depth	ConvF Uncertainty
900	± 50 / ± 100	Head	41.5 ± 5%	0.97 ± 5%	0.21	2.35	5.91 ± 11.0% (k=2)
1810	± 50 / ± 100	Head	40.0 ± 5%	1.40 ± 5%	0.40	1.64	5.15 ± 11.0% (k=2)
1950	± 50 / ± 100	Head	40.0 ± 5%	1.40 ± 5%	0.78	1.17	4.89 ± 11.0% (k=2)
2450	± 50 / ± 100	Head	39.2 ± 5%	1.80 ± 5%	0.70	1.25	4.47 ± 11.0% (k=2)
900	± 50 / ± 100	Body	55.0 ± 5%	1.05 ± 5%	0.37	1.69	5.93 ± 11.0% (k=2)
1810	± 50 / ± 100	Body	53.3 ± 5%	1.52 ± 5%	0.35	1.92	4.76 ± 11.0% (k=2)
1950	± 50 / ± 100	Body	53.3 ± 5%	1.52 ± 5%	0.63	1.37	4.67 ± 11.0% (k=2)
2450	± 50 / ± 100	Body	52.7 ± 5%	1.95 ± 5%	0.75	1.25	4.15 ± 11.0% (k=2)

^c The validity of ± 100 MHz only applies for DASY v4.4 and higher (see Page 2). The uncertainty is the RSS of the ConvF uncertainty at calibration frequency and the uncertainty for the indicated frequency band.

Deviation from Isotropy in HSL

Error (ϕ, ϑ), $f = 900$ MHz



Uncertainty of Spherical Isotropy Assessment: $\pm 2.6\%$ ($k=2$)

Appendix 5
Measurement Uncertainty Budget

MOTOROLA, INC. Portable Cellular Phone SAR Test Report Number: **23287-1F**

<i>a</i>	<i>b</i>	<i>c</i>	<i>d</i>	$e = f(d,k)$	<i>f</i>	<i>g</i>	$h = c \times f / e$	$i = c \times g / e$	<i>k</i>
Uncertainty Component	IEEE 1528 section	Tol. (\pm %)	Prob Dist	Div.	c_i (1 g)	c_i (10 g)	1 g u_i (\pm %)	10 g u_i (\pm %)	v_i
Measurement System									
Probe Calibration	E.2.1	5.9	N	1.00	1	1	5.9	5.9	∞
Axial Isotropy	E.2.2	4.7	R	1.73	0.707	0.707	1.9	1.9	∞
Hemispherical Isotropy	E.2.2	9.6	R	1.73	0.707	0.707	3.9	3.9	∞
Boundary Effect	E.2.3	1.0	R	1.73	1	1	0.6	0.6	∞
Linearity	E.2.4	4.7	R	1.73	1	1	2.7	2.7	∞
System Detection Limits	E.2.5	1.0	R	1.73	1	1	0.6	0.6	∞
Readout Electronics	E.2.6	0.3	N	1.00	1	1	0.3	0.3	∞
Response Time	E.2.7	1.1	R	1.73	1	1	0.6	0.6	∞
Integration Time	E.2.8	1.1	R	1.73	1	1	0.6	0.6	∞
RF Ambient Conditions - Noise	E.6.1	3.0	R	1.73	1	1	1.7	1.7	∞
RF Ambient Conditions - Reflections	E.6.1	0.0	R	1.73	1	1	0.0	0.0	∞
Probe Positioner Mech. Tolerance	E.6.2	0.4	R	1.73	1	1	0.2	0.2	∞
Probe Positioning w.r.t Phantom	E.6.3	1.4	R	1.73	1	1	0.8	0.8	∞
Max. SAR Evaluation (ext., int., avg.)	E.5	3.4	R	1.73	1	1	2.0	2.0	∞
Test sample Related									
Test Sample Positioning	E.4.2	3.2	N	1.00	1	1	3.2	3.2	29
Device Holder Uncertainty	E.4.1	4.0	N	1.00	1	1	4.0	4.0	8
SAR drift	6.6.2	5.0	R	1.73	1	1	2.9	2.9	∞
Phantom and Tissue Parameters									
Phantom Uncertainty	E.3.1	4.0	R	1.73	1	1	2.3	2.3	∞
Liquid Conductivity (target)	E.3.2	5.0	R	1.73	0.64	0.43	1.8	1.2	∞
Liquid Conductivity (measurement)	E.3.3	3.3	N	1.00	0.64	0.43	2.1	1.4	∞
Liquid Permittivity (target)	E.3.2	5.0	R	1.73	0.6	0.49	1.7	1.4	∞
Liquid Permittivity (measurement)	E.3.3	1.9	N	1.00	0.6	0.49	1.1	0.9	∞
Combined Standard Uncertainty			RSS				11.1	10.8	411
Expanded Uncertainty (95% CONFIDENCE LEVEL)			$k=2$				22.2	21.6	

Appendix 6

Dipole Characterization Certificate

Certification of System Performance Check Targets

FCD-1806, rev-1

-Historical Data-

1800 MHz	
Reference Target:	38.4 (W/kg)
Measurement Uncertainty (k=1):	9.0%
Measurement Period:	15April08 - 26March09
# of tests performed:	929
Grand Average:	37.91 (W/kg)
% Delta (Average - Reference Target)	-1.3%
Is % Delta <= Expanded Measurement Uncertainty (k=2)?	Yes
Accept/Reject <u>Average</u> as new system performance check target?	ACCEPT
<u>Applies to Dipole SN's:</u> 246tr, 250tr, 251tr, 259tr, 263tr, 271tr, 272tr, 276tr, 277tr, 279tr, 280tr, 281tr, 283tr, 284tr, 2d128, 2d129	

-New System Performance Check Targets- per WI-0396

(based on analysis of historical data)

Frequency	SAR Target (W/kg)	Permittivity Target +/- %	Conductivity (S/m) Target +/- %
1800 MHz	37.91	40.0 +/- 5%	1.40 +/- 5%


-Approvals-

Submitted by: Date:

Signed: 

Comments:

Approved by: Date:

Signed: 

Comments:

Certification of System Performance Check Targets

FCD-1806, rev-1

-Historical Data-

2450 MHz	
Reference Target:	52.4 (W/kg)
Measurement Uncertainty (k=1):	9.0%
Measurement Period:	15April08 - 26March09
# of tests performed:	150
Grand Average:	56.68 (W/kg)
% Delta (Average - Reference Target)	8.2%
Is % Delta <= Expanded Measurement Uncertainty (k=2)?	Yes
Accept/Reject <u>Average</u> as new system performance check target?	ACCEPT
Applies to Dipole SN's:	
740, 766, 767, 788, 789	

-New System Performance Check Targets- per WI-0396

(based on analysis of historical data)

Frequency	SAR Target (W/kg)	Permittivity Target +/- %	Conductivity (S/m) Target +/- %
2450 MHz	56.68	39.2 +/- 10%	1.80 +/- 5%

-Approvals-

Submitted by: Date:

Signed: 

Comments:

Approved by: Date:

Signed: 

Comments:

END OF REPORT