



MOTOROLA



TESTING CERT # 2518.01

Exhibit 7B: SAR Test Report Photographs

Enterprise Mobility Solutions
EME Test Laboratory
8000 West Sunrise Blvd
Fort Lauderdale, FL. 33322



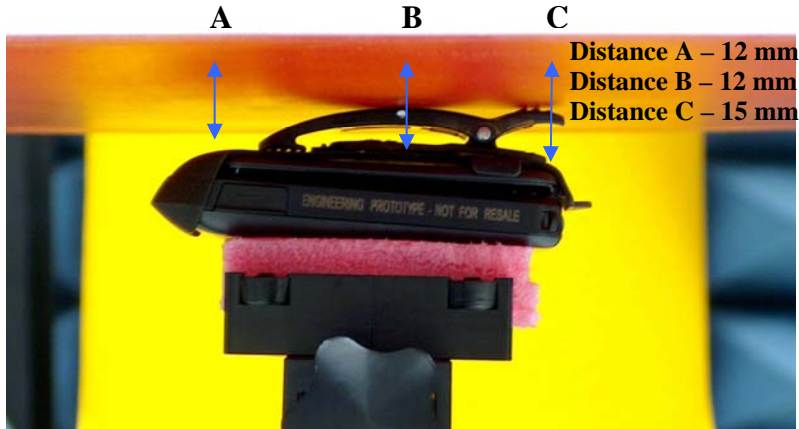
Signature on File
Deanna Zakharia
EMS EME Lab Senior Resource Manager, Laboratory Director

Approval Date: 8/20/09

1.0 Highest SAR Test Position per body location

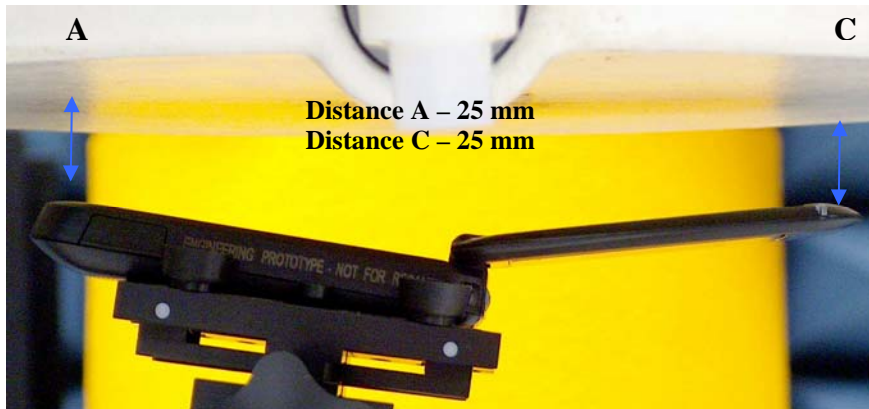
1.1 Body

DUT with offered carry holster NNTN7840A using offered battery SNN5782D against the phantom.
Same position used with the offered audio/data cables NNTN5330B, NNTN5211B, NNTN6312A attached.



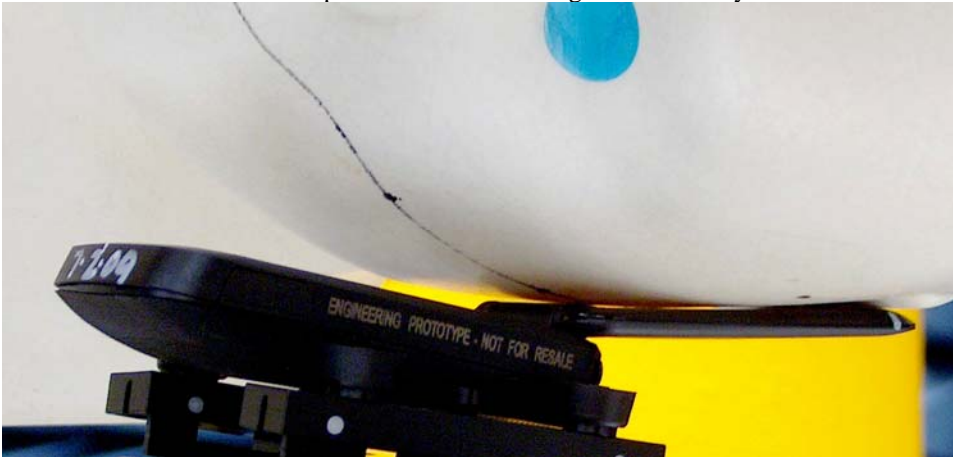
1.2 Face – flip opened at 2.5cm separation

DUT with flip opened and separated 2.5cm from phantom using offered battery SNN5782D.



1.3 Head

DUT in cheek touch position at left ear using offered battery SNN5782D.

**1.4 Hand**

Not applicable.

2.0 Other SAR tested positions at the body**2.1 Body worn**

See section 1.1

2.2 Front Side against phantom

Not applicable.

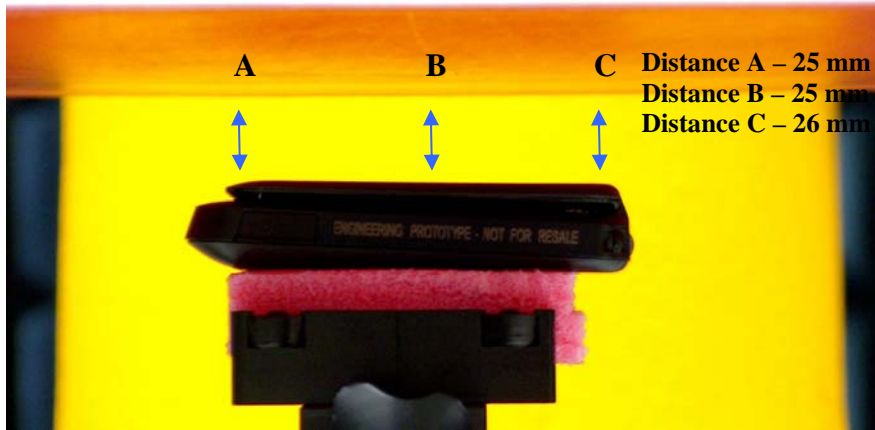
2.3 Back side against phantom

Not applicable.

2.4 Front 2.5cm separation

DUT with front side separated 2.5cm from phantom using offered battery SNN5782D.

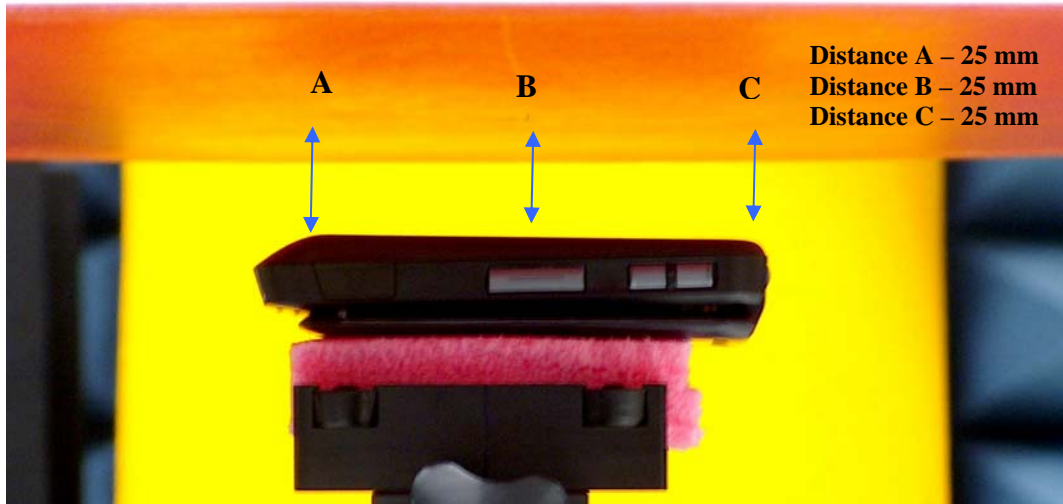
Same position used with offered audio/data cable SKN6238A, NNTN5330B, NNTN5211B, NNTN6312A.



2.5 Back 2.5cm separation

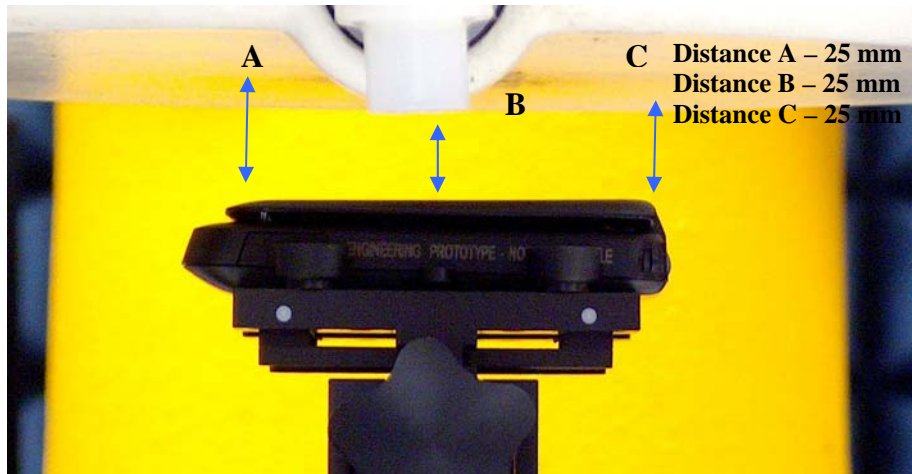
DUT with back side separated 2.5cm from phantom using offered battery SNN5782D.

Same position used with offered audio/data cable NNTN5330B.

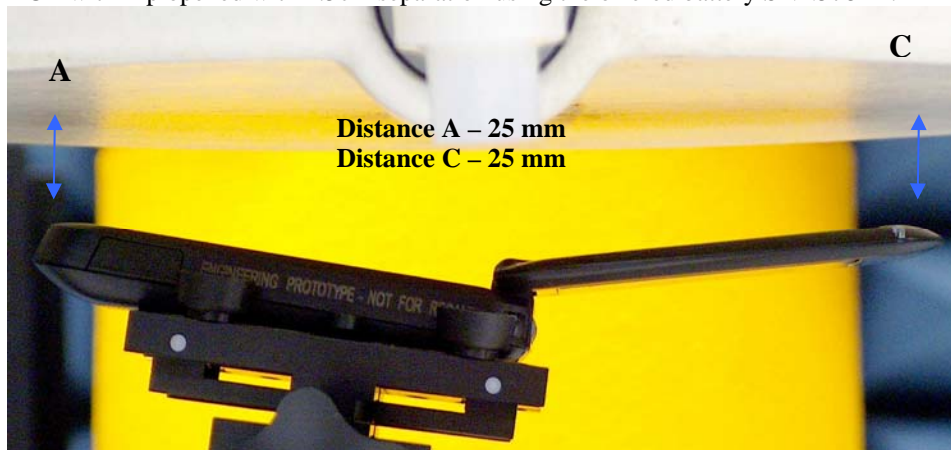


3.0 Other SAR tested position at the face

3.1 DUT with flip closed with 2.5cm separation using the offered battery SNN5782D.



3.2 DUT with flip opened with 2.5cm separation using the offered battery SNN5782D.



4.0 Other SAR tested positions at the head

4.1 Left ear touch
See section 1.3

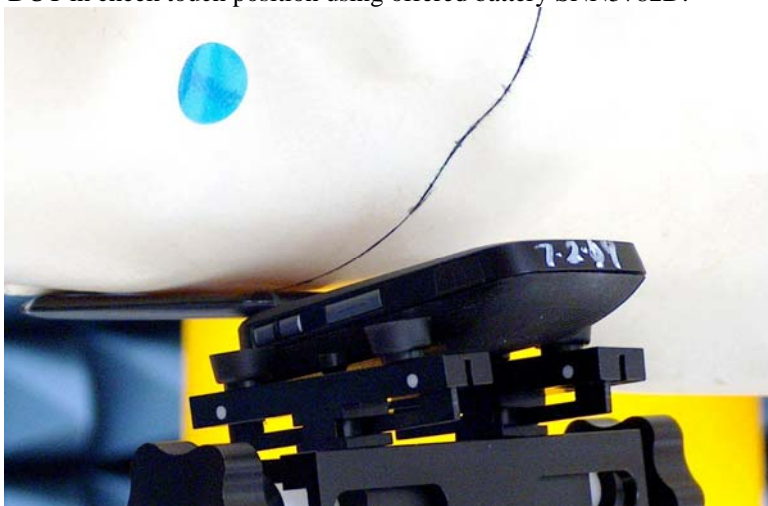
4.2 Left ear tilt

DUT in 15° tilt position using offered battery SNN5782D.



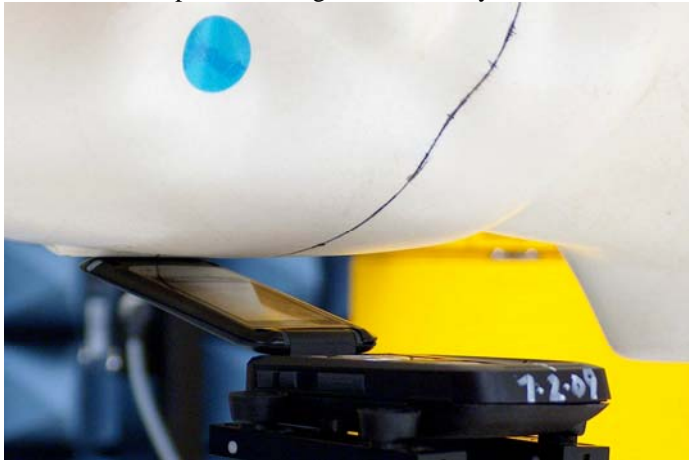
4.3 Right ear touch

DUT in cheek touch position using offered battery SNN5782D.



4.4 Right ear tilt

DUT in 15° tilt position using offered battery SNN5782D.

**5.0 Other SAR tested positions at the hand****5.1 Left side**

Not applicable.

5.2 Right side

Not applicable.

5.3 Top side

Not applicable.

5.4 Bottom side

Not applicable.

5.5 Back side

Not applicable.

6.0 DUT and Accessory Photos

The purpose of these photos is to illustrate the offered body-worn carry accessory. The sample that was used in the following photos represents the product used to obtain the results presented herein.

6.1 Tested body worn photos



**DUT Side View
Carry Holster NNTN7840A**



**DUT Front View
Carry Holster NNTN7840A**

7.0 Simultaneous Transmission Considerations – Pursuant to FCC KDB 648474 Practice

7.1 Operating modes

Device Operating Mode	Remarks
iDEN SMR	No simultaneous Tx with MOTotalk.
MOTotalk	No simultaneous Tx with iDEN.

Note: The iDEN, MOTotalk and GPS services share the same antenna, and cannot operate simultaneously

7.2 Simultaneous Transmission Device Tabulation

Not applicable