



**MOTOROLA**

**Portable Cellular Phone SAR Test Report**

**Tests Requested By:** Motorola Mobile Devices  
600 N. US Highway 45  
Libertyville, IL 60048

**Test Report #:** 23155-2F  
**Date of Report:** Jul-08-2009  
**Date of Test:** Jun-30-2009 to Jul-03-2009  
**FCC ID #:** IHDP56KB1  
**Generic Name:** N/A

**Test Laboratory:** Motorola Mobile Devices Business Product Safety & Compliance Laboratory  
600 N. US Highway 45  
Libertyville, IL 60048

**Report Author:** Thomas Knipple  
Senior RF Engineer 

This laboratory is accredited to ISO/IEC 17025-2005 to perform the following tests:

<b>Accreditation:</b>	<u>Tests:</u>	<u>Procedures:</u>
	Electromagnetic Specific Absorption Rate	IEC 62209-1 RSS-102 IEEE 1528 - 2003 FCC OET Bulletin 65 (including Supplement C) Australian Communications Authority Radio Communications (Electromagnetic Radiation – Human Exposure) Standard 2003 CENELEC EN 50360 ARIB Std. T-56 (2002)



TESTING CERT #2518-02

On the following products or types of products:  
Wireless Communications Devices (Examples): Two Way Radios; Portable Phones (including Cellular, Licensed Non-Broadcast and PCS); Low Frequency Readers; and Pagers

**Statement of Compliance:** Motorola declares under its sole responsibility that the portable cellular telephone model to which this declaration relates, is in conformity with the appropriate General Population/Uncontrolled RF exposure standards, recommendations and guidelines (FCC 47 CFR §2.1093) as well as with CENELEC en50360:2001 and ANSI / IEEE C95.1. It also declares that the product was tested in accordance with IEEE 1528 / CENELEC EN62209-1 (2006), as well as other appropriate measurement standards, guidelines and recommended practices. Any deviations from these standards, guidelines and recommended practices are noted below:

(none)

©Motorola, Inc. 2009

This test report shall not be reproduced except in full, without written approval of the laboratory. The results and statements contained herein relate only to the items tested. The names of individuals involved may be mentioned only in connection with the statements or results from this report. Motorola encourages all feedback, both positive and negative, on this test report.

## Table of Contents

<b>1. Introduction</b>	<b>3</b>
<b>2. Description of the Device Under Test</b>	<b>4</b>
2.1 Antenna description	4
2.2 Device description	4
<b>3. Test Equipment Used</b>	<b>5</b>
3.1 Dosimetric System	5
3.2 Additional Equipment	5
<b>4. Electrical parameters of the tissue simulating liquid</b>	<b>6</b>
<b>5. System Accuracy Verification</b>	<b>7</b>
<b>6. Test Results</b>	<b>8</b>
6.1 Head Adjacent Test Results	9
6.2 Body Worn Test Results	12
<b>References</b>	<b>15</b>
<b>Appendix 1: SAR distribution comparison for the system accuracy verification</b>	
<b>Appendix 2: SAR distribution plots for Phantom Head Adjacent Use</b>	
<b>Appendix 3: SAR distribution plots for Body Worn Configuration</b>	
<b>Appendix 4: Probe Calibration Certificate</b>	
<b>Appendix 5: Measurement Uncertainty Budget</b>	
<b>Appendix 6: Dipole Characterization Certificate</b>	

## **1. Introduction**

The Motorola Mobile Devices Business Product Safety Laboratory has performed measurements of the maximum potential exposure to the user of the portable cellular phone covered by this test report. The Specific Absorption Rate (SAR) of this product was measured. The portable cellular phone was tested in accordance with [1], [4] and [5]. The SAR values measured for the portable cellular phone are below the maximum recommended levels of 1.6 W/kg in a 1 g average set in [3] and 2.0 W/kg in a 10 g average set in [2].

For ICNIRP (10 g), the final SAR reading for this phone is 1.10 W/kg for head-adjacent use and 0.97 W/kg for body-worn use. For ANSI / IEEE C95.1 (1 g), the final SAR reading for this phone is 1.53 W/kg for head-adjacent use and 1.43 W/kg for body-worn use. These measurements were performed using a Dasy4™ v4.7 system manufactured by Schmid & Partner Engineering AG (SPEAG), of Zurich Switzerland.

**2. Description of the Device Under Test**

**2.1 Antenna description**

<b>Type</b>	Internal	
<b>Location</b>	Bottom rear of phone	
<b>Dimensions</b>	Length	65.0 mm
	Width	2.0 mm
<b>Configuration</b>	PIFA	

**2.2 Device description**

<b>Serial number</b>	<b>2CA2532</b>				
<b>Mode(s) of Operation</b>	800 CDMA	1900 CDMA	800 EV-DO Rel. O	1900 EV-DO Rel. O	Bluetooth
<b>Modulation Mode(s)</b>	QPSK	QPSK	QPSK	QPSK	GMSK
<b>Maximum Output Power Setting</b>	25.00 dBm	25.00 dBm	25.00 dBm	25.00 dBm	10.00 dBm
<b>Duty Cycle</b>	1:1	1:1	1:1	1:1	1:1
<b>Transmitting Frequency Range(s)</b>	824.70 – 848.31 MHz	1851.25 – 1908.75 MHz	824.70 – 848.31 MHz	1851.25 – 1908.75 MHz	2400.0 - 2483.5 MHz
<b>Production Unit or Identical Prototype (47 CFR §2.908)</b>	Identical Prototype				
<b>Device Category</b>	Portable				
<b>RF Exposure Limits</b>	General Population / Uncontrolled				

### 3. Test Equipment Used

#### 3.1 Dosimetric System

The Motorola Mobile Devices Business Product Safety & Compliance Laboratory utilizes a Dosimetric Assessment System (Dasy4™ v4.7) manufactured by Schmid & Partner Engineering AG (SPEAG™), of Zurich Switzerland. All the SAR measurements are taken within a shielded enclosure. The overall 10 g RSS uncertainty of the measurement system is  $\pm 10.8\%$  (K=1) with an expanded uncertainty of  $\pm 21.6\%$  (K=2). The overall 1 g RSS uncertainty of the measurement system is  $\pm 11.1\%$  (K=1) with an expanded uncertainty of  $\pm 22.2\%$  (K=2). The measurement uncertainty budget is given in Appendix 5. Per IEEE 1528, this uncertainty budget is applicable to the SAR range of 0.4 W/kg to 10 W/kg.

The list of calibrated equipment used for the measurements is shown in the following table.

Description	Serial Number	Cal Due Date
DASY4™ DAE V1	387	Apr-01-2010
E-Field Probe ET3DV6	1524	Feb-12-2010
S.A.M. Phantom used for 800/900 MHz	TP-1005	
S.A.M. Phantom used for 1800/1900/2450 MHz	TP-1139	
Dipole Validation Kit, DV900V2	78	Apr-01-2010
Dipole Validation Kit, DV1800V2	259TR	Apr-01-2010
Dipole Validation Kit, DV2450V2	740	Apr-01-2010

#### 3.2 Additional Equipment

Description	Serial Number	Cal Due Date
Signal Generator HP8648C	3847A04822	Apr-22-2010
Power Meter E4419B	GB39510961	Jan-24-2010
Power Sensor #1 - E9301A	US39210917	Jun-04-2010
Power Sensor #2 - E9301A	US39210918	Jun-04-2010
Network Analyzer HP8753ES	US99360070	Jun-11-2010
Dielectric Probe Kit HP85070C	US99360070	

#### 4. Electrical parameters of the tissue simulating liquid

Prior to conducting SAR measurements, the relative permittivity,  $\epsilon_r$ , and the conductivity,  $\sigma$ , of the tissue simulating liquids were measured with a HP85070 Dielectric Probe Kit. These values, along with the temperature of the simulated tissue are shown in the table below. The recommended limits for permittivity and conductivity are also shown. A mass density of  $\rho = 1 \text{ g/cm}^3$  was entered into the system in all the cases. It can be seen that the measured parameters are within tolerance of the recommended limits specified in [1] and [5].

f (MHz)	Tissue type	Limits / Measured	Dielectric Parameters		
			$\epsilon_r$	$\sigma$ (S/m)	Temp (°C)
835	Head	Measured, Jul-01-2009	41.5	0.92	19.2
		Recommended Limits	41.5 ±5%	0.90 ±5%	18-25
	Body	Measured, Jul-01-2009	53.6	0.99	19.4
		Recommended Limits	55.2 ±5%	0.97 ±5%	18-25
1880	Head	Measured, Jun-30-2009	38.5	1.46	19.0
		Recommended Limits	40.0 ±5%	1.40 ±5%	18-25
	Body	Measured, Jul-01-2009	51.8	1.59	18.7
		Recommended Limits	53.3 ±5%	1.52 ±5%	18-25
2450	Body	Measured, Jul-03-2009	52.6	2.04	19.4
		Recommended Limits	52.7 ±10%	1.95 ±5%	18-25

The list of ingredients and the percent composition used for the tissue simulates are indicated in the table below.

Ingredient	835 MHz / 900 MHz Head	835 MHz / 900 MHz Body	1800 MHz / 1900 MHz Head	1800 MHz / 1900 MHz Body	2450 MHz Head	2450 MHz Body
Sugar	57	44.9	--	--	--	--
DGBE	--	--	47	30.8	--	30
Diacetin	--	--	--	--	51	--
Water	40.45	53.06	52.62	68.8	48.75	70
Salt	1.45	0.94	0.38	0.4	0.15	--
HEC	1	1	--	--	--	--
Bact.	0.1	0.1	--	--	0.1	--

## 5. System Accuracy Verification

A system accuracy verification of the DASY4™ was performed using the measurement equipment listed in Section 3.1. The daily system accuracy verification occurs within the flat section of the SAM phantom.

A SAR measurement was performed to verify the measured SAR was within  $\pm 10\%$  from the target SAR indicated in Appendix 6. These frequencies are within  $\pm 10\%$  of the compliance test mid-band frequency as required in [1] and [5]. The test was conducted on the same days as the measurement of the DUT. Recommended limits for permittivity and conductivity, specified in [5], are shown in the table below. The obtained results from the system accuracy verification are also displayed in the table below. SAR values are normalized to 1 W forward power delivered to the dipole. It is seen that the system is operating within its specification, as the results are within acceptable tolerance of the reference values. The distributions of SAR compare well with those of the reference measurements (see Appendix 1). The tissue stimulant depth was verified to be 15.0 cm  $\pm$  0.5 cm. Z-axis scans showing the SAR penetration are also included in Appendix 1.

f (MHz)	Description	SAR (W/kg), 1 gram	Dielectric Parameters		Ambient Temp (°C)	Tissue Temp (°C)
			$\epsilon_r$	$\sigma$ (S/m)		
900	Measured, Jul-01-2009	11.975	40.9	0.98	20.3	19.0
	Recommended Limits	11.19	41.5 $\pm 5\%$	0.97 $\pm 5\%$	18-25	18-25
1800	Measured, Jun-30-2009	38.625	39.0	1.38	20.1	19.2
	Measured, Jul-01-2009	38.475	38.6	1.36	20.0	19.9
	Recommended Limits	37.91	40.0 $\pm 5\%$	1.4 $\pm 5\%$	18-25	18-25
2450	Measured, Jul-02-2009	54.75	36.4	1.74	20.3	18.9
	Recommended Limits	56.68	39.2 $\pm 10\%$	1.80 $\pm 5\%$	18-25	18-25

The following probe conversion factors were used on the E-Field probe(s) used for the system accuracy verification measurements:

Description	Serial Number	f (MHz)	Conversion Factor	Cal Cert pg #
E-Field Probe ET3DV6	1524	900	5.23	8 of 9
		1810	4.43	8 of 9
		2450	3.89	8 of 9

## 6. Test Results

The test sample was operated using an actual transmission through a base station simulator. The base station simulator was set up to the proper channel, transmitter power level and transmit mode of operation. The phone was tested in the configurations stipulated in [1], [4] and [5]. The phone was positioned into these configurations using the device holder supplied with the DASY4™ SAR measurement system. The measured dielectric constant of the material used for the device holder is less than 2.9 and the loss tangent is less than 0.02 (± 30%) at 850 MHz. The default settings for the “coarse” and “cube” scans were chosen and used for measurements. The grid spacing of the course scan was set to 15 mm as shown in the SAR plots included in Appendix 2 and 3. Please refer to the DASY4™ manual for additional information on SAR scanning procedures and algorithms used.

The Cellular Phone model covered by this report has the following battery options:

Model SNN5832A - 950 mAH Battery

Model SNN5834A - 780 mAH Battery

The battery with the highest capacity is the Model SNN5832A. This battery was used to do most of the SAR testing. The phone was placed in the SAR measurement system with a fully charged battery. The configurations that resulted in the highest SAR values were tested using the other battery listed above.

Per the “SAR Measurement Procedures for 3G Devices” released in October, 2007, RC1, RC3 and RC3 (FCH + SCH) CDMA modes, EVDO Rev O, EVDO Rev A were considered. The conducted power measurements (per steps 3, 4 & 10 of section 4.4.5.2 of 3GPP2 C.5.011 / TIA -98-E) for each mode are shown in the table below.

Conducted power (dBm) for CDMA modes						
	Channel	RC1		RC3		RC3 (FCH + SCH)
		SO2	SO55	SO2	SO55	
CDMA 800	1013	25.15	25.03	25.06	24.96	Per Motorola designs, the maximum power, when in a mode that allows supplemental channels, will always be less than the RC3/RC1 maximum conducted power limit.
	384	25.11	25.03	24.97	24.99	
	777	25.00	24.90	24.84	24.90	
CDMA 1900	25	24.99	24.99	24.97	24.90	
	600	25.00	25.00	24.89	24.91	
	1175	24.95	24.95	24.83	24.82	

Conducted power (dBm) for EVDO modes			
	Channel	Rev 0	
		FTAP 307.2k	RTAP 153.6k
CDMA 800	1013	24.84	25.10
	384	24.79	25.07
	777	24.66	24.93
CDMA 1900	25	25.35	25.06
	600	25.41	25.03
	1175	25.41	24.97

## 6.1 Head Adjacent Test Results

The SAR results shown in tables 1 through 6 are maximum SAR values averaged over 1 gram of phantom tissue, to demonstrate compliance to [3] and also over 10 grams of phantom tissue, to demonstrate compliance to the [6]. Also shown are the measured conducted output power levels for the CDMA RC3/SO55 mode, the temperature of the simulated tissue after the test, the measured drift and the extrapolated SAR. The exact method of extrapolation is  $\text{New SAR} = \text{Old SAR} * 10^{(-\text{drift}/10)}$ . The SAR reported at the end of the measurement process by the DASY4™ measurement system can be scaled up by the measured drift to determine the SAR at the beginning of the measurement process. This is the most conservative SAR because it corresponds to the average output power at the beginning of the SAR test. This extrapolation has been done because when the DUT is operating properly it may exhibit a slump in radiated power and SAR over time. This is verified by measuring the SAR drift after the test. Note that 800 MHz digital mode SAR measurements were performed in accordance with [4].

The left head and right head SAR contour distributions are similar. Because of this similarity, the cheek/touch and 15° tilt test conditions with the highest SAR values in each band are indicated as bold numbers in the following tables and are included in Appendix 2. All other test conditions measured lower SAR values than those included in Appendix 2.

The SAR measurements were performed using the SAM phantoms listed in section 3.1. Since the same phantoms and simulated tissue were used for the system accuracy verification and the device SAR measurements, the Z-axis scans included in Appendix 1 are applicable for verification of simulated tissue depth to be 15.0 cm ± 0.5 cm.

The following probe conversion factors were used on the E-Field probe(s) used for head-adjacent measurements:

Description	Serial Number	f (MHz)	Conversion Factor	Cal Cert pg #
E-Field Probe ET3DV6	1524	900	5.23	8 of 9
		1810	4.43	8 of 9

Left Head Cheek Position								
f (MHz)	Description	Conducted Output Power (dBm)	Temp (°C)	Drift (dB)	10 g SAR value		1 g SAR value	
					Measured (W/kg)	Extrapolated (W/kg)	Measured (W/kg)	Extrapolated (W/kg)
CDMA 800	Channel 1013	24.96	19.3	0.064	0.711	0.71	0.983	0.98
	Channel 384	24.99	18.9	0.007	0.880	0.88	1.22	1.22
	Channel 777	24.90	19.2	-0.156	1.02	1.06	1.40	1.45
CDMA 1900	Channel 25	24.90	18.9	0.039	0.726	0.73	1.17	1.17
	Channel 600	24.91	19.0	-0.014	0.803	0.81	1.35	1.35
	Channel 1175	24.82	18.9	-0.058	0.771	0.78	1.33	1.35

Table 1: SAR measurement results at the highest possible output power, measured in a head cheek position against the ICNIRP and ANSI SAR Limit.

Right Head Cheek Position								
f (MHz)	Description	Conducted Output Power (dBm)	Temp (°C)	Drift (dB)	10 g SAR value		1 g SAR value	
					Measured (W/kg)	Extrapolated (W/kg)	Measured (W/kg)	Extrapolated (W/kg)
CDMA 800	Channel 1013	24.96	19.2	-0.094	0.749	0.77	1.04	1.06
	Channel 384	24.99	19.2	-0.167	0.926	0.96	1.29	1.34
	Channel 777	24.90	<b>19.2</b>	<b>-0.216</b>	<b>1.05</b>	<b>1.10</b>	<b>1.46</b>	<b>1.53</b>
CDMA 1900	Channel 25	24.90	19.0	-0.019	0.801	0.80	1.43	1.44
	Channel 600	24.91	19.0	-0.026	0.794	0.80	1.42	1.43
	Channel 1175	24.82	19.0	0.003	0.783	0.78	1.41	1.41

Table 2: SAR measurement results at the highest possible output power, measured in a head cheek position against the ICNIRP and ANSI SAR Limit.

Right Head Cheek Position with Battery SNN5834A								
f (MHz)	Description	Conducted Output Power (dBm)	Temp (°C)	Drift (dB)	10 g SAR value		1 g SAR value	
					Measured (W/kg)	Extrapolated (W/kg)	Measured (W/kg)	Extrapolated (W/kg)
CDMA 800	Channel 1013	24.96						
	Channel 384	24.99						
	Channel 777	24.90	19.2	-0.158	1.05	1.09	1.47	1.52
CDMA 1900	Channel 25	24.90	<b>19.0</b>	<b>0.123</b>	<b>0.814</b>	<b>0.81</b>	<b>1.49</b>	<b>1.49</b>
	Channel 600	24.91						
	Channel 1175	24.82						

Table 3: SAR measurement results at the highest possible output power, measured in a head cheek position against the ICNIRP and ANSI SAR Limit.

Left Head 15° Tilt Position								
f (MHz)	Description	Conducted Output Power (dBm)	Temp (°C)	Drift (dB)	10 g SAR value		1 g SAR value	
					Measured (W/kg)	Extrapolated (W/kg)	Measured (W/kg)	Extrapolated (W/kg)
CDMA 800	Channel 1013	24.96						
	Channel 384	24.99	19.5	0.001	0.476	0.48	0.658	0.66
	Channel 777	24.90						
CDMA 1900	Channel 25	24.90						
	Channel 600	24.91	19.0	0.004	0.356	0.36	0.612	0.61
	Channel 1175	24.82						

Table 4: SAR measurement results at the highest possible output power, measured in a head 15° Tilt position against the ICNIRP and ANSI SAR Limit.

Right Head 15° Tilt Position								
f (MHz)	Description	Conducted Output Power (dBm)	Temp (°C)	Drift (dB)	10 g SAR value		1 g SAR value	
					Measured (W/kg)	Extrapolated (W/kg)	Measured (W/kg)	Extrapolated (W/kg)
CDMA 800	Channel 1013	24.96						
	Channel 384	24.99	19.2	0.034	0.520	0.52	0.709	0.71
	Channel 777	24.90						
CDMA 1900	Channel 25	24.90	19.0	-0.035	0.424	0.43	0.743	0.75
	Channel 600	24.91	19.0	-0.018	0.455	0.46	0.807	0.81
	Channel 1175	24.82	19.0	0.001	0.457	0.46	0.824	0.82

Table 5: SAR measurement results at the highest possible output power, measured in a head 15° Tilt position against the ICNIRP and ANSI SAR Limit.

Right Head 15° Tilt Position with Battery SNN5834A								
f (MHz)	Description	Conducted Output Power (dBm)	Temp (°C)	Drift (dB)	10 g SAR value		1 g SAR value	
					Measured (W/kg)	Extrapolated (W/kg)	Measured (W/kg)	Extrapolated (W/kg)
CDMA 800	Channel 1013	24.96						
	Channel 384	24.99	19.2	-0.081	0.523	0.53	0.705	0.72
	Channel 777	24.90						
CDMA 1900	Channel 25	24.90						
	Channel 600	24.91						
	Channel 1175	24.82	19.5	-0.047	0.459	0.46	0.827	0.84

Table 6: SAR measurement results at the highest possible output power, measured in a head 15° Tilt position against the ICNIRP and ANSI SAR Limit.

## 6.2 Body Worn Test Results

The SAR results shown in tables 7 through 11 are maximum SAR values averaged over 1 gram of phantom tissue, to demonstrate compliance to [3] and also over 10 grams of phantom tissue, to demonstrate compliance to the [6]. Also shown are the measured conducted output power levels for the CDMA RC3/SO55 mode, the temperature of the test facility during the test, the temperature of the tissue simulate after the test, the measured drift and the extrapolated SAR. The exact method of extrapolation is  $New\ SAR = Old\ SAR * 10^{(-drift/10)}$ . The SAR reported at the end of the measurement process by the DASY4™ measurement system can be scaled up by the measured drift to determine the SAR at the beginning of the measurement process. This is the most conservative SAR because it corresponds to the average output power at the beginning of the SAR test. This extrapolation has been done because when the DUT is operating properly it may exhibit a slump in radiated power and SAR over time. This is verified by measuring the SAR drift after the test. Note that 800MHz digital mode SAR measurements were performed in accordance with [4].

The test conditions that produced the highest SAR values in each band are indicated as bold numbers in the following tables and are included in Appendix 3. All other test conditions measured lower SAR values than those included in Appendix 3. The tables below also include SAR value summations for primary and secondary co-located transmitters, with the results indicated in italics.

A “flat” phantom was for the body-worn tests. This “flat” phantom is made out of 1” thick natural High Density Polyethylene with a thickness at the bottom equal to 2.0 mm. It measures 52.7 cm(long) x 26.7 cm(wide) x 21.2 cm(tall). The measured dielectric constant of the material used is less than 2.3 and the loss tangent is less than 0.0046 all the way up to 2.184 GHz.

The tissue stimulant depth was verified to be 15.0 cm ± 0.5 cm. The same device holder described in section 6 was used for positioning the phone. The functional accessories were divided into two categories, the ones with metal components and the ones with non-metal components. For non-metallic component accessories’, testing was performed on the accessory that displayed the closest proximity to the flat phantom. Each metallic component accessory, if any, was checked for uniqueness of metal component so that each is tested with the device. If multiple accessories shared an identical metal component, only the accessory that dictates the closest spacing to the body was tested. The cellular phone was tested with a headset connected to the device for all body-worn SAR measurements.

There are no Body-Worn Accessories available for this phone at the time of testing and thus the device was tested per the supplement C testing guidelines for devices that do not have body-worn accessories. A separation distance of 15 mm between the device and the flat phantom was used for testing body-worn SAR. The device was tested with the front and back of the device facing the phantom.

Additionally, the cellular phone was tested in data mode operations. For these tests, a separation distance of 25 mm between the device and the flat phantom was used. The device was tested in the worst-case position from the tests noted above.

The following probe conversion factors were used on the E-Field probe(s) used for body-worn measurements:

Description	Serial Number	f (MHz)	Conversion Factor	Cal Cert pg #
E-Field Probe ET3DV6	1524	900	5.14	8 of 9
		1810	4.03	8 of 9
		2450	3.40	8 of 9

Body-Worn; Front of Phone 15 mm from Phantom								
<i>f</i> (MHz)	Description	Conducted Output Power (dBm)	Temp (°C)	Drift (dB)	10 g SAR value		1 g SAR value	
					Measured (W/kg)	Extrapolated (W/kg)	Measured (W/kg)	Extrapolated (W/kg)
CDMA 800	Channel 1013	24.96						
	Channel 384	24.99	19.5	-0.282	0.393	0.42	0.534	0.57
	Channel 777	24.90						
CDMA 1900	Channel 25	24.90	18.5	0.029	0.439	0.44	0.748	0.75
	Channel 600	24.91	18.0	-0.118	0.481	0.49	0.808	0.83
	Channel 1175	24.82	18.3	-0.176	0.414	0.43	0.699	0.73

Table 7: SAR measurement results at the highest possible output power, measured in a body-worn position against the ICNIRP and ANSI SAR Limit.

Body-Worn; Back of Phone 15 mm from Phantom								
<i>f</i> (MHz)	Description	Conducted Output Power (dBm)	Temp (°C)	Drift (dB)	10 g SAR value		1 g SAR value	
					Measured (W/kg)	Extrapolated (W/kg)	Measured (W/kg)	Extrapolated (W/kg)
CDMA 800	Channel 1013	24.96	19.4	0.024	0.622	0.62	0.931	0.93
	Channel 384	24.99	19.2	-0.053	0.918	0.93	1.34	1.36
	Channel 777	24.90	19.2	-0.188	0.806	0.84	1.21	1.26
CDMA 1900	Channel 25	24.90	18.1	-0.013	0.547	0.55	0.976	0.98
	Channel 600	24.91	<b>18.7</b>	<b>0.009</b>	<b>0.638</b>	<b>0.64</b>	<b>1.13</b>	<b>1.13</b>
	Channel 1175	24.82	18.6	0.007	0.586	0.59	1.03	1.03
Bluetooth 2450	Channel 0							
	Channel 39	7.255	<b>19.4</b>	<b>-0.101</b>	<b>0.00152</b>	<b>0.00</b>	<b>0.00252</b>	<b>0.00</b>
	Channel 78							
CDMA 800 + Bluetooth						0.93		1.36
CDMA 1900 + Bluetooth						0.64		1.13

Table 8: SAR measurement results at the highest possible output power, measured in a body-worn position against the ICNIRP and ANSI SAR Limit.

Body-Worn; Bluetooth Mode, Back of Phone 25 mm from Phantom								
f (MHz)	Description	Conducted Output Power (dBm)	Temp (°C)	Drift (dB)	10 g SAR value		1 g SAR value	
					Measured (W/kg)	Extrapolated (W/kg)	Measured (W/kg)	Extrapolated (W/kg)
Bluetooth 2450	Channel 0							
	Channel 39	7.255	19.1	-0.350	0.000738	0.00	0.00129	0.00
	Channel 78							

Table 9: SAR measurement results at the highest possible output power, measured in a body-worn position against the ICNIRP and ANSI SAR Limit.

Body-Worn; EV-DO Rel. O (FTAP Mode), Back of Phone 25 mm from Phantom								
f (MHz)	Description	Conducted Output Power (dBm)	Temp (°C)	Drift (dB)	10 g SAR value		1 g SAR value	
					Measured (W/kg)	Extrapolated (W/kg)	Measured (W/kg)	Extrapolated (W/kg)
EV-DO 1900	Channel 25	25.35						
	Channel 600	25.41	18.3	-0.220	0.232	0.24	0.375	0.39
	Channel 1175	25.41						
EV-DO 1900 + Bluetooth						0.24		0.39

Table 10: SAR measurement results at the highest possible output power, measured in a body-worn position against the ICNIRP and ANSI SAR Limit.

Body-Worn; Back of Phone 15 mm from Phantom with Battery SNN5834A								
f (MHz)	Description	Conducted Output Power (dBm)	Temp (°C)	Drift (dB)	10 g SAR value		1 g SAR value	
					Measured (W/kg)	Extrapolated (W/kg)	Measured (W/kg)	Extrapolated (W/kg)
CDMA 800	Channel 1013	24.96						
	Channel 384	24.99	19.4	-0.039	0.957	0.57	1.42	1.43
	Channel 777	24.90						
CDMA 1900	Channel 25	24.90						
	Channel 600	24.91	18.2	-0.145	0.597	0.62	1.05	1.09
	Channel 1175	24.82						
Bluetooth 2450	Channel 0							
	Channel 39	7.255	19.1	0.137	0.00137	0.00	0.00244	0.00
	Channel 78							
CDMA 800 + Bluetooth						0.57		1.43
CDMA 1900 + Bluetooth						0.62		1.09

Table 11: SAR measurement results at the highest possible output power, measured in a body-worn position against the ICNIRP and ANSI SAR Limit.

## References

- [1] CENELEC, en62209-1:2006 “Human Exposure to Radio Frequency Fields From Hand - Held and Body - Mounted Wireless Communication Devices – Human Models, Instrumentation, and Procedures”
- [2] CENELEC, en50360:2001 “Product standard to demonstrate the compliance of mobile phones with the basic restrictions related to human exposure to electromagnetic fields (300 MHz – 3 GHz)”.
- [3] ANSI / IEEE, C95.1 1999 Edition “IEEE Standard for Safety Levels with Respect to Human Exposure to Radio Frequency Electromagnetic Fields, 3 kHz to 300 GHz”
- [4] FCC OET Bulletin 65 Supplement C 01-01
- [5] IEEE 1528 2003 Edition “IEEE Recommended Practice for Determining the Peak Spatial-Average Specific Absorption Rate (SAR) in the Human Head from Wireless Communications Devices: Measurement Techniques”
- [6] ICNIRP Guidelines “Guidelines for Limiting Exposure to Time-Varying Electric, Magnetic, and Electromagnetic Fields (up to 300 GHz)”

## **Appendix 1**

### **SAR distribution comparison for the system accuracy verification**

## Test Laboratory: Motorola - 070109 900 MHz

**DUT: Dipole 900 MHz; Type: D900V2; Serial: D900V2 - SN: 78; FCC ID: IHDP56KB1**

Procedure Notes: 900 MHz System Performance Check; Dipole Sn# 078; Input Power = 200 mW

Sim.Temp@meas = 19°C; Sim.Temp@SPC = 19°C; Room Temp @ SPC = 20.3°C

Communication System: CW - Dipole; Frequency: 900 MHz; Duty Cycle: 1:1

Medium: VALIDATION Only

Medium parameters used:  $f = 900$  MHz;  $\sigma = 0.98$  mho/m;  $\epsilon_r = 40.9$ ;  $\rho = 1000$  kg/m<sup>3</sup>

DASY4 Configuration:

- Probe: ET3DV6 - SN1524; ConvF(5.23, 5.23, 5.23); Calibrated: 2/12/2009
- Sensor-Surface: 4mm (Mechanical Surface Detection)
- Electronics: DAE4 Sn387; Calibrated: 4/1/2009
- Phantom: R1\_Sugar SAM (extended range), Rev.1 (25-Mar-05); Type: SAM v4.0; Serial: TP-1005;
- Measurement SW: DASY4, V4.7 Build 80; Postprocessing SW: SEMCAD, V1.8 Build 186

### Daily SPC Check/Dipole Area Scan (4x9x1):

Measurement grid: dx=15mm, dy=15mm; Maximum value of SAR (measured) = 2.40 mW/g

### Daily SPC Check/0-Degree, 5x5x7 Cube (5x5x7)/Cube 0:

Measurement grid: dx=8mm, dy=8mm, dz=5mm

Reference Value = 53.9 V/m; Power Drift = -0.039 dB; Peak SAR (extrapolated) = 3.59 W/kg

**SAR(1 g) = 2.41 mW/g; SAR(10 g) = 1.54 mW/g;** Maximum value of SAR (measured) = 2.62 mW/g

### Daily SPC Check/90-Degree 5x5x7 Cube (5x5x7)/Cube 0:

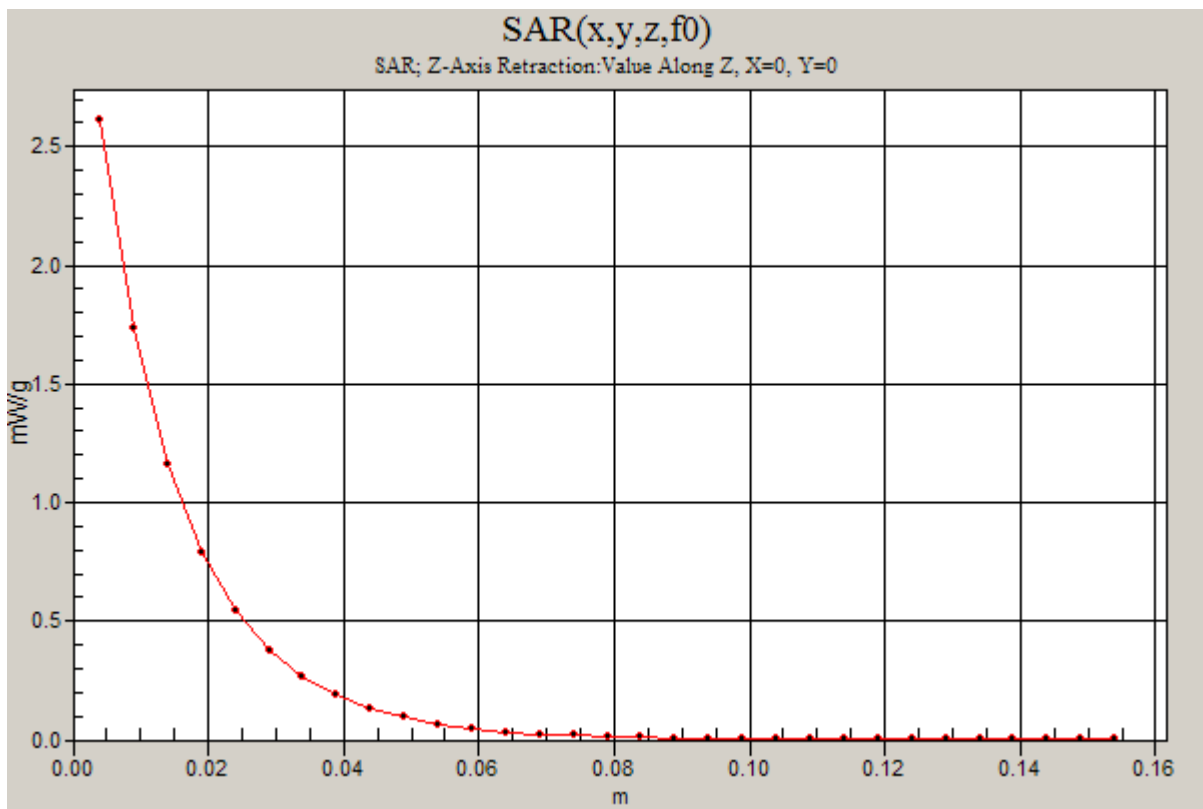
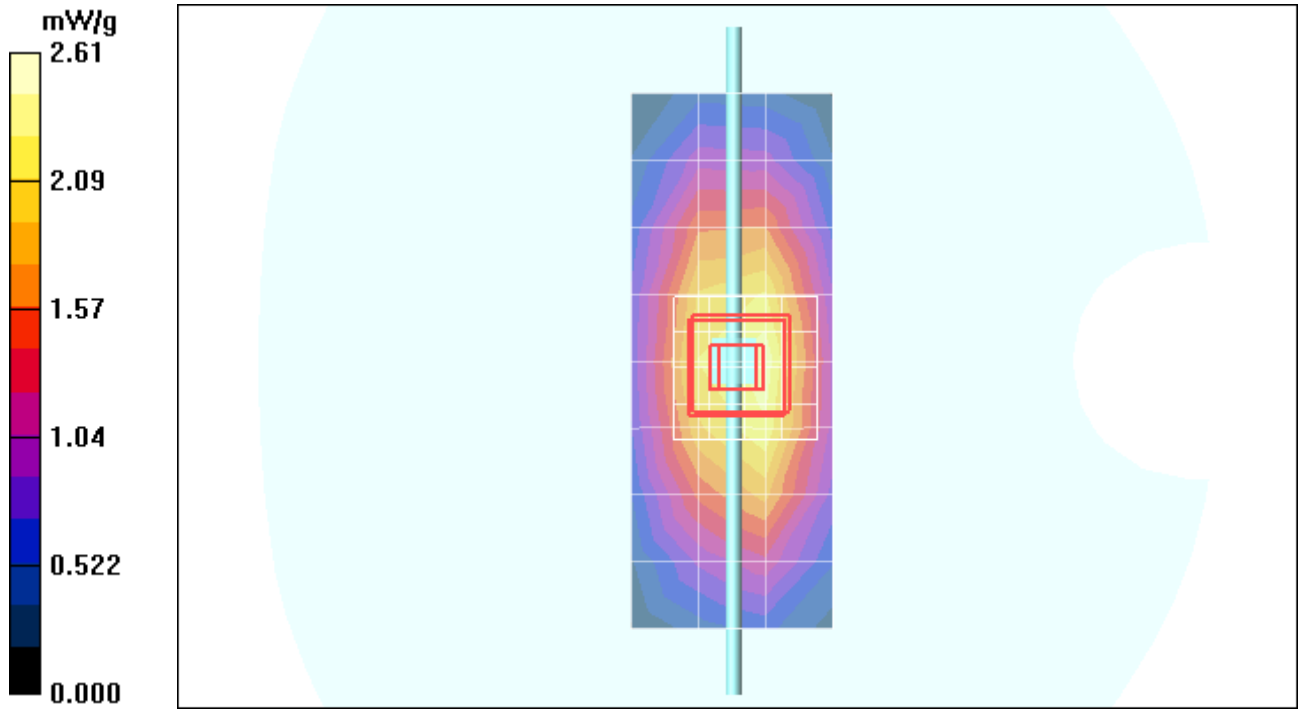
Measurement grid: dx=8mm, dy=8mm, dz=5mm

Reference Value = 53.9 V/m; Power Drift = -0.039 dB; Peak SAR (extrapolated) = 3.54 W/kg

**SAR(1 g) = 2.38 mW/g; SAR(10 g) = 1.52 mW/g;** Maximum value of SAR (measured) = 2.54 mW/g

### Daily SPC Check/Z-Axis Retraction (1x1x31):

Measurement grid: dx=20mm, dy=20mm, dz=5mm; Maximum value of SAR (measured) = 2.61 mW/g



## Test Laboratory: Motorola - 063009 1800 MHz

**DUT: Dipole 1800 MHz; Type: D1800V2; Serial: D1800V2 - SN: 259TR; FCC ID: IHDP56KB1**

Procedure Notes: 1800 MHz System Performance Check; Dipole Sn# 259tr; Input Power = 200 mW

Sim.Temp@meas = 19.2°C; Sim.Temp@SPC = 19.2°C; Room Temp @ SPC = 20.1°C

Communication System: CW - Dipole; Frequency: 1800 MHz; Duty Cycle: 1:1

Medium: VALIDATION Only

Medium parameters used:  $f = 1800$  MHz;  $\sigma = 1.38$  mho/m;  $\epsilon_r = 39$ ;  $\rho = 1000$  kg/m<sup>3</sup>

DASY4 Configuration:

- Probe: ET3DV6 - SN1524; ConvF(4.43, 4.43, 4.43); Calibrated: 2/12/2009
- Sensor-Surface: 4mm (Mechanical Surface Detection)
- Electronics: DAE4 Sn387; Calibrated: 4/1/2009
- Phantom: R1\_ Section 2, Amy Twin, Rev2 (23-June-04); Type: Amy Twin Flat; Serial: n/a;
- Measurement SW: DASY4, V4.7 Build 80; Postprocessing SW: SEMCAD, V1.8 Build 186

### Daily SPC Check/Dipole Area Scan (9x4x1):

Measurement grid: dx=15mm, dy=15mm; Maximum value of SAR (measured) = 8.73 mW/g

### Daily SPC Check/0-Degree 5x5x7 Cube (5x5x7)/Cube 0:

Measurement grid: dx=8mm, dy=8mm, dz=5mm

Reference Value = 75.7 V/m; Power Drift = 0.061 dB; Peak SAR (extrapolated) = 13.3 W/kg

**SAR(1 g) = 7.83 mW/g; SAR(10 g) = 4.2 mW/g; Maximum value of SAR (measured) = 8.70 mW/g**

### Daily SPC Check/90-Degree 5x5x7 Cube (5x5x7)/Cube 0:

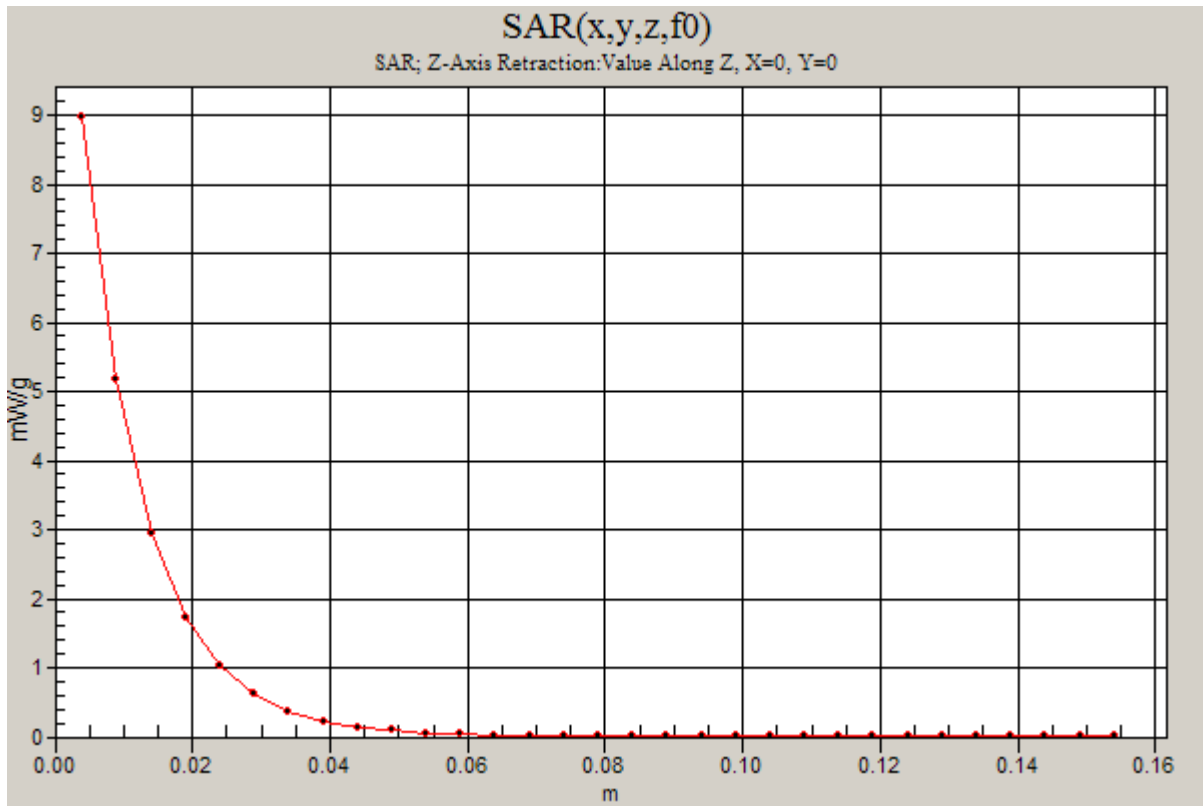
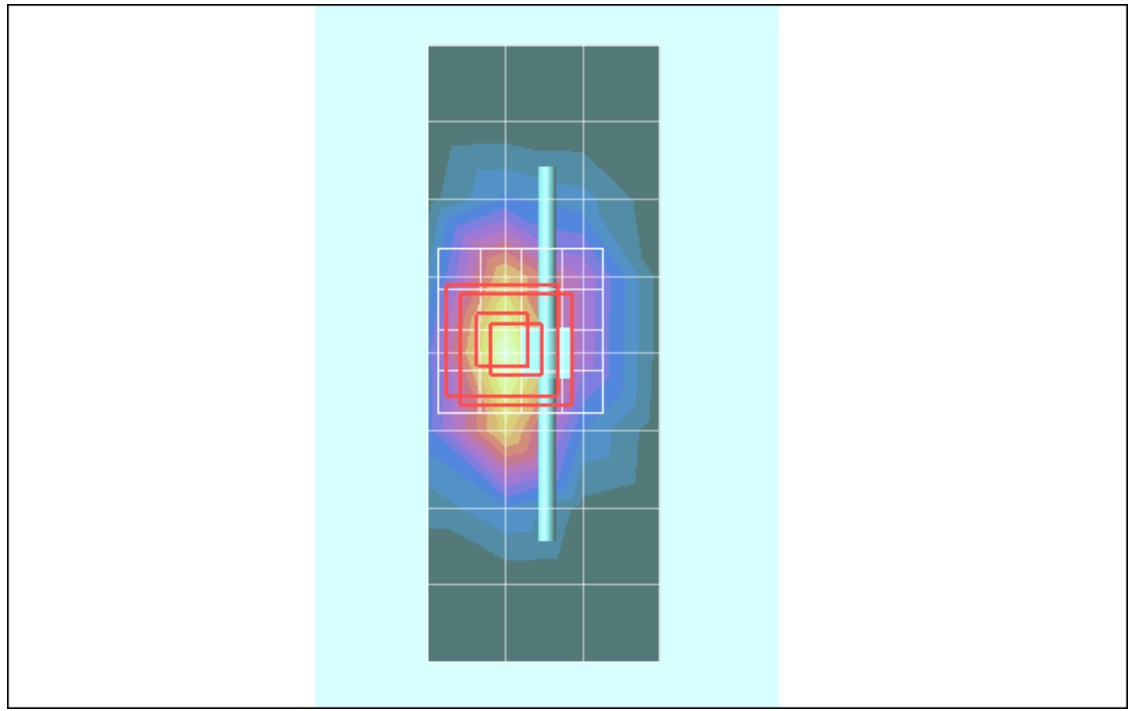
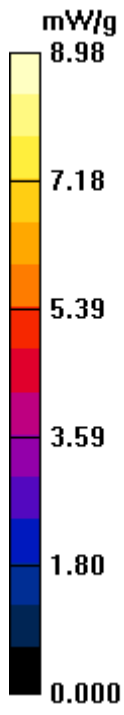
Measurement grid: dx=8mm, dy=8mm, dz=5mm

Reference Value = 75.7 V/m; Power Drift = 0.061 dB; Peak SAR (extrapolated) = 12.9 W/kg

**SAR(1 g) = 7.62 mW/g; SAR(10 g) = 4.1 mW/g; Maximum value of SAR (measured) = 8.16 mW/g**

### Daily SPC Check/Z-Axis Retraction (1x1x31):

Measurement grid: dx=20mm, dy=20mm, dz=5mm; Maximum value of SAR (measured) = 8.98 mW/g



## Test Laboratory: Motorola - 070109 1800MHz

**DUT: Dipole 1800 MHz; Type: D1800V2; Serial: D1800V2 - SN: 259TR; FCC ID: IHDP56KB1**

Procedure Notes: 1800 MHz System Performance Check; Dipole Sn# 259tr; Input Power = 200 mW

Sim.Temp@meas = 19°C; Sim.Temp@SPC = 19.9°C; Room Temp @ SPC = 20°C

Communication System: CW - Dipole; Frequency: 1800 MHz; Duty Cycle: 1:1

Medium: VALIDATION Only

Medium parameters used:  $f = 1800$  MHz;  $\sigma = 1.36$  mho/m;  $\epsilon_r = 38.6$ ;  $\rho = 1000$  kg/m<sup>3</sup>

DASY4 Configuration:

- Probe: ET3DV6 - SN1524; ConvF(4.43, 4.43, 4.43); Calibrated: 2/12/2009
- Sensor-Surface: 4mm (Mechanical Surface Detection)
- Electronics: DAE4 Sn387; Calibrated: 4/1/2009
- Phantom: R1\_ Section 2, Amy Twin, Rev2 (23-June-04); Type: Amy Twin Flat; Serial: n/a;
- Measurement SW: DASY4, V4.7 Build 80; Postprocessing SW: SEMCAD, V1.8 Build 186

### Daily SPC Check/Dipole Area Scan (9x4x1):

Measurement grid: dx=15mm, dy=15mm; Maximum value of SAR (measured) = 6.34 mW/g

### Daily SPC Check/0-Degree 5x5x7 Cube (5x5x7)/Cube 0:

Measurement grid: dx=8mm, dy=8mm, dz=5mm

Reference Value = 84.7 V/m; Power Drift = -0.055 dB; Peak SAR (extrapolated) = 13.3 W/kg

**SAR(1 g) = 7.79 mW/g; SAR(10 g) = 4.15 mW/g; Maximum value of SAR (measured) = 8.85 mW/g**

### Daily SPC Check/90-Degree 5x5x7 Cube (5x5x7)/Cube 0:

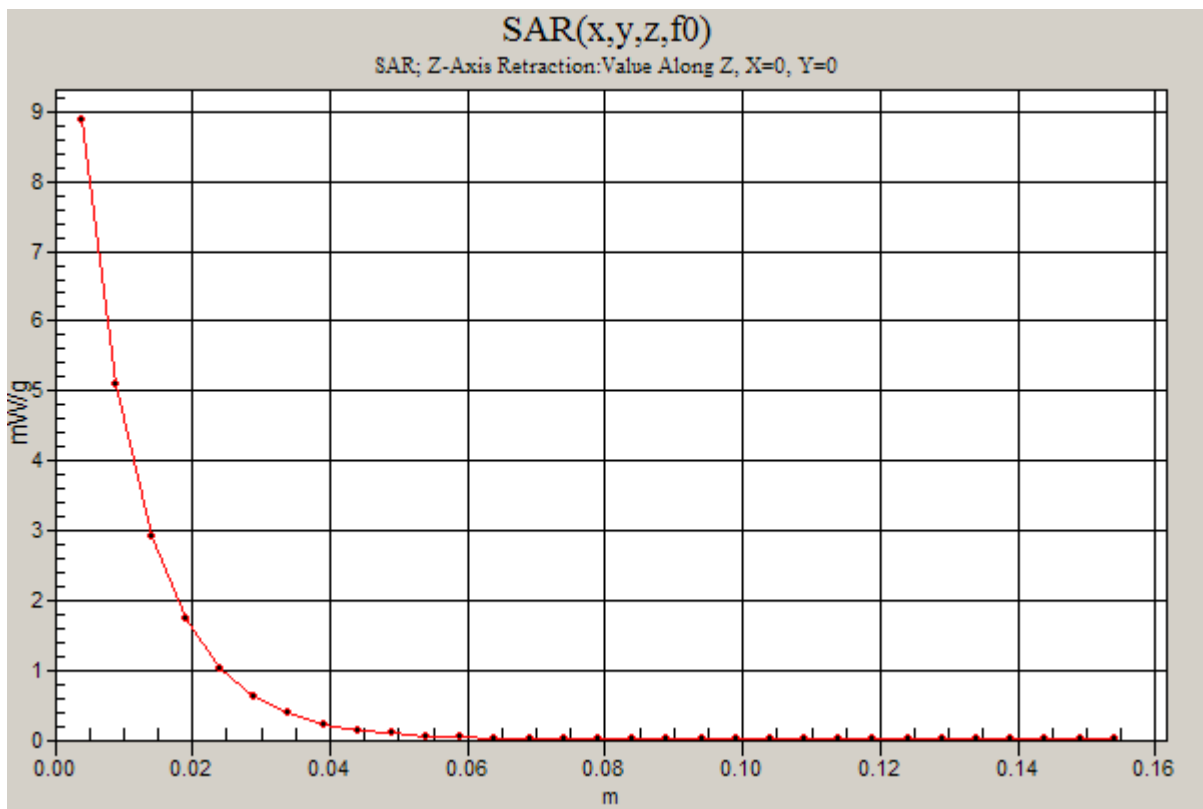
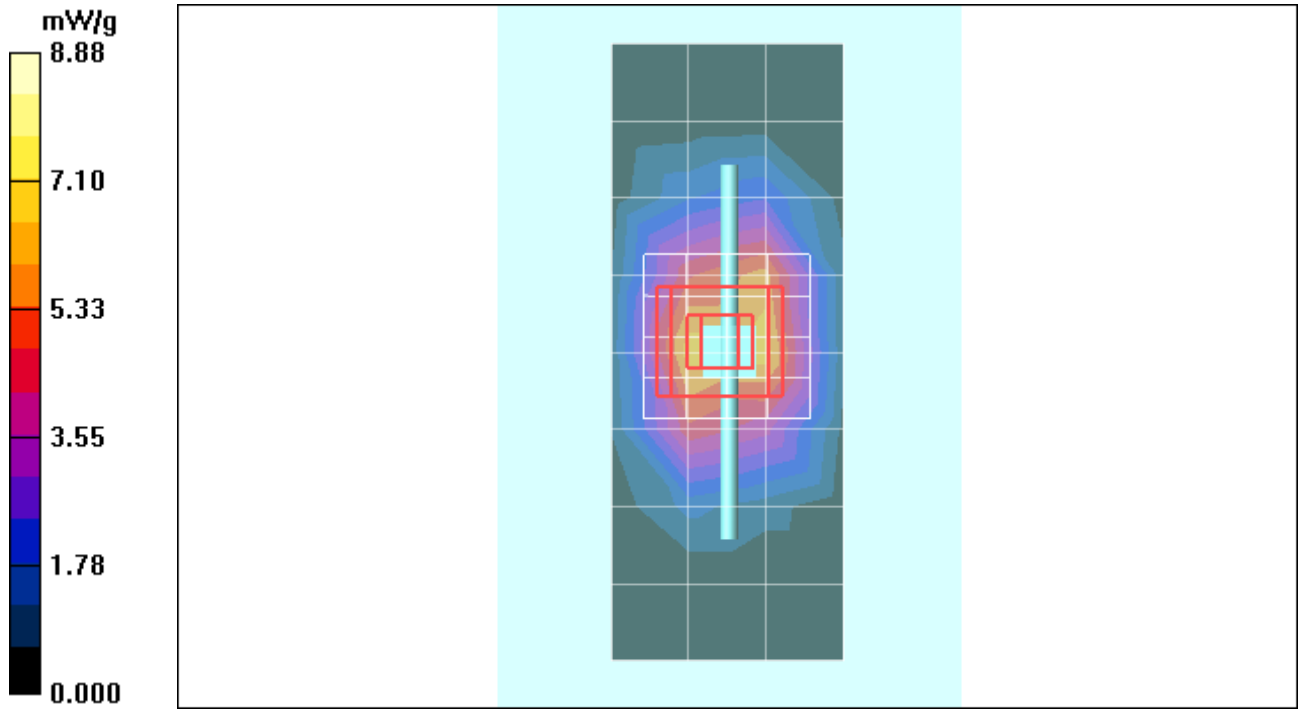
Measurement grid: dx=8mm, dy=8mm, dz=5mm

Reference Value = 84.7 V/m; Power Drift = -0.055 dB; Peak SAR (extrapolated) = 12.9 W/kg

**SAR(1 g) = 7.6 mW/g; SAR(10 g) = 4.08 mW/g; Maximum value of SAR (measured) = 8.23 mW/g**

### Daily SPC Check/Z-Axis Retraction (1x1x31):

Measurement grid: dx=20mm, dy=20mm, dz=5mm; Maximum value of SAR (measured) = 8.88 mW/g



## Test Laboratory: Motorola - 070209 2450MHz

**DUT: Dipole 2450 MHz; Type: D2450V2; Serial: D2450V2 - SN:740; FCC ID: IHDP56KB1**

Procedure Notes: 2450 MHz System Performance Check; Dipole Sn# 740; Input Power = 200 mW

Sim.Temp@meas = 18.8°C; Sim.Temp@SPC = 18.9°C; Room Temp @ SPC = 20.3°C

Communication System: CW - Dipole; Frequency: 2450 MHz; Duty Cycle: 1:1

Medium: VALIDATION Only

Medium parameters used:  $f = 2450$  MHz;  $\sigma = 1.74$  mho/m;  $\epsilon_r = 36.4$ ;  $\rho = 1000$  kg/m<sup>3</sup>

DASY4 Configuration:

- Probe: ET3DV6 - SN1524; ConvF(3.89, 3.89, 3.89); Calibrated: 2/12/2009
- Sensor-Surface: 4mm (Mechanical Surface Detection)
- Electronics: DAE4 Sn387; Calibrated: 4/1/2009
- Phantom: R1\_ Section 2, Amy Twin, Rev2 (23-June-04); Type: Amy Twin Flat; Serial: n/a;
- Measurement SW: DASY4, V4.7 Build 80; Postprocessing SW: SEMCAD, V1.8 Build 186

### Daily SPC Check/Dipole Area Scan (9x4x1):

Measurement grid: dx=15mm, dy=15mm; Maximum value of SAR (measured) = 8.53 mW/g

### Daily SPC Check/0-Degree 5x5x7 Cube (5x5x7)/Cube 0:

Measurement grid: dx=8mm, dy=8mm, dz=5mm

Reference Value = 88.1 V/m; Power Drift = -0.039 dB; Peak SAR (extrapolated) = 25.6 W/kg

**SAR(1 g) = 11 mW/g; SAR(10 g) = 4.98 mW/g;** Maximum value of SAR (measured) = 12.3 mW/g

### Daily SPC Check/90-Degree 5x5x7 Cube (5x5x7)/Cube 0:

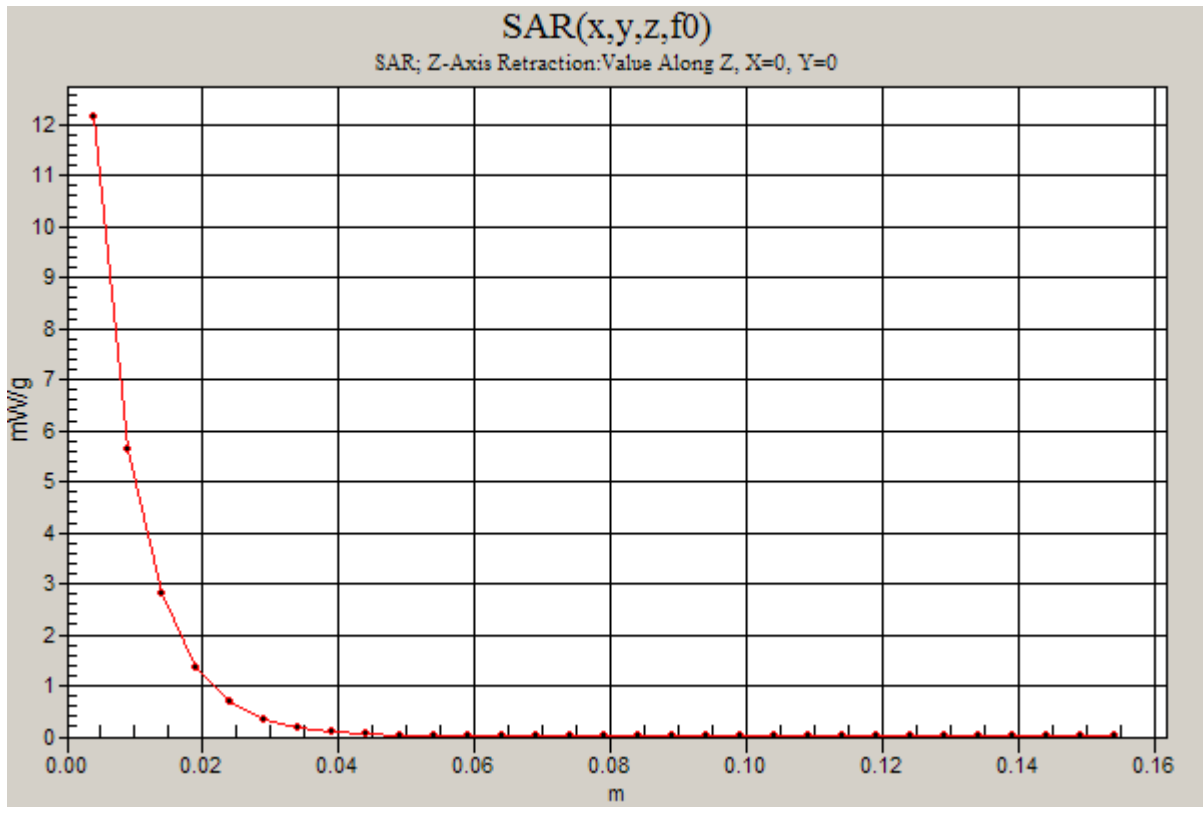
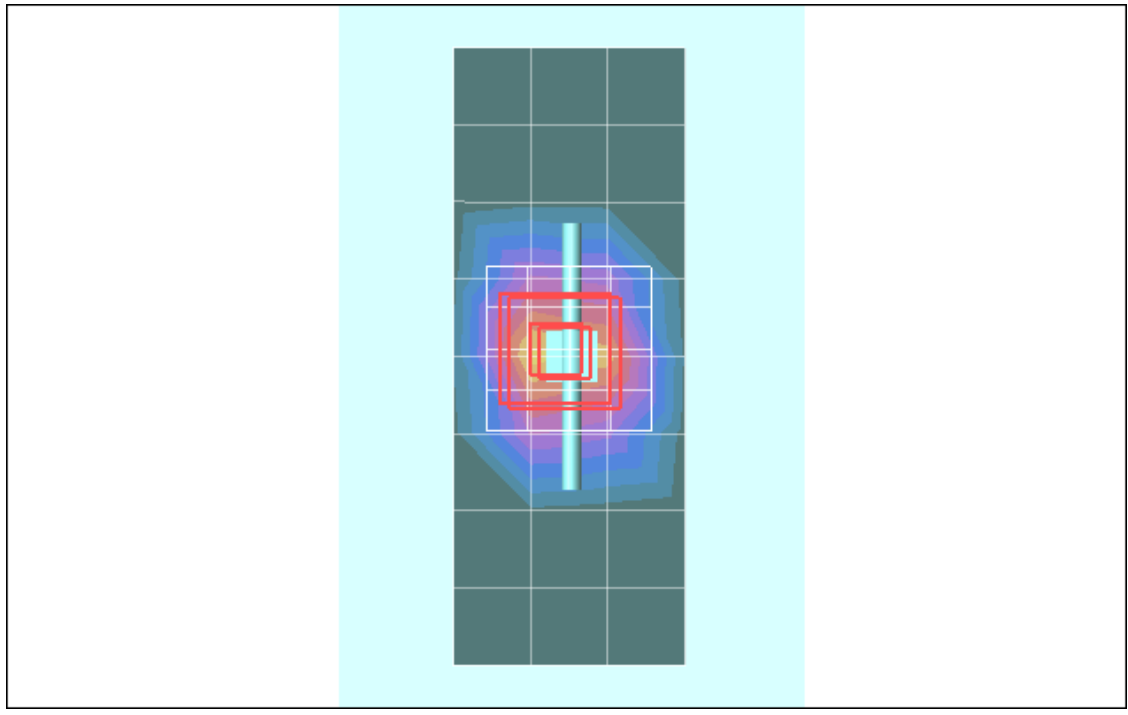
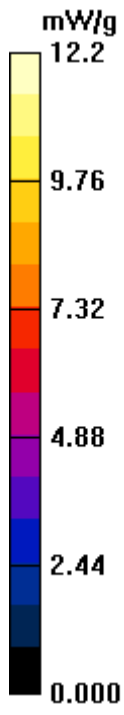
Measurement grid: dx=8mm, dy=8mm, dz=5mm

Reference Value = 88.1 V/m; Power Drift = -0.039 dB; Peak SAR (extrapolated) = 25.7 W/kg

**SAR(1 g) = 10.9 mW/g; SAR(10 g) = 4.92 mW/g;** Maximum value of SAR (measured) = 11.3 mW/g

### Daily SPC Check/Z-Axis Retraction (1x1x31):

Measurement grid: dx=20mm, dy=20mm, dz=5mm; Maximum value of SAR (measured) = 12.2 mW/g



## **Appendix 2**

### **SAR distribution plots for Phantom Head Adjacent Use**

## Test Laboratory: Motorola - CDMA 800 Cheek

Serial: 2CA2532; FCC ID: IHDP56KB1

Procedure Notes: Pwr Step: All up Bits; Antenna Position: Internal; Accessory Model #: N/A

Battery Model #: SNN5832A; DEVICE POSITION: Cheek

Communication System: CDMA 835; Frequency: 848.31 MHz; Channel Number: 777; Duty Cycle: 1:1

Medium: Low Freq Head

Medium parameters used:  $f = 835$  MHz;  $\sigma = 0.92$  mho/m;  $\epsilon_r = 41.5$ ;  $\rho = 1000$  kg/m<sup>3</sup>

DASY4 Configuration:

- Probe: ET3DV6 - SN1524; ConvF(5.23, 5.23, 5.23); Calibrated: 2/12/2009
- Sensor-Surface: 4mm (Mechanical Surface Detection)
- Electronics: DAE4 Sn387; Calibrated: 4/1/2009
- Phantom: R1\_Sugar SAM (extended range), Rev.1 (25-Mar-05); Type: SAM v4.0; Serial: TP-1005;
- Measurement SW: DASY4, V4.7 Build 80; Postprocessing SW: SEMCAD, V1.8 Build 186

### Right Head Template/Area Scan - Normal (15mm) (7x17x1):

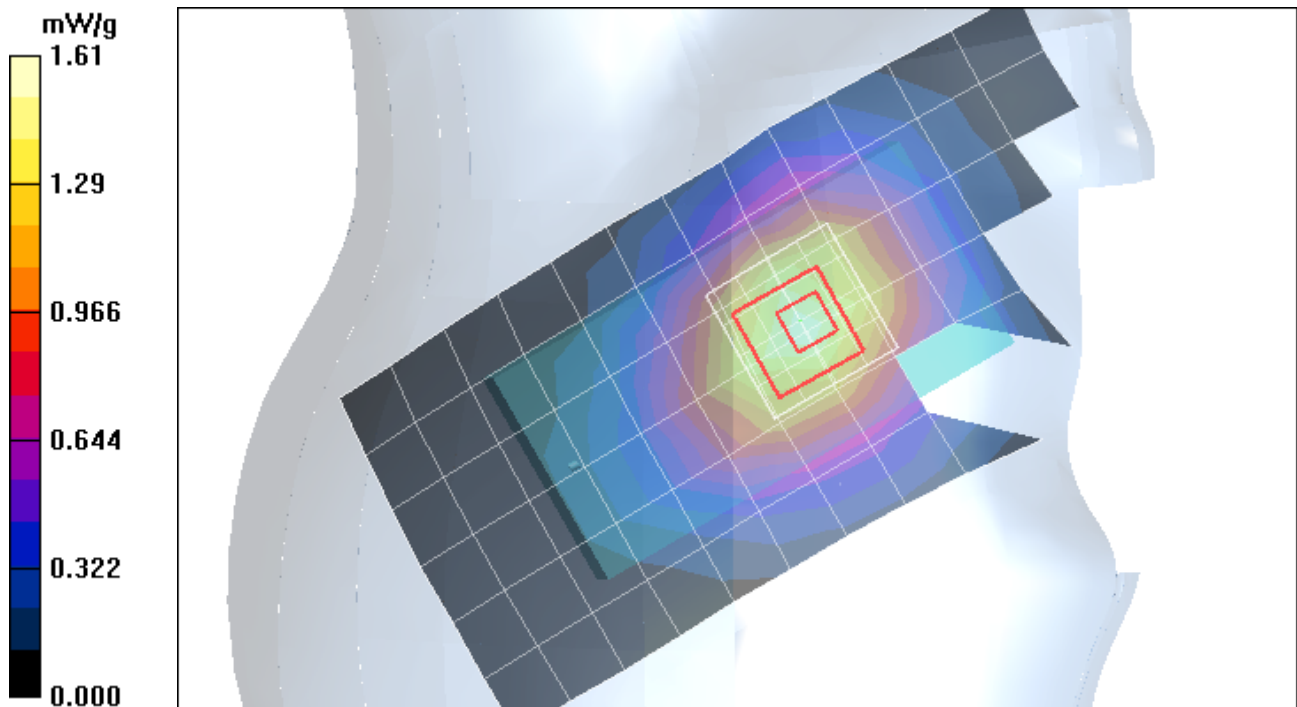
Measurement grid: dx=15mm, dy=15mm; Maximum value of SAR (measured) = 1.61 mW/g

### Right Head Template/5x5x7 Zoom Scan (<=3GHz) (5x5x7)/Cube 0:

Measurement grid: dx=8mm, dy=8mm, dz=5mm

Reference Value = 41.4 V/m; Power Drift = -0.216 dB; Peak SAR (extrapolated) = 1.88 W/kg

**SAR(1 g) = 1.46 mW/g; SAR(10 g) = 1.05 mW/g; Maximum value of SAR (measured) = 1.54 mW/g**



## Test Laboratory: Motorola - CDMA 1900 Cheek

Serial: 2CA2532; FCC ID: IHDP56KB1

Procedure Notes: Pwr Step: All Up Bits; Antenna Position: Internal; Accessory Model #: N/A

Battery Model #: SNN5834A; DEVICE POSITION (cheek or rotated): Cheek

Communication System: CDMA 1900; Frequency: 1851.25 MHz; Channel Number: 25; Duty Cycle: 1:1

Medium: Regular Glycol Head 1750/1880

Medium parameters used:  $f = 1880$  MHz;  $\sigma = 1.46$  mho/m;  $\epsilon_r = 38.5$ ;  $\rho = 1000$  kg/m<sup>3</sup>

DASY4 Configuration:

- Probe: ET3DV6 - SN1524; ConvF(4.43, 4.43, 4.43); Calibrated: 2/12/2009
- Sensor-Surface: 4mm (Mechanical Surface Detection)
- Electronics: DAE4 Sn387; Calibrated: 4/1/2009
- Phantom: R1\_Glycol, SAM (extended range), Rev.1 (25-Mar-05); Type: SAM v4.0; Serial: TP-1139;
- Measurement SW: DASY4, V4.7 Build 80; Postprocessing SW: SEMCAD, V1.8 Build 186

### Right Head Template/Area Scan - Normal (15mm) (7x17x1):

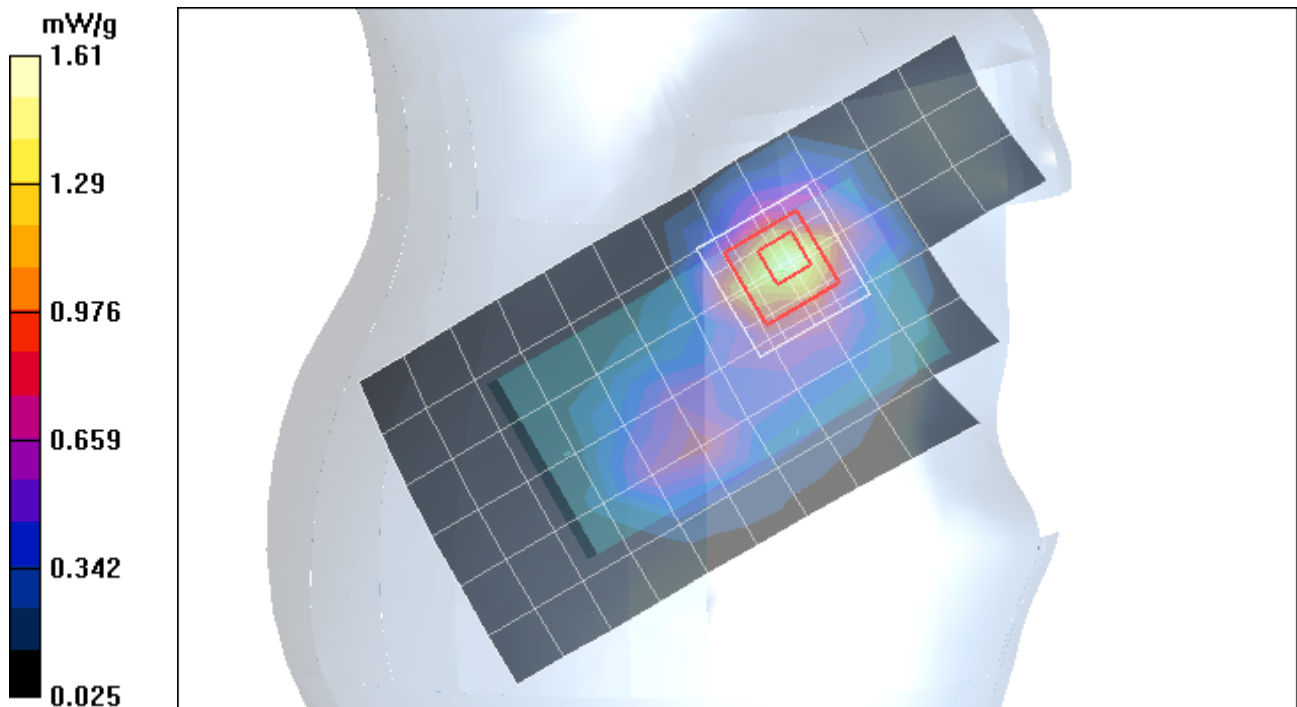
Measurement grid: dx=15mm, dy=15mm; Maximum value of SAR (measured) = 1.58 mW/g

### Right Head Template/5x5x7 Zoom Scan (<=3GHz) (5x5x7)/Cube 0:

Measurement grid: dx=8mm, dy=8mm, dz=5mm

Reference Value = 32.5 V/m; Power Drift = 0.123 dB; Peak SAR (extrapolated) = 2.33 W/kg

**SAR(1 g) = 1.49 mW/g; SAR(10 g) = 0.814 mW/g; Maximum value of SAR (measured) = 1.61 mW/g**



## Test Laboratory: Motorola - CDMA 800 Tilt

Serial: 2CA2532; FCC ID: IHDP56KB1

Procedure Notes: Pwr Step: All up Bits; Antenna Position: Internal; Accessory Model #: N/A

Battery Model #: SNN5834A; DEVICE POSITION: Tilted

Communication System: CDMA 835; Frequency: 836.52 MHz; Channel Number: 384; Duty Cycle: 1:1

Medium: Low Freq Head

Medium parameters used:  $f = 835$  MHz;  $\sigma = 0.92$  mho/m;  $\epsilon_r = 41.5$ ;  $\rho = 1000$  kg/m<sup>3</sup>

DASY4 Configuration:

- Probe: ET3DV6 - SN1524; ConvF(5.23, 5.23, 5.23); Calibrated: 2/12/2009
- Sensor-Surface: 4mm (Mechanical Surface Detection)
- Electronics: DAE4 Sn387; Calibrated: 4/1/2009
- Phantom: R1\_Sugar SAM (extended range), Rev.1 (25-Mar-05); Type: SAM v4.0; Serial: TP-1005;
- Measurement SW: DASY4, V4.7 Build 80; Postprocessing SW: SEMCAD, V1.8 Build 186

### Right Head Template/Area Scan - Normal (15mm) (7x17x1):

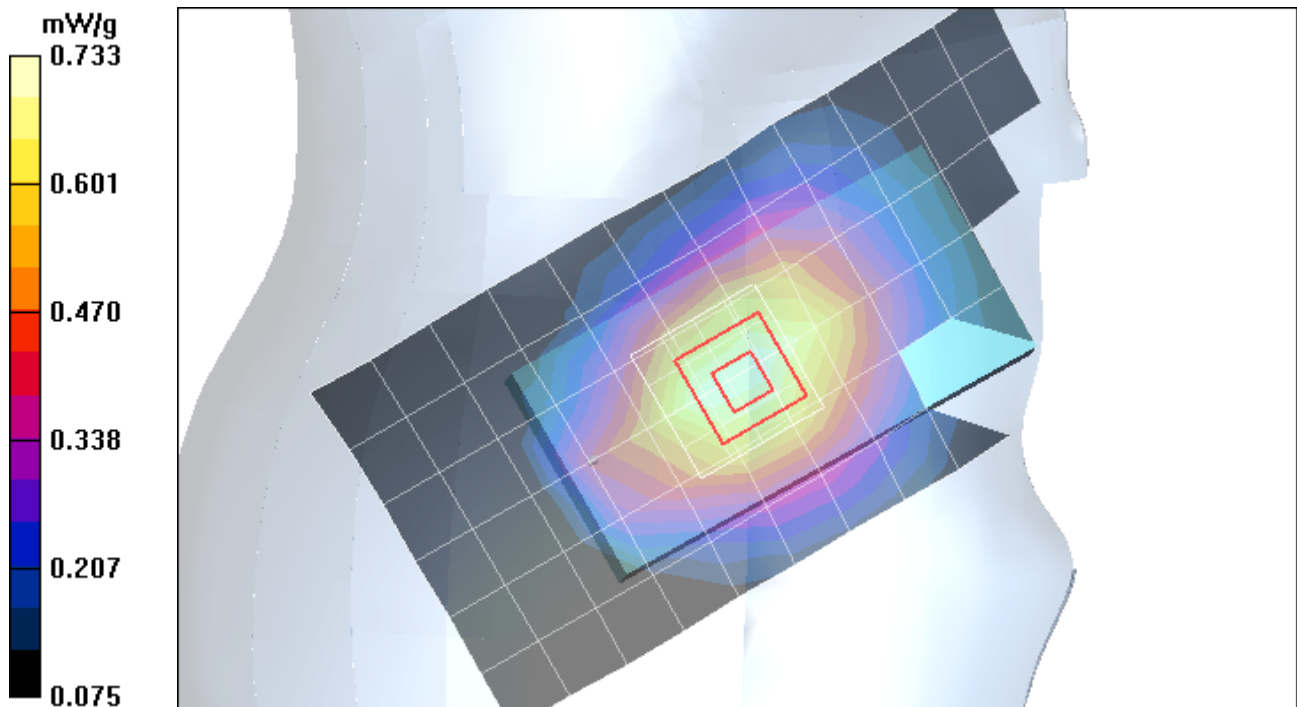
Measurement grid: dx=15mm, dy=15mm; Maximum value of SAR (measured) = 0.727 mW/g

### Right Head Template/5x5x7 Zoom Scan (<=3GHz) (5x5x7)/Cube 0:

Measurement grid: dx=8mm, dy=8mm, dz=5mm

Reference Value = 28.4 V/m; Power Drift = -0.081 dB; Peak SAR (extrapolated) = 0.869 W/kg

**SAR(1 g) = 0.705 mW/g; SAR(10 g) = 0.523 mW/g; Maximum value of SAR (measured) = 0.733 mW/g\**



# Test Laboratory: Motorola - CDMA 1900 Tilt

Serial: 2CA2532; FCC ID: IHDP56KB1

Procedure Notes: Pwr Step: All Up Bits; Antenna Position: Internal; Accessory Model #: N/A

Battery Model #: SNN5834A; DEVICE POSITION (cheek or rotated): Rotated

Communication System: CDMA 1900; Frequency: 1908.75 MHz; Channel Number: 1175; Duty Cycle: 1:1

Medium: Regular Glycol Head 1750/1880

Medium parameters used:  $f = 1880$  MHz;  $\sigma = 1.46$  mho/m;  $\epsilon_r = 38.5$ ;  $\rho = 1000$  kg/m<sup>3</sup>

DASY4 Configuration:

- Probe: ET3DV6 - SN1524; ConvF(4.43, 4.43, 4.43); Calibrated: 2/12/2009
- Sensor-Surface: 4mm (Mechanical Surface Detection)
- Electronics: DAE4 Sn387; Calibrated: 4/1/2009
- Phantom: R1\_Glycol, SAM (extended range), Rev.1 (25-Mar-05); Type: SAM v4.0; Serial: TP-1139;
- Measurement SW: DASY4, V4.7 Build 80; Postprocessing SW: SEMCAD, V1.8 Build 186

## Right Head Template/Area Scan - Normal (15mm) (7x17x1):

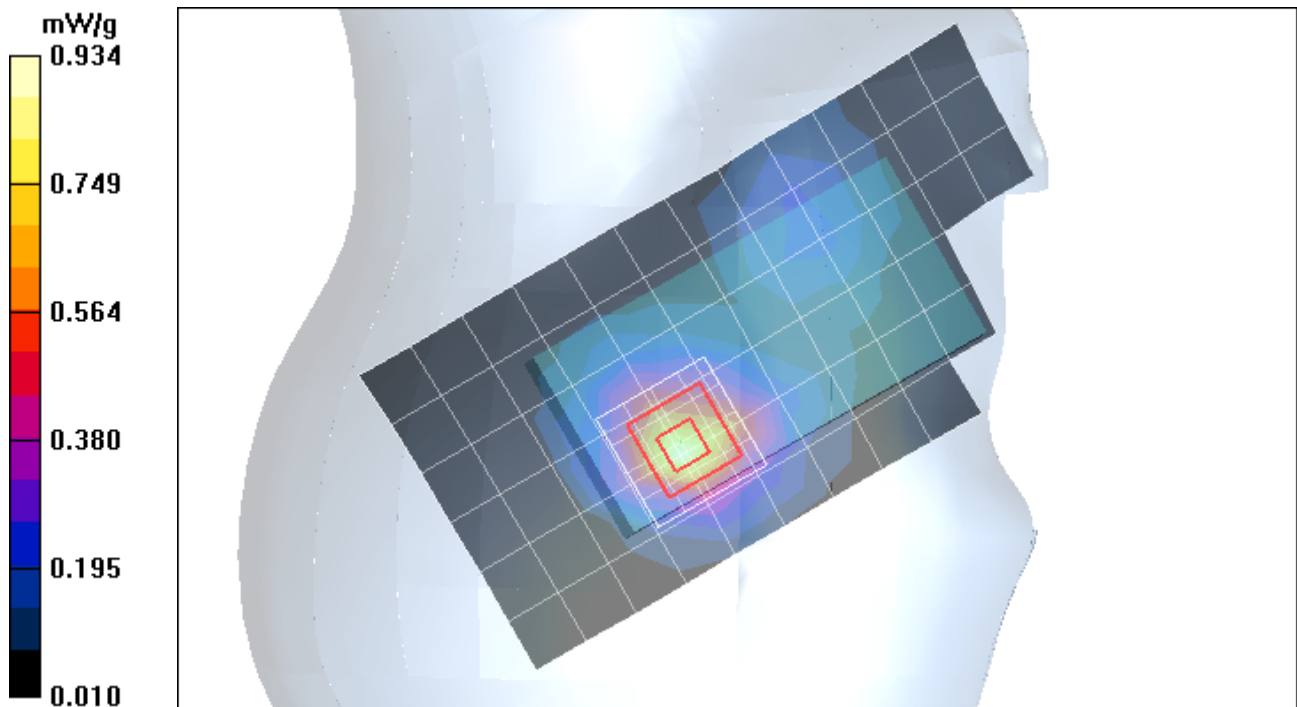
Measurement grid:  $dx=15$ mm,  $dy=15$ mm; Maximum value of SAR (measured) = 0.921 mW/g

## Right Head Template/5x5x7 Zoom Scan ( $\leq 3$ GHz) (5x5x7)/Cube 0:

Measurement grid:  $dx=8$ mm,  $dy=8$ mm,  $dz=5$ mm

Reference Value = 25.2 V/m; Power Drift = -0.047 dB; Peak SAR (extrapolated) = 1.33 W/kg

SAR(1 g) = 0.827 mW/g; SAR(10 g) = 0.459 mW/g; Maximum value of SAR (measured) = 0.934 mW/g



## **Appendix 3**

### **SAR distribution plots for Body Worn Configuration**

# Test Laboratory: Motorola - CDMA 800 Body-Worn

Serial: 2CA2532; FCC ID: IHDP56KB1

Procedure Notes: Pwr Step: All up Bits; Antenna Position: Internal; Battery Model #: SNN5834A

Device Position: Body Worn, Back of Phone 15mm from Phantom

Communication System: CDMA 835; Frequency: 836.52 MHz; Channel Number: 384; Duty Cycle: 1:1

Medium: Low Freq Body

Medium parameters used:  $f = 835$  MHz;  $\sigma = 0.99$  mho/m;  $\epsilon_r = 53.6$ ;  $\rho = 1000$  kg/m<sup>3</sup>

DASY4 Configuration:

- Probe: ET3DV6 - SN1524; ConvF(5.14, 5.14, 5.14); Calibrated: 2/12/2009
- Sensor-Surface: 4mm (Mechanical Surface Detection)
- Electronics: DAE4 Sn387; Calibrated: 4/1/2009
- Phantom: R1\_Section 1, Amy Twin, Rev2 (23-June-04); Type: Amy Twin Flat; Serial: n/a;
- Measurement SW: DASY4, V4.7 Build 80; Postprocessing SW: SEMCAD, V1.8 Build 186

## Amy Twin Phone Template/Area Scan - Normal Body (15mm) (13x7x1):

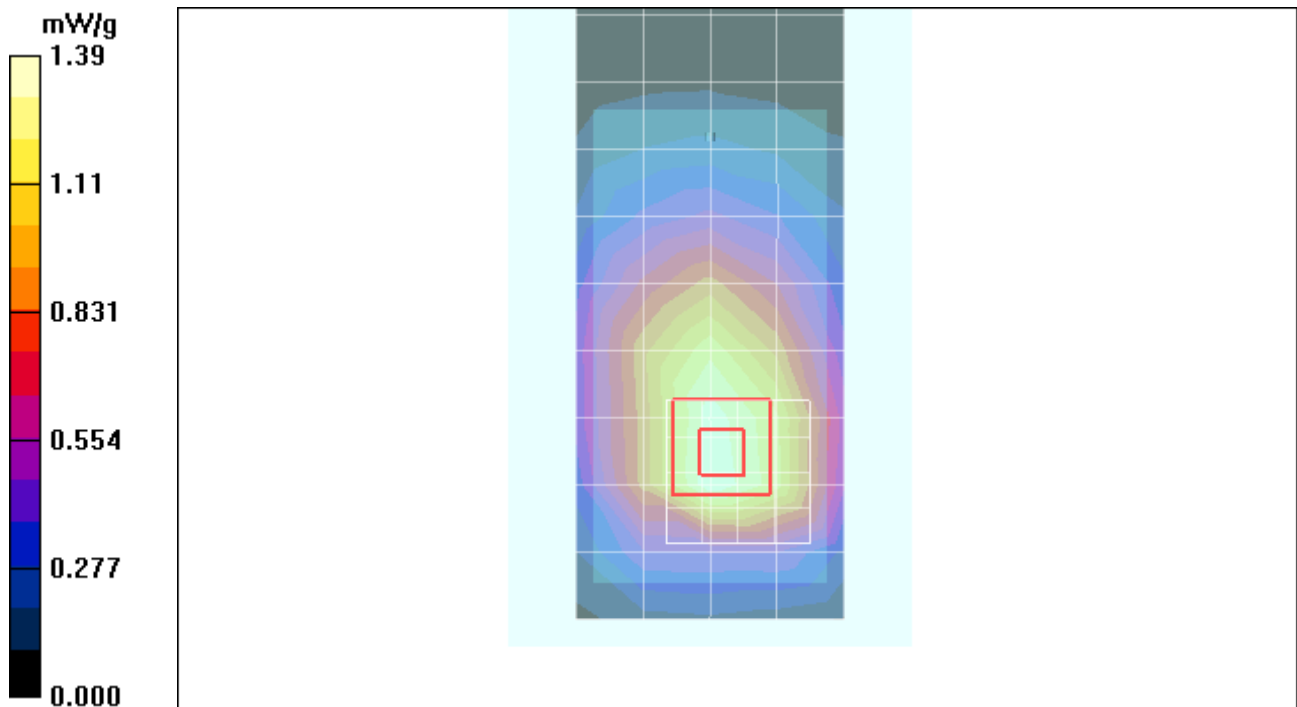
Measurement grid: dx=15mm, dy=15mm; Maximum value of SAR (measured) = 1.39 mW/g

## Amy Twin Phone Template/5x5x7 Zoom Scan (<=3GHz) (5x5x7)/Cube 0:

Measurement grid: dx=8mm, dy=8mm, dz=5mm

Reference Value = 40.5 V/m; Power Drift = -0.039 dB; Peak SAR (extrapolated) = 1.98 W/kg

**SAR(1 g) = 1.42 mW/g; SAR(10 g) = 0.957 mW/g; Maximum value of SAR (measured) = 1.48 mW/g**



## Test Laboratory: Motorola - CDMA 1900 Body-Worn

Serial: 2CA2532; FCC ID: IHDP56KB1

Procedure Notes: Pwr Step: All Up Bits; Antenna Position: Internal; Battery Model #: SNN5832A

Device Position: Body Worn, Back of Phone 15mm from Phantom

Communication System: CDMA 1900; Frequency: 1880 MHz; Channel Number: 600; Duty Cycle: 1:1

Medium: Regular Glycol Body 1750/1880

Medium parameters used:  $f = 1880$  MHz;  $\sigma = 1.59$  mho/m;  $\epsilon_r = 51.8$ ;  $\rho = 1000$  kg/m<sup>3</sup>

DASY4 Configuration:

- Probe: ET3DV6 - SN1524; ConvF(4.03, 4.03, 4.03); Calibrated: 2/12/2009
- Sensor-Surface: 4mm (Mechanical Surface Detection)
- Electronics: DAE4 Sn387; Calibrated: 4/1/2009
- Phantom: R1\_Section 2, Amy Twin, Rev2 (23-June-04); Type: Amy Twin Flat; Serial: n/a;
- Measurement SW: DASY4, V4.7 Build 80; Postprocessing SW: SEMCAD, V1.8 Build 186

### Amy Twin Phone Template/Area Scan - Full Body (15mm) (18x8x1):

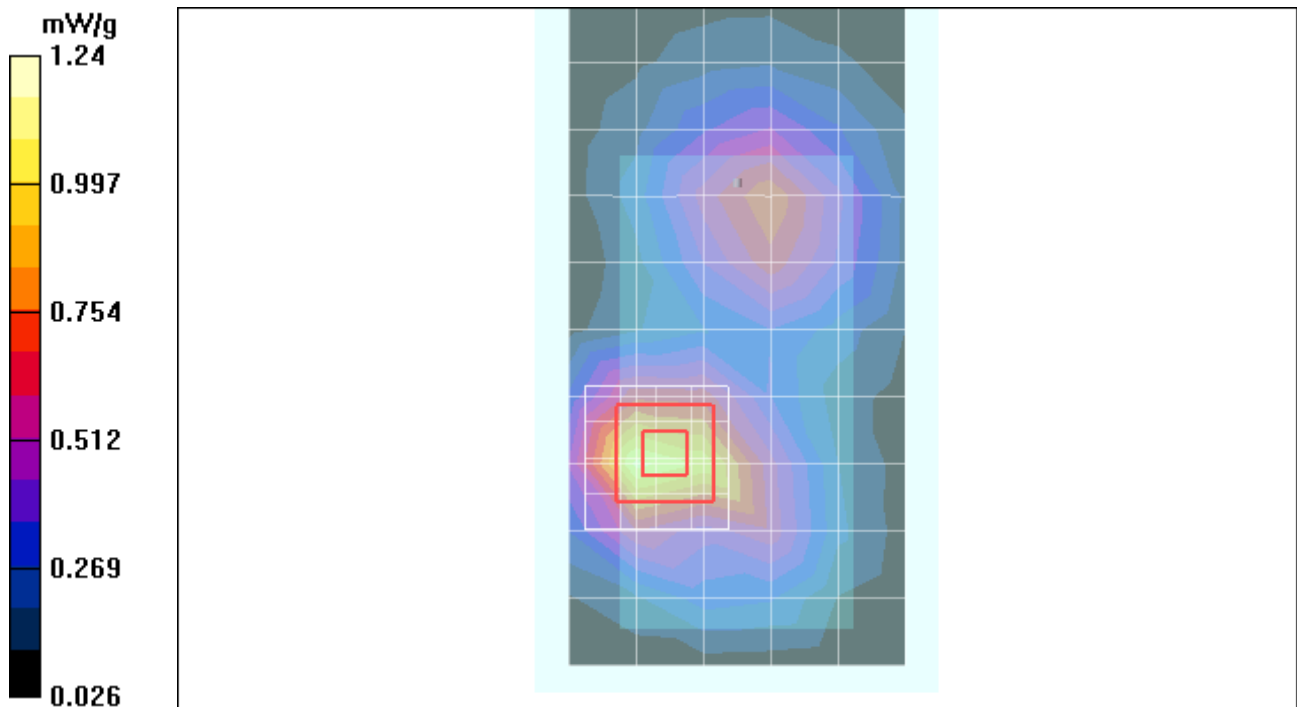
Measurement grid:  $dx=15$ mm,  $dy=15$ mm; Maximum value of SAR (measured) = 1.11 mW/g

### Amy Twin Phone Template/5x5x7 Zoom Scan ( $\leq 3$ GHz) (5x5x7)/Cube 0:

Measurement grid:  $dx=8$ mm,  $dy=8$ mm,  $dz=5$ mm

Reference Value = 21.7 V/m; Power Drift = 0.009 dB; Peak SAR (extrapolated) = 1.91 W/kg

**SAR(1 g) = 1.13 mW/g; SAR(10 g) = 0.638 mW/g; Maximum value of SAR (measured) = 1.24 mW/g**



# Test Laboratory: Motorola - Bluetooth Body-Worn

Serial: 2CA2532; FCC ID: IHDP56KB1

Procedure Notes: Pwr Step: N/A; Antenna Position: Internal; Battery Model #: SNN5832A

Device Position: Body Worn, Back of Phone 15mm from Phantom

Communication System: Bluetooth; Frequency: 2441 MHz; Channel Number: 39; Duty Cycle: 1:1

Medium: 2450 Glycol Body

Medium parameters used:  $f = 2450$  MHz;  $\sigma = 2.04$  mho/m;  $\epsilon_r = 52.6$ ;  $\rho = 1000$  kg/m<sup>3</sup>

DASY4 Configuration:

- Probe: ET3DV6 - SN1524; ConvF(3.4, 3.4, 3.4); Calibrated: 2/12/2009
- Sensor-Surface: 4mm (Mechanical Surface Detection)
- Electronics: DAE4 Sn387; Calibrated: 4/1/2009
- Phantom: R1\_Section 2, Amy Twin, Rev2 (23-June-04); Type: Amy Twin Flat; Serial: n/a;
- Measurement SW: DASY4, V4.7 Build 80; Postprocessing SW: SEMCAD, V1.8 Build 186

## Amy Twin Phone Template/Area Scan - Normal Body (15mm) (13x7x1):

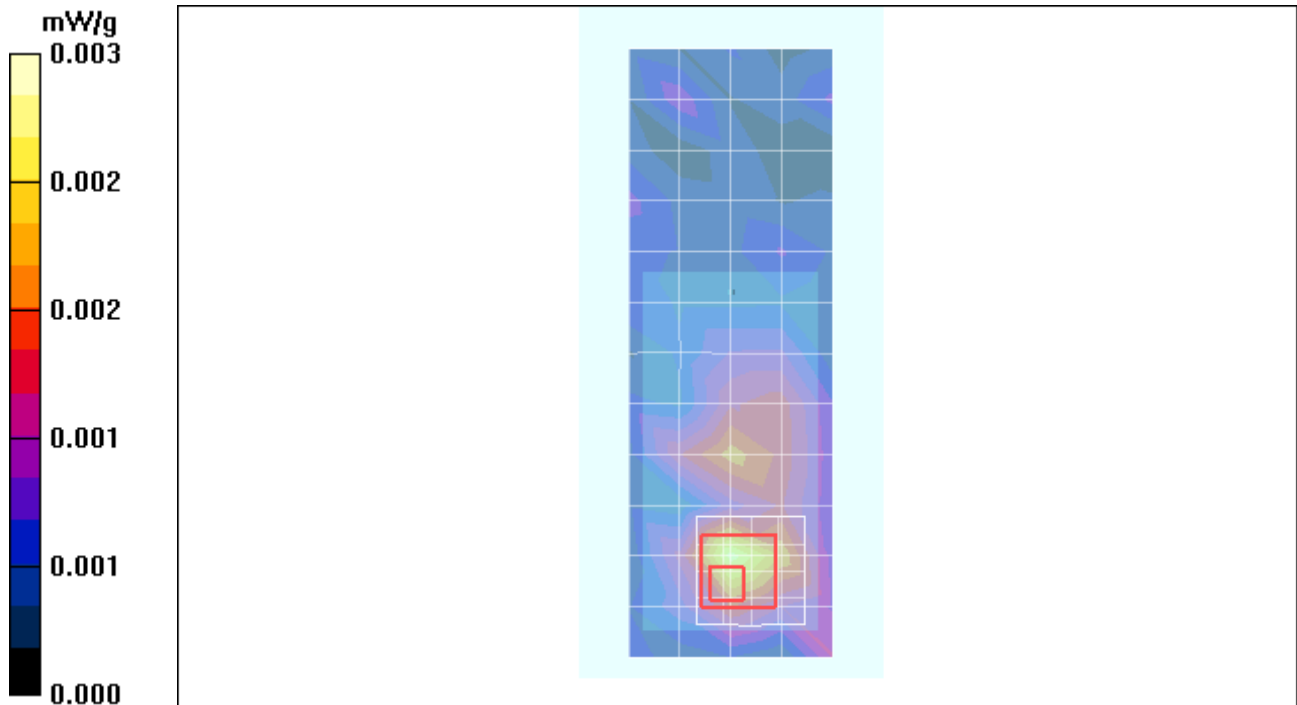
Measurement grid: dx=15mm, dy=15mm; Maximum value of SAR (measured) = 0.003 mW/g

## Amy Twin Phone Template/5x5x7 Zoom Scan (<=3GHz) (5x5x7)/Cube 0:

Measurement grid: dx=8mm, dy=8mm, dz=5mm

Reference Value = 1.06 V/m; Power Drift = -0.101 dB; Peak SAR (extrapolated) = 0.005 W/kg

**SAR(1 g) = 0.00252 mW/g; SAR(10 g) = 0.00152 mW/g**



**Appendix 4**  
**Probe Calibration Certificate**



Accredited by the Swiss Accreditation Service (SAS)  
The Swiss Accreditation Service is one of the signatories to the EA  
Multilateral Agreement for the recognition of calibration certificates

Accreditation No.: **SCS 108**

Client **Motorola MDb**

Certificate No: **ET3-1524\_Feb09**

## CALIBRATION CERTIFICATE

Object **ET3DV6 - SN:1524**

Calibration procedure(s) **QA CAL-01.v6 and QA CAL-23.v3  
Calibration procedure for dosimetric E-field probes**

Calibration date: **February 12, 2009**

Condition of the calibrated item **In Tolerance**

This calibration certificate documents the traceability to national standards, which realize the physical units of measurements (SI).  
The measurements and the uncertainties with confidence probability are given on the following pages and are part of the certificate.

All calibrations have been conducted in the closed laboratory facility: environment temperature ( $22 \pm 3$ )°C and humidity < 70%.

Calibration Equipment used (M&TE critical for calibration)

Primary Standards	ID #	Cal Date (Certificate No.)	Scheduled Calibration
Power meter E4419B	GB41293874	1-Apr-08 (No. 217-00788)	Apr-09
Power sensor E4412A	MY41495277	1-Apr-08 (No. 217-00788)	Apr-09
Power sensor E4412A	MY41498087	1-Apr-08 (No. 217-00788)	Apr-09
Reference 3 dB Attenuator	SN: S5054 (3c)	1-Jul-08 (No. 217-00865)	Jul-09
Reference 20 dB Attenuator	SN: S5086 (20b)	31-Mar-08 (No. 217-00787)	Apr-09
Reference 30 dB Attenuator	SN: S5129 (30b)	1-Jul-08 (No. 217-00866)	Jul-09
Reference Probe ES3DV2	SN: 3013	2-Jan-09 (No. ES3-3013_Jan09)	Jan-10
DAE4	SN: 660	9-Sep-08 (No. DAE4-660_Sep08)	Sep-09

Secondary Standards	ID #	Check Date (in house)	Scheduled Check
RF generator HP 8648C	US3642U01700	4-Aug-99 (in house check Oct-07)	In house check: Oct-09
Network Analyzer HP 8753E	US37390585	18-Oct-01 (in house check Oct-08)	In house check: Oct-09

	Name	Function	Signature
Calibrated by:	Katja Pokovic	Technical Manager	
Approved by:	Niels Kuster	Quality Manager	

Issued: February 12, 2009

This calibration certificate shall not be reproduced except in full without written approval of the laboratory.



Accredited by the Swiss Accreditation Service (SAS)

Accreditation No.: **SCS 108**

The Swiss Accreditation Service is one of the signatories to the EA Multilateral Agreement for the recognition of calibration certificates

### Glossary:

TSL	tissue simulating liquid
NORM <sub>x,y,z</sub>	sensitivity in free space
ConvF	sensitivity in TSL / NORM <sub>x,y,z</sub>
DCP	diode compression point
Polarization $\varphi$	$\varphi$ rotation around probe axis
Polarization $\vartheta$	$\vartheta$ rotation around an axis that is in the plane normal to probe axis (at measurement center), i.e., $\vartheta = 0$ is normal to probe axis

### Calibration is Performed According to the Following Standards:

- IEEE Std 1528-2003, "IEEE Recommended Practice for Determining the Peak Spatial-Averaged Specific Absorption Rate (SAR) in the Human Head from Wireless Communications Devices: Measurement Techniques", December 2003
- IEC 62209-1, "Procedure to measure the Specific Absorption Rate (SAR) for hand-held devices used in close proximity to the ear (frequency range of 300 MHz to 3 GHz)", February 2005

### Methods Applied and Interpretation of Parameters:

- NORM<sub>x,y,z</sub>**: Assessed for E-field polarization  $\vartheta = 0$  ( $f \leq 900$  MHz in TEM-cell;  $f > 1800$  MHz: R22 waveguide). NORM<sub>x,y,z</sub> are only intermediate values, i.e., the uncertainties of NORM<sub>x,y,z</sub> does not effect the E<sup>2</sup>-field uncertainty inside TSL (see below ConvF).
- NORM(f)<sub>x,y,z</sub>** = NORM<sub>x,y,z</sub> \* frequency\_response (see Frequency Response Chart). This linearization is implemented in DASY4 software versions later than 4.2. The uncertainty of the frequency response is included in the stated uncertainty of ConvF.
- DCP<sub>x,y,z</sub>**: DCP are numerical linearization parameters assessed based on the data of power sweep (no uncertainty required). DCP does not depend on frequency nor media.
- ConvF and Boundary Effect Parameters**: Assessed in flat phantom using E-field (or Temperature Transfer Standard for  $f \leq 800$  MHz) and inside waveguide using analytical field distributions based on power measurements for  $f > 800$  MHz. The same setups are used for assessment of the parameters applied for boundary compensation (alpha, depth) of which typical uncertainty values are given. These parameters are used in DASY4 software to improve probe accuracy close to the boundary. The sensitivity in TSL corresponds to NORM<sub>x,y,z</sub> \* ConvF whereby the uncertainty corresponds to that given for ConvF. A frequency dependent ConvF is used in DASY version 4.4 and higher which allows extending the validity from  $\pm 50$  MHz to  $\pm 100$  MHz.
- Spherical isotropy (3D deviation from isotropy)**: in a field of low gradients realized using a flat phantom exposed by a patch antenna.
- Sensor Offset**: The sensor offset corresponds to the offset of virtual measurement center from the probe tip (on probe axis). No tolerance required.

# Probe ET3DV6

## SN:1524

Manufactured:	March 21, 2000
Last calibrated:	May 31, 2007
Recalibrated:	February 12, 2009

Calibrated for DASY Systems

(Note: non-compatible with DASY2 system!)

## DASY - Parameters of Probe: ET3DV6 SN:1524

Sensitivity in Free Space <sup>A</sup>			Diode Compression <sup>B</sup>	
NormX	2.16 ± 10.1%	μV/(V/m) <sup>2</sup>	DCP X	93 mV
NormY	2.44 ± 10.1%	μV/(V/m) <sup>2</sup>	DCP Y	91 mV
NormZ	2.36 ± 10.1%	μV/(V/m) <sup>2</sup>	DCP Z	90 mV

### Sensitivity in Tissue Simulating Liquid (Conversion Factors)

Please see Page 8.

### Boundary Effect

TSL	900 MHz	Typical SAR gradient: 5 % per mm		
	Sensor Center to Phantom Surface Distance		3.7 mm	4.7 mm
	SAR <sub>be</sub> [%]	Without Correction Algorithm	11.5	7.1
	SAR <sub>be</sub> [%]	With Correction Algorithm	0.9	0.6
TSL	1810 MHz	Typical SAR gradient: 10 % per mm		
	Sensor Center to Phantom Surface Distance		3.7 mm	4.7 mm
	SAR <sub>be</sub> [%]	Without Correction Algorithm	10.6	5.9
	SAR <sub>be</sub> [%]	With Correction Algorithm	0.8	0.5

### Sensor Offset

Probe Tip to Sensor Center **2.7 mm**

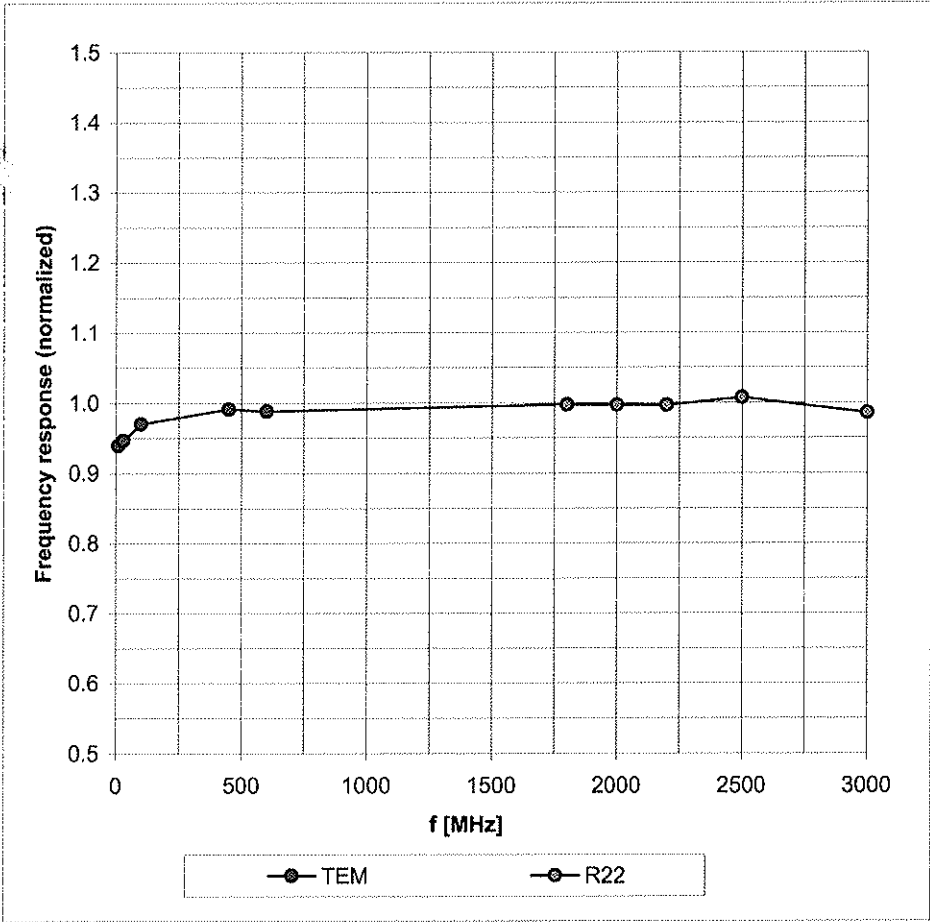
The reported uncertainty of measurement is stated as the standard uncertainty of measurement multiplied by the coverage factor k=2, which for a normal distribution corresponds to a coverage probability of approximately 95%.

<sup>A</sup> The uncertainties of NormX,Y,Z do not affect the E<sup>2</sup>-field uncertainty inside TSL (see Page 8).

<sup>B</sup> Numerical linearization parameter: uncertainty not required.

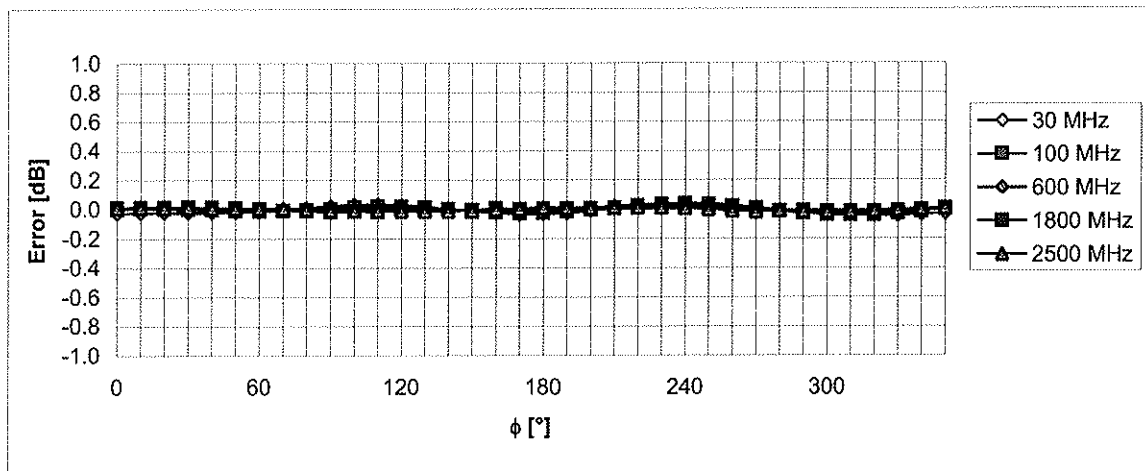
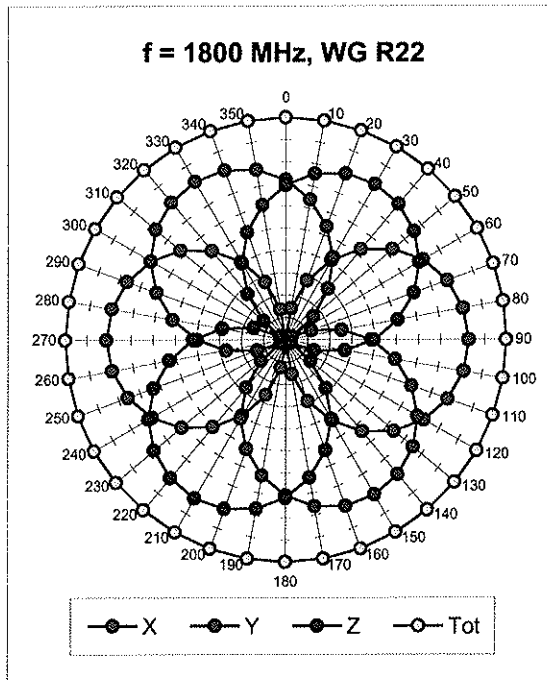
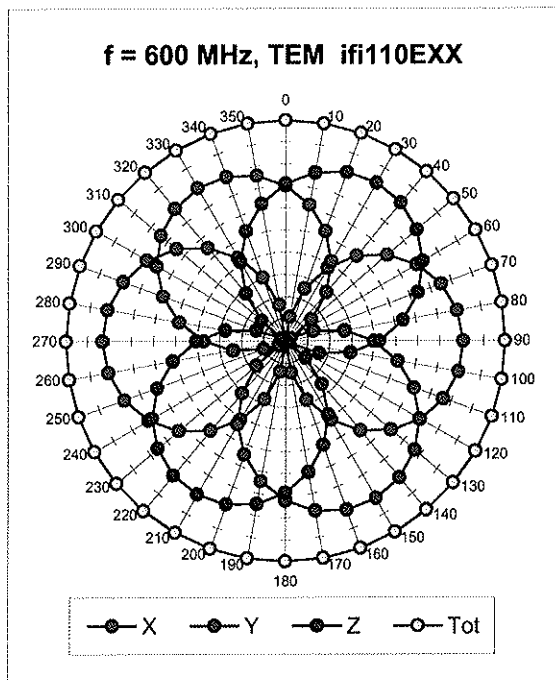
# Frequency Response of E-Field

(TEM-Cell:ifi110 EXX, Waveguide: R22)



Uncertainty of Frequency Response of E-field:  $\pm 6.3\%$  (k=2)

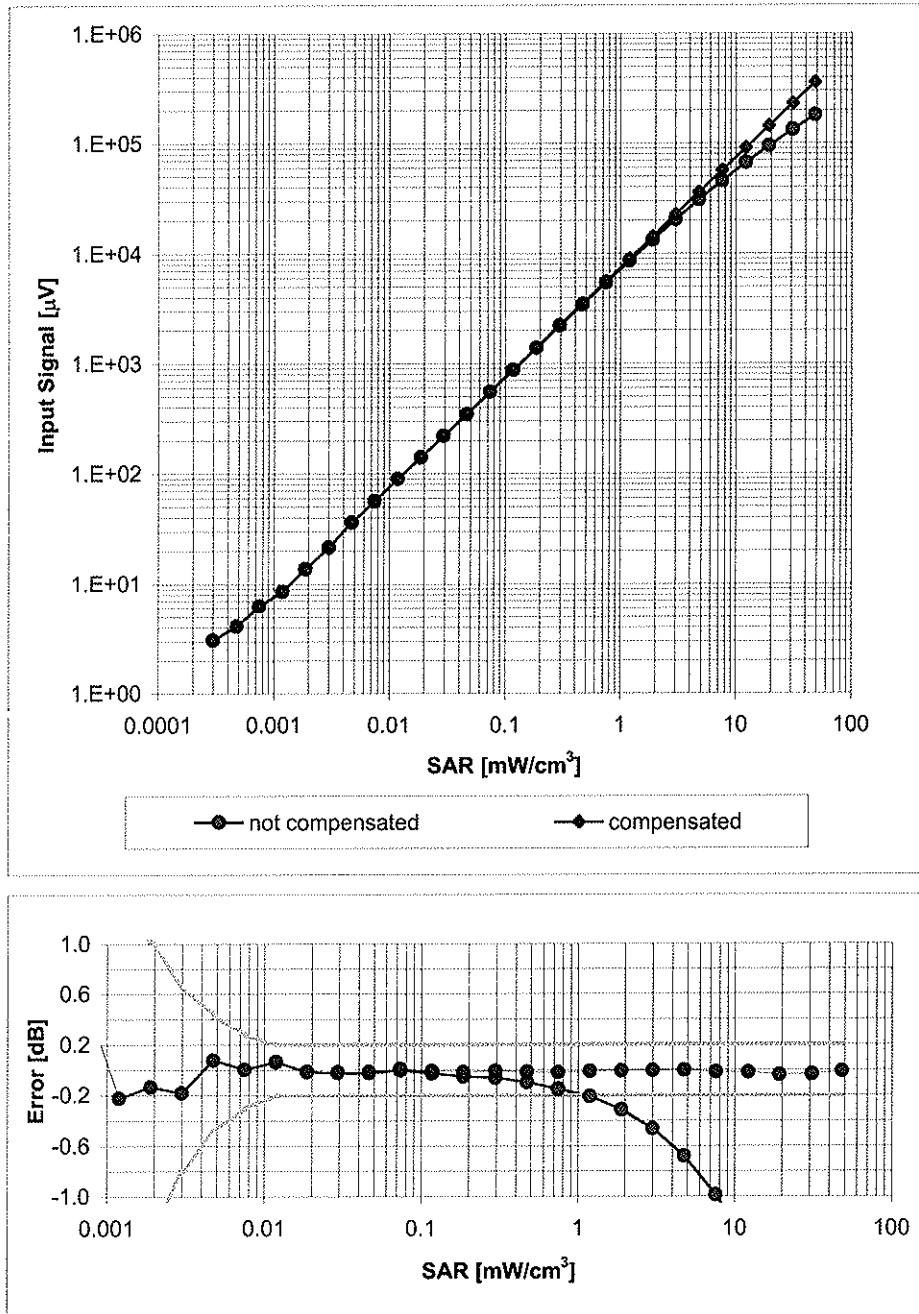
### Receiving Pattern ( $\phi$ ), $\vartheta = 0^\circ$



Uncertainty of Axial Isotropy Assessment:  $\pm 0.5\%$  ( $k=2$ )

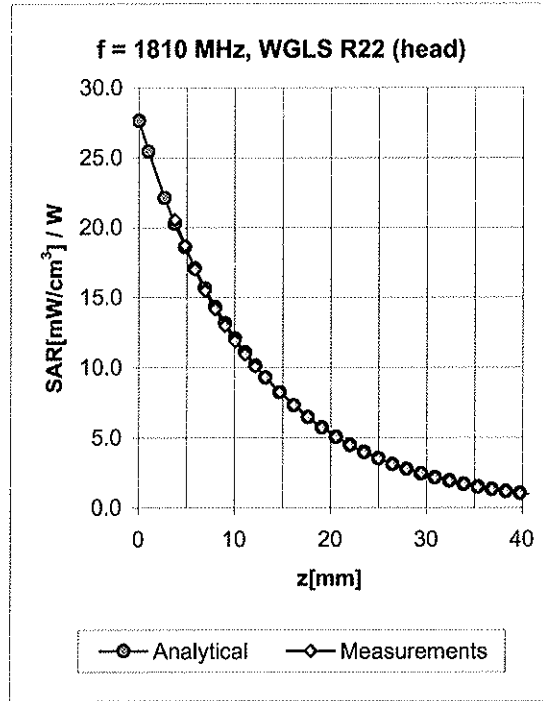
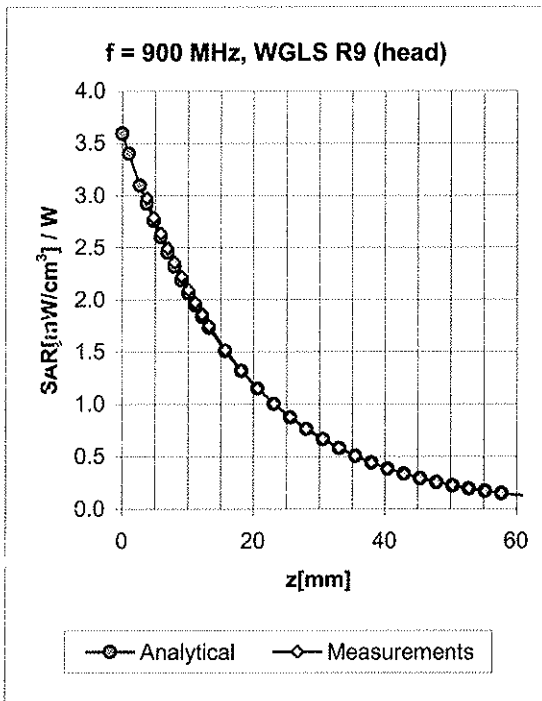
# Dynamic Range $f(\text{SAR}_{\text{head}})$

(Waveguide R22,  $f = 1800 \text{ MHz}$ )



Uncertainty of Linearity Assessment:  $\pm 0.6\%$  ( $k=2$ )

## Conversion Factor Assessment

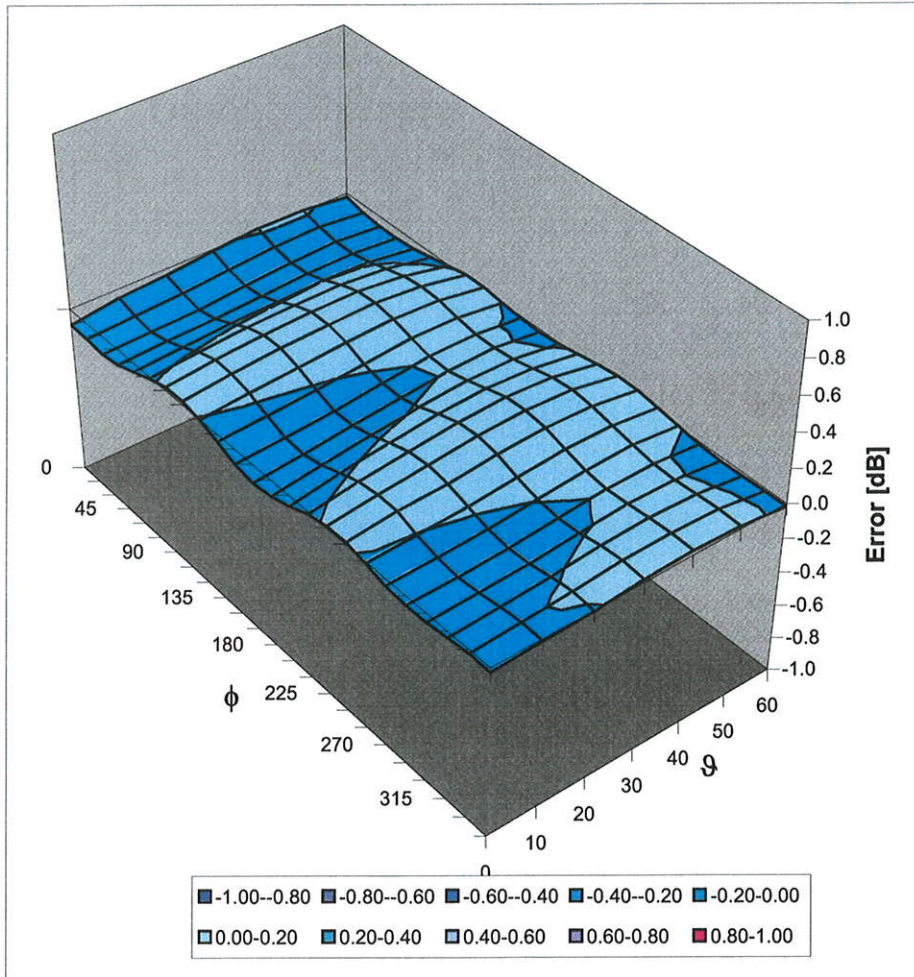


f [MHz]	Validity [MHz] <sup>c</sup>	TSL	Permittivity	Conductivity	Alpha	Depth	ConvF Uncertainty
900	± 50 / ± 100	Head	41.5 ± 5%	0.97 ± 5%	0.41	2.41	5.23 ± 11.0% (k=2)
1810	± 50 / ± 100	Head	40.0 ± 5%	1.40 ± 5%	0.61	2.40	4.43 ± 11.0% (k=2)
1950	± 50 / ± 100	Head	40.0 ± 5%	1.40 ± 5%	0.81	2.03	4.24 ± 11.0% (k=2)
2450	± 50 / ± 100	Head	39.2 ± 5%	1.80 ± 5%	0.99	1.65	3.89 ± 11.0% (k=2)
900	± 50 / ± 100	Body	55.0 ± 5%	1.05 ± 5%	0.41	2.62	5.14 ± 11.0% (k=2)
1810	± 50 / ± 100	Body	53.3 ± 5%	1.52 ± 5%	0.90	2.02	4.03 ± 11.0% (k=2)
1950	± 50 / ± 100	Body	53.3 ± 5%	1.52 ± 5%	0.99	1.75	4.00 ± 11.0% (k=2)
2450	± 50 / ± 100	Body	52.7 ± 5%	1.95 ± 5%	0.99	1.30	3.40 ± 11.0% (k=2)

<sup>c</sup> The validity of ± 100 MHz only applies for DASY v4.4 and higher (see Page 2). The uncertainty is the RSS of the ConvF uncertainty at calibration frequency and the uncertainty for the indicated frequency band.

# Deviation from Isotropy in HSL

Error ( $\phi, \vartheta$ ),  $f = 900$  MHz



Uncertainty of Spherical Isotropy Assessment:  $\pm 2.6\%$  ( $k=2$ )

**Appendix 5**  
**Measurement Uncertainty Budget**

<i>a</i>	<i>b</i>	<i>c</i>	<i>d</i>	$e = f(d,k)$	<i>f</i>	<i>g</i>	$\frac{h = c \times f}{e}$	$\frac{i = c \times g}{e}$	<i>k</i>
<b>Uncertainty Component</b>	IEEE 1528 section	Tol. ( $\pm$ %)	Prob Dist	Div.	$c_i$ (1 g)	$c_i$ (10 g)	1 g $u_i$ ( $\pm$ %)	10 g $u_i$ ( $\pm$ %)	$v_i$
<b>Measurement System</b>									
Probe Calibration	E.2.1	5.9	N	1.00	1	1	5.9	5.9	$\infty$
Axial Isotropy	E.2.2	4.7	R	1.73	0.707	0.707	1.9	1.9	$\infty$
Hemispherical Isotropy	E.2.2	9.6	R	1.73	0.707	0.707	3.9	3.9	$\infty$
Boundary Effect	E.2.3	1.0	R	1.73	1	1	0.6	0.6	$\infty$
Linearity	E.2.4	4.7	R	1.73	1	1	2.7	2.7	$\infty$
System Detection Limits	E.2.5	1.0	R	1.73	1	1	0.6	0.6	$\infty$
Readout Electronics	E.2.6	0.3	N	1.00	1	1	0.3	0.3	$\infty$
Response Time	E.2.7	1.1	R	1.73	1	1	0.6	0.6	$\infty$
Integration Time	E.2.8	1.1	R	1.73	1	1	0.6	0.6	$\infty$
RF Ambient Conditions - Noise	E.6.1	3.0	R	1.73	1	1	1.7	1.7	$\infty$
RF Ambient Conditions - Reflections	E.6.1	0.0	R	1.73	1	1	0.0	0.0	$\infty$
Probe Positioner Mech. Tolerance	E.6.2	0.4	R	1.73	1	1	0.2	0.2	$\infty$
Probe Positioning w.r.t Phantom	E.6.3	1.4	R	1.73	1	1	0.8	0.8	$\infty$
Max. SAR Evaluation (ext., int., avg.)	E.5	3.4	R	1.73	1	1	2.0	2.0	$\infty$
<b>Test sample Related</b>									
Test Sample Positioning	E.4.2	3.2	N	1.00	1	1	3.2	3.2	29
Device Holder Uncertainty	E.4.1	4.0	N	1.00	1	1	4.0	4.0	8
SAR drift	6.6.2	5.0	R	1.73	1	1	2.9	2.9	$\infty$
<b>Phantom and Tissue Parameters</b>									
Phantom Uncertainty	E.3.1	4.0	R	1.73	1	1	2.3	2.3	$\infty$
Liquid Conductivity (target)	E.3.2	5.0	R	1.73	0.64	0.43	1.8	1.2	$\infty$
Liquid Conductivity (measurement)	E.3.3	3.3	N	1.00	0.64	0.43	2.1	1.4	$\infty$
Liquid Permittivity (target)	E.3.2	5.0	R	1.73	0.6	0.49	1.7	1.4	$\infty$
Liquid Permittivity (measurement)	E.3.3	1.9	N	1.00	0.6	0.49	1.1	0.9	$\infty$
<b>Combined Standard Uncertainty</b>			RSS				11.1	10.8	411
<b>Expanded Uncertainty (95% CONFIDENCE LEVEL)</b>			$k=2$				22.2	21.6	

## **Appendix 6**

### **Dipole Characterization Certificate**

# Certification of System Performance Check Targets

FCD-1806, rev-1

-Historical Data-

900 MHz	
Reference Target:	10.9 (W/kg)
Measurement Uncertainty (k=1):	9.0%
Measurement Period:	15April08 - 26March09
# of tests performed:	1,099
Grand Average:	11.19 (W/kg)
% Delta (Average - Reference Target)	2.7%
Is % Delta <= Expanded Measurement Uncertainty (k=2)?	Yes
Accept/Reject <u>Average</u> as new system performance check target?	ACCEPT
<u>Applies to Dipole SN's:</u> 55, 69, 77, 78, 79, 80, 91, 92, 93, 94, 95, 96, 97, 1d034, 1d035	

-New System Performance Check Targets- per WI-0396

(based on analysis of historical data)

Frequency	SAR Target (W/kg)	Permittivity Target +/- %	Conductivity (S/m) Target +/- %
900 MHz	11.19	41.5 +/- 5%	0.97 +/- 5%

-Approvals-

Submitted by:  Date:

Signed: 

Comments:

Approved by:  Date:

Signed: 

Comments:

# Certification of System Performance Check Targets

FCD-1806, rev-1

-Historical Data-

1800 MHz	
Reference Target:	38.4 (W/kg)
Measurement Uncertainty (k=1):	9.0%
Measurement Period:	15April08 - 26March09
# of tests performed:	929
Grand Average:	37.91 (W/kg)
% Delta (Average - Reference Target)	-1.3%
Is % Delta <= Expanded Measurement Uncertainty (k=2)?	Yes
Accept/Reject <u>Average</u> as new system performance check target?	ACCEPT
<u>Applies to Dipole SN's:</u> 246tr, 250tr, 251tr, 259tr, 263tr, 271tr, 272tr, 276tr, 277tr, 279tr, 280tr, 281tr, 283tr, 284tr, 2d128, 2d129	

-New System Performance Check Targets- per WI-0396

(based on analysis of historical data)

Frequency	SAR Target (W/kg)	Permittivity Target +/- %	Conductivity (S/m) Target +/- %
1800 MHz	37.91	40.0 +/- 5%	1.40 +/- 5%


-Approvals-

Submitted by:  Date:

Signed: 

Comments:

Approved by:  Date:

Signed: 

Comments:

# Certification of System Performance Check Targets

FCD-1806, rev-1

-Historical Data-

2450 MHz	
Reference Target:	52.4 (W/kg)
Measurement Uncertainty (k=1):	9.0%
Measurement Period:	15April08 - 26March09
# of tests performed:	150
Grand Average:	56.68 (W/kg)
% Delta (Average - Reference Target)	8.2%
Is % Delta <= Expanded Measurement Uncertainty (k=2)?	Yes
Accept/Reject <u>Average</u> as new system performance check target?	ACCEPT
<u>Applies to Dipole SN's:</u>	
740, 766, 767, 788, 789	

-New System Performance Check Targets- per WI-0396

(based on analysis of historical data)

Frequency	SAR Target (W/kg)	Permittivity Target +/- %	Conductivity (S/m) Target +/- %
2450 MHz	56.68	39.2 +/- 10%	1.80 +/- 5%

-Approvals-

Submitted by:  Date:

Signed: 

Comments:

Approved by:  Date:

Signed: 

Comments:

**END OF REPORT**