



MOTOROLA

Portable Cellular Phone SAR Test Report

Motorola Mobile Devices
Tests Requested By: 600 N. US Highway 45
 Libertyville, IL 60048
Test Report #: 22920-3F
Date of Report: May-19-2009
Date of Test: Mar-26-2009 through May-10-2009
FCC ID #: **IHDP56JX2**
Generic Name: N/A
 Motorola Mobile Devices Business Product Safety & Compliance Laboratory
Test Laboratory: 11th Floor, Hibrand Living Hall,
 215, Yanjae-Dong, Seocho-Gu, Seoul, 137-130,
 South Korea
 Jon Park
Report Author: Senior Staff Engineer

This laboratory is accredited to ISO/IEC 17025-2005 to perform the following tests:

Accreditation:



TESTING CERT #2518-03

Tests:
Electromagnetic Specific Absorption Rate

Procedures:
 IEC 62209-1
 RSS-102
 IEEE 1528 - 2003
 FCC OET Bulletin 65 (including Supplement C)
 Australian Communications Authority Radio
 Communications (Electromagnetic Radiation – Human
 Exposure) Standard 2003
 CENELEC EN 50360
 ARIB Std. T-56 (2002)

On the following products or types of products:

On the following products or types of products: Wireless Communications Devices (Examples): Two Way Radios; Portable Phones (including Cellular, Licensed Non-Broadcast and PCS); Low Frequency Readers; and Pagers

Statement of Compliance:

Motorola declares under its sole responsibility that the portable cellular telephone model to which this declaration relates, is in conformity with the appropriate General Population/Uncontrolled RF exposure standards, recommendations and guidelines (FCC 47 CFR §2.1093) as well as with CENELEC en50360:2001 and ANSI / IEEE C95.1. It also declares that the product was tested in accordance with IEEE 1528 / CENELEC EN62209-1 (2006), as well as other appropriate measurement standards, guidelines and recommended practices. Any deviations from these standards, guidelines and recommended practices are noted below:

(none)

©Motorola, Inc. 2008

This test report shall not be reproduced except in full, without written approval of the laboratory. The results and statements contained herein relate only to the items tested. The names of individuals involved may be mentioned only in connection with the statements or results from this report. Motorola encourages all feedback, both positive and negative, on this test report.

Exhibit 11: Class II Permissive Change SAR Test report - 22920-3F

Table of Contents

1. Introduction	3
2. Description of the Device Under Test	3
<i>2.1 Antenna description</i>	<i>3</i>
<i>2.2 Device description</i>	<i>3</i>
3. Test Equipment Used	4
<i>3.1 Dosimetric System</i>	<i>4</i>
<i>3.2 Additional Equipment</i>	<i>4</i>
4. Electrical parameters of the tissue simulating liquid	5
5. System Accuracy Verification	6
6. Test Results	7
<i>6.1 Head Adjacent Test Results</i>	<i>8</i>
<i>6.2 Body Worn Test Results</i>	<i>14</i>
References	17
Appendix 1: SAR distribution comparison for the system accuracy verification	
Appendix 2: SAR distribution plots for Phantom Head Adjacent Use	
Appendix 3: SAR distribution plots for Body Worn Configuration	
Appendix 4: Probe Calibration Certificate	
Appendix 5: Measurement Uncertainty Budget	
Appendix 6: Dipole Characterization Certificate	

Exhibit 11: Class II Permissive Change SAR Test report - 22920-3F

1. Introduction

The Motorola Mobile Devices Business Product Safety Laboratory has performed measurements of the maximum potential exposure to the user of the portable cellular phone covered by this test report. The Specific Absorption Rate (SAR) of this product was measured. The portable cellular phone was tested in accordance with [1], [4] and [5]. The SAR values measured for the portable cellular phone are below the maximum recommended levels of 1.6 W/kg in a 1g average set in [3] and 2.0W/kg in a 10g average set in [2].

For ICNIRP (10g), the final SAR reading for this phone is 0.77 W/kg for head adjacent use and 0.88 W/kg for body worn use. For ANSI / IEEE C95.1 (1g), the final SAR reading for this phone is 1.06 W/kg for head adjacent use and 1.50 W/kg for body worn use. These measurements were performed using a Dasy4™ v4.7 system manufactured by Schmid & Partner Engineering AG (SPEAG), of Zurich Switzerland.

2. Description of the Device Under Test

2.1 Antenna description

Type	CDMA 800/1700 Band - Internal	
Location	Bottom Rear of Transceiver	
Dimensions	Length	56 mm
	Width	18 mm
Configuration	FICA	

Type	CDMA 1900 Band - Internal	
Location	Top Rear of Transceiver	
Dimensions	Length	39 mm
	Width	10 mm
Configuration	IFA	

2.2 Device description

Serial number	80747706						
Mode(s) of Operation	800 CDMA	1700 CDMA	1900 CDMA	800 EV-DO Rev. O	1700 EV-DO Rev. O	1900 EV-DO Rev. O	Bluetooth
Modulation Mode(s)	QPSK	QPSK	QPSK	QPSK	QPSK	QPSK	GMSK
Maximum Output Power Setting	25.00 dBm	25.00 dBm	25.00 dBm	25.00 dBm	25.00 dBm	25.00 dBm	8.00 dBm
Duty Cycle	1:1	1:1	1:1	1:1	1:1	1:1	1:1
Transmitting Frequency Range(s)	824.70 – 848.31 MHz	1711.2 - 1753.75 MHz	1851.25 – 1908.75 MHz	824.70 – 848.31 MHz	1711.2 - 1753.75 MHz	1851.25 – 1908.75 MHz	2400.0 - 2483.5 MHz
Production Unit or Identical Prototype (47 CFR §2.908)	Identical Prototype						
Device Category	Portable						
RF Exposure Limits	General Population / Uncontrolled						

Exhibit 11: Class II Permissive Change SAR Test report - 22920-3F

3. Test Equipment Used

3.1 Dosimetric System

The Motorola Mobile Devices Business Product Safety & Compliance Laboratory utilizes a Dosimetric Assessment System (Dasy4™ v4.7) manufactured by Schmid & Partner Engineering AG (SPEAG™), of Zurich Switzerland. All the SAR measurements are taken within a shielded enclosure. The overall 10g RSS uncertainty of the measurement system is $\pm 10.8\%$ (K=1) with an expanded uncertainty of $\pm 21.6\%$ (K=2). The overall 1g RSS uncertainty of the measurement system is $\pm 11.1\%$ (K=1) with an expanded uncertainty of $\pm 22.2\%$ (K=2). The measurement uncertainty budget is given in Appendix 5. Per IEEE 1528, this uncertainty budget is applicable to the SAR range of 0.4W/kg to 10W/kg.

The list of calibrated equipment used for the measurements is shown in the following table.

Description	Serial Number	Cal Due Date
DASY4™ DAE3	434	Jan-28-2009
E-Field Probe ES3DV3	3183	Mar-17-2009
S.A.M. Phantom used for 800/900 MHz	TP-1131	
S.A.M. Phantom used for 1800/1900/2450 MHz	TP-1250	
Dipole Validation Kit, DV900V2	91	Apr-01-2010
Dipole Validation Kit, DV1800V2	272tr	Apr-22-2009, Apr-01-2010
Dipole Validation Kit, DV2450V2	740	Apr-01-2010

3.2 Additional Equipment

Description	Serial Number	Cal Due Date
Signal Generator HP8648C	3847A04810	Jun-13-2009
Power Meter E4419B	GB39510961	Jan-24-2010
Power Sensor #1 - E9301A	US39210915	Jul-07-2009
Power Sensor #2 - E9301A	US39210916	Jul-07-2009
Signal Generator HP8648C	3847A04982	Jun-13-2009
Power Meter E4419B	GB39511084	Jun-17-2009
Power Sensor #1 - E9301A	US39210929	Jun-02-2009
Power Sensor #2 - E9301A	US39210930	Jun-02-2009
Network Analyzer HP8753ES	US39171846	Jul-05-2009
Dielectric Probe Kit HP85070B	US99360070	

Exhibit 11: Class II Permissive Change SAR Test report - 22920-3F

4. Electrical parameters of the tissue simulating liquid

Prior to conducting SAR measurements, the relative permittivity, ϵ_r , and the conductivity, σ , of the tissue simulating liquids were measured with a HP85070 Dielectric Probe Kit. These values, along with the temperature of the simulated tissue are shown in the table below. The recommended limits for permittivity and conductivity are also shown. A mass density of $\rho=1\text{g/cm}^3$ was entered into the system in all the cases. It can be seen that the measured parameters are within tolerance of the recommended limits specified in [1] and [5].

f (MHz)	Tissue type	Limits / Measured	Dielectric Parameters			
			ϵ_r	σ (S/m)	Temp (°C)	
835	Head	Measured, Apr-30-2009	42.2	0.9	20.9	
		Measured, May-8-2009	41.6	0.92	19.6	
		Recommended Limits	41.5 \pm 5%	0.90 \pm 5%	18-25	
	Body	Measured, Mar-26-2009	56.2	0.99	19.0	
		Recommended Limits	55.2 \pm 5%	0.97 \pm 5%	18-25	
		Measured, May-10-2009	38.6	1.38	19.0	
1730	Head	Recommended Limits	40.1 \pm 5%	1.36 \pm 5%	18-25	
		Body	Measured, May-10-2009	51.2	1.53	18.8
			Recommended Limits	53.5 \pm 5%	1.48 \pm 5%	18-25
	1880		Head	Measured, Apr-29-2009	40.1	1.47
		Measured, Apr-30-2009		38.5	1.47	19.8
		Recommended Limits		40.0 \pm 5%	1.40 \pm 5%	18-25
Body		Measured, Apr-27-2009	51.4	1.58	19.0	
		Recommended Limits	53.3 \pm 5%	1.52 \pm 5%	18-25	
		2450	Body	Measured, Apr-28-2009	53.6	2.01
Recommended Limits	52.7 \pm 10%			1.95 \pm 5%	18-25	

The list of ingredients and the percent composition used for the tissue simulates are indicated in the table below.

Ingredient	835MHz / 900 MHz Head	835MHz / 900 MHz Body	1800MHz / 1900 MHz Head	1800 MHz / 1900 MHz Body	2450MHz Head	2450 MHz Body
Sugar	57	44.9	--	--	--	--
DGBE	--	--	47	30.8	--	30
Diacetin	--	--	--	--	51	--
Water	40.45	53.06	52.62	68.8	48.75	70
Salt	1.45	0.94	0.38	0.4	0.15	--
HEC	1	1	--	--	--	--
Bact.	0.1	0.1	--	--	0.1	--

Exhibit 11: Class II Permissive Change SAR Test report - 22920-3F

5. System Accuracy Verification

A system accuracy verification of the DASY4™ was performed using the measurement equipment listed in Section 3.1. The daily system accuracy verification occurs within the flat section of the SAM phantom.

A SAR measurement was performed to verify the measured SAR was within $\pm 10\%$ from the target SAR indicated in Appendix 6. These frequencies are within $\pm 10\%$ of the compliance test mid-band frequency as required in [1] and [5]. The test was conducted on the same days as the measurement of the DUT. Recommended limits for permittivity and conductivity, specified in [5], are shown in the table below. The obtained results from the system accuracy verification are also displayed in the table below. SAR values are normalized to 1W forward power delivered to the dipole. It is seen that the system is operating within its specification, as the results are within acceptable tolerance of the reference values. The distributions of SAR compare well with those of the reference measurements (see Appendix 1). The tissue stimulant depth was verified to be 15.0cm ± 0.5 cm. Z-axis scans showing the SAR penetration are also included in Appendix 1.

f (MHz)	Description	SAR (W/kg), 1gram	Dielectric Parameters		Ambient Temp (°C)	Tissue Temp (°C)
			ϵ_r	σ (S/m)		
900	Measured, Mar-26-2009	11.05	40.7	0.98	19.8	20.7
	Recommend Limits	11.29	41.5 $\pm 5\%$	0.97 $\pm 5\%$	18-25	18-25
	Measured, Apr-30-2009	10.9	41.4	0.97	20.3	20.8
	Measured, May-8-2009	11.33	40.8	0.98	19.9	20.6
	Recommended Limits	11.19	41.5 $\pm 5\%$	0.97 $\pm 5\%$	18-25	18-25
1800	Measured, Apr-27-2009	37.98	40.4	1.37	20.1	19.4
	Measured, Apr-29-2009	37.35	40.4	1.37	20.5	19.5
	Measured, Apr-30-2009	38.70	38.9	1.38	20.5	19.6
	Measured, May-10-2009	40.28	38.3	1.45	19.7	19.0
	Recommended Limits	37.91	40.0 $\pm 5\%$	1.4 $\pm 5\%$	18-25	18-25
2450	Measured, Apr-28-2009	55	39.2	1.85	20.6	20.0
	Recommended Limits	56.68	39.2 $\pm 10\%$	1.80 $\pm 5\%$	18-25	18-25

The following probe conversion factors were used on the E-Field probe(s) used for the system accuracy verification measurements:

Description	Serial Number	f (MHz)	Conversion Factor	Cal Cert pg #
E-Field Probe ES3DV3	SN3183	900	5.90	8 of 9
		1810	5.20	8 of 9
		2450	4.60	8 of 9

Exhibit 11: Class II Permissive Change SAR Test report - 22920-3F

6. Test Results

The test sample was operated using an actual transmission through a base station simulator. The base station simulator was setup to the proper channel, transmitter power level and transmit mode of operation. The phone was tested in the configurations stipulated in [1], [4] and [5]. The phone was positioned into these configurations using the device holder supplied with the DASY4™ SAR measurement system. The measured dielectric constant of the material used for the device holder is less than 2.9 and the loss tangent is less than 0.02 ($\pm 30\%$) at 850MHz. The default settings for the “coarse” and “cube” scans were chosen and used for measurements. The grid spacing of the course scan was set to 15 mm as shown in the SAR plots included in Appendix 2 and 3. Please refer to the DASY4™ manual for additional information on SAR scanning procedures and algorithms used.

The Cellular Phone model covered by this report has the following battery options:
Model SNN5834A - 780 mAH Battery

The battery with the highest capacity is the SNN5834A. This battery was used to do all of the SAR testing. The phone was placed in the SAR measurement system with a fully charged battery.

Per the “SAR Measurement Procedures for 3G Devices” released in October, 2007, RC1, RC3 and RC3 (FCH + SCH) CDMA modes, EVDO Rev O, EVDO Rev A were considered. The conducted power measurements (per steps 3, 4 & 10 of section 4.4.5.2 of 3GPP2 C.5.011 / TIA -98-E) for each mode are shown in the table below.

Conducted power (dBm) for CDMA modes						
	Channel	RC1		RC3		RC3 (FCH + SCH)
		SO2	SO55	SO2	SO55	
CDMA 800	1013	24.95	24.91	24.93	24.88	Per Motorola designs, the maximum power, when in a mode that allows supplemental channels, will always be less than the RC3/RC1 maximum conducted power limit.
	384	24.91	24.91	24.91	24.85	
	777	24.80	24.83	24.87	24.84	
CDMA 1700	25	24.92	24.97	25.01	24.95	
	450	24.86	24.80	24.74	24.88	
	875	24.78	24.77	24.71	24.92	
CDMA 1900	25	25.04	25.03	24.96	24.93	
	600	24.84	24.83	24.89	24.88	
	1175	24.90	24.92	24.93	24.93	

Conducted power (dBm) for EVDO modes				
	Channel	Rev 0		Rev A
		FTAP 307.2k	RTAP 153.6k	Subtype 2
CDMA 800	1013	24.73	24.69	N/A
	384	24.66	24.72	N/A
	777	24.73	24.79	N/A
CDMA 1900	25	24.84	24.87	N/A
	600	24.88	24.84	N/A
	1175	24.70	24.79	N/A
CDMA 1700	25	24.95	24.97	N/A
	450	24.74	24.85	N/A
	875	24.78	24.87	N/A

Exhibit 11: Class II Permissive Change SAR Test report - 22920-3F

6.1 Head Adjacent Test Results

The SAR results shown in tables 1 through 8 are maximum SAR values averaged over 1 gram of phantom tissue, to demonstrate compliance to [3] and also over 10 grams of phantom tissue, to demonstrate compliance to the [6]. Also shown are the measured conducted output power levels for the CDMA RC3/SO55 mode, the temperature of the simulated tissue after the test, the measured drift and the extrapolated SAR. The exact method of extrapolation is $New\ SAR = Old\ SAR * 10^{(-drift/10)}$. The SAR reported at the end of the measurement process by the DASY4™ measurement system can be scaled up by the measured drift to determine the SAR at the beginning of the measurement process. This is the most conservative SAR because it corresponds to the average output power at the beginning of the SAR test. This extrapolation has been done because when the DUT is operating properly it may exhibit a slump in radiated power and SAR over time. This is verified by measuring the SAR drift after the test. Note that 800MHz digital mode SAR measurements were performed in accordance with [4].

The left head and right head SAR contour distributions are similar. Because of this similarity, the cheek/touch and 15° tilt test conditions with the highest SAR values in each band are indicated as bold numbers in the following tables and are included in Appendix 2. All other test conditions measured lower SAR values than those included in Appendix 2.

The SAR measurements were performed using the SAM phantoms listed in section 3.1. Since the same phantoms and simulated tissue were used for the system accuracy verification and the device SAR measurements, the Z-axis scans included in Appendix 1 are applicable for verification of simulated tissue depth to be 15.0cm ±0.5cm.

The following probe conversion factors were used on the E-Field probe(s) used for the head adjacent measurements:

Description	Serial Number	f (MHz)	Conversion Factor	Cal Cert pg #
E-Field Probe ES3DV3	SN3183	900	5.90	8 of 9
		1810	5.20	8 of 9

Left Head Cheek Position, Slider Extended								
f (MHz)	Description	Conducted Output Power (dBm)	Temp (C)	Drift (dB)	10 g SAR value		1 g SAR value	
					Measured (W/kg)	Extrapolated (W/kg)	Measured (W/kg)	Extrapolated (W/kg)
CDMA 800	Channel 1013	24.88	20.8	-0.151	0.591	0.61	0.804	0.83
	Channel 384	24.85	20.9	-0.315	0.718	0.77	0.979	1.05
	Channel 777	24.84	20.8	-0.115	0.631	0.65	0.873	0.90
CDMA 1700	Channel 25	24.95						
	Channel 450	24.88	19.0	-0.411	0.306	0.34	0.497	0.55
	Channel 875	24.92						
CDMA 1900	Channel 25	24.93						
	Channel 600	24.88	19.8	0.0459	0.0513	0.05	0.0847	0.08
	Channel 1175	24.93						

Table 1: SAR measurement results at the highest possible output power, measured in a head cheek position against the ICNIRP and ANSI SAR Limit.

Exhibit 11: Class II Permissive Change SAR Test report - 22920-3F

Left Head Cheek Position, Slider Retracted								
<i>f</i> (MHz)	Description	Conducted Output Power (dBm)	Temp (C)	Drift (dB)	<i>10 g SAR value</i>		<i>1 g SAR value</i>	
					Measured (W/kg)	Extrapolated (W/kg)	Measured (W/kg)	Extrapolated (W/kg)
CDMA 800	Channel 1013	24.88						
	Channel 384	24.85	19.6	0.0238	0.439	0.44	0.613	0.61
	Channel 777	24.84						
CDMA 1700	Channel 25	24.95						
	Channel 450	24.88	19.0	-0.306	0.138	0.15	0.231	0.25
	Channel 875	24.92						
CDMA 1900	Channel 25	24.93						
	Channel 600	24.88	19.7	-0.169	0.238	0.25	0.417	0.43
	Channel 1175	24.93						

Table 2: SAR measurement results at the highest possible output power, measured in a head cheek position against the ICNIRP and ANSI SAR Limit.

Right Head Cheek Position, Slider Extended								
<i>f</i> (MHz)	Description	Conducted Output Power (dBm)	Temp (C)	Drift (dB)	<i>10 g SAR value</i>		<i>1 g SAR value</i>	
					Measured (W/kg)	Extrapolated (W/kg)	Measured (W/kg)	Extrapolated (W/kg)
CDMA 800	Channel 1013	24.88	20.6	0.00705	0.58	0.58	0.79	0.79
	Channel 384	24.85	20.8	-0.077	0.706	0.72	0.96	0.98
	Channel 777	24.84	20.8	-0.0576	0.661	0.67	0.905	0.92
CDMA 1700	Channel 25	24.95						
	Channel 450	24.88	19.0	-0.141	0.251	0.26	0.379	0.39
	Channel 875	24.92						
CDMA 1900	Channel 25	24.93						
	Channel 600	24.88	20.1	0.33	0.0461	0.05	0.0708	0.07
	Channel 1175	24.93						

Table 3: SAR measurement results at the highest possible output power, measured in a head cheek position against the ICNIRP and ANSI SAR Limit.

Exhibit 11: Class II Permissive Change SAR Test report - 22920-3F

Right Head Cheek Position, Slider Retracted								
<i>f</i> (MHz)	Description	Conducted Output Power (dBm)	Temp (C)	Drift (dB)	<i>10 g SAR value</i>		<i>1 g SAR value</i>	
					Measured (W/kg)	Extrapolated (W/kg)	Measured (W/kg)	Extrapolated (W/kg)
CDMA 800	Channel 1013	24.88						
	Channel 384	24.85	20.0	0.152	0.423	0.42	0.611	0.61
	Channel 777	24.84						
CDMA 1700	Channel 25	24.95						
	Channel 450	24.88	19.0	-0.334	0.142	0.15	0.239	0.26
	Channel 875	24.92						
CDMA 1900	Channel 25	24.93						
	Channel 600	24.88	20.1	-0.161	0.322	0.33	0.583	0.61
	Channel 1175	24.93						

Table 4: SAR measurement results at the highest possible output power, measured in a head cheek position against the ICNIRP and ANSI SAR Limit.

Left Head 15° Tilt Position, Slider Extended								
<i>f</i> (MHz)	Description	Conducted Output Power (dBm)	Temp (C)	Drift (dB)	<i>10 g SAR value</i>		<i>1 g SAR value</i>	
					Measured (W/kg)	Extrapolated (W/kg)	Measured (W/kg)	Extrapolated (W/kg)
CDMA 800	Channel 1013	24.88						
	Channel 384	24.85	20.8	-0.0687	0.462	0.47	0.597	0.61
	Channel 777	24.84						
CDMA 1700	Channel 25	24.95						
	Channel 450	24.88	19.0	0.0387	0.194	0.19	0.0387	0.33
	Channel 875	24.92						
CDMA 1900	Channel 25	24.93						
	Channel 600	24.88	19.8	0.155	0.0571	0.06	0.1	0.10
	Channel 1175	24.93						

Table 5: SAR measurement results at the highest possible output power, measured in a head 15° Tilt position against the ICNIRP and ANSI SAR Limit.

Exhibit 11: Class II Permissive Change SAR Test report - 22920-3F

Left Head 15° Tilt Position, Slider Retracted								
<i>f</i> (MHz)	Description	Conducted Output Power (dBm)	Temp (C)	Drift (dB)	<i>10 g SAR value</i>		<i>1 g SAR value</i>	
					Measured (W/kg)	Extrapolated (W/kg)	Measured (W/kg)	Extrapolated (W/kg)
CDMA 800	Channel 1013	24.88						
	Channel 384	24.85	19.4	0.0153	0.358	0.36	0.49	0.49
	Channel 777	24.84						
CDMA 1700	Channel 25	24.95						
	Channel 450	24.88	19.0	-0.0169	0.273	0.27	0.485	0.49
	Channel 875	24.92						
CDMA 1900	Channel 25	24.93						
	Channel 600	24.88	19.9	-0.126	0.324	0.33	0.579	0.60
	Channel 1175	24.93						

Table 6: SAR measurement results at the highest possible output power, measured in a head 15° Tilt position against the ICNIRP and ANSI SAR Limit.

Right Head 15° Tilt Position, Slider Extended								
<i>f</i> (MHz)	Description	Conducted Output Power (dBm)	Temp (C)	Drift (dB)	<i>10 g SAR value</i>		<i>1 g SAR value</i>	
					Measured (W/kg)	Extrapolated (W/kg)	Measured (W/kg)	Extrapolated (W/kg)
CDMA 800	Channel 1013	24.88						
	Channel 384	24.85	20.0	-0.124	0.459	0.47	0.595	0.61
	Channel 777	24.84						
CDMA 1700	Channel 25	24.95						
	Channel 450	24.88	19.0	0.0181	0.219	0.22	0.352	0.35
	Channel 875	24.92						
CDMA 1900	Channel 25	24.93						
	Channel 600	24.88	19.9	0.0227	0.0632	0.06	0.109	0.11
	Channel 1175	24.93						

Table 7: SAR measurement results at the highest possible output power, measured in a head 15° Tilt position against the ICNIRP and ANSI SAR Limit.

Exhibit 11: Class II Permissive Change SAR Test report - 22920-3F

Right Head 15° Tilt Position, Slider Retracted								
<i>f</i> (MHz)	Description	Conducted Output Power (dBm)	Temp (C)	Drift (dB)	<i>10 g SAR value</i>		<i>1 g SAR value</i>	
					Measured (W/kg)	Extrapolated (W/kg)	Measured (W/kg)	Extrapolated (W/kg)
CDMA 800	Channel 1013	24.88						
	Channel 384	24.85	20.0	0.0657	0.334	0.33	0.444	0.44
	Channel 777	24.84						
CDMA 1700	Channel 25	24.95						
	Channel 450	24.88	19.0	-0.0103	0.318	0.32	0.567	0.57
	Channel 875	24.92						
CDMA 1900	Channel 25	24.93						
	Channel 600	24.88	20.3	-0.171	0.405	0.42	0.764	0.79
	Channel 1175	24.93						

Table 8: SAR measurement results at the highest possible output power, measured in a head 15° Tilt position against the ICNIRP and ANSI SAR Limit.

Exhibit 11: Class II Permissive Change SAR Test report - 22920-3F

The below 835 MHz SAR results were corrected for the tissue permittivity that was measured above the nominal target. Corrections were performed using the data provided in FCC KDB 450824. No correction was made for conductivity, since the measured tissue value already represents a conservative result in the measured SAR.

<i>The noted Head position, Slider Extended on CDMA800MHz scaled SAR</i>								
<i>f</i> (MHz)	Description	Conducted Output Power (dBm)	Temp (C)	Drift (dB)	<i>10 g SAR value</i>		<i>1 g SAR value</i>	
					Measured (W/kg)	Extrapolated (W/kg)	Measured (W/kg)	Extrapolated (W/kg)
CDMA 800 <i>Left Cheek</i>	Channel 1013	24.88						
	Channel 384	24.85	20.9	-0.315	0.718	0.77	0.979	1.06
	Channel 777	24.84						
CDMA 800 <i>Left Tilt</i>	Channel 1013	24.88						
	Channel 384	24.85	20.8	-0.0687	0.462	0.47	0.597	0.62
	Channel 777	24.84						

<i>The noted Head position, Slider Retracted on CDMA800MHz scaled SAR</i>								
<i>f</i> (MHz)	Description	Conducted Output Power (dBm)	Temp (C)	Drift (dB)	<i>10 g SAR value</i>		<i>1 g SAR value</i>	
					Measured (W/kg)	Extrapolated (W/kg)	Measured (W/kg)	Extrapolated (W/kg)
CDMA 800 <i>Left Cheek</i>	Channel 1013	24.88						
	Channel 384	24.85	19.6	0.0238	0.439	0.44	0.613	0.62
	Channel 777	24.84						
CDMA 800 <i>Left Tilt</i>	Channel 1013	24.88						
	Channel 384	24.85	19.4	0.0153	0.358	0.36	0.49	0.49
	Channel 777	24.84						

The below 1880 MHz SAR results were corrected for the tissue permittivity that was measured above the nominal target. Corrections were performed using the data provided in FCC KDB 450824. No correction was made for conductivity, since the measured tissue value already represents a conservative result in the measured SAR.

<i>The noted Head position, Slider Retracted on CDMA1900 MHz scaled SAR</i>								
<i>f</i> (MHz)	Description	Conducted Output Power (dBm)	Temp (C)	Drift (dB)	<i>10 g SAR value</i>		<i>1 g SAR value</i>	
					Measured (W/kg)	Extrapolated (W/kg)	Measured (W/kg)	Extrapolated (W/kg)
CDMA 1900 <i>Right Cheek</i>	Channel 25	24.93						
	Channel 600	24.88	20.1	-0.161	0.322	0.33	0.583	0.61
	Channel 1175	24.93						
CDMA 1900 <i>Right Tilt</i>	Channel 25	24.93						
	Channel 600	24.88	20.3	-0.171	0.405	0.42	0.764	0.79
	Channel 1175	24.93						

Exhibit 11: Class II Permissive Change SAR Test report - 22920-3F

6.2 Body Worn Test Results

The SAR results shown in tables 9 through 11 are maximum SAR values averaged over 1 gram of phantom tissue, to demonstrate compliance to [3] and also over 10 grams of phantom tissue, to demonstrate compliance to the [6]. Also shown are the measured conducted output power levels for the CDMA RC3/SO55 mode, the temperature of the test facility during the test, the temperature of the tissue simulate after the test, the measured drift and the extrapolated SAR. The exact method of extrapolation is $\text{New SAR} = \text{Old SAR} * 10^{(-\text{drift}/10)}$. The SAR reported at the end of the measurement process by the DASY4™ measurement system can be scaled up by the measured drift to determine the SAR at the beginning of the measurement process. This is the most conservative SAR because it corresponds to the average output power at the beginning of the SAR test. This extrapolation has been done because when the DUT is operating properly it may exhibit a slump in radiated power and SAR over time. This is verified by measuring the SAR drift after the test. Note that 800MHz digital mode SAR measurements were performed in accordance with [4].

The test conditions that produced the highest SAR values in each band are indicated as bold numbers in the following tables and are included in Appendix 3. All other test conditions measured lower SAR values than those included in Appendix 3.

A “flat” phantom was for the body-worn tests. This “flat” phantom is made out of 1” thick natural High Density Polyethylene with a thickness at the bottom equal to 2.0mm. It measures 52.7cm(long) x 26.7cm(wide) x 21.2cm(tall). The measured dielectric constant of the material used is less than 2.3 and the loss tangent is less than 0.0046 all the way up to 2.184GHz.

The tissue stimulant depth was verified to be 15.0cm ±0.5cm. The same device holder described in section 6 was used for positioning the phone. The functional accessories were divided into two categories, the ones with metal components and the ones with non-metal components. For non-metallic component accessories, testing was performed on the accessory that displayed the closest proximity to the flat phantom. Each metallic component accessory, if any, was checked for uniqueness of metal component so that each is tested with the device. If multiple accessories shared an identical metal component, only the accessory that dictates the closest spacing to the body was tested. The cellular phone was tested with a headset connected to the device for all body-worn SAR measurements.

There are no Body-Worn Accessories available for this phone at the time of testing hence the device was tested per the supplement C testing guidelines for devices that do not have body worn accessories. A separation distance of 15mm between the device and the flat phantom was used for testing body-worn SAR. The device was tested with the front and back of the device facing the phantom.

The following probe conversion factors were used on the E-Field probe(s) used for the body worn measurements:

Description	Serial Number	f (MHz)	Conversion Factor	Cal Cert pg #
E-Field Probe ES3DV3	SN3183	900	5.86	8 of 9
		1810	4.87	8 of 9
		2450	4.11	8 of 9

Exhibit 11: Class II Permissive Change SAR Test report - 22920-3F

Body-Worn; Front of Phone 25 mm from Phantom								
<i>f</i> (MHz)	Description	Conducted Output Power (dBm)	Temp (C)	Drift (dB)	<i>10 g SAR value</i>		<i>1 g SAR value</i>	
					Measured (W/kg)	Extrapolated (W/kg)	Measured (W/kg)	Extrapolated (W/kg)
CDMA 800	Channel 1013	24.88						
	Channel 384	24.85	20.6	-0.0959	0.051	0.05	0.0704	0.07
	Channel 777	24.84						
CDMA 1700	Channel 25	24.95						
	Channel 450	24.88	19.0	-0.587	0.0163	0.02	0.024	0.03
	Channel 875	24.92						
CDMA 1900	Channel 25	24.93						
	Channel 600	24.88	19.0	-0.438	0.0452	0.05	0.0691	0.08
	Channel 1175	24.93						

Table 9: SAR measurement results at the highest possible output power, measured in a body-worn position against the ICNIRP and ANSI SAR Limit.

Body-Worn; Back of Phone 25 mm from Phantom								
<i>f</i> (MHz)	Description	Conducted Output Power (dBm)	Temp (C)	Drift (dB)	<i>10 g SAR value</i>		<i>1 g SAR value</i>	
					Measured (W/kg)	Extrapolated (W/kg)	Measured (W/kg)	Extrapolated (W/kg)
CDMA 800	Channel 1013	24.88						
	Channel 384	24.85	19.0	-0.152	0.331	0.34	0.471	0.49
	Channel 777	24.84						
CDMA 1700	Channel 25	24.95	18.8	-0.17	0.845	0.88	1.44	1.50
	Channel 450	24.88	19.0	-0.0091	0.743	0.74	1.26	1.26
	Channel 875	24.92	19.0	-0.042	0.817	0.82	1.38	1.38
CDMA 1900	Channel 25	24.93						
	Channel 600	24.88	19.0	-0.0105	0.129	0.13	0.208	0.21
	Channel 1175	24.93						
Bluetooth 2450 MHz	Channel 39	7.681	20.0	-0.13	0.00105	0.00	0.0019	0.00

Table 10: SAR measurement results at the highest possible output power, measured in a body-worn position against the ICNIRP and ANSI SAR Limit.

Exhibit 11: Class II Permissive Change SAR Test report - 22920-3F

The below 835MHz SAR results were corrected for the tissue permittivity that was measured above the nominal target. Corrections were performed using the algorithm given in Annex B.3 of draft standard IEEE 1528b and Annex F of draft standard IEC 62209-2. No correction was made for conductivity, since the measured tissue value already represents a conservative result in the measured SAR.

Body-Worn; Back of Phone 25 mm from Phantom on CDMA800MHz scaled SAR								
<i>f</i> (MHz)	Description	Conducted Output Power (dBm)	Temp (C)	Drift (dB)	<i>10 g SAR value</i>		<i>1 g SAR value</i>	
					Measured (W/kg)	Extrapolated (W/kg)	Measured (W/kg)	Extrapolated (W/kg)
CDMA 800	Channel 1013	24.88						
	Channel 384	24.85	19.0	-0.152	0.331	0.34	0.471	0.49
	Channel 777	24.84						

Highest of Extrapolated SAR Values, including Bluetooth summation							
<i>f</i> (MHz)	Description	<i>10 g SAR value</i>			<i>1 g SAR value</i>		
		Original Measurement (W/kg)	Bluetooth Measurement (W/kg)	Summation (W/kg)	Original Measurement (W/kg)	Bluetooth Measurement (W/kg)	Summation (W/kg)
CDMA 800	Body Worn, Back of Phone 25 mm from Phantom	0.34	0.00	0.34	0.49	0.00	0.49
CDMA 1700	Body Worn, Back of Phone 25 mm from Phantom	0.88	0.00	0.88	1.50	0.00	1.50
CDMA 1900	Body Worn, Back of Phone 25 mm from Phantom	0.13	0.00	0.13	0.21	0.00	0.21

Table 11: SAR measurement results at the highest possible output power, measured in a body-worn position against the ICNIRP and ANSI SAR Limit.

Exhibit 11: Class II Permissive Change SAR Test report - 22920-3F

References

- [1] CENELEC, en62209-1:2006 “Human Exposure to Radio Frequency Fields From Hand - Held and Body - Mounted Wireless Communication Devices – Human Models, Instrumentation, and Procedures”
- [2] CENELEC, en50360:2001 “Product standard to demonstrate the compliance of mobile phones with the basic restrictions related to human exposure to electromagnetic fields (300MHz – 3GHz)”.
- [3] ANSI / IEEE, C95.1 1999 Edition “IEEE Standard for Safety Levels with Respect to Human Exposure to Radio Frequency Electromagnetic Fields, 3kHz to 300GHz”
- [4] FCC OET Bulletin 65 Supplement C 01-01
- [5] IEEE 1528 2003 Edition “IEEE Recommended Practice for Determining the Peak Spatial-Average Specific Absorption Rate (SAR) in the Human Head from Wireless Communications Devices: Measurement Techniques”
- [6] ICNIRP Guidelines “Guidelines for Limiting Exposure to Time-Varying Electric, Magnetic, and Electromagnetic Fields (up to 300 GHz)”

Appendix 1

SAR distribution comparison for the system accuracy verification

Test Laboratory: Motorola 032609 900MHz

Procedure Notes: 900 MHz System Performance Check / Dipole Sn# 91 PM1 Power = 200 mW

Sim.Temp@meas = 20.7 C Sim.Temp@SPC = 20.7 ° C Room Temp @ SPC = 19.8 ° C

Communication System: CW - Dipole; Frequency: 900 MHz; Channel Number: 4; Duty Cycle: 1:1

Medium: VALIDATION Only; Medium parameters used: $f = 900$ MHz; $\sigma = 0.98$ mho/m; $\epsilon_r = 40.7$; $\rho = 1000$ kg/m³

DASY4 Configuration:

- Probe: ES3DV3 - SN3183; ConvF(5.9, 5.9, 5.9); Calibrated: 08/18/2008
- Sensor-Surface: 4mm (Mechanical Surface Detection)
- Electronics: DAE3 Sn434; Calibrated: 02/09/2009
- Phantom: R#4 Sugar SAM (extended range), Rev.1 (25-Mar-05); Type: SAM v4.0; Serial: TP-1131;
- Measurement SW: DASY4, V4.7 Build 71; Postprocessing SW: SEMCAD, V1.8 Build 186

Daily SPC Check/Dipole Area Scan (4x9x1): Measurement grid: dx=15mm, dy=15mm

Maximum value of SAR (measured) = 2.07 mW/g

Daily SPC Check/0-Degree, 5x5x7 Cube (5x5x7)/Cube 0: Measurement grid: dx=8mm, dy=8mm, dz=5mm

Reference Value = 50.5 V/m; Power Drift = -0.003 dB

Peak SAR (extrapolated) = 3.19 W/kg

SAR(1 g) = 2.2 mW/g; SAR(10 g) = 1.43 mW/g

Maximum value of SAR (measured) = 2.40 mW/g

Daily SPC Check/90-Degree 5x5x7 Cube (5x5x7)/Cube 0: Measurement grid: dx=8mm, dy=8mm, dz=5mm

Reference Value = 50.5 V/m; Power Drift = -0.003 dB

Peak SAR (extrapolated) = 3.21 W/kg

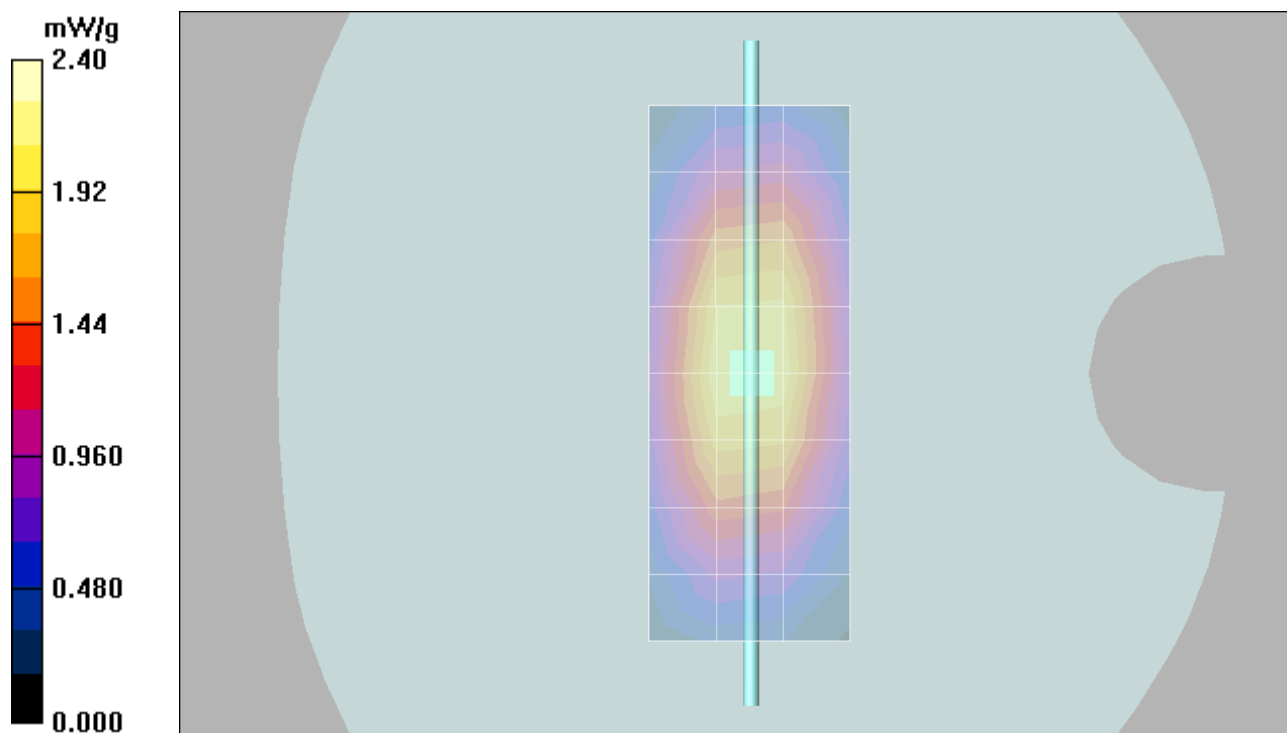
SAR(1 g) = 2.22 mW/g; SAR(10 g) = 1.44 mW/g

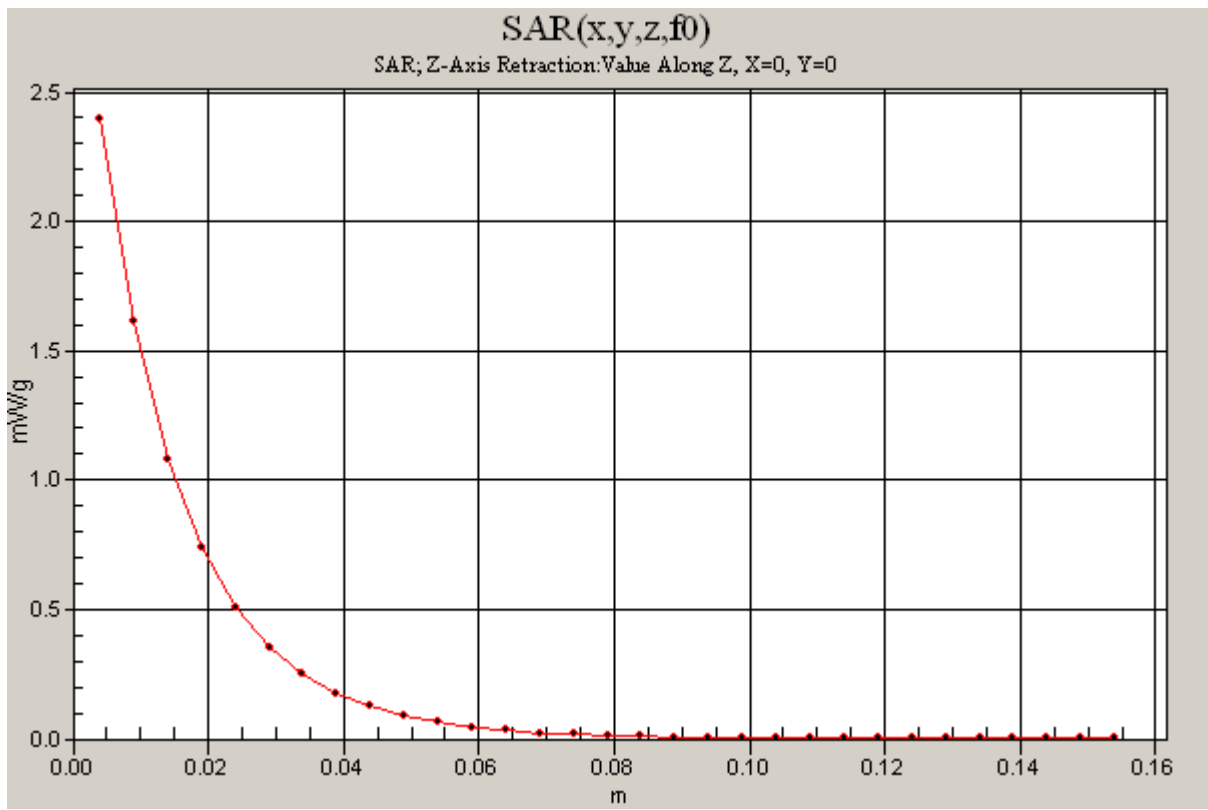
Maximum value of SAR (measured) = 2.41 mW/g

Daily SPC Check/Z-Axis Retraction (1x1x31):

Measurement grid: dx=20mm, dy=20mm, dz=5mm

Maximum value of SAR (measured) = 2.40 mW/g





Test Laboratory: Motorola 043009 900MHz

Procedure Notes: 900 MHz System Performance Check / Dipole Sn# 091 PM1 Power =200mW

Sim.Temp@meas = 20.8°C Sim.Temp@SPC =20.8°C Room Temp @ SPC = 20.3°C

Communication System: CW - Dipole; Frequency: 900 MHz; Channel Number: 4; Duty Cycle: 1:1

Medium: VALIDATION Only; Medium parameters used: $f = 900$ MHz; $\sigma = 0.97$ mho/m; $\epsilon_r = 41.4$; $\rho = 1000$ kg/m³

DASY4 Configuration:

- Probe: ES3DV3 - SN3183; ConvF(5.9, 5.9, 5.9); Calibrated: 08/18/2008
- Sensor-Surface: 4mm (Mechanical Surface Detection)
- Electronics: DAE3 Sn434; Calibrated: 02/09/2009
- Phantom: R#4 Sugar SAM (extended range), Rev.1 (25-Mar-05); Type: SAM v4.0; Serial: TP-1131;
- Measurement SW: DASY4, V4.7 Build 71; Postprocessing SW: SEMCAD, V1.8 Build 184

Daily SPC Check/Dipole Area Scan (4x9x1): Measurement grid: dx=15mm, dy=15mm

Maximum value of SAR (measured) = 2.15 mW/g

Daily SPC Check/0-Degree, 5x5x7 Cube (5x5x7)/Cube 0: Measurement grid: dx=8mm, dy=8mm, dz=5mm

Reference Value = 50.9 V/m; Power Drift = -0.026 dB

Peak SAR (extrapolated) = 3.15 W/kg

SAR(1 g) = 2.18 mW/g; SAR(10 g) = 1.41 mW/g

Maximum value of SAR (measured) = 2.37 mW/g

Daily SPC Check/90-Degree 5x5x7 Cube (5x5x7)/Cube 0: Measurement grid: dx=8mm, dy=8mm, dz=5mm

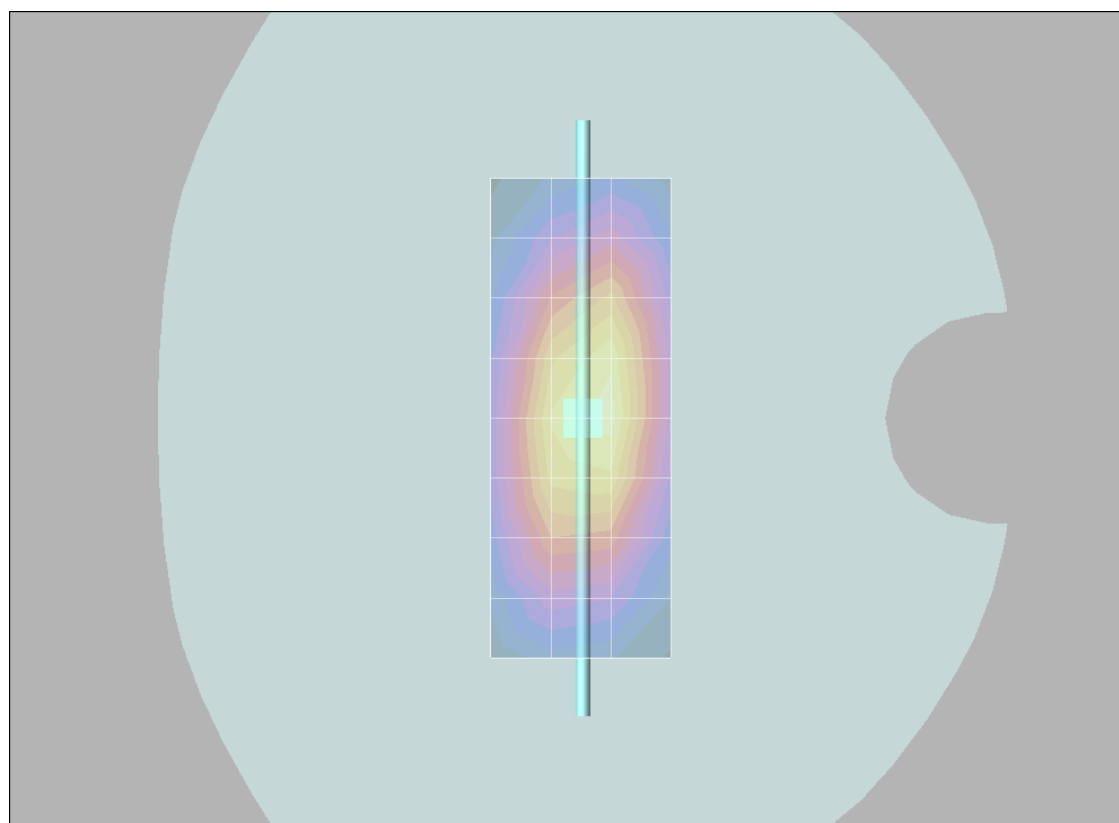
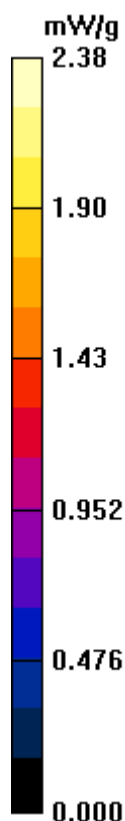
Reference Value = 50.9 V/m; Power Drift = -0.026 dB

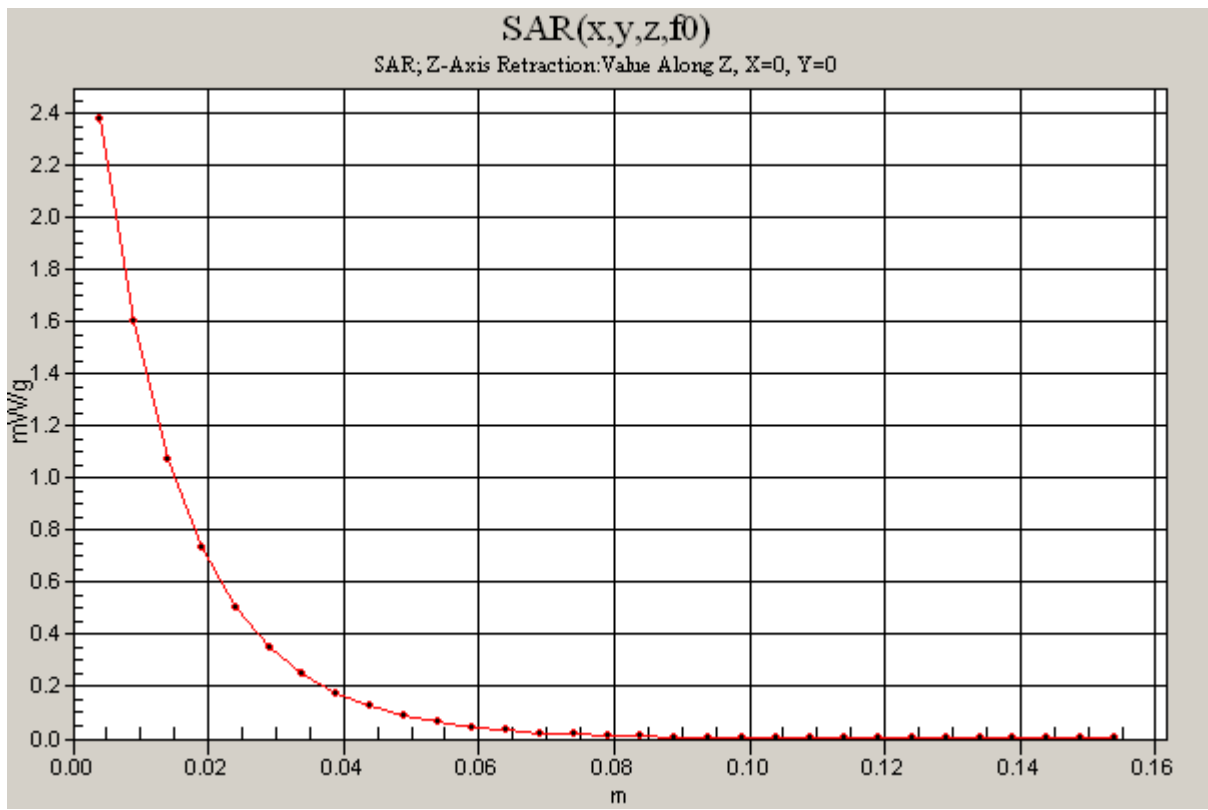
Peak SAR (extrapolated) = 3.16 W/kg

SAR(1 g) = 2.18 mW/g; SAR(10 g) = 1.41 mW/g

Daily SPC Check/Z-Axis Retraction (1x1x31): Measurement grid: dx=20mm, dy=20mm, dz=5mm

Maximum value of SAR (measured) = 2.38 mW/g





Test Laboratory: Motorola**050809 900MHz**

Procedure Notes: 900 MHz System Performance Check / Dipole Sn# 91 PM1 Power = 200 mW

Sim.Temp@meas = 20.6 ° C Sim.Temp@SPC = 20.6 ° C Room Temp @ SPC = 19.9 ° C

Communication System: CW - Dipole; Frequency: 900 MHz; Channel Number: 4; Duty Cycle: 1:1

Medium: VALIDATION Only; Medium parameters used: $f = 900$ MHz; $\sigma = 0.98$ mho/m; $\epsilon_r = 40.8$; $\rho = 1000$ kg/m³

DASY4 Configuration:

- Probe: ES3DV3 - SN3183; ConvF(5.9, 5.9, 5.9); Calibrated: 08/18/2008
- Sensor-Surface: 4mm (Mechanical Surface Detection)
- Electronics: DAE3 Sn434; Calibrated: 02/09/2009
- Phantom: R#4 Sugar SAM (extended range), Rev.1 (25-Mar-05); Type: SAM v4.0; Serial: TP-1131;
- Measurement SW: DASY4, V4.7 Build 80; Postprocessing SW: SEMCAD, V1.8 Build 186

Daily SPC Check/Dipole Area Scan (4x9x1): Measurement grid: dx=15mm, dy=15mm

Maximum value of SAR (measured) = 2.12 mW/g

Daily SPC Check/0-Degree, 5x5x7 Cube (5x5x7)/Cube 0: Measurement grid: dx=8mm, dy=8mm, dz=5mm

Reference Value = 51.2 V/m; Power Drift = 0.007 dB

Peak SAR (extrapolated) = 3.30 W/kg

SAR(1 g) = 2.27 mW/g; SAR(10 g) = 1.47 mW/g

Maximum value of SAR (measured) = 2.48 mW/g

Daily SPC Check/90-Degree 5x5x7 Cube (5x5x7)/Cube 0: Measurement grid: dx=8mm, dy=8mm, dz=5mm

Reference Value = 51.2 V/m; Power Drift = 0.007 dB

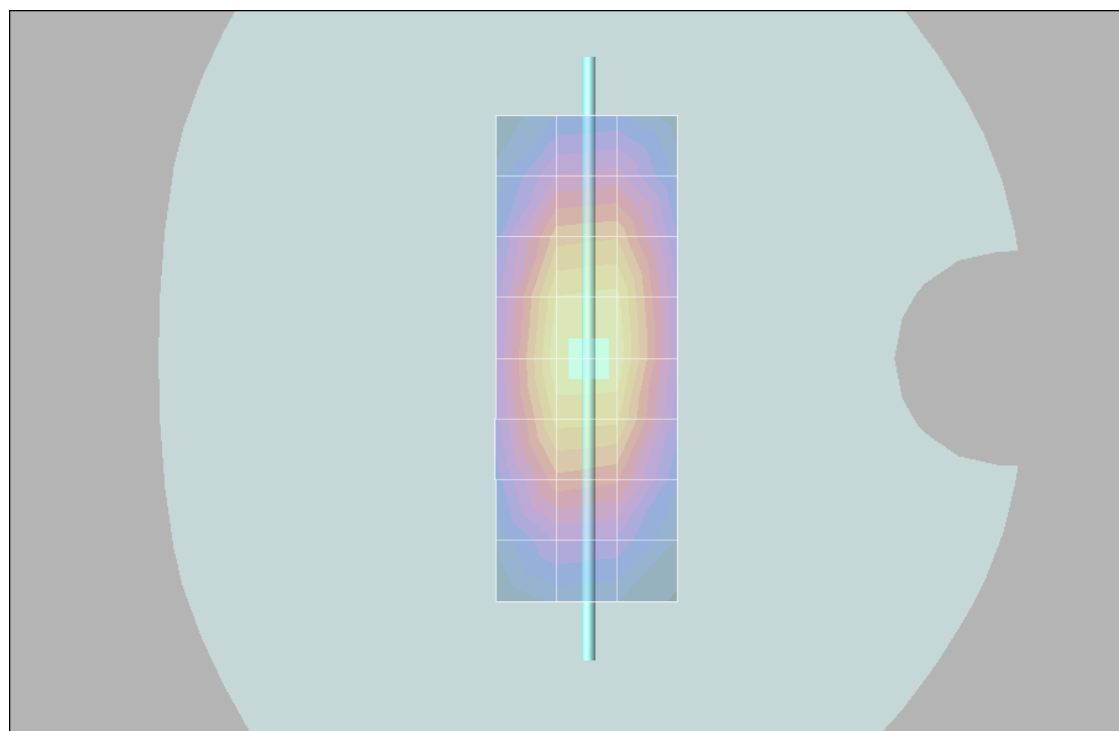
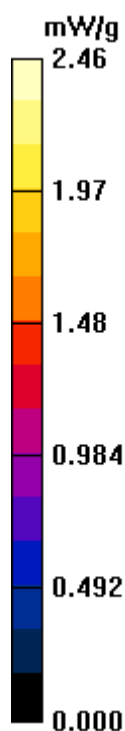
Peak SAR (extrapolated) = 3.28 W/kg

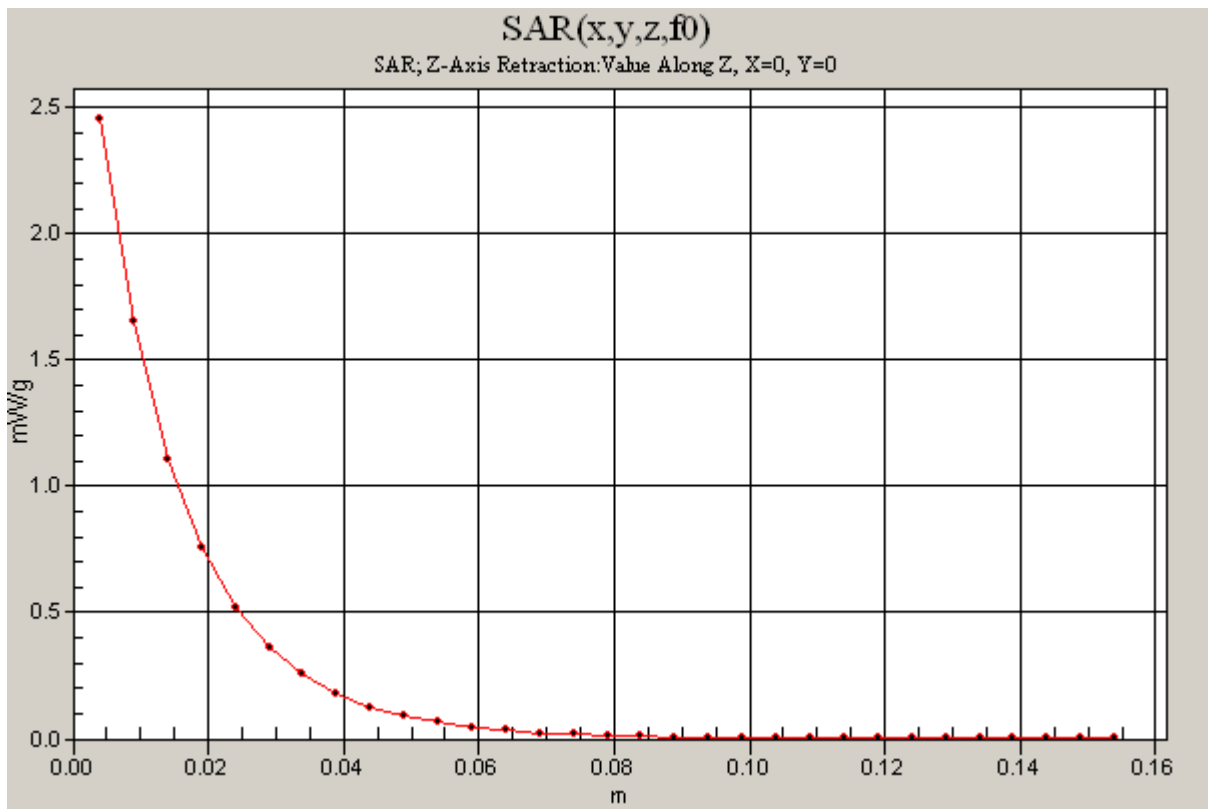
SAR(1 g) = 2.26 mW/g; SAR(10 g) = 1.46 mW/g

Maximum value of SAR (measured) = 2.47 mW/g

Daily SPC Check/Z-Axis Retraction (1x1x31): Measurement grid: dx=20mm, dy=20mm, dz=5mm

Maximum value of SAR (measured) = 2.46 mW/g





Test Laboratory: Motorola 042709 1800MHz

Procedure Notes: 1800 MHz System Performance Check / Dipole Sn# 272tr PM1 Power = 200 mW

Sim.Temp@meas = 19.4 ° C Sim.Temp@SPC = 19.4 ° C Room Temp @ SPC = 20.1 ° C

Communication System: CW - Dipole; Frequency: 1800 MHz; Channel Number: 8; Duty Cycle: 1:1

Medium: VALIDATION Only; Medium parameters used: $f = 1800$ MHz; $\sigma = 1.37$ mho/m; $\epsilon_r = 40.4$; $\rho = 1000$ kg/m³

DASY4 Configuration:

- Probe: ES3DV3 - SN3183; ConvF(5.2, 5.2, 5.2); Calibrated: 08/18/2008
- Sensor-Surface: 4mm (Mechanical Surface Detection)
- Electronics: DAE3 Sn434; Calibrated: 02/09/2009
- Phantom: R4 : Sect.1, Amy Twin; Type: Amy Twin Flat; Serial: n/a;
- Measurement SW: DASY4, V4.7 Build 71; Postprocessing SW: SEMCAD, V1.8 Build 184

Daily SPC Check/Dipole Area Scan (9x4x1): Measurement grid: dx=15mm, dy=15mm

Maximum value of SAR (measured) = 6.27 mW/g

Daily SPC Check/0-Degree 5x5x7 Cube (5x5x7)/Cube 0: Measurement grid: dx=8mm, dy=8mm, dz=5mm

Reference Value = 80.0 V/m; Power Drift = -0.046 dB

Peak SAR (extrapolated) = 13.5 W/kg

SAR(1 g) = 7.55 mW/g; SAR(10 g) = 4 mW/g

Maximum value of SAR (measured) = 8.48 mW/g

Daily SPC Check/90-Degree 5x5x7 Cube (5x5x7)/Cube 0: Measurement grid: dx=8mm, dy=8mm, dz=5mm

Reference Value = 80.0 V/m; Power Drift = -0.046 dB

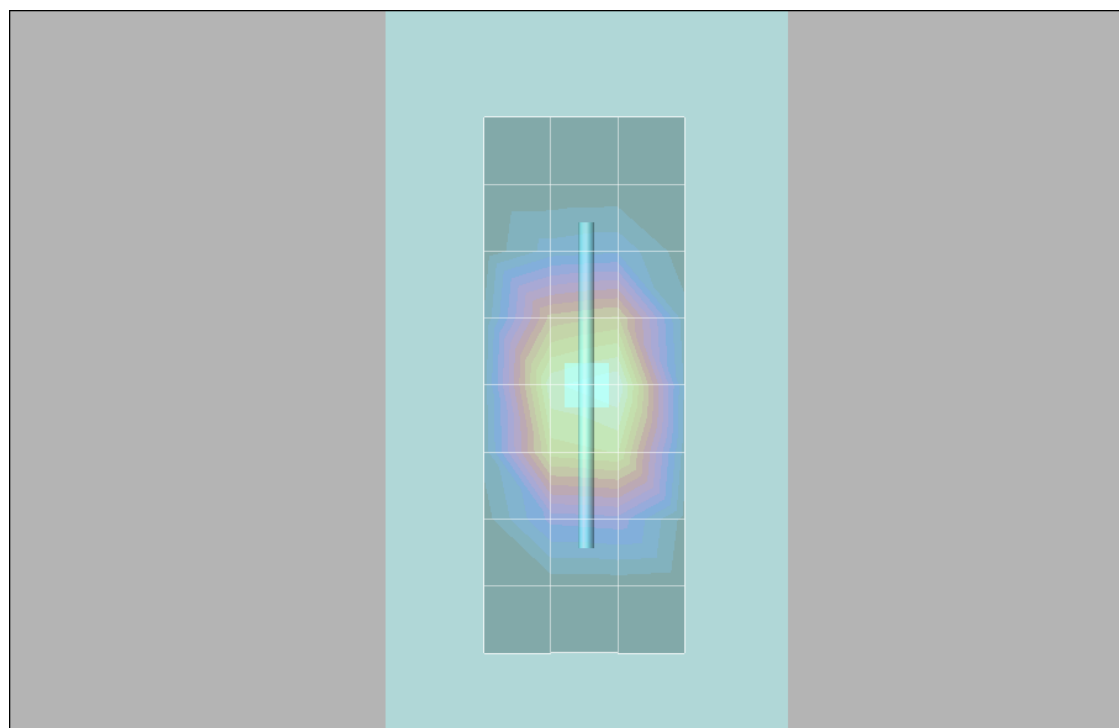
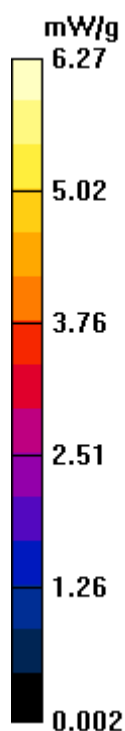
Peak SAR (extrapolated) = 13.7 W/kg

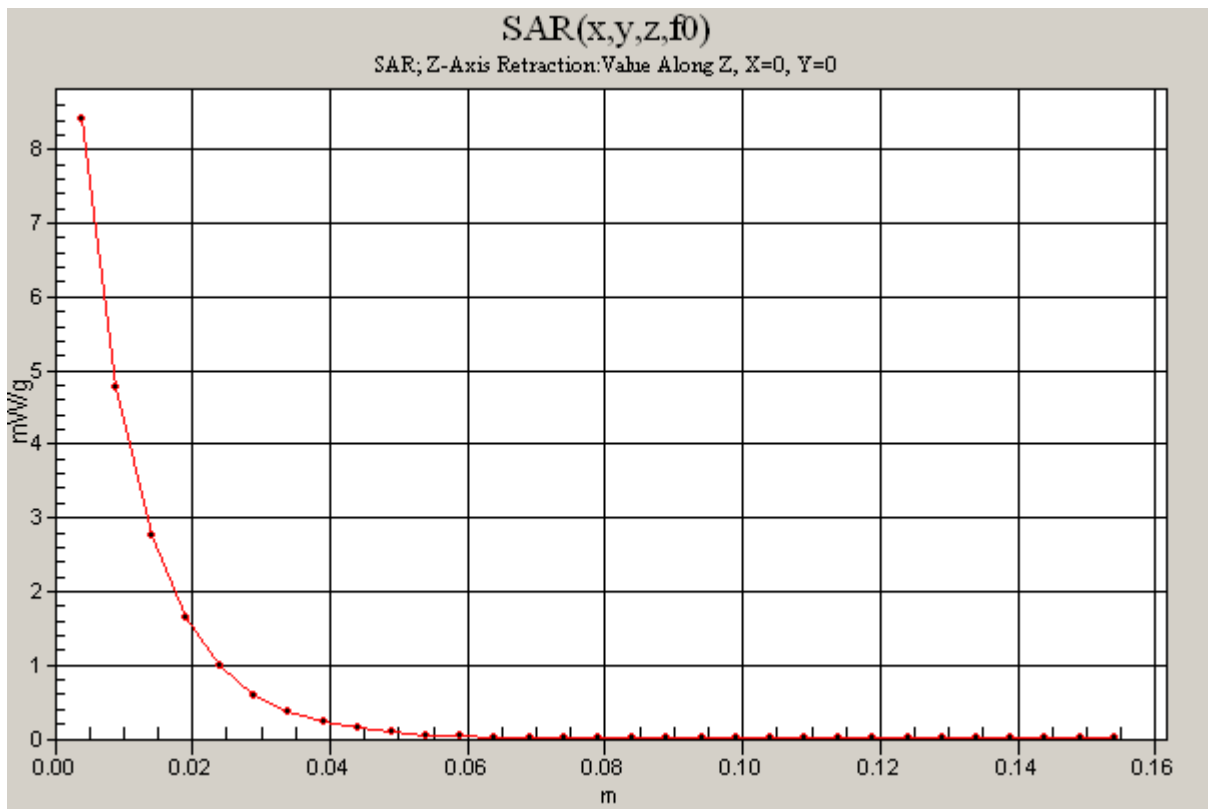
SAR(1 g) = 7.64 mW/g; SAR(10 g) = 4.05 mW/g

Maximum value of SAR (measured) = 8.57 mW/g

Daily SPC Check/Z-Axis Retraction (1x1x31): Measurement grid: dx=20mm, dy=20mm, dz=5mm

Maximum value of SAR (measured) = 8.41 mW/g





Test Laboratory: Motorola 042909 1800MHz

Procedure Notes: 1800 MHz System Performance Check / Dipole Sn# 272tr PM1 Power = 200mW

Sim.Temp@meas = 19.4 ° C Sim.Temp@SPC = 19.5 ° C Room Temp @ SPC = 20.5 ° C

Communication System: CW - Dipole; Frequency: 1800 MHz; Channel Number: 8; Duty Cycle: 1:1

Medium: VALIDATION Only; Medium parameters used: $f = 1800$ MHz; $\sigma = 1.37$ mho/m; $\epsilon_r = 40.4$; $\rho = 1000$ kg/m³

DASY4 Configuration:

- Probe: ES3DV3 - SN3183; ConvF(5.2, 5.2, 5.2); Calibrated: 08/18/2008
- Sensor-Surface: 4mm (Mechanical Surface Detection)
- Electronics: DAE3 Sn434; Calibrated: 02/09/2009
- Phantom: R4 : Sect.1, Amy Twin; Type: Amy Twin Flat; Serial: n/a;
- Measurement SW: DASY4, V4.7 Build 71; Postprocessing SW: SEMCAD, V1.8 Build 186

Daily SPC Check/Dipole Area Scan (9x4x1): Measurement grid: dx=15mm, dy=15mm

Maximum value of SAR (measured) = 7.00 mW/g

Daily SPC Check/0-Degree 5x5x7 Cube (5x5x7)/Cube 0: Measurement grid: dx=8mm, dy=8mm, dz=5mm

Reference Value = 79.7 V/m; Power Drift = -0.032 dB

Peak SAR (extrapolated) = 13.1 W/kg

SAR(1 g) = 7.42 mW/g; SAR(10 g) = 3.95 mW/g

Maximum value of SAR (measured) = 8.32 mW/g

Daily SPC Check/90-Degree 5x5x7 Cube (5x5x7)/Cube 0: Measurement grid: dx=8mm, dy=8mm, dz=5mm

Reference Value = 79.7 V/m; Power Drift = -0.032 dB

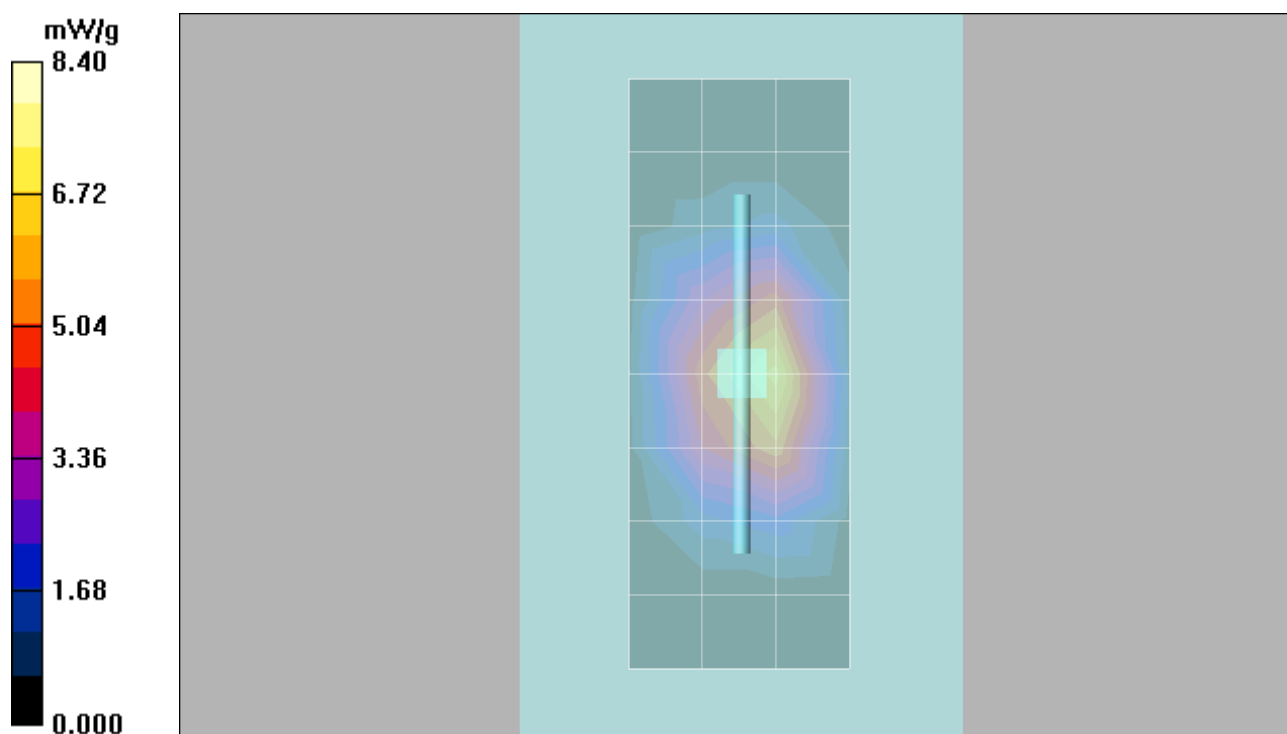
Peak SAR (extrapolated) = 13.3 W/kg

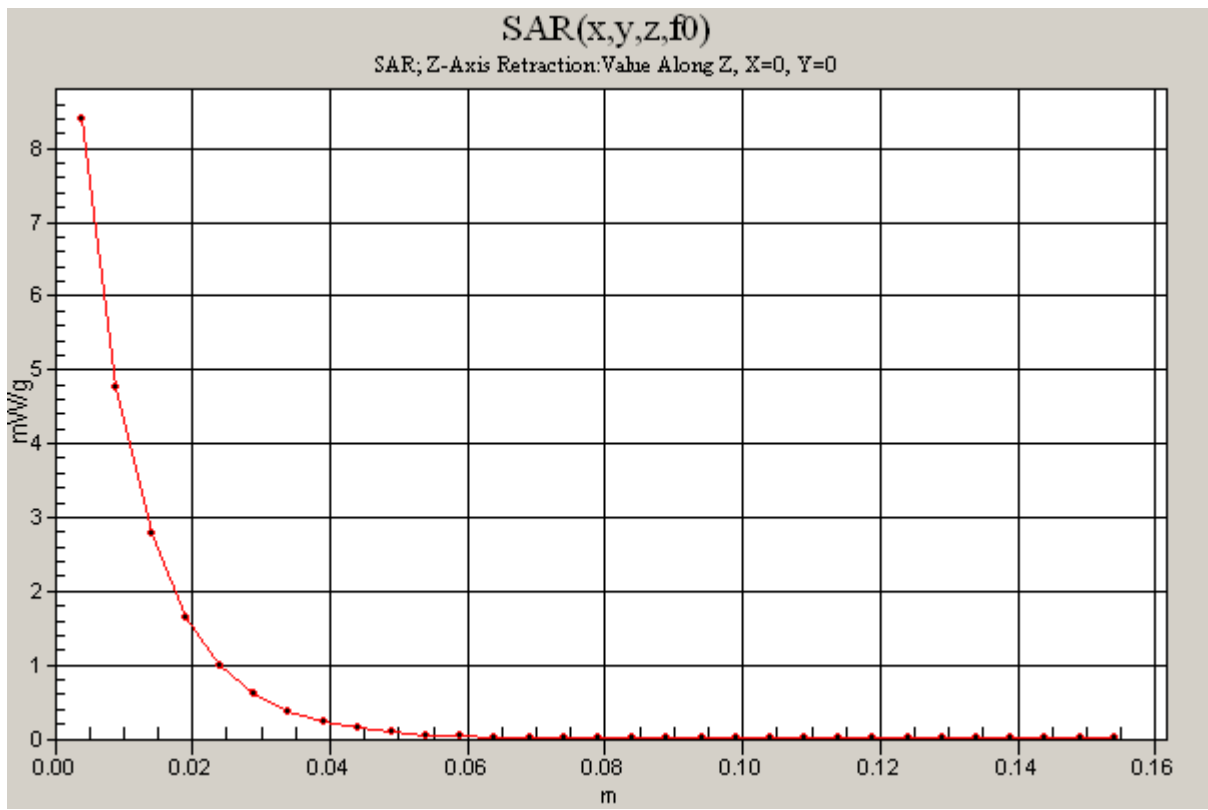
SAR(1 g) = 7.52 mW/g; SAR(10 g) = 4 mW/g

Maximum value of SAR (measured) = 8.44 mW/g

Daily SPC Check/Z-Axis Retraction (1x1x31): Measurement grid: dx=20mm, dy=20mm, dz=5mm

Maximum value of SAR (measured) = 8.40 mW/g





Test Laboratory: Motorola**043009 1800MHz**

Procedure Notes: 1800 MHz System Performance Check / Dipole Sn# 272tr PM1 Power = 200

mW Sim.Temp@meas = 19.9 ° C Sim.Temp@SPC = 19.6 ° C Room Temp @ SPC = 20.5 ° C

Communication System: CW - Dipole; Frequency: 1800 MHz; Channel Number: 8; Duty Cycle: 1:1

Medium: VALIDATION Only; Medium parameters used: $f = 1800$ MHz; $\sigma = 1.38$ mho/m; $\epsilon_r = 38.9$; $\rho = 1000$ kg/m³

DASY4 Configuration:

- Probe: ES3DV3 - SN3183; ConvF(5.2, 5.2, 5.2); Calibrated: 08/18/2008
- Sensor-Surface: 4mm (Mechanical Surface Detection)
- Electronics: DAE3 Sn434; Calibrated: 02/09/2009
- Phantom: R4 : Sect.1, Amy Twin; Type: Amy Twin Flat; Serial: n/a;
- Measurement SW: DASY4, V4.7 Build 71; Postprocessing SW: SEMCAD, V1.8 Build 186

Daily SPC Check/Dipole Area Scan (9x4x1): Measurement grid: dx=15mm, dy=15mm

Maximum value of SAR (measured) = 7.92 mW/g

Daily SPC Check/0-Degree 5x5x7 Cube (5x5x7)/Cube 0: Measurement grid: dx=8mm, dy=8mm, dz=5mm

Reference Value = 79.2 V/m; Power Drift = -0.048 dB

Peak SAR (extrapolated) = 13.8 W/kg

SAR(1 g) = 7.74 mW/g; SAR(10 g) = 4.1 mW/g

Maximum value of SAR (measured) = 8.60 mW/g

Daily SPC Check/90-Degree 5x5x7 Cube (5x5x7)/Cube 0: Measurement grid: dx=8mm, dy=8mm, dz=5mm

Reference Value = 79.2 V/m; Power Drift = -0.048 dB

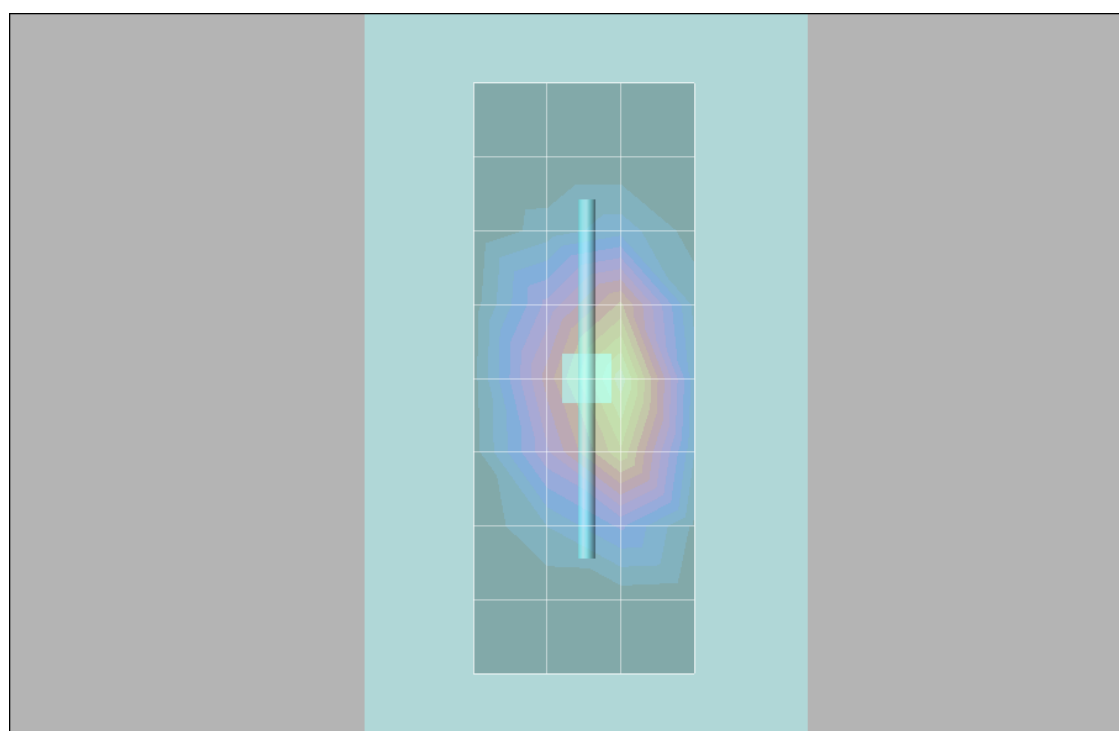
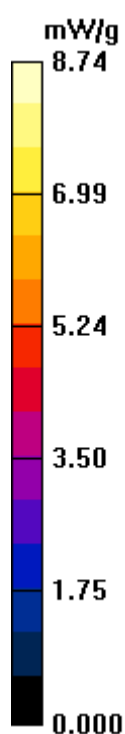
Peak SAR (extrapolated) = 13.8 W/kg

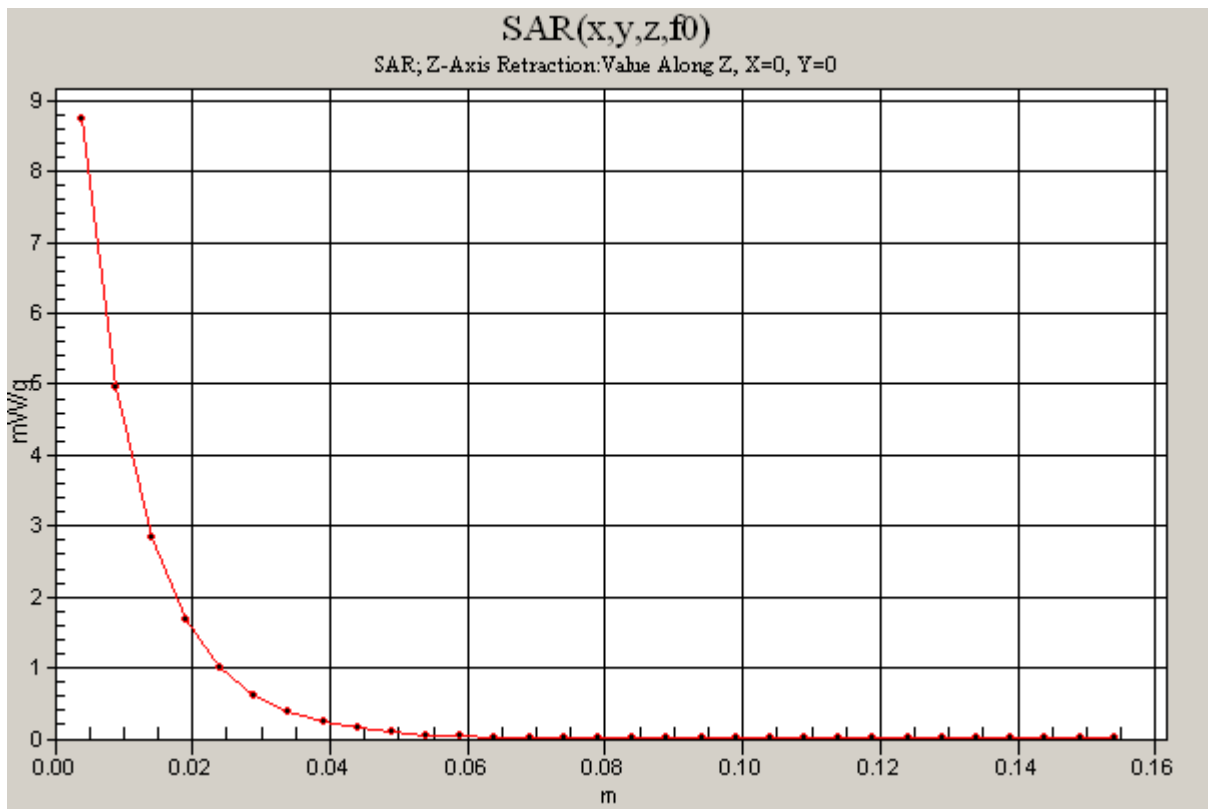
SAR(1 g) = 7.74 mW/g; SAR(10 g) = 4.1 mW/g

Maximum value of SAR (measured) = 8.63 mW/g

Daily SPC Check/Z-Axis Retraction (1x1x31): Measurement grid: dx=20mm, dy=20mm, dz=5mm

Maximum value of SAR (measured) = 8.74 mW/g





Test Laboratory: Motorola 051009 1800MHz

Procedure Notes: 1800 MHz System Performance Check / Dipole Sn# 272TR PM1 Power =200mW

Sim.Temp@meas = 19°C Sim.Temp@SPC =19.°C Room Temp @ SPC = 19.7°C

Communication System: CW - Dipole; Frequency: 1800 MHz; Channel Number: 8; Duty Cycle: 1:1

Medium: VALIDATION Only; Medium parameters used: $f = 1800$ MHz; $\sigma = 1.45$ mho/m; $\epsilon_r = 38.3$; $\rho = 1000$ kg/m³

DASY4 Configuration:

- Probe: ES3DV3 - SN3183; ConvF(5.2, 5.2, 5.2); Calibrated: 08/18/2008
- Sensor-Surface: 4mm (Mechanical Surface Detection)
- Electronics: DAE3 Sn434; Calibrated: 02/09/2009
- Phantom: R#4 Glycol SAM (extended range), Rev.1 (25-Mar-05); Type: SAM v4.0; Serial: TP-1250;
- Measurement SW: DASY4, V4.7 Build 80; Postprocessing SW: SEMCAD, V1.8 Build 186

Daily SPC Check/Dipole Area Scan (4x9x1): Measurement grid: dx=15mm, dy=15mm

Maximum value of SAR (measured) = 6.64 mW/g

Daily SPC Check/0-Degree, 5x5x7 Cube (5x5x7)/Cube 0: Measurement grid: dx=8mm, dy=8mm, dz=5mm

Reference Value = 80.3 V/m; Power Drift = 0.077 dB

Peak SAR (extrapolated) = 14.5 W/kg

SAR(1 g) = 8.04 mW/g; SAR(10 g) = 4.21 mW/g

Maximum value of SAR (measured) = 9.04 mW/g

Daily SPC Check/90-Degree 5x5x7 Cube (5x5x7)/Cube 0: Measurement grid: dx=8mm, dy=8mm, dz=5mm

Reference Value = 80.3 V/m; Power Drift = 0.077 dB

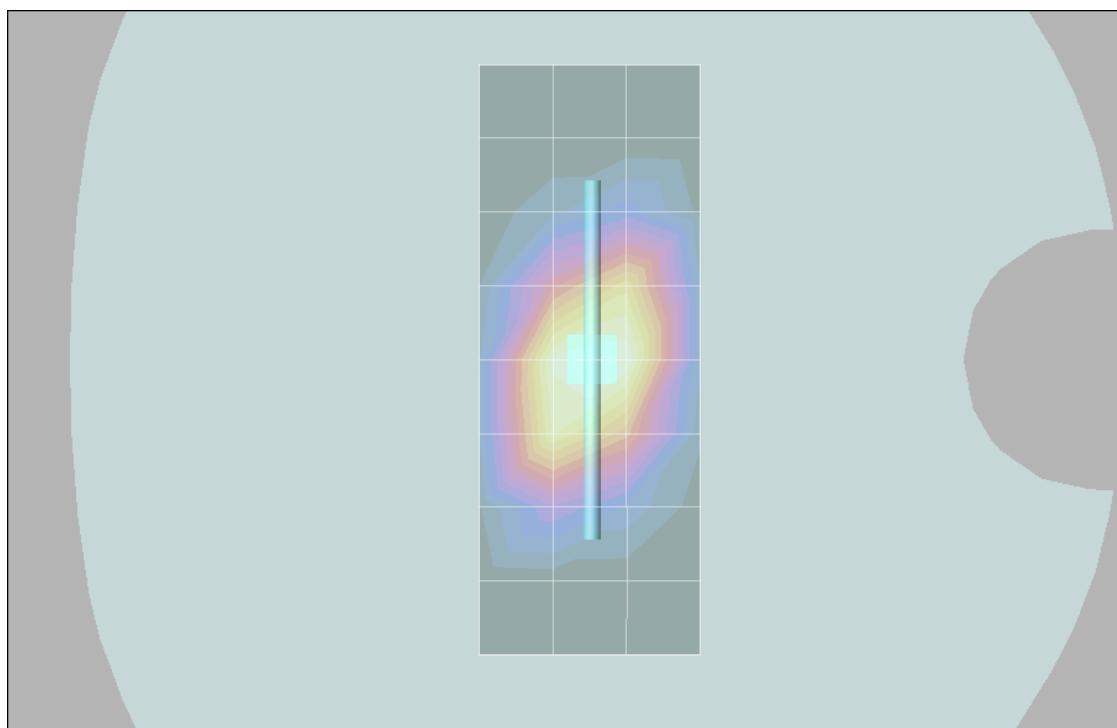
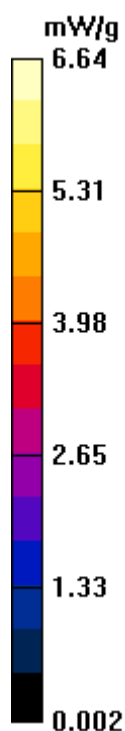
Peak SAR (extrapolated) = 14.5 W/kg

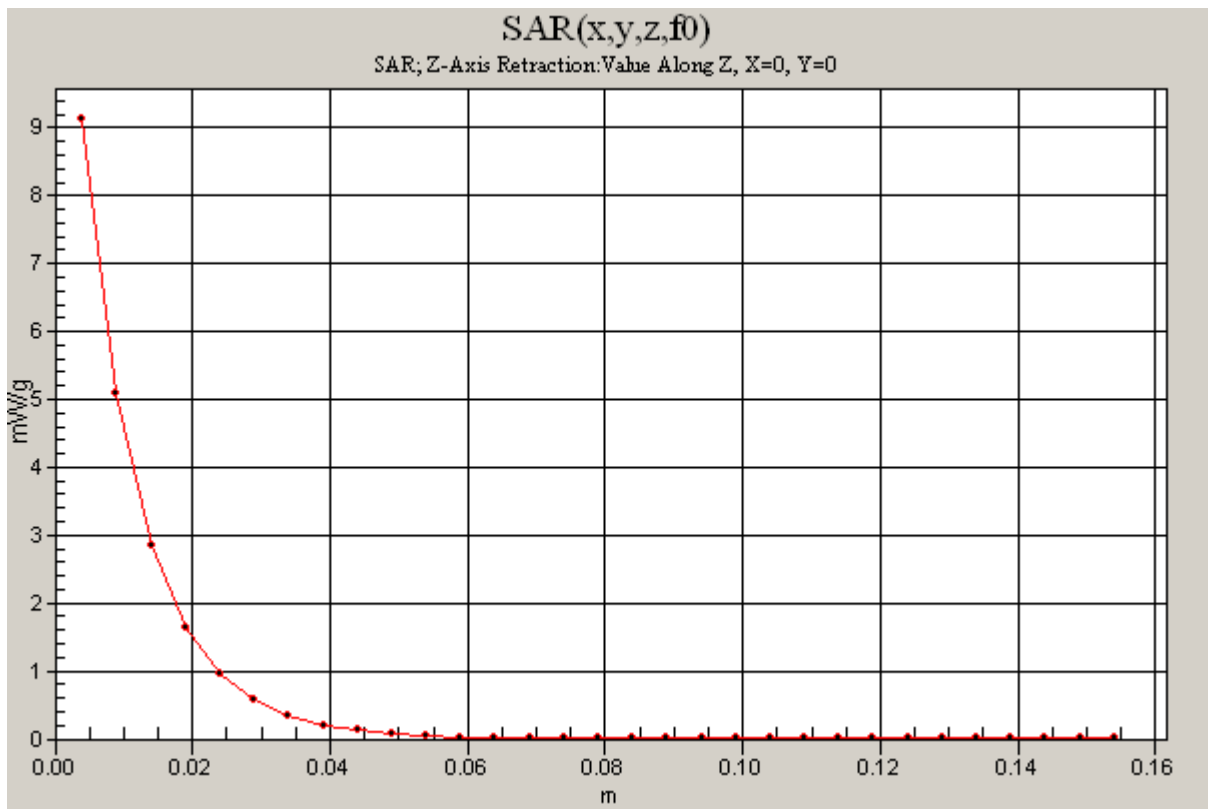
SAR(1 g) = 8.07 mW/g; SAR(10 g) = 4.22 mW/g

Maximum value of SAR (measured) = 9.08 mW/g

Daily SPC Check/Z-Axis Retraction (1x1x31): Measurement grid: dx=20mm, dy=20mm, dz=5mm

Maximum value of SAR (measured) = 9.13 mW/g





Test Laboratory: Motorola 042809 2450MHz

Procedure Notes: 2450 MHz System Performance Check / Dipole Sn# 740 PM1 Power =200mW

Sim.Temp@meas = 20.*C Sim.Temp@SPC =20.*C Room Temp @ SPC = 20.6*C

Communication System: CW - Dipole; Frequency: 2450 MHz; Channel Number: 11; Duty Cycle: 1:1

Medium: VALIDATION Only; Medium parameters used: $f = 2450$ MHz; $\sigma = 1.85$ mho/m; $\epsilon_r = 39.2$; $\rho = 1000$ kg/m³

DASY4 Configuration:

- Probe: ES3DV3 - SN3183; ConvF(4.6, 4.6, 4.6); Calibrated: 08/18/2008
- Sensor-Surface: 4mm (Mechanical Surface Detection)
- Electronics: DAE3 Sn434; Calibrated: 02/09/2009
- Phantom: R4 : Sect.1, Amy Twin; Type: Amy Twin Flat; Serial: n/a;
- Measurement SW: DASY4, V4.7 Build 71; Postprocessing SW: SEMCAD, V1.8 Build 184

Daily SPC Check/Dipole Area Scan (4x9x1): Measurement grid: dx=15mm, dy=15mm

Maximum value of SAR (measured) = 7.70 mW/g

Daily SPC Check/0-Degree, 5x5x7 Cube (5x5x7)/Cube 0: Measurement grid: dx=8mm, dy=8mm, dz=5mm

Reference Value = 80.5 V/m; Power Drift = 0.105 dB

Peak SAR (extrapolated) = 22.9 W/kg

SAR(1 g) = 10.9 mW/g; SAR(10 g) = 5 mW/g

Maximum value of SAR (measured) = 12.3 mW/g

Daily SPC Check/90-Degree 5x5x7 Cube (5x5x7)/Cube 0: Measurement grid: dx=8mm, dy=8mm, dz=5mm

Reference Value = 80.5 V/m; Power Drift = 0.105 dB

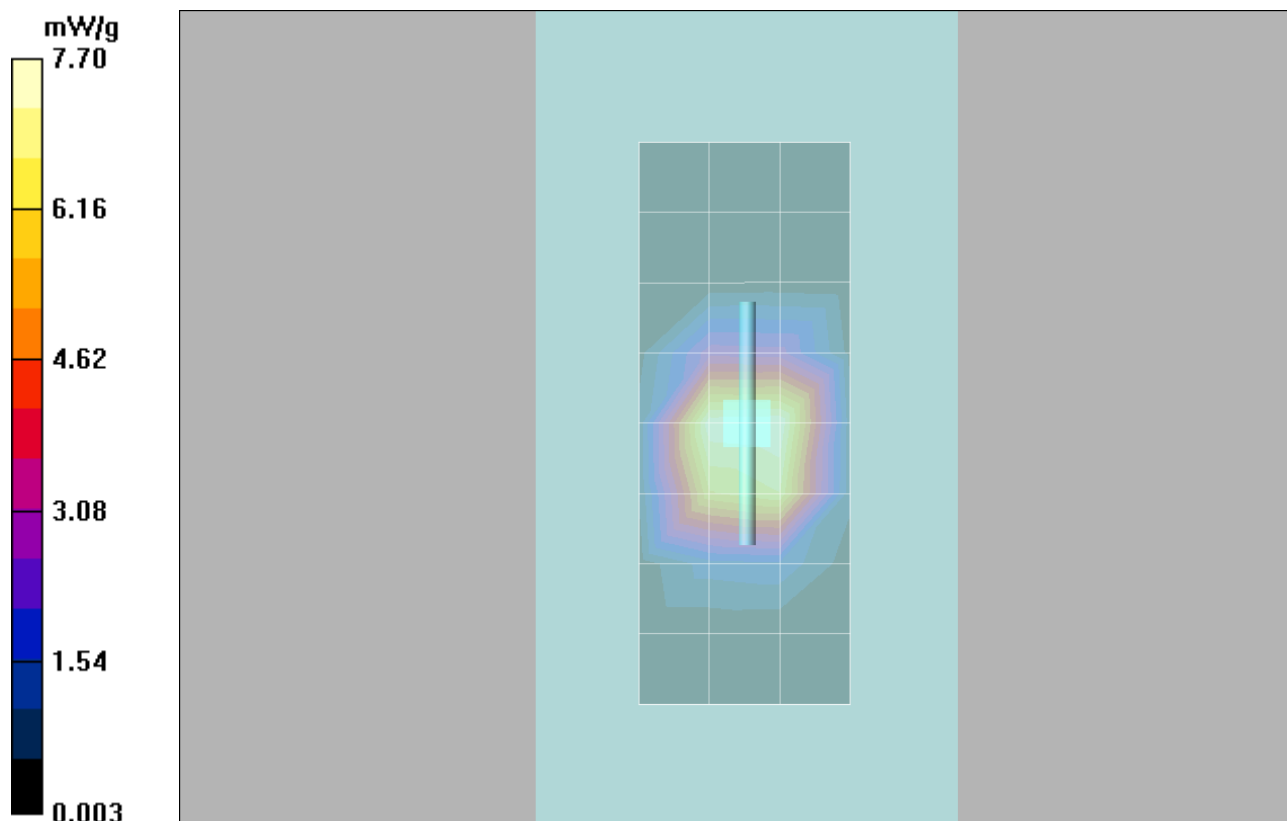
Peak SAR (extrapolated) = 23.5 W/kg

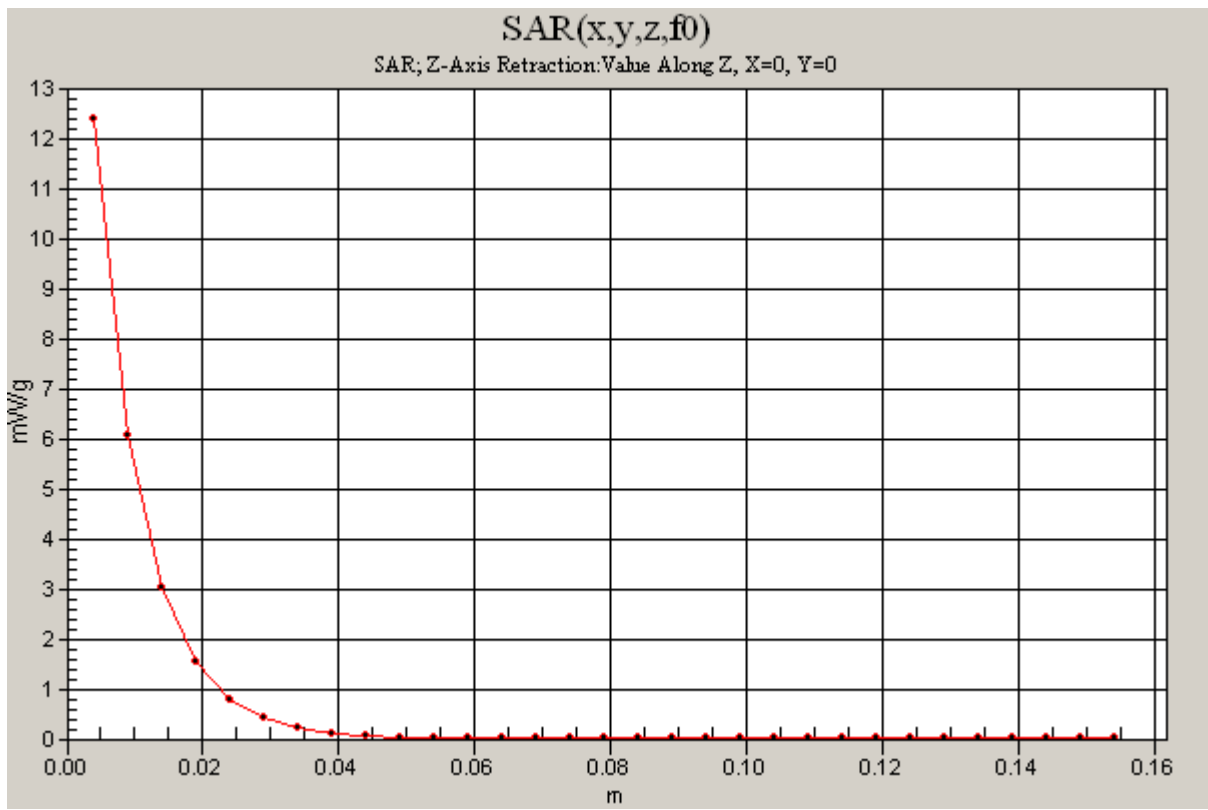
SAR(1 g) = 11.1 mW/g; SAR(10 g) = 5.08 mW/g

Maximum value of SAR (measured) = 12.6 mW/g

Daily SPC Check/Z-Axis Retraction (1x1x31): Measurement grid: dx=20mm, dy=20mm, dz=5mm

Maximum value of SAR (measured) = 12.4 mW/g





Appendix 2

SAR distribution plots for Phantom Head Adjacent Use

Date/Time: 04/30/2009 AM 08:55:55

Test Laboratory: Motorola**CDMA800 Cheek (Slider Ext.)****80747706;**

Procedure Notes: Pwr Step: Always up Antenna Position: INTERNAL

Battery Model #: SNN5834A DEVICE POSITION: CHEEK

Communication System: CDMA 835; Frequency: 836.52 MHz; Channel Number: 384; Duty Cycle: 1:1

Medium: Low Freq Head; Medium parameters used: $f = 835$ MHz; $\sigma = 0.9$ mho/m; $\epsilon_r = 42.2$; $\rho = 1000$ kg/m³

DASY4 Configuration:

- Probe: ES3DV3 - SN3183; ConvF(5.9, 5.9, 5.9); Calibrated: 08/18/2008
- Sensor-Surface: 4mm (Mechanical Surface Detection)
- Electronics: DAE3 Sn434; Calibrated: 02/09/2009
- Phantom: R#4 Sugar SAM (extended range), Rev.1 (25-Mar-05); Type: SAM v4.0; Serial: TP-1131;
- Measurement SW: DASY4, V4.7 Build 71; Postprocessing SW: SEMCAD, V1.8 Build 186

Left Head Template/Area Scan - Normal (15mm) (7x17x1): Measurement grid: dx=15mm, dy=15mm

Maximum value of SAR (measured) = 1.03 mW/g

Left Head Template/5x5x7 Zoom Scan (<=3GHz) - to correct max outside (5x5x7)/Cube 0:

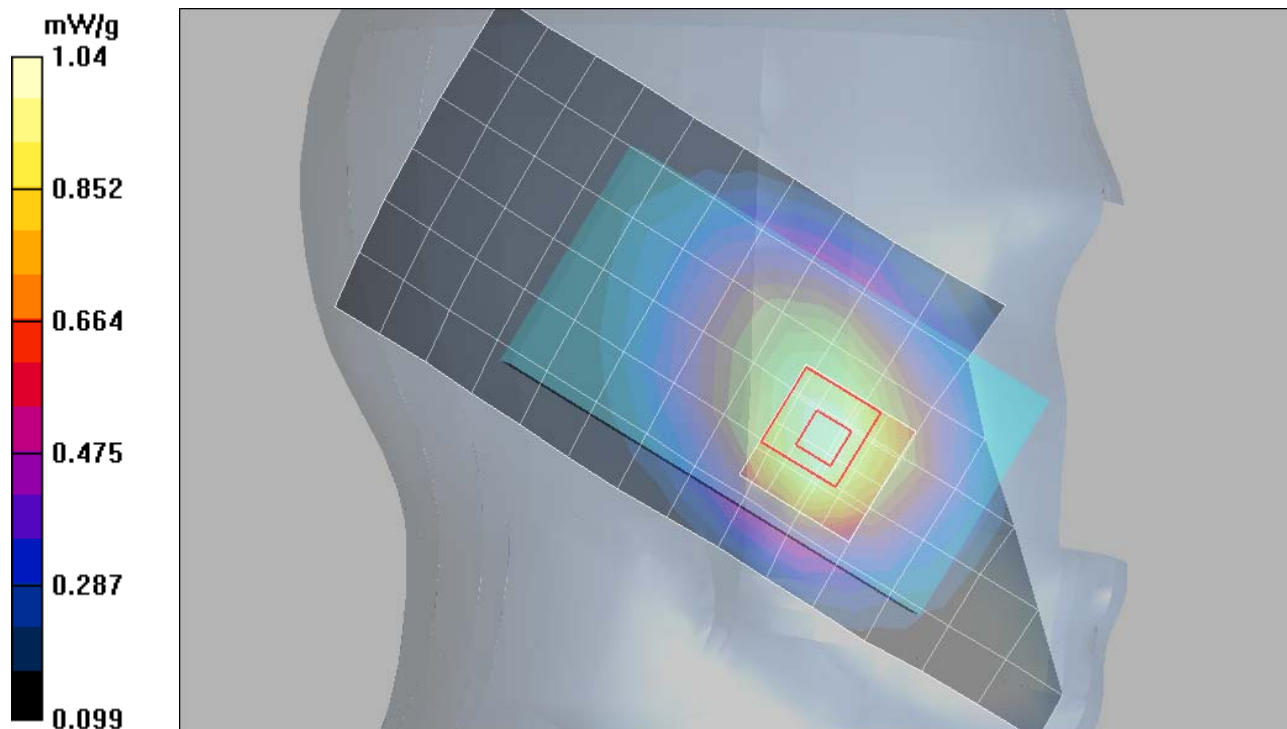
Measurement grid: dx=8mm, dy=8mm, dz=5mm

Reference Value = 34.6 V/m; Power Drift = -0.315 dB

Peak SAR (extrapolated) = 1.23 W/kg

SAR(1 g) = 0.979 mW/g; SAR(10 g) = 0.718 mW/g

Maximum value of SAR (measured) = 1.04 mW/g



Test Laboratory: Motorola CDMA800 Cheek (Slider Ret.)

80747706;

Procedure Notes: Pwr Step: Always Up Antenna Position: Internal

Battery Model #: SNN5834A DEVICE POSITION (cheek or rotated): Cheek

Communication System: CDMA 835; Frequency: 836.52 MHz; Channel Number: 384; Duty Cycle: 1:1

Medium: Low Freq Head; Medium parameters used: $f = 835$ MHz; $\sigma = 0.92$ mho/m; $\epsilon_r = 41.6$; $\rho = 1000$ kg/m³

DASY4 Configuration:

- Probe: ES3DV3 - SN3183; ConvF(5.9, 5.9, 5.9); Calibrated: 08/18/2008
- Sensor-Surface: 4mm (Mechanical Surface Detection)
- Electronics: DAE3 Sn434; Calibrated: 02/09/2009
- Phantom: R#4 Sugar SAM (extended range), Rev.1 (25-Mar-05); Type: SAM v4.0; Serial: TP-1131;
- Measurement SW: DASY4, V4.7 Build 80; Postprocessing SW: SEMCAD, V1.8 Build 186

Left Head Template/Area Scan - Normal (15mm) (7x17x1): Measurement grid: dx=15mm, dy=15mm

Maximum value of SAR (measured) = 0.682 mW/g

Left Head Template/5x5x7 Zoom Scan (<=3GHz) (5x5x7)/Cube 0:

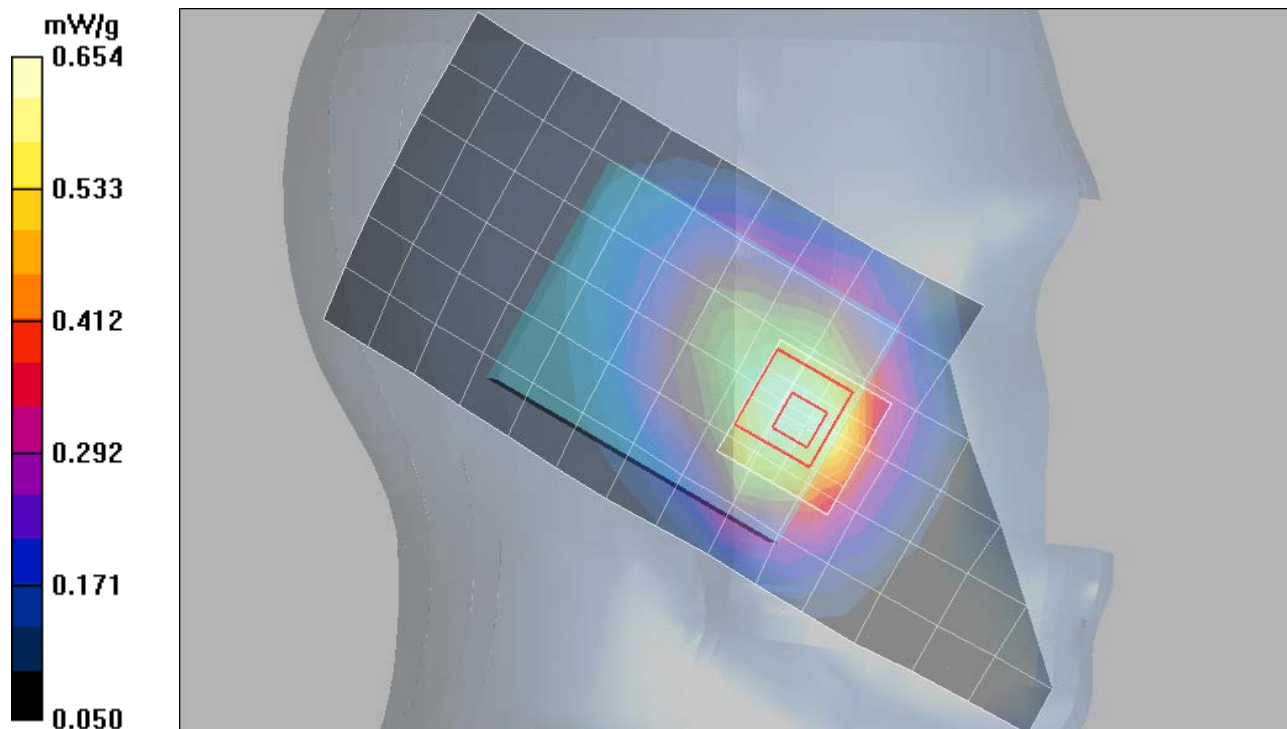
Measurement grid: dx=8mm, dy=8mm, dz=5mm

Reference Value = 26.3 V/m; Power Drift = 0.024 dB

Peak SAR (extrapolated) = 0.784 W/kg

SAR(1 g) = 0.613 mW/g; SAR(10 g) = 0.439 mW/g

Maximum value of SAR (measured) = 0.654 mW/g



Test Laboratory: Motorola**CDMA800 Tilted (Slider Ext.)****80747706;**

Procedure Notes: Pwr Step: Always up Antenna Position: INTERNAL

Battery Model #: SNN5834A DEVICE POSITION: Rotated

Communication System: CDMA 835; Frequency: 836.52 MHz; Channel Number: 384; Duty Cycle: 1:1

Medium: Low Freq Head; Medium parameters used: $f = 835$ MHz; $\sigma = 0.9$ mho/m; $\epsilon_r = 42.2$; $\rho = 1000$ kg/m³

DASY4 Configuration:

- Probe: ES3DV3 - SN3183; ConvF(5.9, 5.9, 5.9); Calibrated: 08/18/2008
- Sensor-Surface: 4mm (Mechanical Surface Detection)
- Electronics: DAE3 Sn434; Calibrated: 02/09/2009
- Phantom: R#4 Sugar SAM (extended range), Rev.1 (25-Mar-05); Type: SAM v4.0; Serial: TP-1131;
- Measurement SW: DASY4, V4.7 Build 71; Postprocessing SW: SEMCAD, V1.8 Build 186

Left Head Template/Area Scan - Normal (15mm) (7x17x1): Measurement grid: dx=15mm, dy=15mm

Maximum value of SAR (measured) = 0.604 mW/g

Left Head Template/5x5x7 Zoom Scan (<=3GHz) (5x5x7)/Cube 0:

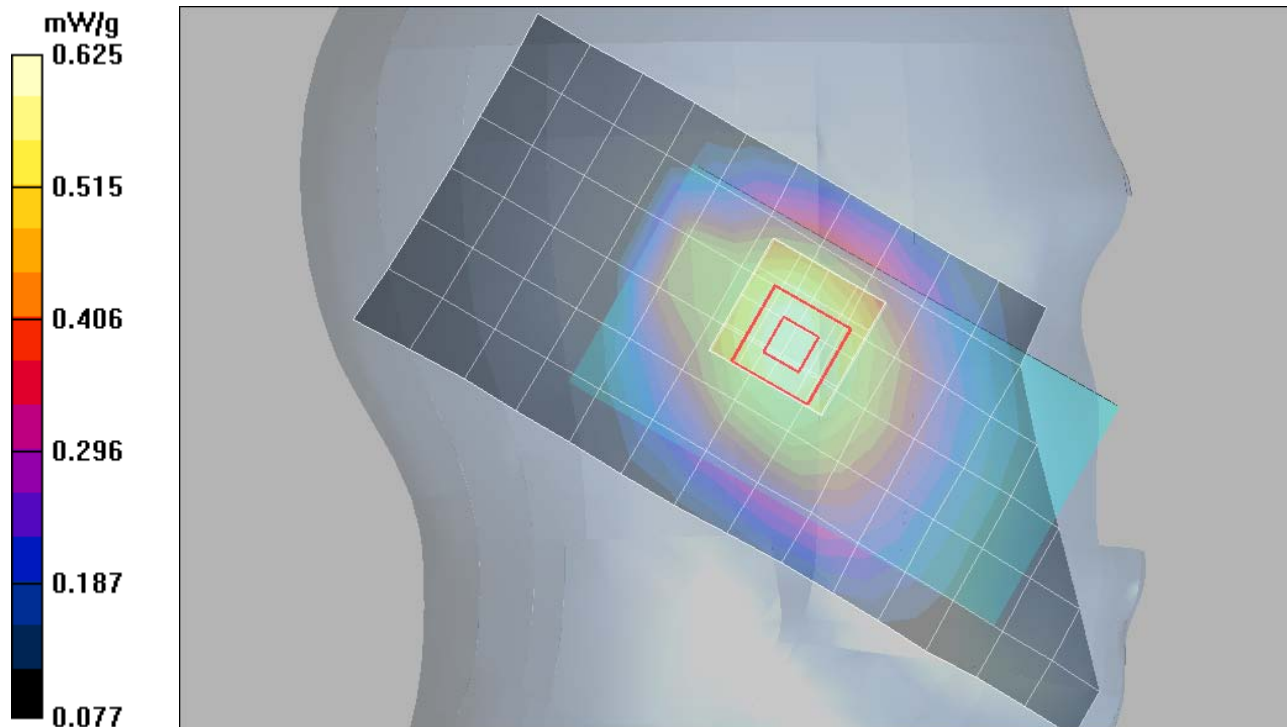
Measurement grid: dx=8mm, dy=8mm, dz=5mm

Reference Value = 26.2 V/m; Power Drift = -0.069 dB

Peak SAR (extrapolated) = 0.702 W/kg

SAR(1 g) = 0.597 mW/g; SAR(10 g) = 0.462 mW/g

Maximum value of SAR (measured) = 0.625 mW/g



Test Laboratory: Motorola CDMA800 Titled (Slider Ret.)

80747706;

Procedure Notes: Pwr Step: Always Up Antenna Position: Internal

Battery Model #: SNN5834A DEVICE POSITION (cheek or rotated): Rotated

Communication System: CDMA 835; Frequency: 836.52 MHz; Channel Number: 384; Duty Cycle: 1:1

Medium: Low Freq Head; Medium parameters used: $f = 835$ MHz; $\sigma = 0.92$ mho/m; $\epsilon_r = 41.6$; $\rho = 1000$ kg/m³

DASY4 Configuration:

- Probe: ES3DV3 - SN3183; ConvF(5.9, 5.9, 5.9); Calibrated: 08/18/2008
- Sensor-Surface: 4mm (Mechanical Surface Detection)
- Electronics: DAE3 Sn434; Calibrated: 02/09/2009
- Phantom: R#4 Sugar SAM (extended range), Rev.1 (25-Mar-05); Type: SAM v4.0; Serial: TP-1131;
- Measurement SW: DASY4, V4.7 Build 80; Postprocessing SW: SEMCAD, V1.8 Build 186

Left Head Template/Area Scan - Normal (15mm) (7x17x1): Measurement grid: dx=15mm, dy=15mm

Maximum value of SAR (measured) = 0.506 mW/g

Left Head Template/5x5x7 Zoom Scan (<=3GHz) (5x5x7)/Cube 0:

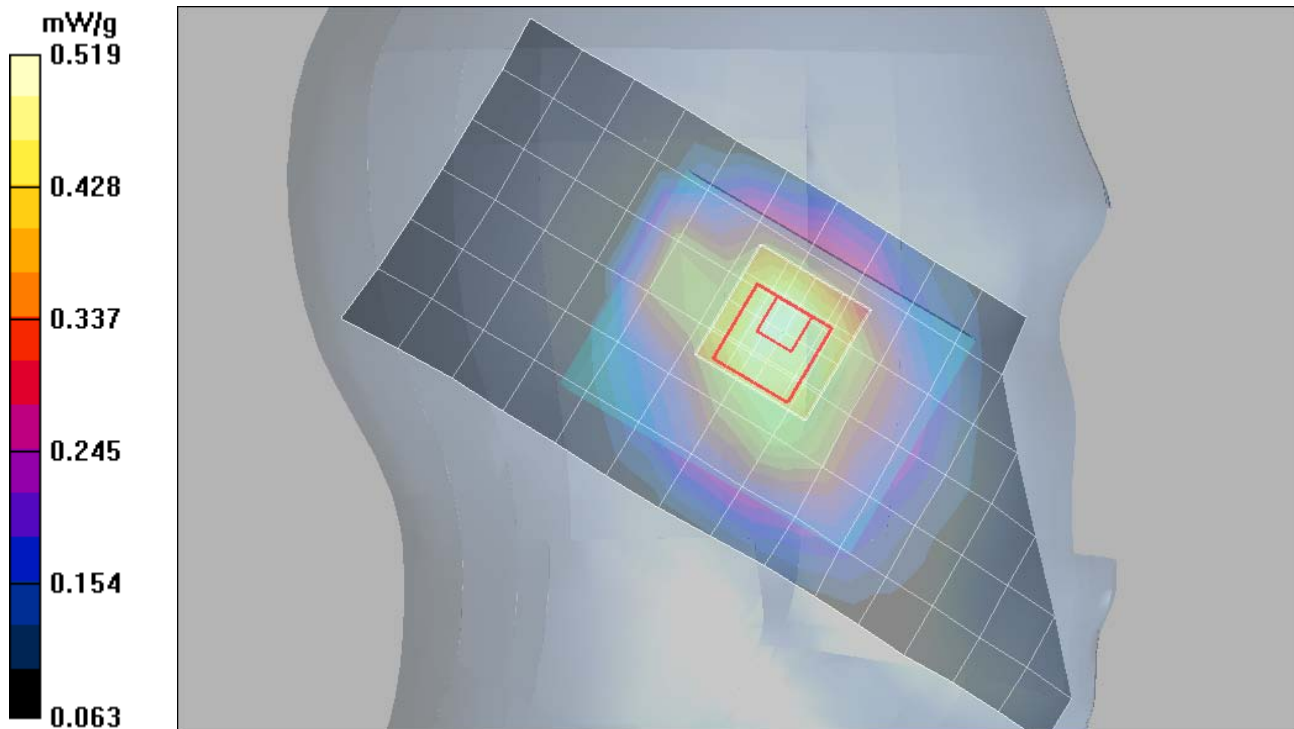
Measurement grid: dx=8mm, dy=8mm, dz=5mm

Reference Value = 22.7 V/m; Power Drift = 0.015 dB

Peak SAR (extrapolated) = 0.597 W/kg

SAR(1 g) = 0.490 mW/g; SAR(10 g) = 0.358 mW/g

Maximum value of SAR (measured) = 0.519 mW/g



Date/Time: 05/10/2009 AM 07:53:57

Test Laboratory: Motorola**CDMA1700 Cheek (Slider Ext.)****80747706;**

Procedure Notes: Pwr Step: Always up Antenna Position: INTERNAL

Battery Model #: SNN5834A DEVICE POSITION: CHEEK

Communication System: CDMA 1700; Frequency: 1732.5 MHz; Channel Number: 450; Duty Cycle: 1:1

Medium: Regular Glycol Head 1730; Medium parameters used: $f = 1730$ MHz; $\sigma = 1.38$ mho/m; $\epsilon_r = 38.6$; $\rho = 1000$ kg/m³

DASY4 Configuration:

- Probe: ES3DV3 - SN3183; ConvF(5.2, 5.2, 5.2); Calibrated: 08/18/2008
- Sensor-Surface: 4mm (Mechanical Surface Detection)
- Electronics: DAE3 Sn434; Calibrated: 02/09/2009
- Phantom: R#4 Glycol SAM (extended range), Rev.1 (25-Mar-05); Type: SAM v4.0; Serial: TP-1250;
- Measurement SW: DASY4, V4.7 Build 80; Postprocessing SW: SEMCAD, V1.8 Build 186

Left Head Template/Area Scan - Normal (15mm) (7x17x1): Measurement grid: dx=15mm, dy=15mm

Maximum value of SAR (measured) = 0.541 mW/g

Left Head Template/5x5x7 Zoom Scan (<=3GHz) (5x5x7)/Cube 0:

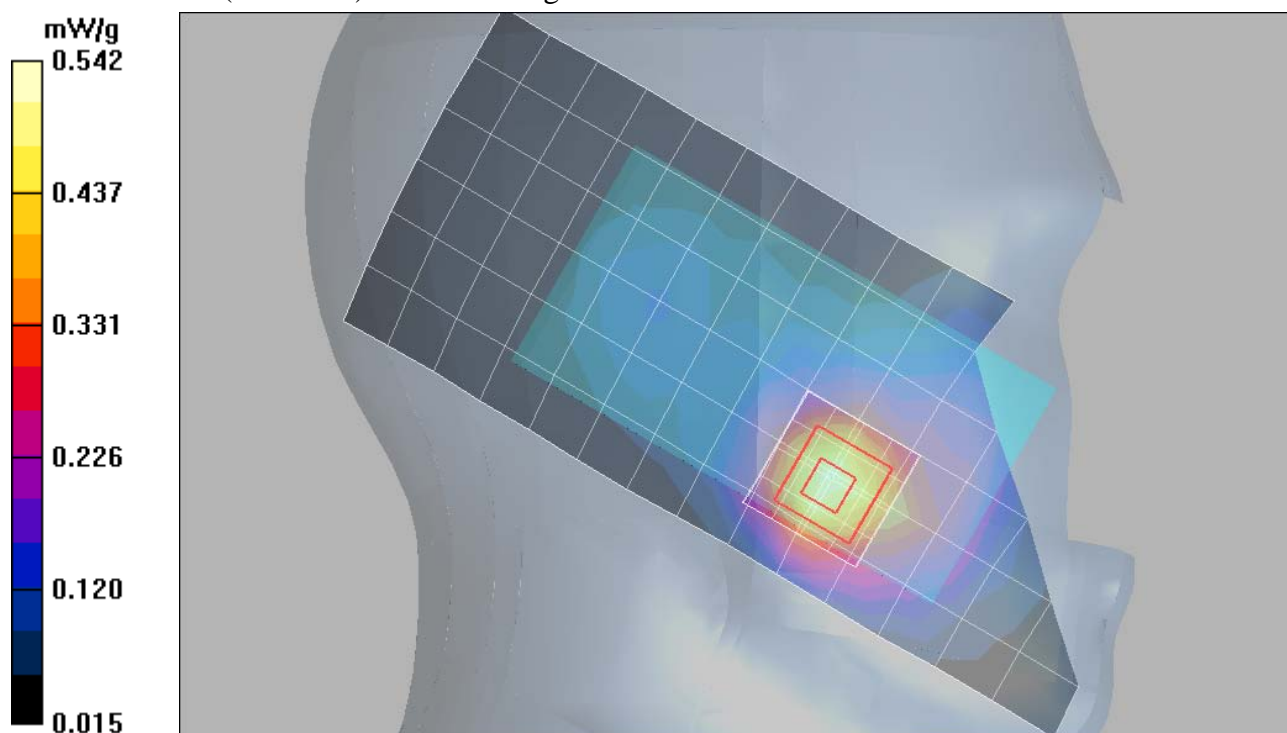
Measurement grid: dx=8mm, dy=8mm, dz=5mm

Reference Value = 18.5 V/m; Power Drift = -0.411 dB

Peak SAR (extrapolated) = 0.735 W/kg

SAR(1 g) = 0.497 mW/g; SAR(10 g) = 0.306 mW/g

Maximum value of SAR (measured) = 0.542 mW/g



Date/Time: 05/10/2009 AM 10:05:30

Test Laboratory: Motorola**CDMA1700 Cheek (Slider Ret.)****80747706;**

Procedure Notes: Pwr Step: Always up Antenna Position: INTERNAL

Battery Model #: SNN5834A DEVICE POSITION: CHEEK

Communication System: CDMA 1700; Frequency: 1732.5 MHz; Channel Number: 450; Duty Cycle: 1:1

Medium: 1730 Glycol Head; Medium parameters used: $f = 1730$ MHz; $\sigma = 1.38$ mho/m; $\epsilon_r = 38.6$; $\rho = 1000$ kg/m³

DASY4 Configuration:

- Probe: ES3DV3 - SN3183; ConvF(5.2, 5.2, 5.2); Calibrated: 08/18/2008
- Sensor-Surface: 4mm (Mechanical Surface Detection)
- Electronics: DAE3 Sn434; Calibrated: 02/09/2009
- Phantom: R#4 Glycol SAM (extended range), Rev.1 (25-Mar-05); Type: SAM v4.0; Serial: TP-1250;
- Measurement SW: DASY4, V4.7 Build 80; Postprocessing SW: SEMCAD, V1.8 Build 186

Right Head Template/Area Scan - Normal (15mm) (7x17x1): Measurement grid: dx=15mm, dy=15mm

Maximum value of SAR (measured) = 0.276 mW/g

Right Head Template/5x5x7 Zoom Scan (<=3GHz) (5x5x7)/Cube 0:

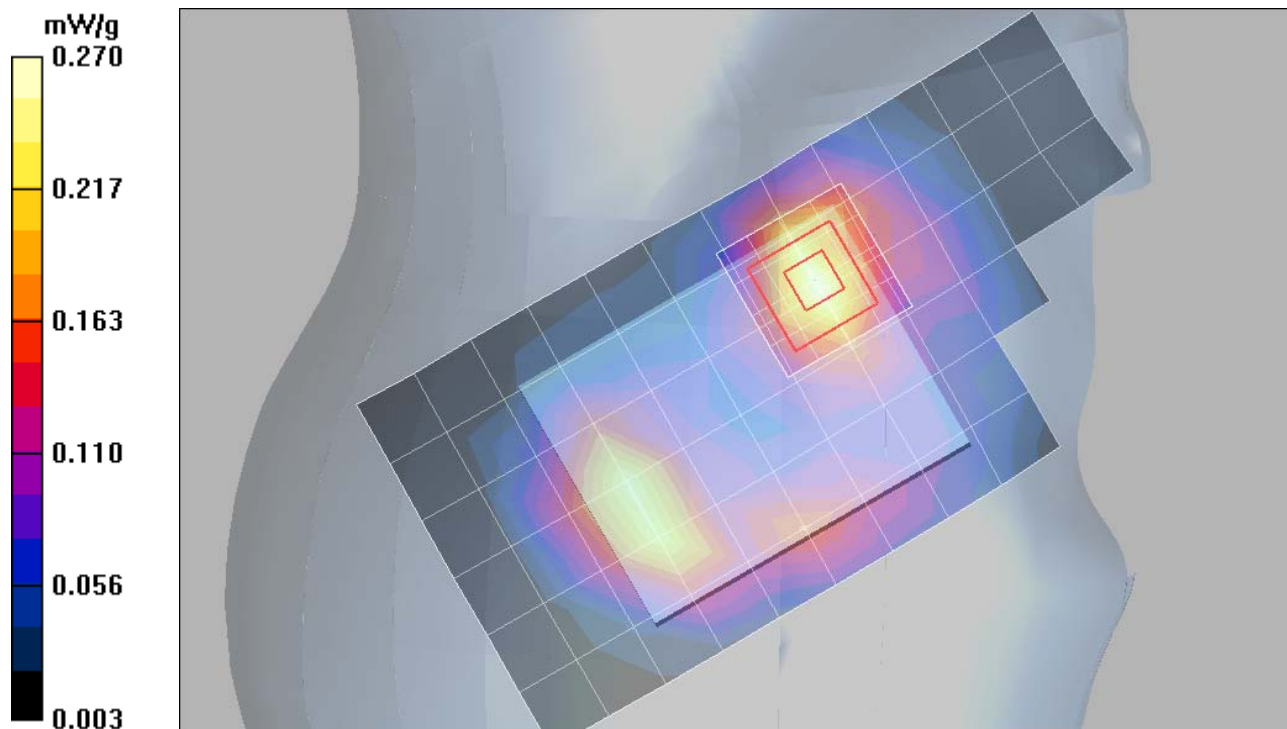
Measurement grid: dx=8mm, dy=8mm, dz=5mm

Reference Value = 12.6 V/m; Power Drift = -0.334 dB

Peak SAR (extrapolated) = 0.351 W/kg

SAR(1 g) = 0.239 mW/g; SAR(10 g) = 0.142 mW/g

Maximum value of SAR (measured) = 0.270 mW/g



Date/Time: 05/10/2009 AM 09:44:55

Test Laboratory: Motorola CDMA1700 Titled (Slider Ext.)**80747706;**

Procedure Notes: Pwr Step: Always up Antenna Position: INTERNAL

Battery Model #: SNN5834A DEVICE POSITION: rotated

Communication System: CDMA 1700; Frequency: 1732.5 MHz; Channel Number: 450; Duty Cycle: 1:1

Medium: 1730 Glycol Head; Medium parameters used: $f = 1730$ MHz; $\sigma = 1.38$ mho/m; $\epsilon_r = 38.6$; $\rho = 1000$ kg/m³

DASY4 Configuration:

- Probe: ES3DV3 - SN3183; ConvF(5.2, 5.2, 5.2); Calibrated: 08/18/2008
- Sensor-Surface: 4mm (Mechanical Surface Detection)
- Electronics: DAE3 Sn434; Calibrated: 02/09/2009
- Phantom: R#4 Glycol SAM (extended range), Rev.1 (25-Mar-05); Type: SAM v4.0; Serial: TP-1250;
- Measurement SW: DASY4, V4.7 Build 80; Postprocessing SW: SEMCAD, V1.8 Build 186

Right Head Template/Area Scan - Normal (15mm) (7x17x1): Measurement grid: dx=15mm, dy=15mm

Maximum value of SAR (measured) = 0.374 mW/g

Right Head Template/5x5x7 Zoom Scan (<=3GHz) (5x5x7)/Cube 0:

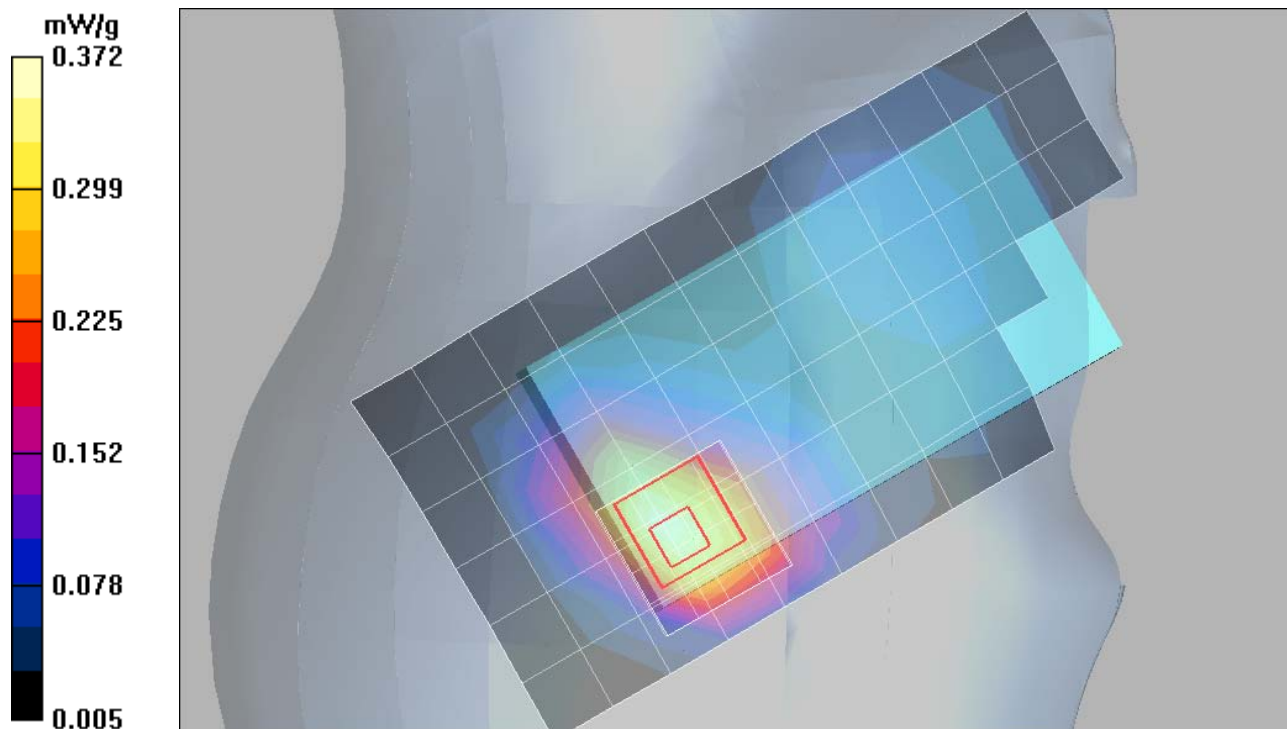
Measurement grid: dx=8mm, dy=8mm, dz=5mm

Reference Value = 14.6 V/m; Power Drift = 0.018 dB

Peak SAR (extrapolated) = 0.540 W/kg

SAR(1 g) = 0.352 mW/g; SAR(10 g) = 0.219 mW/g

Maximum value of SAR (measured) = 0.372 mW/g



Date/Time: 05/10/2009 AM 10:23:35

Test Laboratory: Motorola**CDMA1700 Titled (Slider Ret.)****80747706;**

Procedure Notes: Pwr Step: Always up Antenna Position: INTERNAL

Battery Model #: SNN5834A DEVICE POSITION: rotated

Communication System: CDMA 1700; Frequency: 1732.5 MHz; Channel Number: 450; Duty Cycle: 1:1

Medium: 1730 Glycol Head; Medium parameters used: $f = 1730$ MHz; $\sigma = 1.38$ mho/m; $\epsilon_r = 38.6$; $\rho = 1000$ kg/m³

DASY4 Configuration:

- Probe: ES3DV3 - SN3183; ConvF(5.2, 5.2, 5.2); Calibrated: 08/18/2008
- Sensor-Surface: 4mm (Mechanical Surface Detection)
- Electronics: DAE3 Sn434; Calibrated: 02/09/2009
- Phantom: R#4 Glycol SAM (extended range), Rev.1 (25-Mar-05); Type: SAM v4.0; Serial: TP-1250;
- Measurement SW: DASY4, V4.7 Build 80; Postprocessing SW: SEMCAD, V1.8 Build 186

Right Head Template/Area Scan - Normal (15mm) (7x17x1): Measurement grid: dx=15mm, dy=15mm

Maximum value of SAR (measured) = 0.573 mW/g

Right Head Template/5x5x7 Zoom Scan (<=3GHz) (5x5x7)/Cube 0:

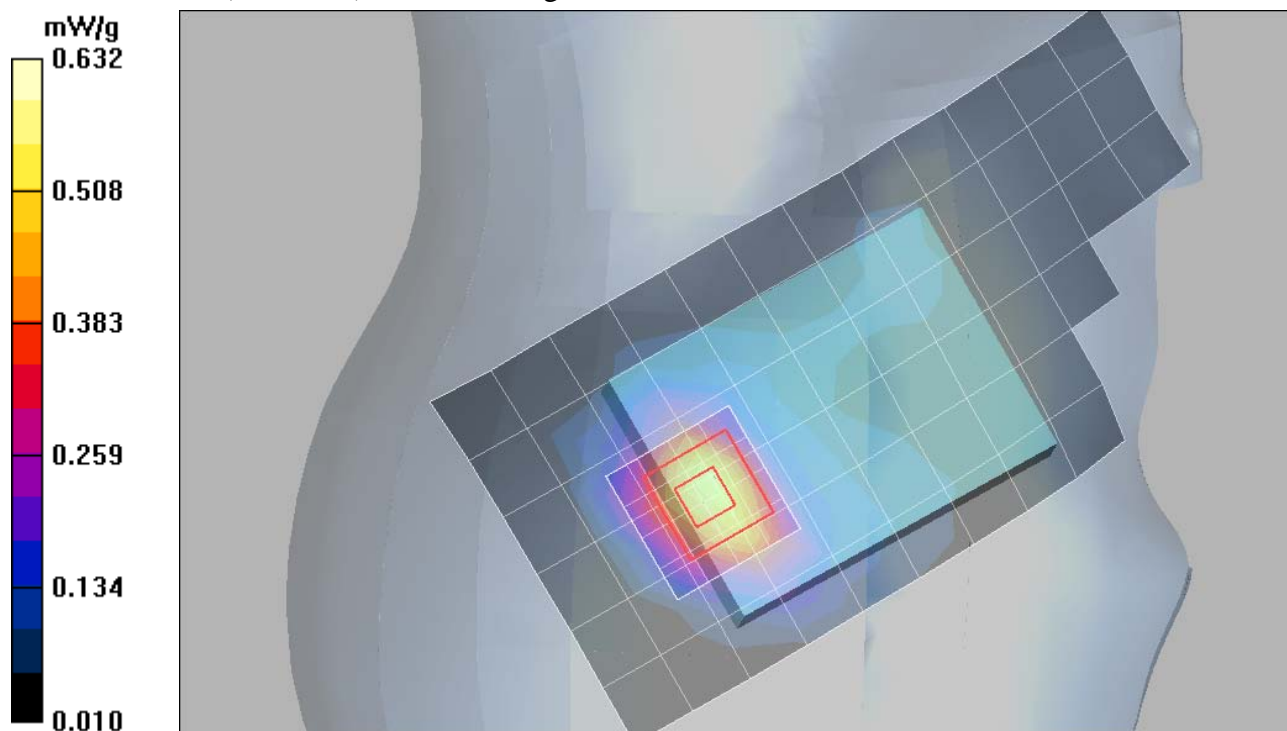
Measurement grid: dx=8mm, dy=8mm, dz=5mm

Reference Value = 18.9 V/m; Power Drift = -0.010 dB

Peak SAR (extrapolated) = 0.911 W/kg

SAR(1 g) = 0.567 mW/g; SAR(10 g) = 0.318 mW/g

Maximum value of SAR (measured) = 0.632 mW/g



Test Laboratory: Motorola**CDMA1900 Cheek (Slider Ext.)****80747706;**

Procedure Notes: Pwr Step: Always Up Antenna Position: Internal

Battery Model #: SNN5834A DEVICE POSITION (cheek or rotated): Cheek

Communication System: CDMA 1900; Frequency: 1880 MHz; Channel Number: 600; Duty Cycle: 1:1

Medium: Backup Glycol Head 1750/1880; Medium parameters used: $f = 1880$ MHz; $\sigma = 1.47$ mho/m; $\epsilon_r = 38.5$; $\rho = 1000$ kg/m³

DASY4 Configuration:

- Probe: ES3DV3 - SN3183; ConvF(5.2, 5.2, 5.2); Calibrated: 08/18/2008
- Sensor-Surface: 4mm (Mechanical Surface Detection)
- Electronics: DAE3 Sn434; Calibrated: 02/09/2009
- Phantom: R#4 Glycol SAM (extended range), Rev.1 (25-Mar-05); Type: SAM v4.0; Serial: TP-1250;
- Measurement SW: DASY4, V4.7 Build 71; Postprocessing SW: SEMCAD, V1.8 Build 186

Left Head Template/Area Scan - Normal (15mm) (7x17x1): Measurement grid: dx=15mm, dy=15mm

Maximum value of SAR (measured) = 0.086 mW/g

Left Head Template/5x5x7 Zoom Scan (<=3GHz) (5x5x7)/Cube 0:

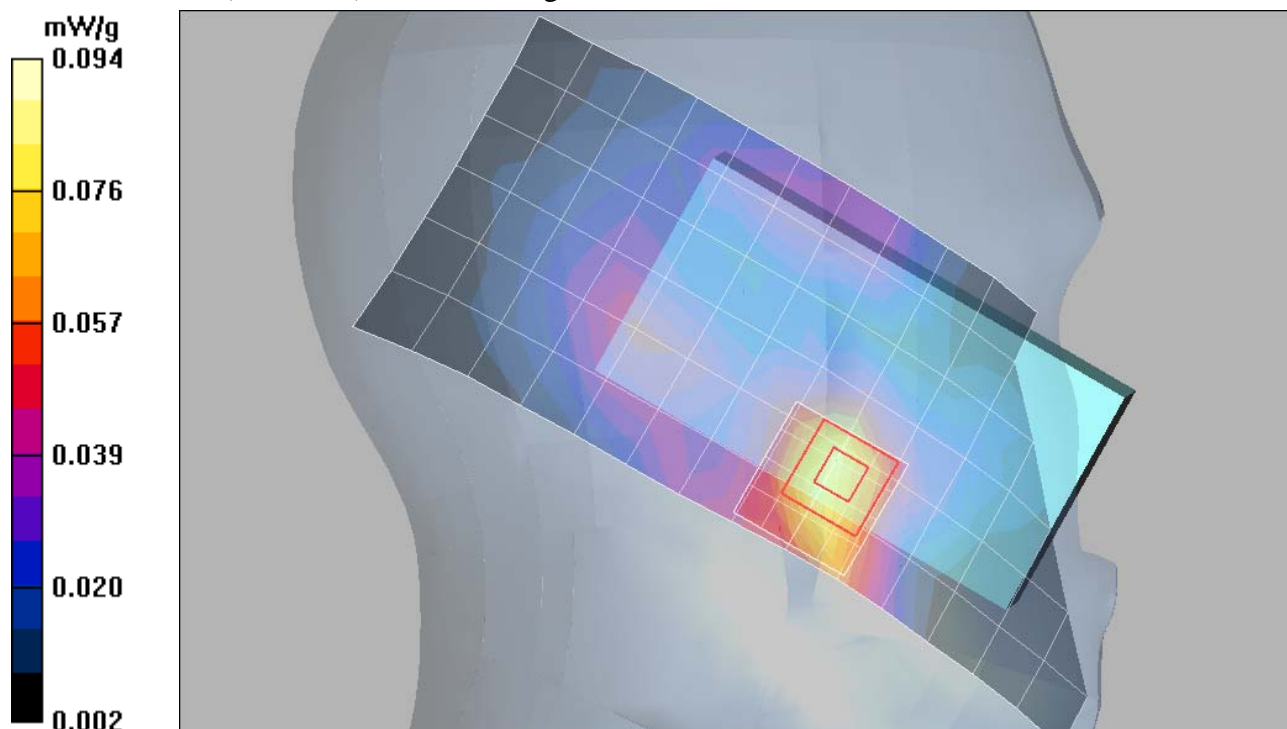
Measurement grid: dx=8mm, dy=8mm, dz=5mm

Reference Value = 7.02 V/m; Power Drift = 0.046 dB

Peak SAR (extrapolated) = 0.128 W/kg

SAR(1 g) = 0.085 mW/g; SAR(10 g) = 0.051 mW/g

Maximum value of SAR (measured) = 0.094 mW/g



Date/Time: 04/29/2009 PM 10:11:46

Test Laboratory: Motorola**CDMA1900 Cheek (Slider Ret.)****80747706;**

Procedure Notes: Pwr Step: Always up Antenna Position: Internal

Battery Model #: SNN5834A DEVICE POSITION (cheek or rotated): Cheek

Communication System: CDMA 1900; Frequency: 1880 MHz; Channel Number: 600; Duty Cycle: 1:1

Medium: Regular Glycol Head 1750/1880; Medium parameters used: $f = 1880$ MHz; $\sigma = 1.47$ mho/m; $\epsilon_r = 40.1$; $\rho = 1000$ kg/m³

DASY4 Configuration:

- Probe: ES3DV3 - SN3183; ConvF(5.2, 5.2, 5.2); Calibrated: 08/18/2008
- Sensor-Surface: 4mm (Mechanical Surface Detection)
- Electronics: DAE3 Sn434; Calibrated: 02/09/2009
- Phantom: R#4 Glycol SAM (extended range), Rev.1 (25-Mar-05); Type: SAM v4.0; Serial: TP-1250;
- Measurement SW: DASY4, V4.7 Build 71; Postprocessing SW: SEMCAD, V1.8 Build 186

Right Head Template/Area Scan - Normal (15mm) (7x17x1): Measurement grid: dx=15mm, dy=15mm

Maximum value of SAR (measured) = 0.516 mW/g

Right Head Template/5x5x7 Zoom Scan (<=3GHz) (5x5x7)/Cube 0:

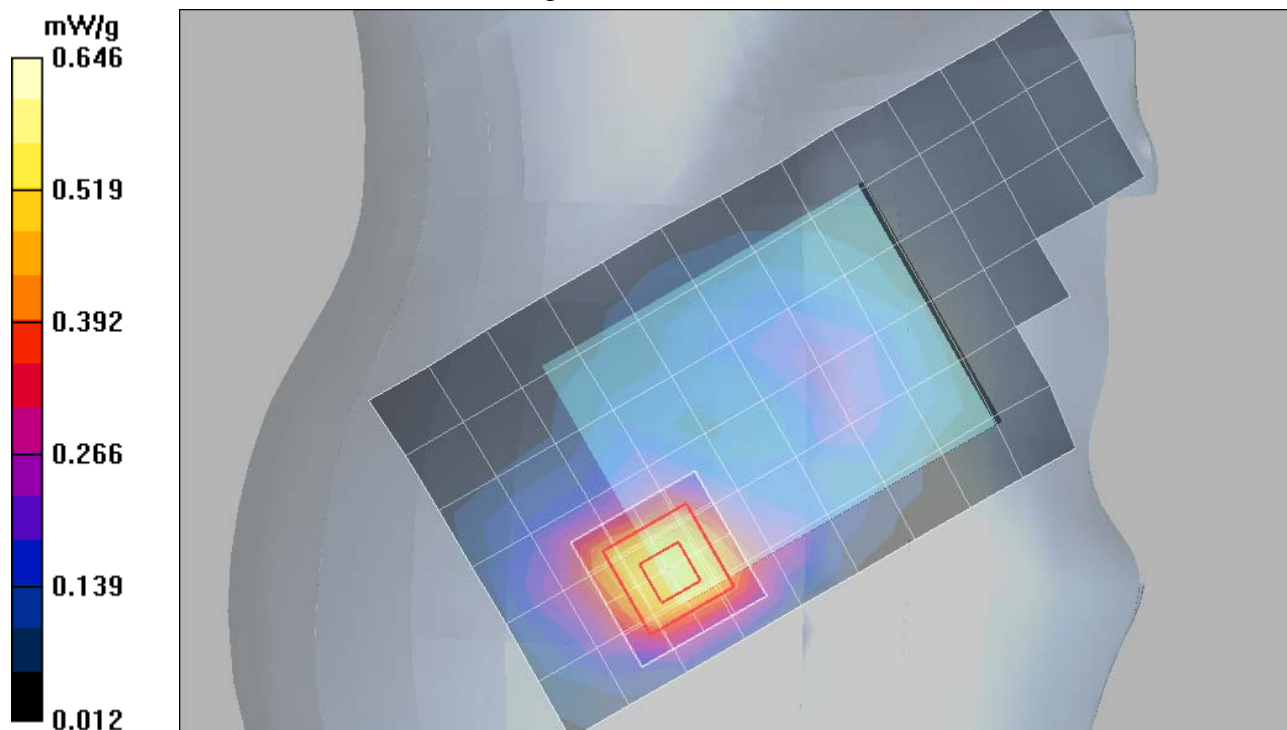
Measurement grid: dx=8mm, dy=8mm, dz=5mm

Reference Value = 16.5 V/m; Power Drift = -0.161 dB

Peak SAR (extrapolated) = 0.986 W/kg

SAR(1 g) = 0.583 mW/g; SAR(10 g) = 0.322 mW/g

Maximum value of SAR (measured) = 0.646 mW/g



Date/Time: 04/30/2009 PM 08:13:20

Test Laboratory: Motorola**CDMA1900 Tilted (Slider Ext.)****80747706;**

Procedure Notes: Pwr Step: Always up Antenna Position: Internal

Battery Model #: SNN5834A DEVICE POSITION (cheek or rotated): Rotated

Communication System: CDMA 1900; Frequency: 1880 MHz; Channel Number: 600; Duty Cycle: 1:1

Medium: Backup Glycol Head 1750/1880; Medium parameters used: $f = 1880$ MHz; $\sigma = 1.47$ mho/m; $\epsilon_r = 38.5$; $\rho = 1000$ kg/m³

DASY4 Configuration:

- Probe: ES3DV3 - SN3183; ConvF(5.2, 5.2, 5.2); Calibrated: 08/18/2008
- Sensor-Surface: 4mm (Mechanical Surface Detection)
- Electronics: DAE3 Sn434; Calibrated: 02/09/2009
- Phantom: R#4 Glycol SAM (extended range), Rev.1 (25-Mar-05); Type: SAM v4.0; Serial: TP-1250;
- Measurement SW: DASY4, V4.7 Build 71; Postprocessing SW: SEMCAD, V1.8 Build 186

Right Head Template/Area Scan - Normal (15mm) (7x17x1): Measurement grid: dx=15mm, dy=15mm

Maximum value of SAR (measured) = 0.123 mW/g

Right Head Template/5x5x7 Zoom Scan (<=3GHz) (5x5x7)/Cube 0:

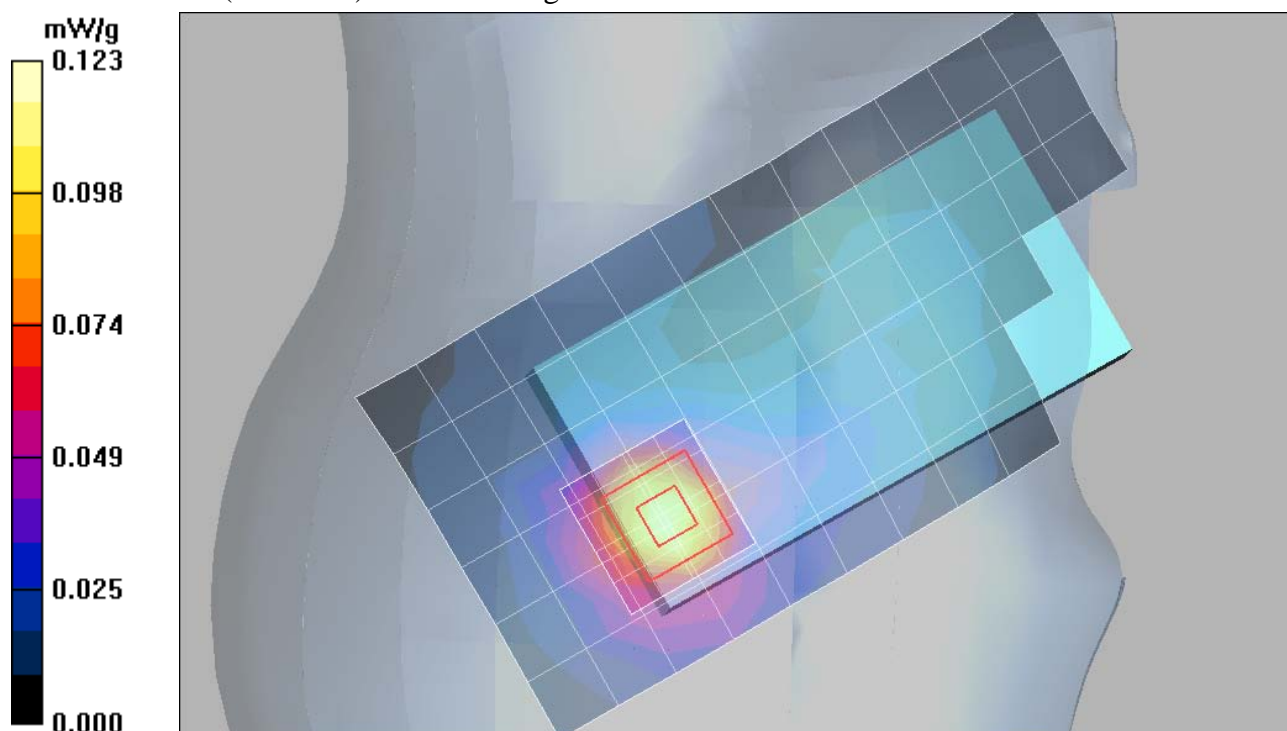
Measurement grid: dx=8mm, dy=8mm, dz=5mm

Reference Value = 7.50 V/m; Power Drift = 0.023 dB

Peak SAR (extrapolated) = 0.164 W/kg

SAR(1 g) = 0.109 mW/g; SAR(10 g) = 0.063 mW/g

Maximum value of SAR (measured) = 0.113 mW/g



Date/Time: 04/29/2009 PM 10:59:14

Test Laboratory: Motorola**CDMA1900 Tilted (Slider Ret.)****80747706;**

Procedure Notes: Pwr Step: Always up Antenna Position: Internal

Battery Model #: SNN5834A DEVICE POSITION (cheek or rotated): Rotated

Communication System: CDMA 1900; Frequency: 1880 MHz; Channel Number: 600; Duty Cycle: 1:1

Medium: Regular Glycol Head 1750/1880; Medium parameters used: $f = 1880$ MHz; $\sigma = 1.47$ mho/m; $\epsilon_r = 40.1$; $\rho = 1000$ kg/m³

DASY4 Configuration:

- Probe: ES3DV3 - SN3183; ConvF(5.2, 5.2, 5.2); Calibrated: 08/18/2008
- Sensor-Surface: 4mm (Mechanical Surface Detection)
- Electronics: DAE3 Sn434; Calibrated: 02/09/2009
- Phantom: R#4 Glycol SAM (extended range), Rev.1 (25-Mar-05); Type: SAM v4.0; Serial: TP-1250;
- Measurement SW: DASY4, V4.7 Build 71; Postprocessing SW: SEMCAD, V1.8 Build 186

Right Head Template/Area Scan - Normal (15mm) (7x17x1): Measurement grid: dx=15mm, dy=15mm

Maximum value of SAR (measured) = 0.770 mW/g

Right Head Template/5x5x7 Zoom Scan (<=3GHz) (5x5x7)/Cube 0:

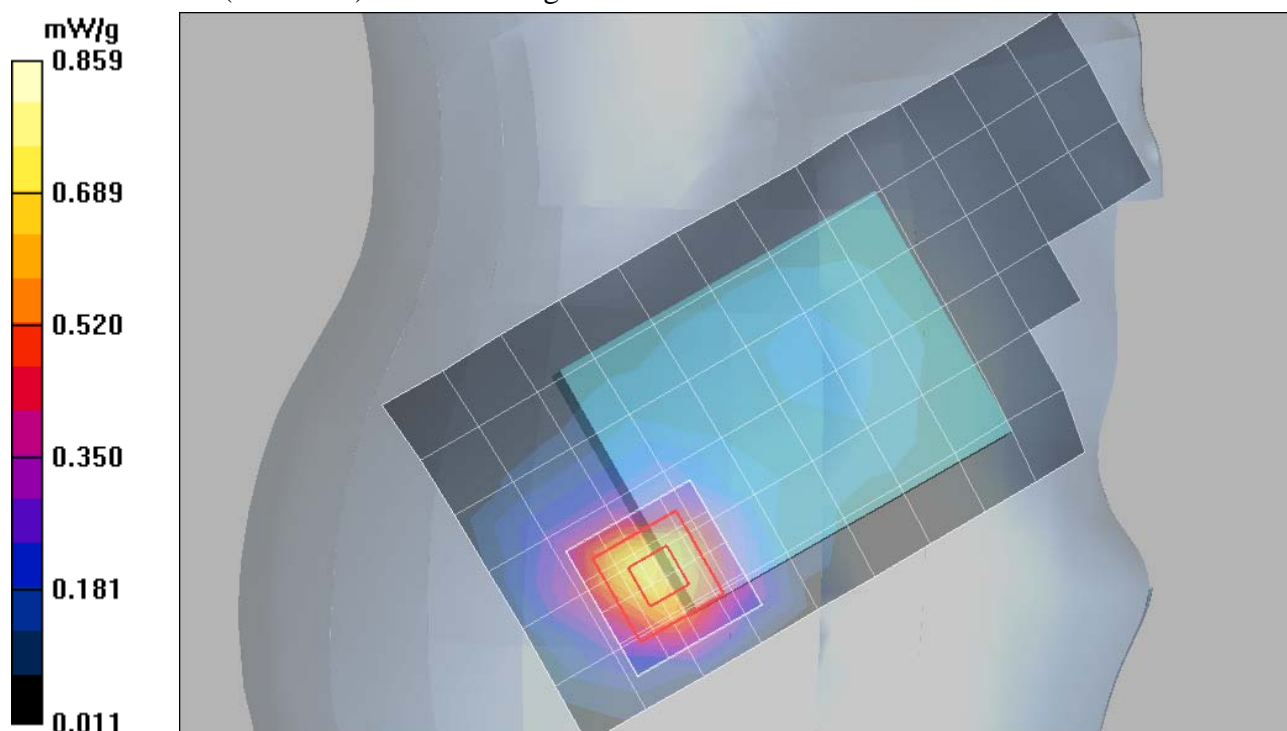
Measurement grid: dx=8mm,dy=8mm, dz=5mm

Reference Value = 19.6 V/m; Power Drift = -0.171 dB

Peak SAR (extrapolated) = 1.35 W/kg

SAR(1 g) = 0.764 mW/g; SAR(10 g) = 0.405 mW/g

Maximum value of SAR (measured) = 0.859 mW/g



Appendix 3

SAR distribution plots for Body Worn Configuration

Test Laboratory: Motorola**CDMA800 BodyWorn****80747706;**

Procedure Notes: Pwr Step: Always Up Antenna Position: Internal

Battery Model #: SNN5834A Device Position: Back of Phone 25mm from Phantom

Communication System: CDMA 835; Frequency: 836.52 MHz; Channel Number: 384; Duty Cycle: 1:1

Medium: Low Freq Body; Medium parameters used: $f = 835$ MHz; $\sigma = 0.99$ mho/m; $\epsilon_r = 56.2$; $\rho = 1000$ kg/m³

DASY4 Configuration:

- Probe: ET3DV6 - SN1524; ConvF(5.14, 5.14, 5.14); Calibrated: 02/12/2009
- Sensor-Surface: 4mm (Mechanical Surface Detection)
- Electronics: DAE4 Sn650; Calibrated: 08/13/2008
- Phantom: R1_Section 2, Amy Twin, Rev2 (23-June-04); Type: Amy Twin Flat; Serial: n/a;
- Measurement SW: DASY4, V4.7 Build 71; Postprocessing SW: SEMCAD, V1.8 Build 186

Amy Twin Phone Template/Area Scan - Normal Body (15mm) (13x7x1):

Measurement grid: dx=15mm, dy=15mm

Maximum value of SAR (measured) = 0.476 mW/g

Amy Twin Phone Template/5x5x7 Zoom Scan (<=3GHz) (5x5x7)/Cube 0:

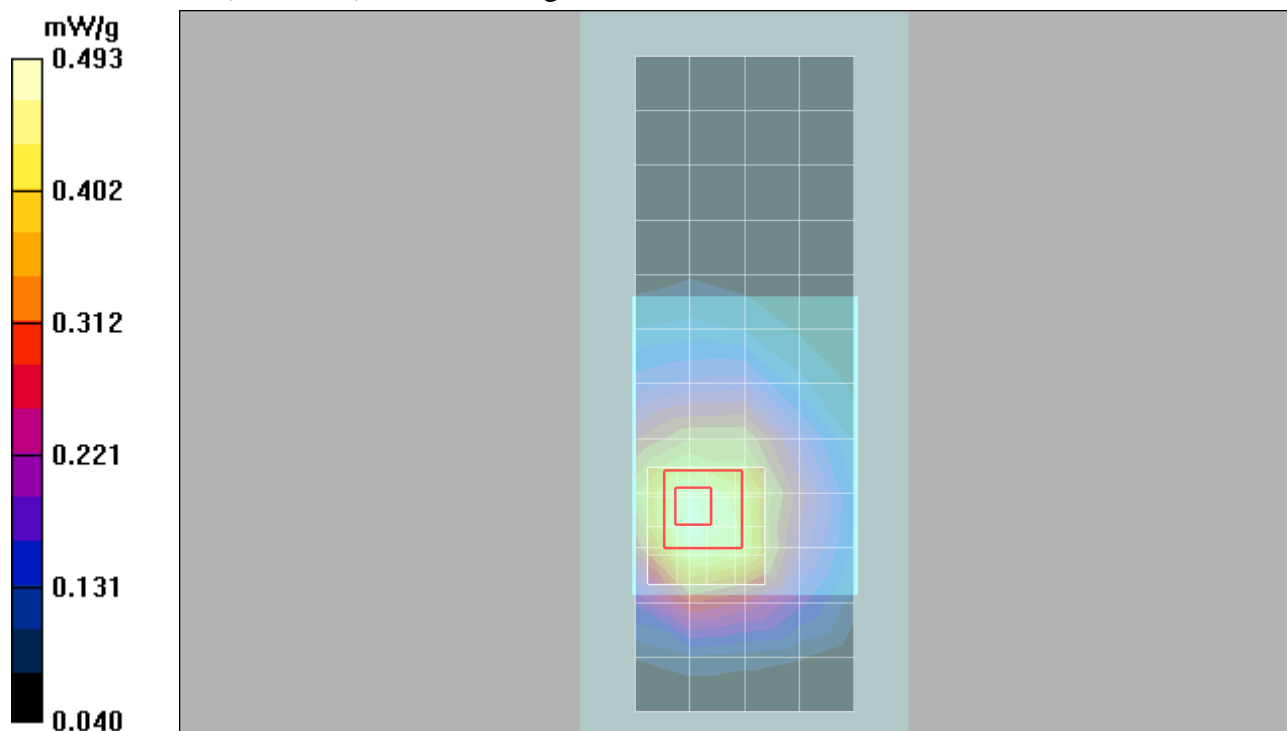
Measurement grid: dx=8mm, dy=8mm, dz=5mm

Reference Value = 20.9 V/m; Power Drift = -0.152 dB

Peak SAR (extrapolated) = 0.665 W/kg

SAR(1 g) = 0.471 mW/g; SAR(10 g) = 0.331 mW/g

Maximum value of SAR (measured) = 0.493 mW/g



Test Laboratory: Motorola CDMA1700 BodyWorn

80747706;

Procedure Notes: Pwr Step: Always up Antenna Position: INTERNAL

Battery Model #: SNN5834A Device Position: Back of phone 25mm away from phantom

Communication System: CDMA 1700; Frequency: 1711.25 MHz; Channel Number: 25; Duty Cycle: 1:1

Medium: 1730 Glycol Body; Medium parameters used: $f = 1730$ MHz; $\sigma = 1.53$ mho/m; $\epsilon_r = 51.2$; $\rho = 1000$ kg/m³

DASY4 Configuration:

- Probe: ES3DV3 - SN3183; ConvF(4.87, 4.87, 4.87); Calibrated: 08/18/2008
- Sensor-Surface: 4mm (Mechanical Surface Detection)
- Electronics: DAE3 Sn434; Calibrated: 02/09/2009
- Phantom: R4 : Sect.1, Amy Twin; Type: Amy Twin Flat; Serial: n/a;
- Measurement SW: DASY4, V4.7 Build 80; Postprocessing SW: SEMCAD, V1.8 Build 186

Amy Twin Phone Template/Area Scan - Normal Body (15mm) (13x7x1): Measurement grid: dx=15mm, dy=15mm

Maximum value of SAR (measured) = 1.56 mW/g

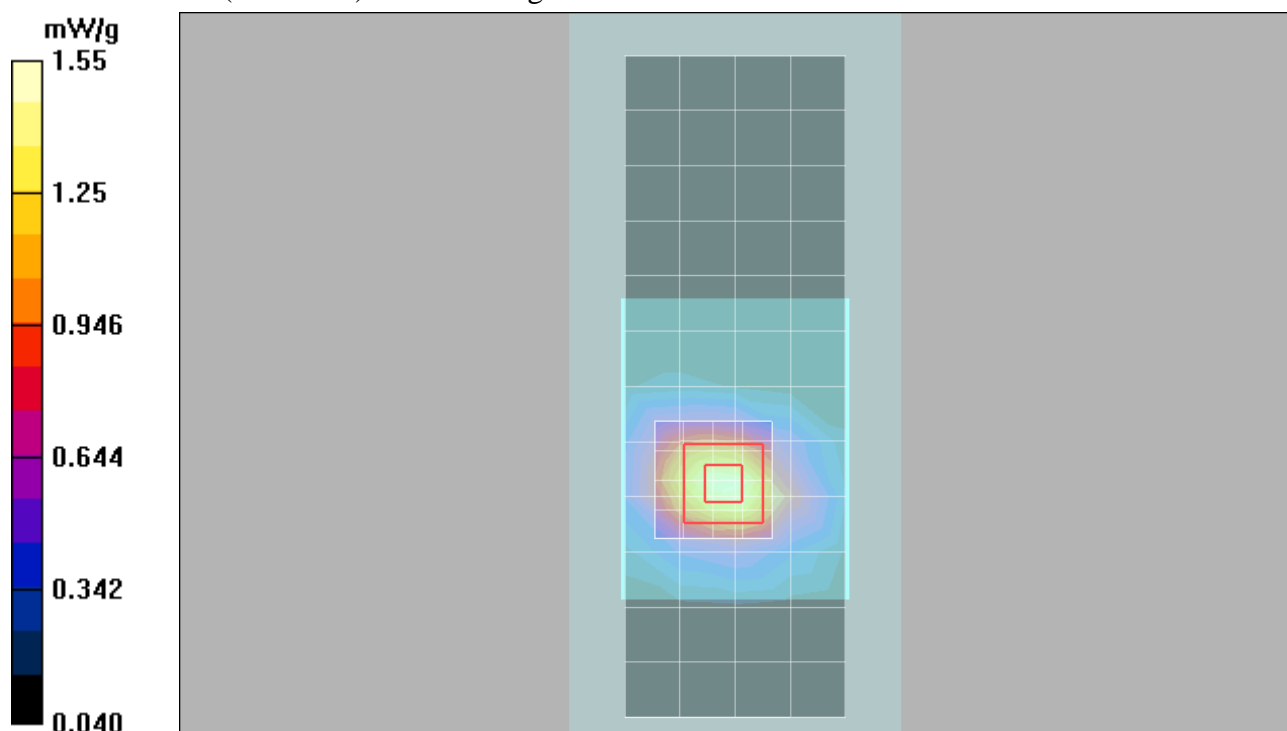
Amy Twin Phone Template/5x5x7 Zoom Scan (<=3GHz) (5x5x7)/Cube 0: Measurement grid: dx=8mm, dy=8mm, dz=5mm

Reference Value = 33.0 V/m; Power Drift = -0.170 dB

Peak SAR (extrapolated) = 2.26 W/kg

SAR(1 g) = 1.44 mW/g; SAR(10 g) = 0.845 mW/g

Maximum value of SAR (measured) = 1.55 mW/g



Test Laboratory: Motorola CDMA1900 BodyWorn

80747706;

Procedure Notes: Pwr Step: Always up Antenna Position: INTERNAL

Battery Model #: SNN5834A Device Position: Back of phone 25mm away from phantom

Communication System: CDMA 1900; Frequency: 1880 MHz; Channel Number: 600; Duty Cycle: 1:1

Medium: Regular Glycol Body 1750/1880; Medium parameters used: $f = 1880$ MHz; $\sigma = 1.58$ mho/m; $\epsilon_r = 51.4$; $\rho = 1000$ kg/m³

DASY4 Configuration:

- Probe: ES3DV3 - SN3183; ConvF(4.87, 4.87, 4.87); Calibrated: 08/18/2008
- Sensor-Surface: 4mm (Mechanical Surface Detection)
- Electronics: DAE3 Sn434; Calibrated: 02/09/2009
- Phantom: R4 : Sect.1, Amy Twin; Type: Amy Twin Flat; Serial: n/a;
- Measurement SW: DASY4, V4.7 Build 71; Postprocessing SW: SEMCAD, V1.8 Build 186

Amy Twin Phone Template/Area Scan - Normal Body (15mm) (13x7x1):

Measurement grid: dx=15mm, dy=15mm

Maximum value of SAR (measured) = 0.208 mW/g

Amy Twin Phone Template/5x5x7 Zoom Scan (<=3GHz) (5x5x7)/Cube 0:

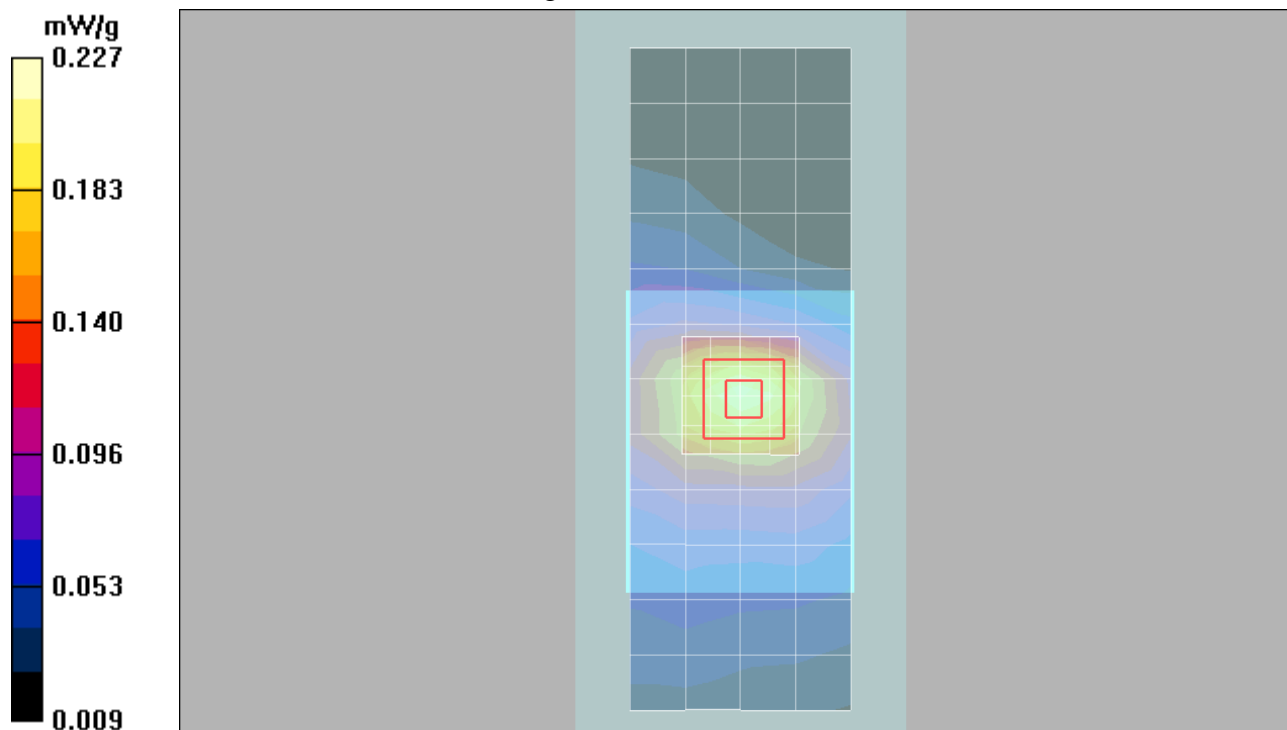
Measurement grid: dx=8mm, dy=8mm, dz=5mm

Reference Value = 11.0 V/m; Power Drift = -0.011 dB

Peak SAR (extrapolated) = 0.318 W/kg

SAR(1 g) = 0.208 mW/g; SAR(10 g) = 0.129 mW/g

Maximum value of SAR (measured) = 0.227 mW/g



Test Laboratory: Motorola 2450 Bluetooth Bodyworn

80747706;

Procedure Notes: Pwr Step: class 1 on N4010A Antenna Position: INTERNAL

Battery Model #: SNN5834A Device Position: Back of phone 25mm away from phantom

Communication System: Bluetooth; Frequency: 2441 MHz; Channel Number: 39; Duty Cycle: 1:1

Medium: 2450 Glycol Body; Medium parameters used: $f = 2450$ MHz; $\sigma = 2.01$ mho/m; $\epsilon_r = 53.6$; $\rho = 1000$ kg/m³

DASY4 Configuration:

- Probe: ES3DV3 - SN3183; ConvF(4.11, 4.11, 4.11); Calibrated: 08/18/2008
- Sensor-Surface: 4mm (Mechanical Surface Detection)
- Electronics: DAE3 Sn434; Calibrated: 02/09/2009
- Phantom: R4 : Sect.1, Amy Twin; Type: Amy Twin Flat; Serial: n/a;
- Measurement SW: DASY4, V4.7 Build 71; Postprocessing SW: SEMCAD, V1.8 Build 186

Amy Twin Phone Template/Area Scan - Normal Body (15mm) (13x7x1):

Measurement grid: dx=15mm, dy=15mm

Maximum value of SAR (measured) = 0.002 mW/g

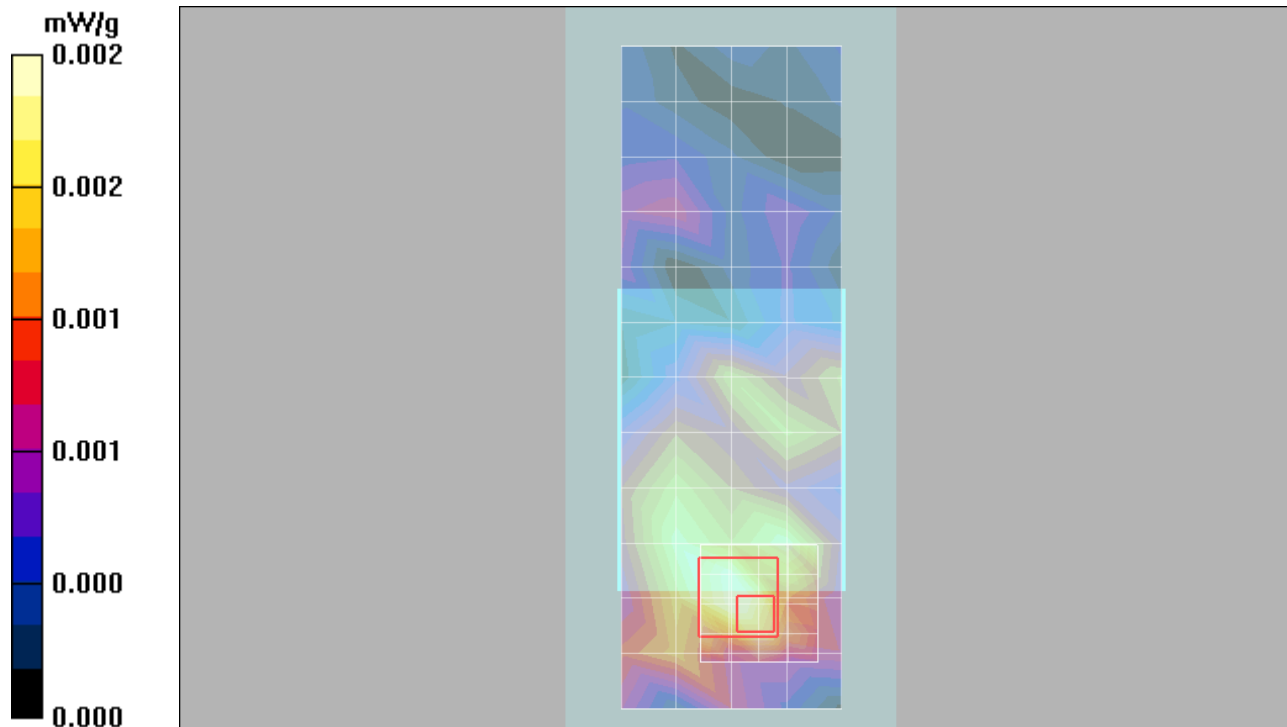
Amy Twin Phone Template/5x5x7 Zoom Scan (<=3GHz) (5x5x7)/Cube 0:

Measurement grid: dx=8mm, dy=8mm, dz=5mm

Reference Value = 0.636 V/m; Power Drift = -0.130 dB

Peak SAR (extrapolated) = 0.004 W/kg

SAR(1 g) = 0.0019 mW/g; SAR(10 g) = 0.00105 mW/g



Appendix 4
Probe Calibration Certificate



Accredited by the Swiss Accreditation Service (SAS)
The Swiss Accreditation Service is one of the signatories to the EA
Multilateral Agreement for the recognition of calibration certificates

Accreditation No.: **SCS 108**

Client **Motorola MDb**

Certificate No: **ES3-3183_Aug08**

CALIBRATION CERTIFICATE

Object **ES3DV3 - SN:3183**

Calibration procedure(s) **QA CAL-01.v6 and QA CAL-23.v3
Calibration procedure for dosimetric E-field probes**

Calibration date: **August 18, 2008**

Condition of the calibrated item **In Tolerance**

This calibration certificate documents the traceability to national standards, which realize the physical units of measurements (SI).
The measurements and the uncertainties with confidence probability are given on the following pages and are part of the certificate.

All calibrations have been conducted in the closed laboratory facility: environment temperature (22 ± 3)°C and humidity < 70%.

Calibration Equipment used (M&TE critical for calibration)

Primary Standards	ID #	Cal Date (Certificate No.)	Scheduled Calibration
Power meter E4419B	GB41293874	1-Apr-08 (No. 217-00788)	Apr-09
Power sensor E4412A	MY41495277	1-Apr-08 (No. 217-00788)	Apr-09
Power sensor E4412A	MY41498087	1-Apr-08 (No. 217-00788)	Apr-09
Reference 3 dB Attenuator	SN: S5054 (3c)	1-Jul-08 (No. 217-00865)	Jul-09
Reference 20 dB Attenuator	SN: S5086 (20b)	31-Mar-08 (No. 217-00787)	Apr-09
Reference 30 dB Attenuator	SN: S5129 (30b)	1-Jul-08 (No. 217-00866)	Jul-09
Reference Probe ES3DV2	SN: 3013	2-Jan-08 (No. ES3-3013_Jan08)	Jan-09
DAE4	SN: 660	3-Sep-07 (No. DAE4-660_Sep07)	Sep-08

Secondary Standards	ID #	Check Date (in house)	Scheduled Check
RF generator HP 8648C	US3642U01700	4-Aug-99 (in house check Oct-07)	In house check: Oct-09
Network Analyzer HP 8753E	US37390585	18-Oct-01 (in house check Oct-07)	In house check: Oct-08

	Name	Function	Signature
Calibrated by:	Katja Pokovic	Technical Manager	
Approved by:	Niels Kuster	Quality Manager	

Issued: August 19, 2008

This calibration certificate shall not be reproduced except in full without written approval of the laboratory.



Accredited by the Swiss Accreditation Service (SAS)
The Swiss Accreditation Service is one of the signatories to the EA
Multilateral Agreement for the recognition of calibration certificates

Accreditation No.: **SCS 108**

Glossary:

TSL	tissue simulating liquid
NORM _{x,y,z}	sensitivity in free space
ConvF	sensitivity in TSL / NORM _{x,y,z}
DCP	diode compression point
Polarization φ	φ rotation around probe axis
Polarization ϑ	ϑ rotation around an axis that is in the plane normal to probe axis (at measurement center), i.e., $\vartheta = 0$ is normal to probe axis

Calibration is Performed According to the Following Standards:

- IEEE Std 1528-2003, "IEEE Recommended Practice for Determining the Peak Spatial-Averaged Specific Absorption Rate (SAR) in the Human Head from Wireless Communications Devices: Measurement Techniques", December 2003
- IEC 62209-1, "Procedure to measure the Specific Absorption Rate (SAR) for hand-held devices used in close proximity to the ear (frequency range of 300 MHz to 3 GHz)", February 2005

Methods Applied and Interpretation of Parameters:

- NORM_{x,y,z}**: Assessed for E-field polarization $\vartheta = 0$ ($f \leq 900$ MHz in TEM-cell; $f > 1800$ MHz: R22 waveguide). NORM_{x,y,z} are only intermediate values, i.e., the uncertainties of NORM_{x,y,z} does not effect the E²-field uncertainty inside TSL (see below ConvF).
- NORM(f)_{x,y,z}** = NORM_{x,y,z} * frequency_response (see Frequency Response Chart). This linearization is implemented in DASY4 software versions later than 4.2. The uncertainty of the frequency response is included in the stated uncertainty of ConvF.
- DCP_{x,y,z}**: DCP are numerical linearization parameters assessed based on the data of power sweep (no uncertainty required). DCP does not depend on frequency nor media.
- ConvF and Boundary Effect Parameters**: Assessed in flat phantom using E-field (or Temperature Transfer Standard for $f \leq 800$ MHz) and inside waveguide using analytical field distributions based on power measurements for $f > 800$ MHz. The same setups are used for assessment of the parameters applied for boundary compensation (alpha, depth) of which typical uncertainty values are given. These parameters are used in DASY4 software to improve probe accuracy close to the boundary. The sensitivity in TSL corresponds to NORM_{x,y,z} * ConvF whereby the uncertainty corresponds to that given for ConvF. A frequency dependent ConvF is used in DASY version 4.4 and higher which allows extending the validity from ± 50 MHz to ± 100 MHz.
- Spherical isotropy (3D deviation from isotropy)**: in a field of low gradients realized using a flat phantom exposed by a patch antenna.
- Sensor Offset**: The sensor offset corresponds to the offset of virtual measurement center from the probe tip (on probe axis). No tolerance required.

Probe ES3DV3

SN:3183

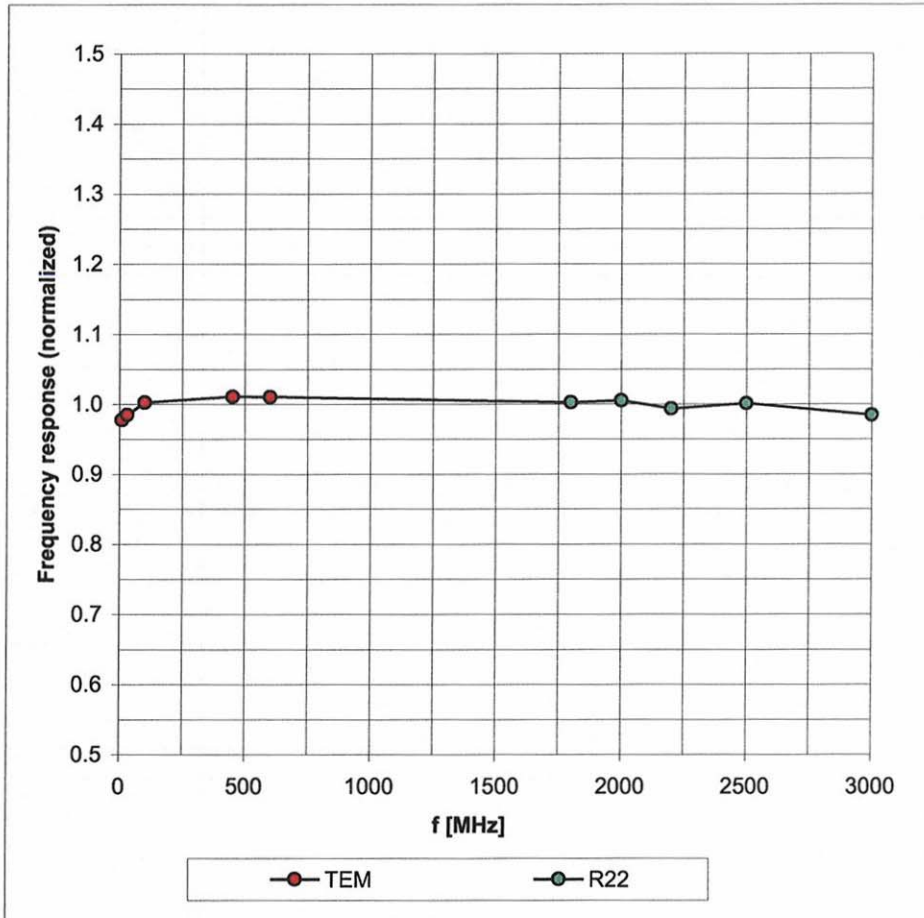
Manufactured:	March 25, 2008
Calibrated:	August 18, 2008

Calibrated for DASY Systems

(Note: non-compatible with DASY2 system!)

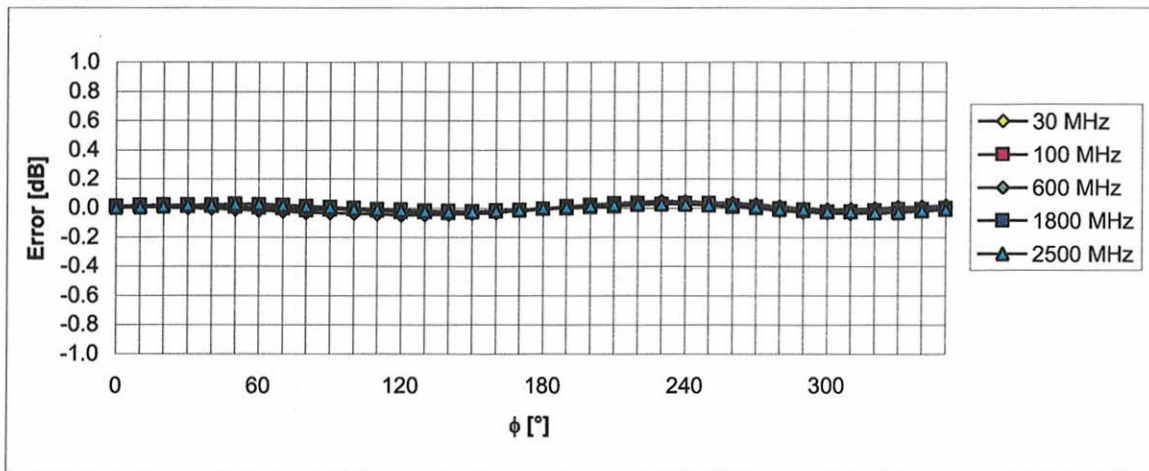
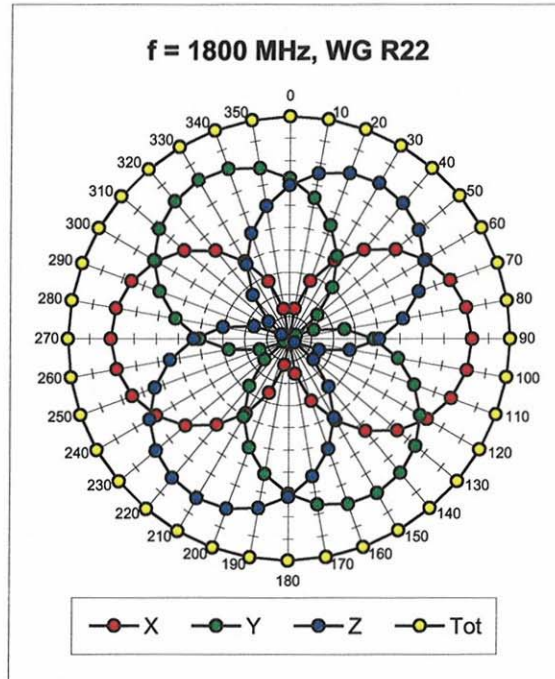
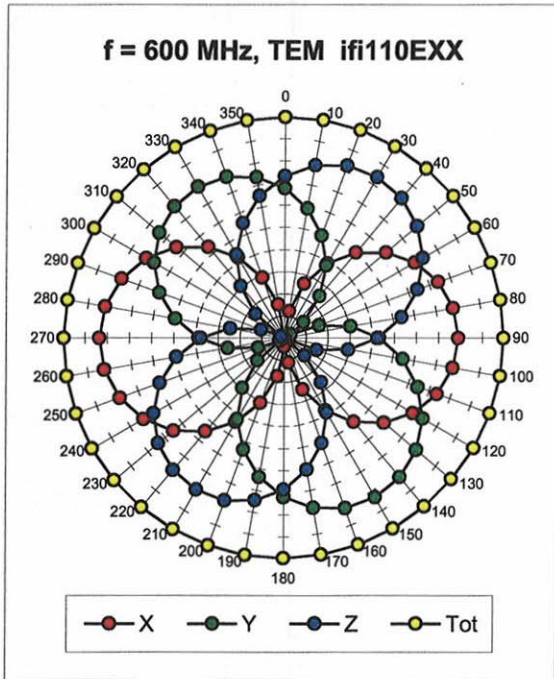
Frequency Response of E-Field

(TEM-Cell:ifi110 EXX, Waveguide: R22)



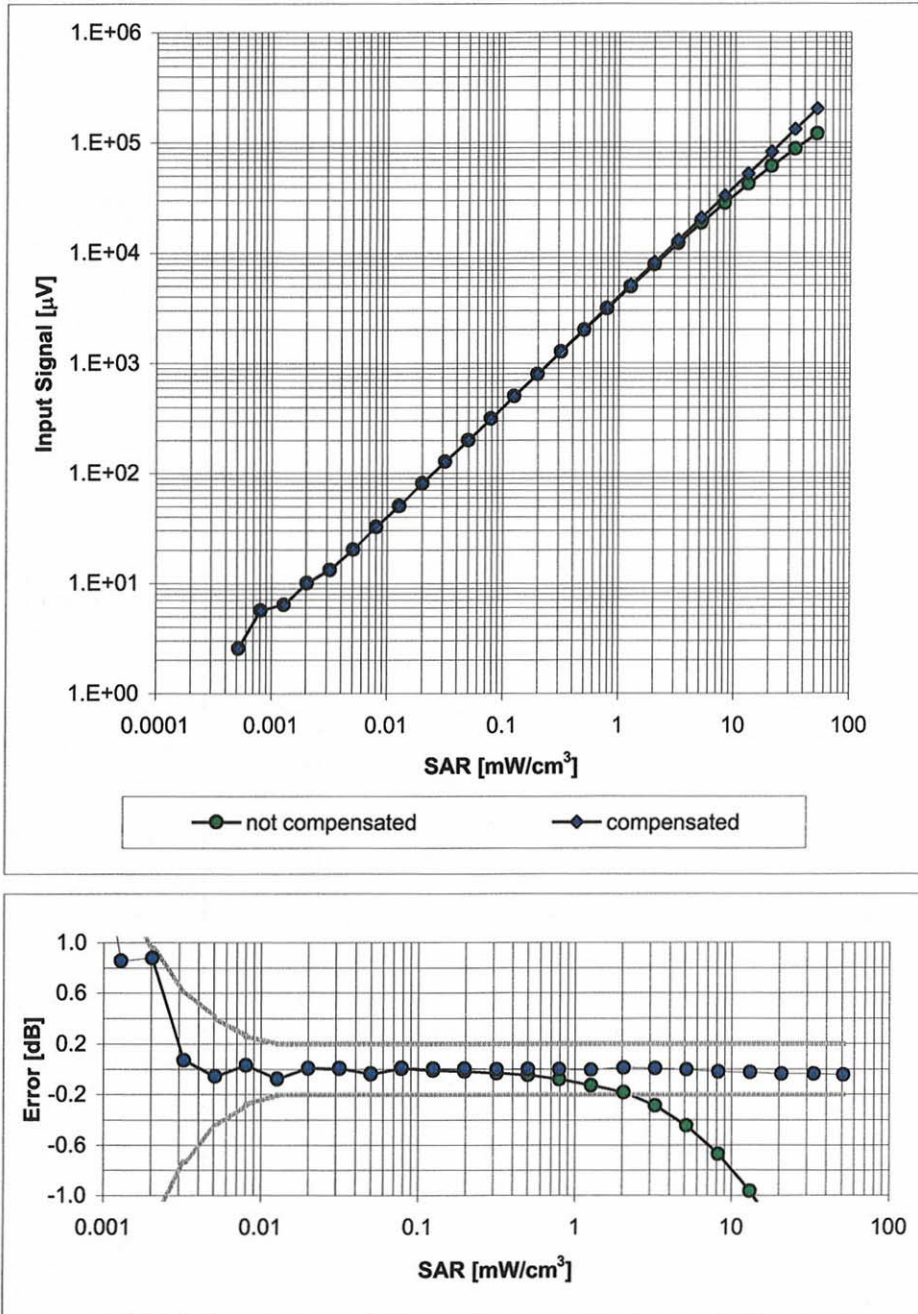
Uncertainty of Frequency Response of E-field: $\pm 6.3\%$ (k=2)

Receiving Pattern (ϕ), $\vartheta = 0^\circ$



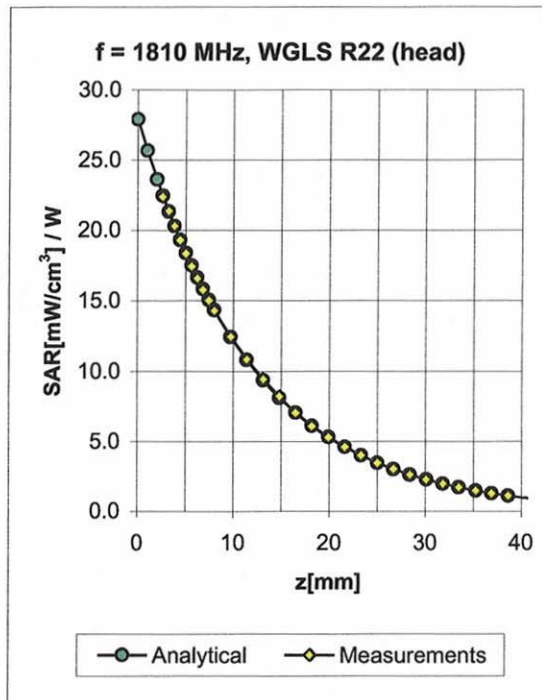
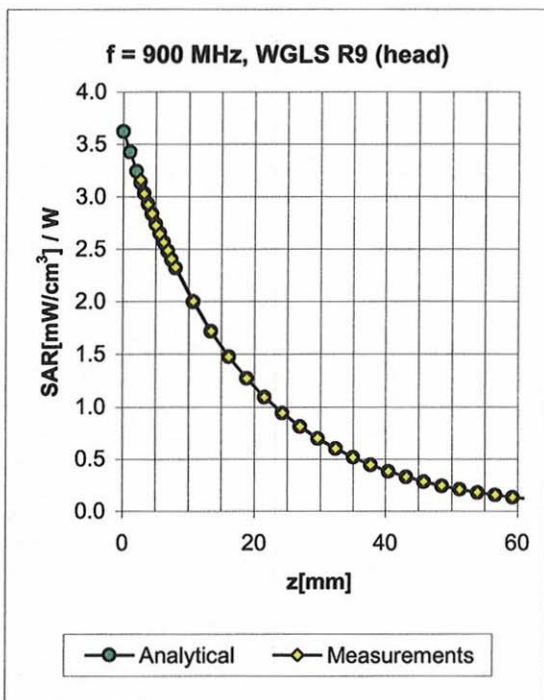
Uncertainty of Axial Isotropy Assessment: $\pm 0.5\%$ ($k=2$)

Dynamic Range $f(\text{SAR}_{\text{head}})$ (Waveguide R22, $f = 1800 \text{ MHz}$)



Uncertainty of Linearity Assessment: $\pm 0.6\%$ ($k=2$)

Conversion Factor Assessment

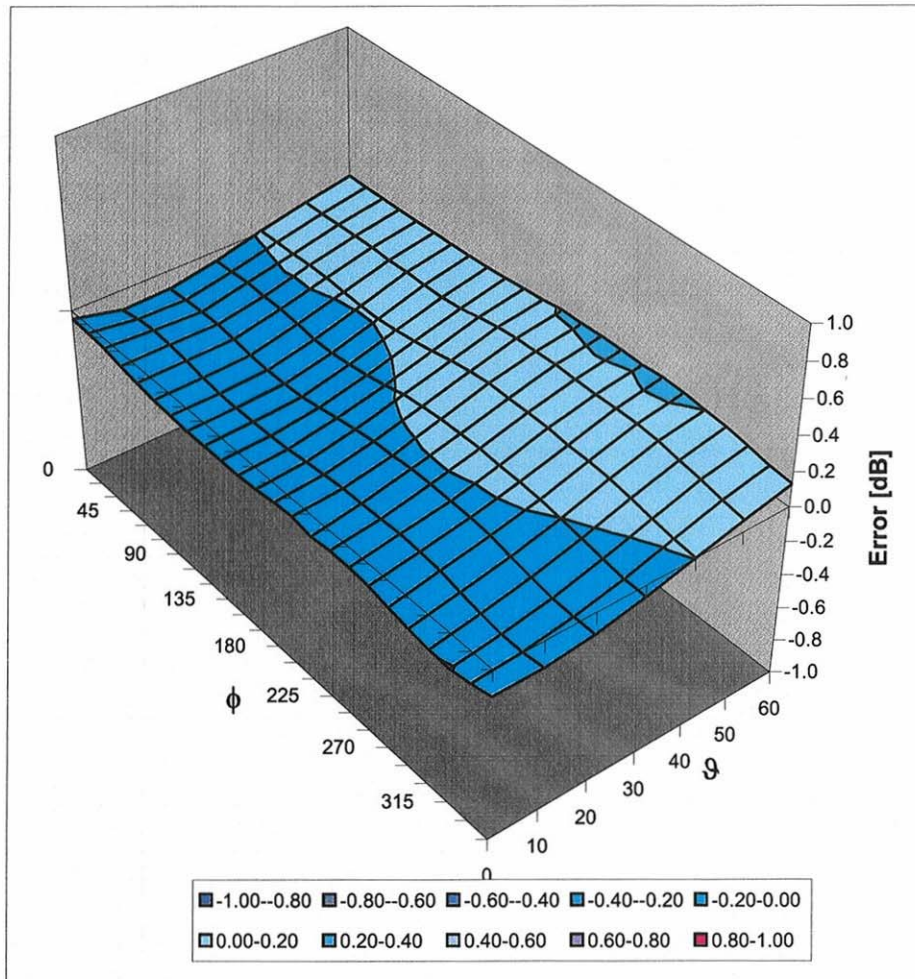


f [MHz]	Validity [MHz] ^c	TSL	Permittivity	Conductivity	Alpha	Depth	ConvF Uncertainty
900	± 50 / ± 100	Head	41.5 ± 5%	0.97 ± 5%	0.34	2.11	5.90 ± 11.0% (k=2)
1810	± 50 / ± 100	Head	40.0 ± 5%	1.40 ± 5%	0.63	1.52	5.20 ± 11.0% (k=2)
1950	± 50 / ± 100	Head	40.0 ± 5%	1.40 ± 5%	0.83	1.33	4.98 ± 11.0% (k=2)
2450	± 50 / ± 100	Head	39.2 ± 5%	1.80 ± 5%	0.60	1.55	4.60 ± 11.0% (k=2)
900	± 50 / ± 100	Body	55.0 ± 5%	1.05 ± 5%	0.39	1.69	5.86 ± 11.0% (k=2)
1810	± 50 / ± 100	Body	53.3 ± 5%	1.52 ± 5%	0.47	1.65	4.87 ± 11.0% (k=2)
1950	± 50 / ± 100	Body	53.3 ± 5%	1.52 ± 5%	0.55	1.57	4.72 ± 11.0% (k=2)
2450	± 50 / ± 100	Body	52.7 ± 5%	1.95 ± 5%	0.60	1.07	4.11 ± 11.0% (k=2)

^c The validity of ± 100 MHz only applies for DASY v4.4 and higher (see Page 2). The uncertainty is the RSS of the ConvF uncertainty at calibration frequency and the uncertainty for the indicated frequency band.

Deviation from Isotropy in HSL

Error (ϕ , ϑ), $f = 900$ MHz



Uncertainty of Spherical Isotropy Assessment: $\pm 2.6\%$ ($k=2$)

Appendix 5
Measurement Uncertainty Budget

Exhibit 11: Class II Permissive Change SAR Test report - 22920-3F

<i>a</i>	<i>b</i>	<i>c</i>	<i>d</i>	<i>e = f(d,k)</i>	<i>f</i>	<i>g</i>	<i>h = c x f /e</i>	<i>i = c x g /e</i>	<i>k</i>
Uncertainty Component	IEEE 1528 section	Tol. (± %)	Prob Dist	Div.	<i>c_i</i> (1 g)	<i>c_i</i> (10 g)	1 g <i>u_i</i> (±%)	10 g <i>u_i</i> (±%)	<i>v_i</i>
Measurement System									
Probe Calibration	E.2.1	5.9	N	1.00	1	1	5.9	5.9	∞
Axial Isotropy	E.2.2	4.7	R	1.73	0.707	0.707	1.9	1.9	∞
Hemispherical Isotropy	E.2.2	9.6	R	1.73	0.707	0.707	3.9	3.9	∞
Boundary Effect	E.2.3	1.0	R	1.73	1	1	0.6	0.6	∞
Linearity	E.2.4	4.7	R	1.73	1	1	2.7	2.7	∞
System Detection Limits	E.2.5	1.0	R	1.73	1	1	0.6	0.6	∞
Readout Electronics	E.2.6	0.3	N	1.00	1	1	0.3	0.3	∞
Response Time	E.2.7	1.1	R	1.73	1	1	0.6	0.6	∞
Integration Time	E.2.8	1.1	R	1.73	1	1	0.6	0.6	∞
RF Ambient Conditions - Noise	E.6.1	3.0	R	1.73	1	1	1.7	1.7	∞
RF Ambient Conditions - Reflections	E.6.1	0.0	R	1.73	1	1	0.0	0.0	∞
Probe Positioner Mech. Tolerance	E.6.2	0.4	R	1.73	1	1	0.2	0.2	∞
Probe Positioning w.r.t Phantom	E.6.3	1.4	R	1.73	1	1	0.8	0.8	∞
Max. SAR Evaluation (ext., int., avg.)	E.5	3.4	R	1.73	1	1	2.0	2.0	∞
Test sample Related									
Test Sample Positioning	E.4.2	3.2	N	1.00	1	1	3.2	3.2	29
Device Holder Uncertainty	E.4.1	4.0	N	1.00	1	1	4.0	4.0	8
SAR drift	6.6.2	5.0	R	1.73	1	1	2.9	2.9	∞
Phantom and Tissue Parameters									
Phantom Uncertainty	E.3.1	4.0	R	1.73	1	1	2.3	2.3	∞
Liquid Conductivity (target)	E.3.2	5.0	R	1.73	0.64	0.43	1.8	1.2	∞
Liquid Conductivity (measurement)	E.3.3	3.3	N	1.00	0.64	0.43	2.1	1.4	∞
Liquid Permittivity (target)	E.3.2	5.0	R	1.73	0.6	0.49	1.7	1.4	∞
Liquid Permittivity (measurement)	E.3.3	1.9	N	1.00	0.6	0.49	1.1	0.9	∞
Combined Standard Uncertainty									
			RSS				11.1	10.8	411
Expanded Uncertainty (95% CONFIDENCE LEVEL)									
			<i>k</i> =2				22.2	21.6	

Appendix 6

Dipole Characterization Certificate

Certification of System Performance Check Targets

Based on WI-0396

-Historical Data-

900MHz	
Reference Target:	10.9 (W/kg)
Measurement Uncertainty (k=1):	9.0%
Measurement Period:	18-April-07 to 14-April-08
# of tests performed:	1,125
Grand Average:	11.29 (W/kg)
% Delta (Average - Reference Target)	3.6%
Is % Delta <= Expanded Measurement Uncertainty (k=2)?	Yes
Accept/Reject Average as new system performance check target?	ACCEPT
Applies to Dipole SN's: 55, 69, 77, 78, 79, 80, 91, 92, 93, 94, 95, 96, 97, 1d034, 1d035	

-New System Performance Check Targets- per WI-0396

(based on analysis of historical data)

Frequency	SAR Target (W/kg)	Permittivity	Conductivity (S/m)
900MHz	11.29	41.5 ± 5%	0.97 ± 5%

-Approvals-

Submitted by: Date:

Signed: 

Comments:

Approved by: Date:

Signed: 

Comments:

Certification of System Performance Check Targets

FCD-1806, rev-1

-Historical Data-

900 MHz	
Reference Target:	10.9 (W/kg)
Measurement Uncertainty (k=1):	9.0%
Measurement Period:	15April08 - 26March09
# of tests performed:	1,099
Grand Average:	11.19 (W/kg)
% Delta (Average - Reference Target)	2.7%
Is % Delta <= Expanded Measurement Uncertainty (k=2)?	Yes
Accept/Reject <u>Average</u> as new system performance check target?	ACCEPT
<u>Applies to Dipole SN's:</u> 55, 69, 77, 78, 79, 80, 91, 92, 93, 94, 95, 96, 97, 1d034, 1d035	

-New System Performance Check Targets- per WI-0396

(based on analysis of historical data)

Frequency	SAR Target (W/kg)	Permittivity Target +/- %	Conductivity (S/m) Target +/- %
900 MHz	11.19	41.5 +/- 5%	0.97 +/- 5%

-Approvals-

Submitted by: Date:

Signed: 

Comments:

Approved by: Date:

Signed: 

Comments:

Certification of System Performance Check Targets

FCD-1806, rev-1

-Historical Data-

1800 MHz	
Reference Target:	38.4 (W/kg)
Measurement Uncertainty (k=1):	9.0%
Measurement Period:	15April08 - 26March09
# of tests performed:	929
Grand Average:	37.91 (W/kg)
% Delta (Average - Reference Target)	-1.3%
Is % Delta <= Expanded Measurement Uncertainty (k=2)?	Yes
Accept/Reject <u>Average</u> as new system performance check target?	ACCEPT
<u>Applies to Dipole SN's:</u> 246tr, 250tr, 251tr, 259tr, 263tr, 271tr, 272tr, 276tr, 277tr, 279tr, 280tr, 281tr, 283tr, 284tr, 2d128, 2d129	

-New System Performance Check Targets- per WI-0396

(based on analysis of historical data)

Frequency	SAR Target (W/kg)	Permittivity Target +/- %	Conductivity (S/m) Target +/- %
1800 MHz	37.91	40.0 +/- 5%	1.40 +/- 5%


-Approvals-

Submitted by: Date:

Signed: 

Comments:

Approved by: Date:

Signed: 

Comments:

Certification of System Performance Check Targets

FCD-1806, rev-1

-Historical Data-

2450 MHz	
Reference Target:	52.4 (W/kg)
Measurement Uncertainty (k=1):	9.0%
Measurement Period:	15April08 - 26March09
# of tests performed:	150
Grand Average:	56.68 (W/kg)
% Delta (Average - Reference Target)	8.2%
Is % Delta <= Expanded Measurement Uncertainty (k=2)?	Yes
Accept/Reject <u>Average</u> as new system performance check target?	ACCEPT
Applies to Dipole SN's:	
740, 766, 767, 788, 789	

-New System Performance Check Targets- per WI-0396

(based on analysis of historical data)

Frequency	SAR Target (W/kg)	Permittivity Target +/- %	Conductivity (S/m) Target +/- %
2450 MHz	56.68	39.2 +/- 10%	1.80 +/- 5%

-Approvals-

Submitted by: Date:

Signed: 

Comments:

Approved by: Date:

Signed: 

Comments:

END OF REPORT