



## HAC Test Report for Telecoil IHDP56JX2

**Date of test:** Sep-06-2008 to Sep-18-2008  
**Date of Report:** Sep-19-2008

**Laboratory:** Motorola Mobile Devices Business Product Safety & Compliance Laboratory  
600 N. US Highway 45  
Room: MW113  
Libertyville, Illinois 60048

**Test Responsible:** Thomas Knipple  
Senior RF Engineer

**Statement of Compliance:** Motorola declares under its sole responsibility that portable cellular telephone FCC IHDP56JX2 to which this declaration relates, complies with recommendations and guidelines FCC 47 CFR §20.19. The measurements were performed to ensure compliance to the ANSI C63.19-2007. It also declares that the product was tested in accordance with the appropriate measurement standards, guidelines and recommended practices. Any deviations from these standards, guidelines and recommended practices are noted below:

(none)

**Results Summary:** T Category = T3

©Motorola, Inc. 2008

This test report shall not be reproduced except in full, without written approval of the laboratory.

The results and statements contained herein relate only to the items tested. The names of individuals involved may be mentioned only in connection with the statements or results from this report.

Motorola encourages all feedback, both positive and negative, on this test report.

## Table of Contents

<b>1. INTRODUCTION .....</b>	<b>3</b>
<b>2. DESCRIPTION OF THE DEVICE UNDER TEST.....</b>	<b>3</b>
<b>3. TEST EQUIPMENT USED.....</b>	<b>4</b>
<b>4. SIGNAL VERIFICATION.....</b>	<b>7</b>
<b>5. TEST RESULTS.....</b>	<b>8</b>
<b>5.1 Telecoil SNR Results .....</b>	<b>8</b>
<b>5.2 Telecoil Environment Results.....</b>	<b>14</b>
<b>6. MEASUREMENTS FOR CERTIFICATION OF 3G DEVICES.....</b>	<b>17</b>
<b>APPENDIX 1: CONTOUR PLOTS.....</b>	<b>18</b>
<b>APPENDIX 2: AMBIENT NOISE SPECTRUM PLOTS .....</b>	<b>23</b>
<b>APPENDIX 3: DETAILS ON THE MEASUREMENT SYSTEMS.....</b>	<b>26</b>
<b>APPENDIX 4: PICTURES OF TEST SETUP .....</b>	<b>33</b>
<b>APPENDIX 5: MOTOROLA UNCERTAINTY BUDGET .....</b>	<b>34</b>
<b>APPENDIX 6: AUDIO MAGNETIC PROBE CERTIFICATE .....</b>	<b>36</b>
<b>APPENDIX 7: AMCC CERTIFICATE (HELMHOLZ COIL).....</b>	<b>37</b>
<b>APPENDIX 8: HAC DISTRIBUTION PLOTS FOR E-FIELD AND H-FIELD .....</b>	<b>38</b>

## 1. Introduction

The Motorola Mobile Devices Business Product Safety Laboratory has performed Hearing Aid Compatibility (HAC) measurements for the portable cellular phone (FCC ID IHDP56JX2). The portable cellular phone was tested in accordance with ANSI PC63.19-2007 standard. The test results presented herein clearly demonstrate compliance FCC 47 CFR § 20.19. This report demonstrates compliance for Telecoil performance only and not for near field emissions.

## 2. Description of the Device Under Test

**Table 1: Information for the Device Under Test**

<b>Serial number</b>	<b>80684D51, 80747706</b>						
<b>Mode(s) of Operation</b>	800 CDMA	1700 CDMA	1900 CDMA	800 EV-DO Rel. O	1700 EV-DO Rel. O	1900 EV-DO Rel. O	Bluetooth
<b>Modulation Mode(s)</b>	QPSK	QPSK	QPSK	QPSK	QPSK	QPSK	GMSK
<b>Maximum Output Power Setting</b>	25.00 dBm	25.00 dBm	25.00 dBm	25.00 dBm	25.00 dBm	25.00 dBm	8.00 dBm
<b>Duty Cycle</b>	1:1	1:1	1:1	1:1	1:1	1:1	1:1
<b>Transmitting Frequency Range(s)</b>	824.70 – 848.31 MHz	1711.2 - 1753.75 MHz	1851.25 – 1908.75 MHz	824.70 – 848.31 MHz	1711.2 - 1753.75 MHz	1851.25 – 1908.75 MHz	2400.0 - 2483.5 MHz
<b>Production Unit or Identical Prototype (47 CFR §2.908)</b>	Identical Prototype						
<b>Device Category</b>	Portable						
<b>RF Exposure Limits</b>	General Population / Uncontrolled						

Note: No Bluetooth profile exists in this phone that will allow a Bluetooth link while in a cellular call that passes audio to the earpiece. If the user had Bluetooth enabled and a link established, they could not be listening to the phone through the earpiece.

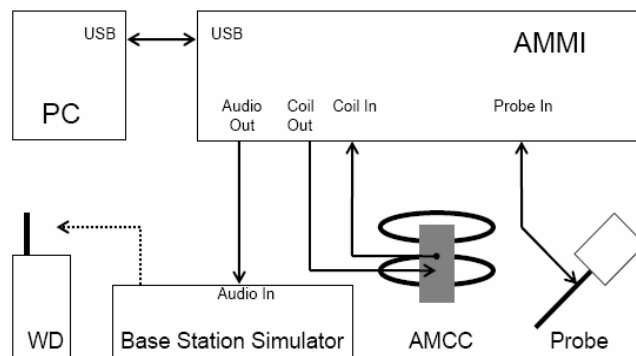
### 3. Test Equipment Used

The Motorola Mobile Devices Business Product Safety & Compliance Laboratory utilizes a Dosimetric Assessment System (Dasy4™ v4.7) manufactured by Schmid & Partner Engineering AG (SPEAG™) of Zurich, Switzerland. All Telecoil measurements are taken within a shielded enclosure. The measurement uncertainty budget is given in Appendix 5. The list of calibrated equipment used for the measurements is shown in Table 2.

**Table 2: Test Equipment**

	Description	Serial Number	Cal Due Date
<b>Dosimetric System Equipment</b>	DAE3	702	May-28-2009
	DAE3	703	Nov-21-2008
	Audio Magnetic 1D Field Probe AM1DV2	1003	
	AMMI SE UMS 010 AA	1005	
	AMCC SD HAC P02 AB	1005	
	Test Arch SD HAC D01 BA	1073	
<b>Additional Test Equipment</b>	Rohde & Schwarz CMU 200	110518	Sep-16-2009

**Figure 1: Telecoil setup and cabling (pictures from DASY manual)**



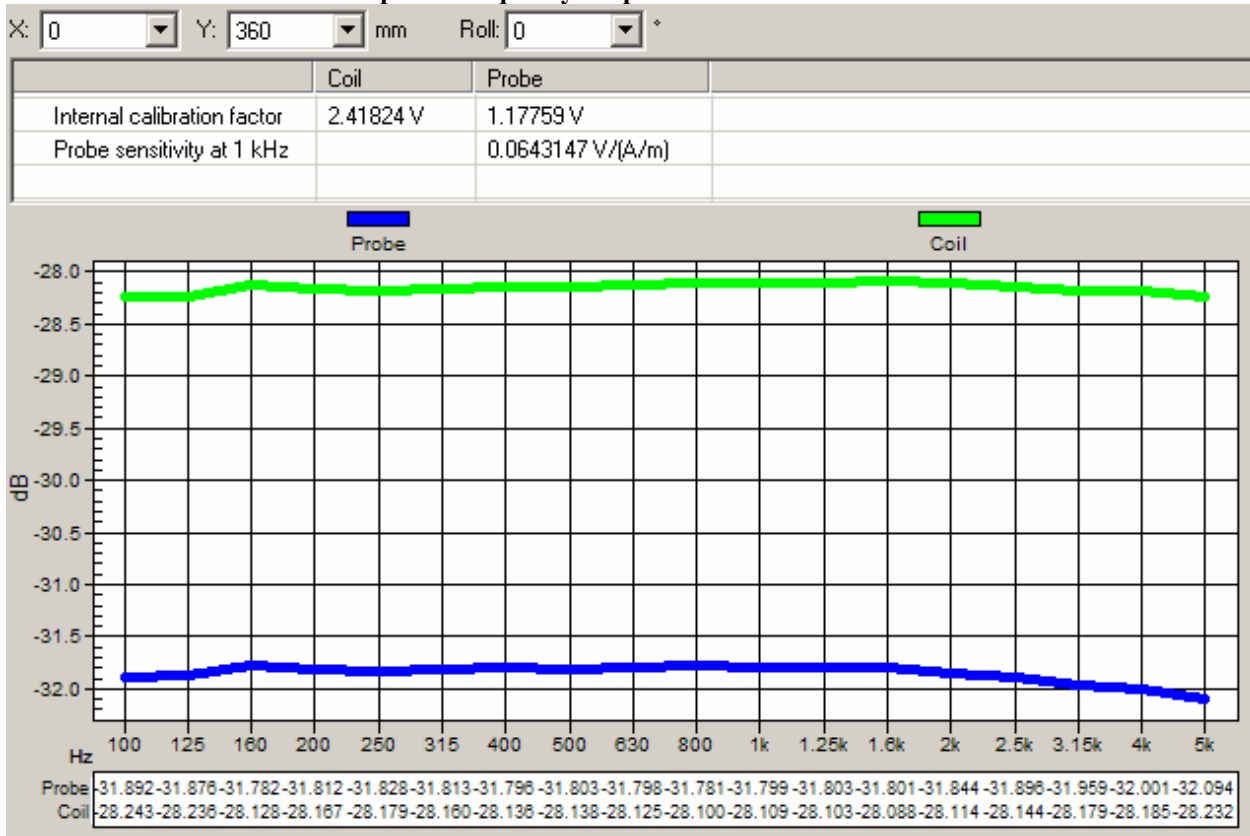
AMMI (Audio Magnetic Measurement Instrument) is a desktop unit containing a sampling unit, a waveform generator for test, calibration signals and a USB interface. Front connectors include: Audio Out - predefined or user definable audio signals for injection into the WD; Probe In - the probe signal is evaluated by AMMI; Coil Out - test and calibration signal to the AMCC; Coil In - monitor signal from the AMCC.

Audio Magnetic Probe (AM1DV2) is an active probe with a single sensor. The same probe coil is used to measure three orthogonal field components (axial, radial 1, radial 2). The probe is rotated to properly orient the coil for each field component. The probe's frequency response, linearity, and other characteristics are given in the certificate in Appendix 6.

AMCC (Audio Magnetic Calibration Coil) is a Helmholtz coil for calibration of the AM1D probe. The two horizontal coils create a homogeneous magnetic field in the z direction. Refer to Appendix 7 for more details on AMCC coil.

The probe is calibrated in the AMCC coil. The frequency response and sensitivity are measured and stored. Sensitivity includes both probe sensitivity and pre-amplifier sensitivity.

**Graph 1: Frequency Response measured in AMCC**

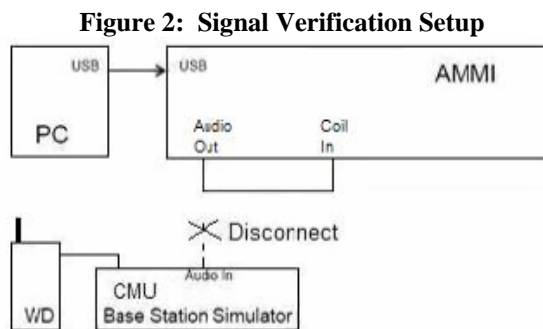


Sensitivity measured in AMCC:  $0.0643147 \text{ V}/_{(A/m)}$

The sensitivity is for a 1 kHz sine signal. The sensitivity includes both probe sensitivity and pre-amplifier sensitivity. It is the total calibration, and there are no additional probe calibration factors. The voltage into the Helmholtz coil is across the shunt resistor.

#### 4. Signal Verification

An Input Level is measured to verify that it is within +/-0.2 dB from the Reference Input Level in section 6.3.2.1 of ANSI PC63.19-2007.



In Figure 2 setup, “Audio Out” of the AMMI is connected to the “Coil In” of the AMMI. The “Audio Out” of the AMMI is measured using 1V as the reference.

Section 6.3.2.1 of ANSI PC63.19-2007 specifies the reference input level to be -16 for GSM and -18 for CDMA. Each CMU has a slightly different “0dBm0 Input Reference” value that must be measured. When the CMU box is replaced or externally re-calibrated, an internal calibration procedure must be completed in each transmission mode. On the CMU 200 (SN 110518), the 0dBm0 Input Reference value is 0.73 V for CDMA. For more information on “0dBm0 Input Reference” measurements, refer to Appendix 3-5.

The Target Level for “Audio Out” of the AMMI is shown in Table 3. This target level takes into account the difference between the AMMI’s and CMU’s reference levels.

**Table 3: Measured Input Level**

Modulation	Reference Input Level from ANSI PC63.19 (dBm0)	CMU’s 0dBm0 Input Reference Value (dB)	Target Level for “Audio Out” of AMMI (dBm0)
CDMA	-18	-2.73	-20.73

The signal level for “Audio Out” of the AMMI is measured. Signal Verification has been conducted on the same days as DUT measurements. If it is not within +/-0.2 dB, the gain settings in the DASY template are adjusted. The obtained results are displayed in Table 4.

**Table 4: Measured Input Level**

Modulation	Measured date	Signal	Measured Level for “Audio Out” of AMMI (dBm0)	Target Level for “Audio Out” of AMMI (dBm0)
CDMA	Sep-06-2008	Narrowband	-20.75	-20.73
		Broadband	-20.73	
	Sep-07-2008	Narrowband	-20.75	
		Broadband	-20.73	
	Sep-18-2008	Narrowband	-20.75	
		Broadband	-20.73	

## 5. Test Results

### 5.1 Telecoil SNR Results

The phone was tested in normal configurations for the ear use. The DASY4 v4.7 measurement system specified in section 3.1 was utilized within the intended operations as set by the SPEAG™ setup. The Test Arch provided by SPEAG is used to position the DUT. All tests are done via conducted setup with the CMU 200. The volume on the phone is adjusted to maximum. Any backlight is off during testing, and HAC compliance will be explained in the manual.

The tests are performed with a software telecoil function enabled.

To enable the telecoil function, select “Main Menu » Settings » 4. Call » 7. Hearing Aid » ON.”

The Cellular Phone model covered by this report has the following battery options:

Battery #1 – SNN5833A – 930 mAH Battery

The distance is established by positioning the device beneath the test arch phantom so that it is touching the frame. The location and thickness of the arch, and the location/orientation of the coil within the probe housing, are precisely known values in the DASY software. The height of the measurement plane is further fine-tuned by performing a Surface Detection job at the beginning of each test. The end result is that the probe sensor is very precisely located 10 mm above the device reference plane.

ABM2 investigation has been carried out to determine the highest channel / frequency of each applicable frequency band for each slider position (extended and retracted). At the location of the Telecoil source, ABM2 is measured in the axial probe position for each frequency (Table 5). For each band, the channel with the highest ABM2 measurement is highlighted in **bold**.

**Table 5: ABM2 measurements across the frequency band for the portable cellular telephone at highest possible output power.**

ABM2 Measurements (dB A/m)			
		Slider Extended	Slider Retracted
CDMA 800	Ch. 1013	-50.9682	-28.1635
	Ch. 384	<b>-48.9110</b>	<b>-25.2529</b>
	Ch. 777	-49.6527	-26.5229
CDMA 1700	Ch. 25	-36.7732	<b>-25.7343</b>
	Ch. 450	-38.0201	-25.9445
	Ch. 875	<b>-36.5555</b>	-26.7749
CDMA 1900	Ch. 25	-48.2497	-26.9222
	Ch. 600	<b>-47.1146</b>	-28.4689
	Ch. 1175	-47.5900	<b>-26.3804</b>

For the channels highlighted in bold in Table 5, Telecoil SNR measurements are shown in Table 6. The sequence of the Telecoil SNR measurement is listed in steps below.

- a) Geometry & signal check
- b) Background noise measurement. The background noise is measured at the center of the listening area.
- c) Coarse resolution axial scan (narrowband signal, 1 sec measurement times, 50 x 50 mm grid with 5.55 mm spacing). Only ABM1 is measured in order to find the location of the Telecoil source.
- d) Fine resolution axial, radial-transverse, and radial-longitudinal scans, positioned appropriately based on optimal ABM1 of coarse resolution axial scan (narrowband signal, 1 sec measurement times, variable grid size with 2 mm spacing). Both ABM1 and ABM2 are measured in order to find the location of the SNR point.
- e) ABM1 & ABM2 point measurements in axial, radial-transverse, and radial-longitudinal coil orientations, positioned appropriately based on optimal signal quality of fine resolution scans (narrowband signal, 2 sec measurement times). SNR is calculated for each coil orientation.
- f) Frequency Response point measurement in axial coil orientation, positioned appropriately based on optimal signal quality of fine resolution axial scan (broadband signal, 12 sec measurement time)

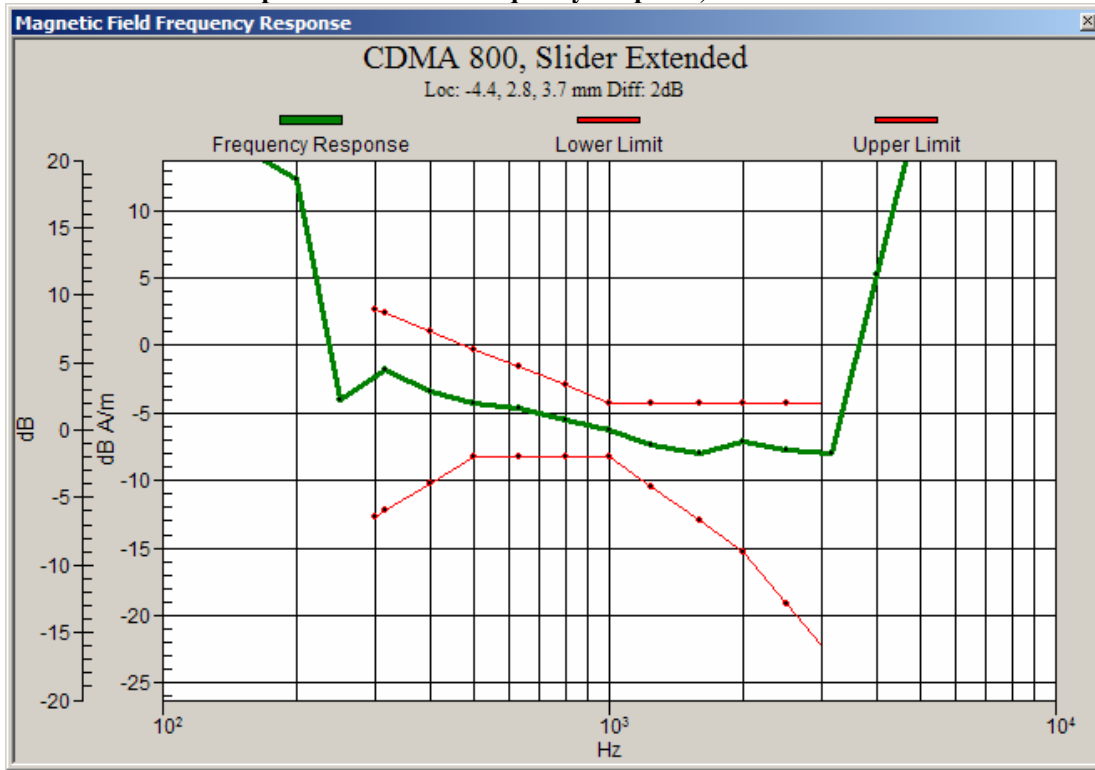
The ABM1, SNR and Telecoil Rating results are shown in Table 6. Also shown are the measured conducted output power, location of the measured point, noise and ABM2. The delta between Ambient Noise measurement and ABM2 measurement should be greater than 10 dB. However, in cases where ABM2 is very low, it is suitable for the delta to be less than 10 dB. For the three probe positions, contour plots for the lowest SNR, indicated in **bold numbers**, are given in Appendix 1. For the three probe positions, noise spectrum plots for the highest ambient noise, indicated with **bold numbers**, are given in Appendix 2. These noise spectrum plots are half band integrated with an A-weight filter applied.

Telecoil SNR Limits		
ABM 1	Greater or equal to -18 dB A/m	
SNR	T3	Greater than 20 dB
	T4	Greater than 30 dB

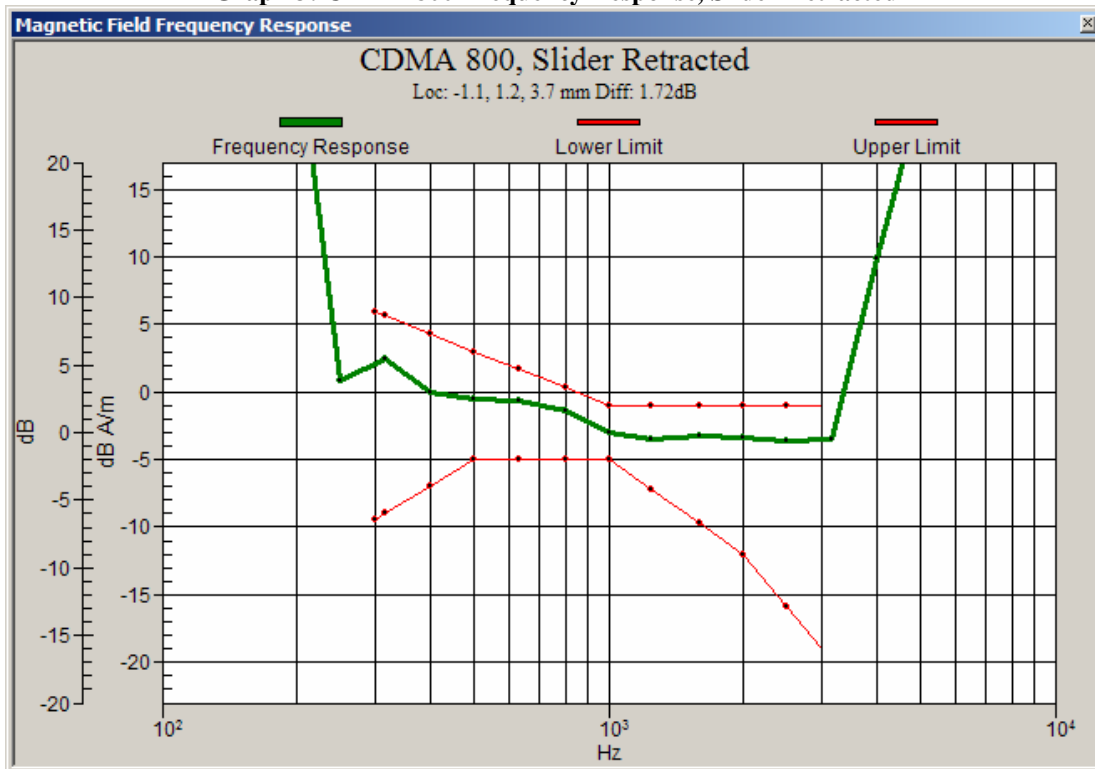
**Table 6: Telecoil SNR measurement results for the portable cellular telephone at highest possible output power**

Probe Position	Frequency Band (MHz)	Phone Slider Position	Channel	Measured Point Location (x mm, y mm)	Ambient Noise (dB A/m)	ABM2 (dB A/m)	ABM2 – Ambient Noise (dB)	ABM1 (dB A/m)	SNR (dB)	Telecoil SNR Rating
Axial	CDMA 800	Extended	384	-4.4, 2.8	-56.1202	-39.6998	16.4204	-6.2585	33.44	T4
		Retracted	384	-1.1, 1.2	<b>-54.1153</b>	-25.6240	28.4913	-2.9994	22.62	T3
	CDMA 1700	Extended	875	-4.4, 4.4	-55.3452	-44.3430	11.0022	-7.4664	36.88	T4
		Retracted	25	2.0, -2.8	-56.2361	-24.8506	31.3855	-4.5348	<b>20.32</b>	T3
	CDMA 1900	Extended	600	-4.3, 0.4	-57.0263	-37.6850	19.3413	-5.6765	32.01	T4
		Retracted	1175	-1.1, 1.2	-54.4962	-25.3958	29.1004	-3.4516	21.94	T3
Radial 1	CDMA 800	Extended	384	6.8, -0.5	-57.5488	-41.1091	16.4397	-11.1233	29.99	T3
		Retracted	384	-5.1, -0.9	-56.0733	-42.1934	13.8799	-15.6644	<b>26.53</b>	T3
	CDMA 1700	Extended	875	6.4, 1.2	-56.4336	-42.7777	13.6559	-11.4871	31.29	T4
		Retracted	25	-5.6, 2.0	-57.5230	-41.7205	15.8025	-13.5995	28.12	T3
	CDMA 1900	Extended	600	6.5, 2.0	-57.2856	-39.6128	17.6728	-11.9497	27.66	T3
		Retracted	1175	-6.8, 4.0	<b>-55.6454</b>	-41.7278	13.9176	-14.8724	26.86	T3
Radial 2	CDMA 800	Extended	384	-3.2, -6.4	-57.7456	-46.8799	10.8657	-13.2803	33.60	T4
		Retracted	384	-5.2, -10.8	-57.4078	-46.2323	11.1755	-14.0116	32.22	T4
	CDMA 1700	Extended	875	0.4, -6.8	-57.7811	-47.1197	10.6614	-12.3514	34.77	T4
		Retracted	25	-3.6, -10.0	-58.0182	-44.9056	13.1126	-13.2258	31.68	T4
	CDMA 1900	Extended	600	-3.5, 12.0	<b>-56.9673</b>	-44.8707	12.0966	-14.0529	<b>30.82</b>	T4
		Retracted	1175	-6.8, -12.1	-57.9967	-48.3568	9.6399	-15.9564	32.40	T4

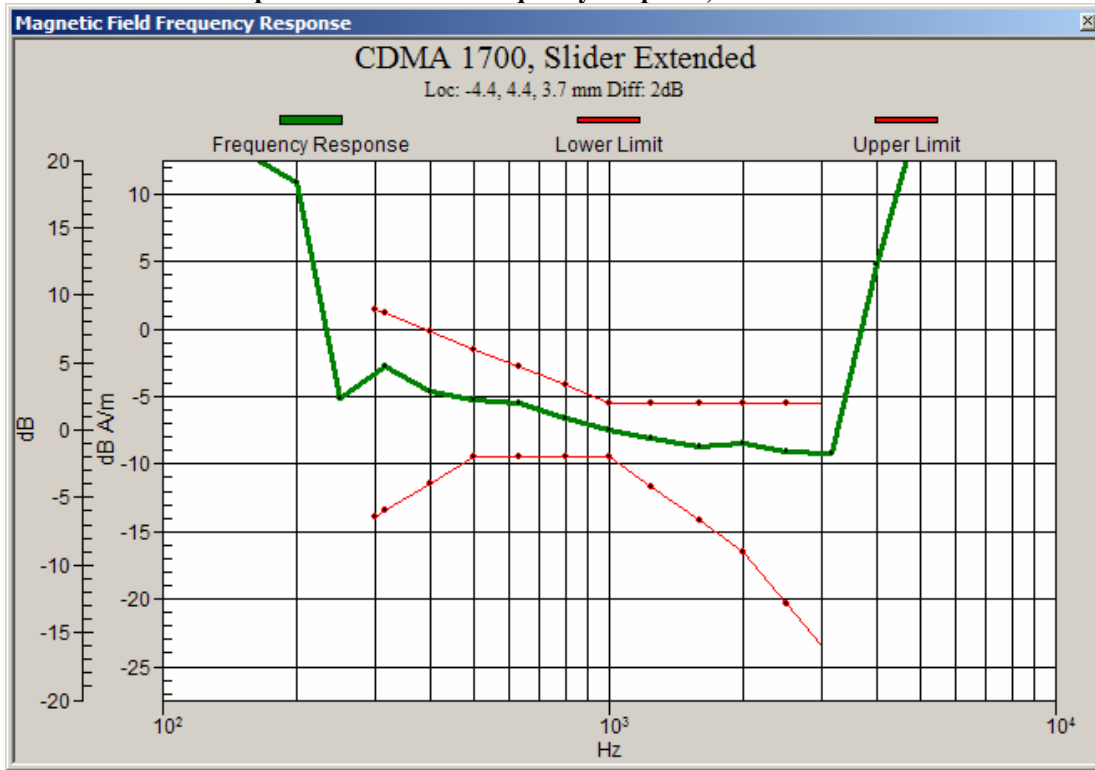
Graph 2: CDMA 800 Frequency Response, Slider Extended



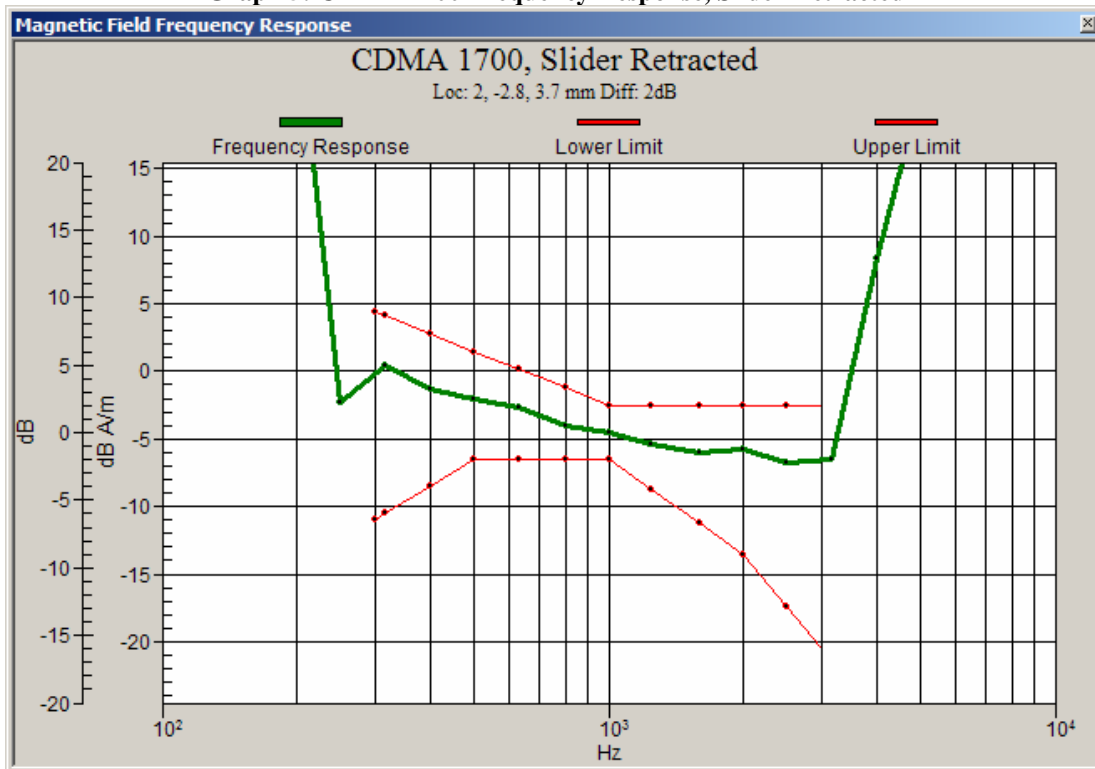
Graph 3: CDMA 800 Frequency Response, Slider Retracted



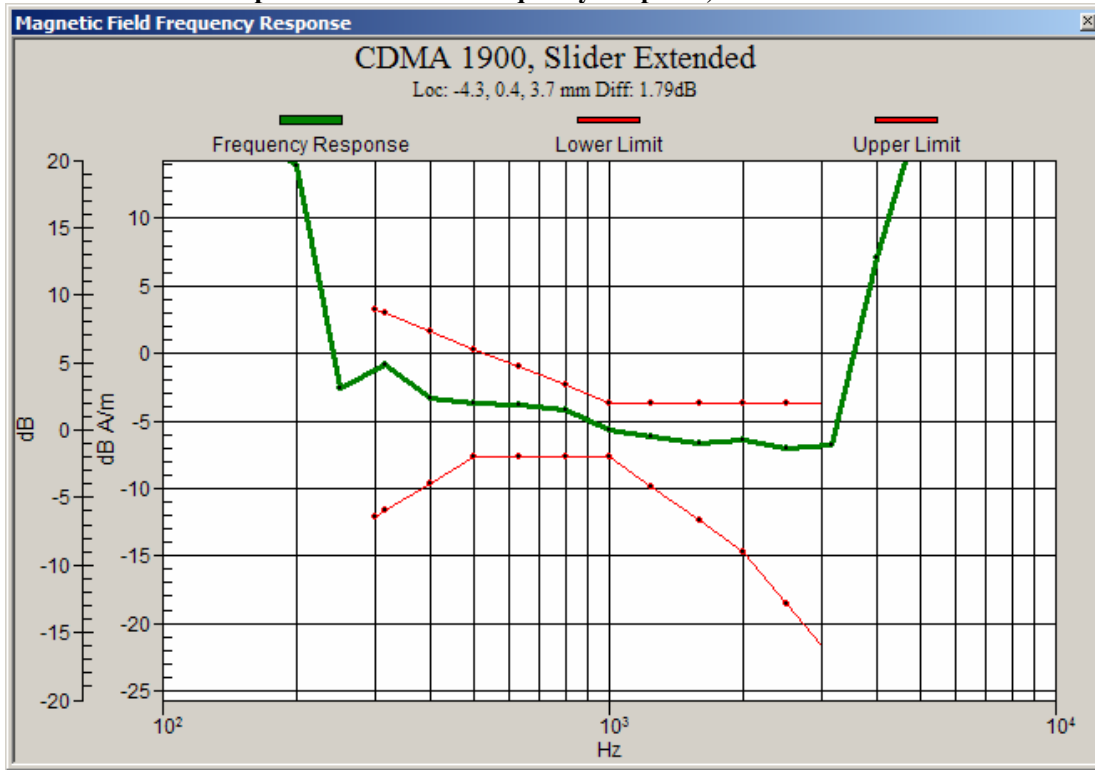
Graph 4: CDMA 1700 Frequency Response, Slider Extended



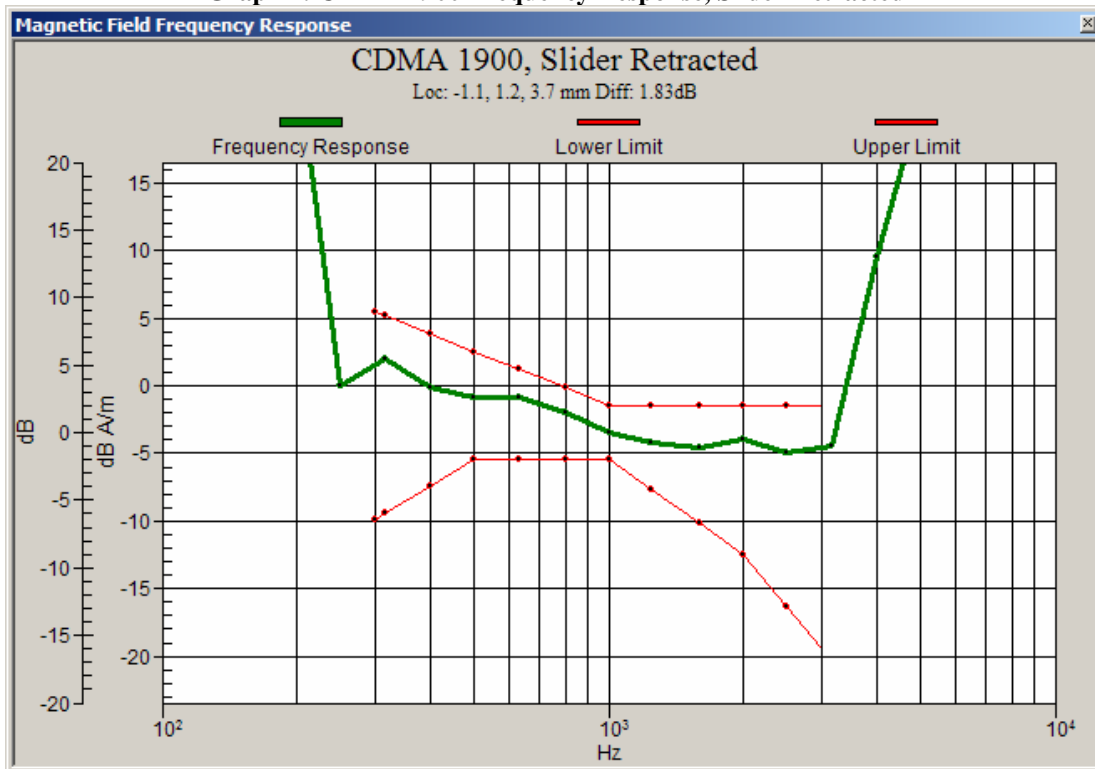
Graph 5: CDMA 1700 Frequency Response, Slider Retracted



**Graph 6: CDMA 1900 Frequency Response, Slider Extended**



**Graph 7: CDMA 1900 Frequency Response, Slider Retracted**



## 5.2 Telecoil Environment Results

Telecoil Environment is determined by analysis of both E-Field scan and H-Field scans in the area of the Telecoil location. The Telecoil location is the earpiece speaker area. The 5 cm x 5 cm measurement grid is centered on the acoustic output of the device. The probe is raised 15 mm from the highest point of the phone's contour to the center point of the probe element. The phone was tested in normal configurations for the ear use. These configurations are tested at the high, middle and low frequency channels of each applicable frequency band. For more information on the near field measurements on the unit 80F4D4CA, refer to "HAC Test Report for Near Field Emissions IHDP56JX2" from Sep 8, 2008.

The worst-case test conditions are indicated with **bold numbers** in the tables and are detailed in Appendix 8: HAC distribution plots for E-Field and H-Field.

**Table 7: Telecoil Environment measurement results for the portable cellular telephone at highest possible output power.**

**Table 7a: HAC E-Field measurement results for the portable cellular telephone at highest possible output power (Full Rate).**

Frequency Band (MHz)	Slider position	Channel Setting	Measured PMF	Drift (dB)	Excluded Cells	Peak Field (V/m)	Rating
CDMA 800 MHz	Extended	1013	1.03	-0.179	6,9	104.1	M4
		384		<b>0.027</b>	<b>6,9</b>	<b>110.4</b>	<b>M4</b>
		777		0.063	6,9	102.7	M4
	Retracted	1013		0.078	2,3	70.1	M4
		384		<b>-0.075</b>	<b>2,3</b>	<b>91.4</b>	<b>M4</b>
		777		0.284	3,6	79.6	M4
CDMA 1700 MHz	Extended	25	1.06	-0.182	1,2,3	41.0	M4
		450		-0.173	2,3,6	41.8	M4
		875		<b>-0.025</b>	<b>2,3,6</b>	<b>43.3</b>	<b>M4</b>
	Retracted	25		<b>-0.086</b>	<b>8,9</b>	<b>50.7</b>	<b>M4</b>
		450		-0.044	2,3	40.4	M4
		875		-0.061	2,3	29.6	M4
CDMA 1900 MHz	Extended	25	1.07	-0.021	8,9	25.3	M4
		600		-0.060	8,9	25.2	M4
		1175		<b>0.121</b>	<b>7,8</b>	<b>32.4</b>	<b>M4</b>
	Retracted	25		0.044	8,9	35.0	M4
		600		0.072	8,9	38.2	M4
		1175		<b>-0.023</b>	<b>8,9</b>	<b>46.3</b>	<b>M4</b>

**Table 7b: HAC E-Field measurement results for the portable cellular telephone at highest possible output power (1/8 Rate).**

Frequency Band (MHz)	Slider position	Channel Setting	Measured PMF	Drift (dB)	Excluded Cells	Peak Field (V/m)	Rating
CDMA 800 MHz	Extended	1013	2.78	0.005	6,9	98.8	M4
		384		<b>0.012</b>	<b>3,6</b>	<b>104.8</b>	<b>M4</b>
		777		0.128	3,6	101.7	M4
	Retracted	1013		0.108	2,3	66.8	M4
		384		<b>-0.039</b>	<b>2,3</b>	<b>84.5</b>	<b>M4</b>
		777		0.047	6,9	73.6	M4
CDMA 1700 MHz	Extended	25	2.95	0.105	1,2,3	38.9	M4
		450		-0.121	2,3,6	40.4	M4
		875		<b>-0.103</b>	<b>2,3,6</b>	<b>42.2</b>	<b>M4</b>
	Retracted	25		<b>0.099</b>	<b>8,9</b>	<b>47.3</b>	<b>M4</b>
		450		0.110	2,3	39.5	M4
		875		-0.073	2,3	29.6	M4
CDMA 1900 MHz	Extended	25	2.89	-0.161	8,9	24.0	M4
		600		-0.044	7,8	24.5	M4
		1175		<b>0.011</b>	<b>7,8</b>	<b>29.8</b>	<b>M4</b>
	Retracted	25		-0.118	8,9	35.3	M4
		600		0.061	8,9	38.7	M4
		1175		<b>-0.004</b>	<b>8,9</b>	<b>44.5</b>	<b>M4</b>

**Table 7c: HAC H-Field measurement results for the portable cellular telephone at highest possible output power (Full Rate).**

Frequency Band (MHz)	Slider position	Channel Setting	Measured PMF	Drift (dB)	Excluded Cells	Peak Field (A/m)	Rating
CDMA 800 MHz	Extended	1013	1.03	-0.190	1,4,7	0.129	M4
		384		<b>0.073</b>	<b>1,4,7</b>	<b>0.141</b>	<b>M4</b>
		777		-0.110	1,4,7	0.139	M4
	Retracted	1013		0.069	1,4,7	0.091	M4
		384		<b>0.092</b>	<b>1,4,7</b>	<b>0.119</b>	<b>M4</b>
		777		-0.195	1,4,7	0.105	M4
CDMA 1700 MHz	Extended	25	1.01	-0.079	1,2,4	0.104	M4
		450		-0.065	1,2,4	0.104	M4
		875		<b>-0.036</b>	<b>1,2,4</b>	<b>0.104</b>	<b>M4</b>
	Retracted	25		<b>-0.010</b>	<b>2,3,6</b>	<b>0.136</b>	<b>M4</b>
		450		-0.104	6,8,9	0.115	M4
		875		-0.097	6,8,9	0.088	M4
CDMA 1900 MHz	Extended	25	1.01	0.320	1,2,3	0.047	M4
		600		0.370	1,2,3	0.057	M4
		1175		<b>0.046</b>	<b>2,3,6</b>	<b>0.066</b>	<b>M4</b>
	Retracted	25		0.134	2,3,6	0.126	M4
		600		-0.045	2,3,6	0.129	M4
		1175		<b>-0.047</b>	<b>2,3,6</b>	<b>0.165</b>	<b>M4</b>

**Table 7d: HAC H-Field measurement results for the portable cellular telephone at highest possible output power (1/8 Rate).**

Frequency Band (MHz)	Slider position	Channel Setting	Measured PMF	Drift (dB)	Excluded Cells	Peak Field (A/m)	Rating
CDMA 800 MHz	Extended	1013	2.54	-0.220	1,4,7	0.114	M4
		384		0.030	1,4,7	0.121	M4
		777		<b>-0.083</b>	<b>1,4,7</b>	<b>0.123</b>	<b>M4</b>
	Retracted	1013		0.023	1,4,7	0.085	M4
		384		<b>-0.218</b>	<b>1,4,7</b>	<b>0.106</b>	<b>M4</b>
		777		0.018	1,4,7	0.095	M4
CDMA 1700 MHz	Extended	25	2.55	0.150	1,2,4	0.088	M4
		450		0.002	1,2,4	0.089	M4
		875		<b>0.159</b>	<b>1,2,4</b>	<b>0.089</b>	<b>M4</b>
	Retracted	25		<b>0.083</b>	<b>2,3,6</b>	<b>0.116</b>	<b>M4</b>
		450		0.107	6,8,9	0.103	M4
		875		0.045	6,8,9	0.080	M4
CDMA 1900 MHz	Extended	25	2.54	0.320	1,2,3	0.038	M4
		600		-0.106	1,2,3	0.046	M4
		1175		<b>0.110</b>	<b>2,3,6</b>	<b>0.051</b>	<b>M4</b>
	Retracted	25		0.009	2,3,6	0.119	M4
		600		0.038	2,3,6	0.117	M4
		1175		<b>-0.188</b>	<b>2,3,6</b>	<b>0.148</b>	<b>M4</b>

**6. Measurements for Certification of 3G Devices**

For CDMA devices, RC1 and RC3 CDMA modes are considered in S055 service option. In addition, RC1 and RC3 modes are considered in S02 service option. The conducted power measurements for each mode are shown in the table below.

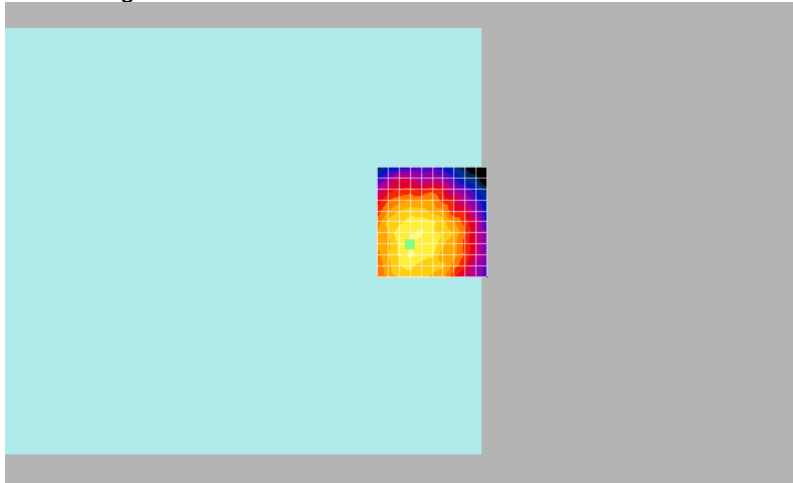
Conducted power (dBm) for CDMA modes						
	Channel	RC1		RC3		RC3 (FCH + SCH)
		S02	S055	S02	S055	
CDMA 800	1013	24.95	24.91	24.93	24.88	Per Motorola designs, the maximum power, when in a mode that allows supplemental channels, will always be less than the RC3/RC1 maximum conducted power limit.
	384	24.91	24.91	24.91	24.85	
	777	24.80	24.83	24.87	24.84	
CDMA 1700	25	24.92	24.97	25.01	24.95	
	450	24.86	24.80	24.74	24.88	
	875	24.78	24.77	24.71	24.92	
CDMA 1900	25	25.04	25.03	24.96	24.93	
	600	24.84	24.83	24.89	24.88	
	1175	24.90	24.92	24.93	24.93	

For CDMA devices, RC1 S03 mode is used for Telecoil compliance evaluation. This RC1 S03 is used for measurements in Table 5 and Table 6. As per the recent presentation by Qualcomm to the FCC on March 15, 2007, RC1 S03 combination represents the appropriate configuration for Telecoil testing. Please refer to the ATIS filing which includes Qualcomm’s presentation. This filing can be found at:

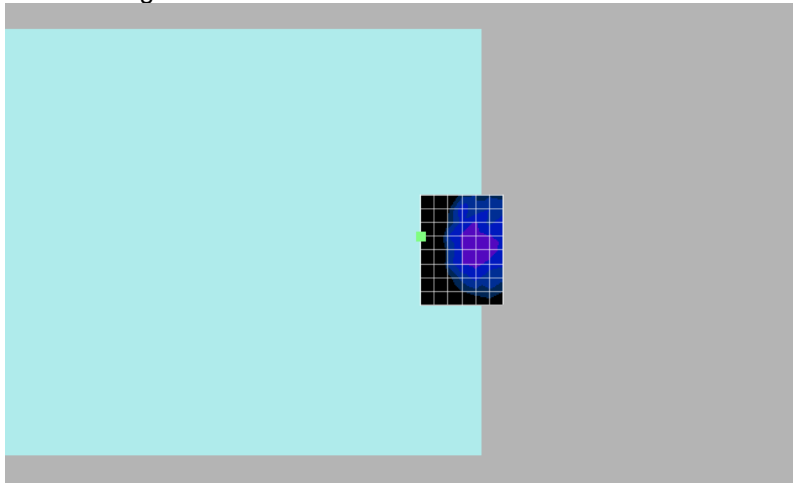
<http://www.atis.org/legal/Docs/MISC/ATIS%2006-203%20Ex%20Parte%20Letter%203-16-07%20w-attach.pdf>

**Appendix 1**  
**Contour Plots**

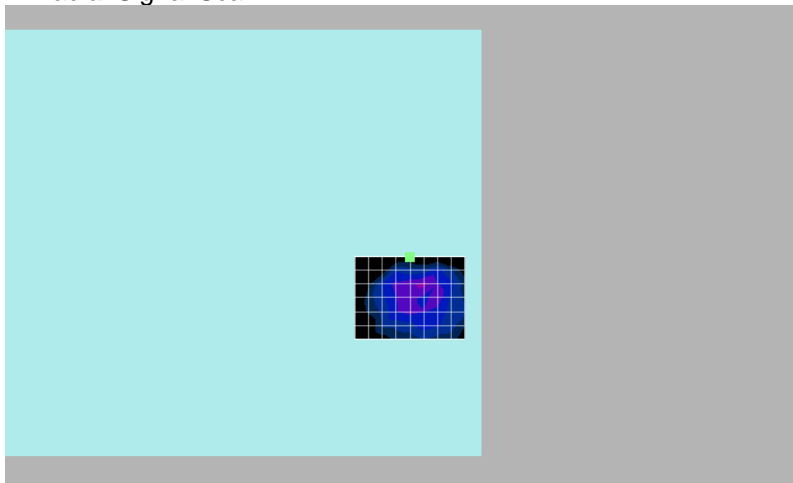
Z-Axial Signal Scan



X-Radial Signal Scan

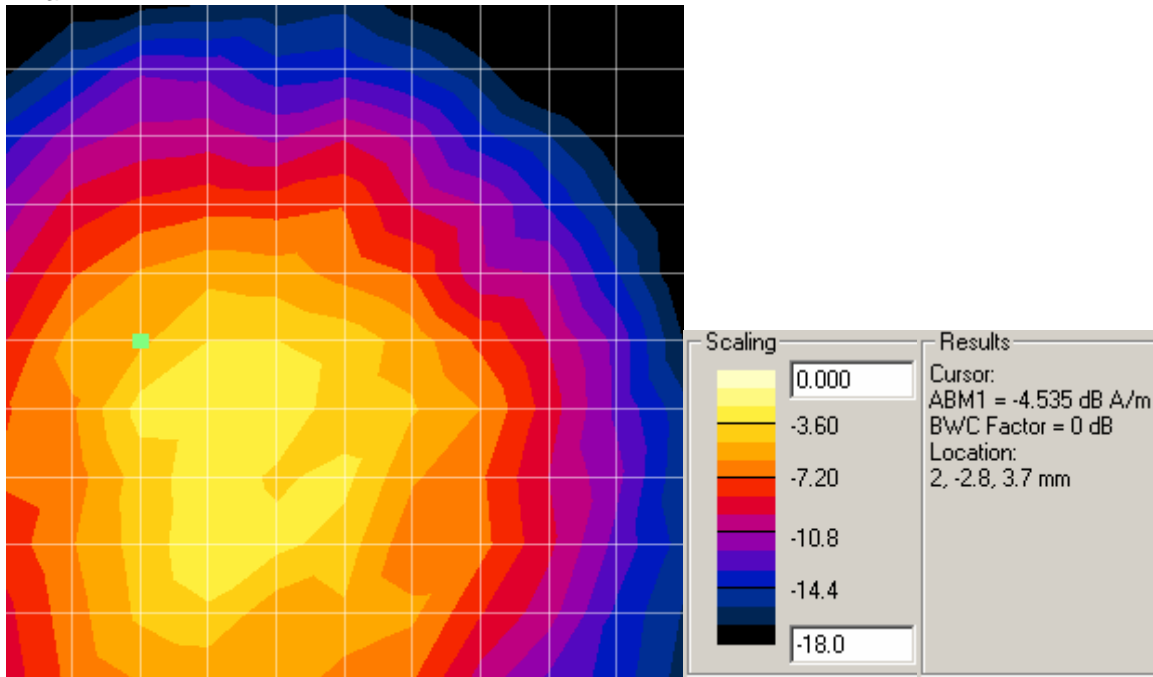


Y-Radial Signal Scan

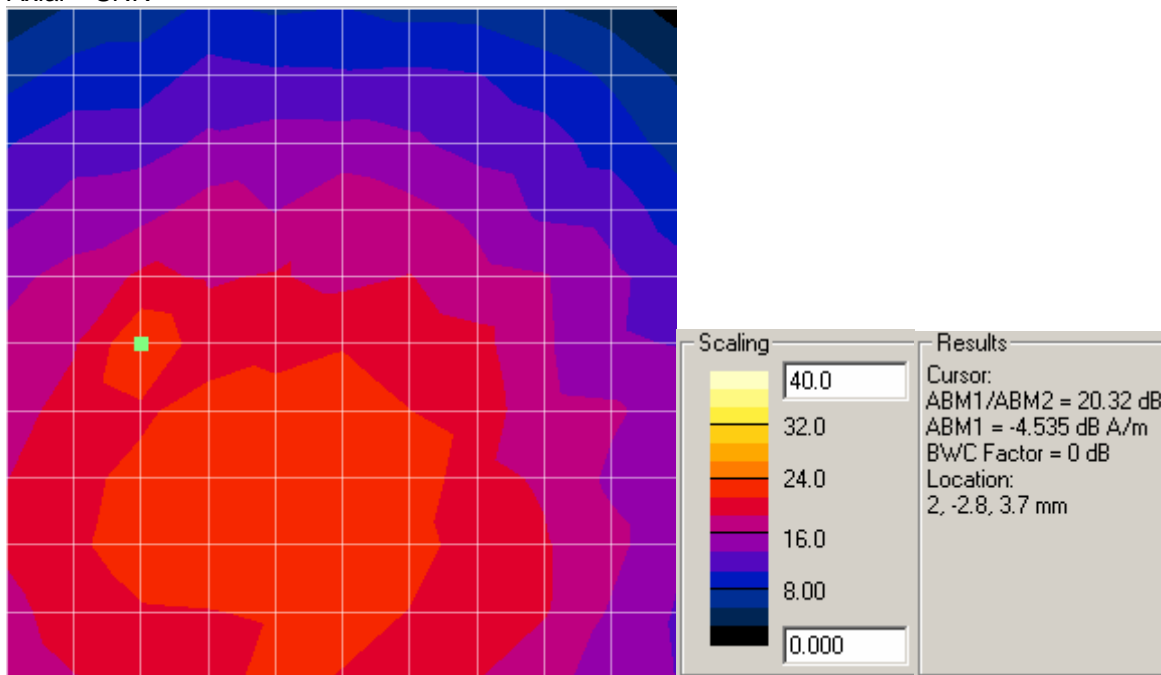


Note: The green square designates the device reference point.

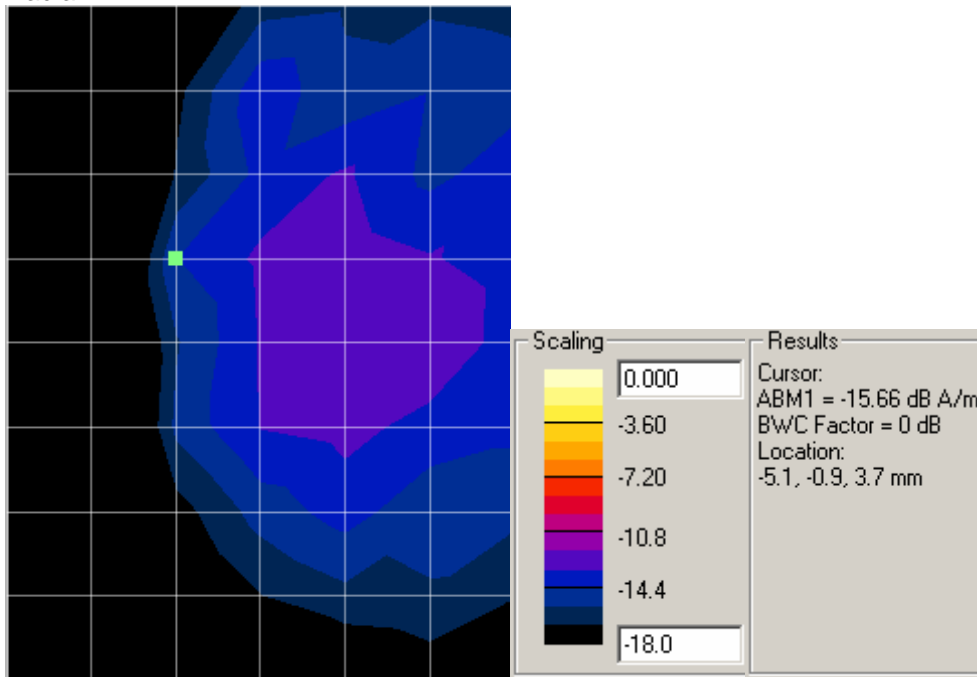
Axial – ABM1



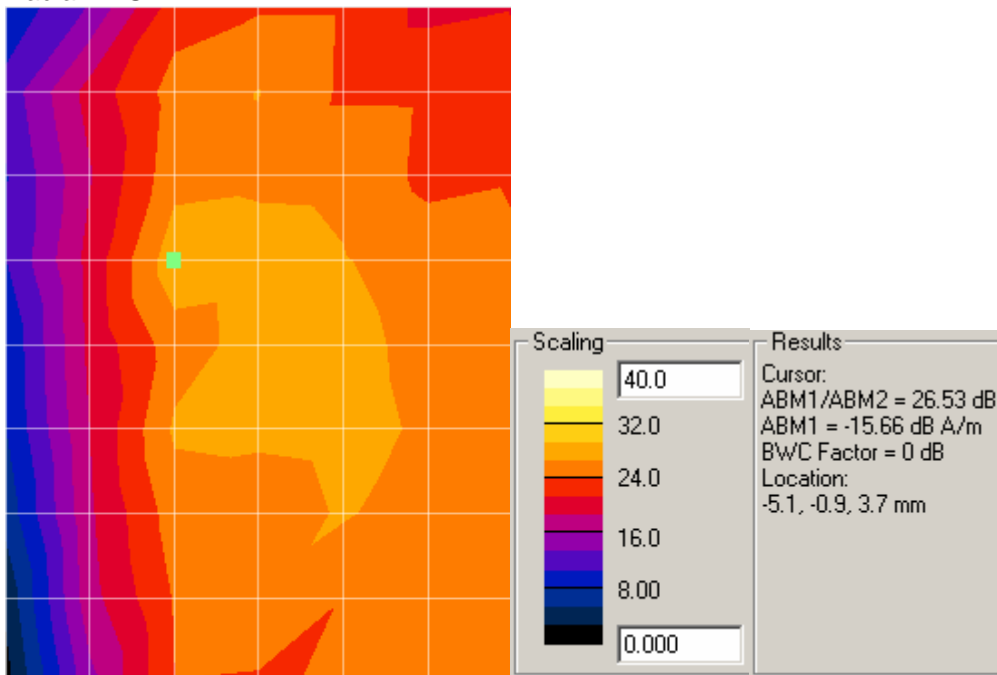
Axial – SNR



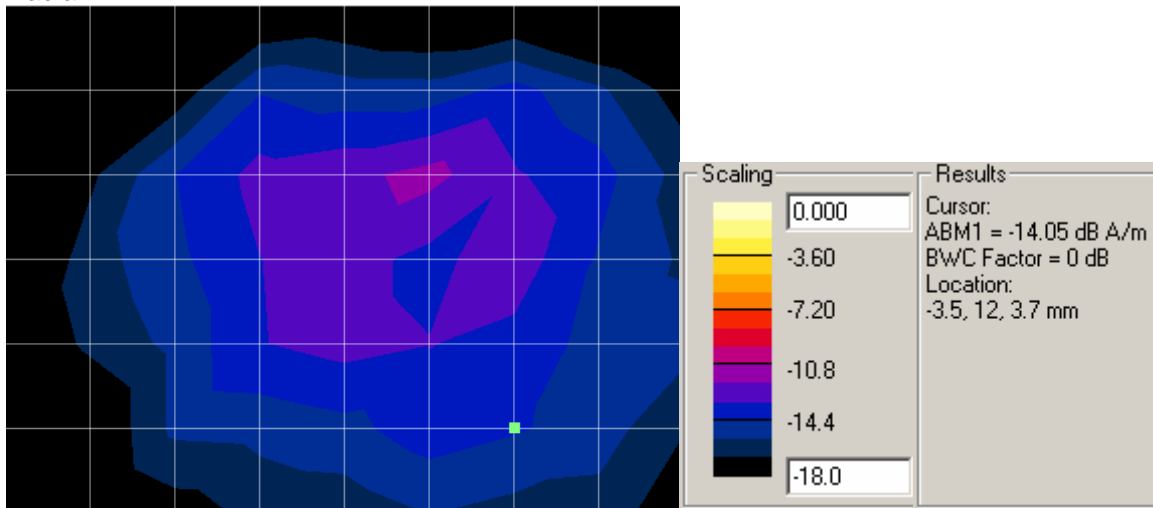
Radial1 – ABM1



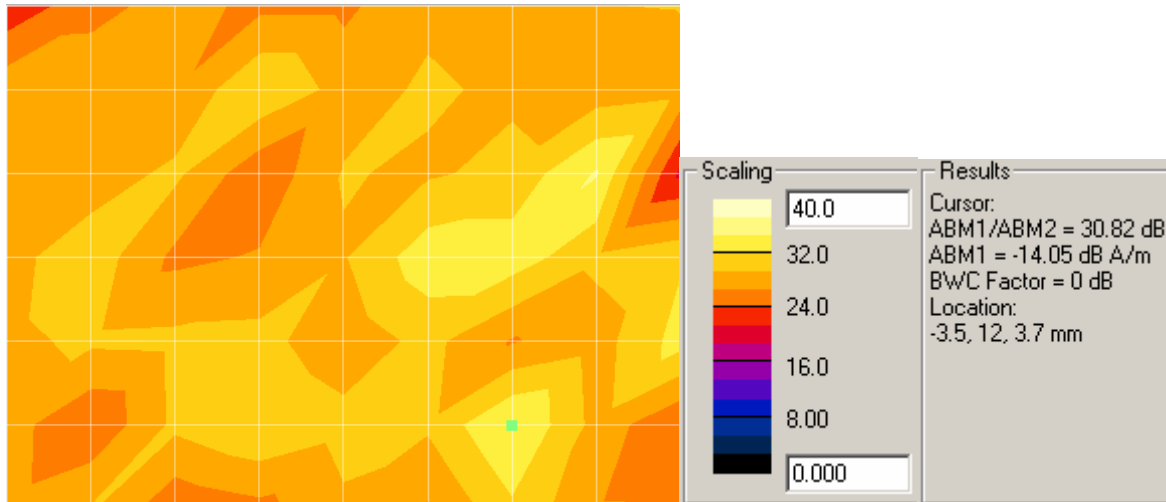
Radial1 – SNR



Radial2 – ABM1

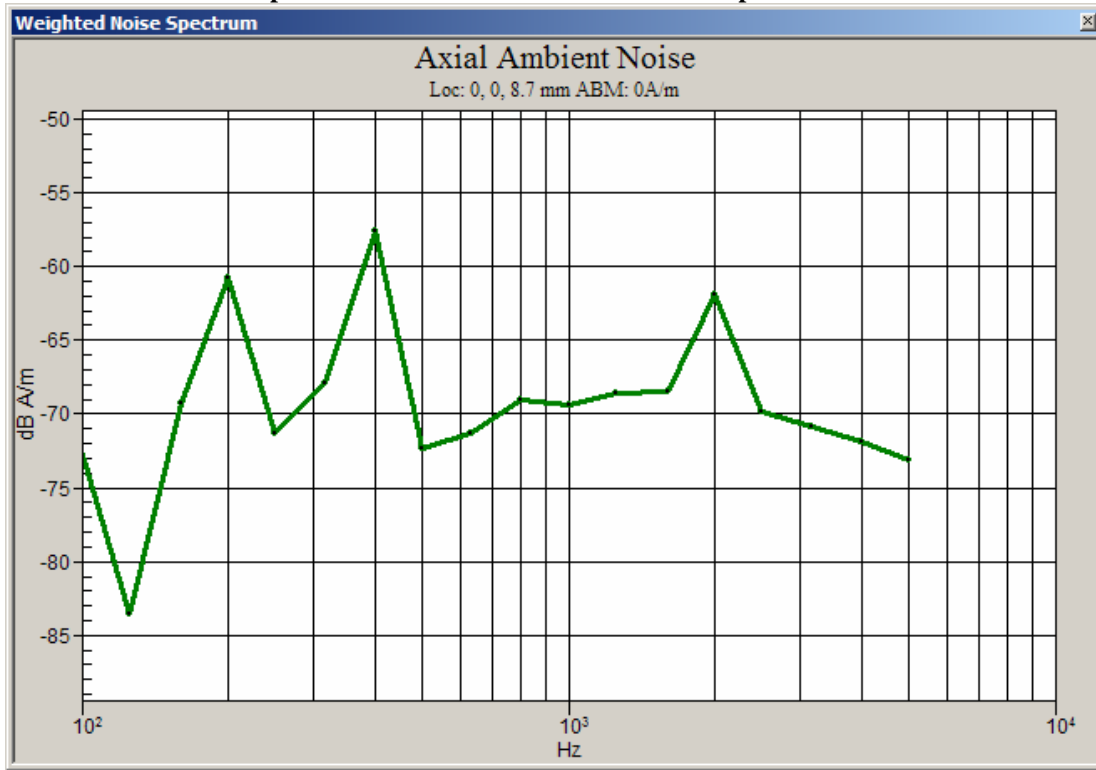


Radial2 – SNR

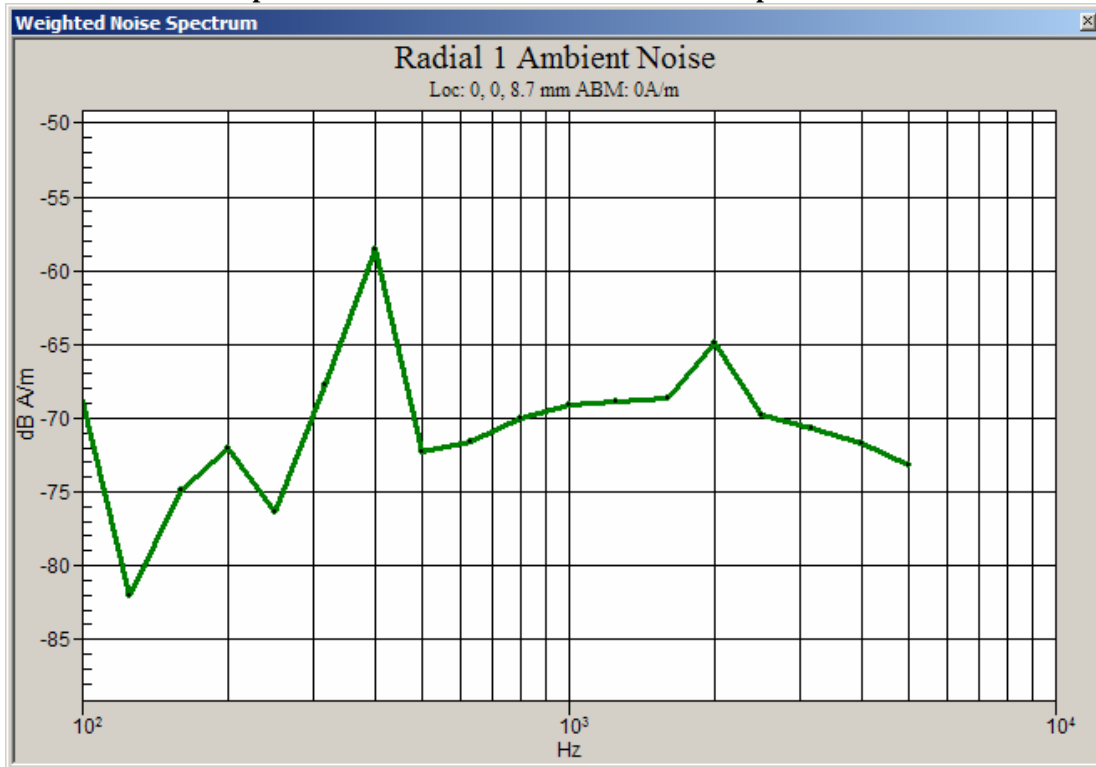


**Appendix 2**  
**Ambient Noise Spectrum Plots**

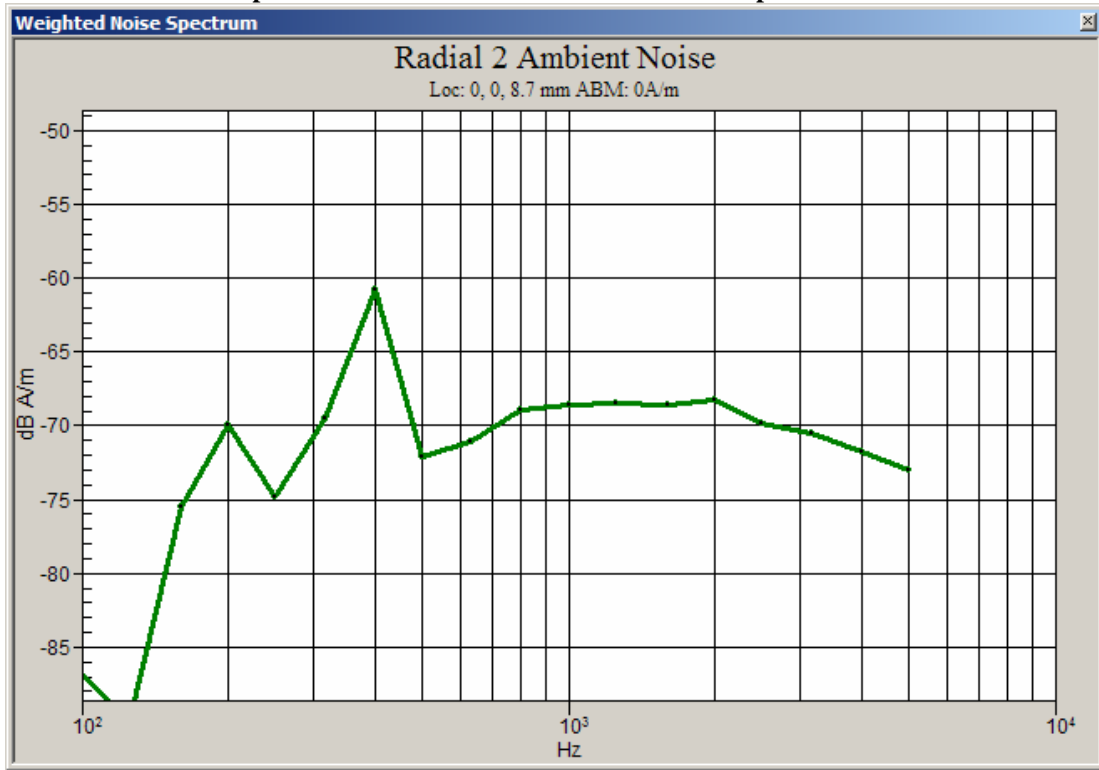
Graph A2-1. Axial Position Ambient Noise Spectrum Plot



Graph A2-2. Radial 1 Position Ambient Noise Spectrum Plot



Graph A2-3. Radial 2 Position Ambient Noise Spectrum Plot



**Appendix 3**  
**Details on the Measurement Systems**

**3-1) Details on ABM2 measurements by the system**

**(Description provided by Schmid & Partner Engineering, AG):**

The processing applies a convolution in the time-domain. This filtering is composed of integrator (straight-forward), Half-Band filter (first-order filter) and A-weighting. The convolved data stream is then integrated over the desired period and represented and stored numerically in DASY4 as the ABM Noise (= ABM2).

During the validation process of our system, the functionality of this process has been verified by debugging the filters step-by-step progressive and comparing the results also with a Rohde & Schwarz UPL Analyzer. The intermediate steps are not accessible in the final software code operated by the end user. In addition, the following verification has been made, using a single frequency (sine) signal: At the reference frequency of 1 kHz, the signal is equivalent to ABM1. ABM1 is visible from the calibration job, inclusive its frequency slope from 100Hz to 5kHz. This function (conversion of the coil voltage to the field) is the same integration function.

The verification of the probe linearity and the linearity of the integrator has been determined and documented in the certificate 880-SP AM1 001 A, inclusive the integrator, over the required frequency range (exceeding 5 kHz). The additional frequency slope of the Half-Band filter and the A-weighting have also been tested by changing the applied frequency over the full range. The attenuation was verified for each third-octave-band and up to > 10 kHz. In addition, the correct processing of multiple sine-wave signals was verified.

The convolutions work over the full frequency range available in the analog path, only limited by AC-coupling at the low end and anti-aliasing filter at the high frequency end. White noise signal without band limitation has not been used for filter measurements. Pink noise, decreasing with frequency, resulting in a frequency independent response of the third-octave filter bank was used to optically verify the correct filtering function. Precision measurements were however made with pure sine signals.

Frequency components beyond the visible range of 5 kHz are contained in the ABM2 figure.

**(Measurements made by Motorola):**

Comparison of 1kHz narrowband signal driven externally into TMFS coil

ABM1 @ 1kHz	ABM2 @ 1kHz	difference
-25.122	-25.124	0.002 dB

Frequency dependent ABM1 - ABM2 with broadband noise and narrowband tones driven externally into TMFS coil

Frequency	dB difference ABM1-ABM2 broadband signal	dB difference ABM1-ABM2 single frequency signals	ideal value for ABM1-ABM2	variance from ideal broadband	variance from ideal single frequencies
200		22.062	22.35		0.288
250			17.89		
315			14.03		
400		10.371	10.39		0.019
500	6.852		7.18	0.328	
630	4.228		4.36	0.132	
800	1.587	1.881	1.88	0.293	-0.001
1000	0.013	0.013	0	-0.013	-0.013
1250	-1.473		-1.46	0.013	
1600	-2.72		-2.58	0.14	
2000	-3.535	-3.235	-3.24	0.295	-0.005
2500	-3.736		-3.67	0.068	
3150	-3.837		-3.79	0.047	
4000	-3.733	-3.744	-3.75	-0.017	-0.006
5000	-3.283	-3.336	-3.34	-0.057	-0.004
<b>maximum variation from ideal:</b>				<b>0.328 dB</b>	

### **3-2) Details on the compliancy of the frequency and linearity response**

**(Description provided by Schmid & Partner Engineering, AG):**

See also probe certificate of conformity in Appendix 6, titled 880-SP AM1 001 A-A

See also coil certificate of conformity in Appendix 7, titled 880-SD HAC P02A-A

Frequency response has been tested to be within +/- 0.5 dB of ideal differentiator from 100 Hz to 10 kHz. The test was made with the real integrator and deducting the ideal integrator values. Reference signal was the Helmholtz calibration coil current which is equivalent to the field. The coil is qualified according to certificate 880-SD HAC P02 A-A.

The test data up to 5 kHz are visible directly in the calibration job result (coil current / shunt voltage, and probe voltage). Separate measurements were made for a very wide frequency range, including higher frequencies. For the third-octave bands up to 5 kHz do not exceed 0.05 dB and decay by < 0.2 dB to 5 kHz and by < 0.5 dB to 10 kHz, as required.

Linearity has also been tested and is stated in the certificate. Deviation was not measurable from 5 dB below limitation to 26 dB above noise level. For lower levels, the deviation increased to 0.1 dB at 16 dB above noise level, which corresponds to the theoretical value of 0.11 dB expected at that noise suppression level.

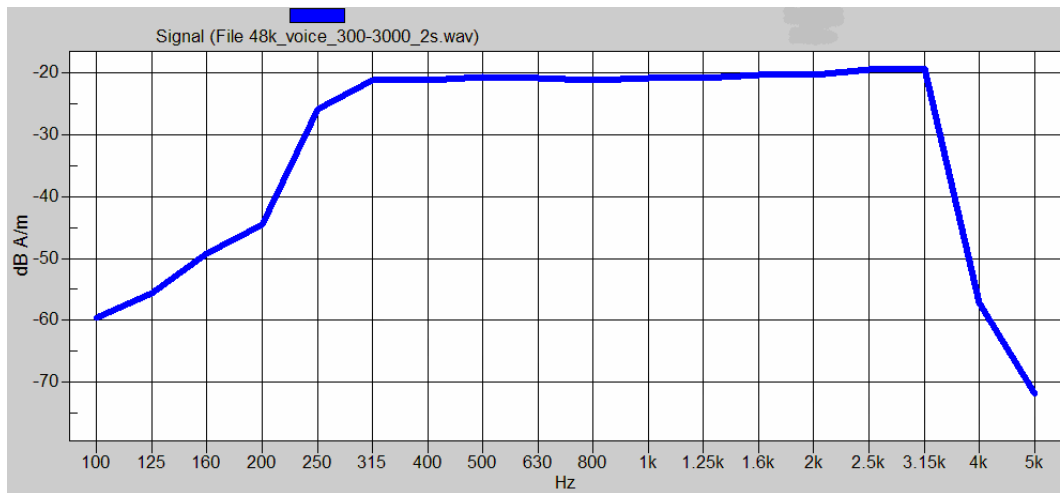
Significant noise contribution beyond 10 kHz will be attenuated by the convoluting A-filter as explained in answer #2. Such interferences contribute also to ABM2 represented as numerical value from the integration.

**3-3) Details on Measurements by the systems**

Details regarding timing and averaging of the reported final measured points are as follows:

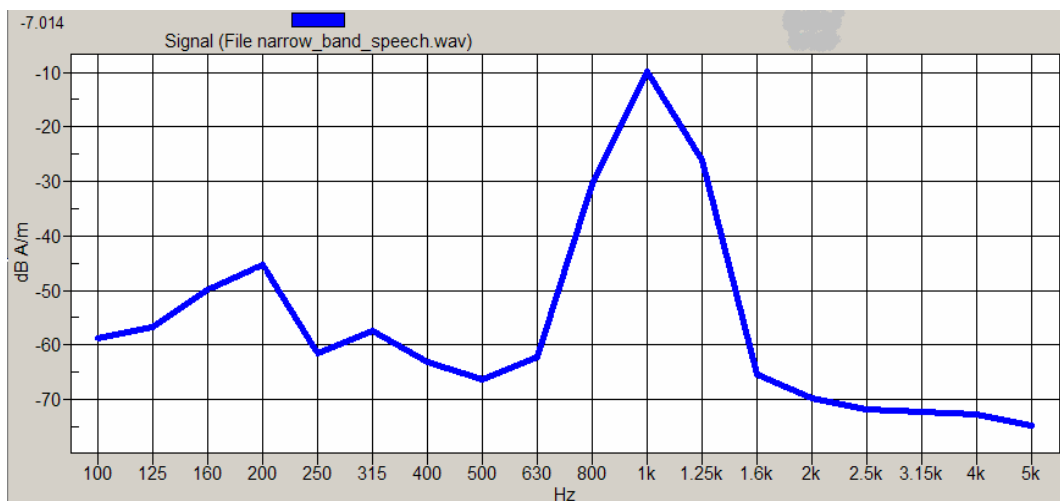
	Narrowband Signal	Broadband Signal
Signal Length (sec):	1	2
Total Data Acquisition Time per Location (sec):	2	12
	Averaging is over 2 signal repetitions	Averaging is over 6 signal repetitions

The broadband signal utilized is shown in the following plot:



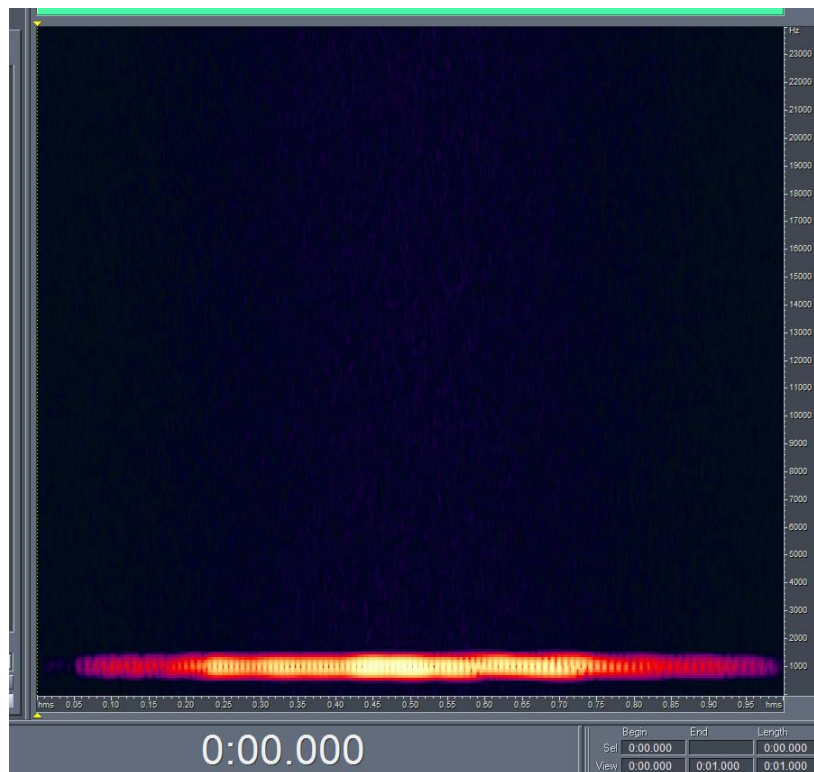
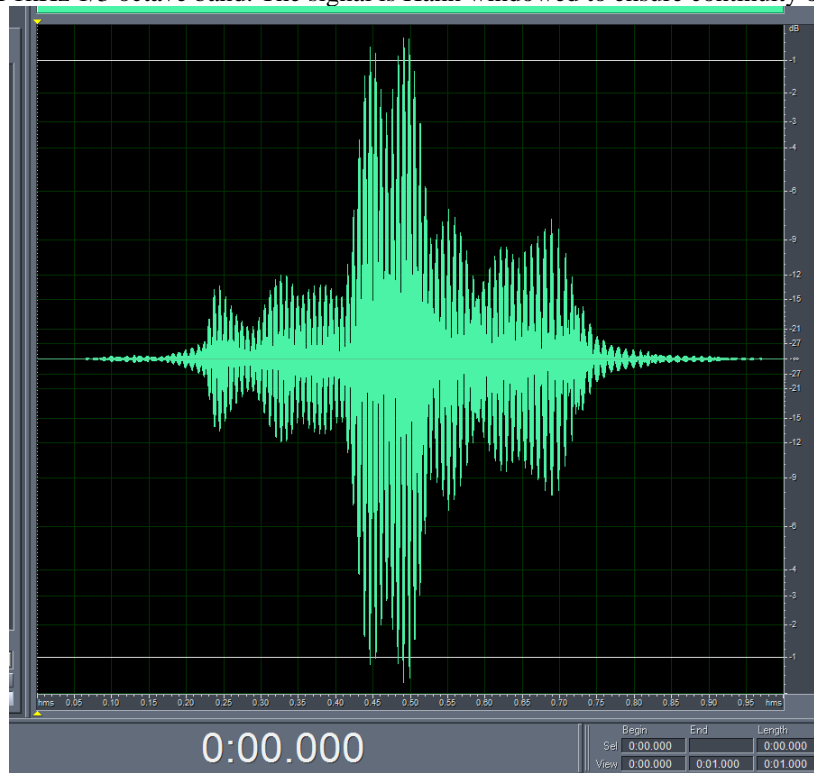
Mathematical processing is not required because the preferred method (as described in IEEE ANSI C63.19-2007 section 6.3) is utilized. The broadband audio signal is used only for assessment of frequency response. The DASY4 system corrects for the spectral response after measurement since it knows the spectrum of the input signal. However, please note that for the signal that we use, the spectrum is flat when measured in 1/3 octave bands, covering the range up to 3kHz.

The narrowband signal utilized is shown in the following plot:

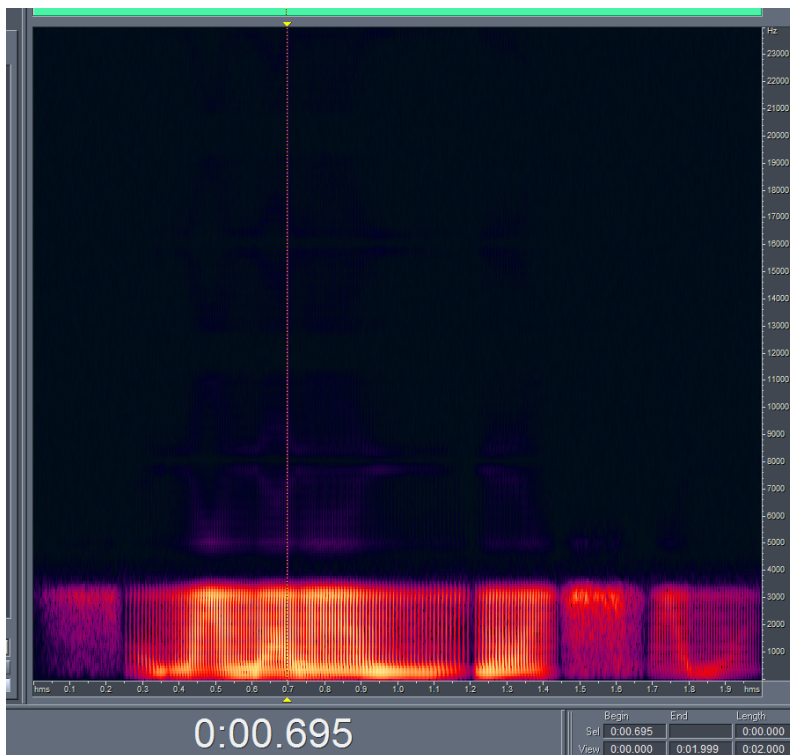
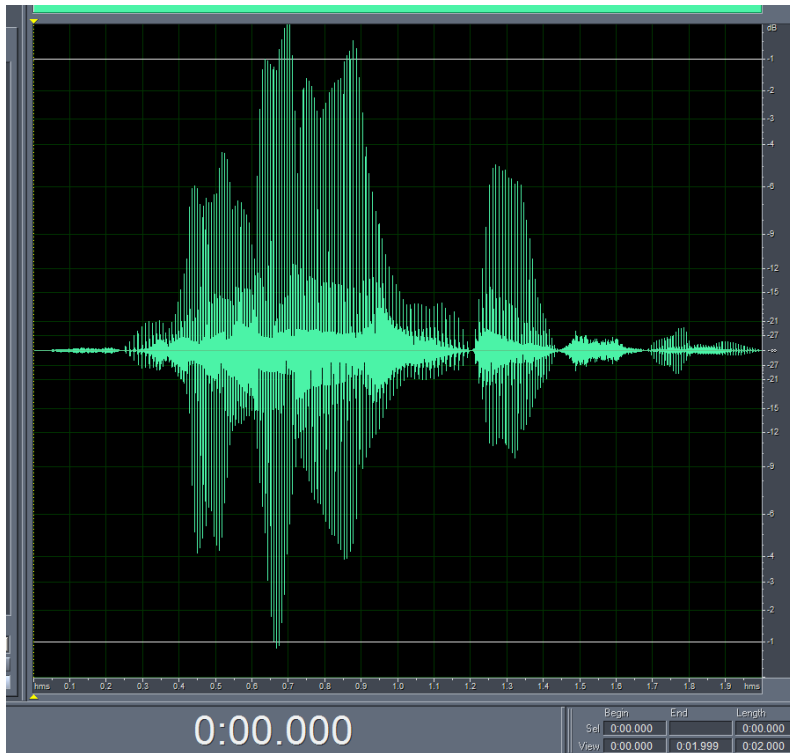


### **3-4) Details of the source audio signals for all aspects of the test**

Here is the temporal response of the narrow band signal. The signal is one second of the standard P.50 speech band limited to the ANSI 1kHz 1/3 octave band. The signal is Hann windowed to ensure continuity of the signal.



Here is the temporal response of the 300Hz-3kHz broadband signal. The signal is a 2 second segment of the standard P.50 speech that is equalized flat (for ANSI 1/3 octaves) over the 300Hz to 3kHz range. The signal is Hann windowed to ensure continuity of the signal.



**3-5) Details of the CMU-200 “0dBm0 Input Reference value”****Measure “Ref Input Level”**

- a) Generate a 1 kHz Sine Signal using AMMI.
- b) Capture a signal level using AMMI.
- c) Record the value as the "Ref Input Level"

**Measure Value “X”**

- d) Connect CMU to AMMI.
- e) Connect a phone which operates in the desired modulation to the CMU. Establish a call to the CMU. Select Decoder Cal on CMU.
- f) Capture a signal level from CMU using AMMI.
- g) Record the value as the "Value X".

**Measure Value “M”**

- h) Make another connection from AMMI to CMU. Change to Encoder Cal on CMU.
- i) Generate a 1 kHz Sine Signal using AMMI
- j) Capture a signal from CMU using AMMI.
- k) Record the value as the "Value M".

Calculate the resulting Input Correction Factor & the 0dBm0 Input Reference

**Relevant Equations:**

Measured values from above: Ref Input Level, X, M

Input Correction Factor = Ref Input Level + X – M

0dBm0 Input Reference =  $10^{(\text{Input Corr Factor}/20)}$  \* CMU-200 manual ref value

**Appendix 4**  
**Pictures of Test Setup**

See Exhibit 7B

**Appendix 5**  
**Motorola Uncertainty Budget**

**Table A5-1: Telecoil Uncertainty Budget, provided by SPEAG**

Error Description	Uncertainty value (%)	Prob. Dist.	Div.	c ABM1	c ABM2	St.Unc ABM1 (%)	St.Unc ABM2 (%)
<b>PROBE SENSITIVITY</b>							
Reference level	3.0	N	1	1	1	3.0	3.0
AMCC geometry	0.4	R	1.7	1	1	0.2	0.2
AMCC current	0.6	R	1.7	1	1	0.4	0.4
Probe positioning during calibration	0.1	R	1.7	1	1	0.1	0.1
Noise contribution	0.7	R	1.7	0.0143	1	0.0	0.4
Frequency slope	5.9	R	1.7	0.1	1	0.3	3.5
<b>PROBE SYSTEM</b>							
Repeatability / Drift	1.0	R	1.7	1	1	0.6	0.6
Linearity / Dynamic range	0.6	R	1.7	1	1	0.4	0.4
Acoustic noise	1.0	R	1.7	0.1	1	0.1	0.6
Probe angle	2.3	R	1.7	1	1	1.4	1.4
Spectral processing	0.9	R	1.7	1	1	0.5	0.5
Integration time	0.6	N	1	1	5	0.6	3.0
Field disturbance	0.2	R	1.7	1	1	0.1	0.1
<b>TEST SIGNAL</b>							
Reference signal spectral response	0.6	R	1.7	0	1	0.0	0.4
<b>POSITIONING</b>							
Probe positioning	1.9	R	1.7	1	1	1.1	1.1
Phantom thickness	0.9	R	1.7	1	1	0.5	0.5
DUT positioning **	4.0	R	1.7	1	1	2.4	2.4
<b>EXTERNAL CONTRIBUTIONS</b>							
RF interference	0.0	R	1.7	1	1	0.0	0.0
Test signal variation	2.0	R	1.7	1	1	1.2	1.2
<b>COMBINED UNCERTAINTY</b>							
<b>Combined Std.Uncert. (ABM field)</b>						4.6	6.5
<b>Expanded Std. Uncertainty, k=2 (%)</b>						9.1	12.9

\*\* based on repeat measurements of reference unit

## **Appendix 6**

### **Audio Magnetic Probe Certificate**

**Client****Motorola MDb****Certificate of test and configuration**

Item	<b>AM1DV2</b> Audio Magnetic 1D Field Probe
Type No	SP AM1 001 AA
Series No	<b>1003</b>
Manufacturer / Origin	Schmid & Partner Engineering AG, Zürich, Switzerland

**Description of the item**

The Audio Magnetic Field Probe is a fully shielded magnetic field probe for the frequency range from 100 Hz to 20 kHz. The pickup coil is compliant with the dimensional requirements of [1]. The probe includes a symmetric 40dB low noise amplifier for the signal available at the shielded 3 pin connector at the side. Power is supplied via the same connector (phantom power supply) and monitored via the LED near the connector. The 7 pin connector at the end of the probe does not carry any signals, but determines the angle of the sensor when mounted on the DAE. The probe supports mechanical detection of the surface. The single sensor in the probe is arranged in a tilt angle allowing measurement of 3 orthogonal field components when rotating the probe by 120° around its axis. It is aligned with the perpendicular component of the field, if the probe axis is tilted 35.3° above the measurement plane, using the connector rotation and Sensor angle stated below.

The probe is fully RF shielded when operated with the matching signal cable (shielded) and allows measurement of audio magnetic fields in the close vicinity of RF emitting wireless devices according to [1] without additional shielding.

**Handling of the item**

The probe is manufactured from stainless steel. In order to maintain the performance and calibration of the probe, it must not be opened. The probe is designed for operation in air and shall not be exposed to humidity or liquids. For proper operation of the surface detection and emergency stop functions in the DASY4 system, the probe must be operated with the special probe cup provided (larger diameter). Verify that the probe can slide in the probe cup rubber smoothly.

**Functional test, configuration data and sensitivity**

The probe configuration data were evaluated after a functional test including noise level and RF immunity. Connector rotation, sensor angle and sensitivity are specific for this probe.

**DASY4 configuration data for the probe**

Configuration item	Condition	Configuration Data	Dimension
Overall length	mounted on DAE in DASY4 system	296	mm
Tip diameter	at the cylindrical part	6	mm
Sensor offset	center of sensor, from tip	3	mm
Connector rotation	Evaluated in homogeneous 1 kHz magnetic field generated with AMCC Helmholtz Calibration Coil	<b>91.8</b>	°
Sensor angle		<b>4.00</b>	°
Sensitivity	at 1 kHz	<b>0.0666</b>	V / (A/m)

**Standards**

[1] ANSI-C63.19-2006

**Test date** 21.03.2007 MM / FB**Issue date** 23.03.2007**Signature**


Zeughausstrasse 43, 8004 Zurich, Switzerland  
 Phone +41 1 245 9700, Fax +41 1 245 9779  
 info@speag.com, http://www.speag.com

### Certificate of conformity

Item	Audio Magnetic 1D Field Probe AM1DV2
Type No	SP AM1 001 A
Series No	1001 ff.
Manufacturer / Origin	Schmid & Partner Engineering AG Zurich, Switzerland

#### Description of the item

The Audio Magnetic Field Probe AM1DV2 is a fully RF shielded magnetic field probe for the frequency range from 100 Hz to 20 kHz. The signal from the pickup coil is amplified in a symmetric 40dB low noise amplifier and fed to a 3 pin connector at the side. Power is supplied via the same and monitored via the LED near the connector. The single sensor in the probe is arranged in a tilt angle allowing measurement of 3 orthogonal field components by rotating the probe around its axis.

#### Handling of the item

The probe is manufactured and designed for operation in air and shall not be exposed to humidity or liquids. In order to keep the performance and alignment, the probe must not be disassembled. The full performance can only be achieved using the SPEAG provided accessories and following the corresponding manual.

#### Tests

Test	Requirement	Details	Units tested
Sensor angle	Probe configuration data for alignment with field	see corresponding probe certificate	all
Dimensions	according to corresponding probe certificate	verified at delivery / light beam alignment prior to measurement usage	all / in setup by user
Frequency response	within +/- 0.5 dB of ideal differentiator from 100 Hz to 10 kHz	Coil current of AMCC measured with R&S UPL, probe including amplifier and AMMI ADC input	First article
Dynamic range	max. + 21 dB A/m @ 1 kHz Noise level typ. -70 dB A/m @ 1 kHz ABM2 typ. -60 dB A/m	with AMMI	Samples / all
Linearity	within < 0.1 dB from 5 dB below limitation to 16 dB above noise level	tested between +15 dB A/m @ 1 kHz, to -70 dB A/m @ 10 kHz	Samples
Sensitivity	typ. -24 dBV / A/m @ 1 kHz at probe output	verified at delivery / calibrated in setup prior to measurement usage	all / in setup by user
RF shielding	immunity to AM modulated RF signal	1 kHz 80 % AM	all

#### Standards

[1] ANSI PC63.19-2006 Draft 3.12

#### Conformity

Based on the tests above, we certify that this item is in compliance with the requirements of [1].

Date 22.5.2006

Stamp / Signature

**s p e a g**  
 Schmid & Partner Engineering AG  
 Zeughausstrasse 43, 8004 Zurich, Switzerland  
 Phone +41 1 245 9700, Fax +41 1 245 9779  
 info@speag.com, http://www.speag.com

**Appendix 7**

**AMCC Certificate (Helmholz Coil)**

**Certificate of conformity**

Item	Audio Magnetic Calibration Coil AMCC
Type No	SD HAC P02 A
Series No	1001 ff.
Manufacturer / Origin	Schmid & Partner Engineering AG Zurich, Switzerland

**Description of the item**

The Audio Magnetic Calibration coil (AMCC) is a Helmholtz Coil designed according to standard [1], section D.9 for calibration of the AM1D probe. Two horizontal coils are positioned above a non-metallic base plate and generate a homogeneous magnetic field in the z direction (normal to it).

**Configuration**

The AMCC consists of two parallel coils of 20 turns with radius 143 mm connected in parallel in a distance of 143 mm. With this design, a current of 10 mA produces a field of 1 A/m. The DC input resistance at the input BNC socket is adjusted by a series resistor to a DC resistance of approximately 50 Ohm. The voltage required to produce a field of 1 A/m is consequently approx. 500 mV.

The current through the coil is monitored via a shunt resistor of 10 Ohm +/- 1%. The voltage is available on a BNO socket with 100 mV corresponding to 1 A/m.

**Handling of the item**

The coil shall be positioned in a non-metallic environment to avoid distortion of the magnetic field.

**Tests**

Test	Requirement	Details	Units tested
Number of turns	N = 20 per coil	Resistance measurement	all
Orientation of coils	parallel coils with same direction of windings	Magnetic field variation in the AMCC axis	all
Coil radius	r = 143 mm	mechanical dimension	First article
Coil distance	d = 143 mm distance between coil centers	mechanical dimension	First article
Input resistance	51.7 +/- 2 Ohm	DC resistance at BNC input connector	all
Shunt resistance	R = 10.0 Ohm +/- 1 %	DC resistance at BNO output connector	all
Shunt sensitivity	Hc = 1 A/m per 100 mV according to formula $H_c = (U / R) * N / r / (1.25^{*1.5})$	Field measurement compared with Narda ELT400 + BN2300/90.10	First article

**Standards**

[1] ANSI PC63.19-2006 Draft 3.12

**Conformity**

Based on the tests above, we certify that this item is in compliance with the requirements of [1].

Date

22.5.2006

Stamp / Signature

**s p e a g**

Schmid & Partner Engineering AG  
Zeughausstrasse 43, 8004 Zurich, Switzerland  
Phone +41 1 245 9700, Fax +41 1 245 9779  
info@speag.com, http://www.speag.com

## **Appendix 8**

### **HAC Distribution plots for E-Field and H-Field**

Date/Time: 8/22/2008 2:29:19 PM

## Test Laboratory: Motorola - CDMA 800 E-Field, Slider Extended

Serial: 80684D51; FCC ID: IHDP56JX2

Procedure Notes: Pwr Step: All Up Bits; Antenna Position: Internal; Battery Model #:SNN5833A

Vocoder Rate: Full Rate; PMF Value: 1.03; Positioner: SPEAG Clamp

Communication System: CDMA 835; Frequency: 836.52 MHz; Channel Number: 384; Duty Cycle: 1:1

Medium: Air; Medium parameters used:  $\sigma = 0$  mho/m,  $\epsilon_r = 1$ ;  $\rho = 0$  kg/m<sup>3</sup>

DASY4 Configuration:

- Probe: ER3DV6R - SN2245; ConvF(1, 1, 1); Calibrated: 11/20/2007
- Sensor-Surface: (Fix Surface)
- Electronics: DAE3 Sn440; Calibrated: 1/28/2008
- Phantom: R-3, HAC Test Arch (rev.2); Type: SD HAC P01 BA; Serial: 1071;
- Measurement SW: DASY4, V4.7 Build 71; Postprocessing SW: SEMCAD, V1.8 Build 184

### E Scan - Sensor center 15mm above WD, Hearing Aid Compatibility Test (101x101x1):

Measurement grid: dx=5mm, dy=5mm

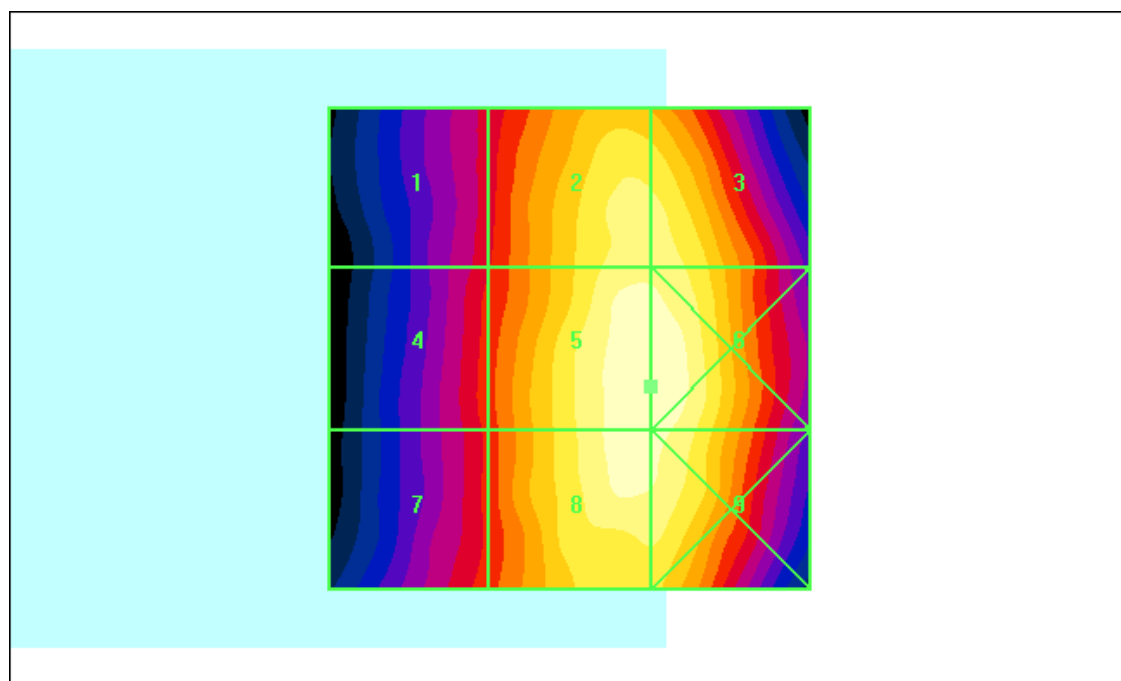
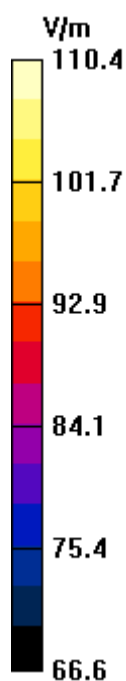
Maximum value of peak Total field = 110.4 V/m; Probe Modulation Factor = 1.03

Device Reference Point: 0.000, 0.000, -6.30 mm; Reference Value = 127.7 V/m; Power Drift = 0.027 dB

Hearing Aid Near-Field Category: **M4 (AWF 0 dB)**

Peak E-field in V/m

Grid 1 <b>89.6 M4</b>	Grid 2 <b>106.8 M4</b>	Grid 3 <b>106.8 M4</b>
Grid 4 <b>91.8 M4</b>	Grid 5 <b>110.4 M4</b>	Grid 6 <b>110.4 M4</b>
Grid 7 <b>91.9 M4</b>	Grid 8 <b>109.1 M4</b>	Grid 9 <b>108.9 M4</b>



Date/Time: 9/3/2008 2:37:40 PM

## Test Laboratory: Motorola - CDMA 800 E-Field, Slider Retracted

Serial: 80684D51; FCC ID: IHDP56JX2

Procedure Notes: Pwr Step: All Up Bits; Antenna Position: Internal; Battery Model #:SNN5833A

Vocoder Rate: Full Rate; PMF Value: 1.03; Positioner: SPEAG Clamp

Communication System: CDMA 835; Frequency: 836.52 MHz; Channel Number: 384; Duty Cycle: 1:1

Medium: Air; Medium parameters used:  $\sigma = 0$  mho/m,  $\epsilon_r = 1$ ;  $\rho = 0$  kg/m<sup>3</sup>

DASY4 Configuration:

- Probe: ER3DV6R - SN2245; ConvF(1, 1, 1); Calibrated: 11/20/2007
- Sensor-Surface: (Fix Surface)
- Electronics: DAE3 Sn440; Calibrated: 1/28/2008
- Phantom: R-3, HAC Test Arch (rev.2); Type: SD HAC P01 BA; Serial: 1071;
- Measurement SW: DASY4, V4.7 Build 71; Postprocessing SW: SEMCAD, V1.8 Build 184

### E Scan - Sensor center 15mm above WD, Hearing Aid Compatibility Test (101x101x1):

Measurement grid: dx=5mm, dy=5mm

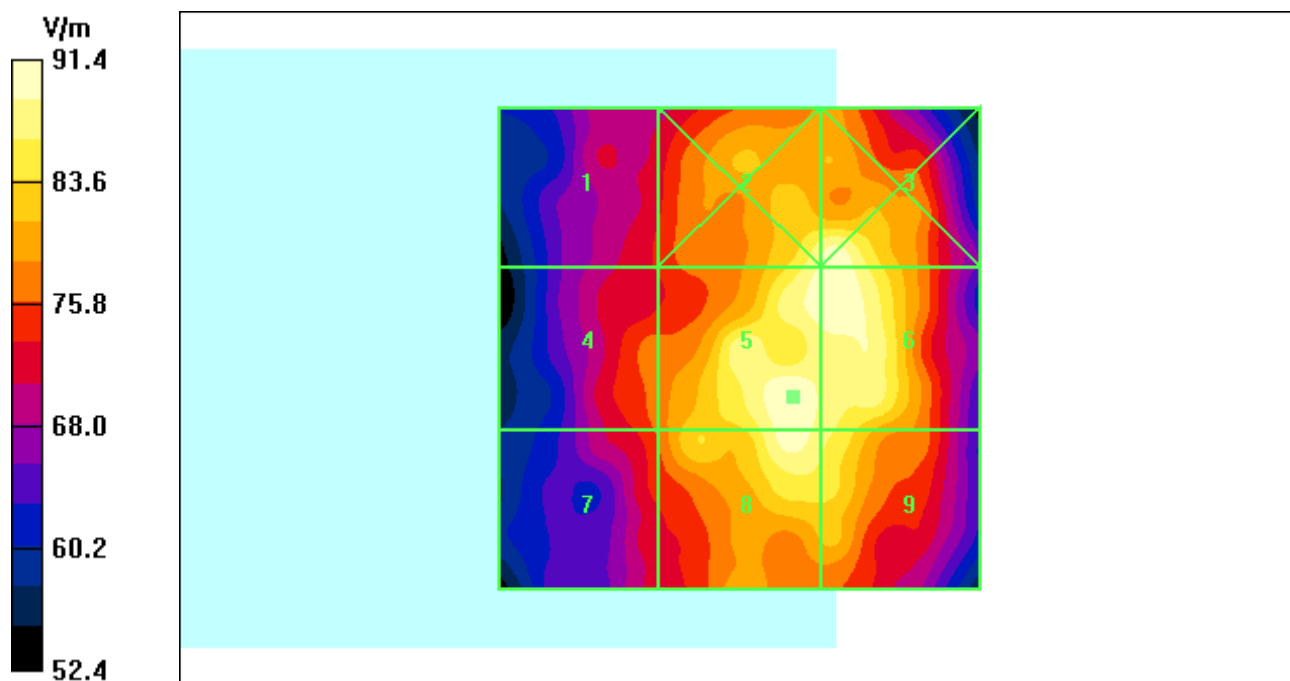
Maximum value of peak Total field = 91.4 V/m; Probe Modulation Factor = 1.03

Device Reference Point: 0.000, 0.000, -6.30 mm; Reference Value = 102.9 V/m; Power Drift = -0.075 dB

Hearing Aid Near-Field Category: **M4 (AWF 0 dB)**

Peak E-field in V/m

Grid 1 <b>73.7 M4</b>	Grid 2 <b>89.6 M4</b>	Grid 3 <b>90.6 M4</b>
Grid 4 <b>77.4 M4</b>	Grid 5 <b>91.4 M4</b>	Grid 6 <b>90.9 M4</b>
Grid 7 <b>76.4 M4</b>	Grid 8 <b>90.1 M4</b>	Grid 9 <b>87.5 M4</b>



Date/Time: 8/22/2008 2:49:10 PM

## Test Laboratory: Motorola - CDMA 800 E-Field, Slider Extended

Serial: 80684D51; FCC ID: IHDP56JX2

Procedure Notes: Pwr Step: All Up Bits; Antenna Position: Internal; Battery Model #:SNN5833A

Vocoder Rate: 1/8 Rate; PMF Value: 2.78; Positioner: SPEAG Clamp

Communication System: CDMA 835; Frequency: 836.52 MHz; Channel Number: 384; Duty Cycle: 1:8

Medium: Air; Medium parameters used:  $\sigma = 0$  mho/m,  $\epsilon_r = 1$ ;  $\rho = 0$  kg/m<sup>3</sup>

DASY4 Configuration:

- Probe: ER3DV6R - SN2245; ConvF(1, 1, 1); Calibrated: 11/20/2007
- Sensor-Surface: (Fix Surface)
- Electronics: DAE3 Sn440; Calibrated: 1/28/2008
- Phantom: R-3, HAC Test Arch (rev.2); Type: SD HAC P01 BA; Serial: 1071;
- Measurement SW: DASY4, V4.7 Build 71; Postprocessing SW: SEMCAD, V1.8 Build 184

### E Scan - Sensor center 15mm above WD, Hearing Aid Compatibility Test (101x101x1):

Measurement grid: dx=5mm, dy=5mm

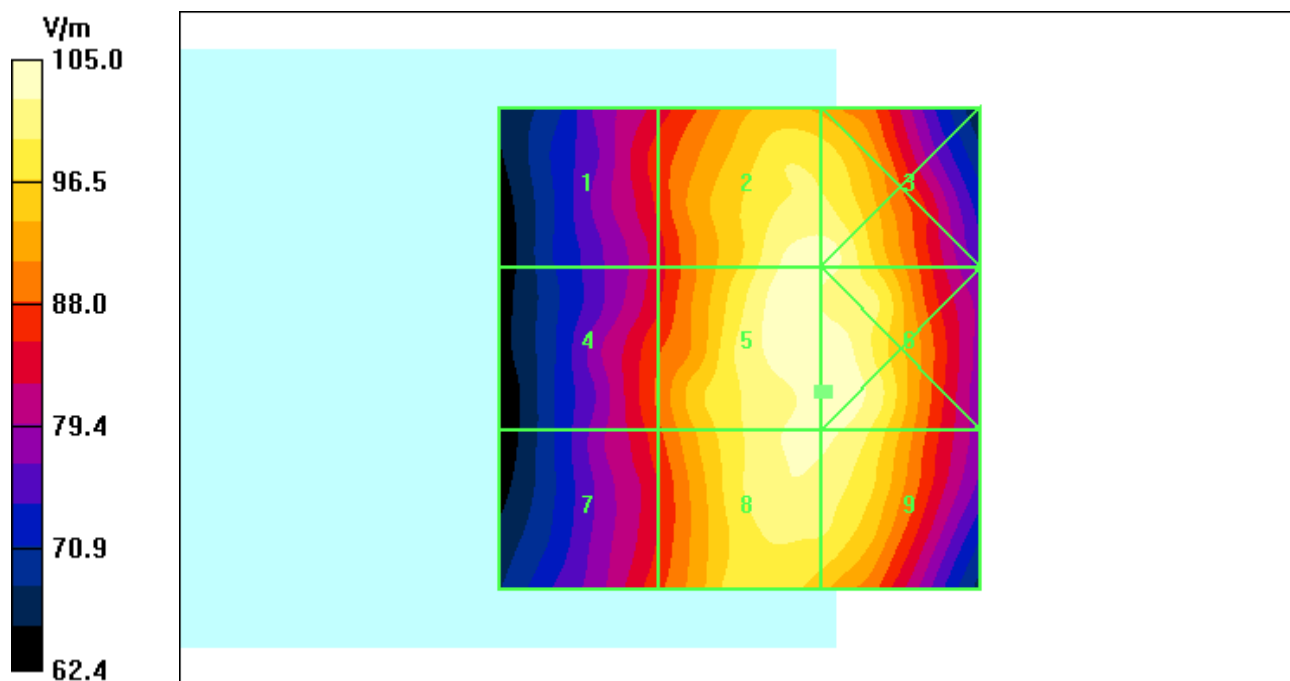
Maximum value of peak Total field = 104.8 V/m; Probe Modulation Factor = 2.78

Device Reference Point: 0.000, 0.000, -6.30 mm; Reference Value = 45.0 V/m; Power Drift = 0.012 dB

Hearing Aid Near-Field Category: **M4 (AWF 0 dB)**

Peak E-field in V/m

Grid 1 <b>86.6 M4</b>	Grid 2 <b>103.4 M4</b>	Grid 3 <b>103.4 M4</b>
Grid 4 <b>88.5 M4</b>	Grid 5 <b>104.8 M4</b>	Grid 6 <b>105.0 M4</b>
Grid 7 <b>87.3 M4</b>	Grid 8 <b>103.1 M4</b>	Grid 9 <b>103.1 M4</b>



Date/Time: 9/3/2008 3:33:20 PM

## Test Laboratory: Motorola - CDMA 800 E-Field, Slider Retracted

Serial: 80684D51; FCC ID: IHDP56JX2

Procedure Notes: Pwr Step: All Up Bits; Antenna Position: Internal; Battery Model #:SNN5833A

Vocoder Rate: 1/8 Rate; PMF Value: 2.78; Positioner: SPEAG Clamp

Communication System: CDMA 835; Frequency: 836.52 MHz; Channel Number: 384; Duty Cycle: 1:8

Medium: Air; Medium parameters used:  $\sigma = 0$  mho/m,  $\epsilon_r = 1$ ;  $\rho = 0$  kg/m<sup>3</sup>

DASY4 Configuration:

- Probe: ER3DV6R - SN2245; ConvF(1, 1, 1); Calibrated: 11/20/2007
- Sensor-Surface: (Fix Surface)
- Electronics: DAE3 Sn440; Calibrated: 1/28/2008
- Phantom: R-3, HAC Test Arch (rev.2); Type: SD HAC P01 BA; Serial: 1071;
- Measurement SW: DASY4, V4.7 Build 71; Postprocessing SW: SEMCAD, V1.8 Build 184

### E Scan - Sensor center 15mm above WD, Hearing Aid Compatibility Test (101x101x1):

Measurement grid: dx=5mm, dy=5mm

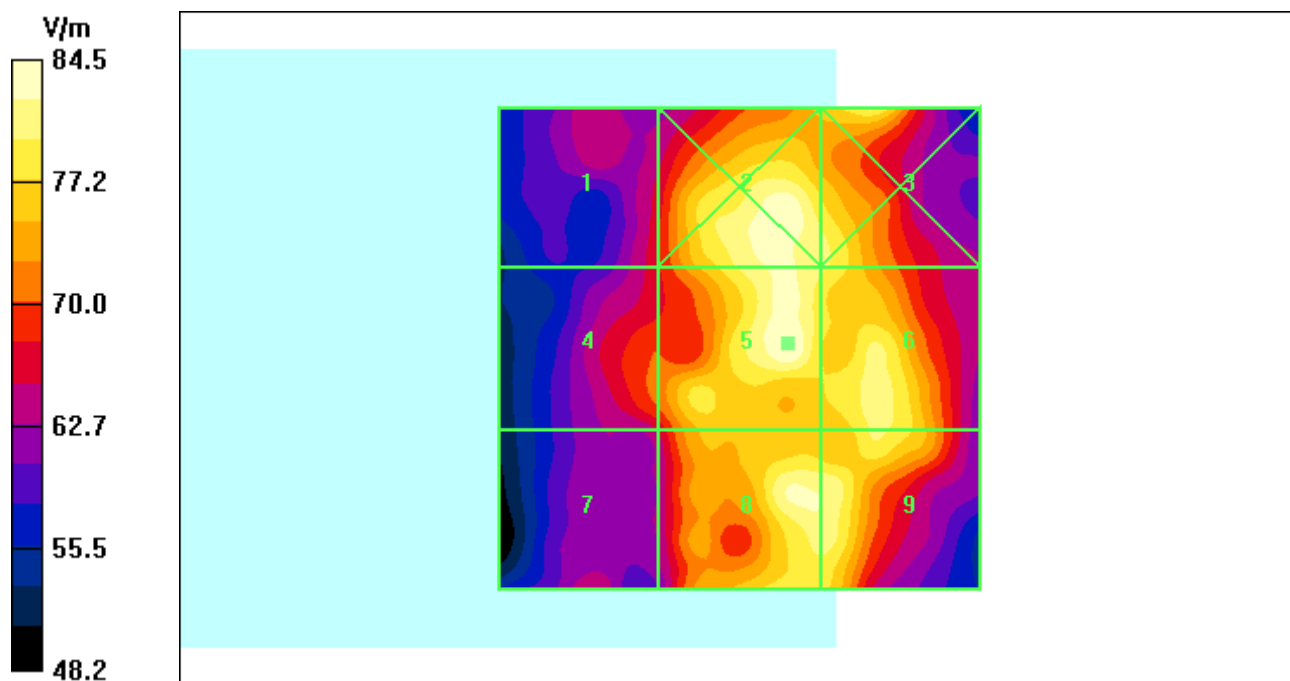
Maximum value of peak Total field = 84.5 V/m; Probe Modulation Factor = 2.78

Device Reference Point: 0.000, 0.000, -6.30 mm; Reference Value = 35.2 V/m; Power Drift = -0.039 dB

Hearing Aid Near-Field Category: **M4 (AWF 0 dB)**

Peak E-field in V/m

Grid 1 <b>67.1 M4</b>	Grid 2 <b>83.9 M4</b>	Grid 3 <b>81.2 M4</b>
Grid 4 <b>71.3 M4</b>	Grid 5 <b>84.5 M4</b>	Grid 6 <b>81.2 M4</b>
Grid 7 <b>65.4 M4</b>	Grid 8 <b>82.6 M4</b>	Grid 9 <b>82.1 M4</b>



Date/Time: 8/22/2008 1:26:38 PM

## Test Laboratory: Motorola - CDMA 1700 E-Field, Slider Extended

Serial: 80684D51; FCC ID: IHDP56JX2

Procedure Notes: Pwr Step: All Up Bits; Antenna Position: Internal; Battery Model #:SNN5833A

Vocoder Rate: Full Rate; PMF Value: 1.06; Positioner: SPEAG Clamp

Communication System: CDMA 1700; Frequency: 1753.75 MHz; Channel Number: 875; Duty Cycle: 1:1

Medium: Air; Medium parameters used:  $\sigma = 0$  mho/m,  $\epsilon_r = 1$ ;  $\rho = 0$  kg/m<sup>3</sup>

DASY4 Configuration:

- Probe: ER3DV6R - SN2245; ConvF(1, 1, 1); Calibrated: 11/20/2007
- Sensor-Surface: (Fix Surface)
- Electronics: DAE3 Sn440; Calibrated: 1/28/2008
- Phantom: R-3, HAC Test Arch (rev.2); Type: SD HAC P01 BA; Serial: 1071;
- Measurement SW: DASY4, V4.7 Build 71; Postprocessing SW: SEMCAD, V1.8 Build 184

### E Scan - Sensor center 15mm above WD, Hearing Aid Compatibility Test (101x101x1):

Measurement grid: dx=5mm, dy=5mm

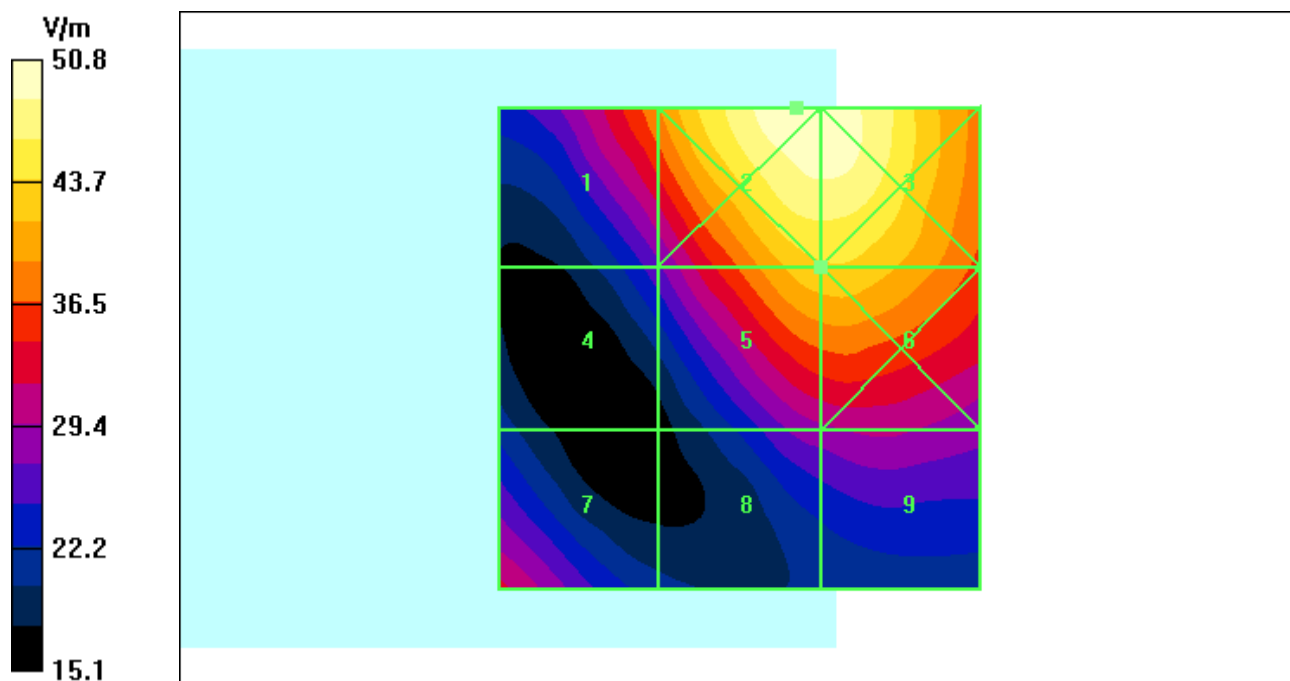
Maximum value of peak Total field = 43.3 V/m; Probe Modulation Factor = 1.06

Device Reference Point: 0.000, 0.000, -6.30 mm; Reference Value = 33.9 V/m; Power Drift = -0.025 dB

Hearing Aid Near-Field Category: **M4 (AWF 0 dB)**

Peak E-field in V/m

Grid 1 <b>38.7 M4</b>	Grid 2 <b>50.8 M4</b>	Grid 3 <b>50.1 M4</b>
Grid 4 <b>26.5 M4</b>	Grid 5 <b>43.3 M4</b>	Grid 6 <b>43.5 M4</b>
Grid 7 <b>32.8 M4</b>	Grid 8 <b>28.7 M4</b>	Grid 9 <b>29.9 M4</b>



Date/Time: 9/4/2008 12:58:36 PM

## Test Laboratory: Motorola - CDMA 1700 E-Field, Slider Retracted

Serial: 80684D51; FCC ID: IHDP56JX2

Procedure Notes: Pwr Step: All Up Bits; Antenna Position: Internal; Battery Model #:SNN5833A

Vocoder Rate: Full Rate; PMF Value: 1.06; Positioner: SPEAG Clamp

Communication System: CDMA 1700; Frequency: 1711.25 MHz; Channel Number: 25; Duty Cycle: 1:1

Medium: Air; Medium parameters used:  $\sigma = 0$  mho/m,  $\epsilon_r = 1$ ;  $\rho = 0$  kg/m<sup>3</sup>

DASY4 Configuration:

- Probe: ER3DV6R - SN2245; ConvF(1, 1, 1); Calibrated: 11/20/2007
- Sensor-Surface: (Fix Surface)
- Electronics: DAE3 Sn440; Calibrated: 1/28/2008
- Phantom: R-3, HAC Test Arch (rev.2); Type: SD HAC P01 BA; Serial: 1071;
- Measurement SW: DASY4, V4.7 Build 71; Postprocessing SW: SEMCAD, V1.8 Build 184

### E Scan - Sensor center 15mm above WD, Hearing Aid Compatibility Test (101x101x1):

Measurement grid: dx=5mm, dy=5mm

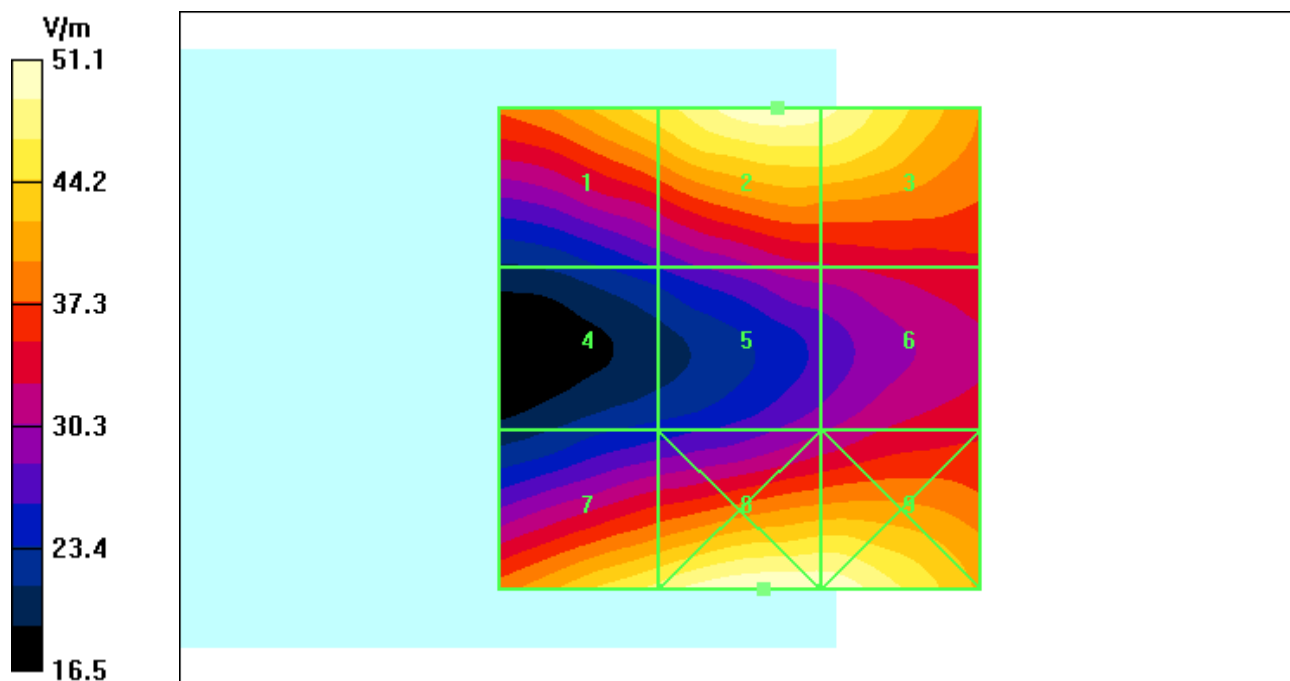
Maximum value of peak Total field = 50.7 V/m; Probe Modulation Factor = 1.06

Device Reference Point: 0.000, 0.000, -6.30 mm; Reference Value = 17.3 V/m; Power Drift = -0.086 dB

Hearing Aid Near-Field Category: **M4 (AWF 0 dB)**

Peak E-field in V/m

Grid 1 <b>45.8 M4</b>	<b>Grid 2</b> <b>50.7 M4</b>	Grid 3 <b>49.6 M4</b>
Grid 4 <b>26.0 M4</b>	Grid 5 <b>32.3 M4</b>	Grid 6 <b>34.6 M4</b>
Grid 7 <b>47.5 M4</b>	<b>Grid 8</b> <b>51.1 M4</b>	<b>Grid 9</b> <b>50.9 M4</b>



Date/Time: 8/22/2008 1:00:23 PM

## Test Laboratory: Motorola - CDMA 1700 E-Field, Slider Extended

Serial: 80684D51; FCC ID: IHDP56JX2

Procedure Notes: Pwr Step: All Up Bits; Antenna Position: Internal; Battery Model #:SNN5833A

Vocoder Rate: 1/8 Rate; PMF Value: 2.95; Positioner: SPEAG Clamp

Communication System: CDMA 1700; Frequency: 1753.75 MHz; Channel Number: 875; Duty Cycle: 1:8

Medium: Air; Medium parameters used:  $\sigma = 0$  mho/m,  $\epsilon_r = 1$ ;  $\rho = 0$  kg/m<sup>3</sup>

DASY4 Configuration:

- Probe: ER3DV6R - SN2245; ConvF(1, 1, 1); Calibrated: 11/20/2007
- Sensor-Surface: (Fix Surface)
- Electronics: DAE3 Sn440; Calibrated: 1/28/2008
- Phantom: R-3, HAC Test Arch (rev.2); Type: SD HAC P01 BA; Serial: 1071;
- Measurement SW: DASY4, V4.7 Build 71; Postprocessing SW: SEMCAD, V1.8 Build 184

### E Scan - Sensor center 15mm above WD, Hearing Aid Compatibility Test (101x101x1):

Measurement grid: dx=5mm, dy=5mm

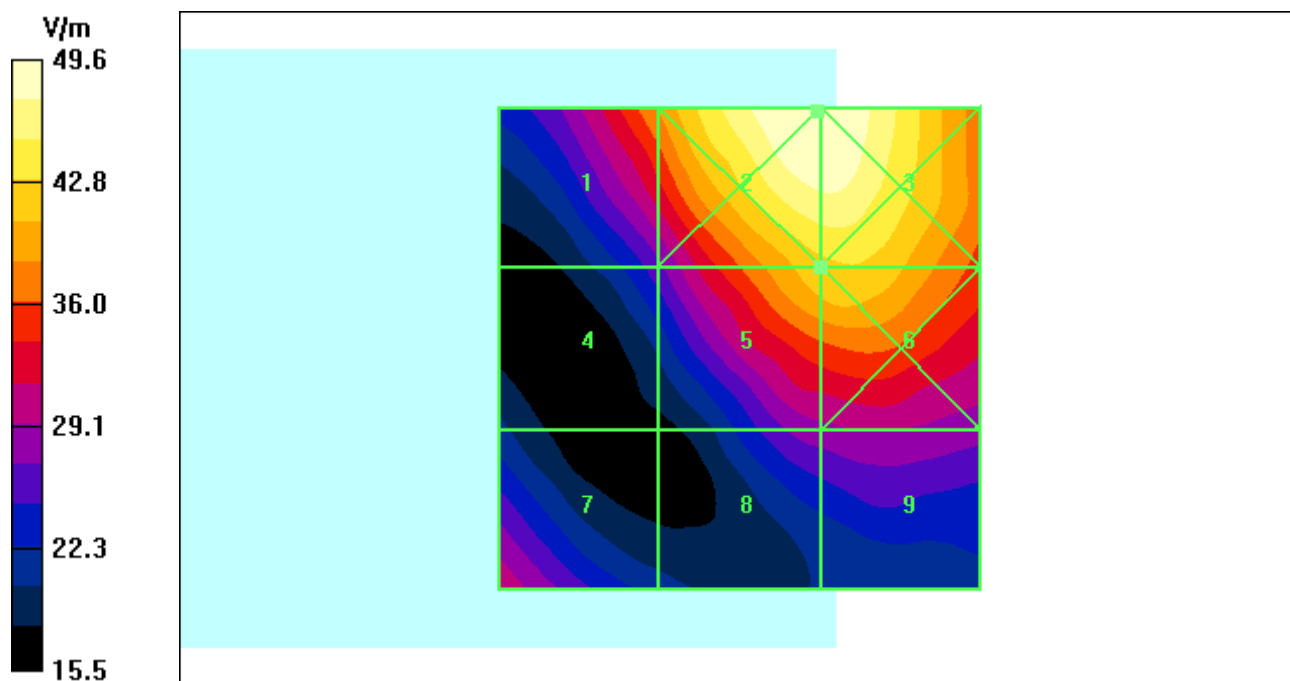
Maximum value of peak Total field = 42.2 V/m; Probe Modulation Factor = 2.95

Device Reference Point: 0.000, 0.000, -6.30 mm; Reference Value = 12.2 V/m; Power Drift = -0.103 dB

Hearing Aid Near-Field Category: **M4 (AWF 0 dB)**

Peak E-field in V/m

Grid 1 <b>38.6 M4</b>	Grid 2 <b>49.6 M4</b>	Grid 3 <b>49.6 M4</b>
Grid 4 <b>26.3 M4</b>	Grid 5 <b>42.2 M4</b>	Grid 6 <b>42.7 M4</b>
Grid 7 <b>31.1 M4</b>	Grid 8 <b>28.4 M4</b>	Grid 9 <b>29.2 M4</b>



Date/Time: 9/4/2008 1:28:59 PM

## Test Laboratory: Motorola - CDMA 1700 E-Field, Slider Retracted

Serial: 80684D51; FCC ID: IHDP56JX2

Procedure Notes: Pwr Step: All Up Bits; Antenna Position: Internal; Battery Model #:SNN5833A

Vocoder Rate: 1/8 Rate; PMF Value: 2.95; Positioner: SPEAG Clamp

Communication System: CDMA 1700; Frequency: 1711.25 MHz; Channel Number: 25; Duty Cycle: 1:8

Medium: Air; Medium parameters used:  $\sigma = 0$  mho/m,  $\epsilon_r = 1$ ;  $\rho = 0$  kg/m<sup>3</sup>

DASY4 Configuration:

- Probe: ER3DV6R - SN2245; ConvF(1, 1, 1); Calibrated: 11/20/2007
- Sensor-Surface: (Fix Surface)
- Electronics: DAE3 Sn440; Calibrated: 1/28/2008
- Phantom: R-3, HAC Test Arch (rev.2); Type: SD HAC P01 BA; Serial: 1071;
- Measurement SW: DASY4, V4.7 Build 71; Postprocessing SW: SEMCAD, V1.8 Build 184

### E Scan - Sensor center 15mm above WD, Hearing Aid Compatibility Test (101x101x1):

Measurement grid: dx=5mm, dy=5mm

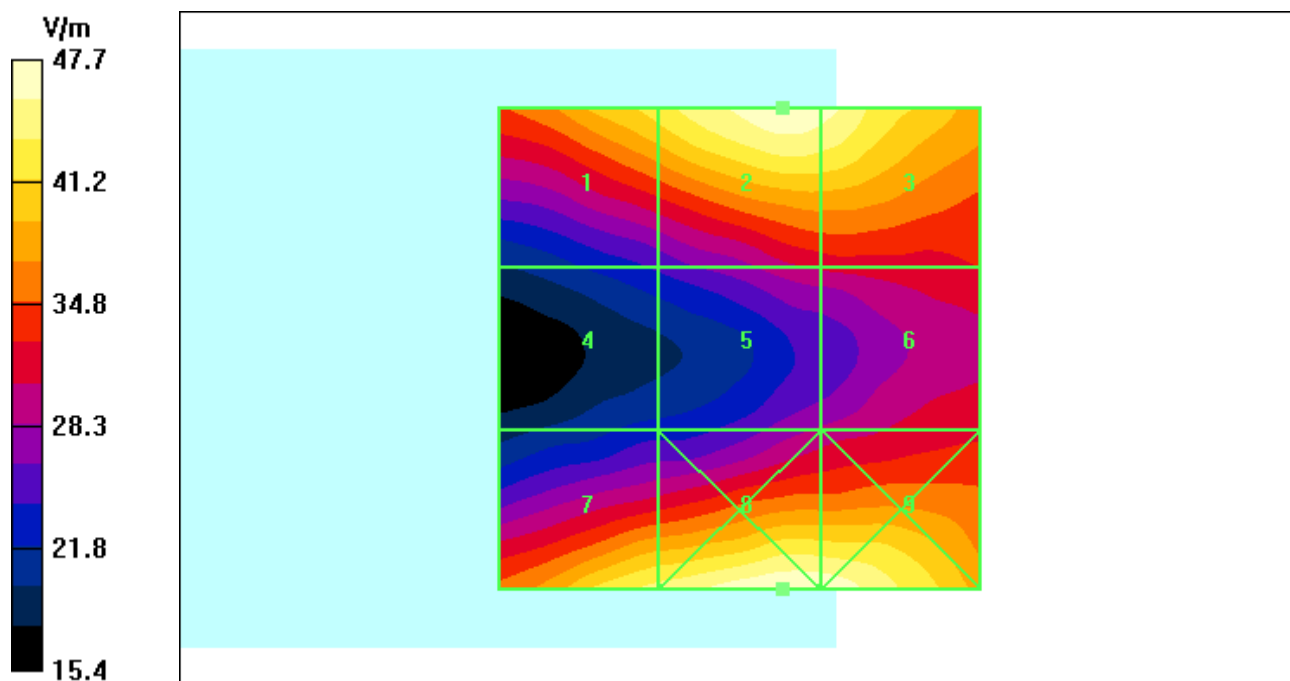
Maximum value of peak Total field = 47.3 V/m; Probe Modulation Factor = 2.95

Device Reference Point: 0.000, 0.000, -6.30 mm; Reference Value = 5.95 V/m; Power Drift = 0.099 dB

Hearing Aid Near-Field Category: **M4 (AWF 0 dB)**

Peak E-field in V/m

Grid 1 <b>42.4 M4</b>	<b>Grid 2</b> <b>47.3 M4</b>	Grid 3 <b>46.4 M4</b>
Grid 4 <b>24.6 M4</b>	Grid 5 <b>31.0 M4</b>	Grid 6 <b>32.7 M4</b>
Grid 7 <b>44.3 M4</b>	<b>Grid 8</b> <b>47.7 M4</b>	<b>Grid 9</b> <b>47.4 M4</b>



Date/Time: 8/24/2008 1:10:29 PM

## Test Laboratory: Motorola - CDMA 1900 E-Field, Slider Extended

Serial: 80684D51; FCC ID: IHDP56JX2

Procedure Notes: Pwr Step: All Up Bits; Antenna Position: Internal; Battery Model #:SNN5833A

Vocoder Rate: Full Rate; PMF Value: 1.07; Positioner: SPEAG Clamp

Communication System: CDMA 1900; Frequency: 1908.75 MHz; Channel Number: 1175; Duty Cycle: 1:1

Medium: Air; Medium parameters used:  $\sigma = 0$  mho/m,  $\epsilon_r = 1$ ;  $\rho = 0$  kg/m<sup>3</sup>

DASY4 Configuration:

- Probe: ER3DV6R - SN2245; ConvF(1, 1, 1); Calibrated: 11/20/2007
- Sensor-Surface: (Fix Surface)
- Electronics: DAE3 Sn440; Calibrated: 1/28/2008
- Phantom: R-3, HAC Test Arch (rev.2); Type: SD HAC P01 BA; Serial: 1071;
- Measurement SW: DASY4, V4.7 Build 71; Postprocessing SW: SEMCAD, V1.8 Build 184

### E Scan - Sensor center 15mm above WD, Hearing Aid Compatibility Test (101x101x1):

Measurement grid: dx=5mm, dy=5mm

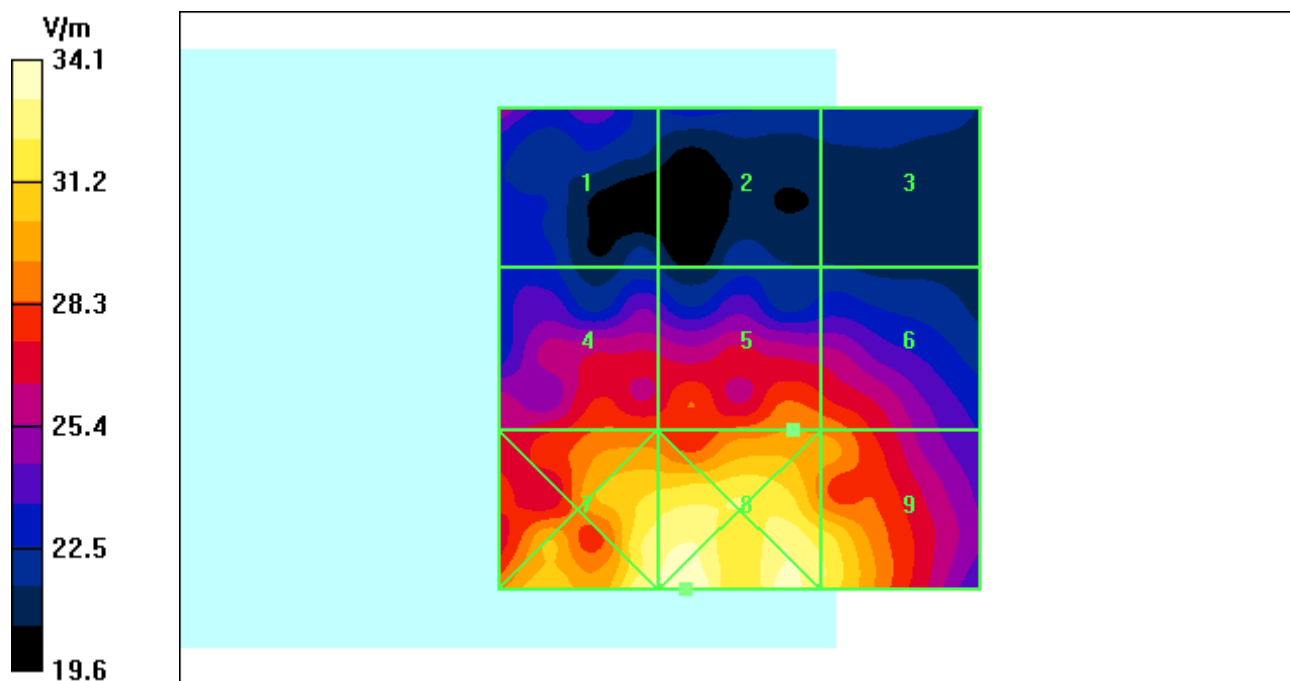
Maximum value of peak Total field = 32.4 V/m; Probe Modulation Factor = 1.07

Device Reference Point: 0.000, 0.000, -6.30 mm; Reference Value = 28.5 V/m; Power Drift = 0.121 dB

Hearing Aid Near-Field Category: **M4 (AWF 0 dB)**

Peak E-field in V/m

Grid 1 <b>25.8 M4</b>	Grid 2 <b>23.3 M4</b>	Grid 3 <b>22.7 M4</b>
Grid 4 <b>28.5 M4</b>	Grid 5 <b>29.2 M4</b>	Grid 6 <b>29.1 M4</b>
Grid 7 <b>33.6 M4</b>	Grid 8 <b>34.1 M4</b>	Grid 9 <b>32.4 M4</b>



Date/Time: 9/3/2008 4:15:46 PM

## Test Laboratory: Motorola - CDMA 1900 E-Field, Slider Retracted

Serial: 80684D51; FCC ID: IHDP56JX2

Procedure Notes: Pwr Step: All Up Bits; Antenna Position: Internal; Battery Model #:SNN5833A

Vocoder Rate: Full Rate; PMF Value: 1.07; Positioner: SPEAG Clamp

Communication System: CDMA 1900; Frequency: 1908.75 MHz; Channel Number: 1175; Duty Cycle: 1:1

Medium: Air; Medium parameters used:  $\sigma = 0$  mho/m,  $\epsilon_r = 1$ ;  $\rho = 0$  kg/m<sup>3</sup>

DASY4 Configuration:

- Probe: ER3DV6R - SN2245; ConvF(1, 1, 1); Calibrated: 11/20/2007
- Sensor-Surface: (Fix Surface)
- Electronics: DAE3 Sn440; Calibrated: 1/28/2008
- Phantom: R-3, HAC Test Arch (rev.2); Type: SD HAC P01 BA; Serial: 1071;
- Measurement SW: DASY4, V4.7 Build 71; Postprocessing SW: SEMCAD, V1.8 Build 184

### E Scan - Sensor center 15mm above WD, Hearing Aid Compatibility Test (101x101x1):

Measurement grid: dx=5mm, dy=5mm

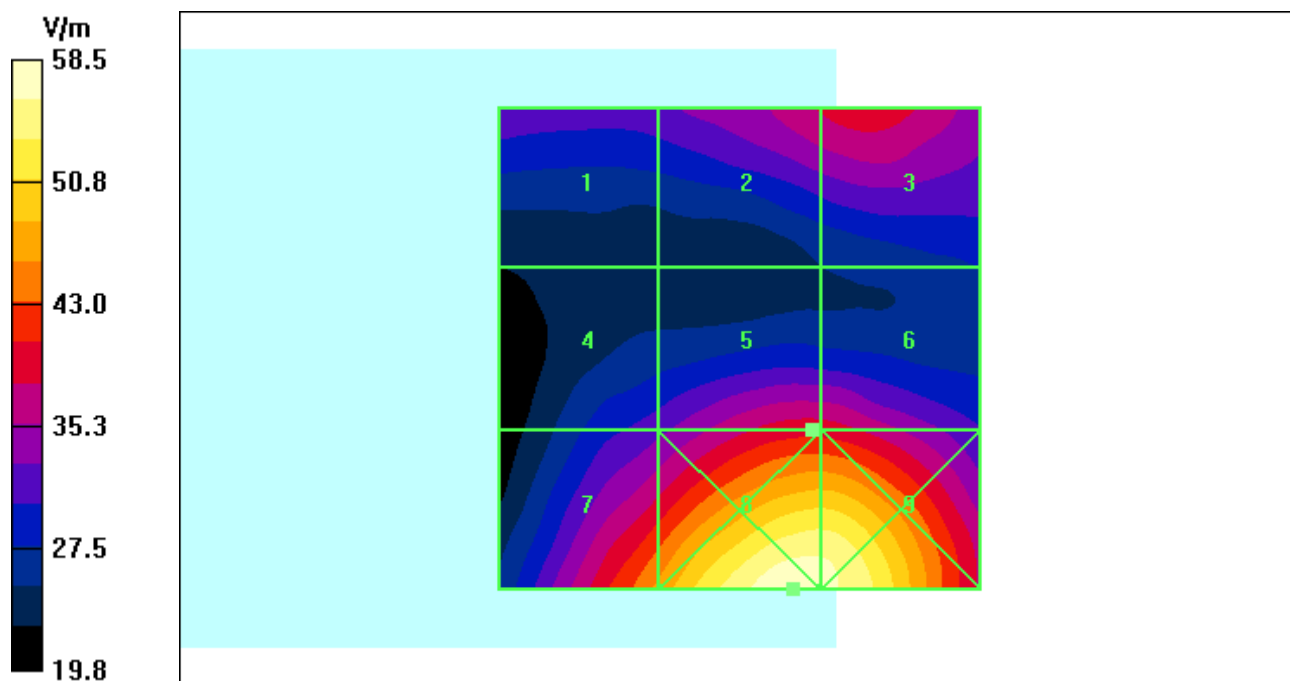
Maximum value of peak Total field = 46.3 V/m; Probe Modulation Factor = 1.07

Device Reference Point: 0.000, 0.000, -6.30 mm; Reference Value = 30.8 V/m; Power Drift = -0.023 dB

Hearing Aid Near-Field Category: **M4 (AWF 0 dB)**

Peak E-field in V/m

Grid 1 <b>32.3 M4</b>	Grid 2 <b>38.3 M4</b>	Grid 3 <b>39.3 M4</b>
Grid 4 <b>32.0 M4</b>	Grid 5 <b>39.7 M4</b>	Grid 6 <b>39.5 M4</b>
Grid 7 <b>46.3 M4</b>	Grid 8 <b>58.5 M4</b>	Grid 9 <b>57.1 M4</b>



Date/Time: 8/24/2008 1:47:18 PM

## Test Laboratory: Motorola - CDMA 1900 E-Field, Slider Extended

Serial: 80684D51; FCC ID: IHDP56JX2

Procedure Notes: Pwr Step: All Up Bits; Antenna Position: Internal; Battery Model #:SNN5833A

Vocoder Rate: 1/8 Rate; PMF Value: 2.89; Positioner: SPEAG Clamp

Communication System: CDMA 1900; Frequency: 1908.75 MHz; Channel Number: 1175; Duty Cycle: 1:8

Medium: Air; Medium parameters used:  $\sigma = 0$  mho/m,  $\epsilon_r = 1$ ;  $\rho = 0$  kg/m<sup>3</sup>

DASY4 Configuration:

- Probe: ER3DV6R - SN2245; ConvF(1, 1, 1); Calibrated: 11/20/2007
- Sensor-Surface: (Fix Surface)
- Electronics: DAE3 Sn440; Calibrated: 1/28/2008
- Phantom: R-3, HAC Test Arch (rev.2); Type: SD HAC P01 BA; Serial: 1071;
- Measurement SW: DASY4, V4.7 Build 71; Postprocessing SW: SEMCAD, V1.8 Build 184

### E Scan - Sensor center 15mm above WD, Hearing Aid Compatibility Test (101x101x1):

Measurement grid: dx=5mm, dy=5mm

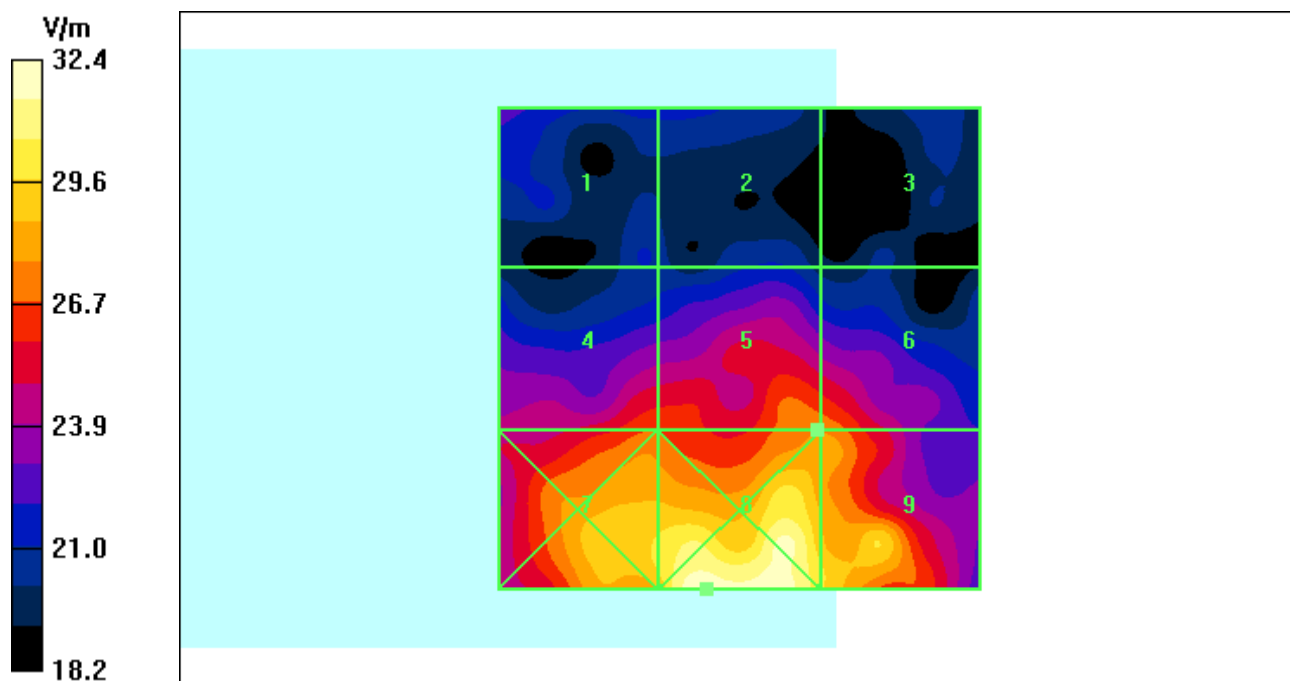
Maximum value of peak Total field = 29.8 V/m; Probe Modulation Factor = 2.89

Device Reference Point: 0.000, 0.000, -6.30 mm; Reference Value = 9.66 V/m; Power Drift = 0.011 dB

Hearing Aid Near-Field Category: **M4 (AWF 0 dB)**

Peak E-field in V/m

Grid 1 <b>22.4 M4</b>	Grid 2 <b>21.8 M4</b>	Grid 3 <b>20.6 M4</b>
Grid 4 <b>26.7 M4</b>	Grid 5 <b>27.6 M4</b>	Grid 6 <b>27.6 M4</b>
Grid 7 <b>29.8 M4</b>	Grid 8 <b>32.4 M4</b>	Grid 9 <b>29.8 M4</b>



Date/Time: 9/4/2008 3:43:40 PM

## Test Laboratory: Motorola - CDMA 1900 E-Field, Slider Retracted

Serial: 80684D51; FCC ID: IHDP56JX2

Procedure Notes: Pwr Step: All Up Bits; Antenna Position: Internal; Battery Model #:SNN5833A

Vocoder Rate: 1/8 Rate; PMF Value: 2.89; Positioner: SPEAG Clamp

Communication System: CDMA 1900; Frequency: 1908.75 MHz; Channel Number: 1175; Duty Cycle: 1:8

Medium: Air; Medium parameters used:  $\sigma = 0$  mho/m,  $\epsilon_r = 1$ ;  $\rho = 0$  kg/m<sup>3</sup>

DASY4 Configuration:

- Probe: ER3DV6R - SN2245; ConvF(1, 1, 1); Calibrated: 11/20/2007
- Sensor-Surface: (Fix Surface)
- Electronics: DAE3 Sn440; Calibrated: 1/28/2008
- Phantom: R-3, HAC Test Arch (rev.2); Type: SD HAC P01 BA; Serial: 1071;
- Measurement SW: DASY4, V4.7 Build 71; Postprocessing SW: SEMCAD, V1.8 Build 184

### E Scan - Sensor center 15mm above WD, Hearing Aid Compatibility Test (101x101x1):

Measurement grid: dx=5mm, dy=5mm

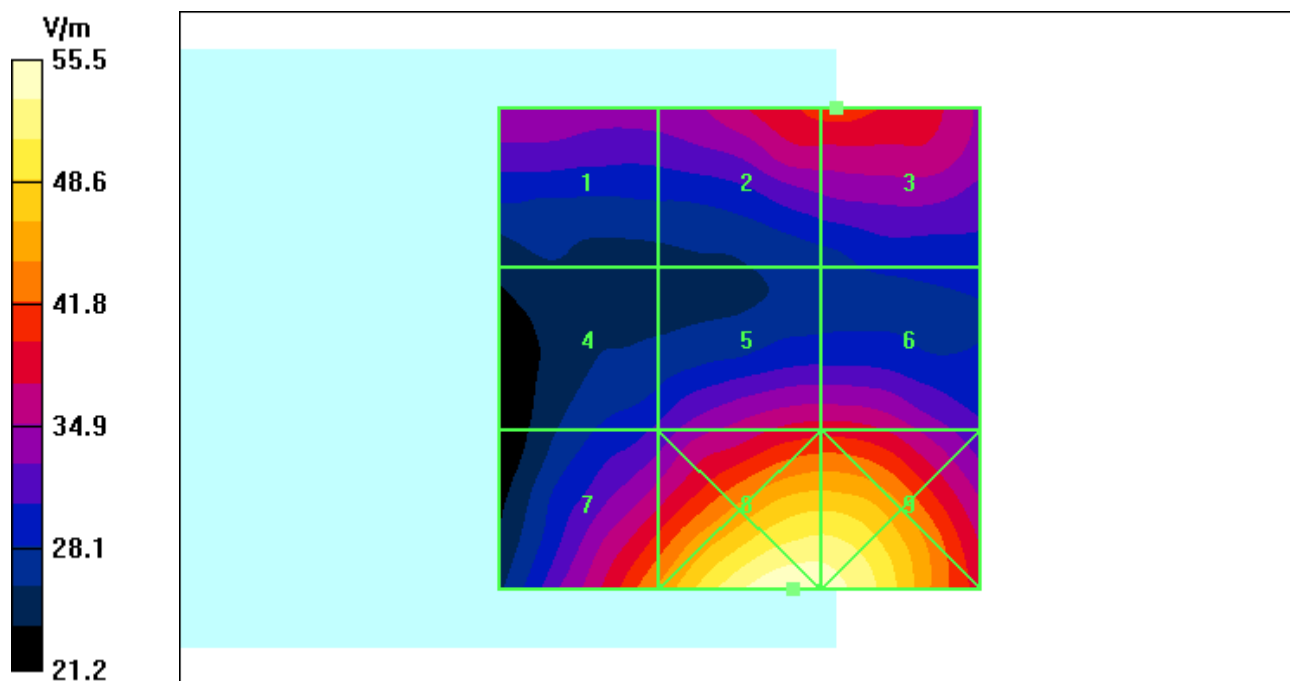
Maximum value of peak Total field = 44.5 V/m; Probe Modulation Factor = 2.89

Device Reference Point: 0.000, 0.000, -6.30 mm; Reference Value = 11.7 V/m; Power Drift = -0.004 dB

Hearing Aid Near-Field Category: **M4 (AWF 0 dB)**

Peak E-field in V/m

Grid 1 <b>35.0 M4</b>	Grid 2 <b>40.6 M4</b>	Grid 3 <b>40.9 M4</b>
Grid 4 <b>31.0 M4</b>	Grid 5 <b>38.7 M4</b>	Grid 6 <b>38.7 M4</b>
Grid 7 <b>44.5 M4</b>	Grid 8 <b>55.5 M4</b>	Grid 9 <b>54.7 M4</b>



Date/Time: 8/24/2008 5:37:52 PM

## Test Laboratory: Motorola - CDMA 800 H-Field, Slider Extended

Serial: 80684D51; FCC ID: IHDP56JX2

Procedure Notes: Pwr Step: All Up Bits; Antenna Position: Internal; Battery Model #:SNN5833A

Vocoder Rate: Full Rate; PMF Value: 1.03; Positioner: SPEAG Clamp

Communication System: CDMA 835; Frequency: 836.52 MHz; Channel Number: 384; Duty Cycle: 1:1

Medium: Air; Medium parameters used:  $\sigma = 0$  mho/m,  $\epsilon_r = 1$ ;  $\rho = 0$  kg/m<sup>3</sup>

DASY4 Configuration:

- Probe: H3DV6 - SN6075; ; Calibrated: 11/20/2007
- Sensor-Surface: (Fix Surface)
- Electronics: DAE4 Sn639; Calibrated: 11/13/2007
- Phantom: R-3, HAC Test Arch (rev.2); Type: SD HAC P01 BA; Serial: 1071;
- Measurement SW: DASY4, V4.7 Build 71; Postprocessing SW: SEMCAD, V1.8 Build 184

### H Scan - Sensor center 15mm above WD, Hearing Aid Compatibility Test (101x101x1):

Measurement grid: dx=5mm, dy=5mm

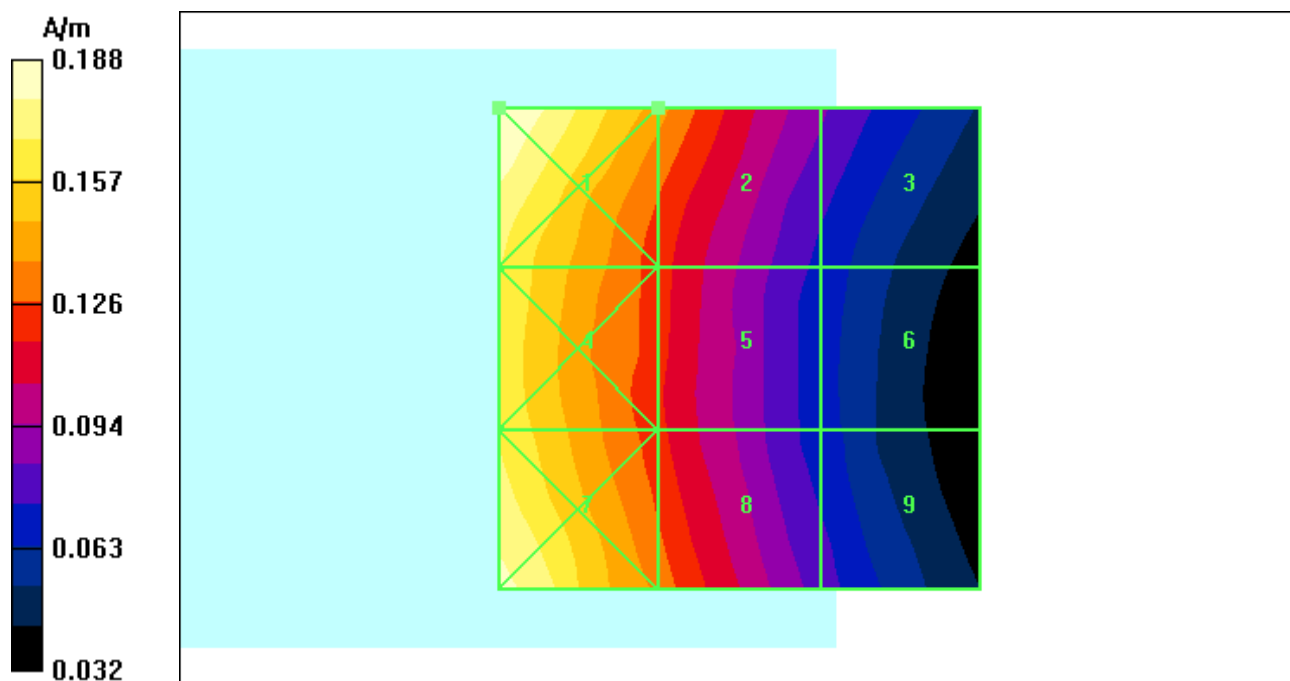
Maximum value of peak Total field = 0.141 A/m; Probe Modulation Factor = 1.03

Device Reference Point: 0.000, 0.000, -6.30 mm; Reference Value = 0.089 A/m; Power Drift = 0.073 dB

**Hearing Aid Near-Field Category: M4 (AWF 0 dB)**

Peak H-field in A/m

Grid 1 <b>0.188 M4</b>	Grid 2 <b>0.141 M4</b>	Grid 3 <b>0.086 M4</b>
Grid 4 <b>0.168 M4</b>	Grid 5 <b>0.120 M4</b>	Grid 6 <b>0.071 M4</b>
Grid 7 <b>0.181 M4</b>	Grid 8 <b>0.133 M4</b>	Grid 9 <b>0.079 M4</b>



Date/Time: 9/5/2008 9:11:50 AM

## Test Laboratory: Motorola - CDMA 800 H-Field, Slider Retracted

Serial: 80684D51; FCC ID: IHDP56JX2

Procedure Notes: Pwr Step: All Up Bits; Antenna Position: Internal; Battery Model #:SNN5833A

Vocoder Rate: Full Rate; PMF Value: 1.03; Positioner: SPEAG Clamp

Communication System: CDMA 835; Frequency: 836.52 MHz; Channel Number: 384; Duty Cycle: 1:1

Medium: Air; Medium parameters used:  $\sigma = 0$  mho/m,  $\epsilon_r = 1$ ;  $\rho = 0$  kg/m<sup>3</sup>

DASY4 Configuration:

- Probe: H3DV6 - SN6075; ; Calibrated: 11/20/2007
- Sensor-Surface: (Fix Surface)
- Electronics: DAE3 Sn437; Calibrated: 7/11/2008
- Phantom: R-3, HAC Test Arch (rev.2); Type: SD HAC P01 BA; Serial: 1071;
- Measurement SW: DASY4, V4.7 Build 71; Postprocessing SW: SEMCAD, V1.8 Build 184

### H Scan - Sensor center 15mm above WD, Hearing Aid Compatibility Test (101x101x1):

Measurement grid: dx=5mm, dy=5mm

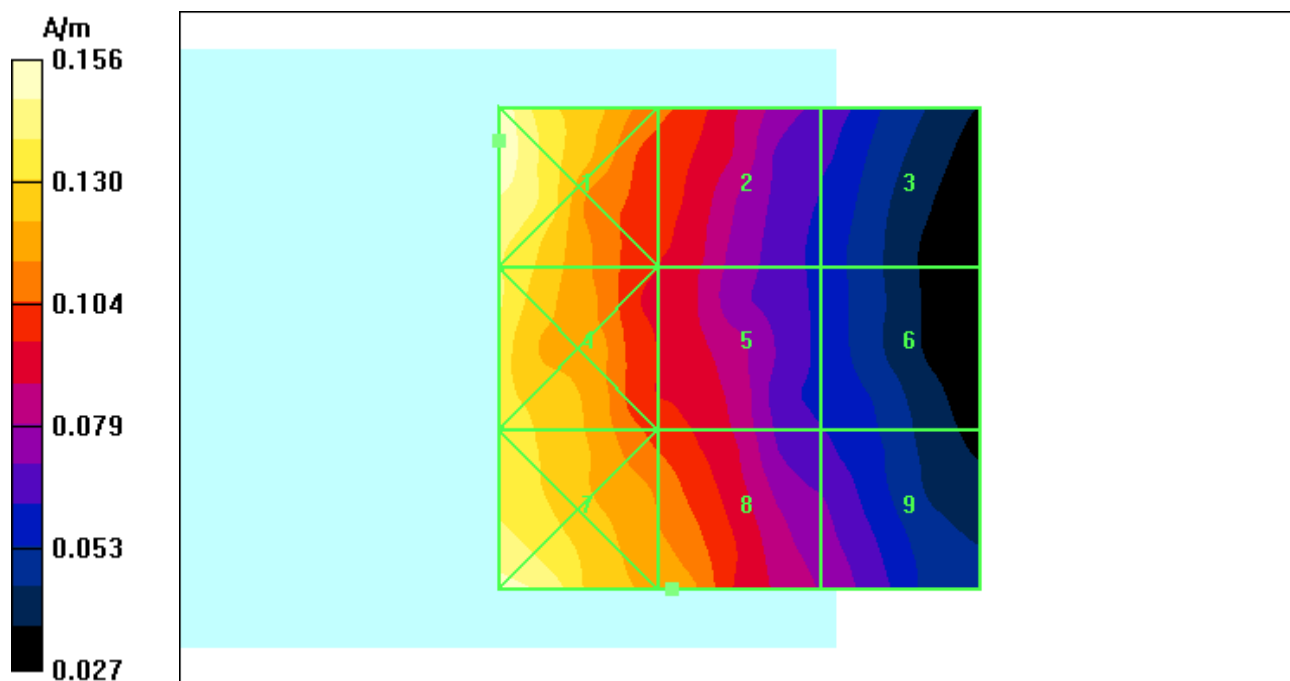
Maximum value of peak Total field = 0.119 A/m; Probe Modulation Factor = 1.03

Device Reference Point: 0.000, 0.000, -6.30 mm; Reference Value = 0.078 A/m; Power Drift = 0.092 dB

**Hearing Aid Near-Field Category: M4 (AWF 0 dB)**

Peak H-field in A/m

Grid 1 <b>0.156 M4</b>	Grid 2 <b>0.107 M4</b>	Grid 3 <b>0.069 M4</b>
Grid 4 <b>0.141 M4</b>	Grid 5 <b>0.101 M4</b>	Grid 6 <b>0.062 M4</b>
Grid 7 <b>0.152 M4</b>	Grid 8 <b>0.119 M4</b>	Grid 9 <b>0.078 M4</b>



Date/Time: 8/24/2008 6:01:55 PM

## Test Laboratory: Motorola - CDMA 800 H-Field, Slider Extended

Serial: 80684D51; FCC ID: IHDP56JX2

Procedure Notes: Pwr Step: All Up Bits; Antenna Position: Internal; Battery Model #:SNN5833A

Vocoder Rate: 1/8 Rate; PMF Value: 2.54; Positioner: SPEAG Clamp

Communication System: CDMA 835; Frequency: 848.31 MHz; Channel Number: 777; Duty Cycle: 1:8

Medium: Air; Medium parameters used:  $\sigma = 0$  mho/m,  $\epsilon_r = 1$ ;  $\rho = 0$  kg/m<sup>3</sup>

DASY4 Configuration:

- Probe: H3DV6 - SN6075; ; Calibrated: 11/20/2007
- Sensor-Surface: (Fix Surface)
- Electronics: DAE4 Sn639; Calibrated: 11/13/2007
- Phantom: R-3, HAC Test Arch (rev.2); Type: SD HAC P01 BA; Serial: 1071;
- Measurement SW: DASY4, V4.7 Build 71; Postprocessing SW: SEMCAD, V1.8 Build 184

### H Scan - Sensor center 15mm above WD, Hearing Aid Compatibility Test (101x101x1):

Measurement grid: dx=5mm, dy=5mm

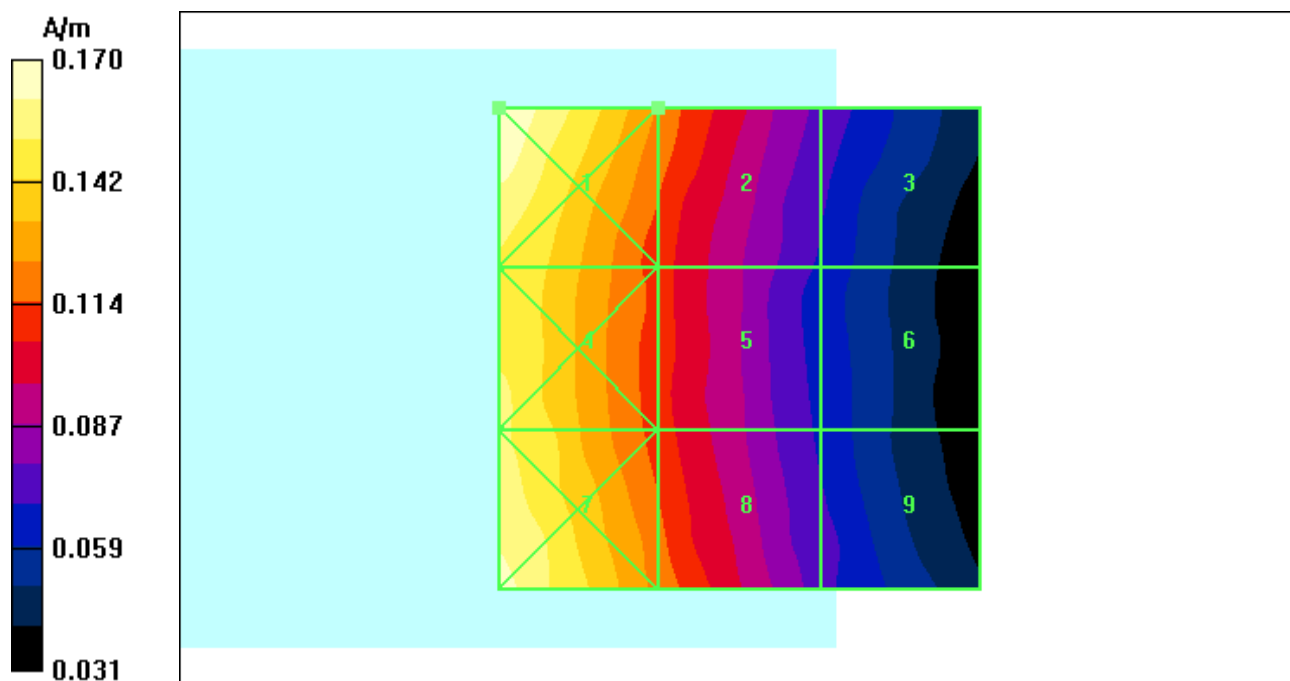
Maximum value of peak Total field = 0.123 A/m; Probe Modulation Factor = 2.54

Device Reference Point: 0.000, 0.000, -6.30 mm; Reference Value = 0.034 A/m; Power Drift = -0.083 dB

**Hearing Aid Near-Field Category: M4 (AWF 0 dB)**

Peak H-field in A/m

Grid 1 <b>0.170 M4</b>	Grid 2 <b>0.123 M4</b>	Grid 3 <b>0.075 M4</b>
Grid 4 <b>0.155 M4</b>	Grid 5 <b>0.111 M4</b>	Grid 6 <b>0.067 M4</b>
Grid 7 <b>0.166 M4</b>	Grid 8 <b>0.121 M4</b>	Grid 9 <b>0.073 M4</b>



Date/Time: 9/5/2008 9:52:21 AM

## Test Laboratory: Motorola - CDMA 800 H-Field, Slider Retracted

Serial: 80684D51; FCC ID: IHDP56JX2

Procedure Notes: Pwr Step: All Up Bits; Antenna Position: Internal; Battery Model #:SNN5833A

Vocoder Rate: 1/8 Rate; PMF Value: 2.54; Positioner: SPEAG Clamp

Communication System: CDMA 835; Frequency: 836.52 MHz; Channel Number: 384; Duty Cycle: 1:8

Medium: Air; Medium parameters used:  $\sigma = 0$  mho/m,  $\epsilon_r = 1$ ;  $\rho = 0$  kg/m<sup>3</sup>

DASY4 Configuration:

- Probe: H3DV6 - SN6075; ; Calibrated: 11/20/2007
- Sensor-Surface: (Fix Surface)
- Electronics: DAE3 Sn437; Calibrated: 7/11/2008
- Phantom: R-3, HAC Test Arch (rev.2); Type: SD HAC P01 BA; Serial: 1071;
- Measurement SW: DASY4, V4.7 Build 71; Postprocessing SW: SEMCAD, V1.8 Build 184

### H Scan - Sensor center 15mm above WD, Hearing Aid Compatibility Test (101x101x1):

Measurement grid: dx=5mm, dy=5mm

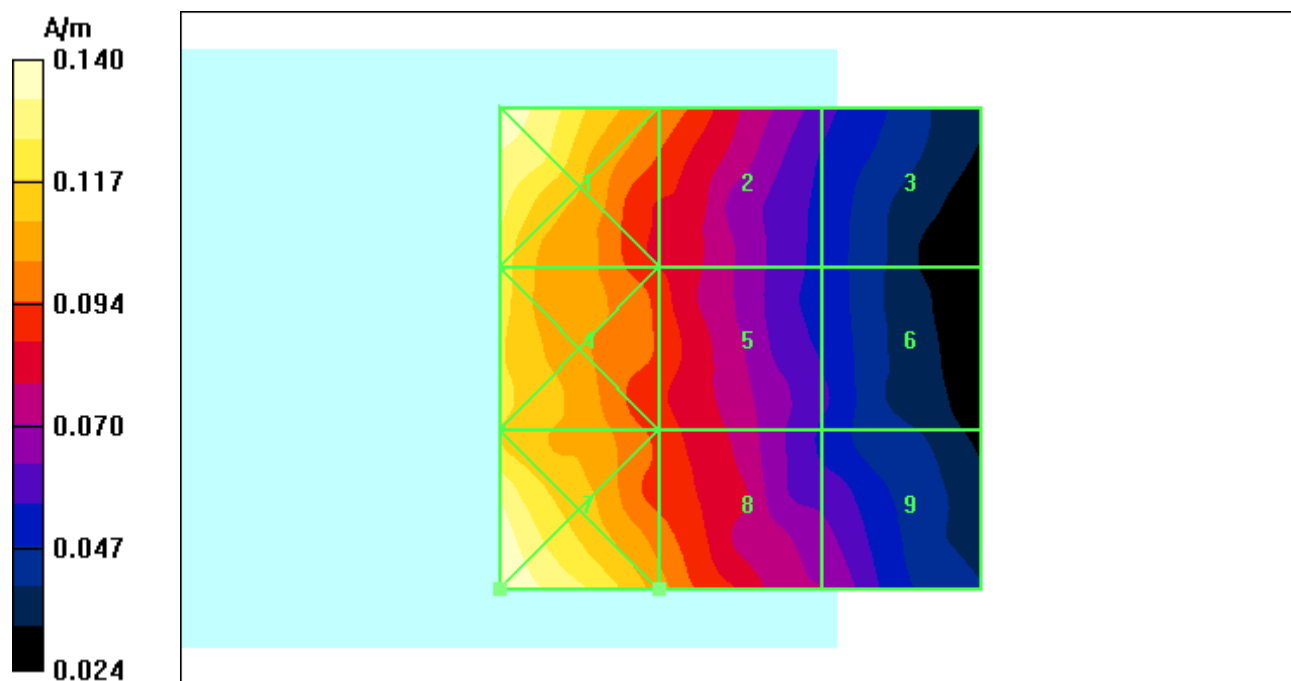
Maximum value of peak Total field = 0.106 A/m; Probe Modulation Factor = 2.54

Device Reference Point: 0.000, 0.000, -6.30 mm; Reference Value = 0.029 A/m; Power Drift = -0.218 dB

**Hearing Aid Near-Field Category: M4 (AWF 0 dB)**

Peak H-field in A/m

Grid 1 <b>0.138 M4</b>	Grid 2 <b>0.101 M4</b>	Grid 3 <b>0.059 M4</b>
Grid 4 <b>0.122 M4</b>	Grid 5 <b>0.092 M4</b>	Grid 6 <b>0.057 M4</b>
Grid 7 <b>0.140 M4</b>	Grid 8 <b>0.106 M4</b>	Grid 9 <b>0.071 M4</b>



Date/Time: 8/22/2008 11:06:13 AM

## Test Laboratory: Motorola - CDMA 1700 H-Field, Slider Extended

Serial: 80684D51; FCC ID: IHDP56JX2

Procedure Notes: Pwr Step: All Up Bits; Antenna Position: Internal; Battery Model #:SNN5833A

Vocoder Rate: Full Rate; PMF Value: 1.01; Positioner: SPEAG Clamp

Communication System: CDMA 1700; Frequency: 1753.75 MHz; Channel Number: 875; Duty Cycle: 1:1

Medium: Air; Medium parameters used:  $\sigma = 0$  mho/m,  $\epsilon_r = 1$ ;  $\rho = 0$  kg/m<sup>3</sup>

DASY4 Configuration:

- Probe: H3DV6 - SN6075; ; Calibrated: 11/20/2007
- Sensor-Surface: (Fix Surface)
- Electronics: DAE4 Sn639; Calibrated: 11/13/2007
- Phantom: R-3, HAC Test Arch (rev.2); Type: SD HAC P01 BA; Serial: 1071;
- Measurement SW: DASY4, V4.7 Build 71; Postprocessing SW: SEMCAD, V1.8 Build 184

### H Scan - Sensor center 15mm above WD, Hearing Aid Compatibility Test (101x101x1):

Measurement grid: dx=5mm, dy=5mm

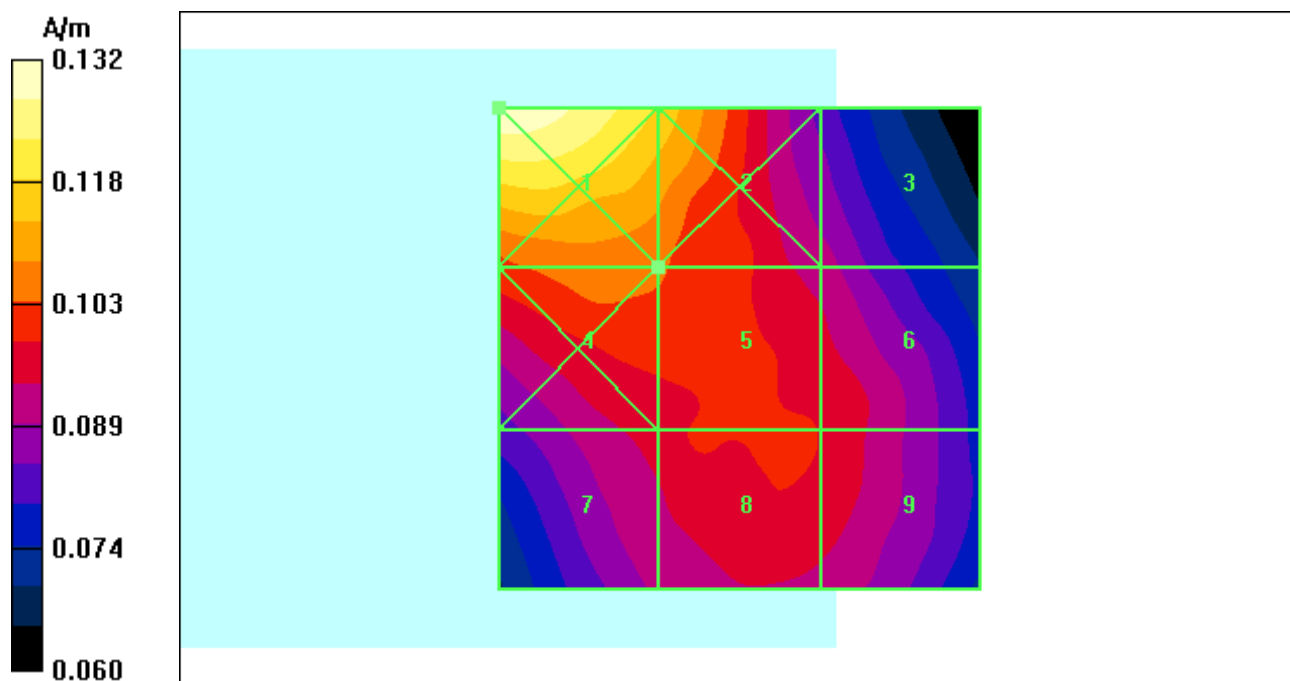
Maximum value of peak Total field = 0.104 A/m; Probe Modulation Factor = 1.01

Device Reference Point: 0.000, 0.000, -6.30 mm; Reference Value = 0.105 A/m; Power Drift = -0.036 dB

**Hearing Aid Near-Field Category: M4 (AWF 0 dB)**

Peak H-field in A/m

Grid 1 <b>0.132 M4</b>	Grid 2 <b>0.117 M4</b>	Grid 3 <b>0.091 M4</b>
Grid 4 <b>0.106 M4</b>	Grid 5 <b>0.104 M4</b>	Grid 6 <b>0.098 M4</b>
Grid 7 <b>0.096 M4</b>	Grid 8 <b>0.100 M4</b>	Grid 9 <b>0.098 M4</b>



Date/Time: 9/4/2008 2:30:14 PM

## Test Laboratory: Motorola - CDMA 1700 H-Field, Slider Retracted

Serial: 80684D51; FCC ID: IHDP56JX2

Procedure Notes: Pwr Step: All Up Bits; Antenna Position: Internal; Battery Model #:SNN5833A

Vocoder Rate: Full Rate; PMF Value: 1.01; Positioner: SPEAG Clamp

Communication System: CDMA 1700; Frequency: 1711.25 MHz; Channel Number: 25; Duty Cycle: 1:1

Medium: Air; Medium parameters used:  $\sigma = 0$  mho/m,  $\epsilon_r = 1$ ;  $\rho = 0$  kg/m<sup>3</sup>

DASY4 Configuration:

- Probe: H3DV6 - SN6075; ; Calibrated: 11/20/2007
- Sensor-Surface: (Fix Surface)
- Electronics: DAE3 Sn437; Calibrated: 7/11/2008
- Phantom: R-3, HAC Test Arch (rev.2); Type: SD HAC P01 BA; Serial: 1071;
- Measurement SW: DASY4, V4.7 Build 71; Postprocessing SW: SEMCAD, V1.8 Build 184

### H Scan - Sensor center 15mm above WD, Hearing Aid Compatibility Test (101x101x1):

Measurement grid: dx=5mm, dy=5mm

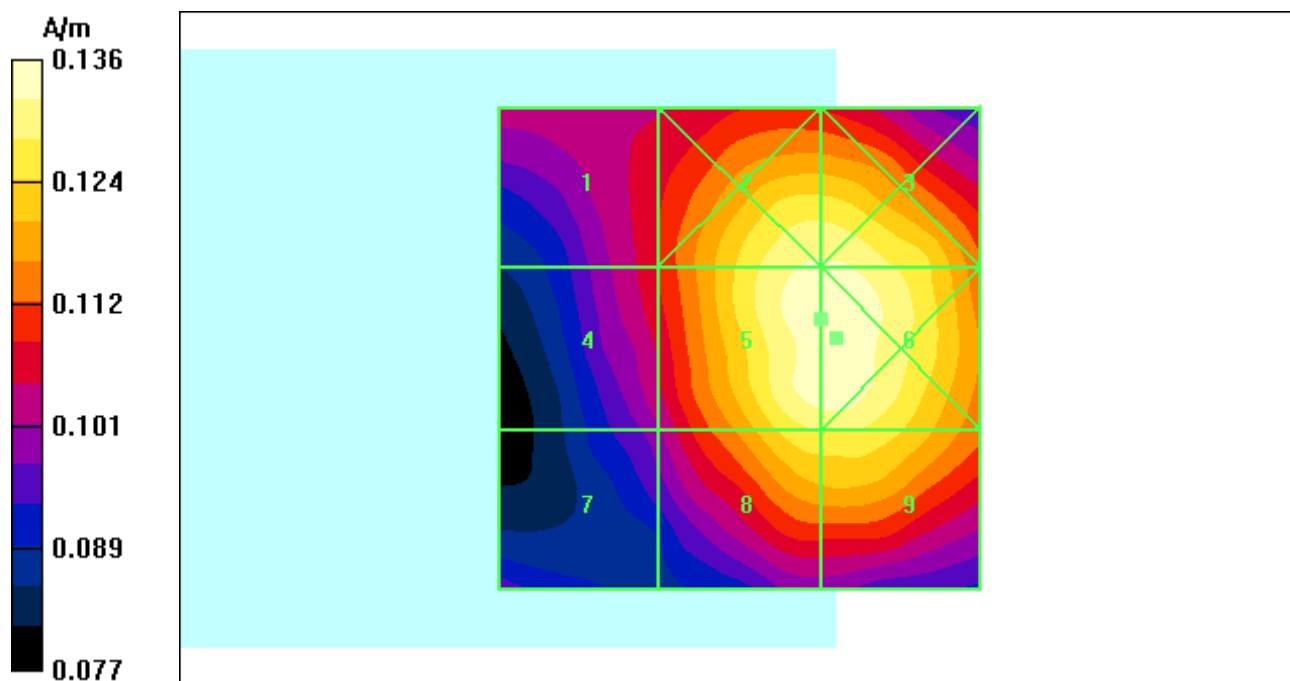
Maximum value of peak Total field = 0.136 A/m; Probe Modulation Factor = 1.01

Device Reference Point: 0.000, 0.000, -6.30 mm; Reference Value = 0.139 A/m; Power Drift = -0.010 dB

**Hearing Aid Near-Field Category: M4 (AWF 0 dB)**

Peak H-field in A/m

Grid 1 <b>0.109 M4</b>	Grid 2 <b>0.133 M4</b>	Grid 3 <b>0.133 M4</b>
Grid 4 <b>0.109 M4</b>	Grid 5 <b>0.136 M4</b>	Grid 6 <b>0.136 M4</b>
Grid 7 <b>0.100 M4</b>	Grid 8 <b>0.128 M4</b>	Grid 9 <b>0.128 M4</b>



Date/Time: 8/22/2008 11:35:21 AM

## Test Laboratory: Motorola - CDMA 1700 H-Field, Slider Extended

Serial: 80684D51; FCC ID: IHDP56JX2

Procedure Notes: Pwr Step: All Up Bits; Antenna Position: Internal; Battery Model #:SNN5833A

Vocoder Rate: 1/8 Rate; PMF Value: 2.55; Positioner: SPEAG Clamp

Communication System: CDMA 1700; Frequency: 1753.75 MHz; Channel Number: 875; Duty Cycle: 1:8

Medium: Air; Medium parameters used:  $\sigma = 0$  mho/m,  $\epsilon_r = 1$ ;  $\rho = 0$  kg/m<sup>3</sup>

DASY4 Configuration:

- Probe: H3DV6 - SN6075; ; Calibrated: 11/20/2007
- Sensor-Surface: (Fix Surface)
- Electronics: DAE4 Sn639; Calibrated: 11/13/2007
- Phantom: R-3, HAC Test Arch (rev.2); Type: SD HAC P01 BA; Serial: 1071;
- Measurement SW: DASY4, V4.7 Build 71; Postprocessing SW: SEMCAD, V1.8 Build 184

### H Scan - Sensor center 15mm above WD, Hearing Aid Compatibility Test (101x101x1):

Measurement grid: dx=5mm, dy=5mm

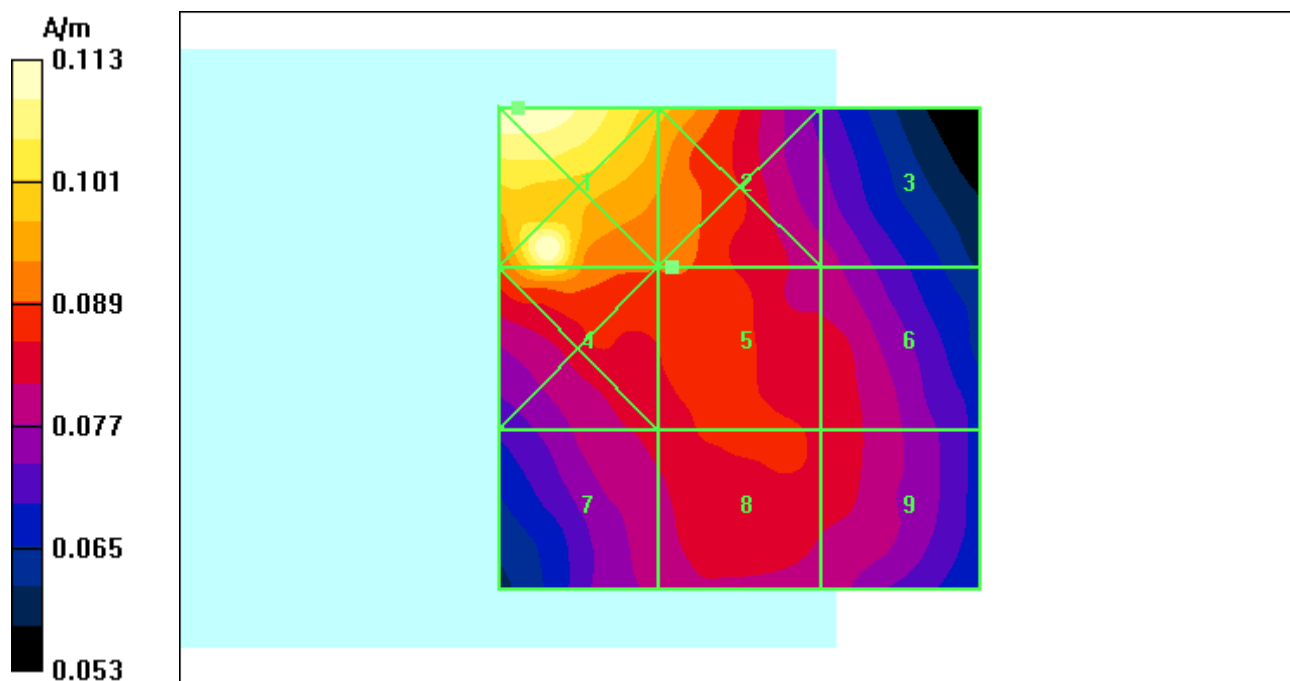
Maximum value of peak Total field = 0.089 A/m; Probe Modulation Factor = 2.55

Device Reference Point: 0.000, 0.000, -6.30 mm; Reference Value = 0.036 A/m; Power Drift = 0.159 dB

**Hearing Aid Near-Field Category: M4 (AWF 0 dB)**

Peak H-field in A/m

Grid 1 <b>0.113 M4</b>	Grid 2 <b>0.099 M4</b>	Grid 3 <b>0.079 M4</b>
Grid 4 <b>0.104 M4</b>	Grid 5 <b>0.089 M4</b>	Grid 6 <b>0.084 M4</b>
Grid 7 <b>0.083 M4</b>	Grid 8 <b>0.086 M4</b>	Grid 9 <b>0.084 M4</b>



Date/Time: 9/4/2008 2:04:35 PM

## Test Laboratory: Motorola - CDMA 1700 H-Field, Slider Retracted

Serial: 80684D51; FCC ID: IHDP56JX2

Procedure Notes: Pwr Step: All Up Bits; Antenna Position: Internal; Battery Model #:SNN5833A

Vocoder Rate: 1/8 Rate; PMF Value: 2.55; Positioner: SPEAG Clamp

Communication System: CDMA 1700; Frequency: 1711.25 MHz; Channel Number: 25; Duty Cycle: 1:8

Medium: Air; Medium parameters used:  $\sigma = 0$  mho/m,  $\epsilon_r = 1$ ;  $\rho = 0$  kg/m<sup>3</sup>

DASY4 Configuration:

- Probe: H3DV6 - SN6075; ; Calibrated: 11/20/2007
- Sensor-Surface: (Fix Surface)
- Electronics: DAE3 Sn437; Calibrated: 7/11/2008
- Phantom: R-3, HAC Test Arch (rev.2); Type: SD HAC P01 BA; Serial: 1071;
- Measurement SW: DASY4, V4.7 Build 71; Postprocessing SW: SEMCAD, V1.8 Build 184

### H Scan - Sensor center 15mm above WD, Hearing Aid Compatibility Test (101x101x1):

Measurement grid: dx=5mm, dy=5mm

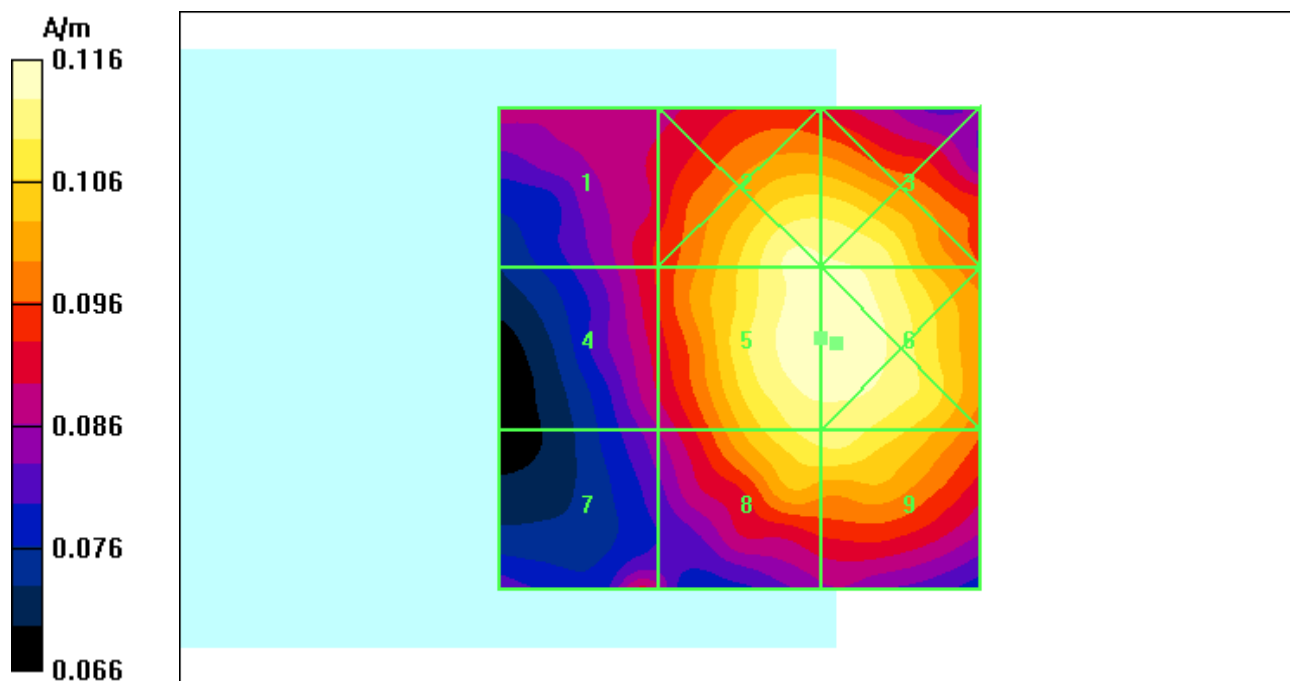
Maximum value of peak Total field = 0.116 A/m; Probe Modulation Factor = 2.55

Device Reference Point: 0.000, 0.000, -6.30 mm; Reference Value = 0.047 A/m; Power Drift = 0.083 dB

**Hearing Aid Near-Field Category: M4 (AWF 0 dB)**

Peak H-field in A/m

Grid 1 <b>0.093 M4</b>	Grid 2 <b>0.114 M4</b>	Grid 3 <b>0.114 M4</b>
Grid 4 <b>0.093 M4</b>	Grid 5 <b>0.116 M4</b>	Grid 6 <b>0.116 M4</b>
Grid 7 <b>0.091 M4</b>	Grid 8 <b>0.111 M4</b>	Grid 9 <b>0.111 M4</b>



Date/Time: 8/24/2008 7:46:09 PM

## Test Laboratory: Motorola - CDMA 1900 H-Field, Slider Extended

Serial: 80684D51; FCC ID: IHDP56JX2

Procedure Notes: Pwr Step: All Up Bits; Antenna Position: Internal; Battery Model #:SNN5833A

Vocoder Rate: Full Rate; PMF Value: 1.01; Positioner: SPEAG Clamp

Communication System: CDMA 1900; Frequency: 1908.75 MHz; Channel Number: 1175; Duty Cycle: 1:1

Medium: Air; Medium parameters used:  $\sigma = 0$  mho/m,  $\epsilon_r = 1$ ;  $\rho = 0$  kg/m<sup>3</sup>

DASY4 Configuration:

- Probe: H3DV6 - SN6075; ; Calibrated: 11/20/2007
- Sensor-Surface: (Fix Surface)
- Electronics: DAE4 Sn639; Calibrated: 11/13/2007
- Phantom: R-3, HAC Test Arch (rev.2); Type: SD HAC P01 BA; Serial: 1071;
- Measurement SW: DASY4, V4.7 Build 71; Postprocessing SW: SEMCAD, V1.8 Build 184

### H Scan - Sensor center 15mm above WD, Hearing Aid Compatibility Test (101x101x1):

Measurement grid: dx=5mm, dy=5mm

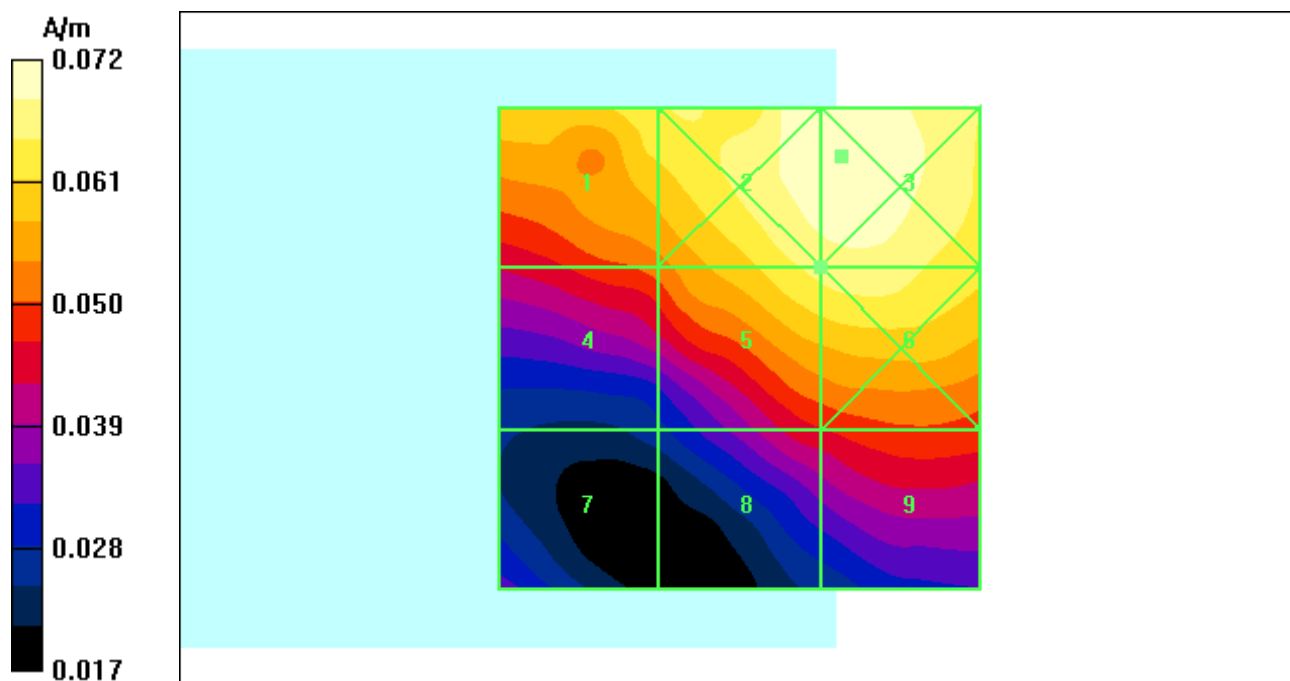
Maximum value of peak Total field = 0.066 A/m; Probe Modulation Factor = 1.01

Device Reference Point: 0.000, 0.000, -6.30 mm; Reference Value = 0.054 A/m; Power Drift = 0.046 dB

**Hearing Aid Near-Field Category: M4 (AWF 0 dB)**

Peak H-field in A/m

Grid 1 <b>0.064 M4</b>	Grid 2 <b>0.071 M4</b>	Grid 3 <b>0.072 M4</b>
Grid 4 <b>0.052 M4</b>	Grid 5 <b>0.066 M4</b>	Grid 6 <b>0.067 M4</b>
Grid 7 <b>0.034 M4</b>	Grid 8 <b>0.046 M4</b>	Grid 9 <b>0.050 M4</b>



Date/Time: 9/5/2008 10:52:29 AM

## Test Laboratory: Motorola - CDMA 1900 H-Field, Slider Retracted

Serial: 80684D51; FCC ID: IHDP56JX2

Procedure Notes: Pwr Step: All Up Bits; Antenna Position: Internal; Battery Model #:SNN5833A

Vocoder Rate: Full Rate; PMF Value: 1.01; Positioner: SPEAG Clamp

Communication System: CDMA 1900; Frequency: 1908.75 MHz; Channel Number: 1175; Duty Cycle: 1:1

Medium: Air; Medium parameters used:  $\sigma = 0$  mho/m,  $\epsilon_r = 1$ ;  $\rho = 0$  kg/m<sup>3</sup>

DASY4 Configuration:

- Probe: H3DV6 - SN6075; ; Calibrated: 11/20/2007
- Sensor-Surface: (Fix Surface)
- Electronics: DAE3 Sn437; Calibrated: 7/11/2008
- Phantom: R-3, HAC Test Arch (rev.2); Type: SD HAC P01 BA; Serial: 1071;
- Measurement SW: DASY4, V4.7 Build 71; Postprocessing SW: SEMCAD, V1.8 Build 184

### H Scan - Sensor center 15mm above WD, Hearing Aid Compatibility Test (101x101x1):

Measurement grid: dx=5mm, dy=5mm

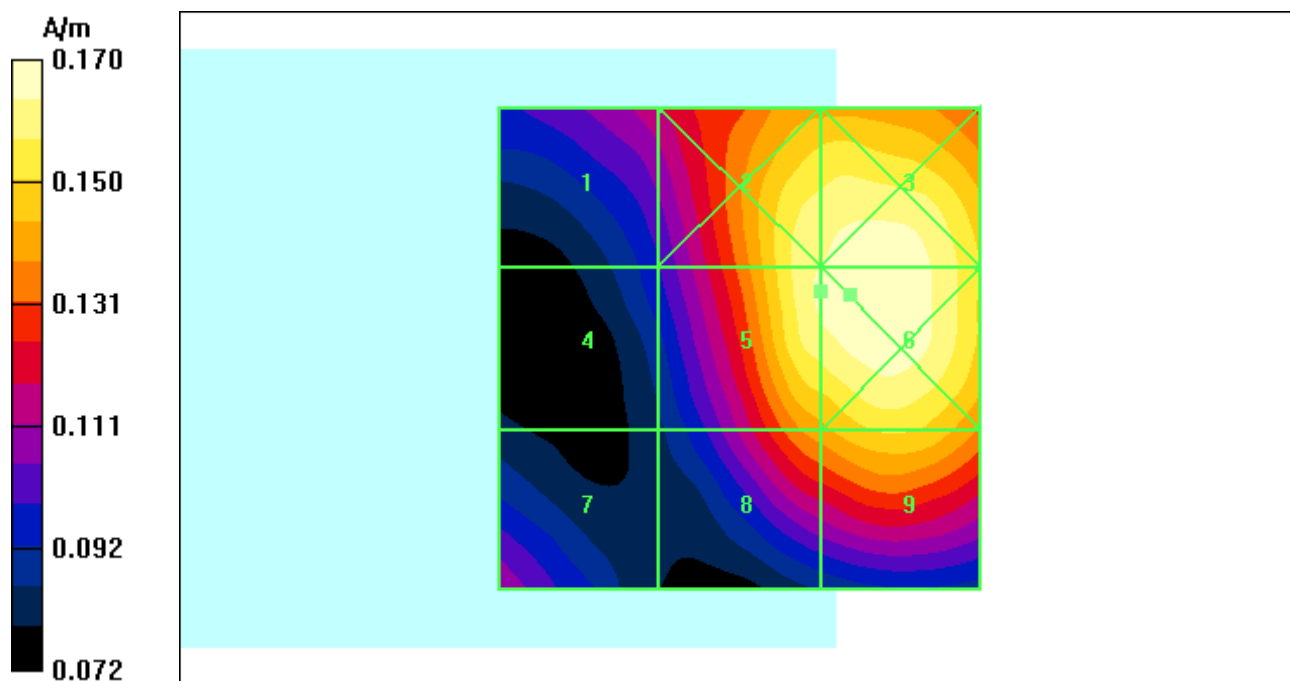
Maximum value of peak Total field = 0.165 A/m; Probe Modulation Factor = 1.01

Device Reference Point: 0.000, 0.000, -6.30 mm; Reference Value = 0.155 A/m; Power Drift = -0.047 dB

**Hearing Aid Near-Field Category: M4 (AWF 0 dB)**

Peak H-field in A/m

Grid 1 <b>0.116 M4</b>	Grid 2 <b>0.164 M4</b>	Grid 3 <b>0.170 M4</b>
Grid 4 <b>0.098 M4</b>	Grid 5 <b>0.165 M4</b>	Grid 6 <b>0.170 M4</b>
Grid 7 <b>0.110 M4</b>	Grid 8 <b>0.142 M4</b>	Grid 9 <b>0.151 M4</b>



Date/Time: 8/24/2008 10:31:50 PM

## Test Laboratory: Motorola - CDMA 1900 H-Field, Slider Extended

Serial: 80684D51; FCC ID: IHDP56JX2

Procedure Notes: Pwr Step: All Up Bits; Antenna Position: Internal; Battery Model #:SNN5833A

Vocoder Rate: 1/8 Rate; PMF Value: 2.54; Positioner: SPEAG Clamp

Communication System: CDMA 1900; Frequency: 1908.75 MHz; Channel Number: 1175; Duty Cycle: 1:8

Medium: Air; Medium parameters used:  $\sigma = 0$  mho/m,  $\epsilon_r = 1$ ;  $\rho = 0$  kg/m<sup>3</sup>

DASY4 Configuration:

- Probe: H3DV6 - SN6075; ; Calibrated: 11/20/2007
- Sensor-Surface: (Fix Surface)
- Electronics: DAE4 Sn639; Calibrated: 11/13/2007
- Phantom: R-3, HAC Test Arch (rev.2); Type: SD HAC P01 BA; Serial: 1071;
- Measurement SW: DASY4, V4.7 Build 71; Postprocessing SW: SEMCAD, V1.8 Build 184

### H Scan - Sensor center 15mm above WD, Hearing Aid Compatibility Test (101x101x1):

Measurement grid: dx=5mm, dy=5mm

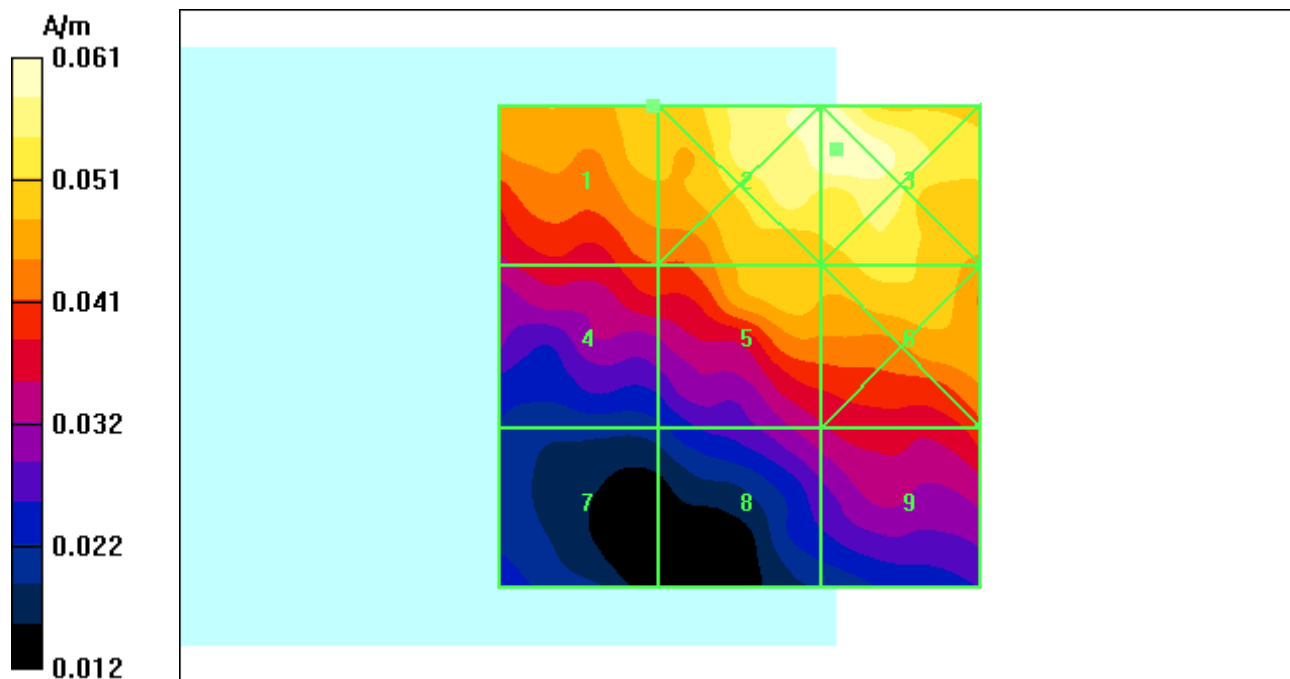
Maximum value of peak Total field = 0.051 A/m; Probe Modulation Factor = 2.54

Device Reference Point: 0.000, 0.000, -6.30 mm; Reference Value = 0.017 A/m; Power Drift = 0.110 dB

**Hearing Aid Near-Field Category: M4 (AWF 0 dB)**

Peak H-field in A/m

Grid 1 <b>0.051 M4</b>	Grid 2 <b>0.060 M4</b>	Grid 3 <b>0.061 M4</b>
Grid 4 <b>0.041 M4</b>	Grid 5 <b>0.051 M4</b>	Grid 6 <b>0.053 M4</b>
Grid 7 <b>0.025 M4</b>	Grid 8 <b>0.034 M4</b>	Grid 9 <b>0.040 M4</b>



Date/Time: 9/5/2008 10:30:10 AM

## Test Laboratory: Motorola - CDMA 1900 H-Field, Slider Retracted

Serial: 80684D51; FCC ID: IHDP56JX2

Procedure Notes: Pwr Step: All Up Bits; Antenna Position: Internal; Battery Model #:SNN5833A

Vocoder Rate: 1/8 Rate; PMF Value: 2.54; Positioner: SPEAG Clamp

Communication System: CDMA 1900; Frequency: 1908.75 MHz; Channel Number: 1175; Duty Cycle: 1:8

Medium: Air; Medium parameters used:  $\sigma = 0$  mho/m,  $\epsilon_r = 1$ ;  $\rho = 0$  kg/m<sup>3</sup>

DASY4 Configuration:

- Probe: H3DV6 - SN6075; ; Calibrated: 11/20/2007
- Sensor-Surface: (Fix Surface)
- Electronics: DAE3 Sn437; Calibrated: 7/11/2008
- Phantom: R-3, HAC Test Arch (rev.2); Type: SD HAC P01 BA; Serial: 1071;
- Measurement SW: DASY4, V4.7 Build 71; Postprocessing SW: SEMCAD, V1.8 Build 184

### H Scan - Sensor center 15mm above WD, Hearing Aid Compatibility Test (101x101x1):

Measurement grid: dx=5mm, dy=5mm

Maximum value of peak Total field = 0.148 A/m; Probe Modulation Factor = 2.54

Device Reference Point: 0.000, 0.000, -6.30 mm; Reference Value = 0.057 A/m; Power Drift = -0.188 dB

**Hearing Aid Near-Field Category: M4 (AWF 0 dB)**

Peak H-field in A/m

Grid 1 <b>0.102 M4</b>	Grid 2 <b>0.146 M4</b>	Grid 3 <b>0.155 M4</b>
Grid 4 <b>0.087 M4</b>	Grid 5 <b>0.148 M4</b>	Grid 6 <b>0.158 M4</b>
Grid 7 <b>0.101 M4</b>	Grid 8 <b>0.131 M4</b>	Grid 9 <b>0.141 M4</b>

