



**MOTOROLA**

**Portable Cellular Phone SAR Test Report**

**Test Report #:** 22279-2F  
**Date of Report:** 12-Sep-2008  
**Date of Test:** 03-Sep-2008 ~ 09-Sep-2008  
**FCC ID #:** **IHDP56JM2**  
**Generic Name:** **VE465**  
**Laboratory:** Motorola Mobile Devices Business Product Safety & Compliance Laboratory  
11th Floor, Hibrand Living Hall,  
215, Yanjae-Dong, Seocho-Gu, Seoul, South Korea, 137-130

**Report Author:** Brian Lee  
RF Engineer  
*Brian Lee*

This laboratory is accredited to ISO/IEC 17025-2005 to perform the following tests:

<u>Tests:</u>	<u>Procedures:</u>
Electromagnetic Specific Absorption Rate	IEC 62209-1
	RSS-102
	IEEE 1528 - 2003
	FCC OET Bulletin 65 ( <i>including Supplement C</i> )
	Australian Communications Authority Radio
	Communications (Electromagnetic Radiation – Human
	Exposure) Standard 2003
	CENELEC EN 50360 (2001)
	CENELEC EN 50361 (2001)
	ARIB Std. T-56 (2002)

**Accreditation:**



TESTING CERT #2518-03

On the following products or types of products:

On the following products or types of products: Wireless Communications Devices (Examples): Two Way Radios; Portable Phones (including Cellular, Licensed Non-Broadcast and PCS); Low Frequency Readers; and Pagers

**Statement of Compliance:**

Motorola declares under its sole responsibility that the portable cellular telephone model to which this declaration relates, is in conformity with the appropriate General Population/Uncontrolled RF exposure standards, recommendations and guidelines (FCC 47 CFR §2.1093) as well as with CENELEC en50360:2001 and ANSI / IEEE C95.1. It also declares that the product was tested in accordance with IEEE 1528 / CENELEC EN62209-1 (2006), as well as other appropriate measurement standards, guidelines and recommended practices. Any deviations from these standards, guidelines and recommended practices are noted below:

(none)

©Motorola, Inc. 2008

This test report shall not be reproduced except in full, without written approval of the laboratory.

The results and statements contained herein relate only to the items tested. The names of individuals involved may be mentioned only in connection with the statements or results from this report.

Motorola encourages all feedback, both positive and negative, on this test report.

## Table of Contents

<b>1. Introduction</b>	<b>2</b>
<b>2. Description of the Device Under Test</b>	<b>2</b>
<i>2.1 Antenna description</i>	2
<i>2.2 Device description</i>	2
<b>3. Test Equipment Used</b>	<b>3</b>
<i>3.1 Dosimetric System</i>	3
<i>3.2 Additional Equipment</i>	3
<b>4. Electrical parameters of the tissue simulating liquid</b>	<b>4</b>
<b>5. System Accuracy Verification</b>	<b>5</b>
<b>6. Test Results</b>	<b>6</b>
<i>6.1 Head Adjacent Test Results</i>	7
<i>6.2 Body Worn Test Results</i>	12
<b>References</b>	<b>16</b>
<b>Appendix 1: SAR distribution comparison for system accuracy verification</b>	<b>17</b>
<b>Appendix 2: SAR distribution plots for Phantom Head Adjacent Use</b>	<b>18</b>
<b>Appendix 3: SAR distribution plots for Body Worn Configuration</b>	<b>19</b>
<b>Appendix 4: Probe Calibration Certificate</b>	<b>20</b>
<b>Appendix 5: Measurement Uncertainty Budget</b>	<b>21</b>
<b>Appendix 6: Dipole Characterization Certificate</b>	<b>23</b>

**1. Introduction**

The Motorola Mobile Devices Business Product Safety Laboratory has performed measurements of the maximum potential exposure to the user of the portable cellular phone covered by this test report. The Specific Absorption Rate (SAR) of this product was measured. The portable cellular phone was tested in accordance with [1], [4] and [5]. The SAR values measured for the portable cellular phone are below the maximum recommended levels of 1.6 W/kg in a 1g average set in [3] and 2.0W/kg in a 10g average set in [2].

For ANSI / IEEE C95.1 (1g), the final SAR reading for this phone is 0.92 W/kg for head adjacent use and 0.87 W/kg for body worn use. These measurements were performed using a Dasy4™ v4.7 system manufactured by Schmid & Partner Engineering AG (SPEAG), of Zurich Switzerland.

**2. Description of the Device Under Test**

**2.1 Antenna description**

<b>Type</b>	Internal Antenna	
<b>Location</b>	Bottom of the transceiver	
<b>Dimensions</b>	Width	39.50mm
	Length	4.8
<b>Configuration</b>	FJA	

**2.2 Device description**

<b>Serial number</b>	<b>A0000002C66591</b>						
<b>Mode(s) of Operation</b>	CDMA 800	CDMA 1700	CDMA 1900	EV-DO Rev.O 800	EV-DO Rev.O 1700	EV-DO Rev.O 1900	Bluetooth
<b>Modulation Mode(s)</b>	QPSK	QPSK	QPSK	QPSK	QPSK	QPSK	GFSK
<b>Maximum Output Power Setting</b>	25.00 dBm	25.00 dBm	25.00 dBm	25.00 dBm	25.00 dBm	25.00 dBm	8.0 dBm
<b>Duty Cycle</b>	1:1	1:1	1:1	1:1	1:1	1:1	1:1
<b>Transmitting Frequency Rang(s)</b>	824.70-848.31 MHz	1711.25-1753.75 MHz	1851.25-1908.75 MHz	824.70-848.31 MHz	1711.25-1753.75 MHz	1851.25-1908.75 MHz	2400.0-2483.5 MHz
<b>Production Unit or Identical Prototype (47 CFR §2.908)</b>	Identical Prototype						
<b>Device Category</b>	Portable						
<b>RF Exposure Limits</b>	General Population / Uncontrolled						

### 3. Test Equipment Used

#### 3.1 Dosimetric System

The Motorola Mobile Devices Business Product Safety & Compliance Laboratory utilizes a Dosimetric Assessment System (Dasy4™ v4.7) manufactured by Schmid & Partner Engineering AG (SPEAG™), of Zurich Switzerland. All the SAR measurements are taken within a shielded enclosure. The overall 10g RSS uncertainty of the measurement system is ±10.8% (K=1) with an expanded uncertainty of ±21.6% (K=2). The overall 1g RSS uncertainty of the measurement system is ±11.1% (K=1) with an expanded uncertainty of ±22.2% (K=2). The measurement uncertainty budget is given in Appendix 5. Per IEEE 1528, this uncertainty budget is applicable to the SAR range of 0.4W/kg to 10W/kg.

The list of calibrated equipment used for the measurements is shown in the following table.

Description	Serial Number	Cal Due Date
DASY4™ DAE V1	656	19-May-2009
E-Field Probe ET3DV6	1502	19-May-2009
S.A.M. Phantom used for 800/900MHz	TP-1129	
S.A.M. Phantom used for 1700/1800/1900/2450MHz	TP-1134	
Dipole Validation Kit, DV900V2	97	22-Apr-2009
Dipole Validation Kit, DV1800V2	277tr	22-Apr-2009
Dipole Validation Kit, DV2450V2	767	22-Apr-2009

#### 3.2 Additional Equipment

Description	Serial Number	Cal Due Date
Signal Generator HP8648C	3847A04840	28-Jan-2009
Power Meter E4419B	GB39511085	28-Jan-2009
Power Sensor #1 - 8481A	MY41095450	28-Jan-2009
Power Sensor #2 - 8481A	2702A82671	28-Jan-2009
Network Analyzer HP8753ES	US39172714	30-Jul-2009
Dielectric Probe Kit HP85070C	US99360207	

**4. Electrical parameters of the tissue simulating liquid**

Prior to conducting SAR measurements, the relative permittivity,  $\epsilon_r$ , and the conductivity,  $\sigma$ , of the tissue simulating liquids were measured with a HP85070 Dielectric Probe Kit. These values, along with the temperature of the simulated tissue are shown in the table below. The recommended limits for permittivity and conductivity are also shown. A mass density of  $\rho=1\text{g/cm}^3$  was entered into the system in all the cases. It can be seen that the measured parameters are within tolerance of the recommended limits specified in [1] and [5].

f (MHz)	Tissue type	Limits / Measured	Dielectric Parameters		
			$\epsilon_r$	$\sigma$ (S/m)	Temp (°C)
835	Head	Measured, 05-Sep-2008	41.9	0.92	21.0
		Recommended Limits	41.5 ±5%	0.90 ±5%	18-25
	Body	Measured, 05-Sep-2008	54.7	0.99	21.1
		Recommended Limits	55.2 ±5%	0.97 ±5%	18-25
1730	Head	Measured, 04-Sep-2008	40.0	1.3	20.7
		Measured, 08-Sep-2008	39.3	1.31	20.9
		Recommended Limits	40.1 ±5%	1.37 ±5%	18-25
	Body	Measured, 03-Sep-2008	53.3	1.41	20.7
		Recommended Limits	53.4 ±5%	1.49 ±5%	18-25
		Measured, 08-Sep-2008	38.7	1.46	20.6
1880	Head	Measured, 09-Sep-2008	39.4	1.45	21.4
		Recommended Limits	40.0 ±5%	1.40 ±5%	18-25
		Measured, 08-Sep-2008	52.6	1.59	21.7
	Body	Recommended Limits	53.3 ±5%	1.52 ±5%	18-25
2450		Body	Measured, 08-Sep-2008	48.7	2.01
	Recommended Limits		52.7 ±10%	1.95 ±5%	18-25

The list of ingredients and the percent composition used for the tissue simulates are indicated in the table below.

Ingredient	835MHz / 900 MHz	835MHz / 900 MHz	1800MHz / 1900 MHz	1800 MHz / 1900 MHz	2450MHz	2450 MHz
	Head	Body	Head	Body	Head	Body
Sugar	57	44.9	--	--	--	--
DGBE	--	--	47	30.8	--	30
Diacetin	--	--	--	--	51	--
Water	40.45	53.06	52.62	68.8	48.75	70
Salt	1.45	0.94	0.38	0.4	0.15	--
HEC	1	1	--	--	--	--
Bact.	0.1	0.1	--	--	0.1	--

## 5. System Accuracy Verification

A system accuracy verification of the DASY4™ was performed using the measurement equipment listed in Section 3.1. The daily system accuracy verification occurs within the flat section of the SAM phantom.

A SAR measurement was performed to verify the measured SAR was within  $\pm 10\%$  from the target SAR indicated in Appendix 6. These frequencies are within  $\pm 10\%$  of the compliance test mid-band frequency as required in [1] and [5]. The test was conducted on the same days as the measurement of the DUT. Recommended limits for permittivity and conductivity, specified in [5], are shown in the table below. The obtained results from the system accuracy verification are also displayed in the table below. SAR values are normalized to 1W forward power delivered to the dipole. It is seen that the system is operating within its specification, as the results are within acceptable tolerance of the reference values. The distributions of SAR compare well with those of the reference measurements (see Appendix 1). The tissue stimulant depth was verified to be 15.0cm  $\pm 0.5$ cm. Z-axis scans showing the SAR penetration are also included in Appendix 1.

f (MHz)	Description	SAR (W/kg), 1gram	Dielectric Parameters		Ambient Temp (°C)	Tissue Temp (°C)
			$\epsilon_r$	$\sigma$ (S/m)		
900	Measured, 05-Sep-2008	11.93	41.2	0.98	21.0	21.8
	Recommended Limits	11.29	41.5 $\pm 5\%$	0.97 $\pm 5\%$	18-25	18-25
1800	Measured, 03-Sep-2008	35.45	39.7	1.37	21.3	21.4
	Measured, 04-Sep-2008	35.98	39.4	1.37	20.7	21.0
	Measured, 05-Sep-2008	37.45	39.0	1.38	21.2	21.0
	Measured, 08-Sep-2008	35.90	39.9	1.37	21.2	21.2
	Measured, 09-Sep-2008	35.48	39.7	1.36	21.4	21.7
	Recommended Limits	37.7	40.0 $\pm 5\%$	1.4 $\pm 5\%$	18-25	18-25
2450	Measured, 08-Sep-2008	53.75	37.7	1.88	21.4	21.5
	Recommended Limits	56.5	39.2 $\pm 10\%$	1.80 $\pm 5\%$	18-25	18-25

The following probe conversion factors were used on the E-Field probe(s) used for the system accuracy verification measurements:

Description	Serial Number	f (MHz)	Conversion Factor	Cal Cert pg #
E-Field Probe ET3DV6	SN1502	900	6.20	8 of 9
		1810	5.34	8 of 9
		2450	4.64	8 of 9

**6. Test Results**

The test sample was operated using an actual transmission through a base station simulator. The base station simulator was setup to the proper channel, transmitter power level and transmit mode of operation. The phone was tested in the configurations stipulated in [1], [4] and [5]. The phone was positioned into these configurations using the device holder supplied with the DASY4™ SAR measurement system. The measured dielectric constant of the material used for the device holder is less than 2.9 and the loss tangent is less than 0.02 (± 30%) at 850MHz. The default settings for the “coarse” and “cube” scans were chosen and used for measurements. The grid spacing of the course scan was set to 15 mm as shown in the SAR plots included in Appendix 2 and 3. Please refer to the DASY4™ manual for additional information on SAR scanning procedures and algorithms used.

The Cellular Phone model covered by this report has the following battery options:

- SNN5826A - 1800 mAH Battery
- SNN5782A - 1100 mAH Battery
- SNN5813A – 910 mAH Battery

The battery with the highest capacity is the SNN5826A. This battery was used to do most of the SAR testing. The phone was placed in the SAR measurement system with a fully charged battery. The configuration that resulted in the highest SAR values were tested using the other batteries listed above.

Per the “SAR Measurement Procedures for 3G Devices” released in October, 2007, RC1, RC3 and RC3 (FCH + SCH) CDMA modes, EVDO Rev O, EVDO Rev A were considered. The conducted power measurements (per steps 3, 4 & 10 of section 4.4.5.2 of 3GPP2 C.5.011 / TIA -98-E) for each mode are shown in the table below.

Conducted power (dBm) for CDMA modes						
	Channel	RC1		RC3		RC3 (FCH + SCH)
		SO2	SO55	SO2	SO55	
CDMA 800	1013	25.14	24.94	25.01	25.03	Per Motorola designs, the maximum power, when in a mode that allows supplemental channels, will always be less than the RC3/RC1 maximum conducted power limit.
	384	25.17	25.05	25.15	25.17	
	777	25.00	24.98	25.04	25.14	
CDMA 1900	25	25.02	25.02	25.04	25.07	
	600	24.91	24.87	24.94	24.96	
	1175	25.01	25.06	25.07	25.05	
AWS	25	25.18	25.14	25.20	25.12	
	450	24.89	24.84	24.95	24.97	
	875	24.67	24.67	24.79	24.84	

Conducted power (dBm) for EVDO modes				
	Channel	Rev 0		Rev A
		FTAP 307.2k	RTAP 153.6k	Subtype 2
CDMA 800	1013	25.18	25.24	N/A
	384	25.27	25.32	N/A
	777	25.19	25.17	N/A
CDMA 1900	25	24.88	25.14	N/A
	600	24.78	24.85	N/A
	1175	24.65	24.78	N/A
CDMA 1700	25	24.68	24.98	N/A
	450	24.71	25.01	N/A
	875	24.74	24.97	N/A

### 6.1 Head Adjacent Test Results

The SAR results shown in tables 1 through 8 are maximum SAR values averaged over 1 gram of phantom tissue, to demonstrate compliance to [3] and also over 10 grams of phantom tissue, to demonstrate compliance to the [6]. Also shown are the measured conducted output power levels for the CDMA RC3/SO55 mode, the temperature of the simulated tissue after the test, the measured drift and the extrapolated SAR. The exact method of extrapolation is  $New\ SAR = Old\ SAR * 10^{(-drift/10)}$ . The SAR reported at the end of the measurement process by the DASY4™ measurement system can be scaled up by the measured drift to determine the SAR at the beginning of the measurement process. This is the most conservative SAR because it corresponds to the average output power at the beginning of the SAR test. This extrapolation has been done because when the DUT is operating properly it may exhibit a slump in radiated power and SAR over time. This is verified by measuring the SAR drift after the test. Note that 800MHz digital mode SAR measurements were performed in accordance with [4].

The left head and right head SAR contour distributions are similar. Because of this similarity, the cheek/touch and 15° tilt test conditions with the highest SAR values in each band are indicated as bold numbers in the following tables and are included in Appendix 2. All other test conditions measured lower SAR values than those included in Appendix 2.

The SAR measurements were performed using the SAM phantoms listed in section 3.1. Since the same phantoms and simulated tissue were used for the system accuracy verification and the device SAR measurements, the Z-axis scans included in Appendix 1 are applicable for verification of simulated tissue depth to be 15.0cm ±0.5cm.

The following probe conversion factors were used on the E-Field probe(s) used for the head adjacent measurements:

Description	Serial Number	f (MHz)	Conversion Factor	Cal Cert pg #
E-Field Probe ET3DV6	SN1502	900	6.20	8 of 9
		1810	5.34	8 of 9

Left Head Cheek Position								
<i>f</i> (MHz)	Description	Conducted Output Power (dBm)	Temp (°C)	Drift (dB)	<i>10g SAR value</i>		<i>1g SAR value</i>	
					Measured (W/kg)	Extrapolated (W/kg)	Measured (W/kg)	Extrapolated (W/kg)
800MHz	Channel 1013	25.03	21.4	-0.04	0.656	0.66	0.892	0.90
	Channel 384	25.17	21.5	-0.16	0.638	0.66	0.859	0.89
	Channel 777	25.14	21.3	-0.1	0.622	0.64	0.847	0.87
1700MHz	Channel 25	25.12						
	Channel 450	24.97	20.4	-0.02	0.314	0.32	0.472	0.47
	Channel 875	24.84						
1900MHz	Channel 25	25.07						
	Channel 600	24.96	21.2	-0.06	0.467	0.47	0.757	0.77
	Channel 1175	25.05						

Table 1: SAR measurement results at the highest possible output power, measured in a head cheek position against the ICNIRP and ANSI SAR Limit.

Right Head Cheek Position								
<i>f</i> (MHz)	Description	Conducted Output Power (dBm)	Temp (°C)	Drift (dB)	<i>10g SAR value</i>		<i>1g SAR value</i>	
					Measured (W/kg)	Extrapolated (W/kg)	Measured (W/kg)	Extrapolated (W/kg)
800MHz	Channel 1013	25.03	21.3	0.04	0.546	0.55	0.736	0.74
	Channel 384	25.17	21.7	-0.02	0.591	0.59	0.803	0.81
	Channel 777	25.14	21.2	-0.03	0.546	0.55	0.741	0.75
1700MHz	Channel 25	25.12						
	Channel 450	24.97	20.7	0.11	0.316	0.32	0.48	0.48
	Channel 875	24.84						
1900MHz	Channel 25	25.07						
	Channel 600	24.96	21.0	0.22	0.357	0.36	0.58	0.58
	Channel 1175	25.05						

Table 2: SAR measurement results at the highest possible output power, measured in a head cheek position against the ICNIRP and ANSI SAR Limit.

Highest Cheek Position with SNN5782A Battery								
<i>f</i> (MHz)	Description	Conducted Output Power (dBm)	Temp (°C)	Drift (dB)	<i>10g SAR value</i>		<i>1g SAR value</i>	
					Measured (W/kg)	Extrapolated (W/kg)	Measured (W/kg)	Extrapolated (W/kg)
800MHz <i>Left</i>	Channel 1013	25.03	21.0	-0.17	0.661	0.69	0.888	0.92
	Channel 384	25.17						
	Channel 777	25.14						
1700MHz <i>Right</i>	Channel 25	25.12						
	Channel 450	24.97	20.5	-0.1	0.33	0.34	0.5	0.51
	Channel 875	24.84						
1900MHz <i>Left</i>	Channel 25	25.07						
	Channel 600	24.96	21.4	-0.16	0.493	0.51	0.799	0.83
	Channel 1175	25.05						

Table 3: SAR measurement results at the highest possible output power, measured in a head cheek position against the ICNIRP and ANSI SAR Limit.

Highest Cheek Position with SNN5813A Battery								
<i>f</i> (MHz)	Description	Conducted Output Power (dBm)	Temp (°C)	Drift (dB)	<i>10g SAR value</i>		<i>1g SAR value</i>	
					Measured (W/kg)	Extrapolated (W/kg)	Measured (W/kg)	Extrapolated (W/kg)
800MHz <i>Left</i>	Channel 1013	25.03	21.0	-0.01	0.667	0.67	0.905	0.91
	Channel 384	25.17						
	Channel 777	25.14						
1700MHz <i>Right</i>	Channel 25	25.12						
	Channel 450	24.97	20.9	-0.06	0.344	0.35	0.516	0.52
	Channel 875	24.84						
1900MHz <i>Left</i>	Channel 25	25.07						
	Channel 600	24.96	20.7	-0.01	0.479	0.48	0.774	0.78
	Channel 1175	25.05						

Table 4: SAR measurement results at the highest possible output power, measured in a head cheek position against the ICNIRP and ANSI SAR Limit.

Left Head 15° Tilt Position								
f (MHz)	Description	Conducted Output Power (dBm)	Temp (°C)	Drift (dB)	10g SAR value		1g SAR value	
					Measured (W/kg)	Extrapolated (W/kg)	Measured (W/kg)	Extrapolated (W/kg)
800MHz	Channel 1013	25.03						
	Channel 384	25.17	21.1	0.00	0.268	0.27	0.35	0.35
	Channel 777	25.14						
1700MHz	Channel 25	25.12						
	Channel 450	24.97	20.7	-0.06	0.163	0.17	0.249	0.25
	Channel 875	24.84						
1900MHz	Channel 25	25.07						
	Channel 600	24.96	21.1	-0.06	0.0781	0.08	0.124	0.13
	Channel 1175	25.05						

Table 5: SAR measurement results at the highest possible output power, measured in a head 15° Tilt position against the ICNIRP and ANSI SAR Limit.

Right Head 15° Tilt Position								
f (MHz)	Description	Conducted Output Power (dBm)	Temp (°C)	Drift (dB)	10g SAR value		1g SAR value	
					Measured (W/kg)	Extrapolated (W/kg)	Measured (W/kg)	Extrapolated (W/kg)
800MHz	Channel 1013	25.03						
	Channel 384	25.17	21.2	-0.06	0.265	0.27	0.348	0.35
	Channel 777	25.14						
1700MHz	Channel 25	25.12						
	Channel 450	24.97	20.6	-0.14	0.165	0.17	0.255	0.26
	Channel 875	24.84						
1900MHz	Channel 25	25.07						
	Channel 600	24.96	20.9	0.19	0.0785	0.08	0.128	0.13
	Channel 1175	25.05						

Table 6: SAR measurement results at the highest possible output power, measured in a head 15° Tilt position against the ICNIRP and ANSI SAR Limit.

Highest 15° Tilt Position with SNN5782A Battery								
f (MHz)	Description	Conducted Output Power (dBm)	Temp (°C)	Drift (dB)	10g SAR value		1g SAR value	
					Measured (W/kg)	Extrapolated (W/kg)	Measured (W/kg)	Extrapolated (W/kg)
800MHz <i>Left</i>	Channel 1013	25.03						
	Channel 384	25.17	20.9	-0.17	0.283	0.29	0.371	0.39
	Channel 777	25.14						
1700MHz <i>Right</i>	Channel 25	25.12						
	Channel 450	24.97	20.7	0.07	0.196	0.20	0.305	0.31
	Channel 875	24.84						
1900MHz <i>Right</i>	Channel 25	25.07						
	Channel 600	24.96	21.5	-0.14	0.0904	0.09	0.146	0.15
	Channel 1175	25.05						

Table 7: SAR measurement results at the highest possible output power, measured in a head 15° Tilt position against the ICNIRP and ANSI SAR Limit.

Highest 15° Tilt Position with SNN5813A Battery								
f (MHz)	Description	Conducted Output Power (dBm)	Temp (°C)	Drift (dB)	10g SAR value		1g SAR value	
					Measured (W/kg)	Extrapolated (W/kg)	Measured (W/kg)	Extrapolated (W/kg)
800MHz <i>Left</i>	Channel 1013	25.03						
	Channel 384	25.17	21.6	-0.01	0.278	0.28	0.366	0.37
	Channel 777	25.14						
1700MHz <i>Right</i>	Channel 25	25.12						
	Channel 450	24.97	20.8	-0.05	0.179	0.18	0.276	0.28
	Channel 875	24.84						
1900MHz <i>Right</i>	Channel 25	25.07						
	Channel 600	24.96	20.6	0.04	0.101	0.10	0.164	0.16
	Channel 1175	25.05						

Table 8: SAR measurement results at the highest possible output power, measured in a head 15° Tilt position against the ICNIRP and ANSI SAR Limit.

## 6.2 Body Worn Test Results

The SAR results shown in tables 9 through 14 are maximum SAR values averaged over 1 gram of phantom tissue, to demonstrate compliance to [3] and also over 10 grams of phantom tissue, to demonstrate compliance to the [6]. Also shown are the measured conducted output power levels for the CDMA RC3/SO55 mode, the temperature of the test facility during the test, the temperature of the tissue simulate after the test, the measured drift and the extrapolated SAR. The exact method of extrapolation is  $\text{New SAR} = \text{Old SAR} * 10^{(-\text{drift}/10)}$ . The SAR reported at the end of the measurement process by the DASY4™ measurement system can be scaled up by the measured drift to determine the SAR at the beginning of the measurement process. This is the most conservative SAR because it corresponds to the average output power at the beginning of the SAR test. This extrapolation has been done because when the DUT is operating properly it may exhibit a slump in radiated power and SAR over time. This is verified by measuring the SAR drift after the test. Note that 800MHz digital mode SAR measurements were performed in accordance with [4].

The test conditions that produced the highest SAR values in each band are indicated as bold numbers in the following tables and are included in Appendix 3. All other test conditions measured lower SAR values than those included in Appendix 3.

A “flat” phantom was for the body-worn tests. This “flat” phantom is made out of 1” thick natural High Density Polyethylene with a thickness at the bottom equal to 2.0mm. It measures 52.7cm(long) x 26.7cm(wide) x 21.2cm(tall). The measured dielectric constant of the material used is less than 2.3 and the loss tangent is less than 0.0046 all the way up to 2.184GHz.

The tissue stimulant depth was verified to be 15.0cm ±0.5cm. The same device holder described in section 6 was used for positioning the phone. The functional accessories were divided into two categories, the ones with metal components and the ones with non-metal components. For non-metallic component accessories’, testing was performed on the accessory that displayed the closest proximity to the flat phantom. Each metallic component accessory, if any, was checked for uniqueness of metal component so that each is tested with the device. If multiple accessories shared an identical metal component, only the accessory that dictates the closest spacing to the body was tested. In addition to accessory testing, the cellular phone was tested with the front and back of the phone facing the phantom. For voice mode operation, the phone was placed as a distance of 15mm from the phantom. For data mode operation, the phone was placed as a distance of 25mm from the phantom. The cellular phone was tested with a headset connected to the device for all body-worn SAR measurements.

There are no Body-Worn Accessories available for this phone at the time of testing hence the device was tested per the supplement C testing guidelines for devices that do not have body worn accessories. The phone was placed a maximum of 15mm away from a flat phantom per the supplement C standard guidelines to perform SAR measurement.

The following probe conversion factors were used on the E-Field probe(s) used for the body worn measurements:

Description	Serial Number	f (MHz)	Conversion Factor	Cal Cert pg #
E-Field Probe ET3DV6	SN1520	900	6.08	8 of 9
		1810	4.85	8 of 9
		2450	4.16	8 of 9

Body-Worn; Front of Phone 15mm from Phantom								
<i>f</i> (MHz)	Description	Conducted Output Power (dBm)	Temp (°C)	Drift (dB)	<i>10g SAR value</i>		<i>1g SAR value</i>	
					Measured (W/kg)	Extrapolated (W/kg)	Measured (W/kg)	Extrapolated (W/kg)
800MHz	Channel 1013	25.03						
	Channel 384	25.17	21.4	-0.13	0.239	0.25	0.339	0.35
	Channel 777	25.14						
1700MHz	Channel 25	25.12						
	Channel 450	24.97	20.8	-0.29	0.0829	0.09	0.139	0.15
	Channel 875	24.84						
1900MHz	Channel 25	25.07						
	Channel 600	24.96	21.3	0.1	0.159	0.16	0.279	0.28
	Channel 1175	25.05						

**Table 9: SAR measurement results at the highest possible output power, measured in a body-worn position against the ICNIRP and ANSI SAR Limit.**

Body-Worn; Back of Phone 15mm from Phantom								
<i>f</i> (MHz)	Description	Conducted Output Power (dBm)	Temp (°C)	Drift (dB)	<i>10g SAR value</i>		<i>1g SAR value</i>	
					Measured (W/kg)	Extrapolated (W/kg)	Measured (W/kg)	Extrapolated (W/kg)
800MHz	Channel 1013	25.03						
	Channel 384	25.17	21.3	0.05	0.565	0.57	0.798	0.80
	Channel 777	25.14						
1700MHz	Channel 25	25.12						
	Channel 450	24.97	<b>20.7</b>	<b>0.00</b>	<b>0.257</b>	<b>0.26</b>	<b>0.392</b>	<b>0.39</b>
	Channel 875	24.84						
1900MHz	Channel 25	25.07						
	Channel 600	24.96	21.2	0.05	0.205	0.21	0.315	0.32
	Channel 1175	25.05						

**Table 10: SAR measurement results at the highest possible output power, measured in a body-worn position against the ICNIRP and ANSI SAR Limit.**

Highest Body-Worn position with SNN5782A Battery								
<i>f</i> (MHz)	Description	Conducted Output Power (dBm)	Temp (°C)	Drift (dB)	<i>10g SAR value</i>		<i>1g SAR value</i>	
					Measured (W/kg)	Extrapolated (W/kg)	Measured (W/kg)	Extrapolated (W/kg)
<b>800MHz</b> <i>Back</i>	Channel 1013	25.03						
	Channel 384	25.17	21.2	-0.09	0.503	0.51	0.705	0.72
	Channel 777	25.14						
<b>1700MHz</b> <i>Back</i>	Channel 25	25.12						
	Channel 450	24.97	20.7	-0.06	0.146	0.15	0.218	0.22
	Channel 875	24.84						
<b>1900MHz</b> <i>Back</i>	Channel 25	25.07						
	Channel 600	24.96	21.1	0.02	0.142	0.14	0.237	0.24
	Channel 1175	25.05						

**Table 11: SAR measurement results at the highest possible output power, measured in a body-worn position against the ICNIRP and ANSI SAR Limit.**

Highest Body-Worn position with SNN5813A Battery								
<i>f</i> (MHz)	Description	Conducted Output Power (dBm)	Temp (°C)	Drift (dB)	<i>10g SAR value</i>		<i>1g SAR value</i>	
					Measured (W/kg)	Extrapolated (W/kg)	Measured (W/kg)	Extrapolated (W/kg)
<b>800MHz</b> <i>Back</i>	Channel 1013	25.03						
	Channel 384	25.17	<b>21.1</b>	<b>-0.11</b>	<b>0.594</b>	<b>0.61</b>	<b>0.85</b>	<b>0.87</b>
	Channel 777	25.14						
<b>1700MHz</b> <i>Back</i>	Channel 25	25.12						
	Channel 450	24.97	21.6	0.03	0.214	0.21	0.322	0.32
	Channel 875	24.84						
<b>1900MHz</b> <i>Back</i>	Channel 25	25.07						
	Channel 600	24.96	<b>21.7</b>	<b>0.00</b>	<b>0.237</b>	<b>0.24</b>	<b>0.367</b>	<b>0.37</b>
	Channel 1175	25.05						

**Table 12: SAR measurement results at the highest possible output power, measured in a body-worn position against the ICNIRP and ANSI SAR Limit.**

Bluetooth Stand-alone : Highest Body-Worn Position on each band 15mm from Phantom								
<i>f</i> (MHz)	Description	Conducted Output Power (dBm)	Temp (°C)	Drift (dB)	<i>10g SAR value</i>		<i>1g SAR value</i>	
					Measured (W/kg)	Extrapolated (W/kg)	Measured (W/kg)	Extrapolated (W/kg)
2450MHz Back SNN5813A	Channel 0							
	Channel 39		21.0	-2.36	0.0000344	0.00	0.000173	0.00
	Channel 78							
2450MHz Back SNN5826A	Channel 0							
	Channel 39		21.3	11.7	0.00000149	0.00	0.00000722	0.00
	Channel 78							

Table 13: SAR measurement results at the highest possible output power, measured in a body-worn position against the ICNIRP and ANSI SAR Limit.

Highest Extrapolated Body-Worn SAR values summation with Bluetooth Stand-alone							
<i>f</i> (MHz)	Description	<i>10g SAR value</i>			<i>1g SAR value</i>		
		Measured (W/kg)	Bluetooth Measurement (W/Kg)	Extrapolated (W/kg)	Measured (W/kg)	Bluetooth Measurement (W/Kg)	Extrapolated (W/kg)
800MHz	Body-Worn: Back of phone 15mm away from phantom with SNN5813A battery	0.61	0.00	0.61	0.87	0.00	0.87
1700MHz	Body-Worn: Back of phone 15mm away from phantom with SNN5826A battery	0.26	0.00	0.26	0.39	0.00	0.39
1900MHz	Body-Worn: Back of phone 15mm away from phantom with SNN5813A battery	0.24	0.00	0.24	0.37	0.00	0.37

Table 14: SAR measurement results at the highest possible output power, calculated in a body-worn position against the ICNIRP and ANSI SAR Limit.

## References

- [1] CENELEC, en62209-1:2006 “Human Exposure to Radio Frequency Fields From Hand - Held and Body - Mounted Wireless Communication Devices – Human Models, Instrumentation, and Procedures”
- [2] CENELEC, en50360:2001 “Product standard to demonstrate the compliance of mobile phones with the basic restrictions related to human exposure to electromagnetic fields (300MHz – 3GHz)”.
- [3] ANSI / IEEE, C95.1 1999 Edition “IEEE Standard for Safety Levels with Respect to Human Exposure to Radio Frequency Electromagnetic Fields, 3kHz to 300GHz”
- [4] FCC OET Bulletin 65 Supplement C 01-01
- [5] IEEE 1528 2003 Edition “IEEE Recommended Practice for Determining the Peak Spatial-Average Specific Absorption Rate (SAR) in the Human Head from Wireless Communications Devices: Measurement Techniques”
- [6] ICNIRP Guidelines “Guidelines for Limiting Exposure to Time-Varying Electric, Magnetic, and Electromagnetic Fields (up to 300 GHz)”

**Appendix 1**

**SAR distribution comparison for the system accuracy verification**

## Test Laboratory: Motorola 0905'2008\_900MHz\_Good +5.6%

Procedure Notes: 900 MHz System Performance Check / Dipole Sn# 097 PM1 Power = 200 mW

Sim.Temp@meas = 21.9C Sim.Temp@SPC = 21.8C Room Temp @ SPC = 21.0C

Communication System: CW - Dipole; Frequency: 900 MHz; Channel Number: 4; Duty Cycle: 1:1

Medium: VALIDATION Only; Medium parameters used:  $f = 900$  MHz;  $\sigma = 0.98$  mho/m;  $\epsilon_r = 41.2$ ;  $\rho = 1000$  kg/m<sup>3</sup>

DASY4 Configuration:

- Probe: ET3DV6 - SN1502; ConvF(6.2, 6.2, 6.2); Calibrated: 5/19/2008
- Sensor-Surface: 4mm (Mechanical Surface Detection)
- Electronics: DAE4 Sn656; Calibrated: 5/19/2008
- Phantom: PCS-9\_Sugar SAM (extended range), Rev.1 (25-Mar-05); Type: SAM v4.0; Serial: TP- 1129;
- Measurement SW: DASY4, V4.7 Build 71; Postprocessing SW: SEMCAD, V1.8 Build 184

### Daily SPC Check/Dipole Area Scan (4x9x1):

Measurement grid: dx=15mm, dy=15mm

Maximum value of SAR (measured) = 2.22 mW/g

### Daily SPC Check/0-Degree, 5x5x7 Cube (5x5x7)/Cube 0: Measurement grid: dx=8mm, dy=8mm, dz=5mm

Reference Value = 53.6 V/m; Power Drift = -0.019 dB

Peak SAR (extrapolated) = 3.49 W/kg

**SAR(1 g) = 2.36 mW/g; SAR(10 g) = 1.51 mW/g**

Maximum value of SAR (measured) = 2.58 mW/g

### Daily SPC Check/90-Degree 5x5x7 Cube (5x5x7)/Cube 0:

Measurement grid: dx=8mm, dy=8mm, dz=5mm

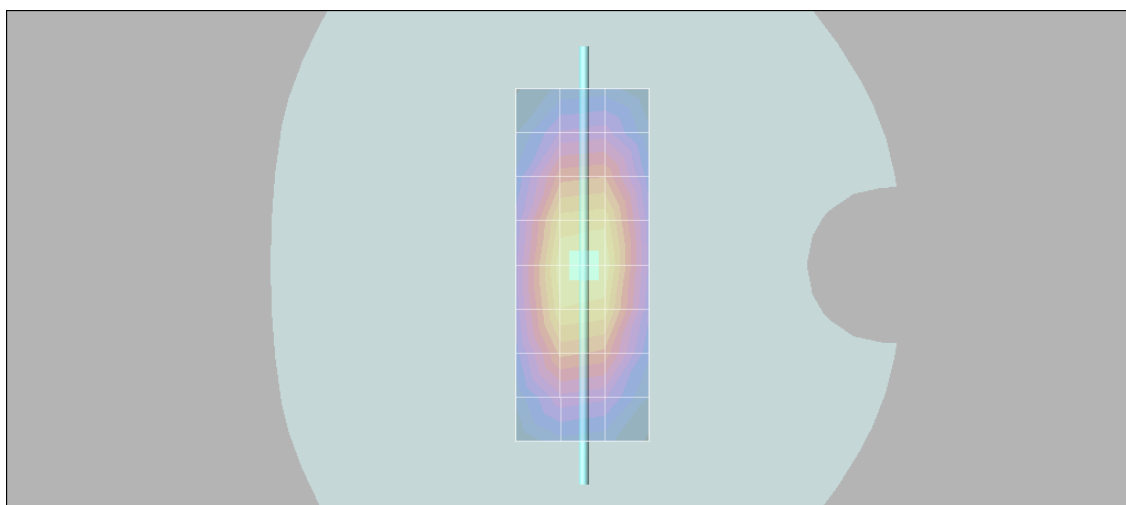
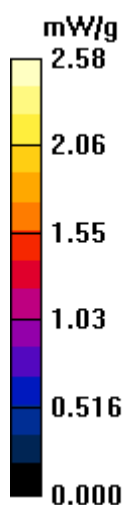
Reference Value = 53.6 V/m; Power Drift = -0.019 dB

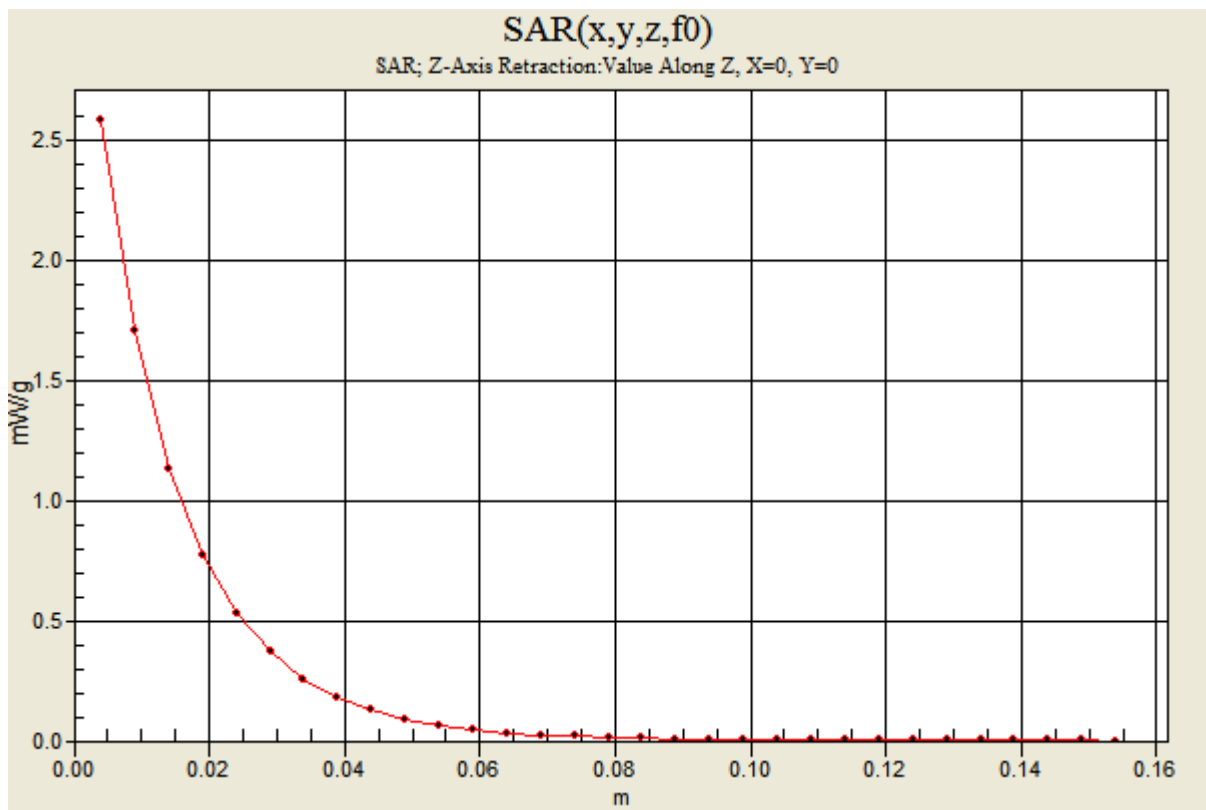
Peak SAR (extrapolated) = 3.55 W/kg

**SAR(1 g) = 2.41 mW/g; SAR(10 g) = 1.55 mW/g**

Maximum value of SAR (measured) = 2.61 mW/g

### Daily SPC Check/Z-Axis Retraction (1x1x31): Measurement grid: dx=20mm, dy=20mm, dz=5mm





## Test Laboratory: Motorola 0903'2008\_1800MHz\_Good -6.0%

Procedure Notes: 1800 MHz System Performance Check / Dipole Sn# 277tr PM1 Power = 198 mW

Sim.Temp@meas = 21.4C Sim.Temp@SPC = 21.4C Room Temp @ SPC = 21.3C

Communication System: CW - Dipole; Frequency: 1800 MHz; Channel Number: 8; Duty Cycle: 1:1

Medium: VALIDATION Only; Medium parameters used:  $f = 1800$  MHz;  $\sigma = 1.37$  mho/m;  $\epsilon_r = 39.7$ ;  $\rho = 1000$  kg/m<sup>3</sup>

DASY4 Configuration:

- Probe: ET3DV6 - SN1502; ConvF(5.34, 5.34, 5.34); Calibrated: 5/19/2008
- Sensor-Surface: 4mm (Mechanical Surface Detection)
- Electronics: DAE4 Sn656; Calibrated: 5/19/2008
- Phantom: PCS-9\_Glycol SAM (extended range), Rev.1 (25-Mar-05); Type: SAM v4.0; Serial: TP-1134;
- Measurement SW: DASY4, V4.7 Build 71; Postprocessing SW: SEMCAD, V1.8 Build 184

### Daily SPC Check/Dipole Area Scan (4x9x1):

Measurement grid: dx=15mm, dy=15mm

Maximum value of SAR (measured) = 6.76 mW/g

### Daily SPC Check/0-Degree, 5x5x7 Cube (5x5x7)/Cube 0: Measurement grid: dx=8mm, dy=8mm, dz=5mm

Reference Value = 75.8 V/m; Power Drift = 0.074 dB

Peak SAR (extrapolated) = 12.2 W/kg

SAR(1 g) = 6.96 mW/g; SAR(10 g) = 3.72 mW/g

Maximum value of SAR (measured) = 7.76 mW/g

### Daily SPC Check/90-Degree 5x5x7 Cube (5x5x7)/Cube 0:

Measurement grid: dx=8mm, dy=8mm, dz=5mm

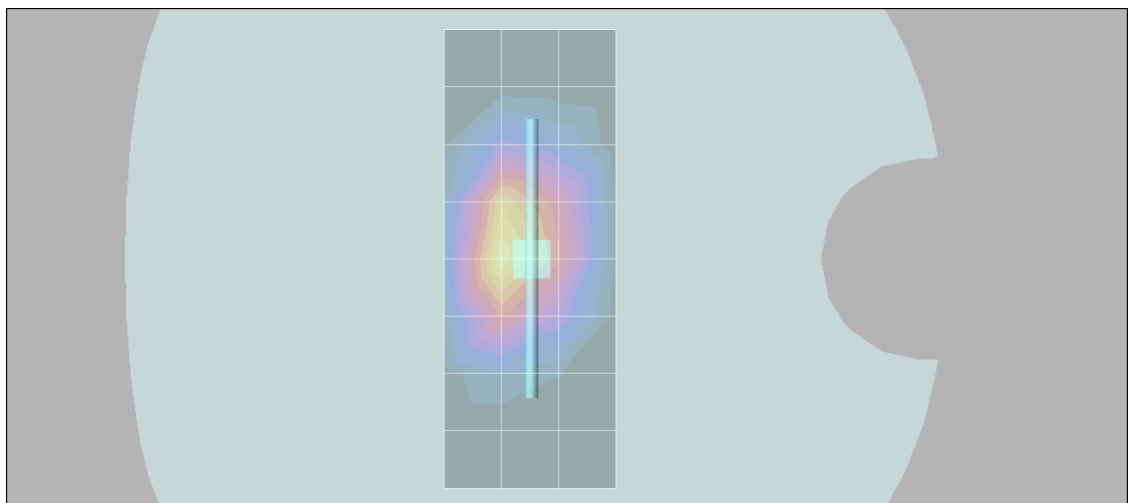
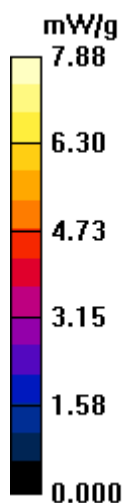
Reference Value = 75.8 V/m; Power Drift = 0.074 dB

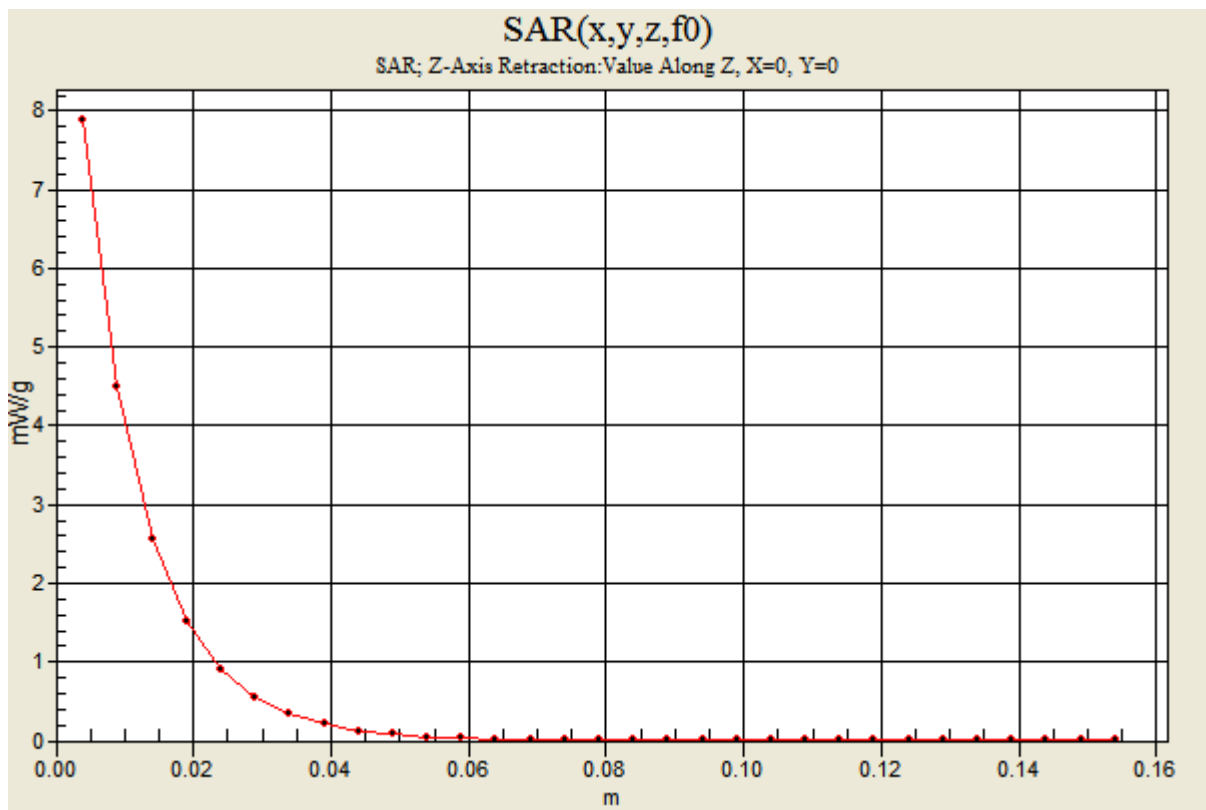
Peak SAR (extrapolated) = 12.4 W/kg

SAR(1 g) = 7.08 mW/g; SAR(10 g) = 3.78 mW/g

### Daily SPC Check/Z-Axis Retraction (1x1x31): Measurement grid: dx=20mm, dy=20mm, dz=5mm

Maximum value of SAR (measured) = 7.88 mW/g





## Test Laboratory: Motorola 0904'2008\_1800MHz\_Good -4.6%

Procedure Notes: 1800 MHz System Performance Check / Dipole Sn# 277tr PM1 Power = 200 mW

Sim.Temp@meas = 21.2C Sim.Temp@SPC = 21.0C Room Temp @ SPC = 20.7C

Communication System: CW - Dipole; Frequency: 1800 MHz; Channel Number: 8; Duty Cycle: 1:1

Medium: VALIDATION Only; Medium parameters used:  $f = 1800$  MHz;  $\sigma = 1.37$  mho/m;  $\epsilon_r = 39.4$ ;  $\rho = 1000$  kg/m<sup>3</sup>

DASY4 Configuration:

- Probe: ET3DV6 - SN1502; ConvF(5.34, 5.34, 5.34); Calibrated: 5/19/2008
- Sensor-Surface: 4mm (Mechanical Surface Detection)
- Electronics: DAE4 Sn656; Calibrated: 5/19/2008
- Phantom: PCS-9\_Glycol SAM (extended range), Rev.1 (25-Mar-05); Type: SAM v4.0; Serial: TP-1134;
- Measurement SW: DASY4, V4.7 Build 71; Postprocessing SW: SEMCAD, V1.8 Build 184

### Daily SPC Check/Dipole Area Scan (4x9x1):

Measurement grid: dx=15mm, dy=15mm

Maximum value of SAR (measured) = 6.00 mW/g

### Daily SPC Check/0-Degree, 5x5x7 Cube (5x5x7)/Cube 0:

Measurement grid: dx=8mm, dy=8mm, dz=5mm

Reference Value = 80.1 V/m; Power Drift = 0.030 dB

Peak SAR (extrapolated) = 12.7 W/kg

**SAR(1 g) = 7.18 mW/g; SAR(10 g) = 3.81 mW/g**

Maximum value of SAR (measured) = 8.05 mW/g

### Daily SPC Check/90-Degree 5x5x7 Cube (5x5x7)/Cube 0:

Measurement grid: dx=8mm, dy=8mm, dz=5mm

Reference Value = 80.1 V/m; Power Drift = 0.030 dB

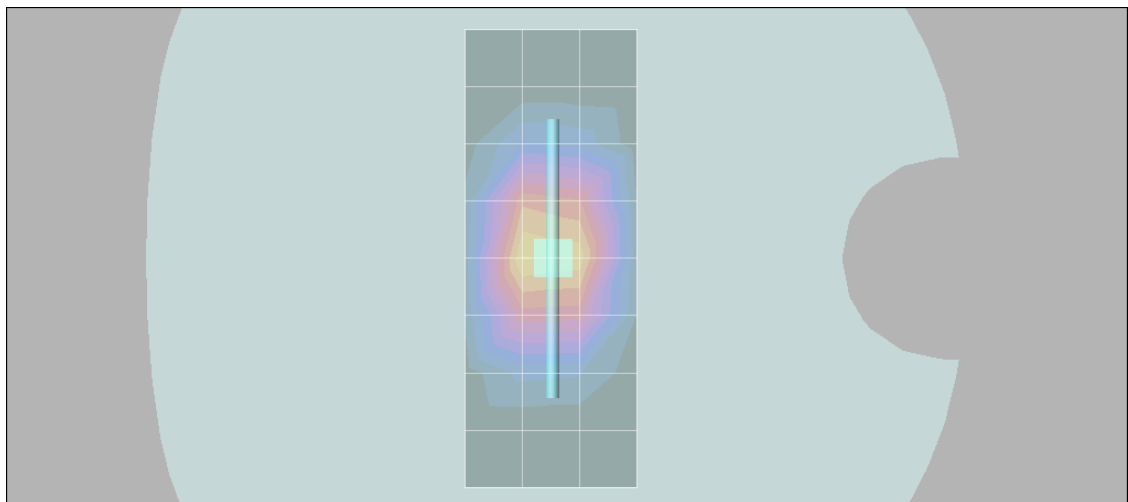
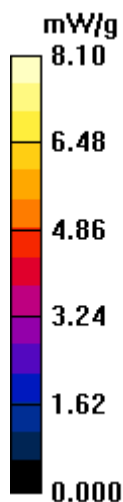
Peak SAR (extrapolated) = 12.7 W/kg

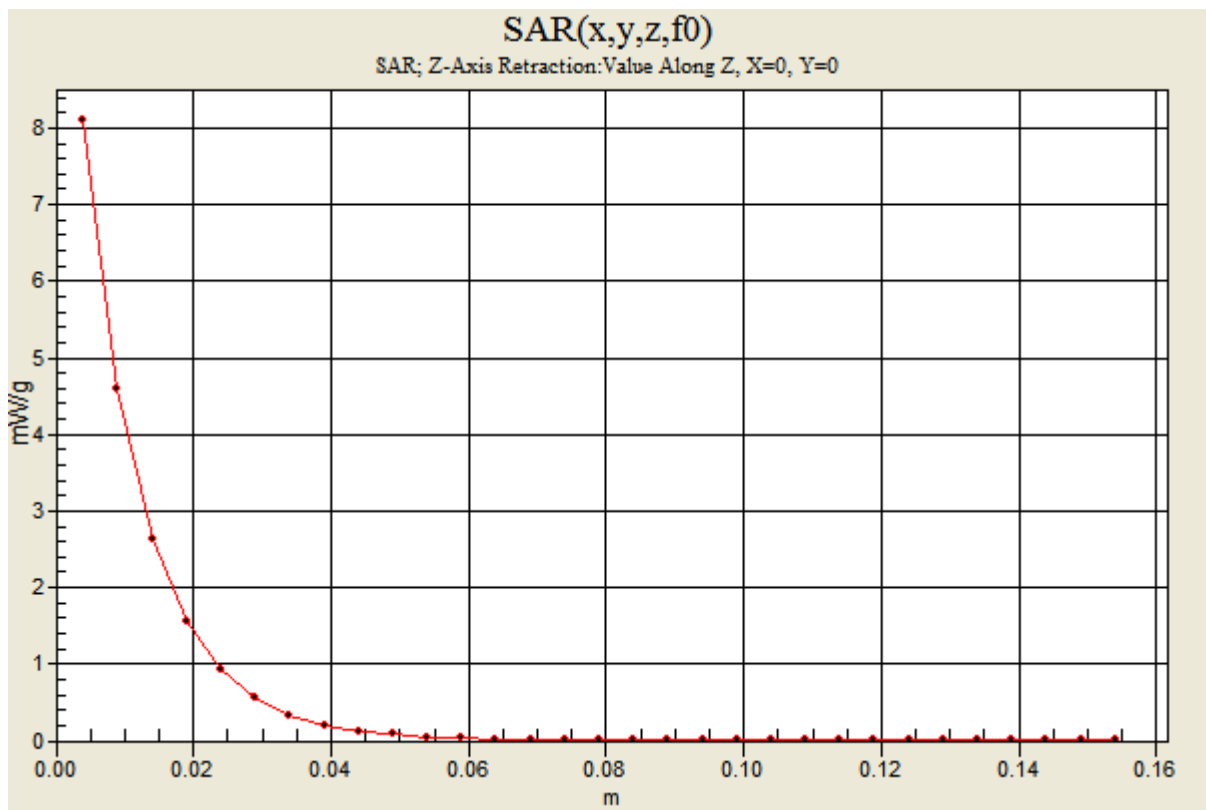
**SAR(1 g) = 7.21 mW/g; SAR(10 g) = 3.84 mW/g**

Maximum value of SAR (measured) = 8.07 mW/g

### Daily SPC Check/Z-Axis Retraction (1x1x31): Measurement grid: dx=20mm, dy=20mm, dz=5mm

Maximum value of SAR (measured) = 8.10 mW/g





## Test Laboratory: Motorola 0905'2008\_1800MHz\_Good -0.7%

Procedure Notes: 1800 MHz System Performance Check / Dipole Sn# 277tr PM1 Power = 200 mW

Sim.Temp@meas = 20.8C Sim.Temp@SPC = 21.0C Room Temp @ SPC = 21.2C

Communication System: CW - Dipole; Frequency: 1800 MHz; Channel Number: 8; Duty Cycle: 1:1

Medium: VALIDATION Only; Medium parameters used:  $f = 1800$  MHz;  $\sigma = 1.38$  mho/m;  $\epsilon_r = 39$ ;  $\rho = 1000$  kg/m<sup>3</sup>

DASY4 Configuration:

- Probe: ET3DV6 - SN1502; ConvF(5.34, 5.34, 5.34); Calibrated: 5/19/2008
- Sensor-Surface: 4mm (Mechanical Surface Detection)
- Electronics: DAE4 Sn656; Calibrated: 5/19/2008
- Phantom: PCS-9\_Glycol SAM (extended range), Rev.1 (25-Mar-05); Type: SAM v4.0; Serial: TP-1134;
- Measurement SW: DASY4, V4.7 Build 71; Postprocessing SW: SEMCAD, V1.8 Build 184

### Daily SPC Check/Dipole Area Scan (4x9x1):

Measurement grid: dx=15mm, dy=15mm

Maximum value of SAR (measured) = 6.45 mW/g

### Daily SPC Check/0-Degree, 5x5x7 Cube (5x5x7)/Cube 0:

Measurement grid: dx=8mm, dy=8mm, dz=5mm

Reference Value = 81.5 V/m; Power Drift = 0.014 dB

Peak SAR (extrapolated) = 13.2 W/kg

**SAR(1 g) = 7.49 mW/g; SAR(10 g) = 3.97 mW/g**

Maximum value of SAR (measured) = 8.39 mW/g

### Daily SPC Check/90-Degree 5x5x7 Cube (5x5x7)/Cube 0:

Measurement grid: dx=8mm, dy=8mm, dz=5mm

Reference Value = 81.5 V/m; Power Drift = 0.014 dB

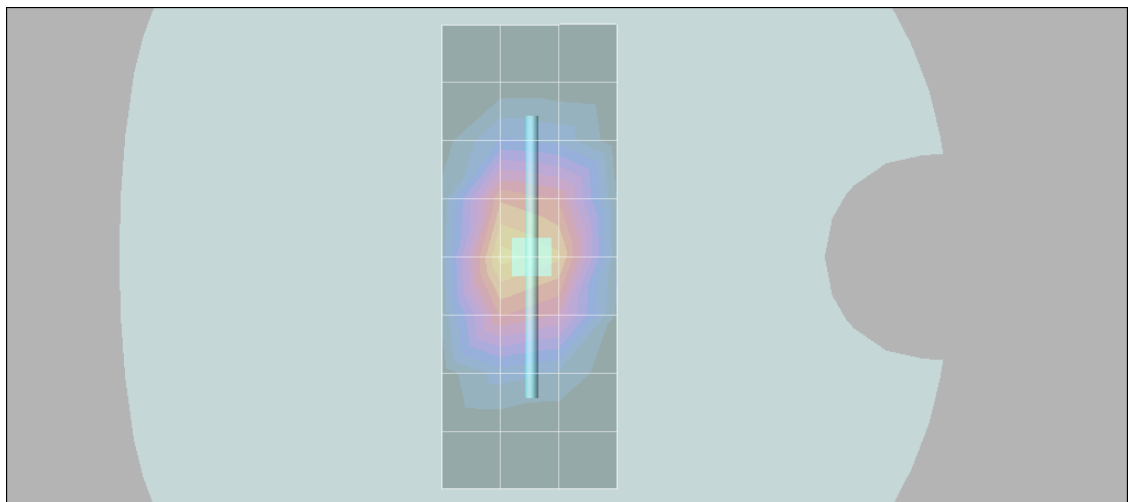
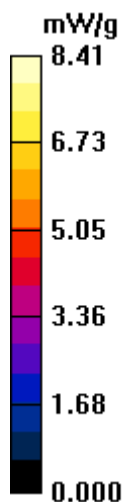
Peak SAR (extrapolated) = 13.1 W/kg

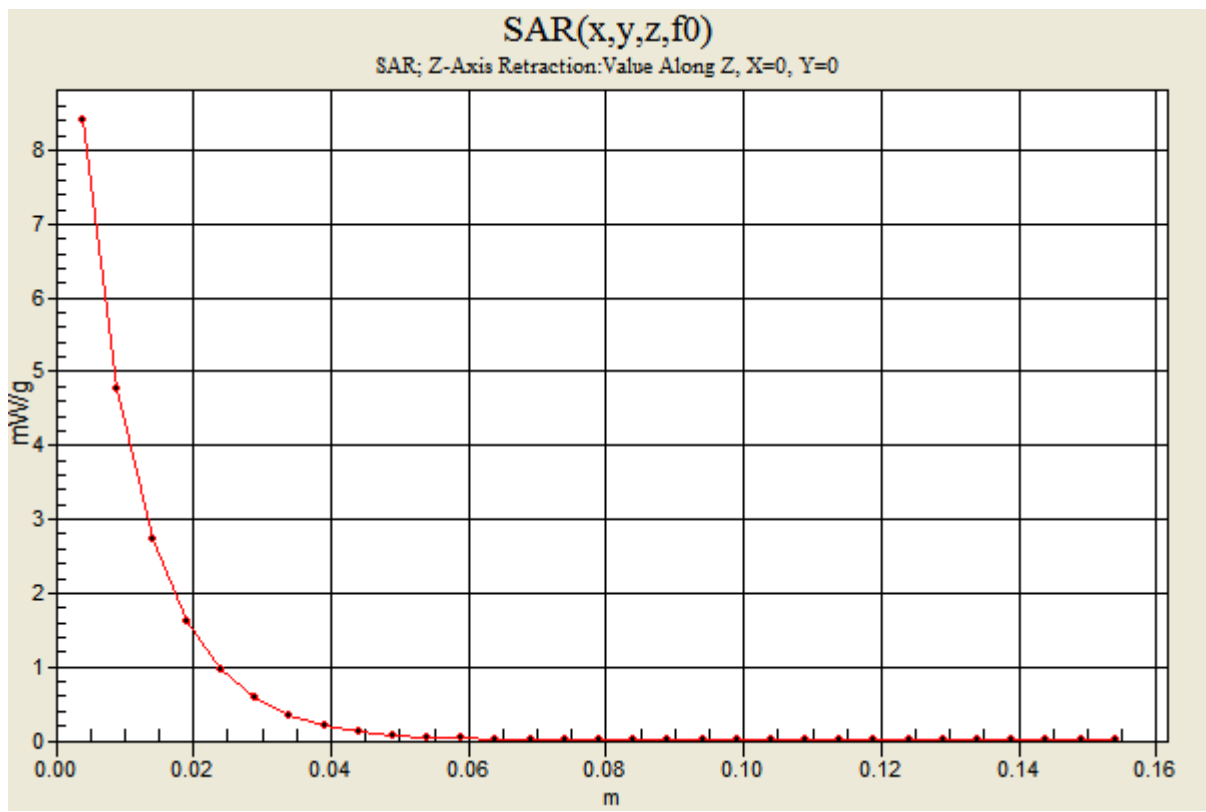
**SAR(1 g) = 7.49 mW/g; SAR(10 g) = 3.99 mW/g**

Maximum value of SAR (measured) = 8.32 mW/g

### Daily SPC Check/Z-Axis Retraction (1x1x31): Measurement grid: dx=20mm, dy=20mm, dz=5mm

Maximum value of SAR (measured) = 8.41 mW/g





## Test Laboratory: Motorola 0908'2008\_1800MHz\_Good -4.8%

Procedure Notes: 1800 MHz System Performance Check / Dipole Sn# 277tr PM1 Power = 200 mW

Sim.Temp@meas = 21.3C Sim.Temp@SPC = 21.2C Room Temp @ SPC = 21.2C

Communication System: CW - Dipole; Frequency: 1800 MHz; Channel Number: 8; Duty Cycle: 1:1

Medium: VALIDATION Only; Medium parameters used:  $f = 1800$  MHz;  $\sigma = 1.37$  mho/m;  $\epsilon_r = 39.9$ ;  $\rho = 1000$  kg/m<sup>3</sup>

DASY4 Configuration:

- Probe: ET3DV6 - SN1502; ConvF(5.34, 5.34, 5.34); Calibrated: 5/19/2008
- Sensor-Surface: 4mm (Mechanical Surface Detection)
- Electronics: DAE4 Sn656; Calibrated: 5/19/2008
- Phantom: PCS-9\_Glycol SAM (extended range), Rev.1 (25-Mar-05); Type: SAM v4.0; Serial: TP-1134;
- Measurement SW: DASY4, V4.7 Build 71; Postprocessing SW: SEMCAD, V1.8 Build 184

### Daily SPC Check/Dipole Area Scan (4x9x1):

Measurement grid: dx=15mm, dy=15mm

Maximum value of SAR (measured) = 6.89 mW/g

### Daily SPC Check/0-Degree, 5x5x7 Cube (5x5x7)/Cube 0: Measurement grid: dx=8mm, dy=8mm, dz=5mm

Reference Value = 77.9 V/m; Power Drift = 0.041 dB

Peak SAR (extrapolated) = 12.6 W/kg

**SAR(1 g) = 7.18 mW/g; SAR(10 g) = 3.83 mW/g**

Maximum value of SAR (measured) = 8.01 mW/g

### Daily SPC Check/90-Degree 5x5x7 Cube (5x5x7)/Cube 0:

Measurement grid: dx=8mm, dy=8mm, dz=5mm

Reference Value = 77.9 V/m; Power Drift = 0.041 dB

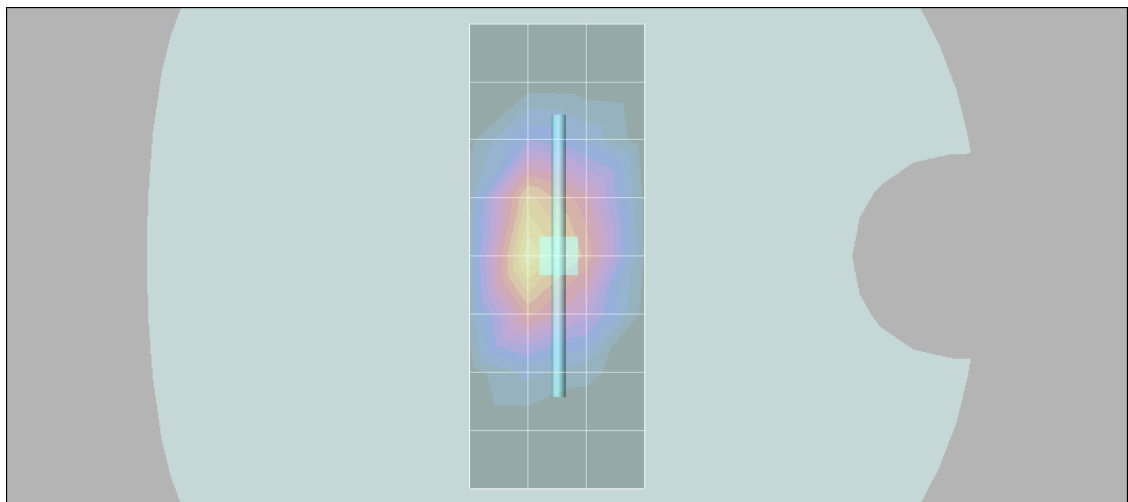
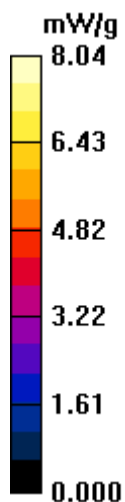
Peak SAR (extrapolated) = 12.5 W/kg

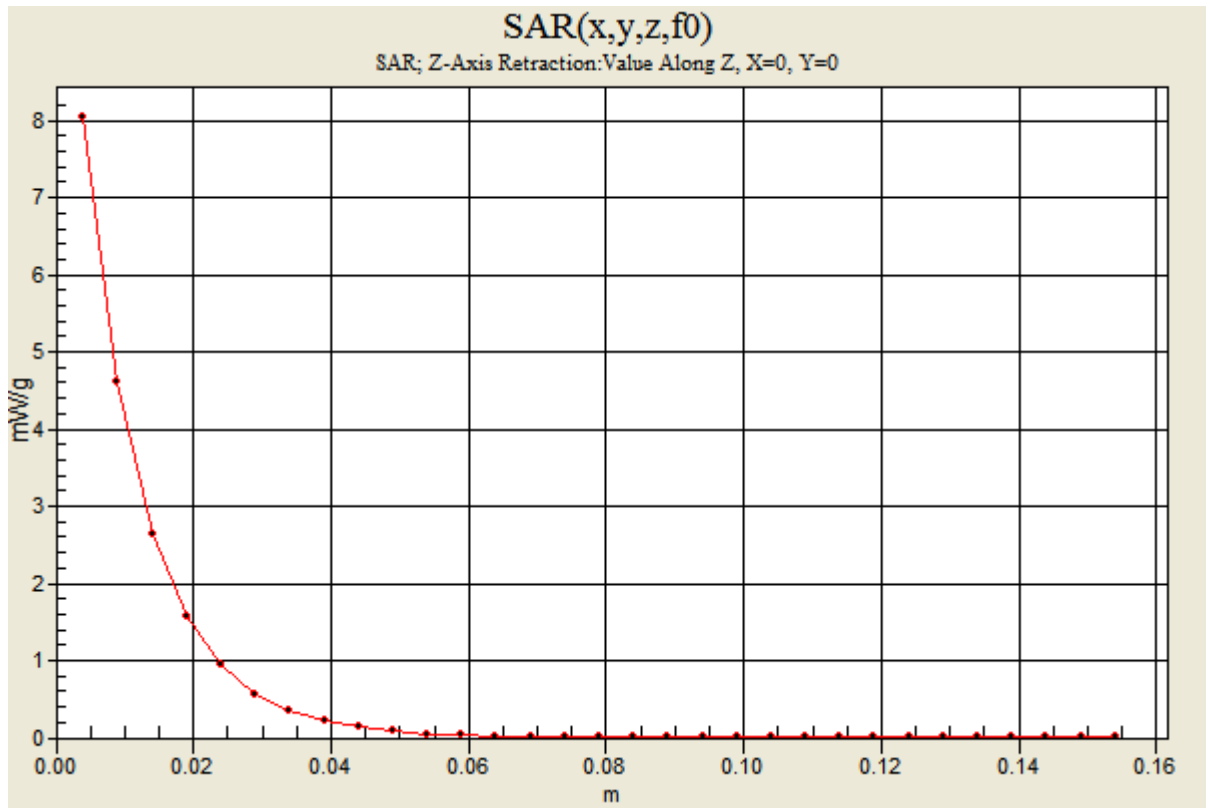
**SAR(1 g) = 7.18 mW/g; SAR(10 g) = 3.85 mW/g**

Maximum value of SAR (measured) = 8.06 mW/g

### Daily SPC Check/Z-Axis Retraction (1x1x31): Measurement grid: dx=20mm, dy=20mm, dz=5mm

Maximum value of SAR (measured) = 8.04 mW/g





## Test Laboratory: Motorola 0909'2008\_1800MHz\_Good -5.9%

Procedure Notes: 1800 MHz System Performance Check / Dipole Sn# 277tr PM1 Power = 200 mW

Sim.Temp@meas = 21.9C Sim.Temp@SPC = 21.7C Room Temp @ SPC = 21.4C

Communication System: CW - Dipole; Frequency: 1800 MHz; Channel Number: 8; Duty Cycle: 1:1

Medium: VALIDATION Only; Medium parameters used:  $f = 1800$  MHz;  $\sigma = 1.36$  mho/m;  $\epsilon_r = 39.7$ ;  $\rho = 1000$  kg/m<sup>3</sup>

DASY4 Configuration:

- Probe: ET3DV6 - SN1502; ConvF(5.34, 5.34, 5.34); Calibrated: 5/19/2008
- Sensor-Surface: 4mm (Mechanical Surface Detection)
- Electronics: DAE4 Sn656; Calibrated: 5/19/2008
- Phantom: PCS-9\_Glycol SAM (extended range), Rev.1 (25-Mar-05); Type: SAM v4.0; Serial: TP-1134;
- Measurement SW: DASY4, V4.7 Build 71; Postprocessing SW: SEMCAD, V1.8 Build 184

### Daily SPC Check/Dipole Area Scan (4x9x1):

Measurement grid: dx=15mm, dy=15mm

Maximum value of SAR (measured) = 5.94 mW/g

### Daily SPC Check/0-Degree, 5x5x7 Cube (5x5x7)/Cube 0: Measurement grid: dx=8mm, dy=8mm, dz=5mm

Reference Value = 80.4 V/m; Power Drift = 0.024 dB

Peak SAR (extrapolated) = 12.2 W/kg

**SAR(1 g) = 7.06 mW/g; SAR(10 g) = 3.78 mW/g**

Maximum value of SAR (measured) = 7.90 mW/g

### Daily SPC Check/90-Degree 5x5x7 Cube (5x5x7)/Cube 0:

Measurement grid: dx=8mm, dy=8mm, dz=5mm

Reference Value = 80.4 V/m; Power Drift = 0.024 dB

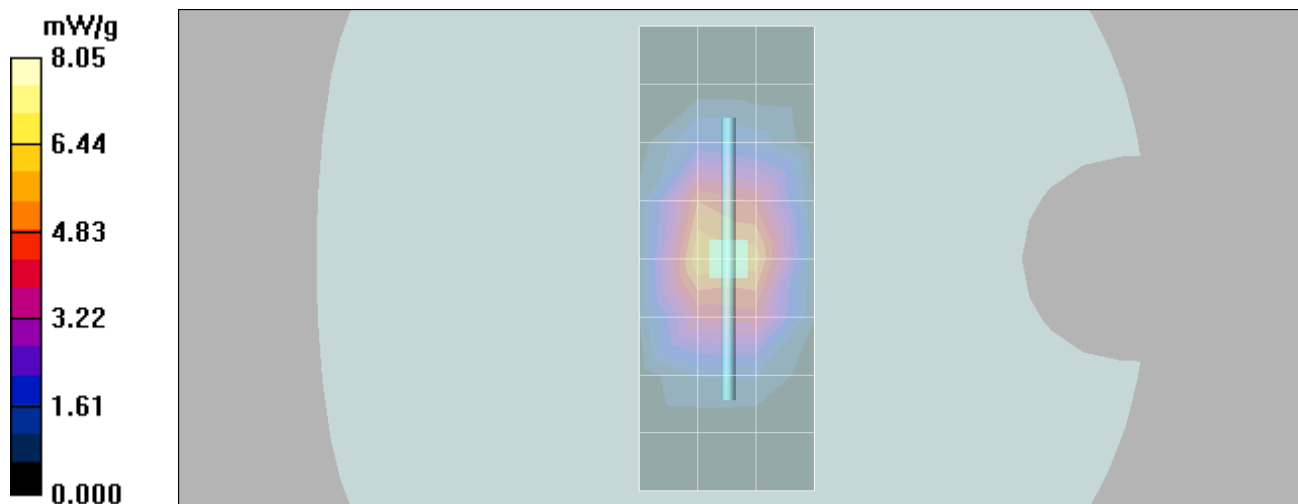
Peak SAR (extrapolated) = 12.4 W/kg

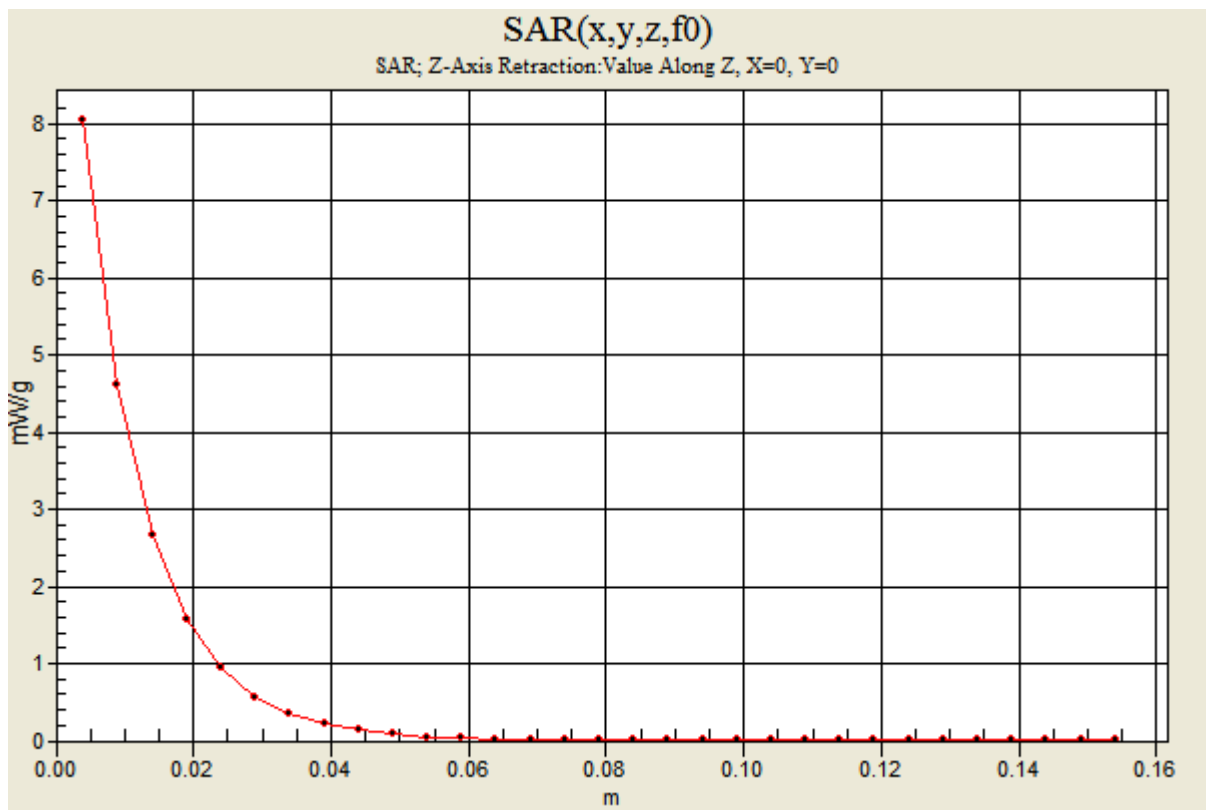
**SAR(1 g) = 7.13 mW/g; SAR(10 g) = 3.81 mW/g**

Maximum value of SAR (measured) = 7.71 mW/g

### Daily SPC Check/Z-Axis Retraction (1x1x31): Measurement grid: dx=20mm, dy=20mm, dz=5mm

Maximum value of SAR (measured) = 8.05 mW/g





## Test Laboratory: Motorola 0908'2008\_2450MHz\_Good -4.9%

Procedure Notes: 2450 MHz System Performance Check / Dipole Sn# 767 PM1 Power = 200 mW

Sim.Temp@meas = 21.7C Sim.Temp@SPC = 21.5C Room Temp @ SPC = 21.4C

Communication System: CW - Dipole; Frequency: 2450 MHz; Channel Number: 11; Duty Cycle: 1:1

Medium: VALIDATION Only; Medium parameters used:  $f = 2450$  MHz;  $\sigma = 1.88$  mho/m;  $\epsilon_r = 37.7$ ;  $\rho = 1000$  kg/m<sup>3</sup>

DASY4 Configuration:

- Probe: ET3DV6 - SN1502; ConvF(4.64, 4.64, 4.64); Calibrated: 5/19/2008
- Sensor-Surface: 4mm (Mechanical Surface Detection)
- Electronics: DAE4 Sn656; Calibrated: 5/19/2008
- Phantom: PCS-9\_Glycol SAM (extended range), Rev.1 (25-Mar-05); Type: SAM v4.0; Serial: TP-1134;
- Measurement SW: DASY4, V4.7 Build 71; Postprocessing SW: SEMCAD, V1.8 Build 184

### Daily SPC Check/Dipole Area Scan (4x9x1):

Measurement grid: dx=15mm, dy=15mm

Maximum value of SAR (measured) = 8.70 mW/g

### Daily SPC Check/0-Degree, 5x5x7 Cube (5x5x7)/Cube 0: Measurement grid: dx=8mm, dy=8mm, dz=5mm

Reference Value = 83.6 V/m; Power Drift = -0.022 dB

Peak SAR (extrapolated) = 24.1 W/kg

**SAR(1 g) = 10.7 mW/g; SAR(10 g) = 4.95 mW/g**

Maximum value of SAR (measured) = 11.9 mW/g

### Daily SPC Check/90-Degree 5x5x7 Cube (5x5x7)/Cube 0:

Measurement grid: dx=8mm, dy=8mm, dz=5mm

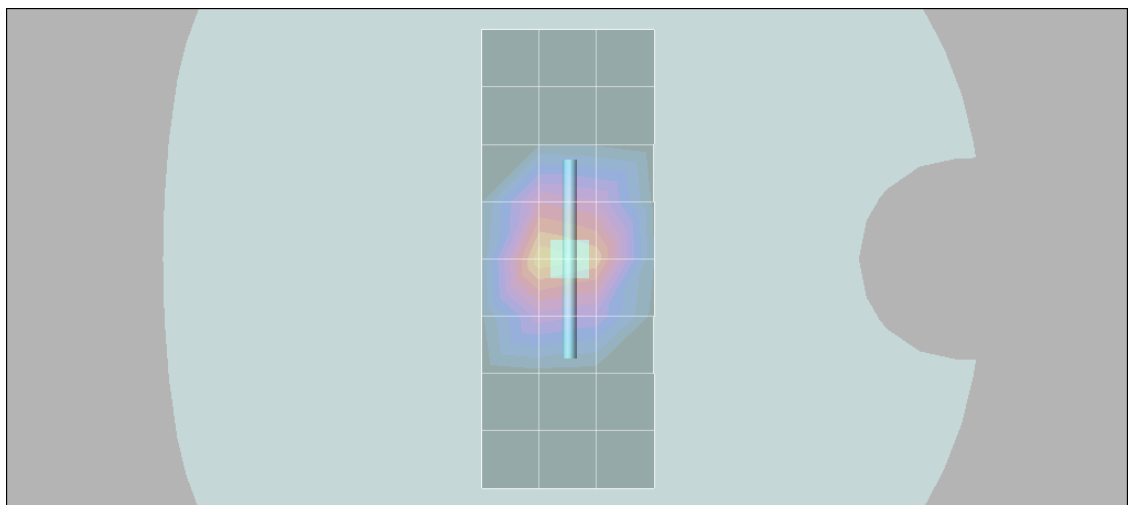
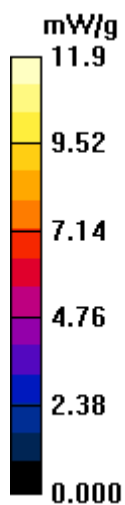
Reference Value = 83.6 V/m; Power Drift = -0.022 dB

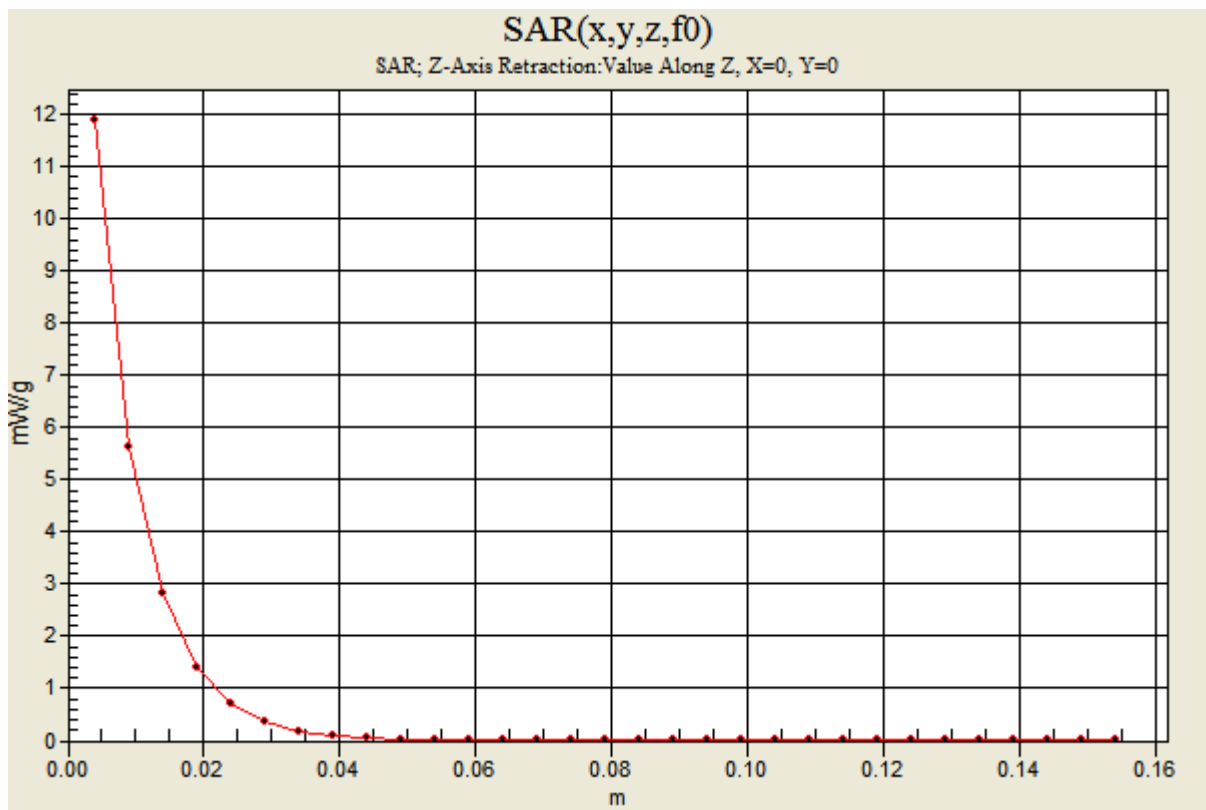
Peak SAR (extrapolated) = 24.3 W/kg

**SAR(1 g) = 10.8 mW/g; SAR(10 g) = 4.98 mW/g**

Maximum value of SAR (measured) = 11.8 mW/g

### Daily SPC Check/Z-Axis Retraction (1x1x31): Measurement grid: dx=20mm, dy=20mm, dz=5mm





**Appendix 2**

**SAR distribution plots for Phantom Head Adjacent Use**

## Test Laboratory: Motorola CDMA800 Cheek

### A0000002C66591;

Procedure Notes: Pwr Step: Always Up(OTA) Antenna Position: Internal

Battery Model #: SNN5782A BT60; DEVICE POSITION (cheek or rotated): Cheek

Communication System: CDMA 835; Frequency: 824.7 MHz; Channel Number: 1013; Duty Cycle: 1:1

Medium: Low Freq Head; Medium parameters used:  $f = 835$  MHz;  $\sigma = 0.92$  mho/m;  $\epsilon_r = 41.9$ ;  $\rho = 1000$  kg/m<sup>3</sup>

### DASY4 Configuration:

- Probe: ET3DV6 - SN1502; ConvF(6.2, 6.2, 6.2); Calibrated: 5/19/2008
- Sensor-Surface: 4mm (Mechanical Surface Detection)
- Electronics: DAE4 Sn656; Calibrated: 5/19/2008
- Phantom: PCS-9\_Sugar SAM (extended range), Rev.1 (25-Mar-05); Type: SAM v4.0; Serial: TP- 1129;
- Measurement SW: DASY4, V4.7 Build 71; Postprocessing SW: SEMCAD, V1.8 Build 184

### Left Head Template/Area Scan - Normal (10mm) (10x25x1):

Measurement grid: dx=10mm, dy=10mm

Maximum value of SAR (measured) = 0.953 mW/g

### Left Head Template/5x5x7 Zoom Scan (<=3GHz) (5x5x7)/Cube 0:

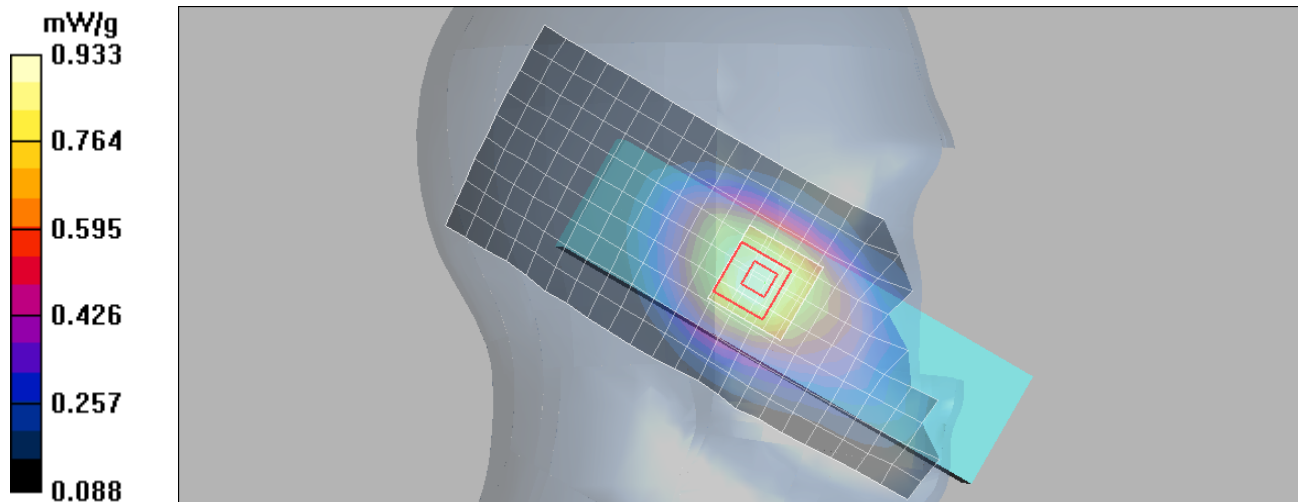
Measurement grid: dx=8mm, dy=8mm, dz=5mm

Reference Value = 33.3 V/m; Power Drift = -0.170 dB

Peak SAR (extrapolated) = 1.12 W/kg

**SAR(1 g) = 0.888 mW/g; SAR(10 g) = 0.661 mW/g**

Maximum value of SAR (measured) = 0.933 mW/g



## Test Laboratory: Motorola CDMA800 Tilted

### A0000002C66591;

Procedure Notes: Pwr Step: Always Up(OTA) Antenna Position: Internal

Battery Model #: SNN5782A BT60; DEVICE POSITION (cheek or rotated): Rotated

Communication System: CDMA 835; Frequency: 836.52 MHz; Channel Number: 384; Duty Cycle: 1:1

Medium: Low Freq Head; Medium parameters used:  $f = 835$  MHz;  $\sigma = 0.92$  mho/m;  $\epsilon_r = 41.9$ ;  $\rho = 1000$  kg/m<sup>3</sup>

### DASY4 Configuration:

- Probe: ET3DV6 - SN1502; ConvF(6.2, 6.2, 6.2); Calibrated: 5/19/2008
- Sensor-Surface: 4mm (Mechanical Surface Detection)
- Electronics: DAE4 Sn656; Calibrated: 5/19/2008
- Phantom: PCS-9\_Sugar SAM (extended range), Rev.1 (25-Mar-05); Type: SAM v4.0; Serial: TP- 1129;
- Measurement SW: DASY4, V4.7 Build 71; Postprocessing SW: SEMCAD, V1.8 Build 184

### Left Head Template/Area Scan - Normal (10mm) (10x25x1):

Measurement grid: dx=10mm, dy=10mm

Maximum value of SAR (measured) = 0.379 mW/g

### Left Head Template/5x5x7 Zoom Scan (<=3GHz) (5x5x7)/Cube 0:

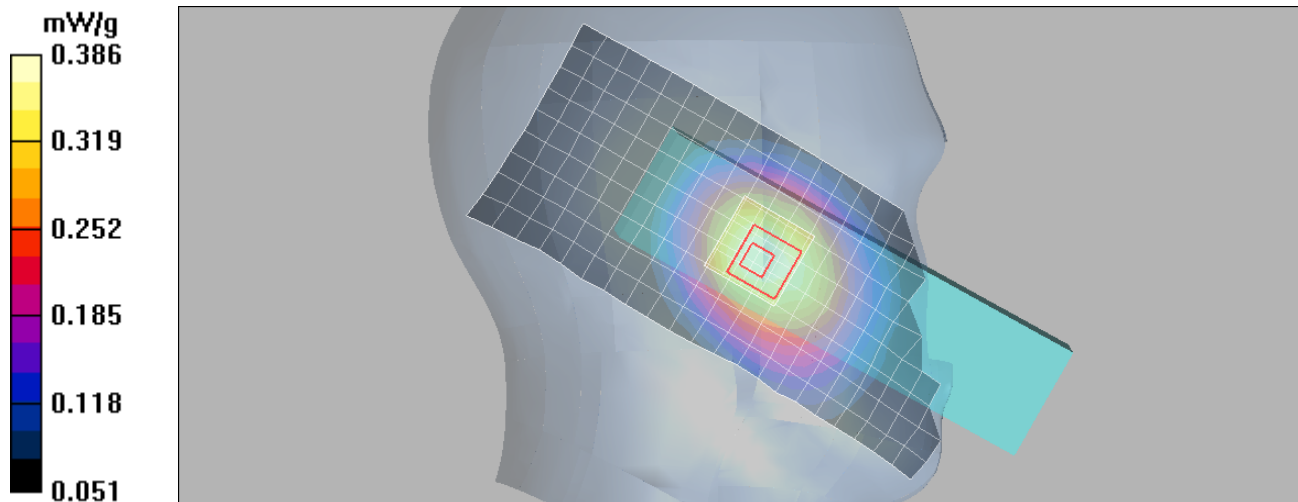
Measurement grid: dx=8mm, dy=8mm, dz=5mm

Reference Value = 21.5 V/m; Power Drift = -0.173 dB

Peak SAR (extrapolated) = 0.440 W/kg

**SAR(1 g) = 0.371 mW/g; SAR(10 g) = 0.283 mW/g**

Maximum value of SAR (measured) = 0.386 mW/g



## Test Laboratory: Motorola CDMA1700 Cheek

### A0000002C66591;

Procedure Notes: Pwr Step: All up(OTA) Antenna Position: Internal

Battery Model #: SNN5813A; DEVICE POSITION (cheek or rotated): Cheek

Communication System: CDMA 1700; Frequency: 1732.5 MHz; Channel Number: 450; Duty Cycle: 1:1

Medium: Regular Glycol Head 1730; Medium parameters used:  $f = 1730$  MHz;  $\sigma = 1.31$  mho/m;  $\epsilon_r = 39.3$ ;  $\rho = 1000$  kg/m<sup>3</sup>

### DASY4 Configuration:

- Probe: ET3DV6 - SN1502; ConvF(5.34, 5.34, 5.34); Calibrated: 5/19/2008
- Sensor-Surface: 4mm (Mechanical Surface Detection)
- Electronics: DAE4 Sn656; Calibrated: 5/19/2008
- Phantom: PCS-9\_Glycol SAM (extended range), Rev.1 (25-Mar-05); Type: SAM v4.0; Serial: TP-1134;
- Measurement SW: DASY4, V4.7 Build 71; Postprocessing SW: SEMCAD, V1.8 Build 184

### Right Head Template/Area Scan - Normal (15mm) (7x17x1):

Measurement grid: dx=15mm, dy=15mm

Maximum value of SAR (measured) = 0.542 mW/g

### Right Head Template/5x5x7 Zoom Scan (<=3GHz) (5x5x7)/Cube 0:

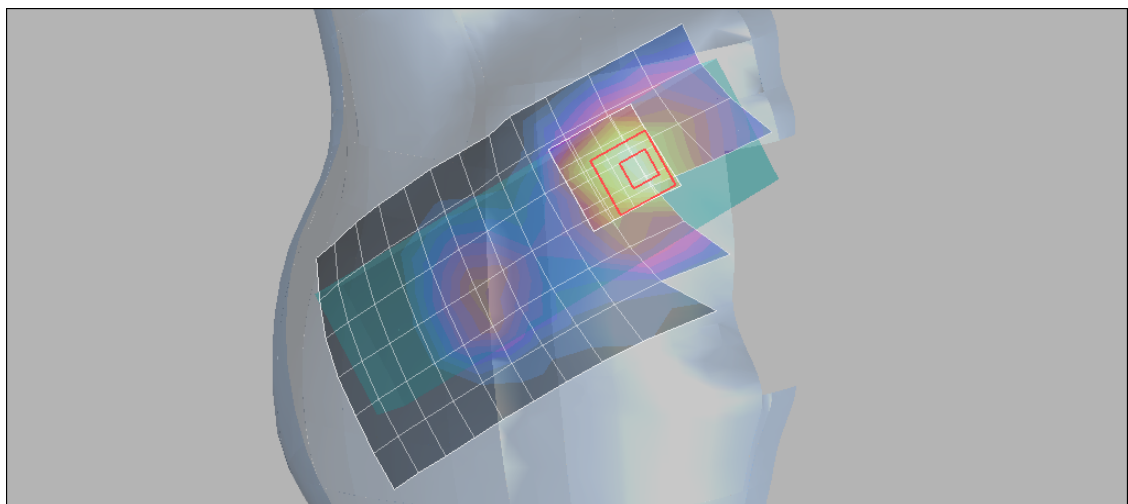
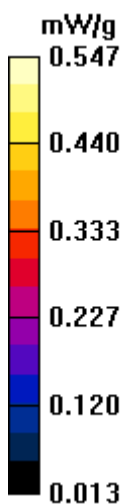
Measurement grid: dx=8mm, dy=8mm, dz=5mm

Reference Value = 20.7 V/m; Power Drift = -0.064 dB

Peak SAR (extrapolated) = 0.742 W/kg

**SAR(1 g) = 0.516 mW/g; SAR(10 g) = 0.344 mW/g**

Maximum value of SAR (measured) = 0.547 mW/g



## Test Laboratory: Motorola CDMA1700 Tilted

### A0000002C66591;

Procedure Notes: Pwr Step: All Up Bit(OTA) Antenna Position: Internal

Battery Model #: SNN5782A; DEVICE POSITION (cheek or rotated): Rotated

Communication System: CDMA 1700; Frequency: 1732.5 MHz; Channel Number: 450; Duty Cycle: 1:1

Medium: Regular Glycol Head 1730; Medium parameters used:  $f = 1730$  MHz;  $\sigma = 1.3$  mho/m;  $\epsilon_r = 40$ ;  $\rho = 1000$  kg/m<sup>3</sup>

### DASY4 Configuration:

- Probe: ET3DV6 - SN1502; ConvF(5.34, 5.34, 5.34); Calibrated: 5/19/2008
- Sensor-Surface: 4mm (Mechanical Surface Detection)
- Electronics: DAE4 Sn656; Calibrated: 5/19/2008
- Phantom: PCS-9\_Glycol SAM (extended range), Rev.1 (25-Mar-05); Type: SAM v4.0; Serial: TP-1134;
- Measurement SW: DASY4, V4.7 Build 71; Postprocessing SW: SEMCAD, V1.8 Build 184

### Right Head Template/Area Scan - Normal (15mm) (7x17x1):

Measurement grid: dx=15mm, dy=15mm

Maximum value of SAR (measured) = 0.290 mW/g

### Right Head Template/5x5x7 Zoom Scan (<=3GHz) (5x5x7)/Cube 0:

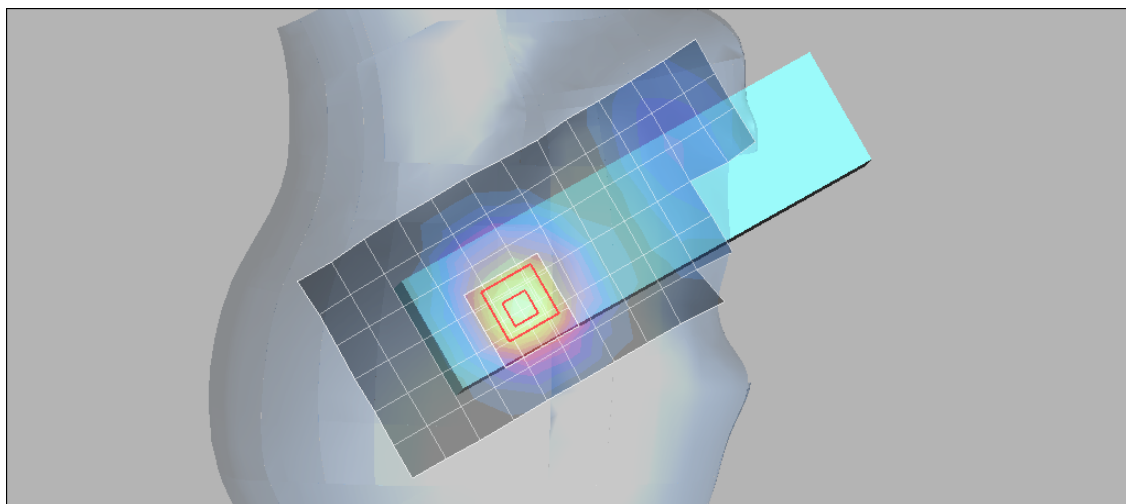
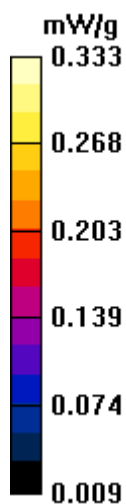
Measurement grid: dx=8mm, dy=8mm, dz=5mm

Reference Value = 15.9 V/m; Power Drift = 0.069 dB

Peak SAR (extrapolated) = 0.444 W/kg

**SAR(1 g) = 0.305 mW/g; SAR(10 g) = 0.196 mW/g**

Maximum value of SAR (measured) = 0.333 mW/g



## Test Laboratory: Motorola CDMA1900 Cheek

### A0000002C66591;

Procedure Notes: Pwr Step: All Up Bit(OTA) Antenna Position: Internal

Battery Model #: SNN5782A; DEVICE POSITION (cheek or rotated): Cheek

Communication System: CDMA 1900; Frequency: 1880 MHz; Channel Number: 600; Duty Cycle: 1:1

Medium: Regular Glycol Head 1750/1880; Medium parameters used:  $f = 1880$  MHz;  $\sigma = 1.45$  mho/m;  $\epsilon_r = 39.4$ ;  $\rho = 1000$  kg/m<sup>3</sup>

### DASY4 Configuration:

- Probe: ET3DV6 - SN1502; ConvF(5.34, 5.34, 5.34); Calibrated: 5/19/2008
- Sensor-Surface: 4mm (Mechanical Surface Detection)
- Electronics: DAE4 Sn656; Calibrated: 5/19/2008
- Phantom: PCS-9\_Glycol SAM (extended range), Rev.1 (25-Mar-05); Type: SAM v4.0; Serial: TP-1134;
- Measurement SW: DASY4, V4.7 Build 71; Postprocessing SW: SEMCAD, V1.8 Build 184

### Left Head Template/Area Scan - Normal (15mm) (7x17x1):

Measurement grid: dx=15mm, dy=15mm

Maximum value of SAR (measured) = 0.808 mW/g

### Left Head Template/5x5x7 Zoom Scan (<=3GHz) (5x5x7)/Cube 0:

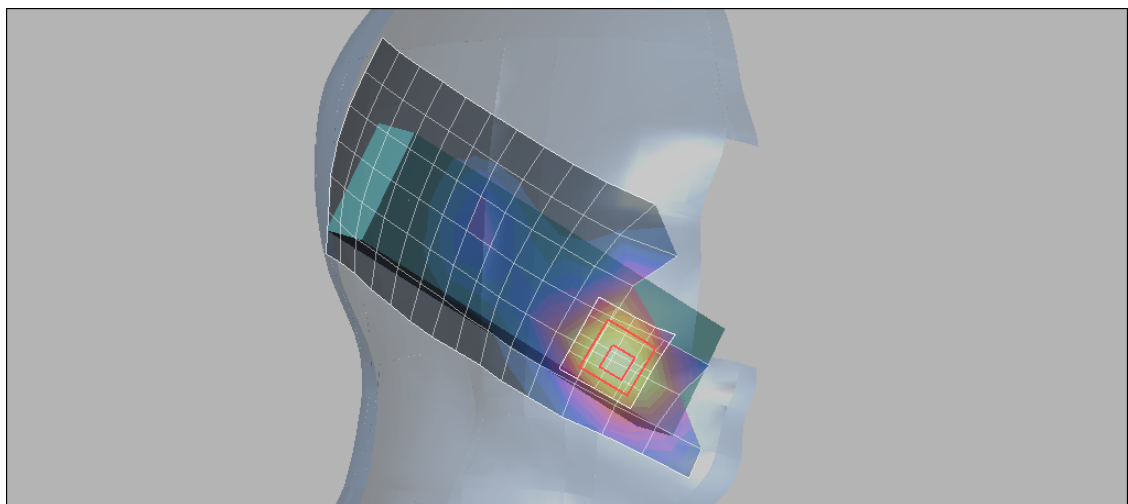
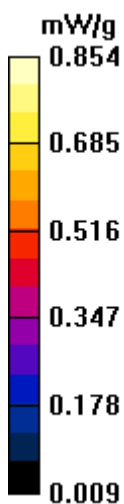
Measurement grid: dx=8mm, dy=8mm, dz=5mm

Reference Value = 24.4 V/m; Power Drift = -0.160 dB

Peak SAR (extrapolated) = 1.25 W/kg

**SAR(1 g) = 0.799 mW/g; SAR(10 g) = 0.493 mW/g**

Maximum value of SAR (measured) = 0.854 mW/g



## Test Laboratory: Motorola CDMA1900 Tilted

### A0000002C66591;

Procedure Notes: Pwr Step: All up(OTA) Antenna Position: Internal

Battery Model #: SNN5813A; DEVICE POSITION (cheek or rotated): Rotated

Communication System: CDMA 1900; Frequency: 1880 MHz; Channel Number: 600; Duty Cycle: 1:1

Medium: Regular Glycol Head 1750/1880; Medium parameters used:  $f = 1880$  MHz;  $\sigma = 1.46$  mho/m;  $\epsilon_r = 38.7$ ;  $\rho = 1000$  kg/m<sup>3</sup>

### DASY4 Configuration:

- Probe: ET3DV6 - SN1502; ConvF(5.34, 5.34, 5.34); Calibrated: 5/19/2008
- Sensor-Surface: 4mm (Mechanical Surface Detection)
- Electronics: DAE4 Sn656; Calibrated: 5/19/2008
- Phantom: PCS-9\_Glycol SAM (extended range), Rev.1 (25-Mar-05); Type: SAM v4.0; Serial: TP-1134;
- Measurement SW: DASY4, V4.7 Build 71; Postprocessing SW: SEMCAD, V1.8 Build 184

### Right Head Template/Area Scan - Normal (15mm) (7x17x1):

Measurement grid: dx=15mm, dy=15mm

Maximum value of SAR (measured) = 0.146 mW/g

### Right Head Template/5x5x7 Zoom Scan (<=3GHz) (5x5x7)/Cube 0:

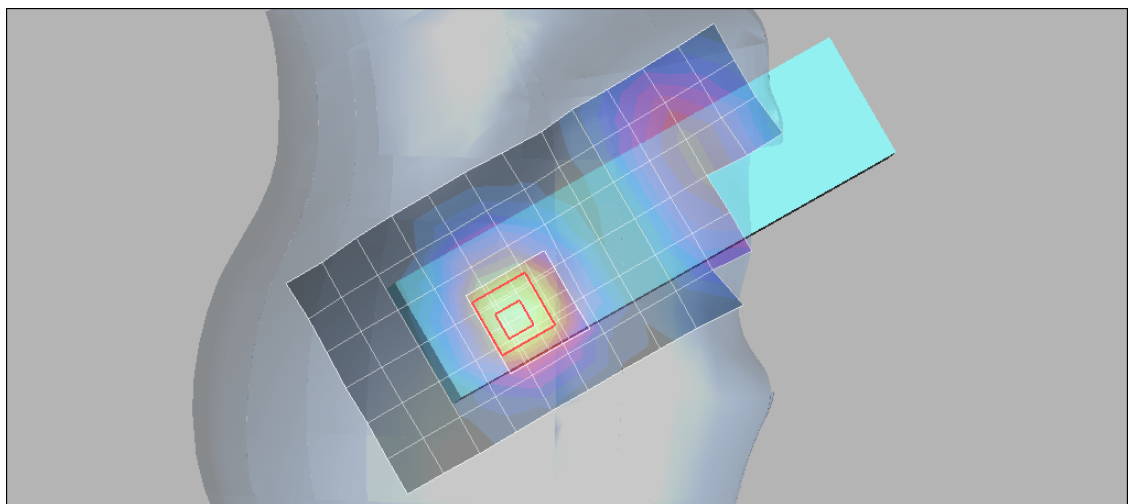
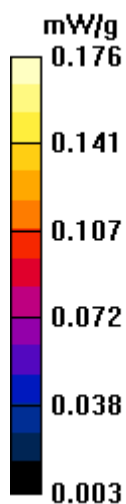
Measurement grid: dx=8mm, dy=8mm, dz=5mm

Reference Value = 10.9 V/m; Power Drift = 0.042 dB

Peak SAR (extrapolated) = 0.257 W/kg

**SAR(1 g) = 0.164 mW/g; SAR(10 g) = 0.101 mW/g**

Maximum value of SAR (measured) = 0.176 mW/g



**Appendix 3**

**SAR distribution plots for Body Worn Configuration**

## Test Laboratory: Motorola CDMA800 BodyWorn

### A0000002C66591;

Procedure Notes: Pwr Step: All up Bit(OTA) Antenna Position: Internal

Battery Model #: SNN5813A; Device Position: Back of phone 15mm away from flat phantom

Communication System: CDMA 835; Frequency: 836.52 MHz; Channel Number: 384; Duty Cycle: 1:1

Medium: Low Freq Body; Medium parameters used:  $f = 835$  MHz;  $\sigma = 0.99$  mho/m;  $\epsilon_r = 54.7$ ;  $\rho = 1000$  kg/m<sup>3</sup>

### DASY4 Configuration:

- Probe: ET3DV6 - SN1502; ConvF(6.08, 6.08, 6.08); Calibrated: 5/19/2008
- Sensor-Surface: 4mm (Mechanical Surface Detection)
- Electronics: DAE4 Sn656; Calibrated: 5/19/2008
- Phantom: R#9\_Section 1, Amy Twin, Rev2 (23-June-04); Type: Amy Twin Flat; Serial: n/a;
- Measurement SW: DASY4, V4.7 Build 71; Postprocessing SW: SEMCAD, V1.8 Build 184

### Amy Twin Phone Template/Area Scan - Normal Body (15mm) (13x7x1):

Measurement grid: dx=15mm, dy=15mm

Maximum value of SAR (measured) = 0.882 mW/g

### Amy Twin Phone Template/5x5x7 Zoom Scan (<=3GHz) (5x5x7)/Cube 0:

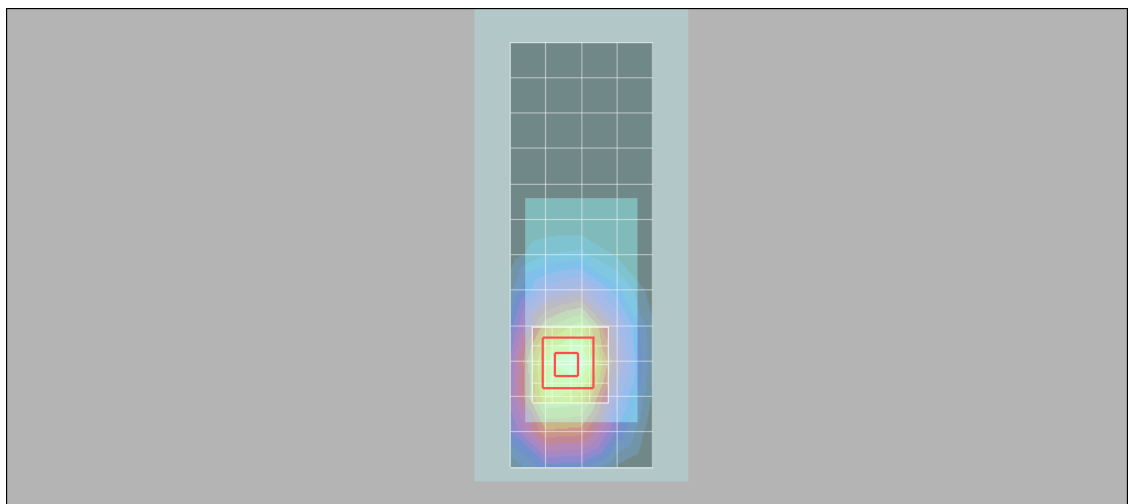
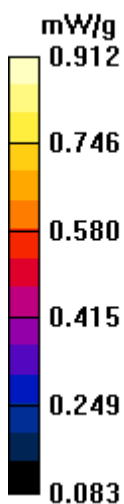
Measurement grid: dx=8mm, dy=8mm, dz=5mm

Reference Value = 29.5 V/m; Power Drift = -0.106 dB

Peak SAR (extrapolated) = 1.10 W/kg

**SAR(1 g) = 0.850 mW/g; SAR(10 g) = 0.594 mW/g**

Maximum value of SAR (measured) = 0.912 mW/g



## Test Laboratory: Motorola CDMA1700 BodyWorn

### A0000002C66591;

Procedure Notes: Pwr Step: All up Bit(OTA) Antenna Position: Internal

Battery Model #: SNN5826A; Device Position: Back of phone 15mm away from flat phantom

Communication System: CDMA 1700; Frequency: 1732.5 MHz; Channel Number: 450; Duty Cycle: 1:1

Medium: Regular Glycol Body 1730; Medium parameters used:  $f = 1730$  MHz;  $\sigma = 1.41$  mho/m;  $\epsilon_r = 53.3$ ;  $\rho = 1000$  kg/m<sup>3</sup>

### DASY4 Configuration:

- Probe: ET3DV6 - SN1502; ConvF(4.85, 4.85, 4.85); Calibrated: 5/19/2008
- Sensor-Surface: 4mm (Mechanical Surface Detection)
- Electronics: DAE4 Sn656; Calibrated: 5/19/2008
- Phantom: R#9\_ Section 2, Amy Twin, Rev2 (23-June-04); Type: Amy Twin Flat; Serial: n/a;
- Measurement SW: DASY4, V4.7 Build 71; Postprocessing SW: SEMCAD, V1.8 Build 184

### Amy Twin Phone Template/Area Scan - Normal Body (15mm) (13x7x1):

Measurement grid: dx=15mm, dy=15mm

Maximum value of SAR (measured) = 0.416 mW/g

### Amy Twin Phone Template/5x5x7 Zoom Scan (<=3GHz) (5x5x7)/Cube 0:

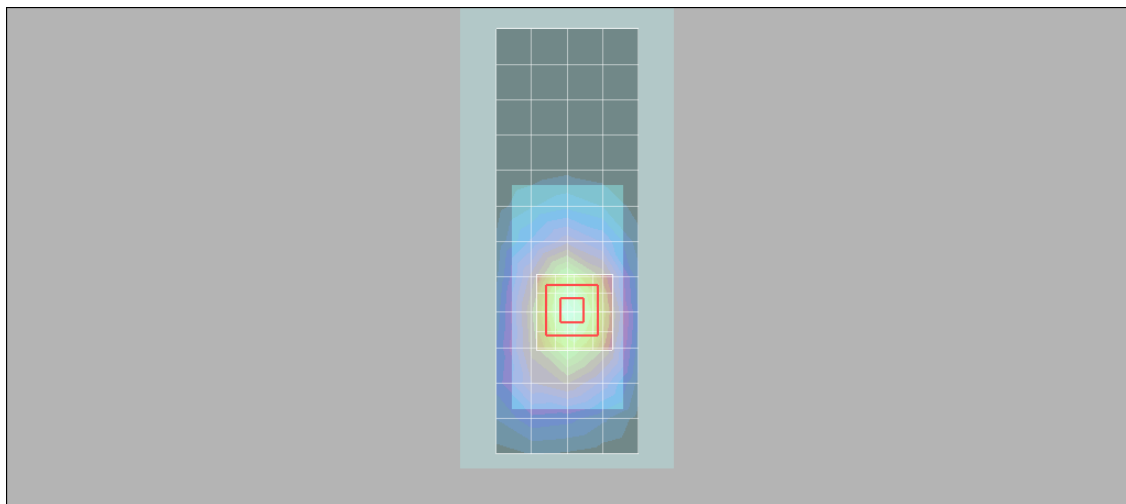
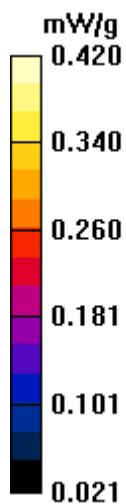
Measurement grid: dx=8mm, dy=8mm, dz=5mm

Reference Value = 18.1 V/m; Power Drift = -0.002 dB

Peak SAR (extrapolated) = 0.571 W/kg

**SAR(1 g) = 0.392 mW/g; SAR(10 g) = 0.257 mW/g**

Maximum value of SAR (measured) = 0.420 mW/g



## Test Laboratory: Motorola CDMA1900 BodyWorn

### A0000002C66591;

Procedure Notes: Pwr Step: All up(OTA) Antenna Position: Internal

Battery Model #: SNN 5813A; Device Position: Back of phone 15mm away from the flat phantom

Communication System: CDMA 1900; Frequency: 1880 MHz; Channel Number: 600; Duty Cycle: 1:1

Medium: Regular Glycol Body 1750/1880; Medium parameters used:  $f = 1880$  MHz;  $\sigma = 1.59$  mho/m;  $\epsilon_r = 52.6$ ;  $\rho = 1000$  kg/m<sup>3</sup>

### DASY4 Configuration:

- Probe: ET3DV6 - SN1502; ConvF(4.85, 4.85, 4.85); Calibrated: 5/19/2008
- Sensor-Surface: 4mm (Mechanical Surface Detection)
- Electronics: DAE4 Sn656; Calibrated: 5/19/2008
- Phantom: R#9\_ Section 2, Amy Twin, Rev2 (23-June-04); Type: Amy Twin Flat; Serial: n/a;
- Measurement SW: DASY4, V4.7 Build 71; Postprocessing SW: SEMCAD, V1.8 Build 184

### Amy Twin Phone Template/Area Scan - Normal Body (15mm) (13x7x1):

Measurement grid: dx=15mm, dy=15mm

Maximum value of SAR (measured) = 0.372 mW/g

### Amy Twin Phone Template/5x5x7 Zoom Scan (<=3GHz) (5x5x7)/Cube 0:

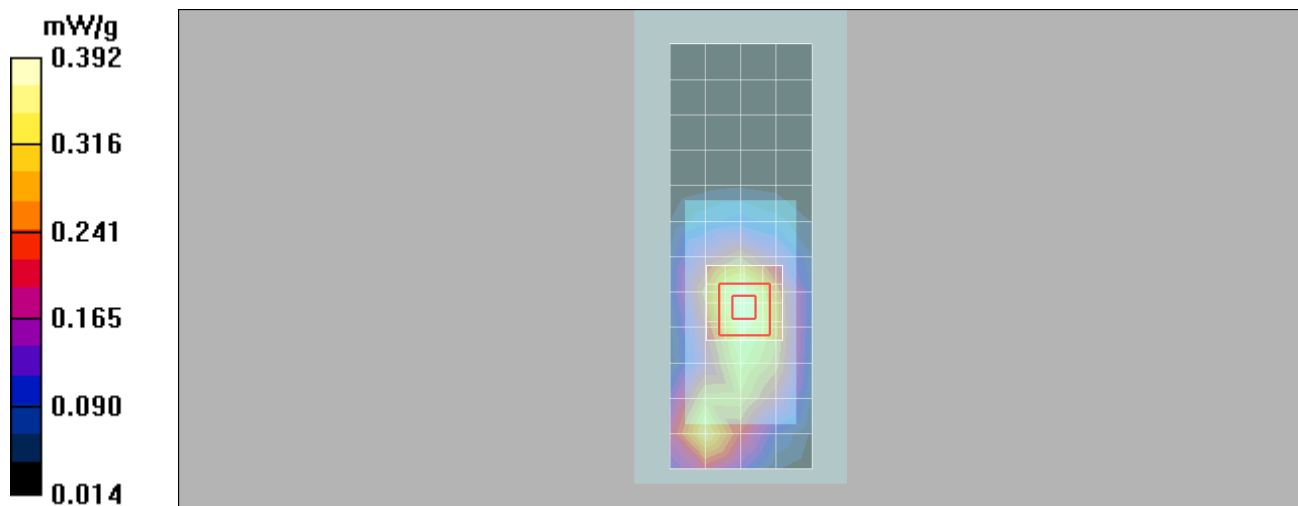
Measurement grid: dx=8mm, dy=8mm, dz=5mm

Reference Value = 16.6 V/m; Power Drift = -0.001 dB

Peak SAR (extrapolated) = 0.563 W/kg

**SAR(1 g) = 0.367 mW/g; SAR(10 g) = 0.237 mW/g**

Maximum value of SAR (measured) = 0.392 mW/g



## Test Laboratory: Motorola Bluetooth2450 BodyWorn

### A0000002C66591;

Procedure Notes: Pwr Step: All up Bit(OTA) Antenna Position: Internal

Battery Model #: SNN5813A; Device Position: Back of phone 15mm away from the flat phantom

Communication System: Bluetooth; Frequency: 2441 MHz; Channel Number: 39; Duty Cycle: 1:1

Medium: 2450 Glycol Body; Medium parameters used:  $f = 2450$  MHz;  $\sigma = 2.01$  mho/m;  $\epsilon_r = 48.7$ ;  $\rho = 1000$  kg/m<sup>3</sup>

DASY4 Configuration:

- Probe: ET3DV6 - SN1502; ConvF(4.16, 4.16, 4.16); Calibrated: 5/19/2008
- Sensor-Surface: 4mm (Mechanical Surface Detection)
- Electronics: DAE4 Sn656; Calibrated: 5/19/2008
- Phantom: R#9\_Section 2, Amy Twin, Rev2 (23-June-04); Type: Amy Twin Flat; Serial: n/a;
- Measurement SW: DASY4, V4.7 Build 71; Postprocessing SW: SEMCAD, V1.8 Build 184

### Amy Twin Phone Template/Area Scan - Normal Body (10mm) (19x10x1):

Measurement grid: dx=10mm, dy=10mm

Maximum value of SAR (measured) = 0.002 mW/g

### Amy Twin Phone Template/5x5x7 Zoom Scan (<=3GHz) (5x5x7)/Cube 0:

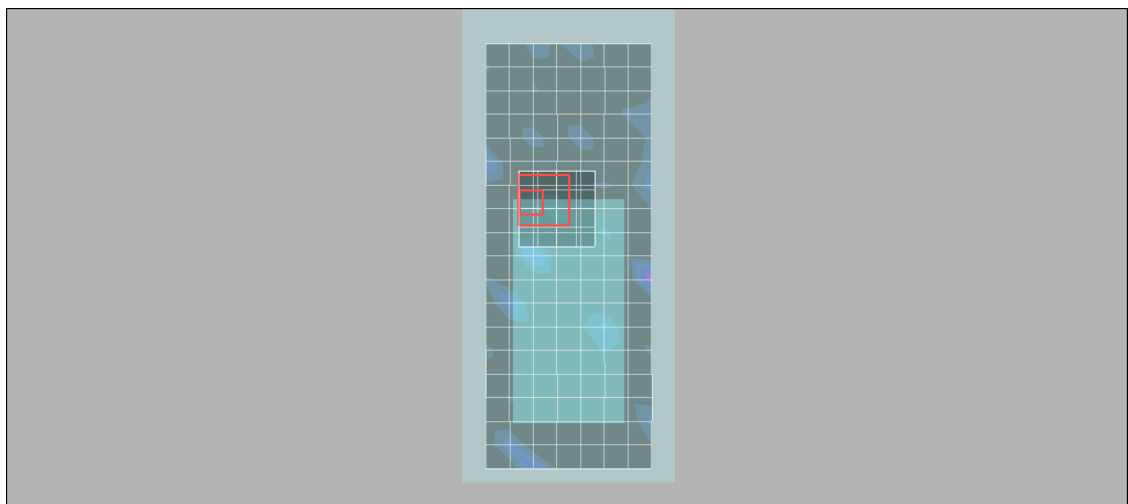
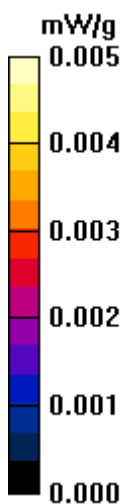
Measurement grid: dx=8mm, dy=8mm, dz=5mm

Reference Value = 0.411 V/m; Power Drift = -2.36 dB

Peak SAR (extrapolated) = 0.005 W/kg

**SAR(1 g) = 0.000173 mW/g; SAR(10 g) = 3.44e-005 mW/g**

Maximum value of SAR (measured) = 0.005 mW/g



**Appendix 4**

**Probe Calibration Certificate**



Accredited by the Swiss Accreditation Service (SAS)  
The Swiss Accreditation Service is one of the signatories to the EA  
Multilateral Agreement for the recognition of calibration certificates

Accreditation No.: **SCS 108**

Client **Motorola Korea**

Certificate No. **ET3-1502\_May08**

**CALIBRATION CERTIFICATE**

Object **ET3DV6 - SN:1502**

Calibration procedure(s) **QA CAL-01.v6 and QA CAL-23.v3  
Calibration procedure for dosimetric E-field probes**

Calibration date: **May 19, 2008**

Condition of the calibrated item **In Tolerance**

This calibration certificate documents the traceability to national standards, which realize the physical units of measurements (SI).  
The measurements and the uncertainties with confidence probability are given on the following pages and are part of the certificate.

All calibrations have been conducted in the closed laboratory facility: environment temperature (22 ± 3)°C and humidity < 70%.

Calibration Equipment used (M&TE critical for calibration)

Primary Standards	ID #	Cal Date (Certificate No.)	Scheduled Calibration
Power meter E4419B	GB41293874	1-Apr-08 (No. 217-00788)	Apr-09
Power sensor E4412A	MY41495277	1-Apr-08 (No. 217-00788)	Apr-09
Power sensor E4412A	MY41498087	1-Apr-08 (No. 217-00788)	Apr-09
Reference 3 dB Attenuator	SN: S5054 (3c)	8-Aug-07 (No. 217-00719)	Aug-08
Reference 20 dB Attenuator	SN: S5086 (20b)	31-Mar-08 (No. 217-00787)	Apr-09
Reference 30 dB Attenuator	SN: S5129 (30b)	8-Aug-07 (No. 217-00720)	Aug-08
Reference Probe ES3DV2	SN: 3013	2-Jan-08 (No. ES3-3013_Jan08)	Jan-09
DAE4	SN: 660	3-Sep-07 (No. DAE4-660_Sep07)	Sep-08

Secondary Standards	ID #	Check Date (in house)	Scheduled Check
RF generator HP 8648C	US3642U01700	4-Aug-99 (in house check Oct-07)	In house check: Oct-09
Network Analyzer HP 8753E	US37390585	18-Oct-01 (in house check Oct-07)	In house check: Oct-08

	Name	Function	Signature
Calibrated by:	Katja Pokovic	Technical Manager	
Approved by:	Niels Kuster	Quality Manager	

Issued: May 20, 2008

This calibration certificate shall not be reproduced except in full without written approval of the laboratory.



Accredited by the Swiss Accreditation Service (SAS)

The Swiss Accreditation Service is one of the signatories to the EA  
Multilateral Agreement for the recognition of calibration certificates

Accreditation No.: **SCS 108**

### Glossary:

TSL	tissue simulating liquid
NORM <sub>x,y,z</sub>	sensitivity in free space
ConvF	sensitivity in TSL / NORM <sub>x,y,z</sub>
DCP	diode compression point
Polarization $\varphi$	$\varphi$ rotation around probe axis
Polarization $\vartheta$	$\vartheta$ rotation around an axis that is in the plane normal to probe axis (at measurement center), i.e., $\vartheta = 0$ is normal to probe axis

### Calibration is Performed According to the Following Standards:

- IEEE Std 1528-2003, "IEEE Recommended Practice for Determining the Peak Spatial-Averaged Specific Absorption Rate (SAR) in the Human Head from Wireless Communications Devices: Measurement Techniques", December 2003
- IEC 62209-1, "Procedure to measure the Specific Absorption Rate (SAR) for hand-held devices used in close proximity to the ear (frequency range of 300 MHz to 3 GHz)", February 2005

### Methods Applied and Interpretation of Parameters:

- NORM<sub>x,y,z</sub>**: Assessed for E-field polarization  $\vartheta = 0$  ( $f \leq 900$  MHz in TEM-cell;  $f > 1800$  MHz: R22 waveguide). NORM<sub>x,y,z</sub> are only intermediate values, i.e., the uncertainties of NORM<sub>x,y,z</sub> does not effect the E<sup>2</sup>-field uncertainty inside TSL (see below *ConvF*).
- NORM(f)<sub>x,y,z</sub>** = NORM<sub>x,y,z</sub> \* *frequency\_response* (see Frequency Response Chart). This linearization is implemented in DASY4 software versions later than 4.2. The uncertainty of the frequency response is included in the stated uncertainty of *ConvF*.
- DCP<sub>x,y,z</sub>**: DCP are numerical linearization parameters assessed based on the data of power sweep (no uncertainty required). DCP does not depend on frequency nor media.
- ConvF and Boundary Effect Parameters**: Assessed in flat phantom using E-field (or Temperature Transfer Standard for  $f \leq 800$  MHz) and inside waveguide using analytical field distributions based on power measurements for  $f > 800$  MHz. The same setups are used for assessment of the parameters applied for boundary compensation (alpha, depth) of which typical uncertainty values are given. These parameters are used in DASY4 software to improve probe accuracy close to the boundary. The sensitivity in TSL corresponds to NORM<sub>x,y,z</sub> \* *ConvF* whereby the uncertainty corresponds to that given for *ConvF*. A frequency dependent *ConvF* is used in DASY version 4.4 and higher which allows extending the validity from  $\pm 50$  MHz to  $\pm 100$  MHz.
- Spherical isotropy (3D deviation from isotropy)**: in a field of low gradients realized using a flat phantom exposed by a patch antenna.
- Sensor Offset**: The sensor offset corresponds to the offset of virtual measurement center from the probe tip (on probe axis). No tolerance required.

# Probe ET3DV6

## SN:1502

Manufactured:	October 24, 1999
Last calibrated:	July 11, 2007
Recalibrated:	May 19, 2008

Calibrated for DASY Systems

(Note: non-compatible with DASY2 system!)

**DASY - Parameters of Probe: ET3DV6 SN:1502****Sensitivity in Free Space<sup>A</sup>****Diode Compression<sup>B</sup>**

NormX	1.74 ± 10.1%	$\mu\text{V}/(\text{V}/\text{m})^2$	DCP X	93 mV
NormY	1.86 ± 10.1%	$\mu\text{V}/(\text{V}/\text{m})^2$	DCP Y	92 mV
NormZ	1.82 ± 10.1%	$\mu\text{V}/(\text{V}/\text{m})^2$	DCP Z	90 mV

**Sensitivity in Tissue Simulating Liquid (Conversion Factors)**

Please see Page 8.

**Boundary Effect**

**TSL**                      **900 MHz**      **Typical SAR gradient: 5 % per mm**

Sensor Center to Phantom Surface Distance		<b>3.7 mm</b>	<b>4.7 mm</b>
SAR <sub>be</sub> [%]	Without Correction Algorithm	10.6	6.5
SAR <sub>be</sub> [%]	With Correction Algorithm	0.4	0.1

**TSL**                      **1810 MHz**      **Typical SAR gradient: 10 % per mm**

Sensor Center to Phantom Surface Distance		<b>3.7 mm</b>	<b>4.7 mm</b>
SAR <sub>be</sub> [%]	Without Correction Algorithm	11.3	7.0
SAR <sub>be</sub> [%]	With Correction Algorithm	0.5	0.3

**Sensor Offset**

Probe Tip to Sensor Center    **2.7 mm**

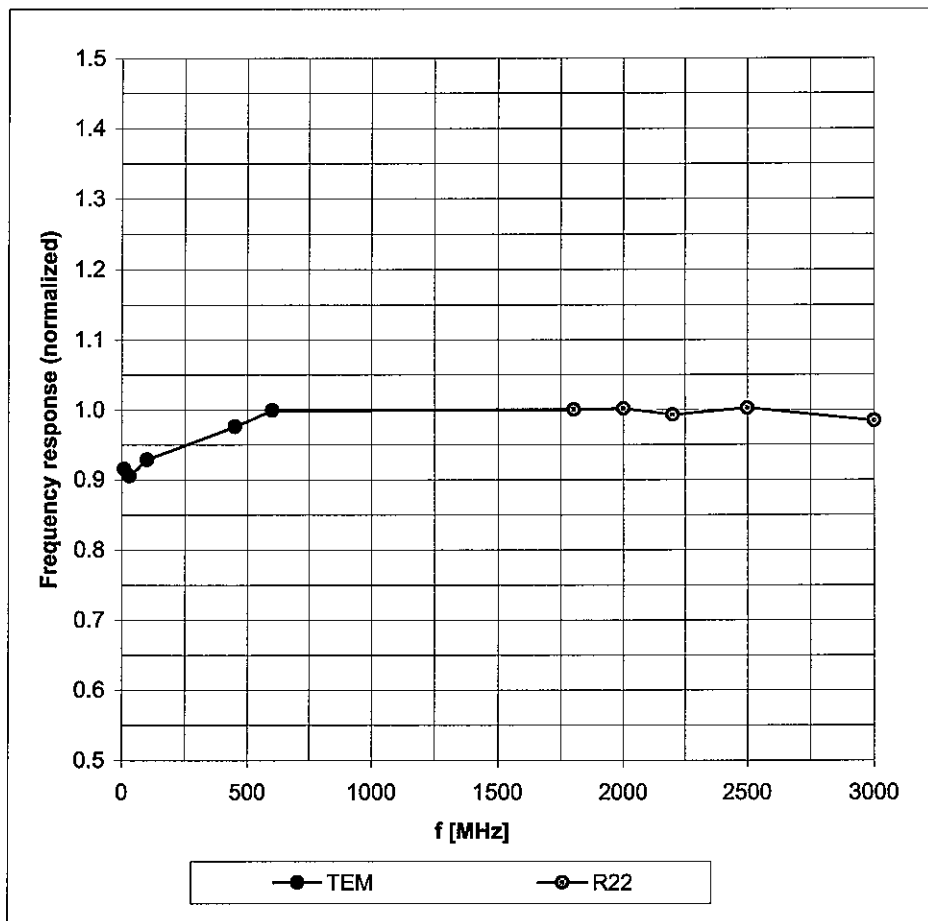
**The reported uncertainty of measurement is stated as the standard uncertainty of measurement multiplied by the coverage factor k=2, which for a normal distribution corresponds to a coverage probability of approximately 95%.**

<sup>A</sup> The uncertainties of NormX,Y,Z do not affect the E<sup>2</sup>-field uncertainty inside TSL (see Page 8).

<sup>B</sup> Numerical linearization parameter: uncertainty not required.

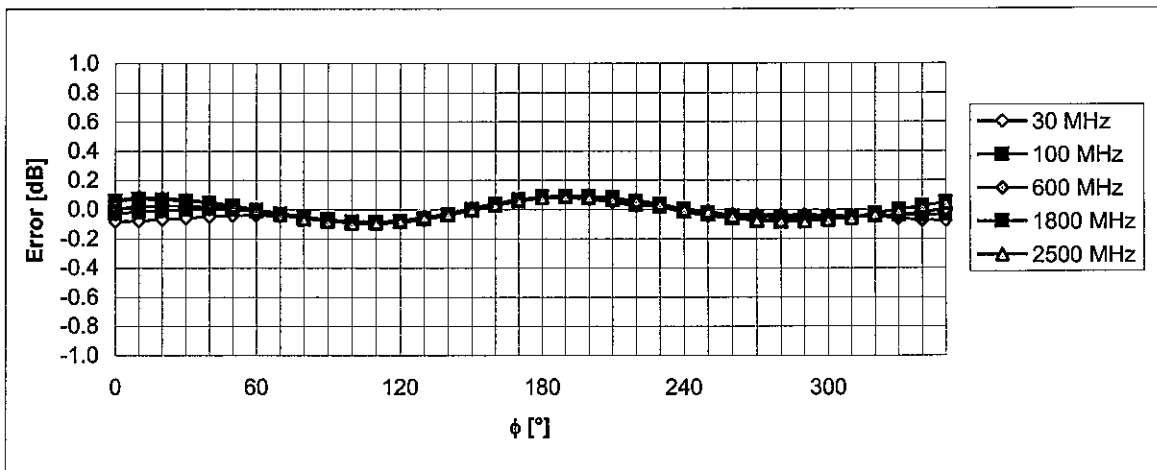
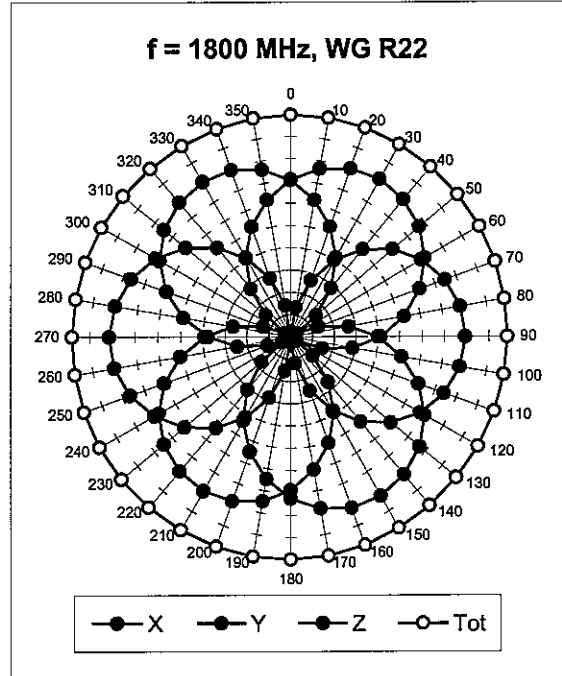
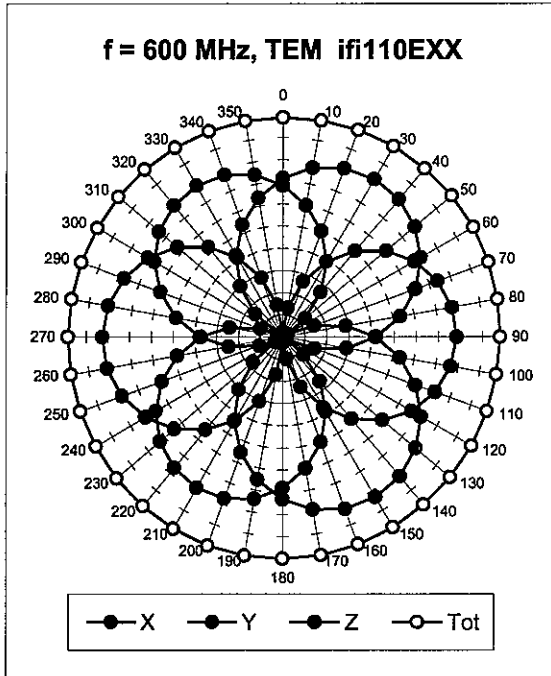
# Frequency Response of E-Field

(TEM-Cell:ifi110 EXX, Waveguide: R22)



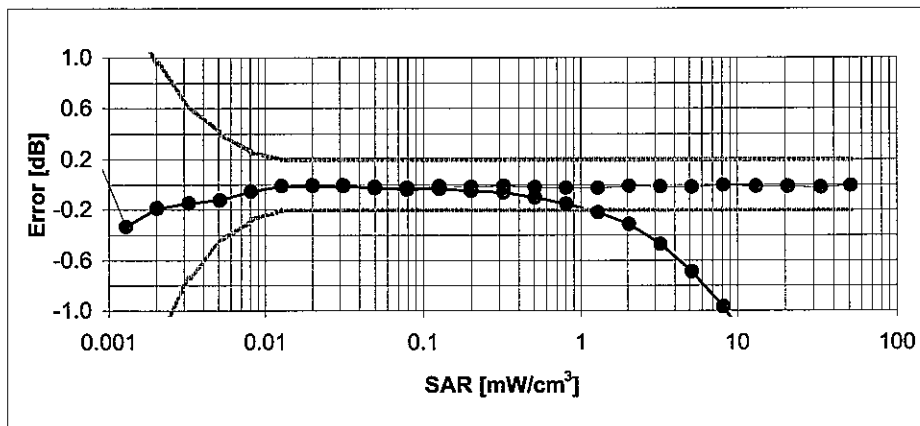
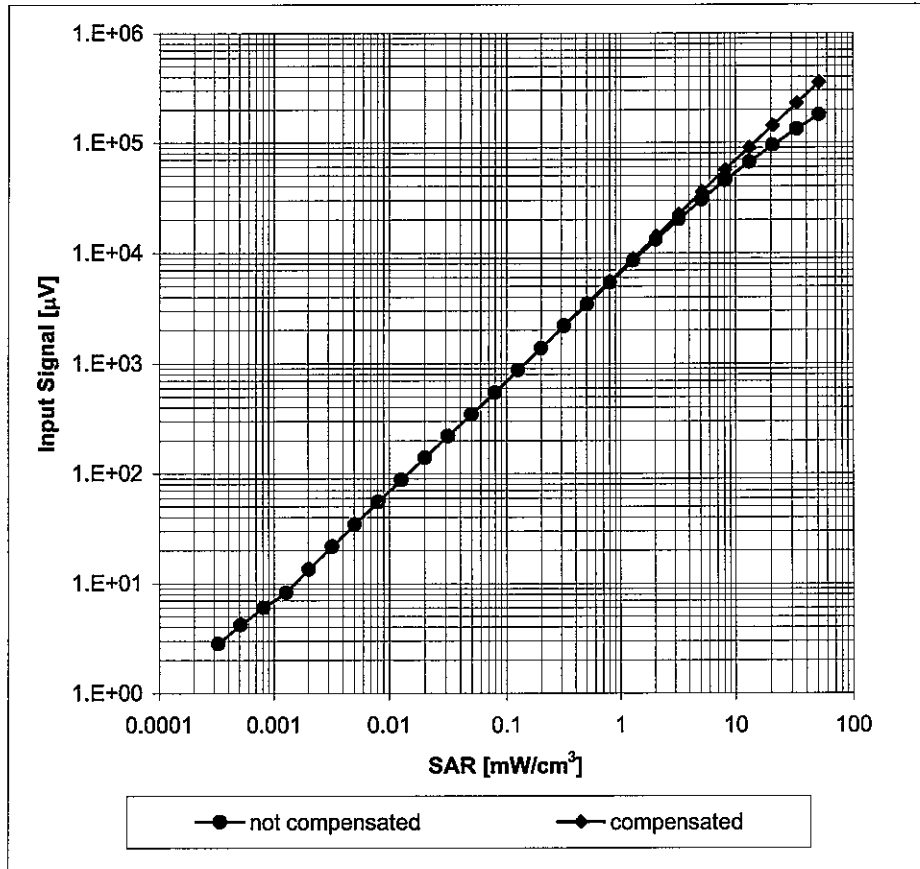
Uncertainty of Frequency Response of E-field:  $\pm 6.3\%$  (k=2)

### Receiving Pattern ( $\phi$ ), $\vartheta = 0^\circ$



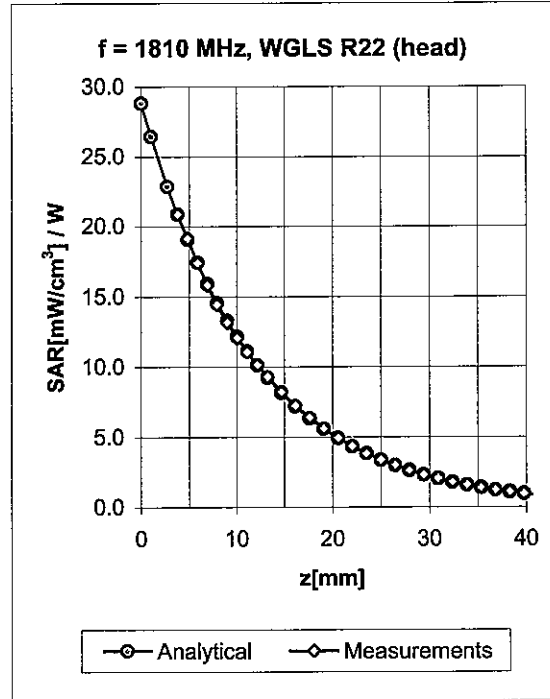
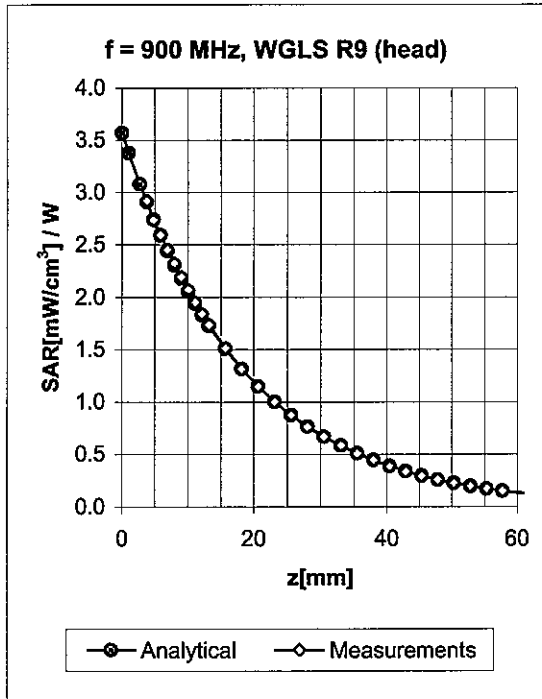
Uncertainty of Axial Isotropy Assessment:  $\pm 0.5\%$  ( $k=2$ )

### Dynamic Range $f(\text{SAR}_{\text{head}})$ (Waveguide R22, $f = 1800 \text{ MHz}$ )



Uncertainty of Linearity Assessment:  $\pm 0.6\%$  ( $k=2$ )

## Conversion Factor Assessment

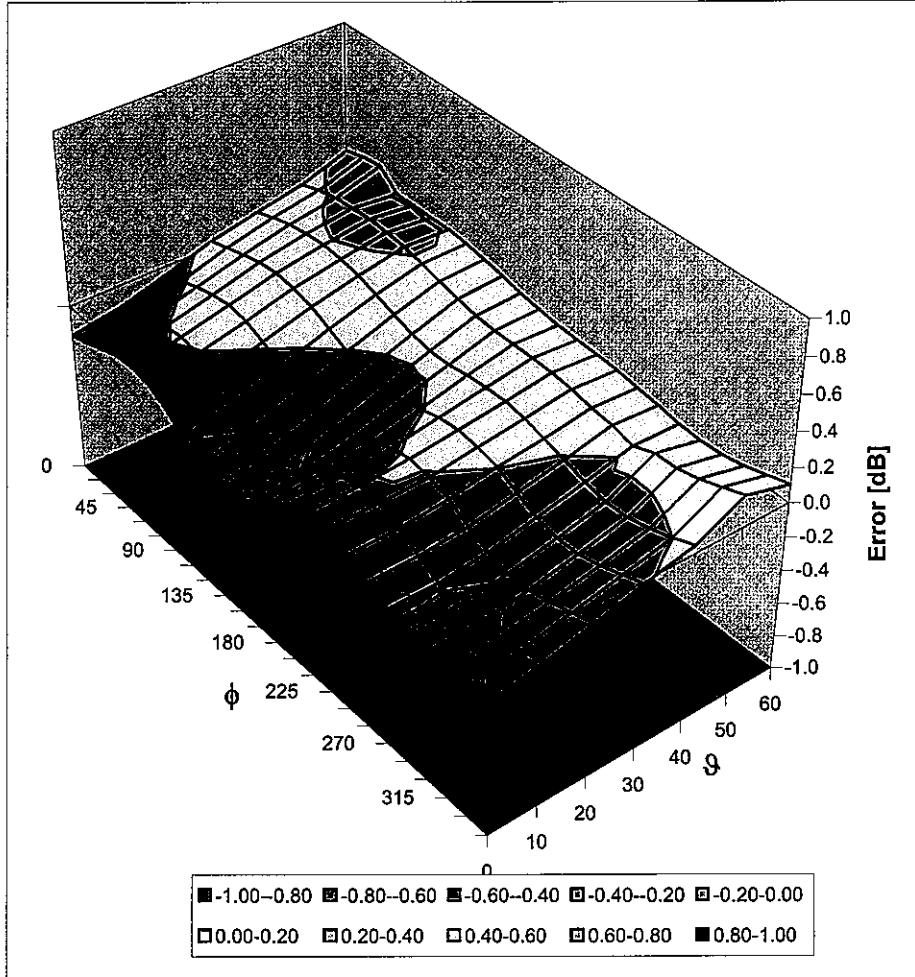


f [MHz]	Validity [MHz] <sup>c</sup>	TSL	Permittivity	Conductivity	Alpha	Depth	ConvF Uncertainty
900	± 50 / ± 100	Head	41.5 ± 5%	0.97 ± 5%	0.35	2.80	6.20 ± 11.0% (k=2)
1810	± 50 / ± 100	Head	40.0 ± 5%	1.40 ± 5%	0.45	2.55	5.34 ± 11.0% (k=2)
1950	± 50 / ± 100	Head	40.0 ± 5%	1.40 ± 5%	0.50	2.55	5.08 ± 11.0% (k=2)
2450	± 50 / ± 100	Head	39.2 ± 5%	1.80 ± 5%	0.48	2.30	4.64 ± 11.0% (k=2)
900	± 50 / ± 100	Body	55.0 ± 5%	1.05 ± 5%	0.32	2.99	6.08 ± 11.0% (k=2)
1810	± 50 / ± 100	Body	53.3 ± 5%	1.52 ± 5%	0.50	2.50	4.85 ± 11.0% (k=2)
1950	± 50 / ± 100	Body	53.3 ± 5%	1.52 ± 5%	0.50	2.50	4.77 ± 11.0% (k=2)
2450	± 50 / ± 100	Body	52.7 ± 5%	1.95 ± 5%	0.45	2.40	4.16 ± 11.0% (k=2)

<sup>c</sup> The validity of ± 100 MHz only applies for DASY v4.4 and higher (see Page 2). The uncertainty is the RSS of the ConvF uncertainty at calibration frequency and the uncertainty for the indicated frequency band.

### Deviation from Isotropy in HSL

Error ( $\phi$ ,  $\theta$ ),  $f = 900$  MHz



Uncertainty of Spherical Isotropy Assessment:  $\pm 2.6\%$  ( $k=2$ )

**Appendix 5**

**Measurement Uncertainty Budget**

MOTOROLA, INC. Portable Cellular Phone SAR Test Report Number: **22279-2F**

<i>a</i>	<i>b</i>	<i>c</i>	<i>d</i>	<i>e = f(d,k)</i>	<i>f</i>	<i>g</i>	<i>h = c x f / e</i>	<i>i = c x g / e</i>	<i>k</i>
Uncertainty Component	IEEE 1528 section	Tol. (± %)	Prob	Div.	<i>c<sub>i</sub></i>	<i>c<sub>i</sub></i> (10 g)	1 g	10 g	<i>v<sub>i</sub></i>
			Dist		(1 g)	(10 g)	<i>u<sub>i</sub></i> (±%)	<i>u<sub>i</sub></i> (±%)	
<b>Measurement System</b>									
Probe Calibration	E.2.1	5.9	N	1.00	1	1	5.9	5.9	∞
Axial Isotropy	E.2.2	4.7	R	1.73	0.707	0.707	1.9	1.9	∞
Hemispherical Isotropy	E.2.2	9.6	R	1.73	0.707	0.707	3.9	3.9	∞
Boundary Effect	E.2.3	1.0	R	1.73	1	1	0.6	0.6	∞
Linearity	E.2.4	4.7	R	1.73	1	1	2.7	2.7	∞
System Detection Limits	E.2.5	1.0	R	1.73	1	1	0.6	0.6	∞
Readout Electronics	E.2.6	0.3	N	1.00	1	1	0.3	0.3	∞
Response Time	E.2.7	1.1	R	1.73	1	1	0.6	0.6	∞
Integration Time	E.2.8	1.1	R	1.73	1	1	0.6	0.6	∞
RF Ambient Conditions - Noise	E.6.1	3.0	R	1.73	1	1	1.7	1.7	∞
RF Ambient Conditions - Reflections	E.6.1	0.0	R	1.73	1	1	0.0	0.0	∞
Probe Positioner Mech. Tolerance	E.6.2	0.4	R	1.73	1	1	0.2	0.2	∞
Probe Positioning w.r.t Phantom	E.6.3	1.4	R	1.73	1	1	0.8	0.8	∞
Max. SAR Evaluation (ext., int., avg.)	E.5	3.4	R	1.73	1	1	2.0	2.0	∞
<b>Test sample Related</b>									
Test Sample Positioning	E.4.2	3.2	N	1.00	1	1	3.2	3.2	29
Device Holder Uncertainty	E.4.1	4.0	N	1.00	1	1	4.0	4.0	8
SAR drift	6.6.2	5.0	R	1.73	1	1	2.9	2.9	∞
<b>Phantom and Tissue Parameters</b>									
Phantom Uncertainty	E.3.1	4.0	R	1.73	1	1	2.3	2.3	∞
Liquid Conductivity (target)	E.3.2	5.0	R	1.73	0.64	0.43	1.8	1.2	∞
Liquid Conductivity (measurement)	E.3.3	3.3	N	1.00	0.64	0.43	2.1	1.4	∞
Liquid Permittivity (target)	E.3.2	5.0	R	1.73	0.6	0.49	1.7	1.4	∞
Liquid Permittivity (measurement)	E.3.3	1.9	N	1.00	0.6	0.49	1.1	0.9	∞
<b>Combined Standard Uncertainty</b>			RSS				11.1	10.8	411
<b>Expanded Uncertainty (95% CONFIDENCE LEVEL)</b>			<i>k=2</i>				22.2	21.6	

**Appendix 6**

**Dipole Characterization Certificate**

# Certification of System Performance Check Targets

Based on WI-0396

-Historical Data-

900MHz	
Reference Target:	10.9 (W/kg)
Measurement Uncertainty (k=1):	9.0%
Measurement Period:	18-April-07 to 14-April-08
# of tests performed:	1,125
Grand Average:	11.29 (W/kg)
% Delta (Average - Reference Target)	3.6%
Is % Delta <= Expanded Measurement Uncertainty (k=2)?	Yes
Accept/Reject Average as new system performance check target?	ACCEPT
Applies to Dipole SN's: 55, 69, 77, 78, 79, 80, 91, 92, 93, 94, 95, 96, 97, 1d034, 1d035	

-New System Performance Check Targets- per WI-0396

(based on analysis of historical data)

Frequency	SAR Target (W/kg)	Permittivity	Conductivity (S/m)
900MHz	11.29	41.5 ± 5%	0.97 ± 5%

-Approvals-

Submitted by:  Date:

Signed: 

Comments:

Approved by:  Date:

Signed: 

Comments:

# Certification of System Performance Check Targets

Based on WI-0396

-Historical Data-

1800MHz	
Reference Target:	38.4 (W/kg)
Measurement Uncertainty (k=1):	9.0%
Measurement Period:	18-April-07 to 14-April-08
# of tests performed:	1,028
Grand Average:	37.7 (W/kg)
% Delta (Average - Reference Target)	-1.7%
Is % Delta <= Expanded Measurement Uncertainty (k=2)?	Yes
Accept/Reject <u>Average</u> as new system performance check target?	ACCEPT
<u>Applies to Dipole SN's:</u> 246tr, 250tr, 251tr, 259tr, 263tr, 271tr, 272tr, 276tr, 277tr, 279tr, 280tr, 281tr, 283tr, 284tr, 2d128, 2d129	

-New System Performance Check Targets- per WI-0396

(based on analysis of historical data)

Frequency	SAR Target (W/kg)	Permittivity	Conductivity (S/m)
1800MHz	37.7	40.0 ± 5%	1.40 ± 5%

-Approvals-

Submitted by:  Date:

Signed: 

Comments:

Approved by:  Date:

Signed: 

Comments:

# Certification of System Performance Check Targets

Based on WI-0396


-Historical Data-

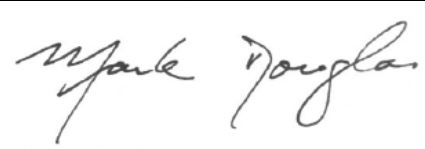
2450MHz	
Reference Target:	52.4 (W/kg)
Measurement Uncertainty (k=1):	9.0%
Measurement Period:	18-April-07 to 14-April-08
# of tests performed:	77
Grand Average:	56.5 (W/kg)
% Delta (Average - IEEE1528 Target)	7.8%
Is % Delta <= Expanded Measurement Uncertainty (k=2)?	Yes
Accept/Reject <u>Average</u> as new system performance check target?	ACCEPT
<u>Applies to Dipole SN's:</u> 740, 766, 767, 788, 789	

-New System Performance Check Targets- per WI-0396  
(based on analysis of historical data)

Frequency	SAR Target (W/kg)	Permittivity	Conductivity (S/m)
2450MHz	56.5	39.2 ± 5%	1.80 ± 5%

-Approvals-

Submitted by:  Date:   
 Signed:   
 Comments:

Approved by:  Date:   
 Signed:   
 Comments: