



**MOTOROLA**

## HAC Test Report for T-coil IHDP56K1

**Date of test:** Dec-26-2007 and Jan-07-2008  
**Date of Report:** Jan-25-2008

**Laboratory:** Motorola Mobile Devices Business Product Safety & Compliance Laboratory  
11F, Hibrand Building  
215, Yangjae-dong, Seocho-gu,  
Seoul 137-924, Korea

**Test Responsible:** Donghwan, Moon  
RF Engineer

**Statement of Compliance:** Motorola declares under its sole responsibility that portable cellular telephone FCC IHDP56HK1 to which this declaration relates, complies with recommendations and guidelines FCC 47 CFR §20.19. The measurements were performed to ensure compliance to the ANSI C63.19-2006. It also declares that the product was tested in accordance with the appropriate measurement standards, guidelines and recommended practices. Any deviations from these standards, guidelines and recommended practices are noted below:

(none)

**Results Summary:** T Category = T3

©Motorola, Inc. 2007

This test report shall not be reproduced except in full, without written approval of the laboratory.

The results and statements contained herein relate only to the items tested. The names of individuals involved may be mentioned only in connection with the statements or results from this report.

Motorola encourages all feedback, both positive and negative, on this test report.

**Table of Contents**

**1. INTRODUCTION .....3**

**2. DESCRIPTION OF THE DEVICE UNDER TEST .....3**

**3. TEST EQUIPMENT USED .....4**

**4. SIGNAL VERIFICATION .....7**

**5. TEST RESULTS .....8**

**5.1 T-coil SNR Results.....8**

**5.2 T-coil Environment Results .....12**

**5.3 T-Rating Results.....13**

**APPENDIX 1: CONTOUR PLOTS .....14**

**APPENDIX 2: AMBIENT NOISE SPECTRUM PLOTS.....19**

**APPENDIX 3: DETAILS ON THE MEASUREMENT SYSTEMS .....22**

**APPENDIX 4: PICTURES OF TEST SETUP .....29**

**APPENDIX 5: MOTOROLA UNCERTAINTY BUDGET .....33**

**APPENDIX 6: AUDIO MAGNETIC PROBE CERTIFICATE.....35**

**APPENDIX 7: AMCC CERTIFICATE (HELMHOLZ COIL) .....36**

**APPENDIX 8: HAC DISTRIBUTION PLOTS FOR E-FIELD AND H-FIELD.....37**

**1. Introduction**

The Motorola Mobile Devices Business Product Safety Laboratory has performed Hearing Aid Compatibility (HAC) measurements for the portable cellular phone (FCC ID IHDP56HK1). The portable cellular phone was tested in accordance with ANSI PC63.19-2006 standard. The test results presented herein clearly demonstrate compliance with FCC 47 CFR § 20.19. This report demonstrates compliance for T-coil performance only and not for near field emissions.

**2. Description of the Device Under Test**

**Table 1: Information for the Device Under Test**

|   |                       |                       |
|---|-----------------------|-----------------------|
| <b>FCC ID Number</b>  | <b>IHDP56HK1</b>      |                       |
| <b>Serial number</b>  | <b>01138000000375</b> |                       |
| <b>Mode(s) of Operation*</b>                                      | GSM<br>850            | GSM 1900              |
| <b>Modulation Mode(s)</b>   | GMSK                  | GMSK                  |
| <b>Maximum Output Power Setting</b>                               | 33.0 dBm              | 30.00 dBm             |
| <b>Duty Cycle</b>   | 1:8                   | 1:8                   |
| <b>Transmitting Frequency Range(s)</b>                            | 824.2 -848.8 MHz      | 1850.20 - 1909.80 MHz |
| <b>Production Unit or Identical Prototype<br/>(47 CFR §2.908)</b> | Identical Prototype   |                       |
| <b>Device Category</b>  | Portable              |                       |

Note: No Bluetooth profile exists in this phone that will allow a Bluetooth link while in a cellular call that passes audio to the earpiece. If the user had Bluetooth enabled and a link established, they could not be listening to the phone through the earpiece.

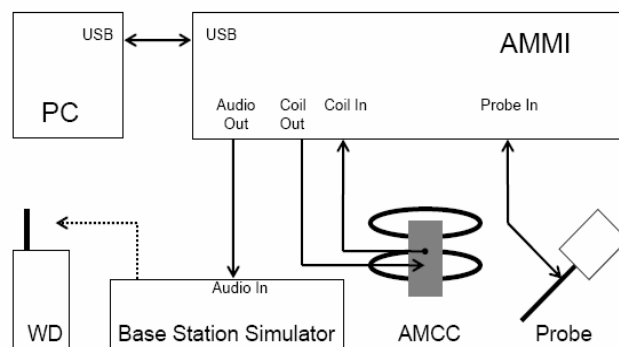
**3. Test Equipment Used**

The Motorola Mobile Devices Business Product Safety & Compliance Laboratory utilizes a Dosimetric Assessment System (Dasy4™ v4.7) manufactured by Schmid & Partner Engineering AG (SPEAG™) of Zurich, Switzerland. All T-coil measurements are taken within a shielded enclosure. The measurement uncertainty budget is given in Appendix 5. The list of calibrated equipment used for the measurements is shown in Table 2.

**Table 2: Test Equipment**

|                                  | <b>Description</b>                   | <b>Serial Number</b> | <b>Cal Due Date</b> |
|----------------------------------|--------------------------------------|----------------------|---------------------|
|                                  | DAE3                                 | 386                  | May-14-2008         |
|                                  | Audio Magnetic 1D Field Probe AM1DV2 | 1046                 |                     |
|                                  | AMMI SE UMS 010 AC                   | 1040                 |                     |
|                                  | AMCC SD HAC P02 AB                   | 1039                 |                     |
|                                  | Test Arch SD HAC P01 BB              | 1072                 |                     |
| <b>Additional Test Equipment</b> | Rohde & Schwarz CMU 200              | 111189               | Aug-21-2008         |

**Figure 1: T-coil setup and cabling (pictures from DASY manual)**



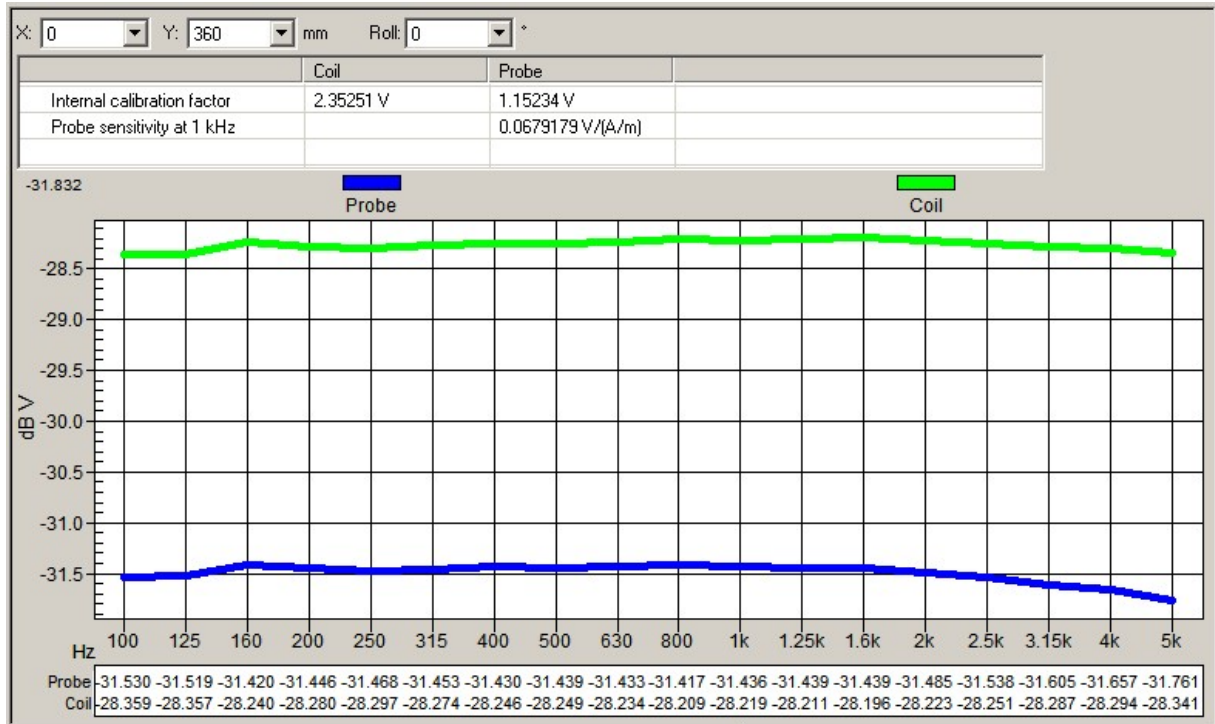
AMMI (Audio Magnetic Measurement Instrument) is a desktop unit containing a sampling unit, a waveform generator for test, calibration signals and a USB interface. Front connectors include: Audio Out - predefined or user definable audio signals for injection into the WD; Probe In - the probe signal is evaluated by AMMI; Coil Out - test and calibration signal to the AMCC; Coil In - monitor signal from the AMCC.

Audio Magnetic Probe (AM1DV2) is an active probe with a single sensor. The same probe coil is used to measure three orthogonal field components (axial, radial 1, radial 2). The probe is rotated to properly orient the coil for each field component. Probe's frequency response, linearity and other characteristics are given in the certificate in Appendix 6.

AMCC (Audio Magnetic Calibration Coil) is a Helmholtz coil for calibration of the AM1D probe. The two horizontal coils create a homogeneous magnetic field in the z direction. Refer to Appendix 7 for more details on AMCC coil.

The probe is calibrated in AMCC coil. The frequency response and sensitivity are measured and stored. Sensitivity includes both probe sensitivity and pre-amplifier sensitivity.

**Graph 1: Frequency Response measured in AMCC**

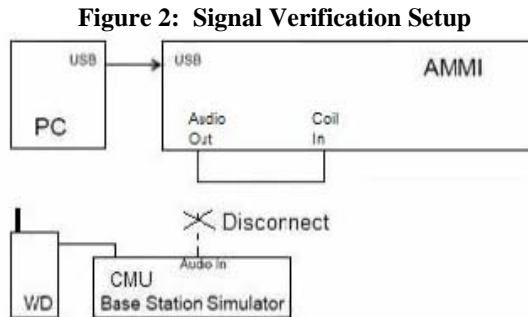


Sensitivity measured in AMCC: 0.0679179 V / (A/m)

The sensitivity is for 1 kHz sine signal. The sensitivity includes both probe sensitivity and pre-amplifier sensitivity. It is the total calibration, and there are no additional probe calibration factors. The voltage into the Helmholtz coil is across the shunt resistor.

**4. Signal Verification**

An Input Level is measured to verify that it is within +/-0.2 dB from the Reference Input Level in section 6.3.2.1 of ANSI PC63.19-2006.



In Figure 2 setup, “Audio Out” of the AMMI is connected to the “Coil In” of the AMMI. The “Audio Out” of the AMMI is measured using 1V as the reference.

Section 6.3.2.1 of ANSI PC63.19-2006 specifies the reference input level to be -16 for GSM and -18 for CDMA. Each CMU has a slightly different “0dBm0 Input Reference” value that must be measured. When the CMU box is replaced or externally re-calibrated, an internal calibration procedure must be completed in each transmission mode. On the CMU 200 (SN 111189), the 0dBm0 Input Reference value is 0.74 V for CDMA and 0.73 V for GSM. For more information on “0dBm0 Input Reference” measurements, refer to Appendix 3-5.

The Target Level for “Audio Out” of the AMMI is shown in Table 3. This target level takes into account the difference between AMMI’s and CMU’s reference levels.

**Table 3: Measured Input Level**

| Modulation | Reference Input Level from ANSI PC63.19 (dBm0) | CMU’s 0dBm0 Input Reference Value (dB) | Target Level for “Audio Out” of AMMI (dBm0) |
|------------|--|--|---|
| GSM        | -16  | -2.73                                  | -18.73                                      |

The signal level for “Audio Out” of the AMMI is measured. Signal Verification has been conducted on the same days as DUT measurements. If it is not within +/-0.2 dB, the gain settings in the DASY template are adjusted. The obtained results are displayed in Table 4.

**Table 4: Measured Input Level**

| Modulation | Measured date | Signal     | Measured Level for “Audio Out” of AMMI (dBm0) | Target Level for “Audio Out” of AMMI (dBm0) |
|------------|---------------|------------|---|---|
| GSM        | Dec-26-2007   | Narrowband | -18.69  | -18.73                                      |
|            |               | Broadband  | -18.70  |   |
| GSM        | Jan-07-2008   | Narrowband | -18.69  |   |
|            |               | Broadband  | -18.70  |   |

**5. Test Results**

**5.1 T-coil SNR Results**

The DASY4 v4.7 measurement system specified in section 3.1 was utilized within the intended operations as set by the SPEAG™ setup. The Test Arch provided by SPEAG is used to position the DUT. All tests are done via conducted setup with CMU 200. The volume on the phone is adjusted to maximum. Backlight was off during testing, and HAC compliance will be explained in the manual. The tests are performed using normal operation mode.

The Cellular Phone model covered by this report has the following battery options:

Battery #1 – SNN5804A is 910 mAH Battery

Battery #2 – SNN5771B is 850 mAH Battery

The distance is established by positioning the device beneath the test arch phantom so that it is touching the frame. The location and thickness of the arch, and the location/orientation of the coil within the probe housing, are precisely known values in the DASY software. The height of the measurement plane is further fine-tuned by performing a Surface Detection job at the beginning of each test. The end result is that the probe sensor is very precisely located 10mm above the device reference plane.

ABM2 investigation has been carried out to determine the highest channel / frequency of each applicable frequency band. At the location of the T-coil source, ABM2 is measured in the axial probe position for each frequency (Table 5). For each band, the channel with the highest ABM2 measurement is highlighted in **bold**.

**Table 5: ABM2 measurements across the frequency band for the portable cellular telephone at highest possible output power.**

| ABM2 Measurements (dB A/m) |               |               |
|----------------------------|---------------|---------------|
| GSM<br>850                 | <b>Ch 128</b> | <b>-20.51</b> |
|                            | Ch 190        | -20.63        |
|                            | Ch 251        | -20.79        |
| GSM<br>1900                | <b>Ch 512</b> | <b>-24.21</b> |
|                            | Ch 661        | -24.38        |
|                            | Ch 810        | -24.41        |

For the channels highlighted in bold in Table 5, T-coil SNR measurements are shown in Table 6. The sequence of the T-coil SNR measurement is listed in steps below.

- a) Geometry & signal check
- b) Background noise measurement. The background noise is measured at the center of the listening area.
- c) Coarse resolution axial scan (narrowband signal, 1sec measurement times, 50x50mm grid with 5.55mm spacing). Only ABM1 is measured in order to find the location of the T-coil source.
- d) Fine resolution axial, radial-transverse, & radial-longitudinal scans, positioned appropriately based on optimal ABM1 of coarse resolution axial scan (narrowband signal, 1sec measurement times, variable grid size with 2mm spacing). Both ABM1 and ABM2 are measured in order to find the location of the SNR point.
- e) ABM1 & ABM2 point measurements in axial, radial-transverse, & radial-longitudinal coil orientations, positioned appropriately based on optimal signal quality of fine resolution scans (narrowband signal, 2sec measurement times). SNR is calculated for each coil orientation.
- f) Frequency Response point measurement in axial coil orientation, positioned appropriately based on optimal signal quality of fine resolution axial scan (broadband signal, 12sec measurement time)

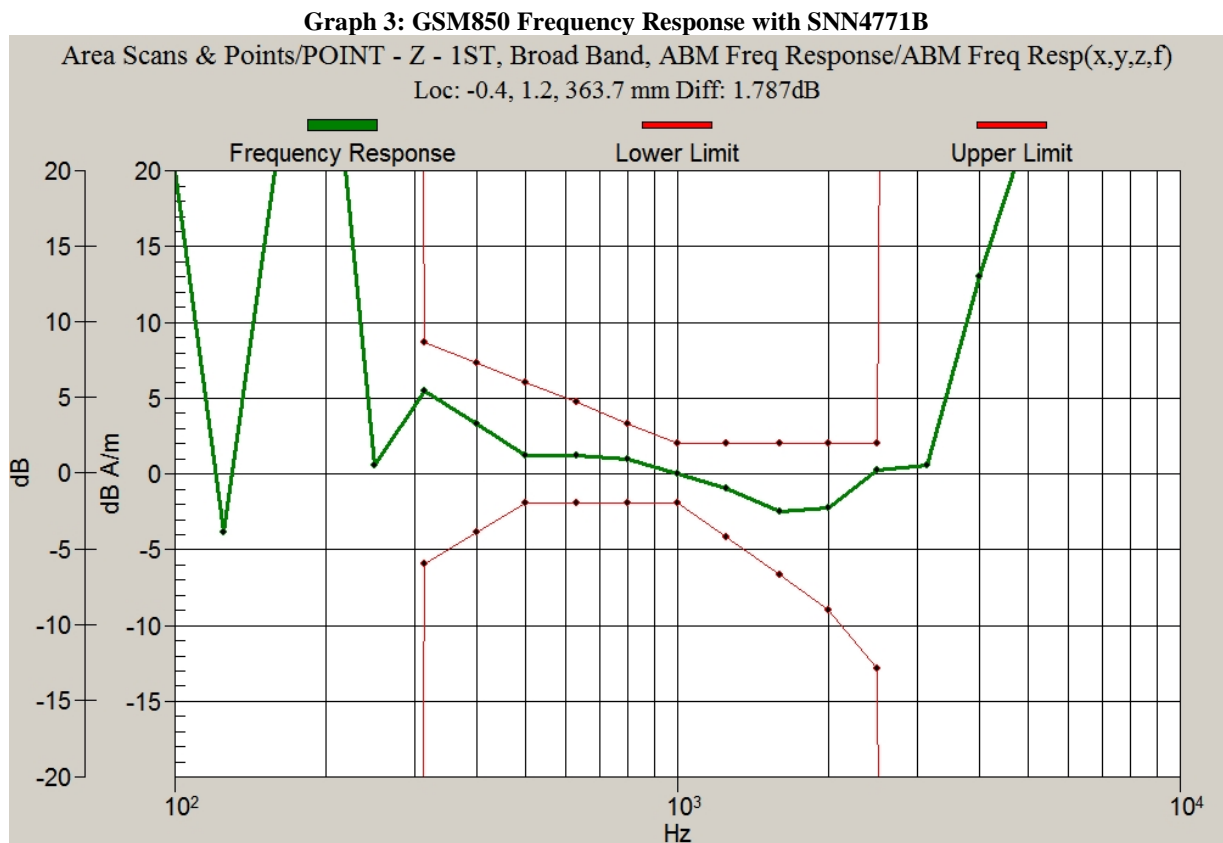
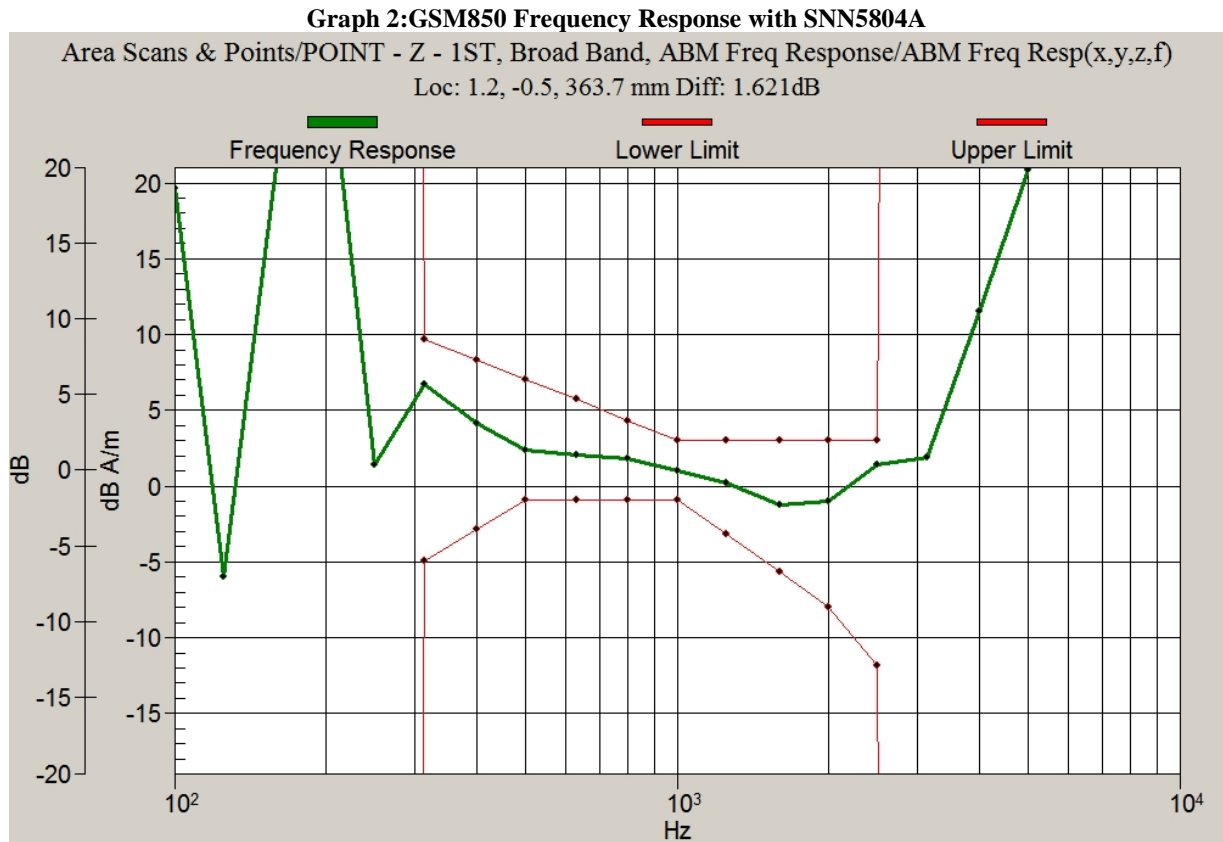
The ABM1, SNR and T-coil Rating results are shown in Table 6. Also shown are the measured conducted output power, location of the measured point, noise and ABM2. The delta between Ambient Noise measurement and

ABM2 measurement should be greater than 10 dB. However, in cases where ABM2 is very low, it is suitable for the delta to be less than 10 dB. For the three probe positions, contour plots for the lowest SNR, indicated in **bold numbers**, are given in Appendix 1. For the three probe positions, noise spectrum plots for the highest ambient noise, indicated with **bold numbers**, are given in Appendix 2. These noise spectrum plots are half band integrated with an A-weight filter applied.

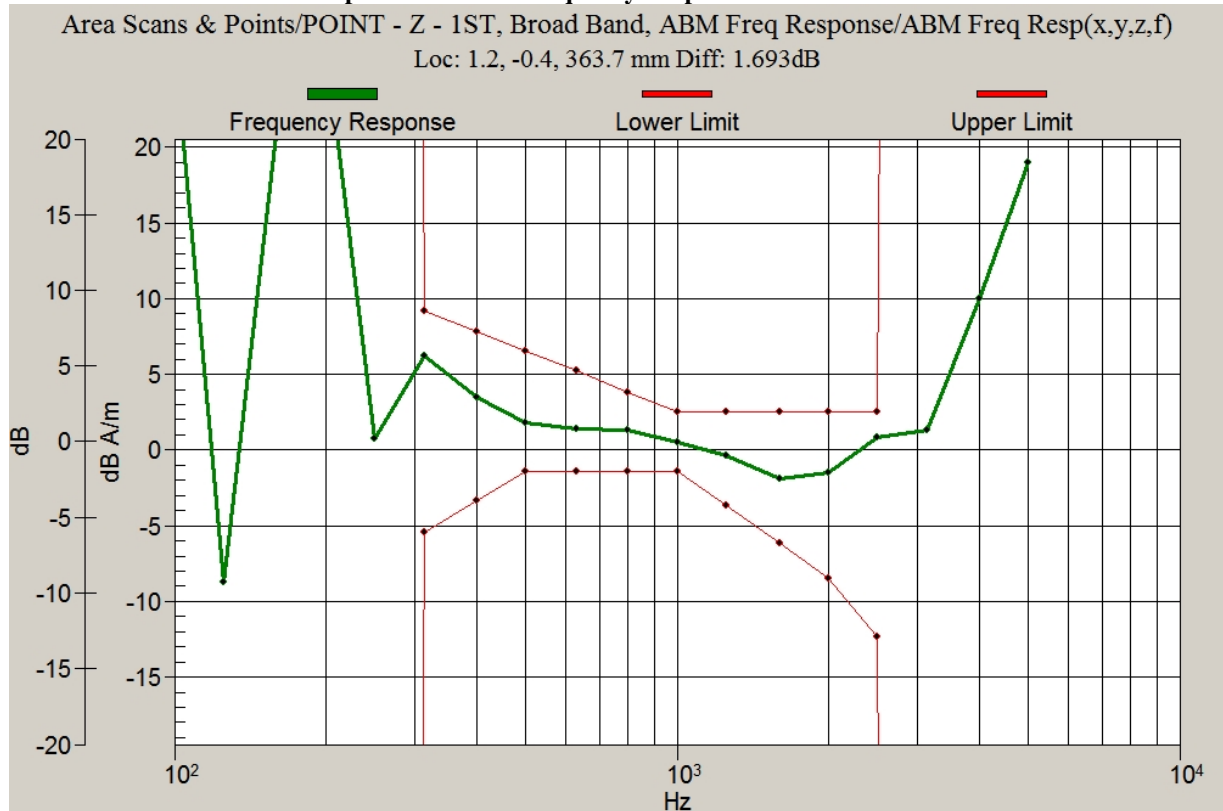
| T-coil SNR Limits for AWF = -5 |   |                    |
|--------------------------------|---|--------------------|
| ABM 1                          | Greater or equal to -13 dB A/m (axial)<br>Greater or equal to -18 dB A/m (radial) |                    |
| SNR                            | T3  | Greater than 5 dB  |
|                                | T4  | Greater than 15 dB |

**Table 6: T-coil SNR measurement results for the portable cellular telephone at highest possible output power.**

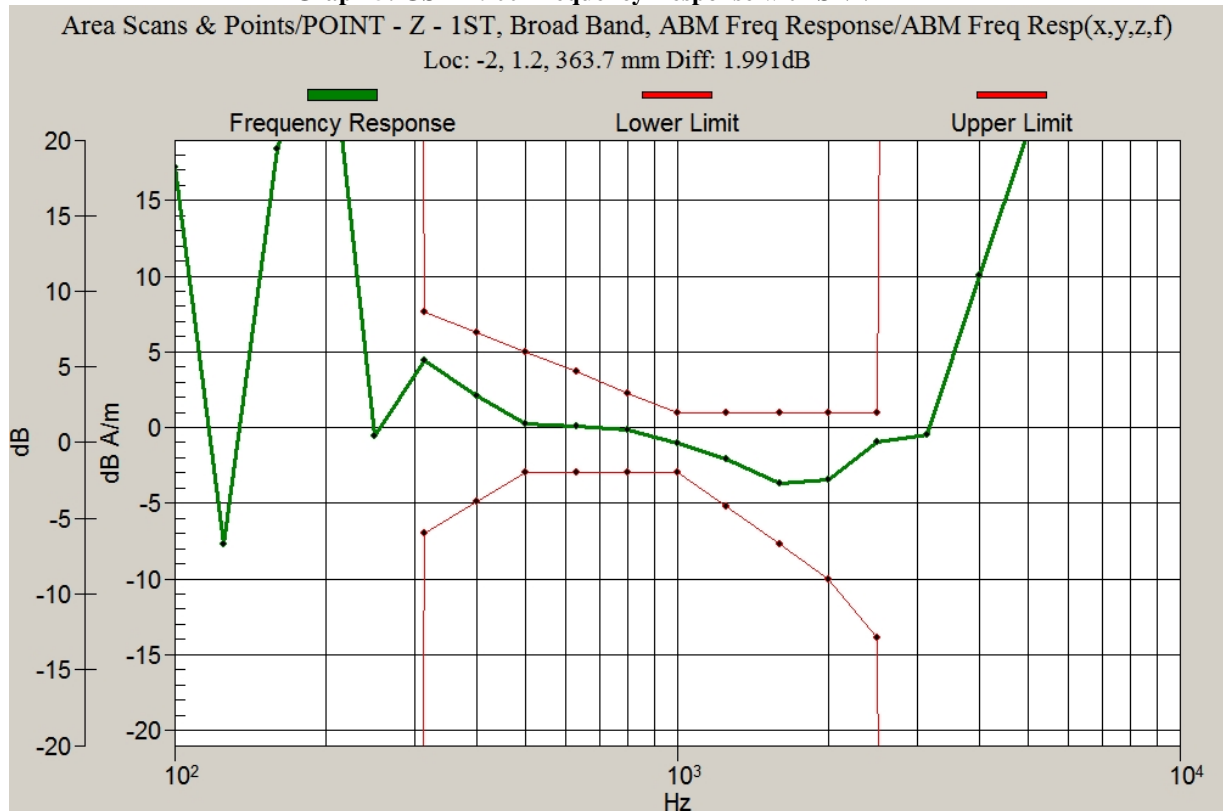
| Probe Position | Frequency Band (MHz) | Channel       | Conducted Output Power (dBm) | Measured Point Location (x mm, y mm) | Ambient Noise (dB A/m) | ABM2 (dB A/m) | ABM2 – Ambient Noise (dB) | ABM1 (dB A/m) | SNR (dB)     | T-coil SNR Rating |
|----------------|----------------------|---------------|------------------------------|--------------------------------------|------------------------|---------------|---------------------------|---------------|--------------|-------------------|
| Axial          | GSM 850              | 128           | 32.88                        | 1.2, -0.5                            | -54.94                 | -21.11        | 33.83                     | 1.05          | 22.16        | T4                |
|                |                      | With Battery2 |                              | -0.4, 1.2                            | <b>-54.33</b>          | -17.03        | 37.30                     | 0.04          | <b>17.07</b> | T4                |
|                | GSM 1900             | 512           | 30.2                         | 1.2,-0.4                             | -55.80                 | -24.52        | 31.28                     | 0.55          | 25.07        | T4                |
|                |                      | With Battery2 |                              | -2,1.2                               | -57.51                 | -22.10        | 35.41                     | -1.19         | 20.91        | T4                |
| Radial 1       | GSM 850              | 128           | 32.88                        | 7.2, 3.1                             | -58.23                 | -15.04        | 43.19                     | -7.88         | 7.16         | T3                |
|                |                      | With Battery2 |                              | -6.8, 1.5                            | -58.63                 | -13.56        | 45.07                     | -7.11         | <b>6.45</b>  | T3                |
|                | GSM 1900             | 512           | 30.2                         | 7.2,3.2                              | <b>-57.78</b>          | -19.23        | 38.55                     | -8.47         | 10.76        | T3                |
|                |                      | With Battery2 |                              | -6.8,1.1                             | -57.86                 | -17.51        | 40.35                     | -7.29         | 10.22        | T3                |
| Radial 2       | GSM 850              | 128           | 32.88                        | -4.8, 11.1                           | -57.93                 | -31.73        | 26.20                     | -10.45        | <b>21.28</b> | T4                |
|                |                      | With Battery2 |                              | -2.8, -4.5                           | <b>-56.45</b>          | -38.31        | 18.14                     | -9.67         | 28.64        | T4                |
|                | GSM 1900             | 512           | 30.2                         | -4.8,11.2                            | -59.12                 | -36.24        | 22.88                     | -10.85        | 25.39        | T4                |
|                |                      | With Battery2 |                              | -2.8,-4.8                            | -58.15                 | -40.95        | 17.20                     | -9.29         | 31.66        | T4                |



**Graph 4: GSM1900 Frequency Response with SNN5804A**



**Graph 5: GSM 1900 Frequency Response with SNN4771B**



**5.2 T-coil Environment Results**

T-coil Environment is determined by analysis of both E-Field scan and H-Field scans in the area of the T-coil location. The T-coil location is the earpiece speaker area. The 5cm x 5cm measurement grid is centered on the acoustic output of the device. The probe is raised 10mm from the highest point of the phone’s contour to the nearest point of the probe element. The phone was tested in all normal configurations for the ear use. These configurations are tested at the high, middle and low frequency channels of each applicable frequency band. For more information on the near field measurements on the unit 01138000000375, refer to “HAC Test Report for Near Field Emissions IHDP56HK1 from Dec 21, 2007.

The worst-case test conditions are indicated with **bold numbers** in the tables and are detailed in Appendix 8: HAC distribution plots for E-Field and H-Field.

**Table 7: T-coil Environment measurement results for the portable cellular telephone at highest possible output power.**

**Table 7-a HAC E-Field Measurement Results**

| Frequency Band (MHz) | Antenna position | Channel Setting | Conducted Output Power (dBm) | Measured PMF | Drift (dB)  | Excluded Cells | Peak Field (V/m) | Rating |
|----------------------|------------------|-----------------|------------------------------|--------------|-------------|----------------|------------------|--------|
| GSM 850MHz           | Fixed            | 128             | 32.88                        | 2.82         | <b>0.07</b> | <b>2,3</b>     | <b>241.2</b>     | M3     |
|                      |                  | 190             | 32.86                        |              | 0.12        | 2,3,6          | 176.4            | M3     |
|                      |                  | 251             | 32.89                        |              | -0.09       | 4,7,8          | 195.0            | M3     |
|                      |                  | 128 w/ Batt2    |                              |              | 0.07        | 2,3            | 224.3            | M3     |
| GSM 1900MHz          | Fixed            | 512             | 30.04                        | 2.82         | -0.15       | 6,9            | 74.8             | M3     |
|                      |                  | 661             | 30.03                        |              | <b>0.19</b> | <b>1,2,3</b>   | <b>79.1</b>      | M3     |
|                      |                  | 810             | 30.02                        |              | 0.18        | 1,2,3          | 60.3             | M3     |
|                      |                  | 661 w/ Batt2    |                              |              | 0.14        | 1,2,3          | 73.5             | M3     |

**Table 7-b HAC H-Field Measurement Results**

| Frequency Band (MHz) | Antenna position | Channel Setting | Conducted Output Power (dBm) | Measured PMF | Drift (dB)   | Excluded Cells | Peak Field (A/m) | Rating |
|----------------------|------------------|-----------------|------------------------------|--------------|--------------|----------------|------------------|--------|
| GSM 850MHz           | Fixed            | 128             | 32.88                        | 2.36         | 0.05         | 1,4,7          | 0.533            | M3     |
|                      |                  | 190             | 32.86                        |              | -0.03        | 1,2,4          | 0.535            | M3     |
|                      |                  | 251             | 32.89                        |              | -0.01        | 3,6            | 0.627            | M3     |
|                      |                  | 251 w/ Batt2    |                              |              | <b>-0.03</b> | <b>3,6</b>     | <b>0.631</b>     | M3     |
| GSM 1900MHz          | Fixed            | 512             | 30.04                        | 2.58         | 0.05         | 1,2,4          | 0.184            | M3     |
|                      |                  | 661             | 30.03                        |              | <b>-0.17</b> | <b>1,2,4</b>   | <b>0.213</b>     | M3     |
|                      |                  | 810             | 30.02                        |              | -0.12        | 1,2,4          | 0.169            | M3     |
|                      |                  | 661 w/ Batt2    |                              |              | -0.07        | 1,2,4          | 0.202            | M3     |

**5.3 T-Rating Results**

Both T-coil SNR (Table 6) and T-coil Environment (Table 7) determine the T-rating. Table 8 summarizes the T-coil SNR rating and the T-coil Environment rating. For each probe position and frequency band, the T-rating is determined from lower of T-coil SNR and T-coil Environment.

**Table 8: T-Rating results**

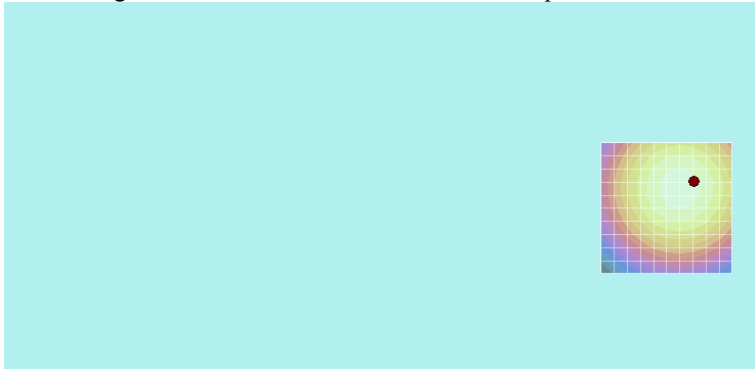
| Probe Position | Frequency Band (MHz) | ABM1 | Frequency Response | T-coil SNR Rating (from section 5.1) | T-coil Env Rating (from section 5.2) | T-rating |
|----------------|----------------------|------|--------------------|--------------------------------------|--------------------------------------|----------|
| Axial          | GSM 850              | pass | pass               | T4                                   | T3                                   | T3       |
|                | GSM 1900             | pass | pass               | T4                                   | T3                                   | T3       |
| Radial 1       | GSM 850              | pass |                    | T3                                   | T3                                   | T3       |
|                | GSM 1900             | pass |                    | T3                                   | T3                                   | T3       |
| Radial 2       | GSM 850              | pass |                    | T4                                   | T3                                   | T3       |
|                | GSM 1900             | pass |                    | T4                                   | T3                                   | T3       |

The final T-rating for the portable cellular phone (FCC ID IHDP56HK1) is the lowest T-rating from Table 8 (last column). This rating is the lowest category across probe positions and frequency bands.

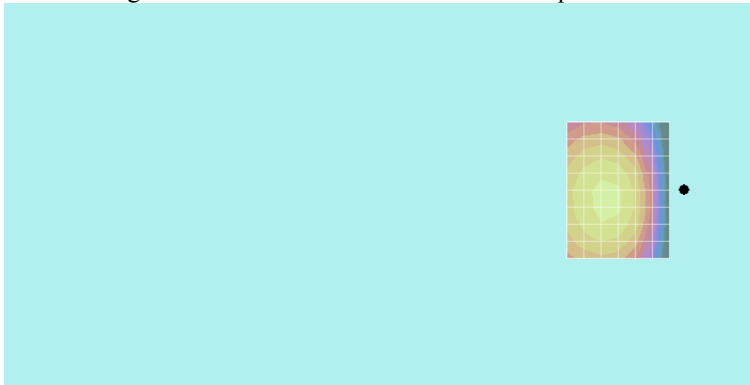
|  |    |
|--|----|
| T-rating for DUT (lowest rating from Table 8, last column) | T3 |
|--|----|

**Appendix 1**  
**Contour Plots**

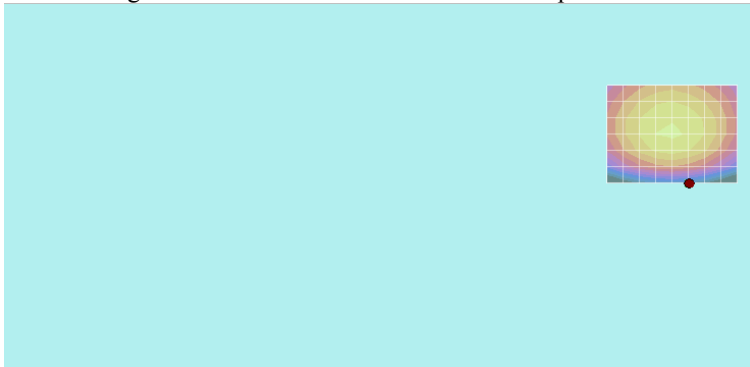
Z-Axial Signal Scan. Device reference is the brown point.



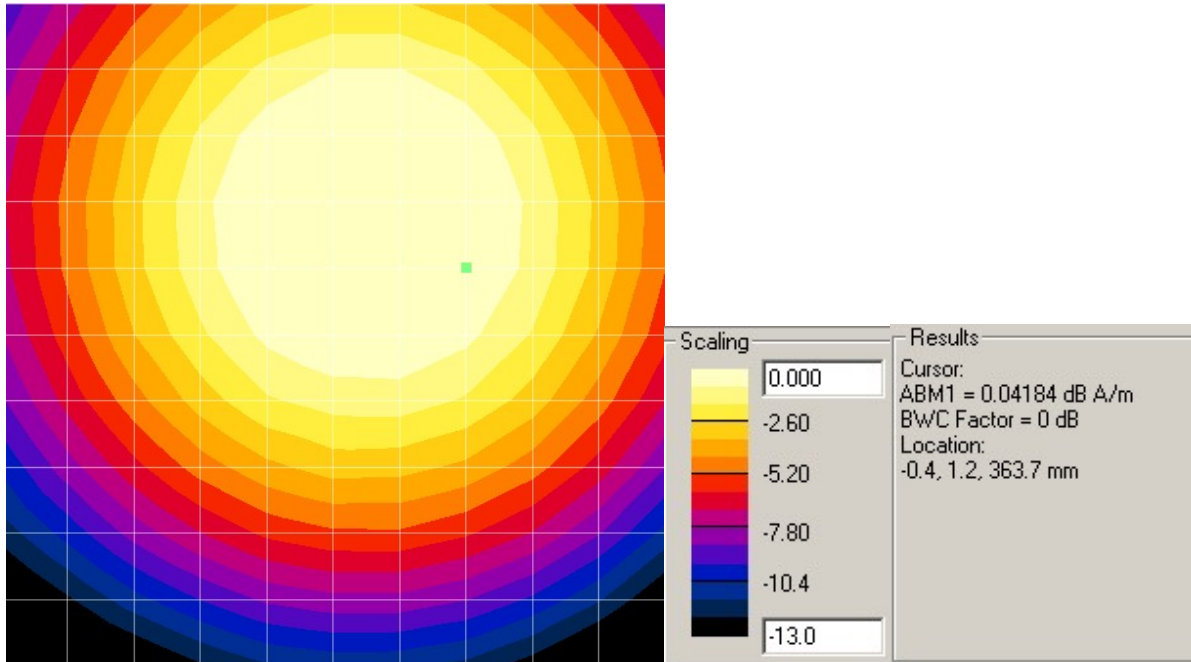
X-Radial Signal Scan. Device reference is the brown point.



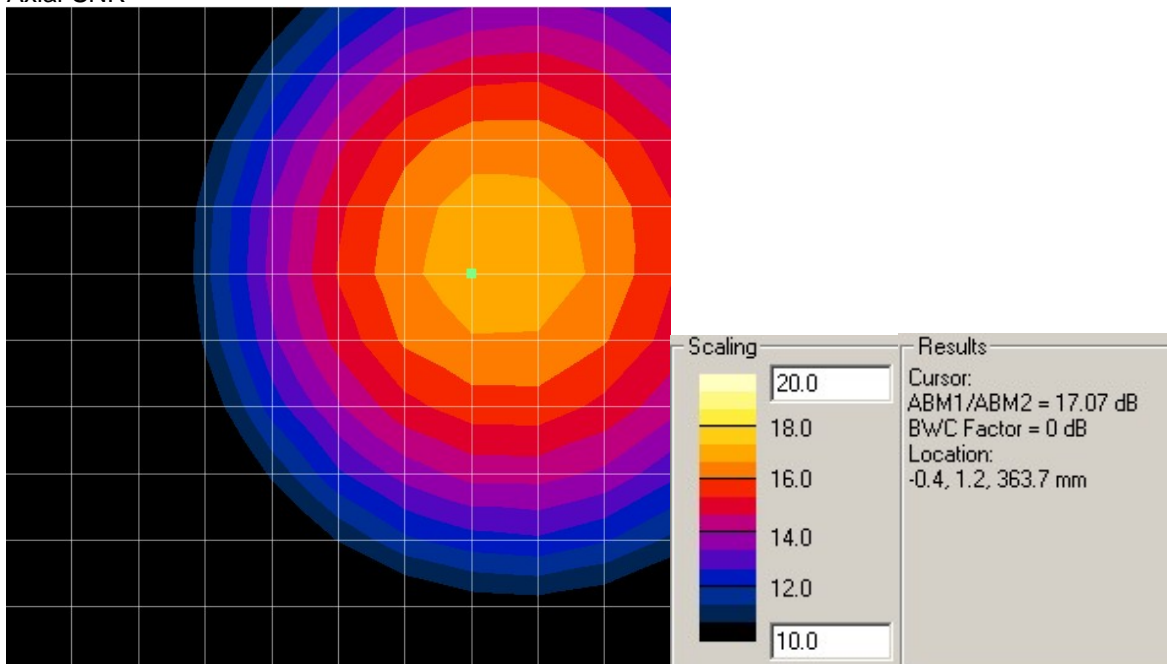
Y-Radial Signal Scan. Device reference is the brown point.



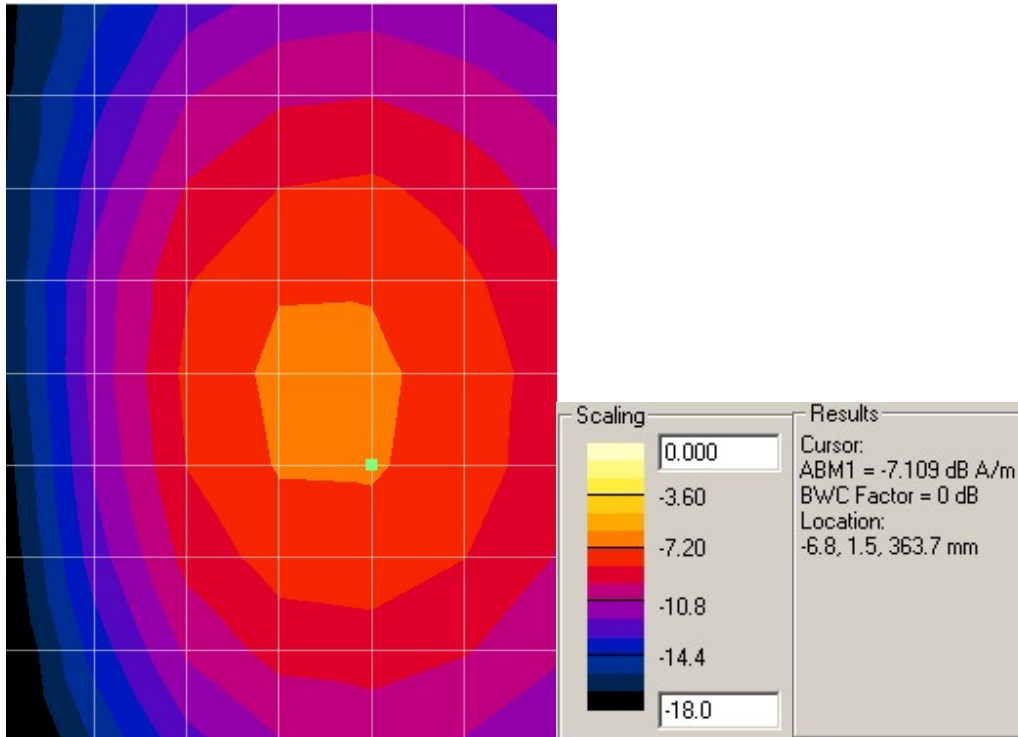
Axial-ABM1



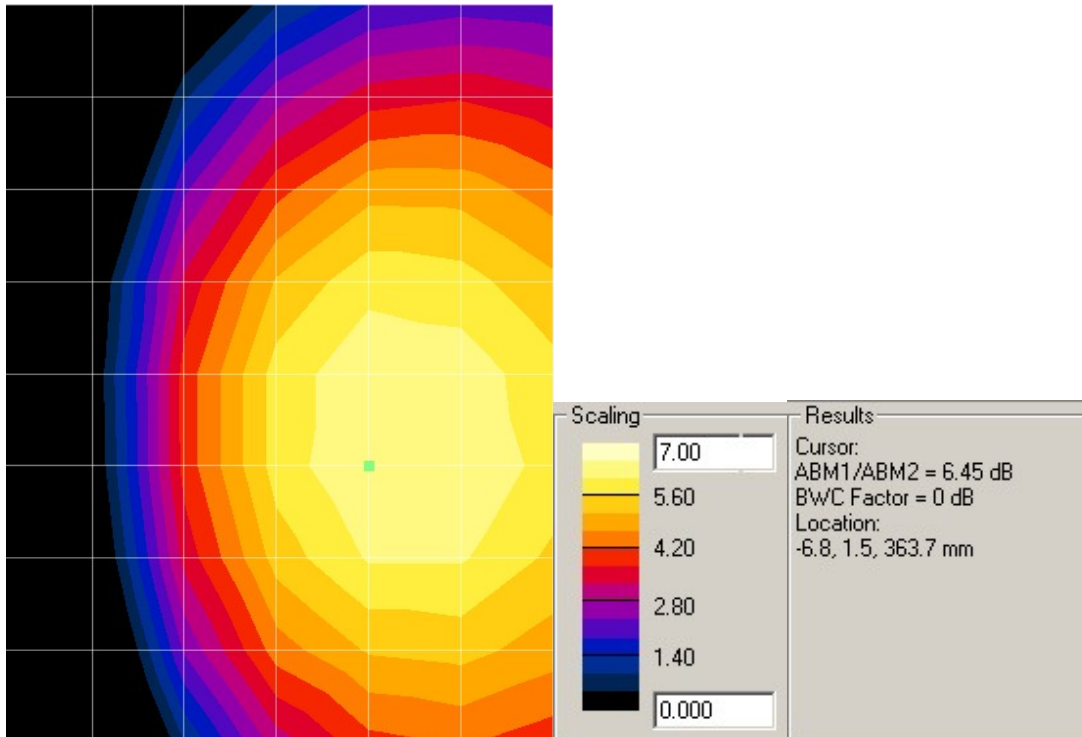
Axial-SNR



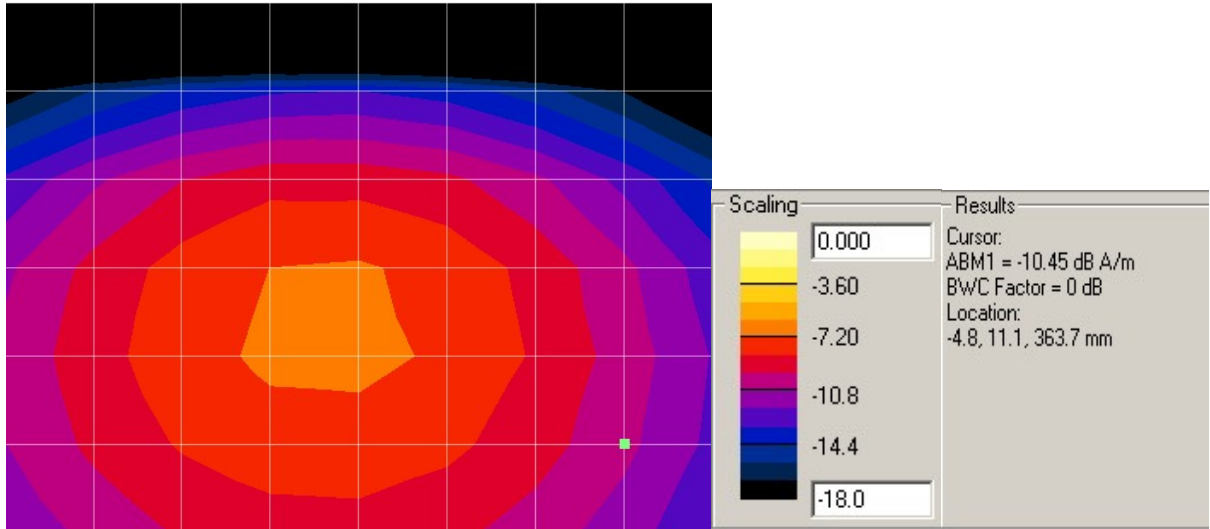
Radial1-ABM1



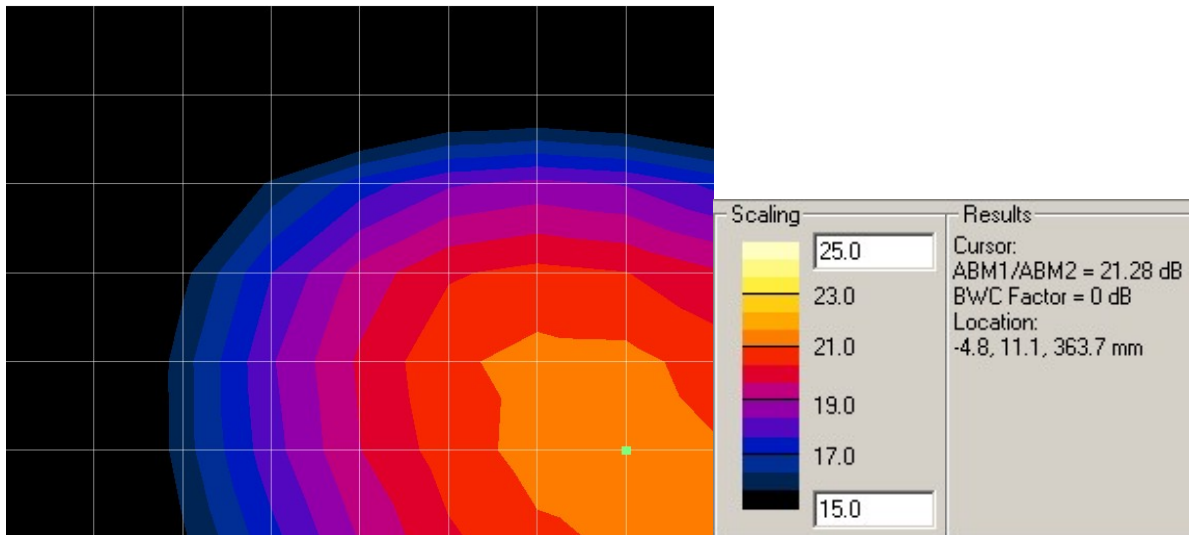
Radial1-SNR



Radial2-ABM1



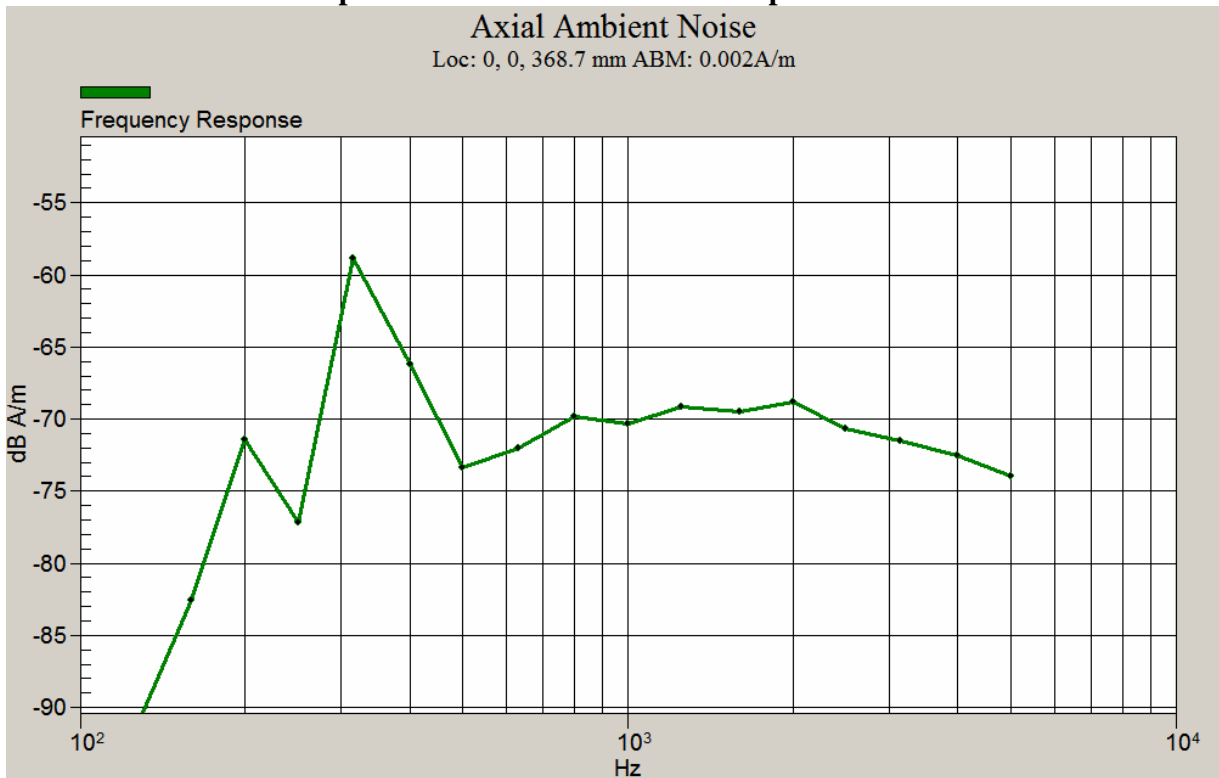
Radial2-SNR



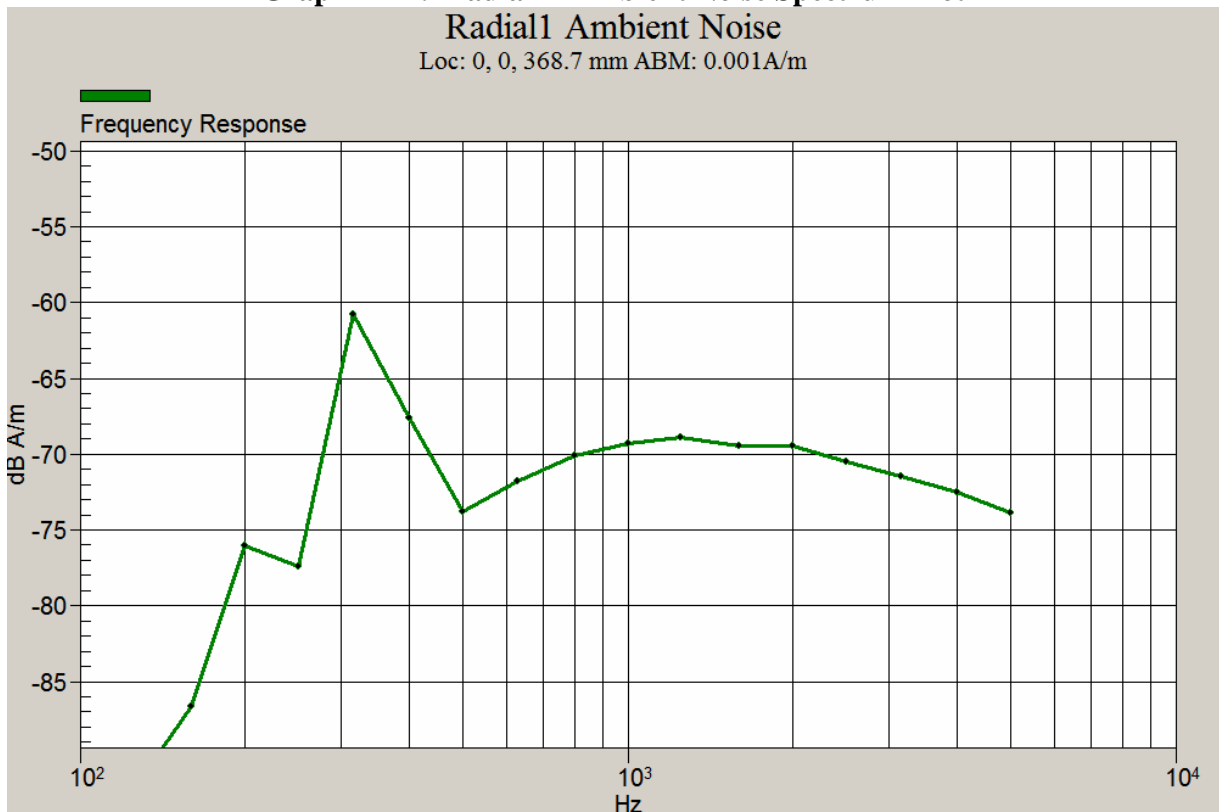
**Appendix 2**

**Ambient Noise Spectrum Plots**

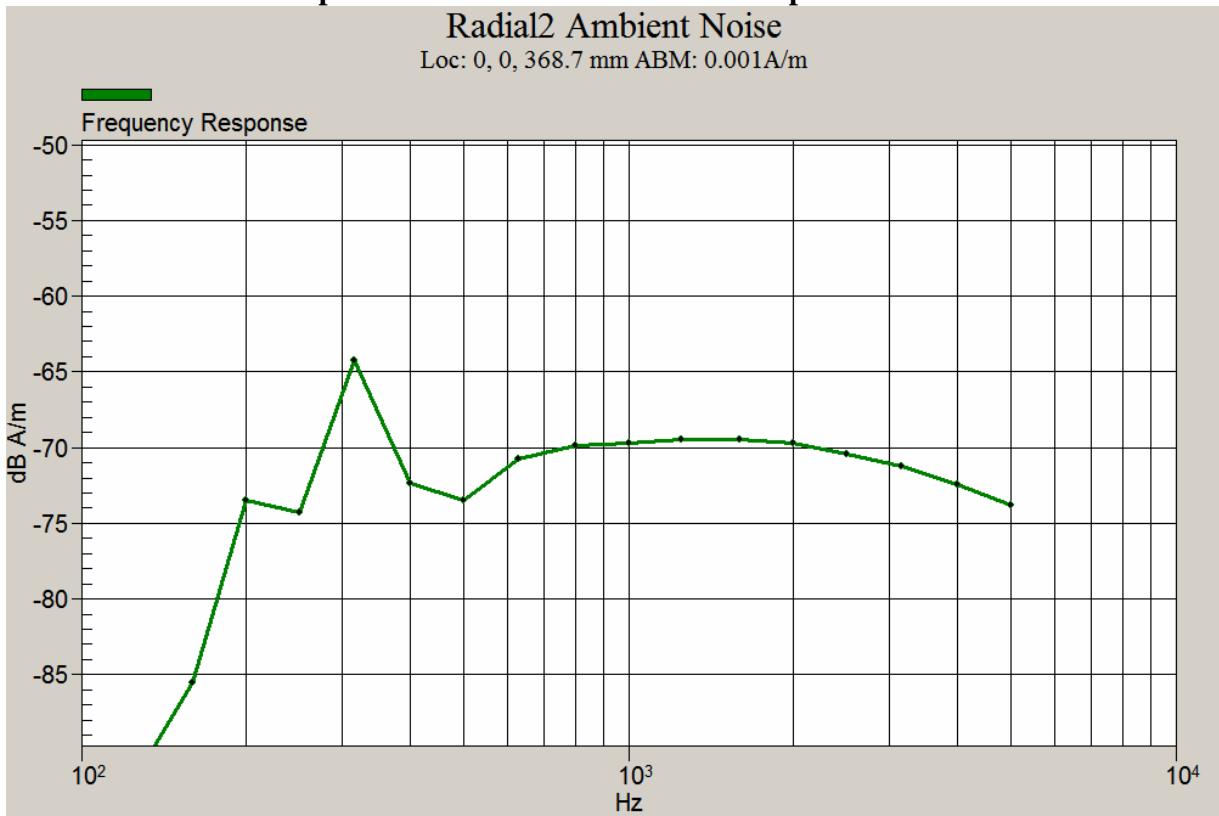
**Graph A2-1. Axial Ambient Noise Spectrum Plot**



**Graph A2-2. Radial 1 Ambient Noise Spectrum Plot**



**Graph A2-3. Radial 2 Ambient Noise Spectrum Plot**



**Appendix 3**

**Details on the Measurement Systems**

**3-1) Details on ABM2 measurements by the system**

**(Description provided by Schmid & Partner Engineering, AG):**

The processing applies a convolution in the time-domain. This filtering is composed of integrator (straight-forward), Half-Band filter (first-order filter) and A-weighting. The convolved data stream is then integrated over the desired period and represented and stored numerically in DASY4 as the ABM Noise (= ABM2).

During the validation process of our system, the functionality of this process has been verified by debugging the filters step-by-step progressive and comparing the results also with a Rohde & Schwarz UPL Analyzer. The intermediate steps are not accessible in the final software code operated by the end user. In addition, the following verification has been made, using a single frequency (sine) signal: At the reference frequency of 1 kHz, the signal is equivalent to ABM1. ABM1 is visible from the calibration job, inclusive its frequency slope from 100Hz to 5kHz. This function (conversion of the coil voltage to the field) is the same integration function.

The verification of the probe linearity and the linearity of the integrator has been determined and documented in the certificate 880-SP AM1 001 A, inclusive the integrator, over the required frequency range (exceeding 5 kHz). The additional frequency slope of the Half-Band filter and the A-weighting have also been tested by changing the applied frequency over the full range. The attenuation was verified for each third-octave-band and up to > 10 kHz. In addition, the correct processing of multiple sine-wave signals was verified.

The convolutions work over the full frequency range available in the analog path, only limited by AC-coupling at the low end and anti-aliasing filter at the high frequency end. White noise signal without band limitation has not been used for filter measurements. Pink noise, decreasing with frequency, resulting in a frequency independent response of the third-octave filter bank was used to optically verify the correct filtering function. Precision measurements were however made with pure sine signals.

Frequency components beyond the visible range of 5 kHz are contained in the ABM2 figure.

**(Measurements made by Motorola):**

Comparison of 1kHz narrowband signal driven externally into TMFS coil

|             |             |            |
|-------------|-------------|------------|
| ABM1 @ 1kHz | ABM2 @ 1kHz | difference |
| -25.122     | -25.124     | 0.002 dB   |

Frequency dependent ABM1 - ABM2 with broadband noise and narrowband tones driven externally into TMFS coil

| Frequency                     | dB difference ABM1-ABM2 broadband signal | dB difference ABM1-ABM2 single frequency signals | ideal value for ABM1-ABM2 | variance from ideal broadband | variance from ideal single frequencies |
|-------------------------------|--|--|---------------------------|-------------------------------|--|
| 200                           |  | 22.062   | 22.35                     |                               | 0.288                                  |
| 250                           |  |  | 17.89                     |                               |  |
| 315                           |  |  | 14.03                     |                               |  |
| 400                           |  | 10.371   | 10.39                     |                               | 0.019                                  |
| 500                           | 6.852                                    |  | 7.18                      | 0.328                         |  |
| 630                           | 4.228                                    |  | 4.36                      | 0.132                         |  |
| 800                           | 1.587                                    | 1.881  | 1.88                      | 0.293                         | -0.001                                 |
| 1000                          | 0.013                                    | 0.013  | 0                         | -0.013                        | -0.013                                 |
| 1250                          | -1.473                                   |  | -1.46                     | 0.013                         |  |
| 1600                          | -2.72                                    |  | -2.58                     | 0.14                          |  |
| 2000                          | -3.535                                   | -3.235   | -3.24                     | 0.295                         | -0.005                                 |
| 2500                          | -3.738                                   |  | -3.67                     | 0.068                         |  |
| 3150                          | -3.837                                   |  | -3.79                     | 0.047                         |  |
| 4000                          | -3.733                                   | -3.744   | -3.75                     | -0.017                        | -0.006                                 |
| 5000                          | -3.283                                   | -3.336   | -3.34                     | -0.057                        | -0.004                                 |
| maximum variation from ideal: |  |  |                           | 0.328 dB                      |  |

**3-2) Details on the compliancy of the frequency and linearity response**

**(Description provided by Schmid & Partner Engineering, AG):**

See also probe certificate of conformity in Appendix 6, titled 880-SP AM1 001 A-A

See also coil certificate of conformity in Appendix 7, titled 880-SD HAC P02A-A

Frequency response has been tested to be within +/- 0.5 dB of ideal differentiator from 100 Hz to 10 kHz. The test was made with the real integrator and deducting the ideal integrator values. Reference signal was the Helmholtz calibration coil current which is equivalent to the field. The coil is qualified according to certificate 880-SD HAC P02 A-A.

The test data up to 5 kHz are visible directly in the calibration job result (coil current / shunt voltage, and probe voltage). Separate measurements were made for a very wide frequency range, including higher frequencies. For the third-octave bands up to 5 kHz do not exceed 0.05 dB and decay by < 0.2 dB to 5 kHz and by < 0.5 dB to 10 kHz, as required.

Linearity has also been tested and is stated in the certificate. Deviation was not measurable from 5 dB below limitation to 26 dB above noise level. For lower levels, the deviation increased to 0.1 dB at 16 dB above noise level, which corresponds to the theoretical value of 0.11 dB expected at that noise suppression level.

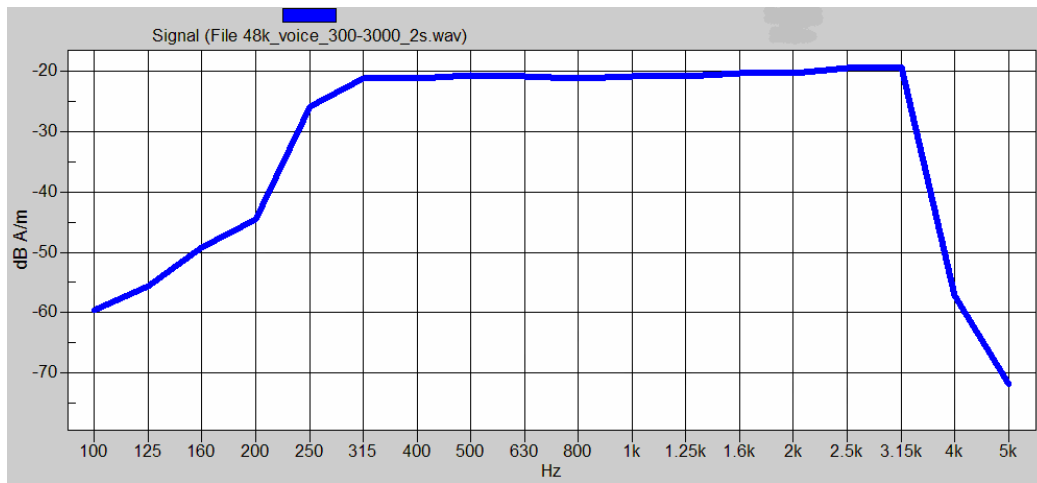
Significant noise contribution beyond 10 kHz will be attenuated by the convoluting A-filter as explained in answer #2. Such interferences contribute also to ABM2 represented as numerical value from the integration.

**3-3) Details on Measurements by the systems**

Details regarding timing and averaging of the reported final measured points are as follows:

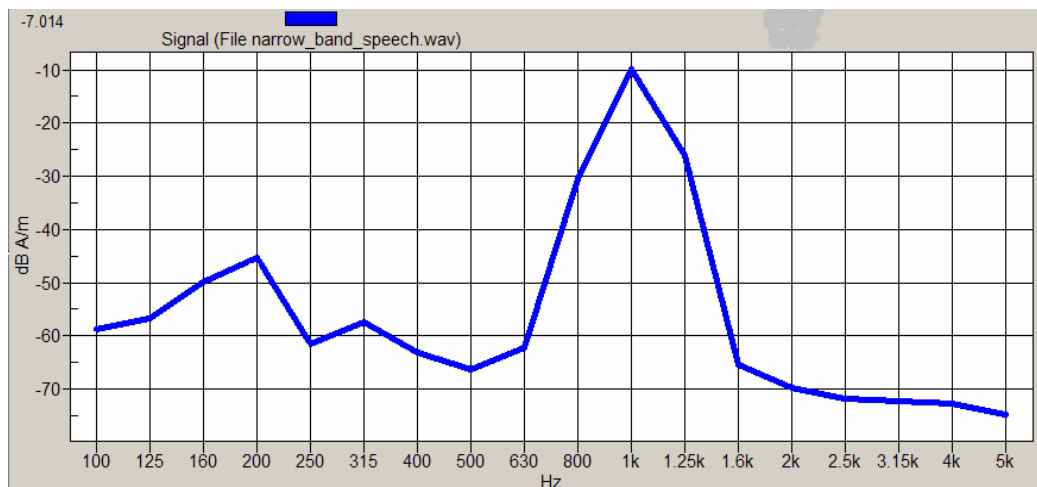
|   | Narrowband Signal                      | Broadband Signal                       |
|---|--|--|
| Signal Length (sec):                            | 1                                      | 2                                      |
| Total Data Acquisition Time per Location (sec): | 2                                      | 12                                     |
|   | Averaging is over 2 signal repetitions | Averaging is over 6 signal repetitions |

The broadband signal utilized is shown in the following plot:



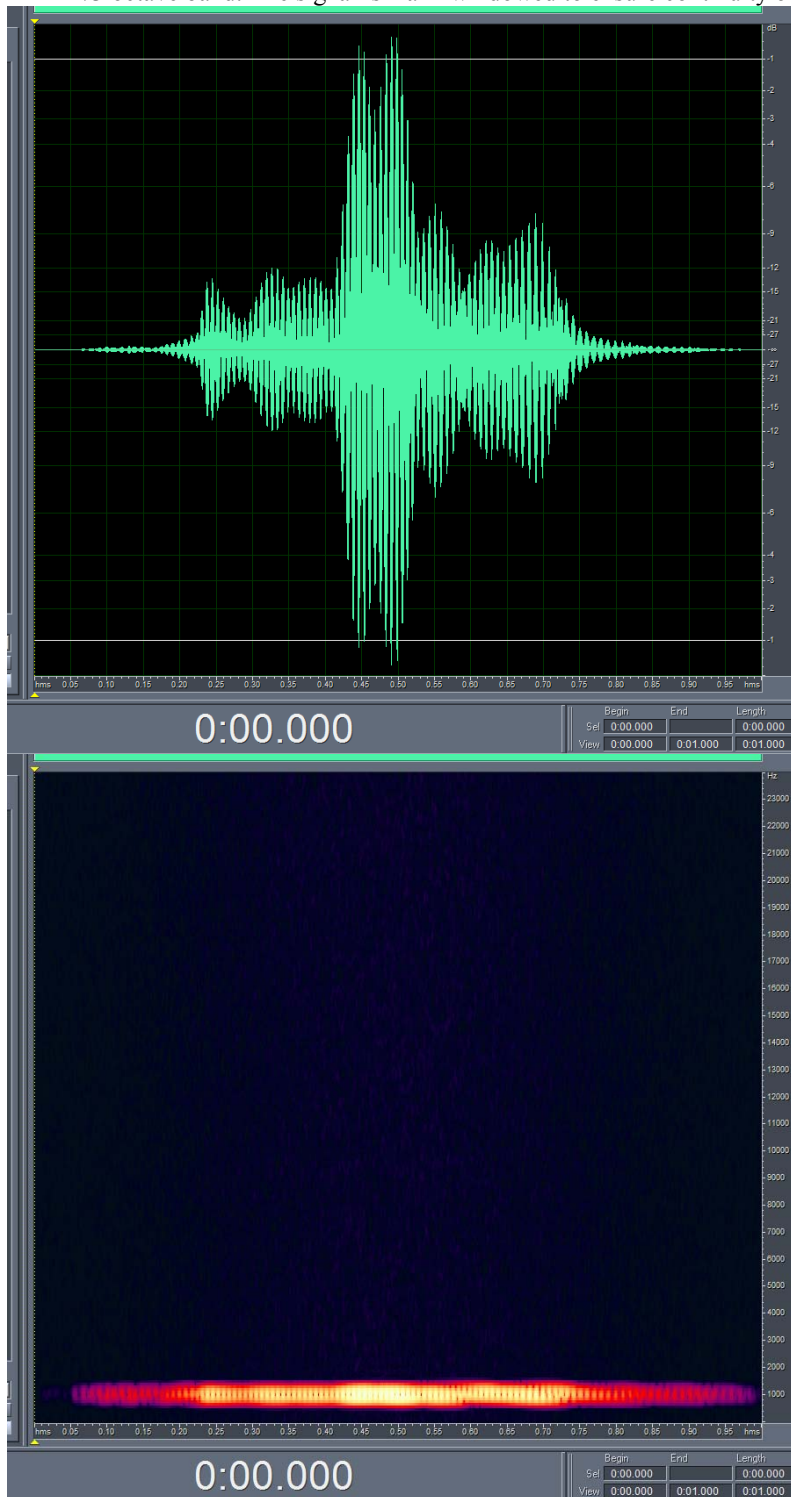
Mathematical processing is not required because the preferred method (as described in IEEE ANSI C63.19-2006 section 6.3) is utilized. The broadband audio signal is used only for assessment of frequency response. The DASY4 system corrects for the spectral response after measurement since it knows the spectrum of the input signal. However, please note that for the signal that we use, the spectrum is flat when measured in 1/3 octave bands, covering the range up to 3kHz.

The narrowband signal utilized is shown in the following plot:

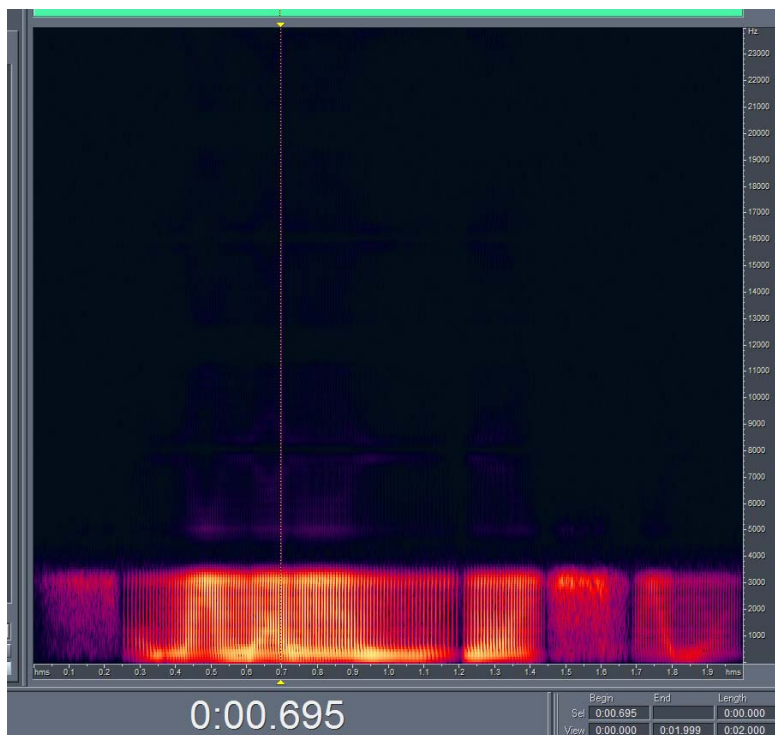
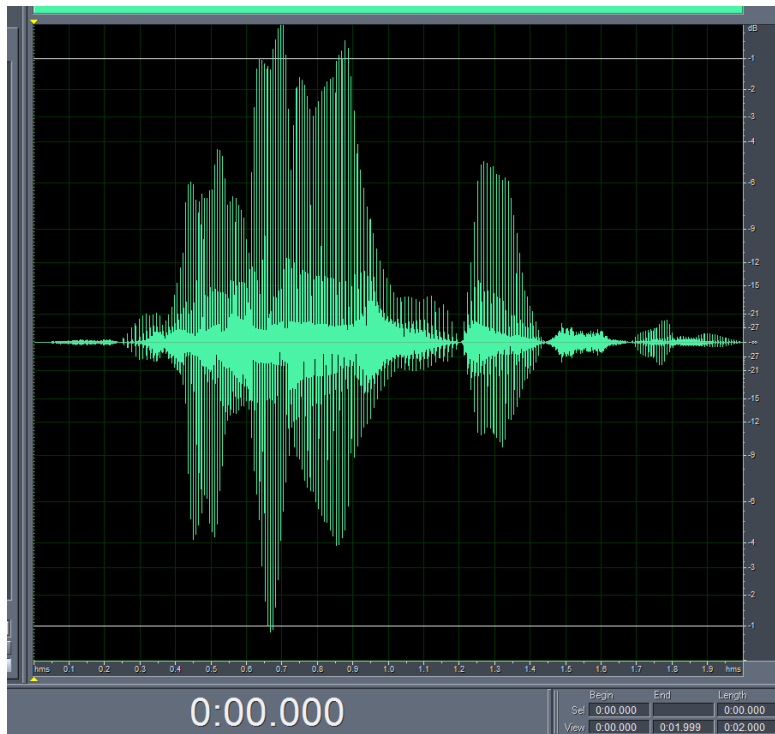


**3-4) Details of the source audio signals for all aspects of the test**

Here is the temporal response of the narrow band signal. The signal is one second of the standard P.50 speech band limited to the ANSI 1kHz 1/3 octave band. The signal is Hann windowed to ensure continuity of the signal.



Here is the temporal response of the 300Hz-3kHz broadband signal. The signal is a 2 second segment of the standard P.50 speech that is equalized flat (for ANSI 1/3 octaves) over the 300Hz to 3kHz range. The signal is Hann windowed to ensure continuity of the signal.



**3-5) Details of the CMU-200 “0dBm0 Input Reference value”**

**Measure “Ref Input Level”**

- a) Generate a 1 kHz Sine Signal using AMMI.
- b) Capture a signal level using AMMI.
- c) Record the value as the "Ref Input Level"

**Measure Value “X”**

- d) Connect CMU to AMMI.
- e) Connect a phone which operates in the desired modulation to the CMU. Establish a call to the CMU. Select Decoder Cal on CMU.
- f) Capture a signal level from CMU using AMMI.
- g) Record the value as the "Value X".

**Measure Value “M”**

- h) Make another connection from AMMI to CMU. Change to Encoder Cal on CMU.
- i) Generate a 1 kHz Sine Signal using AMMI
- j) Capture a signal from CMU using AMMI.
- k) Record the value as the "Value M".

Calculate the resulting Input Correction Factor & the 0dBm0 Input Reference

**Relevant Equations:**

Measured values from above: Ref Input Level, X, M

Input Correction Factor = Ref Input Level + X – M

0dBm0 Input Reference =  $10^{(\text{Input Corr Factor}/20)}$  \* CMU-200 manual ref value

**Appendix 4**

**Pictures of Test Setup**



Figure A4-1. Phone

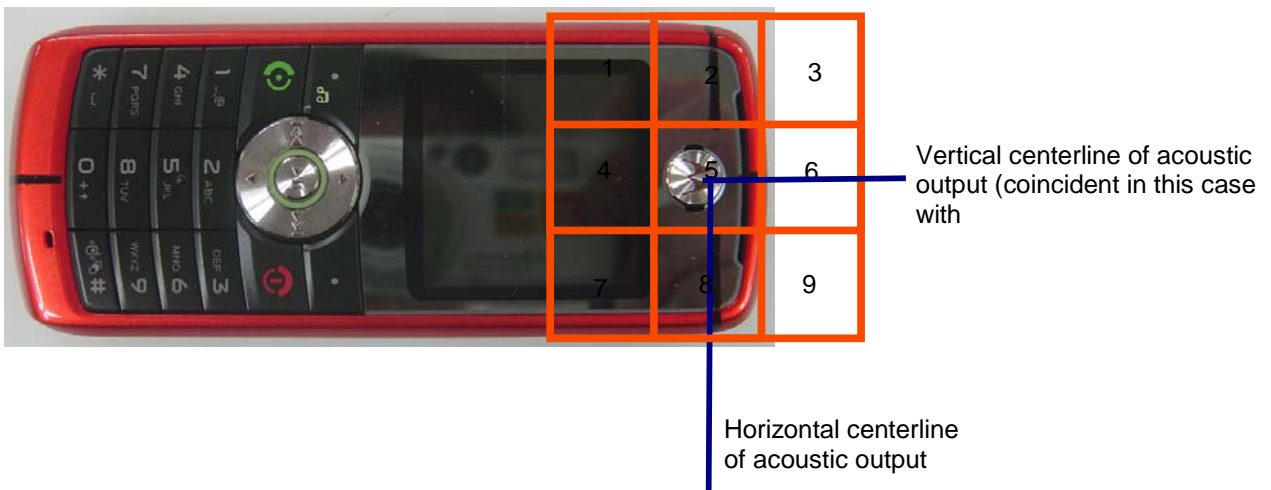


Figure A4-2. Orientation and Measurement Plane for RF Emissions Testing



Figure A4-3. Coordinate Axis for T-coil Measurements

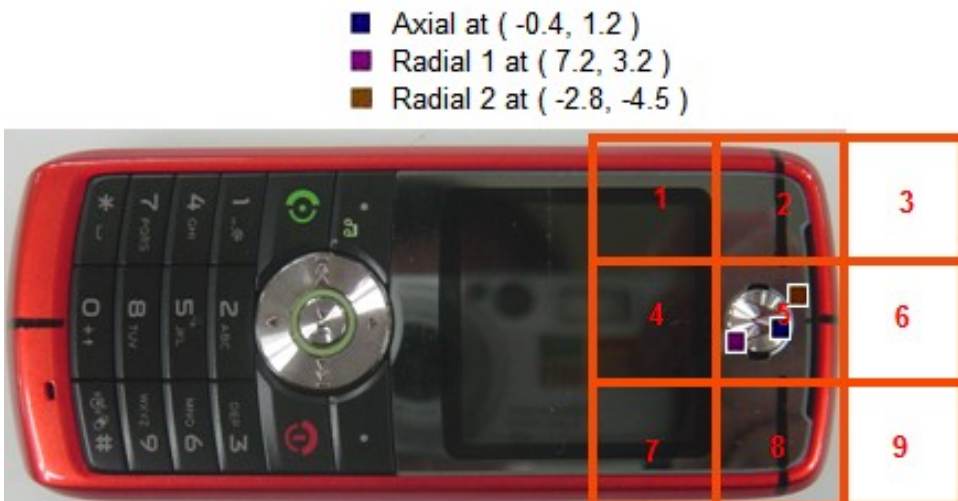
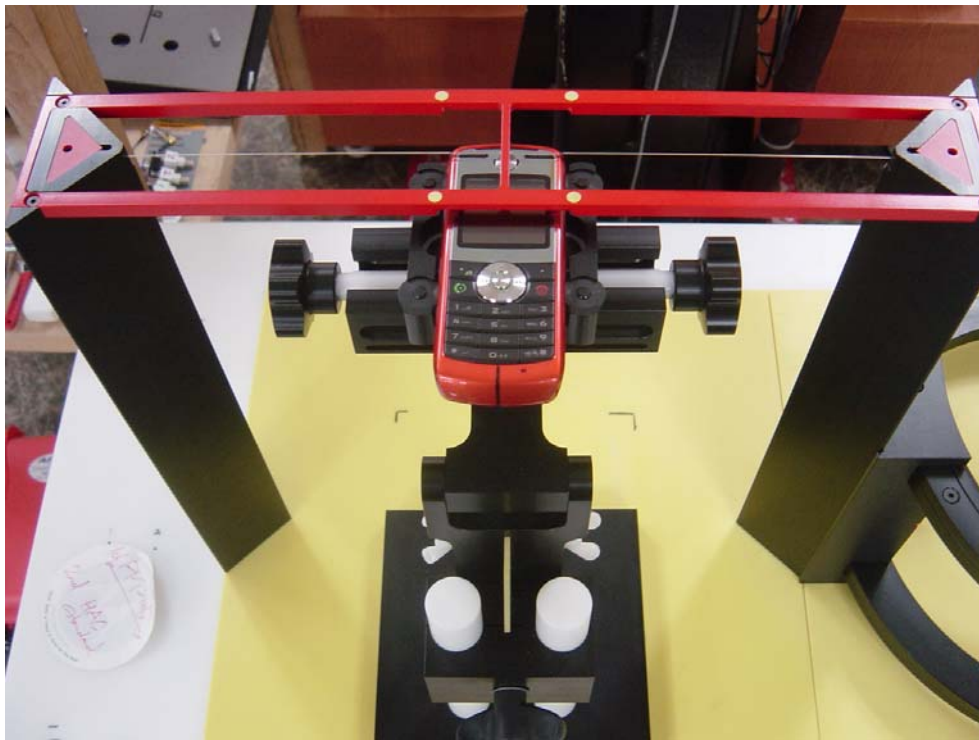
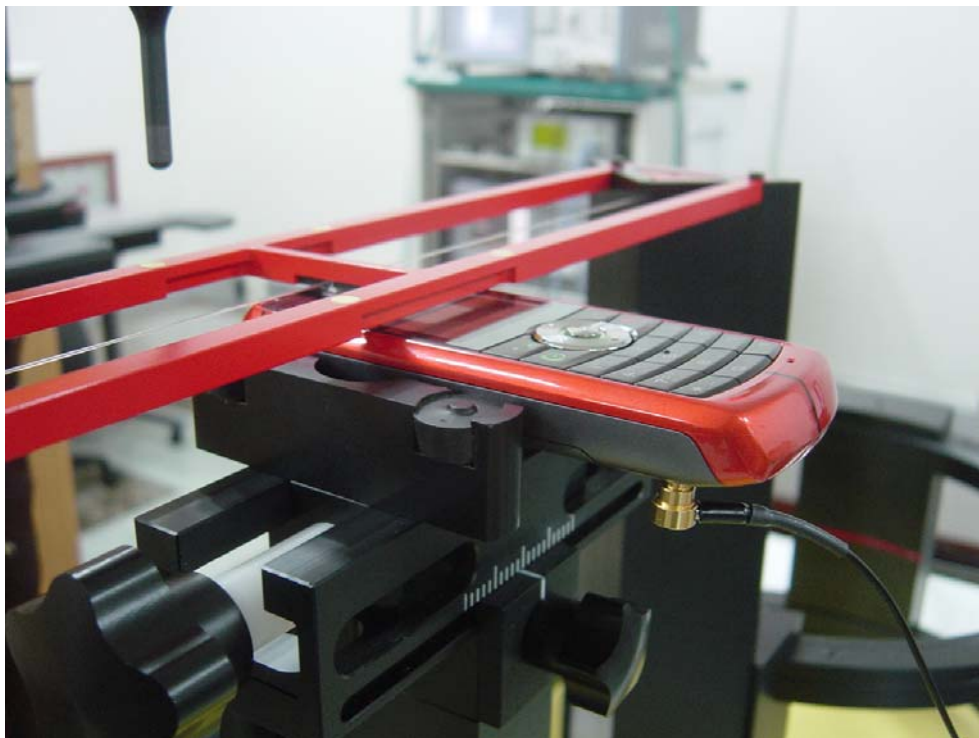


Figure A4-4. Location of Measured Points for T-coil measurements



**Figure A4-5. Positioning and Measurement for T-coil ( View from the front)**



**Figure A4-6. Positioning and Measurement for T-coil ( View from the side )**

APPLICANT: MOTOROLA, INC.

FCC ID: **IHDP56HK1**

**Appendix 5**

**Motorola Uncertainty Budget**

**Table A5-1: T-Coil Uncertainty Budget, provided by SPEAG**

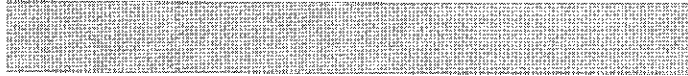
| Error Description                         | Uncertainty value (%) | Prob. Dist. | Div. | c ABM1 | c ABM2 | St.Unc ABM1 (%) | St.Unc ABM2 (%) |
|---|-----------------------|-------------|------|--------|--------|-----------------|-----------------|
| <b>PROBE SENSITIVITY</b>                  |                       |             |      |        |        |                 |                 |
| Reference level                           | 3.0                   | N           | 1    | 1      | 1      | 3.0             | 3.0             |
| AMCC geometry                             | 0.4                   | R           | 1.7  | 1      | 1      | 0.2             | 0.2             |
| AMCC current                              | 0.6                   | R           | 1.7  | 1      | 1      | 0.4             | 0.4             |
| Probe positioning during calibration      | 0.1                   | R           | 1.7  | 1      | 1      | 0.1             | 0.1             |
| Noise contribution                        | 0.7                   | R           | 1.7  | 0.0143 | 1      | 0.0             | 0.4             |
| Frequency slope                           | 5.9                   | R           | 1.7  | 0.1    | 1      | 0.3             | 3.5             |
| <b>PROBE SYSTEM</b>                       |                       |             |      |        |        |                 |                 |
| Repeatability / Drift                     | 1.0                   | R           | 1.7  | 1      | 1      | 0.6             | 0.6             |
| Linearity / Dynamic range                 | 0.6                   | R           | 1.7  | 1      | 1      | 0.4             | 0.4             |
| Acoustic noise                            | 1.0                   | R           | 1.7  | 0.1    | 1      | 0.1             | 0.6             |
| Probe angle                               | 2.3                   | R           | 1.7  | 1      | 1      | 1.4             | 1.4             |
| Spectral processing                       | 0.9                   | R           | 1.7  | 1      | 1      | 0.5             | 0.5             |
| Integration time                          | 0.6                   | N           | 1    | 1      | 5      | 0.6             | 3.0             |
| Field disturbance                         | 0.2                   | R           | 1.7  | 1      | 1      | 0.1             | 0.1             |
| <b>TEST SIGNAL</b>                        |                       |             |      |        |        |                 |                 |
| Reference signal spectral response        | 0.6                   | R           | 1.7  | 0      | 1      | 0.0             | 0.4             |
| <b>POSITIONING</b>                        |                       |             |      |        |        |                 |                 |
| Probe positioning                         | 1.9                   | R           | 1.7  | 1      | 1      | 1.1             | 1.1             |
| Phantom thickness                         | 0.9                   | R           | 1.7  | 1      | 1      | 0.5             | 0.5             |
| DUT positioning **                        | 4.0                   | R           | 1.7  | 1      | 1      | 2.4             | 2.4             |
| <b>EXTERNAL CONTRIBUTIONS</b>             |                       |             |      |        |        |                 |                 |
| RF interference                           | 0.0                   | R           | 1.7  | 1      | 1      | 0.0             | 0.0             |
| Test signal variation                     | 2.0                   | R           | 1.7  | 1      | 1      | 1.2             | 1.2             |
| <b>COMBINED UNCERTAINTY</b>               |                       |             |      |        |        |                 |                 |
| <b>Combined Std.Uncert. (ABM field)</b>   |                       |             |      |        |        | 4.6             | 6.5             |
| <b>Expanded Std. Uncertainty, k=2 (%)</b> |                       |             |      |        |        | 9.1             | 12.9            |

\*\* based on repeat measurements of reference unit

**Appendix 6**

**Audio Magnetic Probe Certificate**

Client

**Certificate of test and configuration**

|                       |  |
|-----------------------|--|
| Item                  | Audio Magnetic 1D Field Probe<br><b>AM1DV2</b>         |
| Type No               | SP AM1 001 AF  |
| Series No             | <b>1046</b>  |
| Manufacturer / Origin | Schmid & Partner Engineering AG<br>Zurich, Switzerland |

**Description of the item**

The Audio Magnetic Field Probe is a fully shielded magnetic field probe for the frequency range from 100 Hz to 20 kHz. The pickup coil is compliant with the dimensional requirements of [1]. The probe includes a symmetric 40dB low noise amplifier for the signal available at the shielded 3 pin connector at the side. Power is supplied via the same connector (phantom power supply) and monitored via the LED near the connector. The 7 pin connector at the end of the probe does not carry any signals, but determines the angle of the sensor when mounted on the DAE. The probe supports mechanical detection of the surface. The single sensor in the probe is arranged in a tilt angle allowing measurement of 3 orthogonal field components when rotating the probe by 120° around its axis. It is aligned with the perpendicular component of the field, if the probe axis is tilted 35.3° above the measurement plane, using the connector rotation and Sensor angle stated below.

The probe is fully RF shielded when operated with the matching signal cable (shielded) and allows measurement of audio magnetic fields in the close vicinity of RF emitting wireless devices according to [1] without additional shielding.

**Handling of the item**

The probe is manufactured from stainless steel. In order to maintain the performance and calibration of the probe, it must not be opened. The probe is designed for operation in air and shall not be exposed to humidity or liquids. For proper operation of the surface detection and emergency stop functions in the DASY4 system, the probe must be operated with the special probe cup provided (larger diameter).

**Functional test**

The probe configuration data were evaluated after a functional test including amplification, dynamic range and RF immunity.

**DASY4 configuration data for the probe**

| Configuration item | Condition  | Configuration Data | Dimension |
|--------------------|--|--------------------|-----------|
| Overall length     | mounted on DAE in DASY4 system   | <b>296</b>         | mm        |
| Tip diameter       | at the cylindrical part  | 6                  | mm        |
| Sensor offset      | center of sensor, from tip   | 3                  | mm        |
| Connector rotation | Evaluated in homogeneous 1 kHz magnetic field generated with AMCC Helmholtz Calibration Coil | <b>353.1</b>       | °         |
| Sensor angle       |  | <b>-1.68</b>       | °         |
| Sensitivity        | typical, at 1 kHz  | 0.0672             | V / (A/m) |

**Standards**

[1] ANSI-C63.19-2006

Date

26.09.2006

Signature

**Appendix 7**

**AMCC Certificate (Helmholz Coil)**

## Certificate of conformity

|                       |  |
|-----------------------|--|
| Item                  | Audio Magnetic Calibration Coil<br>AMCC                |
| Type No               | <b>SD HAC P02 A</b>                                    |
| Series No             | 1001 ff.   |
| Manufacturer / Origin | Schmid & Partner Engineering AG<br>Zurich, Switzerland |

### Description of the item

The Audio Magnetic Calibration coil (AMCC) is a Helmholtz Coil designed according to standard [1], section D.9 for calibration of the AM1D probe. Two horizontal coils are positioned above a non-metallic base plate and generate a homogeneous magnetic field in the z direction (normal to it).

### Configuration

The AMCC consists of two parallel coils of 20 turns with radius 143 mm connected in parallel in a distance of 143 mm. With this design, a current of 10 mA produces a field of 1 A/m.

The DC input resistance at the input BNC socket is adjusted by a series resistor to a DC resistance of approximately 50 Ohm. The voltage required to produce a field of 1 A/m is consequently approx. 500 mV.

To current through the coil is monitored via a shunt resistor of 10 Ohm +/- 1%. The voltage is available on a BNO socket with 100 mV corresponding to 1 A/m.

### Handling of the item

The coil shall be positioned in a non-metallic environment to avoid distortion of the magnetic field.

### Tests

| Test                 | Requirement  | Details   | Units tested  |
|----------------------|--|---|---------------|
| Number of turns      | N = 20 per coil  | Resistance measurement                                      | all           |
| Orientation of coils | parallel coils with same direction of windings                                       | Magnetic field variation in the AMCC axis                   | all           |
| Coil radius          | r = 143 mm   | mechanical dimension  | First article |
| Coil distance        | d = 143 mm<br>distance between coil centers  | mechanical dimension  | First article |
| Input resistance     | 51.7 +/- 2 Ohm   | DC resistance at BNC input connector                        | all           |
| Shunt resistance     | R = 10.0 Ohm +/- 1 %   | DC resistance at BNO output connector                       | all           |
| Shunt sensitivity    | Hc = 1 A/m per 100 mV according to formula<br>$Hc = (U / R) * N / r / (1.25^{*1.5})$ | Field measurement compared with Narda ELT400 + BN2300/90.10 | First article |

### Standards

[1] ANSI PC63.19-2006 Draft 3.12

### Conformity

Based on the tests above, we certify that this item is in compliance with the requirements of [1].

Date

22.5.2006

Stamp / Signature

**s p e a g**

Schmid & Partner Engineering AG  
 Zeughausstrasse 43, 8004 Zurich, Switzerland  
 Phone +41 1 245 9700, Fax +41 1 245 9779  
 info@speag.com, http://www.speag.com

**Appendix 8**

**HAC Distribution plots for E-Field and H-Field**

# Test Laboratory: Motorola GSM850 E-Field

**Serial: 01138000000375**

Procedure Notes: Pwr Step: 05(OTA); Antenna Position: Internal

Communication System: GSM 850; Frequency: 824.2 MHz; Channel Number: 128; Duty Cycle: 1:8

Medium: Air; Medium parameters used:  $\sigma = 0$  mho/m,  $\epsilon_r = 1$ ;  $\rho = 0$  kg/m<sup>3</sup>

DASY4 Configuration:

- Probe: ER3DV6R - SN2247; ConvF(1, 1, 1); Calibrated: 04/18/2007
- Sensor-Surface: (Fix Surface)
- Electronics: DAE3 Sn385; Calibrated: 03/14/2007
- Phantom: PCS-8, HAC Test Arch with Coil; Type: SD HAC P01 BB; Serial: 1072;
- Measurement SW: DASY4, V4.7 Build 53; Postprocessing SW: SEMCAD, V1.8 Build 172

## E Scan - ER sensor tip 10mm above WD Ref/LOW CH, Hearing Aid Compatibility Test (101x101x1):

Measurement grid: dx=5mm, dy=5mm

Maximum value of peak Total field = 241.2 V/m

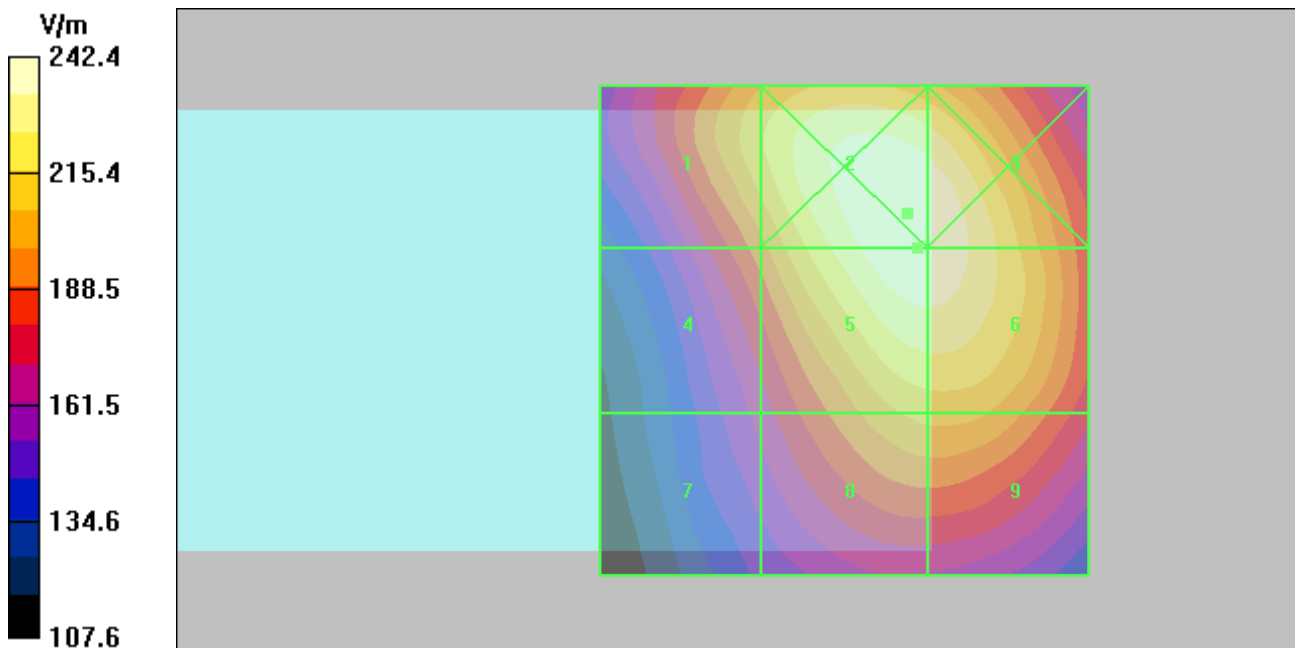
Probe Modulation Factor = 2.82

Reference Value = 78.4 V/m; Power Drift = 0.072 dB

**Hearing Aid Near-Field Category: M3 (AWF -5 dB)**

Peak E-field in V/m

|                        |                        |                        |
|------------------------|------------------------|------------------------|
| Grid 1<br><b>214.7</b> | Grid 2<br><b>242.4</b> | Grid 3<br><b>241.6</b> |
| Grid 4<br><b>194.8</b> | Grid 5<br><b>241.2</b> | Grid 6<br><b>240.9</b> |
| Grid 7<br><b>165.9</b> | Grid 8<br><b>209.6</b> | Grid 9<br><b>210.1</b> |



# Test Laboratory: Motorola GSM1900 E-Field

**Serial: 011380000000375 ;**

Procedure Notes: Pwr Step: 00(OTA); Antenna Position: Internal

Communication System: GSM 1900; Frequency:1880 MHz; Channel Number: 661; Duty Cycle: 1:8

Medium: Air; Medium parameters used:  $\sigma = 0$  mho/m,  $\epsilon_r = 1$ ;  $\rho = 0$  kg/m<sup>3</sup>

DASY4 Configuration:

- Probe: ER3DV6R - SN2247; ConvF(1, 1, 1); Calibrated: 04/18/2007
- Sensor-Surface: (Fix Surface)
- Electronics: DAE3 Sn385; Calibrated: 03/14/2007
- Phantom: PCS-8, HAC Test Arch with Coil; Type: SD HAC P01 BB; Serial: 1072;
- Measurement SW: DASY4, V4.7 Build 53; Postprocessing SW: SEMCAD, V1.8 Build 172

## E Scan - ER sensor tip 10mm above WD Ref 2/MID CH, Hearing Aid Compatibility Test (101x101x1):

Measurement grid:dx=5mm, dy=5mm

Maximum value of peak Total field = 79.1 V/m

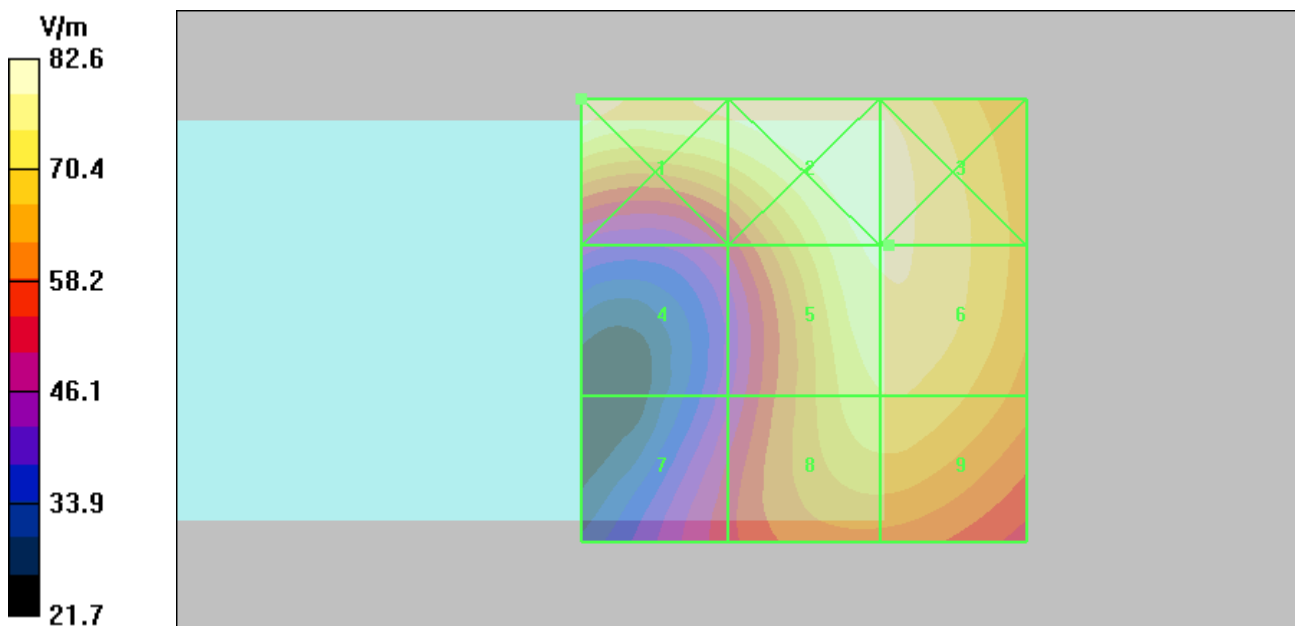
Probe Modulation Factor = 2.82

Reference Value = 23.9 V/m; Power Drift = 0.187 dB

**Hearing Aid Near-Field Category: M3 (AWF -5 dB)**

Peak E-field in V/m

|        |        |        |
|--------|--------|--------|
| Grid 1 | Grid 2 | Grid 3 |
| 82.6   | 81.0   | 80.4   |
| Grid 4 | Grid 5 | Grid 6 |
| 52.0   | 79.1   | 79.1   |
| Grid 7 | Grid 8 | Grid 9 |
| 53.1   | 74.2   | 74.6   |



# Test Laboratory: Motorola GSM850 H-Field

**Serial: 01138000000375**

Procedure Notes: Pwr Step: 05(OTA) Antenna Position: Internal

Communication System: GSM 850; Frequency: 848.8 MHz; Channel Number: 251; Duty Cycle: 1:8

Medium: Air; Medium parameters used:  $\sigma = 0$  mho/m,  $\epsilon_r = 1$ ;  $\rho = 0$  kg/m<sup>3</sup>

DASY4 Configuration:

- Probe: H3DV6 - SN6063; ; Calibrated: 04/18/2007
- Sensor-Surface: (Fix Surface)
- Electronics: DAE4 Sn656; Calibrated: 07/04/2007
- Phantom: PCS-8, HAC Test Arch with Coil; Type: SD HAC P01 BB; Serial: 1072;
- Measurement SW: DASY4, V4.7 Build 53; Postprocessing SW: SEMCAD, V1.8 Build 172

## H Scan - H3DV6 sensor tip 10mm above WD Ref/Hearing Aid Compatibility Test (101x101x1):

Measurement grid: dx=5mm, dy=5mm

Maximum value of peak Total field = 0.631 A/m

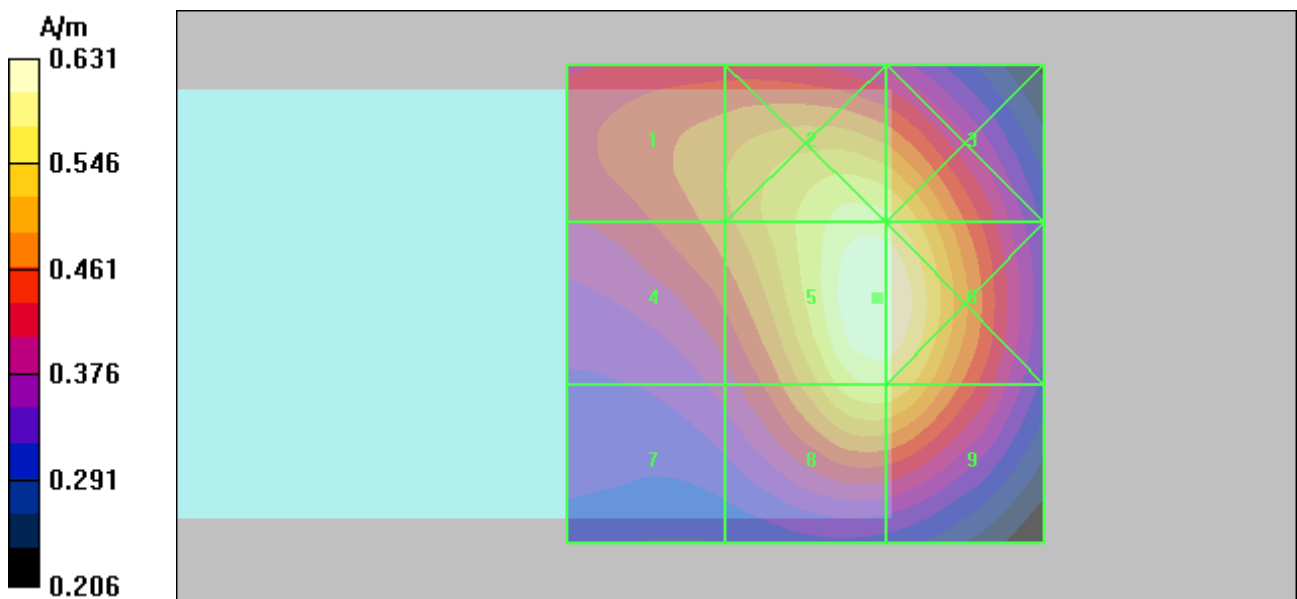
Probe Modulation Factor = 2.36

Reference Value = 0.264 A/m; Power Drift = -0.031 dB

**Hearing Aid Near-Field Category: M3 (AWF -5 dB)**

Peak H-field in A/m

|              |              |              |
|--------------|--------------|--------------|
| Grid 1       | Grid 2       | Grid 3       |
| <b>0.489</b> | <b>0.592</b> | <b>0.586</b> |
| Grid 4       | Grid 5       | Grid 6       |
| <b>0.480</b> | <b>0.631</b> | <b>0.630</b> |
| Grid 7       | Grid 8       | Grid 9       |
| <b>0.391</b> | <b>0.575</b> | <b>0.572</b> |



# Test Laboratory: Motorola GSM1900 H-Field

**Serial: 011380000000375 ;**

Procedure Notes: Pwr Step: 00(OTA): Antenna Position: Internal

Communication System: GSM 1900; Frequency: 1880 MHz; Channel Number: 661; Duty Cycle: 1:8

Medium: Air; Medium parameters used:  $\sigma = 0$  mho/m,  $\epsilon_r = 1$ ;  $\rho = 0$  kg/m<sup>3</sup>

DASY4 Configuration:

- Probe: H3DV6 - SN6063; ; Calibrated: 04/18/2007
- Sensor-Surface: (Fix Surface)
- Electronics: DAE4 Sn656; Calibrated: 07/04/2007
- Phantom: PCS-8, HAC Test Arch with Coil; Type: SD HAC P01 BB; Serial: 1072;
- Measurement SW: DASY4, V4.7 Build 53; Postprocessing SW: SEMCAD, V1.8 Build 172

## H Scan - H3DV6 sensor tip 10mm above WD Ref 2/MID CH, Hearing Aid Compatibility Test

**(101x101x1):** Measurement grid: dx=5mm, dy=5mm

Maximum value of peak Total field = 0.213 A/m

Probe Modulation Factor = 2.58

Reference Value = 0.066 A/m; Power Drift = -0.170 dB

**Hearing Aid Near-Field Category: M3 (AWF -5 dB)**

Peak H-field in A/m

|                        |                        |                        |
|------------------------|------------------------|------------------------|
| Grid 1<br><b>0.281</b> | Grid 2<br><b>0.255</b> | Grid 3<br><b>0.193</b> |
| Grid 4<br><b>0.220</b> | Grid 5<br><b>0.213</b> | Grid 6<br><b>0.166</b> |
| Grid 7<br><b>0.164</b> | Grid 8<br><b>0.155</b> | Grid 9<br><b>0.114</b> |

