



MOTOROLA



TESTING CERT # 2518.01

Exhibit 7B: SAR Test Report Photographs

Government & Public Safety EME Test Laboratory
8000 West Sunrise Blvd. Fort Lauderdale, FL. 33322

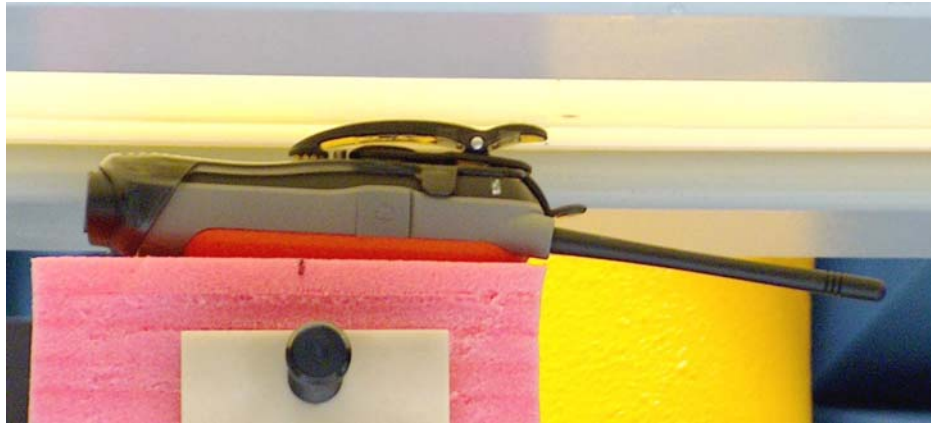


Signature on file - Stephen Whalen for DeannaZakharia
Deanna Zakharia G&PS EME Lab Senior Resource Manager, Laboratory Director

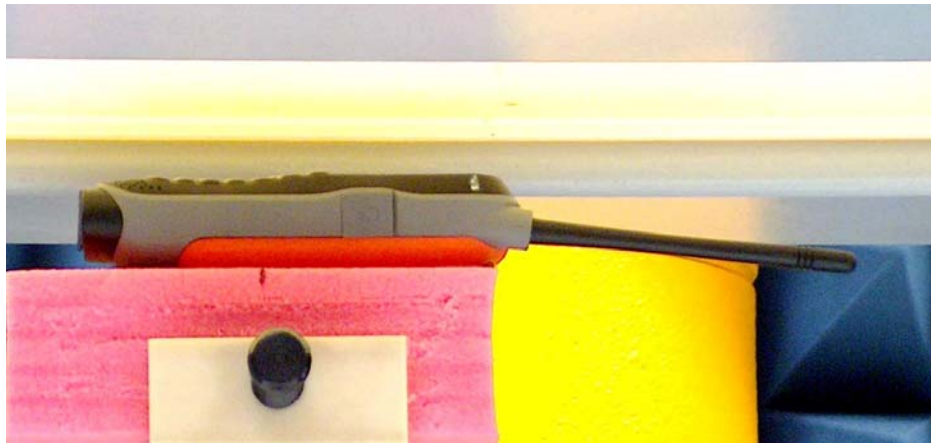
Approval Date: 6/19/08

1.0 Highest SAR Test Position per body location

1.1 Body: DUT with carry accessory model NNTN7313A against the phantom



1.2 Face: DUT w/ front side separated 2.5cm from the phantom



1.3 Head: DUT at the left ear in tilt position



2.0 Other SAR tested positions at the body

2.1 Body worn:

Figure 1: DUT with carry accessory model NNTN7313A against the phantom.
(Same position used for each attached data and audio cable accessories)

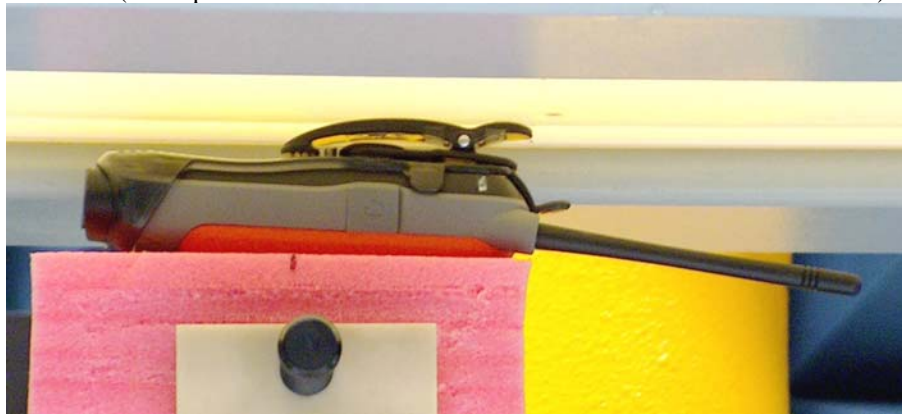


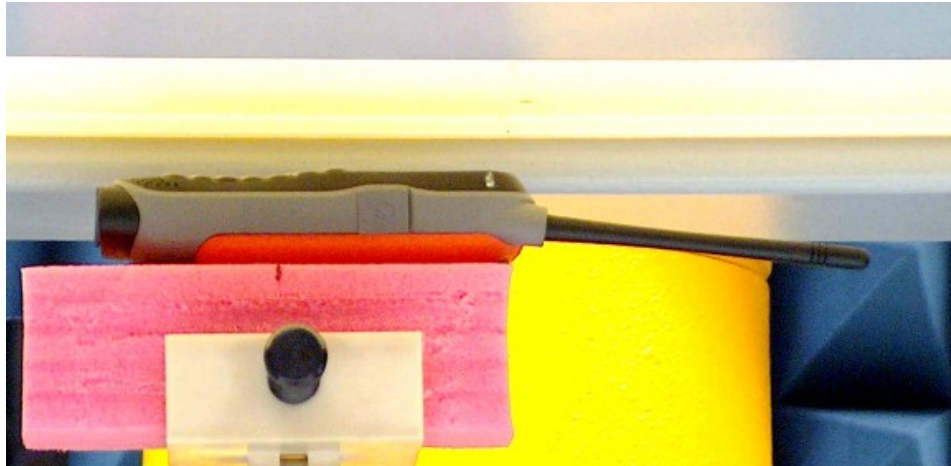
Figure 2: DUT with carry accessory model NNTN4747A against the phantom.



2.2 Back 2.5cm separation

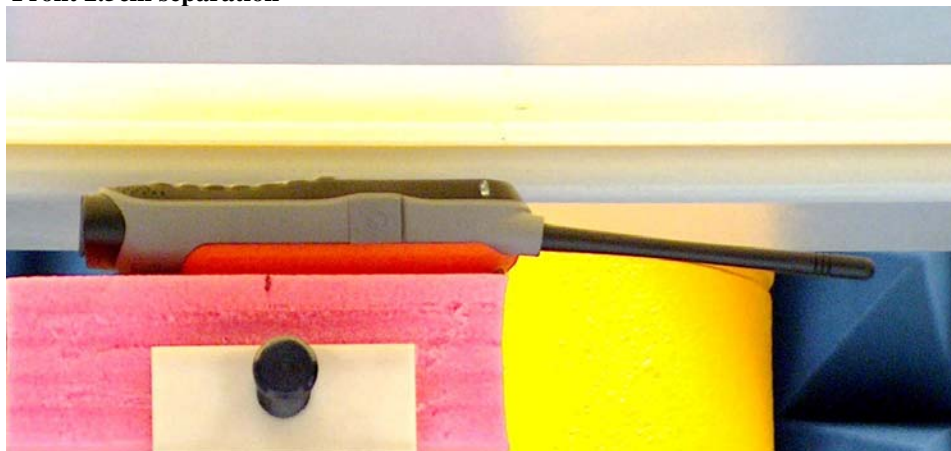


2.3 Front 2.5cm separation



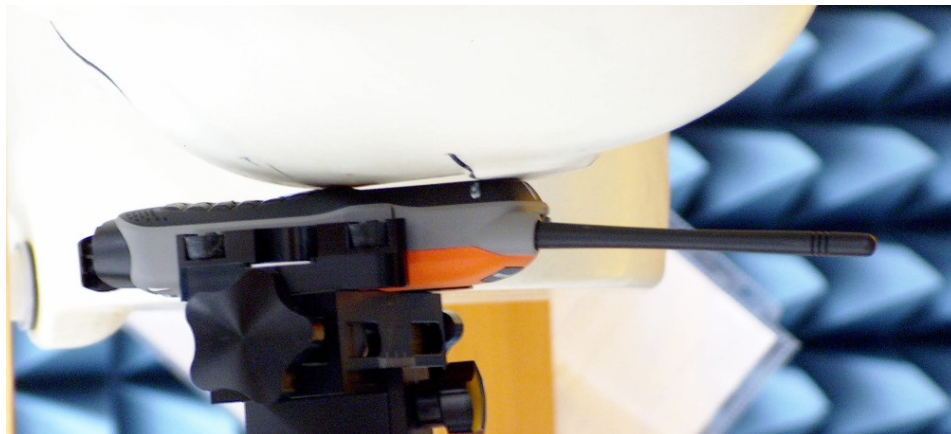
3.0 Other SAR tested position at the face

3.1 Front 2.5cm separation



4.0 Other SAR tested positions at the head

4.1 Left ear touch



4.2 Left ear tilt



4.3 Right ear touch



4.4 Right ear tilt



5.0 DUT and body worn Accessory Photos

The purpose of these photos is to illustrate the offered body-worn carry accessory(ies).

The sample that was used in the following photos represents the product used to obtain the results presented herein.

5.1 Body worn model Model NNTN7313A



Front View



Back View



Side View

5.2 Body worn model Model NNTN4747A



Front View



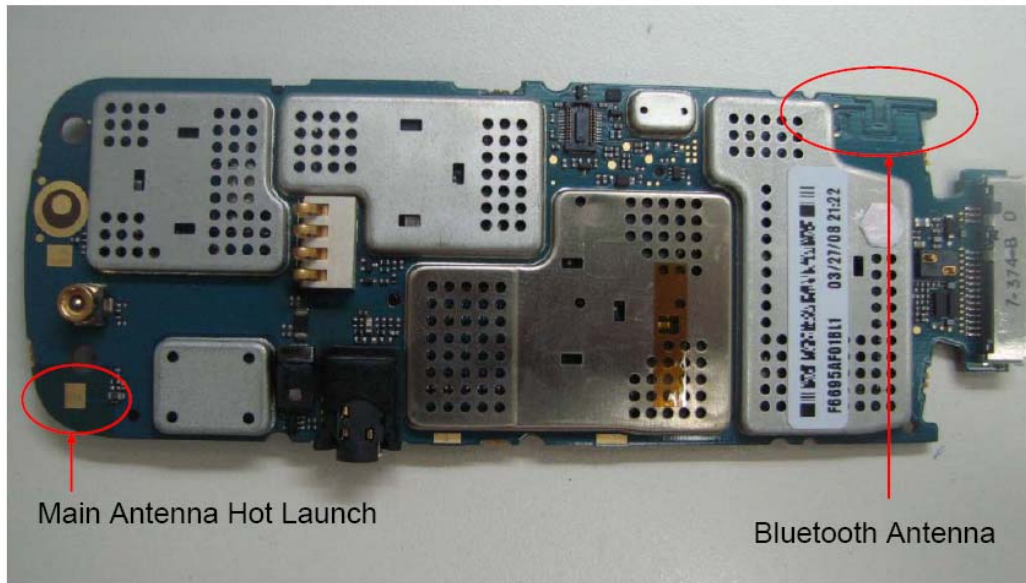
Back View



Side View

6.0 BlueTooth Antenna location

The Relative Positions of the Bluetooth and iDEN antenna



The Relative Positions of the Bluetooth and iDEN antenna

