

1 EXTERNAL PHOTOS OF TESTED EUT

Note:

The **PCX882e** board is the most complete hardware configuration of the product range:

- **VX882e** (Software limited)
- **PCX881e** (digital only, without 882 analog daughter board)
- **VX881e** (Software limited and digital only, without 882 analog daughter board)

(8 analog audio outputs and 8 analog audio inputs)

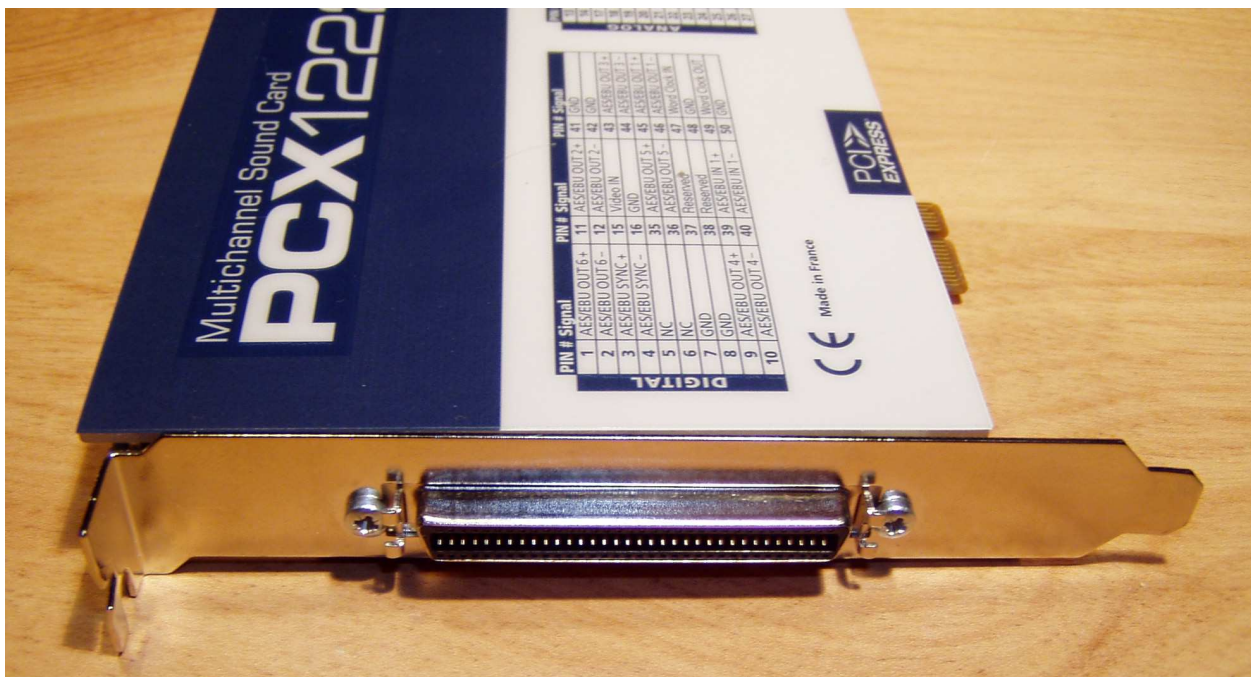
The **PCX1222e** board is the most complete hardware configuration of the product range:

- **VX1222e** (Software limited)
- **PCX1221e** (digital only, without 1222 analog daughter board)
- **VX1221e** (Software limited and digital only, without 1222 analog daughter board)

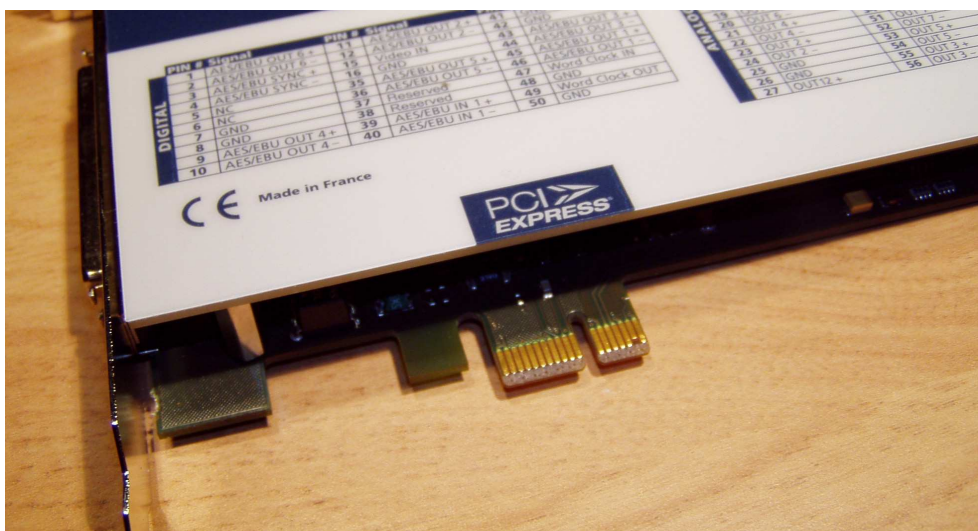
(12 analog audio outputs and 2 analog audio inputs)



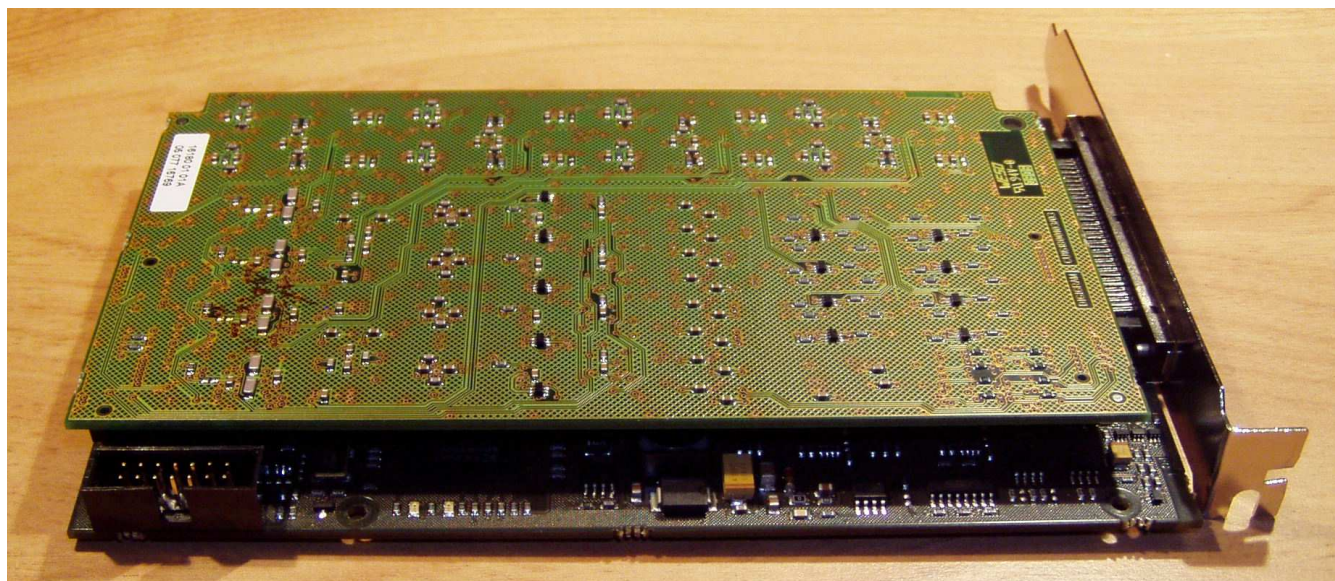




SCSI connector



PCI Express connector



Digital mother board and analog daughter board



I/O cable