

INTERNAL PHOTOS OF TESTED EUT

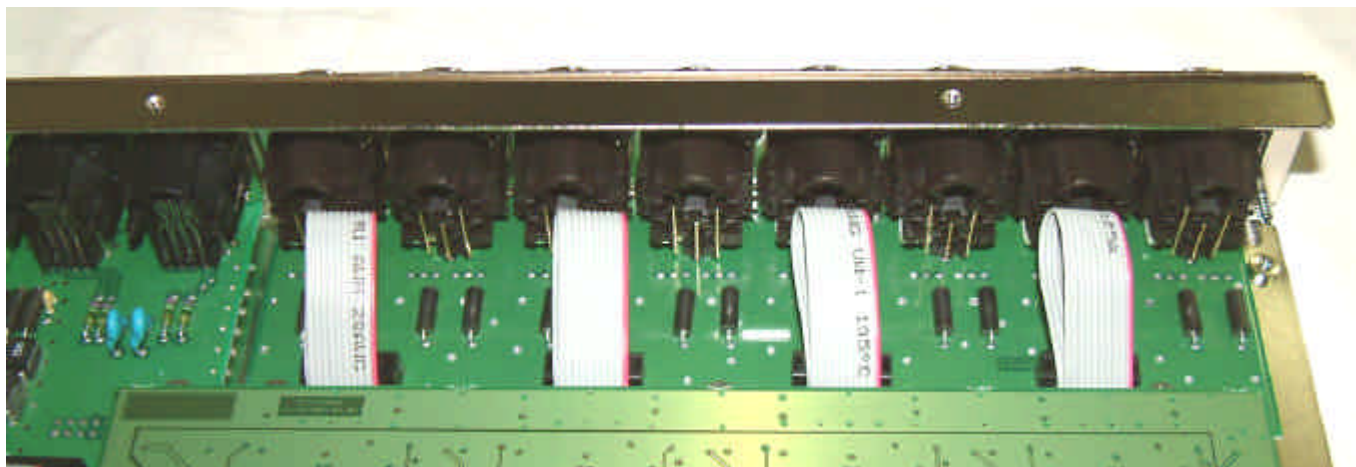
1.1 General view



General view, cover removed, front face (ES8mic- Terminal Block connectors)



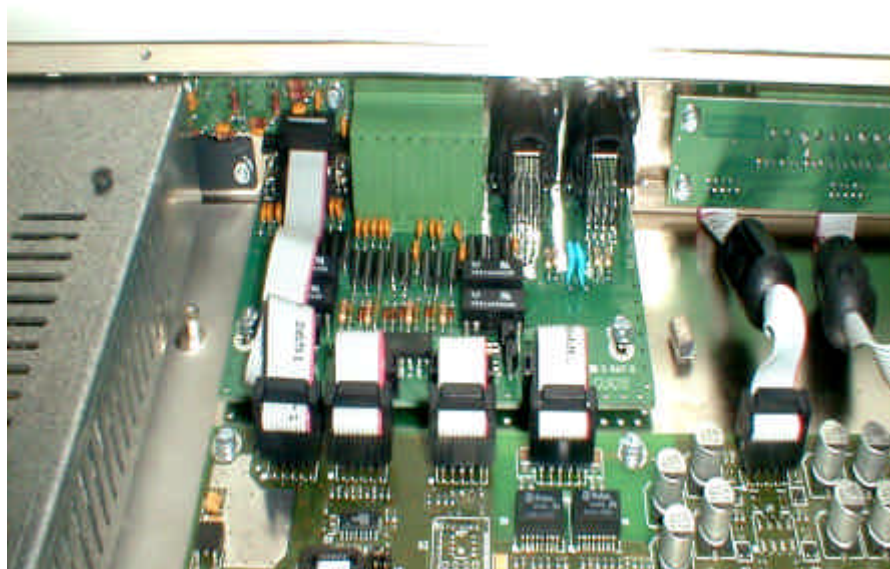
General view, cover removed, rear face (ES8mic- Terminal Block connectors)



Detail view, cover removed (ES8mic – XLR connectors board)

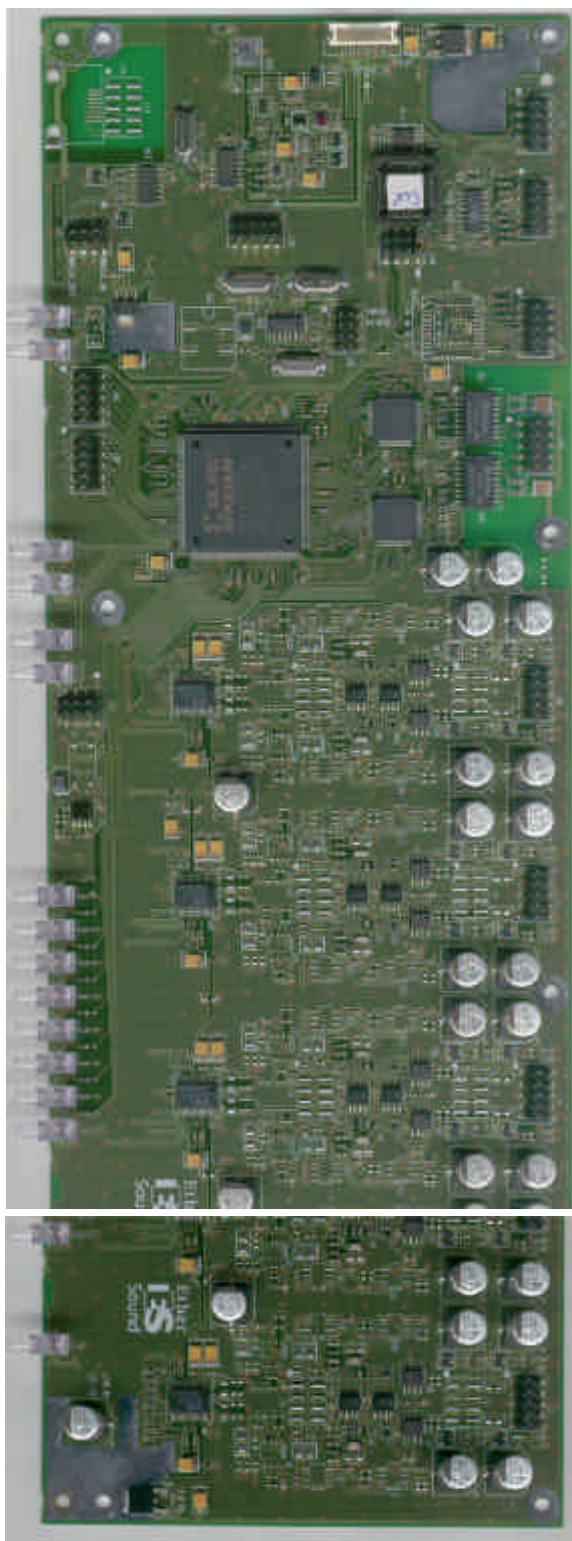


Detail view, cover removed (ES8mic – Terminal Block connectors board)

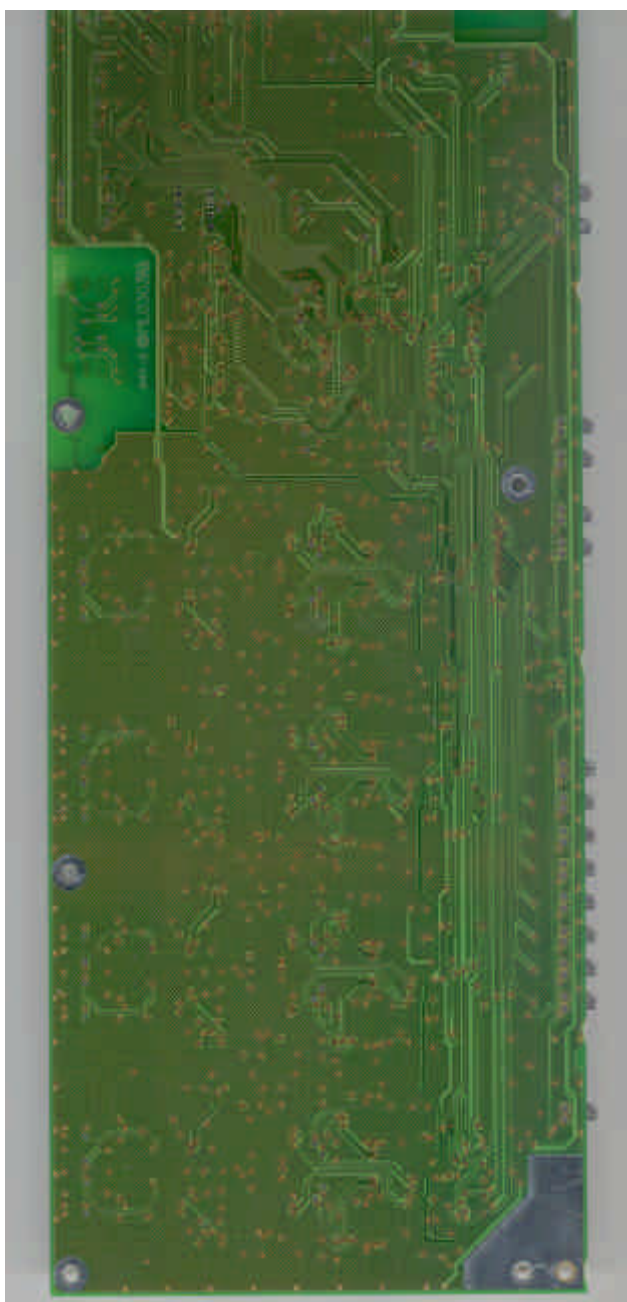
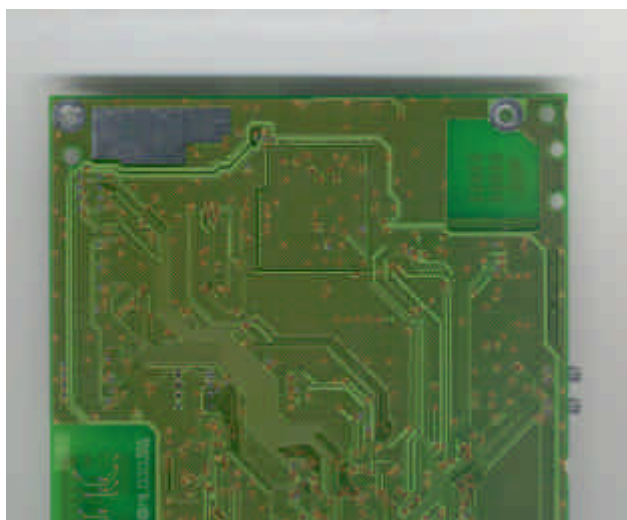


Detail view, ES8mic, Ethernet+GPIO+RS232 connector board

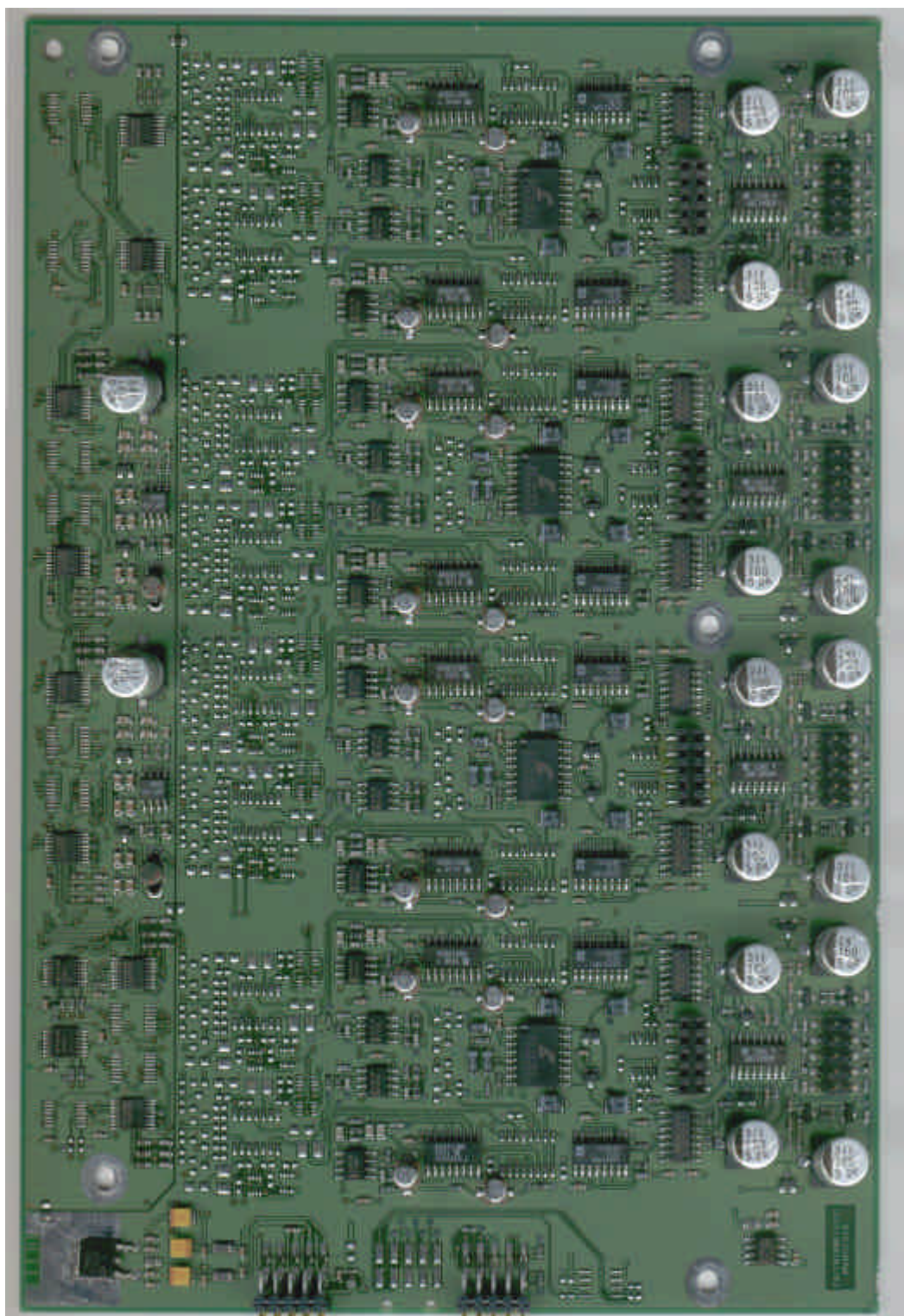
1.2 PCB view



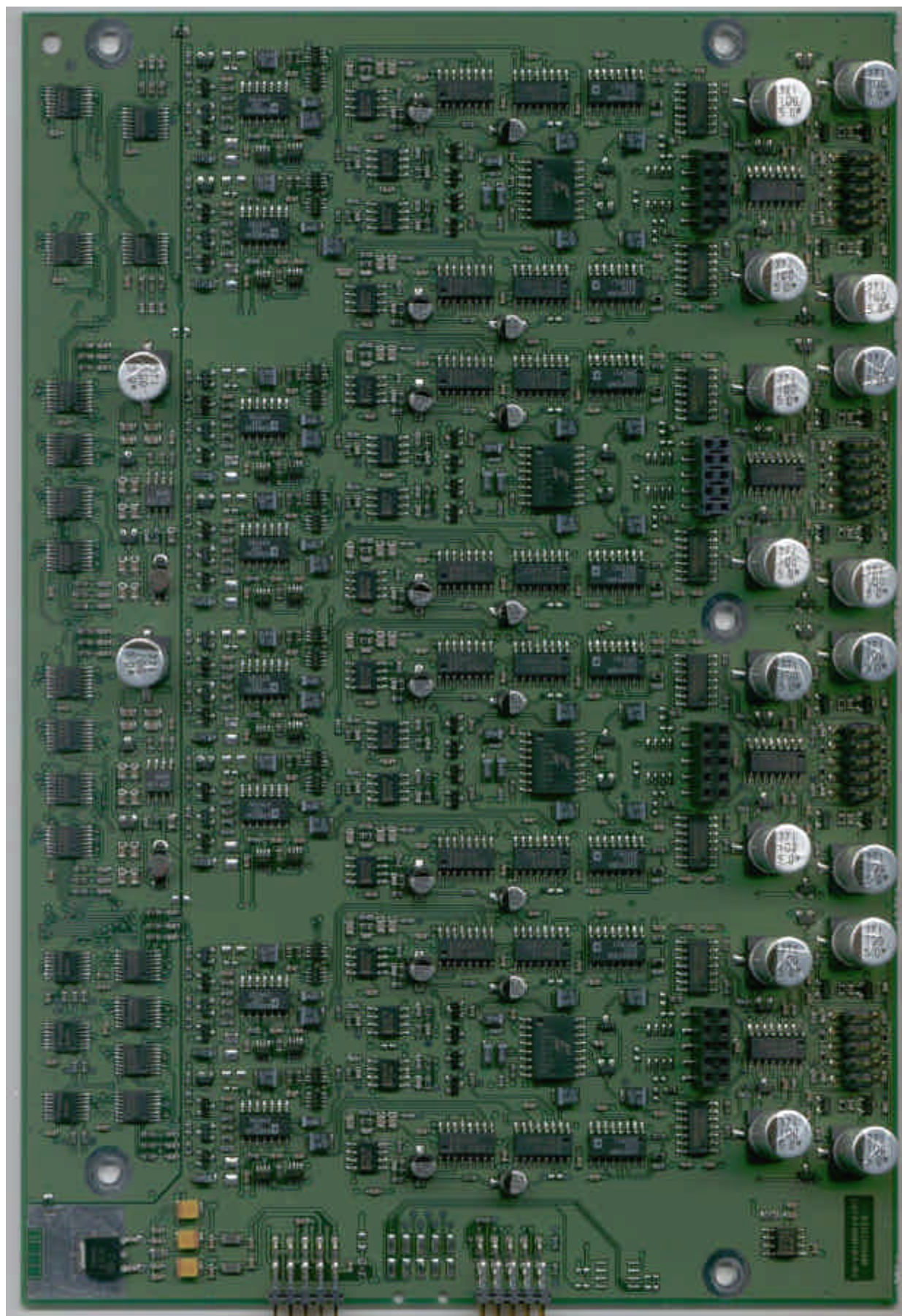
EtherSound motherboard (components view)



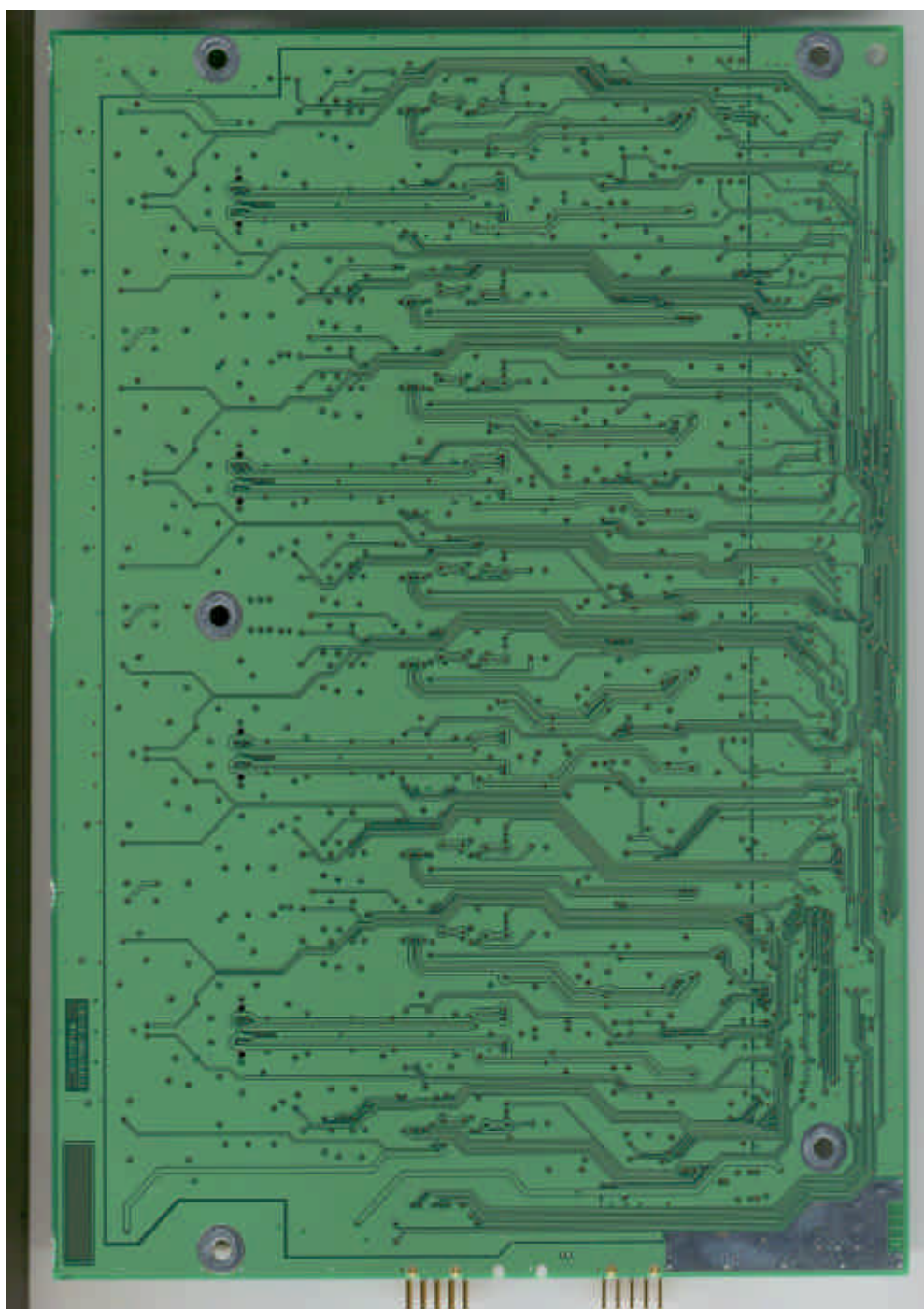
Ethersound motherboard (copper side)



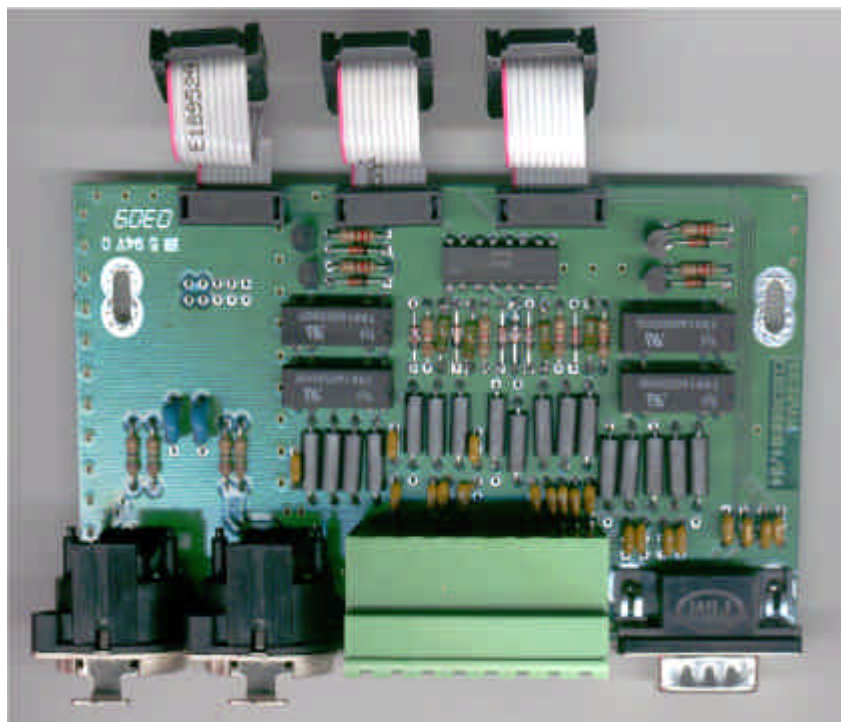
ES8mic daughter board (without Compressor-Limiter option)



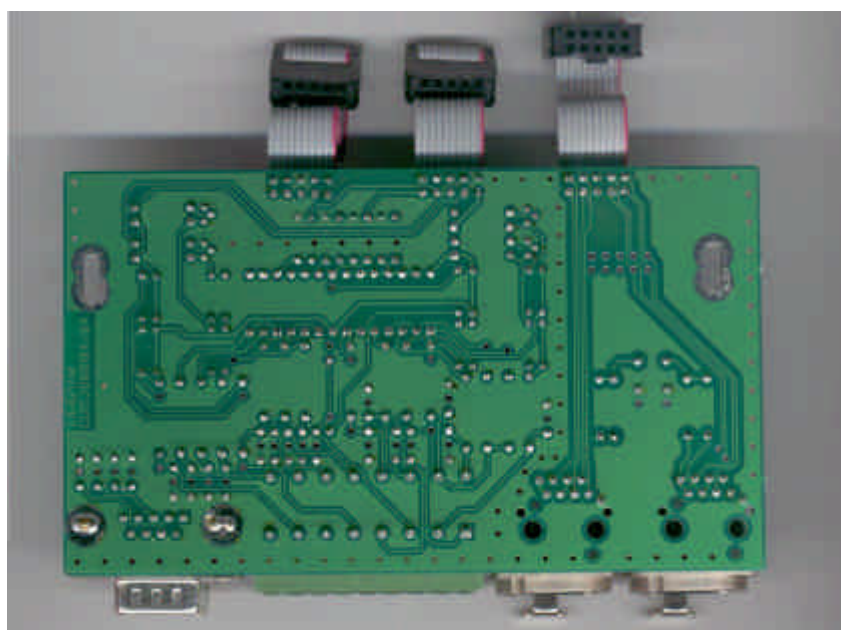
ES8mic daughter board (with Compressor-Limiter option)



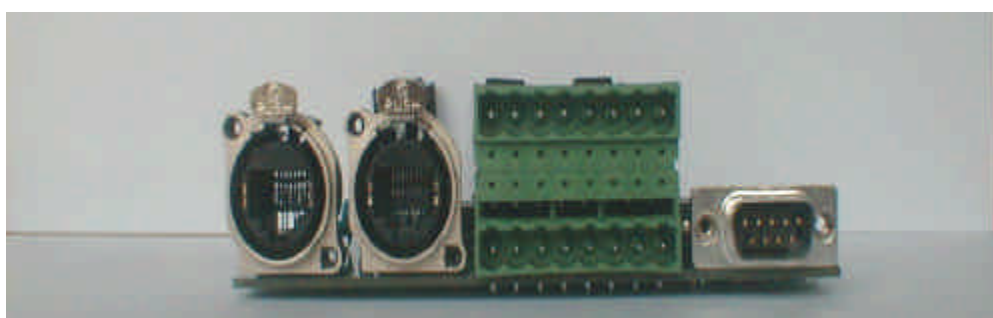
ES8mic daughter board (Copper side)



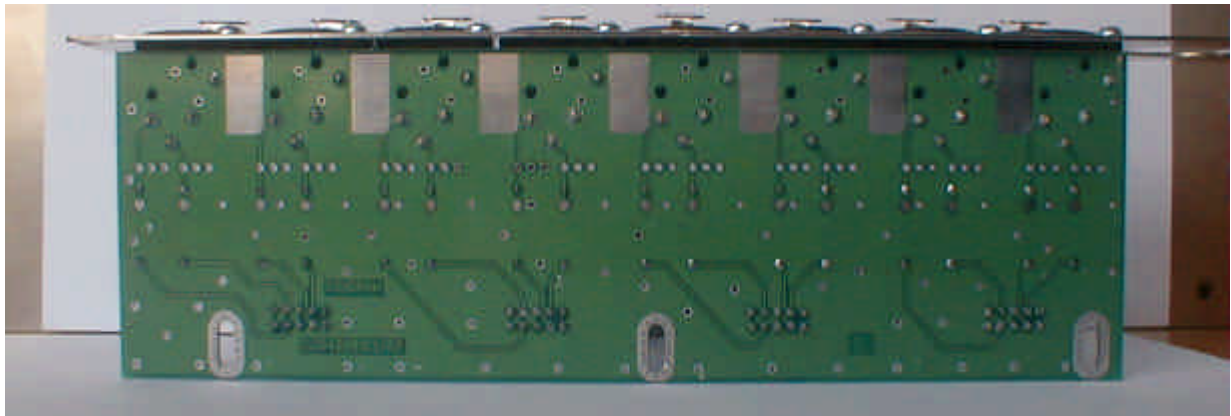
Ethernet+GPIO+RS232 connector board (Components side)



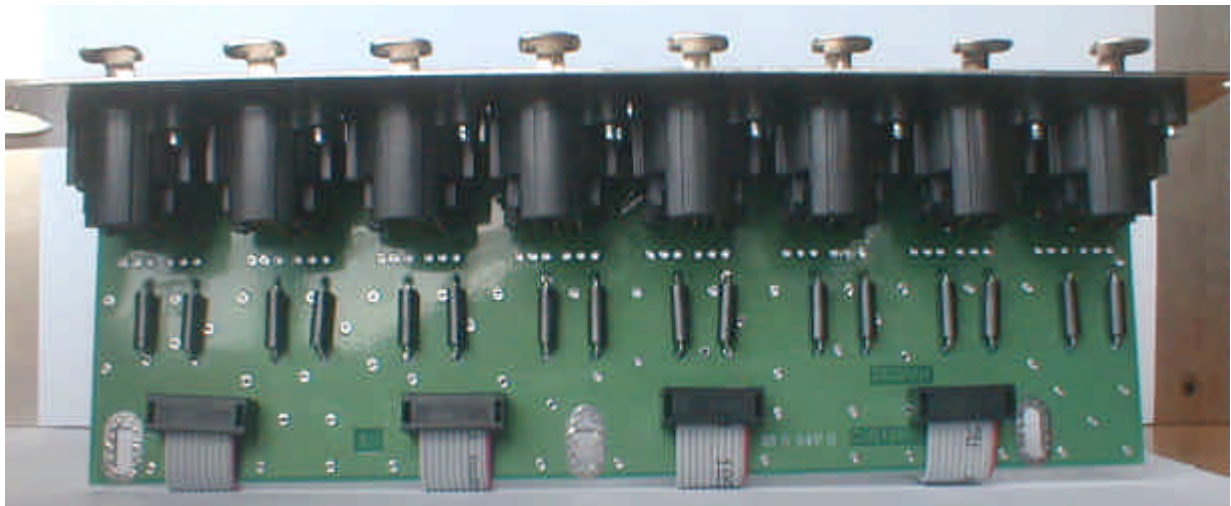
Ethernet+GPIO+RS232 connector board (Copper side)



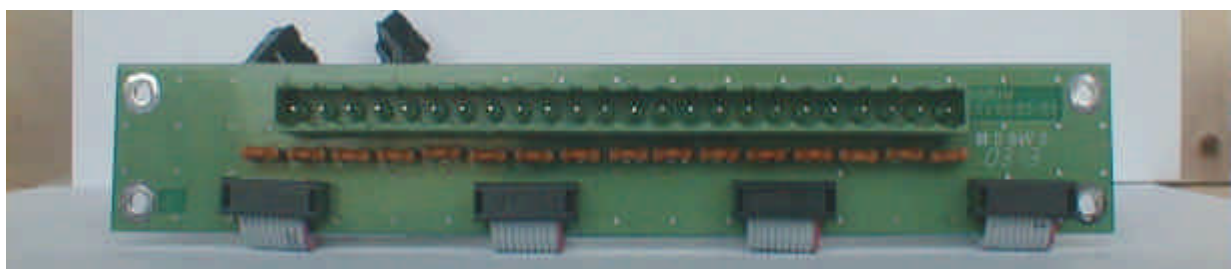
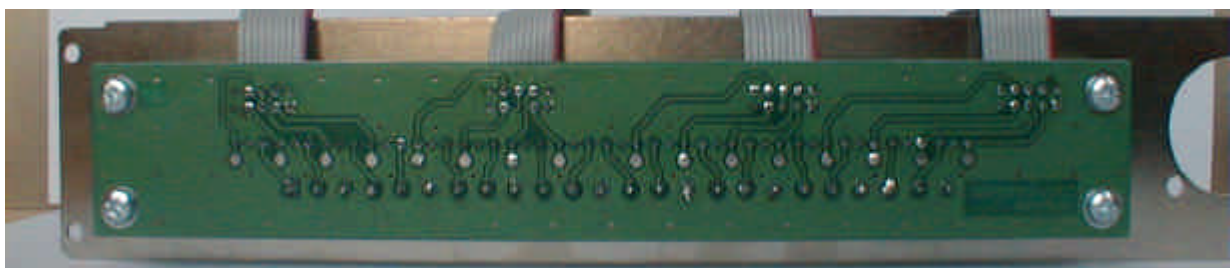
Ethernet+GPIO+RS232 connector board (Connectors)



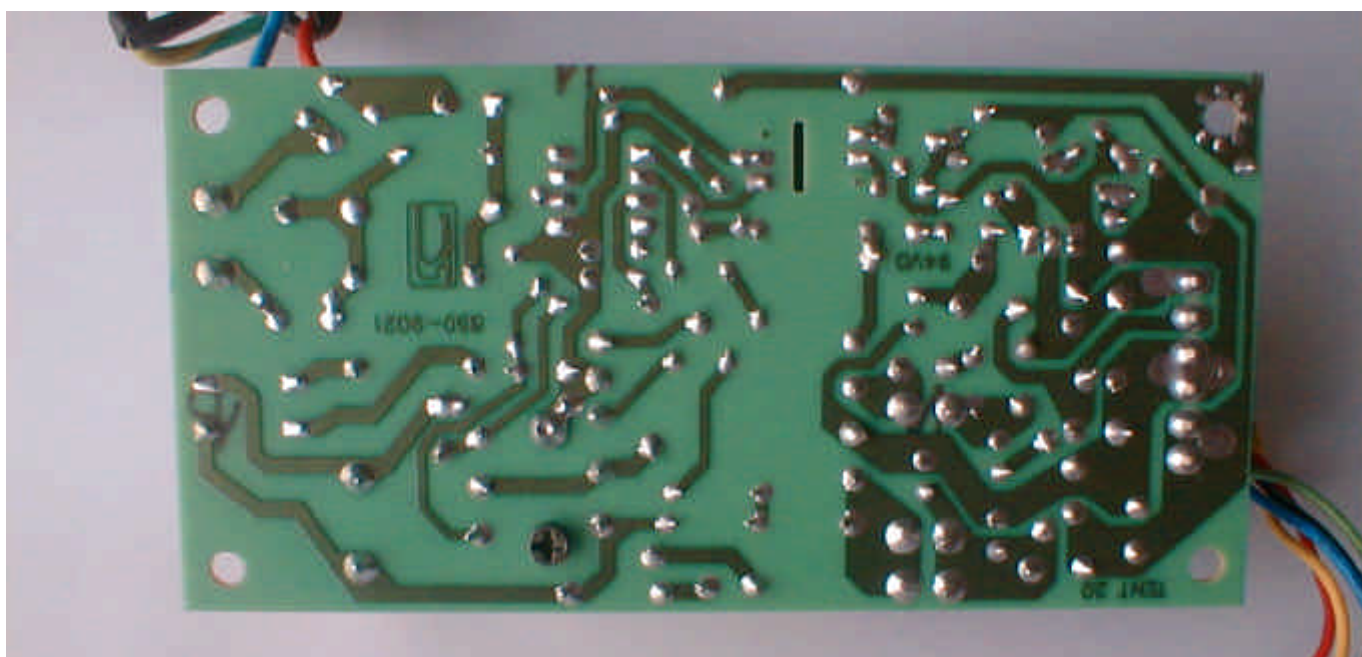
XLR connector board (ES8)



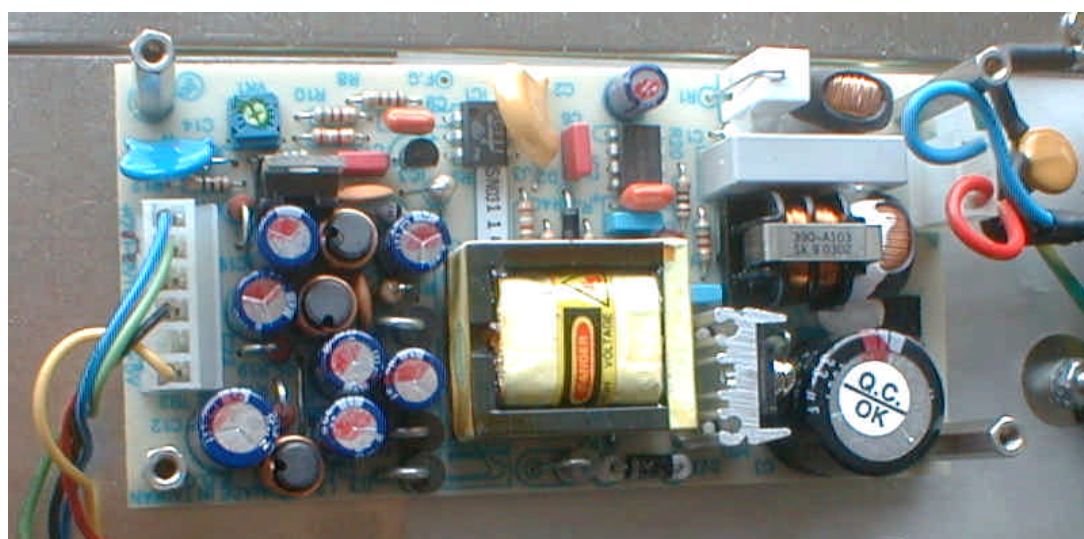
XLR connector board (ES8)



Terminal block connector board (ES8)



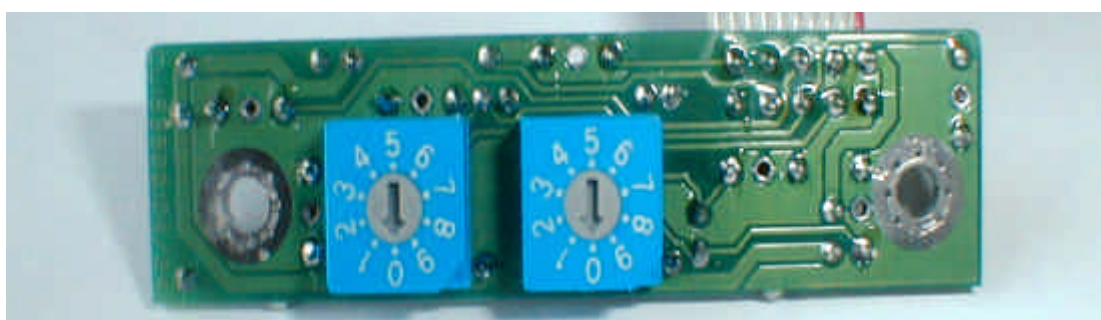
Power supply board (copper side)



Power supply board (components side)



Ethersound channel positioning board



Ethersound channel positioning board