

## Maintenance

It is important to keep the Barbie™ Wireless Video Camera as dry and clean as possible. Clean the unit with a soft cloth moistened only with mild soap and water. Stronger cleaning agents, such as benzine, thinner, or similar materials are not recommended, as they may damage the surface of the case.

Keep the Barbie™ Wireless Video Camera away from direct sunlight or sources of excessive heat.

Do not allow dirt, sand, small particles, water or other liquids to enter the Barbie™ Wireless Video Camera casing.

If the toy is to be left unused for extended time periods, such as a month or longer, remove the batteries to extend their life and to prevent leaking or corrosion.

## Questions or Comments

☎ For questions or comments regarding this or other KIDdesigns products, please call our toll-free number: **1-888-TOP-TOYS**. Please also visit our website: **www.toptoysonline.com**.

## Limited 90-Day Warranty

KIDdesigns warrants this product to be free from defects in workmanship and materials, under normal use and conditions, for a period of 90 days from the date of original purchase.

Should service be required by reason of any defect or malfunction, it is best to first return this product and all parts thereof, to the store where it was originally purchased. If you need to send the product for service, and it is during the warranty period, KIDdesigns will repair, or at its discretion, replace this product without charge (except for a \$12.00 charge for handling, packing, return UPS/postage and insurance) subject to verification of the defect or malfunction, upon delivery of this product to the Factory Service Center listed below, with proof of the date of purchase.

Before returning this product for service, replace the batteries (if applicable) with fresh ones, because exhausted or defective batteries are the most common cause of problems encountered.

### If service is still required:

1. Remove batteries (if applicable) and pack unit in a well padded, heavy corrugated box.
2. Enclose a photocopy of your sales receipt, credit card statement or other proof of the date of purchase.
3. Also enclose a check or money order payable to the order of KIDdesigns, for the sum of \$12.00.
4. Send the unit prepaid to the Factory Service Center listed below.

**NOTE:** This warranty is valid only if the product is used for the purpose for which it was designed. It does not cover (i) products which have been damaged by negligence, misuse or accident or which have been modified or repaired by unauthorized persons (ii) cracked or broken cabinets of units damaged by excessive heat (iii) damage to tape cassettes (if applicable) (iv) the cost of shipping this product to the Factory Service Center and its return to you.

This warranty is valid only in the United States of America and does not extend to owners of the product subsequent to the original purchaser. Any applicable implied warranties are also limited to 90 days, and KIDdesigns will not be liable for consequential damages. (Some states do not allow limitations on implied warranties or exclusion of consequential damages, so these restrictions may not apply to you.) This warranty gives you specific legal rights, and you may also have other rights which vary from state to state.

Send unit to:

Consumer Repair Department  
**KIDdesigns Inc.**  
1330 Goodyear Dr  
El Paso, Texas 79936-6420

*BARBIE is a trademark owned by  
and used under license from Mattel, Inc.  
© 2005 Mattel, Inc. All Rights Reserved.*

*Manufactured and Distributed by KIDdesigns, Inc.  
Rahway, NJ 07065*

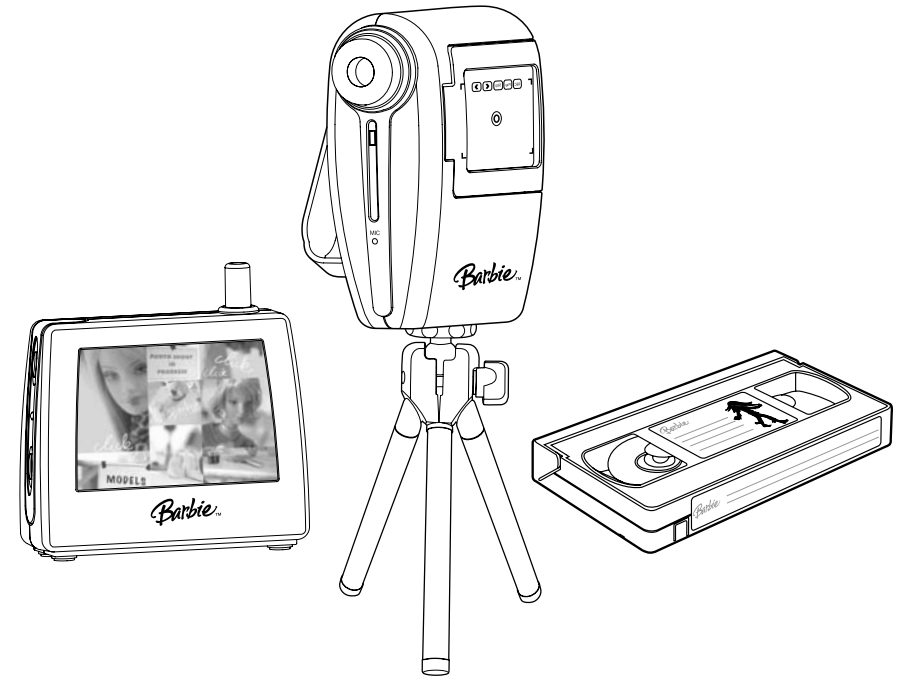
Printed in China  
Patent Pending

BE679-052505-0

# Barbie™

MODEL BE-679

## Wireless Video Camera



## CAUTION-ELECTRICALLY OPERATED PRODUCT

**NOT RECOMMENDED FOR CHILDREN UNDER 6 YEARS OF AGE. AS WITH ALL ELECTRIC PRODUCTS, PRECAUTIONS SHOULD BE OBSERVED DURING HANDLING AND USE TO PREVENT ELECTRIC SHOCK. AC120V, 60Hz 8 WATTS UL LISTED.**

### Important Message to Consumers

Thank you for purchasing one of the Barbie™ brand's many top-quality electronic products. We would appreciate it if you take a few moments to read through these instructions. This will help you explain the safe and proper way to use this toy, and to help give it the long-lasting life that Barbie™ branded products are designed for. We strongly recommend that parents regularly examine this product, all included accessories, and the adapter cord for excessive wear, fraying, cracks, or other damage that may result in the risk of fire, electric shock, or injury. In the event of such conditions, please cease using the product and refer to the Limited Warranty included in this booklet. Please keep these instructions for future reference as they contain important information.

\*Adult needed to connect camera base to TV or VCR. VCR required in order to record. The video camera alone does not record.

## Table of Contents

<b>What's In The Box</b>	
Barbie™ Wireless Video Camera .....	page 2
Barbie™ Camera Base .....	page 2
Accessories (Tripod, VCR Tape, Batteries, Base AC Adapter) .....	page 2
<b>Getting Ready</b>	
Barbie™ Wireless Video Camera Battery Installation .....	page 3
Barbie™ Wireless Video Camera Hand Strap Adjustment .....	page 3
A/B Channel Selector Switch Setting .....	page 3
Connecting the AC Adaptor.....	page 3
<b>Set Up Methods.....</b>	<b>page 4</b>
<b>Transmitting To Your TV</b>	
Connecting To A TV With Audio/Video Input .....	page 5
Find Your Broadcasted Image On Your TV .....	page 5
<b>Transmitting and Recording To Your VCR or TV/VCR Combo</b>	
Connecting To A VCR Or TV/VCR With Audio/Video Input .....	page 6
Find Your Broadcasted Image On Your TV .....	page 6
<b>Using Your Barbie™ Wireless Video Camera And Filming Tips</b>	
Tripod.....	page 7
Helpful Tips .....	page 7
<b>Troubleshooting.....</b>	<b>page 8</b>
<b>Notes .....</b>	<b>page 9-10</b>

## FCC Warning

This device complies with Part 15 of the FCC Rules. operation is subject to the following two conditions: (1) This device may not cause harmful interference, and (2) this device must accept any interference received, including interference that may cause undesired operation. NOTE: This equipment has been tested and found to comply with the limits for a Class B digital device, pursuant to Part 15 of the FCC Rules.

These limits are designed to provide reasonable protection against harmful interference in a residential installation. This equipment generates, uses and can radiate radio frequency energy and, if not installed and used in accordance with the instructions, may cause harmful interference to radio communications. However, there is no guarantee that interference will not occur in a particular installation. If this equipment does cause harmful interference to radio or television reception, which can be determined by turning the equipment off an on, the user is encouraged to try to correct the interference by one or more of the following measure:

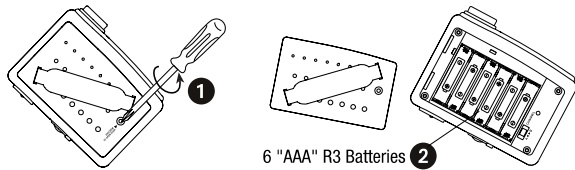
- Reorient or relocate the receiving antenna.
- Increase the separation between the equipment and receiver.
- Connect the equipment into an outlet on a circuit different from that to which the receiver is connected.
- Consult the dealer or an experienced radio/TV technician for help.

**Caution:** Changes or modifications not expressly approved by the party responsible for the compliance could void the user's authority to operate the equipment.

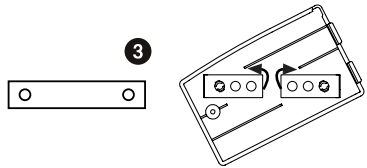
## Notes

## Getting Ready

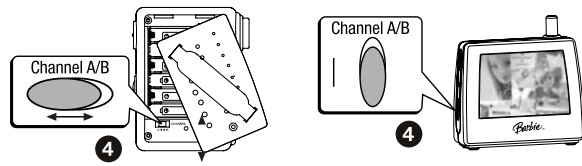
### Barbie™ Wireless Video Camera Battery Installation



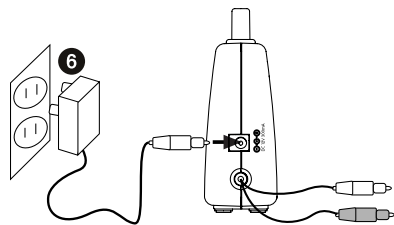
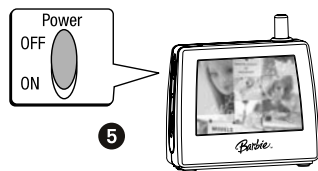
### Barbie™ Wireless Video Camera Hand Strap Adjustment



### A/B Channel Selector Switch Setting



### Connecting the AC Adaptor



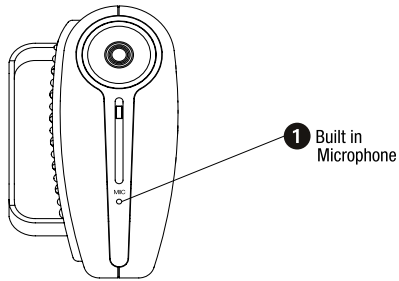
## Troubleshooting

### Troubleshooting Barbie™ Wireless Video Camera

Problem	Cause	Remedy
I can not find the transmitted picture	Check your TV input mode	Your TV input (or source) mode should be set to the same mode as when you use your VCR. This is usually the Video mode (it may be Video, Video 1, Video 2, or Input)
	Check your VCR Mode	Your VCR should be set to the VCR mode, not the TV mode. This button can usually be found on the VCR or the VCR remote.  Make sure your TV is set up to receive the signal from the video Input mode that you have selected. If your camera is hooked up to Video 2, your TV has to be set up to receive the signal from Video 2. Check your TV manual for further instructions.
I cannot find picture on my TV when using the VCR input jacks on the FRONT of my VCR	Your VCR may be set up to receive from the REAR Video Input	Make sure your VCR is setup to receive the signal from the FRONT Video Input. Check your VCR manual to select the FRONT Video Input jacks.
I cannot find the picture on my TV when using the VCR input jacks on the REAR of my VCR.	Your VCR may be set up to receive from the FRONT Video Input	Make sure your VCR is setup to receive the signal from the REAR Video Input. Check your VCR manual to select the REAR Video Input jacks.
Picture has interference	Channel Selector switch	Change the position of the "A/B" Channel Selector Switch on your Barbie™ Wireless Video Camera and Barbie™ Camera Base (inside battery compartment). Make sure that the Barbie™ Wireless Video Camera and Barbie™ Camera Base A/B Channel Selector switch are set to the same position (A or B).
Poor picture quality	Weak batteries	Install new alkaline batteries.
If your TV display is in black and white (not color pictures)	Weak batteries	Install new alkaline batteries.
If your TV display has vertical lines	Weak batteries	Install new alkaline batteries.
TV speakers have feedback	Your TV volume may be too high	Press mute or lower the volume on your TV

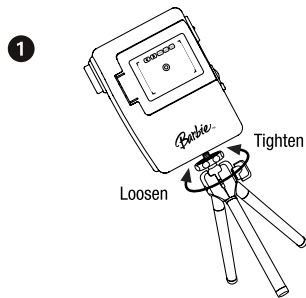
## Using Your Barbie™ Wireless video Camera And Filming Tips

### Microphone



Your Barbie™ Wireless Video Camera has a built in microphone. Use the Built in Microphone to record sound.

### Tripod



You can star in your own productions using the tripod.

- 1 Push down on the protective pink cap covering the screw on your tripod to expose the screw.
- 2 Screw the Tripod into the base of the Barbie™ Wireless Video Camera.
- 3 Extend the tripod legs while on a firm flat surface.
- 4 Check the image in your TV display before recording.

### Helpful Tips

- The Barbie™ Wireless Video Camera must be handled with care at all times. Do not drop the Barbie™ Wireless Video Camera, strike the Barbie™ Wireless Video Camera against a hard surface, or handle the Barbie™ Wireless Video Camera or any of its accessories roughly in any way. Failure to follow these instructions and all other care-related instructions in this manual may invalidate your warranty.
- Hold the Barbie™ Wireless Video Camera steady for best results. Pan slowly while moving the Barbie™ Wireless Video Camera.
- The Barbie™ Wireless Video Camera will broadcast through solid objects such as walls and doors. Some materials may degrade the signal resulting in reduced range and picture and sound quality. Direct line of sight from the Barbie™ Wireless Video Camera to the Barbie™ Camera Base will result in optimal performance.
- Fluorescent lamps, cellular phones, microwave ovens, power transformers and other electrical items may affect the broadcast signal of the Barbie™ Wireless Video Camera. For the best results try and position the Barbie™ Wireless Video Camera away from such items.
- Low battery power for the Barbie™ Wireless Video Camera may result in poor camera signal; and picture quality. Always try and use fresh alkaline batteries.
- Do not use the Barbie™ Wireless Video Camera in conditions such as extreme cold, extreme heat, wind or rain
- Do not point the Barbie™ Wireless Video Camera directly at the sun.
- Do not point Barbie™ Wireless Video Camera directly or too close to the TV.
- To avoid feedback, never place microphone too close to the speaker.

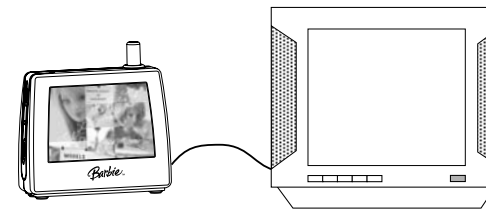
## Set Up Methods

**Important:** There are two ways to use your Barbie™ Wireless Video Camera.

Please choose One Of The Following Two Connection Methods:

Adult needed to connect camera base to TV or VCR.

### 1 Connecting To A TV

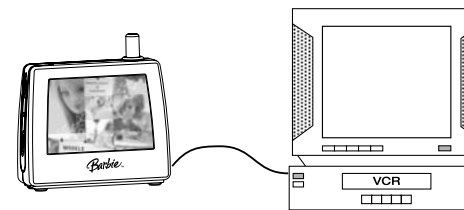


Barbie™ Camera Base connects directly to your TV. This connection allows you to **transmit live audio and video directly to your TV.**

Go to Page 5

**OR**

### 2 Connecting To A VCR Or TV/VCR Combo

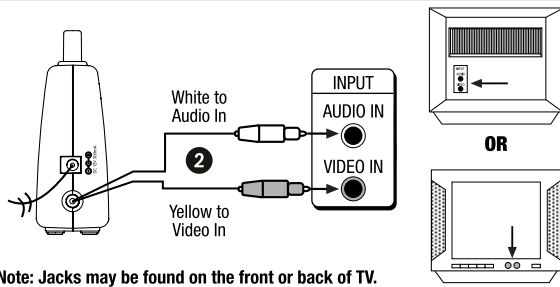
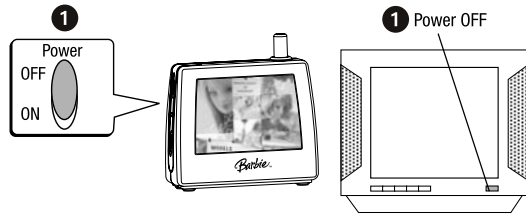


Barbie™ Camera Base connects directly to your VCR or TV/VCR Combo. This connection allows you to **RECORD live audio and video to your VCR while it's transmitted to your TV.**

Go to Page 6

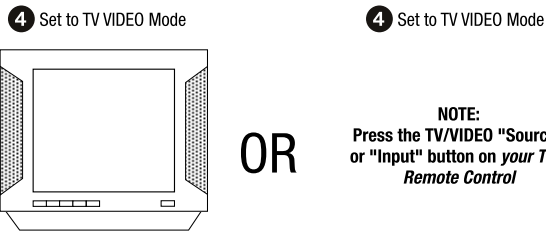
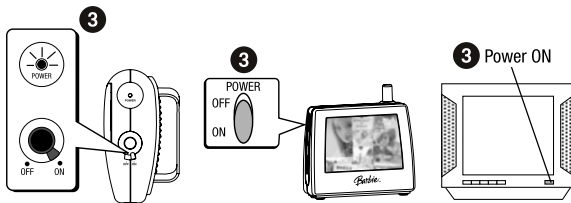
## Transmitting To Your TV

### Connecting To A TV With Audio/Video Input



Note: Jacks may be found on the front or back of TV.

### Find Your Broadcasted Image On Your TV



NOTE: Press the TV/VIDEO "Source" or "Input" button on your TV's Remote Control

- 1 Turn off power to both your TV and the Barbie™ Camera Base.

NOTE: Make sure the channel switch on the Barbie™ Wireless Video Camera and Barbie™ Camera Base are in the same position (A or B). See Page 3

- 2 Connect your Barbie™ Camera Base to the TV using the attached AV cable. Match the color-coded cords to the appropriate jacks on the TV. The Yellow Video cable should plug into the VIDEO IN jack on the TV. The White Audio cable should plug into the AUDIO IN white or red jack on the TV.

NOTE: Jacks may be found on the front and/or back of TV.

- 3 Turn on your Barbie™ Wireless Video Camera, Barbie™ Camera Base and TV. Press mute or lower the volume on your TV to eliminate feedback from your TV speakers.

- 4 Press the TV/VIDEO "SOURCE" or "INPUT" button on your TV or its remote control until you find the image from your Barbie™ Wireless Video Camera.

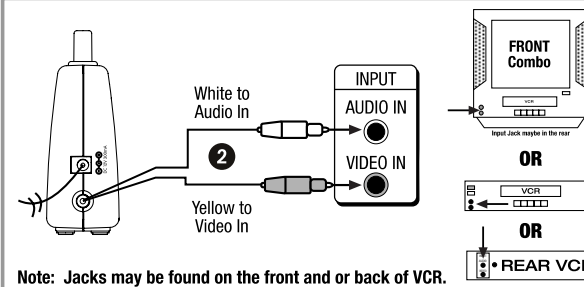
NOTE: Sometimes this mode must be selected via the TV's menu system. Refer to your TV's owners manual.

NOTE: If you can not find the picture or the picture has interference go to Troubleshooting on Page 8.

See Page 7 for Filming Tips

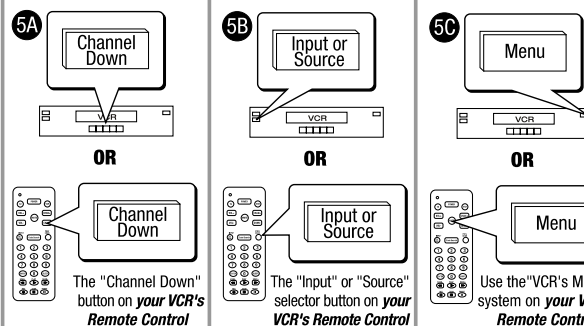
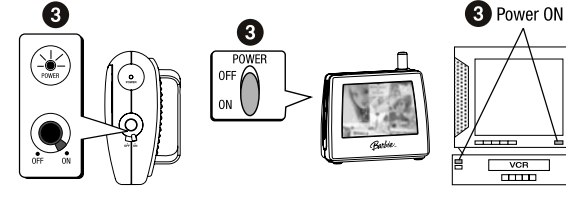
## Transmitting And Recording To Your VCR Or TV/VCR Combo

### Connecting To A VCR OR TV/VCR With Audio/Video Input



Note: Jacks may be found on the front and or back of VCR.

### Find Your Broadcasted Image On Your TV



- 1 Turn off power to your TV, VCR and the Barbie™ Camera Base.

NOTE: Make sure the channel switch on the Barbie™ Wireless Video Camera and Barbie™ Camera Base are in the same position (A or B). See Page 3

- 2 Connect the Barbie™ Camera Base to your VCR or Combo using the attached AV cable. Match the color-coded cords to the appropriate jacks on the VCR. The Yellow Video cable should plug into the VIDEO IN jack on the VCR. The White Audio cable should plug into the AUDIO IN white or red jack on the VCR.

NOTE: Input jacks may be found on the front and/or rear (or both locations) of your VCR or Combo.

- 3 Turn on your Barbie™ Wireless Video Camera, Barbie™ Camera Base and VCR or TV/VCR Combo. Press mute or lower the volume on your TV to eliminate feedback from your TV speakers.

- 4 Make sure your VCR's mode selector (TV/VCR) switch is set to the "VCR" or "VIDEO" mode. You will not be able to view your Barbie™ Wireless Video Camera signal if this mode is set to TV.

- 5 To find the picture transmitted from your Barbie™ Wireless Video Camera we suggest one of the following methods that will work on almost all late model VCR's or Combos.

- A. Press the "CHANNEL DOWN" button on either your VCR or the VCR remote control and scan below Channel 2. If you don't find the Barbie™ Wireless Video Camera image after scanning down several channels below Channel 2, go to Step B.

- B. Find the "INPUT" or "SOURCE" selector button on either your VCR's Remote or front panel and press until the Barbie™ Wireless Video Camera image appears. If you can not locate the image try Step C.

- C. Using the VCR's Menu System on either VCR's Remote or front panel locate the "INPUT" or "SOURCE" of the Barbie™ Wireless Video Camera's signal. If you have trouble locating the image refer to your VCR owners manual. You may need to use your VCR menu system to select either the front or rear video input jack.

NOTE: If you still can not find the image go to Troubleshooting on Page 8.

- 6 Once you have located the image on your TV, you're ready to record. Place your tape in the VCR and press record on your VCR. NOTE: Make sure the record tab is in place on the blank tape.

See Page 7 for Filming Tips