

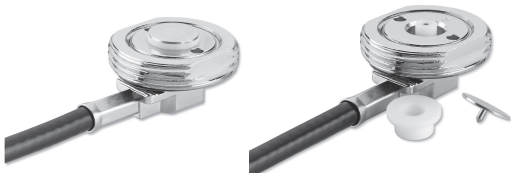
LARSEN BROADBAND MOBILE ANTENNAS

WLAN deployment is growing rapidly and so is the need for advanced technologies and high frequency antennas. In response to industry demands, Larsen has developed a unique line of high frequency mobile antennas. These products are designed to cover 802.11a, b and g bands. They are also designed to deliver superior electrical performance through efficient signal coverage.

Larsen WLAN mobile antennas include a variety of mounting styles:

- EF:** NMO mount elevated feed. Feed point is raised above obstacles such as light bars on emergency vehicles.
- LPT:** Transit style radome enclosed antenna, NMO mounted.
- MS:** Compact magnetic mount antennas.
- NMOHF*:** Premium high frequency Motorola-style, 3/4" hole mount. Also available in a thick mount version.
- SB:** Stealth blade flexible printed circuit antenna.

*** Note: All NMO mount antennas listed require an NMOHF (NMO High Frequency) mount.**



NMOHF Mount

Convert from low frequency applications to high frequency applications and back by pulling or replacing the center pin and insulator.



NMOHF Thick Mount

The NMOHFTHK is designed for surfaces up to 1/2" thick. Convert from low to high frequency applications by pulling or replacing the center pin and insulator



NMOHF Magnetic Mount

The NMOMMR is designed with 90 lbs of pull strength. Convert from low to high frequency applications and back by pulling or replacing the center pin and insulator.

LARSEN BROADBAND MOBILE ANTENNAS

MODEL	FREQUENCY (MHz)
LPT2400NMOHF (W)	2400 - 2500
Note: This antenna requires an NMOHF-style mount.	
SPECIFICATIONS	
GAIN	1 dBi without ground plane
TYPE	Low Profile Transit
VSWR	2:1
POWER RATING	10 Watts
COLOR	Black or White
COAX	Order Separately
BASE DIAMETER	1.75"
MAX HEIGHT	3.5"



MODEL	FREQUENCY (MHz)
NMO4E4900B	4900 - 5350
Note: This antenna requires an NMOHF-style mount.	
SPECIFICATIONS	
GAIN	4 dBi
TYPE	Elevated Feed
VSWR	2:1
POWER RATING	10 Watts
COLOR	Black
COAX	Order Separately
BASE DIAMETER	1.6"
MAX HEIGHT	4.5"



MODEL	FREQUENCY (MHz)
LPT825/19NMOHF	806-960 / 1710-1990 / 2400
Note: This antenna requires an NMOHF-style mount.	
SPECIFICATIONS	
GAIN	3 dBi / 4 dBi / 2 dBi
TYPE	Low Profile Transit
VSWR	2:1
POWER RATING	10 Watts
COLOR	Black or White
COAX	Order Separately
BASE DIAMETER	1.75"
MAX HEIGHT	3.5"

MODEL	FREQUENCY (MHz)
NMO4E5350B	5350 - 5925
Note: This antenna requires an NMOHF-style mount.	
SPECIFICATIONS	
GAIN	4 dBi
TYPE	Elevated Feed
VSWR	2:1
POWER RATING	10 Watts
COLOR	Black
COAX	Order Separately
BASE DIAMETER	1.6"
MAX HEIGHT	4.5"



MODEL	FREQUENCY (MHz)
NMO5E2400B	2400 - 2500
Note: This antenna requires an NMOHF-style mount.	
SPECIFICATIONS	
GAIN	5 dBi
TYPE	Enclosed Coil
NOMINAL IMPEDANCE	50 Ohms
VSWR	1.5:1
POWER RATING	100 Watts
COLOR	Black
COAX	Order Separately
BASE DIAMETER	1.75"
MAX HEIGHT	8.75"



MODEL	FREQUENCY (MHz)	HEIGHT
EF2405NMO	2400 - 2500	13"
EF4905NMO	4900 - 5000	10"
SPECIFICATIONS		
GAIN	5 dBi with ground plane	
TYPE	Elevated Feed	
NOMINAL IMPEDANCE	50 Ohms	
VSWR	2:1	
POLARIZATION	Vertical	
COLOR	Black	
COAX	Order Separately	
HEIGHT	7.6" L x 3.4" W x 1.3" D	
CONNECTOR	Order separately	
MOUNTING	NMOHF Mount	

MODEL	FREQUENCY (MHz)	CONN	COAX
SB24003	2400 - 2500	No Conn	3'
SB24006	2400 - 2500	No Conn	6'
SB2400SMA3	2400 - 2500	SMA	3'
SB2400SMA6	2400 - 2500	SMA	6'
SB2400SMB3	2400 - 2500	SMB	3'
SB2400SMB6	2400 - 2500	SMB	6'
SB2400MMCX3	2400 - 2500	MMCX	3'
SB2400MMCX6	2400 - 2500	MMCX	6'

SPECIFICATIONS	
GAIN	0 dBi
TYPE	Dipole
VSWR	2:1
POWER RATING	3 Watts
COLOR	Black
COAX	RG-174
DIMENSIONS	3" L x 0.75 D"
POLARIZATION	Linear

