



Powering Business Worldwide™

TD110 RCU

Installation / Configuration Manual

TD110 RCU

May 20, 2020
DMAN-xxxx-01

EATON
DBA Cooper Industries (Electrical) Inc
74-1833 Coast Meridian Road, Port Coquitlam, BC, Canada • V3C 6G5
Tel: (604) 944-9247 • Fax: (604) 944-9267

END-USER LICENSE AGREEMENT

Last Revised Date: Oct 7, 2019

Eaton DBA Cooper Industries (Electrical) Inc ("EATON") owns and develops the R270 product internal software ("Product Software"). The following End-User License Agreement ("Agreement") governs the use of this Product Software. Other sites, content or online services owned or controlled by Eaton have their own terms of use/end-user license agreement and should be reviewed. Eaton licenses the use of the Product Software to you subject to the terms of this Agreement. [The following Privacy Policy also applies to your use of the Product Software:

IMPORTANT, PLEASE READ THIS AGREEMENT BEFORE REGISTERING, ACCESSING OR USING THE PRODUCT SOFTWARE. THIS AGREEMENT IS A BINDING LEGAL CONTRACT BETWEEN YOU (IF REGISTERING AS AN INDIVIDUAL) AND/OR THE ENTITY YOU REPRESENT (IF REGISTERING AS A BUSINESS) ("YOU" OR "YOUR") AND EATON, TOGETHER WITH ITS AFFILIATES, ENTITIES, AND SUBSIDIARIES. BY THE PRODUCT SOFTWARE, YOU ARE AGREEING TO BE BOUND BY THIS AGREEMENT. YOUR RIGHT TO USE THE PRODUCT SOFTWARE IS LIMITED BY APPLICABLE LAWS IN ITS JURISDICTION.

[IF YOU DO NOT ACCEPT THE TERMS IN THIS AGREEMENT, DO NOT REGISTER, ACCESS OR USE THE PRODUCT SOFTWARE IN ANY WAY.](#)

License. Subject to the terms and conditions of this Agreement, Eaton grants to you a limited, non-transferable, non-sublicensable, non-assignable, non-exclusive and revocable license to access and use the Product Software in conjunction with the operation of Eaton products to which the Product Software pertains or other products as described by Eaton in any user guides and manuals for access to and use of the Product Software ("Documentation") solely for your own use and only in a manner that is consistent with the terms of this Agreement ("License"). In the event Eaton requires you to register as an end-user, this license is valid only if the registration is complete and accurate.

Restrictions. You are not allowed to copy, decompile, reverse engineer, disassemble, attempt to derive the source code of, modify, or create derivative works of the Product Software, or any updates or upgrades, or any part thereof. You may not use any part of the Product Software to create any independent data files, databases, compendiums or any other reference materials. If you breach these restrictions, you may be subject to prosecution and damages. The Product Software is intended for adults, and by accessing the Product Software, you represent that you are a legal adult.

Prohibited Conduct. In connection with your access to and/or use of the Product Software, you agree not to:

- Violate any laws or regulations.
- Make attempts to defeat or circumvent security features, or to use the Product Software for any purpose other than its intended purposes.
- Engage in any behavior that is designed to gain unauthorized access to protected areas of the Product Software and/or Eaton's computers, servers or networks, and/or any computers or systems used by other users of the Product Software.
- Make unauthorized attempts to modify any information stored in the Product Software.
- Use any automated technology such as a robot, spider, or scraper to access, scrape, or data mine the Product Software.
- Provide false or misleading information when signing up for a Product Software account or otherwise upload/post any false or misleading information or content through the Product Software.
- Upload/post anything that could destroy, damage, or impair any portion of the Product Software or any computers, systems, hardware, or software used by Eaton or other users.
- Upload/post anything that imposes an unreasonable strain on Eaton's network or computer infrastructure.
- Upload/post any unsolicited or unauthorized advertising, promotional materials, spam emails, chain letters, pyramid schemes, or any other form of such solicitations.

The previous list of prohibitions is not exclusive or exhaustive.

Updates. Eaton may update or upgrade the Product Software at any time. Functions of the Product Software may be modified or discontinued as a result of any such updates or upgrades. If effects to maintenance support of any kind, Eaton may terminate that maintenance support at any time without notice to you. The terms and conditions of this Agreement shall govern any upgrades or updates provided by Eaton that replace and/or supplement the original Product Software, unless such upgrade is accompanied by, or references, a separate license agreement in which case the terms of that license agreement shall govern.

Events Outside of Eaton's Control. Eaton will not be liable or responsible for any failure to perform, or delay in performance of, any of Eaton's obligations under this Agreement that is caused by any act or event beyond Eaton's reasonable control, including but not limited to, acts of God, failure of public or private telecommunications networks, changes in law or regulation, or any other force majeure event or circumstance, whether or not foreseeable.

Proprietary Rights. Eaton owns all rights, title and interest in, and to, without limitation, all intellectual and proprietary rights of any and all featured products or parts, including, but not limited to, any models, data, or formulas exhibited in the Product Software excluding any Open Source Software as defined below that may be contained herein. Except for the limited license granted to you herein, nothing in this Agreement shall be construed to restrict, transfer, convey, encumber, alter, impair or otherwise adversely affect Eaton's ownership or proprietary rights therein or any other of Eaton's information, processes, methodologies, products, goods, services, materials, tangible or intangible, in any form and in any medium.

Open Source. Certain items of software included with the Product Software may be subject to "open source" or "free software" licenses ("Open Source Software"). Some of the Open Source Software is owned by third parties. The Open Source Software is not subject to the terms and conditions of this License. Instead, each item of Open Source Software is licensed under the terms and conditions accompanying such Open Source Software. Nothing in this Agreement limits your rights under or grants you rights that supersede the terms and conditions of any applicable end user license for the Open Source Software. To the extent there are any conflicts between the terms of this Agreement and any Open Source Software license corresponding to the open source component(s) of the software included with the Product Software or additional obligations by such Open Source Software license that are not set forth in this Agreement, the terms of the Open Source Software license will control. Eaton provides the Open Source Software to you "AS IS" without any indemnities or warranties of any kind.

Fees. Eaton may charge you fees for access to the Product Software. You agree to pay all fees and charges, including applicable taxes, incurred through your account at the rates in effect for the billing period in which such fees and charges are incurred, including but not limited to, charges for any products or services offered for sale through the Product Software by Eaton (such fees, charges and taxes shall collectively be referred to as "Fees"). Eaton reserves the right to change the amount of, or basis for determining, any Fees, and to institute new Fees, effective upon prior notice to you.

Support Services. Eaton or its suppliers and distributors may provide you with support services related to the Product Software ("Support Services"). Use of Support Services is governed by the policies and programs described in the Documentation, and/or other Eaton-provided materials. Any supplemental materials provided to you as part of the Support Services shall be considered part of the Product Software, as applicable, and subject to the terms and conditions of this Agreement.

No Warranty. TO THE EXTENT PERMITTED BY LAW, YOU EXPRESSLY ACKNOWLEDGE AND AGREE THAT USE OF THE PRODUCT SOFTWARE IS AT YOUR SOLE RISK AND THAT THE ENTIRE RISK AS TO SATISFACTORY QUALITY, PERFORMANCE, ACCURACY AND EFFORT OF THE PRODUCT SOFTWARE IS WITH YOU. TO THE MAXIMUM EXTENT PERMITTED BY APPLICABLE LAW, THE PRODUCT SOFTWARE AND ANY SERVICES PERFORMED OR PROVIDED BY OR IN CONNECTION WITH THE PRODUCT SOFTWARE ARE PROVIDED ON AN "AS IS" AND "AS AVAILABLE" BASIS, WITH ALL BUGS AND FAULTS AND WITHOUT WARRANTY OF ANY KIND. EATON, ITS AFFILIATES, SUBSIDIARIES, AND AUTHORIZED REPRESENTATIVES HEREBY DISCLAIM ALL WARRANTIES AND CONDITIONS OF ANY KIND WITH RESPECT TO THE PRODUCT SOFTWARE AND ANY SERVICES, EITHER EXPRESS, IMPLIED, STATUTORY, OR OTHERWISE, INCLUDING, BUT WITHOUT LIMITATION, ANY IMPLIED WARRANTIES AND/OR CONDITIONS OF MERCHANTABILITY, OF SATISFACTORY QUALITY, OF FITNESS FOR A PARTICULAR PURPOSE, SECURITY, COMPLETENESS, TIMELINESS, ACCURACY, QUIET ENJOYMENT, TITLE, FREEDOM FROM COMPUTER VIRUSES, AND OF NON-INFRINGEMENT OF THIRD PARTY RIGHTS. NEITHER EATON, NOR ANY OF ITS AFFILIATES OR SUBSIDIARIES, WARRANT THAT THE FUNCTIONS OR SERVICES CONTAINED IN, ACCESSED FROM, PERFORMED BY, DISPLAYED ON, LINKED TO/FROM, OR PROVIDED BY, THE PRODUCT SOFTWARE WILL MEET YOUR REQUIREMENTS, THAT THE OPERATION OF THE PRODUCT SOFTWARE OR SERVICES WILL BE UNINTERRUPTED, ERROR-FREE, TIMELY, SECURE, OR THAT DEFECTS OR ERRORS IN THE PRODUCT SOFTWARE OR SERVICES WILL BE CORRECTED, OR THAT THE PRODUCT SOFTWARE WILL BE COMPATIBLE WITH ANY SYSTEM, OR THAT THE PRODUCT SOFTWARE WILL BE FREE FROM WORMS, VIRUSES, MALWARE, TROJAN HORSES, OR OTHER HARMFUL OR DISABLING COMPONENTS. NO ORAL OR WRITTEN INFORMATION OR ADVICE GIVEN BY EATON, ITS AFFILIATES, SUBSIDIARIES, OR ANY OF THEIR RESPECTIVE AUTHORIZED REPRESENTATIVES SHALL CREATE A WARRANTY. YOU ASSUME THE ENTIRE COST OF ANY AND ALL NECESSARY REPAIRS IN THE EVENT YOU EXPERIENCE ANY LOSS OR DAMAGE ARISING FROM THE USE OF THE PRODUCT SOFTWARE OR ANY RELATED GOODS OR SERVICES. IF YOU ARE DISSATISFIED WITH THIS AGREEMENT, THE PRODUCT SOFTWARE AND/OR ANY RELATED GOODS OR SERVICES, YOUR SOLE AND EXCLUSIVE REMEDY IS TO DISCONTINUE USING THE PRODUCT SOFTWARE. SOME JURISDICTIONS DO NOT ALLOW THE EXCLUSION OF IMPLIED WARRANTIES OR LIMITATIONS ON APPLICABLE STATUTORY RIGHTS OF A CONSUMER, SO THE ABOVE EXCLUSION AND LIMITATIONS MAY NOT APPLY TO YOU.

Limitation of Liability. TO THE EXTENT PERMITTED BY LAW, IN NO EVENT WILL EATON OR ITS OFFICERS, DIRECTORS, EMPLOYEES, AFFILIATES, SUBSIDIARIES AGENTS, LICENSORS, REPRESENTATIVES, ATTORNEYS AND/OR BUSINESS PARTNERS, NOR ANY PARTY INVOLVED IN THE CREATION, PRODUCTION, OR TRANSMISSION OF THE PRODUCT SOFTWARE, BE LIABLE FOR ANY LOSS OR DAMAGE OF ANY KIND WHATSOEVER, INCLUDING, BUT NOT LIMITED TO, ANY DIRECT, INDIRECT, INCIDENTAL, SPECIAL, STATUTORY, PUNITIVE, ACTUAL, LIQUIDATED, EXEMPLARY, CONSEQUENTIAL OR OTHER DAMAGES, INCLUDING, WITHOUT LIMITATION, DAMAGES FOR LOSS OF PROFITS, LOSS OF REVENUE, LOSS OF DATA, LOSS OF PRODUCTION, LOSS OF GOODWILL, INTELLECTUAL PROPERTY INFRINGEMENT, BUSINESS INTERRUPTION OR LOSS OF USE, PAIN AND SUFFERING, EMOTIONAL DISTRESS OR SIMILAR DAMAGES, OR ANY OTHER COMMERCIAL DAMAGES OR LOSSES, ARISING OUT OF OR RELATED TO YOUR USE OR INABILITY TO USE THE PRODUCT SOFTWARE, HOWEVER CAUSED, REGARDLESS OF THE THEORY OF LIABILITY (CONTRACT, TORT OR OTHERWISE) AND EVEN IF EATON OR THE AFOREMENTIONED PARTIES HAVE BEEN ADVISED OF THE POSSIBILITY OF SUCH DAMAGES.

TO THE EXTENT PERMITTED BY LAW, IN NO EVENT WILL THE COLLECTIVE LIABILITY OF EATON OR THE AFOREMENTIONED PARTIES, REGARDLESS OF THE TYPE OF ACTION, WHETHER IN CONTRACT, TORT, OR OTHERWISE, EXCEED THE GREATER OF \$100,000 OR THE AMOUNT THE AUTHORIZED PARTY PAID TO EATON AND/OR THE AFOREMENTIONED PARTIES FOR THE APPLICABLE GOODS OR SERVICES OUT OF WHICH THE LIABILITY AROSE.

Indemnification. You agree to indemnify, defend, and hold harmless Eaton, including its officers, directors, employees, affiliates, subsidiaries, agents, licensors, representatives, attorneys, business partners, and respective successors and assigns ("Indemnified Parties") from and against any and all claims, demands, actions, liabilities, judgments, awards, losses, damages, costs and expenses (including reasonable attorneys' fees, costs of defense, and direct, indirect, punitive, special, individual, consequential, or exemplary damages), Eaton or any of the Indemnified Parties suffer in relation to, arising from, or from the purpose of avoiding, any claim or demand from a third party that relates to your: (a) breach or violation of this Agreement; (b) infringement, misappropriation or any violation of the rights of any other party from use of the Product Software in violation of this Agreement; (c) violation or non-compliance with any applicable law, rule, guidelines, acts, decrees, orders or regulations; (d) use, alteration or export of the Product Software (or any component thereof) in violation of this Agreement; and (e) the use of the Product Software by you or any person using your account. Eaton and its affiliates reserve the right to assume the exclusive defense and control of any claims or actions subject to indemnification by you and all negotiations for its settlement or compromise, and you agree to fully cooperate with Eaton and its affiliates upon request by Eaton.

By accepting this Agreement, you waive and hold harmless Eaton from any claims resulting from any action taken by Eaton during or as a result of Eaton's investigation and/or from any actions taken as a consequence of investigations by either Eaton or law enforcement related to your use of the Product Software.

Amendments to this Agreement. Eaton may modify, add or remove any of the terms and conditions of this Agreement at its sole discretion at any time without prior notice. Your continued use of the Product Software after such modifications are made to the Agreement will mean that you accept and agree to be bound by and comply with such changes and updates.

For Authorized Parties in California. In compliance with California Civil Code § 1789.3, an Authorized Party residing in California has the right to contact Eaton with any complaints or to seek additional information. Such Authorized Party may email Eaton at dataprotection@eaton.com or write to: Attn: Global Data Protection and Privacy Office, Eaton, 1000 Eaton Blvd., Cleveland, OH 44122.

If Authorized Parties in California have any questions or complaints about Eaton they may also contact: The Complaint Assistance Unit of the Division of Consumer Services of the California Department of Consumer Affairs through writing at 400 R Street, Suite 1080, Sacramento, CA 95814, or by telephone at (916) 445-1254 or (800) 952-5210. Hearing impaired persons may call (916) 928-1227 or (800) 326-2297 via TTY device.

Confidential Information. All information provided in Product Software is Eaton's confidential information. You agree that you will not use or disclose Eaton's confidential information without the prior written consent of Eaton, except to share it with your employees who have a need to know the information and are bound by a duty of confidentiality covering the information that is at least as restrictive as the obligations in this Agreement.

Except for personally identifiable information, the use and disclosure of which is addressed in the Privacy Policy for the Product Software, any and all information and content provided by you to Eaton is provided on a non-proprietary and non-confidential basis, regardless of whether the information or content is marked or otherwise identified as confidential or proprietary. You agree that Eaton has a royalty-free, perpetual, irrevocable, worldwide, non-exclusive right and license to use, reproduce, modify, adapt, publish, translate, create derivative works from, distribute, perform, and display any provided information or content for the purpose of operating and/or marketing the Services or any related services rendered by Eaton. This license includes any right of publicity rights that may be present in the provided information or content.

Intellectual Property. Other than the exceptions referenced in this Agreement and noted elsewhere, all content provided through the Product Software is the sole and exclusive property of Eaton including, but not limited to, all trade names, service marks, trademarks, logos, text, data, documents, messages, pictures, images, video, audio, graphics, links, software and its underlying code, domain names, or other electronic files (referred to hereafter as "Eaton Content").

Certain elements of the Product Software including, but not limited to, text, graphics, photos, images, video, audio, color selections, organization and layout, are copyright protected under United States and international copyright laws. Any Eaton Content protected by intellectual property laws may not be copied, republished, posted, modified, edited, transmitted, distributed, used to create derivative works of, or reverse engineered without Eaton's written permission. No information, data, documents, or records found through the Product Software shall be made available as part of a website, app or online location, whether by hyperlink, framing on the internet or otherwise, without the express written consent of Eaton.

You acknowledge that you have no right, title or interest in or to the Product Software and/or any Eaton Content. EATON and Trusted Wireless are trade names and/or marks owned exclusively by Eaton. You shall not use any trade names or marks that are confusingly similar in Eaton's sole opinion without the prior written consent of Eaton, which may be withheld in its sole discretion. Nothing in this Agreement and nothing found through the Product Software shall be construed as a license to use any of Eaton's trademarks, patents, copyrights, or other intellectual property rights.

There may be other content located in the Product Software that is not owned by Eaton, and you should respect those property rights as well. All rights not expressly granted herein are reserved to Eaton.

Termination or Suspension. This Agreement is effective for an unlimited duration unless and until terminated as set forth herein. Eaton reserves the right to terminate your access to the Product Software for any violation of this Agreement, and in those circumstances, all rights under the license granted shall terminate automatically without notice from Eaton. If Eaton suspends or terminates your account under this Agreement, you acknowledge that all information and content associated with such account will no longer be available to you. Upon termination of this Agreement, you shall cease all use of the Product Software, and destroy all copies, full or partial, thereof. Any provision of this Agreement which by its nature must survive the termination of this Agreement in order to give effect to its meaning shall survive such termination.

Miscellaneous. If any provision hereof becomes or is declared by a court of competent jurisdiction to be illegal, unenforceable, or void, this Agreement will continue in full force and effect without said provision. The section titles in this Agreement are for convenience only and have no legal or contractual effect. No failure or delay by Eaton or its affiliates to exercise any right or enforce any obligation shall impair or be construed as a waiver or ongoing waiver of that or any other right or power. Waiving one breach will not be construed to waive any succeeding breach. All waivers must be in writing and signed by the party waiving rights. No provisions in purchase orders, or in any other business forms employed by you, will supersede the terms and conditions of this Agreement.

Export Rules and U.S. Government Restricted Rights. You agree not to provide access to or use of the Product Software to any citizen of a country to which access or use thereof is barred, or to which exports or shipments are barred, or to anyone on the U.S. Treasury Department's list of Specially Designated National or the U.S. Department of Commerce Denied Person's List or Entity List or any other restricted parties lists by the United States government. Further, you will not ship, transfer or export the Product Software into any country or use the Product Software in any manner prohibited by the United States Export Administration Act or any other export laws, restrictions or regulations (collectively the "Export Laws"). In addition, if the Product Software is identified as export controlled items under the Export Laws, you represent and warrant that you are not a citizen of, or otherwise located within, an embargoed nation and that you are not otherwise prohibited under the Export Laws from receiving access to or using the Product Software. All rights to access and use of the Product Software are granted on condition that such rights are forfeited if you fail to comply with the terms of this Agreement.

If the Software is licensed to agencies of the U.S. Government, the Software is a "commercial item" as that term is defined at 48 C.F.R. § 2.101, consisting of "commercial computer software" and "commercial computer software documentation", as such terms are used in 48 C.F.R. § 12.212, and is provided to the U.S. Government only as a commercial end item. Consistent with 48 C.F.R. § 12.212 and 48 C.F.R. §§ 227.7202-1 through 227.7202-4, all U.S. Government End Users acquire the Software with only those rights set forth herein. Contractor/manufacturer is Eaton Corporation, 1000 Eaton Boulevard, Cleveland, Ohio 44122.

Compliance with License and Laws. You shall comply with all federal, state, local and foreign laws, regulations, rules and ordinances pertaining to the license granted to you under this Agreement. If any part of this Agreement is determined to violate any applicable federal, state, local or foreign laws, rules or regulations, then the remaining provisions of this Agreement shall remain in full force and effect and shall be enforced to fullest extent permitted by law.

Governing Law and Interpretation. To the extent not prohibited by law, you agree that this Agreement and all disputes, claims, actions, suits or other proceedings arising hereunder shall be governed by, and construed in accordance with, the substantive law of the State of Ohio applicable to contracts wholly made and to be performed within the State of Ohio, and to irrevocably submit to the sole and exclusive jurisdiction of the courts of Ohio or the Federal courts of the Northern District of Ohio, and to irrevocably consent to the exercise of personal jurisdiction by such courts and waive any right to plead, claim or allege that Ohio is an inconvenient forum.

Agreement. This Agreement constitutes the entire agreement between you and Eaton regarding the use of the Product Software and supersedes any prior or contemporaneous understandings and agreements between you and Eaton related to its subject matter.

If you have any questions regarding this Agreement, you may contact Eaton at:

Eaton
Attn: Law Department
1000 Eaton Boulevard
Mail Code 4N
Cleveland, OH 44122
Email: cyberlawteam@eaton.com

Eaton
Attn: Global Data Protection and Privacy Office
1000 Eaton Boulevard
Cleveland, OH 44122
Email: dataprotection@eaton.com

Table of Contents

Safety Precautions	5
Product Security.....	7
System Overview	8
Features.....	8
TD110 Dimensions and Controls	8
Power the RCU.....	9
Test the RCU / Base station Link	10
Service Mode.....	11
Service Mode: Pairing.....	12
Service Mode: Start Pairing.....	14
Service Mode: Modify RCU timeout	13
Service Mode: Run Diagnostics.....	16
Operations—TD110 RCU.....	17
Operations—Charge Cradle.....	18
Troubleshooting Guide	20
Parts & Accessories	23
Specifications	23
Warranty Information	23



CRITICAL: These instructions are intended only for installing and operating the remote control equipment described here.

This is not a complete Operator's Manual.

For complete operating instructions, please read the Operator's Manual supplied by your equipment manufacturer.

READ ALL INSTRUCTIONS



CAUTION: Changes or modifications not expressly approved by the party responsible for compliance could void the user's authority to operate the equipment.

Failure to follow the SAFETY PRECAUTIONS may result in radio equipment failure and serious personal injury.

Installation

PROVIDE A SAFETY CUTOFF SWITCH. If maintenance is required, the radio must be disconnected from power
USE PROPER WIRING. Loose or frayed wires can cause system failure, intermittent operation, machine damage, etc.
DO NOT INSTALL IN HOT AREAS. This apparatus can be damaged by heat in excess of 158° F (70° C)

Personal Safety

MAKE SURE MACHINERY AND SURROUNDING AREA IS CLEAR BEFORE OPERATING. Do not activate the remote system unless it is safe to do so.

TURN OFF THE BASE STATION POWER BEFORE WORKING ON MACHINERY. Always disconnect the remote system before doing any maintenance to prevent accidental operation of the machine

Care

KEEP DRY. Do not clean the RCU / base station under high pressure. If water or other liquids get inside the RCU battery or base station compartment, immediately dry the unit. Remove the case and let the unit air dry

CLEAN THE UNIT AFTER OPERATION. Remove any mud, dirt, concrete, etc. from the unit to prevent clogging of buttons, switches, etc. by using a damp cloth.

Maintenance / Welding

DISCONNECT THE RADIO BASE STATION BEFORE WELDING on the machine the base station is connected to. Failure to disconnect will result in the destruction of the radio base station.



CAUTION: Changes or modifications not expressly approved by the party responsible for compliance could void the user's authority to operate the equipment.

Failure to follow the SAFETY PRECAUTIONS may result in radio equipment failure and serious personal injury.

READ ALL INSTRUCTIONS

Lithium Battery Handling Precautions, Transportation, Disposal

- Do not disassemble, crush, or puncture a battery.
- Do not short the external contacts on a battery.
- Do not dispose of a battery in fire or water.
- Do not expose a battery to temperatures above 65 °C (149 °F).
- Keep the battery away from children.
- Avoid exposing the battery to excessive shock or vibration.
- Do not use a damaged battery.
- Always check all applicable local, national, and international regulations before transporting a Lithium-Ion battery.
- Transporting an end-of-life, damaged, or recalled battery may, in certain cases, be specifically limited or prohibited.
- Lithium-Ion batteries are subject to disposal and recycling regulations that vary by country and region. Always check and follow your applicable regulations before disposing of any battery. Contact the *Rechargeable Battery Recycling Corporation* (www.rbrc.org) for U.S.A. and Canada, or your local battery recycling organization.
- Many countries prohibit the disposal of waste electronic equipment in standard waste receptacles.
- Place only discharged batteries in a battery collection container. Use electrical tape or other approved covering over the battery connection points to prevent short circuits.

In the increasingly interconnected world, it is recommended that this mobile wireless application be installed in a manner to prevent any unauthorized access or use. Though the possibility of intentional wireless interference or hijacking is low, the potential to physical tampering with a system poses the greater threat.

The following steps are suggested to ensure the most secure installation possible.

1. Mount the base station within a metal box with a securable door or hatch.
2. Secure the box using a key, preferably of a type that is not widely circulated nor easily duplicated.
3. Run all cable through industry standard conduit. Ensure that fittings make a secure and difficult to breach connection between the metal box and the conduit.
4. Whenever possible, operate the RCU as close to the vehicle as possible. This results in a stronger signal that is harder to override or jam.
5. When not in use store the RCU in such a way as to limit access.
6. All system operators should be made aware that individuals with questionable intentions do exist and to always check their system prior to operation.
7. In the event of a system malfunction, always depress the E-Stop button to safely shut the equipment down.

System Overview

Eaton's **OMNEX Trusted Wireless™** remote control system is portable, long range, programmable and designed as a compact and easy-to-use product. This **Trusted Wireless™** system puts complete control of your equipment where it's needed most, with the operator. It's robust, easy to install and has complete self-diagnostics. The system can be a simple cable replacement or add intelligence to make it a total control package. It's a radio and a CAN bridge all in one.

The **OMNEX Trusted Wireless™ TD110** RCU uses Frequency Hopping Spread Spectrum (FHSS) technology. FHSS devices concentrate their full power into a very narrow signal that randomly hops from frequency to frequency within a designated band. This transmission pattern, along with sophisticated error-checking techniques, enables our industrially hardened **FHSS** signals to overcome interference that commonly affects licensed radios.

The **TD110** comes with 12 buttons to provide the user flexibility to control the functions they need. The RCU uses built in rechargeable Lithium battery pack. When used with the battery charger, the TD110 can use and recharge batteries. Each **TD110** RCU uses a unique ID code to ensure that no two systems will conflict at a job site.

Features

FCC, IC approved

License free in USA and Canada

Upto 4000 foot range @ 900 MHz

Hand held / weatherproof (IP67,IP65) / ergonomic

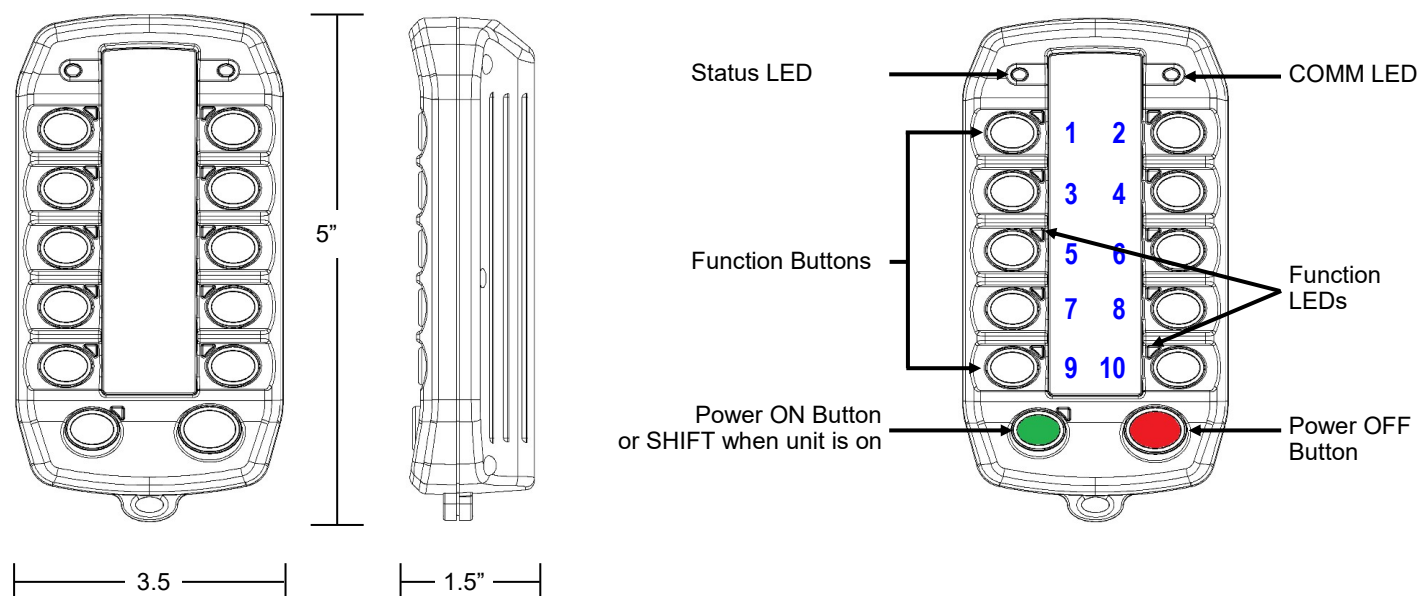
Simple "wire-and-use" installation

Resilient to impact and shock

Available in both 900 MHz and 2.4 GHz

Factory configurable for all custom applications.

TD110 Dimensions and Controls

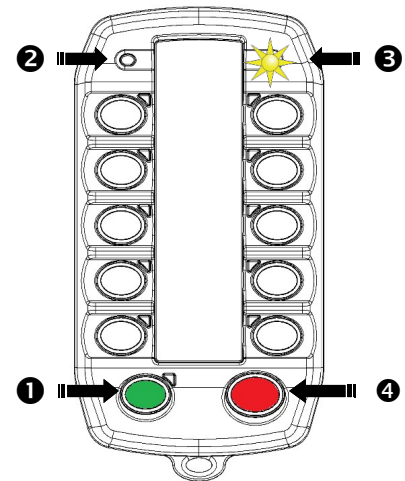


Power the RCU

Before using an RCU, make sure that it has been fully charged



NOTE: Low temperatures reduce battery performance for batteries. Refer to the battery manufacturer's specifications for detailed information on low temperature performance.



Turn ON RCU

1. Turn on the RCU

Press Power [ON] ❶. Refer to the **Light Legend** below for LED states.

Depending on the presence of a powered and paired base station the COMM LED may blink YELLOW ❸.

2. Turn off the RCU

Press the Power [OFF] ❹ .button.

Light Legend

Solid		Slow Flash		Fast Flash		Red Solid		Green Solid		Yellow Solid		Red & Green Alternating	
-------	--	------------	--	------------	--	-----------	--	-------------	--	--------------	--	-------------------------	--

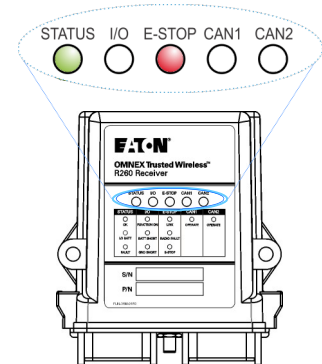
Test the RCU / Base Station Link

Follow these steps to ensure that there is a radio link between the RCU and Base Station. Refer to the Light Legend below for LED states on the Base Station.

1. Base Station

Apply power to the base station and confirm the light pattern as shown in the diagram on the right.

If the base station does not power confirm it was wired correctly. Reference the Wiring Diagram in the *Pin Assignments* section of the base station manual.

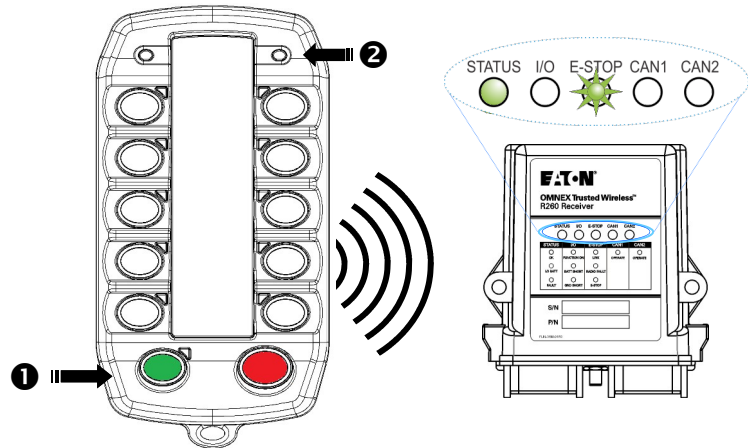


2. Power TD110

Press Power ON ❶ button

The RCU can take from 2-7 seconds to link with the base station.

If the RCU does not power refer to the previous section *Power the RCU*.



The System is now ready for use.

If the base station's (E-STOP) light flashes GREEN the system is ready to use.

Follow *Pair a RCU* in the *Service Mode* section if

1. The base station's (E-STOP) light is solid RED
2. The COMM LED ❷ is solid YELLOW



NOTE: As a battery saving feature the RCU may shut itself off (and the base station will transition all outputs to a safe state) after the configured RCU timeout inactivity period. The *RCU Timeout* feature is configurable within the RCUs *Service Mode* section.

Momentarily operating any button on the RCU, including the [Power] button will restart the timeout monitoring.

Light Legend		Solid	Slow Flash	Fast Flash	Red Solid	Green Solid	Yellow Solid	Red & Green Alternating

Service Mode

Service Mode is available on all TD110 configurations and allows the operator to pair to base station, adjust the RCUs timeout and run diagnostics.

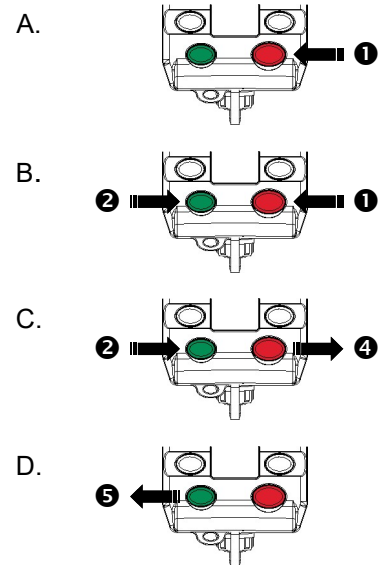
Once the RCU is put in to service mode, navigation and option selection/modification is controlled by four buttons as described by the *Enter Service Mode* and *Navigation*.

The following sections describe each option in detail and how to execute or modify it.

Enter Service Mode

- A. Press and Hold Power OFF ❶ [RED]
- B. Press and Hold Power ON ❷ [GREEN]
Wait for the COMM ❸ LED to be turned ON and immediately proceed to next step.
- C. Release Power OFF ❹ [RED]
- D. Release Power ON ❺ [GREEN]

The COMM LED ❸ will blink YELLOW when unit enters service mode.
If no buttons pressed within 5 minutes after entry to service mode, RCU will automatically turn OFF.

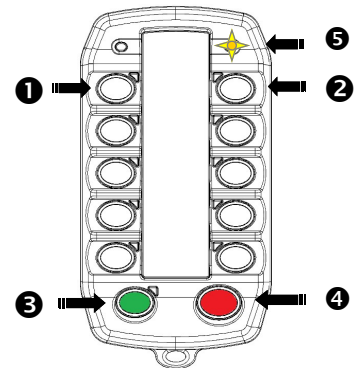


Navigation

Once you have entered service mode you can select the service mode options by using the top left ❶ and right buttons ❷.

The Power ON ❸ [GREEN] will allow you to execute or modify an option. Power OFF ❹ [RED] will allow you to move up from an entry and power off the unit. Only one option is allowed at a time in service mode.

- A. Button ❶ - Modify RCU timeout
- B. Button ❷ - Run Diagnostics
- C. Button ❸ [GREEN] - Pairing TD110



Service Mode: Pairing

Pairing

This function allows you to pair the TD110 with a base station.

Pairing is required to teach a RCU's unique configuration to a base station. Once complete the base station is capable of establishing a two-way radio link with a unique RCU.

Pairing is a three step process

1. Prepare the TD110
2. Prepare the base station
3. Start Pairing

The following sections describes the three step process to pair the TD110 with an base station. Refer to *Troubleshooting Chart #4* for Tips and Considerations.

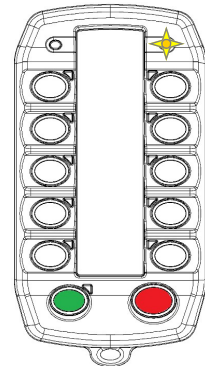


NOTE: It is necessary to associate the RCU to base station when replacing either the RCU or base station.

1. Prepare the TD110

Make sure TD110 is in service mode. **Do not** press the Power ON [GREEN] button.

①



2. Prepare the base station

There are two methods to prepare the base station

- A. Using the magnet on the TD110 or wand (sold separately).
- B. Opening the base station housing and manually initiating the pairing state.

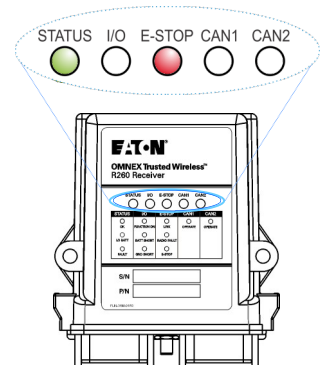
The following section deals with method A. Refer to Appendix A if you need to perform the manual method B then proceed to step 3 *Start Pairing*.

2.1. Power base station

Supply power to the base station. The base station is ready when the base station lights

Status: solid green

E-Stop: solid red



Light Legend

Solid



Slow Flash



Fast Flash



Red Solid



Green Solid



Yellow Solid



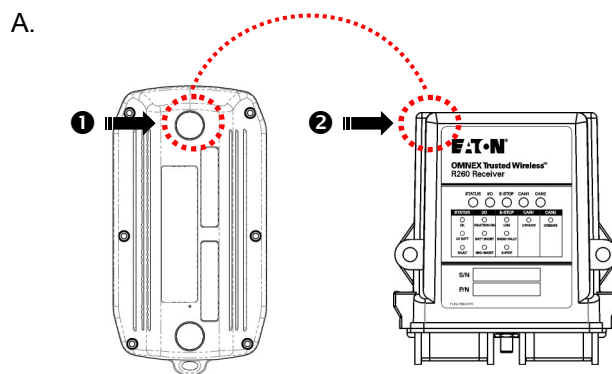
Red & Green Alternating



Service Mode: Pairing

2.2. Initiate base station Setup Mode

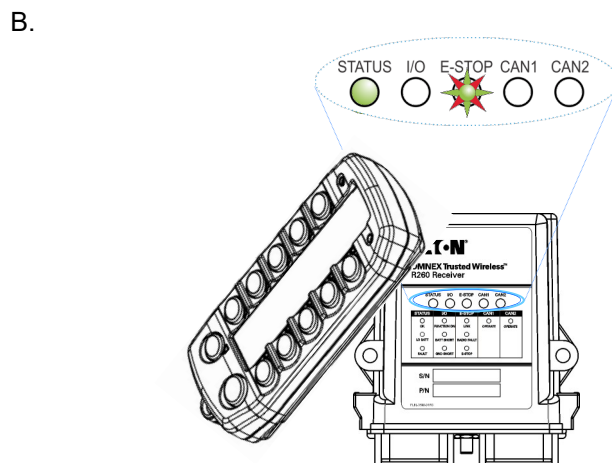
- A. Maneuver the rear of the TD110 so that its magnet **1** is placed over the top left corner **2** of the base station.



- B. Adjust the TD110 position until the base station **E-Stop** light slow flashes green.

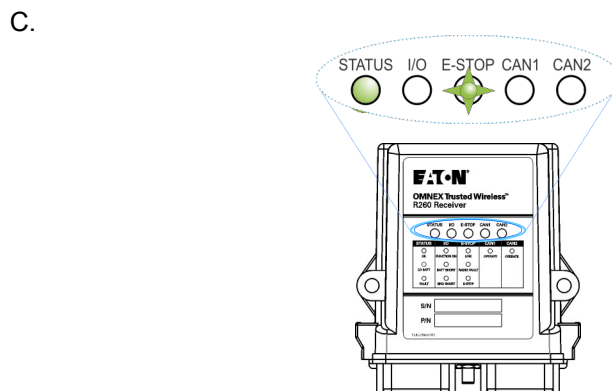
Status: solid green

E-Stop: slow flashing green



- C. Remove the TD110 when the base station **E-Stop** light slow flashes green quickly.

E-Stop: slow green



NOTE: If the base station is left in Setup Mode idle for over 30 seconds, the base station will time out. The **Status** light stays solid green and **E-Stop** light will flash red slowly and after Setup Mode times out. To return to Setup Mode repeat step 2.2.

Light Legend

Solid		Slow Flash		Fast Flash		Red Solid		Green Solid		Yellow Solid		Red & Green Alternating	
-------	--	------------	--	------------	--	-----------	--	-------------	--	--------------	--	-------------------------	--

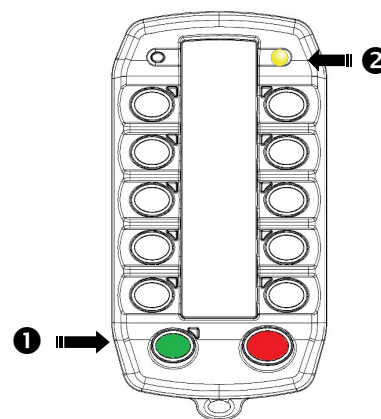
Service Mode: Start Pairing

3. Start Pairing

- A. Press the TD110 Power ON [GREEN] button **1** to start the pairing process.

The pairing will start and the COMM LED **2** on TD110 will turn on YELLOW

A.

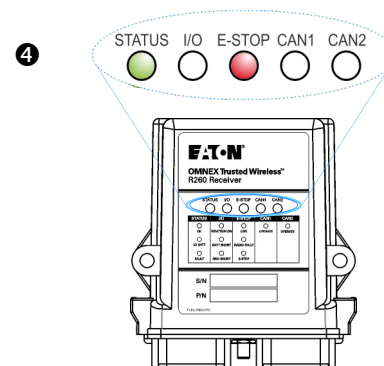
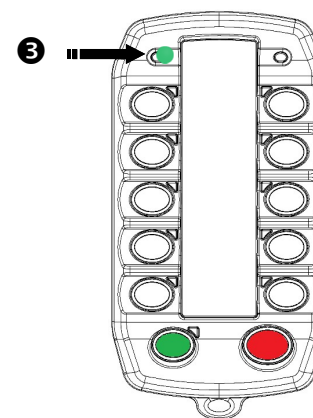


- B. Pairing is complete when

1. TD110 STATUS LED **2** turns GREEN
2. Base station E-Stop light will change from green to red **4**.

E-Stop: solid red

B.



NOTE: If the pairing fails the TD110 STATUS LED will turn ON RED. Correct any errors, power cycle the RCU and base station, and then repeat the pairing process.

If repeated attempts at pairing fails, contact your service representative for assistance as there may be a setup or hardware failure.

Light Legend

Solid



Slow Flash



Fast Flash



Red Solid



Green Solid



Yellow Solid



Red & Green Alternating



Service Mode: Modify RCU time out

RCU Timeout

As a battery saving feature the RCU has the ability to turn it self off after a defined period of inactivity.

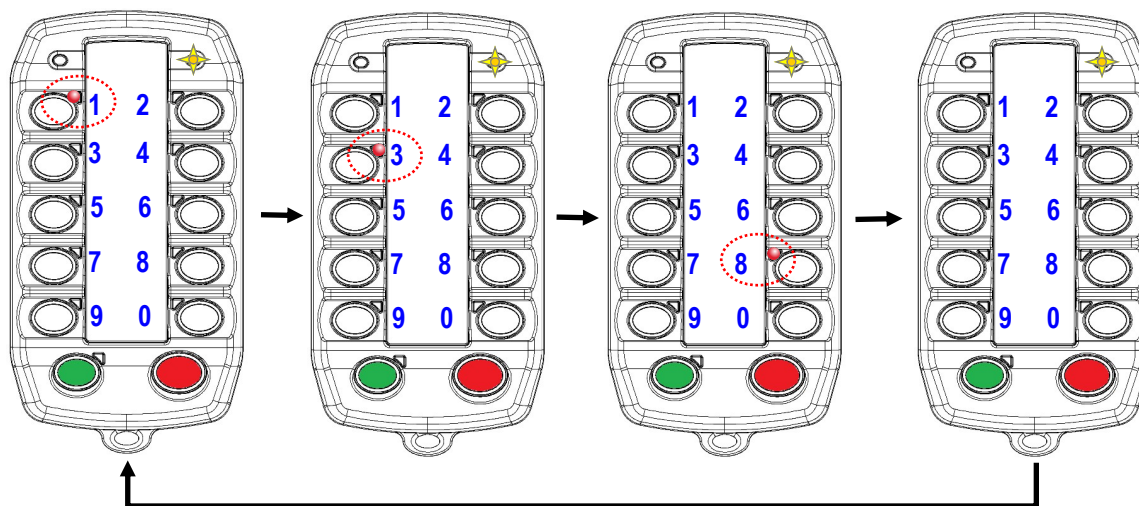
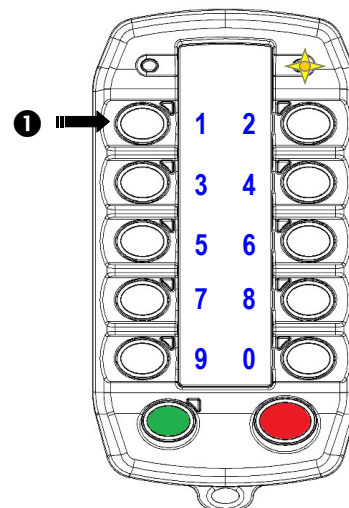
The RCU timeout is configurable from 1 to 999 minutes in increments of 1 minutes. The default value is 30 or timeout feature disabled.

To adjust the RCU timeout press button ①. T

10 user buttons represent numeric values from 1-9 as shown on the picture left. LEDs on the 10 user buttons will flash RED to display the current user settings.

First RED flash represent the 100's figure of RCU timeout. The second RED flash represent the 10's figure of RCU timeout. The third RED flash represent the 1's figure of RCU timeout.

For example, a time out of 138minutes is displayed as below.



Press three buttons in sequence to set the timeout. First button represent 100's , second button represent 10's, and third button represent 1's figure of RCU timeout. When each button is pressed, corresponding button LED will turn on GREEN momentarily. LEDs will display the new value once the button sequence is complete.

Press and release Power ON [GREEN] to save your changes. Press and release Power OFF [RED] to abort any changes and turn off unit.



CAUTION: When a RCU turns off due to inactivity it will cause the base station it is communicating with to go in to its safe state. The base station safe state by default is all functions off unless specified differently by your equipment supplier.

You must be aware of any behavior that may change due to adjusting the timeout and consider all safety aspects of operation. Consult with the supplier of your equipment if you are unsure of affected safety operation.

Failure to follow SAFETY PRECAUTIONS may result in equipment failure and serious personal injury.

Light Legend

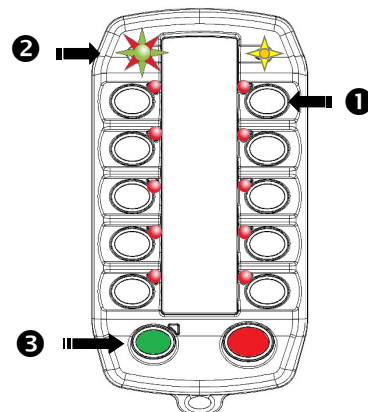
Solid		Slow Flash		Fast Flash		Red Solid		Green Solid		Yellow Solid		Red & Green Alternating	
-------	--	------------	--	------------	--	-----------	--	-------------	--	--------------	--	-------------------------	--

Service Mode: Run Diagnostics

Test Buttons and Vibrator

1. On the TD110 press top right Button ❶ to enter Diagnostic mode .
2. STATUS LED will blink RED and GREEN ❷. All LEDs will turn on RED.
3. Press each buttons to test. On each button press, the associated button LED which was RED will change to GREEN.
4. Press [GREEN] button ❸ to test Vibrator. This will activate Vibrator for 1 second.

Press and release Power OFF [RED] to exit diagnostic mode and turn off unit.



CAUTION: Only clean a button or the TD110 with a soft cloth lightly dampened with water.

DO NOT clean a button or the TD110 with any sharp instruments or objects that can cut or damage the button membrane or housing. **DO NOT** pour any liquids, use a hose, or pressured water directly on the TD110. Consult with the supplier of your equipment if you are unsure of correct cleaning procedures.

Failure to follow **CLEANING PROCEDURES** may result in equipment failure and serious personal injury.

Light Legend

Solid



Slow Flash



Fast Flash



Red Solid



Green Solid







Yellow Solid









Red & Green Alternating



Operations - TD110 RCU

Indicators / Items	Description
	Occurs whenever a function is pressed. Will also remain on momentarily on Power Up.
	RCU is in Operating mode. (Data is sent to and received from base station)
	Low Battery. (Note: Low batteries will last approximately 1 hour once the Low Battery light begins to flash). Action: Change or Recharge Batteries
	An internal error is preventing the RCU from operating (When available, a specific error message is displayed on the screen.)
Out of range vibrate notification	When the RCU moves out of radio range of the base station, the RCU vibrates to alert the operator. Move the RCU closer to the base station within radio range to re-link.
Other vibration notifications	Other vibration notifications can also be used (defined under application control) to alert the operator when warnings or alarms happen.

Light Legend	Solid 	Slow Flash 	Fast Flash 	Red Solid 	Green Solid 	Yellow Solid 	Red & Green Alternating 
--------------	-------------------------------------------------------------------------------------------	------------------------------------------------------------------------------------------------	------------------------------------------------------------------------------------------------	-----------------------------------------------------------------------------------------------	---------------------------------------------------------------------------------------------------	----------------------------------------------------------------------------------------------------	---------------------------------------------------------------------------------------------------------------

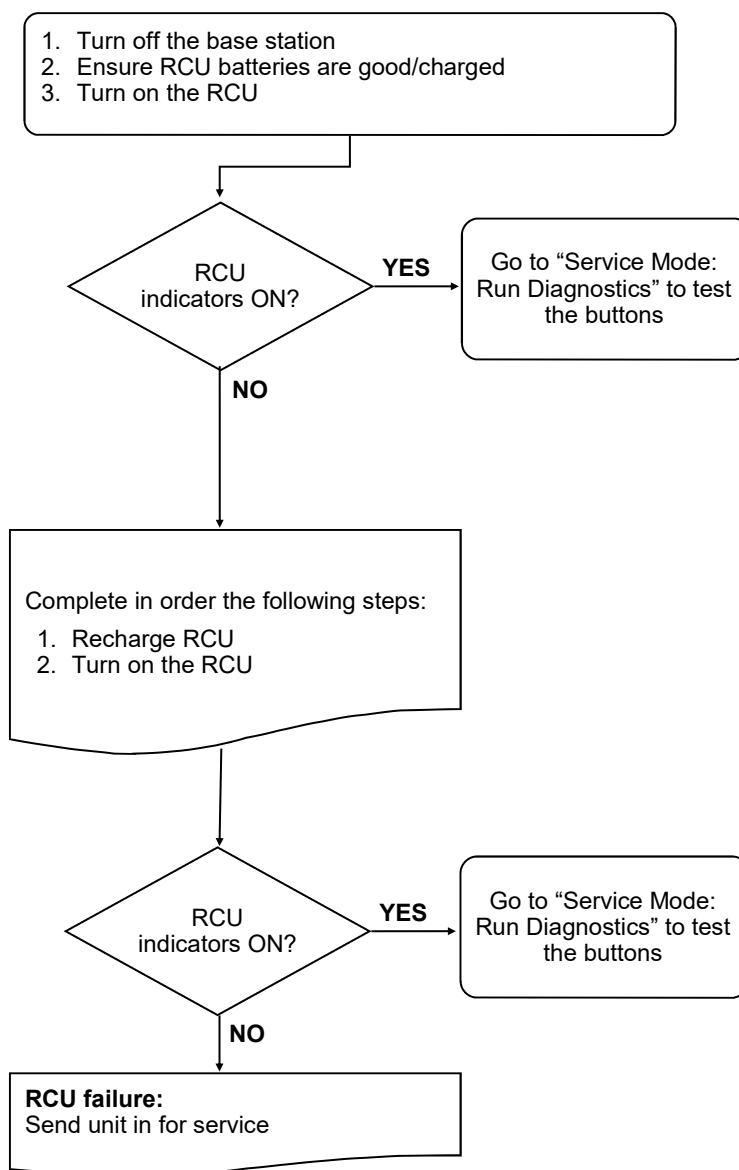
Operations - Charge Cradle

Items	Description																											
Charging	<ul style="list-style-type: none">The cradle will start charging the TD110 RCU when the vehicle battery voltage is above 12.25V with the RCU inserted.During charging, if the vehicle battery voltage drops below 12.0V, the charging will be suspended.If the charging is suspended, it will not resume charging until the battery is above 12.7V (Allowing time for the vehicle's battery to recharge and prevent draining the vehicle battery)At any time when the battery voltage is above 12.25V, the RCU is removed and reinserted, the charging will start again.																											
LED Indicator	<ul style="list-style-type: none">OFF: Not charging, fully charged RCU or vehicle voltage too lowON: Charging RCUFLASHING: Error charging RCU. Possible causes:<ul style="list-style-type: none">Alkaline batteries in RCU (not rechargeable)NiCad od Nickel Metal Hydride batteries in RCU (Cannot be contactlessly charged)The cradle or the battery pack is too hot (over 35°C)..																											
Connector	<table><tr><th>Pin</th><th>Name</th><th>Description</th></tr><tr><td>1</td><td>Power</td><td>Vehicle power supply – (9-32VDC)</td></tr><tr><td>2</td><td>Ground</td><td>Vehicle power ground</td></tr><tr><td>3</td><td>CAN-H</td><td>CAN bus High</td></tr><tr><td>4</td><td>CAN-L</td><td>CAN bus Low</td></tr><tr><td>5</td><td>RLY-NO</td><td>RCU Present Relay – normally open. 0.5A max</td></tr><tr><td>6</td><td>RLY-NC</td><td>RCU Present Relay – normally closed. 0.5A max</td></tr><tr><td>7</td><td>RLY-COM</td><td>RCU Present Relay – common</td></tr><tr><td>8</td><td>PARK IN</td><td>“Vehicle in Park” input when > 6V</td></tr></table> <p>RCU Present Outputs:</p> <ul style="list-style-type: none">Connections 5-8 can be used to wire to an indicator to alert the vehicle operator if the RCU is not placed in the cradle.The PARK-IN input is used to indicate when the vehicle is stationary (typically neutral or park indicator).The “RCU Present” relay will be energized (RLY-NO connected to RLY-COM), after a 5 second delay, if the vehicle is NOT in park and the RCU is missing.	Pin	Name	Description	1	Power	Vehicle power supply – (9-32VDC)	2	Ground	Vehicle power ground	3	CAN-H	CAN bus High	4	CAN-L	CAN bus Low	5	RLY-NO	RCU Present Relay – normally open. 0.5A max	6	RLY-NC	RCU Present Relay – normally closed. 0.5A max	7	RLY-COM	RCU Present Relay – common	8	PARK IN	“Vehicle in Park” input when > 6V
Pin	Name	Description																										
1	Power	Vehicle power supply – (9-32VDC)																										
2	Ground	Vehicle power ground																										
3	CAN-H	CAN bus High																										
4	CAN-L	CAN bus Low																										
5	RLY-NO	RCU Present Relay – normally open. 0.5A max																										
6	RLY-NC	RCU Present Relay – normally closed. 0.5A max																										
7	RLY-COM	RCU Present Relay – common																										
8	PARK IN	“Vehicle in Park” input when > 6V																										
CAN operation	<p>The cradle will transmit a status message every 250mSec. The status message has a PGN of 61439. The status message contains the following information:</p> <table><tr><th>Position</th><th>Description</th></tr><tr><td>1.1</td><td>1 = RCU present</td></tr><tr><td>1.2</td><td>1 = charging RCU</td></tr></table> <p>The default CAN ID of the cradle is 144 (90H). This can be changed by sending the following CAN message with PGN 61328.</p> <table><tr><th>Position</th><th>Description</th></tr><tr><td>1</td><td>Change CAN ID command 70, 46H</td></tr><tr><td>2</td><td>Current CAN ID (typically 144 (90H).</td></tr><tr><td>3</td><td>New CAN ID.</td></tr></table> <p>CAN priority must be 3 for all packets. CAN data rate is 250 kbps.</p>	Position	Description	1.1	1 = RCU present	1.2	1 = charging RCU	Position	Description	1	Change CAN ID command 70, 46H	2	Current CAN ID (typically 144 (90H).	3	New CAN ID.													
Position	Description																											
1.1	1 = RCU present																											
1.2	1 = charging RCU																											
Position	Description																											
1	Change CAN ID command 70, 46H																											
2	Current CAN ID (typically 144 (90H).																											
3	New CAN ID.																											
CAN Termination	CN5 Jumper settings: <div><div><div><div></div><div></div></div><div>NO</div></div><div><div><div></div><div></div></div><div>YES</div></div></div>																											

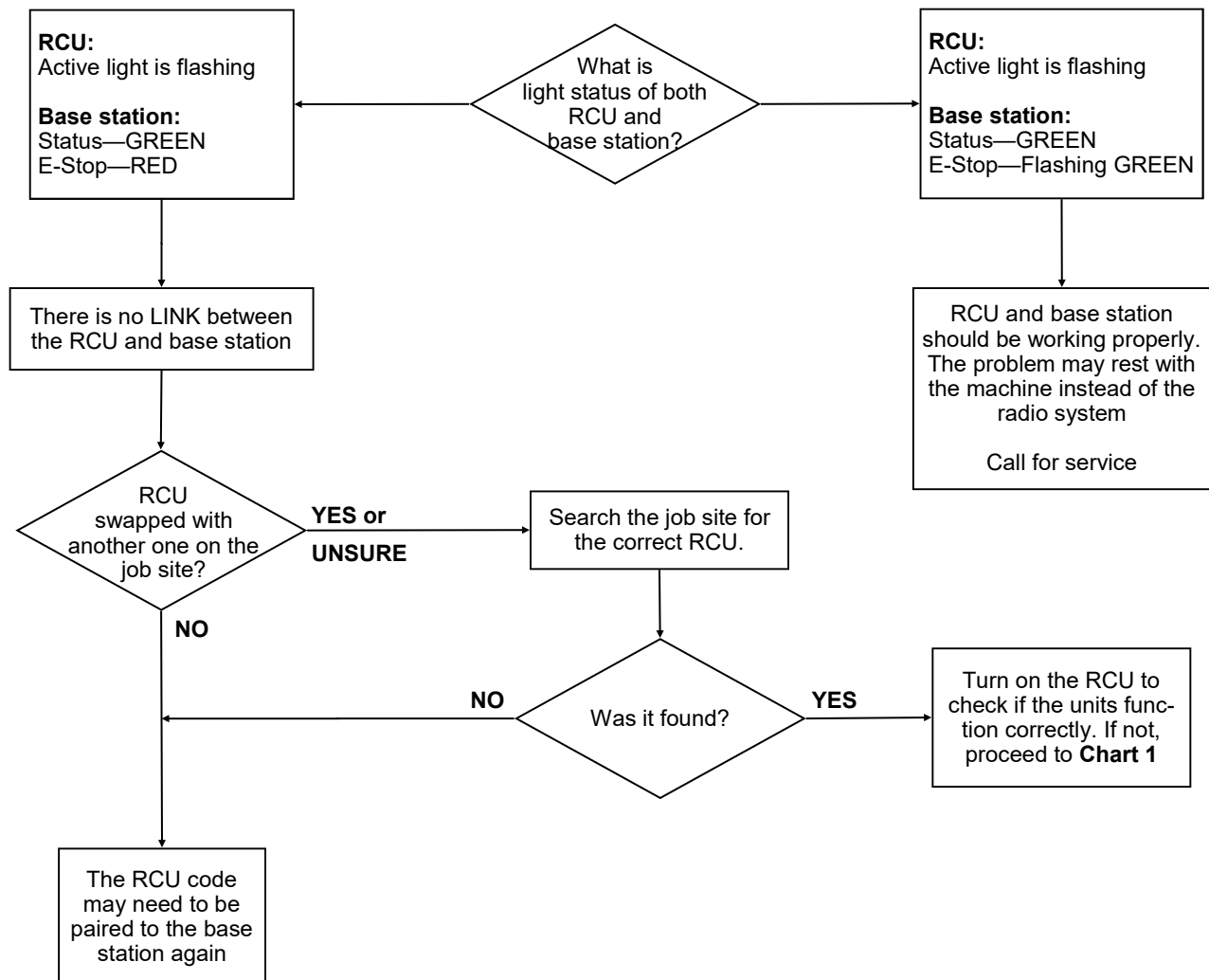
Light Legend	Solid	Slow Flash	Fast Flash	Red Solid	Green Solid	Yellow Solid	Red & Green Alternating
							

Test the Base station—Refer to the base station's manual

Test the RCU—TD110



Testing the RCU / Base Station Communication



Considerations when Pairing

Potential downloading issues

If testing of the base station and RCU both show the system as working (Chart 1 & 2), then the RCU and base station will both go into Pairing/Configuration mode.

Possible issues could arise during Step 4, the teaching phase of pairing. In this case there are 2 symptoms to look for:

1. The Link light on the base station will not turn GREEN when the power switch is toggled on the RCU to download
2. The base station will “time out” indicating that it didn’t receive a signal from the RCU within the 30 seconds from the time the base station was put into Setup Mode.

If all indications appear normal during the pairing phase, test the link by turning on the RCU (note: the RCU remains in service mode after pairing in Step 4).

1. If the Link light on the base station doesn’t turn GREEN, the base station didn’t receive all of the information that was sent from the RCU.

Possible Solutions

1. Try the Downloading steps again
2. If this doesn’t correct the problem, send both the RCU and base station in for service.



NOTE: If possible try to determine whether the fault lies with the RCU or base station by completing the Re-programming procedure with a different RCU. If this step works, then the fault lies with the original RCU. If not, the fault may lie with the base station.

Reprogramming Tips:

1. Be patient and deliberate when pressing the Power and E-Stop buttons in the correct order during power up in Configuration mode
2. Use a pointy instrument to depress the Setup button on the base station (i.e. a pen) as the button is relatively small
3. Follow each step as laid out in the procedure
4. Never lay the base station circuit board down on anything metallic (there are contact points on the back which could contact the metal and damage the base station)

Parts & Accessories

Eaton Part Number	Description
FMEC-3840-02	Plastic Holster, Black
ASSY-4041-01	Charge Cradle, Generic
ASSY-4041-02	Charge Cradle, charge only

Specifications

	TD110 RCU
Size	8.0" x 3.0" x 1.8" (203mm x 76mm x 46mm)
Weight	.95 lbs (434g)
Construction	Industrially robust, hardened plastic, chemical resistant
Input Power	2AA rechargeable Lithium Ion
Battery Life	30 hours
Operating Temperature Range	-4°F to +131°F (-20°C to +55°C)
Storage temperature Range	-40°F to +136°F (-40°C to +58°C)
Outputs	N/A
Antenna	Internal
Approvals	USA- FCC part 15.247 Canada- IC RSS 210 Issue 6, May. 2020

FCC Rules and Compliance

This device complies with FCC Rules Part 15 operation is subject to the following two conditions:

1. This device may not cause harmful interference.
 2. This device must accept any interference, including interference that may cause undesired operation of the device.
- Changes or modifications to this device, not expressly approved by Cooper Industries (Electrical) Inc. could void the user's authority to operate the equipment

Industry Canada Notifications

This device complies with Industry Canada's license-exempt RSSs. Operation is subject to the following two conditions:

- (1) This device may not cause interference; and
- (2) This device must accept any interference, including interference that may cause undesired operation of the device.

Le présent appareil est conforme aux CNR d'Industrie Canada applicables aux appareils radio exempts de licence. L'exploitation est autorisée aux deux conditions suivantes:

- (1) l'appareil ne doit pas produire de brouillage;
- (2) l'utilisateur de l'appareil doit accepter tout brouillage radioélectrique subi, même si le brouillage est susceptible d'en compromettre le fonctionnement.

Warranty

EATON, Controls and Power Conversion Division, Wireless Solutions, warrants to the original purchaser that the Eaton Wireless products are free from defects in materials and workmanship under normal use and service for a period of ONE YEAR, parts (EXCLUDING: SWITCHES, CRYSTALS, OR PARTS SUBJECT TO UNAUTHORIZED REPAIR OR MODIFICATION) and labor from the date of delivery as evidenced by a copy of the receipt. EATON entire liability and your exclusive remedy shall be, at EATON's option, either the (a) repair or (b) replacement of the EATON Wireless product which is returned within the warranty period to EATON Wireless freight collect by the EATON APPROVED carrier with a copy of the purchase receipt and with the return authorization of EATON Wireless. If failure has resulted from accident, abuse or misapplication, EATON shall have no responsibility to repair or replace the product under warranty. In no event shall EATON be responsible for incidental or consequential damage caused by defects in its products, whether such damage occurs or is discovered before or after replacement or repair and whether or not such damage is caused by the negligence of EATON.

EATON eMobility Division

Mobile Wireless Control Solutions

74-1833 Coast Meridian Road
Port Coquitlam, BC, Canada
V3C 6G5

Tel: 604-944-9247

Fax: 604-944-9267

Toll Free: 1-800-663-8806

www.eaton.com/wireless