

## **Certification Exhibit**

**FCC ID: I6HWS001  
IC: 21449-WWS001**

**FCC Rule Part: 15.247  
IC Radio Standards Specification: RSS-247**

**ACS Project Number: 16-3035**

**Manufacturer: GTO Access Systems, LLC  
Model: 10009364**

## **Manual**

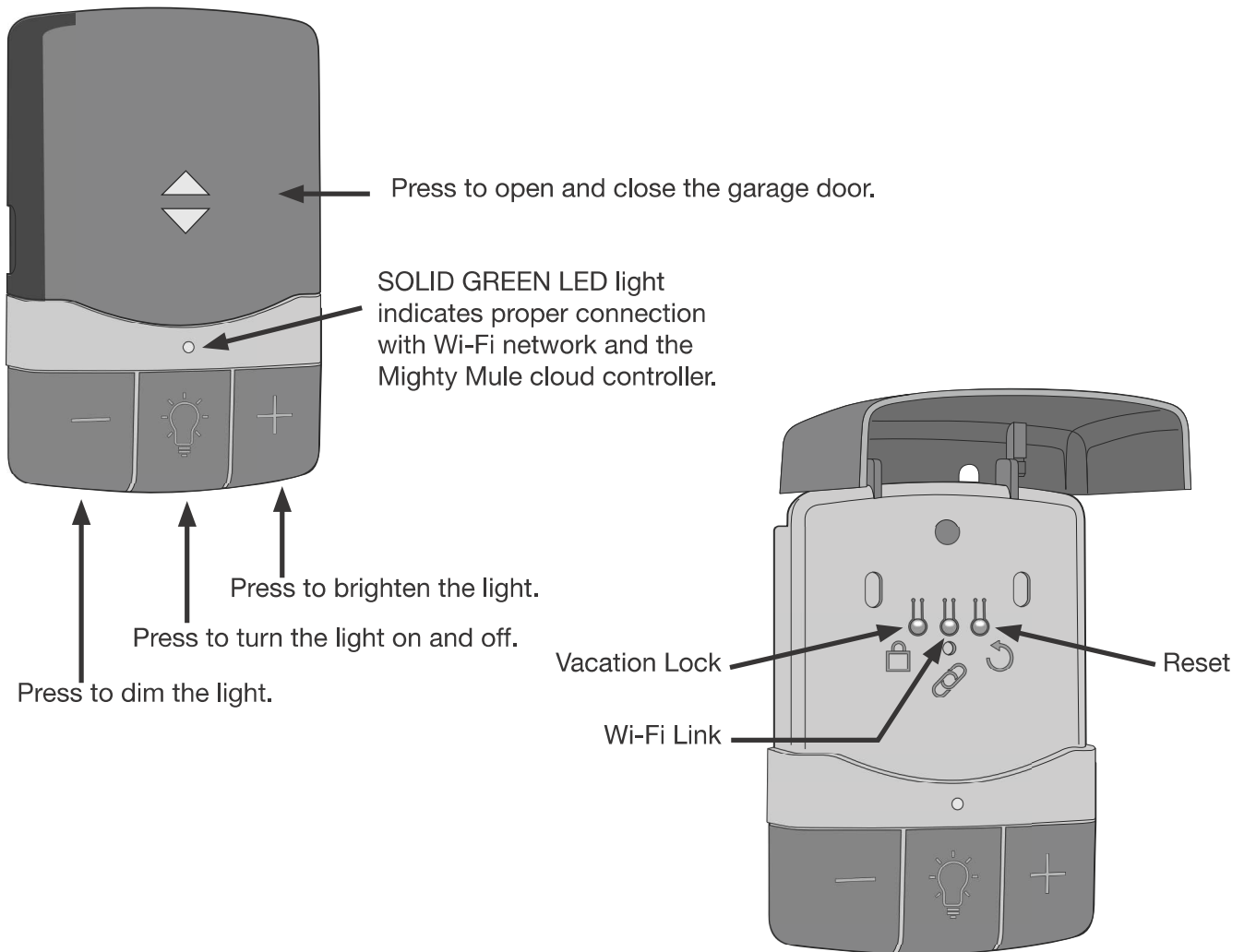


## MM-WWS Wi-Fi Wall Station Instructions

This smart wall station controller completely replaces your previous wall station controller, allowing you to operate the light and door using the push buttons. Of course, the smart wall station controller does much more when paired with our Android or iOS application. It can operate your door, manage your family access, control your lights and be informed of people coming and going, all available while you are on the go.

### Requirements:

In order to use the smart wall station controller with the app, you will need a Wi-Fi network with Internet connectivity, a strong Wi-Fi signal in your garage where you are going to install the smart wall station controller and an Android or iOS phone. See page 3 for instructions on down loading and installing the Mighty Mule Smart Control App.



## OVERVIEW

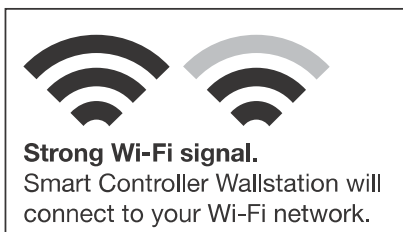
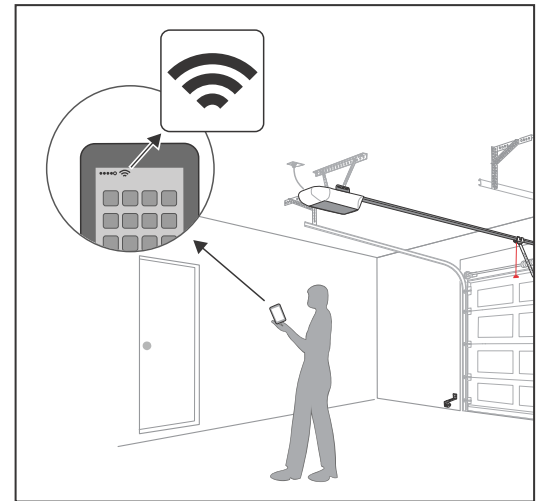
### Test the Wi-Fi Signal Strength

It is paramount that the smart wall station controller can receive a strong signal from your home's Wi-Fi router.

Before you affix the smart wall station controller to the wall, it is a good idea to survey your location to check the Wi-Fi signal. To do this, take your smart phone, connect it to your Wi-Fi network and then place it on the wall where you want to attach the wall controller.

If you have 2 or 3 bars on your phone for the Wi-Fi network, then you're good to proceed. Otherwise, use one of these options to extend your Wi-Fi network's range.

- Move your Wi-Fi router closer to the garage.
- Buy a Wi-Fi range extender.



See page ?? to connect the Smart Control Wall station to your mobile device.

### Installation instructions for wall controller

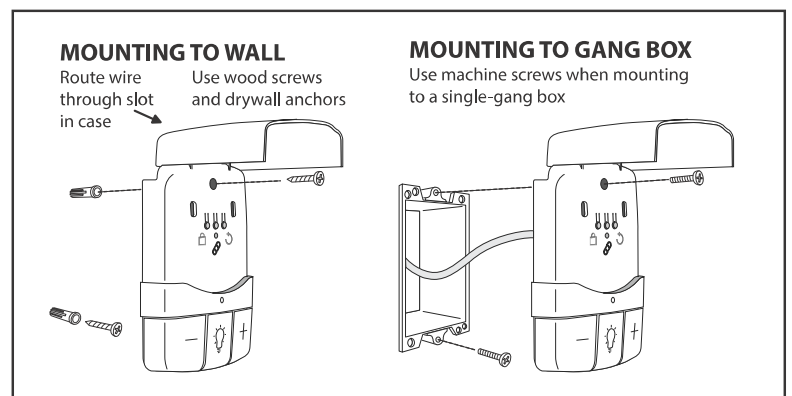
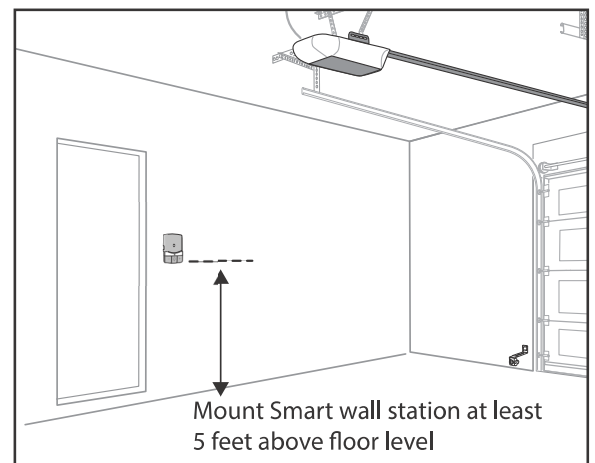
The smart wall station controller is typically mounted inside the garage on the wall adjacent to the door into the house. It can also be mounted in any other convenient place, keeping in mind the below requirements.

#### Placement on wall

The construction of your wall can adversely affect the strength of the Wi-Fi signal. A good spot to mount the smart wall station controller is on a drywall covered wall constructed with wood studs and with blown-in or batt insulation.

If possible, avoid affixing the wall controller to:

- Solid brick or concrete walls
- Metal studs or walls with metal inside
- On top of or near AC electrical lines



## Wiring the Smart Controller

Always unplug the head unit's AC power cord before wiring up or repositioning the smart wall controller!

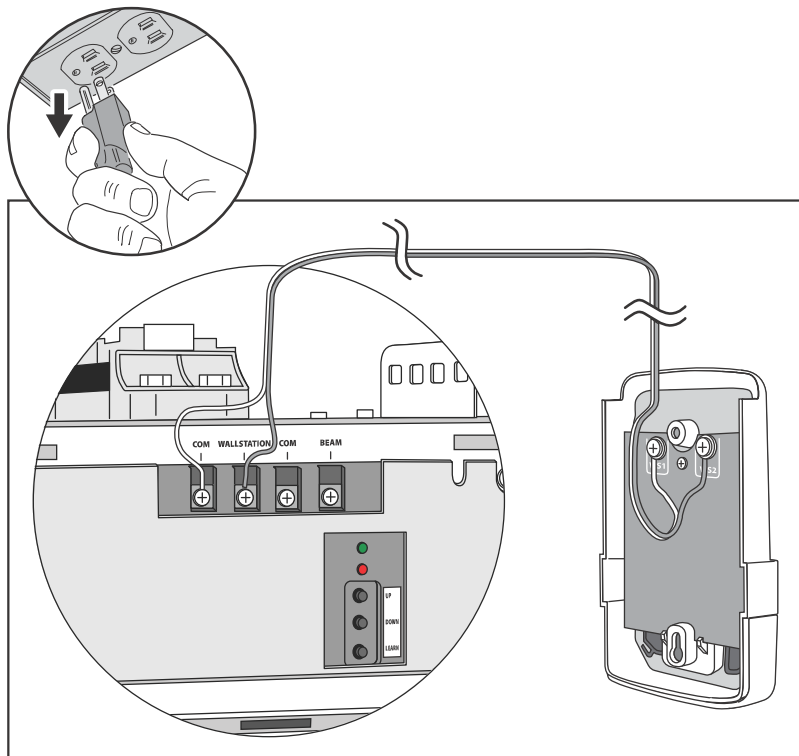
Next, hook up the smart wall station controller to the garage door operator head unit using either the supplied or per-existing wires.

Make sure that you connect the COM terminal on the smart wall station controller to the COM terminal on the garage door operator head unit. Use the wire that has a black mark to connect the COM terminals.

Likewise, connect the WS terminal on the smart wall station controller to the WALLSTATION terminal on the garage door operator head unit.

### IMPORTANT

Wire polarity is critical with the Wi-Fi Smart Control Wall station.

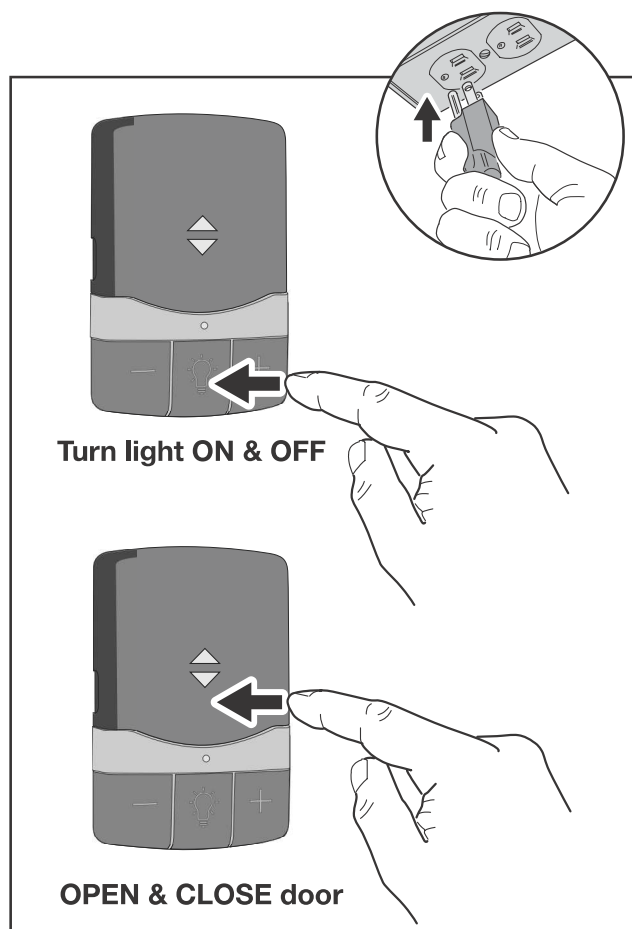


## Test the Smart Wall Station Controller

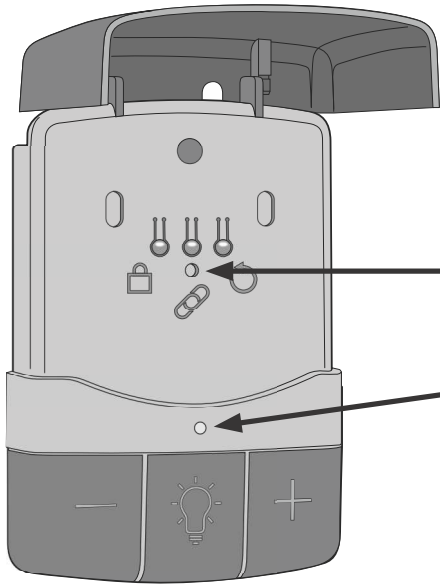
Once you have connected the smart wall station controller to the garage door operator, check that it is properly working by using it to operate the light and door:

- Plug the garage door head unit's AC power cord back into an outlet.
- Wait for a few moments until the LED on the wall controller comes on.
- Press the light button to turn the light on and off.
- Press the cycle door button to operate the door.

If you are unable to operate the garage door using the smart wall controller's buttons, please go to ....



## LEDs on the Smart Wall Station Controller



The smart wall station has two LEDs that convey information at a glance.

The top LED will primarily provide information on the vacation mode:

The bottom LED tells you the state of the Wi-Fi connection and device:

## Mighty Mule Smart Control App:

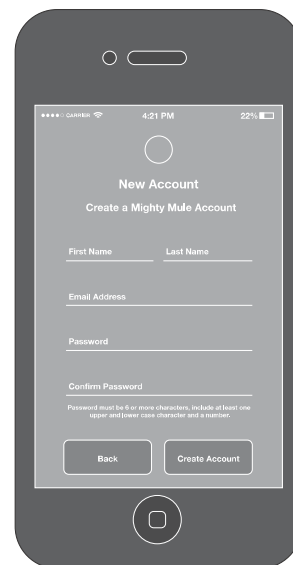
### Get Software and First Time Experience



On your smart phone, visit the app store and install the 'Mighty Mule Smart Control' application. The first time you run it, you'll have to register and create an account. Once that is complete, sign in with your new account.

### Add Your Device

To add your device, begin by tapping the plus button at the bottom right of the app. Let the app walk you through the process of adding the device. You'll need to be beside the smart wall controller to walk through the steps. Once you're complete you will have two devices in your app - a garage door and a light.

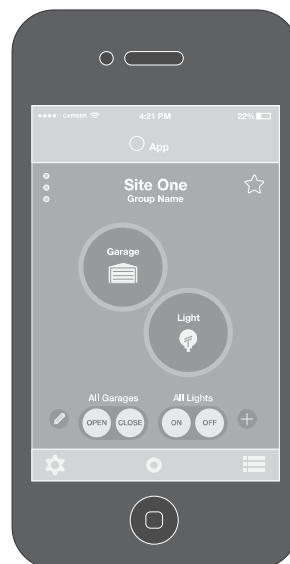


## The Basis of the App

The main screen of the app allows you to see the current state of the garage door and to also operate it. If your garage door is fully closed, then the app will show the garage door fully closed. Otherwise, if the door is partially or fully open, the app will show the door open.

To close or open the door, double tap on the garage door icon. Likewise, double tap on the light icon to turn the garage door light on or off.

If you single tap on a device icon, you will be shown the detailed view of the device. Here you can set the dimming level of the light and also see a history of who operated the device.



## Managing Your Devices and Members

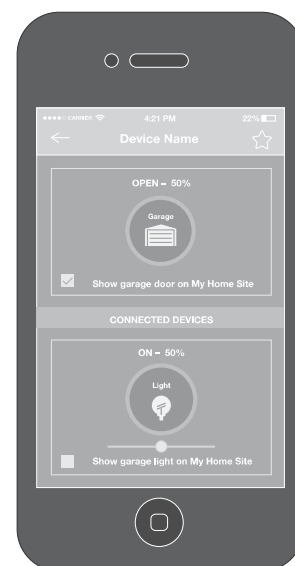
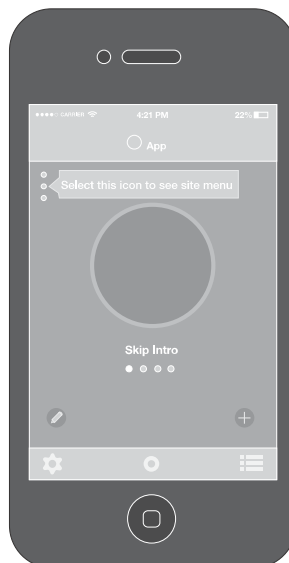
Tap on the Site Menu icon, which is the three circles stacked on top of each other, located in the top left of the main screen. In this list you can remove devices from your site. You can invite other people to join your site, and remove existing ones.

### Inviting Others

To invite a member, select the Invite New Member button at the bottom of the Site Menu.

When you invite another member, you are asked to select their permission level. There are three classes of members in this application:

- You, the device owner. You are the one who created the site and added the device.
- Administrators, which are people that can invite others, change their permissions as well as operate and view all devices.
- Regular member, which can view and operate specific devices.



**WARNING:** Changes, modifications or adjustments not expressly approved by GTO Access Systems, LLC could void the user's authority to operate this equipment. There Are No User Serviceable Parts.

**NOTICE:** This equipment has been tested and found to comply with the limits for a Class B digital device, pursuant to part 15 the FCC. These limits are designed to provide reasonable protection against harmful interference in a residential installation. This equipment generates, uses and can radiate radio frequency energy and, if not installed and used in accordance with the instructions, may cause harmful interference to radio communications. However, there is no guarantee that interference will not occur in a particular installation. If this equipment does cause harmful interference to radio or television reception, which can be determined by turning the equipment off and on, the user is encouraged to try to correct the interference by one or more of the following measures:

- Reorient or relocate the receiving antenna.
- Increase the separation between the equipment and receiver.
- Connect the equipment into an outlet on a circuit different from that to which the receiver is connected.
- Consult the dealer or an experienced radio/TV technician for help.

**NOTICE:** This device complies with part 15 of the FCC. Operation is subject to the following two conditions: (1) this device may not cause interference, and (2) this device must accept any interference, including interference that may cause undesired operation of the device.

This device complies with Industry Canada license-exempt RSS standard(s). Operation is subject to the following two conditions: (1) this device may not cause interference, and (2) this device must accept any interference, including interference that may cause undesired operation of the device.

Le présent appareil est conforme aux CNR d'Industrie Canada applicables aux appareils radio exempts de licence. L'exploitation est autorisée aux deux conditions suivantes : (1) l'appareil ne doit pas produire de brouillage, et (2) l'utilisateur de l'appareil doit accepter tout brouillage radioélectrique subi, même si le brouillage est susceptible d'en compromettre le fonctionnement.

**Radio Frequency (RF) Exposure Information:** This equipment complies with radiation exposure limits set forth for an uncontrolled environment. This equipment should be installed and operated with minimum distance 20 cm between the radiator and your body. This transmitter must not be co-located or operating in conjunction with any other antenna or transmitter.

Cet équipement est conforme aux limites d'exposition aux radiations dans un environnement non contrôlé. Cet équipement doit être installé et utilisé à distance minimum de 20 cm entre le radiateur et votre corps. Cet émetteur ne doit pas être co-localisées ou opérant en conjonction avec tout autre antenne ou transmetteur.

GTO Sales: 800-543-4283 • Fax 850-575-8912

GTO Technical Service 800-543-1236

For 24 hour/day, 7 day/week Technical Service visit <http://support.gtoinc.com>

For more information on Mighty Mule's full line of Garage Door Operators, Gate Operators, Accessories and Access Controls, visit [www.mightymule.com](http://www.mightymule.com)