

Appendix C Test Site Descriptions

1 Hammond Farm – 12 January 2007

The site is located on the Hammond farm which is 2.8 km south east of Ashton Station on Hwy 7. Coordinates are 45 deg 09'26.70" N 76 deg 05'16.07" W. The cables had 25 meters of lead-in, 400 meters of active cable and 20 meters of lead-out with 50 ohm terminations at the end of the lead-out. The cables were on the surface of a hay stubble field and were about 1.5 meters apart.

Test personnel were John Patchell and Bill Hodgins.

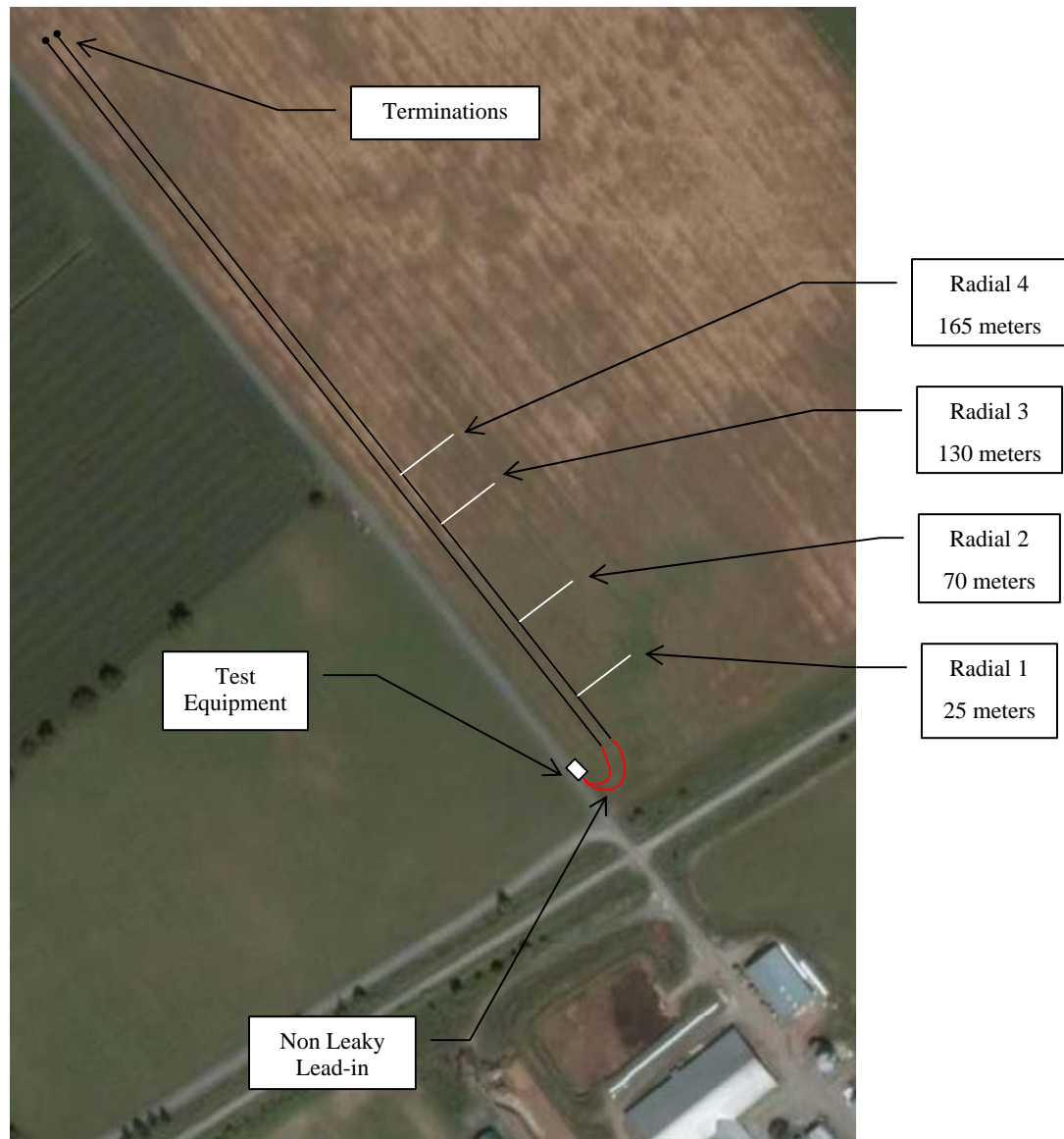


Figure C-1 Hammond Farm - Satellite View and Cable Location



Figure C-2 Hammond Farm - Looking North West from Start of Cables – Vehicle with test equipment in left background



Figure C-3 Antenna in Horizontal Position



Figure C-4 Antenna in 2m Vertical Position

2 SITE – 11 April 2006

This site is at Senstar-Stellar's facility at 119 John Cavanagh Drive, Carp, Ontario. The cables have 25 meters of lead-in and 400 meters of active cable. Cable separation is 1.5 m and burial depth is 23 cm. Both cables are terminated with 50 ohm loads.

Test personnel were John Patchell and Ashley Bridges.



Figure C - 5 SITE Satellite Photo and Cable Location

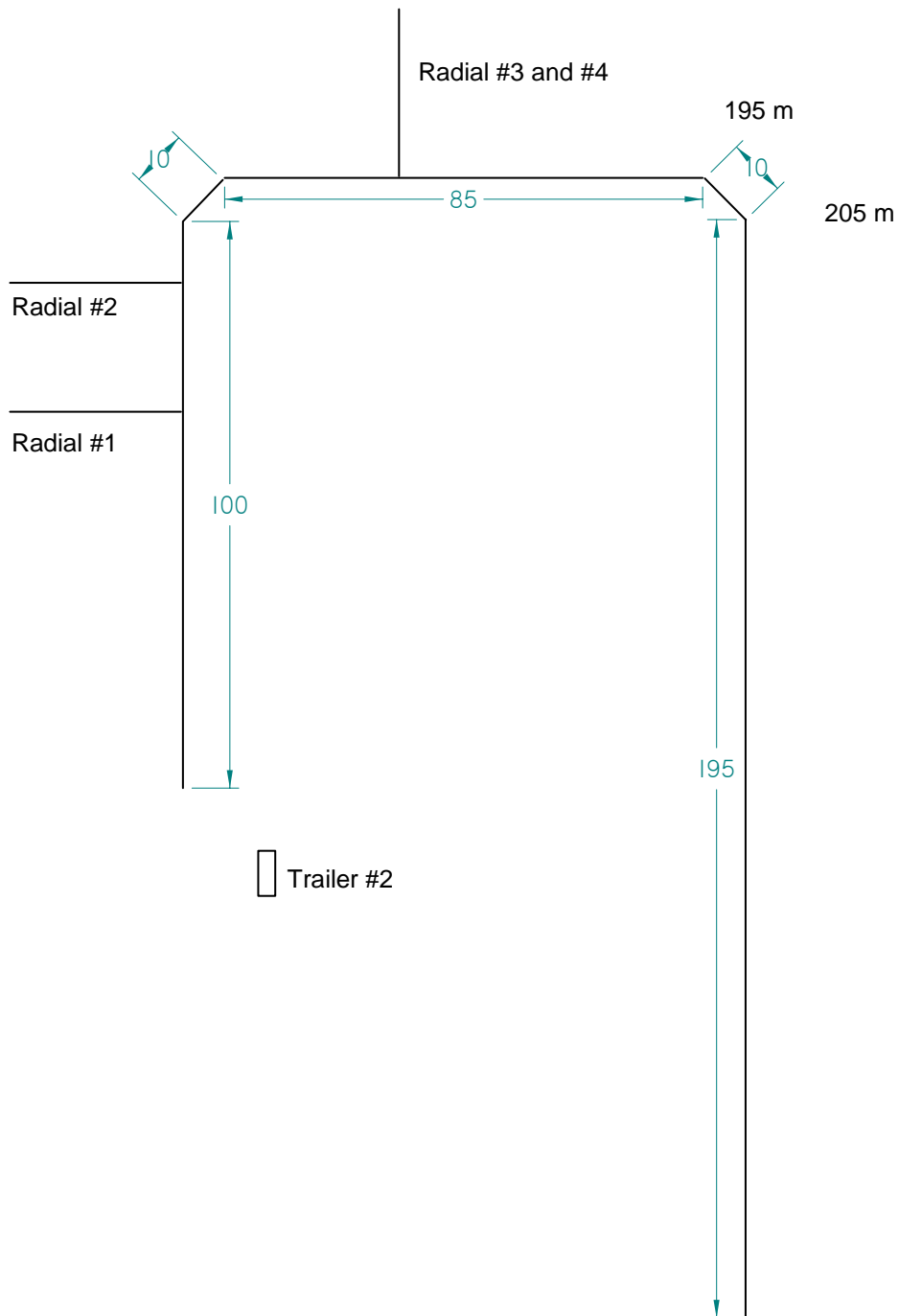


Figure C-6 SITE Cable Location



Figure C-77 SITE - Looking North near Radial 1

3 JWP – 1 May 2006

This site is located at 681 Cram Rd, Beckwith Twp, Ontario. The cables have 25 meters of lead-in and 400 meters of active cable. Cable separation is 1.5 m and burial depth is 23 cm. Both cables are terminated with 50 ohm loads.

Test personnel was John Patchell.



Figure C-8 JWP Satellite Photo and Cable Location

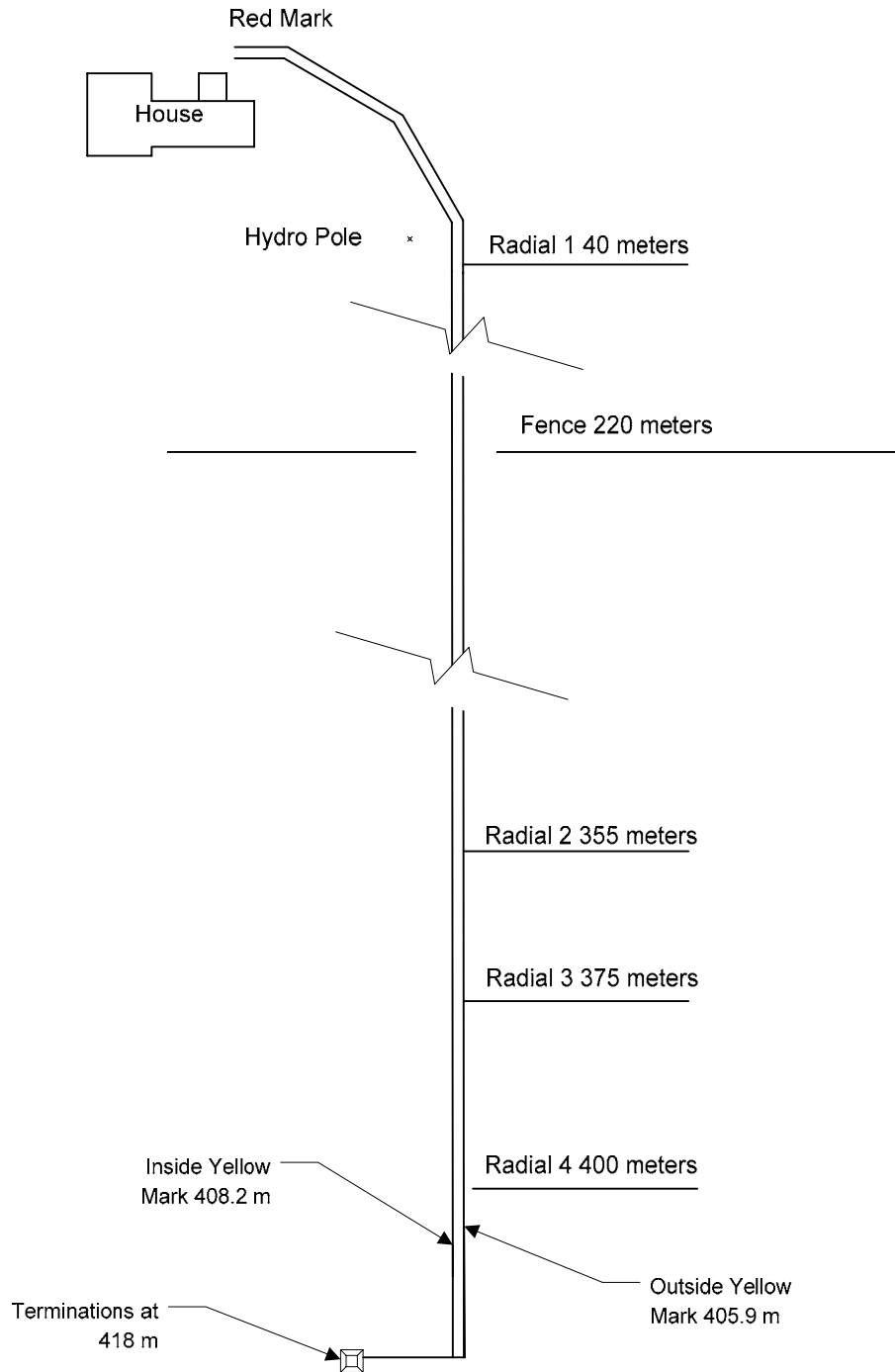


Figure C-9 JWP Cable Layout



Figure C-10 JWP site Looking North near fence line