

1.4 OmniTrax Circuit Card Assembly

The OmniTrax circuit card assembly is an 8.25" x 8.5" x 0.093" 8 layer PCB populated with components on both sides of the circuit card. RF shielding is applied on the top side over the sensitive transmitter and receiver signal chains.

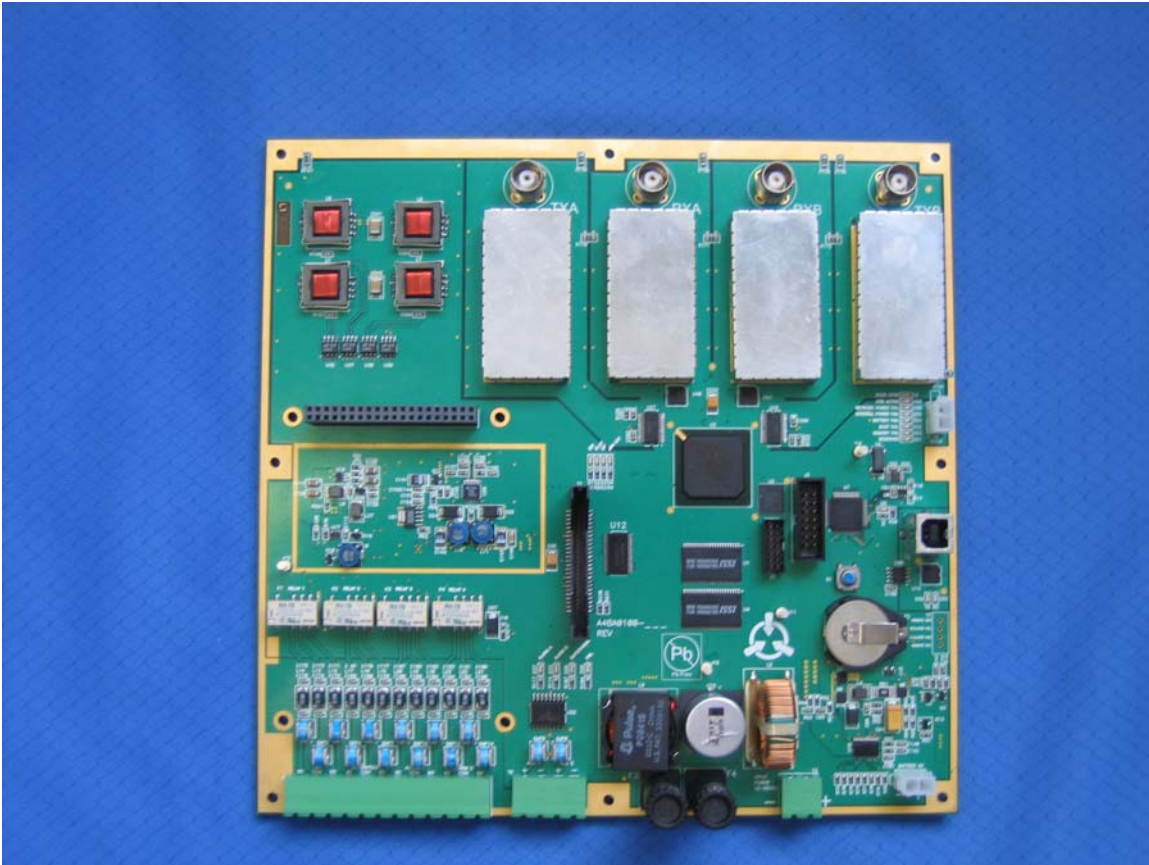


Figure A-4 Omnitrax PCB Top Side With RF Shields

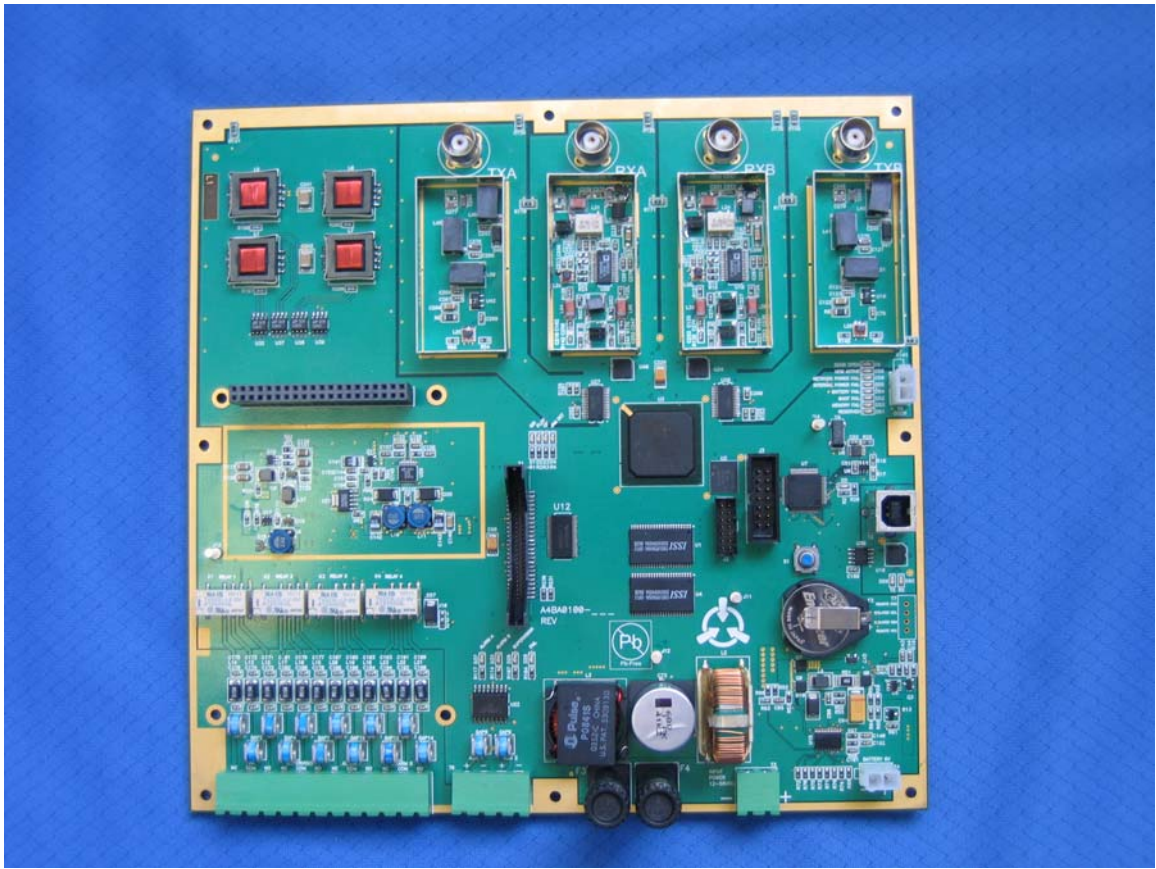


Figure A-5 Omnitrax PCB Top Side With RF Shields Removed

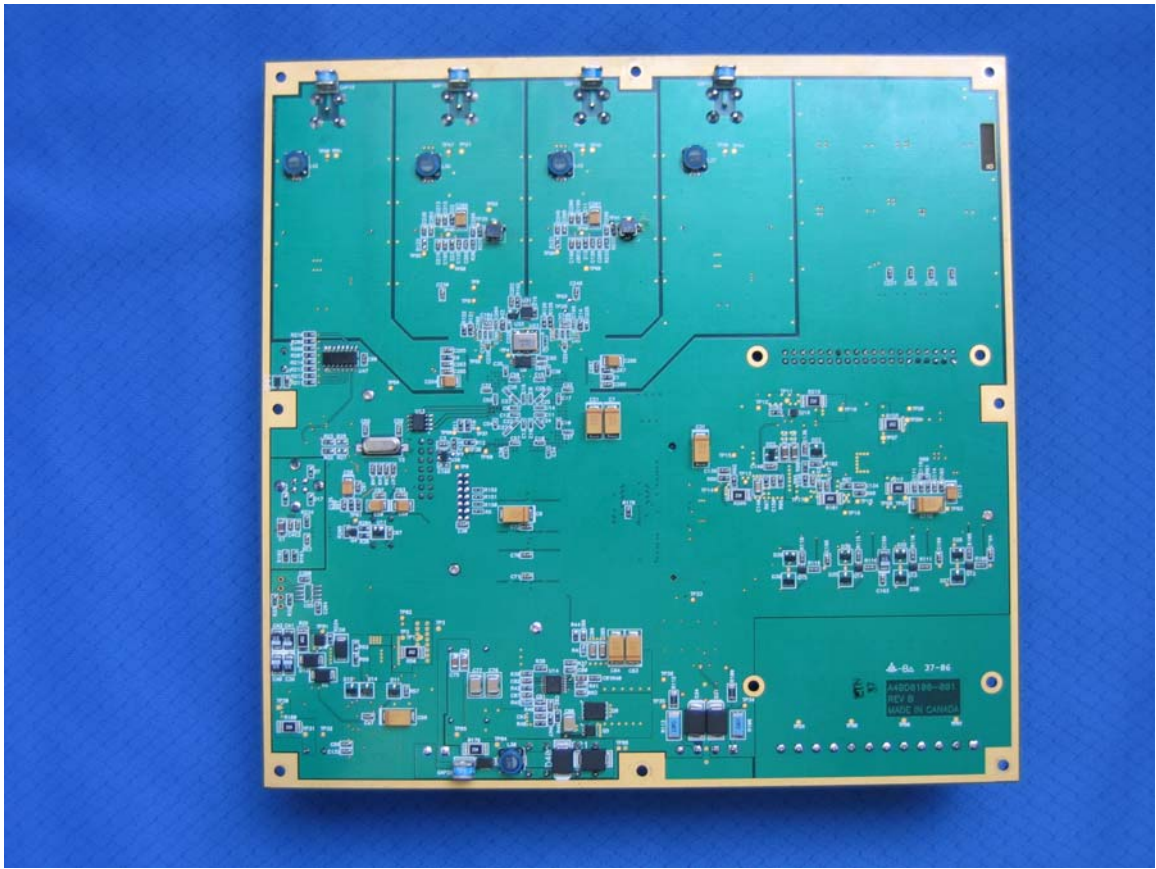


Figure A-6 Omnitrax PCB Bottom Side