

**\*\* USER'S  
MANUAL \*\***

---

FCC ID: I5C 0001

## INTRODUCTION

The PCMCIA SLIM DVD-ROM brings the latest in mobile computing technology to notebook computer users with portability and convenience. The PCMCIA SLIM DVD-ROM is a slim type DVD-ROM drive compliant with the PCMCIA 2.1 standard. Featuring convenient power options, the PCMCIA SLIM DVD-ROM may obtain power directly from the computer through the PCMCIA socket, or can be operated on AC power. The PCMCIA SLIM DVD-ROM is designed for both business and entertainment solutions.

## SYSTEM REQUIREMENTS

1. Notebook or desktop computer with a PCMCIA 2.1 II or III slot.
2. MS-DOS Version 6.0 or higher with MSCDEX.EXE. (for DOS/Windows users only)

## FEATURES

- Complies with PCMCIA 2.1 Standard
- MSCDEX compatible
- Easy-to-install device driver software
- PCMCIA power consumption:  
+5V/300 mA (Standby),  
+5V/800 mA (max.)
- Power source: PCMCIA power direct or AC adapter
- Windows 95 Ready
- OS/2 Warp Ready
- 128 Kbytes Memory Buffer
- Data capacity: CD-ROM  
656MB (Mode 1)  
748MB (Mode 2)  
DVD-ROM  
4.7GB (Single layer)  
8.5GB (Dual layer)
- Motorized front tray loading
- Supports CD-Audio, CD-XA, CD-ROM mode 1 and 2, Multi-session Photo CD, CD-R, DVD, DVD-R

## PART NAMES AND FUNCTIONS

### FRONT PANEL OF THE DVD-ROM DRIVE

**1. Eject button:**

Press this button to eject the DVD.

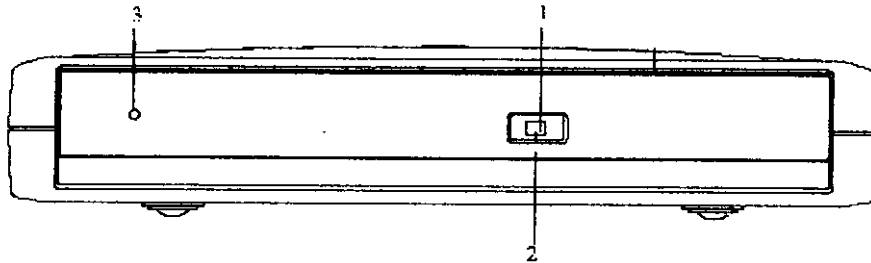
**2. Access LED:**

This LED will blink when the drive is accessing the disc.

- Press this button to load the disc tray.
- When playing an Audio CD, pressing this button will put it into the stop state.

**3. Emergency Hole:**

Insert a pin shaped item to this hole to enable to eject the CD in case the Eject button is accidentally unable to function properly.



## REAR PANEL OF THE DVD-ROM DRIVE

### 1. PC Card Holder:

Hold the PC Card on the top lid of the DVD-ROM drive.

### 2. DC in Jack:

This jack connects to the AC adapter.

### 3. Power Source Switch:

This switch is used to select the power source. When the Switch is set to "PC", then PCMCIA power direct is selected. When it is set to "DC", an AC adapter is select to power the DVD-ROM.

### 4. PCMCIA Interface connector:

Connect DVD-ROM drive to the PCMCIA interface card.

### 5. Line out Jack:

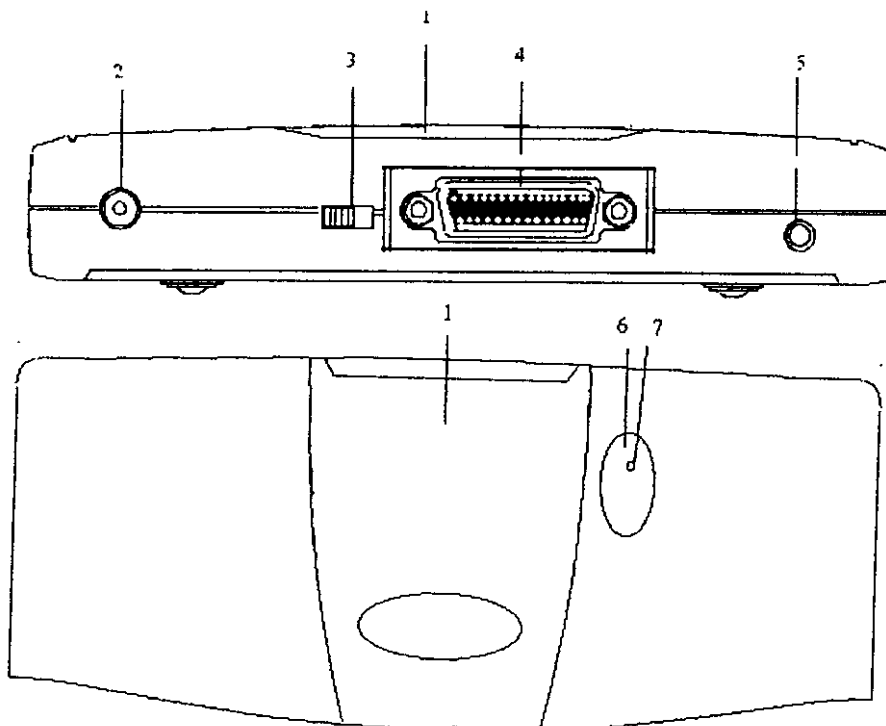
This jack outputs audio signal to an amplifier.

### 6. Power Button:

Press this button will turn the power source of the DVD-ROM drive from PC card slot to the AC/DC power adapter.

### 7. Power LED

This LED will light with a green LED when power is on.



## POWER SOURCE

The PCMCIA SLIM DVD-ROM can be either powered by the AC adapter or obtain the power directly from the computer via the PCMCIA socket.

The POWER LED indicates the power state, it will always light up when the power supply is in the normal condition. The LED will flash if the power is insufficient caused by a malfunctioning AC adapter. In this case, check your AC adapter to see if it is defective or improperly connected.

## CONNECTING THE AC ADAPTER

1. Connect the AC adapter plug to the DC IN jack at the rear panel of the DVD-ROM.
2. Attach the AC adapter to the AC power outlet.

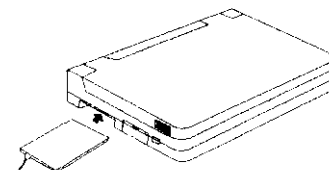
### CAUTION

Use only the AC adapter provided with this unit. Using the incorrect AC adapter will result in permanent and unpredictable damage to the PCMCIA SLIM DVD-ROM.

## HARDWARE INSTALLATION

Before you begin, make sure you turn OFF all power to your system before connecting the PCMCIA SLIM DVD-ROM to your computer.

1. Connect the PCMCIA interface card to the DVD-ROM drive. Press firmly until the DVD-ROM connector is seated, and tighten the two screws on the cable connector.
2. Place the DVD-ROM drive in the horizontal position. The DVD-ROM is designed to operate only in the horizontal position. Operating the DVD-ROM drive in any abnormal position is not recommended.
3. Make sure that the cable of the PCMCIA interface card is firmly connected to the interface connector at the back panel of the DVD-ROM drive.
4. Locate the PCMCIA slot of your computer or consult your computer user manual for its location.
5. Align the PCMCIA interface card with the arrow sign pointing toward the computer's slot. (Please note that the card is keyed to guide for proper insertion.)



**Figure 5**

6. Slowly insert the PCMCIA interface card into the slot and press firmly until the connector is seated.
7. Turn the system ON to install the PCMCIA SLIM DVD-ROM device driver. Please follow the Software Installation procedures.

### CAUTION

You should connect the PCMCIA interface card to DVD-ROM drive first before inserting the PCMCIA interface card into your computer. DO NOT connect/disconnect the DVD-ROM PCMCIA interface card to/from the PCMCIA interface card when the system is in the power-on state.

# **Software Installation**

**for**

## **Model I Interface Card**

**This section is the software installation for Model I interface card user. Check your PCMCIA interface card to see your model letter. If you are using Model C & M, skip this section and refer to “Software Installation for Model C & Model M Interface Card”.**

## SOFTWARE INSTALLATION FOR MODEL I

### SOFTWARE INSTALLATION FOR DOS/WINDOWS (MODEL I)

#### Automatic Installation

The INSTALL program helps you install the device driver into the computer easily. Please follow the instructions below to proceed with automatic installation.

1. Insert the device driver diskette into a floppy disk drive on your computer.
2. Change the working directory to the floppy drive containing the device driver diskette by typing "A:" or "B:" then press ENTER.
3. At the DOS prompt (A:\> or B:\>), type "INSTALL" followed by the ENTER key.
4. Press ENTER or click on the OK button to continue. When the opening screen appears, a dialog box will display the following, 1), the directory to install the device driver; 2), the DOS directory to specify the location of the MSCDEX driver; 3), the I/O port address; 4), the IRQ number. Enter the directory you select to install the driver and press the TAB key to forward to the next field to indicate the DOS Directory. Press the TAB key again to set the I/O port and then the IRQ. The default setting of the I/O ports are (170-177, 376-377), and the default IRQ is 15. After completing the selection, click on the Install button to continue.
5. The rest of the installation should proceed automatically, and the CONFIG.SYS and AUTOEXEC.BAT files on your computer will be updated automatically.
6. Reboot your computer and the DVD-ROM drive will be defined as the next available drive letter. For example, if the last hard drive of the computer is drive C, the DVD-ROM drive will be assigned to be drive D automatically.

#### Manual Installation

You may also manually install the PCMCIA DVD-ROM device driver if the default setting conflicts with your system. Perform the following procedure to complete the manual installation.

1. Copy the files ARICDI.EXE from the PCMCIA DVD-ROM device driver disk to your hard disk.
2. Add "ASTDRIVE=Z" to the TOP of your CONFIG.SYS file. If you already have a LASTDRIVE line with a letter other than Z, change it to Z.
3. Add the following lines to the BOTTOM of your CONFIG.SYS file:



**DEVICE=drive:\path\ARICDI.EXE /P:1 /I:15 /D:MSCD001**

where *drive:\path* specifies the directory containing the file ARICDI.EXE.

*Note: If your CONFIG.SYS file is already loaded with PCMCIA software, such as Cardsoft of SystemSoft or Cardtalk of Databook, it is necessary to add the above line after the PCMCIA software. Otherwise, the PCMCIA interface card will not be initialized properly. To make sure the PCMCIA software has been loaded in your system and to know more about PCMCIA, please refer to the section titled "PCMCIA SOFTWARE INFORMATION ABOUT DOS/WIN 3.1".*

ARICDI.EXE is the device driver for the PCMCIA DVD-ROM. The parameters of ARICDI.EXE are described below:

**/P** is used to set the I/O ports, and the valid numbers are 1, 2, and 3. Each number represents the I/O port pairs of (170-177, 376-377), (1E8-1EF, 3EE-3EF), and (168-16F, 36E-36F) respectively. The default setting is **/P:1**.

**/I** is used to set the IRQ number. The valid IRQs are 3, 4, 5, 7, 9, 10, 11, 12 and 15, and the default setting is **/I:15**.

**/D** is used to set the device name. It can be any name up to 8 characters. This name must be the same as the name specified in the MSCDEX.EXE option **/D: name** in the next step.

4. Add the following line at the TOP of your AUTOEXEC.BAT:

**drive:\path\MSCDEX.EXE /D:MSCD001 /M:4**

where *drive:\path* specifies the DOS directory or the directory containing the file MSCDEX.EXE.

*Note: If your AUTOEXEC.BAT file loads a menu program such as DOSSHELL or Windows, you have to add the above line to start your menu program. Otherwise, MSCDEX will not have a chance to load before your menu program begins.*

The example above shows the default setting. The **/D:** switch indicates the device name. It **MUST** be the same name specified by the **/D:** switch of ARICDI.EXE in your CONFIG.SYS file. The **/M:** switch indicates how much memory to allocate for caching information on the DVD-ROM. The default **/M:4** caches 8KB.

For more information about the switches of MSCDEX, please type "**help MSCDEX**" at the DOS prompt.

5. Now, reboot your computer to activate the DVD-ROM drive.

## SOFTWARE INSTALLATION FOR WINDOWS 95

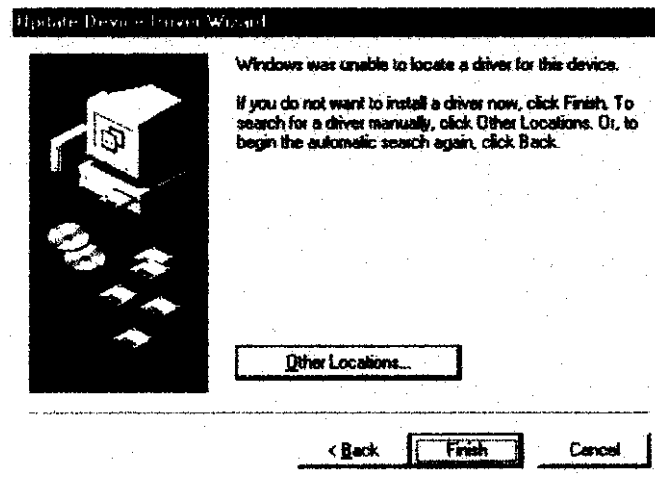
If your computer does not have Windows 95 installed yet, please refer to the section titled "Use the PCMCIA DVD-ROM to Install Windows 95".

### Important Note for Windows 95 installation

If you are inserting the PCMCIA DVD-ROM into your computer for the very first time, and the "Update Device Driver Wizard" dialog box appears as below, it means your Windows 95 is a newer version.

In this case, perform the following steps for installing PCMCIA DVD-ROM for Windows 95. Otherwise, ignore and skip this note.

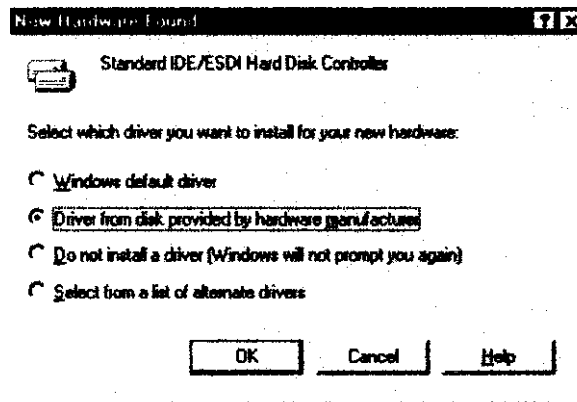
1. Insert the PCMCIA DVD-ROM device driver disk into your floppy drive.
2. Click Next button.
3. Click Other Locations when the below dialog prompts. Specify the location as A:\WIN95 and select OK.



4. Click Finish to continue.
5. When Windows 95 prompt you to insert the diskette again, just specify the directory as A:\WIN95. And all the remaining installation will proceed automatically.

### Using the PCMCIA SLIM DVD-ROM Under Windows 95

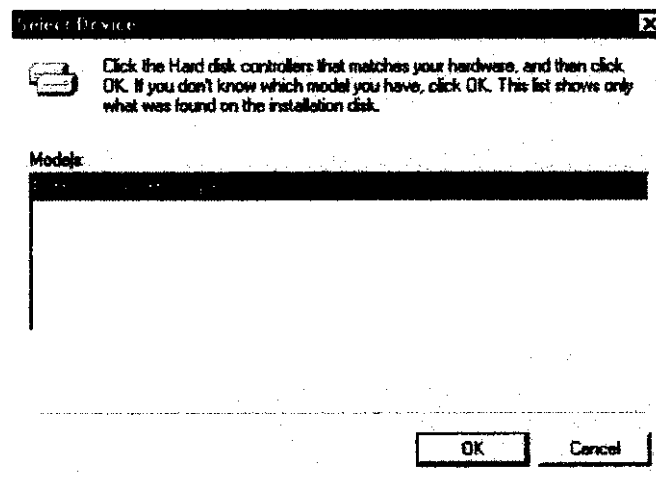
The following dialog box will appear when you are using the PCMCIA CD-ROM under Windows 95 for the very first time.



If the dialog box does not appear and the CD-ROM folder can not be found in My Computer, please refer to the section titled "Enable 32-bit Card Support".

Select "Driver from disk provided by hardware manufacturer" and click the OK button, Windows 95 will then prompt you to insert the manufacturer installation disk. Insert the PCMCIA DVD-ROM device driver disk into your floppy drive. Specify the directory as A:\WIN95 (or B:\WIN95 whichever contains the diskette) and select OK.

When the following dialog box appears, select PCMCIA DVD-ROM (I) card and click on the OK button.



Follow the on-screen instructions to continue. After finishing, remember to shutdown Windows and restart your computer if you are using the PCMCIA CD-ROM to install Windows 95.

Note that it is not necessary to connect the PCMCIA DVD-ROM every time you reboot your computer; connect it only when you need to use it.

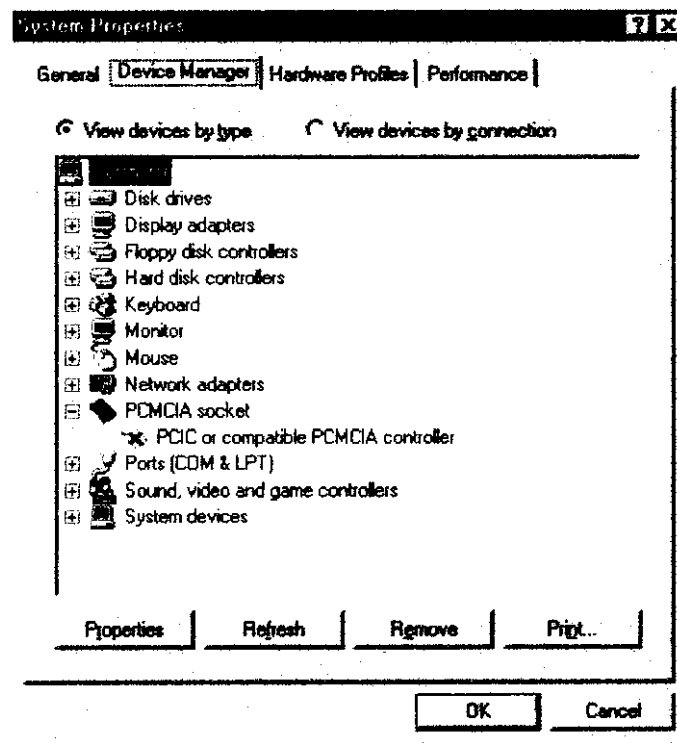
#### **Using the PCMCIA CD-ROM to Install Windows 95**

You may also use the PCMCIA CD-ROM to upgrade your operating system from DOS/Window to Windows 95. Before you do this, the PCMCIA CD-ROM DOS device driver should be properly installed first. Please refer to the section titled "SOFTWARE INSTALLATION FOR DOS/WINDOWS". Then, perform the following steps to install Windows 95.

1. Start Windows 3.1.
2. Insert the Windows 95 CD into the PCMCIA CD-ROM.
3. Run File Manager and select the PCMCIA CD-ROM drive.
4. Find and double-click the file SETUP.EXE.
5. Follow the on-screen instructions to complete the installation of Windows 95.
6. After the installation is completed, please refer to the next section titled "Enable 32-bit Card Support".

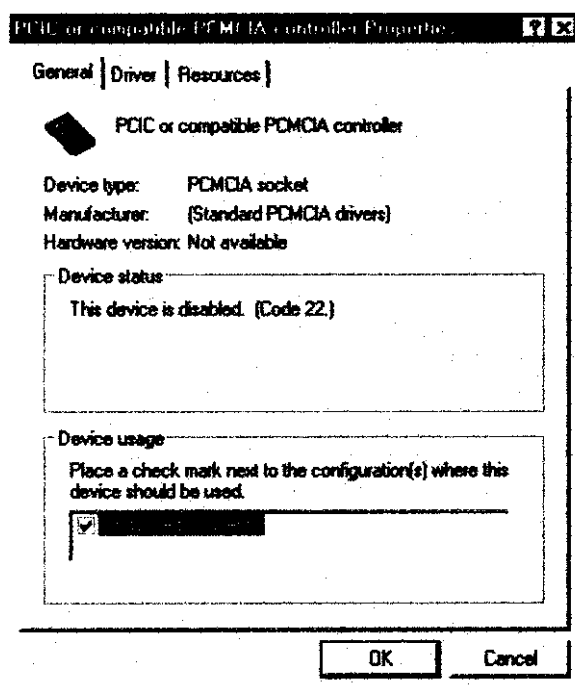
### Enabling 32-bit Card Support

Your system should be ready for PCMCIA socket support prior to operating the PCMCIA DVD-ROM. To check whether your computer has PCMCIA Socket supported, first, double-click on the "System" icon from the "Control Panel" folder (you can select the "Control Panel" under "Settings" from the "Start" menu to open the "Control Panel" folder).



Click on the Device Manager Tab. If "PCMCIA Socket" is found with a cross (x) sign next to the PCMCIA Controller as the above figure shows, it means the PCMCIA device driver is not using 32-bit Card Support.

Double-click on the PCMCIA Controller, and a dialog box will be displayed as below. Place a check mark next to the current configuration of Device usage box, then select OK.



After the PCMCIA 32-bit Card Support is installed, Windows will ask you to reboot your computer. Then you should refer to the first section titled "Use CD-ROM Under Windows 95" to configure the PCMCIA DVD-ROM.

If the PCMCIA Socket is not found, then you must add a PCMCIA socket to your system. Please click on the "Add New Hardware" icon in the Control Panel folder and select "PCMCIA socket". Select the appropriate type of PCMCIA Controller that matches with yours and follow the on-screen instructions.

### **SOFTWARE INSTALLATION FOR OS/2 WARP (MODEL I)**

Before installing the PCMCIA DVD-ROM device driver for OS/2 WARP, make sure your computer is PCMCIA supported. If you are not sure about this, please refer to the last part of this section for "Add PCMCIA Support".

### **Automatic Installation**

To perform the automatic installation of the PCMCIA DVD-ROM for OS/2 WARP, follow the steps below,

1. Insert the device driver disk into a floppy disk drive on your computer.
2. Open OS/2 WARP.
3. Open Drives.
4. Select Drive A or B depending on which floppy drive contains the device driver diskette.
5. Open the "OS/2 WARP".
6. Double-click on "INSTALL2.EXE".

dialog box will be displayed for you to specify the OS/2 directory, the I/O address for the PCMCIA DVD-ROM and the IRQ number. After specifying the OS/2 directory, press TAB to set the I/O port and then the IRQ. The default setting of the I/O ports are (170-177, 376-377), and the default IRQ is 15. After completing the selection, choose the Install button to continue

8. The rest of the installation will proceed automatically. At last, the on-screen instruction will prompt your to restart your computer to activate the new device driver for OS/2 Warp.

### **Manual Installation**

You may also manually install the PCMCIA DVD-ROM OS/2 device driver if the default setting conflicts with your system. Perform the following procedure to complete the manual installation.

1. Copy the ARICD2.FLT file from A:\OS2WARP to the BOOT subdirectory of the OS/2 directory (for example: C:\OS2\BOOT.)
2. Add the following line to the BOTTOM of your CONFIG.SYS file:

```
BASEDEV=ARICD2.FLT /P:1 /I:15
```

The parameters of ARICD2.FLT are described below:

- /P is used to set the I/O ports, and the valid numbers are 1, 2, and 3. Each number represents the I/O ports group of (170-177, 376-377), (1E8-1EF, 3EE-3EF), and (168-16F, 36E-36F) respectively. The default setting is /P:1.
- /I is used to set the IRQ number, the valid IRQs are 3, 4, 5, 7, 9, 10, 11, 12 and 15, and the default setting is /I:15.
- /V verbose mode, displays the initialization message. The default is quiet mode.

Meanwhile, check if the following lines exist in CONFIG.SYS, if not, add the following lines:

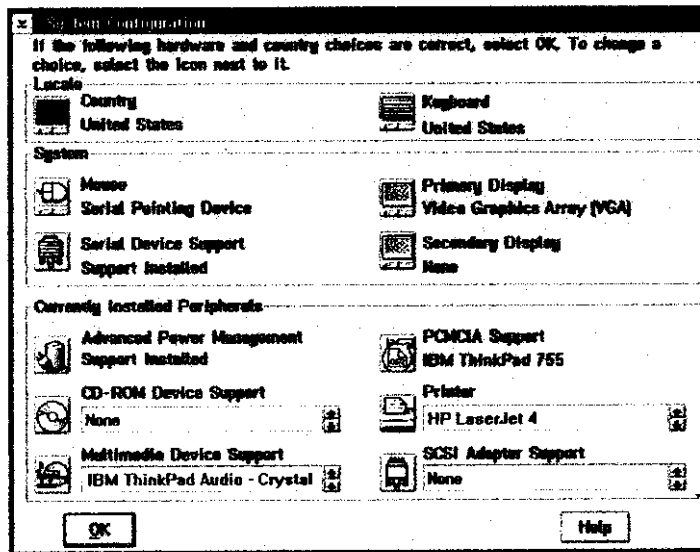
```
DEVICE=C:\OS2\BOOT\OS2CDROM.DMD /Q
IFS=C:\OS2\BOOT\CDFS.IFS /Q
DEVICE=C:\OS2\MDOS\VCDROM.SYS
```

### Adding PCMCIA Support

PCMCIA Support can be automatically installed during OS/2 installation or it can be installed through Selective Install after OS/2 installation.

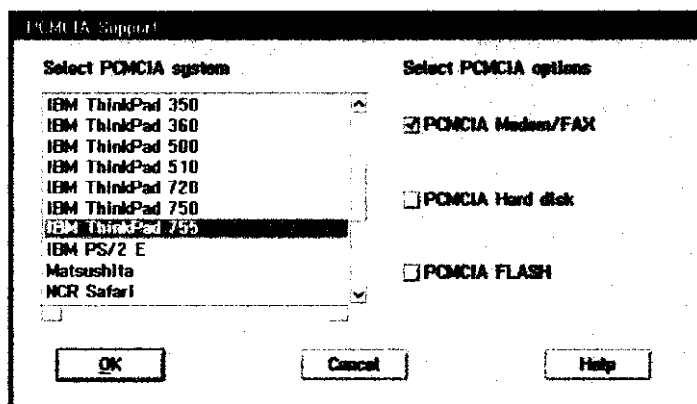
To check or install PCMCIA support, perform the following steps:

1. Open OS/2 System.
2. Open System Setup.
3. Open Selective Install.
4. Check if PCMCIA Support has been installed in the System Configuration window, if yes, you may exit now, otherwise, perform the following steps to continue.



5. Select the check box to the left of PCMCIA Support to display the Select PCMCIA system window.
6. Select the appropriate system (this should either be a direct match with your target install system or a known compatible system).





7. Select OK.
8. Select Install.
9. Follow the on-screen instructions to finish the installation.

## **TROUBLE SHOOTING (MODEL I)**

This section explains the most common error messages that DOS/Windows users may encounter.

After rebooting your computer, the following messages will be displayed on your screen, which are generated by ARICDI.EXE and MSCDEX.EXE.

Configure card to:

I/O Port:170-177, 376-377

IRQ number: 15

Device Name: MSCD001

PCMCIA CD-ROM card is present in socket 1

.  
.  
.

Drive D: = Driver MSCD001 unit 0

If any errors occur or the PCMCIA DVD-ROM does not work, you should reboot your computer again. When the system displays 'Starting MS-DOS...', press the F8 key to execute CONFIG.SYS and AUTOEXEC.BAT step by step. You can consistently press the `<F8>` key to see each command message.

#### **Error messages generated by ARICDLEXE:**

- ❖ **Error: PCMCIA CD-ROM card is not present!**

If the above message appears, it means ARICDI can't find any PCMCIA DVD-ROM card in your PCMCIA slots. Make sure the card is inserted firmly.

- ❖ **Error: Illegal arguments!**  
For help, type "aricdi /?".

The above error message means that there are invalid arguments in the ARICDI line of CONFIG.SYS. Please refer to the section titled "Manual Installation" for the usage of ARICDI.EXE.

- ❖ **Error: I/O port and IRQ number must be specified!**

The above message means you have not specified the I/O port and IRQ number argument in the ARICDI line of CONFIG.SYS.

- ❖ **Error: Illegal I/O port!**

The above message means invalid I/O ports in the ARICDI line of CONFIG.SYS have been selected. Legal I/O port numbers are: 1, 2, and 3.

- ❖ **Error: Illegal IRQ number!**

The above message means an invalid IRQ number in the ARICDI line of CONFIG.SYS has been selected. The legal IRQ numbers are 3, 4, 5, 7, 9, 10, 11, 12 and 15.

- ❖ **Error: There is no available 4K memory for mapping!**

The above message means ARICDI can't find available 4K memory between C000:0 to EFFF:0. This error can be corrected by changing the EMM386 line of CONFIG.SYS to exclude at least 4K memory for mapping. For example,

```
DEVICE=C:\DOS\EMM386.EXE ... X=D000-D3FF
```

- ❖ **Error: The INTEL 82365SL PCMCIA controller is not detected in your system. You should contact your dealer to get PCMCIA support software.**

The above message means the PCMCIA controller for your system is not INTEL 82365SL compatible. In this case, you should install PCMCIA support software which should be supplied by the notebook manufacturer.

- ❖ **CD-ROM Drive is not found!**

The above message means ARICDI.EXE can't find the PCMCIA CD-ROM drive. Please make sure the DVD-ROM drive is properly connected to the PCMCIA interface card cable.

**Error message generated by MSCDEX.EXE:**

❖ Device driver not found: 'MSCD001'

This means that ARICDI.EXE is not installed properly or you have entered a different /D: switch in the MSCDEX line of AUTOEXEC.BAT. The /D: switch must be the same as the /D: switch in the ARICDI.EXE line of CONFIG.SYS.

If the error message displayed is none of the above, please contact your dealer to obtain customer support.

# **Software Installation**

**for**

## **Model C & Model M Interface Card**

This section is the software installation for Model C & M interface card user. Check your PCMCIA interface card to see its model letter. If you are using Model I, skip this section and refer to “Software Installation for Model I Interface Card”.

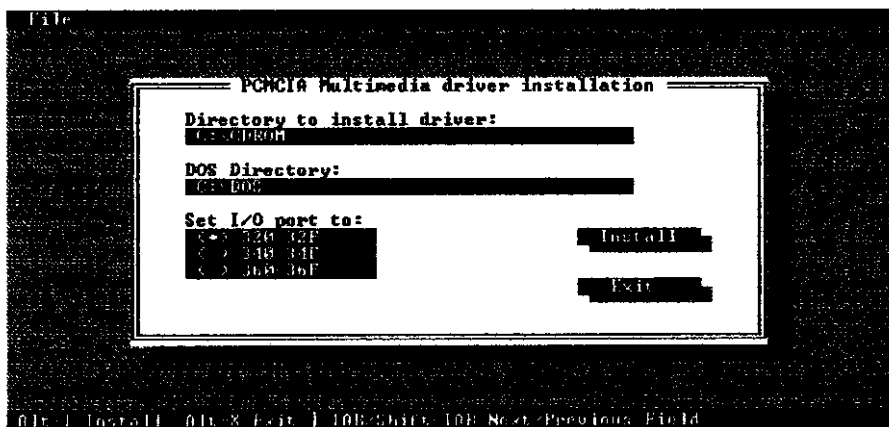
## SOFTWARE INSTALLATION FOR MODEL C & M

### SOFTWARE INSTALLATION FOR DOS/WINDOWS (MODEL C & M)

#### Automatic Installation

The INSTALL program will help you to install the device driver for DOS/Windows 3.1 (or 3.11) with ease. Please follow the instructions below to proceed with automatic installation. For device driver installation in Windows 95 environment, please skip to next section for details.

1. Insert the device driver diskette into a floppy disk drive on your computer.
2. Change the working directory to the floppy drive containing the device driver diskette by typing "A:" or "B:", then press ENTER.
3. At the DOS prompt ("A:" or "B:" ), type "INSTALL" followed by the ENTER key.
4. Press ENTER or click on the OK button to continue when the opening screen appears.
5. The dialog box below will display the following 1) the directory to install the device driver; 2) the DOS directory; 3) the I/O port for the PCMCIA CD-ROM. Enter the directory you select to install the driver and press the TAB key to forward to the next field to indicate the DOS Directory. Press the TAB key again to set the I/O port. The default settings of the I/O port are 320-32F. After completing the selection, click on the Install button to continue.



6. The rest of the installation should proceed automatically, and the CONFIG.SYS and AUTOEXEC.BAT files on your computer will be updated automatically.
7. Reboot your computer and the DVD-ROM drive will be defined as the next available drive letter. For example, if the last hard drive of the computer is drive C, the DVD-ROM drive will be assigned to be drive D automatically.

### Manual Installation

You may also manually install the PCMCIA DVD-ROM device driver by performing the following procedure.

1. Copy the files ARICDM.EXE from the device driver disk to your hard disk.
2. Add "ASTDRIVE=Z" to the TOP of your CONFIG.SYS file. If you already have a LASTDRIVE line with a letter other than Z, change it to Z.
3. Add the following lines to the BOTTOM of your CONFIG.SYS file:

```
DEVICE=drive:\path\ARICDM.EXE /P:320 /D:MSCD001
```

where *drive:\path* specifies the directory containing the file ARICDM.EXE.

*Note: If your CONFIG.SYS file is already loaded with PCMCIA software, such as Cardsoft of SystemSoft or Cardtalk of Databook, it is necessary to add the above line AFTER the PCMCIA software. Otherwise, the PCMCIA interface card will not be initialized properly. To check if any PCMCIA software has been loaded in your system and to know more about PCMCIA, please refer to the section titled "PCMCIA SOFTWARE INFORMATION FOR DOS/WIN 3.1".*

ARICDM.EXE is the device driver for the PCMCIA DVD-ROM. The parameters of ARICDM.EXE are described as below:

/P is used to set the I/O ports. If you select to use the CD-ROM only, the valid ports are 320, 340 and 360, and the default setting is /P:320.

/D is used to set the device name of the CD-ROM. It can be any name up to 8 characters. This name must be the same as specified in the MSCDEX.EXE option /D: *name* in the next step.

4. Add the following line at the TOP of your AUTOEXEC.BAT:

```
drive:\path\MSCDEX.EXE /D:MSCD001 /M:4
```

where *drive:\path* specifies the DOS directory or the directory containing the file MSCDEX.EXE.

*Note: If your AUTOEXEC.BAT file loads a menu program such as DOSSHELL or Windows, you have to add the above line to start your menu program. Otherwise, MSCDEX will not have a chance to load before your menu program begins.*

The example above shows the default setting. The /D: switch indicates the device name. It MUST be the same name as specified in the /D: switch of ARICDM.EXE in your CONFIG.SYS file. The /M: switch indicates how much memory to allocate for caching information on the CD-ROM. The default /M: 4 caches 8KB.

For more information about the switches of MSCDEX, please type "help MSCDEX" at the DOS prompt.

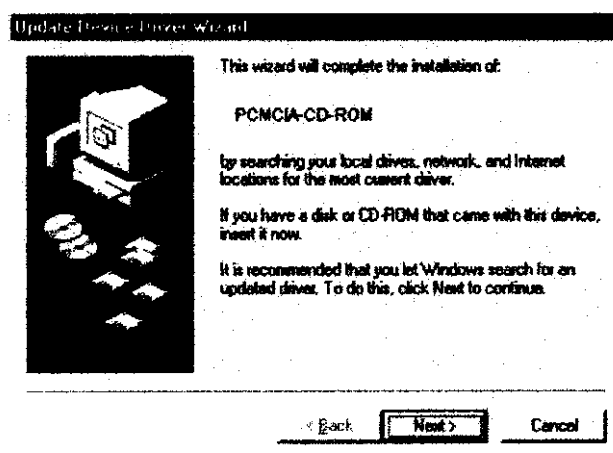
5. Now, reboot your computer to activate the PCMCIA DVD-ROM.

## **SOFTWARE INSTALLATION FOR WINDOWS 95 (MODEL C & M)**

If your computer does not have Windows 95 installed yet, please go to the section titled "Use PCMCIA CD-ROM to Install Windows 95" before proceeding the following instruction.

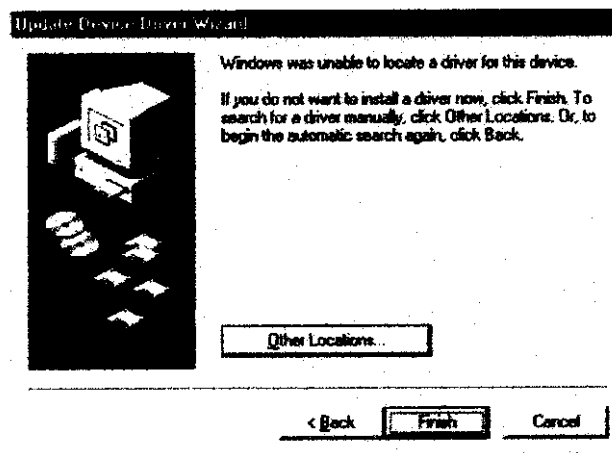
### **Important Note for Windows 95 installation**

If you are inserting the PCMCIA DVD-ROM into your computer for the very first time, and the "Update Device Driver Wizard" dialog box appears as below, it means your Windows 95 is a newer version.



In this case, perform the following steps for installing PCMCIA DVD-ROM for Windows 95. Otherwise, ignore and skip this note.

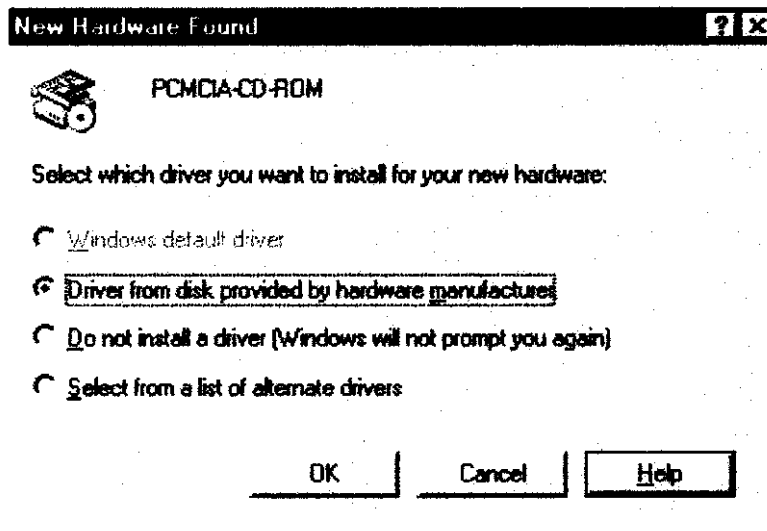
1. Insert the PCMCIA DVD-ROM device driver disk into your floppy drive.
2. Click Next button.



3. Click Other Locations when the below dialog prompts. Specify the location as A:\WIN95 and select OK.
4. Click Finish to continue.
5. When Windows 95 prompt you to insert the diskette again, just specify the directory as A:\WIN95. And all the remaining installation will proceed automatically.



### Using the PCMCIA CD-ROM Under Windows 95

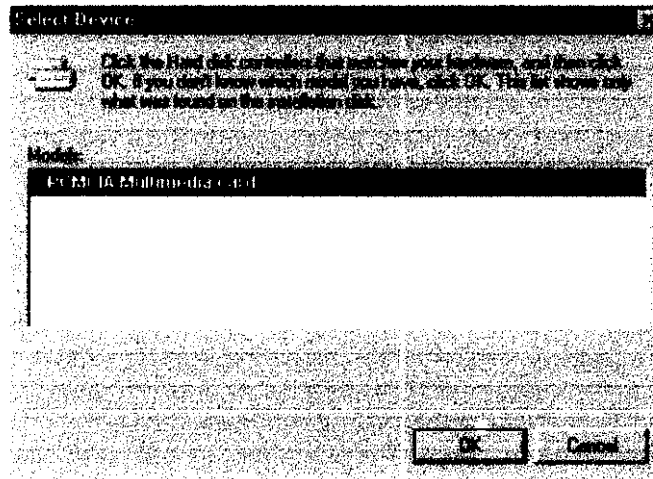


The following dialog box will appear when you are using the PCMCIA CD-ROM under Windows 95 for the very first time.

If the dialog box does not appear and the CD-ROM folder can not be found in My Computer, please refer to the section titled "Enable 32-bit Card Support".

Select "Driver from disk provided by hardware manufacturer" and click the OK button. Windows 95 will then prompt you to insert the manufacturer installation disk. Insert the PCMCIA DVD-ROM device driver disk into your floppy drive. Specify the directory as A:\WIN95 (or B:\WIN95 whichever contains the diskette) and select OK.

When the following dialog box appears, select the PCMCIA Multimedia card and click the OK button. Follow the on-screen instructions to continue. After finishing, remember to shutdown Windows and restart your computer if you are using the PCMCIA CD-ROM to install Windows 95.



Note that it is not necessary to connect PCMCIA DVD-ROM every time you reboot your computer; connect it only when you need to use it.

#### **Using The PCMCIA CD-ROM to Install Windows 95**

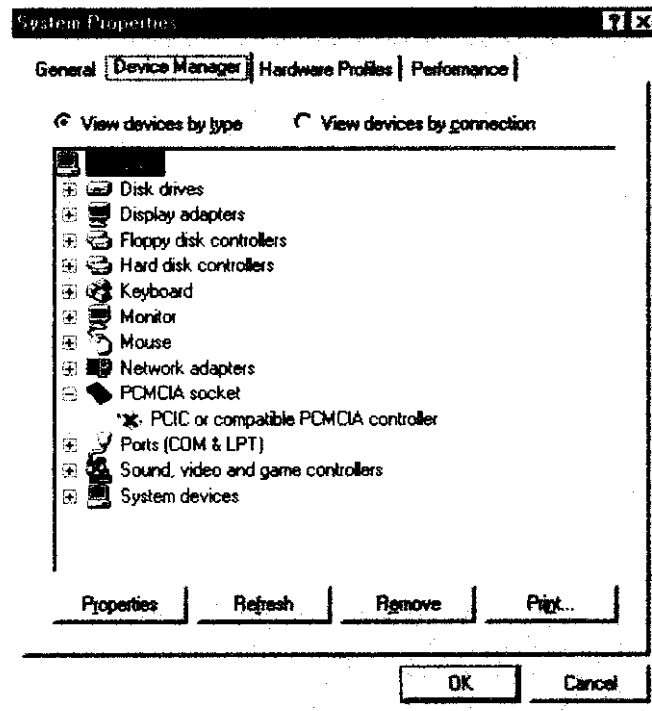
You may also use PCMCIA CD-ROM to upgrade your operating system from DOS/Window to Windows 95. If you are about to do this, the PCMCIA CD-ROM DOS device driver should be properly installed first. Please refer to the section titled "SOFTWARE INSTALLATION FOR DOS/WINDOWS". Then, perform the following steps to install Windows 95.

1. Start Windows 3.1 (or 3.11).
2. Insert the Windows 95 CD into the CD-ROM drive.
3. Run File Manager and select the CD-ROM drive.
4. Find and double click the file SETUP.EXE.
5. Follow the on-screen instructions to complete the installation of Windows 95.
6. After the installation is completed, please refer to the next section titled "Enable 32-bit Card Support".

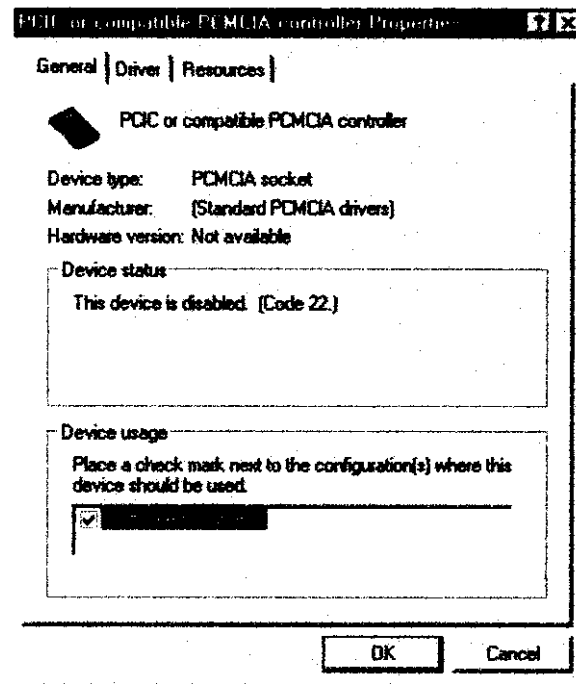
#### **Enable 32-bit Card Support**

Your system should be ready for PCMCIA socket support prior to operating the PCMCIA DVD-ROM. To check whether your computer is PCMCIA Socket supported, first, double-click on the "System" icon from "Control Panel" folder (you can select the "Control Panel" under "Settings" from the "Start" menu to open the "Control Panel" folder).

Click on the Device Manager Tab. If “PCMCIA Socket” is found with a cross (x) sign next to the PCMCIA Controller as the following figure shows, it means the PCMCIA device driver is not using 32-bit Card Support.



In this case, double click on the PCMCIA Controller, and a dialog box will be displayed as below. Place a check mark next to the current configuration of the Device usage box, then select OK.



After the PCMCIA 32-bit Card Support is installed, Windows will ask you to reboot your computer. Then you should refer to the first section titled "Use PCMCIA CD-ROM Under Windows 95" to configure the PCMCIA DVD-ROM.

If the PCMCIA Socket is not found, then you must add a PCMCIA socket to your system. Please click on the "Add New Hardware" icon in the Control Panel folder and select "PCMCIA socket". Select the appropriate type of PCMCIA Controller that matches with yours and follow the on-screen instructions.

## **SOFTWARE INSTALLATION FOR OS/2 WARP (MODEL C & M)**

Before installing the PCMCIA CD-ROM device driver for OS/2 WARP, make sure your computer is PCMCIA supported. If you are not sure about this, please refer to the last part of this section for "Add PCMCIA Support".

### **Automatic Installation**

To perform the automatic installation of PCMCIA DVD-ROM for OS/2 WARP, follow the steps below,

1. Insert the device driver disk into a floppy disk drive on your computer.
2. Open OS/2 System.
3. Open Drives.
4. Select Drive A or B depending on which floppy drive contains the device driver diskette.
5. Open "OS/2 WARP" folder.
6. Double-click on "INSTALL2.EXE".
7. A dialog box will be displayed for you to specify the OS/2 directory, the I/O address for the PCMCIA DVD-ROM and the IRQ number. After specifying the OS/2 directory, press TAB to set the I/O port and then the IRQ. The default setting of the I/O ports are 320-32F, and the default IRQ is 11. After completing the selection, choose the Install button to continue.
8. The rest of the installation will proceed automatically. At last, the on-screen instruction will prompt your to restart your computer to activate the new device driver for OS/2 Warp.

### **Manual Installation**

You may also manually install the PCMCIA DVD-ROM OS/2 device driver if the default setting conflicts with your system. Perform the following procedure to complete the manual installation.

1. Copy the ARICDM2.FLT file from A:\OS2WARP to the BOOT subdirectory of the OS/2 directory (for example: C:\OS2\BOOT.)
2. Add the following line to the BOTTOM of your CONFIG.SYS file:

```
BASEDEV=ARICDM2.FLT /P:320 /I:11
```

The parameters of ARICDM2.FLT are described as below:

/P is used to set the I/O ports. The valid ports are 320, 340, and 360, and the default setting is /P:320.

**/I** is used to set the IRQ number, the valid IRQs are 3, 4, 5, 7, 9, 10, 11, 12 and 15, and the default setting is **/I:11**.

**/V** verbose mode, displays the initialization message. The default is quiet mode.

Meanwhile, check if the following lines exist in CONFIG.SYS, if not, add the following lines:

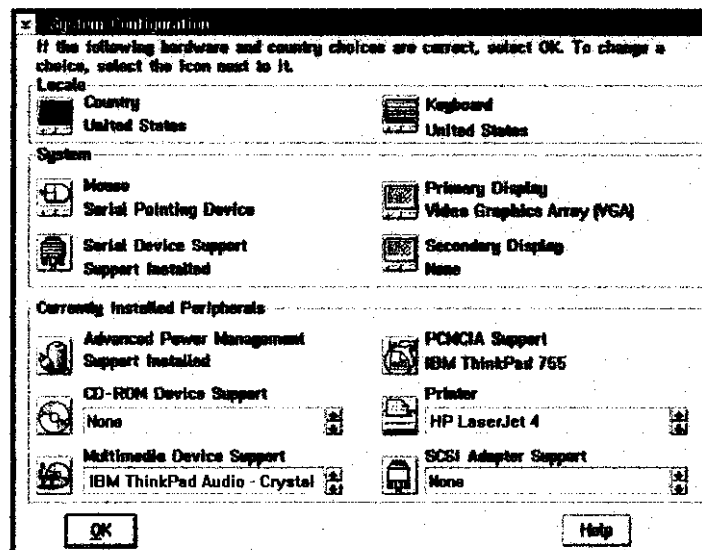
```
DEVICE=C:\OS2\BOOT\OS2CDROM.DMD /Q
IFS=C:\OS2\BOOT\CDFS.IFS /Q
DEVICE=C:\OS2\MDOS\VCDROM.SYS
```

### Adding PCMCIA Support

PCMCIA Support can be automatically installed during OS/2 installation or it can be installed through Selective Install after OS/2 installation.

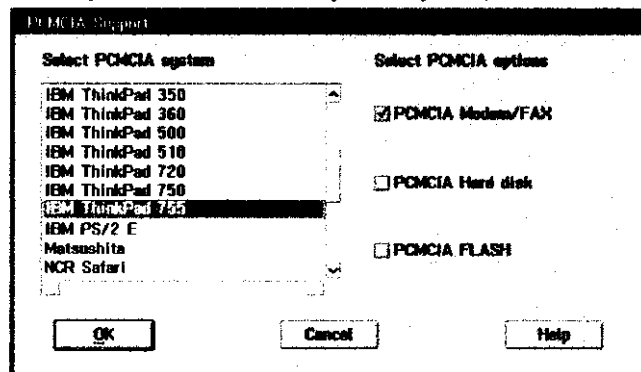
To check or install PCMCIA support, perform the following steps:

1. Open OS/2 System.
2. Open System Setup.
3. Open Selective Install.



4. Check if PCMCIA Support has been installed as the System Configuration window displayed, if yes, you may exit now, otherwise, perform the following steps to continue.

5. Select the check box to the left of PCMCIA Support to display the Select PCMCIA system window.
6. Select the appropriate system (this should either be a direct match with your target install system or a known compatible system).



7. Select OK.
8. Select Install.
9. Follow the on-screen instructions to carry through the installation.

### TROUBLE SHOOTING (MODEL C & M)

This section explains the most common error messages that DOS/Windows users may experience.

After rebooting your computer, the following messages will be displayed on your screen, which are generated by ARICDM.EXE and MSCDEX.EXE.

Configure card to:

CD-ROM I/O Port:320-32F

CD-ROM Device Name: MSCD001

PCMCIA Multimedia card is present in socket 1

·  
·  
·

Drive D: = Driver MSCD001 unit 0

If any errors occur or the DVD-ROM does not work, you should reboot your computer again. When the system displays 'Starting MS-DOS...', press the F8

key to execute the CONFIG.SYS and AUTOEXEC.BAT step by step, so you can consistently press    ' to see each command    message.

**Error Messages Generated by ARICDM.EXE:**

❖ **Error: PCMCIA Multimedia card is not present!**

If the above message appears, it means ARICDM can't find any PCMCIA DVD-ROM card in your PCMCIA slots. Make sure the card is inserted firmly.

❖ **Error: Illegal arguments!**

The above error message means that there are invalid arguments in the ARICDM line of CONFIG.SYS. Please refer to the section titled "Manual Installation" for the usage of ARICDM.EXE.

❖ **Error: I/O port must be specified!**

The above message means you have not specified the I/O port argument in the ARICDM line of CONFIG.SYS.



❖ **Error: Illegal I/O port!**

The above message means invalid I/O ports in the ARICDM line of CONFIG.SYS have been selected. For using DVD-ROM only, legal I/O port numbers are: 320, 340 and 360.

❖ **Error: There is no available 4K memory for mapping!**

The above message means ARICDM can't find available 4K memory between C000:0 to EFFF:0. This error can be corrected by changing the EMM386 line of CONFIG.SYS to exclude at least 4K memory for mapping. For example,

`DEVICE=C:\DOS\EMM386.EXE ... X=D000-D3FF`

❖ **Error: The INTEL 82365SL PCMCIA controller is not detected in your system. You should contact your dealer to get PCMCIA support software.**

The above message means the PCMCIA controller for your system is not INTEL 82365SL compatible. In this case, you should install PCMCIA support software supplied by the notebook manufacturer.

❖ **CD-ROM Drive is not found!**

The above message means ARICDM.EXE can't find the DVD-ROM drive. Please make sure the DVD-ROM drive is properly connected to the PCMCIA interface card cable.

**Error Message Generated by MSCDEX.EXE:**

❖ **Device driver not found: 'MSCD001'**

This means that ARICDM.EXE is not installed properly or you have entered a different /D: switch in the MSCDEX line of AUTOEXEC.BAT. The /D: switch must be the same as the /D: switch in the ARICDM.EXE line of CONFIG.SYS.

If the error message displayed is none of the above, please contact your dealer to obtain customer support.

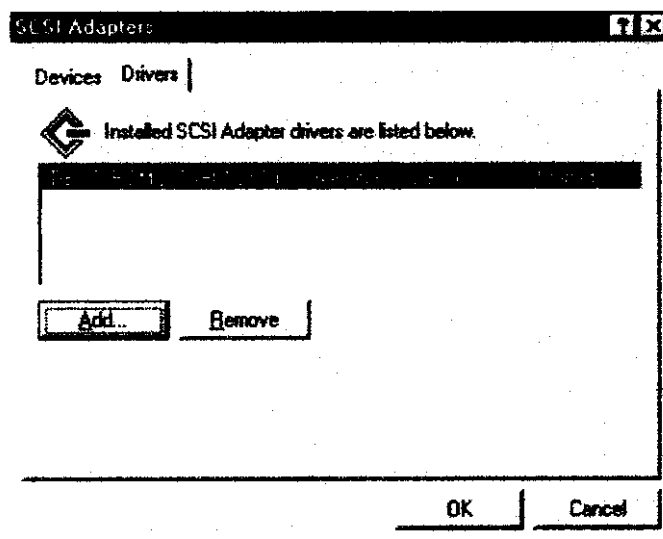
## SOFTWARE INSTALLATION FOR WINDOWS NT

### Before You Begin

- ◆ Be sure the Windows NT you are to install is version 3.51 or higher.
- ◆ Since Windows NT does not support “Hot Insert/Remove” feature, the PCMCIA DVD-ROM should be connected with your computer prior to starting Windows NT. Likewise, do not remove the PCMCIA DVD-ROM before you shut down the Windows NT.
- ◆ In Windows NT, the I/O and IRQ settings of PCMCIA DVD-ROM can not be changed. Therefore, if the settings conflicts with other device you are using, change the I/O or IRQ of other device to avoid conflicts.

### Using the PCMCIA CD-ROM Under Windows NT

To install the PCMCIA DVD-ROM device driver, double click the “SCSI Adapter” icon from “Control Panel” folder. (In Windows NT 4.0, you may select “Control Panel” under “Settings” from the “Start” menu to open the “Control Panel” folder.)



Click the “Drivers” tab, and a figure illustrated as below will be

displayed.

Click "Add" button, and click "Have Disk..." button. Windows NT will then prompt you to insert the manufacturer installation disk. Insert the PCMCIA device driver disk into your floppy drive. Specify the directory as A:\WINNT (or B:\WINNT whichever contains the diskette) and select OK. When the following dialog box appears, select the PCMCIA CD-ROM and click the OK button. Follow the on-screen instruction to continue. After finishing, Windows NT will prompt you to restart to activate the new device driver for Windows NT.

