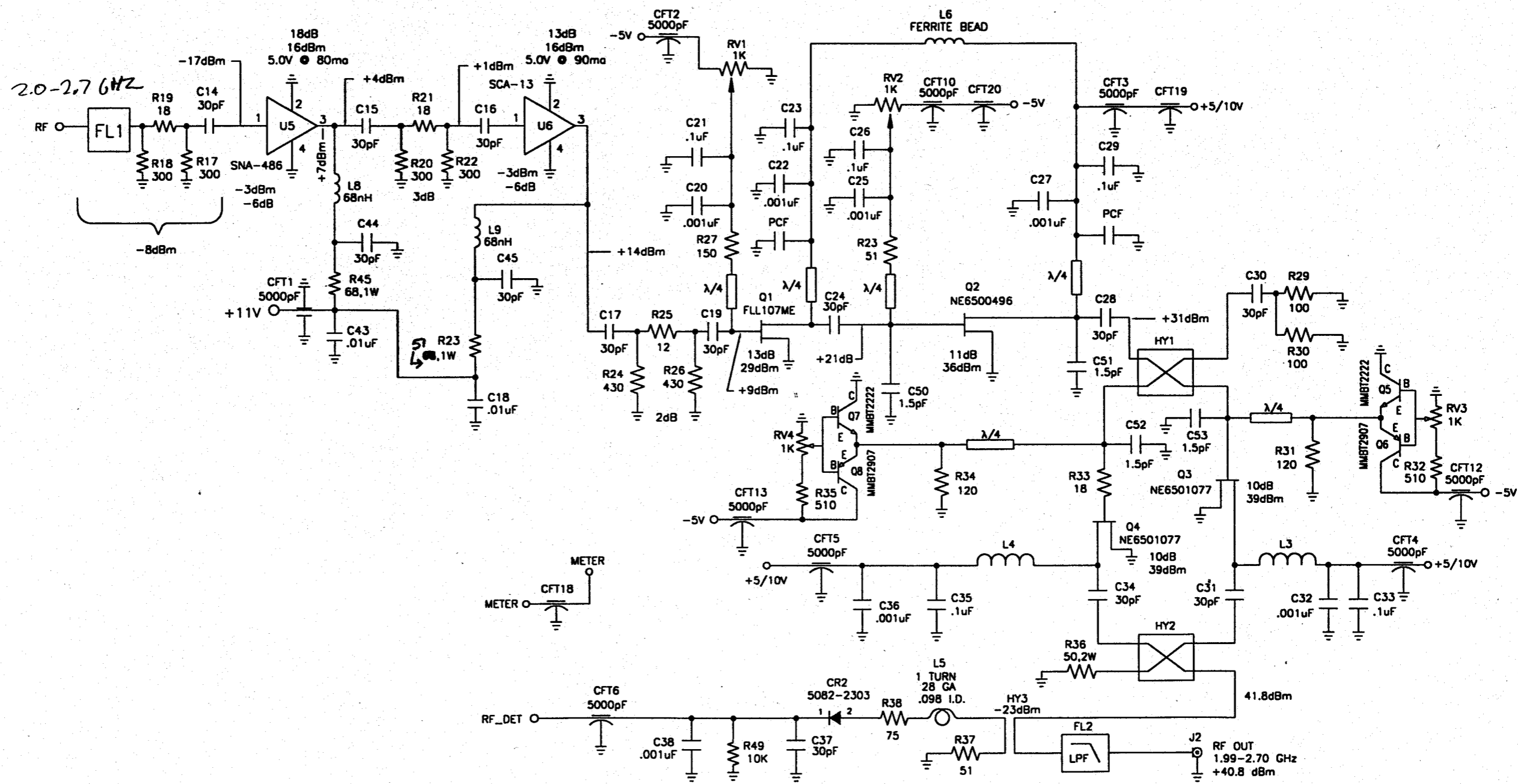



ZONE	REV	REVISION DESCRIPTION	DATE	CHG BY
	C1	SEE ECN #000147, ADDED DASH #	05/22/00	JAG
	D	SEE ECN #000147, NEW PCB ISSUED	11/07/00	JAG



UNLESS OTHERWISE SPECIFIED DIMENSIONS ARE IN INCHES. DO NOT SCALE PRINT	APPLICATIONS		CONTRACT NO.:		 101 BILBY ROAD BUILDING 1 HACKETTSTOWN, N.J.				
	NEXT ASSY								
			DWN:	DATE					
			JAG	12/16/99					
			CHK:						
			ME:						
			EE:						
			JBP	2/23/00					
			QC:						
						SIZE		FSCM NO.	DWG NO.
				B	0NG51	SC902-A105-00DB			
				SCALE: ~		FILE #:		A105D001.DWG	SHEET 1

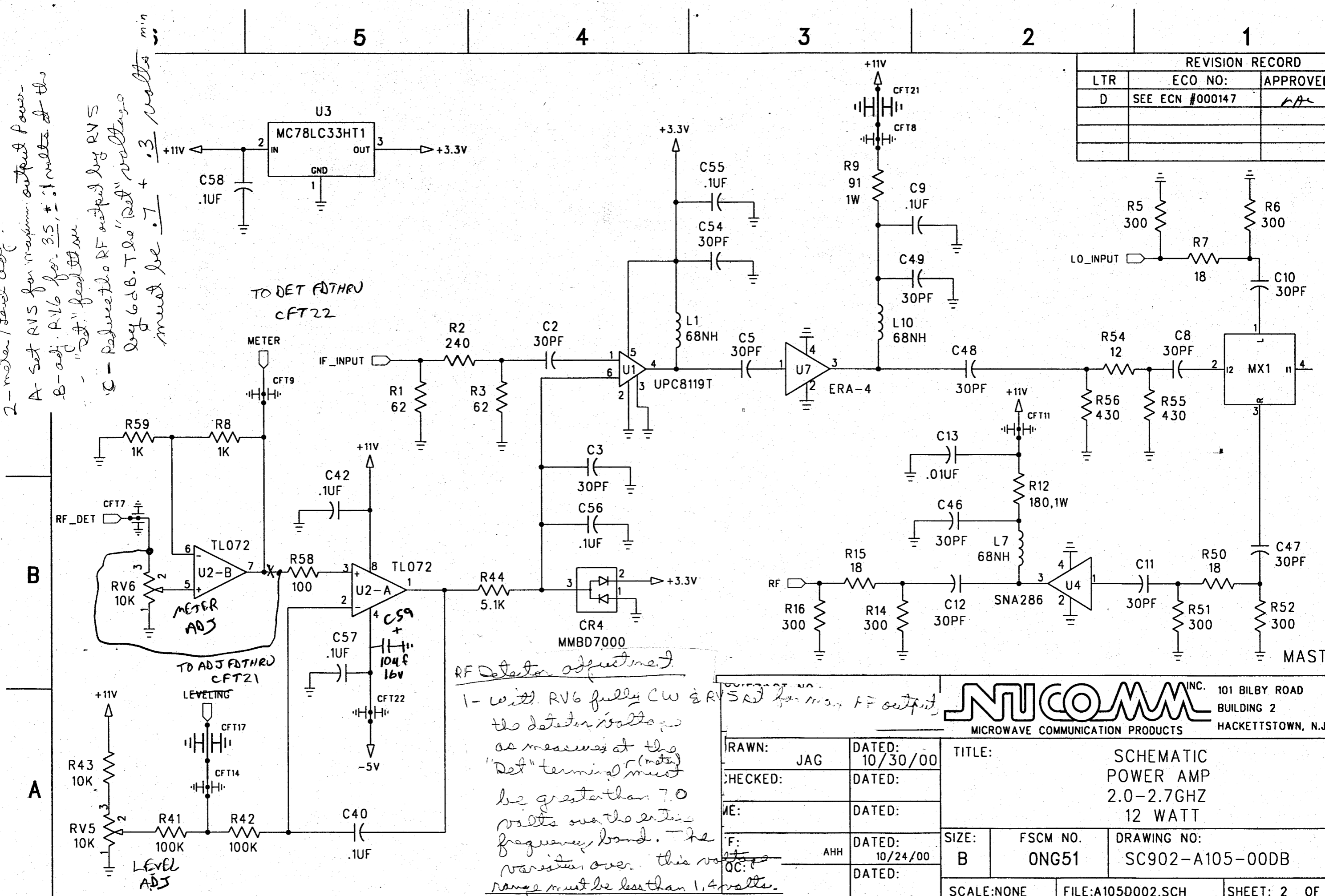
TOLERANCE ON		
ANGLES	.XX	.XXX
0°-15'	±.01	±.005
MACHINE SURFACE EXCEPT AS NOTED		
SCHEMATIC		

64 ✓		
------	--	--

SCHEMATIC 2.0-2.7 GHz 12 WATT POWER AMPLIFIER		
---	--	--

2-meter / level adj.
 A - Set RV5 for maximum output power.
 B - adj. RV6 for 3.5 ± .1 volts at the "Det" terminal.
 C - Refer to the RF output by RV5 by 6 dB. The "Det" voltage must be .7 + .3 volts min.

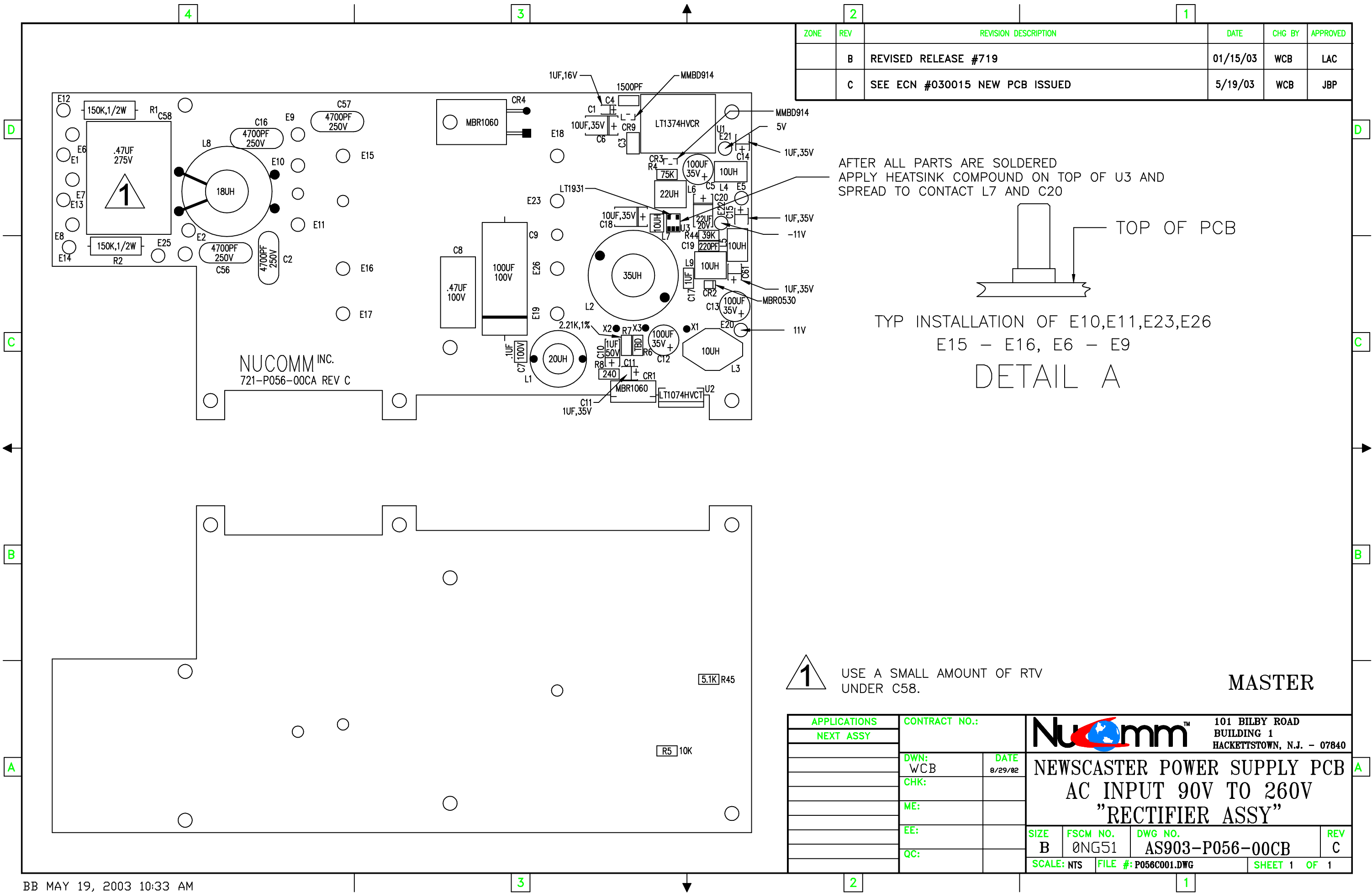
REVISION RECORD		
LTR	ECO NO:	APPROVED
D	SEE ECN #000147	LA



RF Detector adjustment.
 1- With RV6 fully CW & RV5 set for max RF output, the detector voltage as measured at the "Det" terminal must be greater than 7.0 volts over the entire frequency band. The variation over this voltage range must be less than 1.4 volts.

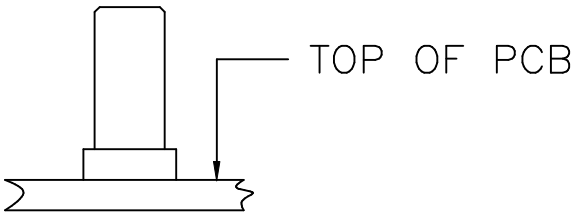
101 BILBY ROAD
BUILDING 2
HACKETTSTOWN, N.J.

DRAWN: JAG		DATED: 10/30/00		TITLE: SCHEMATIC POWER AMP 2.0-2.7GHZ 12 WATT	
CHECKED:		DATED:			
ME:		DATED:			
F: AHH		DATED: 10/24/00			
DATED:		SIZE: B	FSCM NO. ONG51	DRAWING NO: SC902-A105-00DB	
SCALE: NONE		FILE: A105D002.SCH		SHEET: 2 OF	



ZONE	REV	REVISION DESCRIPTION	DATE	CHG BY	APPROVED
	B	REVISED RELEASE #719	01/15/03	WCB	LAC
	C	SEE ECN #030015 NEW PCB ISSUED	5/19/03	WCB	JBP


AFTER ALL PARTS ARE SOLDERED
APPLY HEATSINK COMPOUND ON TOP OF U3 AND
SPREAD TO CONTACT L7 AND C20

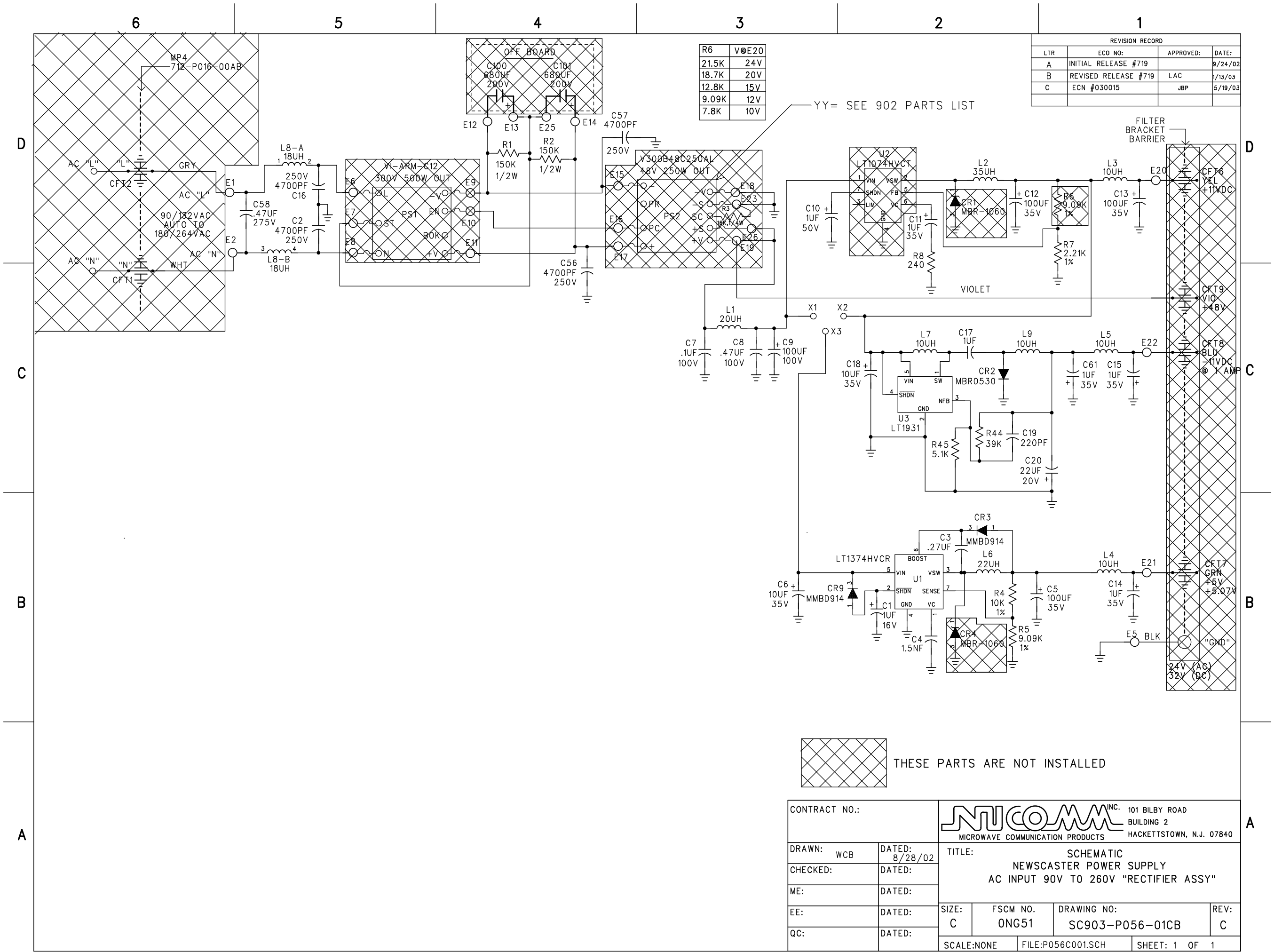


TYP INSTALLATION OF E10,E11,E23,E26
E15 - E16, E6 - E9
DETAIL A

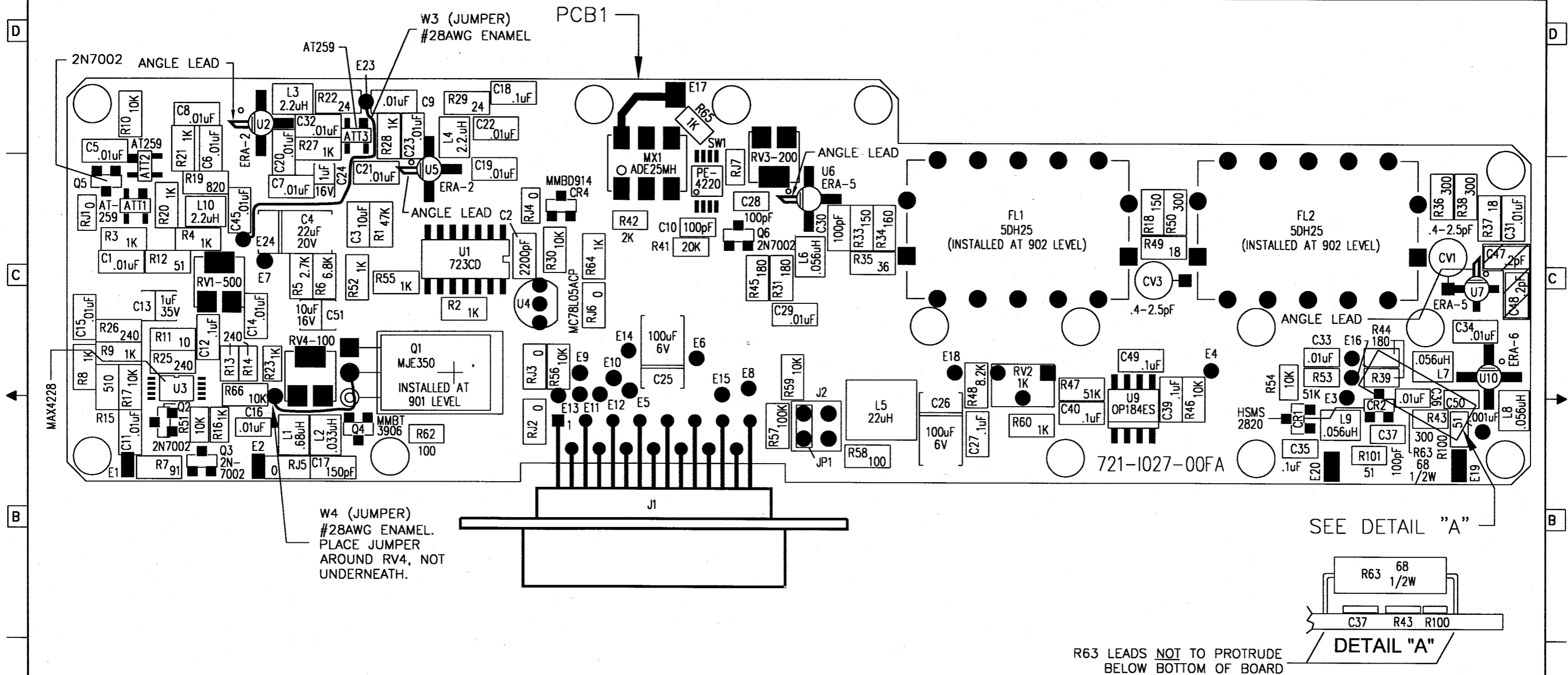
1 USE A SMALL AMOUNT OF RTV
UNDER C58.

MASTER

APPLICATIONS NEXT ASSY		CONTRACT NO.:		 101 BILBY ROAD BUILDING 1 HACKETTSTOWN, N.J. - 07840	
		DWN: WCB	DATE 8/29/02		
		CHK:		NEWSCASTER POWER SUPPLY PCB AC INPUT 90V TO 260V "RECTIFIER ASSY"	
		ME:			
		EE:		SIZE B	FSCM NO. 0NG51
		QC:		DWG NO. AS903-P056-00CB	REV C
		SCALE: NTS		FILE #: P056C001.DWG	SHEET 1 OF 1

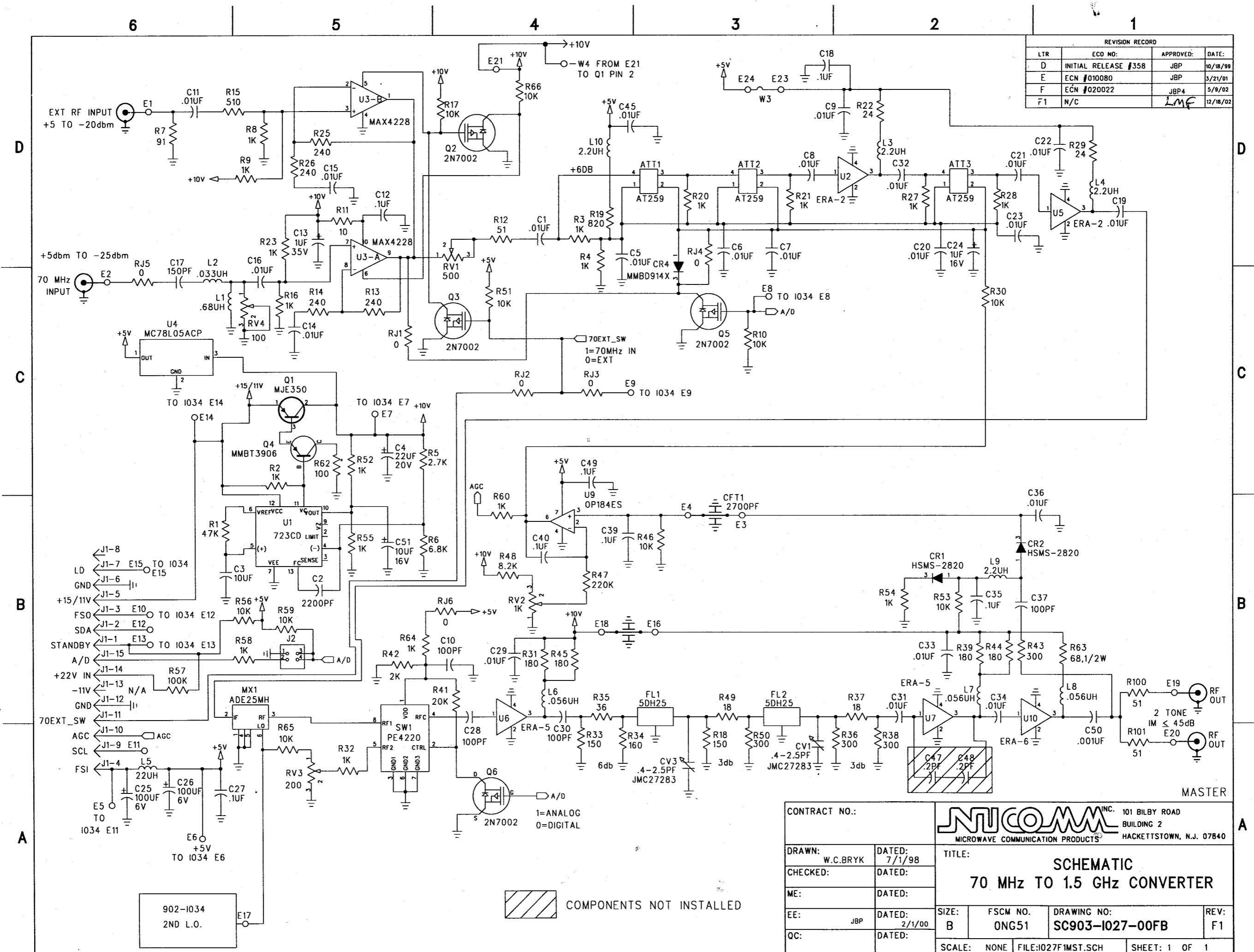


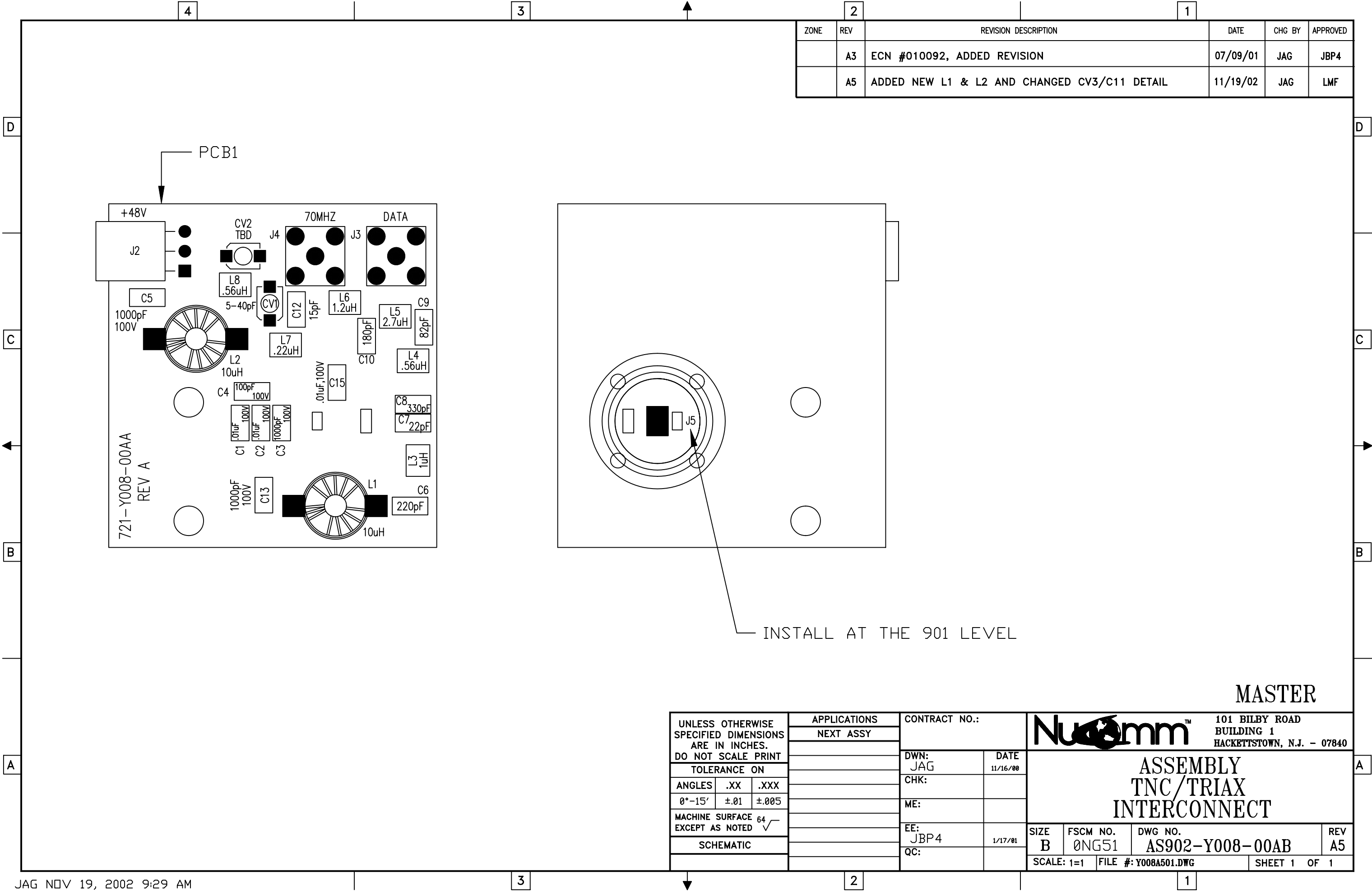
ZONE	REV	REVISION DESCRIPTION	DATE	CHK BY	APPROVED
	F	SEE ECN #020022, NEW PCB ISSUED	09/03/02	RMM	LMF
	F1	CHANGE BARE WIRES TO ENAMEL & U9 BEVEL EDGE	12/18/02	JAG	LMF



THESE PARTS ARE NOT INSTALLED AT THIS LEVEL.

UNLESS OTHERWISE SPECIFIED DIMENSIONS ARE IN INCHES. DO NOT SCALE PRINT TOLERANCE ON			APPLICATIONS		CONTRACT NO.:		<div>Nucomm™</div> <div>101 BILBY ROAD BUILDING 1 HACKETTSTOWN, N.J. - 07840</div>							
			NEXT ASSY											
ANGLES .XX .XXX			DWN: JAG		DATE 04/13/01		ASSEMBLY 70 MHz TO 1.5 GHz CONVERTER							
0°-15' ±.01 ±.005			CHK:											
MACHINE SURFACE 64 EXCEPT AS NOTED ✓			ME:											
SCHEMATIC			EE:											
			QC:				SIZE B		FSCM NO. 0NG51		DWG NO. AS903-1027-00FB		REV F1	
							SCALE: 1=1		FILE #: 1027F101.DWG		SHEET 1		OF 1	





MASTER

UNLESS OTHERWISE SPECIFIED DIMENSIONS ARE IN INCHES. DO NOT SCALE PRINT

TOLERANCE ON

ANGLES

.XX

.XXX

0°-15'

±.01

±.005

MACHINE SURFACE EXCEPT AS NOTED

64

SCHEMATIC

APPLICATIONS

NEXT ASSY

CONTRACT NO.:

DWN:

JAG

DATE

11/16/00

CHK:

ME:

EE:

JBP4

1/17/01

QC:

Nucomm™

101 BILBY ROAD

BUILDING 1

HACKETTSTOWN, N.J. - 07840

ASSEMBLY

TNC/TRIAX

INTERCONNECT

SIZE

B

FSCM NO.

0NG51

DWG NO.

AS902-Y008-00AB

REV

A5

SCALE: 1=1

FILE #: Y008A501.DWG

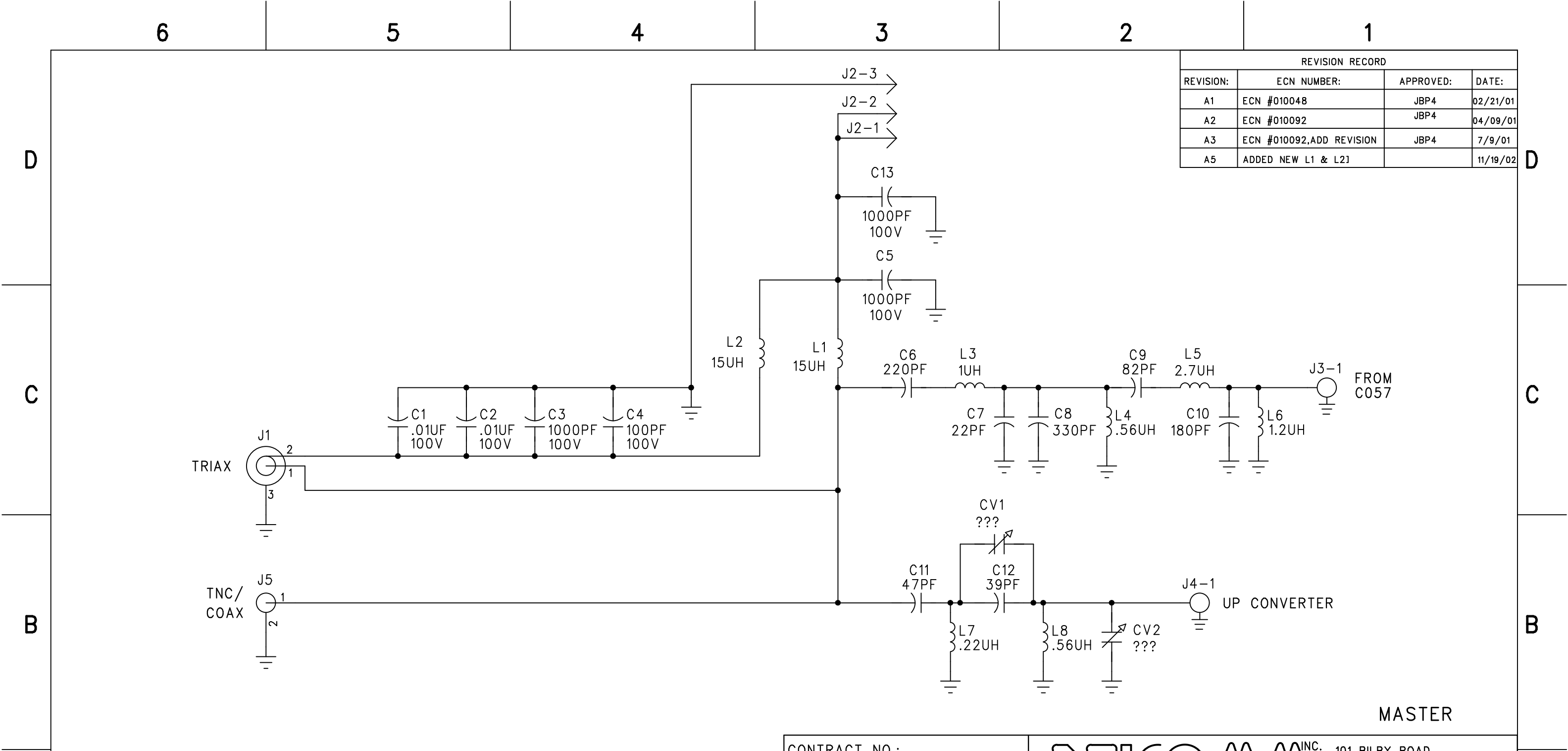
SHEET 1 OF 1

JAG NOV 19, 2002 9:29 AM

3

2

1



MASTER

CONTRACT NO.:		<div><div>NI COMM INC.</div><div>MICROWAVE COMMUNICATION PRODUCTS</div></div> <div>101 BILBY ROAD BUILDING 2 HACKETTSTOWN, N.J. 07840</div>			
DRAWN:	JAG	DATED:	11/13/00	TITLE: SCHEMATIC TNC/TRIAX INTERCONNECT	
CHECKED:		DATED:			
ME:		DATED:			
EE:	JBP4	DATED:	1/17/01	SIZE: B	FSCM NO. ONG51
QC:		DATED:		DRAWING NO: SC902-Y008-00AB	REV: A5
SCALE:NONE		FILE:Y008A500.SCH		SHEET: 1 OF 1	

