

# ZT610 and ZT620



## Quick Start Guide



ZEBRA

### 1 Getting Started

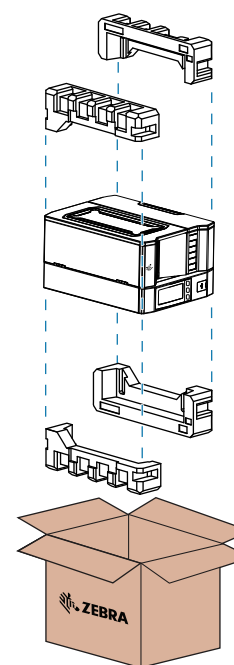
#### IMPORTANT

Go to <http://www.zebra.com/zt600-info> and install the driver for your printer.

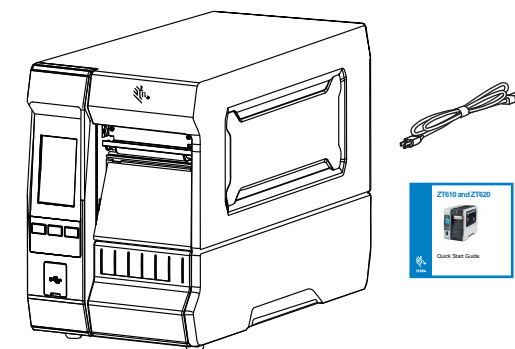


The driver **MUST** be installed before connecting the printer to the computer, or it will cause complications. If your Microsoft Windows-based computer does not have the driver installed for this printer, download it from <http://www.zebra.com/zt600-info> and install it before continuing.

### 2 Remove the Printer from the Box



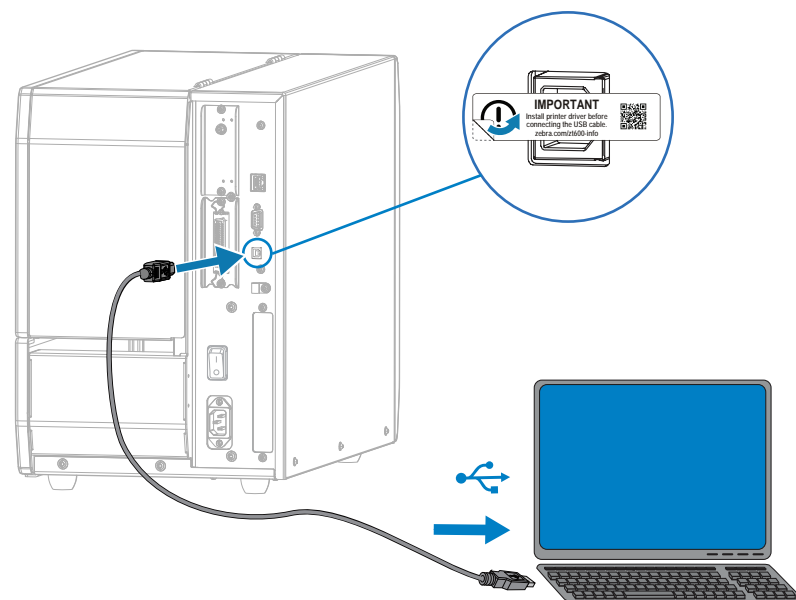
Verify that you have the items shown.



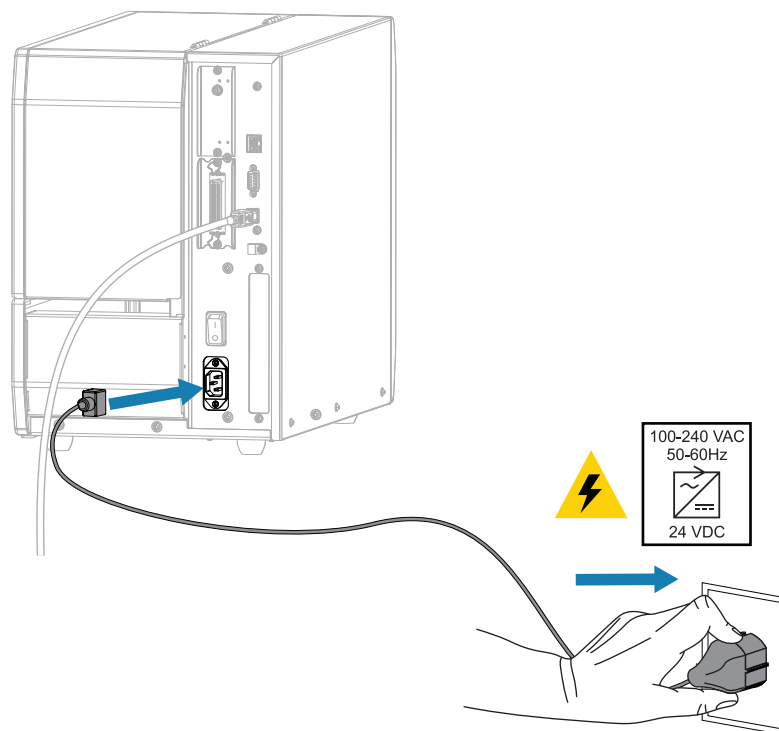
22.7–29.4 kg/50–65 lb

Save the box and packaging materials in case you need to store or ship your printer in the future.

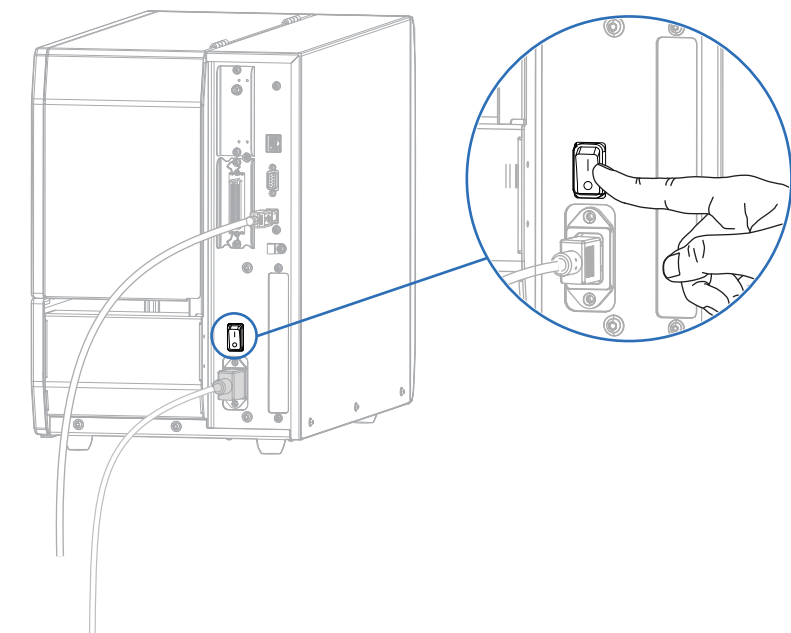
### 3 Connect the USB Cable



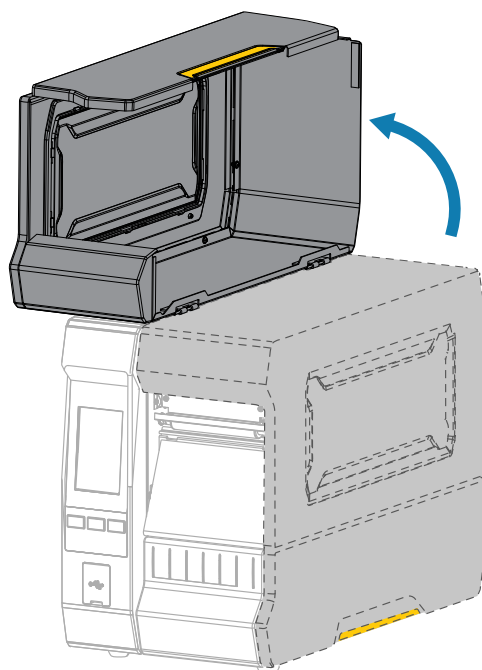
### 4 Plug the Printer into an Electrical Outlet



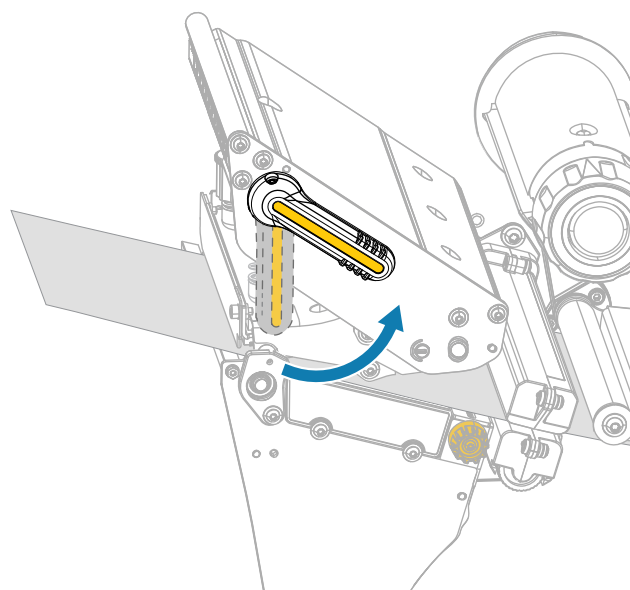
### 5 Turn on the Printer Power



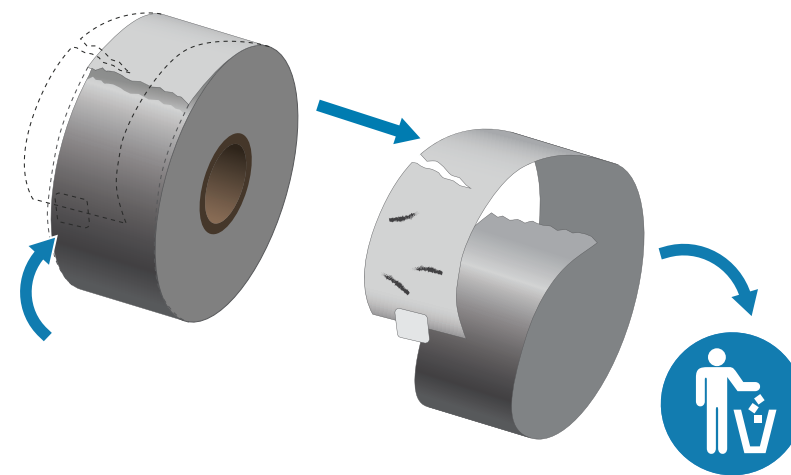
### 6 Open the Media Cover



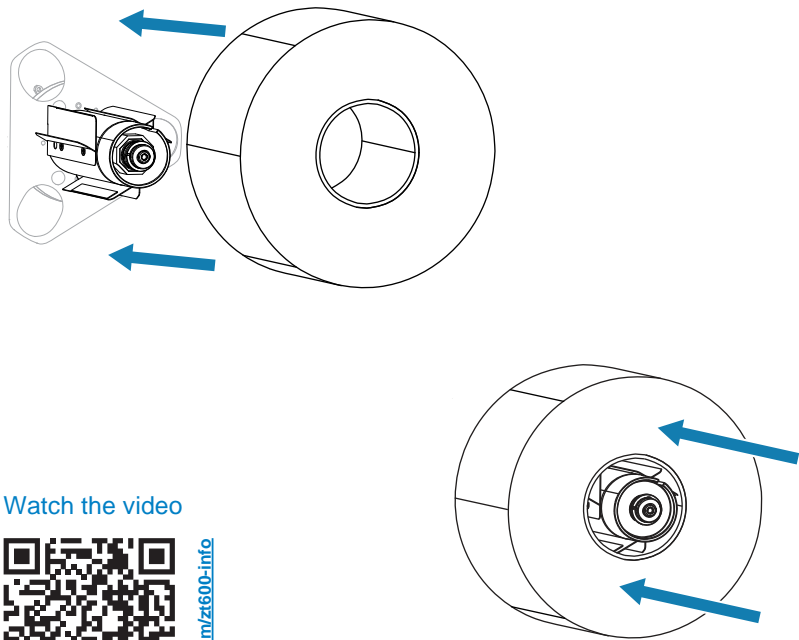
### 7 Release the Printhead Assembly



### 8 Remove Damaged Labels



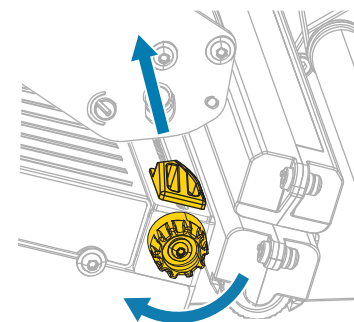
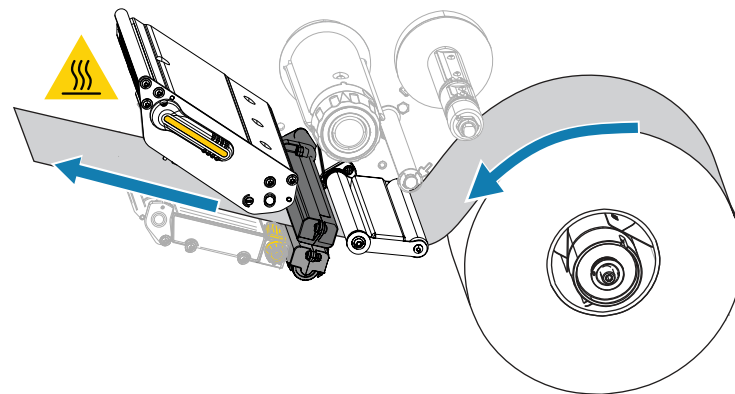
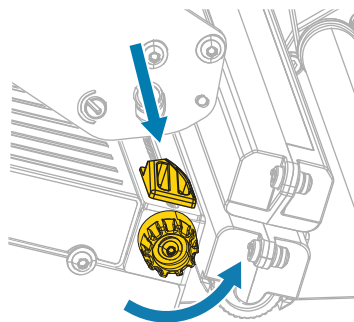
## 9 Load Media



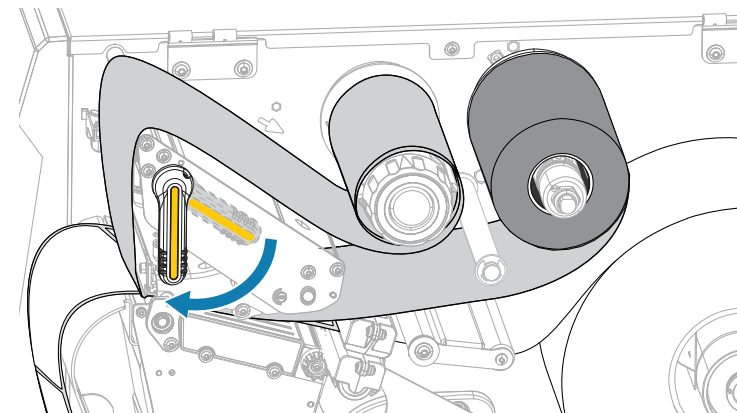
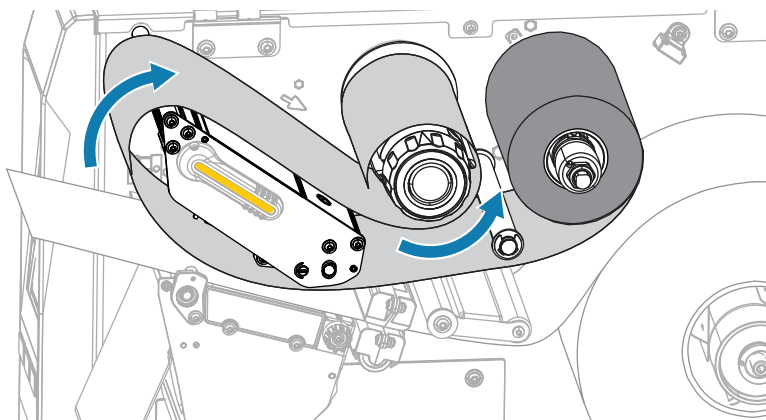
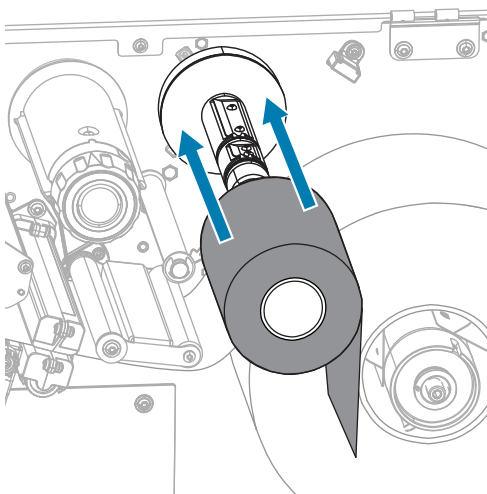
Watch the video



[zebra.com/z600-info](https://zebra.com/z600-info)



## 10 Load Ribbon



## Support and Information



View user documentation and how-to videos.  
[zebra.com/z600-info](https://zebra.com/z600-info)



Need to design a label?  
[zebra.com/zebradesigner](https://zebra.com/zebradesigner)



Learn about genuine Zebra supplies.  
[zebra.com/supplies](https://zebra.com/supplies)



Need to manage your printer?  
[zebra.com/profilemanager](https://zebra.com/profilemanager)



View Quick Answers and Knowledge Base.  
[zebra.com/knowledge](https://zebra.com/knowledge)



Join Community Connection of Zebra users and ambassadors.  
[zebra.com/supportcommunity](https://zebra.com/supportcommunity)



Contact Zebra about your printer.  
[zebra.com/contactsupport](https://zebra.com/contactsupport)



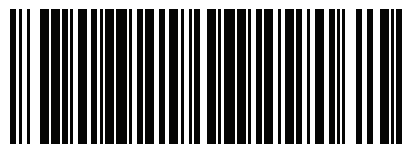
Need to secure your printer?  
[zebra.com/printsecure](https://zebra.com/printsecure)



Learn about product patent information.  
[ip.zebra.com](https://ip.zebra.com)



**ZEBRA**



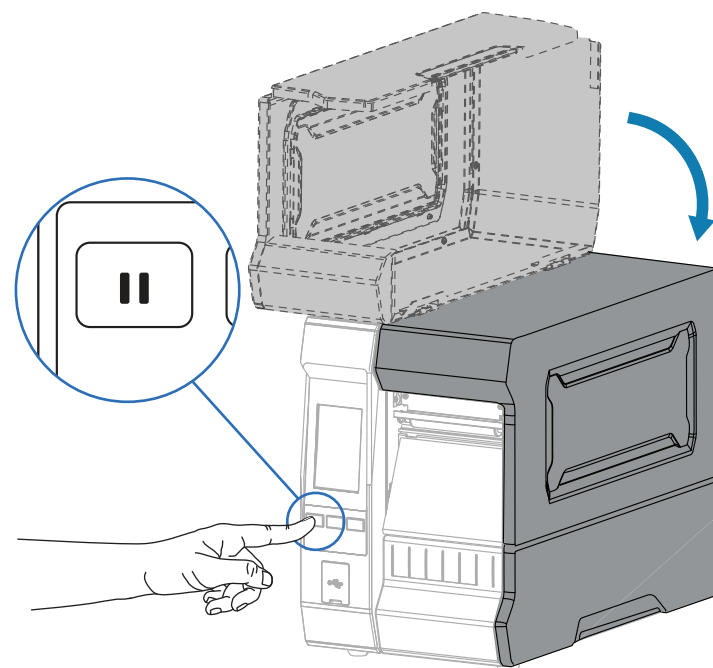
P1132243-01

Zebra Technologies | 3 Overlook Point | Lincolnshire, IL 60069 USA  
zebra.com  
ZEBRA and the stylized Zebra head are trademarks of Zebra Technologies Corp., registered in many jurisdictions worldwide.  
All other trademarks are the property of their respective owners.  
© 2023 Zebra Technologies Corp. and/or its affiliates. All rights reserved.



**ZEBRA**

## 11 Prepare for Printing



#### FCC Compliance Statement (USA)

This device complies with FCC rule. Operation is subject to the following two conditions:

1. This device may not cause harmful interference.
2. This device must accept any interference received, including interference that may cause undesired operation.

This equipment has been tested and found to comply with Class B Digital Devices, pursuant to Part 15 of the FCC rules. These limits are designed to provide reasonable protection against harmful interference when the equipment is operated in a residential environment. This equipment generates, uses, and can radiate radio frequency energy and, if not installed and used in accordance with the product manuals, may cause harmful interference to radio communications. However, there is no guarantee that interference will not occur in a particular installation. If this equipment does cause harmful interference to radio or television reception, the user is encouraged to employ one or more of the following measures:

- Reorient or relocate the receiving antenna
- Increase the separation between the equipment and receiver
- Connect the equipment to an outlet on a circuit different from that to which the receiver is connected
- Consult the dealer or an experienced RF service technician for help

The end product must be labeled, in a visible area, with the following:

Contains FCC ID: I28-WYSBHVDXP

Contains FCC ID: I28-RFIDM6EMTT

#### Modification Warning

The user is cautioned that any changes or modifications not expressly approved by Zebra Technologies could void the user's authority to operate the equipment. To ensure compliance, this printer must be used with fully shielded communication cables.

#### RF Exposure Statement

This equipment complies with FCC radiation exposure limits set forth for an uncontrolled environment. End users must follow the specific operating instructions for satisfying RF exposure compliance. This transmitter must be at least 20 cm from the user and must not be co-located or operating in conjunction with any other antenna or transmitter.

#### Innovation, Science, and Economic Development Canada (ISED) Warning

Le présent appareil est conforme aux CNR d'Industrie Canada applicables aux appareils radio exempts de licence. L'exploitation est autorisée aux deux conditions suivantes: (1) l'appareil ne doit pas produire de brouillage, et (2) l'utilisateur de l'appareil doit accepter tout brouillage radioélectrique subi, même si le brouillage est susceptible d'en compromettre le fonctionnement.

Énoncé d'exposition aux rayonnements: Cet équipement est conforme aux limites d'exposition aux rayonnements ioniques RSS-102 Pour un environnement incontrôlé. Cet équipement doit être installé et utilisé avec une Distance minimale de 20 cm entre le radiateur et votre corps.

This device complies with Industry Canada license-exempt RSS standard(s). Operation is subject to the following two conditions: (1) This device may not cause interference., (2) This device must accept any interference, including interference that may cause undesired operation of the device.

#### ISED Radiation Exposure Statement

This equipment complies with the IC RSS-102 radiation exposure limits set forth for an uncontrolled environment. This equipment should be installed and operated with a minimum distance of 20 cm between the radiator and user body.

Cet équipement est conforme aux limites d'exposition aux rayonnements ioniques RSS-102 Pour un environnement incontrôlé. Cet équipement doit être installé et utilisé avec une Distance minimale de 20 cm entre le radiateur et votre corps.

The end product must be labeled, in a visible area, with the following:

Contains IC: 3798B-WYSBHVDXP

Contains IC: 3798B-RFIDM6EMTT

The device for operation in the band 5150–5250 MHz is only for indoor use to reduce the potential for harmful interference to co-channel mobile satellite systems.

L'appareil fonctionnant dans la bande 5150-5250 MHz ne doit être utilisé qu'à l'intérieur des bâtiments afin de réduire les risques d'interférences nuisibles avec les systèmes mobiles par satellite à canal commun.