

DTU-1141B

PRN-B127

1 <http://business.wacom.com/start>

Download the driver from here, and install it to your computer.

Treiber hier herunterladen und auf dem Computer installieren.

Download hier de driver en installeer deze op uw computer.

Téléchargez le pilote ici et installez-le sur votre ordinateur.

Scaricare il driver da qui, e installarlo nel computer.

Descargue el controlador aquí e instálelo en su ordenador.

Baixe o driver daqui e instale-o no seu computador.

Pobierz sterownik stąd i zainstaluj go na swoim komputerze.

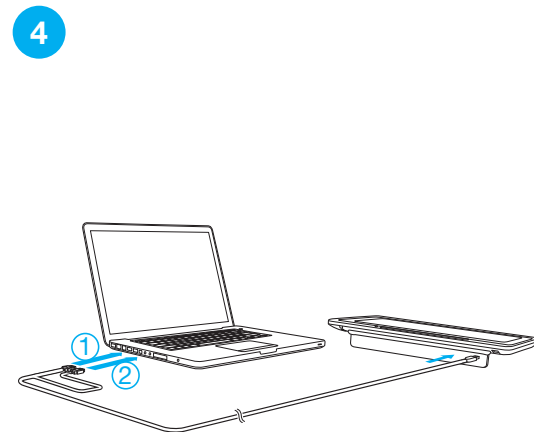
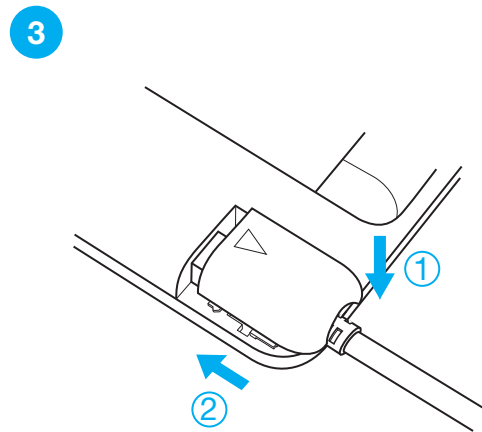
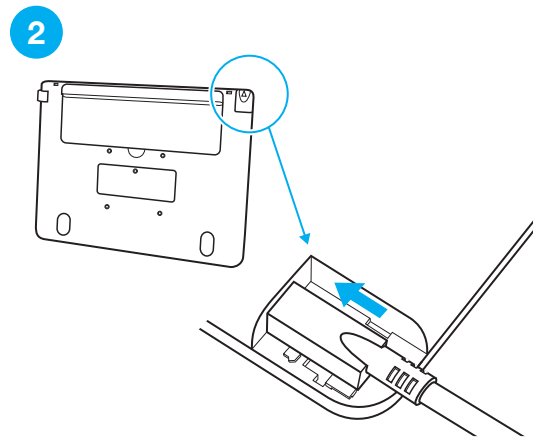
Скачайте драйвер здесь и установите его на своем компьютере.

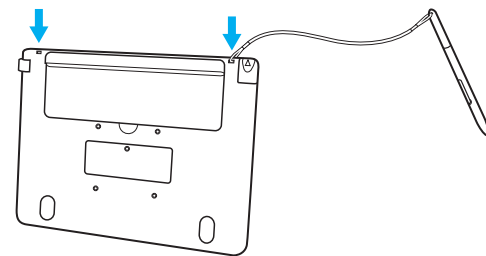
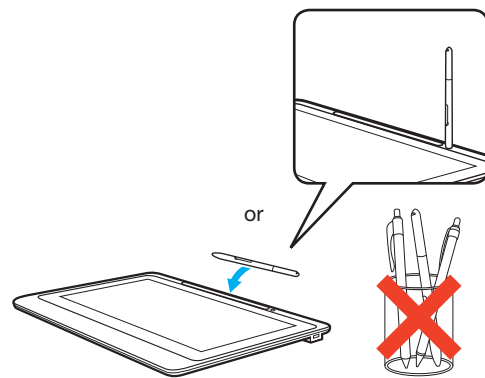
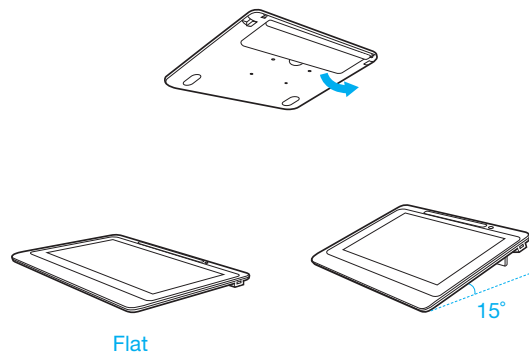
ここからドライバをダウンロードしてコンピューターにインストールしてください。

이곳에서 드라이버를 다운로드하고 컴퓨터에 설치하십시오.

從此處下載驅動程式，並安裝至您的電腦中。

由此處下載驅動程序，并安裝至您的電腦中。





<http://business.wacom.com/start>

Download the user's manual from here:

Benutzerhandbuch hier herunterladen:

Download hier de gebruikershandleiding:

Téléchargez le manuel de l'utilisateur ici :

Scaricare il manuale d'uso da qui:

Descargue el manual del usuario aquí:

Baixe o manual do usuário daqui:

Pobierz stąd instrukcję obsługi:

Руководство пользователя можно скачать здесь:

ここからユーザーズマニュアルをダウンロード :

이곳에서 사용자 매뉴얼을 다운로드 하십시오 :

從此處下載用戶手冊 :

由此处下载用户手册 :

© 2017 Wacom Co., Ltd. All rights reserved.
Wacom and their respective logos are trademarks
and/or registered trademarks of Wacom Co., Ltd.
PRN-B127



Federal Communication Commission Interference Statement

This equipment has been tested and found to comply with the limits for a Class B digital device, pursuant to Part 15 of the FCC Rules. These limits are designed to provide reasonable protection against harmful interference in a residential installation. This equipment generates, uses and can radiate radio frequency energy and, if not installed and used in accordance with the instructions, may cause harmful interference to radio communications. However, there is no guarantee that interference will not occur in a particular installation. If this equipment does cause harmful interference to radio or television reception, which can be determined by turning the equipment off and on, the user is encouraged to try to correct the interference by one or more of the following measures:

- Reorient or relocate the receiving antenna.
- Increase the separation between the equipment and receiver.
- Connect the equipment into an outlet on a circuit different from that to which the receiver is connected.
- Consult the dealer or an experienced radio/TV technician for help.

This device and its antenna(s) must not be co-located or operating in conjunction with any other antenna or transmitter.

This device complies with Industry Canada's licence-exempt RSSs. Operation is subject to the following two conditions:

- (1) This device may not cause interference; and
- (2) This device must accept any interference, including interference that may cause undesired operation of the device.

Le présent appareil est conforme aux CNR d'Industrie Canada applicables aux appareils radio exempts de licence. L'exploitation est autorisée aux deux conditions suivantes : (1) l'appareil ne doit pas produire de brouillage, et (2) l'utilisateur de l'appareil doit accepter tout brouillage radioélectrique subi, même si le brouillage est susceptible d'en compromettre le fonctionnement.