

# OWNER'S MANUAL



## WHISTLER

# 1750/1760/1765 LASER-RADAR DETECTOR



THE WHISTLER GROUP  
CORPORATE HEADQUARTERS  
13016 N. Walton Blvd.  
Bentonville, AR 72712  
TEL (479) 273-6012 FX (479) 273-2927

CUSTOMER RETURN CENTER  
1201 N. Dixieland Rd.  
Rogers, AR 72756  
Customer Service T

If you have questions concerning the operation of this Whistler product please call:

**CUSTOMER SERVICE**  
**1-800-531-0004**

Monday - Friday • 8:00 am - 5:00 pm CT  
or visit our website  
[www.whistlergroup.com](http://www.whistlergroup.com)

Please keep the receipt in a safe place. You may register your product online at [www.whistlergroup.com](http://www.whistlergroup.com). For warranty verification purposes, a copy of your dated store receipt must still accompany any unit sent in for warranty work. If the unit is returned without a dated store receipt an out of warranty service charge applies. Note: Your warranty period begins at the time of purchase. The warranty is validated **only** by the dated store receipt! (not proof of purchase) Now is the time to record the serial number of the unit in the space provided in the warranty section of the manual.

## INTRODUCTION

Dear Whistler Owner,

For many of us, a vehicle is more than just transportation. It can be a mobile office, communications or entertainment center, or simply an expression of our personality. Whistler products are designed to make the time you spend in your vehicle more productive, more fulfilling, safer, or just simply more fun. Our mission is to provide products that improve your driving experience.

Our new units offer not only bold new styling but also many features not found on other detectors at any price. We start with a proven detection circuitry with All Band™ and added top-of-the-line features such as:

- **Whistler's exclusive Safe Driving System** - Incorporates the Safety Warning System (SWS), keeping you informed of road hazards as well as our unique Stay Alert system, it tests your alertness on long solo trips.
- **Vehicle Battery Saver** - battery saver turns the detector off if you forget.
- **High Visibility Display** - a digital display with safety messages to you informed while you drive.
- **Real Voice™** - (1750 only) allows you to keep your eyes on the road.
- **Digital Compass** - (1760, 1765 only) provides cardinal points and direction in 5 degree increments.

Even though these units are packed full of features, they're still very easy to use. To fully utilize your unit to its potential, we recommend reading this entire manual or visit our FAQ page on our web site [www.whistlergroup.com](http://www.whistlergroup.com).

**Note: On 1760 and 1765 models the compass must be calibrated before use!** See Compass Calibration set-up section.

Enjoy your new Whistler and please drive safely.

Sincerely,

THE WHISTLER GROUP

## TABLE OF CONTENTS

Topic	Page
Model Features Summary	
Installation • Mounting Guidelines	
• Visor/Windshield Mounting	
• Power Connection And Fuse Replacement	
• Compass Calibration Set-up	
Operation	
• Power On And Self-Test	
• Feature Engaged Confirmation	
• Compass Mode (1760, 1765 only)	
• Integrated Real Voice™ (1750 only)	
• Auto Quiet/Quiet Modes	
• City Mode	
• Dim/Dark Mode	
• Engaging/Disengaging VG-2 Detection	
• Stay Alert	
• Option Select Mode	
• Teach/Tutorial Mode	
• Vehicle Battery Saver Mode	
Radar, Laser And VG-2 Alerts	
• Radar Alerts	
• Pulse Protection®	
• Safety Radar Audio/Visual Alerts	
• Laser Audio/Visual Alerts	
• VG-2 Audio/Visual Alerts	
• Alert Priority	
• Reset Features	
• Care and Maintenance	
Troubleshooting Guide	
Are Detectors Legal?	
Speed Monitoring Technologies	
• Radar Facts	
• Laser Facts	
• Other Speed Detection Systems	
• Radar Detector Detectors	
Warranty Information	
Specifications	
Accessories	

## WHISTLER FEATURES

Whistler 1750/1760



Whistler 1765



3

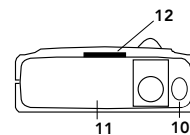
## WHISTLER FEATURES

Whistler's ergonomic and user-friendly design provides a new level of operating convenience. Special features include:

1. **Bracket Release Button** - Provides quick and easy release of the mounting bracket.
2. **Power Jack** - Provides connection for the power cord.
3. **Speaker** - Provides distinct audio warnings for X, K, Ka band radar, safety radar, laser and VG-2.
4. **Power/Dim/Dark/Button** - Turns unit on/off and engages Dim/Dark modes (press and hold for 2 seconds).
5. **Volume Up/Down Buttons** - Adjust volume up or down. Pressing both buttons enters compass calibration mode. (Models 1760/1765 only)
6. **High Visibility Display** - Provides distinct visual confirmation of signals detected, signal strength, and indicates engaged modes of operation.
7. **Quiet/Menu Button** - Pressing QUIET before a signal is detected engages Auto Quiet Mode which automatically reduces the audio level after the initial warning to a low audio level setting. Pressing QUIET during a radar/laser encounter silences audio alerts, while allowing visual alerts to keep you informed.
8. **CITY/CITY 1/CITY 2 Button** - Reduces the annoyance of false alerts typically encountered in urban driving areas.
9. **Laser Antenna (Rear)** - An integrated optical wave-guide provides superior detection of laser signals transmitted from behind.
10. **Laser Antenna (Front)** - High gain optical lens provides increased sensitivity and field of view for leading-edge laser detection.

4

## WHISTLER FEATURES



11. **Radar Antenna** - Compact, high-efficiency antenna receives radar signals.

12. **Mounting Bracket Location** - Slot holds mounting bracket firmly.

### Accessories

Accessories included are highly functional and easy to use.

**Power Cord** - Connects to the unit's power jack and your vehicle's lighter socket.

**Windshield Bracket** - Allows installation of unit on your vehicle's windshield.

## INSTALLATION

### Mounting Guidelines

- Mount the unit as low and level as possible near the center of the windshield. Unit must be level for compass to function properly. (Models 1760/1765 only)
- Do not mount your unit behind wipers, ornaments, mirrored sunscreens, etc. These obstructions have metal surfaces which can affect radar and laser signals and reduce critical warning time. (**Regular tinted glass does not affect reception.**)

5

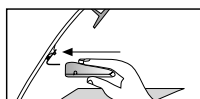
## INSTALLATION

- Some windshields have an Instaclear™ or Electriclear™ type coating, which affect radar signals. Consult your dealer or the owner's manual supplied with your vehicle to determine if your windshield has this coating.
- Avoid placing unit in direct contact with windshield.
- To reduce the possibility of theft, conceal your unit when not in use.

### Windshield Mounting

- Install the two suction cups and rubber bumper onto the bracket by fitting them into their holes.
- Press the suction cups onto the windshield at the location you have chosen. **IMPORTANT: Some newer cars have a plastic safety coating on the inside of the windshield. The suction cups may leave permanent marks on this type of surface. To find out if your vehicle has this type of windshield, check the owner's manual or ask your dealer. We recommend that you do not leave the suction cup bracket on the window in direct sunlight. If the detector is removed, this may cause blistering of the dash in some vehicles.**

- Slide the detector onto the bracket until it locks into place.
- If necessary, the unit may be leveled by bending the windshield bracket. Press the bracket release button and remove the detector before bending.

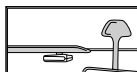
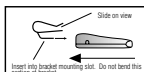


6

## INSTALLATION

### Visor Mounting (optional accessory)

- Slide the visor bracket into the bracket mounting slot.
- Clip the visor bracket onto the visor making sure it is relatively level and has a clear view of the road.



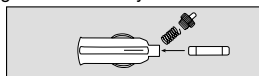
### Power Connection

- Plug the small end of the power cord into the unit's power jack.
- Plug the large end into the vehicle's cigarette lighter.

## OPERATION

### Fuse Replacement

The lighter socket plug is equipped with a replaceable 2 amp 3AG fuse located behind the silver tip. To replace the fuse, carefully unscrew the tip of the plug. (IMPORTANT: Unscrew slowly. The tip contains a spring which may fly out when disassembling.) Insert the new fuse with the spring and screw on the tip. With use, screw cap on plug may loosen. Retighten occasionally.



Unscrew the tip of the lighter socket plug carefully when replacing the 2 amp fuse.

7

## OPERATION

### Compass Calibration Set-up (1760, 1765 only)

The unit will need to be calibrated in order for the compass to provide accurate readings. To calibrate the unit, perform the following procedure:

- Mount the unit level in the center of the vehicle's windshield in which it will be used. Make sure there are no other magnetic sources near the detector (i.e., speaker).
- Select a large clear area (parking lot or field) without any power lines.
- While parked, press both volume buttons simultaneously until unit displays:

CAL MODE

- Drive vehicle slowly in at least two complete circles. If calibration does not automatically finish press both volume buttons simultaneously to complete calibration. The unit will beep twice and display, for example:

CAL DONE

NE 45

**Note:** If unit mounting is relocated in the vehicle, (i.e., visor to windshield mounting or dash mounting), or if the unit is moved to another vehicle, you must recalibrate the compass.

8

## OPERATION

### Power On And Self-Test

Each time your Whistler detector is turned on, an automatic self-test sequence confirms that the speaker and visual displays are functional.

- Press Power or apply Power. Display reads:

Self-Test Display  
for 1750 Model

WHISTLER  
X  
K  
K  
LASER  
SR ON  
VG2 OFF  
B SVR ON  
HIGHWAY

### Memory/Beep Confirmation

All features selected (except Stay Alert and Quiet) are retained in memory. Each time a button is pressed one beep confirms feature "on", two beeps confirm feature "off".

### Audio Level Adjustment

The audio levels can be adjusted high to low, or low to high, in eight steps: (0) is no audio level, (7) the highest, (8) for 1750

- Press Volume ▲ up to increase audio level.
- Press Volume ▼ down to decrease audio level.

As audio level is adjusted, beeps are provided and the display indicates volume level. 1760, 1765 example shown:

VOL 0 No Audio Level  
VOL 7 Highest Level 8

9

## OPERATION

### Integrated Real Voice (1750 only)

When selected, Real Voice will be used to articulate the following:

- Band Identification
- Safety Warning System messages
- Feature Selection

### Compass Mode

The 1760/1765 is programmed from the factory in "Combo Mode". Combo mode means that the unit provides both compass readings as well as detecting laser/radar signals. Through the "Option Select Mode", either laser/radar or compass features can be turned off meaning, Radar equals detection of all police bands and laser; Compass equals no detection of police laser/radar.

**Note:** The unit must be calibrated to provide accurate compass readings. See Compass Calibration Set-up section on page 9.

### Auto Quiet Mode

Auto Quiet reduces the selected audio level to level (1) approximately 5 seconds after a radar or safety radar signal is detected. The alert for any new signal within 20 seconds will resume at level (1). Auto Quiet does not affect VG-2 or laser alerts.

- Press Quiet/Menu (before a signal is detected) to engage Auto Quiet. Display reads:

AUTO  
↓  
QUIET

- Once the Auto Quiet mode is engaged, you may cancel the audio alarm by pressing Quiet.
- Press Quiet (when the unit is not alarming) to cancel Auto Quiet mode.

10

## OPERATION

### Quiet Mode

Quiet cancels audio during an alert and any new alert within 20 seconds. After 20 seconds, approximately 2 beeps are provided on any new alert and unit then remains quiet.

- Press Quiet to cancel the audio.
- Press Quiet a second time during an alert to restore the standard audio alert pattern; or turn the unit off, then on.

### City/City 1/City 2 Mode

Whistler's Three Stage City Mode is designed to reduce the annoyance of automatic door openers, intrusion alarms and other devices which share frequencies with police radar.

- Press City to engage City. Display reads:

CITY

- Pressing City a second time engages City 1. Display reads:

CITY 1

- Pressing City a third time engages City 2. Display reads:

CITY 2

- Pressing City a fourth time cancels City, City 1, and City 2. Display reads:

HIGHWAY

11

## OPERATION

In City Mode, weak speed/safety radar signals give an initial alarm of two beeps, and then remain quiet unless the signal becomes very strong. When the signal strength increases, two additional beeps are provided. In City 1 Mode, only the X band sensitivity is lowered. In City 2 Mode, X-band is not detected. **CAUTION:** When selecting this mode, some towns/small cities may still be using X band radar.

If Auto Quiet is engaged in City 1 or City 2 modes and the unit receives a strong radar signal, the unit performs the Auto Quiet feature. City Modes do not change the audio alert for laser or VG-2.

### Dim/Dark Mode

Dim/Dark Mode reduces the illumination of the display.

- Press and hold Power for 2 seconds to reduce illumination to a Dim setting. Display reads:

DIM

- Pressing and holding the power button for 2 seconds a second time engages Dark Mode. Display reads:

DARK

Dim or dark can be engaged during an alert. In Dark Mode, the display goes dark for as long as a signal is being detected and for 20 seconds after, then the display returns to the dimmer setting.

- Pressing and holding the power button a third time restores full illumination to the display.

### Engaging/Disengaging VG-2

See option select mode to turn this feature on.

12

## OPERATION

### Stay Alert Feature

The Stay Alert Feature is designed to test a driver's alertness. To engage (when unit is not alarming):

- Press and hold City for approximately 2 seconds. Release button during or immediately after the alert is given. Display reads:

RU ALERT

Within 30-60 seconds two beeps are sounded; to show alertness, the driver must press either the City or Quiet button within 3-5 seconds. If the button is pressed within 3-5 seconds, the cycle is repeated.

If a button was not pressed within 3-5 seconds alarm sounds and the display reads:

GET REST

- Press Power to exit.

**WARNING!!!** Stay Alert is NOT intended as a substitute for adequate rest. You should NOT operate a vehicle if you are drowsy. During extended periods of vehicle operation, you should take frequent breaks. Improper reliance on the Stay Alert feature may result in vehicle damage, personal injury or death. **NEVER OPERATE A VEHICLE IF YOU ARE DROWSY.**

13

## OPERATION

### Option Select Mode

Entering Option Select Mode allows you to customize options such as Tone Select, Compass Select, Abbreviated Power Up Sequence and VG-2 Mode. When selecting options, the ▲, ▼ or quiet must be pressed within 20 seconds or options mode will automatically be exited. To enter:

#### 1760/1765 Chart

Press: quiet	*Display Reads:	To Change, Press	Option:
For 2 seconds	COMBO	▲ or ▼	Combo= Radar & Compass Radar=No Compass Compass=No Radar
2nd time	TONE 3	▲ = YES ▼ = NO	Tone 1, 2, or 3 (3 different X, K, Ka patterns)
3rd time	TEST YES	▲ = ON ▼ = OFF	X, K, Ka Audio tones 1 beep during Power Up
4th time	VG2 OFF	▲ = ON ▼ = OFF	Turns VG-2 On Turns VG-2 Off
5th time	SR ON	▲ = ON ▼ = OFF	Turns Safety Radar On Turns Safety Radar Off
6th time	B SVR ON	▲ = ON ▼ = OFF	Battery Saver On Battery Saver Off

14

## OPERATION

#### 1750 Chart

Press: Quiet	*Display Reads:	To Change, Press	Option:
For 2 seconds	TONE 3	▲ or ▼	Tone 1, 2, or 3 (3 different X, K, Ka patterns)
2nd time	TEST YES	▲ = YES ▼ = NO	X, K, Ka Audio tones 1 beep during Power Up
3rd time	VG2 OFF	▲ = ON ▼ = OFF	Turns VG-2 On Turns VG-2 Off
4th time	SR ON	▲ = ON ▼ = OFF	Turns Safety Radar On Turns Safety Radar Off
5th time	VOICE ON	▲ = ON ▼ = OFF	Real Voice engaged Real Voice disengaged
6th time	B SVR	▲ = ON ▼ = OFF	Battery Saver On Battery Saver Off

\*Factory settings.

Press Power anytime to e

15

## OPERATION

### Teach/Tutorial Mode

Provides simulated alerts for each type of signal.

- Press City and Quiet simultaneously and release. Display reads:

TEACH

Quiet mode can also be accessed while Teach/Tutorial mode is engaged.

- Press Power to exit.

### Vehicle Battery Saver Mode

The Vehicle Battery Saver Mode automatically shuts off your detector within 3 hours if you forget to turn it off. The timer is reset if the detector is turned off, unplugged or any button is pressed before the 3 hours have expired. The detector will alert you with an audible and visual warning before it shuts off. Display reads:

PWR OFF

During this warning you can reset the unit by pressing any button. This will reset the timer.

If the unit has automatically turned itself off, press the Power button to turn the unit back on. You can manually engage the Vehicle Battery Saver Mode by pressing and holding the City button until one beep is heard.

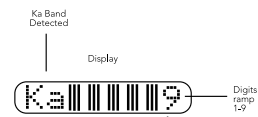
Refer to "Option Select Mode" for instructions for deactivating battery saver mode feature.

16

## RADAR ALERTS

### Speed Radar Audio/Visual Alerts

When X, K or Ka is detected the band ID and signal strength is displayed. The audio alert is continuous and has a geiger counter-like pattern. The faster the beep the closer or stronger the radar source. Example:



### Pulse Protection\*

When a pulse type signal (instant on strong signal) is detected an urgent 3 second audio warning is sounded and the display reads:

PULSE

After 3 seconds standard alert pattern continues.

### Laser Audio/Visual Alerts

When a laser signal is detected the word "Laser" and signal strength is displayed, the audio alert is continuous for a minimum of 3 seconds. Example:

LASER

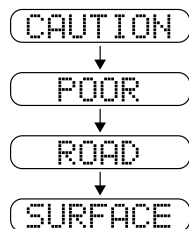
The more "|||" the closer the laser source.

17

In communities where transmitters are located, the Safety Warning System displays over 60 text messages. When Safety Radar is detected the audio alert is geiger counter-like.

#### Safety Warning System Text

Example: Poor Road Surface:



**Note:** Not all areas have Safety Warning System transmitters. Visit the Safety warning System web page at [www.safetyradar.com](http://www.safetyradar.com) for SWS locations.

18

#### VG-2 Audio/Visual Alerts

**Note:** You must turn this feature on in option select mode before it will detect VG-2.

When a VG-2 signal is detected, the detector "hides" its own radiated signal and becomes undetectable by the VG-2.

Text message confirms detection of VG-2.

Every 30 seconds, the detector checks for a VG-2 signal. If a VG-2 signal is still present, the unit continues to hide and repeats the VG-2 alert. If no signal is detected, two beeps are provided, indicating an "all clear" condition. During VG-2 Alert X, K, and Ka band signals cannot be received. (Reference page 27 for VG-2 information.)

#### Alert Priority

When two or more signals are received at the same time, the alert priority is:

1. Laser
2. VG-2
3. Speed Radar
4. Safety Radar

Example:

If X band is alerting, then suddenly VG-2 is detected, the VG-2 warning will override the X band alert.

19

#### Reset Features

All user features can be reset to factory settings.

- Unplug Power Cord from unit.
  - Press and hold Power and Quiet.
  - Plug Power Cord into unit.
  - Wait for 2 beeps.
  - Release Power and Quiet buttons. Unit is now reset.
1. Audio to level (4).
  2. Display reads Highway.
  3. Dim/Dark Mode to full illumination of display.
  4. Auto Quiet Mode OFF.
  5. VG-2 Detection Mode OFF.
  6. Combo ON. (1760/1765 only)
  7. Safety ON.
  8. Vehicle Battery Saver ON.
  9. Full Power Up sequence.
  10. Default TONE 3.
  11. Unit ON or OFF.

**NOTE:** Must calibrate compass after resetting features. (1760/1765 only)

#### Care And Maintenance

During the summer months, avoid prolonged exposure to direct sunlight by removing your unit from the dash when your vehicle is parked for an extended period of time. Do not spray water, cleaners or polishes directly onto the unit. The spray may penetrate through the openings and damage the unit. Also, do not use any abrasive cleaners on the unit's exterior.

20

## TROUBLESHOOTING GUIDE

## ARE DETECTORS LEGAL?

## SPEED MONITORING TECHNOLOGIES

Your Whistler detector is expertly engineered and designed to exacting quality standards to provide you with reliable, trouble-free operation. If your unit has been correctly installed following the guidelines in this manual, but is not operating optimally, please refer to the troubleshooting guide below.

#### PROBLEM: No display or audio.

- Check fuse in Whistler plug; replace if necessary with a 2 amp 3AG type.
- Check fuse for lighter socket; replace if necessary.
- Make sure lighter socket is clean.

#### PROBLEM: Unit alarms when vehicle hits bumps.

- Check for loose lighter socket; tighten and clean.
- Check connections at both ends of power cord. Substitute another cord to determine if cord is defective. Return defective cord to the factory.

#### PROBLEM: Unit alarms when using vehicle equipment, electrical accessories (brakes, power mirrors/windows, directionals, horn, etc.), or when accelerating.

- Vehicle's electrical system, including battery and alternator, may have electrical noise. Install a filter capacitor (470mfd. 25 volt or larger capacitance value) on the back of the lighter socket.

#### PROBLEM: Audio alerts are not loud enough.

- Cancel Auto Quiet Mode or City Mode.
- Check audio level setting (see page 12).

#### PROBLEM: No X band signals.

- Cancel City 2.

#### PROBLEM: Unit gives laser alert when accelerating.

- Possible bad or low quality distributor cap. Replace with high quality cap.

If difficulties occur which cannot be solved by information in this Troubleshooting Guide, please call Whistler Consumer Relations at 1-800-531-0004 before returning your unit for service.

21

#### In Most States YES!

Laser/radar detectors are legal in every state (with the exception of Virginia and Washington, D.C., which have local regulations restricting the use of radar receivers in any vehicle) when used in automobiles or light trucks (under 10,000 lbs.). Similarly, when used in automobiles or light trucks, radar detectors are legal in almost every state. Exceptions are Virginia and Washington, D.C., which have local regulations restricting the use of radar receivers in any vehicle.

Concerning trucks over 10,000 lbs., the Federal Highway Administration (FHWA) issued a regulation, effective January, 1994 which prohibits radar and laser detector use in these types of vehicles nationally.

Prior to the FHWA regulation, laws existed in the state of New York restricting the use of radar detectors in trucks over 18,000 lbs. and in Illinois in trucks over 26,000 lbs.

FCC ID HSXWH03 - 1750/1760

FCC ID HSXWH04 - 1765

This device complies with part 15 of the FCC Rules. Operation is subject to the following two conditions: (1) This device may not cause harmful interference, and (2) this device must accept any interference received, including interference that may cause undesired operation.

#### IMPORTANT

FCC requirements state that changes or modifications not expressly approved by Whistler could void the user's authority to operate the equipment.

22

#### Radar Facts

A radar gun operates by transmitting radio waves at certain frequencies which reflect off objects and are then picked up by the radar gun's receiving section. When a radar beam reflects off a moving target, a measurable frequency shift occurs. The radar unit converts this shift into miles per hour to determine your vehicle's speed.

Currently, the FCC (Federal Communications Commission) permits operation of traffic radar guns at X Band (10.500 - 10.550 GHz), K Band (24.050 - 24.250 GHz), and Ka Band (33.400 - 36.000 GHz).

**Note:** A radar detector will not alarm if an officer is not transmitting on any one of the above radar bands.

23

**Laser Facts**

It's well documented that many radar guns cannot reliably provide the speed of a targeted vehicle that is traveling in a group of vehicles. In contrast, a laser gun can target a specific vehicle out of a line of traffic and determine its speed.

The advantage of laser over radar in terms of target identification is the result of the laser gun's narrow beam. A radar transmission can cover more than a four-lane highway at a distance of 1,000 feet, compared with a laser transmission which covers about 3 feet at the same distance.

For best protection, keep these points in mind:

- Because your vehicle's license plate or headlights are the laser gun's primary targets, mounting your Whistler detector on the dashboard can improve laser detection at short range.
- Do not follow closely behind any vehicle you cannot see through. If you can't see past a vehicle ahead of you, chances are your detector won't either.
- The receiving range of your laser detector will not be the same as a radar detector. Laser guns are most often used at short range.

Whistler Laser/Radar detectors receive all current laser guns which operate at a laser wavelength of 905 +/- 10mm.

- Pro Laser™ I II III
- LT1 20-20
- Ultra Lyte

24

**Other Speed Detection Systems**

Several techniques other than radar or laser are used to measure vehicle speeds. When these methods are being used, no detector can provide a warning. These techniques include:

- Pacing - A patrol car drives behind you and matches your driving speed.
- Vascar/Aircraft - The time it takes a vehicle to travel a known distance is measured.

**Radar Detector Detectors (VG-2)**

The Interceptor VG-2, or simply VG-2, is a microwave receiver used by police to detect signals radiated by the local oscillator of a radar detector. Because its purpose is to identify persons driving with radar detectors, the VG-2 is known as a "radar detector detector".

The VG-2 is the primary tool used by the police to identify radar detector equipped vehicles. If caught, in a state where detectors are illegal, (see page 25), drivers risk losing their radar detector and receiving a fine. In addition, instant-on radar is almost always used in combination with a VG-2, leaving unsuspecting motorists vulnerable to receiving two tickets — one potentially for speeding, the other for possession of a detector.

Having a radar detector capable of detecting the VG-2 may alert you to the presence of a speed trap.

For more information on speed monitoring technologies, please visit our FAQ page on our website:

[www.whistlergroup.com](http://www.whistlergroup.com)

It is the responsibility of the individual radar detector owner to know and understand the laws in your area regarding the legality of the use of radar detectors.

25

**Consumer Warranty**

This Whistler Radar/Laser detector is warranted to the original purchaser for a period of one year from the date of original purchase against all defects in materials and workmanship. This limited warranty is void if the unit is abused, modified, installed improperly, if the housing has been removed, or if the serial number is missing. There are no express warranties covering this product other than those set forth in this warranty. All express or implied warranties for this product are limited to one year. Whistler is not liable for damages arising from the use, misuse, or operation of this product.

**Service Under Warranty**

During the warranty period, defective units will be repaired without charge to the purchaser when returned with a dated store receipt to the address below. Units returned without a dated store receipt will be handled as described in section "Service Out Of Warranty." Due to the specialized equipment necessary for testing a radar/laser receiver, there are no authorized service stations for Whistler brand detectors other than the factory.

When returning a unit for service under warranty, please follow these instructions:

1. Ship the unit in the original carton or in a suitable sturdy equivalent, fully insured, with return receipt requested to:

Whistler Repair Dept.  
1201 North Dixieland Rd.  
Rogers, AR. 72756

26

## WARRANTY INFORMATION

**IMPORTANT: Whistler will not assume responsibility for loss or damage incurred in shipping. Therefore, please ship your unit insured with return receipt requested.**

2. Include with your unit the following information, clearly printed:

- Your name and street address (for shipping via UPS), a daytime telephone number. (No P.O. Box please.) and email address (if applicable).
- A detailed description of the problem (e.g., "Unit performs self-test but does not respond to radar").
- A copy of your dated store receipt or bill of sale.

3. Be certain your unit is returned with its serial number. For reference, please write your unit's serial number in the following space: s/n \_\_\_\_\_.

Units without serial numbers are not covered under warranty.

**IMPORTANT: To validate that your unit is within the warranty period, make sure you keep a copy of your dated store receipt. You may register your warranty online at [www.whistlergroup.com](http://www.whistlergroup.com), however, for warranty verification purposes, a copy of your dated store receipt must accompany any unit sent in for warranty work.**

There are no authorized service stations for Whistler brand detectors other than the Whistler factory.

27

## WARRANTY INFORMATION

**Service Out Of Warranty**

Units will be repaired at "out of warranty" service rates when:

- The unit's original warranty has expired.
- Dated store receipt is not supplied.
- The unit has been returned without its serial number.
- The unit has been abused, modified, installed improperly, or had its housing removed.

The minimum out of warranty service fee for your Whistler detector is \$55.00 (U.S.). If you require out of warranty service, please return your unit as outlined in the section "Service Under Warranty" along with a certified check or money order for \$55.00. Payment may also be made by MasterCard, VISA or American Express; **personal checks are not accepted.** In the event repairs cannot be covered by the minimum \$55.00 service fee, you will be contacted by a Whistler technical service specialist who will outline options available to you. If you elect not to have your unit repaired, it will be returned to you and your repair fee refunded. **CODs will not be accepted!** Therefore, please ship your unit insured with return receipt requested.

**IMPORTANT:** When returning your unit for service, be certain to include a daytime telephone number and email address (if applicable).

**Customer Relations**

If you have questions concerning the operation of your Whistler detector, or require service during or after the warranty period, please call Consumer Relations at 1-800-531-0004. Representatives are available to answer your questions Monday - Friday from 8:00 a.m. to 5:00 p.m. (CT).

28

## SPECIFICATIONS

- **Dimensions:** 1750/1760 - 1.45"H x 3.15"W x 5.35"L

1765 - 1.52"H x 4.73"W x 3.45"L

- **Weight:** 1750/1760 - 6.8 oz.

1765 - 6.8 oz.

- **Laser Wavelength:** 905 ± 50 nanometers (nm)

- **Radar Frequencies:**

10.500 - 10.550 GHz (X Band)

24.050 - 24.250 GHz (K Band)

33.400 - 36.000 GHz (Ka Superwideband)

- **Operating Temperature Range:**

-20° C to +80° C (-4° F to +176° F)

- **Power Requirements:**

Operational 12 to 15 volts DC, 280mA nominal  
Vehicle Battery Saver, 70mA nominal.

- Compass accuracy to 5°, resolution to 5°

One or more U.S. patents apply: #4,315,261; #5,146,227; #5,379,456; #5,666,120, and #5,990,821. Other patents pending.

**Specifications are subject to change without notice.**

29

# ACCESSORIES

The following accessories can be ordered directly from Whistler by calling 1-800-531-0004 or visit our online store at [www.whistlergroup.com](http://www.whistlergroup.com)

Order Code	Description	Price
202138	Visor Bracket	\$ 6.95
202140	Windshield Bracket Kit	\$ 9.95
206294	*Modular Lighter Plug (Requires 206550 or 206551)	\$ 7.95
206550	*Modular Straight Power Cord (5') (Requires 206294)	\$ 6.95
206551	*Modular Coiled Power Cord (7') (Requires 206294)	\$ 7.95
206552	Straight Power Cord (5')	\$ 14.95
206553	Coiled Power Cord (7')	\$ 15.95

# ACCESSORY ORDER FORM

Order Code	Description	Price
206880	Hardwire Kit (10' ) (for wiring to fuse box)	\$ 9.95
203283	Socket Multiplier (Requires 206550 or 206551)	\$ 9.95
159032	Extra suction Cups (8)	\$ 2.95
206666	Modular Cord Package	\$ 17.95
203283	Socket Multiplier	\$ 9.95
402081	Non-Skid Dash Pad	\$ 6.95

\*Modular: interconnecting pieces cord and plug.

Shipping and handling (per order) \$5.00

Prices are subject to change without notice.

## PLEASE SHIP TO:

Name \_\_\_\_\_

Street \_\_\_\_\_

City \_\_\_\_\_ State \_\_\_\_\_ Zip \_\_\_\_\_

Telephone Number (\_\_\_\_\_) \_\_\_\_\_

Order Code/Description	Quantity	Total Price
		\$
Subtotal		
Sales Tax (if Applicable)		
Shipping and Handling*		\$ 5.00
Total Enclosed		\$

SEND ORDER FORM WITH CERTIFIED CHECK OR MONEY ORDER TO:

Whistler CTS

PO Box 1844

Bentonville, AR 72712

IF PAYING BY MASTERCARD, VISA OR AMERICAN EXPRESS  
PLEASE PROVIDE:

Type of Card \_\_\_\_MasterCard \_\_\_\_Visa \_\_\_\_American Express

Name on Card \_\_\_\_\_

Card Number \_\_\_\_\_

Expiration Date \_\_\_\_\_

Cardholder Signature \_\_\_\_\_

\*For expedited shipping costs, contact Whistler Customer Service,  
1-800-531-0004