

MEASUREMENT / TECHNICAL REPORT

Fujitsu Siemens Computers

Model: Personal Computer Scenic MT8

FCC ID: HSSSCENIC8501

Oct. 20, 2000

This report concerns: ☐ Original grant ☒ Class II change
Equipment type: Personal Computer

Request issue of grant: ☒ Immediately upon completion of review
☐ Defer grant per 47 CFR 0.457(d)(1)(ii) until _____ date _____. Company Name agrees to notify the Commission by _____ date _____ of the intended date of announcement of the product so that the grant can be issued on that date.

Measurement procedure used: ☒ ANSI C63.4-1992
☐ FCC/OET MP-4(1987)
☐ other _____

Limits on compliance with: CISPR 22 resp. FCC class B

Application for Certification prepared by:
Alexander Peschka
Fujitsu Siemens Computers GmbH
Buergermeister-Ulrich-Str. 100
86199 Augsburg
Germany
Tel.: +49 821 804-2502
Fax: +49 821 804 2675

Applicant for this device:

Fujitsu Siemens Computers GmbH
Buergermeister-Ulrich-Str. 100
86199 Augsburg
Germany
Tel.: +49 821 804-0



Engineer: _____
Alexander Peschka
Fujitsu Siemens Computers
Personal Computer Scenic MT8

FCC Identifier:
HSSSCENIC8501

Date: Oct. 20, 2000

Page:
1/41

Table of Contents

1 GENERAL INFORMATION	4
1.1 Product Description	4 - 6
1.2 Related Submittal(s)/Grant(s)	7
1.3 Tested System Details	7 - 9
1.4 Test Methodology	10
1.5 Test Facility	10
1.6 Referenced Rules Sections	10
2 PRODUCT LABELING	11
Figure 2.1 FCC ID Label: see attached file	11
Figure 2.2 Location of Label on EUT: see attached file	11
3 SYSTEM TEST CONFIGURATION	12
3.1 Justification	12 - 13
3.2 Video Mode Justification	14 - 15
3.3 EUT Exercise Software	16
3.4 Special Accessories	16
3.5 Equipment Modifications	17
3.6 Configuration of Tested System	17
Figure 3.1 Configuration of Tested System	18
4 BLOCK DIAGRAM OF EQUIPMENT UNDER TEST	19
4.1 Block Diagram Description	19
4.2 Clockfrequencies of the EUT	20
4.3 Theory of Operation	20
Figure 4.1 Block Diagram	21
5 CONDUCTED EMISSION DATA	22
5.1 Test Procedure	22
5.2 Measured Data: see attached file	22 - 25
5.3 Referenced Rules	26
5.4 Test Instrumentation Used, Conducted Measurement	26

6	RADIATED EMISSION DATA	27
6.1	Test Procedure	27
6.2	Measured Data: see attached file	28 - 31
6.3	Reference Rules Sections	32
6.4	Test Instrumentation Used, Radiated Measurement	32
6.5	Field Strength Calculation	33
6.6	Table of Correction Factors	34 - 37
7	CONDUCTED AND RADIATED MEASUREMENT PHOTOS: see attached files	38
8	EXTERNAL PHOTOS OF EUT: see original grant, date Mar. 10, 1999	39
9	INTERNAL PHOTOS OF EUT: see attached files	40
10	USER MANUAL: see attached file	41

1 GENERAL INFORMATION

1.1 Product Description

The Siemens Computer MT8 is a tower personal computer. The system board integrates the Pentium Processor, memory, and I/O-technologies. The system now can now be assembled with Processors Intel Pentium III up to 850 MHz.

Original grant, dated: Mar. 10, 1999

First class II change, dated: Aug. 18, 1999

Second class II change, dated: Dec. 14, 1999

Third class II change, dated: May 15, 2000

Description of the power supplies:

- Power supplies:

Minebea	S26113-E447-V20
Newton	S26113-E447-V50

Features Overview:

Chip Set – Intel 440BX/ZX and PIIX4E

- 2 IDE ports for up to 4 IDE devices
support enhanced bus master ATA33 IDE with WIN98™ and NT™
- 2 USB ports with 12 Mbits/s

Super I/O – SMCS FDC37M807

- One internal floppy port for one floppy and one floppy tape drive
support up to 2,88 Mbyte floppy
- 2 external PS2 ports - support keyboard and mouse connector exchange

- 1 external parallel port
- 1 external serial port (COM1)
- 1 internal connector for chipcardreader or external serial (COM2) port via wire

Main memory

- Two 3,3 V DIMM sockets for 16 Mbyte up to 768 Mbyte support only unbuffered SDRAMs

Security features

- Floppy write protection by BIOS and by switch
- System and BIOS password
- Flash write protection against virus
- SPD EEPROM protection against virus
- Intrusion check

Power management

- ACPI and APM
- On/Sleep/Off by power switch
- On/Sleep/Off by keyboard
- On/Off by SNI desk software
- On by real time clock (RTC)
- On by chip card reader
- On by external serial port 1
- Wake on LAN (WOL)
- Wake on PCI and AGP cards
- Wake on chip card reader
- Monitor power switch control

BIOS features

- Flash EPROM 2 Mbit
- System BIOS
- USB legacy support
- InCom LAN boot support
- Intel LAN desk Service Agent (LSA) support

Environmental protection

- Battery on socket for recycling

Form factor and slots

- Micro ATX
- 1 AGP slot
- 2 PCI slots
- 1 shared PCI-Bus / ISA-Bus slot

The personal computer is assembled by Fujitsu Siemens Computers GmbH Bürger-,
meister-Ulrich-Str. 100, 86199 Augsburg.



Fujitsu Siemens Computers
Personal Computer Scenic MT8

FCC Identifier:
HSSSCENIC8501

Date: **Oct. 20, 2000**

Page:
6/41

1.2 Related Submittal Grant

N/A

1.3 Tested System Details

The FCC IDs for all equipment, plus description of all cables used in the tested system are:

Pos	Model Number (Serial Number)	FCC ID	Description	Cable Description (length in [cm])
1	Fujitsu Siemens Computers, MT8 (Scenic xL-1107) S26361-K516	HSSSCENIC8501	PC EUT	unshielded power cord [292]
2	Fujitsu Siemens Computers MCM 17P1 YEDA220223	A3LCSE783	Monitor	unshielded power cord [175] shielded video cable [168]
3	Fujitsu Siemens Computers S26381-K240-V120 ---	HSS01TASTK240	Keyboard	shielded keyboard cable [143]
4	Microsoft MS 2.1A 0056712-5	C3KKMP1	Mouse	shielded mouse cable [183]

Pos	Model Number (Serial Number)	FCC ID	Description	Cable Description (length in [cm])
5	Logitech M-UB48 LZA83300023	DLZ211137	USB mouse	shielded mouse cable [174]
6	Logitech M-UB48 LZA83300044	DLZ211137	USB mouse	shielded mouse cable [174]
7	Hewlett Packard HP 2225C+ (3002S66627)	DSI6XU2225	Printer, parallel I/F	unshielded AC ca- ble [180], shielded centronics cable [190]
8	Hewlett Packard HP 2225D+ (2952S61229)	DSI6XU2225	Printer, serial I/F	unshielded power cord [185], shiel- ded serial cable [190]
9	Bay Networks HUB 100BaseT	N/A	HUB	shielded cable
	<u>Pos 1 contains:</u>			
a ₁	Minebea, 200 W, S26113-E447-V20	N/A	Power supply	
a ₂	Newton, 200 W, S26113-E447-V50	N/A	Power supply	
b ₁	Maxtor in easy change 90845D4	N/A	Hard disk drive, 8 GB	

Pos	Model Number (Serial Number)	FCC ID	Description	Cable Description (length in [cm])
b ₂	Fujitsu in easy change MPE3043 AE	N/A	Hard disk drive, 4 GB	
c ₁	Mitsumi CRMC-Fx4830T S26361-H595	N/A	CD-ROM drive	
c ₂	Panasonic SR-8586-B S26361-H580	N/A	CD-ROM drive	
d	Sony MPF920-C	N/A	Floppy disk drive	
e	Fujitsu Siemens Computers S26361-D1107-A11	N/A	System board	
f	Samsung PC100	N/A	SDRAM 128 MB	
g	Intel Pentium III 80526/PY850256	N/A	Processor module	
h	Matrox Millenium G200 AGP	DOC: G2+/MILA/8B/20	Graphic controller board	

Remark: pos. 1a₁ / 1a₂ / 1b₁ / 1b₂ / 1c₁ / 1c₂ optional

1.4 Test Methodology

Both, conducted and radiated tests were performed according to the procedures in ANSI C63.4-1992. Radiated testing below 1 GHz was performed at an antenna to EUT distance of 10 meters above 1 GHz at an antenna to EUT distance of 3 meters. All radiated emission measurements were done in an anechoic chamber. Limits for radiated and conducted emission are in compliance with CISPR 22 resp FCC class B.

1.5 Test Facility

The test site is located at Fujitsu Siemens Computers GmbH, Bürgermeister-Ulrich-Str. 100, 86199 Augsburg, Germany. This site consist of a 10 m semi anechoic chamber for radiated emission testing and of two shielded cabinets for conducted emission testing. The 10 m semi anechoic chamber is conform with the NSA-limits described in CISPR22, CISPR16 and ANSI C63.4.1992. The site is registered by the German accreditation body DAR-Registration No. TTI-P-G114 and by the Federal Communications Commission on April 07, 2000, Registration Number 90935.

1.6 Referenced Rules Sections

N/A

2 PRODUCT LABELING

2.1 FCC ID Label: see attached file

2.2 Location of Label on EUT: see attached file

3 SYSTEM TEST CONFIGURATION

3.1 Justification

The system was configured for testing in a maximum fashion (as a customer can use it). Each type of external ports was connected with a peripheral unit (e.g. serial port connected to a serial printer, external keyboard port connected to a keyboard and so on). During radiated emission the monitor was powered via system unit, during conducted emission also the external monitor supply was tested.

The system clock is 100 MHz, the clock frequency was tested with the corresponding worst case processor:

100 MHz clock: Intel Pentium III 850 MHz

The system is provided with two kinds of power supplies:

- Minebea S26113-E447-V20
- Newton S26113-E447-V50

According both worst case results concerning the test report of the original grant (dated: Mar. 10, 1999), the first class II change (dated: Aug. 18, 1999), the second class II change (dated: Dec. 14, 1999) and the third class II change (dated: May 15, 2000) the following configuration has been tested:

Referring to radiated emission the following (worst case) results are applicable:

Minebea PSU:

Frequency range 30 MHz - 1 GHz:

100 MHz clock/Pentium III 850 MHz, video resolution 1024 x 768/100 Hz

Frequency range 1 GHz - 5 GHz:

100 MHz clock/Pentium III 850 MHz, video resolution 1024 x 768/100 Hz

Newton PSU:

Frequency range 30 MHz - 1 GHz:

100 MHz clock/Pentium III 850 MHz, video resolution 1024 x 768/100 Hz

Frequency range 1 GHz - 5 GHz:

100 MHz clock/Pentium III 850 MHz, video resolution 1024 x 768/100 Hz

Referring to conducted emission the following (worst case) results are applicable:

Minebea PSU:

100 MHz clock/Pentium III 850 MHz, video resolution 1024 x 768/100 Hz
monitor power via EUT

100 MHz clock/Pentium III 850 MHz, video resolution 1024 x 768/100 Hz
monitor power from peripheral device LISN

Newton PSU:

100 MHz clock/Pentium III 850 MHz, video resolution 1024 x 768/100 Hz
monitor power via EUT

100 MHz clock/Pentium III 850 MHz, video resolution 1024 x 768/100 Hz
monitor power from peripheral device LISN

3.2 Video mode Justification

The system was tested in video graphic mode 1024 x 768 / 100 Hz. The worst case combination according the test results of the original grant (dated: Mar. 10, 1999), the first class II change (dated: Aug. 08, 1999), the second class II change (dated: Dec. 14, 1999) and the third class II change (dated: May 15, 2000) has been tested:

The following data are applicable:

radiated emission:

Minebea PSU:

Frequency range 30 MHz - 1 GHz:

100 MHz clock/Pentium III 850 MHz, video resolution 1024 x 768/100 Hz

Frequency range 1 GHz - 5 GHz:

100 MHz clock/Pentium III 850 MHz, video resolution 1024 x 768/100 Hz

Newton PSU:

Frequency range 30 MHz - 1 GHz:

100 MHz clock/Pentium III 850 MHz, video resolution 1024 x 768/100 Hz

Frequency range 1 GHz - 5 GHz:

100 MHz clock/Pentium III 850 MHz, video resolution 1024 x 768/100 Hz

conducted emission:

Minebea PSU:

100 MHz clock/Pentium III 850 MHz, video resolution 1024 x 768/100 Hz
monitor power via EUT

100 MHz clock/Pentium III 850 MHz, video resolution 1024 x 768/100 Hz
monitor power from peripheral device LISN

Newton PSU:

100 MHz clock/Pentium III 850 MHz, video resolution 1024 x 768/100 Hz
monitor power via EUT

100 MHz clock/Pentium III 850 MHz, video resolution 1024 x 768/100 Hz
monitor power from peripheral device LISN

3.3 EUT Exercise Software

The EUT exercise program used during radiated and conducted testing was designed to exercise the various system components in a manner similar to typical use.

The used sequence is:

- scrolling "H" with applicable video mode (see 3.2)
- internal Floppy drive writes to the HD and reads back
- internal CD-ROM writes to the HD
- "H`s" are sent to the printer ports
- data is sent to USB ports
- LAN data communication

3.4 Special Accessories

As shown in Figure 3.1, all interface cables used for compliance testing are shielded like normally supplied by the manufacturer. All cable connectors feature integral metal hoods for shielding.

3.5 Equipment Modifications

To achieve compliance to Class B levels, the following modifications were made during compliance testing:

no modifications

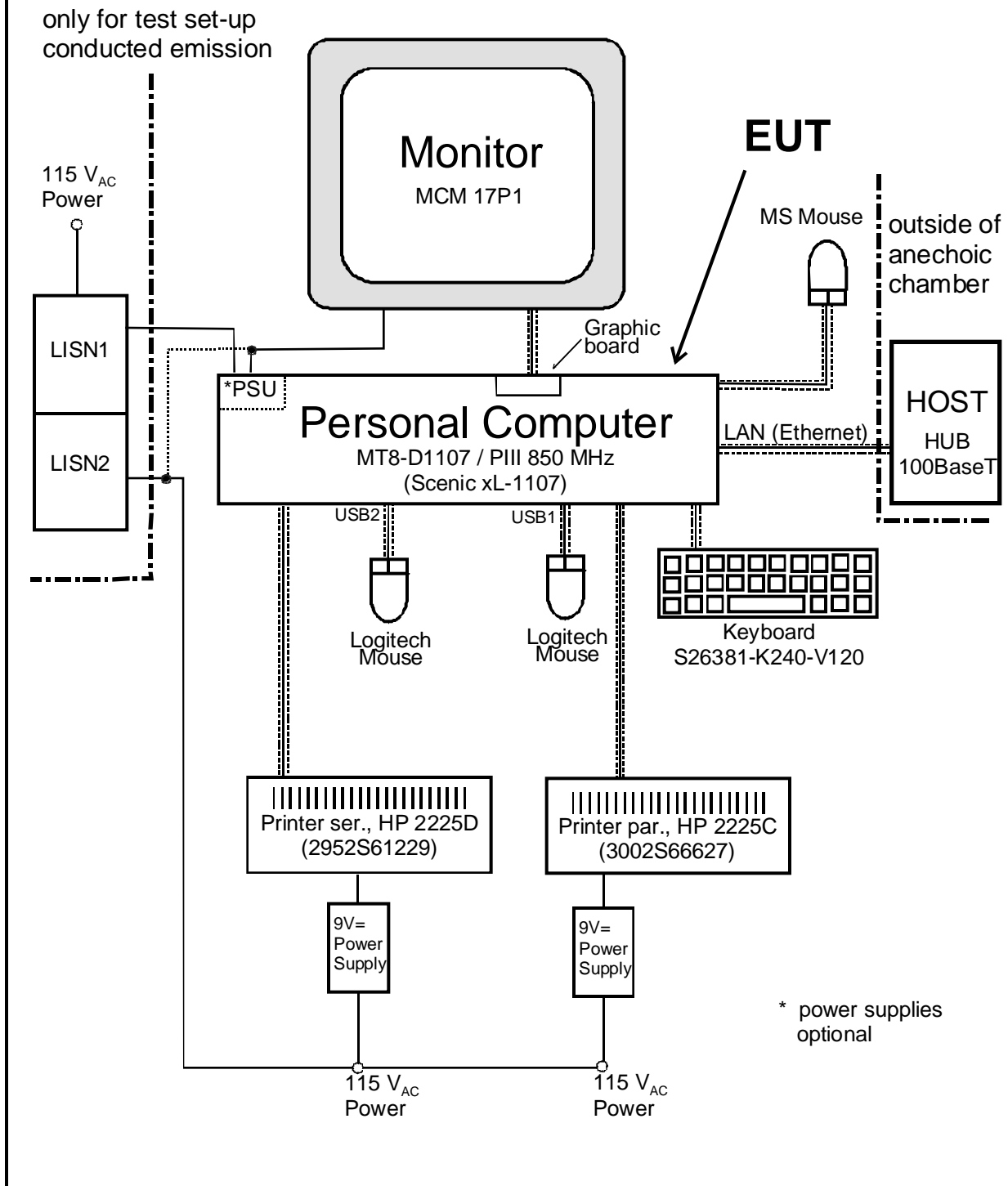
Applicant Signature _____ Date _____

Typed/Printed Name _____ Position _____

3.6 Configuration of Tested System

All necessary tests were carried out like figure 3.1. The system was used according to paragraph 1.1. During test for conducted emission the EUT was connected to a LISN. All peripherals were supplied by a second LISN. The equipment was configured according to ANSI C63.4-1992 Fig 11.

Figure 3.1 Configuration of Tested System



4 BLOCK DIAGRAM OF EUT

see fig 4.1 page 21

4.1 Block Diagram Description (see fig. 4.1)

The major parts of the system are (fig 4.1).

- System board
- Power supply
- Floppy disk drive
- Hard disk drive
- CD-ROM drive
- Peripheral connector area (Keyboard, Mouse, Ser. 1, Parallel Port, LAN and USB)

The detailed diagram of the system board is shown in fig 4.1

The personal computer works exactly like a traditional P.C..

4.2 Clockfrequencies of EUT

Clock synthesizer	14.318 MHz
Front side bus	66.6 / 100 MHz
Memory	66.6 / 100 MHz
PCI-bus	33.3 MHz
PIIX4 to IDE and USB	33.3 MHz
ISA Bus	8.2 MHz
I/O controller	14.3 MHz
USB	48 MHz
AGP bus	66.6 MHz

4.3 Theory of Operation

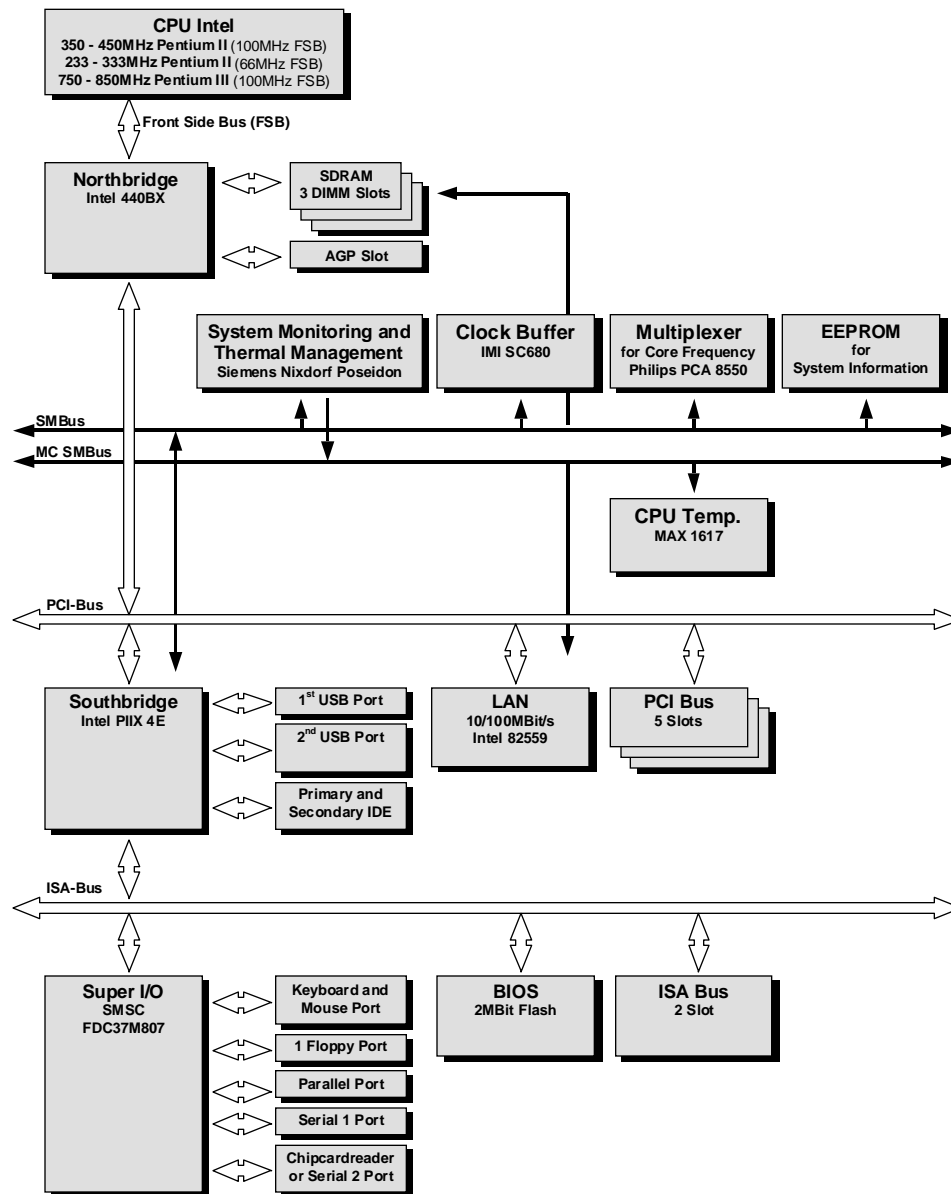
The tower PC works exactly as a traditional PC.

The processors run internally between 233 and 850 MHz, the system clock is 66.6 MHz or 100 MHz and is multiplied by the processors internally by 3.5, 4.0, 4.5, 5.0, 5.5, 6.0, 7.5 or 8.5.

The highest possible frequencies and the corresponding processors are:

System clock	Processor	factor
66.6 MHz	233 MHz	3.5
66.6 MHz	266 MHz	4.0
66.6 MHz	300 MHz	4.5
66.6 MHz	333 MHz	5.0
66.6 MHz	366 MHz	5.5
100 MHz	350 MHz	3.5
100 MHz	400 MHz	4.0
100 MHz	450 MHz	4.5
100 MHz	500 MHz	5.0
100 MHz	600 MHz	6.0
100 MHz	750 MHz	7.5
100 MHz	850 MHz	8.5

Figure 4.1 Block Diagram of the EUT



5 CONDUCTED EMISSION DATA

5.1 Test Procedure

The initial step in collecting conducted emission data is a Rohde & Schwarz Test Receiver (ESH10). During first scan all data in peak mode is measured, then all significant peaks are explored either in quasi-peak mode or in average mode. In case of low noise (no peak value reaches the quasi peak limit), only average checks are done.

5.2 Measured Data

The conducted emission was measured the following way:

1. Peak noise on L
2. Peak noise on N

During the emission measurement the printers are supplied with power via a second LISN, the monitor was powered both, via the system unit or separately.

The worst case results of the measurement is given next:

Minebea PSU:

- a) video resolution 1024 x 768/100 Hz, monitor power via EUT
- b) video resolution 1024 x 768/100 Hz, monitor power from peripheral device LISN

Judgement: Passed by

	Frequency [MHz]	Measured [dB(μV)]	Kind of value	Limit [dB(μV)]	Configuration
neutral	0.222	48.30	QP	63.0	a

Judgement: Passed by

	Frequency [MHz]	Measured [dB(μV)]	Kind of value	Limit [dB(μV)]	Configuration
phase	1.734	43.60	QP	56.0	a
phase	1.836	43.30	QP	56.0	a
neutral	0.222	47.70	AV	53.0	a
phase	1.734	38.50	AV	46.0	a
phase	1.836	38.10	AV	46.0	a
neutral	0.222	48.30	QP	63.0	b
phase	1.734	43.30	QP	56.0	b
phase	1.836	43.00	QP	56.0	b
neutral	0.222	47.60	AV	53.0	b
phase	1.734	38.30	AV	46.0	b
phase	1.836	38.10	AV	46.0	b

AV: average

QP: quasi peak

Newton PSU:

- a) video resolution 1024 x 768/100 Hz, monitor power via EUT
- b) video resolution 1024 x 768/100 Hz, monitor power from peripheral device LISN

Judgement: Passed by

	Frequency [MHz]	Measured [dB(μV)]	Kind of value	Limit [dB(μV)]	Configuration
neutral	0.228	44.20	QP	63.0	a
phase	0.588	37.60	QP	56.0	a

	Frequency [MHz]	Measured [dB(μV)]	Kind of value	Limit [dB(μV)]	Configuration
neutral	3.774	37.30	QP	56.0	a
phase	0.204	42.90	AV	53.0	a
phase	0.234	40.50	AV	52.0	a
phase	0.558	33.60	QP	46.0	a
phase	0.228	47.00	QP	63.0	b
phase	0.564	41.10	QP	56.0	b
neutral	3.828	37.90	QP	56.0	b
phase	0.228	42.10	AV	53.0	b
phase	0.558	34.50	AV	46.0	b
neutral	4.236	32.70	AV	46.0	b

AV: average
QP: quasi peak

Test Personnel:

Tester Signature: _____ Date: _____

Printed Name: C. Brummer

Test Personnel:

Tester Signature: _____ Date: _____

Printed Name: M. Rothtauscher



Fujitsu Siemens Computers
Personal Computer Scenic MT8

FCC Identifier:
HSSSCENIC8501

Date: Oct. 20, 2000

Page:
24/41

Measurement Protocols: see attached file

Minebea PSU:

100 MHz clock/Intel Pentium III 850 MHz
video resolution 1024 x 768/100 Hz
monitor power via EUT

100 MHz clock/Intel Pentium III 850 MHz
video resolution 1024 x 768/100 Hz
monitor power from peripheral device LISN

Newton PSU:

100 MHz clock/Intel Pentium III 850 MHz
video resolution 1024 x 768/100 Hz
monitor power via EUT

100 MHz clock/Intel Pentium III 850 MHz
video resolution 1024 x 768/100 Hz
monitor power from peripheral device LISN

5.3 Referenced Rules Sections

N/A

5.4 Test Instrumentation Used, Conducted Measurement

Type	Manufacturer/ Model No.	Serial No.	Last Cal.	Cal. Interval
Receiver	ESHS10 Rohde&Schwarz	842884/011	May 00	12 months
LISN	ESH2-Z5 Rohde&Schwarz	871884/004	May 00	12 months
LISN	ESH3-Z5 Rohde&Schwarz	883650/027	May 00	12 months
Pulse limiter	ESH3-Z2 Rohde&Schwarz	---	May 00	12 months

6 RADIATED EMISSION DATA

6.1 Test Procedure

The radiated emission was measured in two parts:

1. in the frequency range from 30 MHz to 1000 MHz. The bandwidth of the EMI-receiver was set to 120 kHz and the detector was set to peak. During prescan all data in peak mode are accumulated automatically. At final measurement the detector was set to CISPR quasi peak and values above the acceptance line were verified automatically.
2. in the frequency range from 1000 MHz to 5000 MHz. The bandwidth of the EMI-receiver was set to 1 MHz and the detector was set to peak. During prescan all data in peak mode are accumulated automatically. At final measurement the detector was set to average and values above the acceptance line were verified automatically.

Both tests were performed in a semi anechoic chamber, measurements below 1000 MHz in a distance of 10 meters between antenna and EUT, above 1 GHz with a distance of 3 meters between antenna and EUT. During tests the EUT was turned 360° and the actual used receiving antenna was moved from 1 to 4 meters and the antenna polarisation was changed from horizontal to vertical for finding the maximum levels of emission.

For each range one antenna for the whole span was used

1. 30 MHz to 1000 MHz: log.-per antenna
2. 1000 MHz to 5000 MHz: rigid tensor antenna

After automatic tests during manual verification the cables and the equipment were placed and moved within the range of position in order to find the maximum of emission.

6.2 Measured Data

The EUT was measured with the Processor Pentium III 850 MHz in video mode 1024 x 768/100 Hz. The test results below reflect the worst case with:

Minebea PSU:

a) 100 MHz clock/Intel Pentium III 850 MHz,
video resolution 1024 x 768/100 Hz

Part 1: frequency range 30 MHz - 1000 MHz:

Judgement: Passed by

Frequency [MHz]	Level* [dB(μV/m)]	10 Meter Limit [dB(μV/m)]	Exceeding [dB]	Ant Pol	Height in [m]	Angle in deg
190.20000	24.90	30.000	-5.1	hor	4.00	90.000
198.66000	24.80	30.000	-5.2	hor	4.00	239.000
330.99000	30.30	37.000	-6.7	hor	2.80	300.000
432.03000	31.60	37.000	-5.4	hor	2.20	90.000
618.75000	33.90	37.000	-3.1	hor	1.00	300.000
800.64000	30.10	37.000	-6.9	ver	2.80	270.000

all levels are quasi-peak levels

*The correction factor is considered automatically by the test receiver. A table of correction factors is listed in paragraph 7.4.

Part 2: frequency range 1 GHz - 5 GHz:

Judgement: Passed by

Frequency [MHz]	Level* [dB(μV/m)]	Limit [dB(μV/m)]	Margin [dB]	Exceed Mark	Height [cm]	Azimuth [deg]	Ant Pol
1096.90000	33.20	53.9	20.7		100.00	330.00	ver
1267.60000	29.30	53.9	24.6		100.00	29.00	ver

Frequency [MHz]	Level* [dB(μV/m)]	Limit [dB(μV/m)]	Margin [dB]	Exceed Mark	Height [cm]	Azimuth [deg]	Ant Pol
1327.00000	30.10	53.9	23.8		100.00	29.00	hor
1687.90000	29.20	53.9	24.7		200.00	0.00	hor
4129.90000	31.80	53.9	22.1		100.00	300.00	hor
4860.10000	34.00	53.9	19.9		300.00	150.00	hor

all levels are average levels

*The correction factor is considered automatically by the test receiver. A table of correction factors is listed in paragraph 7.4.

Newton PSU

b) 100 MHz clock/Intel Pentium III 850 MHz
video resolution 1024 x 768/100 Hz

Part 1: frequency range 30 MHz - 1000 MHz:

Judgement: Passed by

Frequency [MHz]	Level* [dB(μV/m)]	10 Meter Limit [dB(μV/m)]	Exceeding [dB]	Ant Pol	Height in [m]	Angle in deg
121.68000	20.40	30.000	-9.6	hor	4.00	90.000
432.06000	31.40	37.000	-5.6	hor	2.20	300.000
480.03000	29.60	37.000	-7.4	hor	1.60	330.000
575.61000	27.80	37.000	-9.2	hor	1.60	119.000
647.31000	31.70	37.000	-5.3	ver	4.00	270.000
794.28000	29.20	37.000	-7.8	ver	1.60	180.000

all levels are quasi-peak levels

*The correction factor is considered automatically by the test receiver. A table of correction factors is listed in paragraph 7.4.

Part 2: frequency range 1 GHz - 5 GHz:

Judgement: Passed by

Frequency [MHz]	Level* [dB(µV/m)]	Limit [dB(µV/m)]	Margin [dB]	Exceed Mark	Height [cm]	Azimuth [deg]	Ant Pol
1130.50000	29.40	53.9	24.5		200.00	330.00	hor
1195.90000	25.60	53.9	28.3		100.00	119.00	hor
1305.70000	25.90	53.9	28.0		300.00	210.00	hor
1694.50000	30.20	53.9	23.7		100.00	210.00	hor
4069.60000	31.60	53.9	22.3		200.00	0.00	ver
4965.70000	34.10	53.9	19.8		100.00	270.00	hor

all levels are average levels

*The correction factor is considered automatically by the test receiver. A table of correction factors is listed in paragraph 7.4.

Test Personnel:

Tester Signature: _____ Date: _____

Printed Name: M. Rothtauscher

Test Personnel:

Tester Signature: _____ Date: _____

Printed Name: A. Luck

Measurement Protocols: see attached files

Minebea PSU:

Frequency range 30 MHz - 1 GHz:

100 MHz clock/Intel Pentium III 850 MHz

video resolution 1024 x 768/100 Hz

Frequency range 1 GHz - 5 GHz:

100 MHz clock/Intel Pentium III 850 MHz

video resolution 1024 x 768/100 Hz

Newton PSU:

Frequency range 30 MHz - 1 GHz:

100 MHz clock/Intel Pentium III 850 MHz

video resolution 1024 x 768/100 Hz

Frequency range 1 GHz - 5 GHz:

100 MHz clock/Intel Pentium III 850 MHz

video resolution 1024 x 768/100 Hz

6.3 Referenced Rules Sections

N/A

6.4 Test Instrumentation Used, Radiated Measurement

Type	Manufacturer/ Model No.	Serial No.	Last Cal.	Cal. Interval
Receiver	ESMI Rohde&Schwarz	840607/006	May 00	15 months
Antenna	CBL 6111 Chase	1345	May 99	12 months
Antenna	CBL 6112 Chase	2041	Aug 99	15 months
Active Ridged antenna	Tensor 4105 Rohde&Schwarz	2063	Dec 99	15 months

6.5 Field Strength Calculation

The field strength is calculated by adding the Antenna Factor and Cable Factor automatically to the measured value. The display of the Receiver shows the corrected value. The complete table of correction factors is given on next page. The basic equation with a sample calculation is as follows:

$$FS = RA + AF + CF$$

where FS = Field Strength

AF = Antenna Factor (incl. Preamplifier factor)

CF = Cable Attenuation Factor

Assume a receiver reading of 28,5 dB μ V is obtained. The Antenna Factor of 10,5 and a Cable Factor of 1,3 is added, giving a field strength of 40,3 dB μ V/m.

$$FS = 28,5 + 10,5 + 1,3 = 40,3 \text{ dB}\mu\text{V/m}$$

The 40,3 dB μ V/m value can be mathematically converted to its corresponding level in μ V/m.

Level in μ V/m =
Common Antilogarithm [(40,3 dB μ V/m)/20] =

103,5 μ V/m

6.6 Table of Correction Factors

Frequency range: 30 MHz to 1000 MHz (Antenna CBL6112)

Frequency [MHz]	Correction Bilog Antenna [dB]	Correction Cable [dB]	Correction Antenna + Cable [dB]
30.0	17.80	0.65	18.45
35.0	15.10	0.67	15.77
40.0	12.40	0.68	13.08
45.0	9.80	0.73	10.53
50.0	7.70	0.74	8.44
55.0	6.20	0.82	7.02
60.0	5.10	0.84	5.94
70.0	5.00	0.90	5.90
80.0	6.60	0.95	7.55
90.0	8.50	0.99	9.49
100.0	10.30	1.10	11.40
120.0	11.40	1.14	12.54
140.0	10.40	1.27	11.67
160.0	9.40	1.35	10.75
180.0	8.50	1.45	9.95
200.0	9.10	1.51	10.61
250.0	11.80	1.71	13.51
300.0	13.00	1.84	14.84
350.0	14.10	2.00	16.10
400.0	16.00	2.18	18.18
450.0	16.30	2.35	18.65
500.0	17.10	2.43	19.53

Frequency [MHz]	Correction Bilog Antenna [dB]	Correction Cable [dB]	Correction Antenna + Cable [dB]
550.0	18.80	2.62	21.41
600.0	18.60	2.73	21.33
650.0	19.00	2.88	21.88
700.0	19.10	2.91	22.01
750.0	19.80	3.01	22.81
800.0	19.80	3.21	23.01
850.0	20.40	3.32	23.72
900.0	20.50	3.40	23.90
950.0	20.80	3.49	24.29
1000.0	21.10	3.69	24.79

Frequency range: 1 GHz to 5 GHz

Frequency [GHz]	Correction Tensor Antenna with Pre- amplifier [dB]	Correction Cable [dB]	Correction Antenna + Cable [dB]
1.0	5.70	1.62	7.32
1.1	4.80	1.68	6.48
1.2	5.10	1.75	6.85
1.3	5.00	1.80	6.80
1.4	5.10	1.96	7.06
1.5	5.90	2.00	7.90
1.6	5.60	2.15	7.75
1.7	6.70	2.30	9.00
1.8	6.60	2.32	8.92
1.9	5.90	2.35	8.25
2.0	7.20	2.44	9.64
2.1	7.30	2.62	9.92
2.2	7.40	2.75	10.15
2.3	8.40	2.70	11.10
2.4	8.00	2.69	10.69
2.5	9.30	2.65	11.95
2.6	8.70	2.75	11.45
2.7	8.70	2.92	11.62
2.8	9.00	2.98	11.98
2.9	8.60	3.10	11.70
3.0	9.50	3.12	12.62
3.1	9.20	2.37	11.57
3.2	8.60	2.40	11.00

Frequency [GHz]	Correction Tensor Antenna with Pre- amplifier [dB]	Correction Cable [dB]	Correction Antenna + Cable [dB]
3.3	8.70	2.42	11.12
3.4	9.70	2.43	12.13
3.5	9.70	2.46	12.16
3.6	10.40	2.43	12.83
3.7	10.80	2.45	13.25
3.8	11.50	2.47	13.97
3.9	11.90	2.49	14.39
4.0	10.90	2.46	13.36
4.1	10.10	2.48	12.58
4.2	8.80	2.49	11.29
4.3	8.70	2.51	11.21
4.4	8.50	2.53	11.03
4.5	8.70	2.54	11.24
4.6	9.50	2.57	12.07
4.7	10.10	2.57	12.67
4.8	11.10	2.59	13.69
4.9	11.50	2.60	14.10
5.0	11.60	2.62	14.22

7 Conducted And Radiated Emission Measurement Photos: see attached files

7.1 Test set-up, conducted emission, front side view

7.2 Test set-up, conducted emission, rear side view

7.3 Test set-up, radiated emission, front side view

7.4 Test set-up, radiated emission, rear side view

8 External Photos of EUT

see original grant, date: Mar. 10, 1999



**Fujitsu Siemens Computers
Personal Computer Scenic MT8**

FCC Identifier:
HSSSCENIC8501

Date: **Oct. 20, 2000**

Page:
39/41

9 Internal Photos of EUT: see attached files

9.1 Power supply Minebea, closed case, top side view

9.2 Power supply Minebea, opened case, inside view

9.3 Power supply Minebea, rear side view

9.4 Power supply Newton, closed case, top side view

9.5 Power supply Newton, opened case, inside view

9.6 Power supply Newton, rear side view

Original grant, dated Mar. 10, 1999

First class II change, dated: Aug. 18, 1999

Second class II change, dated: Dec. 14, 1999

Third class II change, dated: May 15, 2000

10 User Manual: see attached file

see third class II change, dated: May 15, 2000.