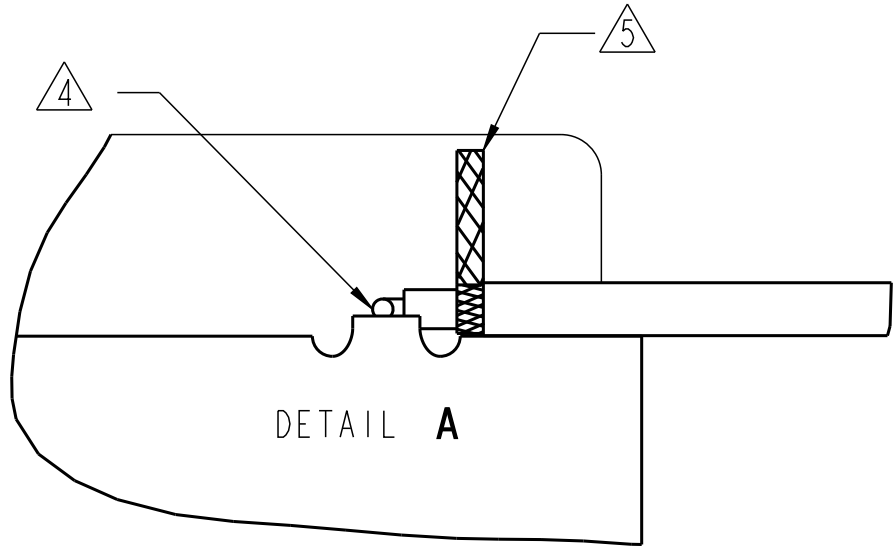
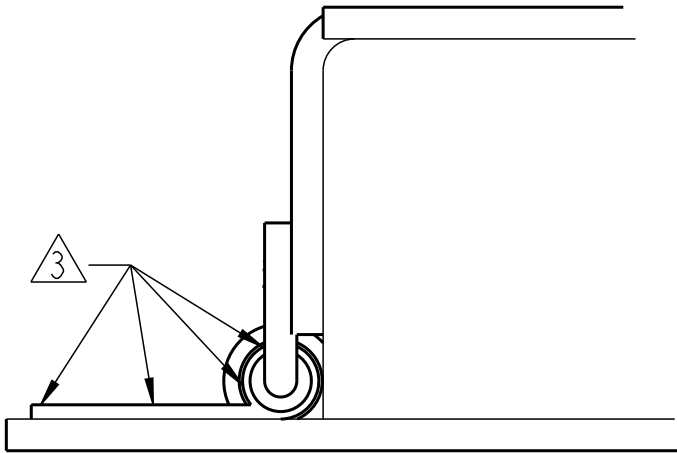


ASSEMBLY INSTRUCTIONS

1. ROHS COMPLIANT
2. MANUAL SOLDER OPERATIONS MUST BE PREFORMED WITH LEAD FREE SOLDER WIRE PER IPC-7711 AND MEET IPC-610 ACCEPTABILITY FOR ELECTRONIC ASSEMBLIES
3. SOLDER NEEDS TO ATTACH THE ENTIRE LENGTH OF MESH WIRE TO THE ANTENNA BASE, AND SOLDER SHOULD WICK AROUND AND INTO LARGE WIRE PROTECTIVE SLEAVE.
4. SOLDER NEEDS TO COVER INNER WIRE ALONG ANTENNA TAB AREA, AND NEITHER SOLDER OR INNER WIRE ON TAB SHOULD MAKE CONTACT WITH THE ANTENNA BASEPLATE OR MESH WIRE.
5. TRIM BRAID IF EXCESS GOES OVER EDGE OF ANTENNA.



<div><div></div><div></div><div></div></div>					<div><div></div><div></div><div></div></div>		FIRST USED ON		DWN. S. MCPHERSON 11/05/31		<div><div><div></div></div><div><div></div></div></div>	
MAT'L					MAT'L SPEC.		DIMENSIONS ARE IN:		THIRD ANGLE PROJECTION			
OR							<div><div></div><div></div></div>		DES. S. MCPHERSON		ENVIRONMENTAL & COMBUSTION CONTROLS	
							<div><div></div><div></div></div>		NEXT ASS'Y		GOLDEN VALLEY, MN	
									REFERENCE		NAME	
											ANTENNA ASSEMBLY	
											DRAWING NO.	
											50062832	
											REV. A	
A 7-14-11 0079452											SCALE 1:1	
REV. DATE E.O. REV. DATE E.O.											Sheet 1 of 1	
DIMENSIONS & TOLERANCES PER ANSI Y14.5M-1994 & ECC ENGINEERING STANDARDS											PRO-E REV19	