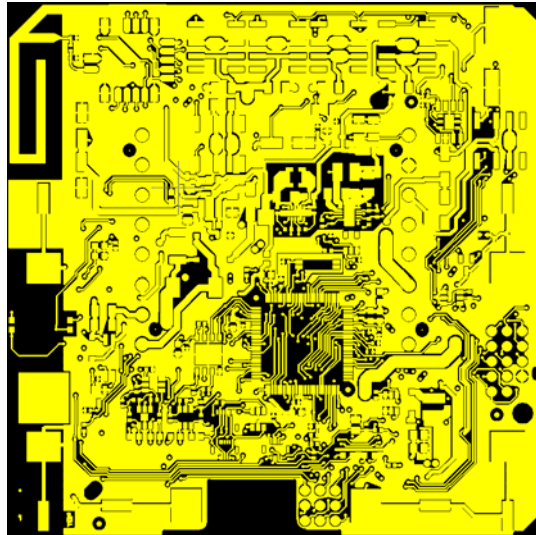


Antenna Description

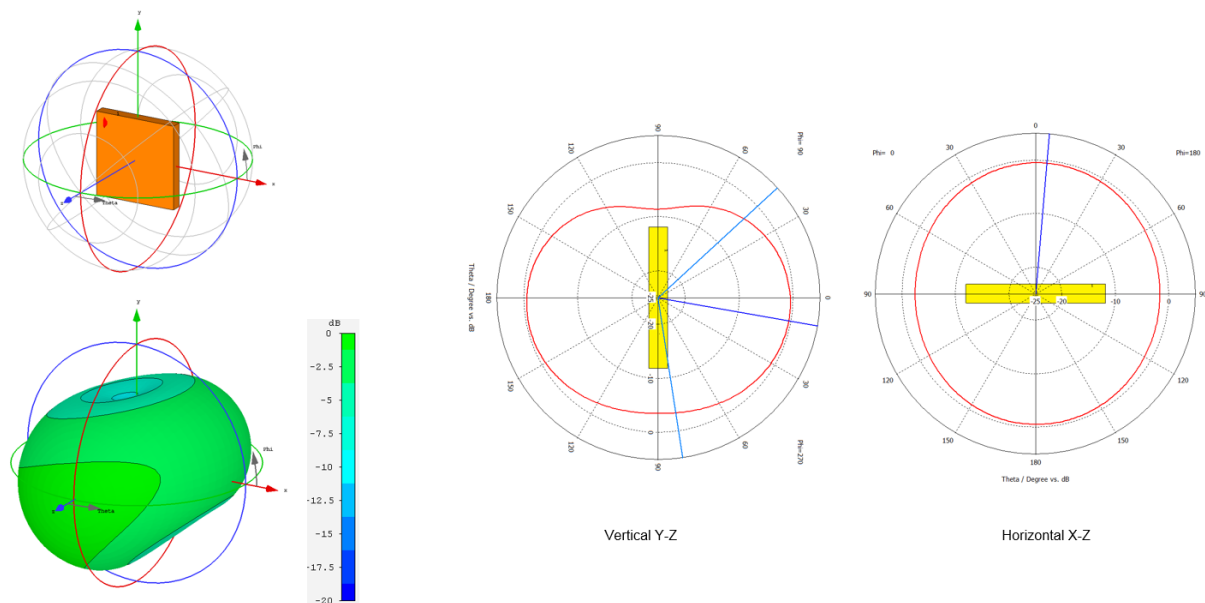
The TH6320ZW01 uses one PIFA (**P**rinted **I**nverted **F** – **A**ntenna), which is etched on the PWB. Since the antenna is permanently attached PWB type, it meets the requirements of CFR 15.203.

For proper function the layout including ground plane keep-out and vias follows high frequency design rules.

Due to antenna input impedance is nearly 50Ω , matching is done just by two capacitors.



Antenna Performance – Antenna Gain at 915 MHz



Simulated antenna gain at 915MHz is

$$\begin{aligned} \text{GAIN}_{\text{MAX}} &= -0.5\text{dBi} \\ \text{GAIN}_{\text{AVG}} &= -2.6\text{dBi} \end{aligned}$$