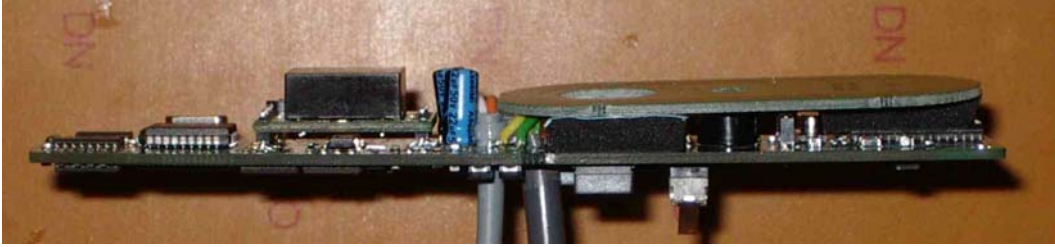


ANTENNA BOARD COMPONENT SIDE



ANTENNA BOARD FOIL SIDE



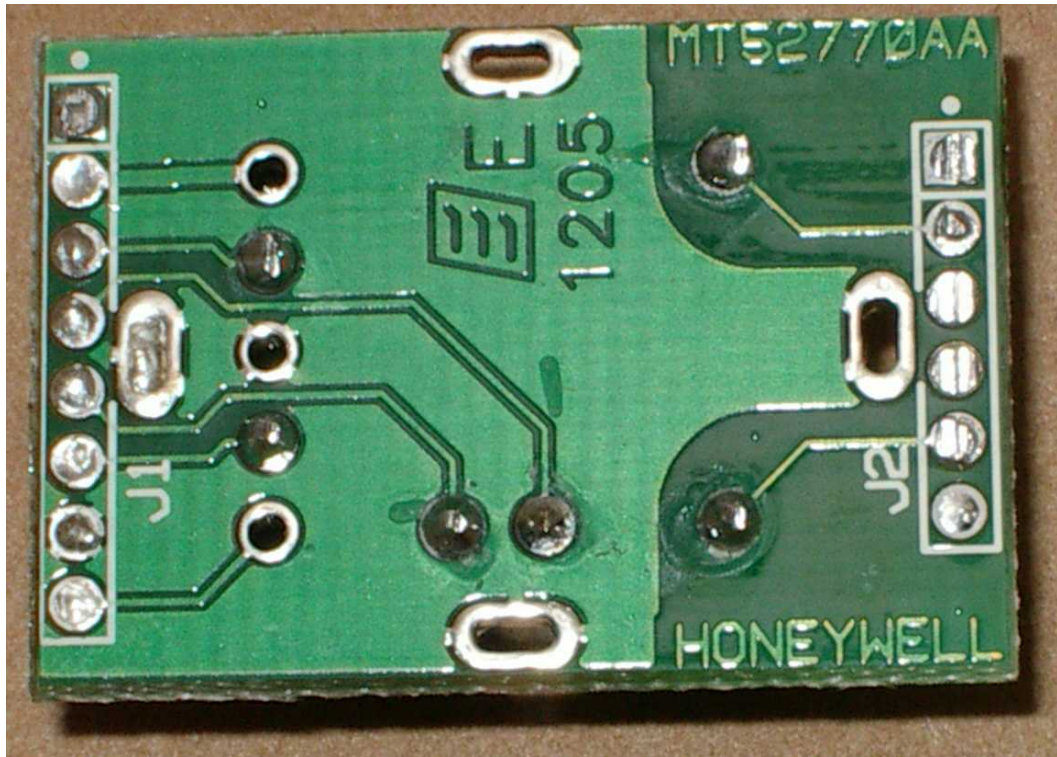
ASSEMBLED BOARD VIEW 1



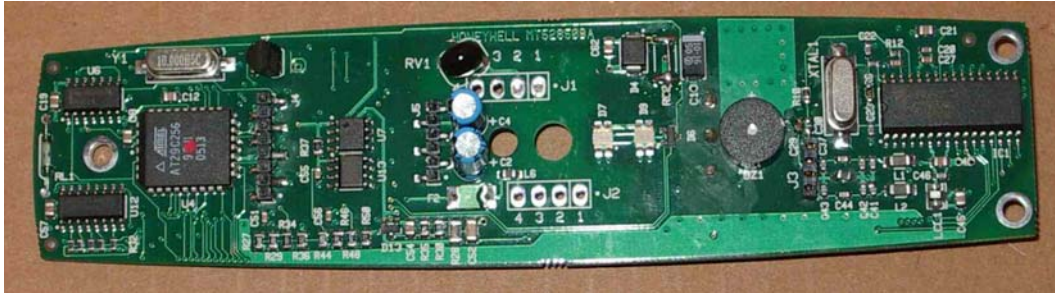
ASSEMBLED BOARD VIEW 2



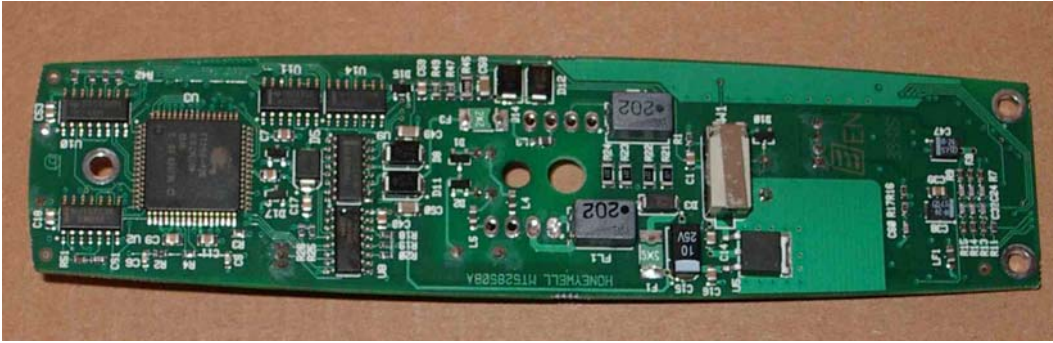
FTT10 SUPPORT BOARD COMPONENT SIDE



FTT10 SUPPORT BOARD FOIL SIDE



MAIN BOARD SIDE 1



MAIN BOARD SIDE 2