

ATTACHMENTS

EUT PHOTOGRAPHS







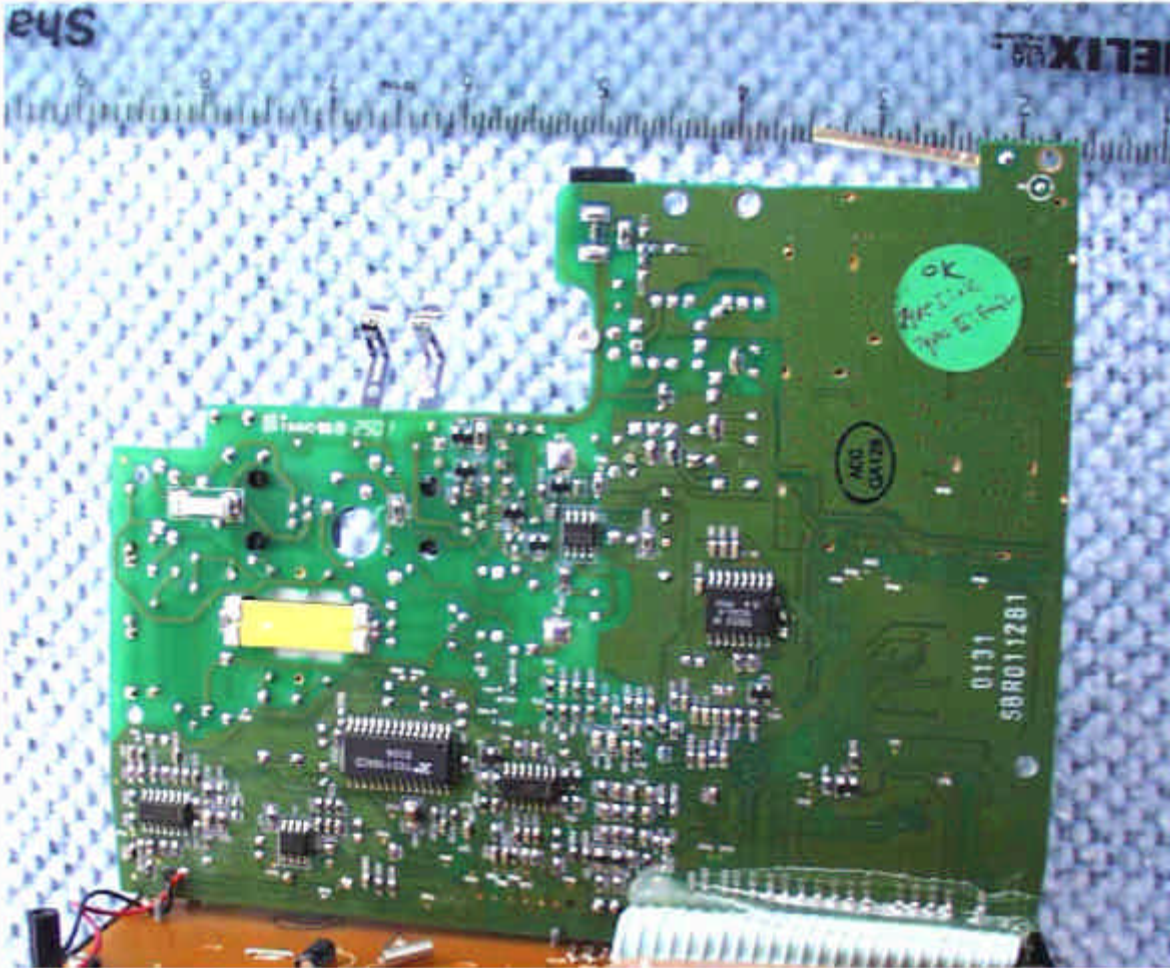










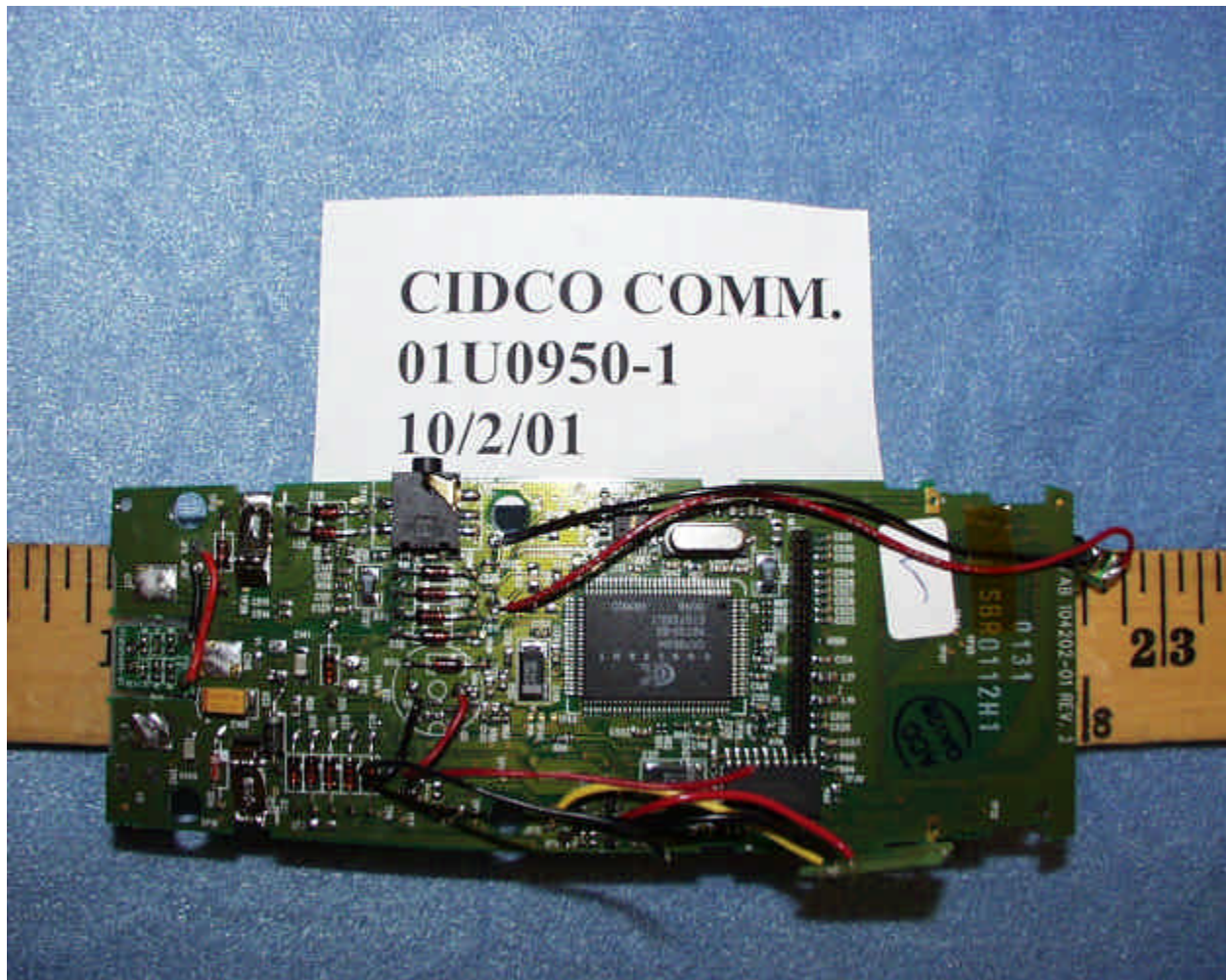














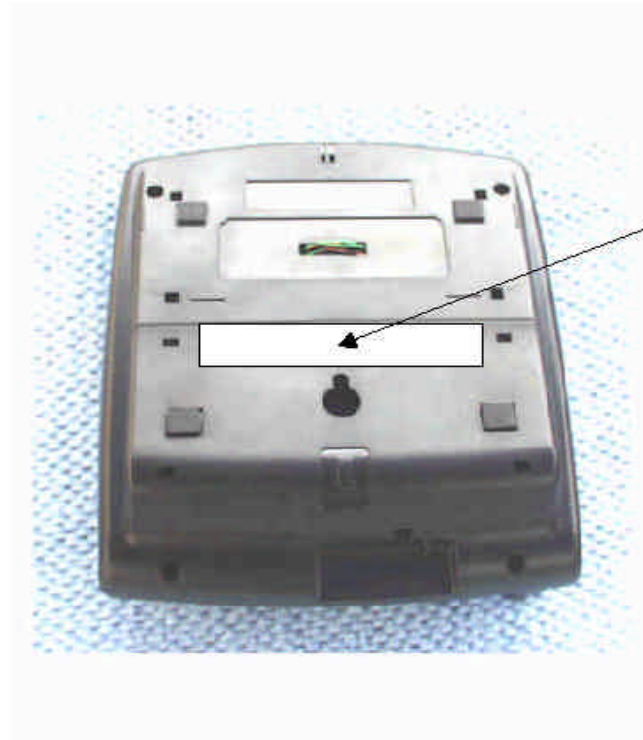




PROPOSED FCC ID LABEL AND LOCATION**CIDCO COMMUNICATIONS INC.****FCC ID: HOLD271**

This device complies with Part 15 of the FCC Rules. Operation is subject to the following two conditions: (1) this device may not cause harmful interference, and (2) this device must accept any interference received, including interference that may cause undesired operation.

Privacy of communications may not be ensured when using this phone



FCC ID LABEL

THEORY OF OPERATION

BLOCK DIAGRAM & SCHEMATIC DIAGRAM

USER'S MANUAL

PROCESSING GAIN

CODE LETTER