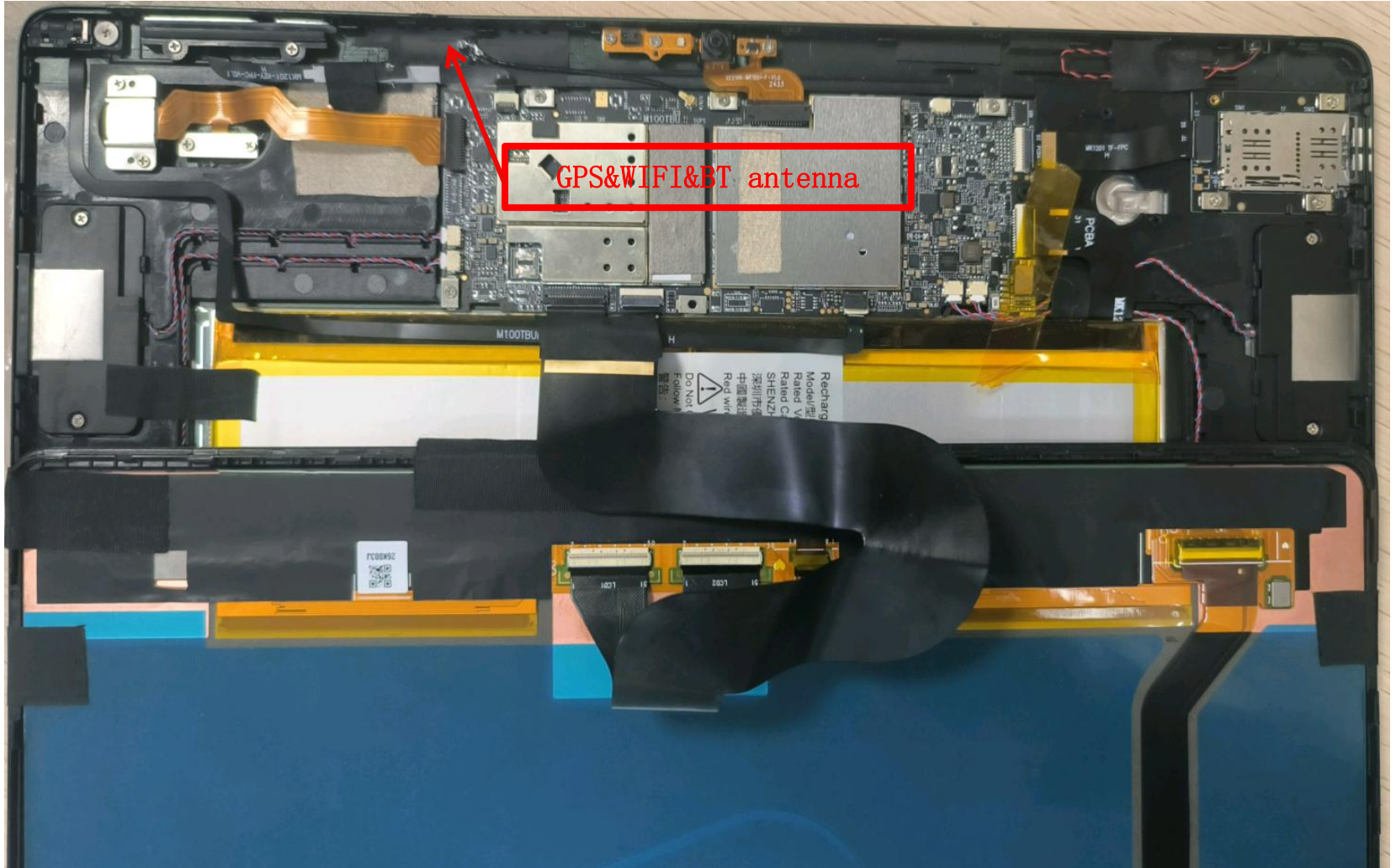
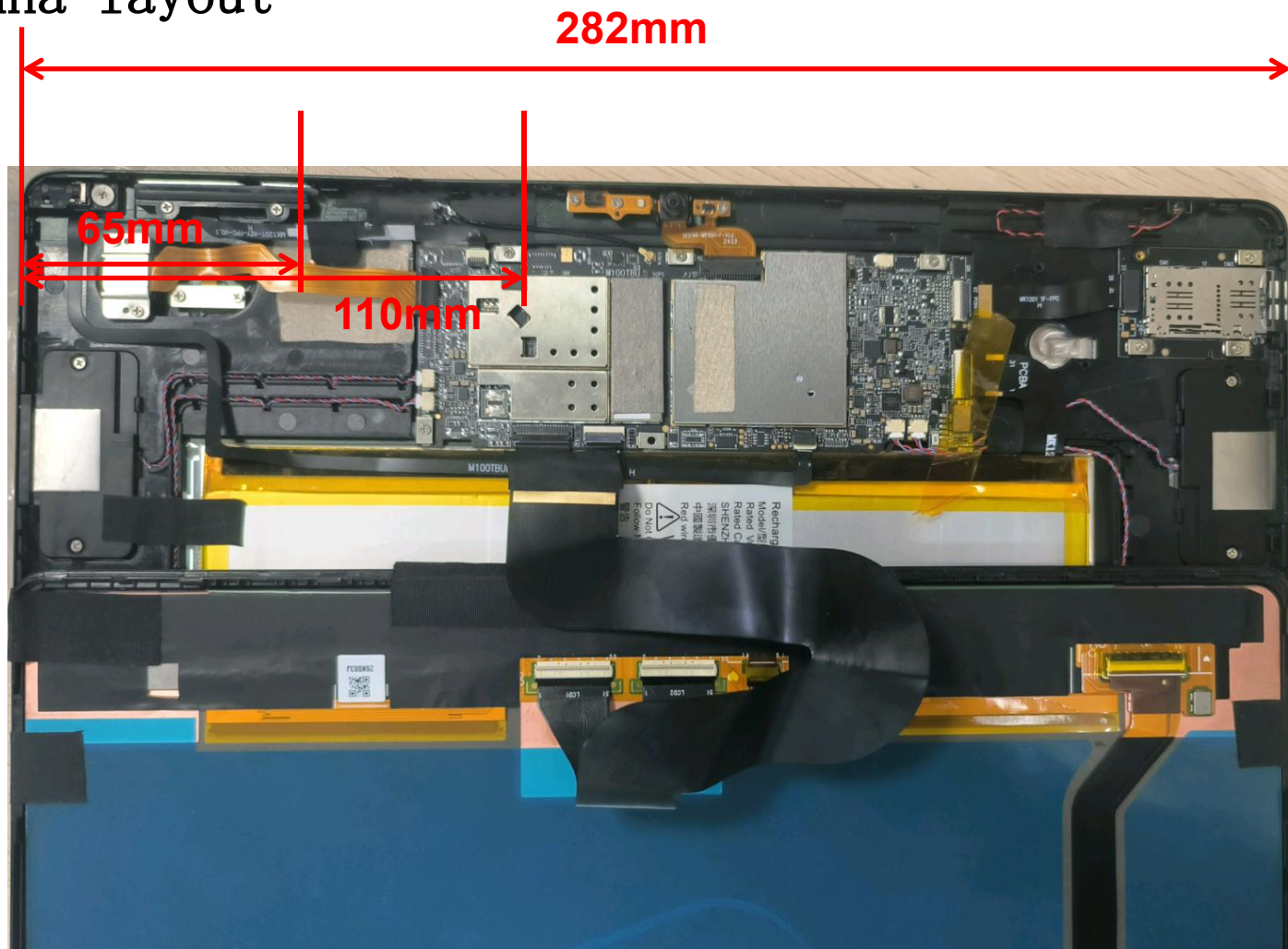


## Antenna layout





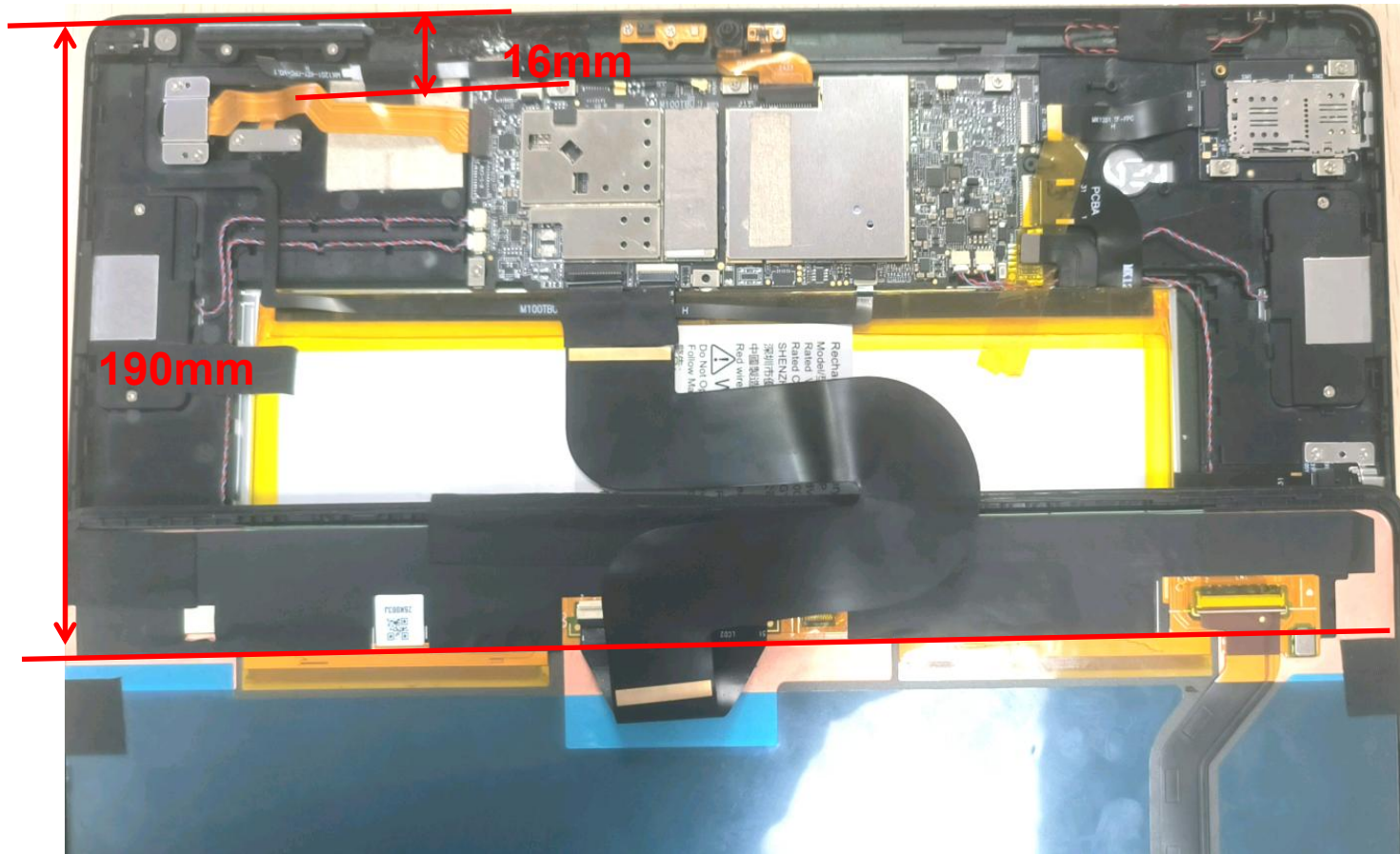
## Antenna layout



**Manual measurement (error).**



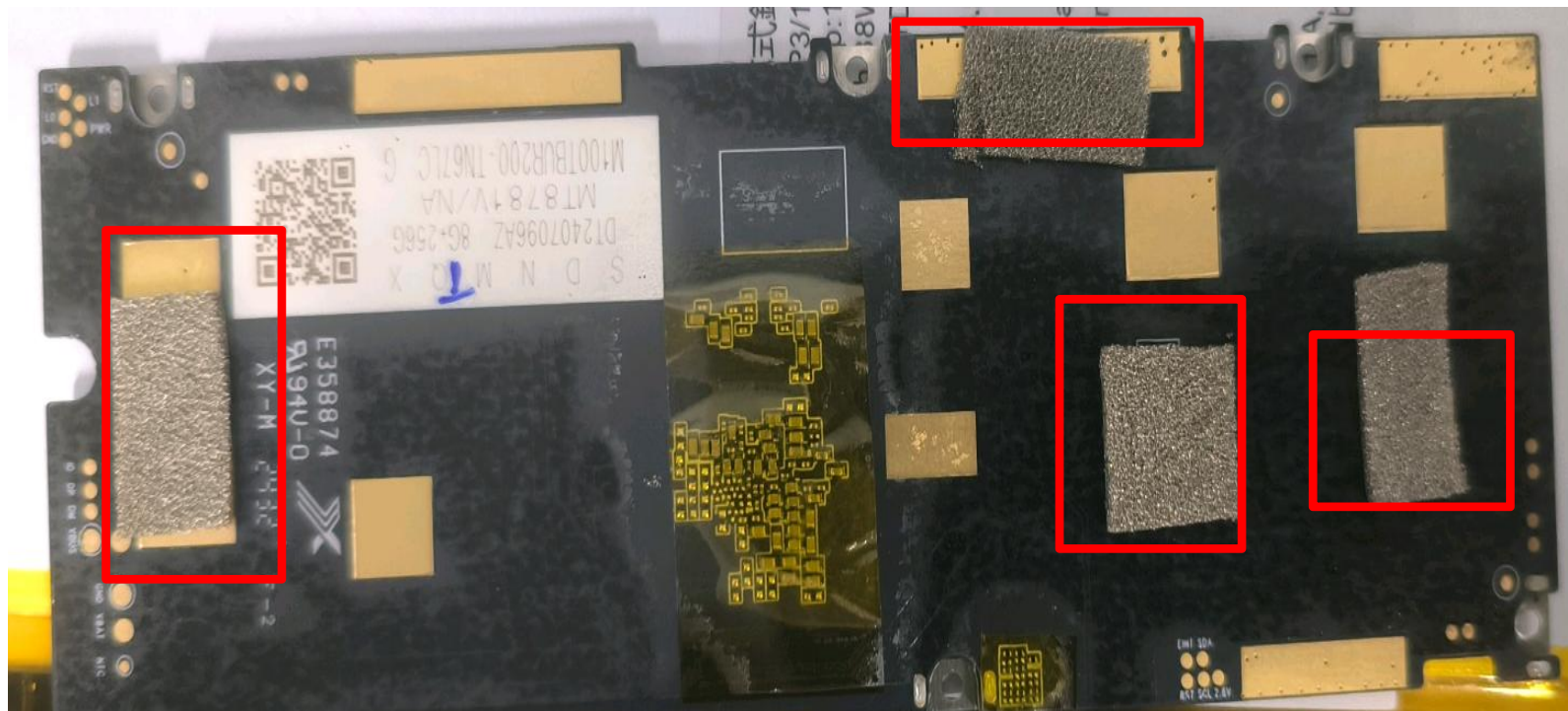
## Antenna layout



**Manual measurement without auxiliary materials, (error exists).**



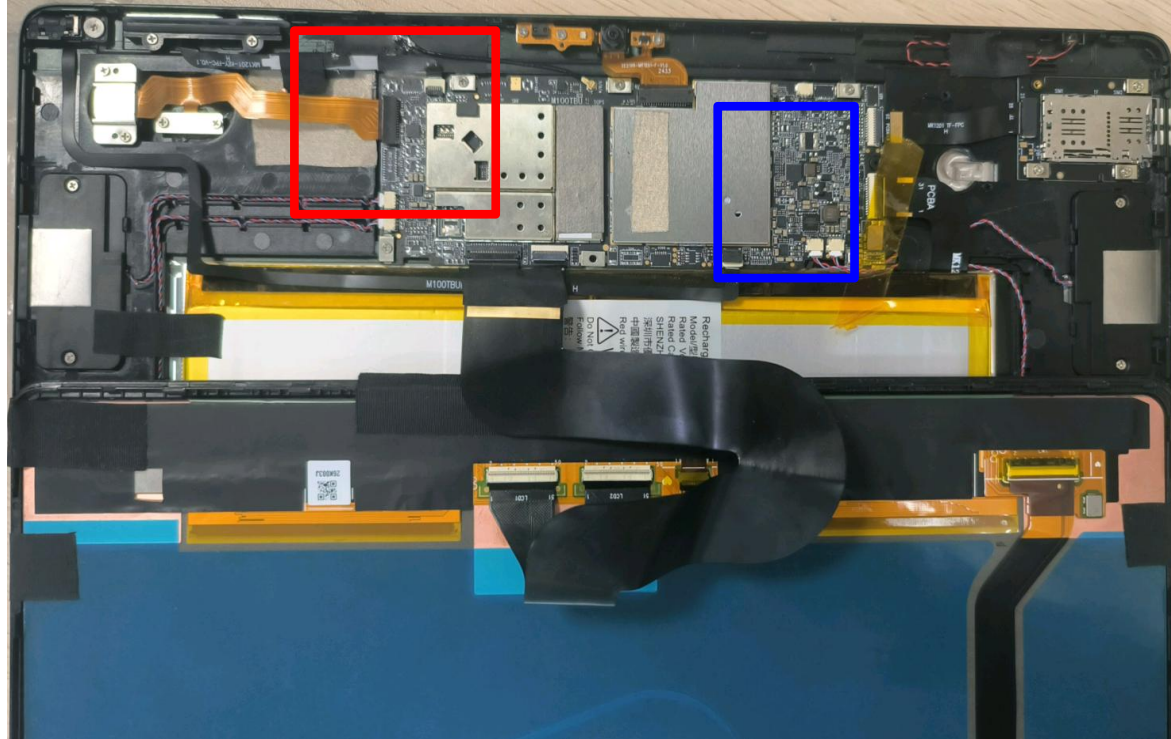
## Environmental handling and assembly instructions



1. On the back of the main board, the conductive sponge at the corresponding position of the red frame is grounded to the radium carving position of the metal back shell;



## Environmental handling and assembly instructions



2. On the front side of the machine, corresponding to the position of the red frame, attach conductive cloth to the position of the antenna exposed copper (increase the antenna reference ground, reduce the interference effect);
3. On the front of the motherboard, the shielding cover of the motherboard in the blue frame is connected with a conductive cloth to form a shield (the component position is insulated and then shielded).