

WaltzOne HWG6507

All-in-One Home Security Camera/Gateway

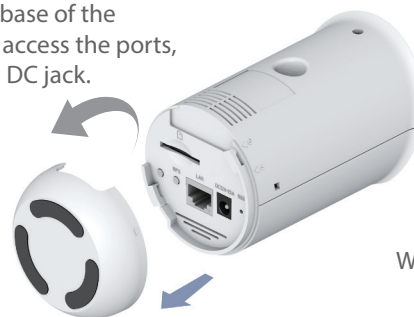
Quick Start Guide



Monitor your home or office from anywhere using any iOS or Android smartphone or tablet.

1

Remove the base of the WaltzOne to access the ports, buttons, and DC jack.



WPS button
RJ-45 port



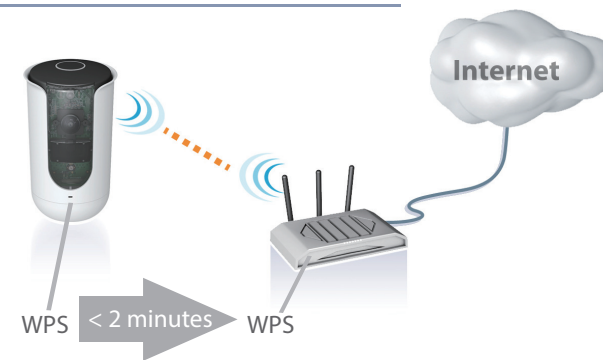
Connect the AC adapter to the WaltzOne and to an AC outlet.

2

Connect to your home Internet router.

Wireless: To connect the WaltzOne using a Wi-Fi connection, press the WPS button on the base of the unit, and then within two minutes, press the WPS button on your Internet router.

(Optional) Wired LAN: Use Ethernet cable to connect the WaltzOne RJ-45 port to your home Internet router.



What's in the box?



WaltzOne



AC Adapter



This Guide



Ethernet Cable



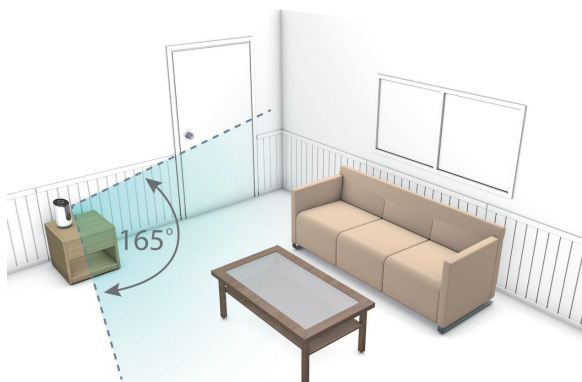
Unique identification QR code.



Note: For detailed information on WaltzOne installation and other features, refer to the *User Guide* on the website.

3

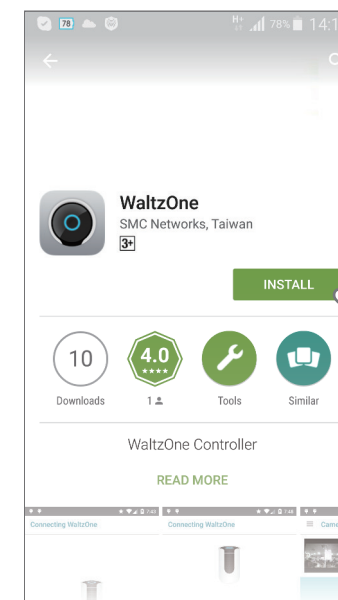
Place the WaltzOne on a flat surface with a clear view of the area you want to monitor.



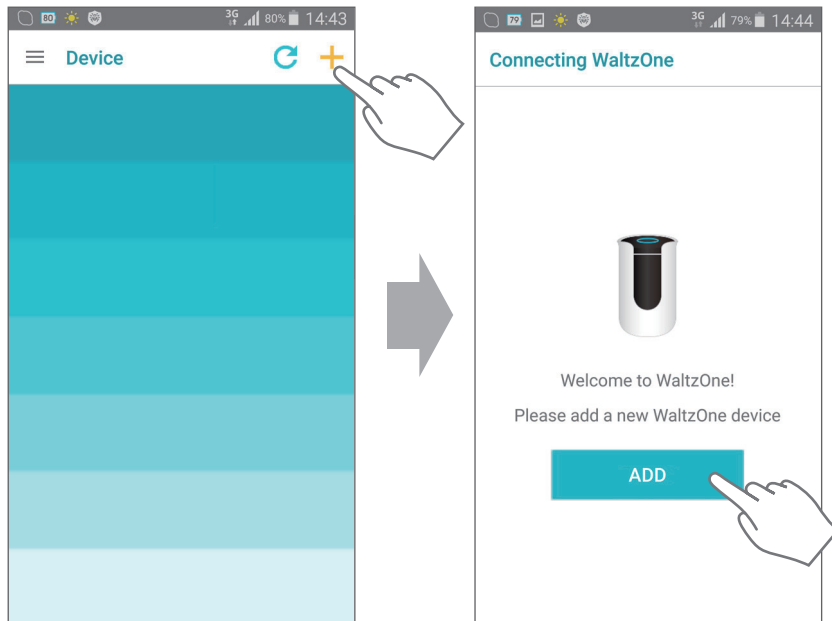
Note: The WaltzOne also automatically pairs with your other home security door and window sensors.

4

From your smartphone or tablet, download the **WaltzOne App** from Google Play or Apple iTunes.



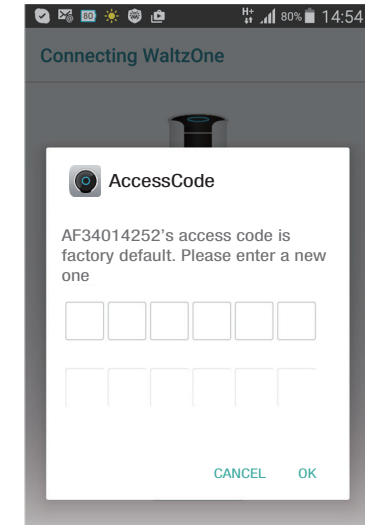
5 Add the WaltzOne by touching “+” and then “Add”.



6 Scan the identification QR code supplied with the device.

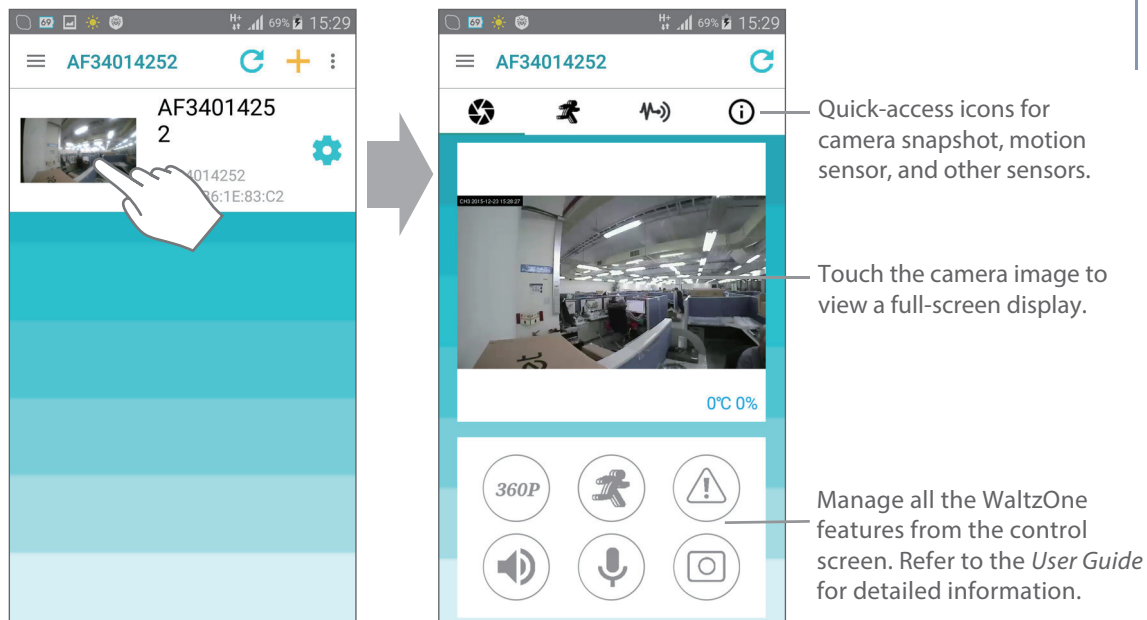


7 When the WaltzOne is initialized and connected, enter your own 6-digit access code to become “owner” of the device.

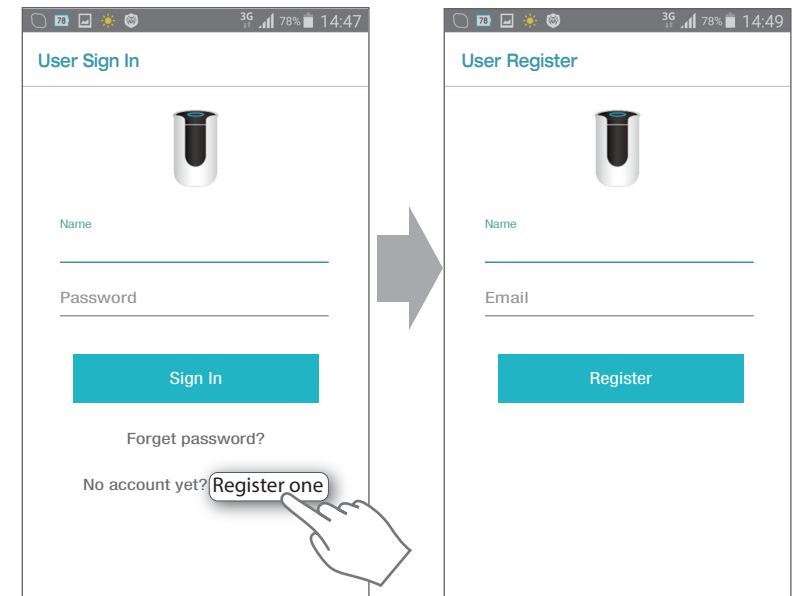


Note: Be sure to keep a record of your access code in a safe place.

8 From the device list, touch the WaltzOne entry to access its control screen and view the live camera display.



9 Register an account for the WaltzOne. An account allows you to manage a number of devices from different smartphones or tablets. Touch “Sign In” on the app menu.



Technical Specification

Image Layout

Fisheye Len, Glass type

View Angle: H 165/ V90 degrees

F=2.0

Video Compression

H.264/Motion JPEG (MJPEG)

Resolution: 720 p (25 fps), 360 p (15 fps)

Audio Compression

2-way audio

Built-in omni directional microphone

Built-in 2 Watts speaker

Siren 85 db @ 3 m

Ethernet

IEEE 802.3 10/100 BASE-T

RJ-45 Connector

WiFi

802.11 b/g/n @2.4GHz (2412~2462MHz Ch1~Ch11)

MIMO 2X2

WPS

ZigBee

IEEE 802.15.4 ZigBee @ 2.4GHz (2405~2475MHz)

Coordinator

HA 1.2 or later version

AES 128 bits encryption

Built-in Sensors

PIR Sensor (5 m detection range)

Temperature Sensor

Humidity Sensor

I/O Port

Top push button with Multicolor status RGB LED

SDHC slot

RJ-45 connector

3 buttons inside: RESET, WPS, and Sensor pairing

DC Jack

Power

AC Input: 100~240 VAC @ 50~60 Hz

DC Output: 5 V/2 A

Cable 3M length

Mechanical

Size: 76.5 (D) * 132.5 (H) mm

Weight: 220 g

Temperature

Operating: 0°C ~ 45°C (32°F ~ 113°F)

Storage: -10°C to 50°C (14°F to 122°F)

Humidity

5% to 85% Non-Condensing

FCC Statement

Federal Communication Commission Interference Statement

This equipment has been tested and found to comply with the limits for a Class B digital device, pursuant to Part 15 of the FCC Rules. These limits are designed to provide reasonable protection against harmful interference in a residential installation. This equipment generates, uses and can radiate radio frequency energy and, if not installed and used in accordance with the instructions, may cause harmful interference to radio communications. However, there is no guarantee that interference will not occur in a particular installation. If this equipment does cause harmful interference to radio or television reception, which can be determined by turning the equipment off and on, the user is encouraged to try to correct the interference by one of the following measures:

- Reorient or relocate the receiving antenna.
- Increase the separation between the equipment and receiver.
- Connect the equipment into an outlet on a circuit different from that to which the receiver is connected.
- Consult the dealer or an experienced radio/TV technician for help.

FCC Caution: Any changes or modifications not expressly approved by the party responsible for compliance could void the user's authority to operate this equipment.

This device complies with Part 15 of the FCC Rules. Operation is subject to the following two conditions:
(1) This device may not cause harmful interference, and
(2) this device must accept any interference received, including interference that may cause undesired operation.

IMPORTANT NOTE:

FCC Radiation Exposure Statement:

This equipment complies with FCC radiation exposure limits set forth for an uncontrolled environment. This equipment should be installed and operated with minimum distance 20 cm between the radiator & your body.