



Tower Speaker with Bluetooth Wireless

User's Guide for Model ITB147B v1908-01

For the most up-to-date version of this User's Guide, go to www.iliveelectronics.com

Safety Instructions & Warnings

Important Safety Instructions

- Read these Instructions.
- Keep these Instructions.
- Heed all Warnings.
- Follow all instructions.
- Do not use this apparatus near water.
- Clean only with a dry cloth.
- Do not block any ventilation openings. Install in accordance with the manufacturer's instructions.
- Do not install near any heat sources such as radiators, heat registers, stoves, or other apparatus (including amplifiers) that produce heat.
- Do not defeat the safety purpose of the polarized or grounding - type plug. A polarized plug has two blades with one wider than the other. A grounding type plug has two blades and a third grounding prong. The wide blade or the third prong are provided for your safety. When the provided plug does not fit into your outlet, consult an electrician for replacement of the obsolete outlet.
- Protect the power cord from being walked on or pinched particularly at plugs, convenience receptacles, and the point where they exit from the apparatus.
- Only use attachments/accessories specified by the manufacturer.
- Unplug this apparatus during lightning storms or when unused for long periods of time.
- Refer all servicing to qualified service personnel. Servicing is required when the apparatus has been damaged in any way, such as power-supply cord or plug is damaged, liquid has been spilled or objects have fallen into the apparatus, the apparatus has been exposed to rain or moisture, does not operate normally, or has been dropped.
- Use only with a cart, stand, tripod, bracket, or table specified by the manufacturer, or sold with the apparatus. When a cart is used, use caution when moving the cart/apparatus combination to avoid injury from tip-over.



FCC Warnings

Warning: Changes or modifications to this unit not expressly approved by the party responsible for compliance could void the user's authority to operate the equipment.

NOTE: This equipment has been tested and found to comply with the limits for a Class B digital device, pursuant to Part 15 of the FCC Rules. These limits are designed to provide reasonable protection against harmful interference in a residential installation. This equipment generates, uses, and can radiate radio frequency energy and, if not installed and used in accordance with the instructions, may cause harmful interference to radio communications. However, there is no guarantee that interference will not occur in a particular installation. If this equipment does cause harmful interference to radio or television reception, which can be determined by turning the equipment off and on, the user is encouraged to try to correct the interference by one or more of the following measures:

- Reorient or relocate the receiving antenna.
- Increase the separation between the equipment and receiver.
- Connect the equipment into an outlet on a circuit different from that to which the receiver is connected.
- Consult the dealer or an experienced radio/TV technician for help.

Battery Warnings

- **WARNING:** Do not ingest the battery, Chemical Burn Hazard.
- If the remote control supplied with this product contains a coin/button cell battery and the coin/button cell battery is swallowed, it can cause severe internal burns in just 2 hours and can lead to death.
- Keep new and used batteries away from children. If the battery compartment does not close securely, stop using the product and keep it away from children.
- If you think batteries might have been swallowed or placed inside and part of the body, seek immediate medical attention.
- **CAUTION:** Danger of explosion if battery is incorrectly replaced. Replace only with the same or equivalent type.
- **WARNING:** There is a danger of explosion if you attempt to charge standard Alkaline batteries in the unit. Only use rechargeable NiMH batteries.
- Battery shall not be exposed to excessive heat such as sunshine, fire or the like.
- Do not mix old and new batteries.
- Completely replace all old batteries with new ones.
- Do not mix alkaline, standard (carbon-zinc), or rechargeable (ni-cad, ni-mh, etc) batteries.
- Batteries should be recycled or disposed of as per state and local guidelines.

Additional Warnings and Precautions

- **CAUTION:** TO PREVENT ELECTRIC SHOCK, MATCH WIDE BLADE OF PLUG TO WIDE SLOT, FULLY INSERT.
- Mains plug is used as disconnect device and it should remain readily operable during intended use. In order to disconnect the apparatus from the mains completely, the mains plug should be disconnected from the mains socket outlet completely.
- **CAUTION:** Use of controls or adjustments or performance of procedures other than those specified may result in hazardous radiation exposure.
- **WARNING:** Changes or modifications to this unit not expressly approved by the party responsible for compliance could void the user's authority to operate the equipment.
- **WARNING:** Use of this unit near fluorescent lighting may cause interference regarding use of the remote. If the unit is displaying erratic behavior move away from any fluorescent lighting, as it may be the cause.
- **WARNING:** Shock hazard - Do Not Open.
- Caution and marking information is located at the rear or bottom of the apparatus.
- **WARNING:** To reduce the risk of fire or electric shock, do not expose this apparatus to rain, moisture, dripping, or splashing.
- Objects filled with liquids, such as vases, shall not be placed on the apparatus.
- **WARNING:** This product may contain chemicals known to the State of California to cause birth defects, or other reproductive harm (California Prop 65). Wash hands after handling.
- This product meets and complies with all Federal regulations.



WARNING: To reduce the risk of electric shock, do not remove cover (or back). No user-serviceable parts inside. Refer servicing to qualified service personnel.



The exclamation point within an equilateral triangle is intended to alert the user to the presence of important operating and maintenance (servicing) instructions in the literature accompanying the appliance.



The lightning flash with arrowhead symbol, within an equilateral triangle, is intended to alert the user to the presence of un-insulated "dangerous voltage" within the product's enclosure that may be of sufficient magnitude to constitute a risk of electric shock to persons.



This symbol indicates that this product incorporates double insulation between hazardous mains voltage and user accessible parts.



WARNING: This product can expose you to chemicals including lead, which is known to the State of California to cause cancer. For more information go to: www.P65Warnings.ca.gov

Table of Contents

Setup	5
Features	
Includes	
Orientation	6
Function & Media Source Indicators	
Speaker Controls	
Rear Inputs	
Remote	8
Functions	
Remote Batteries	
Bluetooth Wireless	9
Pairing to a Bluetooth Device and Playing Audio Wirelessly	
Audio Inputs	10
Aux In (Stereo RCA Inputs)	
Line In	
Customer Support	12
Contact Information	
Warranty	
International Support	

Setup

Features

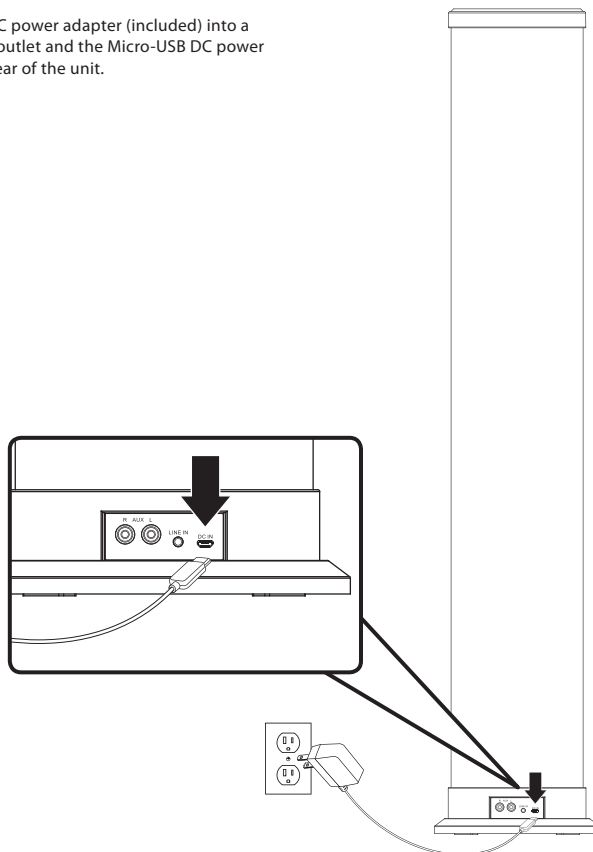
- Bluetooth Wireless range: 60 ft.
- 2 channel stereo sound
- Line In (3.5mm audio input)
- Aux In (RCA stereo audio inputs)

Includes

- Remote control: requires CR2025 battery (included)
- RCA stereo audio cable
- AC/DC power adapter

Power

Plug the AC/DC power adapter (included) into a standard wall outlet and the Micro-USB DC power input on the rear of the unit.



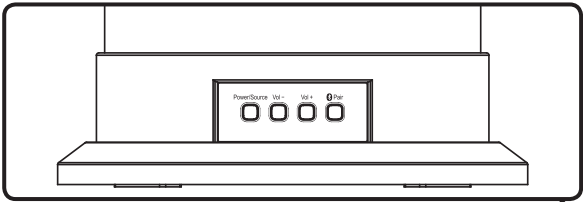
Orientation

Function & Media Source Indicators

Speaker Status	Indicator Light
Power OFF	Red Light
Line In Mode	Green Light
Aux In Mode	White Light
Bluetooth Pairing	Flashing Blue Light
Bluetooth Connected	Blue Light
Mute Volume	Flashing Source Light (ex. Line In - flashing green)
Adjusting Volume	Source Light flashes with each adjustment
Max Volume	Source Light remains solid

Remote Sensor

Speaker Controls



Power/ Source

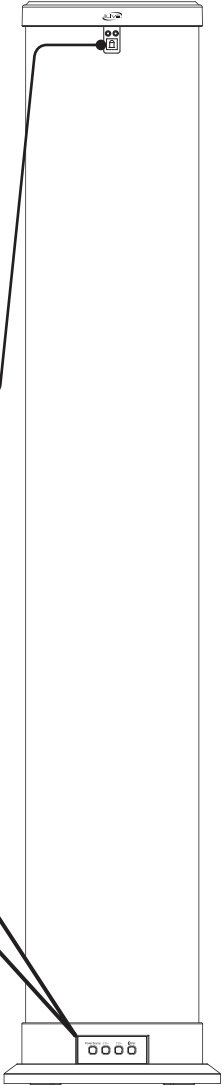
Press to power ON or OFF.
Press to switch between Line In, Aux In, and Bluetooth modes.

Pair

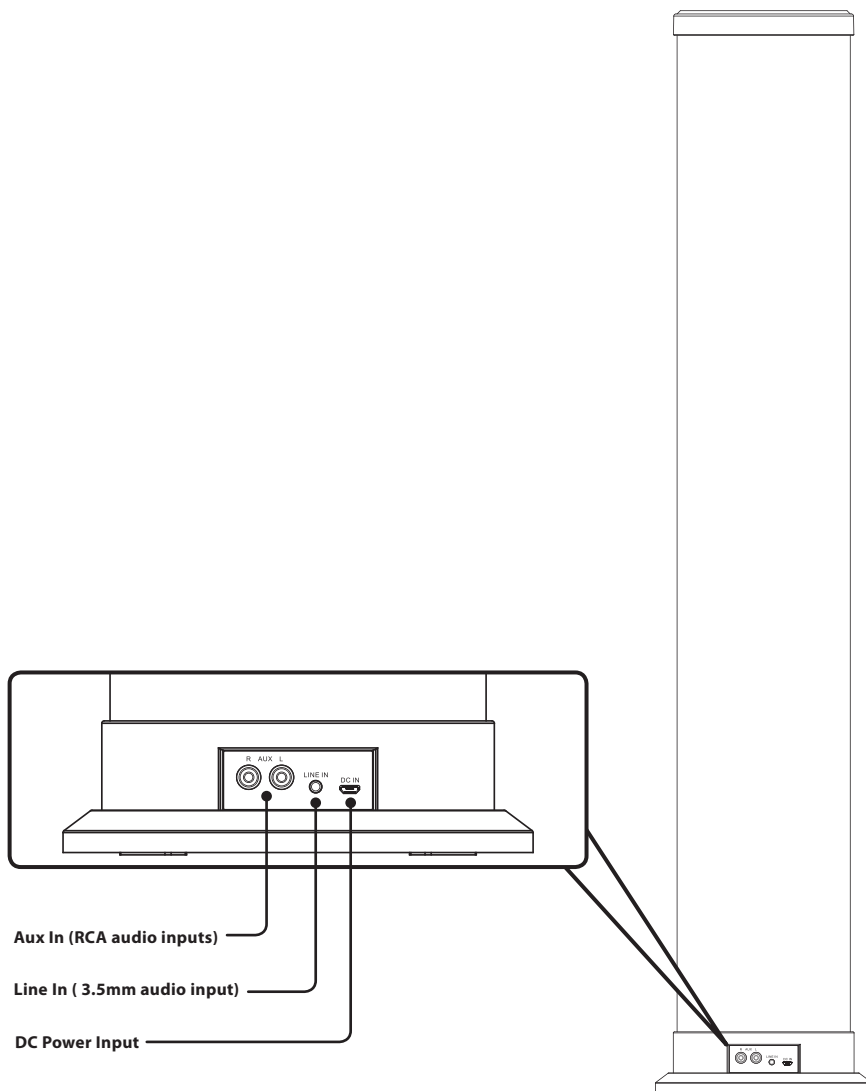
Press and hold to begin pairing to a Bluetooth device.

Volume +/-

Press to adjust the volume.

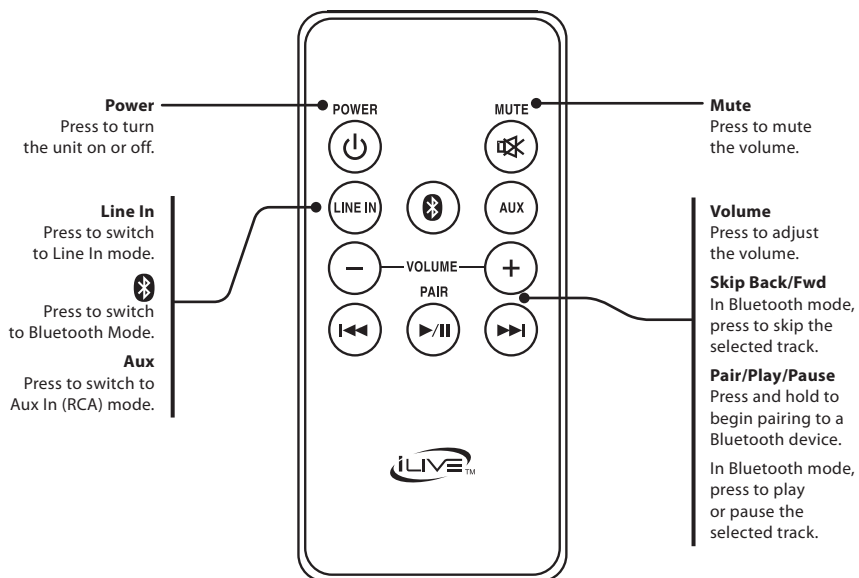


Rear Inputs



Remote

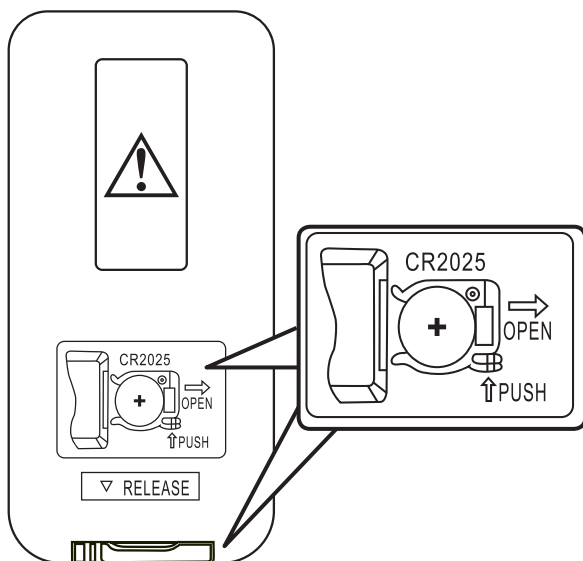
Functions



Remote Batteries

Requires 1 CR2025 battery.


Follow the diagram on the back of the remote for battery replacement.



Bluetooth Wireless

Pairing to a Bluetooth Device and Playing Audio Wirelessly

After initial pairing, the unit will stay paired unless unpaired manually by the user or erased due to a reset of the device. If your device should become unpaired or you find it is unable to connect, repeat these steps.

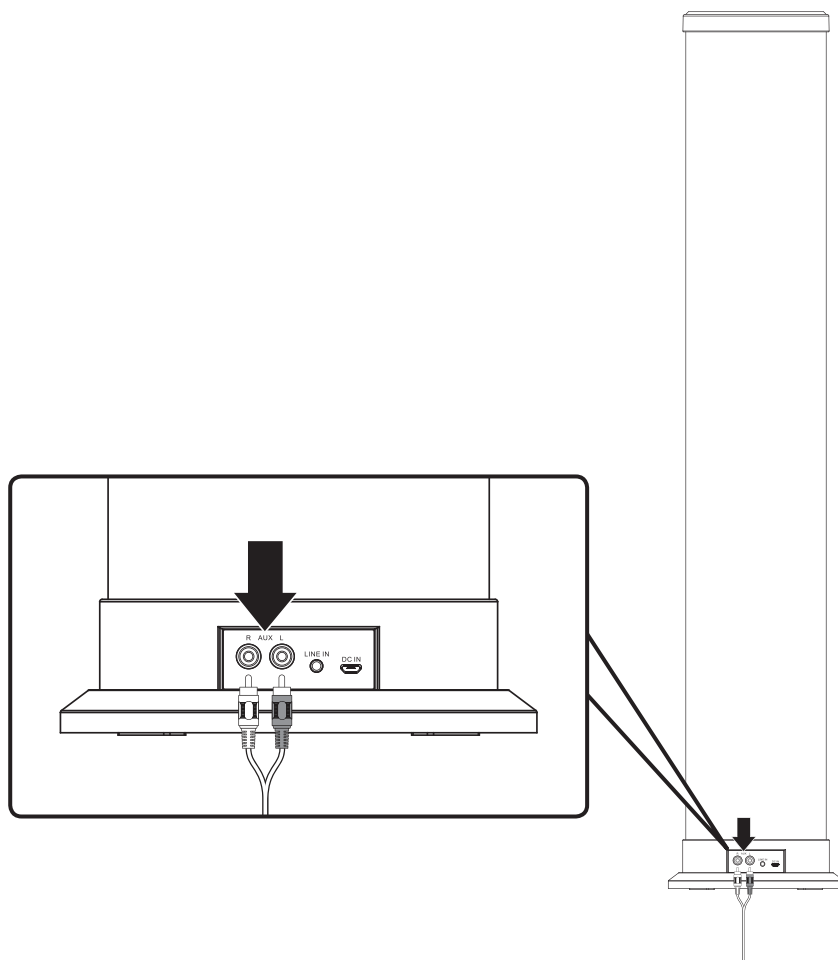
1. With the unit powered ON, press the  button on the speaker or the remote to switch to **Bluetooth Mode**, indicated by a slowly flashing blue light.
2. Press and hold the **Pair** button on the side of the **speaker** until the pairing indicator begins quickly flashing blue. *When pairing, remain within 3 feet of the unit.*
3. Use the controls on your Bluetooth device to select **ITB147** in your Bluetooth settings. *If your device requests a password, enter the default password **0 0 0 0**. Consult the user's manual for your specific device for more detailed instructions on pairing Bluetooth devices.*
4. When successfully paired, a chime will sound and the pairing indicator will change to a solid blue. Audio should now be heard through the speakers. Use the controls on the connected Bluetooth Device to select and begin playing audio.
5. Play, pause or skip audio using the controls on the connected Bluetooth Device or the speaker's remote.

Audio Inputs

Aux In (Stereo RCA Inputs)

Requires an RCA stereo audio cable (included). When connecting an RCA stereo audio cable (Red/White), match the colored ports to their corresponding plugs.

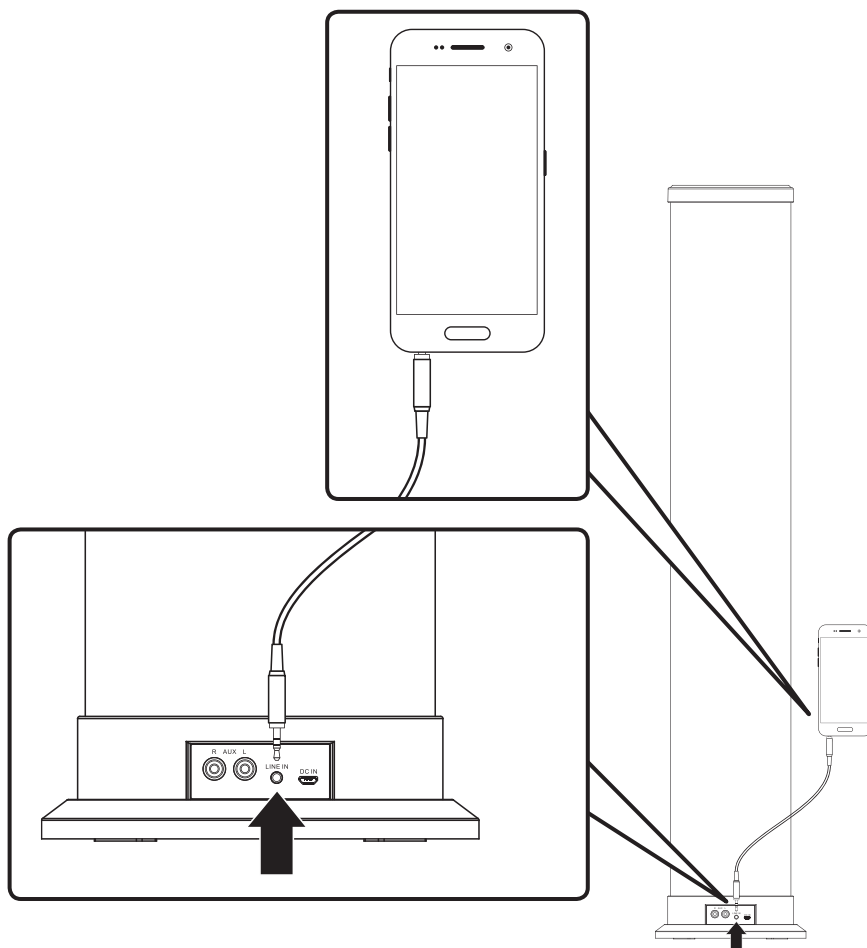
1. Connect the RCA stereo audio cable to the RCA Stereo Inputs on the speaker and the audio outputs on a television or other audio source.
2. Power ON the speaker and press **Source** to select **Aux In Mode**, indicated by a white light.
3. Audio played through the television/audio source should now be heard through the speakers.



Line In

Requires a 3.5 mm audio cable (not included).

1. Connect the 3.5 mm audio cable to the **Line In** on the speaker and the audio output/headphone jack on a smartphone or other audio source.
2. Power ON the speaker and press **Source** to select **Line In Mode**, indicated by a green light.
3. Audio played through the connected device should now be heard through the speakers. Use the controls on the connected device to play, pause, or skip selected tracks.



Customer Support

Contact Information

Website: www.iLiveElectronics.com

Email Support: prodinfo@dpiinc.com

Email Parts: partsinfo@dpiinc.com

Phone Support: 1-888-999-4215

Warranty

For Warranty Information and the most up-to-date version of this User's Guide, go to: www.iLiveElectronics.com

International Support

To download this User's Guide in English, Spanish, and French, or to get answers to frequently asked questions, visit the support section at:

www.iLiveElectronics.com

Para descargar este Manual del Usuario en inglés, español y francés, o para obtener respuestas a preguntas frecuentes, visite la sección de apoyo en: www.iLiveElectronics.com

Pour télécharger ce guide de l'utilisateur en anglais, espagnol ou français, ou pour obtenir des réponses à des questions fréquemment posées, consultez la rubrique d'assistance sur: www.iLiveElectronics.com

Copyright © 2017 Digital Products International (DPI, Inc.) All other trademarks appearing herein are the property of their respective owners. Specifications are subject to change without notice.



***Protect for Today
Sustain for Tomorrow***