

THESE DRAWINGS AND SPECIFICATIONS ARE THE PROPERTY AND CONFIDENTIAL MATERIAL OF HAND HELD PRODUCTS, INC. AND SHALL NOT BE REPRODUCED, OR COPIED, OR USED AS A BASIS FOR MANUFACTURE OR SALE OF EQUIPMENT OR DEVICES WITHOUT WRITTEN PERMISSION. ©

DRAWING NO. 500013862

REV#	REV DESCRIPTION	ECN#	DATE
A	RELEASE	500000010465	02/14/07



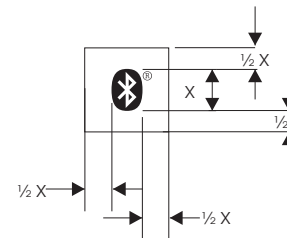
MATRL # 100004452




SCALE 2X

NOTES :

- COLORS:**
PANTONE PROCESS BLACK: BLUE TOOTH SYMBOL
HAND HELD PRODUCTS BLUE GRAY: BACKGROUND
PANTONE PROCESS WHITE: ALL GRAPHICS
- REFERENCE DRAWING: 500005259**
FOR DIE CUT AND MATERIAL SPECIFICATIONS
- BLUETOOTH SYMBOL SHOULD CONTAIN**
A KEEP OUT AREA DEFINED AS A BOX
ON EACH SIDE OF THE SYMBOL
 $\frac{1}{2}$ THE HEIGHT OF THE SYMBOL.
THE BOX IS NOT PRINTED.



- ROHS COMPLIANT INKS. SEE HAND HELD DOCUMENT #500007391**

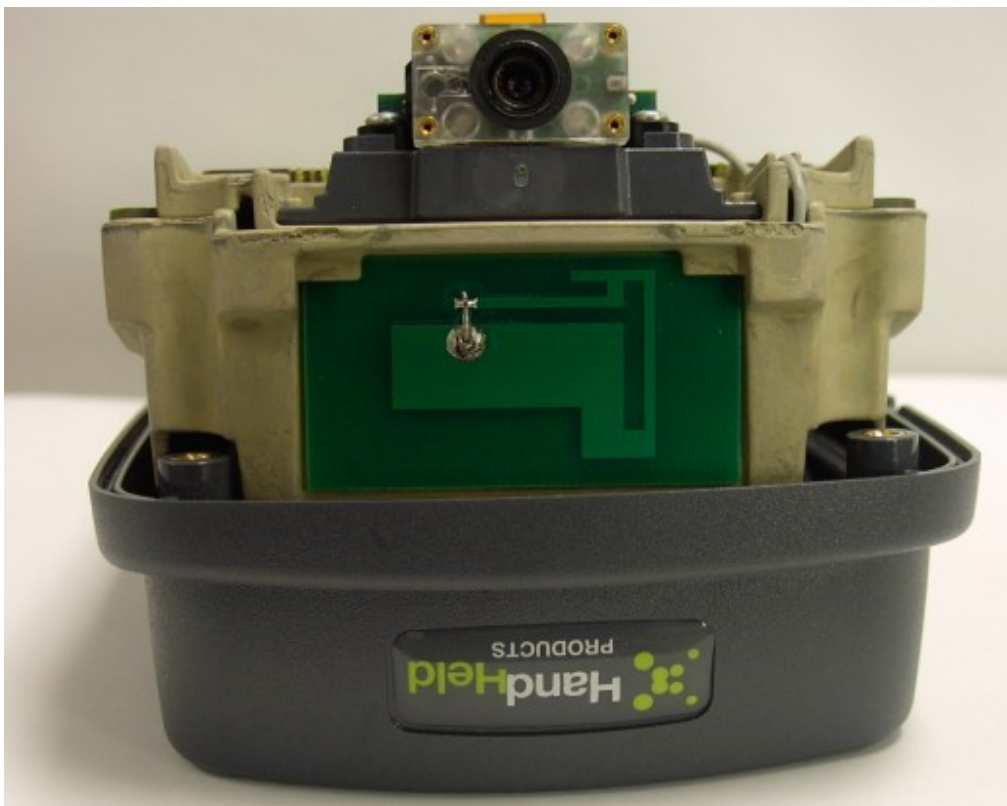
DESIGNED BY	D.FLETCHER	DATE	02/14/07
			
TITLE:	LABEL, 7850 AGENCY, BT & 802.11G		
A	DRAWING NO:	500013862	REV A
SCALE	DO NOT SCALE		SHEET 1 OF 1

ARTWORK LEVEL
ONE

**7850 “LPGE” Unit Configuration
802.11g and Bluetooth Radio Included**



**7850 “LPGE” Label
Placement**



**7850 “LPGE” 802.11g
Antenna Placement Internal**