

04_WCDMA IV_RMC 12.2Kbps_Right Cheek_Ch1413

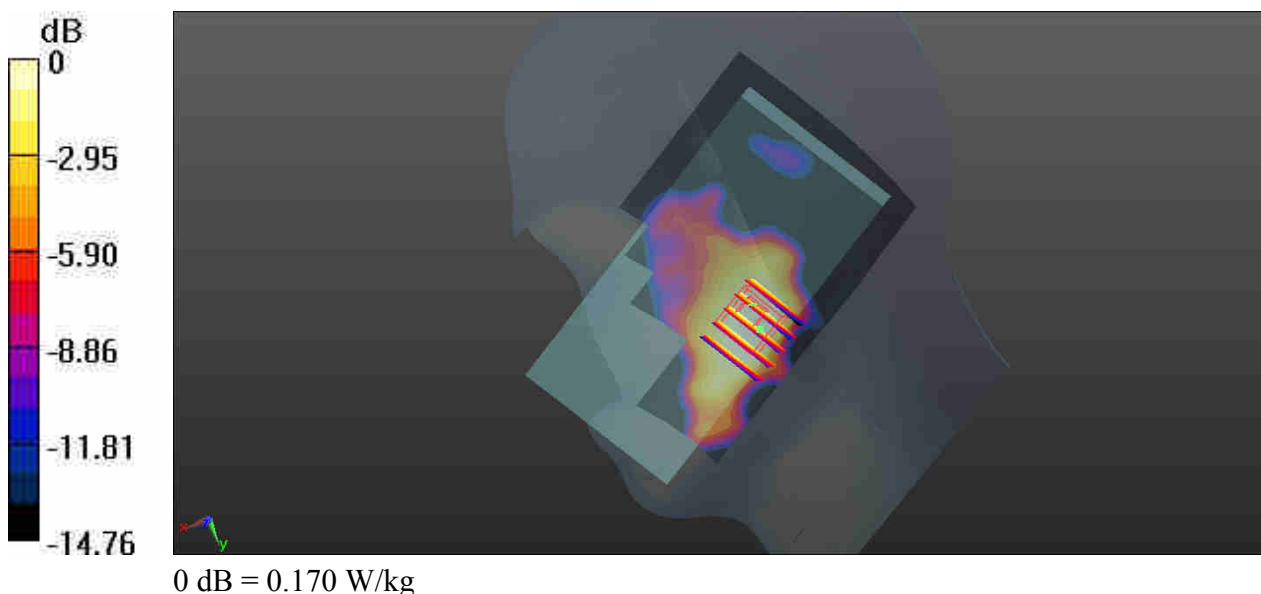
Communication System: UID 0, UMTS (0); Frequency: 1732.6 MHz; Duty Cycle: 1:1
Medium: HSL_1750_181104 Medium parameters used: $f = 1733 \text{ MHz}$; $\sigma = 1.361 \text{ S/m}$; $\epsilon_r = 41.422$;
 $\rho = 1000 \text{ kg/m}^3$
Ambient Temperature : $23.4 \text{ }^\circ\text{C}$; Liquid Temperature : $22.6 \text{ }^\circ\text{C}$

DASY5 Configuration:

- Probe: EX3DV4 - SN3819; ConvF(8.37, 8.37, 8.37); Calibrated: 2018.01.31;
- Sensor-Surface: 1.4mm (Mechanical Surface Detection)
- Electronics: DAE4 Sn1437; Calibrated: 2018.10.15
- Phantom: SAM1; Type: QD000P40CD; Serial: TP:1670
- Measurement SW: DASY52, Version 52.8 (8); SEMCAD X Version 14.6.10 (7331)

Ch1413/Area Scan (71x131x1): Interpolated grid: $dx=15\text{mm}$, $dy=15\text{mm}$
Maximum value of SAR (interpolated) = 0.191 W/kg

Ch1413/Zoom Scan (5x5x7)/Cube 0: Measurement grid: $dx=8\text{mm}$, $dy=8\text{mm}$, $dz=5\text{mm}$
Reference Value = 0 V/m ; Power Drift = 0.03 dB
Peak SAR (extrapolated) = 0.203 W/kg
SAR(1 g) = 0.139 W/kg ; SAR(10 g) = 0.089 W/kg
Maximum value of SAR (measured) = 0.170 W/kg



05_WCDMA II_RMC 12.2Kbps_Left Cheek_Ch9400

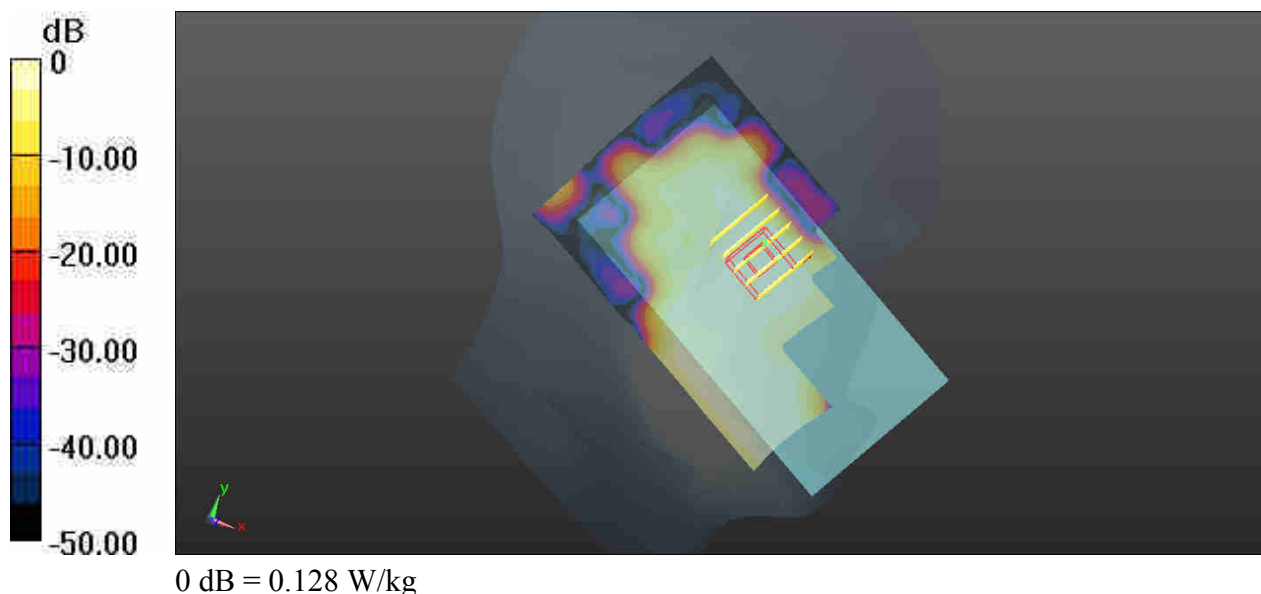
Communication System: UID 0, UMTS (0); Frequency: 1880 MHz; Duty Cycle: 1:1
Medium: HSL_1900_181105 Medium parameters used: $f = 1880$ MHz; $\sigma = 1.392$ S/m; $\epsilon_r = 41.101$;
 $\rho = 1000$ kg/m³
Ambient Temperature : 23.6 °C; Liquid Temperature : 22.6 °C

DASY5 Configuration:

- Probe: EX3DV4 - SN3819; ConvF(8.13, 8.13, 8.13); Calibrated: 2018.01.31;
- Sensor-Surface: 1.4mm (Mechanical Surface Detection)
- Electronics: DAE4 Sn1437; Calibrated: 2018.10.15
- Phantom: SAM1; Type: QD000P40CD; Serial: TP:1670
- Measurement SW: DASY52, Version 52.8 (8); SEMCAD X Version 14.6.10 (7331)

Ch9400/Area Scan (71x131x1): Interpolated grid: dx=15mm, dy=15mm
Maximum value of SAR (interpolated) = 0.238 W/kg

Ch9400/Zoom Scan (5x5x7)/Cube 0: Measurement grid: dx=8mm, dy=8mm, dz=5mm
Reference Value = 0 V/m; Power Drift = 0.01 dB
Peak SAR (extrapolated) = 0.220 W/kg
SAR(1 g) = 0.110 W/kg; SAR(10 g) = 0.063 W/kg
Maximum value of SAR (measured) = 0.128 W/kg



06_CDMA2000 BC0_RC3 SO55_Left Cheek_Ch777

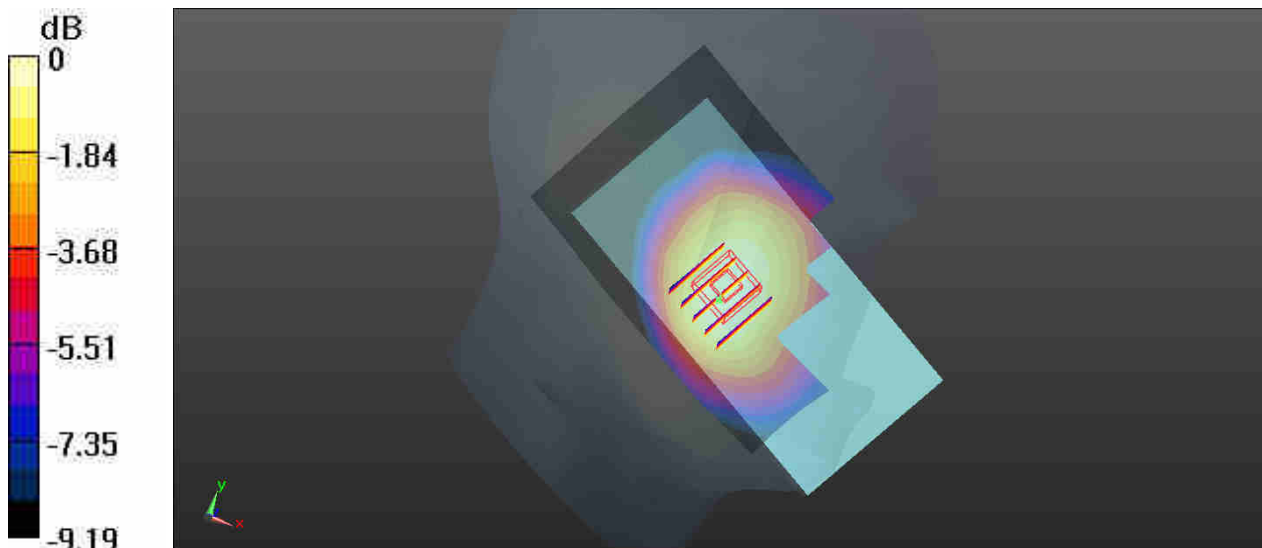
Communication System: UID 0, CDMA2000 (0); Frequency: 848.31 MHz; Duty Cycle: 1:1
Medium: HSL_835_181103 Medium parameters used: $f = 848.31$ MHz; $\sigma = 0.883$ S/m; $\epsilon_r = 41.573$;
 $\rho = 1000$ kg/m³
Ambient Temperature : 23.5 °C; Liquid Temperature : 22.5 °C

DASY5 Configuration:

- Probe: EX3DV4 - SN3819; ConvF(9.66, 9.66, 9.66); Calibrated: 2018.01.31;
- Sensor-Surface: 1.4mm (Mechanical Surface Detection)
- Electronics: DAE4 Sn1437; Calibrated: 2018.10.15
- Phantom: SAM1; Type: QD000P40CD; Serial: TP:1670
- Measurement SW: DASY52, Version 52.8 (8); SEMCAD X Version 14.6.10 (7331)

Ch777/Area Scan (71x131x1): Interpolated grid: dx=15mm, dy=15mm
Maximum value of SAR (interpolated) = 0.500 W/kg

Ch777/Zoom Scan (5x5x7)/Cube 0: Measurement grid: dx=8mm, dy=8mm, dz=5mm
Reference Value = 1.827 V/m; Power Drift = 0.03 dB
Peak SAR (extrapolated) = 0.550 W/kg
SAR(1 g) = 0.447 W/kg; SAR(10 g) = 0.343 W/kg
Maximum value of SAR (measured) = 0.501 W/kg



0 dB = 0.500 W/kg

07_CDMA2000 BC10_RC3 SO55_Left Cheek_Ch580

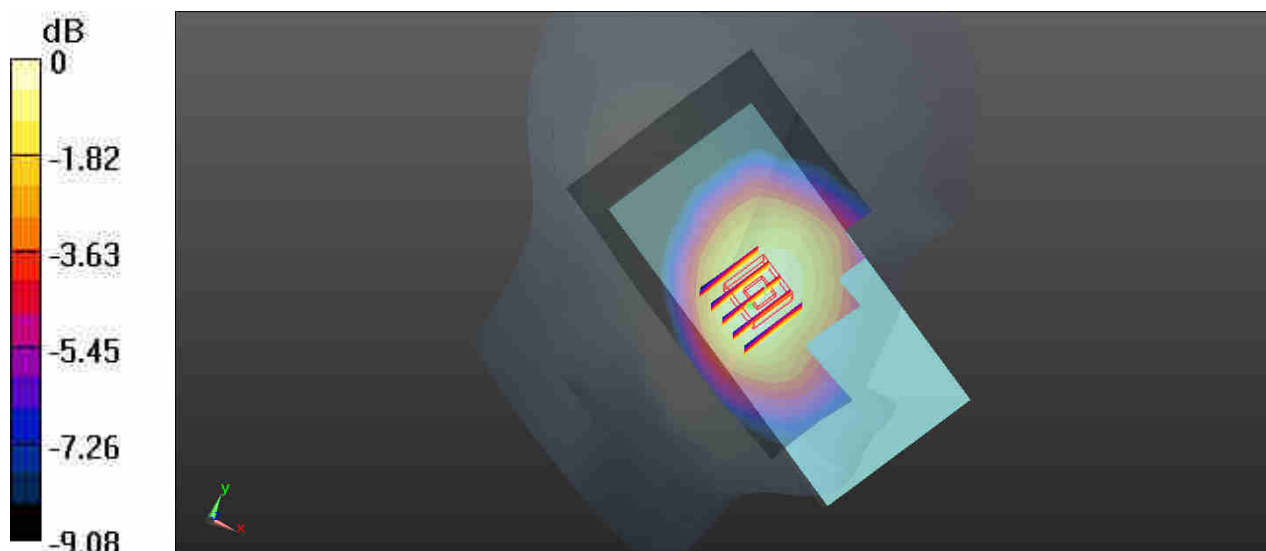
Communication System: UID 0, CDMA2000 (0); Frequency: 820.5 MHz; Duty Cycle: 1:1
 Medium: HSL_835_181103 Medium parameters used: $f = 820.5$ MHz; $\sigma = 0.888$ S/m; $\epsilon_r = 42.147$;
 $\rho = 1000$ kg/m³
 Ambient Temperature : 23.5 °C; Liquid Temperature : 22.5 °C

DASY5 Configuration:

- Probe: EX3DV4 - SN3819; ConvF(9.66, 9.66, 9.66); Calibrated: 2018.01.31;
- Sensor-Surface: 1.4mm (Mechanical Surface Detection)
- Electronics: DAE4 Sn1437; Calibrated: 2018.10.15
- Phantom: SAM1; Type: QD000P40CD; Serial: TP:1670
- Measurement SW: DASY52, Version 52.8 (8); SEMCAD X Version 14.6.10 (7331)

Ch580/Area Scan (71x131x1): Interpolated grid: dx=15mm, dy=15mm
 Maximum value of SAR (interpolated) = 0.350 W/kg

Ch580/Zoom Scan (5x5x7)/Cube 0: Measurement grid: dx=8mm, dy=8mm, dz=5mm
 Reference Value = 0.4950 V/m; Power Drift = 0.02 dB
 Peak SAR (extrapolated) = 0.385 W/kg
SAR(1 g) = 0.316 W/kg; SAR(10 g) = 0.245 W/kg
 Maximum value of SAR (measured) = 0.356 W/kg



0 dB = 0.350 W/kg

08_CDMA2000 BC1_RC3 SO55_Left Cheek_Ch1175

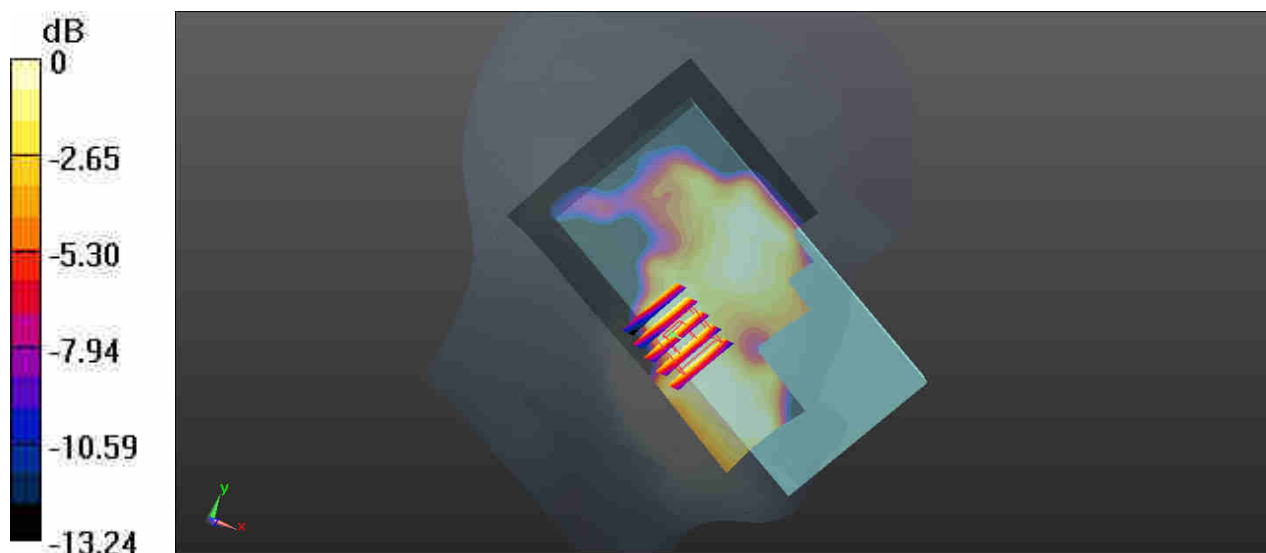
Communication System: UID 0, CDMA2000 (0); Frequency: 1908.75 MHz; Duty Cycle: 1:1
 Medium: HSL_1900_181105 Medium parameters used: $f = 1909$ MHz; $\sigma = 1.428$ S/m; $\epsilon_r = 40.975$;
 $\rho = 1000$ kg/m³
 Ambient Temperature : 23.6 °C; Liquid Temperature : 22.6 °C

DASY5 Configuration:

- Probe: EX3DV4 - SN3819; ConvF(8.13, 8.13, 8.13); Calibrated: 2018.01.31;
- Sensor-Surface: 1.4mm (Mechanical Surface Detection)
- Electronics: DAE4 Sn1437; Calibrated: 2018.10.15
- Phantom: SAM1; Type: QD000P40CD; Serial: TP:1670
- Measurement SW: DASY52, Version 52.8 (8); SEMCAD X Version 14.6.10 (7331)

Ch1175/Area Scan (71x131x1): Interpolated grid: dx=15mm, dy=15mm
 Maximum value of SAR (interpolated) = 0.182 W/kg

Ch1175/Zoom Scan (5x5x7)/Cube 0: Measurement grid: dx=8mm, dy=8mm, dz=5mm
 Reference Value = 0.1850 V/m; Power Drift = 0.10 dB
 Peak SAR (extrapolated) = 0.145 W/kg
SAR(1 g) = 0.093 W/kg; SAR(10 g) = 0.061 W/kg
 Maximum value of SAR (measured) = 0.119 W/kg



0 dB = 0.119 W/kg

09_LTE Band 12_10M_QPSK_1RB_25Offset_Right Cheek_Ch23095

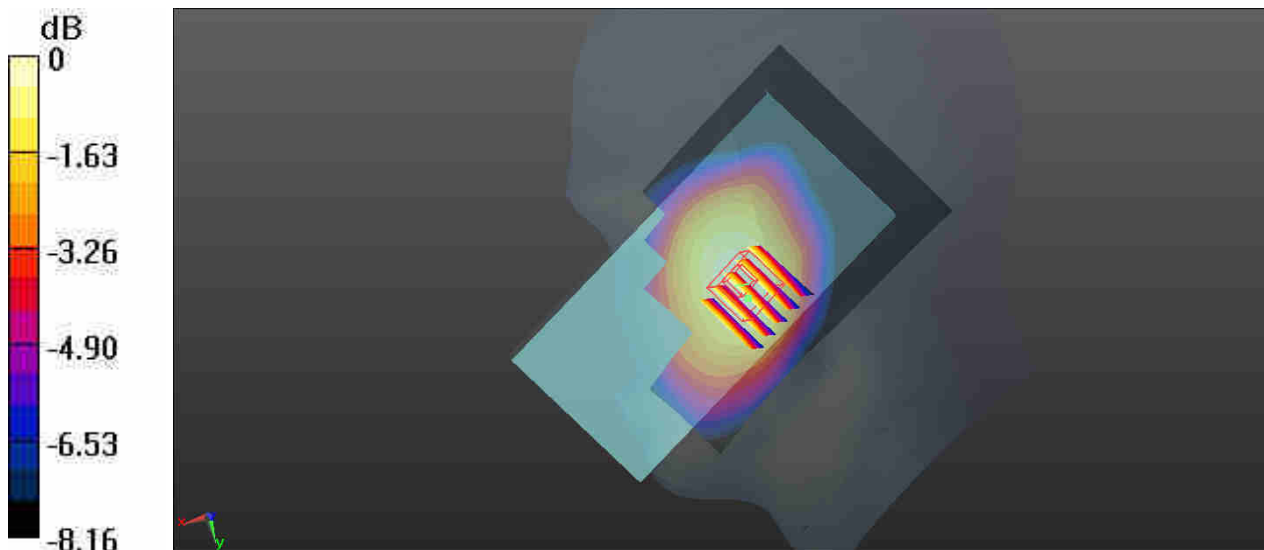
Communication System: UID 0, LTE (0); Frequency: 707.5 MHz; Duty Cycle: 1:1
Medium: HSL_750_181102 Medium parameters used: $f = 707.5$ MHz; $\sigma = 0.859$ S/m; $\epsilon_r = 41.717$;
 $\rho = 1000$ kg/m³
Ambient Temperature : 23.4 °C; Liquid Temperature : 22.5 °C

DASY5 Configuration:

- Probe: EX3DV4 - SN3819; ConvF(10.06, 10.06, 10.06); Calibrated: 2018.01.31;
- Sensor-Surface: 1.4mm (Mechanical Surface Detection)
- Electronics: DAE4 Sn1437; Calibrated: 2018.10.15
- Phantom: SAM1; Type: QD000P40CD; Serial: TP:1670
- Measurement SW: DASY52, Version 52.8 (8); SEMCAD X Version 14.6.10 (7331)

Ch23095/Area Scan (71x131x1): Interpolated grid: dx=15mm, dy=15mm
Maximum value of SAR (interpolated) = 0.337 W/kg

Ch23095/Zoom Scan (5x5x7)/Cube 0: Measurement grid: dx=8mm, dy=8mm, dz=5mm
Reference Value = 1.833 V/m; Power Drift = 0.02 dB
Peak SAR (extrapolated) = 0.358 W/kg
SAR(1 g) = 0.300 W/kg; SAR(10 g) = 0.238 W/kg
Maximum value of SAR (measured) = 0.334 W/kg



0 dB = 0.337 W/kg

10_LTE Band 13_10M_QPSK_1RB_25Offset_Right Cheek_Ch23230

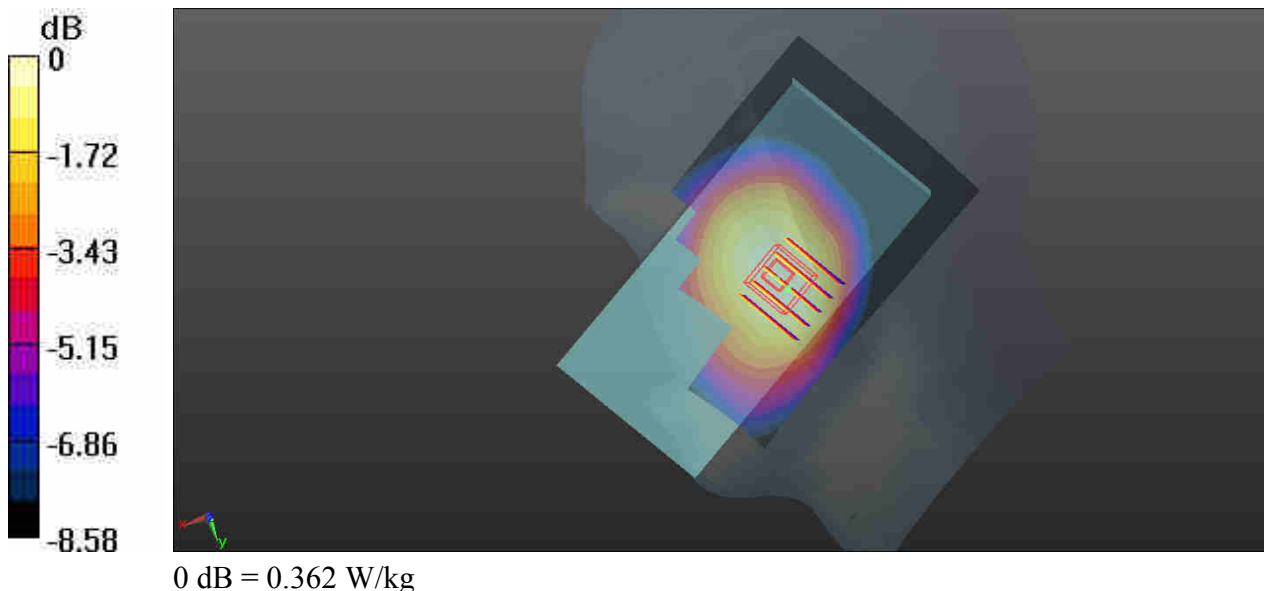
Communication System: UID 0, LTE (0); Frequency: 782 MHz; Duty Cycle: 1:1
Medium: HSL_750_181102 Medium parameters used: $f = 782 \text{ MHz}$; $\sigma = 0.901 \text{ S/m}$; $\epsilon_r = 40.08$; $\rho = 1000 \text{ kg/m}^3$
Ambient Temperature : $23.4 \text{ }^\circ\text{C}$; Liquid Temperature : $22.5 \text{ }^\circ\text{C}$

DASY5 Configuration:

- Probe: EX3DV4 - SN3819; ConvF(10.06, 10.06, 10.06); Calibrated: 2018.01.31;
- Sensor-Surface: 1.4mm (Mechanical Surface Detection)
- Electronics: DAE4 Sn1437; Calibrated: 2018.10.15
- Phantom: SAM1; Type: QD000P40CD; Serial: TP:1670
- Measurement SW: DASY52, Version 52.8 (8); SEMCAD X Version 14.6.10 (7331)

Ch23230/Area Scan (71x131x1): Interpolated grid: $dx=15\text{mm}$, $dy=15\text{mm}$
Maximum value of SAR (interpolated) = 0.362 W/kg

Ch23230/Zoom Scan (5x5x7)/Cube 0: Measurement grid: $dx=8\text{mm}$, $dy=8\text{mm}$, $dz=5\text{mm}$
Reference Value = 0.8160 V/m ; Power Drift = 0.02 dB
Peak SAR (extrapolated) = 0.390 W/kg
SAR(1 g) = 0.320 W/kg ; SAR(10 g) = 0.250 W/kg
Maximum value of SAR (measured) = 0.360 W/kg



11_LTE Band 5_10M_QPSK_1RB_0Offset_Left Cheek_Ch20525

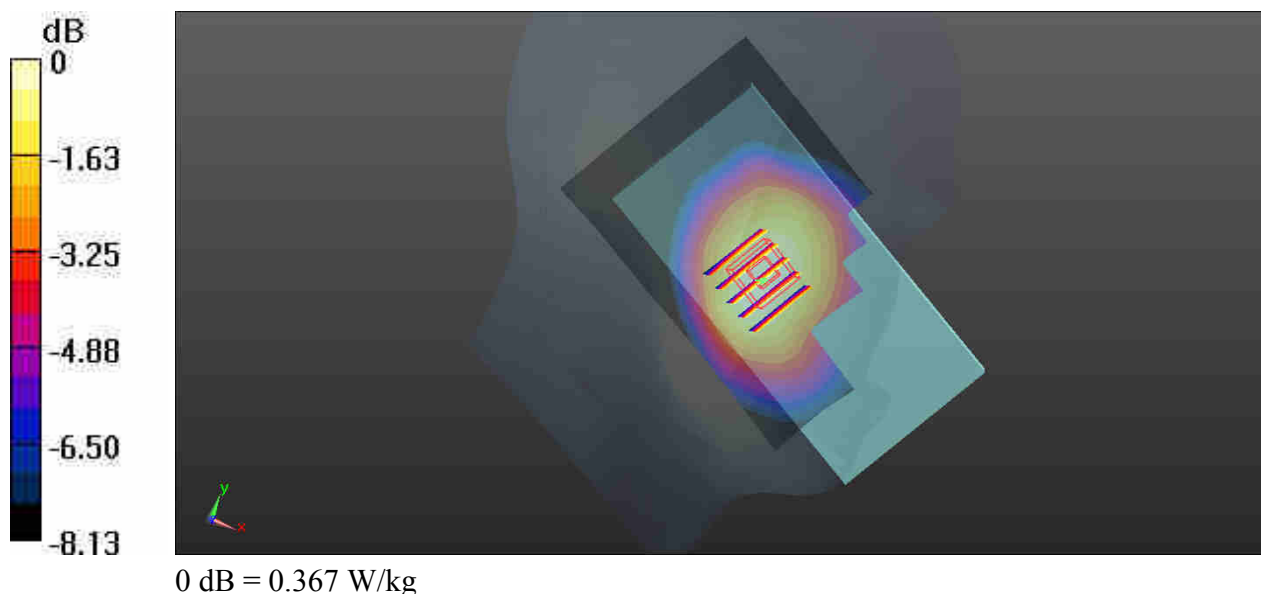
Communication System: UID 0, LTE (0); Frequency: 836.5 MHz; Duty Cycle: 1:1
Medium: HSL_835_181103 Medium parameters used: $f = 836.5$ MHz; $\sigma = 0.887$ S/m; $\epsilon_r = 41.952$;
 $\rho = 1000$ kg/m³
Ambient Temperature : 23.5 °C; Liquid Temperature : 22.5 °C

DASY5 Configuration:

- Probe: EX3DV4 - SN3819; ConvF(9.66, 9.66, 9.66); Calibrated: 2018.01.31;
- Sensor-Surface: 1.4mm (Mechanical Surface Detection)
- Electronics: DAE4 Sn1437; Calibrated: 2018.10.15
- Phantom: SAM1; Type: QD000P40CD; Serial: TP:1670
- Measurement SW: DASY52, Version 52.8 (8); SEMCAD X Version 14.6.10 (7331)

Ch20525/Area Scan (71x131x1): Interpolated grid: dx=15mm, dy=15mm
Maximum value of SAR (interpolated) = 0.367 W/kg

Ch20525/Zoom Scan (5x5x7)/Cube 0: Measurement grid: dx=8mm, dy=8mm, dz=5mm
Reference Value = 2.874 V/m; Power Drift = -0.13 dB
Peak SAR (extrapolated) = 0.399 W/kg
SAR(1 g) = 0.326 W/kg; SAR(10 g) = 0.252 W/kg
Maximum value of SAR (measured) = 0.366 W/kg



12_LTE Band 26_15M_QPSK_1RB_0Offset_Left Cheek_Ch26965

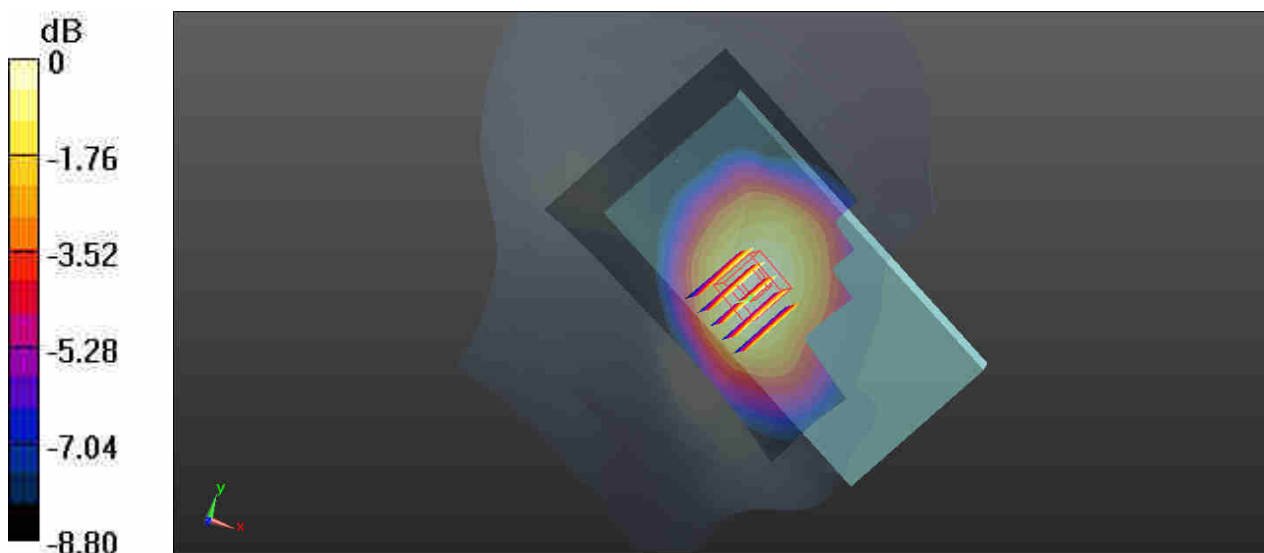
Communication System: UID 0, LTE (0); Frequency: 841.5 MHz; Duty Cycle: 1:1
Medium: HSL_835_181103 Medium parameters used: $f = 841.5$ MHz; $\sigma = 0.886$ S/m; $\epsilon_r = 41.822$;
 $\rho = 1000$ kg/m³
Ambient Temperature : 23.5 °C; Liquid Temperature : 22.5 °C

DASY5 Configuration:

- Probe: EX3DV4 - SN3819; ConvF(9.66, 9.66, 9.66); Calibrated: 2018.01.31;
- Sensor-Surface: 1.4mm (Mechanical Surface Detection)
- Electronics: DAE4 Sn1437; Calibrated: 2018.10.15
- Phantom: SAM1; Type: QD000P40CD; Serial: TP:1670
- Measurement SW: DASY52, Version 52.8 (8); SEMCAD X Version 14.6.10 (7331)

Ch26965/Area Scan (71x131x1): Interpolated grid: dx=15mm, dy=15mm
Maximum value of SAR (interpolated) = 0.382 W/kg

Ch26965/Zoom Scan (5x5x7)/Cube 0: Measurement grid: dx=8mm, dy=8mm, dz=5mm
Reference Value = 3.141 V/m; Power Drift = 0.02 dB
Peak SAR (extrapolated) = 0.420 W/kg
SAR(1 g) = 0.342 W/kg; SAR(10 g) = 0.264 W/kg
Maximum value of SAR (measured) = 0.382 W/kg



0 dB = 0.382 W/kg

13_LTE Band 4_20M_QPSK_1RB_0Offset_Right Cheek_Ch20175

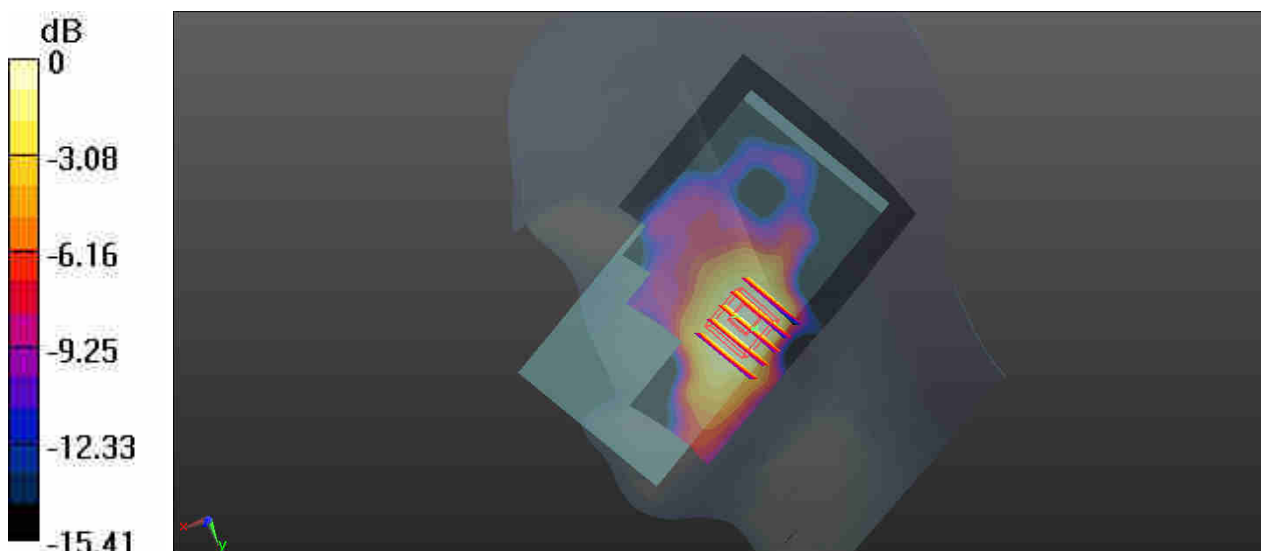
Communication System: UID 0, LTE (0); Frequency: 1732.5 MHz; Duty Cycle: 1:1
Medium: HSL_1750_181104 Medium parameters used: $f = 1732.5$ MHz; $\sigma = 1.36$ S/m; $\epsilon_r = 41.426$;
 $\rho = 1000$ kg/m³
Ambient Temperature : 23.4 °C; Liquid Temperature : 22.6 °C

DASY5 Configuration:

- Probe: EX3DV4 - SN3819; ConvF(8.37, 8.37, 8.37); Calibrated: 2018.01.31;
- Sensor-Surface: 1.4mm (Mechanical Surface Detection)
- Electronics: DAE4 Sn1437; Calibrated: 2018.10.15
- Phantom: SAM1; Type: QD000P40CD; Serial: TP:1670
- Measurement SW: DASY52, Version 52.8 (8); SEMCAD X Version 14.6.10 (7331)

Ch20175/Area Scan (71x131x1): Interpolated grid: dx=15mm, dy=15mm
Maximum value of SAR (interpolated) = 0.301 W/kg

Ch20175/Zoom Scan (5x5x7)/Cube 0: Measurement grid: dx=8mm, dy=8mm, dz=5mm
Reference Value = 0 V/m; Power Drift = 0.04 dB
Peak SAR (extrapolated) = 0.321 W/kg
SAR(1 g) = 0.204 W/kg; SAR(10 g) = 0.131 W/kg
Maximum value of SAR (measured) = 0.269 W/kg



0 dB = 0.269 W/kg

14_LTE Band 25_20M_QPSK_1RB_0Offset_Left Cheek_Ch26340

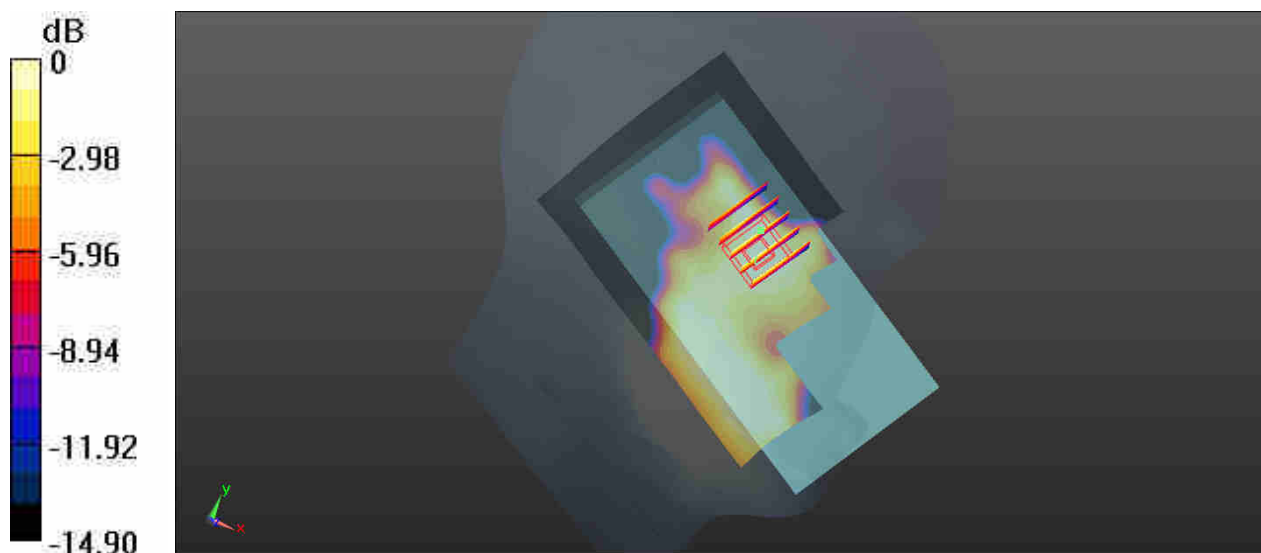
Communication System: UID 0, LTE (0); Frequency: 1880 MHz; Duty Cycle: 1:1
Medium: HSL_1900_181105 Medium parameters used: $f = 1880$ MHz; $\sigma = 1.392$ S/m; $\epsilon_r = 41.101$;
 $\rho = 1000$ kg/m³
Ambient Temperature : 23.6 °C; Liquid Temperature : 22.6 °C

DASY5 Configuration:

- Probe: EX3DV4 - SN3819; ConvF(8.13, 8.13, 8.13); Calibrated: 2018.01.31;
- Sensor-Surface: 1.4mm (Mechanical Surface Detection)
- Electronics: DAE4 Sn1437; Calibrated: 2018.10.15
- Phantom: SAM1; Type: QD000P40CD; Serial: TP:1670
- Measurement SW: DASY52, Version 52.8 (8); SEMCAD X Version 14.6.10 (7331)

Ch26340/Area Scan (71x131x1): Interpolated grid: dx=15mm, dy=15mm
Maximum value of SAR (interpolated) = 0.159 W/kg

Ch26340/Zoom Scan (5x5x7)/Cube 0: Measurement grid: dx=8mm, dy=8mm, dz=5mm
Reference Value = 0.7250 V/m; Power Drift = 0.04 dB
Peak SAR (extrapolated) = 0.143 W/kg
SAR(1 g) = 0.100 W/kg; SAR(10 g) = 0.066 W/kg
Maximum value of SAR (measured) = 0.123 W/kg



0 dB = 0.123 W/kg

15_LTE Band 2 20M_QPSK_1RB_0Offset_Left Cheek_Ch18900

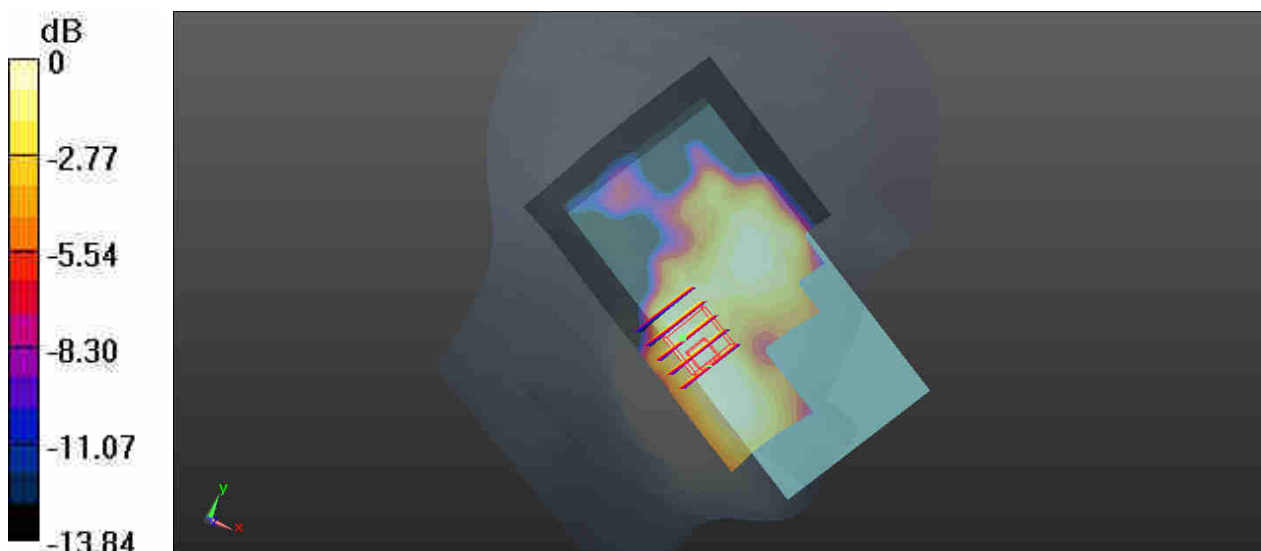
Communication System: UID 0, LTE (0); Frequency: 1880 MHz; Duty Cycle: 1:1
Medium: HSL_1900_181105 Medium parameters used: $f = 1880 \text{ MHz}$; $\sigma = 1.392 \text{ S/m}$; $\epsilon_r = 41.101$;
 $\rho = 1000 \text{ kg/m}^3$
Ambient Temperature : 23.6 °C; Liquid Temperature : 22.6 °C

DASY5 Configuration:

- Probe: EX3DV4 - SN3819; ConvF(8.13, 8.13, 8.13); Calibrated: 2018.01.31;
- Sensor-Surface: 1.4mm (Mechanical Surface Detection)
- Electronics: DAE4 Sn1437; Calibrated: 2018.10.15
- Phantom: SAM1; Type: QD000P40CD; Serial: TP:1670
- Measurement SW: DASY52, Version 52.8 (8); SEMCAD X Version 14.6.10 (7331)

Ch18900/Area Scan (71x131x1): Interpolated grid: $dx=15\text{mm}$, $dy=15\text{mm}$
Maximum value of SAR (interpolated) = 0.172 W/kg

Ch18900/Zoom Scan (5x5x7)/Cube 0: Measurement grid: $dx=8\text{mm}$, $dy=8\text{mm}$, $dz=5\text{mm}$
Reference Value = 0.9860 V/m; Power Drift = 0.08 dB
Peak SAR (extrapolated) = 0.199 W/kg
SAR(1 g) = 0.126 W/kg; SAR(10 g) = 0.081 W/kg
Maximum value of SAR (measured) = 0.164 W/kg



0 dB = 0.164 W/kg

16_LTE Band 7_20M_QPSK_1RB_49Offset_Right Cheek_Ch20850

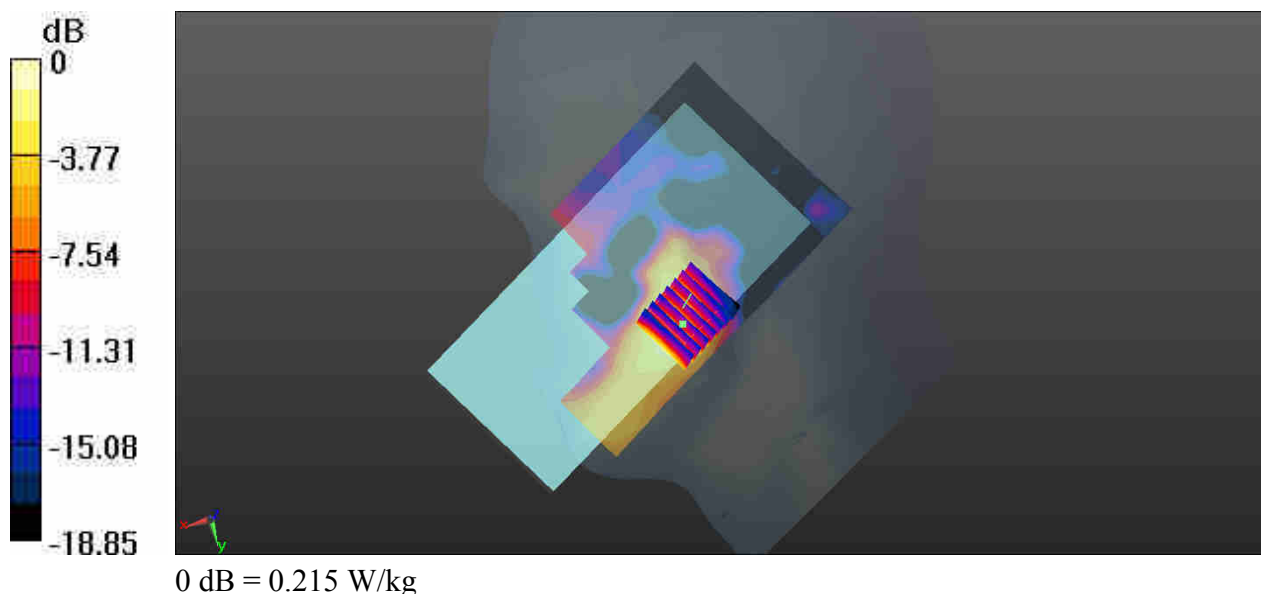
Communication System: UID 0, LTE (0); Frequency: 2510 MHz; Duty Cycle: 1:1
Medium: HSL_2600_181023 Medium parameters used: $f = 2510$ MHz; $\sigma = 1.9$ S/m; $\epsilon_r = 38.66$; $\rho = 1000$ kg/m³
Ambient Temperature : 23.4 °C; Liquid Temperature : 22.4 °C

DASY5 Configuration:

- Probe: EX3DV4 - SN3819; ConvF(7.21, 7.21, 7.21); Calibrated: 2018.01.31;
- Sensor-Surface: 1.4mm (Mechanical Surface Detection)
- Electronics: DAE4 Sn1437; Calibrated: 2018.10.15
- Phantom: SAM1; Type: QD000P40CD; Serial: TP:1670
- Measurement SW: DASY52, Version 52.8 (8); SEMCAD X Version 14.6.10 (7331)

Ch20850/Area Scan (81x161x1): Interpolated grid: dx=12mm, dy=12mm
Maximum value of SAR (interpolated) = 0.215 W/kg

Ch20850/Zoom Scan (7x7x7)/Cube 0: Measurement grid: dx=5mm, dy=5mm, dz=5mm
Reference Value = 5.089 V/m; Power Drift = 0.02 dB
Peak SAR (extrapolated) = 0.270 W/kg
SAR(1 g) = 0.141 W/kg; SAR(10 g) = 0.073 W/kg
Maximum value of SAR (measured) = 0.202 W/kg



17_LTE Band 41_20M_QPSK_1RB_49Offset_Right Cheek_Ch40185

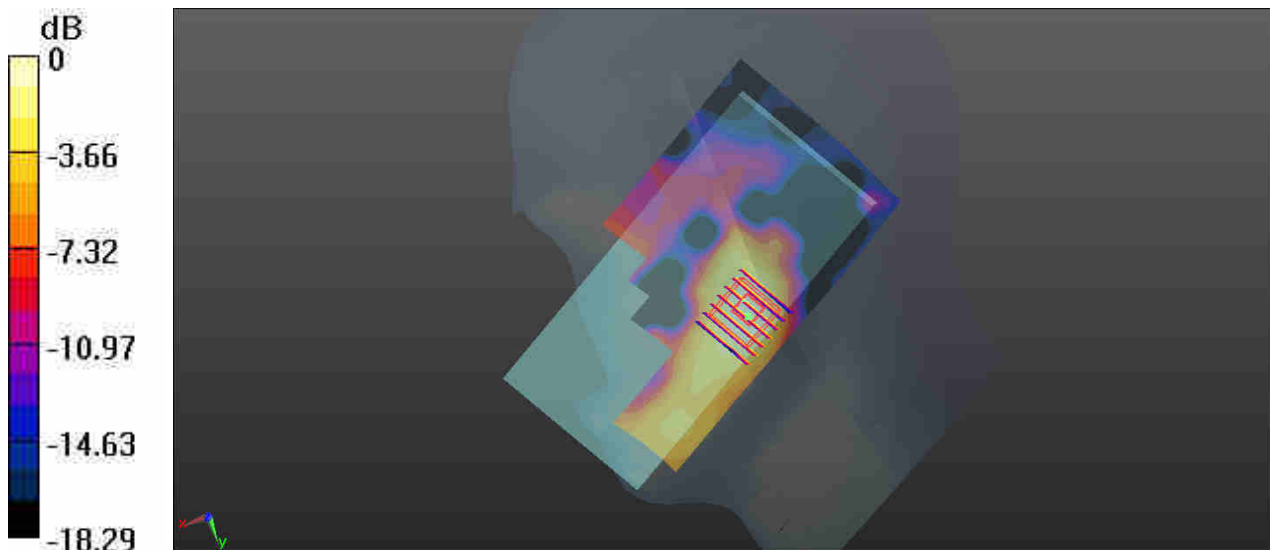
Communication System: UID 0, LTE (0); Frequency: 2549.5 MHz; Duty Cycle: 1:1.59
Medium: HSL_2600_181023 Medium parameters used: $f = 2549.5$ MHz; $\sigma = 1.935$ S/m; $\epsilon_r = 38.528$;
 $\rho = 1000$ kg/m³
Ambient Temperature : 23.4 °C; Liquid Temperature : 22.4 °C

DASY5 Configuration:

- Probe: EX3DV4 - SN3819; ConvF(7.21, 7.21, 7.21); Calibrated: 2018.01.31;
- Sensor-Surface: 1.4mm (Mechanical Surface Detection)
- Electronics: DAE4 Sn1437; Calibrated: 2018.10.15
- Phantom: SAM1; Type: QD000P40CD; Serial: TP:1670
- Measurement SW: DASY52, Version 52.8 (8); SEMCAD X Version 14.6.10 (7331)

Ch40185/Area Scan (81x161x1): Interpolated grid: dx=12mm, dy=12mm
Maximum value of SAR (interpolated) = 0.135 W/kg

Ch40185/Zoom Scan (7x7x7)/Cube 0: Measurement grid: dx=5mm, dy=5mm, dz=5mm
Reference Value = 4.135 V/m; Power Drift = 0.03 dB
Peak SAR (extrapolated) = 0.171 W/kg
SAR(1 g) = 0.091 W/kg; SAR(10 g) = 0.049 W/kg
Maximum value of SAR (measured) = 0.132 W/kg



0 dB = 0.132 W/kg

18_WLAN2.4GHz_802.11b 6Mbps_Left Cheek_Ch6

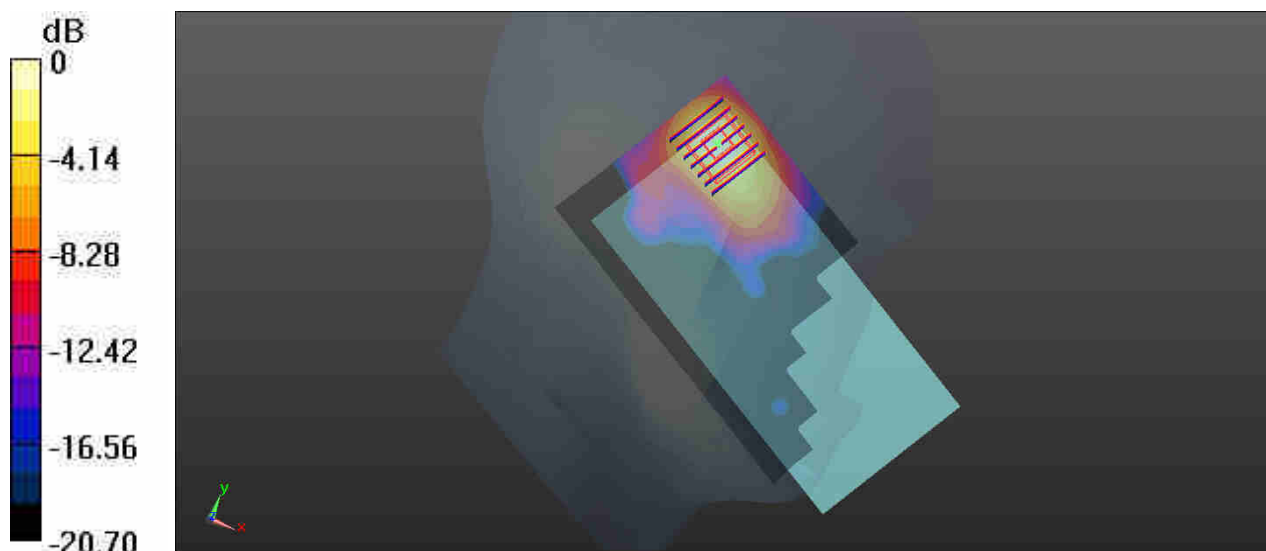
Communication System: UID 0, WIFI (0); Frequency: 2437 MHz; Duty Cycle: 1:1
Medium: HSL_2450_181020 Medium parameters used: $f = 2437$ MHz; $\sigma = 1.742$ S/m; $\epsilon_r = 39.318$;
 $\rho = 1000$ kg/m³
Ambient Temperature : 23.4 °C; Liquid Temperature : 22.8 °C

DASY5 Configuration:

- Probe: EX3DV4 - SN3819; ConvF(7.4, 7.4, 7.4); Calibrated: 2018.01.31;
- Sensor-Surface: 1.4mm (Mechanical Surface Detection)
- Electronics: DAE4 Sn1437; Calibrated: 2018.10.15
- Phantom: SAM1; Type: QD000P40CD; Serial: TP:1670
- Measurement SW: DASY52, Version 52.8 (8); SEMCAD X Version 14.6.10 (7331)

Ch6/Area Scan (81x161x1): Interpolated grid: dx=12mm, dy=12mm
Maximum value of SAR (interpolated) = 0.417 W/kg

Ch6/Zoom Scan (7x7x7)/Cube 0: Measurement grid: dx=5mm, dy=5mm, dz=5mm
Reference Value = 0.7900 V/m; Power Drift = 0.01 dB
Peak SAR (extrapolated) = 0.636 W/kg
SAR(1 g) = 0.298 W/kg; SAR(10 g) = 0.122 W/kg
Maximum value of SAR (measured) = 0.423 W/kg



0 dB = 0.423 W/kg

19_WLAN5GHz_802.11a 6Mbps_Left Cheek_Ch60

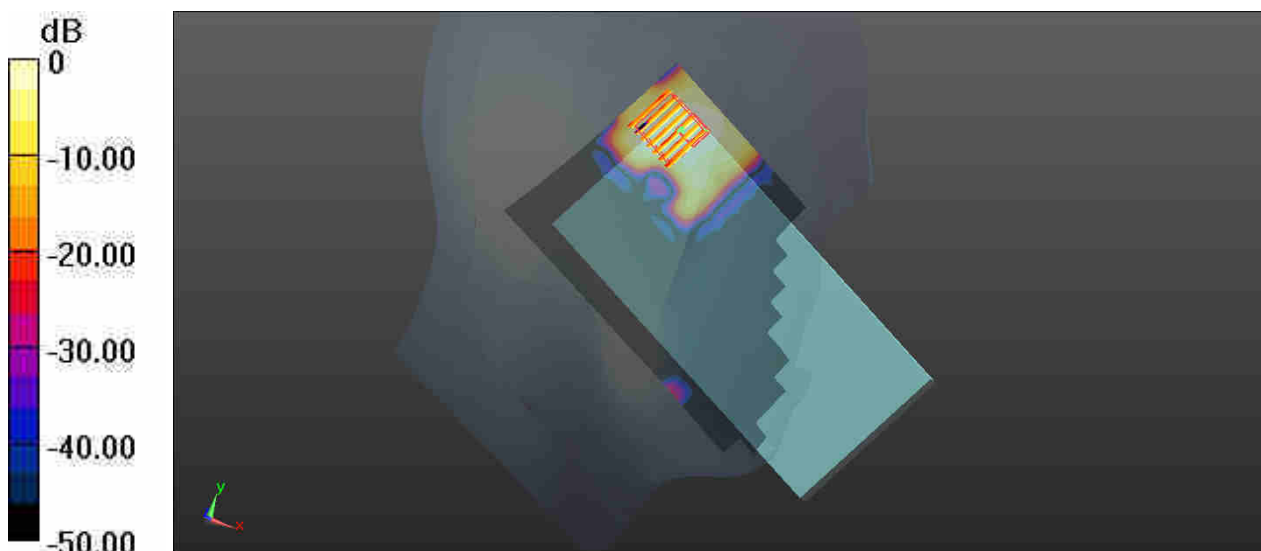
Communication System: UID 0, WIFI (0); Frequency: 5300 MHz; Duty Cycle: 1:1.063
Medium: HSL_5250_181020 Medium parameters used: $f = 5300$ MHz; $\sigma = 4.647$ S/m; $\epsilon_r = 36.695$;
 $\rho = 1000$ kg/m³
Ambient Temperature : 23.4 °C; Liquid Temperature : 22.5 °C

DASY5 Configuration:

- Probe: EX3DV4 - SN3819; ConvF(5.15, 5.15, 5.15); Calibrated: 2018.01.31;
- Sensor-Surface: 1.4mm (Mechanical Surface Detection)
- Electronics: DAE4 Sn1437; Calibrated: 2018.10.15
- Phantom: SAM1; Type: QD000P40CD; Serial: TP:1670
- Measurement SW: DASY52, Version 52.8 (8); SEMCAD X Version 14.6.10 (7331)

Ch60/Area Scan (101x191x1): Interpolated grid: dx=10mm, dy=10mm
Maximum value of SAR (interpolated) = 0.556 W/kg

Ch60/Zoom Scan (7x7x7)/Cube 0: Measurement grid: dx=4mm, dy=4mm, dz=1.4mm
Reference Value = 0.2750 V/m; Power Drift = 0.09 dB
Peak SAR (extrapolated) = 0.982 W/kg
SAR(1 g) = 0.290 W/kg; SAR(10 g) = 0.093 W/kg
Maximum value of SAR (measured) = 0.842 W/kg



0 dB = 0.556 W/kg

20_WLAN5GHz_802.11a 6Mbps_Left Cheek_Ch132

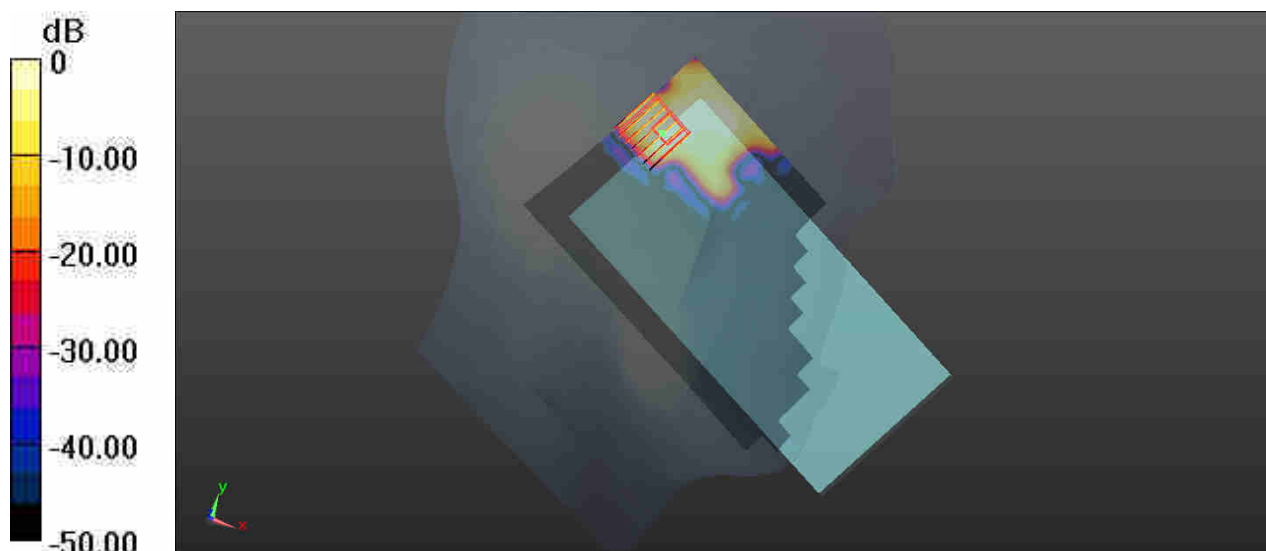
Communication System: UID 0, WIFI (0); Frequency: 5660 MHz; Duty Cycle: 1:1.063
 Medium: HSL_5600_181023 Medium parameters used: $f = 5660$ MHz; $\sigma = 5.26$ S/m; $\epsilon_r = 36.102$; $\rho = 1000$ kg/m³
 Ambient Temperature : 23.4 °C; Liquid Temperature : 22.6 °C

DASY5 Configuration:

- Probe: EX3DV4 - SN3819; ConvF(4.78, 4.78, 4.78); Calibrated: 2018.01.31;
- Sensor-Surface: 1.4mm (Mechanical Surface Detection)
- Electronics: DAE4 Sn1437; Calibrated: 2018.10.15
- Phantom: SAM1; Type: QD000P40CD; Serial: TP:1670
- Measurement SW: DASY52, Version 52.8 (8); SEMCAD X Version 14.6.10 (7331)

Ch132/Area Scan (101x191x1): Interpolated grid: dx=10mm, dy=10mm
 Maximum value of SAR (interpolated) = 0.763 W/kg

Ch132/Zoom Scan (7x7x7)/Cube 0: Measurement grid: dx=4mm, dy=4mm, dz=1.4mm
 Reference Value = 0 V/m; Power Drift = 0.04 dB
 Peak SAR (extrapolated) = 2.10 W/kg
SAR(1 g) = 0.261 W/kg; SAR(10 g) = 0.069 W/kg
 Maximum value of SAR (measured) = 0.625 W/kg



0 dB = 0.763 W/kg

21_WLAN5GHz_802.11a 6Mbps_Left Tilted_Ch157

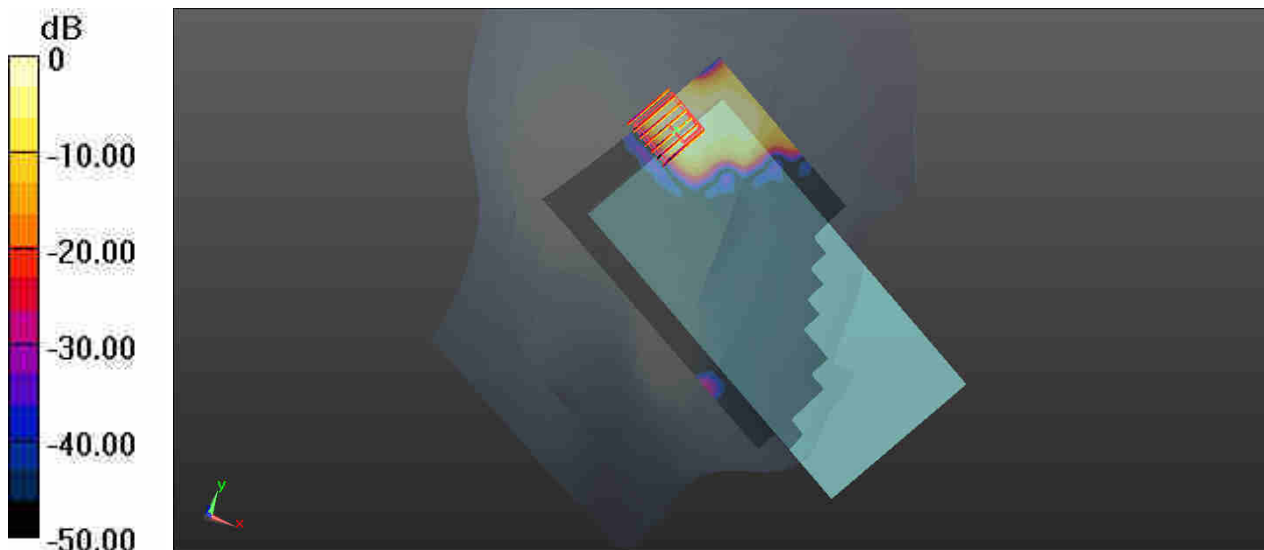
Communication System: UID 0, WIFI (0); Frequency: 5785 MHz; Duty Cycle: 1:1.063
Medium: HSL_5750_181024 Medium parameters used: $f = 5785$ MHz; $\sigma = 5.333$ S/m; $\epsilon_r = 35.097$;
 $\rho = 1000$ kg/m³
Ambient Temperature : 23.4 °C; Liquid Temperature : 22.7 °C

DASY5 Configuration:

- Probe: EX3DV4 - SN3819; ConvF(4.8, 4.8, 4.8); Calibrated: 2018.01.31;
- Sensor-Surface: 1.4mm (Mechanical Surface Detection)
- Electronics: DAE4 Sn1437; Calibrated: 2018.10.15
- Phantom: SAM1; Type: QD000P40CD; Serial: TP:1670
- Measurement SW: DASY52, Version 52.8 (8); SEMCAD X Version 14.6.10 (7331)

Ch157/Area Scan (101x191x1): Interpolated grid: dx=10mm, dy=10mm
Maximum value of SAR (interpolated) = 0.801 W/kg

Ch157/Zoom Scan (7x7x7)/Cube 0: Measurement grid: dx=4mm, dy=4mm, dz=1.4mm
Reference Value = 0 V/m; Power Drift = 0.04 dB
Peak SAR (extrapolated) = 0.997 W/kg
SAR(1 g) = 0.263 W/kg; SAR(10 g) = 0.070 W/kg
Maximum value of SAR (measured) = 0.619 W/kg



0 dB = 0.801 W/kg

22_Bluetooth_DH5 1Mbps_Left Cheek_Ch39

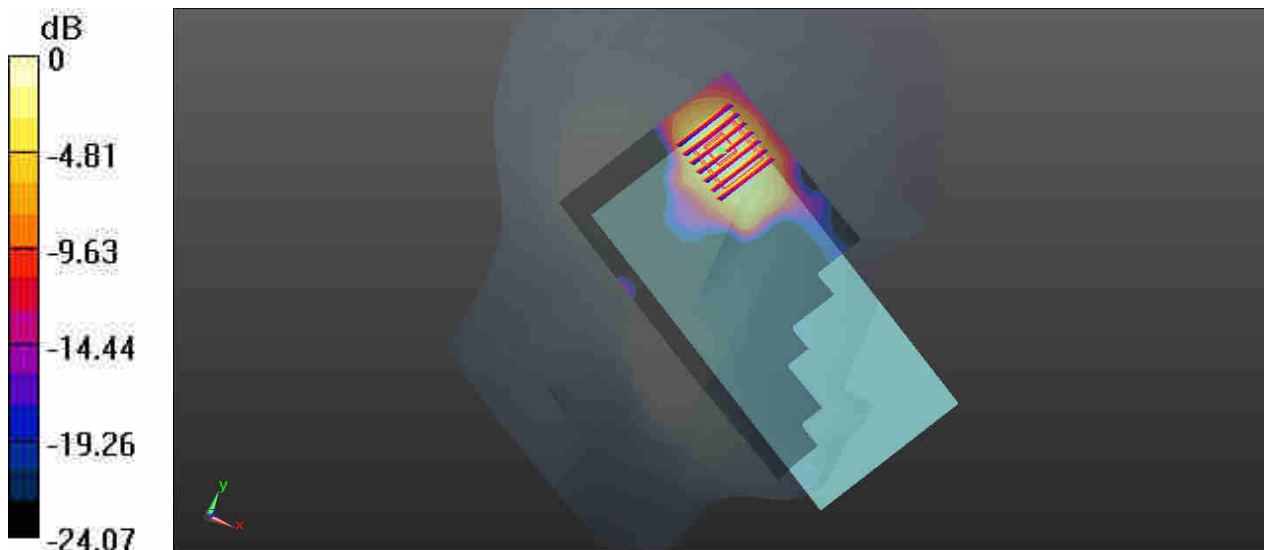
Communication System: UID 0, Bluetooth (0); Frequency: 2441 MHz; Duty Cycle: 1:1.298
Medium: HSL_2450_181020 Medium parameters used: $f = 2441$ MHz; $\sigma = 1.747$ S/m; $\epsilon_r = 39.296$;
 $\rho = 1000$ kg/m³
Ambient Temperature : 23.4 °C; Liquid Temperature : 22.8 °C

DASY5 Configuration:

- Probe: EX3DV4 - SN3819; ConvF(7.4, 7.4, 7.4); Calibrated: 2018.01.31;
- Sensor-Surface: 1.4mm (Mechanical Surface Detection)
- Electronics: DAE4 Sn1437; Calibrated: 2018.10.15
- Phantom: SAM1; Type: QD000P40CD; Serial: TP:1670
- Measurement SW: DASY52, Version 52.8 (8); SEMCAD X Version 14.6.10 (7331)

Ch39/Area Scan (81x161x1): Interpolated grid: dx=12mm, dy=12mm
Maximum value of SAR (interpolated) = 0.187 W/kg

Ch39/Zoom Scan (7x7x7)/Cube 0: Measurement grid: dx=5mm, dy=5mm, dz=5mm
Reference Value = 0.1250 V/m; Power Drift = 0.07 dB
Peak SAR (extrapolated) = 0.271 W/kg
SAR(1 g) = 0.114 W/kg; SAR(10 g) = 0.052 W/kg
Maximum value of SAR (measured) = 0.179 W/kg



0 dB = 0.179 W/kg

23_GSM850_GPRS(4 Tx slots)_Back_10mm_Ch251

Communication System: UID 0, GPRS/EDGE12 (0); Frequency: 848.8 MHz; Duty Cycle: 1:2.08
 Medium: MSL_835_181015 Medium parameters used: $f = 849 \text{ MHz}$; $\sigma = 0.999 \text{ S/m}$; $\epsilon_r = 56.134$; $\rho = 1000 \text{ kg/m}^3$

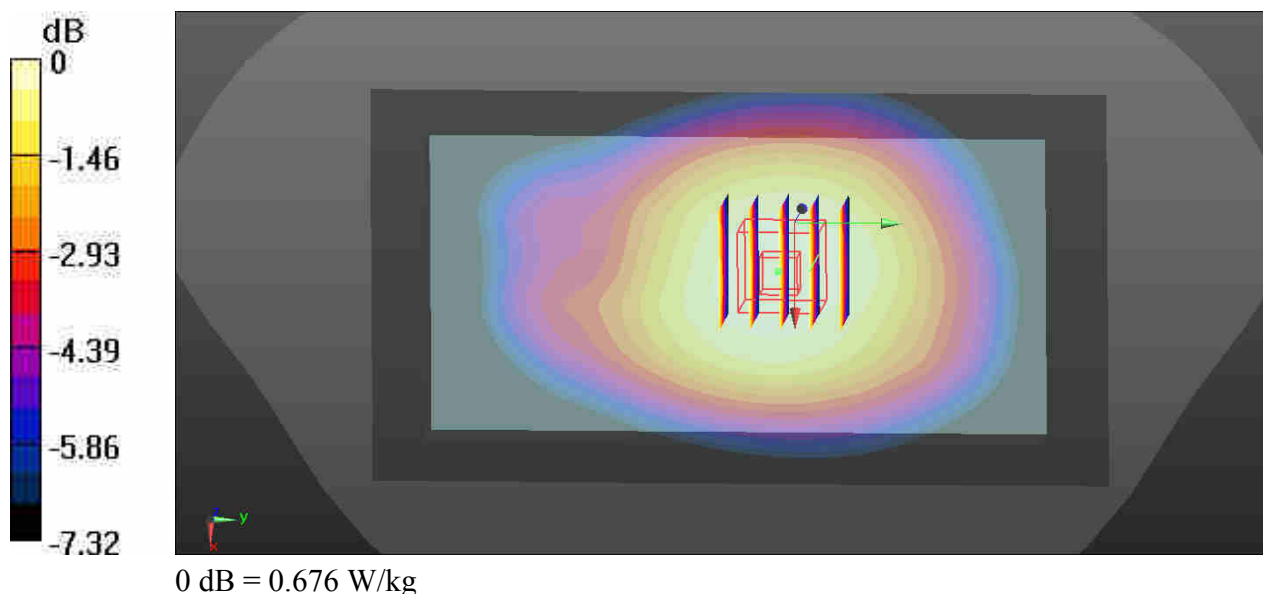
Ambient Temperature : 23.5 °C; Liquid Temperature : 22.4 °C

DASY5 Configuration:

- Probe: EX3DV4 - SN3819; ConvF(9.49, 9.49, 9.49); Calibrated: 2018.01.31;
- Sensor-Surface: 1.4mm (Mechanical Surface Detection)
- Electronics: DAE4 Sn1437; Calibrated: 2018.10.15
- Phantom: SAM1; Type: QD000P40CD; Serial: TP:1670
- Measurement SW: DASY52, Version 52.8 (8); SEMCAD X Version 14.6.10 (7331)

Ch251/Area Scan (71x131x1): Interpolated grid: dx=15mm, dy=15mm
 Maximum value of SAR (interpolated) = 0.676 W/kg

Ch251/Zoom Scan (5x5x7)/Cube 0: Measurement grid: dx=8mm, dy=8mm, dz=5mm
 Reference Value = 3.396 V/m; Power Drift = 0.03 dB
 Peak SAR (extrapolated) = 0.727 W/kg
SAR(1 g) = 0.586 W/kg; SAR(10 g) = 0.451 W/kg
 Maximum value of SAR (measured) = 0.662 W/kg



24_GSM1900_GPRS(2 Tx slots)_Back_10mm_Ch810

Communication System: UID 0, GPRS/EDGE10 (0); Frequency: 1909.8 MHz; Duty Cycle: 1:4.15
Medium: MSL_1900_181025 Medium parameters used: $f = 1910$ MHz; $\sigma = 1.596$ S/m; $\epsilon_r = 54.18$; $\rho = 1000$ kg/m³

Ambient Temperature : 23.5 °C; Liquid Temperature : 22.5 °C

DASY5 Configuration:

- Probe: EX3DV4 - SN3819; ConvF(7.69, 7.69, 7.69); Calibrated: 2018.01.31;
- Sensor-Surface: 1.4mm (Mechanical Surface Detection)
- Electronics: DAE4 Sn1437; Calibrated: 2018.10.15
- Phantom: SAM1; Type: QD000P40CD; Serial: TP:1670
- Measurement SW: DASY52, Version 52.8 (8); SEMCAD X Version 14.6.10 (7331)

Ch810/Area Scan (71x131x1): Interpolated grid: dx=15mm, dy=15mm

Maximum value of SAR (interpolated) = 1.17 W/kg

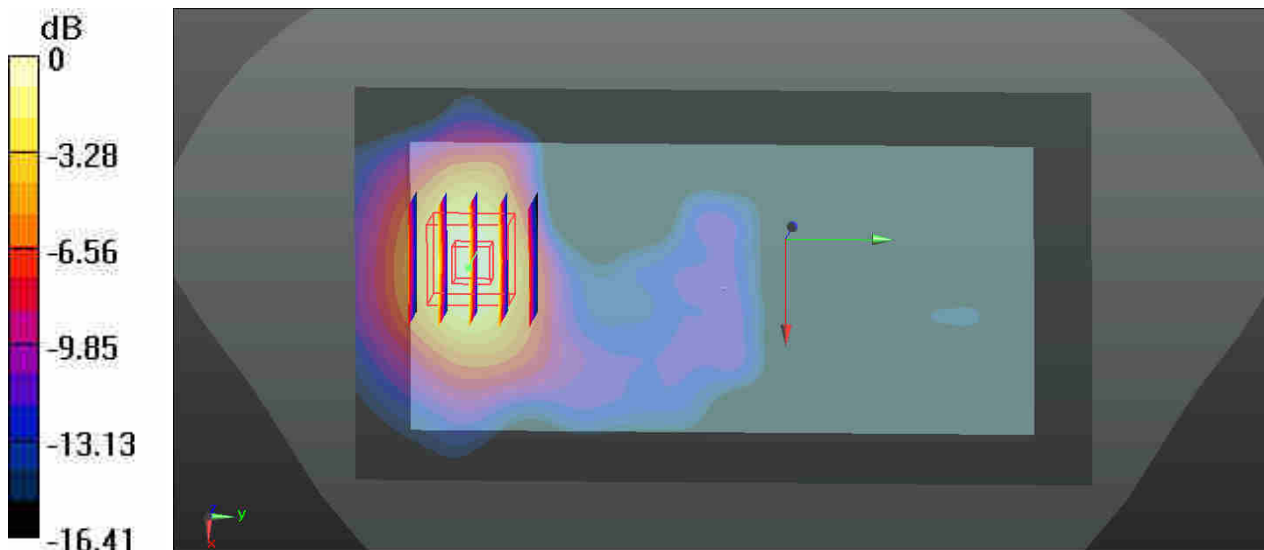
Ch810/Zoom Scan (5x5x7)/Cube 0: Measurement grid: dx=8mm, dy=8mm, dz=5mm

Reference Value = 2.397 V/m; Power Drift = 0.02 dB

Peak SAR (extrapolated) = 1.39 W/kg

SAR(1 g) = 0.834 W/kg; SAR(10 g) = 0.458 W/kg

Maximum value of SAR (measured) = 1.11 W/kg



0 dB = 1.17 W/kg

25_WCDMA V_RMC 12.2Kbps_Back_10mm_Ch4233

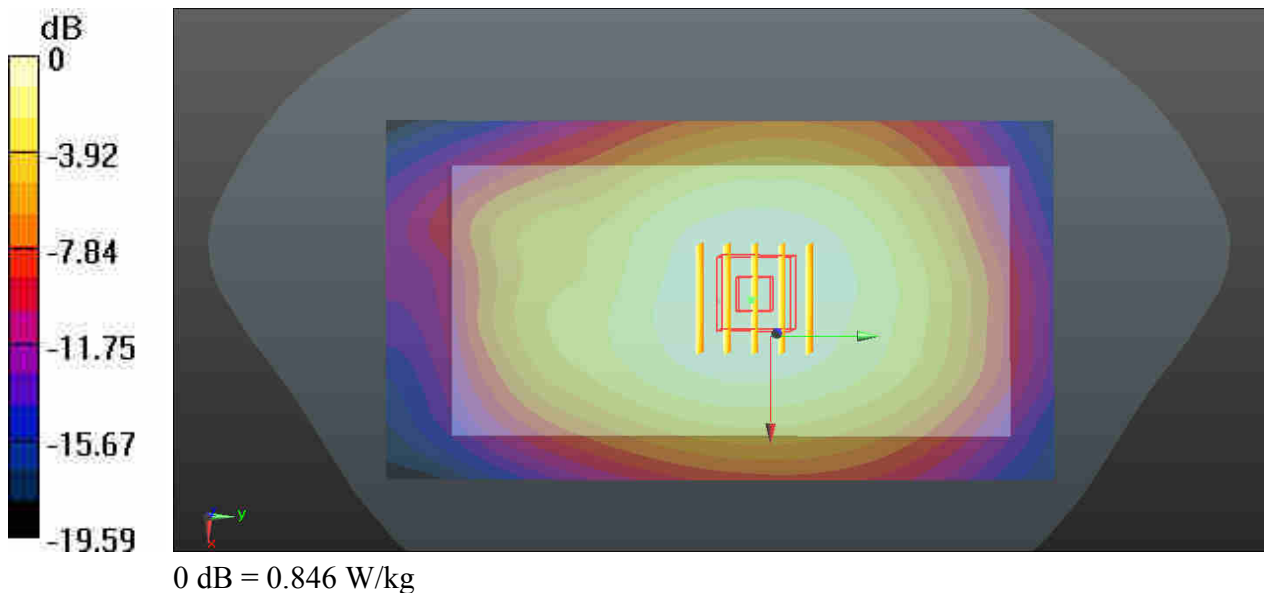
Communication System: UID 0, UMTS (0); Frequency: 846.6 MHz; Duty Cycle: 1:1
Medium: MSL_835_181015 Medium parameters used: $f = 847$ MHz; $\sigma = 0.996$ S/m; $\epsilon_r = 56.151$; $\rho = 1000$ kg/m³
Ambient Temperature : 23.5 °C; Liquid Temperature : 22.4 °C

DASY5 Configuration:

- Probe: EX3DV4 - SN3819; ConvF(9.49, 9.49, 9.49); Calibrated: 2018.01.31;
- Sensor-Surface: 1.4mm (Mechanical Surface Detection)
- Electronics: DAE4 Sn1437; Calibrated: 2018.10.15
- Phantom: SAM1; Type: QD000P40CD; Serial: TP:1670
- Measurement SW: DASY52, Version 52.8 (8); SEMCAD X Version 14.6.10 (7331)

Ch4233/Area Scan (71x131x1): Interpolated grid: dx=15mm, dy=15mm
Maximum value of SAR (interpolated) = 0.846 W/kg

Ch4233/Zoom Scan (5x5x7)/Cube 0: Measurement grid: dx=8mm, dy=8mm, dz=5mm
Reference Value = 3.441 V/m; Power Drift = 0.06 dB
Peak SAR (extrapolated) = 0.921 W/kg
SAR(1 g) = 0.735 W/kg; SAR(10 g) = 0.564 W/kg
Maximum value of SAR (measured) = 0.842 W/kg



26_WCDMA IV_RMC 12.2Kbps_Back_10mm_Ch1312

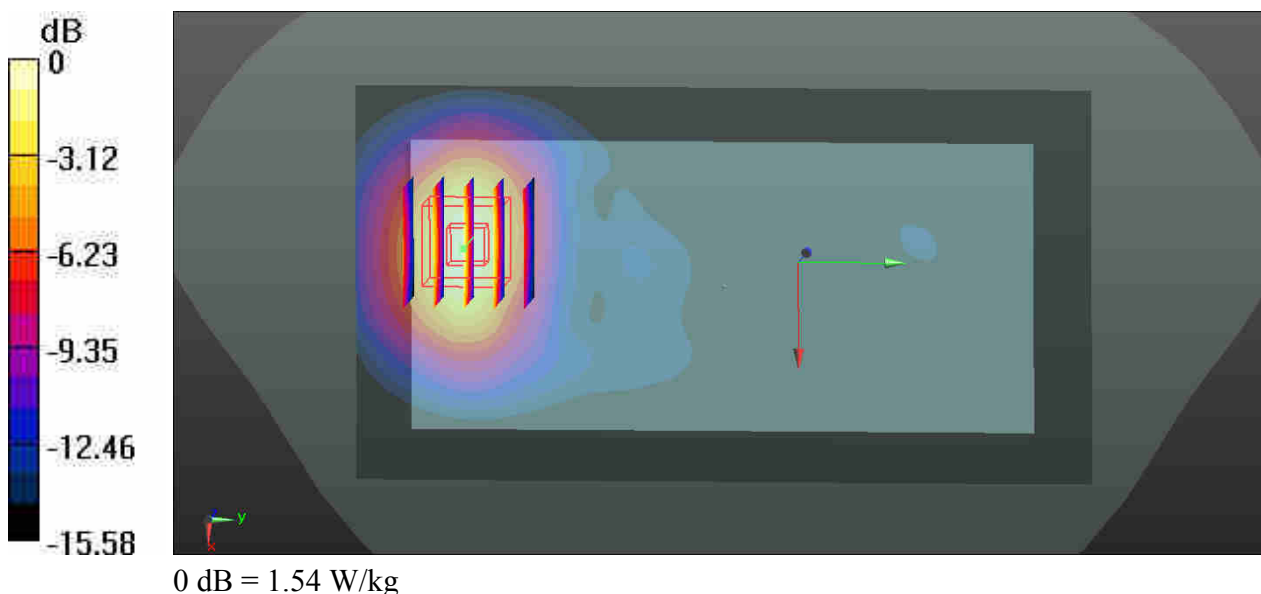
Communication System: UID 0, UMTS (0); Frequency: 1712.4 MHz; Duty Cycle: 1:1
Medium: MSL_1750_181026 Medium parameters used: $f = 1712.4$ MHz; $\sigma = 1.47$ S/m; $\epsilon_r = 52.06$;
 $\rho = 1000$ kg/m³
Ambient Temperature : 23.5 °C ; Liquid Temperature : 22.6 °C

DASY5 Configuration:

- Probe: EX3DV4 - SN3819; ConvF(7.93, 7.93, 7.93); Calibrated: 2018.01.31;
- Sensor-Surface: 1.4mm (Mechanical Surface Detection)
- Electronics: DAE4 Sn1437; Calibrated: 2018.10.15
- Phantom: SAM1; Type: QD000P40CD; Serial: TP:1670
- Measurement SW: DASY52, Version 52.8 (8); SEMCAD X Version 14.6.10 (7331)

Ch1312/Area Scan (71x131x1): Interpolated grid: dx=15mm, dy=15mm
Maximum value of SAR (interpolated) = 1.54 W/kg

Ch1312/Zoom Scan (5x5x7)/Cube 0: Measurement grid: dx=8mm, dy=8mm, dz=5mm
Reference Value = 3.760 V/m; Power Drift = 0.09 dB
Peak SAR (extrapolated) = 1.86 W/kg
SAR(1 g) = 1.14 W/kg; SAR(10 g) = 0.630 W/kg
Maximum value of SAR (measured) = 1.51 W/kg



27_WCDMA II_RMC 12.2Kbps_Back_10mm_Ch9400

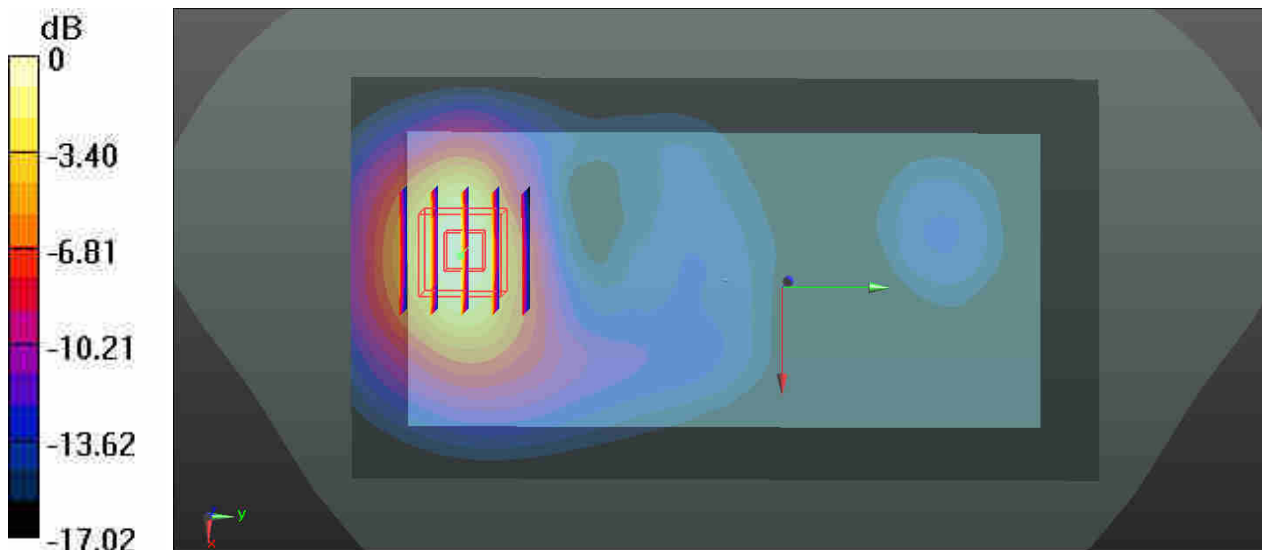
Communication System: UID 0, UMTS (0); Frequency: 1880 MHz; Duty Cycle: 1:1
Medium: MSL_1900_181025 Medium parameters used: $f = 1880$ MHz; $\sigma = 1.562$ S/m; $\epsilon_r = 54.285$;
 $\rho = 1000$ kg/m³
Ambient Temperature : 23.5 °C; Liquid Temperature : 22.5 °C

DASY5 Configuration:

- Probe: EX3DV4 - SN3819; ConvF(7.69, 7.69, 7.69); Calibrated: 2018.01.31;
- Sensor-Surface: 1.4mm (Mechanical Surface Detection)
- Electronics: DAE4 Sn1437; Calibrated: 2018.10.15
- Phantom: SAM1; Type: QD000P40CD; Serial: TP:1670
- Measurement SW: DASY52, Version 52.8 (8); SEMCAD X Version 14.6.10 (7331)

Ch9400/Area Scan (71x131x1): Interpolated grid: dx=15mm, dy=15mm
Maximum value of SAR (interpolated) = 1.73 W/kg

Ch9400/Zoom Scan (5x5x7)/Cube 0: Measurement grid: dx=8mm, dy=8mm, dz=5mm
Reference Value = 3.025 V/m; Power Drift = 0.08 dB
Peak SAR (extrapolated) = 2.07 W/kg
SAR(1 g) = 1.22 W/kg; SAR(10 g) = 0.660 W/kg
Maximum value of SAR (measured) = 1.67 W/kg



0 dB = 1.67 W/kg

28_CDMA2000 BC0_RTAP 153.6Kbps_Back_10mm_Ch384

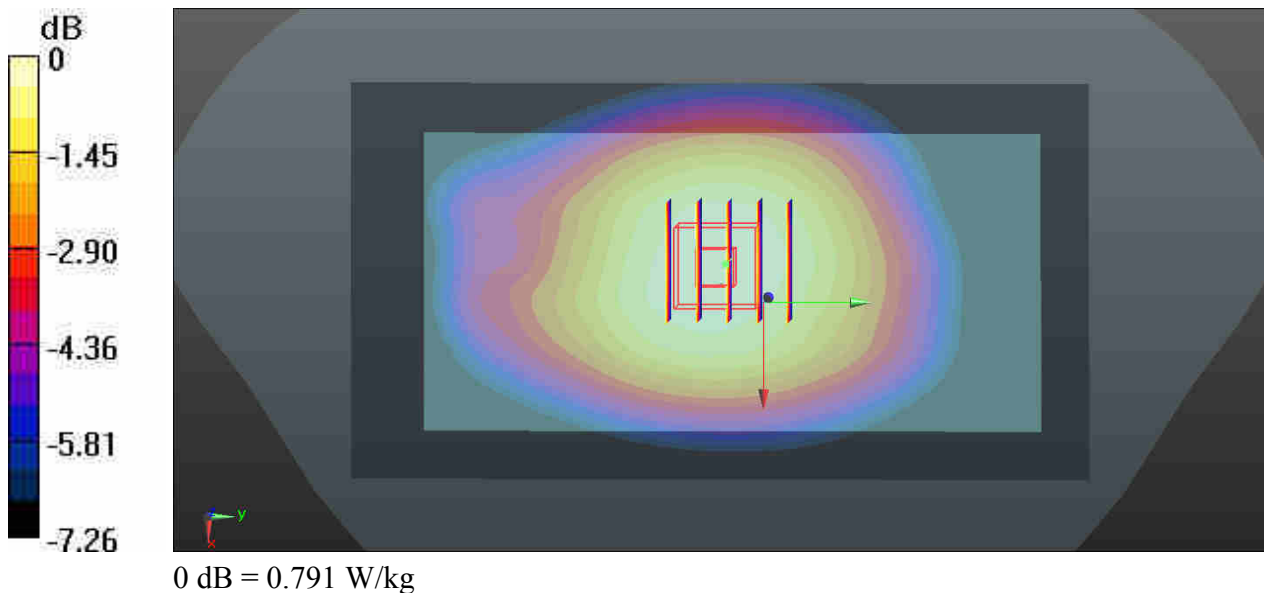
Communication System: UID 0, CDMA2000 (0); Frequency: 836.52 MHz; Duty Cycle: 1:1
Medium: MSL_835_181015 Medium parameters used: $f = 837$ MHz; $\sigma = 0.983$ S/m; $\epsilon_r = 56.219$; $\rho = 1000$ kg/m³
Ambient Temperature : 23.5 °C; Liquid Temperature : 22.4 °C

DASY5 Configuration:

- Probe: EX3DV4 - SN3819; ConvF(9.49, 9.49, 9.49); Calibrated: 2018.01.31;
- Sensor-Surface: 1.4mm (Mechanical Surface Detection)
- Electronics: DAE4 Sn1437; Calibrated: 2018.10.15
- Phantom: SAM1; Type: QD000P40CD; Serial: TP:1670
- Measurement SW: DASY52, Version 52.8 (8); SEMCAD X Version 14.6.10 (7331)

Ch384/Area Scan (71x131x1): Interpolated grid: dx=15mm, dy=15mm
Maximum value of SAR (interpolated) = 0.789 W/kg

Ch384/Zoom Scan (5x5x7)/Cube 0: Measurement grid: dx=8mm, dy=8mm, dz=5mm
Reference Value = 3.883 V/m; Power Drift = 0.09 dB
Peak SAR (extrapolated) = 0.864 W/kg
SAR(1 g) = 0.693 W/kg; SAR(10 g) = 0.535 W/kg
Maximum value of SAR (measured) = 0.791 W/kg



29_CDMA2000 BC10_RTAP 153.6Kbps_Back_10mm_Ch580

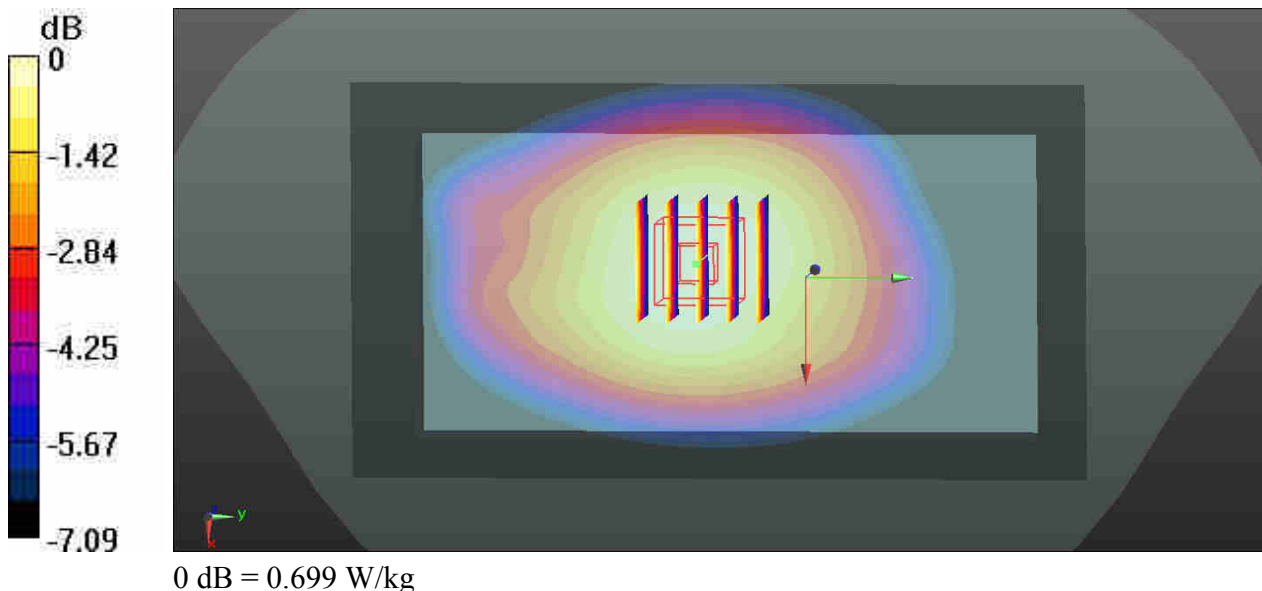
Communication System: UID 0, CDMA2000 (0); Frequency: 820.5 MHz; Duty Cycle: 1:1
Medium: MSL_835_181015 Medium parameters used: $f = 820.5$ MHz; $\sigma = 0.963$ S/m; $\epsilon_r = 56.34$; $\rho = 1000$ kg/m³
Ambient Temperature : 23.5 °C; Liquid Temperature : 22.4 °C

DASY5 Configuration:

- Probe: EX3DV4 - SN3819; ConvF(9.49, 9.49, 9.49); Calibrated: 2018.01.31;
- Sensor-Surface: 1.4mm (Mechanical Surface Detection)
- Electronics: DAE4 Sn1437; Calibrated: 2018.10.15
- Phantom: SAM1; Type: QD000P40CD; Serial: TP:1670
- Measurement SW: DASY52, Version 52.8 (8); SEMCAD X Version 14.6.10 (7331)

Ch580/Area Scan (71x131x1): Interpolated grid: dx=15mm, dy=15mm
Maximum value of SAR (interpolated) = 0.699 W/kg

Ch580/Zoom Scan (5x5x7)/Cube 0: Measurement grid: dx=8mm, dy=8mm, dz=5mm
Reference Value = 3.340 V/m; Power Drift = 0.09 dB
Peak SAR (extrapolated) = 0.754 W/kg
SAR(1 g) = 0.609 W/kg; SAR(10 g) = 0.472 W/kg
Maximum value of SAR (measured) = 0.694 W/kg



30_CDMA2000 BC1_RTAP 153.6Kbps_Back_10mm_Ch25

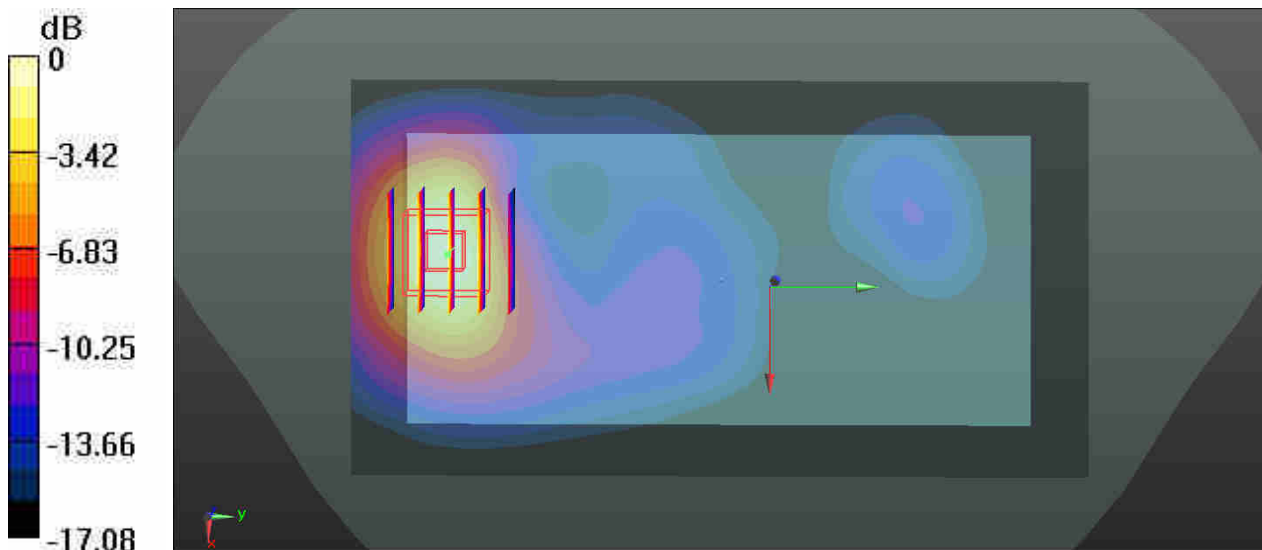
Communication System: UID 0, CDMA2000 (0); Frequency: 1851.25 MHz; Duty Cycle: 1:1
Medium: MSL_1900_181025 Medium parameters used: $f = 1851.25$ MHz; $\sigma = 1.529$ S/m; $\epsilon_r = 54.389$; $\rho = 1000$ kg/m³
Ambient Temperature : 23.5 °C; Liquid Temperature : 22.5 °C

DASY5 Configuration:

- Probe: EX3DV4 - SN3819; ConvF(7.69, 7.69, 7.69); Calibrated: 2018.01.31;
- Sensor-Surface: 1.4mm (Mechanical Surface Detection)
- Electronics: DAE4 Sn1437; Calibrated: 2018.10.15
- Phantom: SAM1; Type: QD000P40CD; Serial: TP:1670
- Measurement SW: DASY52, Version 52.8 (8); SEMCAD X Version 14.6.10 (7331)

Ch25/Area Scan (71x131x1): Interpolated grid: dx=15mm, dy=15mm
Maximum value of SAR (interpolated) = 1.63 W/kg

Ch25/Zoom Scan (5x5x7)/Cube 0: Measurement grid: dx=8mm, dy=8mm, dz=5mm
Reference Value = 3.160 V/m; Power Drift = 0.07 dB
Peak SAR (extrapolated) = 1.91 W/kg
SAR(1 g) = 1.15 W/kg; SAR(10 g) = 0.627 W/kg
Maximum value of SAR (measured) = 1.56 W/kg



0 dB = 1.56 W/kg

31_LTE Band 12_10M_QPSK_1RB_25Offset_Back_10mm_Ch23095

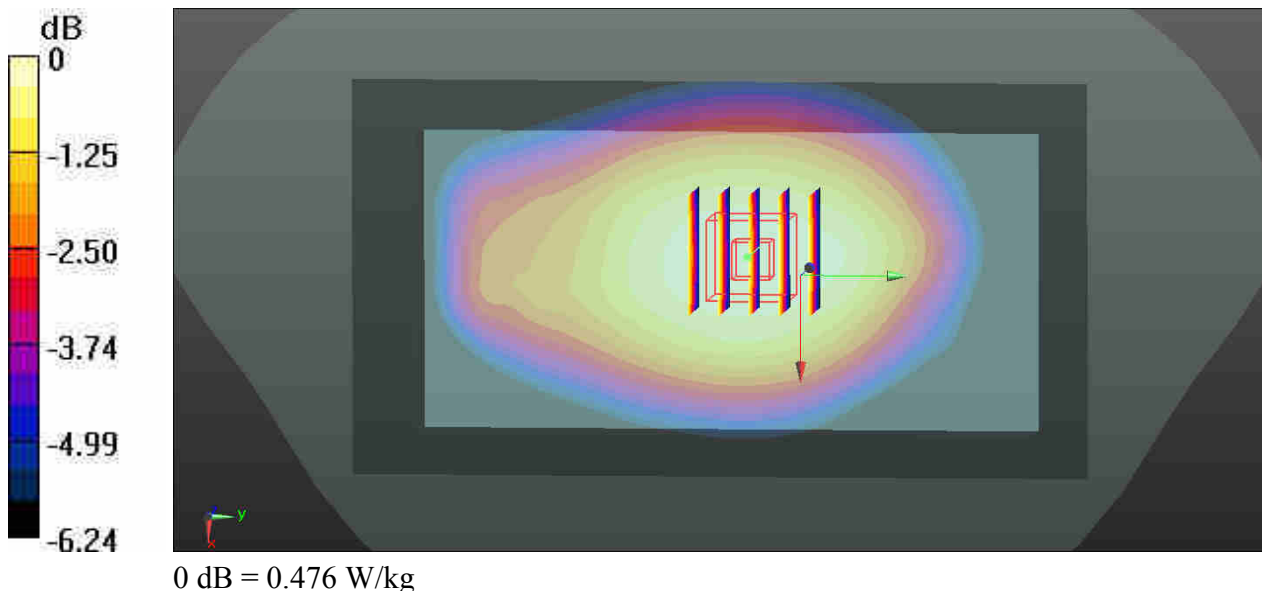
Communication System: UID 0, LTE (0); Frequency: 707.5 MHz; Duty Cycle: 1:1
Medium: MSL_750_181101 Medium parameters used: $f = 707.5$ MHz; $\sigma = 0.939$ S/m; $\epsilon_r = 55.571$;
 $\rho = 1000$ kg/m³
Ambient Temperature : 23.4 °C; Liquid Temperature : 22.5 °C

DASY5 Configuration:

- Probe: EX3DV4 - SN3819; ConvF(9.7, 9.7, 9.7); Calibrated: 2018.01.31;
- Sensor-Surface: 1.4mm (Mechanical Surface Detection)
- Electronics: DAE4 Sn1437; Calibrated: 2018.10.15
- Phantom: SAM1; Type: QD000P40CD; Serial: TP:1670
- Measurement SW: DASY52, Version 52.8 (8); SEMCAD X Version 14.6.10 (7331)

Ch23095/Area Scan (71x131x1): Interpolated grid: dx=15mm, dy=15mm
Maximum value of SAR (interpolated) = 0.476 W/kg

Ch23095/Zoom Scan (5x5x7)/Cube 0: Measurement grid: dx=8mm, dy=8mm, dz=5mm
Reference Value = 3.251 V/m; Power Drift = 0.01 dB
Peak SAR (extrapolated) = 0.506 W/kg
SAR(1 g) = 0.418 W/kg; SAR(10 g) = 0.334 W/kg
Maximum value of SAR (measured) = 0.470 W/kg



32_LTE Band 13_10M_QPSK_1RB_25Offset_Back_10mm_Ch23230

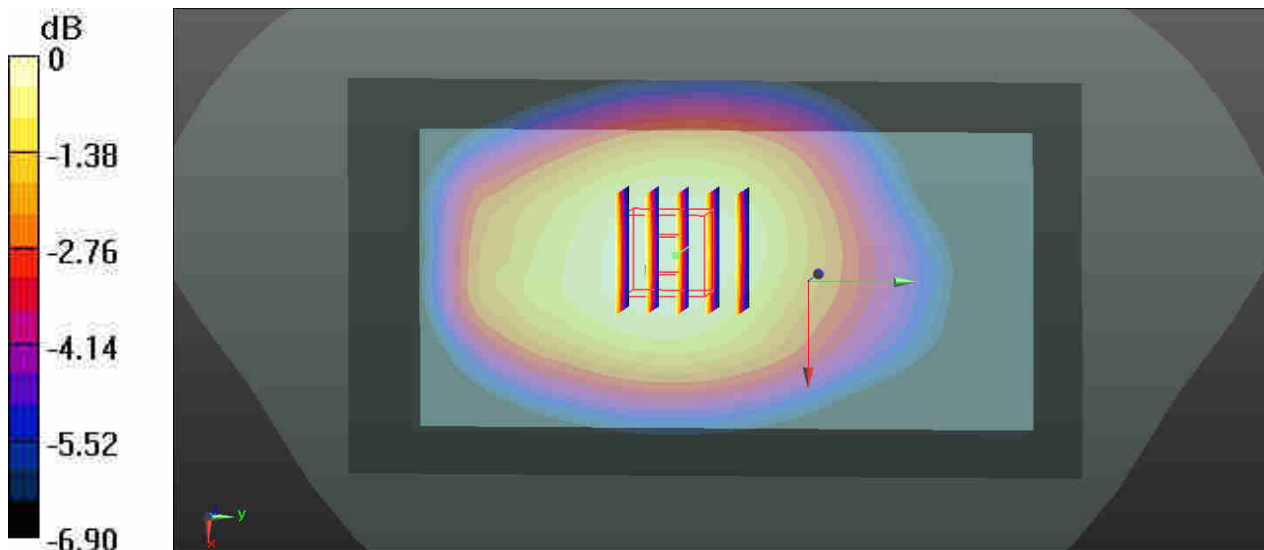
Communication System: UID 0, LTE (0); Frequency: 782 MHz; Duty Cycle: 1:1
Medium: MSL_750_181101 Medium parameters used: $f = 782$ MHz; $\sigma = 0.996$ S/m; $\epsilon_r = 53.986$; $\rho = 1000$ kg/m³
Ambient Temperature : 23.4 °C; Liquid Temperature : 22.5 °C

DASY5 Configuration:

- Probe: EX3DV4 - SN3819; ConvF(9.7, 9.7, 9.7); Calibrated: 2018.01.31;
- Sensor-Surface: 1.4mm (Mechanical Surface Detection)
- Electronics: DAE4 Sn1437; Calibrated: 2018.10.15
- Phantom: SAM1; Type: QD000P40CD; Serial: TP:1670
- Measurement SW: DASY52, Version 52.8 (8); SEMCAD X Version 14.6.10 (7331)

Ch23230/Area Scan (71x131x1): Interpolated grid: dx=15mm, dy=15mm
Maximum value of SAR (interpolated) = 0.618 W/kg

Ch23230/Zoom Scan (5x5x7)/Cube 0: Measurement grid: dx=8mm, dy=8mm, dz=5mm
Reference Value = 3.110 V/m; Power Drift = 0.06 dB
Peak SAR (extrapolated) = 0.667 W/kg
SAR(1 g) = 0.544 W/kg; SAR(10 g) = 0.426 W/kg
Maximum value of SAR (measured) = 0.616 W/kg



0 dB = 0.618 W/kg

33_LTE Band 5_10M_QPSK_1RB_0Offset_Back_10mm_Ch20525

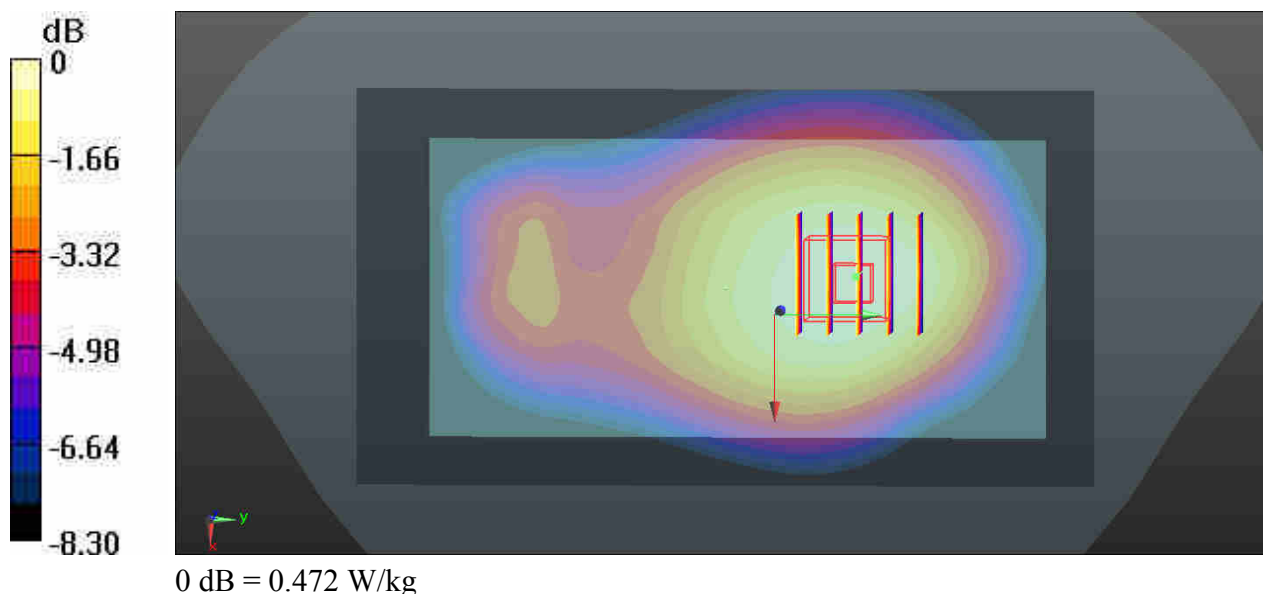
Communication System: UID 0, LTE (0); Frequency: 836.5 MHz; Duty Cycle: 1:1
 Medium: MSL_835_181015 Medium parameters used: $f = 836.5$ MHz; $\sigma = 0.983$ S/m; $\epsilon_r = 56.221$;
 $\rho = 1000$ kg/m³
 Ambient Temperature : 23.5 °C; Liquid Temperature : 22.4 °C

DASY5 Configuration:

- Probe: EX3DV4 - SN3819; ConvF(9.49, 9.49, 9.49); Calibrated: 2018.01.31;
- Sensor-Surface: 1.4mm (Mechanical Surface Detection)
- Electronics: DAE4 Sn1437; Calibrated: 2018.10.15
- Phantom: SAM1; Type: QD000P40CD; Serial: TP:1670
- Measurement SW: DASY52, Version 52.8 (8); SEMCAD X Version 14.6.10 (7331)

Ch20525/Area Scan (71x131x1): Interpolated grid: dx=15mm, dy=15mm
 Maximum value of SAR (interpolated) = 0.475 W/kg

Ch20525/Zoom Scan (5x5x7)/Cube 0: Measurement grid: dx=8mm, dy=8mm, dz=5mm
 Reference Value = 2.357 V/m; Power Drift = 0.09 dB
 Peak SAR (extrapolated) = 0.515 W/kg
SAR(1 g) = 0.412 W/kg; SAR(10 g) = 0.316 W/kg
 Maximum value of SAR (measured) = 0.472 W/kg



34_LTE Band 26_15M_QPSK_1RB_0Offset_Back_10mm_Ch26865

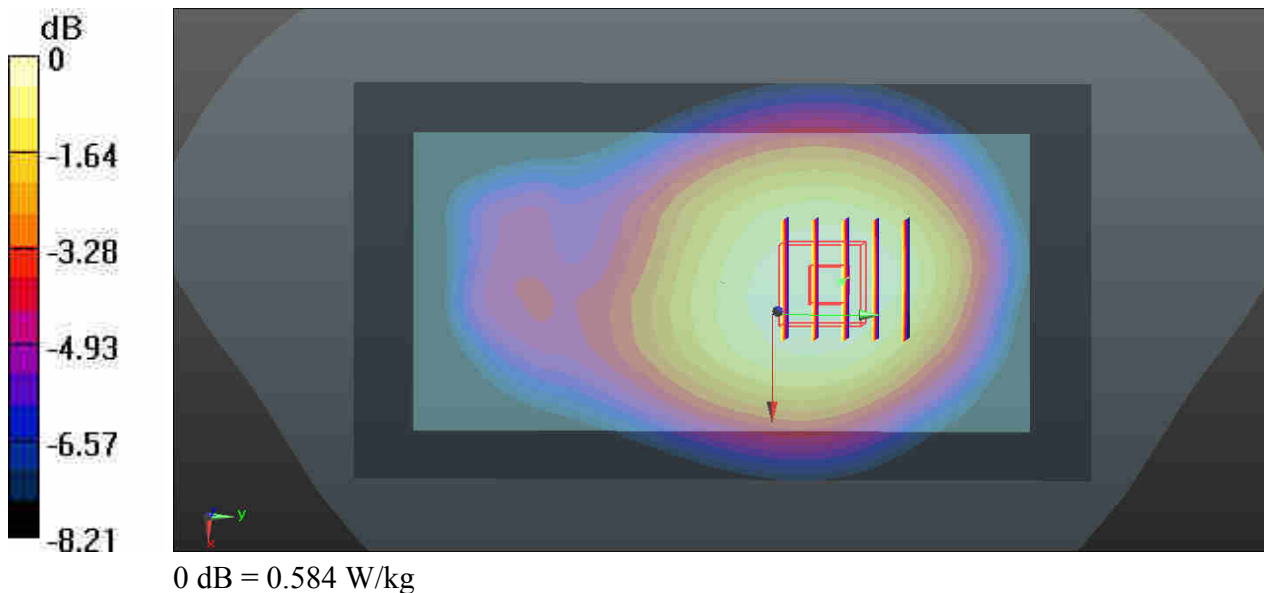
Communication System: UID 0, LTE (0); Frequency: 831.5 MHz; Duty Cycle: 1:1
Medium: MSL_835_181015 Medium parameters used: $f = 831.5$ MHz; $\sigma = 0.976$ S/m; $\epsilon_r = 56.257$;
 $\rho = 1000$ kg/m³
Ambient Temperature : 23.5 °C; Liquid Temperature : 22.4 °C

DASY5 Configuration:

- Probe: EX3DV4 - SN3819; ConvF(9.49, 9.49, 9.49); Calibrated: 2018.01.31;
- Sensor-Surface: 1.4mm (Mechanical Surface Detection)
- Electronics: DAE4 Sn1437; Calibrated: 2018.10.15
- Phantom: SAM1; Type: QD000P40CD; Serial: TP:1670
- Measurement SW: DASY52, Version 52.8 (8); SEMCAD X Version 14.6.10 (7331)

Ch26865/Area Scan (71x131x1): Interpolated grid: dx=15mm, dy=15mm
Maximum value of SAR (interpolated) = 0.585 W/kg

Ch26865/Zoom Scan (5x5x7)/Cube 0: Measurement grid: dx=8mm, dy=8mm, dz=5mm
Reference Value = 2.369 V/m; Power Drift = 0.02 dB
Peak SAR (extrapolated) = 0.637 W/kg
SAR(1 g) = 0.513 W/kg; SAR(10 g) = 0.394 W/kg
Maximum value of SAR (measured) = 0.584 W/kg



35_LTE Band 4_20M_QPSK_1RB_0Offset_Back_10mm_Ch20175

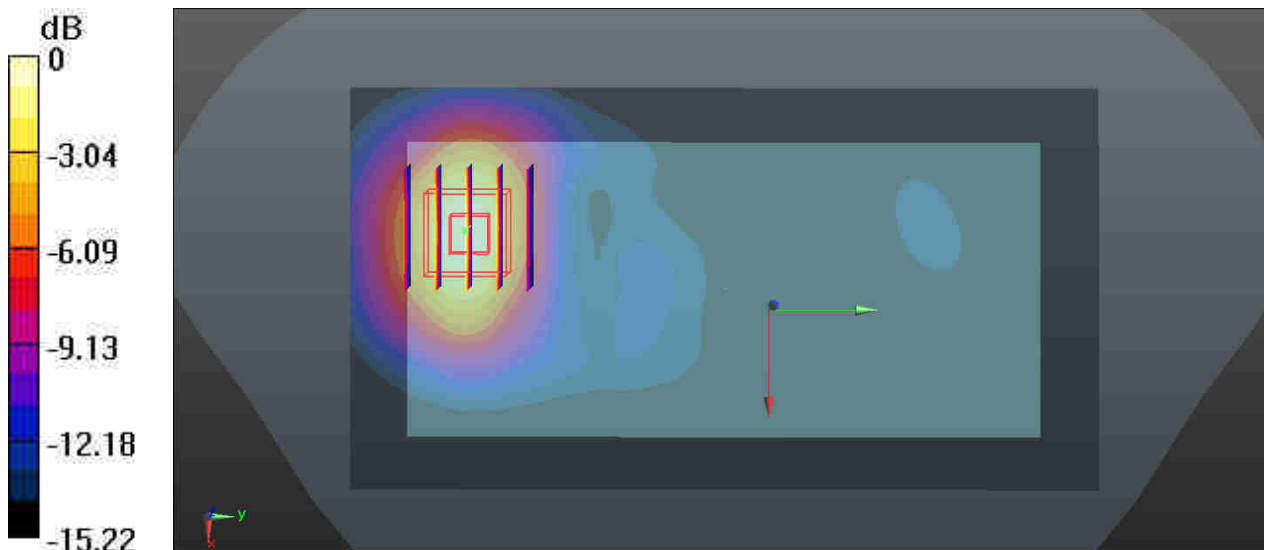
Communication System: UID 0, LTE (0); Frequency: 1732.5 MHz; Duty Cycle: 1:1
Medium: MSL_1750_181026 Medium parameters used: $f = 1732.5$ MHz; $\sigma = 1.492$ S/m; $\epsilon_r = 52.022$; $\rho = 1000$ kg/m³
Ambient Temperature : 23.5 °C; Liquid Temperature : 22.6 °C

DASY5 Configuration:

- Probe: EX3DV4 - SN3819; ConvF(7.93, 7.93, 7.93); Calibrated: 2018.01.31;
- Sensor-Surface: 1.4mm (Mechanical Surface Detection)
- Electronics: DAE4 Sn1437; Calibrated: 2018.10.15
- Phantom: SAM1; Type: QD000P40CD; Serial: TP:1670
- Measurement SW: DASY52, Version 52.8 (8); SEMCAD X Version 14.6.10 (7331)

Ch20175/Area Scan (71x131x1): Interpolated grid: dx=15mm, dy=15mm
Maximum value of SAR (interpolated) = 1.68 W/kg

Ch20175/Zoom Scan (5x5x7)/Cube 0: Measurement grid: dx=8mm, dy=8mm, dz=5mm
Reference Value = 4.584 V/m; Power Drift = 0.08 dB
Peak SAR (extrapolated) = 2.03 W/kg
SAR(1 g) = 1.26 W/kg; SAR(10 g) = 0.708 W/kg
Maximum value of SAR (measured) = 1.67 W/kg



0 dB = 1.67 W/kg

36_LTE Band 25_20M_QPSK_1RB_0Offset_Back_10mm_Ch26340

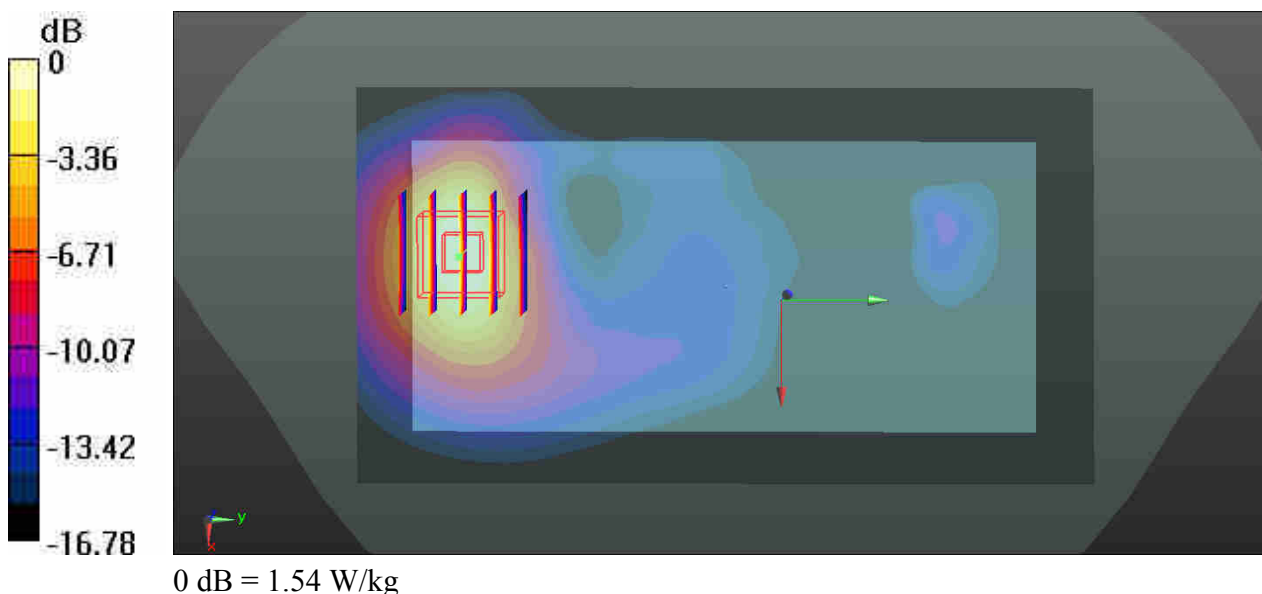
Communication System: UID 0, LTE (0); Frequency: 1880 MHz; Duty Cycle: 1:1
Medium: MSL_1900_181025 Medium parameters used: $f = 1880$ MHz; $\sigma = 1.562$ S/m; $\epsilon_r = 54.285$;
 $\rho = 1000$ kg/m³
Ambient Temperature : 23.5 °C; Liquid Temperature : 22.5 °C

DASY5 Configuration:

- Probe: EX3DV4 - SN3819; ConvF(7.69, 7.69, 7.69); Calibrated: 2018.01.31;
- Sensor-Surface: 1.4mm (Mechanical Surface Detection)
- Electronics: DAE4 Sn1437; Calibrated: 2018.10.15
- Phantom: SAM1; Type: QD000P40CD; Serial: TP:1670
- Measurement SW: DASY52, Version 52.8 (8); SEMCAD X Version 14.6.10 (7331)

Ch26340/Area Scan (71x131x1): Interpolated grid: dx=15mm, dy=15mm
Maximum value of SAR (interpolated) = 1.61 W/kg

Ch26340/Zoom Scan (5x5x7)/Cube 0: Measurement grid: dx=8mm, dy=8mm, dz=5mm
Reference Value = 2.991 V/m; Power Drift = 0.01 dB
Peak SAR (extrapolated) = 1.92 W/kg
SAR(1 g) = 1.15 W/kg; SAR(10 g) = 0.626 W/kg
Maximum value of SAR (measured) = 1.54 W/kg



37_LTE Band 2_20M_QPSK_50RB_0Offset_Back_10mm_Ch18700

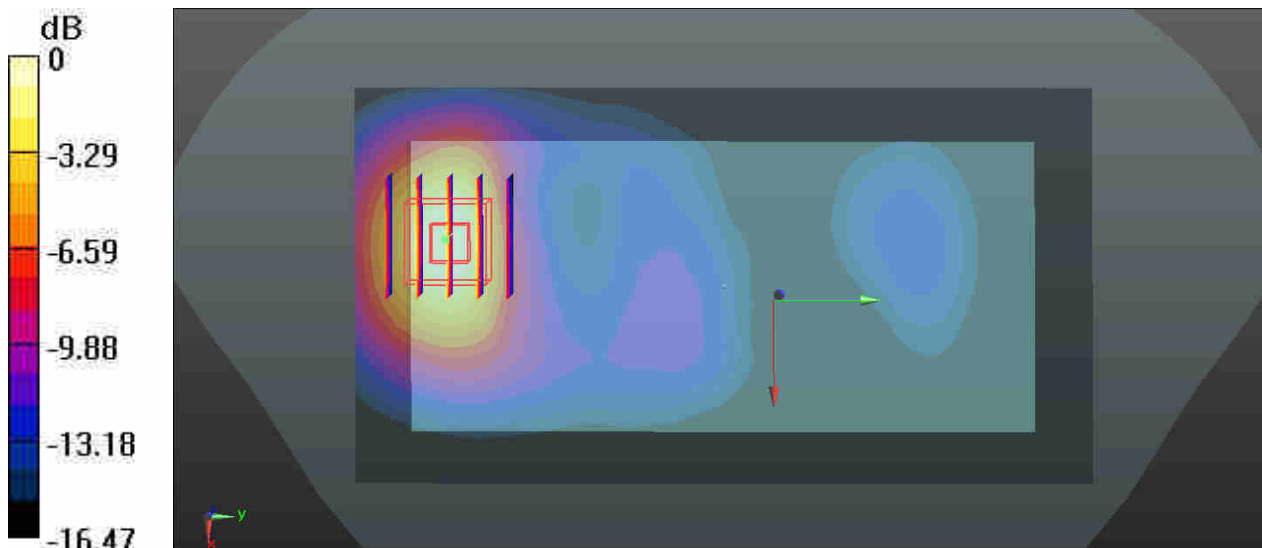
Communication System: UID 0, LTE (0); Frequency: 1860 MHz; Duty Cycle: 1:1
Medium: MSL_1900_181025 Medium parameters used: $f = 1860$ MHz; $\sigma = 1.539$ S/m; $\epsilon_r = 54.359$;
 $\rho = 1000$ kg/m³
Ambient Temperature : 23.5 °C; Liquid Temperature : 22.5 °C

DASY5 Configuration:

- Probe: EX3DV4 - SN3819; ConvF(7.69, 7.69, 7.69); Calibrated: 2018.01.31;
- Sensor-Surface: 1.4mm (Mechanical Surface Detection)
- Electronics: DAE4 Sn1437; Calibrated: 2018.10.15
- Phantom: SAM1; Type: QD000P40CD; Serial: TP:1670
- Measurement SW: DASY52, Version 52.8 (8); SEMCAD X Version 14.6.10 (7331)

Ch18700/Area Scan (71x131x1): Interpolated grid: dx=15mm, dy=15mm
Maximum value of SAR (interpolated) = 1.58 W/kg

Ch18700/Zoom Scan (5x5x7)/Cube 0: Measurement grid: dx=8mm, dy=8mm, dz=5mm
Reference Value = 3.795 V/m; Power Drift = 0.04 dB
Peak SAR (extrapolated) = 1.87 W/kg
SAR(1 g) = 1.12 W/kg; SAR(10 g) = 0.611 W/kg
Maximum value of SAR (measured) = 1.52 W/kg



0 dB = 1.52 W/kg

38_LTE Band 7_20M_QPSK_1RB_49Offset_Back_10mm_Ch20850

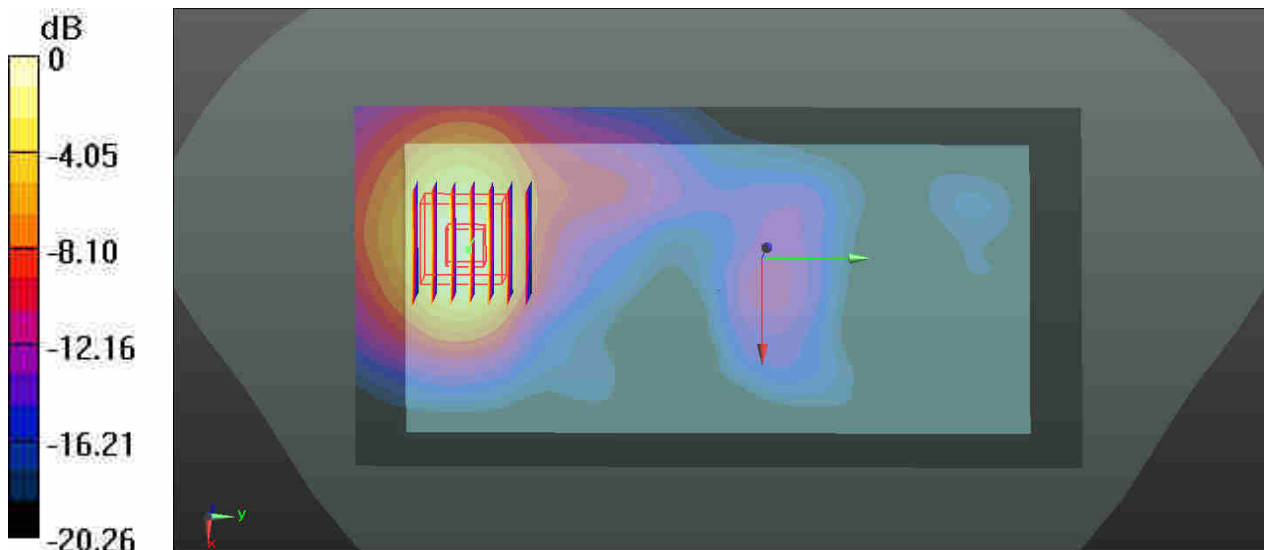
Communication System: UID 0, LTE (0); Frequency: 2510 MHz; Duty Cycle: 1:1
Medium: MSL_2600_181030 Medium parameters used: $f = 2510$ MHz; $\sigma = 2.078$ S/m; $\epsilon_r = 51.267$;
 $\rho = 1000$ kg/m³
Ambient Temperature : 23.5 °C; Liquid Temperature : 22.7 °C

DASY5 Configuration:

- Probe: EX3DV4 - SN3819; ConvF(6.92, 6.92, 6.92); Calibrated: 2018.01.31;
- Sensor-Surface: 1.4mm (Mechanical Surface Detection)
- Electronics: DAE4 Sn1437; Calibrated: 2018.10.15
- Phantom: SAM1; Type: QD000P40CD; Serial: TP:1670
- Measurement SW: DASY52, Version 52.8 (8); SEMCAD X Version 14.6.10 (7331)

Ch20850/Area Scan (81x161x1): Interpolated grid: dx=12mm, dy=12mm
Maximum value of SAR (interpolated) = 1.74 W/kg

Ch20850/Zoom Scan (7x7x7)/Cube 0: Measurement grid: dx=5mm, dy=5mm, dz=5mm
Reference Value = 0.4530 V/m; Power Drift = 0.05 dB
Peak SAR (extrapolated) = 2.20 W/kg
SAR(1 g) = 1.17 W/kg; SAR(10 g) = 0.589 W/kg
Maximum value of SAR (measured) = 1.68 W/kg



0 dB = 1.74 W/kg

39_LTE Band 41_20M_QPSK_1RB_49Offset_Back_10mm_Ch40185

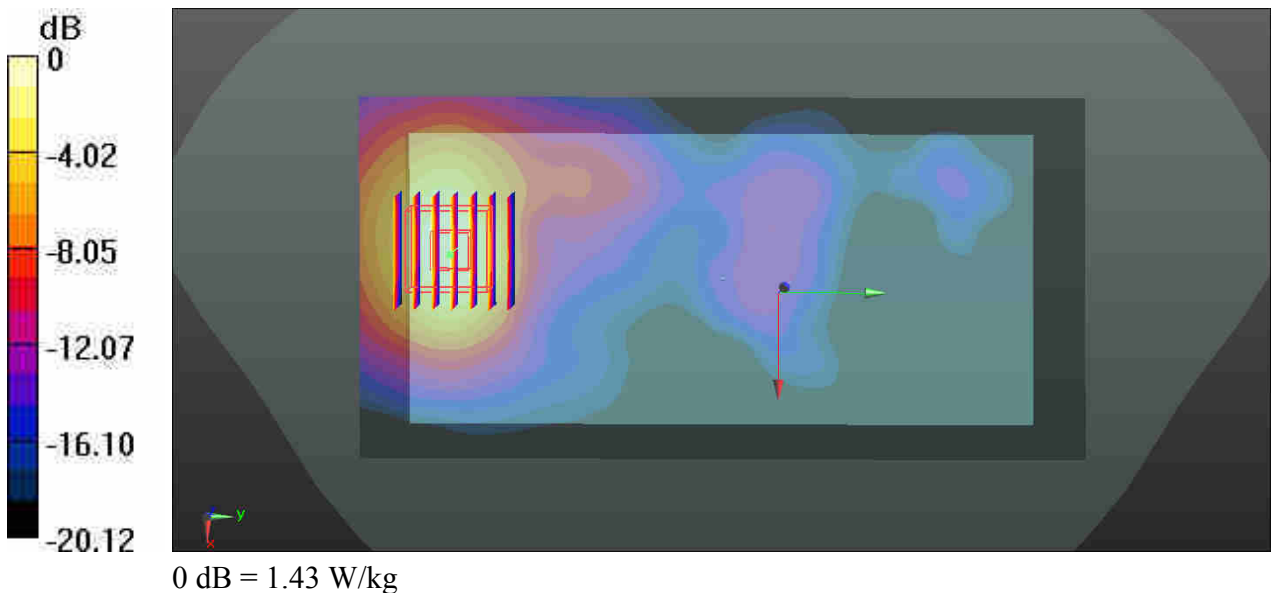
Communication System: UID 0, LTE (0); Frequency: 2549.5 MHz; Duty Cycle: 1:1.59
 Medium: MSL_2600_181030 Medium parameters used: $f = 2549.5$ MHz; $\sigma = 2.121$ S/m; $\epsilon_r = 51.178$;
 $\rho = 1000$ kg/m³
 Ambient Temperature : 23.5 °C; Liquid Temperature : 22.7 °C

DASY5 Configuration:

- Probe: EX3DV4 - SN3819; ConvF(6.92, 6.92, 6.92); Calibrated: 2018.01.31;
- Sensor-Surface: 1.4mm (Mechanical Surface Detection)
- Electronics: DAE4 Sn1437; Calibrated: 2018.10.15
- Phantom: SAM1; Type: QD000P40CD; Serial: TP:1670
- Measurement SW: DASY52, Version 52.8 (8); SEMCAD X Version 14.6.10 (7331)

Ch40185/Area Scan (81x161x1): Interpolated grid: dx=12mm, dy=12mm
 Maximum value of SAR (interpolated) = 1.47 W/kg

Ch40185/Zoom Scan (7x7x7)/Cube 0: Measurement grid: dx=5mm, dy=5mm, dz=5mm
 Reference Value = 0.4160 V/m; Power Drift = 0.03 dB
 Peak SAR (extrapolated) = 1.88 W/kg
SAR(1 g) = 0.990 W/kg; SAR(10 g) = 0.501 W/kg
 Maximum value of SAR (measured) = 1.43 W/kg



40_WLAN2.4GHz_802.11b 6Mbps_Back_10mm_Ch11

Communication System: UID 0, WIFI (0); Frequency: 2462 MHz; Duty Cycle: 1:1
Medium: MSL_2450_181029 Medium parameters used: $f = 2462$ MHz; $\sigma = 2.012$ S/m; $\epsilon_r = 52.233$;
 $\rho = 1000$ kg/m³
Ambient Temperature : 23.5 °C; Liquid Temperature : 22.8 °C

DASY5 Configuration:

- Probe: EX3DV4 - SN3819; ConvF(7.46, 7.46, 7.46); Calibrated: 2018.01.31;
- Sensor-Surface: 1.4mm (Mechanical Surface Detection)
- Electronics: DAE4 Sn1437; Calibrated: 2018.10.15
- Phantom: SAM1; Type: QD000P40CD; Serial: TP:1670
- Measurement SW: DASY52, Version 52.8 (8); SEMCAD X Version 14.6.10 (7331)

Ch11/Area Scan (81x161x1): Interpolated grid: dx=12mm, dy=12mm

Maximum value of SAR (interpolated) = 0.201 W/kg

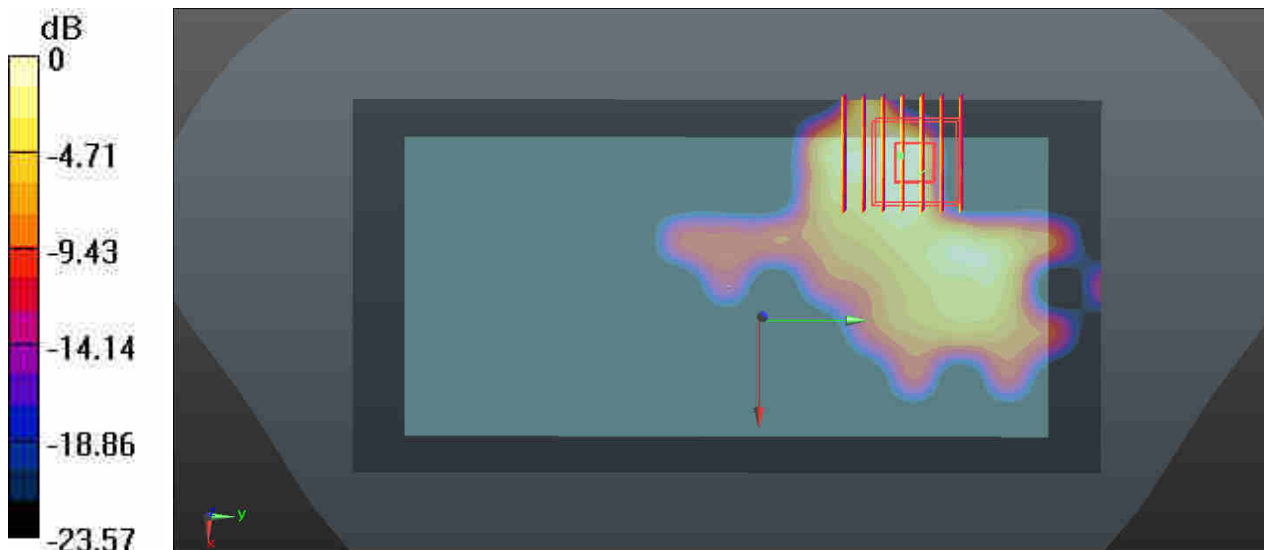
Ch11/Zoom Scan (7x7x7)/Cube 0: Measurement grid: dx=5mm, dy=5mm, dz=5mm

Reference Value = 0.7180 V/m; Power Drift = 0.04 dB

Peak SAR (extrapolated) = 0.128 W/kg

SAR(1 g) = 0.074 W/kg; SAR(10 g) = 0.035 W/kg

Maximum value of SAR (measured) = 0.0945 W/kg



0 dB = 0.0945 W/kg

41_WLAN5GHz_802.11a 6Mbps_Back_10mm_Ch36

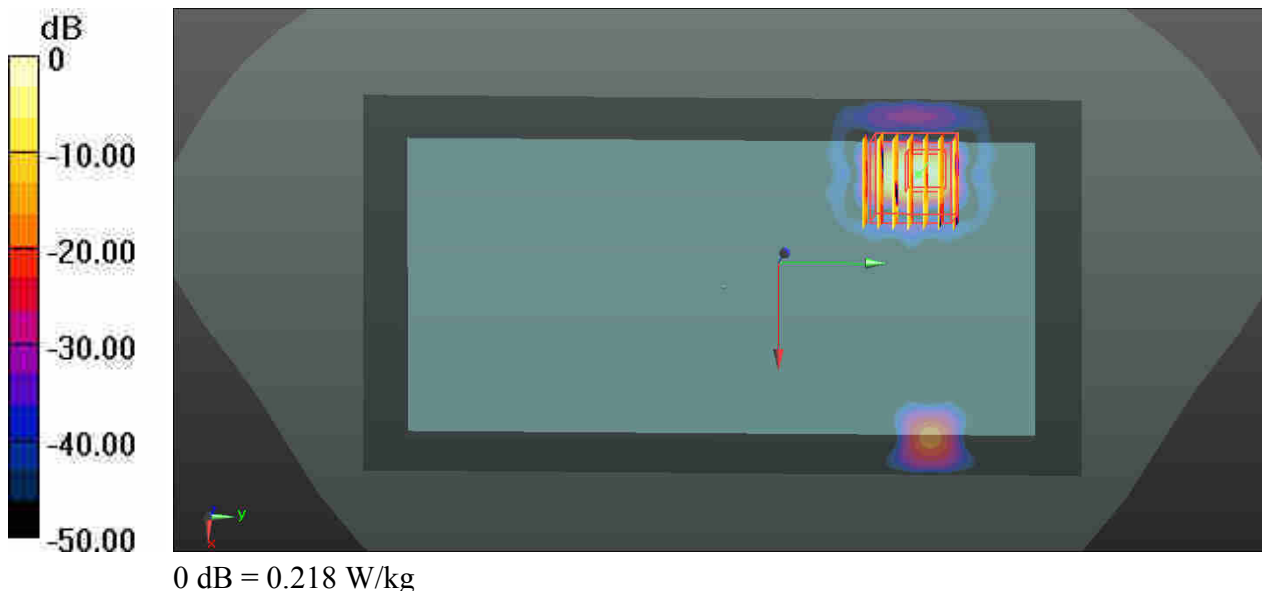
Communication System: UID 0, WIFI (0); Frequency: 5180 MHz;Duty Cycle: 1:1.063
Medium: MSL_5250_181031 Medium parameters used: $f = 5180 \text{ MHz}$; $\sigma = 5.36 \text{ S/m}$; $\epsilon_r = 47.861$; $\rho = 1000 \text{ kg/m}^3$
Ambient Temperature : $23.6 \text{ }^\circ\text{C}$; Liquid Temperature : $22.6 \text{ }^\circ\text{C}$

DASY5 Configuration:

- Probe: EX3DV4 - SN3819; ConvF(4.7, 4.7, 4.7); Calibrated: 2018.01.31;
- Sensor-Surface: 1.4mm (Mechanical Surface Detection)
- Electronics: DAE4 Sn1437; Calibrated: 2018.10.15
- Phantom: SAM1; Type: QD000P40CD; Serial: TP:1670
- Measurement SW: DASY52, Version 52.8 (8); SEMCAD X Version 14.6.10 (7331)

Ch36/Area Scan (101x191x1): Interpolated grid: $dx=10\text{mm}$, $dy=10\text{mm}$
Maximum value of SAR (interpolated) = 0.218 W/kg

Ch36/Zoom Scan (7x7x7)/Cube 0: Measurement grid: $dx=4\text{mm}$, $dy=4\text{mm}$, $dz=1.4\text{mm}$
Reference Value = 1.646 V/m ; Power Drift = -0.08 dB
Peak SAR (extrapolated) = 0.270 W/kg
SAR(1 g) = 0.079 W/kg ; SAR(10 g) = 0.031 W/kg
Maximum value of SAR (measured) = 0.171 W/kg



42_WLAN5GHz_802.11a 6Mbps_Right Side_10mm_Ch157

Communication System: UID 0, WIFI (0); Frequency: 5785 MHz; Duty Cycle: 1:1.063
Medium: MSL_5750_181031 Medium parameters used: $f = 5785$ MHz; $\sigma = 6.034$ S/m; $\epsilon_r = 48.297$;
 $\rho = 1000$ kg/m³
Ambient Temperature : 23.6 °C; Liquid Temperature : 22.8 °C

DASY5 Configuration:

- Probe: EX3DV4 - SN3819; ConvF(4.32, 4.32, 4.32); Calibrated: 2018.01.31;
- Sensor-Surface: 1.4mm (Mechanical Surface Detection)
- Electronics: DAE4 Sn1437; Calibrated: 2018.10.15
- Phantom: SAM1; Type: QD000P40CD; Serial: TP:1670
- Measurement SW: DASY52, Version 52.8 (8); SEMCAD X Version 14.6.10 (7331)

Ch157/Area Scan (51x191x1): Interpolated grid: dx=10mm, dy=10mm

Maximum value of SAR (interpolated) = 0.604 W/kg

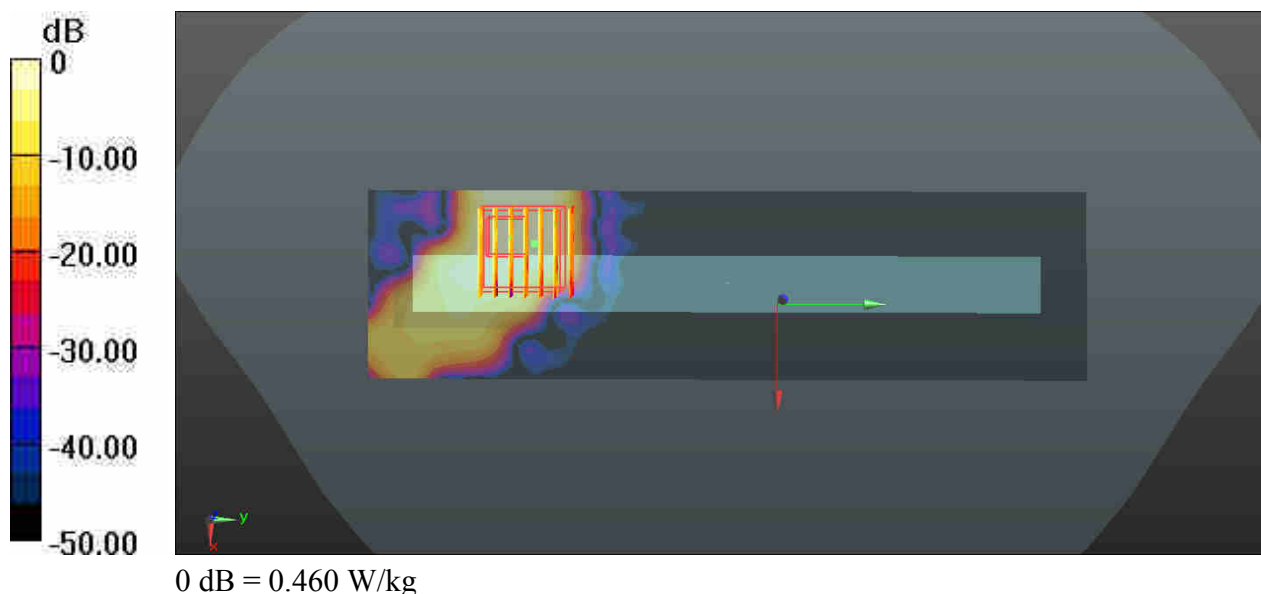
Ch157/Zoom Scan (7x7x7)/Cube 0: Measurement grid: dx=4mm, dy=4mm, dz=1.4mm

Reference Value = 2.194 V/m; Power Drift = 0.05 dB

Peak SAR (extrapolated) = 0.857 W/kg

SAR(1 g) = 0.203 W/kg; SAR(10 g) = 0.068 W/kg

Maximum value of SAR (measured) = 0.460 W/kg



43_Bluetooth_DH5 1Mbps_Back_10mm_Ch78

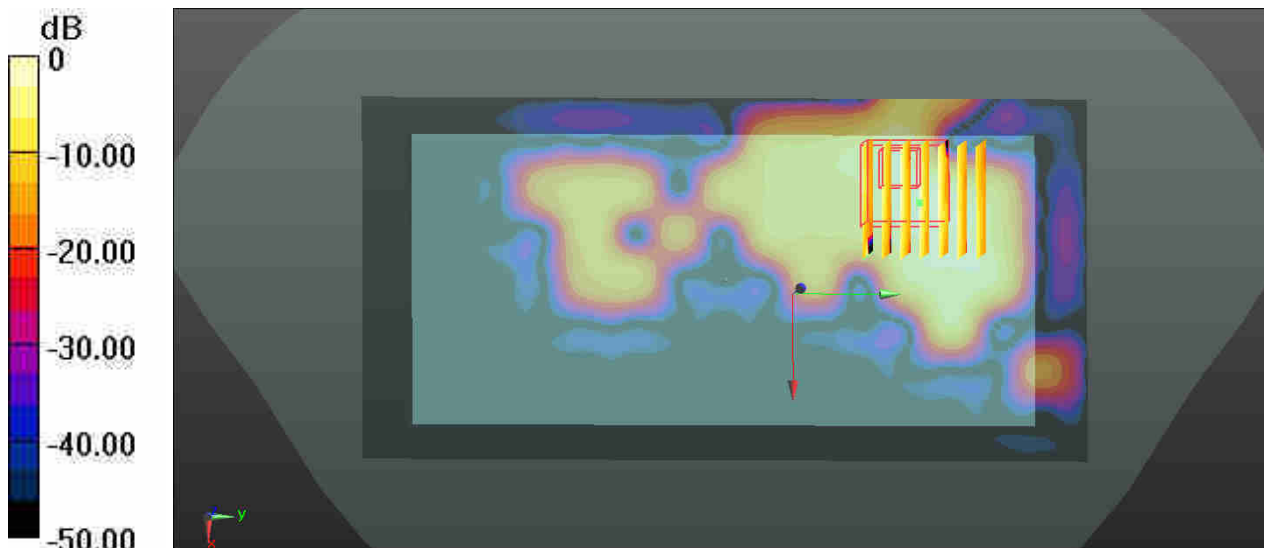
Communication System: UID 0, Bluetooth (0); Frequency: 2480 MHz; Duty Cycle: 1:1.298
Medium: MSL_2450_181029 Medium parameters used: $f = 2480$ MHz; $\sigma = 2.044$ S/m; $\epsilon_r = 52.15$; $\rho = 1000$ kg/m³
Ambient Temperature : 23.5 °C; Liquid Temperature : 22.8 °C

DASY5 Configuration:

- Probe: EX3DV4 - SN3819; ConvF(7.46, 7.46, 7.46); Calibrated: 2018.01.31;
- Sensor-Surface: 1.4mm (Mechanical Surface Detection)
- Electronics: DAE4 Sn1437; Calibrated: 2018.10.15
- Phantom: SAM1; Type: QD000P40CD; Serial: TP:1670
- Measurement SW: DASY52, Version 52.8 (8); SEMCAD X Version 14.6.10 (7331)

Ch78/Area Scan (81x161x1): Interpolated grid: dx=12mm, dy=12mm
Maximum value of SAR (interpolated) = 0.0702 W/kg

Ch78/Zoom Scan (7x7x7)/Cube 0: Measurement grid: dx=5mm, dy=5mm, dz=5mm
Reference Value = 0 V/m; Power Drift = 0.05 dB
Peak SAR (extrapolated) = 0.175 W/kg
SAR(1 g) = 0.029 W/kg; SAR(10 g) = 0.011 W/kg
Maximum value of SAR (measured) = 0.0779 W/kg



0 dB = 0.0702 W/kg

44_GSM850_GPRS(4 Tx slots)_Back_15mm_Ch251

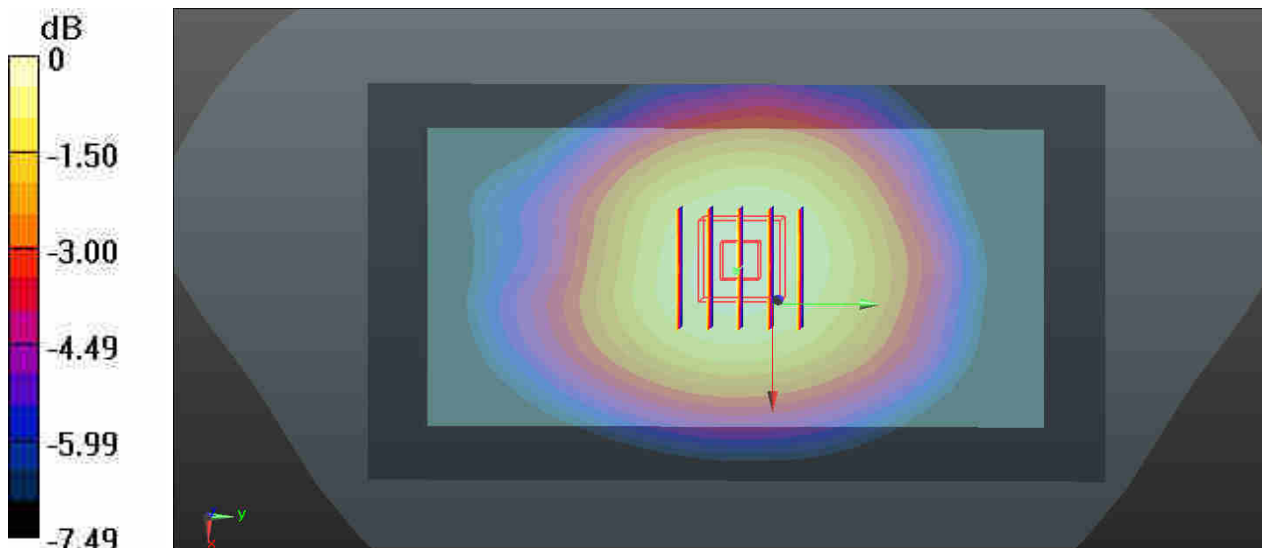
Communication System: UID 0, GPRS/EDGE12 (0); Frequency: 848.8 MHz; Duty Cycle: 1:2.08
Medium: MSL_835_181015 Medium parameters used: $f = 849$ MHz; $\sigma = 0.999$ S/m; $\epsilon_r = 56.134$; $\rho = 1000$ kg/m³
Ambient Temperature : 23.5 °C; Liquid Temperature : 22.4 °C

DASY5 Configuration:

- Probe: EX3DV4 - SN3819; ConvF(9.49, 9.49, 9.49); Calibrated: 2018.01.31;
- Sensor-Surface: 1.4mm (Mechanical Surface Detection)
- Electronics: DAE4 Sn1437; Calibrated: 2018.10.15
- Phantom: SAM1; Type: QD000P40CD; Serial: TP:1670
- Measurement SW: DASY52, Version 52.8 (8); SEMCAD X Version 14.6.10 (7331)

Ch251/Area Scan (71x131x1): Interpolated grid: dx=15mm, dy=15mm
Maximum value of SAR (interpolated) = 0.432 W/kg

Ch251/Zoom Scan (5x5x7)/Cube 0: Measurement grid: dx=8mm, dy=8mm, dz=5mm
Reference Value = 3.321 V/m; Power Drift = 0.08 dB
Peak SAR (extrapolated) = 0.499 W/kg
SAR(1 g) = 0.398 W/kg; SAR(10 g) = 0.305 W/kg
Maximum value of SAR (measured) = 0.457 W/kg



0 dB = 0.457 W/kg

45_GSM1900_GPRS(2 Tx slots)_Back_15mm_Ch810

Communication System: UID 0, GPRS/EDGE10 (0); Frequency: 1909.8 MHz; Duty Cycle: 1:4.15
Medium: MSL_1900_181025 Medium parameters used: $f = 1910$ MHz; $\sigma = 1.596$ S/m; $\epsilon_r = 54.18$; $\rho = 1000$ kg/m³

Ambient Temperature : 23.5 °C; Liquid Temperature : 22.5 °C

DASY5 Configuration:

- Probe: EX3DV4 - SN3819; ConvF(7.69, 7.69, 7.69); Calibrated: 2018.01.31;
- Sensor-Surface: 1.4mm (Mechanical Surface Detection)
- Electronics: DAE4 Sn1437; Calibrated: 2018.10.15
- Phantom: SAM1; Type: QD000P40CD; Serial: TP:1670
- Measurement SW: DASY52, Version 52.8 (8); SEMCAD X Version 14.6.10 (7331)

Ch810/Area Scan (71x131x1): Interpolated grid: dx=15mm, dy=15mm

Maximum value of SAR (interpolated) = 0.656 W/kg

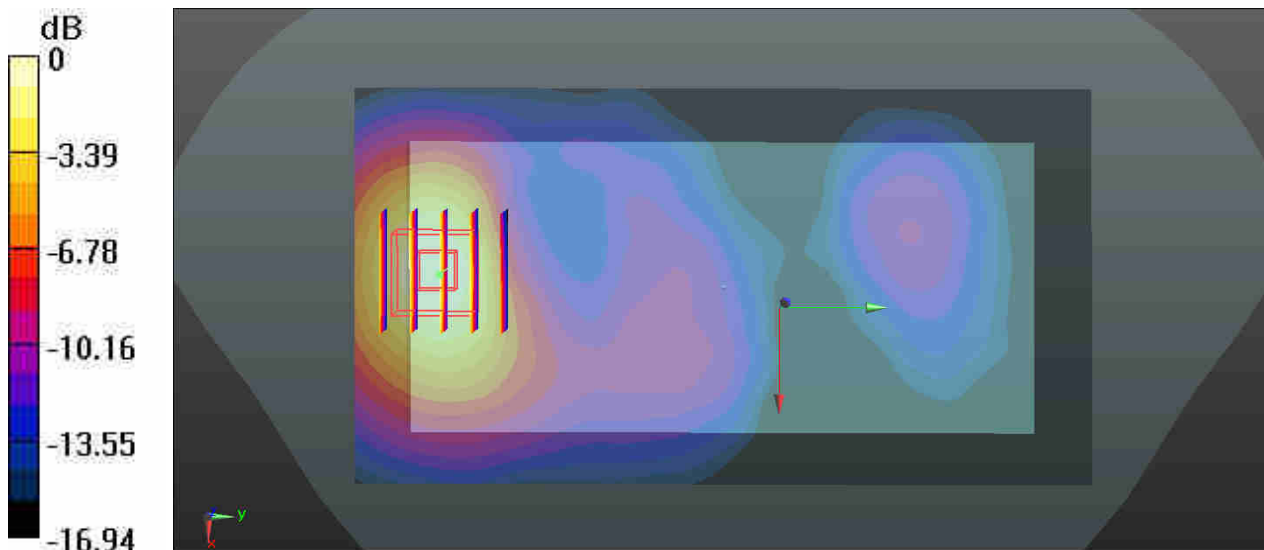
Ch810/Zoom Scan (5x5x7)/Cube 0: Measurement grid: dx=8mm, dy=8mm, dz=5mm

Reference Value = 2.610 V/m; Power Drift = 0.07 dB

Peak SAR (extrapolated) = 0.776 W/kg

SAR(1 g) = 0.471 W/kg; SAR(10 g) = 0.270 W/kg

Maximum value of SAR (measured) = 0.630 W/kg



0 dB = 0.630 W/kg

46_WCDMA V_RMC 12.2Kbps_Back_15mm_Ch4182

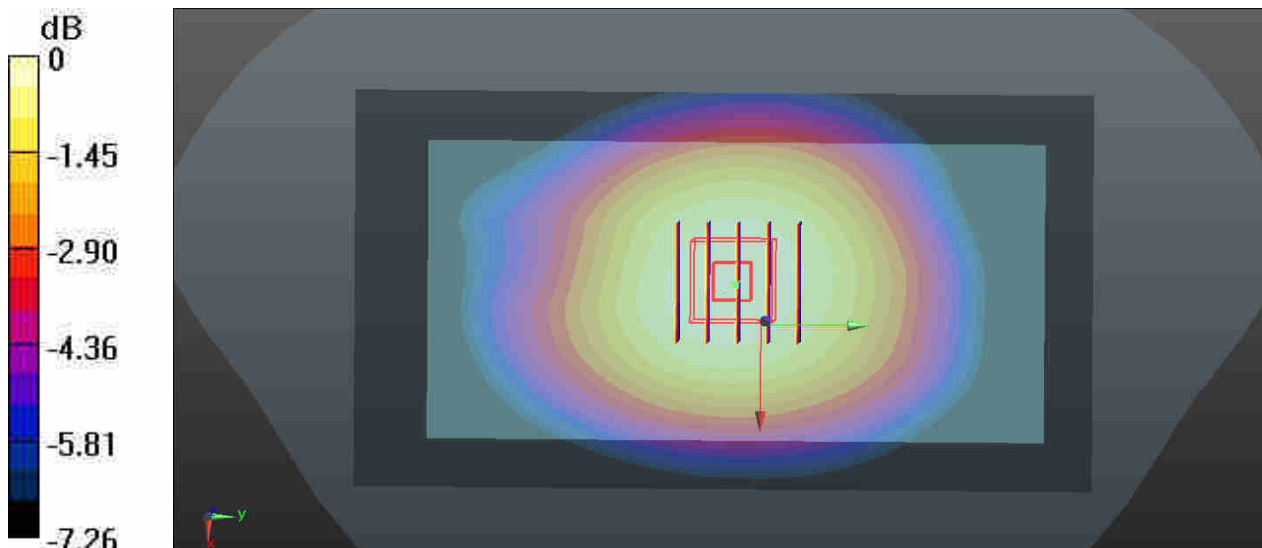
Communication System: UID 0, UMTS (0); Frequency: 836.4 MHz; Duty Cycle: 1:1
Medium: MSL_835_181015 Medium parameters used: $f = 836.4$ MHz; $\sigma = 0.982$ S/m; $\epsilon_r = 56.222$;
 $\rho = 1000$ kg/m³
Ambient Temperature : 23.5 °C; Liquid Temperature : 22.4 °C

DASY5 Configuration:

- Probe: EX3DV4 - SN3819; ConvF(9.49, 9.49, 9.49); Calibrated: 2018.01.31;
- Sensor-Surface: 1.4mm (Mechanical Surface Detection)
- Electronics: DAE4 Sn1437; Calibrated: 2018.10.15
- Phantom: SAM1; Type: QD000P40CD; Serial: TP:1670
- Measurement SW: DASY52, Version 52.8 (8); SEMCAD X Version 14.6.10 (7331)

Ch4182/Area Scan (71x131x1): Interpolated grid: dx=15mm, dy=15mm
Maximum value of SAR (interpolated) = 0.572 W/kg

Ch4182/Zoom Scan (5x5x7)/Cube 0: Measurement grid: dx=8mm, dy=8mm, dz=5mm
Reference Value = 3.380 V/m; Power Drift = 0.01 dB
Peak SAR (extrapolated) = 0.624 W/kg
SAR(1 g) = 0.498 W/kg; SAR(10 g) = 0.383 W/kg
Maximum value of SAR (measured) = 0.571 W/kg



0 dB = 0.571 W/kg

47_WCDMA IV_RMC 12.2Kbps_Back_15mm_Ch1312

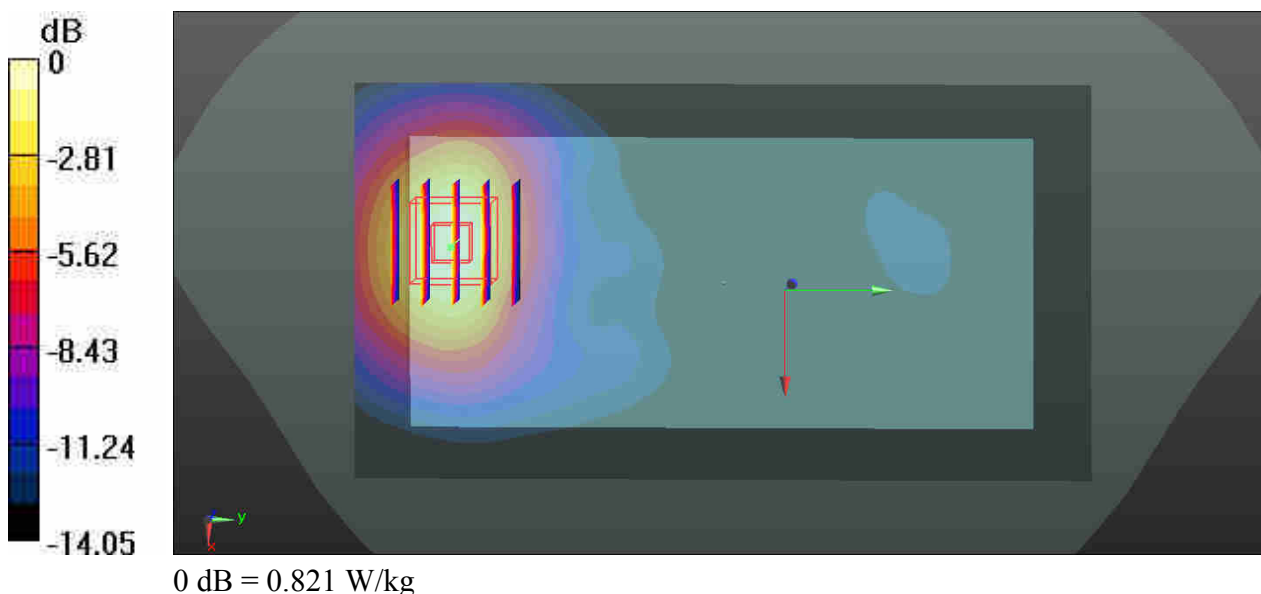
Communication System: UID 0, UMTS (0); Frequency: 1712.4 MHz; Duty Cycle: 1:1
Medium: MSL_1750_181026 Medium parameters used: $f = 1712.4$ MHz; $\sigma = 1.47$ S/m; $\epsilon_r = 52.06$;
 $\rho = 1000$ kg/m³
Ambient Temperature : 23.5 °C; Liquid Temperature : 22.6 °C

DASY5 Configuration:

- Probe: EX3DV4 - SN3819; ConvF(7.93, 7.93, 7.93); Calibrated: 2018.01.31;
- Sensor-Surface: 1.4mm (Mechanical Surface Detection)
- Electronics: DAE4 Sn1437; Calibrated: 2018.10.15
- Phantom: SAM1; Type: QD000P40CD; Serial: TP:1670
- Measurement SW: DASY52, Version 52.8 (8); SEMCAD X Version 14.6.10 (7331)

Ch1312/Area Scan (71x131x1): Interpolated grid: dx=15mm, dy=15mm
Maximum value of SAR (interpolated) = 0.846 W/kg

Ch1312/Zoom Scan (5x5x7)/Cube 0: Measurement grid: dx=8mm, dy=8mm, dz=5mm
Reference Value = 4.734 V/m; Power Drift = 0.06 dB
Peak SAR (extrapolated) = 0.981 W/kg
SAR(1 g) = 0.631 W/kg; SAR(10 g) = 0.376 W/kg
Maximum value of SAR (measured) = 0.821 W/kg



48_WCDMA II_RMC 12.2Kbps_Back_15mm_Ch9262

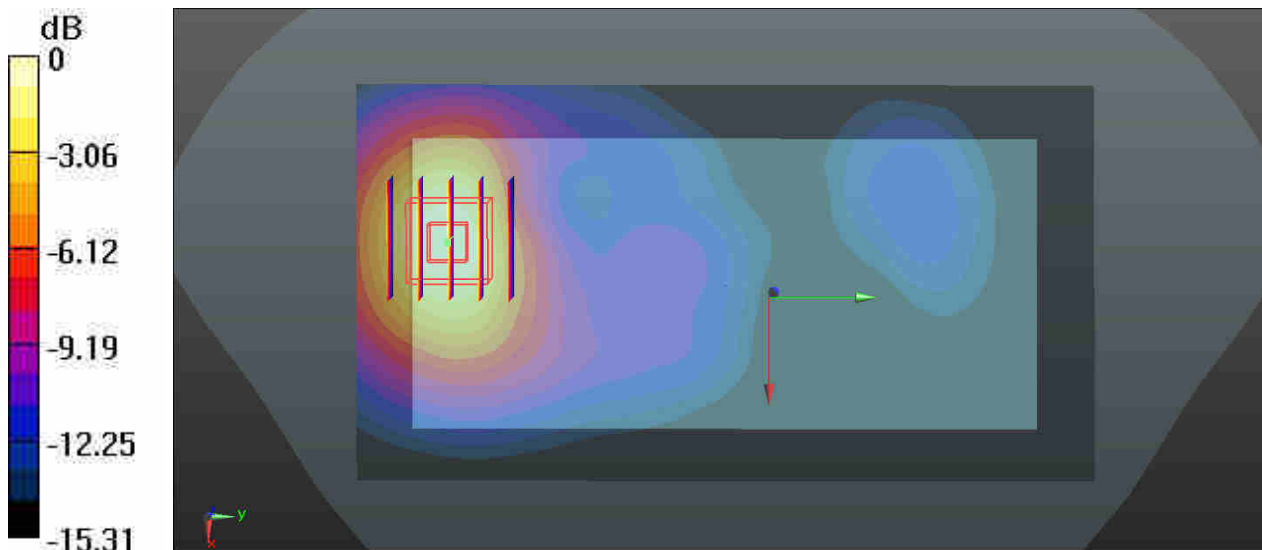
Communication System: UID 0, UMTS (0); Frequency: 1852.4 MHz; Duty Cycle: 1:1
Medium: MSL_1900_181025 Medium parameters used: $f = 1852.4$ MHz; $\sigma = 1.53$ S/m; $\epsilon_r = 54.385$;
 $\rho = 1000$ kg/m³
Ambient Temperature : 23.5 °C; Liquid Temperature : 22.5 °C

DASY5 Configuration:

- Probe: EX3DV4 - SN3819; ConvF(7.69, 7.69, 7.69); Calibrated: 2018.01.31;
- Sensor-Surface: 1.4mm (Mechanical Surface Detection)
- Electronics: DAE4 Sn1437; Calibrated: 2018.10.15
- Phantom: SAM1; Type: QD000P40CD; Serial: TP:1670
- Measurement SW: DASY52, Version 52.8 (8); SEMCAD X Version 14.6.10 (7331)

Ch9262/Area Scan (71x131x1): Interpolated grid: dx=15mm, dy=15mm
Maximum value of SAR (interpolated) = 0.874 W/kg

Ch9262/Zoom Scan (5x5x7)/Cube 0: Measurement grid: dx=8mm, dy=8mm, dz=5mm
Reference Value = 4.498 V/m; Power Drift = 0.04 dB
Peak SAR (extrapolated) = 1.04 W/kg
SAR(1 g) = 0.651 W/kg; SAR(10 g) = 0.379 W/kg
Maximum value of SAR (measured) = 0.860 W/kg



0 dB = 0.860 W/kg

49_CDMA2000 BC0_RC3 SO32 (F+SCH)_Back_15mm_Ch384

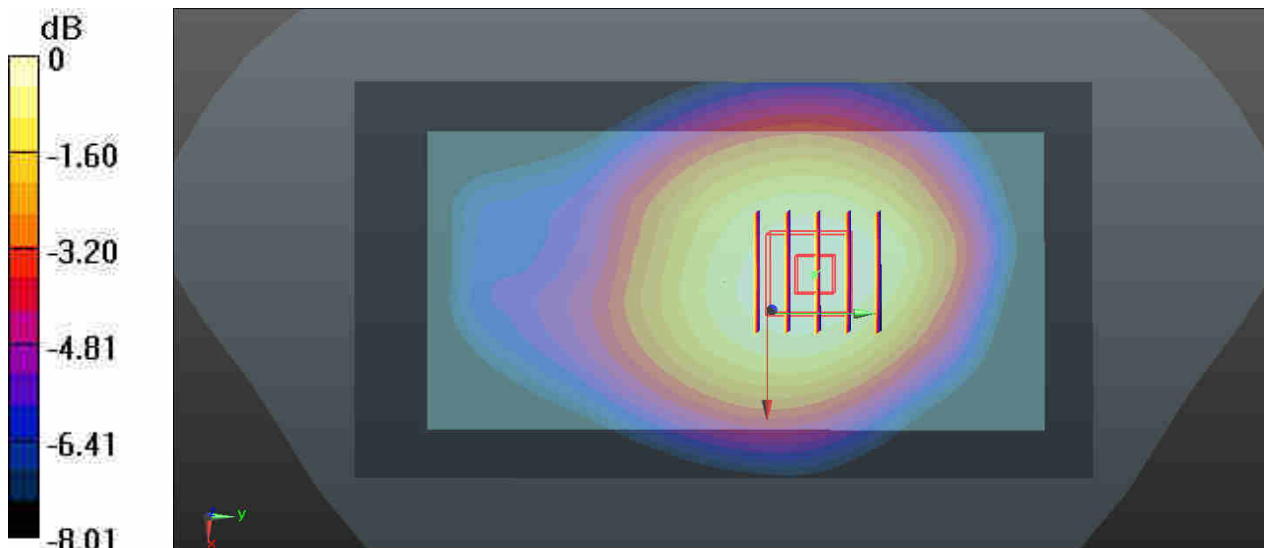
Communication System: UID 0, CDMA2000 (0); Frequency: 836.52 MHz; Duty Cycle: 1:1
Medium: MSL_835_181015 Medium parameters used: $f = 837$ MHz; $\sigma = 0.983$ S/m; $\epsilon_r = 56.219$; $\rho = 1000$ kg/m³
Ambient Temperature : 23.5 °C; Liquid Temperature : 22.4 °C

DASY5 Configuration:

- Probe: EX3DV4 - SN3819; ConvF(9.49, 9.49, 9.49); Calibrated: 2018.01.31;
- Sensor-Surface: 1.4mm (Mechanical Surface Detection)
- Electronics: DAE4 Sn1437; Calibrated: 2018.10.15
- Phantom: SAM1; Type: QD000P40CD; Serial: TP:1670
- Measurement SW: DASY52, Version 52.8 (8); SEMCAD X Version 14.6.10 (7331)

Ch384/Area Scan (71x131x1): Interpolated grid: dx=15mm, dy=15mm
Maximum value of SAR (interpolated) = 0.487 W/kg

Ch384/Zoom Scan (5x5x7)/Cube 0: Measurement grid: dx=8mm, dy=8mm, dz=5mm
Reference Value = 2.784 V/m; Power Drift = 0.04 dB
Peak SAR (extrapolated) = 0.531 W/kg
SAR(1 g) = 0.423 W/kg; SAR(10 g) = 0.325 W/kg
Maximum value of SAR (measured) = 0.486 W/kg



0 dB = 0.486 W/kg

50_CDMA2000 BC10_RC3 SO32 (F+SCH)_Back_15mm_Ch580

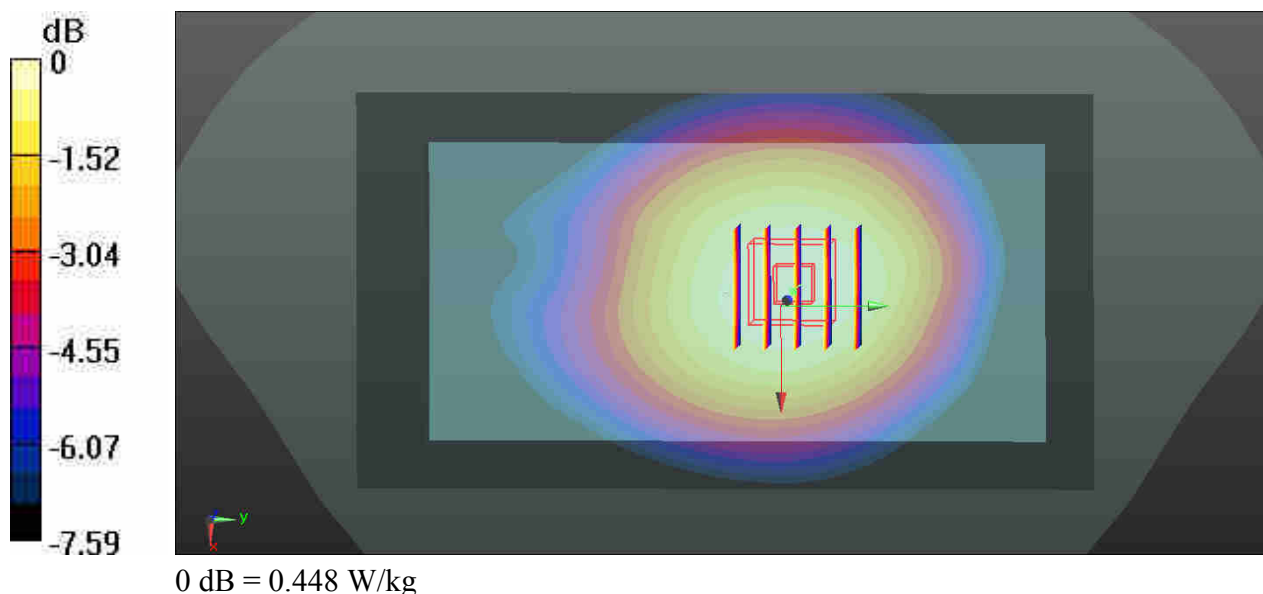
Communication System: UID 0, CDMA2000 (0); Frequency: 820.5 MHz; Duty Cycle: 1:1
 Medium: MSL_835_181015 Medium parameters used: $f = 820.5$ MHz; $\sigma = 0.963$ S/m; $\epsilon_r = 56.34$; $\rho = 1000$ kg/m³
 Ambient Temperature : 23.5 °C; Liquid Temperature : 22.4 °C

DASY5 Configuration:

- Probe: EX3DV4 - SN3819; ConvF(9.49, 9.49, 9.49); Calibrated: 2018.01.31;
- Sensor-Surface: 1.4mm (Mechanical Surface Detection)
- Electronics: DAE4 Sn1437; Calibrated: 2018.10.15
- Phantom: SAM1; Type: QD000P40CD; Serial: TP:1670
- Measurement SW: DASY52, Version 52.8 (8); SEMCAD X Version 14.6.10 (7331)

Ch580/Area Scan (71x131x1): Interpolated grid: dx=15mm, dy=15mm
 Maximum value of SAR (interpolated) = 0.451 W/kg

Ch580/Zoom Scan (5x5x7)/Cube 0: Measurement grid: dx=8mm, dy=8mm, dz=5mm
 Reference Value = 2.463 V/m; Power Drift = 0.01 dB
 Peak SAR (extrapolated) = 0.489 W/kg
SAR(1 g) = 0.391 W/kg; SAR(10 g) = 0.302 W/kg
 Maximum value of SAR (measured) = 0.448 W/kg



51_CDMA2000 BC1_RC3 SO32 (F+SCH)_Back_15mm_Ch25

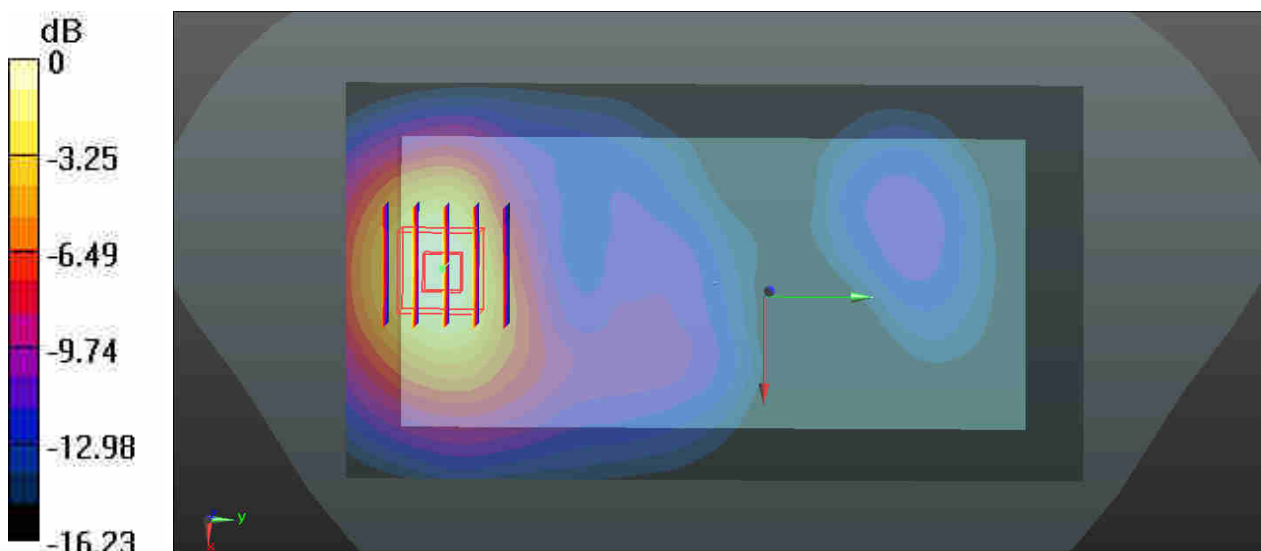
Communication System: UID 0, CDMA2000 (0); Frequency: 1851.25 MHz; Duty Cycle: 1:1
Medium: MSL_1900_181025 Medium parameters used: $f = 1851.25$ MHz; $\sigma = 1.529$ S/m; $\epsilon_r = 54.389$; $\rho = 1000$ kg/m³
Ambient Temperature : 23.5 °C; Liquid Temperature : 22.5 °C

DASY5 Configuration:

- Probe: EX3DV4 - SN3819; ConvF(7.69, 7.69, 7.69); Calibrated: 2018.01.31;
- Sensor-Surface: 1.4mm (Mechanical Surface Detection)
- Electronics: DAE4 Sn1437; Calibrated: 2018.10.15
- Phantom: SAM1; Type: QD000P40CD; Serial: TP:1670
- Measurement SW: DASY52, Version 52.8 (8); SEMCAD X Version 14.6.10 (7331)

Ch25/Area Scan (71x131x1): Interpolated grid: dx=15mm, dy=15mm
Maximum value of SAR (interpolated) = 1.16 W/kg

Ch25/Zoom Scan (5x5x7)/Cube 0: Measurement grid: dx=8mm, dy=8mm, dz=5mm
Reference Value = 3.130 V/m; Power Drift = 0.03 dB
Peak SAR (extrapolated) = 1.36 W/kg
SAR(1 g) = 0.838 W/kg; SAR(10 g) = 0.480 W/kg
Maximum value of SAR (measured) = 1.12 W/kg



0 dB = 1.12 W/kg

52_LTE Band 12_10M_QPSK_1RB_25Offset_Back_15mm_Ch23095

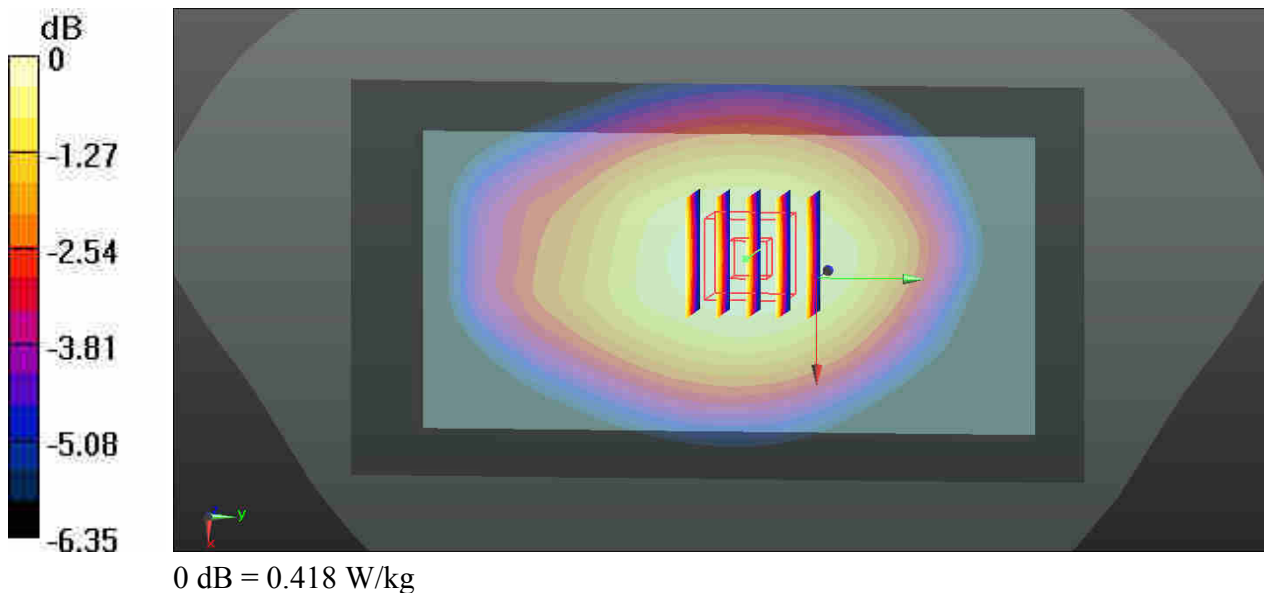
Communication System: UID 0, LTE (0); Frequency: 707.5 MHz; Duty Cycle: 1:1
Medium: MSL_750_181101 Medium parameters used: $f = 707.5$ MHz; $\sigma = 0.939$ S/m; $\epsilon_r = 55.571$;
 $\rho = 1000$ kg/m³
Ambient Temperature : 23.4 °C; Liquid Temperature : 22.5 °C

DASY5 Configuration:

- Probe: EX3DV4 - SN3819; ConvF(9.7, 9.7, 9.7); Calibrated: 2018.01.31;
- Sensor-Surface: 1.4mm (Mechanical Surface Detection)
- Electronics: DAE4 Sn1437; Calibrated: 2018.10.15
- Phantom: SAM1; Type: QD000P40CD; Serial: TP:1670
- Measurement SW: DASY52, Version 52.8 (8); SEMCAD X Version 14.6.10 (7331)

Ch23095/Area Scan (71x131x1): Interpolated grid: dx=15mm, dy=15mm
Maximum value of SAR (interpolated) = 0.418 W/kg

Ch23095/Zoom Scan (5x5x7)/Cube 0: Measurement grid: dx=8mm, dy=8mm, dz=5mm
Reference Value = 3.166 V/m; Power Drift = 0.05 dB
Peak SAR (extrapolated) = 0.454 W/kg
SAR(1 g) = 0.372 W/kg; SAR(10 g) = 0.295 W/kg
Maximum value of SAR (measured) = 0.421 W/kg



53_LTE Band 13_10M_QPSK_1RB_25Offset_Back_15mm_Ch23230

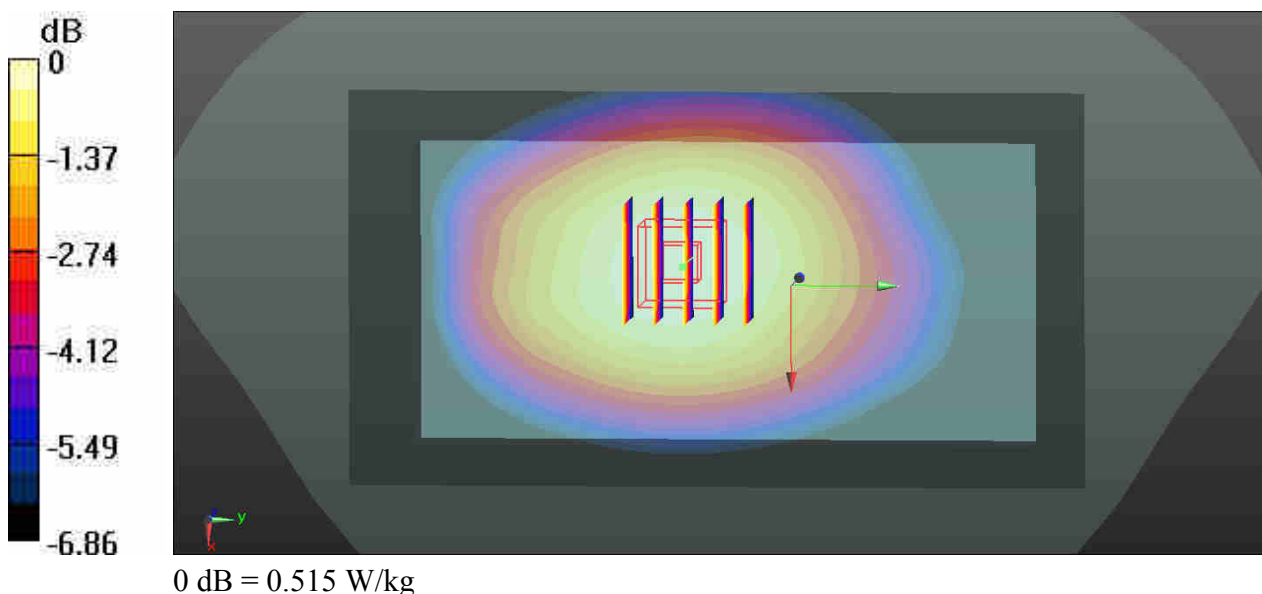
Communication System: UID 0, LTE (0); Frequency: 782 MHz; Duty Cycle: 1:1
Medium: MSL_750_181101 Medium parameters used: $f = 782$ MHz; $\sigma = 0.996$ S/m; $\epsilon_r = 53.986$; $\rho = 1000$ kg/m³
Ambient Temperature : 23.4 °C; Liquid Temperature : 22.5 °C

DASY5 Configuration:

- Probe: EX3DV4 - SN3819; ConvF(9.7, 9.7, 9.7); Calibrated: 2018.01.31;
- Sensor-Surface: 1.4mm (Mechanical Surface Detection)
- Electronics: DAE4 Sn1437; Calibrated: 2018.10.15
- Phantom: SAM1; Type: QD000P40CD; Serial: TP:1670
- Measurement SW: DASY52, Version 52.8 (8); SEMCAD X Version 14.6.10 (7331)

Ch23230/Area Scan (71x131x1): Interpolated grid: dx=15mm, dy=15mm
Maximum value of SAR (interpolated) = 0.515 W/kg

Ch23230/Zoom Scan (5x5x7)/Cube 0: Measurement grid: dx=8mm, dy=8mm, dz=5mm
Reference Value = 3.074 V/m; Power Drift = 0.06 dB
Peak SAR (extrapolated) = 0.561 W/kg
SAR(1 g) = 0.454 W/kg; SAR(10 g) = 0.354 W/kg
Maximum value of SAR (measured) = 0.516 W/kg



54_LTE Band 5_10M_QPSK_1RB_0Offset_Back_15mm_Ch20525

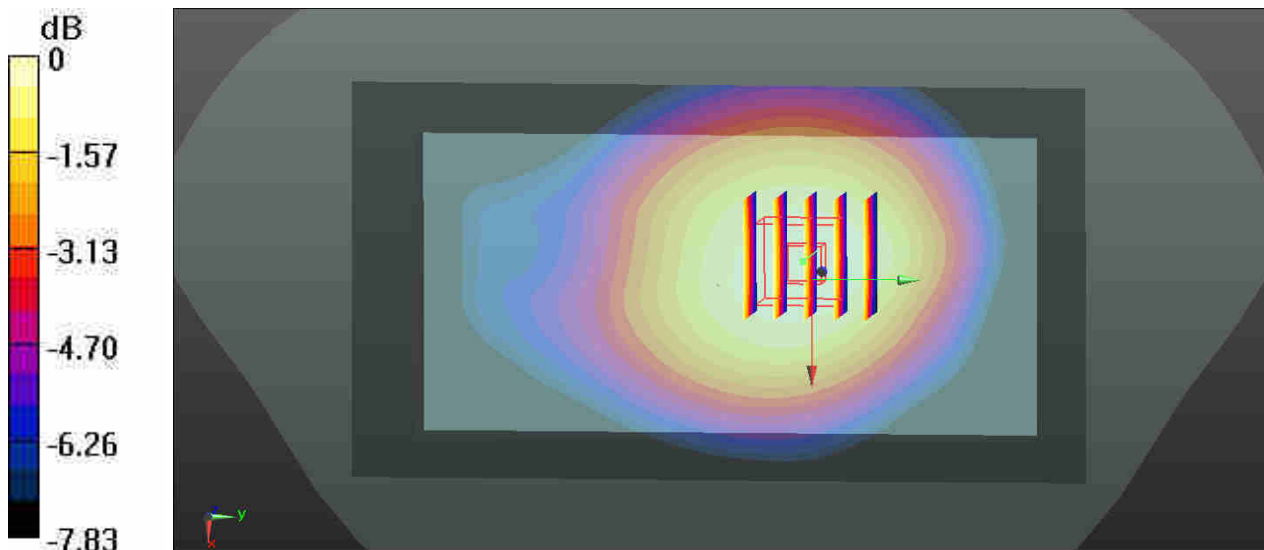
Communication System: UID 0, LTE (0); Frequency: 836.5 MHz; Duty Cycle: 1:1
Medium: MSL_835_181015 Medium parameters used: $f = 836.5$ MHz; $\sigma = 0.983$ S/m; $\epsilon_r = 56.221$;
 $\rho = 1000$ kg/m³
Ambient Temperature : 23.5 °C; Liquid Temperature : 22.4 °C

DASY5 Configuration:

- Probe: EX3DV4 - SN3819; ConvF(9.49, 9.49, 9.49); Calibrated: 2018.01.31;
- Sensor-Surface: 1.4mm (Mechanical Surface Detection)
- Electronics: DAE4 Sn1437; Calibrated: 2018.10.15
- Phantom: SAM1; Type: QD000P40CD; Serial: TP:1670
- Measurement SW: DASY52, Version 52.8 (8); SEMCAD X Version 14.6.10 (7331)

Ch20525/Area Scan (71x131x1): Interpolated grid: dx=15mm, dy=15mm
Maximum value of SAR (interpolated) = 0.425 W/kg

Ch20525/Zoom Scan (5x5x7)/Cube 0: Measurement grid: dx=8mm, dy=8mm, dz=5mm
Reference Value = 2.552 V/m; Power Drift = 0.09 dB
Peak SAR (extrapolated) = 0.465 W/kg
SAR(1 g) = 0.371 W/kg; SAR(10 g) = 0.284 W/kg
Maximum value of SAR (measured) = 0.426 W/kg



0 dB = 0.425 W/kg

55_LTE Band 26_15M_QPSK_1RB_0Offset_Back_15mm_Ch26965

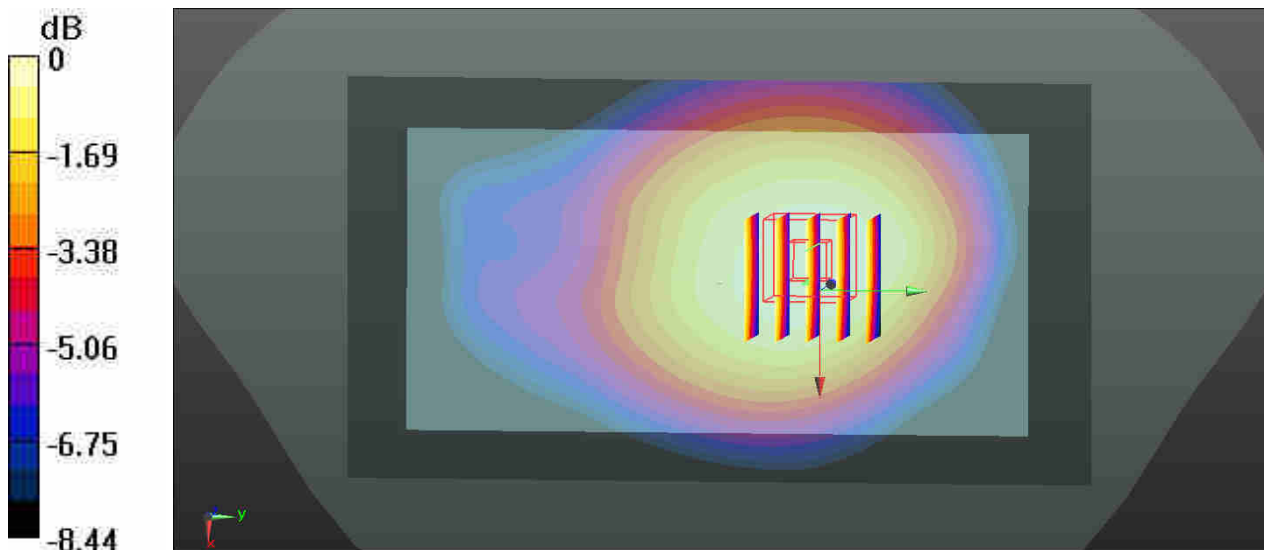
Communication System: UID 0, LTE (0); Frequency: 841.5 MHz; Duty Cycle: 1:1
Medium: MSL_835_181015 Medium parameters used: $f = 841.5$ MHz; $\sigma = 0.989$ S/m; $\epsilon_r = 56.186$;
 $\rho = 1000$ kg/m³
Ambient Temperature : 23.5 °C; Liquid Temperature : 22.4 °C

DASY5 Configuration:

- Probe: EX3DV4 - SN3819; ConvF(9.49, 9.49, 9.49); Calibrated: 2018.01.31;
- Sensor-Surface: 1.4mm (Mechanical Surface Detection)
- Electronics: DAE4 Sn1437; Calibrated: 2018.10.15
- Phantom: SAM1; Type: QD000P40CD; Serial: TP:1670
- Measurement SW: DASY52, Version 52.8 (8); SEMCAD X Version 14.6.10 (7331)

Ch26965/Area Scan (71x131x1): Interpolated grid: dx=15mm, dy=15mm
Maximum value of SAR (interpolated) = 0.435 W/kg

Ch26965/Zoom Scan (5x5x7)/Cube 0: Measurement grid: dx=8mm, dy=8mm, dz=5mm
Reference Value = 2.529 V/m; Power Drift = 0.18 dB
Peak SAR (extrapolated) = 0.492 W/kg
SAR(1 g) = 0.390 W/kg; SAR(10 g) = 0.298 W/kg
Maximum value of SAR (measured) = 0.446 W/kg



0 dB = 0.435 W/kg

56_LTE Band 4_20M_QPSK_1RB_0Offset_Back_15mm_Ch20175

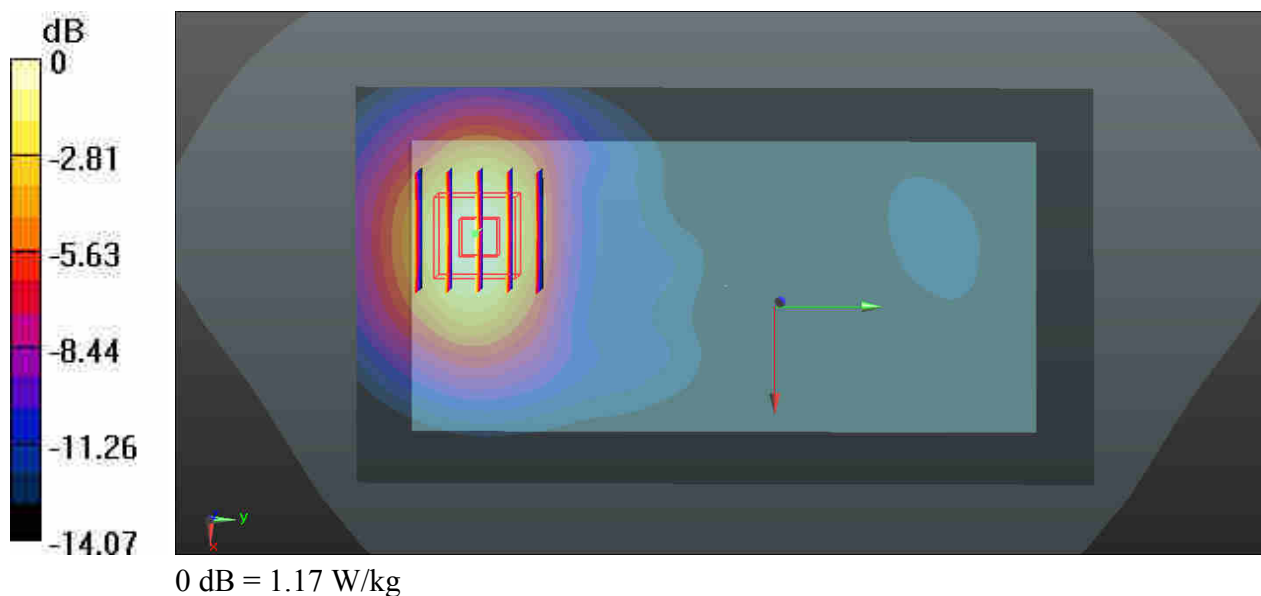
Communication System: UID 0, LTE (0); Frequency: 1732.5 MHz; Duty Cycle: 1:1
Medium: MSL_1750_181026 Medium parameters used: $f = 1732.5$ MHz; $\sigma = 1.492$ S/m; $\epsilon_r = 52.022$; $\rho = 1000$ kg/m³
Ambient Temperature : 23.5 °C; Liquid Temperature : 22.6 °C

DASY5 Configuration:

- Probe: EX3DV4 - SN3819; ConvF(7.93, 7.93, 7.93); Calibrated: 2018.01.31;
- Sensor-Surface: 1.4mm (Mechanical Surface Detection)
- Electronics: DAE4 Sn1437; Calibrated: 2018.10.15
- Phantom: SAM1; Type: QD000P40CD; Serial: TP:1670
- Measurement SW: DASY52, Version 52.8 (8); SEMCAD X Version 14.6.10 (7331)

Ch20175/Area Scan (71x131x1): Interpolated grid: dx=15mm, dy=15mm
Maximum value of SAR (interpolated) = 1.20 W/kg

Ch20175/Zoom Scan (5x5x7)/Cube 0: Measurement grid: dx=8mm, dy=8mm, dz=5mm
Reference Value = 5.446 V/m; Power Drift = 0.02 dB
Peak SAR (extrapolated) = 1.40 W/kg
SAR(1 g) = 0.903 W/kg; SAR(10 g) = 0.537 W/kg
Maximum value of SAR (measured) = 1.17 W/kg



57_LTE Band 25_20M_QPSK_1RB_0Offset_Back_15mm_Ch26340

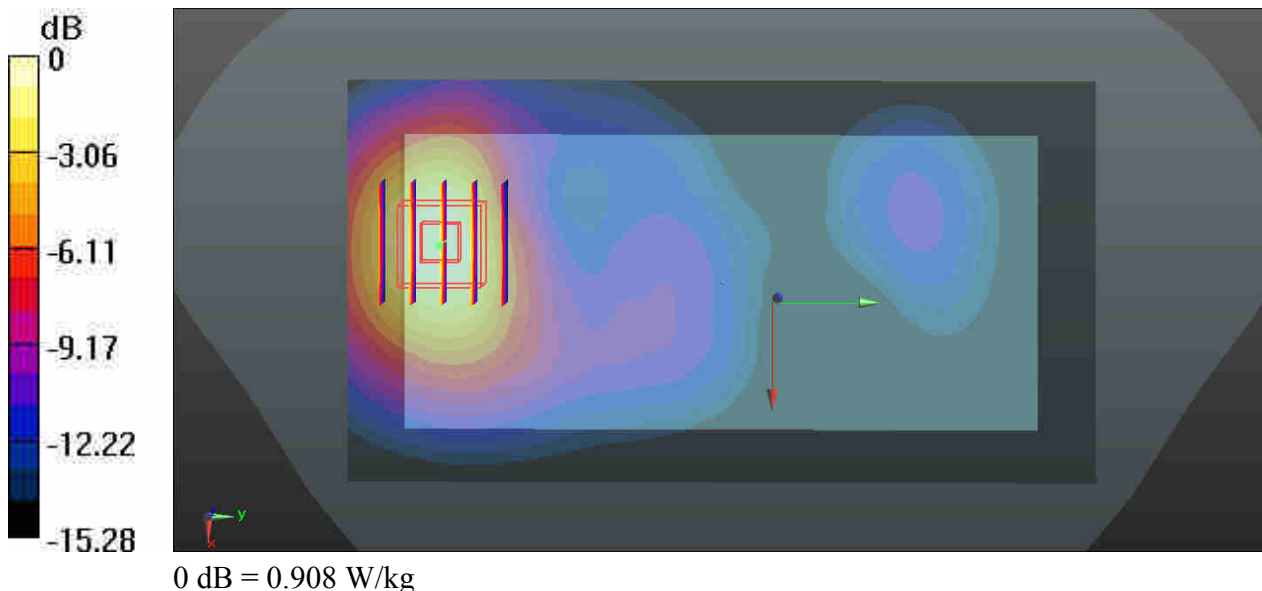
Communication System: UID 0, LTE (0); Frequency: 1880 MHz; Duty Cycle: 1:1
Medium: MSL_1900_181025 Medium parameters used: $f = 1880$ MHz; $\sigma = 1.562$ S/m; $\epsilon_r = 54.285$;
 $\rho = 1000$ kg/m³
Ambient Temperature : 23.5 °C; Liquid Temperature : 22.5 °C

DASY5 Configuration:

- Probe: EX3DV4 - SN3819; ConvF(7.69, 7.69, 7.69); Calibrated: 2018.01.31;
- Sensor-Surface: 1.4mm (Mechanical Surface Detection)
- Electronics: DAE4 Sn1437; Calibrated: 2018.10.15
- Phantom: SAM1; Type: QD000P40CD; Serial: TP:1670
- Measurement SW: DASY52, Version 52.8 (8); SEMCAD X Version 14.6.10 (7331)

Ch26340/Area Scan (71x131x1): Interpolated grid: dx=15mm, dy=15mm
Maximum value of SAR (interpolated) = 0.941 W/kg

Ch26340/Zoom Scan (5x5x7)/Cube 0: Measurement grid: dx=8mm, dy=8mm, dz=5mm
Reference Value = 4.053 V/m; Power Drift = 0.06 dB
Peak SAR (extrapolated) = 1.10 W/kg
SAR(1 g) = 0.684 W/kg; SAR(10 g) = 0.396 W/kg
Maximum value of SAR (measured) = 0.908 W/kg



58_LTE Band 2_20M_QPSK_1RB_0Offset_Back_15mm_Ch18700

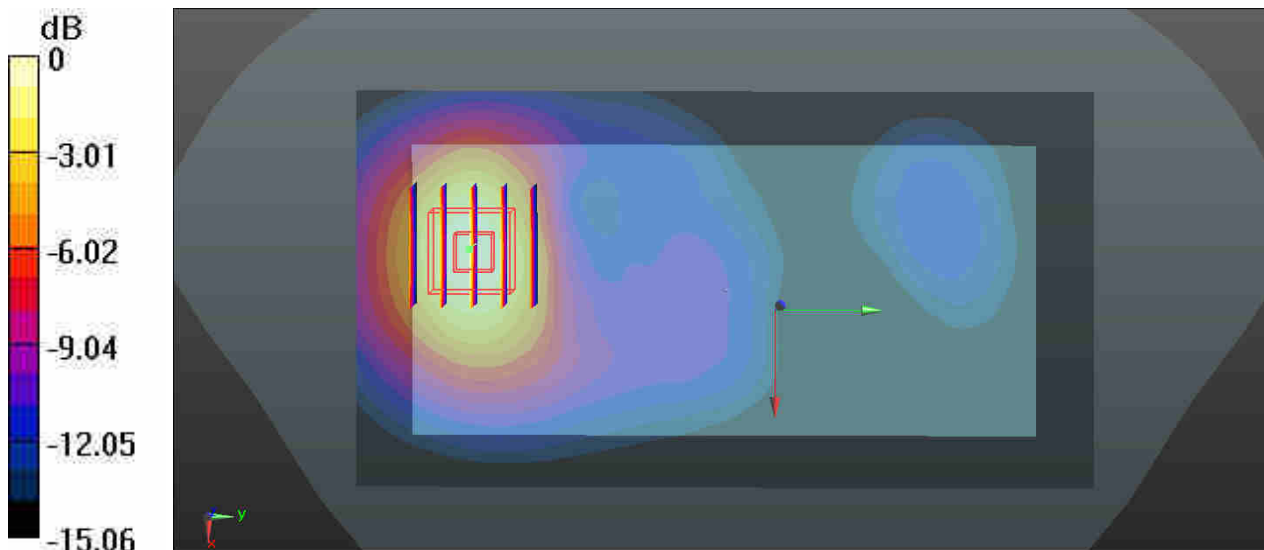
Communication System: UID 0, LTE (0); Frequency: 1860 MHz; Duty Cycle: 1:1
Medium: MSL_1900_181025 Medium parameters used: $f = 1860$ MHz; $\sigma = 1.539$ S/m; $\epsilon_r = 54.359$;
 $\rho = 1000$ kg/m³
Ambient Temperature : 23.5 °C; Liquid Temperature : 22.5 °C

DASY5 Configuration:

- Probe: EX3DV4 - SN3819; ConvF(7.69, 7.69, 7.69); Calibrated: 2018.01.31;
- Sensor-Surface: 1.4mm (Mechanical Surface Detection)
- Electronics: DAE4 Sn1437; Calibrated: 2018.10.15
- Phantom: SAM1; Type: QD000P40CD; Serial: TP:1670
- Measurement SW: DASY52, Version 52.8 (8); SEMCAD X Version 14.6.10 (7331)

Ch18700/Area Scan (71x131x1): Interpolated grid: dx=15mm, dy=15mm
Maximum value of SAR (interpolated) = 1.18 W/kg

Ch18700/Zoom Scan (5x5x7)/Cube 0: Measurement grid: dx=8mm, dy=8mm, dz=5mm
Reference Value = 4.988 V/m; Power Drift = 0.05 dB
Peak SAR (extrapolated) = 1.44 W/kg
SAR(1 g) = 0.902 W/kg; SAR(10 g) = 0.523 W/kg
Maximum value of SAR (measured) = 1.18 W/kg



0 dB = 1.18 W/kg

59_LTE Band 7_20M_QPSK_1RB_49Offset_Back_15mm_Ch20850

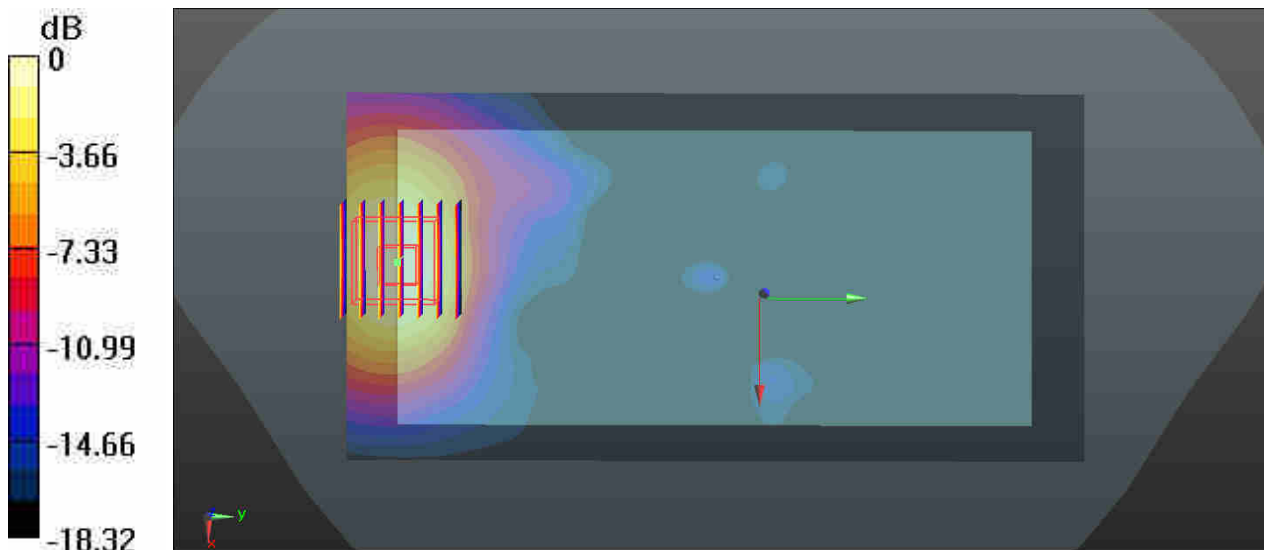
Communication System: UID 0, LTE (0); Frequency: 2510 MHz; Duty Cycle: 1:1
Medium: MSL_2600_181030 Medium parameters used: $f = 2510$ MHz; $\sigma = 2.078$ S/m; $\epsilon_r = 51.267$;
 $\rho = 1000$ kg/m³
Ambient Temperature : 23.5 °C; Liquid Temperature : 22.7 °C

DASY5 Configuration:

- Probe: EX3DV4 - SN3819; ConvF(6.92, 6.92, 6.92); Calibrated: 2018.01.31;
- Sensor-Surface: 1.4mm (Mechanical Surface Detection)
- Electronics: DAE4 Sn1437; Calibrated: 2018.10.15
- Phantom: SAM1; Type: QD000P40CD; Serial: TP:1670
- Measurement SW: DASY52, Version 52.8 (8); SEMCAD X Version 14.6.10 (7331)

Ch20850/Area Scan (81x161x1): Interpolated grid: dx=12mm, dy=12mm
Maximum value of SAR (interpolated) = 0.996 W/kg

Ch20850/Zoom Scan (7x7x7)/Cube 0: Measurement grid: dx=5mm, dy=5mm, dz=5mm
Reference Value = 0 V/m; Power Drift = 0.05 dB
Peak SAR (extrapolated) = 1.27 W/kg
SAR(1 g) = 0.693 W/kg; SAR(10 g) = 0.368 W/kg
Maximum value of SAR (measured) = 0.981 W/kg



0 dB = 0.981 W/kg