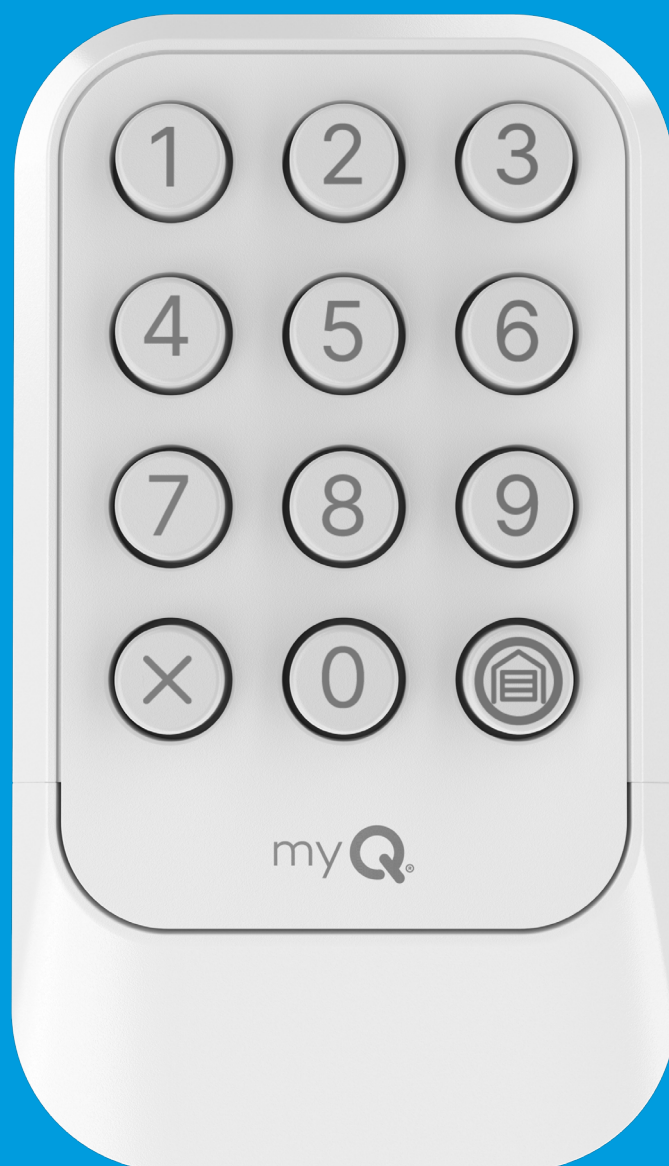




# WIRELESS KEYPAD

MODELS: L979M, CH348, CH348C, & Q348LA

## Product Manual




# Overview

Your wireless keypad is compatible with all Chamberlain®, LiftMaster®, and Craftsman® garage door openers manufactured after 1997 with the exception of Craftsman Series 100. The images throughout this manual are for reference only and your product may look different.

**RECOMMENDED:** Prior to keypad installation, program the wireless keypad to your garage door opener.

## ⚠ WARNING

- To prevent possible SERIOUS INJURY or DEATH from a moving gate or garage door:
- Install Wireless Keypad within sight of the garage door, out of reach of children at a minimum of 5 feet (1.5 m), and away from ALL moving parts of door.
  - ALWAYS keep remote controls out of reach of children. NEVER permit children to operate, or play with the remote controls.
  - Activate gate or door ONLY when it can be seen clearly, is properly adjusted and there are no obstructions to door travel.
  - ALWAYS keep gate or garage door in sight until completely closed. NEVER permit anyone to cross path of moving gate or door.

 **WARNING:** This product can expose you to chemicals including lead, which are known to the State of California to cause cancer or birth defects or other reproductive harm. For more information go to [www.P65Warnings.ca.gov](http://www.P65Warnings.ca.gov).

## Contents

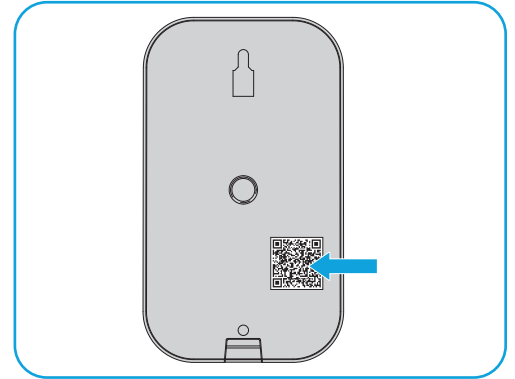
Overview .....	2
Program Your Wireless Keypad to Your Wi-Fi Garage Door Opener Using the myQ App .....	3
Program a Permanent PIN .....	4
Before You Begin .....	4
Method A: Program to a Security+ 3.0 Protocol Garage Door Opener (White Learn Button) Using the Learn Button on Door Control Panel .....	5
Method B: Program to a Security+ 3.0 Protocol Garage Door Opener (White Learn Button) Using the Opener’s Learn Button .....	6
Method C: Program to All Compatible Garage Door Openers (White, Yellow, Purple, Red, & Orange Learn Button) .....	7
Installation .....	10
How to Use the Wireless Keypad .....	11
Change an Existing Permanent PIN .....	12
Program a Temporary PIN .....	13
Replacing the Battery .....	15
Replacement Parts .....	16
Additional Resources .....	16

# Program Your Wireless Keypad to Your Wi-Fi Garage Door Opener Using the myQ App

**HIGHLY RECOMMENDED:** Connect your Security+ 3.0 Wi-Fi Garage Door Opener (White Learn Button) to the myQ app and program your Wireless Keypad to the Garage Door Opener to unlock exciting features that include PIN management, creation of temporary PINs for guest access, and battery charge level.

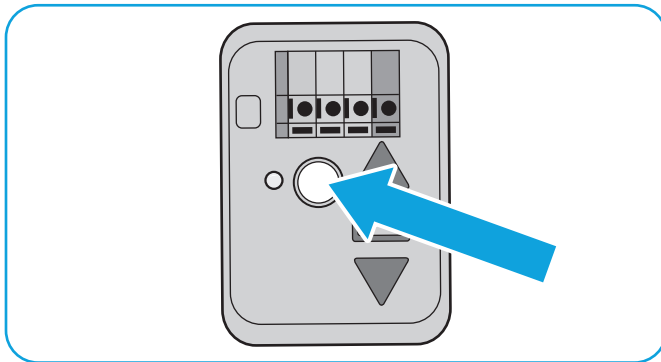
## Security+ 3.0 Garage Door Opener Already Connected to the myQ App

Scan the QR code on the reverse side of your keypad and follow the programming instructions in the myQ app.



## If Your Security+ 3.0 Garage Door Opener is Not Connected to the myQ App

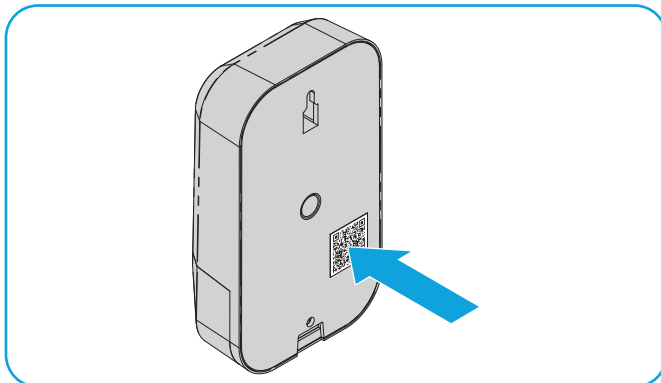
**01** Check that your garage door opener has a white learn button.



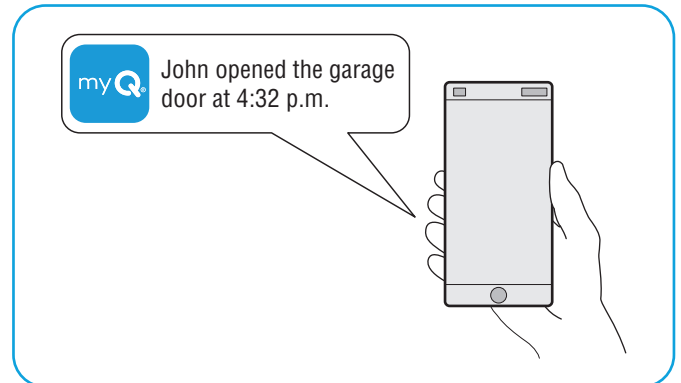
**02** Scan the QR Code below to download the myQ app. Follow the instructions in the myQ app to connect your garage door opener.



**03** Once your garage door opener is connected, scan the QR code on the reverse side of your wireless keypad, and follow the programming instructions in the myQ app.



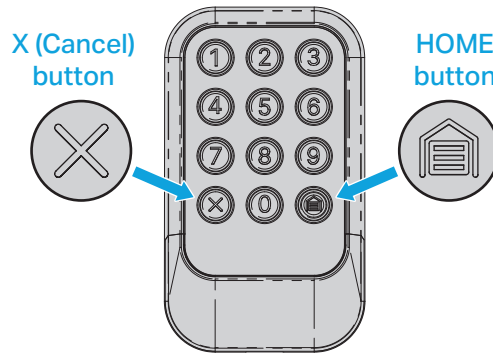
**04** Once your keypad is programmed in the myQ app, you can enjoy the benefits of PIN management, setting up guest PINs, notifications, access history and battery charge level.



# Program a Permanent PIN

## Before You Begin

- Be sure the garage door is clear of ALL obstructions.
- Make sure the garage door opener has a working light because it is a programming indicator.
- Multiple Permanent PINs can be programmed to your Garage Door Opener. To add additional Permanent PINs, follow the same instructions as the first Permanent PIN.



Wireless Keypad Models:  
L979M, CH348, CH348C, & Q348LA

**RECOMMENDATION:** Read through all programming steps before you start.

## Program a Permanent PIN (continued)

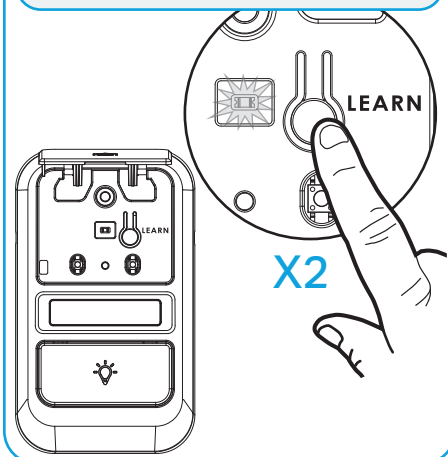
### Method A: Program to a Security+ 3.0 Protocol Garage Door Opener (White Learn Button) Using the Learn Button on Door Control Panel

**RECOMMENDATION:** Have your door control panel product manual available, as models vary in how they set the garage door opener into programming mode.

**01** Follow the instructions below for your door control panel model to set your garage door opener into programming mode.

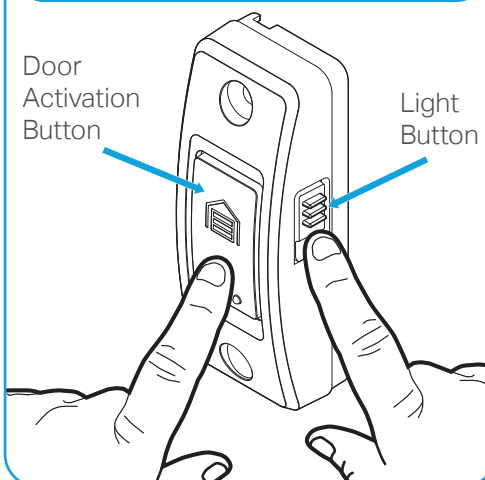
#### Door Control Panel

Lift the door activation panel. Press the **LEARN** button **twice** (after the second press, the LED on the door control panel will pulse repeatedly).



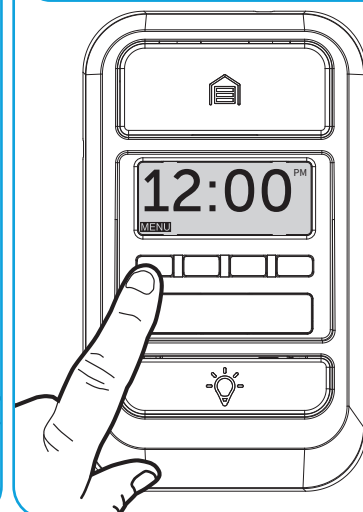
#### Door Control Push Button

Press and hold the light button, then press and release the door activation button. The button LED will begin to flash.

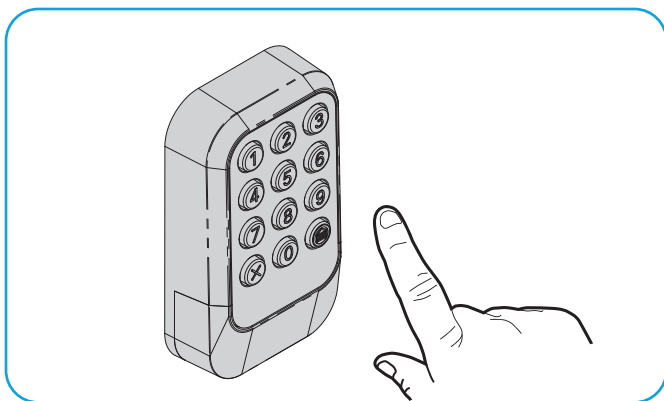


#### Smart Door Control Panel

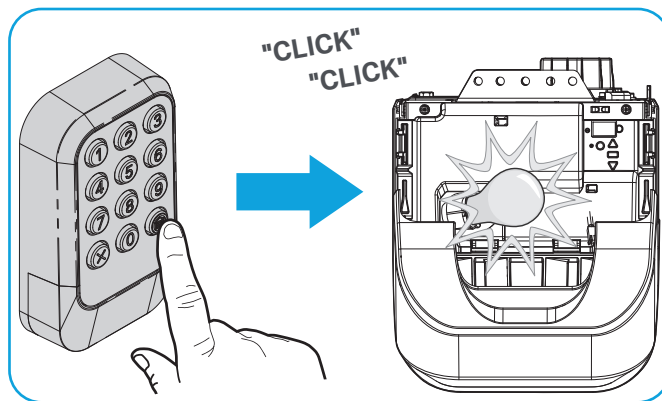
Select **MENU**, then select **PROGRAM** and follow on screen instructions.



**02** Within 30 seconds, enter a 4-8 digit personal identification number (PIN) of your choice.



**03** Press and hold the HOME button until the garage door opener lights flash **and/or** two clicks are heard.

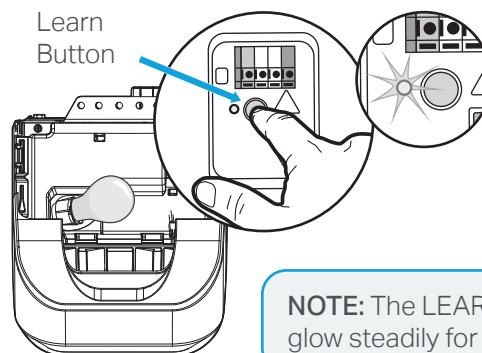
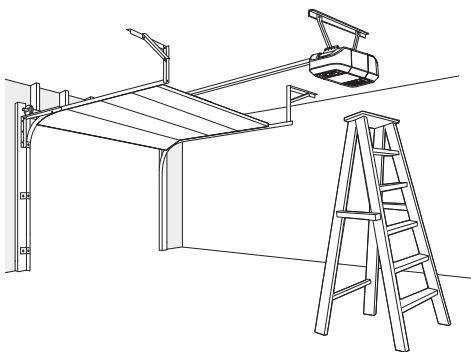


**TEST FOR SUCCESS:** With the garage door closed, enter the PIN you programmed and press the HOME button. The garage door opener will open the door. If the garage door does not open, repeat the programming steps.

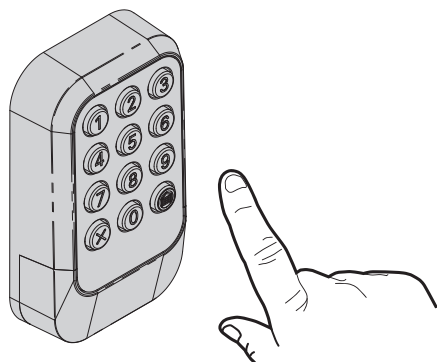
## Program a Permanent PIN (continued)

### Method B: Program to a Security+ 3.0 Protocol Garage Door Opener (White Learn Button) Using the Opener's Learn Button

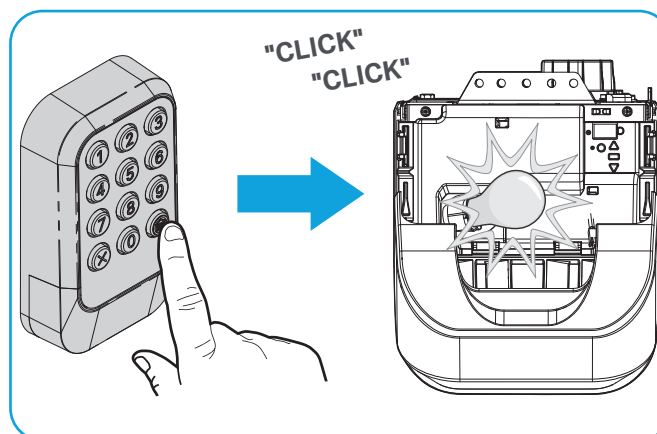
- 01** Locate the LEARN button on your garage door opener (a ladder may be required). Press and **immediately** release the LEARN button.



- 02** Within 30 seconds, enter a 4-8 digit personal identification number (PIN) of your choice.



- 03** Press and hold the HOME button until the garage door opener lights flash **and/or** two clicks are heard.



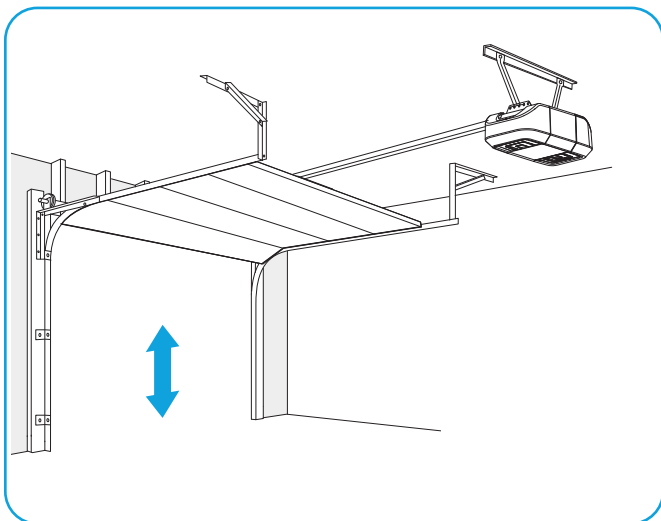
**TEST FOR SUCCESS:** With the garage door closed, enter the PIN you programmed and press the HOME button. The garage door opener will open the door. If the garage door does not open, repeat the programming steps.

## Program a Permanent PIN (continued)

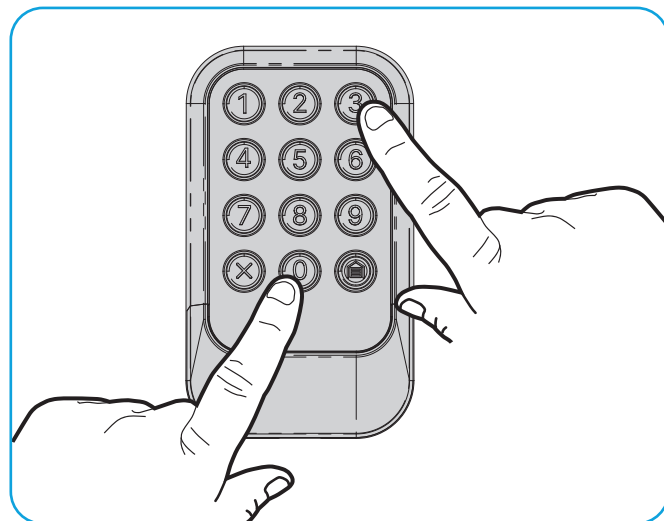
### Method C: Program to All Compatible Garage Door Openers (White, Yellow, Purple, Red, & Orange Learn Button)

**NOTE:** If at any time you wish to exit the following programming steps, press the X button. If you still wish to program a permanent PIN, start again with step 01.

**01** **IMPORTANT:** The remote will activate your garage door during programming. Be sure the door is clear of ALL obstructions.



**02** Simultaneously press and hold the 0 and 3 buttons on the keypad until the red LEDs stay solid (**typically 6 seconds**), then release the buttons.



## Program a Permanent PIN (continued)

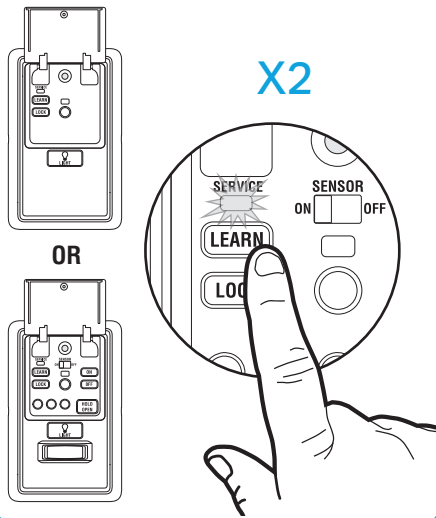
### Method C: Program to All Compatible Garage Door Openers (White, Yellow, Purple, Red, & Orange Learn Button) (continued)

**03 Option 1:** Follow the instructions below for your door control panel model to set your garage door opener into programming mode.

**RECOMMENDATION:** Have your door control panel product manual available, as models vary in how to set the garage door opener into programming mode.

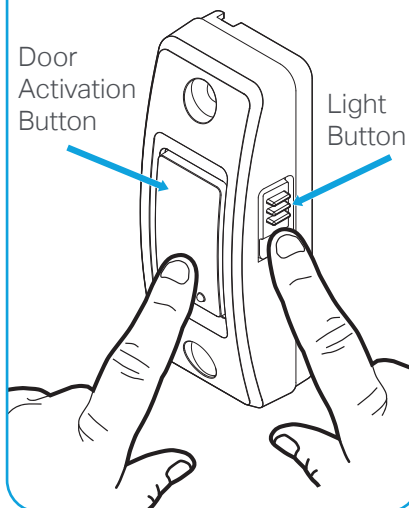
#### Door Control Panel

Lift the door activation panel. Press the **LEARN** button **twice** (after the second press, the LED on the door control panel will pulse repeatedly).



#### Door Control Push Button

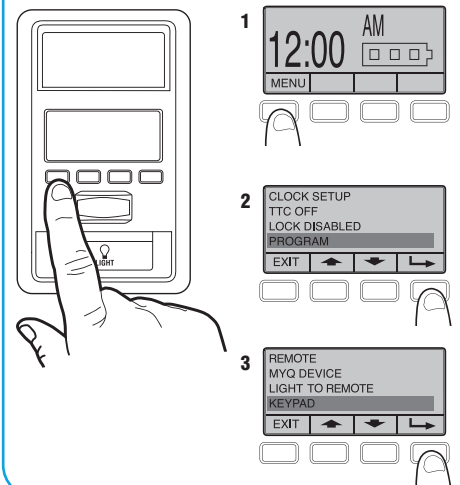
Press and hold the light button, then press and release the door activation button. The button LED will begin to flash.



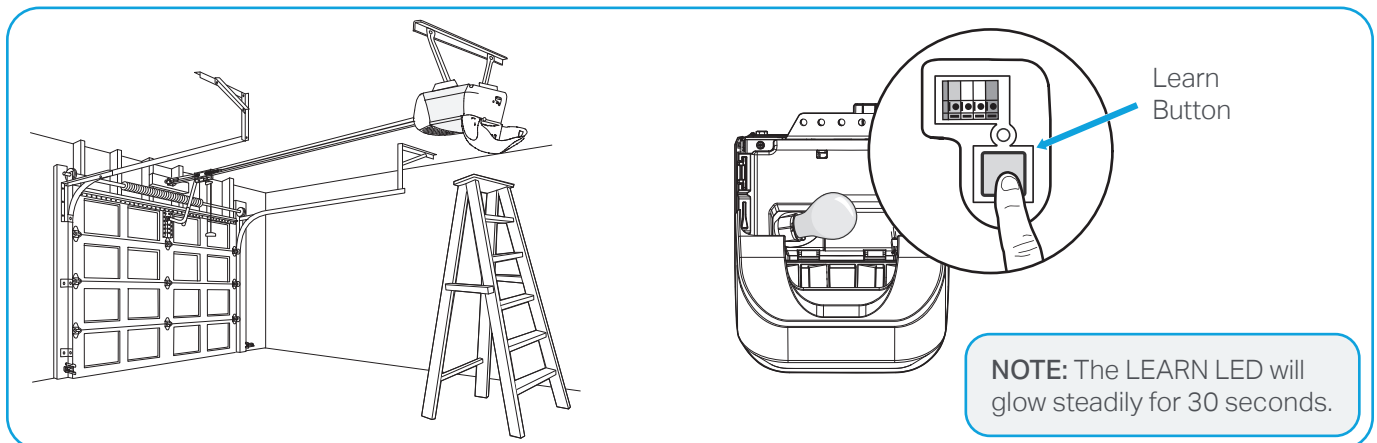
#### Smart Door Control Panel

1. Select **MENU**.
2. Scroll down and select **PROGRAM**.
3. Scroll down and select **KEYPAD**.

**Do not follow on screen instructions. MOVE DIRECTLY TO STEP 04.**



**Option 2:** Locate the LEARN button on your garage door opener (a ladder may be required). Press and **immediately** release the LEARN button.

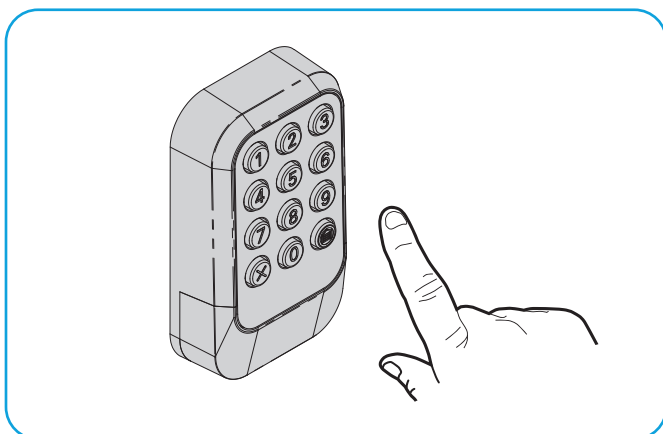




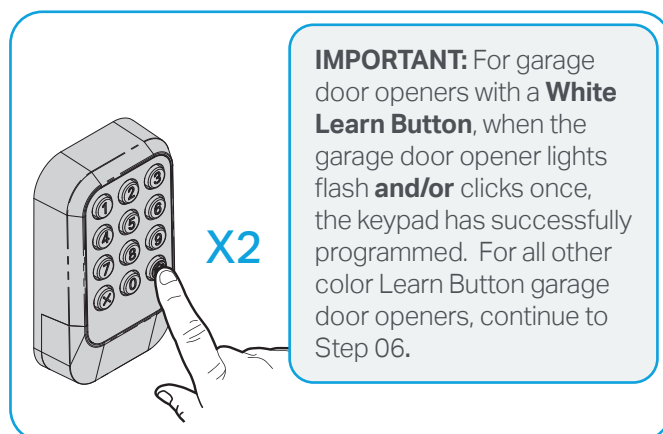
## Program a Permanent PIN (continued)

### Method C: Program to All Compatible Garage Door Openers (White, Yellow, Purple, Red, & Orange Learn Button) (continued)

**04** Within 30 seconds, enter a 4-digit personal identification number (PIN) of your choice.

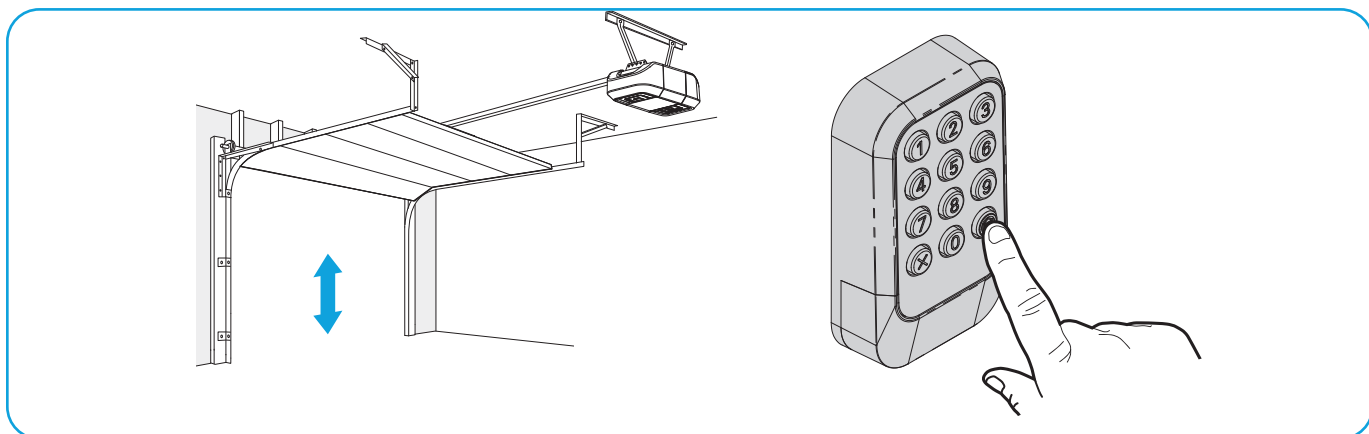


**05** Press the HOME button **twice** (second press must be within 20 seconds of the first press). The red LEDs will blink, and the keypad will initiate sending the pre-programmed codes to the garage door opener.



**IMPORTANT:** For garage door openers with a **White Learn Button**, when the garage door opener lights flash **and/or** clicks once, the keypad has successfully programmed. For all other color Learn Button garage door openers, continue to Step 06.

**06** Wait for the garage door opener to move the door. This can take up to 25 seconds. During this time, your garage door opener light might flash. When the garage door opener moves, **within 3 seconds**, press and release the HOME button on the keypad to confirm the code and exit programming.

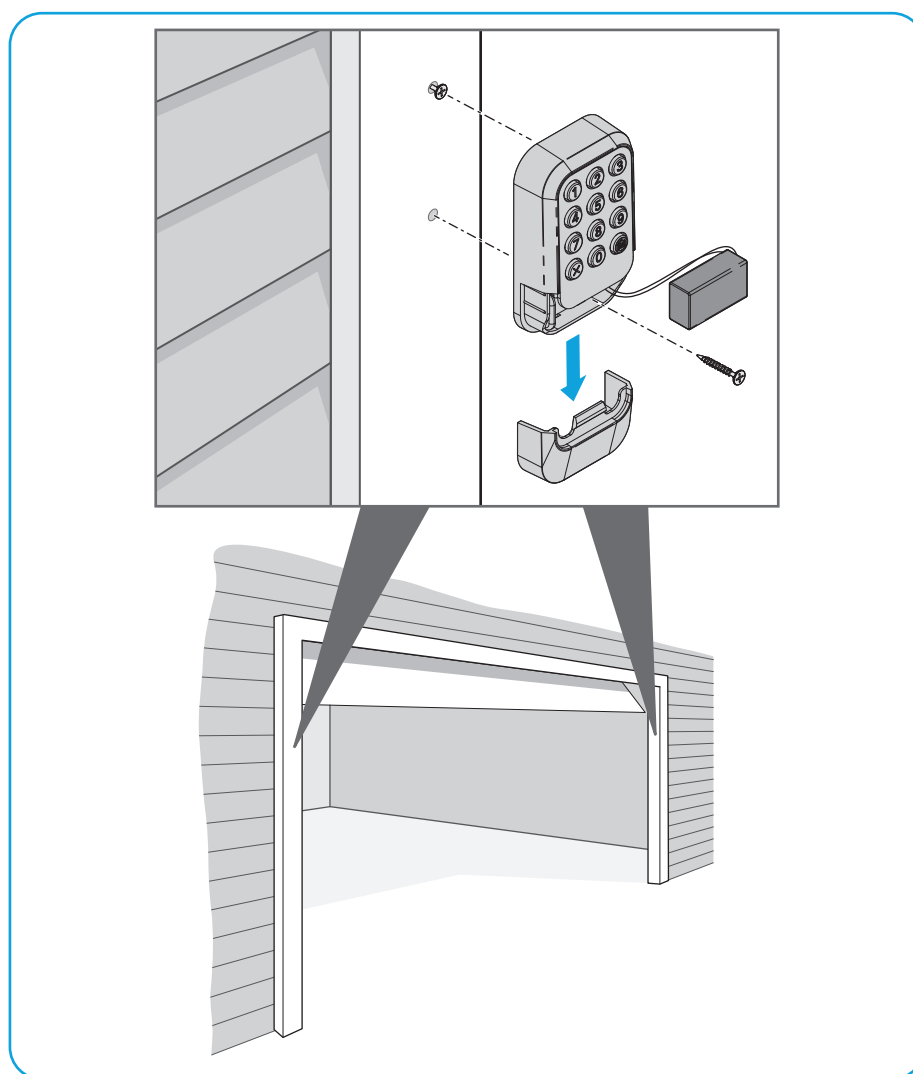


**TEST FOR SUCCESS:** With the garage door closed, enter the PIN you programmed and press the HOME button. The garage door opener will open the door. If the garage door does not open, repeat the programming steps.

# Installation

**NOTE:** If you currently have a LiftMaster, Chamberlain, Craftsman, or Raynor brand keypad installed at your home, this new keypad may fit with your current keypad's mounting holes. You can avoid drilling new holes if you remove your current keypad and use the same mounting locations.

1. Select a location to mount the keypad at a minimum height of 5 feet (1.5 m) out of the reach of children.
2. Remove battery cover and battery for access to lower mounting hole.
3. Mark where you want the top mounting hole of keypad to be positioned and drill 1/8-inch (3.2 mm) pilot hole.
4. Install the top screw, allowing 1/8 inch (3.2 mm) to protrude above the surface. Position the top mounting hole of the keypad over the top screw.
5. Mark the bottom hole of the keypad (located inside the battery housing) and drill 1/8-inch (3.2 mm) pilot hole. Install the bottom screw. Do not overtighten to avoid cracking the plastic housing.
6. Reinstall battery and replace battery cover.



# How to Use the Wireless Keypad

The garage door opener activates when you press the personal identification number (PIN) and HOME button. The keypad will flash for 15 seconds. During that time the HOME button can be used to stop, start or reverse the door.

If you enter the intended PIN number incorrectly, press the X button to cancel (this can also be done after pressing the HOME button). Then enter the correct PIN number and HOME button to activate the garage door opener.

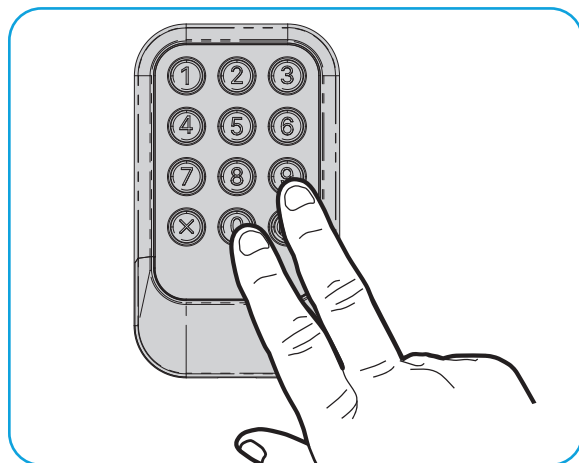
## One Button Close Feature

CLOSE your garage door by pressing **only the HOME button** instead of entering your PIN.

**NOTE:** This feature ONLY closes and is not available on garage door openers manufactured prior to 2006 or an external receiver.

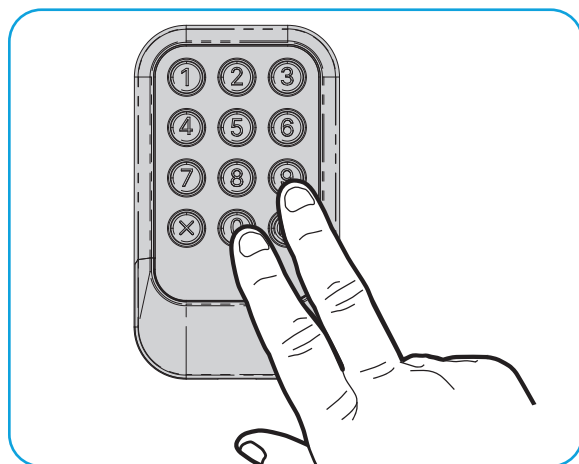
### To deactivate the one button close feature:

Press and hold the 0 and 9 buttons for 10 seconds. The keypad will flash **four** times when the one button close feature is deactivated.



### To activate the one button close feature:

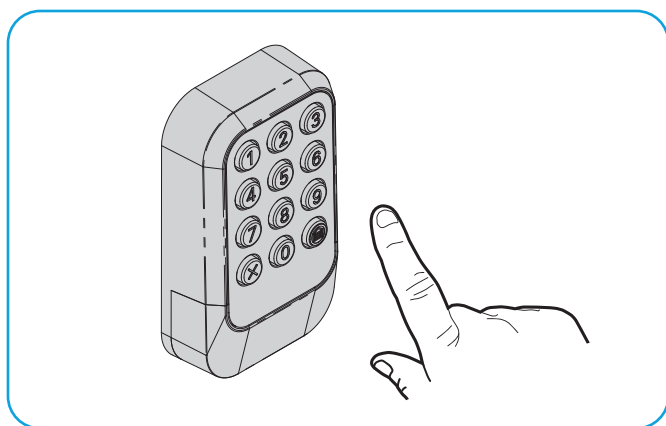
Press and hold the 0 and 9 buttons for 10 seconds. The keypad will flash **twice** when the one button close feature is activated.



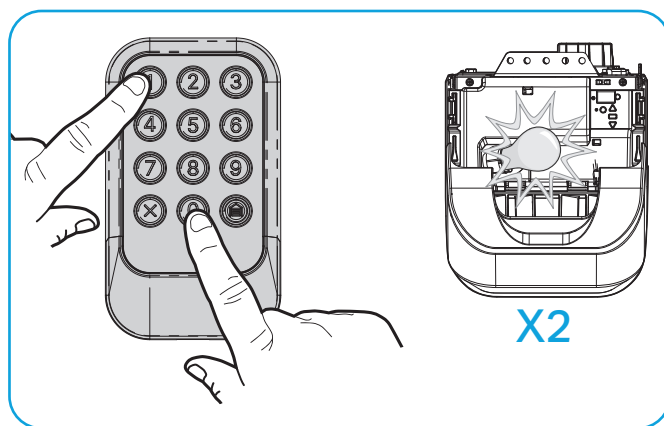
# Change an Existing Permanent PIN

**NOTE:** The myQ app is required for changing an existing PIN for Security+ 3.0 Protocol Garage Door Openers (White Learn Button). See page 3 for instructions to connect your Security+ 3.0 Garage Door Opener to the myQ app.

- 01** Enter the existing permanent PIN you want to change (do not press the HOME button).

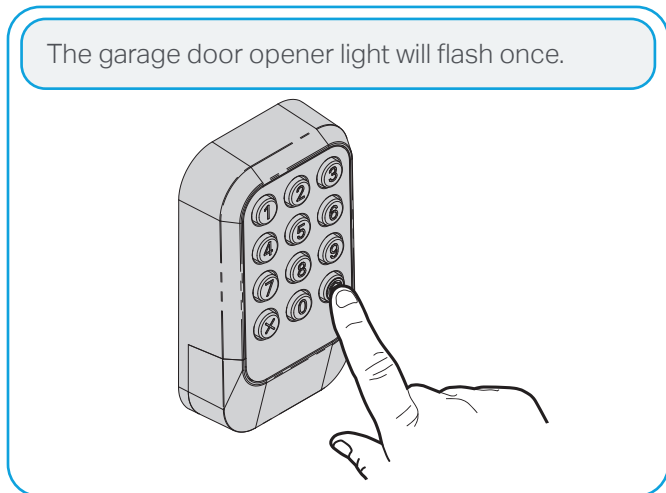


- 02** Simultaneously press and hold the **0 and 1 buttons** until the garage door opener light flashes **twice** (typically within 6 seconds).



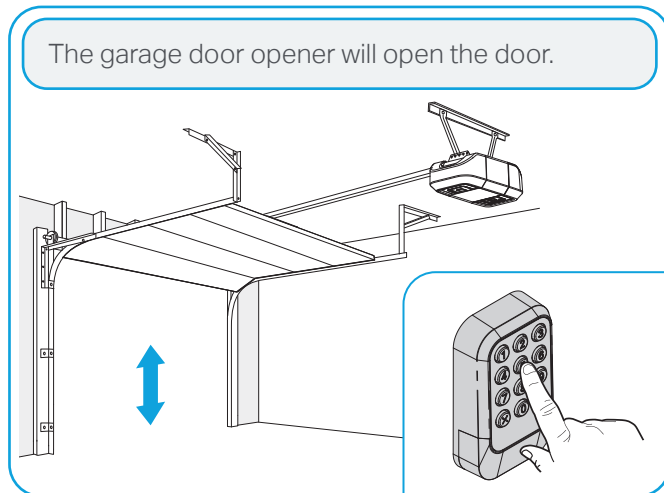
- 03** Enter the new 4-digit PIN of your choice and press the HOME button.

The garage door opener light will flash once.



- 04** Test for success: With the garage door closed, enter the new PIN you just programmed and press the HOME button.

The garage door opener will open the door.



# Program a Temporary PIN

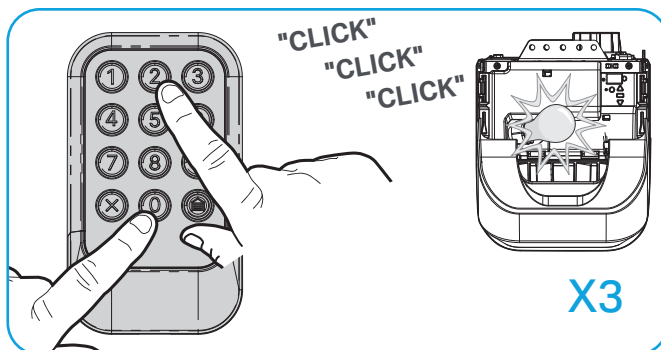
**NOTE:** The myQ app is required for setting Temporary PINs to provide guest access for Security+ 3.0 Protocol Garage Door Openers (White Learn Button). See page 3 for instructions to connect your Security+ 3.0 Garage Door Opener to the myQ app.

A temporary 4-digit personal identification number (PIN) can be programmed to allow guest access. The temporary PIN can be set for a number of hours or a number of door openings. The temporary PIN cannot be the same as any previously programmed permanent PIN.

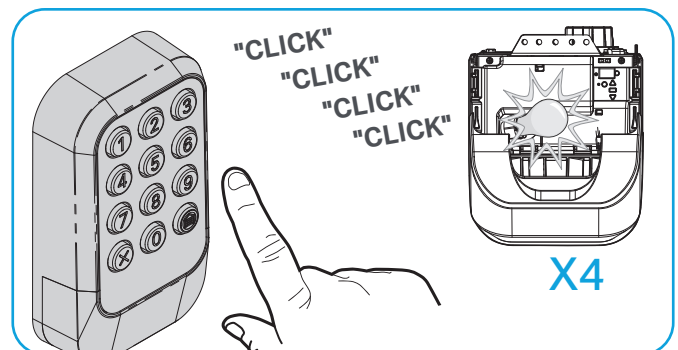
## Option 1: Number of Hours Temporary PIN Will Activate

**NOTE:** Each step below must be started within 15 seconds of completion of the previous step. Read through all programming steps before you start.

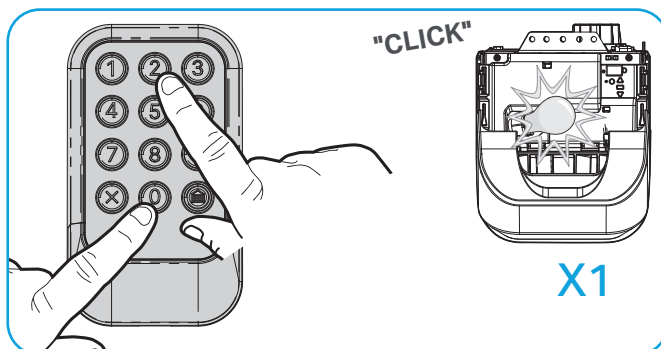
**01** Enter any programmed permanent PIN (do not press the HOME button), and **within 5 seconds simultaneously press and hold the 0 and 2 buttons** on the keypad for six seconds until the garage door opener light flashes **and/or** clicks **three** times, then release the buttons.



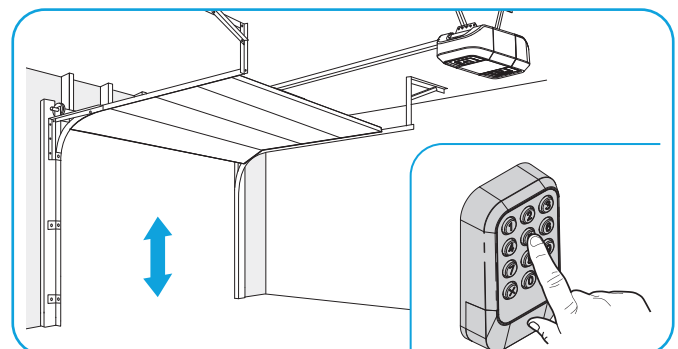
**02** Enter the temporary 4-digit PIN of your choice, then press the HOME button. The garage door opener light will flash **and/or** click **four** times.



**03** Enter the number of hours the temporary PIN will work (1 to 255), then **simultaneously press and release the 0 and 2 buttons**. The garage door opener light will flash **and/or** click **once**.



**04** Test for success: With the garage door closed, enter the temporary PIN you just programmed and press the HOME button. The garage door opener will open the door.



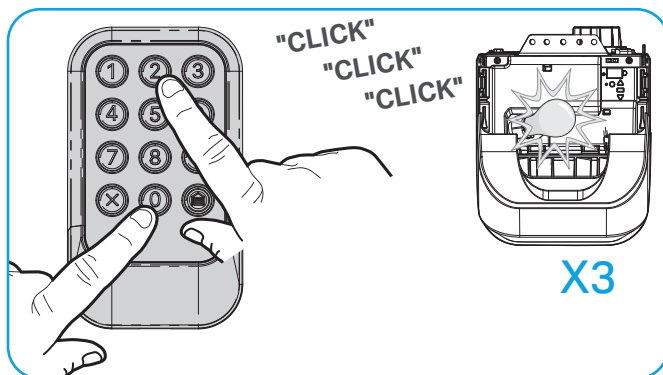
**NOTE:** Clear the temporary PIN by repeating steps 1 through 3, and set the number of hours to 0 at step 3.

## Program a Temporary PIN (continued)

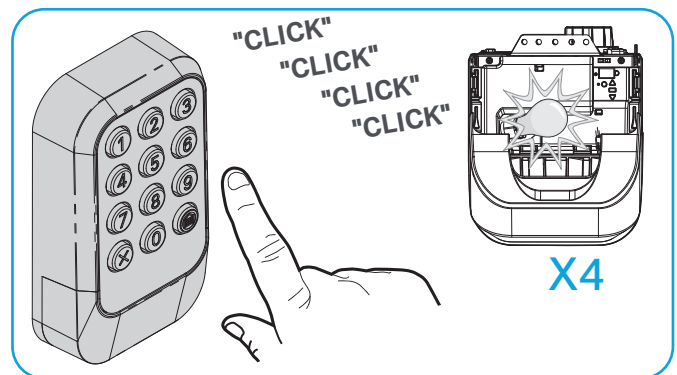
### Option 2: Number of Openings Temporary PIN Will Activate

**NOTE:** Each step below must be started within 15 seconds of completion of the previous step. Read through all programming steps before you start.

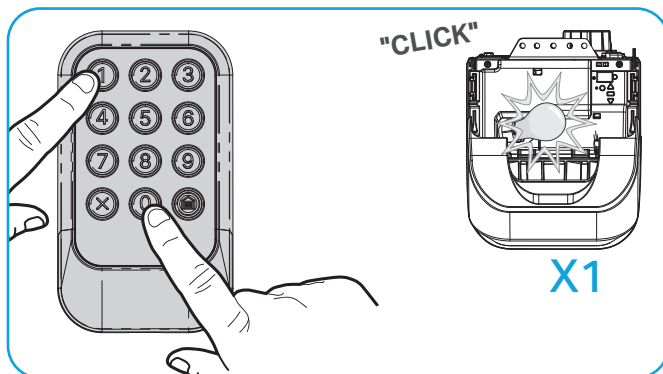
- 01** Enter any programmed permanent PIN (do not press the HOME button), and **within 5 seconds simultaneously press and hold the 0 and 2 buttons** on the keypad for six seconds until the garage door opener light flashes **and/or** clicks **three** times, then release the buttons.



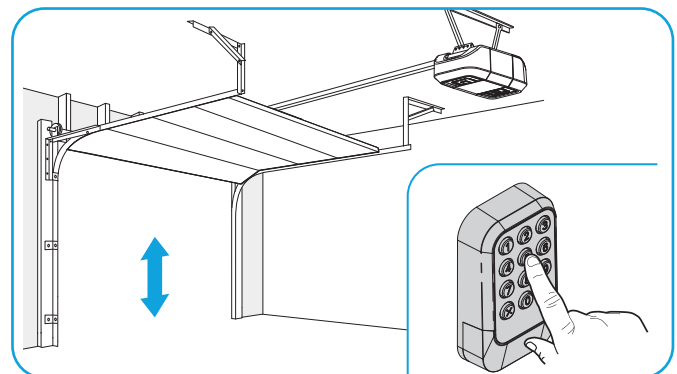
- 02** Enter the temporary 4-digit PIN of your choice, then press the HOME button. The garage door opener light will flash **and/or** click **four** times.



- 03** Enter the number of openings the temporary PIN will work (1 to 255), then **simultaneously press and release the 0 and 1 buttons**. The garage door opener light will flash **and/or** click **once**.



- 04** Test for success: With the garage door closed, enter the temporary PIN you just programmed and press the HOME button. The garage door opener will open the door. **The test uses up one opening.**



**NOTE:** Use the HOME button to close the garage door. Using the "Openings" temporary PIN to close the garage door will use up one opening.

**NOTE:** Clear the temporary PIN by repeating steps 1 through 3, and set the number of hours to 0 at step 3.

# Replacing the Battery

## ⚠ WARNING

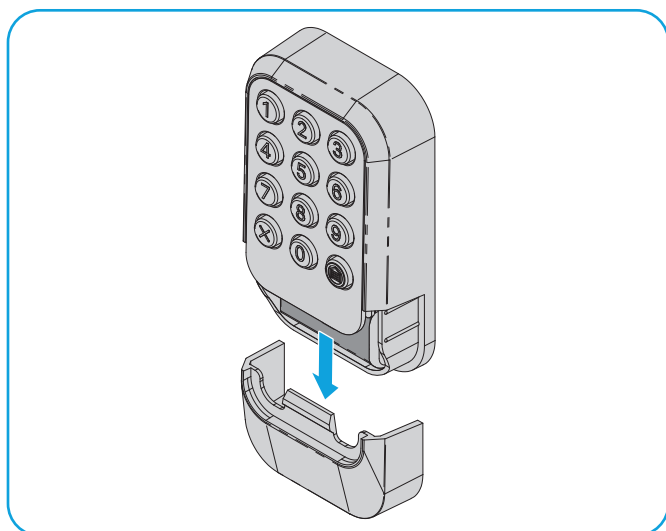
To prevent possible SERIOUS INJURY or DEATH:

- NEVER allow small children near batteries.
- If battery is swallowed, immediately notify doctor.

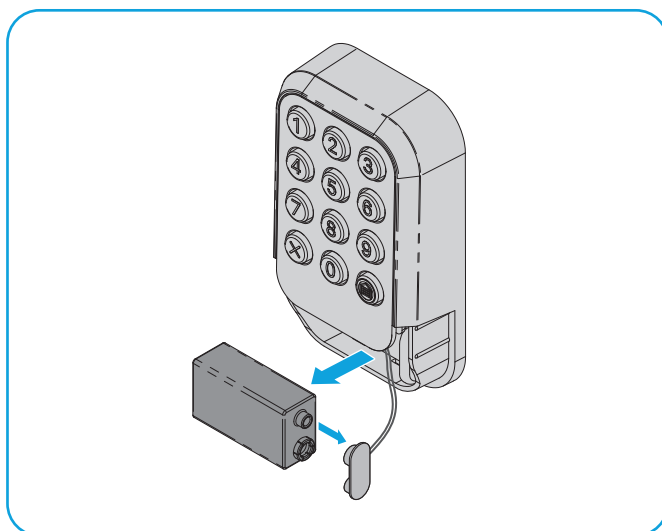
The LEDs on your wireless keypad will become dim or stop flashing when the battery is low and needs to be replaced. Replace the battery with a new 9V battery. Dispose of the old battery properly.

To replace battery, follow the instructions as shown below.

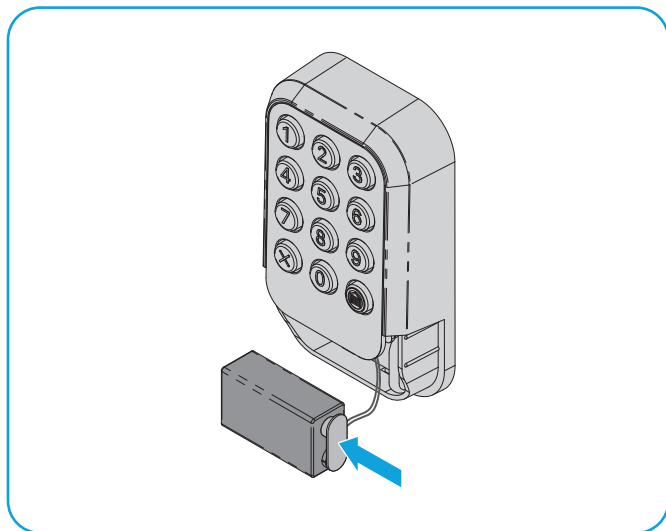
**01** Slide the battery cover down to remove.



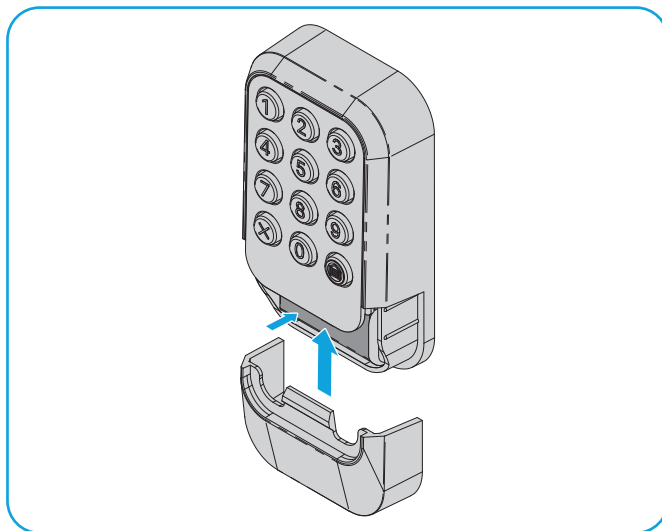
**02** Pull battery out of the housing and remove battery from the keypad power leads.



**03** Connect the new battery to the keypad power leads.



**04** Place the battery inside the keypad housing and replace the battery cover.



## Replacement Parts

---

Description	Part Number
Keypad Battery Cover	041-0495-000

## Additional Resources

---

### One Year Limited Warranty

The Chamberlain Group LLC ("Seller") warrants to the first consumer purchaser of this product that it is free from defect in materials and/or workmanship for a period of 1 year from the date of purchase.

For more information, visit [www.myq.com/warranty](http://www.myq.com/warranty)

### Contact Us

For additional information or assistance, please visit: [support.chamberlaingroup.com](http://support.chamberlaingroup.com)

NOTICE: This device complies with part 15 of the FCC rules and Innovation, Science and Economic Development Canada license-exempt RSSs. Operation is subject to the following two conditions: (1) This device may not cause harmful interference, and (2) this device must accept any interference received, including interference that may cause undesired operation. Any changes or modification not expressly approved by the party responsible for compliance could void the user's authority to operate the equipment.

©2025 The Chamberlain Group LLC

myQ and the myQ logo are trademarks, service marks, and/or registered trademarks of The Chamberlain Group LLC. All other trademarks, service marks and product names used herein are the property of their respective owners.

114-6075-000

The Chamberlain Group LLC, 300 Windsor Drive, Oak Brook, IL, 60523, United States