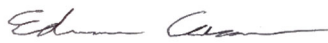
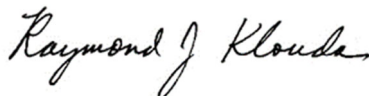




Engineering Test Report No. 2402413-06

Report Date	July 3, 2025
Manufacturer Name	The Chamberlain Group LLC
Manufacturer Address	300 Windsor Dr Oak Brook, IL 60523
Test Item Name Model No.	Doublemint 900-15607-5
Date Received	March 7, 2025
Assessment Dates	March 10, 2025 – March 31, 2025
Specifications	FCC "Code of Federal Regulations" Title 47 Part 1, Subpart I FCC 447498 D04 Interim General RF Exposure Guidance v01 RSS-102 Issue 6
Test Facility	Elite Electronic Engineering, Inc. 1516 Centre Circle, Downers Grove, IL 60515
Signature	
Tested by	Edwin Casas
Signature	
Approved by	Raymond J. Klouda, Registered Professional Engineer of Illinois – 44894
PO Number	4900099025

This report is for your exclusive use. Any copying or replication of this report to or for any other person or entity, or use of our name or trademark, is permitted only with our prior written permission. This report sets forth our findings solely with respect to the test samples identified herein. The results set forth in this report are not indicative or representative of the quality or characteristics of the lot from which a test sample was taken or any similar or identical product unless specifically and expressly noted. Our report includes the results thereof based upon the information that you provided to us. You have 60 days from date of issuance of this report to notify us of any material error or omission caused by our negligence, provided, however, that such notice shall be in writing and shall specifically address the issue you wish to raise. A failure to raise such issue within the prescribed time shall constitute your unqualified acceptance of the completeness of this report, the tests conducted and the correctness of the report contents.

This report shall not be reproduced, except in full, without the written approval of Elite Electronic Engineering Inc.

The data presented in this test report pertains to the EUT on the test dates specified. Additionally, the assessment results presented in this test report are only valid at the separation distance stated in section 8. The results in this test report shall not be used to claim product exemption or conformity at separation distances not covered in this report. Any electrical or mechanical modifications made to the EUT subsequent to the specified test date will serve to invalidate the data and void this certification. This report must not be used to claim product certification, approval, or endorsement by A2LA, NIST, or any agency of the Federal Government.

Table of Contents

1.	Report Revision History	3
2.	Introduction	4
3.	Subject of Investigation	4
4.	Standards and Requirements	4
5.	Sample Calculations	4
6.	Photographs of EUT	6
7.	Limits and Requirements	7
7.1.	Requirements mandated by the FCC	7
7.2.	Requirements mandated by Innovation, Science and Economic Development Canada	10
8.	Assessment Results	11
8.1.	RF Exposure Evaluation Pertinent to the Requirements of the FCC for Multiple RF Sources	11
8.2.	RF Exposure Evaluation Relevant to the Requirements of the ISED for Multiple RF Sources	12
9.	Statement of Compliance	12
10.	Scope of Accreditation	13

**This report shall not be reproduced, except in full,
without the written approval of Elite Electronic Engineering Inc.**

1. Report Revision History

Revision	Date	Description
–	15 JUL 2025	Initial Release of Engineering Test Report No. 2402413-06

2. Introduction

The FCC and Innovation, Science and Economic Development Canada publish standards regarding the evaluation of the RF Exposure hazard of radio communications devices. An evaluation has been performed on The Chamberlain Group LLC Doublemint Garage Door Opener, Model No. 900-15607-5 pursuant to the relevant requirements.

3. Subject of Investigation

This document presents the demonstration of RF Exposure compliance on a Doublemint, (hereinafter referred to as the Equipment under Test (EUT)). The EUT was identified as follows:

EUT Identification	
Description	Doublemint
Model/Part No.	900-15607-5
S/N	3C00 002 7DB

The EUT is capable of operating in the following bands of the radio spectrum:

Radio Spectrum Bands of Operation	
Security BLE	2400MHz to 2483.5MHz
Sub 1GHz	902MHz to 928MHz
WiFi	2400MHz to 2483.5MHz

4. Standards and Requirements

The tests were performed to selected portions of, and in accordance with the following specifications.

- Federal Communications Commission "Code of Federal Regulations", Title 47, Chapter I, Subchapter A, Part 1, Subpart I, Section 1.1307
- Federal Communications Commission "Code of Federal Regulations", Title 47, Chapter I, Subchapter A, Part 1, Subpart I, Section 1.1310
- KDB 447498 D04 – "RF Exposure Procedures and Equipment Authorization Policies for Mobile and Portable Devices"
- ANSI/IEEE C95.1:1992 – "Safety Levels with Respect to Human Exposure to Radio Frequency Electromagnetic Fields, 3 kHz to 300 GHz,"
- RSS-102, Issue 6 Radio Frequency (RF) Exposure Compliance of Radiocommunication Apparatus (All Frequency Bands)

5. Sample Calculations

The far field power density can be calculated using the following formula:

$$S = \frac{PG}{4\pi R^2} \quad (1)$$

where P is the transmit output power (mW), G is the maximum antenna gain relative to an isotropic antenna (linear) and R is the evaluation distance (cm).

In cases where multiple antennas are utilized for a single signal, the following formula is applied to calculate the maximum antenna gain:

$$Gain (dBi) = G + 10 \log N \quad (2)$$

where N is the number of antennas, G is the gain of a single antenna.

A minimum separation distance can be calculated using the following formulas

$$Minimum Separation Distance = \sqrt{\frac{PG}{4\pi(Power Density Limit)}} \quad (3)$$

where P is the transmit output power (mW) and G is the maximum antenna gain relative to an isotropic antenna (linear).

For sources with frequencies <30MHz

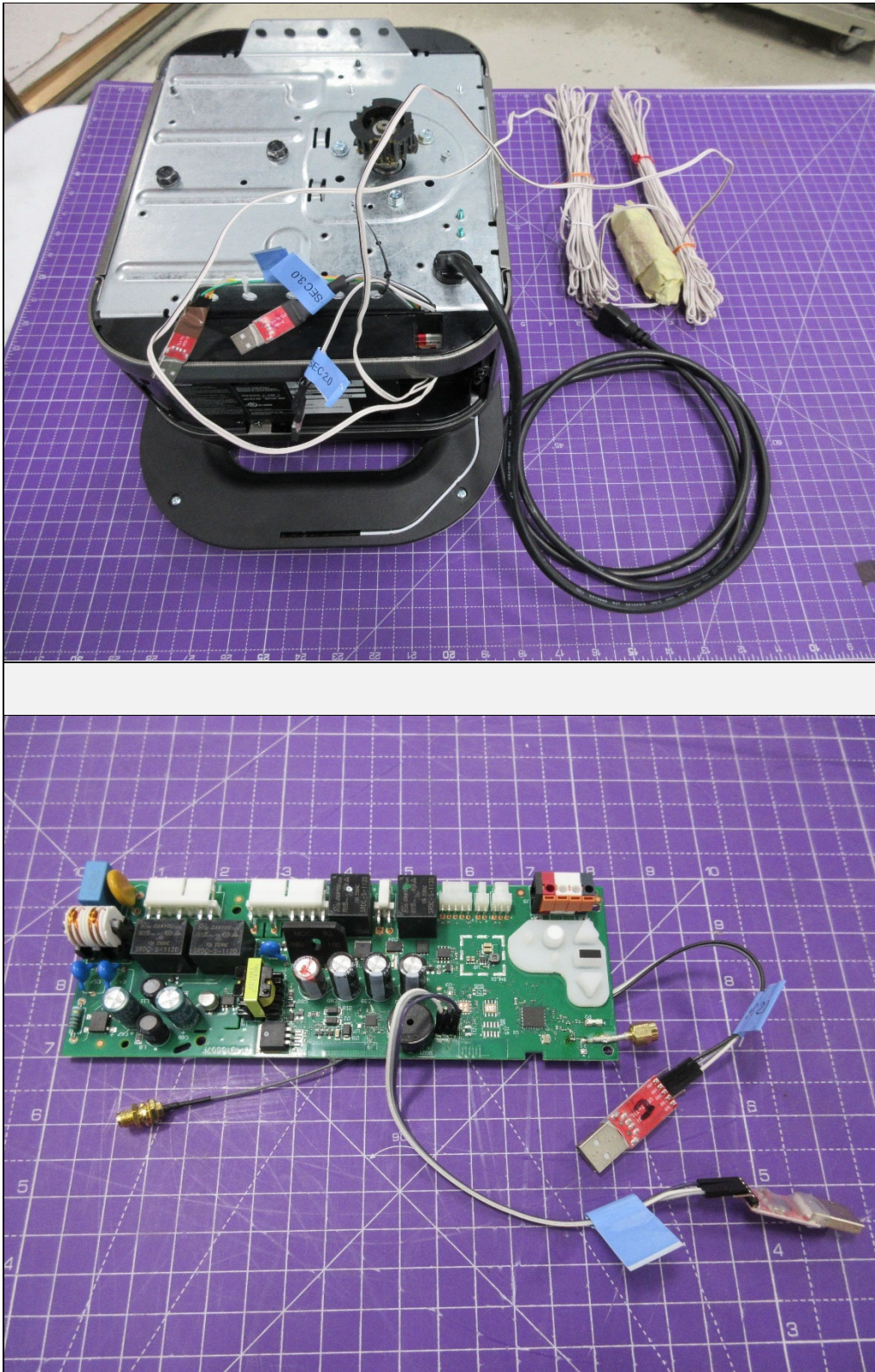
$$Separation Distance = R \left(10^{\frac{(FS_{Limit} - FS_R)}{40}} \right)^{-1} \quad (4)$$

For sources with frequencies >30MHz

$$Separation Distance = R \left(10^{\frac{(FS_{Limit} - FS_R)}{20}} \right)^{-1} \quad (5)$$

where R is the measurement distance, FS_{Limit} is the field strength limit and FS_R is the measured field strength at distance R.

6. Photographs of EUT



7. Limits and Requirements

7.1. Requirements mandated by the FCC

Equipment pursuing compliance to the requirements with respect to the limits of human exposure to RF provided in FCC 1.1310, need follow the criteria in FCC 1.1307(b)(1).

Equipment exemption qualification must be demonstrated pursuant to FCC 1.1307(b)(3).

For single RF sources (i.e., any single portable device, mobile device or fixed RF source): A single RF source is exempt if:

- FCC 1.1307(b)(3)(i)(A) The available maximum time-averaged power is no more than 1 mW, regardless of separation distance.
- FCC 1.1307(b)(3)(i)(B) The available maximum time-averaged power or effective radiated power (ERP), whichever is greater, is less than or equal to the threshold P_{th} (mW) described in the following formula. This method shall only be used at separation distances (cm) from 0.5 centimeters to 40 centimeters and at frequencies from 0.3 GHz to 6 GHz (inclusive). P_{th} is given by:

$$P_{th}(mW) = \begin{cases} ERP_{20cm} \left(\frac{d}{20cm} \right)^x & d \leq 20cm \\ ERP_{20cm} & 20cm < d \leq 40cm \end{cases}$$

With

$$x = -\log_{10} \left(\frac{60}{ERP_{20cm} \sqrt{f}} \right)$$

Where f is in GHz, and

$$ERP_{20cm}(mW) = \begin{cases} 2040f & 0.3GHz \leq f < 1.5GHz \\ 3060 & 1.5GHz \leq f < 6GHz \end{cases}$$

- FCC 1.1307(b)(3)(i)(C) Using Table 1 and the minimum separation distance (R in meters) from the body of a nearby person for the frequency (f in MHz) at which the source operates, the ERP (watts) is no more than the calculated value prescribed for that frequency. For the exemption in Table 1 to apply, R must be at least $\lambda/2\pi$, where λ is the free-space operating wavelength in meters. If the ERP of a single RF source is not easily obtained, then the available maximum time-averaged power may be used in lieu of ERP if the physical dimensions of the radiating structure(s) do not exceed the electrical length of $\lambda/4$ or if the antenna gain is less than that of a half-wave dipole (1.64 linear value).

RF Source frequency (MHz)	Threshold ERP (watts)
0.3 – 1.34	$1920 R^2$
1.34 – 30	$3450 R^2 / f^2$
30 – 300	$3.83 R^2$
300 – 1,500	$0.0128 R^2$
1,500 – 100,000	$19.2 R^2$

Multiple RF sources are exempt if:

- FCC 1.1307(b)(3)(ii)(A) The available maximum time-averaged power of each source is no more

than 1 mW and there is a separation distance of two centimeters between any portion of a radiating structure operating and the nearest portion of any other radiating structure in the same device, except if the sum of multiple sources is less than 1 mW during the time-averaging period, in which case they may be treated as a single source (separation is not required).

- FCC 1.1307(b)(3)(ii)(B) in the case of fixed RF sources operating in the same time-averaging period, or of multiple mobile or portable RF sources within a device operating in the same time averaging period if the sum of the fractional contributions to the applicable thresholds is less than or equal to 1 as indicated in the following equation.

$$\sum_{i=1}^a \frac{P_i}{P_{th,i}} + \sum_{j=1}^b \frac{ERP_j}{ERP_{th,j}} + \sum_{k=1}^c \frac{Evaluated_k}{Exposure\ Limit_k} \leq 1$$

Where:

a = number of fixed, mobile, or portable RF sources claiming exemption using paragraph (b)(3)(i)(B) of this section for P_{th} , including existing exempt transmitters and those being added.

b = number of fixed, mobile, or portable RF sources claiming exemption using paragraph (b)(3)(i)(C) of this section for Threshold ERP, including existing exempt transmitters and those being added.

c = number of existing fixed, mobile, or portable RF sources with known evaluation for the specified minimum distance including existing evaluated transmitters.

P_i = the available maximum time-averaged power or the ERP, whichever is greater, for fixed, mobile, or portable RF source i at a distance between 0.5 cm and 40 cm (inclusive).

$P_{th,i}$ = the exemption threshold power (P_{th}) according to paragraph (b)(3)(i)(B) of this section for fixed, mobile, or portable RF source i .

ERP_j = the ERP of fixed, mobile, or portable RF source j .

$ERP_{th,j}$ = exemption threshold ERP for fixed, mobile, or portable RF source j , at a distance of at least $\lambda/2\pi$ according to the applicable formula of paragraph (b)(3)(i)(C) of this section.

$Evaluated_k$ = the maximum reported SAR or MPE of fixed, mobile, or portable RF source k either in the device or at the transmitter site from an existing evaluation at the location of exposure.

$Exposure\ Limit_k$ = either the general population/uncontrolled maximum permissible exposure (MPE) or specific absorption rate (SAR) limit for each fixed, mobile, or portable RF source k , as applicable from § 1.1310 of this chapter.

If it is determined that the equipment under investigation is not exempt from routine evaluation an assessment must be performed to determine compliance in regard to the RF exposure limits by means of measurement or calculation of the electric field, magnetic field or power density. It may be the case that a minimum separation distance will need to be calculated or measured and maintained from the source of RF to meet the basic restrictions.

In environments where the possibility of simultaneous exposure to fields on different frequencies exists, the exposure shall be considered to be additive. The fraction of the recommended limit incurred within each frequency should be determined, and the sum of all fractional contributions should not exceed 1.0.

Per 1.1310(e)(1), the power density shall not exceed the levels below:

Limits for Occupational/Controlled Exposure			
Frequency Range (MHz)	Electric Field Strength (V/m)	Magnetic Field Strength (A/m)	Power Density (mW/cm ²)
0.3 - 3.0	614	1.63	*100
3.0 – 30	1842 / f	4.89 / f	*900 / f ²
30 – 300	61.4	0.163	1.0
300 – 1,500	—	—	f / 300
1,500 – 100,000	—	—	5
Limits for General/Uncontrolled Exposure			
Frequency Range (MHz)	Electric Field Strength (V/m)	Magnetic Field Strength (A/m)	Power Density (mW/cm ²)
0.3 – 1.34	614	1.63	*100
1.34 – 30	842 / f	2.19 / f	*180 / f ²
30 – 300	27.5	0.073	0.2
300 – 1,500	—	—	f / 1500
1,500 – 100,000	—	—	1.0
f – Frequency in MHz			
* – Plane wave Equivalent Power Density			

7.2. Requirements mandated by Innovation, Science and Economic Development Canada

Equipment exemption qualification must be demonstrated pursuant to RSS-102 Issue 6 section 6. If it is determined that the equipment under investigation is not exempt, it must be demonstrated that the equipment does not exceed the exposure limits in section 5 of RSS-102 Issue 6 or a minimum separation distance must be calculated to ensure that the exposure limits are met.

In environments where the possibility of simultaneous exposure to fields on different frequencies exists, the exposure shall be considered to be additive. The fraction of the recommended limit incurred within each frequency should be determined, and the sum of all fractional contributions should not exceed 1.0. The following formula shall apply:

$$\sum_{i=1}^n \frac{S_{C,1}}{S_{L,1}} + \frac{S_{C,2}}{S_{L,2}} + \frac{S_{C,3}}{S_{L,3}} + \dots \frac{S_{C,n}}{S_{L,n}} \leq 1 \quad (6)$$

where:

S_C is the measured/calculated power density;
 S_L is the RF exposure limit.

Per RSS 102 Section 5, the equipment shall not exceed the levels below:

Specific Absorption Rate (SAR) - SAR Limits for General/Uncontrolled Exposure			
Frequency Range (MHz)	Whole Body SAR Limit (W/kg)	Peak Spatial AVG SAR Limit 1g (W/kg)	Peak Spatial Extremities SAR Limit 10g (W/kg)
0.1 - 6000	0.08	1.6	4

Limits for General/Uncontrolled Exposure			
Frequency Range (MHz)	Electric Field Strength (V/m)	Magnetic Field Strength (A/m)	Power Density (W/m ²)
0.003 – 10*	83	90	—
0.1 – 10*	—	0.73 / f	—
1.1 – 10*	87 / f ^{0.5}	—	—
10 – 20	27.46	0.0728	2
20 – 48	58.07 / f ^{0.25}	0.1540 / f ^{0.25}	8.944 / f ^{0.5}
48 – 300	22.06	0.05852	1.291
300 – 6000	3.142 f ^{0.3417}	0.008335 f ^{0.3417}	0.02619 f ^{0.6834}
6000 – 15000	61.4	0.163	10
15000 – 150000	61.4	0.163	10
150000 – 300000	0.158 f ^{0.5}	4.21x10 ⁻⁴ f ^{0.5}	6.67x10 ⁻⁵ f
f – Frequency in MHz			
*Limits only apply to Specific Absorption Rate and Nerve Stimulation requirements.			

8. Assessment Results

The following evaluations were performed at a separation distance of 20cm. The separation distance was measured based on the minimum use case separation between the radiating element of the RF source and the end user.

8.1. RF Exposure Evaluation Pertinent to the Requirements of the FCC for Multiple RF Sources

The tables below contain the highest measured, calculated or reported output powers for each RF source.

Radio Access Technology	f Transmit Frequency (MHz)	ERP (mW)	EIRP (mW)
Security BLE	2440	7.58577575	12.4451461
Sub 1GHz	902.25	17.5792361	28.840315
WiFi	2462	14.6892628	24.0990543

Standalone Transmission:

Radio Access Technology	f Transmit Frequency (MHz)	ERP (mW)	ERP (W)	ERP _{th} (W)	P _{th} (mW)	Exemption Rule	Exemption Results
Security BLE	2440	7.58577575	0.00758578	0.768	3060	FCC 1.1307(b)(3)(i)(C)	Exempt
Sub 1GHz	902.25	17.5792361	0.01757924	0.461952	1840.59	FCC 1.1307(b)(3)(i)(C)	Exempt
WiFi	2462	14.6892628	0.01468926	0.768	3060	FCC 1.1307(b)(3)(i)(C)	Exempt

Simultaneous Transmission:

Radio Access Technology	f Transmit Frequency (MHz)	ERP (W)	Threshold Limit	Fractional Contribution	Σ Fractional Contributions	Exemption Results
Security BLE	2440	0.00758578	0.768ERP _{th} (W)	0.00987731	0.0670582	Exempt
Sub 1GHz	902.25	0.01757924	0.461952ERP _{th} (W)	0.03805425		
WiFi	2462	0.01468926	0.768ERP _{th} (W)	0.01912664		

The equipment under investigation is determined to be exempt from routine evaluation.

8.2. RF Exposure Evaluation Relevant to the Requirements of the ISED for Multiple RF Sources

The tables below contain the highest measured, calculated or reported output powers for each RF source.

Radio Access Technology	f Transmit Frequency (MHz)	ERP (mW)	EIRP (mW)
Security BLE	2440	7.58577575	12.4451461
Sub 1GHz	902.25	17.5792361	28.840315
WiFi	2462	14.6892628	24.0990543

The following are the results of an evaluation with respect to the applicable exposure limits listed in RSS-102, Issue 6, Section 5.

Standalone Transmission:

Radio Access Technology	f Transmit Frequency (MHz)	Nerve Stimulation Exemption (nA)	EIRP (W)	SAR Exemption Limit (mW)	Localized APD Exemption Limit (mW)	Localized IPD Exemption Limit (mW)	FRL Exemption Limit (W)
Security BLE	2440	NA	0.01244515	NA	NA	NA	2.70528798
Sub 1GHz	902.25	NA	0.02884032	NA	NA	NA	1.37069773
WiFi	2462	NA	0.02409905	NA	NA	NA	2.72193373

Simultaneous Transmission:

Radio Access Technology	f Transmit Frequency (MHz)	Nerve Stimulation Exemption (nA)	EIRP (W)	FRL Exemption Limit (W)	Maximum Fractional Contribution	Σ Sum of Maximum Fractional Contributions
Security BLE	2440	NA	0.01244515	2.70528798	0.0046003	0.03449456
Sub 1GHz	902.25	NA	0.02884032	1.37069773	0.02104061	
WiFi	2462	NA	0.02409905	2.72193373	0.00885365	

The equipment under investigation is determined to be exempt from routine evaluation.

9. Statement of Compliance

The Chamberlain Group LLC Doublemint, Model 900-15607-5 is in compliance with the FCC and Innovation, Science and Economic Development Canada requirements for RF Exposure at a minimum separation distance of 20cm.

10. Scope of Accreditation

SCOPE OF ACCREDITATION TO ISO/IEC 17025:2017

ELITE ELECTRONIC ENGINEERING, INC.
1516 Centre Circle
Downers Grove, IL 60515
Robert Bugielski (QA Manager) Phone: 630 495 9770 ext. 168
Email: rbugielski@elitetest.com
Craig Fanning (EMC Lab Manager) Phone: 630 495 9770 ext. 112
Email: cfanning@elitetest.com
Brandon Lugo (Automotive Team Leader) Phone: 630 495 9770 ext. 163
Email: blugo@elitetest.com
Richard King (FCC/Commercial Team Leader) Phone: 630 495 9770 ext. 123
Email: reking@elitetest.com
Website: www.elitetest.com

ELECTRICAL

Valid To: August 31, 2025

Certificate Number: 1786.01

In recognition of the successful completion of the A2LA Accreditation Program evaluation process, accreditation is granted to this laboratory to perform the following automotive electromagnetic compatibility and other electrical tests:

Test Technology:**Test Method(s)¹:**

Transient Immunity
(Max Voltage 60V/Max current 100A)

ISO 7637-2 (including emissions); ISO 7637-3;
ISO 16750-2:2012, Sections 4.6.3 and 4.6.4;
CS-11979, Section 6.4; CS.00054, Section 5.9;
EMC-CS-2009.1 (CI220); FMC1278 (CI220, CI221, CI222);
GMW 3097, Section 3.5; SAE J1113-11; SAE J1113-12;
ECE Regulation 10.06 Annex 10

Electrostatic Discharge (ESD)
(Up to +/-25kV)

ISO 10605 (2001, 2008);
CS-11979 Section 7.0; CS.00054, Section 5.10;
EMC-CS-2009.1 (CI 280); FMC1278 (CI280); SAE J1113-13;
GMW 3097 Section 3.6

Conducted Emissions

CISPR 25 (2002, 2008), Sections 6.2 and 6.3;
CISPR 25 (2016), Sections 6.3 and 6.4;
CS-11979, Section 5.1; CS.00054, Sections 5.6.1 and 5.6.2;
GMW 3097, Section 3.3.2;
EMC-CS-2009.1 (CE 420); FMC1278 (CE420, CE421,
CE 430, CE440)

(A2LA Cert. No. 1786.01) Revised 05/08/2025



Page 1 of 9

5202 Presidents Court, Suite 220 | Frederick, MD 21703-8515 | Phone: 301 644 3248 | Fax: 240 454 9449 | www.A2LA.org

Test Technology:

Radiated Emissions Anechoic
(Up to 6GHz)

Vehicle Radiated Emissions

Bulk Current Injection (BCI)
(1 to 400MHz 500mA)

Radiated Immunity Anechoic
(Up to 6GHz and 200V/m)
(Including Radar Pulse 600V/m)

Radiated Immunity Magnetic Field

Radiated Immunity Reverb
(360MHz to 6GHz and 100V/m)

Radiated Immunity
(Portable Transmitters)
(Up to 6GHz and 20W)

Vehicle Radiated Immunity (ALSE)

Vehicle Product Specific EMC Standards

Electrical Loads

Stripline

Transverse Electromagnetic (TEM) Cell

Test Method(s)¹:

CISPR 25 (2002, 2008), Section 6.4;
CISPR 25 (2016), Section 6.5;
CS-11979, Section 5.3; CS.00054, Section 5.6.3;
GMW 3097, Section 3.3.1;
EMC-CS-2009.1 (RE 310); FMC1278 (RE310, RE320);

CISPR 12; CISPR 36; ICES-002;
ECE Regulation 10.06 Annex 4;
ECE Regulation 10.06 Annex 5

ISO 11452-4; CS-11979, Section 6.1; CS.00054, Section 5.8.1;
GMW 3097, Section 3.4.1; SAE J1113-4;
EMC-CS-2009.1 (RI112); FMC1278 (RI112);
ECE Regulation 10.06 Annex 9

ISO 11452-2;
CS-11979, Section 6.2; CS.00054, Section 5.8.2;
GMW 3097, Section 3.4.2;
EMC-CS-2009.1 (RI114); FMC1278 (RI114); SAE J1113-21;
ECE Regulation 10.06 Annex 9

ISO 11452-8; FMC 1278 (RI140)

ISO/IEC 61000-4-21; GMW 3097, Section 3.4.3;
EMC-CS-2009.1 (RI114); FMC1278 (RI114);
ISO 11452-11

ISO 11452-9;
EMC-CS-2009.1 (RI115); FMC1278 (RI115);
GMW 3097, Sec 3.4.4

ISO 11451-2; ECE Regulation 10.06 Annex 6

EN 14982; EN ISO 13309; ISO 13766; EN 50498;
EC Regulation No. 2015/208; EN 55012

ISO 16750-2

ISO 11452-5

ISO 11452-3

Test Technology:

Test Method(s)¹:

Emissions

Radiated and Conducted
(3m Semi-anechoic chamber,
up to 40 GHz)

47 CFR, FCC Part 15 B (using ANSI C63.4:2014);
47 CFR, FCC Part 18 (using FCC MP-5:1986);
ICES-001; ICES-003; ICES-005;
IEC/CISPR 11, Ed. 4.1 (2004-06); AS/NZS CISPR 11 (2004);
IEC/CISPR 11 Ed 5 (2009-05) + A1 (2010);
KN 11 (2008-5) with RRL Notice No. 2008-3 (May 20, 2008);
CISPR 11; EN 55011; KS C 9811; CNS 13803 (1997, 2003);
CISPR 14-1; EN 55014-1; AS/NZS CISPR 14.1;
CISPR 16-2-1 (2008); CISPR 16-2-1; KS C 9814-1; KN 14-1;
IEC/CISPR 22 (1997);
EN 55022 (1998) + A1(2000);
EN 55022 (1998) + A1(2000) + A2(2003); EN 55022 (2006);
IEC/CISPR 22 (2008-09); AS/NZS CISPR 22 (2004);
AS/NZS CISPR 22, 3rd Edition (2006); KN 22 (up to 6 GHz);
CNS 13438 (up to 6 GHz); VCCI V-3 (up to 6 GHz);
CISPR 32; EN 55032; KS C 9832; KN 32;
ECE Regulation 10.06 Annex 7 (Broadband);
ECE Regulation 10.06 Annex 8 (Narrowband);
ECE Regulation 10.06 Annex 13 (Conducted);
ECE Regulation 10.06 Annex 14 (Conducted)

Cellular Radiated Spurious Emissions

ETSI TS 151 010-1 GSM; 3GPP TS 51.010-1, Sec 12;
ETSI TS 134 124 UMTS; 3GPP TS 34.124;
ETSI TS 136 124 LTE; E-UTRA; 3GPP TS 36.124

Current Harmonics

IEC 61000-3-2; IEC 61000-3-12;
EN 61000-3-2; KN 61000-3-2;
KS C 9610-3-2; ECE Regulation 10.06 Annex 11

Flicker and Fluctuations

IEC 61000-3-3; IEC 61000-3-11;
EN 61000-3-3; KN 61000-3-3;
KS C 9610-3-3; ECE Regulation 10.06 Annex 12

Immunity

Electrostatic Discharge

IEC 61000-4-2, Ed. 1.2 (2001);
IEC 61000-4-2 (1995) + A1(1998) + A2(2000);
EN 61000-4-2 (1995); EN 61000-4-2 (2009-05);
KN 61000-4-2 (2008-5);
RRL Notice No. 2008-4 (May 20, 2008);
IEC 61000-4-2; EN 61000-4-2; KN 61000-4-2;
KS C 9610-4-2; IEEE C37.90.3 2001

Radiated Immunity

IEC 61000-4-3 (1995) + A1(1998) + A2(2000);
IEC 61000-4-3, Ed. 3.0 (2006-02);
IEC 61000-4-3, Ed. 3.2 (2010);
KN 61000-4-3 (2008-5);
RRL Notice No. 2008-4 (May 20, 2008);
IEC 61000-4-3; EN 61000-4-3; KN 61000-4-3;
KS C 9610-4-3; IEEE C37.90.2 2004

Test Technology:**Test Method(s)¹:****Immunity (cont'd)**

Electrical Fast Transient/Burst

IEC 61000-4-4, Ed. 2.0 (2004-07);
IEC 61000-4-4, Ed. 2.1 (2011);
IEC 61000-4-4 (1995) + A1(2000) + A2(2001);
KN 61000-4-4 (2008-5);
RRL Notice No. 2008-5 (May 20, 2008);
IEC 61000-4-4; EN 61000-4-4; KN 61000-4-4;
KS C 9610-4-4; ECE Regulation 10.06 Annex 15

Surge

IEC 61000-4-5 (1995) + A1(2000);
IEC 61000-4-5, Ed 1.1 (2005-11);
EN 61000-4-5 (1995) + A1(2001);
KN 61000-4-5 (2008-5);
RRL Notice No. 2008-4 (May 20, 2008);
IEC 61000-4-5; EN 61000-4-5; KN 61000-4-5;
KS C 9610-4-5;
IEEE C37.90.1 2012; IEEE STD C62.41.2 2002;
ECE Regulation 10.06 Annex 16

Conducted Immunity

IEC 61000-4-6 (1996) + A1(2000);
IEC 61000-4-6, Ed 2.0 (2006-05);
IEC 61000-4-6 Ed. 3.0 (2008);
KN 61000-4-6 (2008-5);
RRL Notice No. 2008-4 (May 20, 2008);
EN 61000-4-6 (1996) + A1(2001); IEC 61000-4-6;
EN 61000-4-6; KN 61000-4-6; KS C 9610-4-6

Power Frequency Magnetic Field
Immunity (*Down to 3 A/m*)

IEC 61000-4-8 (1993) + A1(2000); IEC 61000-4-8 (2009);
EN 61000-4-8 (1994) + A1(2000);
KN 61000-4-8 (2008-5);
RRL Notice No. 2008-4 (May 20, 2008);
IEC 61000-4-8; EN 61000-4-8; KN 61000-4-8; KS C 9610-4-8

Voltage Dips, Short Interrupts, and Line
Voltage Variations

IEC 61000-4-11, Ed. 2 (2004-03);
KN 61000-4-11 (2008-5);
RRL Notice No. 2008-4 (May 20, 2008);
IEC 61000-4-11; EN 61000-4-11; KN 61000-4-11;
KS C 9610-4-11

Ring Wave

IEC 61000-4-12, Ed. 2 (2006-09);
EN 61000-4-12:2006;
IEC 61000-4-12; EN 61000-4-12; KN 61000-4-12;
IEEE STD C62.41.2 2002

Test Technology:

Generic and Product Specific EMC Standards

Test Method(s)¹:

IEC/EN 61000-6-1; AS/NZS 61000-6-1; KN 61000-6-1;
KS C 9610-6-1; IEC/EN 61000-6-2; AS/NZS 61000-6-2;
KN 61000-6-2; KS C 9610-6-2; IEC/EN 61000-6-3;
AS/NZS 61000-6-3; KN 61000-6-3; KS C 9610-6-3;
IEC/EN 61000-6-4; AS/NZS 61000-6-4; KN 61000-6-4;
KS C 9610-6-4; EN 50130-4; EN 61326-1; EN 50121-3-2;
EN 12895; EN 50270; EN 50491-1; EN 50491-2; EN 50491-3;
EN 55015; EN 60730-1; EN 60945; IEC 60533;
EN 61326-2-6; EN 61800-3; IEC/CISPR 14-2; EN 55014-2;
AS/NZS CISPR 14.2; KN 14-2; KS C 9814-2;
IEC/CISPR 24; AS/NZS CISPR 24; EN 55024; KN 24;
IEC/CISPR 35; AS/NZS CISPR 35; EN 55035; KN 35;
KS C 9835; IEC 60601-1-2; JIS T0601-1-2

TxRx EMC Requirements

EN 301 489-1; EN 301 489-3; EN 301 489-9;
EN 301 489-17; EN 301 489-19; EN 301 489-20

European Radio Test Standards

ETSI EN 300 086-1; ETSI EN 300 086-2;
ETSI EN 300 113-1; ETSI EN 300 113-2;
ETSI EN 300 220-1; ETSI EN 300 220-2;
ETSI EN 300 220-3-1; ETSI EN 300 220-3-2;
ETSI EN 300 330-1; ETSI EN 300 330-2;
ETSI EN 300 440-1; ETSI EN 300 440-2;
ETSI EN 300 422-1; ETSI EN 300 422-2;
ETSI EN 300 328; ETSI EN 301 893;
ETSI EN 301 511; ETSI EN 301 908-1;
ETSI EN 908-2; ETSI EN 908-13;
ETSI EN 303 413; ETSI EN 302 502;
EN 303 340; EN 303 345-2; EN 303 345-3; EN 303 345-4

Canadian Radio Tests

RSS-102 measurement (RF Exposure Evaluation);
RSS-102 measurement (Nerve Stimulation);
SPR-002; RSS-111; RSS-112; RSS-117; RSS-119; RSS-123;
RSS-125; RSS-127; RSS-130; RSS-131; RSS-132; RSS-133;
RSS-134; RSS-135; RSS-137; RSS-139; RSS-140; RSS-141;
RSS-142; RSS-170; RSS-181; RSS-182; RSS-191; RSS-192;
RSS-194; RSS-195; RSS-196; RSS-197; RSS-199; RSS-210;
RSS-211; RSS-213; RSS-215; RSS-216; RSS-220; RSS-222;
RSS-236; RSS-238; RSS-243; RSS-244; RSS-247; RSS-248;
RSS-251; RSS-252; RSS-287; RSS-288; RSS-310; RSS-GEN

Mexico Radio Tests

IFT-008-2015; NOM-208-SCFI-2016

Japan Radio Tests

Radio Law No. 131, Ordinance of MPT No. 37, 1981,
MIC Notification No. 88:2004, Table No. 22-11;
ARIB STD-T66, Regulation 18

Taiwan Radio Tests

LP-0002 (July 15, 2020)

Test Technology:

Test Method(s)¹:

Australia/New Zealand Radio Tests

AS/NZS 4268; Radiocommunications (Short Range Devices) Standard (2014)

Hong Kong Radio Tests

HKCA 1039 Issue 6;
HKCA 1042;
HKCA 1033 Issue 7;
HKCA 1061;
HKCA 1008;
HKCA 1043;
HKCA 1057;
HKCA 1073

Korean Radio Test Standards

KN 301 489-1; KN 301 489-3; KN 301 489-9;
KN 301 489-17; KN 301 489-52; KS X 3124; KS X 3125;
KS X 3130; KS X 3126; KS X 3129

Vietnam Radio Test Standards

QCVN 47:2015/BTTTT; QCVN 54:2020/BTTTT;
QCVN 55:2011/BTTTT; QCVN 65:2013/BTTTT;
QCVN 73:2013/BTTTT; QCVN 74:2020/BTTTT;
QCVN 112:2017/BTTTT; QCVN 117:2020/BTTTT

Vietnam EMC Test Standards

QCVN 18:2014/BTTTT; QCVN 86:2019/BTTTT;
QCVN 96:2015/BTTTT; QCVN 118:2018/BTTTT

*Unlicensed Radio Frequency Devices
(3 Meter Semi-Anechoic Room)*

47 CFR FCC Part 15C, 15D, 15E, 15F, 15G, 15H
(using ANSI C63.10:2013, ANSI C63.17:2013 and
FCC KDB 905462 D02 (v02))

Licensed Radio Service Equipment

47 CFR FCC Parts 20, 22, 24, 25, 27, 30, 73, 74, 80, 87,
90, 95, 96, 97, 101 (using ANSI/TIA-603-E,
TIA-102.CAAA-E, ANSI C63.26:2015)

OTA (Over the Air) Performance

GSM, GPRS, EGPRS
UMTS (W-CDMA)
LTE including CAT M1
A-GPS for UMTS/GSM
LTS A-GPS, A-GLONASS,
SIB8/SIB16
Large Device/Laptop/Tablet Testing
Integrated Device Testing
WiFi 802.11 a/b/g/n/a

CTIA Test Plan for Wireless Device Over-the-Air
Performance (Method for Measurement for Radiated Power
and Receiver Performance) V4.0;
CTIA Test Plan for RF Performance Evaluation of WiFi
Mobile Converged Devices V4.0

Test Technology:
Test Method(s)¹:
Electrical Measurements and Simulation
AC Voltage / Current

(1mV to 5kV) 60 Hz
(0.1V to 250V) up to 500 MHz
(1μA to 150A) 60 Hz

FAA AC 150/5345-10H;
FAA AC 150/5345-43J;
FAA AC 150/5345-44K;
FAA AC 150/5345-46E;
FAA AC 150/5345-47C;
FAA EB 67D

DC Voltage / Current

(1mV to 15 kV) / (1μA to 10A)

Power Factor / Efficiency / Crest Factor

(Power to 30kW)

Resistance

(1mΩ to 4000MΩ)

Surge

(Up to 10 kV / 5 kA) (Combination
Wave and Ring Wave)

On the following products and materials:

Telecommunications Terminal Equipment (TTE), Radio Equipment, Network Equipment, Information Technology Equipment (ITE), Automotive Electronic Equipment, Automotive Hybrid Electronic Devices, Maritime Navigation and Radio Communication Equipment and Systems, Vehicles, Boats and Internal Combustion Engine Driven Devices, Automotive, Aviation, and General Lighting Products, Medical Electrical Equipment, Motors, Industrial, Scientific and Medical (ISM) Radio-Frequency Equipment, Household Appliances, Electric Tools, Low-voltage Switchgear and Control gear, Programmable Controllers, Electrical Equipment for Measurement, Control and Laboratory Use, Base Materials, Power and Data Transmission Cables and Connectors

¹ When the date, edition, version, etc. is not identified in the scope of accreditation, laboratories may use the version that immediately precedes the current version for a period of one year from the date of publication of the standard measurement method, per part C., Section 1 of A2LA R101 - *General Requirements- Accreditation of ISO-IEC 17025 Laboratories*.

Testing Activities Performed in Support of FCC Certification in Accordance with 47 Code of Federal Regulations and FCC KDB 974614, Appendix A, Table A.1²

Rule Subpart/Technology	Test Method	Maximum Frequency (MHz)
<u>Unintentional Radiators</u>		
Part 15B	ANSI C63.4:2014	40000
<u>Industrial, Scientific, and Medical Equipment</u>		
Part 18	FCC MP-5 (February 1986)	40000
<u>Intentional Radiators</u>		
Part 15C	ANSI C63.10:2013	40000

Testing Activities Performed in Support of FCC Certification in Accordance with 47 Code of Federal Regulations and FCC KDB 974614, Appendix A, Table A.1²

Rule Subpart/Technology	Test Method	Maximum Frequency (MHz)
<u>Unlicensed Personal Communication Systems Devices</u>		
Part 15D	ANSI C63.17:2013	40000
<u>U-NII without DFS Intentional Radiators</u>		
Part 15E	ANSI C63.10:2013	40000
<u>U-NII with DFS Intentional Radiators</u>		
Part 15E	FCC KDB 905462 D02 (v02)	40000
<u>UWB Intentional Radiators</u>		
Part 15F	ANSI C63.10:2013	40000
<u>BPL Intentional Radiators</u>		
Part 15G	ANSI C63.10:2013	40000
<u>White Space Device Intentional Radiators</u>		
Part 15H	ANSI C63.10:2013	40000
<u>Commercial Mobile Services (FCC Licensed Radio Service Equipment)</u>		
Parts 22 (cellular), 24, 25 (below 3 GHz), and 27	ANSI/TIA-603-E; TIA-102.CAAA-E; ANSI C63.26:2015	40000
<u>General Mobile Radio Services (FCC Licensed Radio Service Equipment)</u>		
Parts 22 (non-cellular), 90 (below 3 GHz), 95, 97, and 101 (below 3 GHz)	ANSI/TIA-603-E; TIA-102.CAAA-E; ANSI C63.26:2015	40000
<u>Citizens Broadband Radio Services (FCC Licensed Radio Service Equipment)</u>		
Part 96	ANSI/TIA-603-E; TIA-102.CAAA-E; ANSI C63.26:2015	40000
<u>Maritime and Aviation Radio Services</u>		
Parts 80 and 87	ANSI/TIA-603-E; ANSI C63.26:2015	40000
<u>Microwave and Millimeter Bands Radio Services</u>		
Parts 25, 30, 74, 90 (above 3 GHz), 97 (above 3 GHz), and 101	ANSI/TIA-603-E; TIA-102.CAAA-E; ANSI C63.26:2015	40000

Testing Activities Performed in Support of FCC Certification in Accordance with 47 Code of Federal Regulations and FCC KDB 974614, Appendix A, Table A.1²

Rule Subpart/Technology	Test Method	Maximum Frequency (MHz)
<u>Broadcast Radio Services</u> Parts 73 and 74 (below 3 GHz)	ANSI/TIA-603-E; TIA-102.CAAA-E; ANSI C63.26:2015	40000
<u>Signal Boosters</u> Part 20 (Wideband Consumer Signal Boosters, Provider-specific signal boosters, and Industrial Signal Boosters) Section 90.219	ANSI C63.26:2015	40000

² Accreditation does not imply acceptance to the FCC equipment authorization program. Please see the FCC website (<https://apps.fcc.gov/oetcf/eas/>) for a listing of FCC approved laboratories.



Accredited Laboratory

A2LA has accredited

ELITE ELECTRONIC ENGINEERING INC.

Downers Grove, IL

for technical competence in the field of

Electrical Testing

This laboratory is accredited in accordance with the recognized International Standard ISO/IEC 17025:2017 *General requirements for the competence of testing and calibration laboratories*. This accreditation demonstrates technical competence for a defined scope and the operation of a laboratory quality management system (refer to joint ISO-ILAC-IAF Communiqué dated April 2017).



Presented this 15th day of August 2023.



Mr. Trace McInturff, Vice President, Accreditation Services
For the Accreditation Council
Certificate Number 1786.01
Valid to August 31, 2025
Revised May 8, 2025

For the tests to which this accreditation applies, please refer to the laboratory's Electrical Scope of Accreditation.