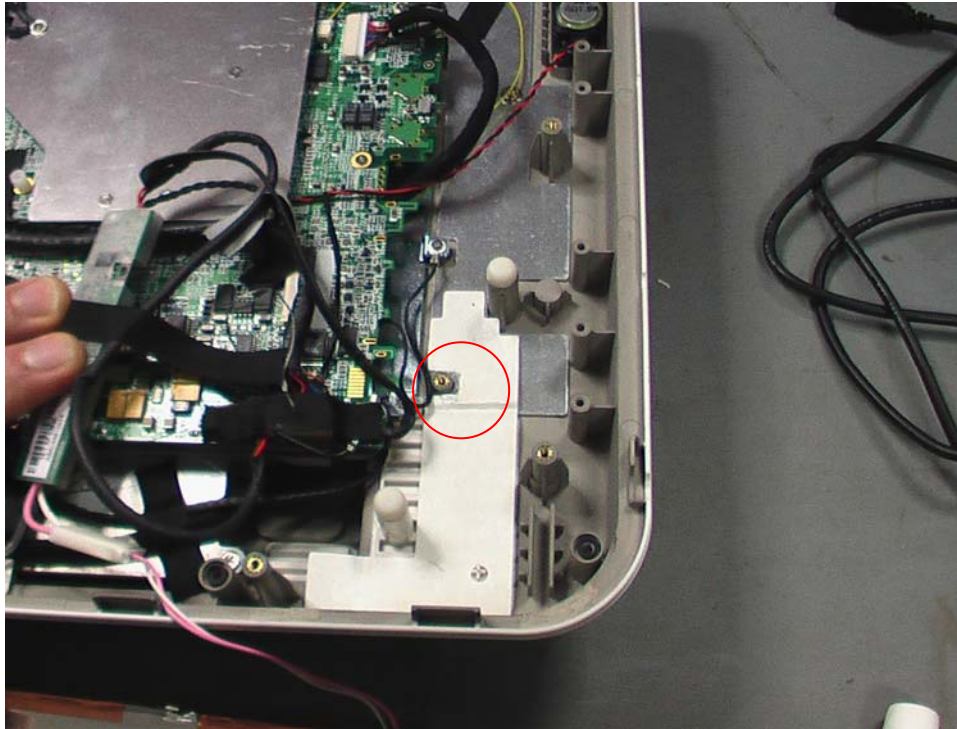


Rework SOP for CV boxes

Item 1:

將 Inverter 底下的 Insulation Sheet 以刀片切開使鎖附的螺絲孔可與 Inverter Ground 完全接觸., 如下圖:

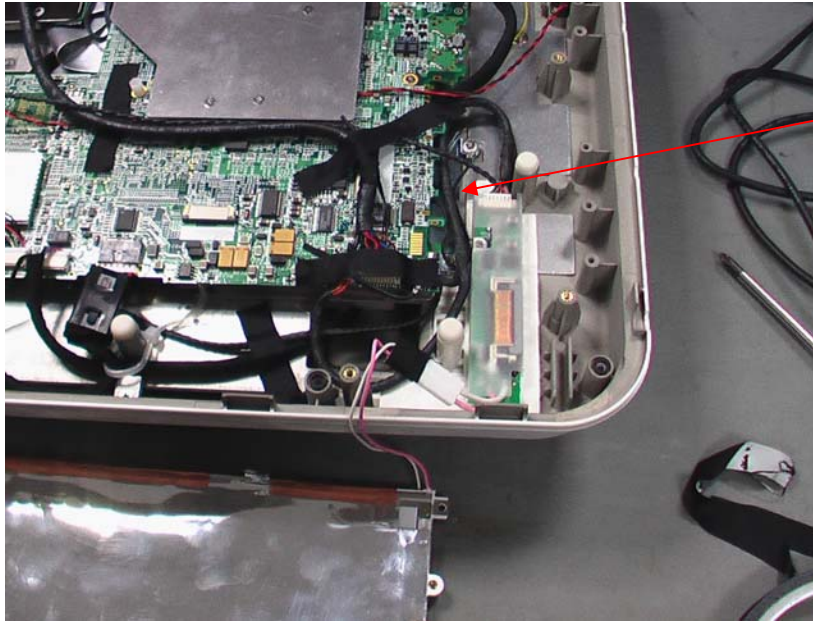
Cut the insulation sheet which under the inverter module to make good grounding,
(For the cutting area please check the following picture and be marked with red circle)



Item 2:

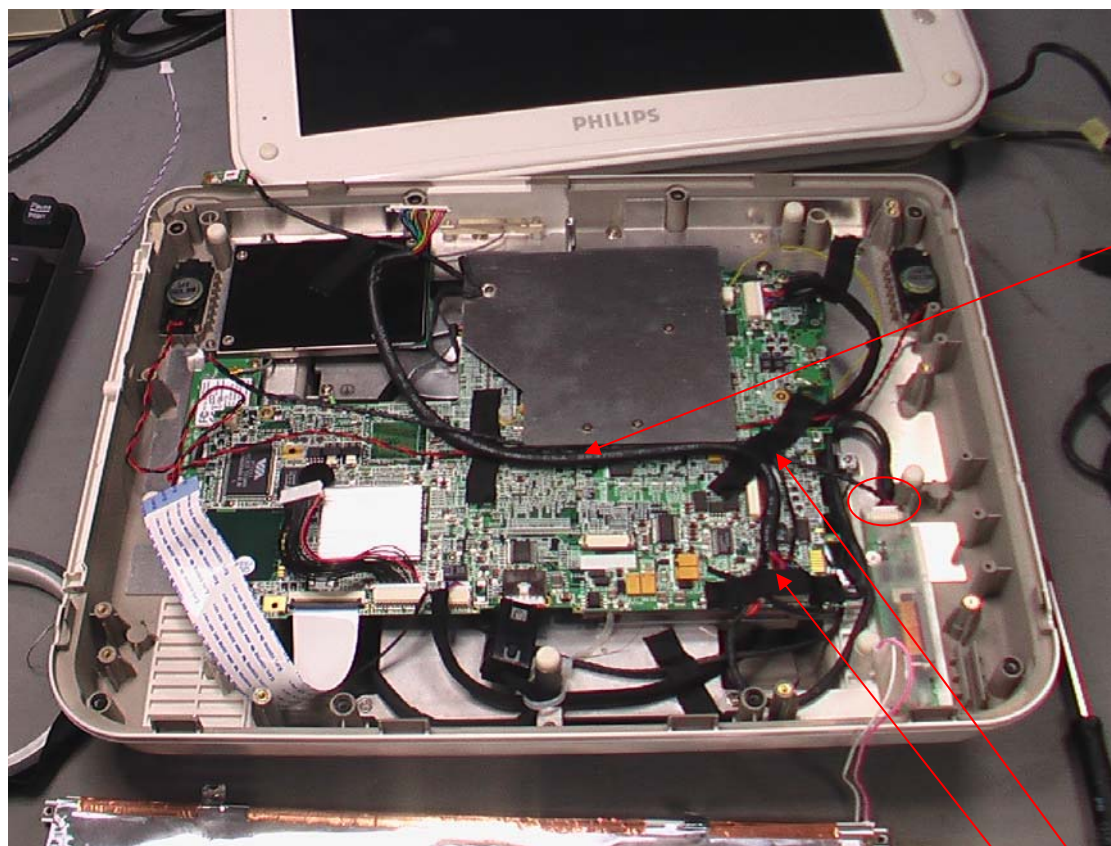
Inverter Cable 走線必須依下圖所示(從 Inverter 左側繞至下方, 勿從 Inverter 右側繞至下方.)

Inverter cable must be routed on left side of inverter module (can not be routed on the right side of inverter module)



Item 3: 將 Inverter Power Enhance Cable 之一端(只有端子那一端)插入原本的 Inverter Cable connector 中(inverter side), 另一端插入 Control Board 的 inverter connector 中, 理線方式及膠帶固定方式務必依下圖所示.

Insert the inverter power enhance cable into the original inverter cable (inverter side), the cable routing way please refer the picture as below, and the other side of inverter power enhance cable please insert into the connector (LCDCN11) of control board, Also please add tapes to fix the cable as below.

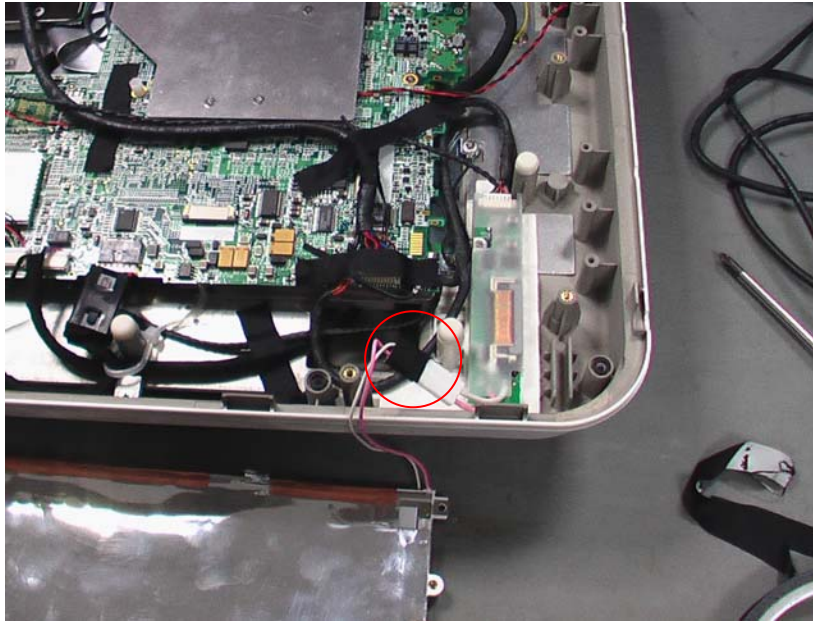


理線
Routing

膠帶
Add Tape

Item 4: 當 LCD 燈管 Cable 與 Inverter 高壓 connector 結合後, 必須以膠帶將結合處包覆.

After the CCFT cable of LCD and HV cable of inverter module combine together, please add tape to fix them to prevent come off.



Item 5:

當 LCD 鎖附於 LCD Bracket 以後, 必須將高壓線套入熱縮套管中, 並依下圖所示將熱縮套管固定. (熱縮套管規格: 內徑= 9.5mm or 10mm, 長度為 60mm)

1. Prepare a tube (internal diameter = 9.5mm or 10mm, length= 60mm)
2. Puts the HV cable into the tube.
3. Then puts the left side of tube into the space as the last picture show.

