

OPERATION MANUAL

LMT-1009 Transmitter & LMR-400 Receiver

FEATURES:

- Simple installation, easy operation
- 67 million codes, self program.
- 6 memory scene settings, no memory loss forever.
- Red LED indicator on transmitter.
- Control 2 lights (main and secondary light)
- Can be controlled by transmitter and or existing house hold mechanical switch.
- Security mode.

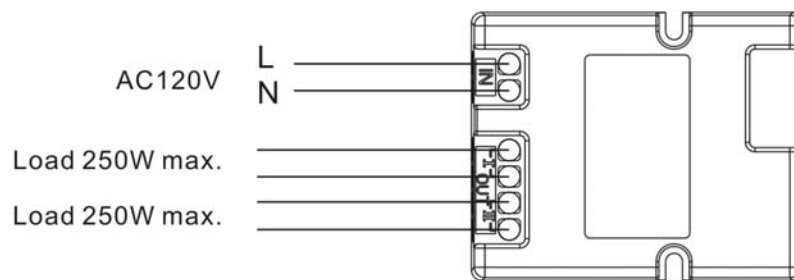
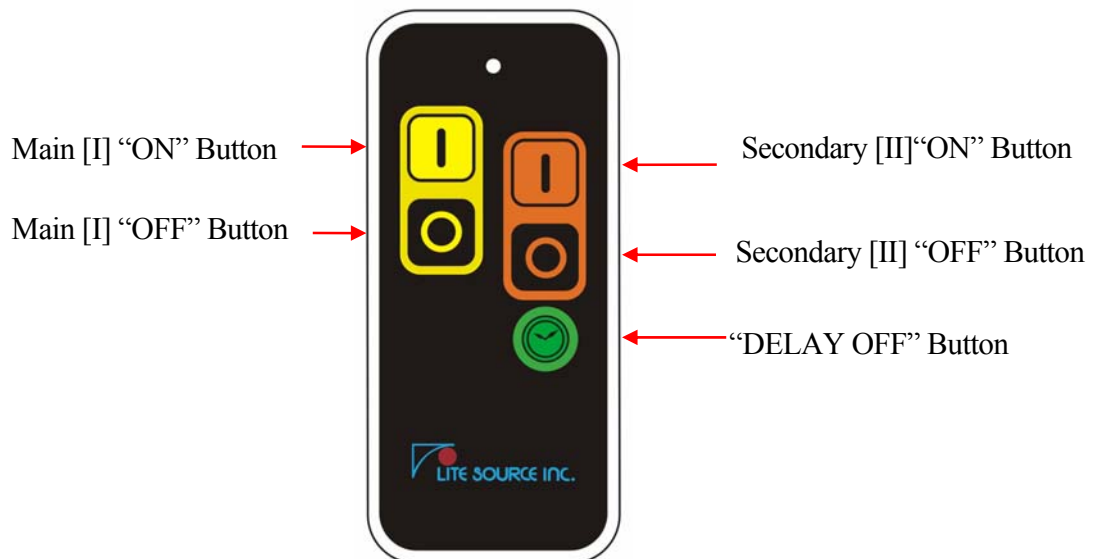
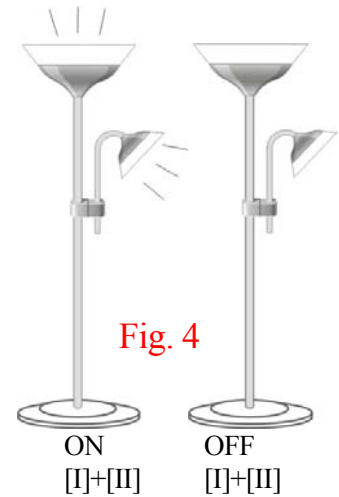
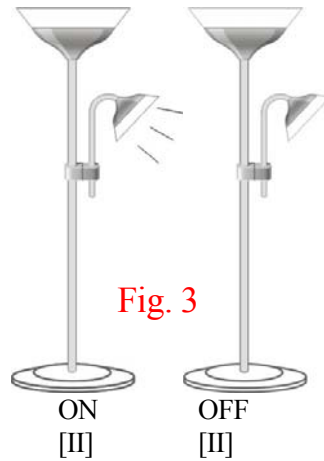
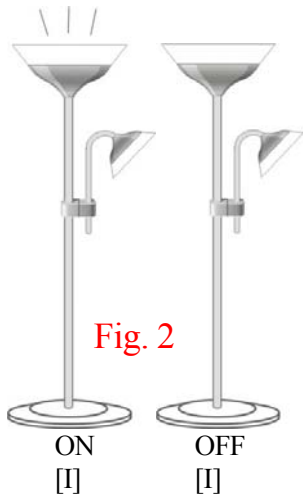


Fig. 1





INSTALLATION:

Receiver LMR-400 (Refer to Fig. 1)

- Disconnect main power before installation.
- Connect AC wire (Live & Neutral) to receiver block terminal IN.
- Connect Load wires into receiver block terminal OUT (Port I & Port II) .
- Connect main power on.

OPERATION :

1. Transmitter LMT-1009

(Refer to Fig. 2)

- Main [I] “ON” button: Turns on main [I] light
- Main [I] “OFF” button: Turns off main [I] light

(Refer to Fig. 3)

- Secondary [II] “ON” button: Turns on main [II] light
- Secondary [II] “OFF” button: Turns off main [II] light

- “DELAY OFF” button: Turns off automatically after 10 seconds.
- “Security mode”: Randomly turns on & off the lights.
To activate, hold both “ON and OFF” button of Main [I] for 3 seconds.
To deactivate, simply press any button on the transmitter.

※REMARK※

In order to operate with a transmitter, the mechanical switch must be powered “ON”

2. Mechanical Switch (Refer to Fig. 4)

- 1st time “ON” will control the main [I] light
- 2nd time “ON” will control the secondary [II] light
- 3rd time “ON” will control both main [I] and secondary [II] light.

HOW TO LINK CODE:

- To start, program transmitter with receiver.
- Connect power to receiver
- Switch ON first then OFF and ON cycle for 6 times, this will enter learning mode.
While in learning mode, the main [I] light connected to receiver will flash to indicate ready for programming.
- Then on transmitter press the main [I] “ON” button once, main [I] and secondary [II] light will flash 2 times to indicate programming is confirmed and completed.

! During leaning mode if within 12 seconds no signal is detected it will automatically return to stand-by mode.

TO DELETE CODE :

- Switch ON first then OFF and ON cycle for 6 times, this will enter learning mode.
While in learning mode, the main [I] light connected to receiver will flash to indicate ready for programming.
- Then on transmitter press the main [I] “OFF” button once, main [I] and secondary [II] light will flash 2 times to indicate the memory of this transmitter is deleted.

TO DELETE ALL CODE :

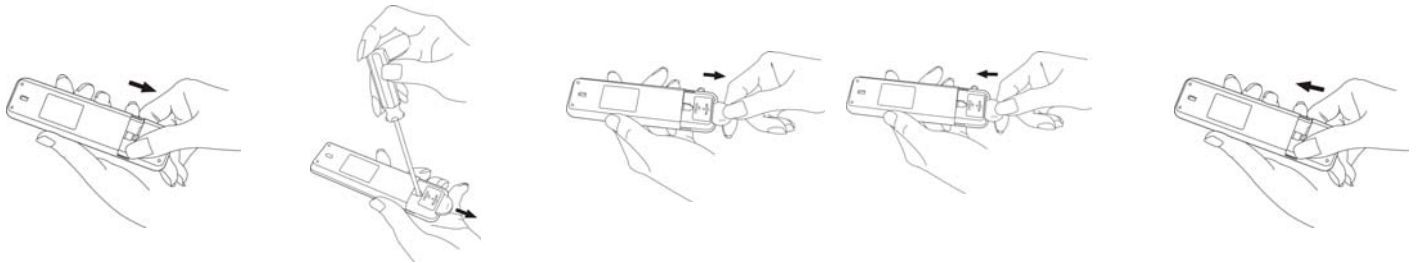
- Switch ON first then OFF and ON cycle for 6 times, this will enter learning mode.
- Follow again switching OFF and ON cycle for 6 times, main [I] and secondary [II] light will flash 2 times to indicate all memories are deleted.

BATTERY EXCHANGE:

3V CR2032 lithium battery is included ex-factory.

When battery voltage is low, transmission is low.

Slide down the battery cover and replace a fresh new battery.



SPECIFICATION:

LMT-1009 Transmitter:

3V CR2032 BATTERY included

LMR-400 Receiver:

Frequency: 433.92MHz

Input: AC 120V

Output [I]: AC 250W max.

Output [II]: AC 250W max.

Ta: 50 °C

Tc: 80°C

FAULT FINDING:

No activation: Check battery polarity or running out battery
Check code link successful.
Check if memory setting is full
Check correct wiring installation.

Warning!

DO NOT OVERLOAD

Disconnect main power before wiring installation.

Do not use in damp places like patios, cellar, flammable liquid, solvents, paints etc..

Federal Communication Commission Interference Statement

This equipment has been tested and found to comply with the limits for a Class B digital device, pursuant to Part 15 of the FCC Rules. These limits are designed to provide reasonable protection against harmful interference in a residential installation. This equipment generates, uses and can radiate radio frequency energy and, if not installed and used in accordance with the instructions, may cause harmful interference to radio communications. However, there is no guarantee that interference will not occur in a particular installation. If this equipment does cause harmful interference to radio or television reception, which can be determined by turning the equipment off and on, the user is encouraged to try to correct the interference by one of the following measures:

- Reorient or relocate the receiving antenna.
- Increase the separation between the equipment and receiver.
- Connect the equipment into an outlet on a circuit different from that to which the receiver is connected.
- Consult the dealer or an experienced radio/TV technician for help.

FCC Caution: Any changes or modifications not expressly approved by the party responsible for compliance could void the user's authority to operate this equipment.

This device complies with Part 15 of the FCC Rules. Operation is subject to the following two conditions: (1) This device may not cause harmful interference, and (2) this device must accept any interference received, including interference that may cause undesired operation.