

OPERATION MANUAL

LMT-1008 Transmitter & LMR-404 Receiver

FEATURES:

- Simple installation, easy operation
- 67 million codes, self program.
- 6 memory scene settings, no memory loss.
- Red LED indicator on transmitter.
- 2 built-in operations. Can control main load and RGB at the same time.
- Selectable of 12 colors LED
- Security mode.

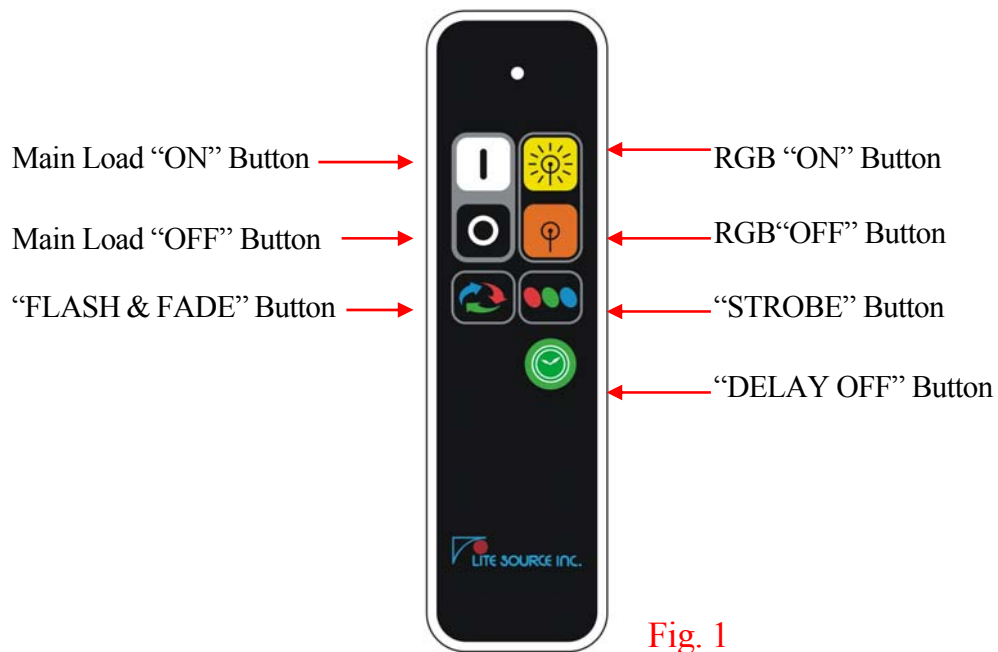


Fig. 1

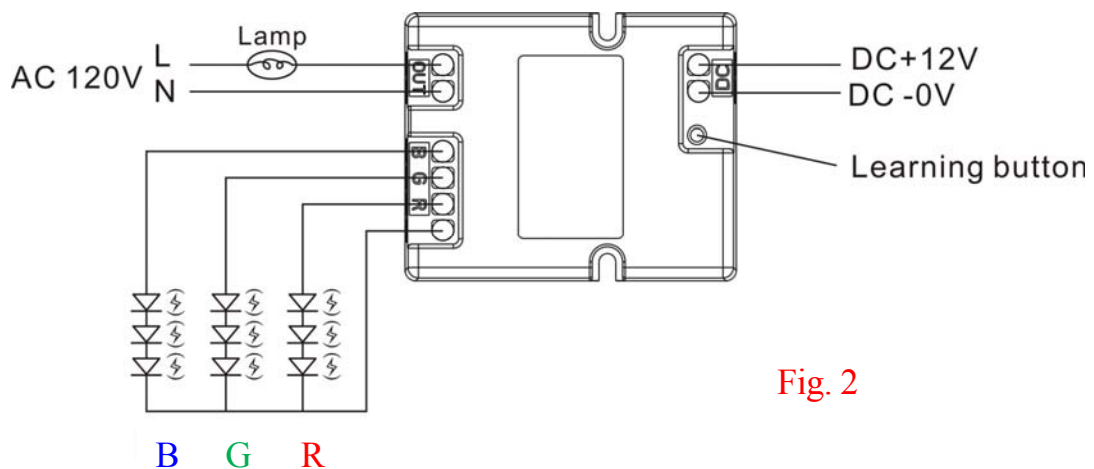


Fig. 2

INSTALLATION:

Receiver LMR-404 (Refer to Fig. 2)

- Disconnect main power before installation.
- Connect DC wire and load (lamp) to receiver block terminal OUT.
- Connect RGB wires into receiver block terminal RGB, making sure correct colour are fitted into the terminal. Connect main power on.

OPERATION :

Transmitter LMT-1008 (Refer to Fig. 1)

- Main “ON” button: Turns on the main load.
- Main “OFF” button: Turns off the main load.
- RGB “ON” button: Turns on the RGB LEDs
- RGB “OFF” button: Turns off the RGB LEDs
- “FLASH & FADE” button.
 - FLASH mode: Changes color in approximately 4 seconds
 - FADE mode: Gradually fading color changes in approximately 12 seconds.
- “STROBE” button: For selecting the desired color. (12 selectable colors)
- “DELAY OFF” button: Turns off automatically after 10 seconds.
- “Security mode”:
 - Randomly turns on & off the main load.
 - To activate, hold both RGB “ON & OFF” button for 3 seconds.
 - To deactivate, simply press any button on the transmitter.
 - ! Will only operate for the main load.*

! Main load connected to LMR-404 receiver will light “ON” for the first time main power “ON”.

※REMARK※

- RGB mode (FLASH /FADE /STROBE) will be memorized at the last turned “OFF” mode, so next time switching “ON” will stay at the last memorized mode.

HOW TO LINK CODE:

- To start, program transmitter with receiver.
- Connect power to receiver
- Bring transmitter near receiver, push once the self learning button on receiver, this will enter learning mode.
While in learning mode, RGB light connected to receiver will flash in RED to indicate ready for programming.
- Then on transmitter press main “ON” button once, RGB light connected to receiver will flash in BLUE to indicate programming is confirmed and completed.

! During leaning mode if within 10 seconds no signal is detected it will automatically return to stand-by mode.

TO CHANGE OR DELETE CODE :

- Bring transmitter near receiver, push once the self learning button on receiver, this will enter learning / deleting mode.
While in learning / deleting mode, RGB light connected to receiver will flash in RED to indicate ready for deleting.
- Then on transmitter press main “OFF” button once, RGB light connected to receiver will flash in BLUE to indicate programmed code is deleted.

TO DELETE ALL CODE :

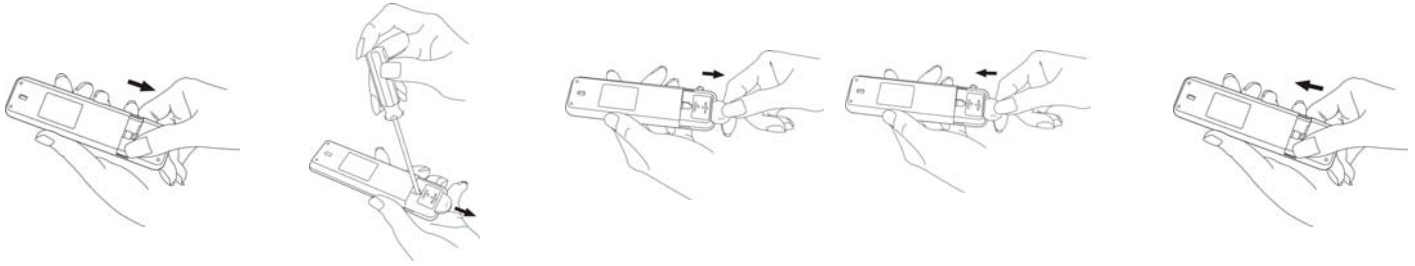
- On receiver hold down the self learning button on receiver for 6 seconds, this will enter learning / deleting mode.
While in learning / deleting mode, RGB light connected to receiver will flash in RED to indicate ready for deleting.
- Then press again the self learning button, RGB light connected to receiver will flash in BLUE twice to indicate all code is deleted.

BATTERY EXCHANGE:

3V CR2032 lithium battery is included ex-factory.

When battery voltage is low, transmission is low.

Slide down the battery cover and replace a fresh new battery.



SPECIFICATION:

LMT-1008 Transmitter:

3V CR2032 BATTERY included

LMR-404 Receiver:

Frequency: 433.92MHz

Input: DC 12V

Attention: please make sure that LED DC Power Supply has short-circuit / overload protection function, before electrical connection.

Output: 3A Max.

R.G.B. Output: DC 12V 1.5A max. / each.

Ta: 50 °C

Tc: 80°C

FAULT FINDING:

No activation: Check battery polarity or running out battery

Check code link successful.

Check if memory setting is full

Check correct wiring installation.

Warning!

DO NOT OVERLOAD

Disconnect main power before wiring installation.

Do not use in damp places like patios, cellar, flammable liquid, solvents, paints etc..

Federal Communication Commission Interference Statement

This equipment has been tested and found to comply with the limits for a Class B digital device, pursuant to Part 15 of the FCC Rules. These limits are designed to provide reasonable protection against harmful interference in a residential installation. This equipment generates, uses and can radiate radio frequency energy and, if not installed and used in accordance with the instructions, may cause harmful interference to radio communications. However, there is no guarantee that interference will not occur in a particular installation. If this equipment does cause harmful interference to radio or television reception, which can be determined by turning the equipment off and on, the user is encouraged to try to correct the interference by one of the following measures:

- Reorient or relocate the receiving antenna.
- Increase the separation between the equipment and receiver.
- Connect the equipment into an outlet on a circuit different from that to which the receiver is connected.
- Consult the dealer or an experienced radio/TV technician for help.

FCC Caution: Any changes or modifications not expressly approved by the party responsible for compliance could void the user's authority to operate this equipment.

This device complies with Part 15 of the FCC Rules. Operation is subject to the following two conditions: (1) This device may not cause harmful interference, and (2) this device must accept any interference received, including interference that may cause undesired operation.