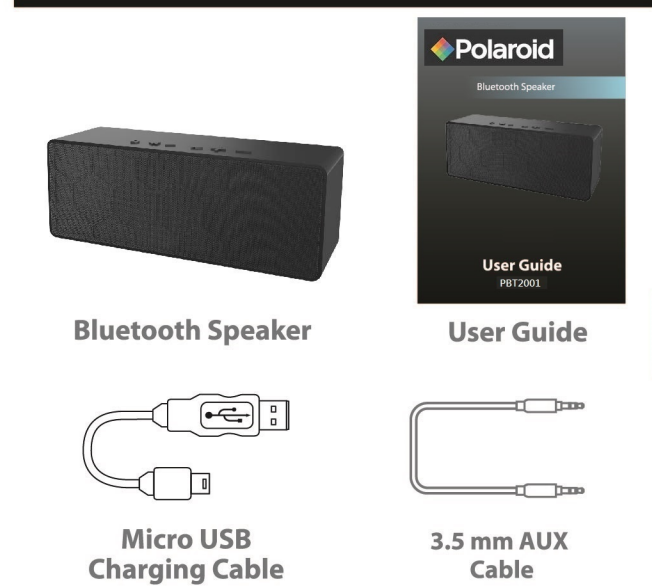
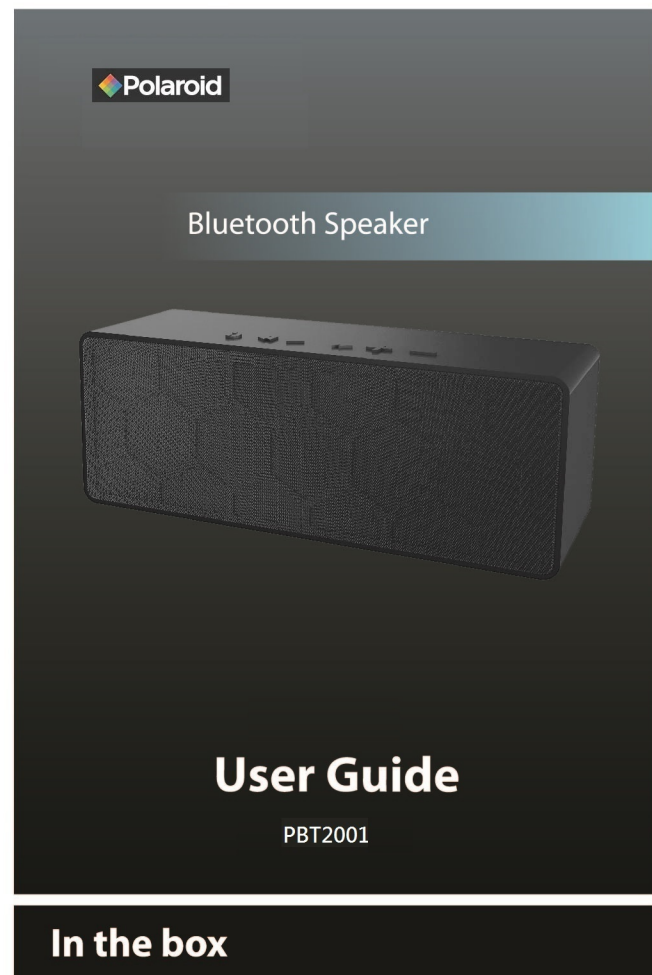


## SBT2001 User Manual

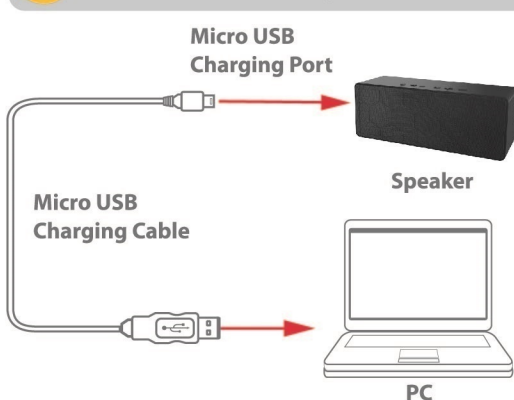
510.175 mm



## Charging the Bluetooth Speaker

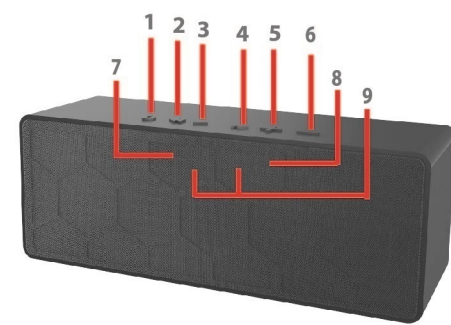
1. Plug the small end of the Micro USB cable into the Micro USB port on the back of the speaker.
2. Plug the other end into a USB port on your computer or other device made for USB charging.
3. The LED indicator light on the front of the speaker lights up RED when charging. It will shut off when fully charged.

**i** When the battery is running low, the speaker emits an alarm sound every 30 seconds.

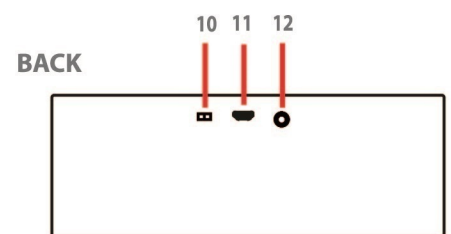


**i** Make sure you charge the speaker for at least 5 hours before using it for the first time.

## Location of Controls



1. [ **⏻** ] **button**: Answer/end calls
2. [ **⏮** ] **button**: Skip to previous song
3. [ **⏸** ] **button**: Pause/play music
4. [ **⏭** ] **button**: Skip to next song
5. [ **+** ] **button**: Increase volume
6. [ **-** ] **button**: Decrease volume
7. LED charging indicator light
8. LED pairing indicator light
9. Microphones



10. OFF/ON switch
11. Micro USB charging port
12. AUX IN jack

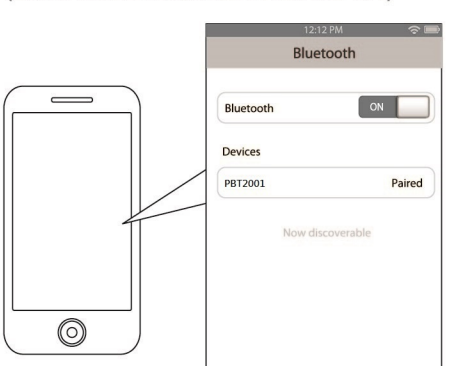
## Pairing the speaker with a Bluetooth enabled device

1. Slide the power switch on the back of the speaker to the ON position.
2. A tone will be heard and the LED pairing indicator light will flash BLUE.
3. Keep the speaker and Bluetooth enabled device within 3 feet of each other during the pairing process.
4. Set your mobile phone or other Bluetooth enabled device to search for Bluetooth devices.

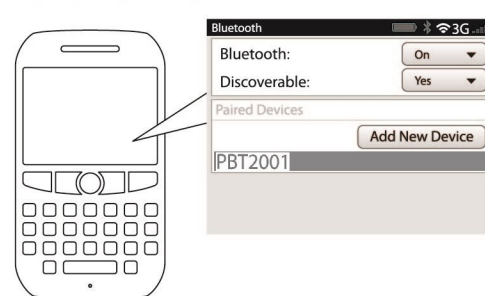


**i** If there are no paired devices in range when the speaker is turned on, it will go into pairing mode automatically. If a paired device is in range, the speaker will connect to it automatically.

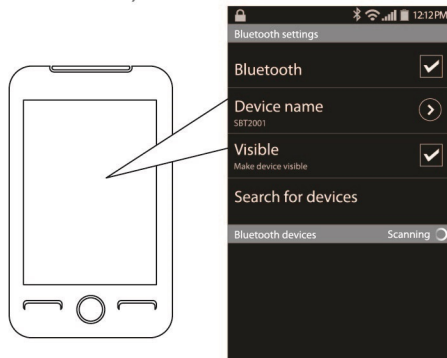
- On an iPhone**
- Go to **SETTINGS > BLUETOOTH** (Make sure Bluetooth is turned ON)



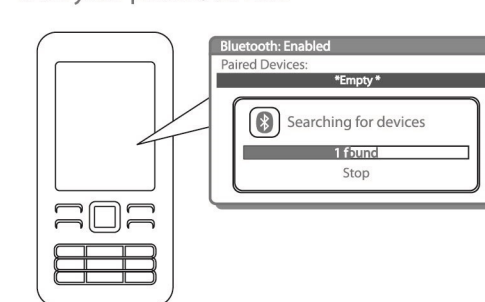
- On a Blackberry**
- Go to **SETTINGS/OPTIONS > BLUETOOTH**
  - Enable **BLUETOOTH**



- On an Android Phone**
- Go to **SETTINGS > BLUETOOTH > MENU > Search for devices** (Make sure Bluetooth is turned ON)



- On other Cell Phones/Devices**
- Review the instruction manual that came with your phone/device.



5. When the Bluetooth enabled device finds the speaker, select PBT2001 from the list of found devices.
6. If required, enter the password 0000. Select OK or Yes to pair the two units.
7. After a successful registration, a tone will sound and the LED pairing indicator light will be a steady blue.

**NOTE:** If you would like to connect the speaker to another device, you must unpair the speaker from the currently paired device first. On your device's Bluetooth settings, select "PBT2001", then select "unpair". When the speaker has been unpaired, it automatically goes into pairing mode again.

**i** The screenshots above are typical of many Bluetooth enabled devices in the market today, and are used to assist in the explanation of the pairing process. Your Bluetooth enabled device's interface and interaction with the **Bluetooth Speaker** may slightly differ from the illustrations above.

## Using your Bluetooth Speaker

## Powering ON/OFF

Slide the power switch on the back of the speaker to the ON or OFF position.

## Adjusting the volume

- Quickpress the [ **+** ] button to gradually increase the volume; press and HOLD it to continually increase the volume to maximum level.
- Quickpress the [ **-** ] button to gradually decrease the volume; press and HOLD it to continually decrease the volume to minimum level.

**i** NOTE: You can also adjust the volume from your mobile phone's volume control.

## Answering/Ending a call

- To answer a call, press the [ **⏻** ] button.
- To end a call, press the [ **⏻** ] button.

## To make a call

Dial the number and press the send button on your mobile phone. The call will automatically be transferred to the speaker.

## To reject a call

Press and HOLD the [ **⏻** ] button for 3 seconds.

## Playing Music

To enjoy wireless music on your Bluetooth Speaker, make sure you are connected to a Bluetooth enabled device. Once connected you can press PLAY on your Bluetooth device or you can press the [ **⏸** ] button on the Bluetooth Speaker. Once playback has begun, you can control the music from the control buttons of the Bluetooth speaker (with devices that have the AVRCP Bluetooth profile).

**i** Most media enabled smart phones will display "Connected to phone audio and media" when connected to the Wireless Speaker. This means you can make phone calls and enjoy your music.

## Play/Pause

- Press the [ **⏸** ] **button** to pause the music.
- To resume music playback, press the [ **⏸** ] button again.

## Skipping Songs

- Press the [ **⏮** ] button to skip to previous song.
- Press the [ **⏭** ] button to skip to next song.

## Adjusting the volume

- Quickpress the [ **+** ] button to gradually increase the volume; press and HOLD it to continually increase the volume to maximum level.
- Quickpress the [ **-** ] button to gradually decrease the volume; press and HOLD it to continually decrease the volume to minimum level.

**i** You can also adjust the volume from your mobile phone's volume control.

## Using as wired speakers

1. Turn on the speaker.
2. Connect one end of the 3.5mm AUX Cable to the AUX IN jack on the back of the speaker, and the other end of the cable to an external device's headphone jack (smartphone, tablet, MP3 player).
3. Use the controls on your connected device to control music playback and volume.

**i** When in AUX IN mode, the speaker's buttons will not function, and Bluetooth connectivity is disabled.

**i** When in AUX IN mode, only the volume can be controlled by both the buttons on the speaker and the connected external device. You must use your connected external device to control playback when wired.

## Troubleshooting Tips

**i** I can pair the Bluetooth Speaker with my Bluetooth enabled device, but I cannot hear any music.

1. Make sure your Bluetooth device supports A2DP profile.
2. Turn up the volume on your Bluetooth device.
3. You may have to unpair the speaker, then re-pair to your device.

**i** I cannot get the Bluetooth Speaker into Pairing mode.

1. Make sure the Bluetooth Speaker is turned ON before beginning the pairing process.
2. A tone will sound, indicating that the speaker is in pairing mode, and the LED pairing indicator light will blink blue.
3. The speaker is now in pairing mode.

**i** My Bluetooth device is not able to pair with the Bluetooth Speaker.

1. Make sure the Bluetooth Speaker is turned ON before beginning the pairing process.
2. Keep your Bluetooth Speaker and Bluetooth enabled device within 3 feet of each other during the pairing process.
3. Check that YOUR device's Bluetooth feature is turned ON.
4. Try repeating the pairing process, see "Pairing the speaker with a Bluetooth enabled device".

## Legal information

**FCC Part 15:**  
This device complies with Part 15 of the FCC Rules. Operation is subject to the following two conditions:

(1) this device may not cause harmful interference, and  
(2) this device must accept any interference received, including interference that may cause undesired operation.

Warning: Changes or modifications to this unit not expressly approved by the party responsible for compliance could void the user's authority to operate the equipment.

**NOTE:** This equipment has been tested and found to comply with the limits for a Class Digital device, pursuant to Part 15 of the FCC Rules. These limits are designed to provide reasonable protection against harmful interference in a residential installation. This equipment generates, uses and can radiate radio frequency energy and, if not installed and used in accordance with the instructions, may cause harmful interference to radio communications.

However, there is no guarantee that interference will not occur in a particular installation. If this equipment does cause harmful interference to radio or television reception, which can be determined by turning the equipment off and on, the user is encouraged to try to correct the interference by one or more of the following measures: Reorient or relocate the receiving antenna. Increase the separation between the equipment and receiver. Connect the equipment into an outlet on a circuit different from that to which the receiver is connected. Consult the dealer or an experienced radio/TV technician for help.

This device complies with Industry Canada License exempt RSS-310. Operation is subject to the following two conditions: (1) this device may not cause interference, and (2) this device must accept any interference, including interference that may cause undesired operation of the device.

PLR IP Holdings, LLC, its licensees and affiliates, fully support all electronic waste initiatives. As responsible stewards of the environment, and to avoid violating established laws, you should properly dispose of this product in accordance with all applicable regulations, directives or other governments in the area where you reside. Please check with local authorities or the retailer where you purchased this product to determine a location where you can appropriately dispose of the product.

You may also go to [HYPERLINK "http://www.polaroid.com"](http://www.polaroid.com) www.polaroid.com and reference About Electronics Recycling to learn more about the specific laws in your area and to locate a collection facility near your home.

If your electronic device has internal memory on which personal or other confidential data may be stored, you may want to perform a data sanitization process before you dispose of your device to ensure another party cannot access your personal data. Data sanitization varies by the type of product and its software, and you may want to research the best sanitization process for your device before disposal. You may also check with your local recycling facility to determine their data sanitization procedures during the recycling process.

## Limited Warranty

## 90 Days Limited Warranty

In the unlikely event that this product is defective, or does not perform properly, you may within ninety (90) days from your original date of purchase return it to the authorized service center for repair or exchange.

## TO OBTAIN WARRANTY SERVICE:

- Provide proof of the date of purchase within the package (Dated bill of sale).
- Prepay all shipping costs to the authorized service center, and remember to insure your return.
- Include a return shipping address (no P.O. Boxes), a telephone contact number, and the defective unit within the package.
- Describe the defect or reason you are returning the product.

Your product will be repaired or replaced, at our option, for the same or similar model of equal value if examination by the service center determines this product is defective. Products received damaged as a result of shipping will require you to file a claim with the carrier.

The shipping address of the authorized service center is:

**Southern Telecom, Inc.**  
**Attention: Customer Service (2nd Floor)**  
**14-C 53rd Street**  
**Brooklyn, NY 11232**

## Warranty service not provided

This warranty does not cover damage resulting from accident, misuse, abuse, improper installation or operation, lack of reasonable care, and unauthorized modification. This warranty is voided in the event any unauthorized person opens, alters or repairs this product. All products being returned to the authorized service center for repair must be suitably packaged.

## Limitation of Warranty:

- THE WARRANTY STATED ABOVE IS THE ONLY WARRANTY APPLICABLE TO THIS PRODUCT. ALL OTHER WARRANTIES, EXPRESS OR IMPLIED (INCLUDING ALL IMPLIED WARRANTIES OF MERCHANTABILITY OR FITNESS FOR A PARTICULAR PURPOSE) ARE HEREBY DISCLAIMED. NO VERBAL OR WRITTEN INFORMATION GIVEN BY AIT, INC. IT'S AGENTS, OR EMPLOYEES SHALL CREATE A GUARANTY OR IN ANY WAY INCREASE THE SCOPE OF THIS WARRANTY.

- REPAIR OR REPLACEMENT AS PROVIDED UNDER THIS WARRANTY IS THE EXCLUSIVE REMEDY OF THE CONSUMER. AIT, INC. SHALL NOT BE LIABLE FOR INCIDENTAL OR CONSEQUENTIAL DAMAGES RESULTING FROM THE USE OF THIS PRODUCT OR ARISING OUT OF ANY BREACH OF ANY EXPRESS OR IMPLIED WARRANTY ON THIS PRODUCT. THIS DISCLAIMER OF WARRANTIES AND LIMITED WARRANTY ARE GOVERNED BY THE LAWS OF THE STATE OF NEW YORK. EXCEPT TO THE EXTENT PROHIBITED BY APPLICABLE LAW, ANY IMPLIED WARRANTY OF MERCHANTABILITY OR FITNESS FOR A PARTICULAR PURPOSE ON THIS PRODUCT IS LIMITED TO THE APPLICABLE WARRANTY PERIOD SET FORTH ABOVE.

Some states do not allow the exclusion nor limitation of incidental or consequential damages, or limitations on how long an implied warranty lasts so the above limitations on exclusions may not apply to you. This warranty gives you specific legal rights, and you also may have other rights that vary from state to state.

Should you have any questions or problems concerning this product, please contact our customer service department at:

**Customer Support:**  
**Phone: 1-877-768-8481**  
**Monday-Friday 8AM-10PM(EST)**

**www.southern telecom.com**  
**Click on "Product Support"**

330.453 mm