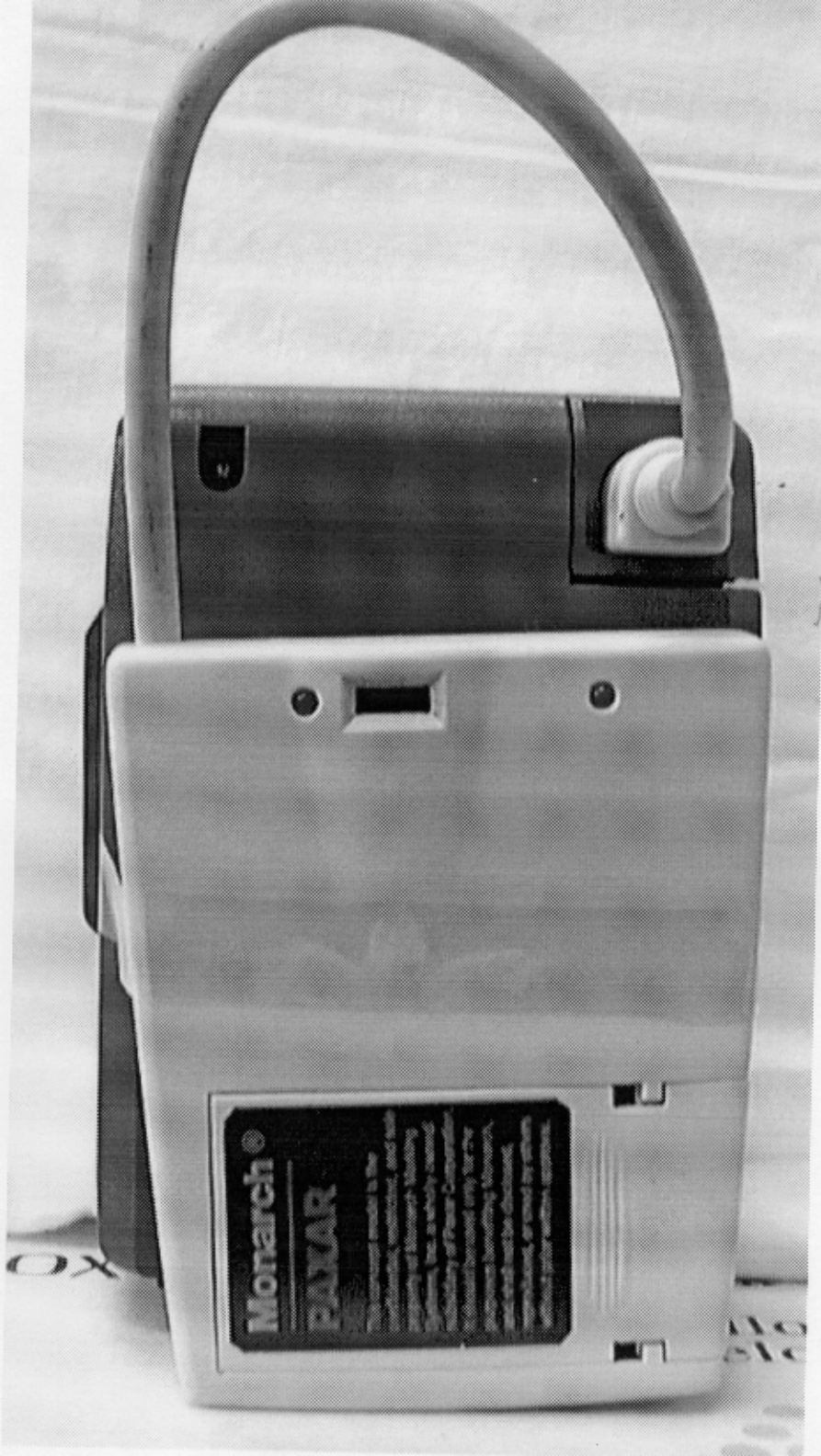




Monarch
10 1009450 SER 97061901 V 6.0 777 A 3.5

MONARCH® MONARCH MARKING® MONARCH MARKING SYSTEMS®
The Monarch Logo and other product identifications are trademarks of Monarch Marking
Systems, Inc. 179 Monarch Lane, Mansfield, CT 06107 Made in U.S.A.





Monarch®

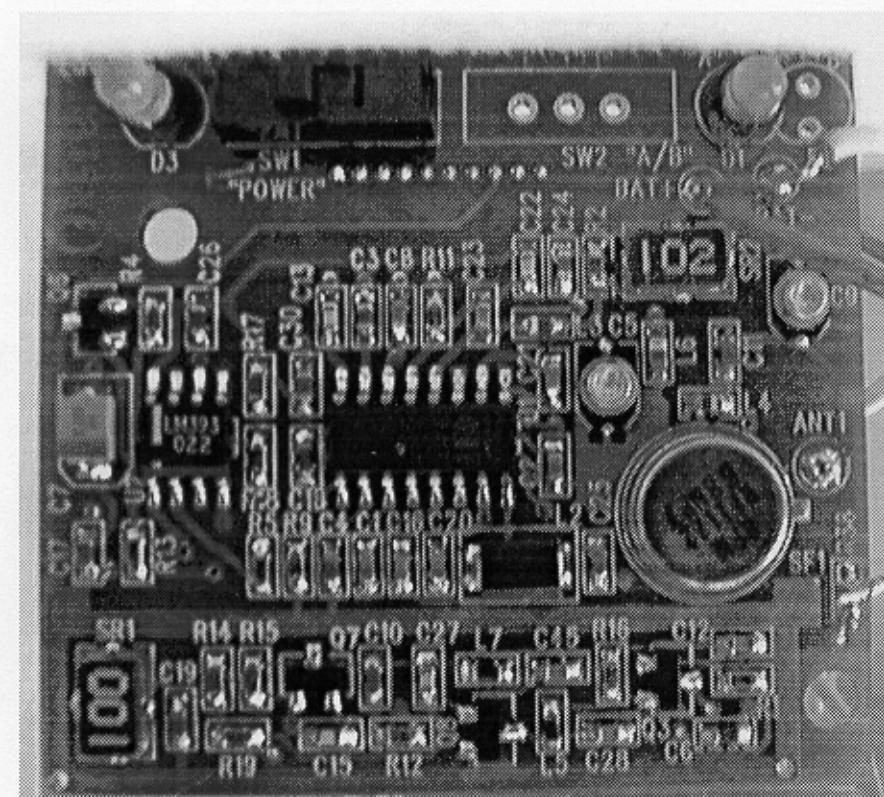
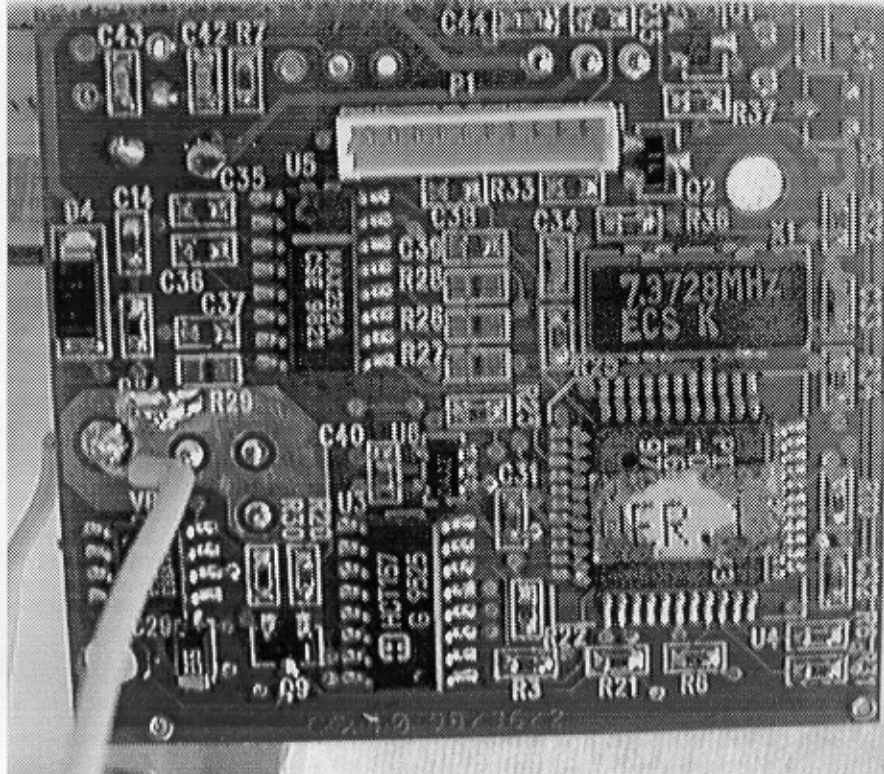
PAVAR

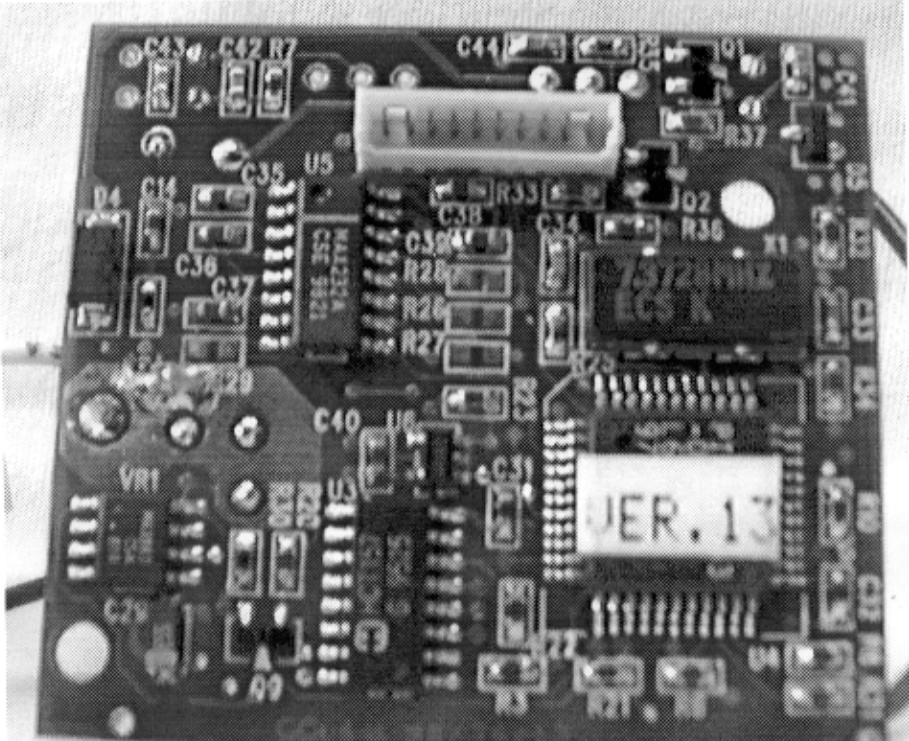
This instrument is provided to the
public for use in the field. It is
not intended for use in the laboratory.
The instrument is provided to the
public for use in the field. It is
not intended for use in the laboratory.
The instrument is provided to the
public for use in the field. It is
not intended for use in the laboratory.

Monarch [®]

PAXAR

This concept model is the confidential, restricted, and sole property of Monarch Marking Systems, Inc. a wholly owned subsidiary of Paxar Corporation. It should be used only for the purposes benefiting Monarch, and shall not be disclosed, reproduced, or used by others without prior written approval.





C43 C42 R7

C44

C35 U5

U5

7520N12
EGS K

R28
R26
R27

SER. 13

VR1

C40 U6

U6

C51

C29

09

