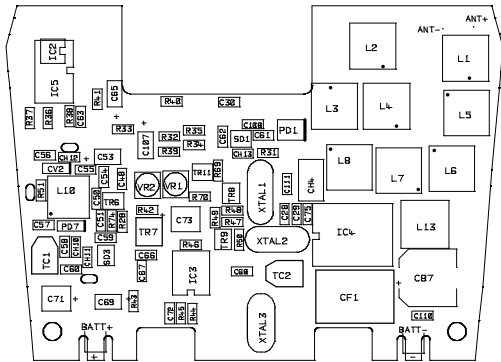




DRG No. E03466

FRONT VIEW



SURFACE MOUNT COMPONENTS

ITEM	QTY	PART No.	COMP REF	DESCRIPTION
10	3	100314	R29,R31,R74	0603 10R
11	1	100325	R39	0603 100R
12	1	100332	R49	0603 330R
13	3	100334	R40,R42,R46	0603 470R
14	1	100342	R51	0603 2k2
15	1	100346	R41	0603 4k7
16	5	100350	R32,R33,R36,R70	0603 10K
17	1	100351	R47	0603 12K
18	2	100356	R44,R45	0603 33K
19	2	100358	R48,R50	0603 47K
20	1	100362	R59	0603 100K
21	2	100374	R35,R37	0603 1M
22	1	100384	R43	0603 1k1
23	1	100385	R34	0603 0R
24	1	110102	C87	33UF ELECTROLYTIC
25	1	110157	C73	4u7 TANT
26	2	110183	TC1,TC2	10p TRIMMER CAP
27	1	110188	C71	10UF TANT
28	4	110194	C49,C60,C62,C110	0603 1r X7R
29	2	110196	C30,C67	0603 10n X7R
30	4	110199	C56,C63,C68,C72	0603 100n X7R
31	1	110202	C61	0603 1p COG
32	1	110208	C54	0603 7p COG
33	1	110209	C75	0603 8p COG
34	2	110213	C51,C108	0603 15p COG
35	1	110215	C58	0603 22p COG
36	2	110216	C28,C55	0603 27p COG
37	1	110217	C58	0603 33p COG
38	1	110221	C57	0603 68p COG KYO
39	1	110222	C29	0603 82p COG
40	1	110223	C66	0603 100p COG
41	1	110231	C59	0603 470p COG KYO
42	4	110237	C53,C65,C69,C107	1UF TANT
43	1	120025	SD3	DALL4
44	1	120024	PD1	MA4P-1250
45	1	120077	PD7	84592
46	1	120078	CV2	88425
47	1	120089	SD1	BAT17-044
48	1	130057	TR7	DTC1432K
49	2	130067	TR9,TR11	BC846B
50	1	130068	TR8	BC858A
51	1	130070	TR6	NE68130
52	1	140051	IC5	LM358
53	1	140151	IC4	MC33619
54	1	140152	IC3	PM2333TR
55	2	150040	VR1,VR2	VARIABLE RES 10K
56	4	240051	L5,L6,L7,L8	E558CNA100035 58n
57	1	240053	L1	1000HQ 58n
58	2	240054	L2,L3	1000HQ 58n
59	1	240055	L4	1000HQ 47n
60	1	240058	L13	B36AH-0376 VARIABLE
61	4	240059	CH10,CH11,CH12,CH13	MLF0603 680n
62	1	240062	CH4	JACL32255 1.0u
63	1	803776	L10	SPACER PCB ASSEMBLY

CONVENTIONAL MOUNT COMPONENTS

ITEM	QTY	PART No.	COMP REF	DESCRIPTION
1	1	E03465	-	PCB DRILLED
2	1	160018	XTAL1,XTAL2	21M158 AEL
3	1	160069	CF1	CFUM450E AEL
4	1	300004	-	L1,L2,L3,L4 SHEILD
5	2	E02909	XTAL1,XTAL2	INSULATOR
6	1	E02612	XTAL3	21.05MHz AEL
7	2	E03457	BATT+,BATT-	E03621 + E03457
8	1	E03442	ANT+	E03442
9	1	E03574-1	-	VCO SHEILD

NOTE NOT FITTED-- R39,IC2
SOT-- C111 REFER TO E03735

DRAWN BY: R.F.		CHECKED:	APPROVED:	DATE: 19-11-99	SCALE:	TITLE: RF PCB FRONT ASSEMBLY DETAIL	ORG No: E03466	ISSUE: SHT 1 OF 2	1
<p>DO NOT SCALE IF IN DOUBT ASK</p> <p>STAR LINE, MARGATE, HENT CTB MAP TEL: 0613 290200 FAX: 0613 290171</p> <p>MATERIAL:</p> <p>MODEL: HT50/AXIS 50 GMDS</p>				<p>No. 1258 DATE: 19-11-99</p> <p>THIS DRAWING IS COMPUTER GENERATED ANY MANUAL MODIFICATION WILL INVALIDATE THE C.A.D. FILE</p> <p>LINE/TS NET + 8 - + 8 - 8.48 - .25 .88 - .12 88 - .18 .88 - .88 ANG - 0.5 ANG - 0.5</p>					